

BURNS

AUCTION SERVICE

Great Lakes Carnival Glass Club

“Glass Bash”

Auction

Friday & Saturday,
November 6 & 7, 1998

Friday: Auction - 6:00 pm,
preview - 4:00 pm (lots 1 - 180)

Saturday: Auction - 10:00 am,
preview - 8:00 am (Lots 181 - end)

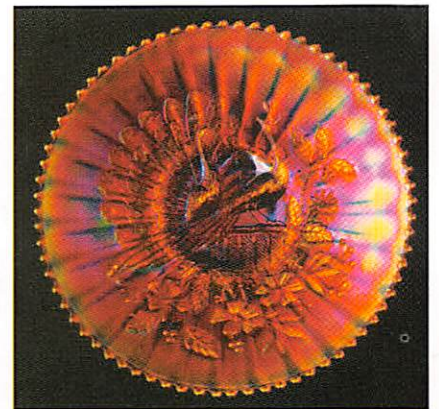
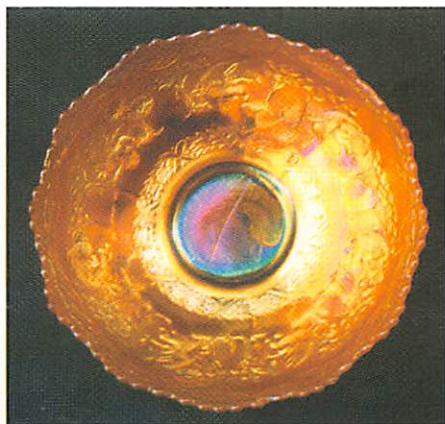
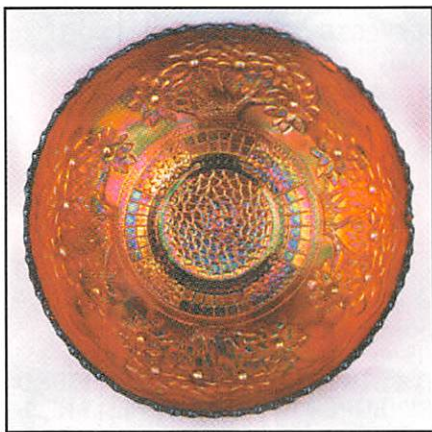
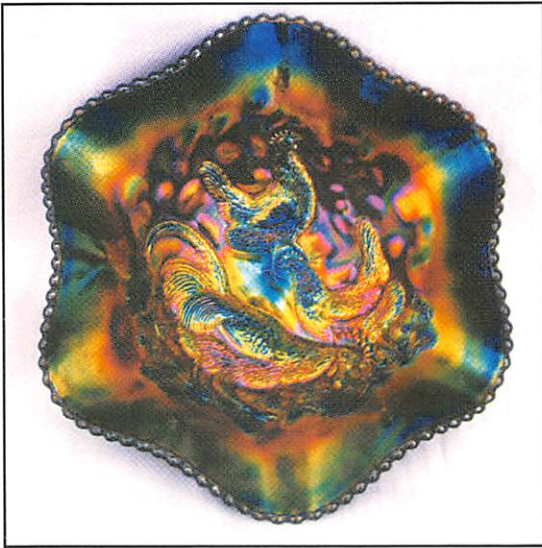
at the

Holiday Inn - Troy

2537 Rochester Ct., Troy, Michigan 48083

(just off Rochester Rd.; Exit 67 of I-75)

(248) 689-7500



It's Fall and... ARE YOU READY FOR SOME FOOTBALL!!! Well, in the meantime, we're bringing some great glass to the Great Lakes Carnival Glass Bash Auction. Each year we do this auction we get braver. Well, this year is a hum-dinger. Combining collections from California and Arizona, we made this year's Michigan Auction one of our favorites. Be sure to take part in this one.

I'll tell ya what... If I wanted to own a Farmyard Bowl, I'd definitely consider the one in this auction. Anyway, the auction will take place Friday & Saturday, November 6 & 7, at the Holiday Inn of Troy, Michigan. It's located on the north side of Detroit, just off Exit 67 of I-75. This is an event you won't want to miss - there's only an auction or two left this season and this is one of the best.

Mail, Email, fax, and phone bids are due by Tuesday, November 3, 1998.

Burns Auction Service

Tom Burns
P.O. Box 608
Bath, New York 14810
(607) 776-7942

Bill Richards
44 Water St., Poland, OH 44514
(330) 757-2001
FAX (330) 757-4917

Bill Richards, III
2253 Country Lane
Poland, OH 44514
(330) 755-2620

Maid Bids honored under the following conditions:

1. No deposit required. Bidders will take full responsibility to honor any and all bids we execute for them. Payment in full plus postage and handling required after notification and before we ship any item to them.
2. Items are bid on in perfect condition with average or above average iridescence OR as listed in the brochures. Bids will not be carried out when damage on an item has been found during the auction. **PEOPLE PRESENT AT AUCTION ARE RESPONSIBLE FOR FINDING ANY PINHEADS, WEAR, SPOTTINESS, MANUFACTURER'S DEFECTS OR ANY OTHER MINOR FLAWS, ETC.**
3. Successful bidders will be notified by collect call from the auctioneer (**so be sure to include phone number**).
4. Phone inquiries about the glass or any other questions are welcome.
5. If you have some other person at the auction bidding for you, they must pay for the item before taking it.
6. Any terms or conditions given the day of the auction will supersede any previously published information.
7. Mail, Email, FAX and Phone bids due by Tuesday, November 3, 1998.

- | | |
|---|---|
| <p>___ 1. 1997 ICGA Frolicking Bears Vase - Plume Opal.</p> <p>___ 2. 1989 ACGA Morning Glory Pitcher - Red</p> <p>___ 3. 1971 ACGA Beaded Shell Mug - Amber</p> <p>___ 4. St. Clair Holly Amber Mug - Amberina</p> <p>___ 5. N PEACOCKS RUFFLED BOWL WITH RIBBED EXT. - AQUA OPAL. (RARE AND VERY DESIRABLE; SUPER OPAL. AND VERY PASTEL)</p> <p>___ 6. N PEACOCKS PLATE WITH RIBBED EXT. - DK. MARI. (PUMPKIN; AND A VERY SUPER EXAMPLE)</p> <p>___ 7. N Peacocks Bowl with Pie Crust Edge and Ribbed Ext. - Mari. (scarce; nice color and irid.)</p> <p>___ 8. N Memphis Handled Punch Cup - Green (nice color)</p> <p>___ 9. N Memphis Handled Punch Cup - Dk. Mari. (nice color and irid.)</p> <p>___ 10. N POPPY SHOW PLATE - DK. MARI. (SUPER PUMPKIN EXAMPLE; VERY ATTRACTIVE)</p> <p>___ 11. N ROSE SHOW PLATE - WHITE (VERY SCARCE WITH SUPER IRID. - NICE)</p> <p>___ 12. N ROSE SHOW RUFFLED BOWL - AQUA OPAL. (RARE AND DESIRABLE; NICE PASTEL FINISH)</p> <p>___ 13. N POPPY SHOW RUFFLED BOWL - BLUE (SUPER MULTI-COLORED IRID; VERY ATTRACTIVE)</p> <p>___ 14. N POPPY SHOW RUFFLED BOWL - ICE BLUE (GREAT EXAMPLE; NICE COLOR & BRIGHT IRID.)</p> <p>___ 15. N Wide Panel Epergne, Center Lily and 4 Side Lilies - White (some may have small flake on bases; epergne base is damaged)</p> <p>___ 16. N Peacock at the Urn Ind. Ice Cream Bowl - Elec. Blue (super example and blue irid.)</p> <p>___ 17. N BEADED CABLE FTD. RUFFLED ROSE BOWL - AQUA OPAL. (VERY ATTRACTIVE EXAMPLE)</p> <p>___ 18. N Beaded Cable ftd. Ruffled Rose Bowl - Dk. Mari. (really nice color and irid.)</p> <p>___ 19. N Drapery Swung Vase - Mari. (nice dark color)</p> <p>___ 20. N DAISY AND DRAPE FTD. FLARED VASE - AQUA OPAL. (SUPER, SUPER PASTEL EXAMPLE; A WONDERFUL ITEM)</p> <p>___ 21. N FRUITS AND FLOWERS STEMMED HANDLED BON BON - AQUA OPAL. (ANOTHER SUPER PASTEL EXAMPLE; GREAT!)</p> | <p>___ 22. N Fruits and Flowers Stemmed Handled Bon Bon - Dk. Mari. (super example; a really nice one)</p> <p>___ 23. N Three Fruits Bowl with Pie Crust Edge and Basketweave Ext. - Purp. (really nice satiny example)</p> <p>___ 24. N THREE FRUITS STIPPLED PLATE WITH RIBBED EXT. - DK. MARI. (SUPER EXAMPLE; GREAT RED-DISH HIGHLIGHTS)</p> <p>___ 25. N THREE FRUITS MEDALLION SPATULA FTD. RUFFLED BOWL WITH MEANDER EXT. - AQUA OPAL. (SUPER OPAL.; AN EXCELLENT EXAMPLE)</p> <p>___ 26. N Three Fruits Medallion Stippled Spatula ftd. Ruffled Bowl with Meander Ext. - Dk. Mari. (rare variation; nice dark color and irid.)</p> <p>___ 27. N GOOD LUCK RUFFLED BOWL WITH RIBBED EXT. - PASTEL AMY. (ABOUT AS LAVENDER AS THESE GET; SUPER BLUE AND RED HIGHLIGHTS)</p> <p>___ 28. N GOOD LUCK RUFFLED BOWL WITH RIBBED EXT. - ELEC. BLUE (RARE AND DESIRABLE; HAS BRIGHT RED AND BLUE HIGHLIGHTS)</p> <p>___ 29. N Oriental Poppy Tumbler - Purp. (nice color and irid.)</p> <p>___ 30. N ORIENTAL POPPY TANKARD WATER PITCHER - GREEN (EXCELLENT EXAMPLE WITH GREAT GOLD AND RED HIGHLIGHTS)</p> <p>___ 31. 12 1/2 - 13" N Tree Trunk Mid Size Swung Vase - Green (very scarce with a super satiny finish)</p> <p>___ 32. N Strawberry Ruffled Bowl with Basketweave Ext. - Green (attractive item with super irid.)</p> <p>___ 33. N HEART AND FLOWERS RUFFLED BOWL WITH RIBBED EXT. - ICE GREEN (RARE AND VERY DESIRABLE; GREAT IRID.)</p> <p>___ 34. N HEART AND FLOWERS STEMMED RUFFLED COMPOTE WITH RIBBED EXT. - DK. MARI. (SUPER, SUPER EXAMPLE - ONE OF THE BETTER ONES!)</p> <p>___ 35. N HEART AND FLOWERS STEMMED RUFFLED COMPOTE WITH PLAIN EXT. - ICE BLUE (RARE AND DESIRABLE; NICE COLOR AND IRID.)</p> <p>___ 36. N Fine Cut and Roses ftd. Ruffled Candy Dish - Green (super rid. on inside only; pinhead chip on foot)</p> <p>___ 37. N DRAPERY DEEP RUFFLED ROSE BOWL - BLUE (VERY DESIRABLE SHAPE; NICE COLOR)</p> |
|---|---|

- ___ 38. N Drapery Ruffled Rose Bowl - Amy. (super example; scarce with excellent irid.)
- ___ 39. **N EIGHT SIDED HANDLED BUSHEL BASKET - ICE GREEN (RARE SHAPE; GREAT COLOR AND IRID.; NICE)**
- ___ 40. **N SUNFLOWER DEEP 8 RUFFLED FTD. BOWL WITH MEANDER EXT. - ICE BLUE (EXTREMELY RARE COLOR AND PATTERN; SUPER IRID.; WE HAVEN'T SOLD MAY OF THESE LATELY; THIS HAS GOT TO BE ONE OF THE BEST)**
- ___ 41. **N LATTICE AND POINSETTIA FTD. 8 RUFFLED BOWL WITH RIBBED EXT. - ICE BLUE (VERY RARE AND VERY DESIRABLE; NICE GOLD HIGHLIGHTS)**
- ___ 42. 7 1/2" N Grape and Cable Plate with Basketweave Ext. - Amy. (scarce shape)
- ___ 43. **N GRAPE AND CABLE LG. OPEN STEMMED RUFFLED COMPOTE - PURP. (PROBABLY AS EXCELLENT AN EXAMPLE AS I'VE SEEN)**
- ___ 44. **N GRAPE AND CABLE LG. ICE CREAM BOWL WITH BASKETWEAVE EXT. - PURP. (NICE SATINY IRID. WITH BLUE AND GOLD HIGHLIGHTS)**
- ___ 45. **N GRAPE AND CABLE VARIANT STIPPLED PLATE WITH RIBBED EXT. AND "OLD ROSE DISTILLERY" ADVERTISEMENT - GREEN (RARE AND DESIRABLE; NICE BRONZE HIGHLIGHTS)**
- ___ 46. N Stippled Singing Bird Handled Mug - Dk. Mari. (nice color and irid.; very scarce)
- ___ 47. N Singing Bird Handled Mug - Mari. (nice color)
- ___ 48. N Daisy and Plume Stemmed Ruffled Rose Bowl - Amy. (scarce color and irid.)
- ___ 49. **N DANDELION TANKARD WATER PITCHER - DK. MARI. - (SUPER, SUPER COLOR AND IRID.; REALLY NICE)**
- ___ 50. **N WISHBONE CHOP PLATE WITH BASKETWEAVE EXT. - PURP. (RARE AND DESIRABLE; HAS REALLY STRONG SATINY FINISH)**
- ___ 51. **N GOOD LUCK PLATE WITH BASKETWEAVE EXT. - AMY (RARE AND DESIRABLE; SATINY; SMALL CHIP ON HORSESHOE)**
- ___ 52. **N GOOD LUCK PLATE WITH BASKETWEAVE EXT. - MARI. (VERY SCARCE AND DESIRABLE; NICE IRID.)**
- ___ 52A. **N GOOD LUCK BOWL WITH PIE CRUST EDGE AND BASKETWEAVE EXT. - PUR. (VERY SCARCE AND NICE MULTI-COLORED IRID.)**
- ___ 53. N Luster and Flute 2 Handled Bon Bon - Green (radium finish)
- ___ 54. Cambridge Buzz Saw small sized Cruet with no stopper - Green (rare and desirable - where's the stopper?)
- ___ 55. **CAMBRIDGE INVERTED STRAWBERRY LG. OPEN COMPOTE - MARI. (RARE AND VERY DESIRABLE; NICE COLOR AND IRID.)**
- ___ 56. **CAMBRIDGE INVERTED FEATHER COVERED CRACKER JAR - GREEN (VERY SCARCE AND VERY DESIRABLE)**
- ___ 57. Cambridge Buzz Saw Lg. Cruet with no stopper - Dk. Mari. (rare and very desirable - would be nice with a stopper)
- ___ 58. 6" M'burg Blackberry Wreath very low Ruffled Sauce - Mari. (radium and very scarce; neat low ruffled shape)
- ___ 59. **M'BURG STRAWBERRY WREATH STEMMED 6 RUFFLED COMPOTE - AMY. (RADIUM AND VERY DESIRABLE - GREAT IRID. AND VERY NICE)**
- ___ 60. **M'BURG LEAF AND LITTLE FLOWERS DEEP FLARED MINIATURE STEMMED COMPOTE - AMY. (RARE AND VERY DESIRABLE ; SUPER RADIUM FINISH - REALLY NICE!)**
- ___ 61. **M'BURG BOUTIONIERE STEMMED 6 RUFFLED COMPOTE - DK. MARI. (SUPER, SUPER RADIUM FINISH; GREAT EXAMPLE)**
- ___ 62. **M'BURG HOBNAIL ROSE BOWL - MARI. (VERY SCARCE AND DESIRABLE; NICE COLOR -SUPER ITEM)**
- ___ 63. **M'BURG SWIRL HOBNAIL ROSE BOWL - DK. MARI. (EXCELLENT EXAMPLE; SUPER NICE ITEM)**
- ___ 64. **5 1/2" M'BURG PEACOCK IND. DEEP FLARED BERRY BOWL - AMY. (SUPER RADIUM IRID.; GREAT EXAMPLE; NO BEE, NO BEADS)**
- ___ 65. **M'BURG NESTING SWAN 6 RUFFLED BOWL - GREEN (RADIUM AND VERY DESIRABLE; GREAT ITEM)**
- ___ 66. M'burg Whirling Leaves 6 Ruffled Bowl - Amy. (radium and a super example)
- ___ 67. M'burg Primrose 6 Ruffled Bowl - Mari. (satiny example with nice detail)
- ___ 68. 6" M'burg Cosmos Ice Cream Shaped Bowl - Green (radium and desirable)
- ___ 69. Fenton Stretch Ribbed Stemmed Doughnut Tray - Celeste Blue (nice color and irid.)
- ___ 70. **8 - 8 1/2 " FENTON ORANGE TREE ICE CREAM SHAPED BOWL - RED (A BEAUTIFUL ITEM; HAS BRIGHT IRID. BUT NOT REALLY CHERRY RED)**
- ___ 71. **8 1/2 - 9" FENTON PEACOCK AND GRAPE 8 RUFFLED BOWL - RED (REALLY NICE COLOR; IRID. IS SATINY GOLD WITH A MULTI-COLORED EDGE)**
- ___ 72. **9 1/2" - 10 1/2 " FENTON FINE RIB SWUNG VASE - RED (A REALLY ATTRACTIVE EXAMPLE; GREAT COLOR AND IRID.)**
- ___ 73. 10 1/2" Fenton Knotted Beads Swung Vase - Blue (super example with great color and irid.)
- ___ 74. 12 - 13" Fenton April Showers Swung Vase - Green (silvery / gold irid.)
- ___ 75. **FENTON THISTLE FLAT PLATE - AMY. (EXTREMELY RARE ITEM WITH NICE SATINY FINISH, GREAT DETAIL AND COLOR)**
- ___ 75A. **FENTON HOLLY FLAT PLATE - GREEN (RARE AND DESIRABLE COLOR; NICE AVERAGE SATINY MULTI-COLORED IRID.)**
- ___ 76. **9" FENTON PEACOCK AT THE URN PLATE WITH BERRY EXT. - BLUE (VERY SCARCE AND DESIRABLE WITH NICE MULTI-COLORED IRID.)**
- ___ 77. 7 1/2" Fenton Leaf Chain Plate with Berry Ext. - Mari. (scarce satiny finish; nice and dark)
- ___ 78. 6" Fenton Persian Medallion 6 Ruffled Sauce - Dk. Mari. (nice color and detail)
- ___ 79. 6" Fenton Sailboat 6 Ruffled Sauce with Orange Tree Ext. - Dk. Mari. (nice color and detail)
- ___ 80. **9 - 9 1/2 " FENTON DRAGON AND LOTUS LOW 8 RUFFLED BOWL - ICE GREEN OPAL. (EXTREMELY RARE BASE COLOR AND OPAL. EDGE - SUPER)**
- ___ 81. 8 1/2 - 9" Fenton Dragon and Lotus 8 Ruffled Bowl - Dk. Mari. (super, super color and irid. - really nice)
- ___ 82. 8 1/2 - 9" Fenton Dragon and Lotus Bowl with 3 in 1 Edge - Amy. (another super item; great color and irid.)
- ___ 83. **FENTON HEARTS AND TREES FTD. MASTER BERRY BOWL WITH BUTTERFLY AND BERRY EXT. - DK. MARI. (SUPER RARE PATTERN; NICE DARK COLOR AND IRID.)**
- ___ 84. 5 - 5 1/2" Tall Fenton Boggy Bayou Squatty Vase - Dk. Mari. (nice color and irid.)
- ___ 85. **FENTON RUFFLED RIBBED FIGURE 8 SHAPED SPITTOON - DK. MARI. (NEVER SEEN ONE SHAPED LIKE THIS - VERY UNUSUAL AND REALLY DIFFERENT)**
- ___ 86. **FENTON GRAPE AND CABLE SMALL SIZE FTD. FRUIT BOWL WITH PERSIAN MEDALLION INTERIOR - BLUE (VERY SCARCE AND VERY DESIRABLE; A SUPER EXAMPLE)**
- ___ 87. Fenton Holly Jack in the Pulpit Crimped Edge Hat - Blue (nice example)

- ___ 88. 5" Fenton Peacock Tail Tri-Cornered Sauce - Green (scarce shape with excellent color and irid.)
- ___ 89. **6 - 6 1/2" FENTON LITTLE FLOWERS LOW 6 RUFFLED SAUCE - AQUA / MARI. (VERY SCARCE BASE COLOR - SATINY FINISH)**
- ___ 90. **FENTON GRAPE AND CABLE BALL FTD. 8 RUFFLED BOWL - CELESTE BLUE (EXTREMELY RARE BASE COLOR; TOUGH TO FIND; NICE IRID.)**
- ___ 91. **7" TALL FENTON STRETCH PERFUME BOTTLE WITH DABBER - CELESTE BLUE (VERY SCARCE AND VERY DESIRABLE; NICE COLOR)**
- ___ 92. **FENTON 2 ROW OPEN EDGE 6 RUFFLED HAT - ICE GREEN (RARE AND DESIRABLE SHAPE AND COLOR; NICE IRID.)**
- ___ 93. **5" FENTON 2 ROW OPEN EDGE ICE CREAM SHAPED BOWL - ICE GREEN (SUPER SHAPE AND COLOR AND IRID.; VERY DESIRABLE)**
- ___ 94. Fenton Pastel Swan - Ice Green - (nice color and irid.)
- ___ 95. **FENTON PEACOCK AT THE URN STEMMED RUFFLED COMPOTE - LIME GREEN / MARI. (VERY SCARCE COLOR AND IRID. - ATTRACTIVE)**
- ___ 96. 8 1/2 - 8 3/4" Fenton Captive Rose Bowl with 3 in 1 Edge - Blue (nice color and irid.)
- ___ 97. Fenton Ftd. Orange Tree Tumbler - Blue (damaged feet)
- ___ 98. Fenton Vintage Grape 4 Sided 2 Handled Bon Bon - Amy. (scarce)
- ___ 99. Fenton Panther Ftd. Ruffled Sauce - Dk. Mari. (nice color and detail)
- ___ 100. **FENTON MINIATURE BLACKBERRY STEMMED FLAT PLATE WHIMSEY - BLUE (EXTREMELY RARE ITEM; GREAT COLOR, DETAIL AND SHAPE)**
- ___ 101. 9 1/2" Fenton Orange Tree Flat Plate - Dk. Mari. (scarce with really nice irid.)
- ___ 102. Fenton Orange Tree Lg. Ftd. Ruffled Fruit Bowl - Dk. Mari. (nice color with brilliant irid.)
- ___ 103. Fenton Wreath of Roses Handled Punch Cup with Persian Medallion Interior - Mari.
- ___ 104. Fenton Plain Flared Ftd. Salt Dip - Mari.
- ___ 105. Fenton Persian Medallion Rose Bowl - White (very scarce and desirable; nice color and irid.)
- ___ 106. 8 1/2" Fenton Peacock Tail Bowl with Tight Candy Ribbon Edge - Dk. Mari. (nice color)
- ___ 107. Fenton Mikado Lg. Flared Stemmed Compote - Mari. (very scarce and desirable; dark satiny finish)
- ___ 108. Fenton Iris Stemmed Ruffled Compote - Green (scarce shape)
- ___ 109. Fenton Ribbed Interior Spittoon Shaped Compote Vase - Green (scarce shape)
- ___ 110. **EUROPEAN GRAND THISTLE BULBOUS HANDLED WATER PITCHER - AMBER (EXTREMELY RARE SHAPE AND COLOR FOR THIS ITEM; 1ST I'VE SEEN)**
- ___ 111. **EUROPEAN ROSE MARIE LG. FAN VASE - DK. MARI. (RARE PIECE WHICH IS THE 2ND WE'VE SOLD THIS YEAR)**
- ___ 112. **SOWERBY DIVING DOLPHIN FTD. CRIMPED RUFFLED BOWL - SORTA HOREHOUND (VERY, VERY ODD SHADE; HAS A LIGHT AMYTHEST TINT; HAS TO BE EXTREMELY RARE)**
- ___ 113. 12" European Headdress Interior / Curved Star Ext. Lg. 6 Ruffled Bowl - Dk. Mari. (scarce large sized item; nice color)
- ___ 114. 6 1/2 - 7" Australian Butterfly Bower (?) 12 Ruffled Bowl - Mari. (probably an incorrect name; very scarce pattern)
- ___ 115. **MAKER (?) "BOOKER" 5 PC. ENAMELED DECORATED HANDLED WATER SET - LT. MARI. (EXTREMELY DESIRABLE SET; PITCHER AND 4 HANDLED MUGS)**
- ___ 116. Pair Fostoria Plain Taffeta Lustre Squatty Candlesticks - Purp. (very unusual pair - have original labels, one has a small chip)
- ___ 117. Depression Era Hobnail Cologne Bottle and Stopper - Lt. Mari. (scarce item)
- ___ 118. Imperial 474 Lg. Size Water Pitcher - Dk. Mari. (very scarce item; nice dark color)
- ___ 119. Imperial 474 Tumbler - Mari. (nice color and irid.)
- ___ 120. Imperial Fashion Breakfast Creamer - Purp. (great irid.; chipped on base; tough to find)
- ___ 121. Imperial Diamond and Sunburst Straight up Stemmed Wine Glass - Purp. (scarce; has super blue highlights)
- ___ 122. Imperial Diamond and Sunburst Flared Stemmed Wine Glass - Mari. (small chip on base; nice color)
- ___ 123. Imperial Octagon Covered Butter Dish - Mari. (very scarce; nice color; tough item)
- ___ 124. Imperial Star Medallion Handled Milk Pitcher - Mari. (nice color)
- ___ 125. **IMPERIAL OPEN ROSE FLAT PLATE - AMBER (RARE; GETTING VERY DESIRABLE; NICE EXAMPLE)**
- ___ 126. Imperial Pansy 8 Ruffled Bowl - Amber - (super example; great blue highlights)
- ___ 127. Imperial Shell and Sand Deep 8 Ruffled Bowl - Helios Green (average irid.)
- ___ 128. Imperial Tiger Lily Tumbler - Helios Green (nice detail)
- ___ 129. 6 1/2" Tall Imperial Ripple Miniature Swung Vase - Dk. Mari. (cute item; very nice color and irid.)
- ___ 130. 5" Tall Imperial Miniature Morning Glory and Drape Swung Vase - Dk. Mari. (super example; great color and irid.)
- ___ 131. 4" Tall Imperial Miniature Morning Glory Swung Vase - Dk. Mari. (cute item; great color and irid.)
- ___ 132. 10" Imperial Ripple Swung Vase - Mari. (nice color)
- ___ 133. Imperial Star Medallion Handled Punch Cup - Mari. (scarce item)
- ___ 134. Imperial Frosted Block Stemmed Round Compote - Clamb. (very rare shape)
- ___ 135. Imperial Open Rose Bowl - Amber (scarce with great color and irid.)
- ___ 136. Imperial Waffle Block Handled Punch Cup - Dk. Mari. (super color)
- ___ 137. Imperial Grape Cup and Saucer - Bottom of Saucer Etched "To Vera From Beryl 1929" - Mari. (neat little piece of history)
- ___ 138. Imperial Grape Low 8 Ruffled Bowl - Pastel Mari. (nice irid.)
- ___ 139. 6" Imperial 3 in 1 6 Ruffled Bowl - Dk. Mari.
- ___ 140. **IMPERIAL FASHION LG. ROSE BOWL - MARI. (NICE COLOR AND IRID.; SCARCE AND PERFECT)**
- ___ 141. 9" Imperial Crab Claw Exterior Lg. Ice Cream Bowl - Smokey Mari. (odd tint to the irid.)
- ___ 142. Imperial Frosted Block Rose Bowl - Made in U.S.A. - White
- ___ 143. 7 1/2" Imperial Star Medallion Flared Bowl - Mari. (worn on top edge)
- ___ 144. Depression Era Swan Covered Powder Puff / Lipstick Holder - Mari. (sorta cute item)
- ___ 145. **12" TALL IMPERIAL BEADED BULLSEYE FLARED SWUNG VASE - AQUA (A BEAUTIFUL EXAMPLE WITH GREAT IRID.; HAS TO BE ONE OF THE BEST EXAMPLES I'VE SEEN)**
- ___ 146. 10" Tall Imperial Beaded Bullseye Flared Swung Vase - Dk. Mari. (super color and irid.)
- ___ 147. 9" Imperial Hattie Deep Flared Bowl - Smoke (scarce; super irid.)
- ___ 148. **IMPERIAL 474 HANDLED MILK PITCHER - GREEN (RARE; VERY DESIRABLE; HAS A SORTA GOLD IRID.)**
- ___ 149. Imperial Fashion 7 pc. Water Set - Dk. Mari. (super, super dark color and irid.)
- ___ 150. **PHOENIX GLASS CO. LACY DEWDROP STEMMED GOBLET - MARI./ MILK GLASS (RARE ITEM; HAVEN'T SOLD MANY)**
- ___ 151. U.S. Glass 1909 Louisville Shriners Champagne Glass - Clear (scarce)
- ___ 152. Imperial Lustre Fruit Tumbler - Mari.
- ___ 153. Tree Of Life - Crackle Tumbler - Mari.
- ___ 154. Westmoreland Orange Peel Handled Punch Cup - Mari.

- ___ 155. **8 1/2" WESTMORELAND CAROLINA DOGWOOD 6 RUFFLED BOWL - MARI. / MILK GLASS (VERY SCARCE AND DESIRABLE ; NICE COLOR & IRID.)**
- ___ 156. 8 1/2" Westmoreland Carolina Dogwood 6 Ruffled Bowl - Dk. P. Opal. (scarce; dark Mari. with opal. to base)
- ___ 157. 6 1/2" Westmoreland Fishscale Flat Plate - Aqua / Teal (scarce; flat)
- ___ 158. Dugan Petal and Fan 6 Ruffled Crimped Edge 2 Sided Banana Dish - P. Opal. (very scarce shape for this pattern)
- ___ 159. Dugan Folding Fan Stemmed 6 Ruffled Crimped Edge 2 Sided Compote - P. Opal. (scarce; nice irid. and opal.)
- ___ 160. Dugan Bellflower Tri-Cornered Crimped Edge Bowl - P. Opal. (scarce; great shape and opal.)
- ___ 161. (2) 6" Dugan Petal and Fan 8 Ruffled Sauces with Jewelled Heart Ext. - P. Opal. (selling so much for pair)
- ___ 162. (3) 6" Dugan Petal and Fan 6 Ruffled Sauces with Jewelled Heart Ext. - P. Opal. (selling so much each for set)
- ___ 163. Dugan Thumbprint Stemmed 8 Ruffled Compote - P. Opal. (nice opal.)
- ___ 164. Dugan Beaded Shell Ftd. Spooner - Dk. Mari. (great color and irid.; scarce)
- ___ 165. **DUGAN GOD AND HOME TUMBLER - BLUE (RARE AND DESIRABLE; GREAT COLOR AND DETAIL)**
- ___ 166. Dugan Harvest Flower Tumbler - Mari. (scarce; nice color)
- ___ 167. Dugan Handled Beaded Basket with Flared Top - Mari. (very scarce shape for this item; nice)
- ___ 168. 7" Dugan Persian Garden Flat Plate - Dk. Mari. (really nice color and irid.)
- ___ 169. Dugan Puzzle Stemmed Handled Banana Shaped Bon Bon - Lt. Mari. (chipped; nice irid.)
- ___ 170. **DUGAN MANY FRUITS 7 PC. ROUND PUNCH SET - PURP. (SUPER, SUPER COLOR AND IRID.; CUPS ARE MORE AMY.)**
- ___ 171. Dugan Six Petals Tri-Cornered Bowl - Purp. (super color and irid. - nice detail)
- ___ 172. Dugan Cherry Wreath Lg. Oval Master Berry Bowl - Dk. Purp. (nice satiny irid.)
- ___ 173. Dugan Constellation Stemmed 6 Ruffled Compote - White (scarce; really nice frosty irid.)
- ___ 174. Dugan Double Stem Rose 10 Ruffled Bowl - Mari. (satiny finish)
- ___ 175. **DUGAN DOUBLE STEM ROSE DEEP 10 RUFFLED BOWL - CELESTE BLUE (VERY RARE AND VERY DESIRABLE ITEM; NICE COLOR)**
- ___ 176. **DUGAN PERSIAN GARDEN LG. ICE CREAM BOWL - WHITE (SUPER COLOR AND IRID.; NICE MASSIVE ITEM)**
- ___ 177. 7 1/2" Dugan Persian Garden ind. Ice Cream Bowl - White (super irid.)
- ___ 178. N'wood Twigs Spitoon Shaped Bud Vase - Vaseline Opal. (not carnival; scarce; nice opal.)
- ___ 179. Victor Covered Horse Candy Dish - Cobalt Blue (new!)
- ___ 180. I G Owl Small Creamer and Saddle Toothpick Holder - Cobalt Blue (new!)
- ___ 187. (4) N Waterlily and Cattail Tumblers - Dk. Mari. (actually quite rare items; selling choice)
- ___ 188. N Daisy and Plume 3 ftd. Ruffled Rose Bowl - Green (has a large chip)
- ___ 189. N Fine Cut and Roses ftd. Rose Bowl with Fancy Interior - Purp. (very scarce variation; pinheads on feet)
- ___ 190. **N ROSE SHOW FLARED PLATE - DK. MARI. (ABSOLUTELY SUPER DARK COLOR AND SUPER IRID.)**
- ___ 191. N Grape Leaves Bowl with 3 in 1 Edge - Mari. (very scarce shape with satiny irid.)
- ___ 192. N Nippon 8 Ruffled Bowl with Basketweave Ext. - Green (scarce; nice satiny finish)
- ___ 192A. **N NIPPON BOWL WITH PIE CRUST EDGE AND BASKETWEAVE EXTERIOR - PUR. (VERY SCARCE AND DESIRABLE; NICE SATINY MULTI-COLORED IRID.)**
- ___ 193. N Wishbone ftd. Deep 8 Ruffled Bowl with Ruffles and Rings Ext. - Green (scarce; nice color and irid.)
- ___ 194. N Three Fruits 8 Ruffled Bowl with Plain Ext. - Pastel Mari. (super irid.)
- ___ 195. **N THREE FRUITS STIPPLED PLATE WITH RIBBED EXT. - ELEC. BLUE (VERY SCARCE AND ATTRACTIVE; NICE COLOR AND IRID.; VERY SLIGHT WEAR ON FRUIT)**
- ___ 196. N Good Luck Ruffled Bowl with Ribbed Ext. - Blue (very silvery and has small chip between 2 points)
- ___ 197. **N STRAWBERRY BOWL WITH PIE CRUST EDGE AND RIBBED EXT. - GREEN (SUPER BLUE HIGHLIGHTS; REALLY NICE)**
- ___ 198. N Fruits and Flowers Lg. 8 Ruffled Master Berry Bowl with Basketweave Ext. - Mari. (scarce; satiny)
- ___ 199. N Fruit and Flowers Stemmed Handled Bon Bon - Mari. (satiny finish)
- ___ 200. **N PEACOCK AT THE FOUNTAIN 5 PC. WATER SET - PURP. (SUPER SET WITH BLUE HIGHLIGHTS; REALLY NICE)**
- ___ 201. **N PEACOCK AT THE FOUNTAIN 8 PC. PUNCH SET - DK. MARI. (VERY SCARCE AND VERY DESIRABLE SET; NICE)**
- ___ 202. N Peacock at the Fountain ind. Berry Bowl - White (very scarce item)
- ___ 203. N Fine Cut and Roses ftd. Candy Dish with Fancy Interior - White (chipped feet)
- ___ 204. **N SMOOTH RAYS HANDLED BON BON - VIOLET BLUE (MORE BLUE THAN VIOLET - EXTREMELY RARE COLOR; REALLY NICE!)**
- ___ 205. **N PEACOCKS PLATE WITH RIBBED EXT. - ICE GREEN (VERY SCARCE AND HAS SUPER IRID.)**
- ___ 206. N Peacocks Plate with Ribbed Ext. - Mari. (one point chipped off)
- ___ 207. N Raspberry Handled Water Pitcher - Mari. (crack in handle)
- ___ 208. N Rosette ftd. Deep Ruffled Bowl - Purp. (satiny)
- ___ 209. N Beaded Cable ftd. Candy Dish with Ribbed Int. - Purp.
- ___ 210. **N CORN VASE WITH STALK BASE - PURP. (RARE AND DESIRABLE; NICE COLOR AND IRID.)**
- ___ 211. 10 - 12" N Diamond Point Swung Vase - Purp. (large chip on base)
- ___ 212. 10 - 11" N Diamond Point Swung Vase - Purp. (large chip on base)
- ___ 213. 10 - 11" N 4 Pillar Swung Vase - Amy. (odd item; nice irid.)
- ___ 214. 8 - 8 1/2" N Thin Rib Swung Vase - Purp.
- ___ 215. **N GRAPE AND CABLE VARIANT 8 PC. TABLE SIZE PUNCH SET - PURP. (VERY SCARCE AND VERY DESIRABLE SET; NICE)**
- ___ 216. **N GRAPE AND CABLE 6 PC. WATER SET - PURP. (SCARCE; PITCHER IS REALLY NICE)**
- ___ 217. **N GRAPE AND CABLE WHISKEY DECANTER AND STOPPER - LT. MARI. (RARE AND DESIRABLE - CONSISTENT IN COLOR)**
- ___ 218. N Grape and Cable Shot Glass - Mari. (has a large chip)

Start of Second Session

- ___ 181. 9 1/2" M'burg Primrose 6 Ruffled Bowl - Dk. Mari. (a super radium example; nice)
- ___ 182. 8 1/2" M'burg Blackberry Wreath Ice Cream Shaped Bowl - Amy. (another super radium item; nice)
- ___ 183. 8 - 8 1/2" M'burg Mayan Ice Cream Shaped Bowl - Green (radium and very desirable)
- ___ 184. **8 1/2 - 9" M'BURG TROUT AND FLY 6 RUFFLED BOWL - AMY. (RARE AND DESIRABLE PATTERN; NICE SATINY EXAMPLE)**
- ___ 185. **M'BURG LETTERED COURTHOUSE ICE CREAM SHAPED BOWL - AMY. (SUPER RADIUM; GREAT DETAIL - A FANTASTIC EXAMPLE)**
- ___ 186. N Singing Bird Handled Mug - Purp. (nice color and irid.)

- ___219. N Grape and Cable ftd. Hatpin Holder - Green (scarce; nice color and irid. - feet rough)
- ___220. **N GRAPE AND CABLE PERFUME BOTTLE AND STOPPER - DK. MARI. (PROBABLY ONE OF THE BEST EXAMPLES I'VE SEEN)**
- ___221. N Grape and Cable ftd. Hatpin Holder - Mari. (perfect with nice color and irid.)
- ___222. (2) N Grape and Cable Cologne Bottles and Stoppers - Dk. Mari. (selling choice; one is a tad darker)
- ___223. N Grape and Cable Small Pin Tray - Dk. Mari. (again, probably as nice as I've seen)
- ___224. N Grape and Cable Lg. Oval Dresser - Dk. Mari. (very nice example with nice color)
- ___225. N Grape and Cable Covered Powder Jar - Dk. Mari. (super example; lid a bit lighter and has normal inside rim roughness)
- ___226. N Graceful 6 Ruffled ftd. Vase - Green (scarce; actually quite a nice example)
- ___227. N Star of David Domed 8 Ruffled Bowl with Vintage Ext. - Amy. (scarce)
- ___228. Australian Lg. Flower Frog - Purp. (really neat and unusual)
- ___229. **6" AUSTRALIAN KANGAROO 12 RUFFLED SAUCE - PURP. (RARE AND DESIRABLE; NICE COLOR AND DETAIL)**
- ___230. **10" AUSTRALIAN KOOKABURRA LG. RUFFLED BOWL - PURP. (RARE, DESIRABLE; NICE COLOR AND DETAIL)**
- ___231. **10" AUSTRALIAN MAGPIE LG. RUFFLED BOWL - PURP. (VERY SCARCE; NICE COLOR AND DETAIL)**
- ___232. 10" European Headdress / Curved Star Ext. - Blue (quite an attractive item; super)
- ___233. 6 Hatpins (5 Top o' the Walk and one Triad) - Dark (selling choice)
- ___234. Shriners Shot Glass - Mari. (no date; unusual)
- ___235. 1900 Washington D.C. Shriners Champagne Glass - Clear (not carnival)
- ___236. 1908 St. Paul Minn. Shriners Champagne Glass - Ruby Flash (probably as nice an example as I've seen)
- ___237. 1909 Louisville Shriners Champagne Glass - Clear (scarce; nice)
- ___238. 1911 Rochester Shriners Champagne Glass - Clear (scarce; nice)
- ___239. 1906 Los Angeles Shriners Plate or Saucer - Clear (needs the cup)
- ___240. (2) 1905 Niagara Falls Shriners 3 Handled Tumblers - Clear
- ___241. 1903 Saratoga Shriners Handled Mug - Clear (has Indian chief; really nice)
- ___242. 1904 Atlantic City Shriners Handled Mug - Clear
- ___243. Dugan (or N'wood) Mary Ann Handled Vase - Clear Opal. (rare opalescent novelty item; not carnival)
- ___244. Dugan Mary Ann Handled Vase - Mari. (scarce)
- ___245. **8 1/2" DUGAN VINTAGE GRAPE DOMED 8 RUFFLED BOWL - GREEN (VERY SCARCE AND DESIRABLE BASE COLOR)**
- ___246. 8 1/2" Dugan Pony 6 Ruffled Bowl - Mari. (nice satiny example)
- ___247. 10" Dugan Spiralx Swung Vase - P. Opal. (nice dark example)
- ___248. Dugan Stippled Petal Domed Ruffled Bowl - P. Opal. (chipped on base)
- ___249. Dugan Stork in the Rushes Punch Bowl Top Only - Dk. Mari. (nice color, irid. and detail)
- ___250. **DUGAN FARMYARD 6 RUFFLED BOWL - PURP. (THIS EXAMPLE IS THE FINEST WE'VE EVER SOLD; IT HAS REALLY BRIGHT MULTI-COLORED IRID. AND PERFECT; HAS TO BE ONE OF THE MOST IMPRESSIVE PIECES OF CARNIVAL WE'VE SOLD THIS YEAR)**
- ___251. **DUGAN paneled cherries ftd. RUFFLED 2 SIDED BANANA DISH - PURP. (SUPER COLOR, IRID. AND SHAPE; COUPLE CHIPS ON BASE)**
- ___252. Dugan Holly Whirl 10 Ruffled Bowl - Purp. (super irid.; nice)
- ___253. Dugan Puzzle Handled 2 Sided Bon Bon - Purp. (super irid.; may have a couple of nicks)
- ___254. Dugan Raindrops Domed Flared 10 Ruffled Bowl - Amy. (scarce color; satiny irid.)
- ___255. **DUGAN BROOKLYN BRIDGE 10 RUFFLED BOWL - DK. MARI. (RARE AND DESIRABLE; HAS A RADIUM FINISH)**
- ___256. Dugan Grape Arbor Lg. Ftd. Fruit Bowl with Inverted Fan and Feather Ext. - Mari. (nice example)
- ___257. 7 1/2" Dugan Lined Lattice low Ruffled Bowl - White (super irid.; nice)
- ___258. Dugan Grape Delight ftd. Rose Bowl - White (damaged feet)
- ___259. Dugan Big Basketweave Base to Persian Garden Fruit Bowl - Mari. (odd tint)
- ___260. **DUGAN DAHLIA 7 PC. FTD. BERRY SET - DK. MARI. (SUPER, SUPER SET WITH GREAT COLOR AND IRID.)**
- ___261. Dugan Handled Beaded Basket - Odd Mari. (glass looks dark due to lead content)
- ___262. Fenton Blackberry Spray 2 Sided Hat - Blue (satiny)
- ___263. Fenton Blackberry Spray Ruffled Crimped Edge Hat - Blue (average irid.)
- ___264. Fenton Peacock Tail 6 Ruffled Hat - Amy. (has manuf. ground base; nice irid.)
- ___265. **8 1/2 - 9" FENTON PETER RABBIT ICE CREAM SHAPED BOWL - MARI. (EXTREMELY RARE AND DESIRABLE PATTERN; NICE COLOR AND DETAIL)**
- ___266. Fenton Stag and Holly Spatula ftd. Ice Cream Shaped Bowl - Green (scarce color with nice satiny finish)
- ___267. Fenton Stag and Holly Spatula ftd. 8 Ruffled Bowl - Mari. (nice color and detail)
- ___268. 10 1/2 - 11" Fenton Stag and Holly Lg. Ball ftd. 8 Ruffled Bowl - Blue (very scarce and desirable; nice detail and satiny finish)
- ___269. Fenton Butterfly and Berry ftd. Spooner - Green (very scarce color for this item - tough)
- ___270. **FENTON HORSEHEAD MEDALLION JACK IN THE PULPIT FTD. BOWL - GREEN (VERY RARE COLOR AND SHAPE FOR THIS ITEM; REALLY NICE DETAIL)**
- ___271. **FENTON HORSEHEAD MEDALLION FTD. ROSE BOWL - BLUE (VERY SCARCE AND DESIRABLE; NICE DETAIL AND IRID.)**
- ___272. Fenton Garland ftd. Rose Bowl - Blue (nice average color and irid.)
- ___273. Fenton Flowers ftd. Rose Bowl - Blue (sorta silvery but the feet look pretty good)
- ___274. Fenton Birds and Cherries Handled 2 sided Card Tray - Blue (scarce; nice irid. and detail)
- ___275. **FENTON 2 ROW OPEN EDGE ICE CREAM SHAPED HAT - CELESTE BLUE (ACTUALLY QUITE A RARE ITEM; NICE IRID.)**
- ___276. Fenton 2 Row Open Edge 2 Sided Hat - Mari. / Vaseline (scarce; nice shape and base color)
- ___277. Fenton 2 Row Open Edge 6 Ruffled Hat - Blue (attractive item)
- ___278. Fenton 2 Row Open Edge Jack in Pulpit Hat - Mari. (nice shape)
- ___279. Fenton Two Flowers Ball ftd. Round Flared Sauce - Dk. Mari. (nice color and detail)
- ___280. 7 1/2" Fenton Leaf Chain Flat Plate with Berry Ext. - Blue (scarce item with nice satiny finish)
- ___281. 8" Fenton Dragon and Lotus Spatula ftd. Ice Cream Shaped Bowl - Amy. (scarce with really nice irid. and color)

- ___282. 7 1/2 - 8" Fenton Dragon and Lotus Spatula ftd. Ice Cream Shaped Bowl - Mari. (nice color and detail)
- ___283. 8 - 8 1/2" Fenton Dragon and Lotus Ice Cream Shaped Bowl - Mari. (nice detail and satiny irid.)
- ___284. Fenton Panther Lg. Ball ftd. Deep Round Master Berry Bowl - Dk. Mari. (a beaut with great detail and irid.)
- ___285. **8 1/2 - 9" FENTON FEATHER STITCH 6 RUFFLED BOWL - GREEN (SCARCE PATTERN; NICE DETAIL IN A SCARCE COLOR)**
- ___286. 9 - 9 1/2" Fenton Persian Medallion Deep Round Flared Master Berry Bowl - Blue (scarce item from chop plate mold)
- ___287. 9 - 9 1/2" Fenton Vintage Grape Deep Round Flared Master Berry - Amy. (scarce; same shape as above; satiny irid.)
- ___287A. **FENTON PANTHER BALL FTD. ROUND IND. BERRY BOWL - GREEN (EXTREMELY RARE ITEM IN THIS COLOR; GREAT DETAIL AND IRID.; REALLY NICE)**
- ___288. 9 1/2" Fenton Lotus and Poinsettia Ball ftd. Ice Cream Shaped Bowl - Dk. Mari. (super color and irid.; a nice item)
- ___289. Fenton Cherry Circles Lg. 2 Handled Round Bon Bon - Blue (scarce; nice average color and irid.)
- ___290. Fenton Rose Wreath Stemmed 4 Sided Square Compote - Amy. (scarce shape; nice satiny finish)
- ___291. Fenton Peacock Tail Stemmed Ruffled Compote - Amy. (nice color and satiny finish)
- ___292. Fenton Fantail Ball ftd. Flared Master Berry Bowl - Blue (scarce item; nice color and irid.)
- ___293. Fenton Butterfly and Berry 7 pc. Round Berry Set - Mari. (nice well matched set)
- ___294. Fenton Butterflies 2 Sided 2 Handled Card Tray - Amy. (nice color and irid.)
- ___295. Fenton Orange Tree Lg. Ball ftd. Ruffled Fruit Bowl - Dk. Mari. (great color and irid.)
- ___296. Fenton Stippled Rays Lg. Domed Tri-Cornered Crimped Edge Bowl - Amy. (scarce shape)
- ___297. Fenton Waterlily and Cattail Tri-Cornered Sauce - Dk. Mari. (nice shape)
- ___298. Fenton Orange Tree Lg. Handled Shaving Mug - Blue (excellent color and detail; nice)
- ___299. Fenton Orange Tree 8 pc. Flared Punch Set - Mari. (nice, perfect set)
- ___300. 8 1/2 - 9" Fenton Captive Rose 6 Ruffled Bowl - Amy. (nice color and detail)
- ___301. 8 1/2 - 9" Fenton Heart and Vine 6 Ruffled Bowl - Amy. (scarce; nice color and irid.)
- ___302. 8 1/2" Fenton Heart and Vine 6 Ruffled Bowl - Dk. Mari. (great color, irid. and detail)
- ___303. 9" Fenton Peacock and Grape 8 Ruffled Bowl - Blue (satiny irid.; really nice detail)
- ___304. 8 1/2" Fenton Holly 8 Ruffled Bowl - Mari. (odd tint)
- ___305. 7 1/2" Fenton Coin Dot Low Ruffled Bowl - Blue (nice satiny finish)
- ___306. 8" Fenton Autumn Acorn Deep Round Crimped Edge Bowl - Blue (satiny irid.)
- ___307. 7" Fenton Acorn Ice Cream Shaped Bowl - Green (scarce color; satiny irid.)
- ___308. 7 1/2" Fenton Acorn Ice Cream Shaped - Odd Green (brighter base color; different)
- ___309. 8 - 8 1/2" Fenton Holly Deep Round Flared Bowl - Blue (nice example with bright irid.)
- ___310. 8 1/2" Fenton Grape and Cable Ball ftd. 8 Ruffled Bowl - Amy. (scarce color with nice irid.)
- ___311. Fenton Vintage Grape ftd. Fern Dish - Blue (super exterior irid.)
- ___312. Fenton Rose Wreath Handled Punch Cup with Persian Medallion Int. - Mari. (average color)
- ___313. 9 - 9 1/2" Fenton Knotted Beads Vase with Tight Crimped Edge - Mari. (nice satiny irid.)
- ___314. **14" TALL FENTON RUSTIC SWUNG VASE WITH TIGHT CRIMPED EDGE - WHITE (VERY SCARCE AND DESIRABLE; NICE)**
- ___315. 11 - 12" Tall Fenton Diamond Rib Standard Swung Vase - Amy. (really nice color and irid.)
- ___316. 8 1/2 - 9" Fenton Long Thumbprint Standard Swung Vase - Amy. (average irid.)
- ___317. 8 1/2" Tall Fenton Rustic Swung Vase - Blue (nice bright irid.)
- ___318. 9 - 9 1/2" Tall Fenton Fine Rib Swung Vase - Blue (really nice example)
- ___319. Cambridge Inverted Feather Stemmed Ruffled Parfait - Mari. (scarce; nice color and irid.)
- ___320. Westmoreland Louisa ftd. Rose Bowl - odd Green
- ___321. 10" Westmoreland Corinth Flared Vase - Green
- ___322. Westmoreland Strutting Peacock Covered Sugar and Creamer - Amy. (chip on base of creamer)
- ___323. Imperial Embossed Scroll / Curved Star Ext. Stemmed Ruffled Compote - Mari. (super irid.; nice)
- ___324. Imperial Embossed Scroll Stemmed Ruffled Compote - Green (pretty nice color)
- ___325. (7) Imperial Embossed Scroll Ruffled Berry Bowls with File Ext. - Purp. (super irid.; beauts; selling choice!)
- ___326. **9 1/2" IMPERIAL "OMNIBUS" 8 RUFFLED BOWL - PURP. (PROBABLY NOT THE CORRECT NAME - BUT RARE IN THIS COLOR)**
- ___327. Imperial Pansy Handled Round Nappy - Purp. (scarce; nice irid.)
- ___328. 8 1/2 - 9" Imperial Pansy 8 Ruffled Bowl - Amy. (nice irid.)
- ___329. 6" Imperial Diamond Lace 8 Ruffled Berry Bowl - Purp. (nice irid.)
- ___330. 9" Imperial Open Rose Flat Plate - Mari. (nice irid.)
- ___331. Imperial Lustre Rose 4 pc. Table Set - Mari. (chip on inside of creamer)
- ___332. 6 1/2" Imperial Grape Flat Plate - Dk. Mari. (nice color and irid.)
- ___333. 7 1/2 - 8" Imperial Grape Exterior Round Flared Bowl - Mari. (odd pattern; nice color)
- ___334. Imperial Open Rose Rose Bowl - Amber (scarce color)
- ___335. **IMPERIAL GRAPE 8 PC. WINE SET - GREEN (SCARCE SET; WINES HAVE A MARIGOLD OVERLAY)**
- ___336. (2) Imperial Grape Stemmed Wine Glasses - Green (selling choice; have a marigold overlay)
- ___337. Imperial Grape Wine Decanter Stopper and 3 Wines - Mari. (nice set)
- ___338. Imperial Grape 6 pc. Water Set - Mari. (nice color and irid.)
- ___339. Imperial Poinsettia Handled Milk Pitcher - Mari. (great color and irid.)
- ___343. Pair Imperial Premium Candlesticks - Smoke (scarce pair)
- ___344. Pair Imperial Starlyte Lamp Shades - Dk. Mari. (selling so much each for pair)
- ___345. Imperial Diamond Ring 8 Ruffled Bowl - Smoke
- ___346. 8" Imperial Windmill Deep Round Bowl - Odd Green (has an odd yellowish tint)
- ___347. Imperial Windmill Oval Relish Tray - Helios Green
- ___348. Imperial Ribbed Jack in the Pulpit Vase - Dk. Mari.
- ___349. Imperial Horseshoe Curve Lg. 8 Ruffled Bowl - Mari.
- ___350. Imperial Star and File domed Oval 2 Handled Relish Tray - Mari.
- ___351. 13 - 14" Imperial Smooth Panels Tall Swung Vase - Mari.
- ___352. Surprise!!! *Please "Be Wise" and Hang Around for this Item!*

FOR THE RESULTS OF THIS OR ANY BURNS AUCTION SERVICE AUCTION
SEND A SASE AND \$3.00 (INCLUDE NAME OR DATE OF AUCTION) TO:

EMMA TILTON
P.O. BOX 273, GNADENHUTTEN, OH 44629

