

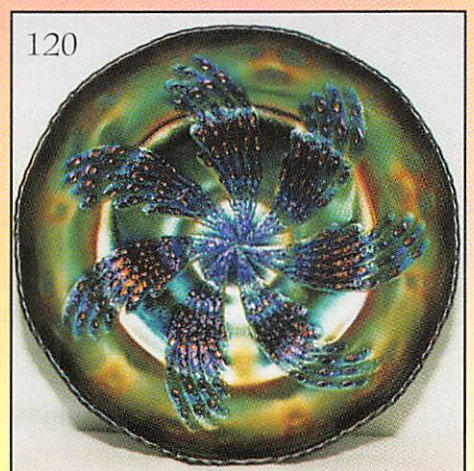
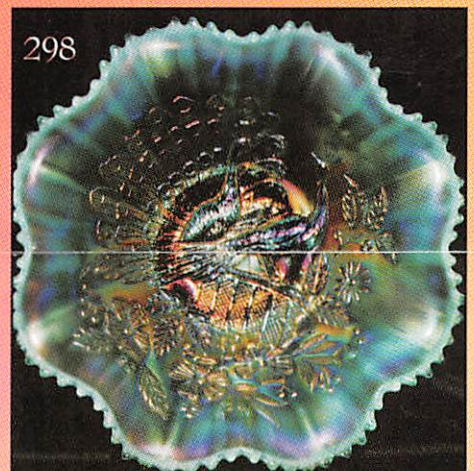
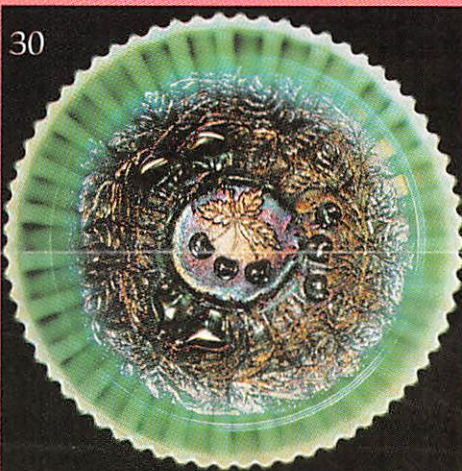
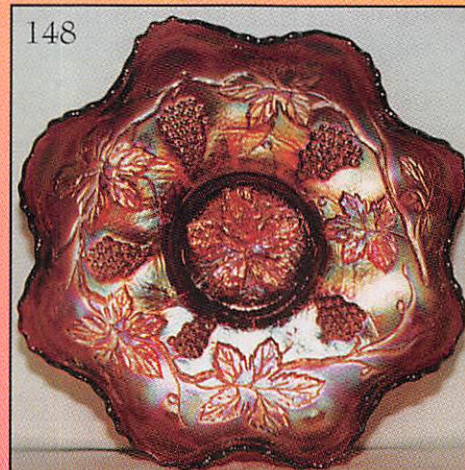
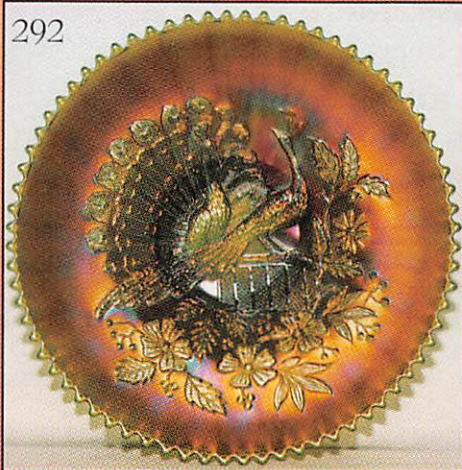
CARNIVAL GLASS AUCTION



Saturday, October 3, 1998



9:00 a.m.



Held Inside the Mickey Reichel Auction Center

Office: 660-882-5292 • Boonville, Missouri • Home: 660-882-5283



e-mail: mreichel@undata.com

See Mickey Reichel Auction Web Site on: [http://www.woodsland.com/woodsland/carnival glass](http://www.woodsland.com/woodsland/carnival%20glass)

NO BUYERS PREMIUM

Held Inside the Mickey Reichel Auction Center

1 Mile North of I-70 on Hwy. 5, Exit 101, Boonville, Missouri • 20 Miles West of Columbia, MO on I-70
Preview Friday 12 p.m. - 6 p.m. and 7:30 a.m. - 9:00 a.m. Day of Auction

Make Reservations **EARLY** at one of these local motels:


Days Inn: 660-882-8624 • Comfort Inn: 660-882-5317 • Super 8: 660-882-2900

Auction Consists of Rarity, Great Irid. and Variety


WRITE IN BIDS: If you are unable to attend the auction, we will be happy to accept absentee bids which must be received by THURSDAY, OCTOBER 1, 1998. Don't Delay. **FOR AUCTION PRICE RESULTS:** Send S.A.S.E and \$3.00 to 516 Third Street, Boonville, MO 65233.

THE BOB WILLIAMS COLLECTION OF SOUTH DAKOTA

PLEASE NOTE: There is a \$5 handling charge for each successful bid which will be added to the selling price for all write-in bids. This is in addition to the cost of postage, insurance and packing. Your write-in bid will be entered just as if you are present and bidding. **Successful bidders will be notified in 1 to 3 days by the auctioneer (so be sure to include your phone number).** Direct mail bids to Auctioneer Mickey Reichel, 516 Third Street., Boonville, MO 65233-1536. Terms: Cash or Check accepted with proper I.D. and Social Security Number and References. Announcements made day of the auction supercede all printed material. Not Responsible for Accidents or Sold Items. **No return on any items once they leave the Auction Center (No Exceptions).******

 **Call for additional information: 660-882-5292 days or 660-882-5283 evenings.**

FAX: 660-882-5292 (evening hours start FAX transmission after beep)

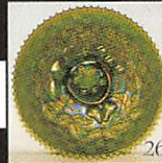
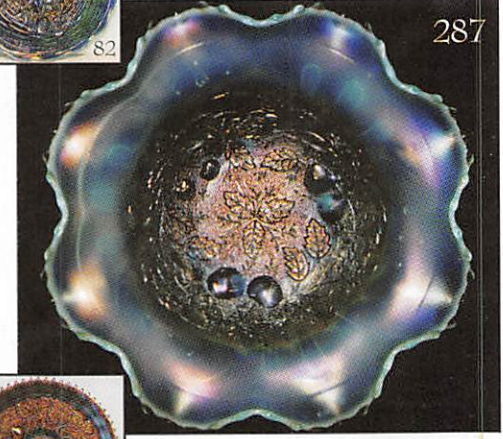
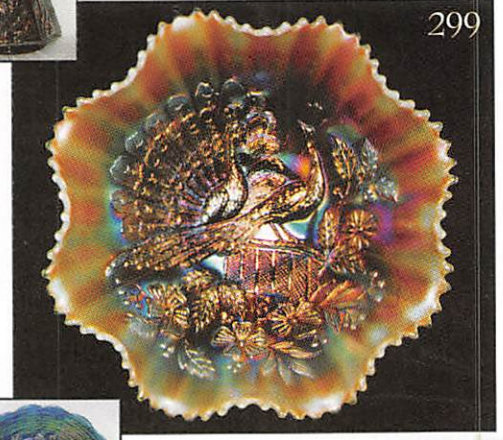
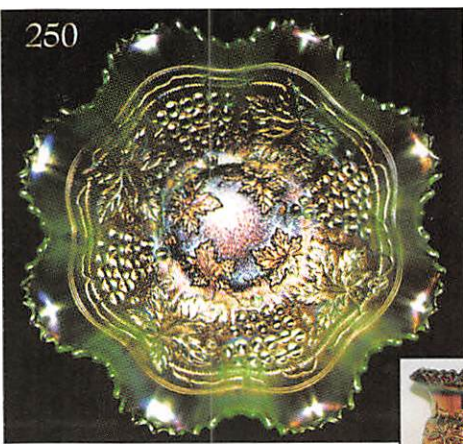
 **NOTE: Read each line, Bold and Plain print. Huge Quality Selection.**

MAIL BIDS: Items are bid on in perfect condition with average or above iridescence OR as listed in the brochures. Bids will not be carried out when damage on an item has been found during the auction. **PEOPLE PRESENT AT AUCTION ARE RESPONSIBLE FOR FINDING ANY PINHEADS, WEAR, SPOTTINESS, MANUFACTURER'S DEFECTS OR ANY OTHER MINOR FLAWS, ETC.**

WELCOME TO THE AUCTION

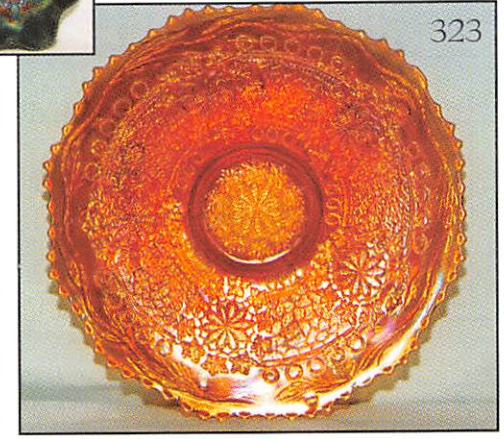
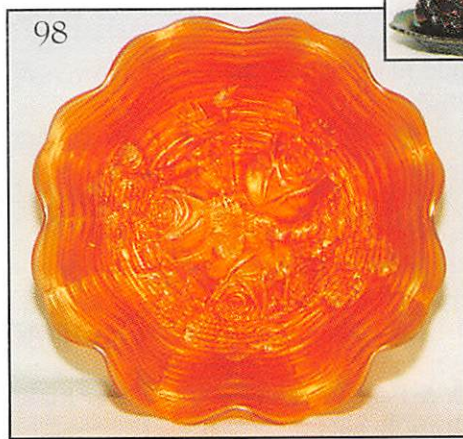
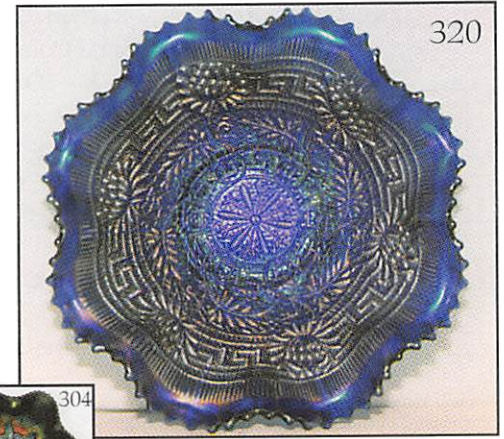
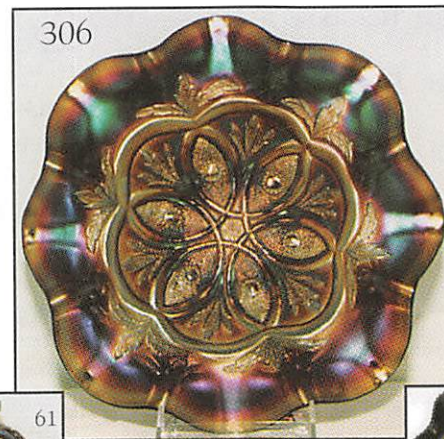
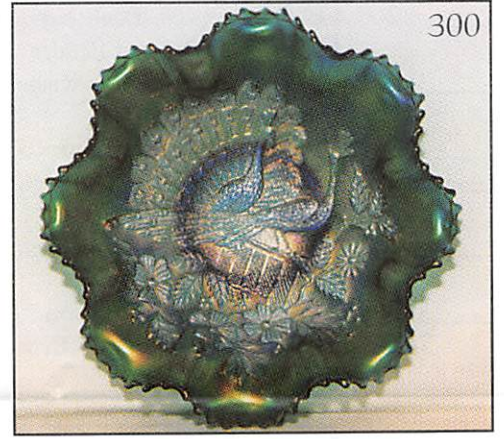
- | | |
|---|--|
| _____ 1. M - Imperial Grape Vintage Center Hld. Server | _____ 21. P.O. - Coin Spot Ruffle Compote |
| _____ 2. G - <u>N</u> Marigold Irid. on Bullseye and Leaves Bowl | _____ 22. P.O. - 8 ³ / ₄ " 10 Ruffle Plain Int. Single Flower Ext. Bowl |
| _____ 3. Powder B - Base Orange Tree Mug - 2 ¹ / ₂ " Base | _____ 23. P.O. - Ruffle Dugan Holly & Berry Ruffle, 8" Bowl - Great |
| _____ 4. M - 9" 6 Ruffle Peacock Tail Bowl - Very Pretty | _____ 24. P.O. - 8 ³ / ₄ " C.R.E. Single Flower Framed Bowl - Lots of Opal - Rays Int. |
| _____ 5. B - Collar Base 8 Ruffle Peacock and Grape Bowl | _____ 25. M - 8 ³ / ₄ " <u>N</u> B.W. Three Fruits Plate - Great Pinks & Blues |
| _____ 6. M - Super Radium Imp Grape Compote | _____ 26. Em. G - 9" <u>N</u> B.W. Three Fruits Plate - Super - Minor Wear on Fruit |
| _____ 7. Amberina - 8 ³ / ₈ " Plate Imp. Stretch - Colonial? | _____ 27. B - Stippled Three Fruits Rib Bk. Plate - Elec. |
| _____ 8. M - Great Dark Ruffle Fenton Peacock at Urn Compote | _____ 28. Lav.-A - Stippled Three Fruits Rib Bk. Plate - Multi Elec. - Light Fruit Wear |
| _____ 9. B - 6 Ruffle Fenton Holly Bowl - Super Multi Elec. | _____ 29. M - Stippled Three Fruits Rib Bk. Plate - Dark & Nice |
| _____ 10. P - <u>N</u> Town Pump - On Every Shoppers List | _____ 30. A.O. - Pastel - Stippled Three Fruits Rib Bk. Plate - Fabulous Find - Super |
| _____ 11. A - Radium Honeycomb and Clover Bon Bon | _____ 31. Topaz - #736 Rib Optic Cov. Candy Dish |
| _____ 12. M - Mlbg. 9" Ruffle Blackberry Wreath Bowl - Super Satin | _____ 32. White - Stretch #314 Rolled Rim - 5" Compote |
| _____ 13. P.M. - 7" Grapevine Lattice Plate | _____ 33. G - 8" C.R.E. Fenton Vintage Bowl - Beauty - Scarce Edge |
| _____ 14. P.M. - 8" Fishscale & Beads Plate - Radium - Rare Size | _____ 34. A - Ruffled - 8 ¹ / ₂ " Dome Base Star of David & Bows Bowl - Great |
| _____ 15. Aqua - 12 ³ / ₄ " Imp. Ripple Swung Vase - Scarce Beauty | _____ 35. Great M - I.C.S. 9 ¹ / ₂ " Mikado Compote - Lots of Blues & Pink Irid. |
| _____ 16. Rich Amber - 11 ¹ / ₄ " Ripple Vase - Radium Beauty | _____ 36. M - 9" Ball FTD. Rd. Fentonia Fruit Bowl - Scarce & Dark Example |
| _____ 17. M - 13" Ripple Vase - 4" Base - 6" Ruffle Top - Great | _____ 37. P - Singing Birds Cr. & Sugar Bowl - Sold as Pair - Chips on Sugar Bowl |
| _____ 18. M - 16" Ripple Vase - 4" Base - Swung 6" Top - Lot of Vase | _____ 38. P - Singing Birds Spooner |
| _____ 19. B - 16 ¹ / ₄ " Fenton Thin Rib Vase - Very Pretty | |
| _____ 20. Lav. A - 18 ¹ / ₂ " Tree Trunk Vase, 7 ¹ / ₂ " Top, 5 ¹ / ₄ " Plunger Base - Super - Funeral Vase | |

- _____ 39. **M - Stippled Rib Bk. Good Luck Bowl - Pinks & Golds**
- _____ 40. **M - B.W. Good Luck Bowl - Super Yellow & Pink Irid.**
- _____ 41. M - P.C.E., B.W. N Grape & Cable Bowl - Very Nice Example
- _____ 42. G - N Grape & Cable Bon Bon - Scarce & Pretty
- _____ 43. Amber - Imperial 9" Open Rose Plate - Chips on Roses - Very Pretty
- _____ 44. **M - Grape and Cable Candle Lamp Complete - Very Tough to Find**
- _____ 45. **M - Super Stippled & Banded Grape & Cable Banana Bowl - Magnificent**
- _____ 46. **M - Grape and Cable FTD. Center Piece Bowl - Also Great**
- _____ 47. **M - N Grape and Cable 11" Collar Base Ruffled Bowl - Super Too!**
- _____ 48. M - Stippled Rays & Scale Band 6³/₄" Plate - Dark
- _____ 49. M - Wreath Rose, Rose Bowl
- _____ 50. Clam. - Imperial 6" Round Heavy Grape Bowl - Just Beautiful
- _____ 51. **Super - Aqua Opal - 10¹/₄" Four Pillars Vase**
- _____ 52. Russet - 11¹/₄" Four Pillars Vase
- _____ 53. **B - N 9" Drapery Variant Vase - Multi Elec.**
- _____ 54. **M - N 9" Drapery Variant Vase - Pinks & Golds**
- _____ 55. B - 9¹/₄" C.R.E. Top Knotted Beads Vases - A or B
- _____ 56. G - 12" Plume Panels Vases - A or B
- _____ 57. Lime - 12¹/₄" Diamond Point Column Vase - M Top
- _____ 58. **Teal - 10" Corinth Vase - Scarce Radium**
- _____ 59. Russet - 11" Thin Rib N Vase
- _____ 60. A - 11¹/₂" Long Thumbprint Vase
- _____ 61. **Super - P - Imperial Hobstar Butter Dish - Elec. Inside & Out - Rare Beauty**
- _____ 62. **Honey Amber - Cosmos & Cane Butter Dish - Super Pretty**
- _____ 63. **Multi Super Elec. A - Butterfly and Berry Butter Dish - Rare - Outstanding Color**
- _____ 64. Multi Elec. A - Butterfly & Berry Sugar Bowl w/Lid
- _____ 65. G - 3 in 1 Toothpick Holder Imperial - Contemporary
- _____ 66. Lime & M - Smooth Ray Compote
- _____ 67. **A - 3 in 1 Edge Ragged Robin Bowl - Very Scarce & Pretty**
- _____ 68. M - Wine & Roses Wine Glasses - 2 x \$
- _____ 69. M - Interior Swirl & Panel Pitcher - Pg. 175 Ed. Bk.
- _____ 70. P.O. - Dome Base 10 Ruffle Rain Drops Bowl
- _____ 71. **Dark - I.B. - Fancy Int. Fine Cut & Roses, Rose Bowl - Rarity**
- _____ 72. Soft I.B. - Fancy Int. Fine Cut & Roses Rose Bowl - Pastel
- _____ 73. **Dark - M - Pl. Int. Fine Cut & Roses Rose Bowl**
- _____ 74. P.M. - Pl. Int. Fine Cut & Roses Rose Bowl
- _____ 75. G - Rib Int. N Daisy & Plume FTD. Rose Bowl - Sm. Chip on ft., Common
- _____ 76. M - I.C.S. Fenton Peacock and Urn Bowl - Scarce Shape
- _____ 77. **A - Paneled Dandelion Tankard - Multi Radium - Great Find**
- _____ 78. **Dark M - Bouquet Water Pitcher - Very Nice**
- _____ 79. **A - Butterfly and Fern Water Pitcher - Radium Amy. Irid.**
- _____ 80. M - 6¹/₄" Rib Int. Plain Ext., Deep, 6 Ruffle Bowl
- _____ 81. **P.O. - Nautilus Script Signed Northwood Bowl - Scarce**
- _____ 82. **B - Rose Show Plate - Elec. Blue Hi-lites**
- _____ 83. **M - Rose Show Plate - Darker than Most Pinks & Golds - Top of the Line**
- _____ 84. I.G. - Stretch #643 Bon Bon Lided Candy Dish
- _____ 85. A - 3 Fruits P.C.E., B.W. Bowl - Great Example
- _____ 86. Deep B - I.C.S. Collar Base Dragon & Lotus Bowl
- _____ 87. M - Radium Super Imperial Grape Tumbler
- _____ 88. M - Very Pretty Imp. Field Flowers Tumbler
- _____ 89. M - Fentonia Tumbler Scarce
- _____ 90. **M - 3 Dark, Nice Blackberry Block Tumblers - 3 x \$**
- _____ 91. P - N Grape and Cable Tumbler - Always Desirable
- _____ 92. B - Fenton Apple Tree Tumbler - Scarce
- _____ 93. **B - 9" Low 3 in 1 Ribbon Tie Plate - Beauty**
- _____ 94. **P.O. - Estate Sugar Adv. - Souvenir Alexadia, S.D.**
- _____ 95. M - Dark Imperial Flute Toothpick Holder
- _____ 96. G - Imperial Flute Toothpick Holder - Scarce Color
- _____ 97. **P - Super Multi Elec. Flute Toothpick Holder**
- _____ 98. **Super Pumpkin - M - Rose Show Bowl - Rich Pinks, Rose Irid.**
- _____ 99. **A.O. - Rose Show Bowl - Super Blues, Pinks & Gold Irid.**
- _____ 100. **Great I.G. - Rose Show Bowl - Lots of Blues**
- _____ 101. G - N Ray Int. Leaf Beads Rose Bowl - Nice Example
- _____ 102. **A - Fenton Flowers Rose Bowl - Scarce Color**
- _____ 103. P.O. - 4 - 5³/₄" Ruffled Ski Star & Compass Berry Bowl - 4 x \$
- _____ 104. **P.O. - 9¹/₄" Smooth Edge Apple Blossom Twig Plate - Dugan at its Best**
- _____ 105. W - 9" Slightly Turned Up Apple Blossom Twigs Plate - Blues & Golds
- _____ 106. **Scarce P.O. - 10", 6 Ruffle Dugan Cherrys Bowl - Jeweled Heart - Ext. Rare**
- _____ 107. **Rare Super P.O. - 11", 6 Ruffle Dugan Heavy Grape Bowl - Very Rare**
- _____ 108. P.O. - Single Flower Enamel Floral Int. 10 Ruffle Dugan Bowl
- _____ 109. P.O. - 10³/₄" 6 Ruffle Petal & Fan Jewel Heart Ext. Bowl - Great
- _____ 110. **Great P.O. - 9¹/₄" Dome Base Dugan Double Stem Rose Plate - Beauty**
- _____ 111. **Super W - 9¹/₈" Dome Base Dugan Double Stem Rose Plate - Blues & Purples**



- _____ 112. P - N Singing Birds Mug - Multi Electric
- _____ 113. Dark - M - N Singing Birds Mug
- _____ 114. **Rich Amber - J.I.P. Fenton Holly Hat - Very Scarce**
- _____ 115. **Amberina - J.I.P. Fenton Holly Hat - Nice**
- _____ 116. **Red - 2 Row Open Edge Basket - All Time Favorite**
- _____ 117. M - 5" Mini Morning Glory Vase - 4" Top - Little Beauty
- _____ 118. Multi Electric - P - Westmoreland Rayed Ruffle Compote
- _____ 119. A - N Dome Base Grape & Cable 5" Rd. Thumb Print Dish - Scarce
- _____ 120. **Super B - 9" I.C.S. FTD Fantail Bowl - Great Elec. Irid**
- _____ 121. P.M. - N 10½" Tree Trunk Vase - Pretty Item
- _____ 122. Alaskan G - 8" N Star Base Tree Trunk Vase - Scarce
- _____ 123. **M - Flared Top Daisy & Drape Vase - Dark & Scarce**
- _____ 124. **A.O. - Flared Top Daisy & Drape Vase - Old Favorite**
- _____ 125. I.G. - Plain Base N Corn Vase - Frosty
- _____ 126. **Lav. A - Mlbg. 5¼" Satin Peacock and Urn Small Variant - I.C.S.**
- _____ 127. **M - Mlbg. 9¼" Satin I.C.S. Peacock & Urn Master - Beautiful**
- _____ 128. **G - Mlbg. 9¼" Radium Ruffle Peacock Bowl - Beauty**
- _____ 129. **A - Mlbg. 9½" Radium Round Peacock Bowl - Beauty**
- _____ 130. **A - Mlbg. 10" Radium Ruffle Peacock Bowl - Super Example**
- _____ 131. M - Dia. and Sunburst Wine - Rd. Top - Dark
- _____ 132. M - Split Diamond Sugar Bowl w/Lid
- _____ 133. Beautiful G - Ruffle Lotus & Grape Bowl - Scarce
- _____ 134. **B - Grape and Gothic Arches - 7 Pc. Water Set - Great Set**
- _____ 135. **B - Grape and Gothic Arches 4 Place Table Set - Rare Find**
- _____ 136. M - Lattice & Points 8" Vase - Daisy in Base - Sm. Base Nick
- _____ 137. G - 9¼" Plume Panels Vase - Dandy One
- _____ 138. Celeste - 2⅜" Diameter Flower Frog
- _____ 139. P.M. - Grape and Cable Whiskey Decanter - Nice Find
- _____ 140. M - 9" Ruffle Radium Imperial Pansy Bowl
- _____ 141. Amber - Rd. - 7¼" Deep Imperial Open Rose Bowl - Beauty
- _____ 142. **Smoke - 9" Flared Super Imperial Hattie Bowl - Rare**
- _____ 143. **P - 8½" Ruffled Super Elec. Imperial Grape Bowl - Wow!**
- _____ 144. **P - 9" Ruffled Super Elec. Imperial Pansy - Wow!**
- _____ 145. B - Vintage Int. Wreath Rose Punch Cup
- _____ 146. I.B. - N Grape & Cable Punch Cups - 2 x 4
- _____ 147. A - Multi Elec. N Ruffled Blackberry B.W. Compote - Super
- _____ 148. **Super Red - 9", 8 Ruffle Vintage Grape Bowl - The Best**
- _____ 149. M - Kittens - Cup & Saucer - Nice Set
- _____ 150. M - Kittens 4 Ruffle Bowl - Great Detail
- _____ 151. Near Em. G - N Grape & Cable Powder Jar Base
- _____ 152. Multi Elec. - N Grape & Cable Powder Jar Base
- _____ 153. M - Beaded Shell Mug - Very Pretty Example
- _____ 154. **Very Scarce B - Beaded Shell Mug**
- _____ 155. **Very Scarce Radium M - Fisherman's Mug**
- _____ 156. M - Ruffled FTD Wishbone Bowl - Radium Silver
- _____ 157. Super M - 6 Ruffle Pony Bowl - Radium
- _____ 158. **A.O. - Pastel Beaded Cable Rose Bowl - Super Pink & Blue Irid.**
- _____ 159. A.O. - Pastel Leaf Beads Rose Bowl - Soft Hilites
- _____ 160. A.O. - Multi Irid N Drapery Rose Bowl - Always Desirable
- _____ 161. **Amber Horehound - N Bushel Basket - Rare Beauty**
- _____ 162. **Pastel I.B.O. - N Bushel Basket - Rarity**
- _____ 163. **A.O. - N Bushel Basket - Marigold Super Overlay w/Blues & Purples**
- _____ 164. L.G. - N Bushel Basket - Very Scarce Color
- _____ 165. B.O. - Not Iridized - Ruffled Three Fruits Bowl
- _____ 166. **Super Multi Irid. B - 7⅝" Fenton Vintage Plate**
- _____ 167. G - 7⅝" Fenton Vintage Plate - Pinks & Golds
- _____ 168. M - 7⅝" Fenton Vintage Plate - Pinks, Golds & Blues
- _____ 169. **B - 9¼" Captive Rose Plate - Super Elec. Blues & Golds**
- _____ 170. **M - 9¼" Captive Rose Plate - Pinks, Golds & Greens**
- _____ 171. A - 9" N Grape & Cable B.W. Plate - Always in Demand
- _____ 172. G - 8¾" N Grape & Cable B.W. Plate - Nice Example
- _____ 173. **Great Satin - Mlbg. 10¼" - 6 Ruffle Green, Blackberry Wreath Bowl**
- _____ 174. G - Mlbg. 2 Sides Up Holly Sprig Bon Bon
- _____ 175. G - Mlbg. 7¾" - 6 Ruffle Little Stars Bowl
- _____ 176. A - Mlbg. 10" - 6 Ruffle Rays and Ribbons Bowl - Beautiful Radium - Gold & Silver
- _____ 177. M - 10¾" Imperial Radium Beaded Bullseye - Very Pretty
- _____ 178. M - 12¼" N Thin Rib Mid Size Vase - 4¾" Base, 5½" Top - Beauty
- _____ 179. M - Orange Tree Hat Pin Holder - Great Color - Minor Foot Roughness
- _____ 180. **Rare Saph. - Ball FTD 10½", 8 Ruffle Square Shape Fenton Two Flowers Bowl - Very Rare**
- _____ 181. Great P - Grape & Cable Dresser Tray
- _____ 182. Deep Purple - Grape & Cable Banded Hat Pin Holder - Multi Elec.
- _____ 183. Scarce M - Stippled N Singing Birds Mug
- _____ 184. P - Corn Vase w/Flower on Base - Very Popular Vase
- _____ 185. A - 8¾" Rd. Feathered Serpent & Honey Comb Bowl

- _____ 186. A - 5" Rd. Feathered Serpent Berry Bowls - 3 x \$
- _____ **187. Saph. - Fenton Peacock at Urn Ruffle Compote - Rare Beauty**
- _____ 188. M - 9" Imperial Open Rose Plate - Very Pretty
- _____ 189. B.A. - Dragonflies or 3 Butterflies Hat Pin
- _____ 190. Sapphire - Rooster w/Painted Bk. Ground Hat Pin
- _____ 191. B - Rooster w/Painted Bk. Ground Hat Pin
- _____ 192. B.A. - Basket Flower Hat Pin
- _____ 193. B.A. - ? Center Flower Surround By Vines - Elec. Purple Irid. Pattern ?
- _____ **194. G - Dome Base 8 Ruffle Rare Dugan Vintage Bowl - Deep 8"**
- _____ **195. G - 10" Peacock Tail 3 in 1 Bowl - Star Base Rev. Vt. - 1 of 3 Known**
- _____ 196. B - Large C.R.E. Ruffle Persian Medallion Compote - Very Scarce
- _____ 197. Reddish A - 7 1/4" Leaf Beads Nut Bowl - Sunflower Int. - Great
- _____ 198. Dk. M - 7" Leaf Beads Nut Bowl - Sunflower Int. - A Beauty
- _____ 199. P - N Stippled Strawberry Bowl - Multi Blue, Purples & Golds - Very Nice - Rare Find
- _____ **200. Rare - I.B. - P.C.E. Hearts and Flowers Bowl - Blues, Pinks & Golds**
- _____ **201. Rare - 8 5/8", 2 Sides Up, 3 Row, O.E. Bowl - Celeste - B.W. Ext. - Big Beauty**
- _____ 202. Scarce - 6 Ruffle A Concord Bowl - Toughie
- _____ **203. Beautiful A - 3 in 1 Concord Bowl - 1 of the Best**
- _____ 204. G - 6 Ruffle Concord Bowl - Also Super
- _____ 205. A - 9" N Strawberry B.W. Plate - Super Multi Elecs.
- _____ **206. P.M. - P.C.E. N Stippled Strawberry Bowl - Rib Bk. - Scarce Shape**
- _____ 207. A - P.C.E. N Strawberry B.W. Bowl - Nice Example
- _____ **208. B.O. - Westmoreland 9" Ruffle Scales Bowl - Tough to Find**
- _____ **209. B.O. - Westmoreland 9" Ruffle Rays Bowl - Also Tough**
- _____ **210. Persian B.O. - Westmoreland Plain Ribbed Two Seventy Compote - Rare**
- _____ 211. P - N 10 1/4" I.C.S. Peacock at Urn Bowl - Very Pretty
- _____ 212. A - N 5 1/2" I.C.S. Peacock at Urn Sauce Bowl
- _____ **213. P - N 10 1/2" Peacock at Urn Chop Plate - Very Under Valued - Very Nice Find**
- _____ 214. P - N Singing Birds Water Pitcher - Nice Multi Irid.
- _____ 215. P - N Singing Birds Tumblers - Choice - A, B, C, D
- _____ **216. M - 4" Cambridge #2658 Near Cut Creamer - Souv. Vesta Minn.**
- _____ 217. Dark M - 10" Ball FTD Little Fishes Ruffled Bowl - Scarce & Nice
- _____ 218. P - 8 3/4" Fenton Coin Dot Plain Deep Plate - 2" Off Table
- _____ 219. P - 7 1/2" Tri-Corner Dugan Plain Int. & Beads and Flowers Plate
- _____ **220. Great M - Blossom Time Compote - Pinks, Blues & Yellows**
- _____ **221. I.B. - Beautiful 3 Side Lilys for Wide Panel Epergne**
- _____ 222. Pair N Opaque Jade Blue 8 1/4", #657 Candlesticks - Great
- _____ 223. Opaque Jade Blue - 5 1/4", #617 Bowl w/ Black Base - Beauty
- _____ 224. Pair N Opaque Jade Blue 6 3/4", #658 Candlesticks - Great
- _____ **225. Brick Red - 7 1/2", 8 Ruffle Fenton Acorn Bowl**
- _____ 226. Dark Dk. Red - 6 1/4" Rd. Fenton Grape & Cable Bowl - 2 3/4" Deep - Base Chips
- _____ **227. Vas. - 2 Sides Up Fenton Holly Hat - M - Overlay - Super**
- _____ **228. Vas. - Ruffle Fenton Holly Hat - M - Overlay - Super**
- _____ **229. G - Acorn & Burrs Punch Bowl & Base - 1/4" Rd. Ding Inside**
- _____ 230. G - 4 Acorn & Burrs Punch Cups - 4x\$ - Nice Match
- _____ 231. P - N 9 1/2" Acorn Burrs Master Berry Bowl
- _____ 232. M - N 9 1/2" Acorn Burrs Master Berry Bowl
- _____ 233. M - Ruffle Concord Bowl - A Big Favorite
- _____ 234. Great M - 10 1/4" Ball FTD Chrysanthemum Bowl - Beautiful - 8 Ruffles
- _____ **235. P.M. - Great Pinks, Golds & Blue Irid. - Collar Base Peacock & Grape Plate**
- _____ **236. M - Radium 10 Ruffle Brooklyn Bridge Bowl - Scarce Shape**
- _____ 237. M - N Strawberry B.W. 9" Plate - Blues, Pinks & Oranges
- _____ 238. B - Collar Base 7 Ruffle Dragon & Lotus Bowl - Pretty
- _____ **239. Super Pinks, Blues & Yellows on a W - 7" Persian Garden Plate - Pool of Pearls**
- _____ 240. P - Rib Bk. Ruffled Good Luck Bowl - Multi Irid.
- _____ **241. A.O. - Pinks, Blues, Yellows, & Golds on a Rare Ruffle Good Luck Bowl**
- _____ 242. P - 9" Good Luck B.W. Plate w/Multi Greens, Golds & Blue Irid.
- _____ **243. B - P.C.E. Rib Back Good Luck Bowl - Elec. B, w/Lite Purples**
- _____ 244. A - P.C.E. Rib Back Good Luck Bowl - Multi Elec.
- _____ 245. B - N Stippled Rib Bk. Ruffled Grape & Cable Bowl - Blues, Purples & Golds
- _____ **246. Saph. Base - N Rib Bk. Ruffle Grape & Cable Stippled Bowl - Pinks & Golds Irid.**
- _____ **247. Rare I.B. - Stippled P.C.E. Stippled Grape & Cable Bowl**
- _____ 248. P - Gorgeous P.C.E. Grape & Cable Bowl - Smooth Bk. - Multi Elec.
- _____ **249. G - 9" Stippled Grape & Cable Rose Distilling Adv. Plate - Super**
- _____ **250. Rare, Rare I.G. - Stippled Ruffle Grape & Cable Bowl**



- _____ 251. M - FTD 10¼" Deep Persian Medallion Grape & Cable Fruit Bowl - Pinks, Yellows & Blues
- _____ 252. Greenish Teal - Fenton Ruffled Holly Bowl - Glows Under Black Lite
- _____ 253A. Is a M - Very Nice Dark, Top to Bottom, Mary Ann Vase
- _____ 253B. Is a A - Dugan Mary Ann Vase - Great Multi Irid Example
- _____ 254. **P - Imperial 7 Pc. Lustre Rose - Great Water Set - Rare**
- _____ 255. P - Imperial 8 Pc. Grape Water Set - Super
- _____ 256. G - N 7 Pc. Grape & Cable Water Set - Great One
- _____ 257. G - N 7 Pc. Singing Birds Water Set
- _____ 258. **M - N Peacock at Fountain Punch Bowl & Base - Dark Pink Int.**
- _____ 259. **P - N 7 Pc. Peacock at Fountain Punch Set - Extremely Nice**
- _____ 260. I.B. - P.C.E. Rib Back Nippon Bowl - Beautiful Multi-Irid. - Popular Pattern
- _____ 261. **G - 9" Imperial Open Rose Plate - Not Helios - Dandy & Scarce**
- _____ 262. Dugan Scarce B - 9" Flat Round Up Plate
- _____ 263. **Super M - Fenton Peacock and Urn 8 Ruffle Bowl - Super Example**
- _____ 264. **B - Multi Elec. Fenton Peacock and Urn Bowl - 6 Ruffle - Beautiful**
- _____ 265. **B - Fenton Super Radium Peacock at Urn Plate - Minor Sharp Point - Brother to One Sold at H.O.C.G.A.**
- _____ 266. M - Fenton Peacock and Urn Plate - Lots of Pinks & Golds
- _____ 267. Looks Red - A - Ruffled Orange Tree Bowl - Great Example - Scarce Color
- _____ 268. **Super Multi -Elec. B - Orange Tree Plate - Beautiful**
- _____ 269. **A - 6½" Roods Chocolates Plate - Super - 1 of Approx. 4 Known - Hot! - Top of the List**
- _____ 270. **A - 6½" Hand Grip Dreibus Parfait Sweets Plate - Adv. is Hot**
- _____ 271. A - Ruffled Isaac Benesch & Sons Bowl - 1 of the Best
- _____ 272. **M - Flat 9½" Spector's Department Store Plate - Rates Up There**
- _____ 273. P - 6½" Flat Wishbone & Spades Plate - B.W. Ext. - A Beauty
- _____ 274. W - Hearts and Flowers Pl. Bk. Compote - Frosty
- _____ 275. **I.B. Opal - Pastel Hearts & Flowers Compote - Soft Irid.**
- _____ 276. **Pastel A.O. - Hearts & Flowers Compote - Pinkish & Bluish Irid.**
- _____ 277. B - Hearts & Flowers Compote - Elec. Blues, Purples & Golds
- _____ 278. P - Hearts & Flowers Compote - Elec. Blues, Purples & Golds
- _____ 279. B - N Poppy Pickle Dish - Super Elec - Blues, Golds & Pinks
- _____ 280. P.O. - Dugan 9" Collar Base 6 Ruffle Bells & Beads Bowl - Super
- _____ 281. **Rare W - Dugan 8¾" Collar Base 6 Ruffle Bells & Beads Bowl - Not Listed**
- _____ 282. **W - Collar Base Stippled N 3 Fruits Rib Bk. Bowl - Blues, Golds & Pinks**
- _____ 283. W - N Poppy Show Bowl - Beautiful - Blues, Pinks & Yellows
- _____ 284. W - Rare Shape 3 in 1 Fenton Holly Bowl - Great - Not Listed
- _____ 285. **A.O. - Collar Base Stippled Three Fruits Bowl - The Way You Like**
- _____ 286. **Favorite A.O. - Three Fruits Stippled Spat. FTD Meander Bowl - Great**
- _____ 287. **Soft B.O. - Three Fruits Stippled Spat. FTD Meander Bowl - Neat Color**
- _____ 288. M - P.C.E. N Peacocks Bowl - Rib Back
- _____ 289. A - P.C.E. N Peacocks Bowl - Rib Back - Golds, Blues & Purple Irid.
- _____ 290. A - Ruffled N Peacocks - Rib Back Bowl - Multi Irid.
- _____ 291. **P.M. - Rare Ruffle Peacocks Bowl N w/B.W. Back - Yellows, Greens & Blues**
- _____ 292. **G - Very Scarce N Peacocks Plate - Rib Bk. - Blues, Golds & Green Irid.**
- _____ 293. **P.M. - N Peacocks Plate w/Rib Bk - Lots of Hot Pink Irid.**
- _____ 294. B - Stippled N Peacocks Plate - Rib Bk. - Blues, Purples & Golds
- _____ 295. **Great I.B. - N Peacocks Plate - Rib Bk. - Blues, Pinks & Yellows**
- _____ 296. Lime I.G. - N Peacocks Plate - Rib Bk. - Blues & Golds
- _____ 297. I.G. - N Peacocks Plate - Rib Bk. - Blues, Golds & Pink Hi-lites
- _____ 298. **Gorgeous - Pastel A.O. - Peacocks Bowl - Rib Back**
- _____ 299. **Gorgeous - A.O. Butterscotch & Pinks Peacocks Bowl - Rib Bk.**
- _____ 300. **Reninger B - Ruffled Rib Back N Peacocks Bowl - Beauty & Rare**
- _____ 301. A - Looks Red - Fenton Holly Plate - Fabulous Unusual Irid.
- _____ 302. Super M - Fenton Holly Plate - Pinks, Green, Orange Irid.
- _____ 303. **P - One of the Top Butterfly & Tulip Bowls Sold in a Long Time**
- _____ 304. **P - 10½" Super Elec. 6 Ruffle Dugan Petal & Fan Bowl**
- _____ 305. Scarce Multi Elec. - C.R.E. Tri-Corner Flowers & Frames Bowl
- _____ 306. **Very Scarce 11¼", 8 Ruffle Sq. Shape Dugan Victorian Bowl - Great Example**
- _____ 307. Dugan A - 9", 10 Ruffle Apple Blossom Twig Collar Base Bowl - Outstanding
- _____ 308. **P - Tri-Corner 4½" Amaryllis Mini Compote - Very Scarce & Desirable**
- _____ 309. Great P.O. - Low Ruffle Round Up Bowl or Plate - Very Pretty
- _____ 310. **M - Peach & Pear Banana Bowl In Silver Plate Frame - Rare Beauty**

- _____ 311. **M** - Concave Diamond Pickle Caster in Silver Plate Frame - Really Neat
- _____ 312. **A** - One of the Best Examples of Puzzle Bon Bons w/Floral and Wheat Ext. - Multi Elec. All Over
- _____ 313. **A** - Grape Delite Deep Nut Bowl - 6 Little Feet - Elec Irid. - Plain Int.
- _____ 314. **Rare G** - Square Shape 8 Ruffle Peter Rabbit Bowl - Pinks, Golds & Silvers
- _____ 315. Near Pumpkin **M** - Poppy Show Plate - Vibrant Irid - Pinks & Golds
- _____ 316. **Ultra Rare Blue** - Gorgeous Grape & Cable Sweet Meat w/Lid - Edge Damaged - You Have to Really Look to Find - Few Known
- _____ 317. **P** - Grape & Cable Sweet Meat w/Lid - Very Nice One
- _____ 318. **W** - Rare - Beautiful Multi Irid. Grape & Cable Cracker Jar & Lid - Little Nick in the Rim
- _____ 319. **A** - Ruffled **N** Rib Bk. Embroidered Mums Bowl - Scarce Color
- _____ 320. **B** - Ruffled **N** Rib Bk. Embroidered Mums Bowl - Elec.
- _____ 321. **I.B.** - Ruffled **N** Smooth Bk. Embroidered Mums Bowl - Rainbow Irid.
- _____ 322. Elec. **B** - Scarce 10 $\frac{1}{2}$ " , 6 Ruffle Cherry Chain Bowl - Super - Wow!
- _____ 323. Luscious **M** - Flat 9 $\frac{1}{4}$ " Leaf Chain Plate - Gorgeous Pinks, Blues & Yellows
- _____ 324. **Dk. M** - Spat. FTD Stag and Holly Plate - Great Pinks, Blues & Golds - Very Scarce
- _____ 325. **P** - **N** FTD Ruffled Poinsettia Bowl - Blues, Purples & Golds - Hot Pattern
- _____ 326. **A** - Very Scarce Ball FTD 8 Ruffle Horse Medallion Bowl - None Listed
- _____ 327. **A** - Mlbg. 9 $\frac{1}{2}$ " , 6 Ruffle Radium Many Stars - Super
- _____ 328. **A** - Mlbg. 10" I.C.S. Scalloped Fleur De Lis Bowl - Super Radium
- _____ 329. **A** - Mlbg. 9 $\frac{3}{4}$ " , 6 Ruffle Radium Elec. Swan Bowl - Super
- _____ 330. **A** - Mlbg. 8 $\frac{1}{4}$ " I.C.S. Satin Trout & Fly Bowl - Blues, Pinks & Golds
- _____ 331. **G** - Super P.C.E. **N** Grape & Cable B.W. Bowl - Em. G. w/Gold Hi-Lites
- _____ 332. **Red** - 7 $\frac{1}{2}$ " Fenton Collar Base 8 Ruffle Grape & Cable Bowl
- _____ 333. **A.O.** - Fruits & Flowers Compote - Pinks & Golds
- _____ 334. **A.O.** **Rare** - Fine Cut & Rose FTD Candy Dish - Chips on Feet - So?
- _____ 335. **W** - 8 Sided **N** Bushel Basket - Scarce & Frosty
- _____ 336. **Lime I.G.** - **N** Drapery Tri-Cornered Candy Dish - Rare Color - Good Feet
- _____ 337. **B** - Super Spat. FTD Two Flowers Rose Bowl - Beautiful Multi Irid. - Top of the Line
- _____ 338. **P** - 9 $\frac{3}{8}$ " Lined Lattice Multi Elec. - Great Vase
- _____ 339. **B** - 9 $\frac{3}{4}$ " Tree Trunk Vase - Pretty - Tough Color
- _____ 340. **MMG** - **J.I.P.** 9" Corinth' Vase - Rare and Very Pretty
- _____ 341. **I.G.** - 11" **N** Diamond Points Vase - Scarce Color
- _____ 342. **M** - 9 $\frac{1}{2}$ " Footed Prisms Panel Vase
- _____ 343. **G** - Super Radium Elec. Hob Nail Mlbg. 10" Swirl Vase - Peeling Around Top
- _____ 344. **P** - Rare Size 9 $\frac{3}{4}$ " Pulled Loop Vase - 4 $\frac{3}{4}$ " Top - 3 $\frac{3}{4}$ " Base - Radium
- _____ 345. **A** - Imperial Balloons Blank Vase - Elec. Radium
- _____ 346. Smoke - Imperial Balloons Blank Vase - Elec. Radium
- _____ 347. **A** - **N** Blackberry & B.W. Rev. Compote
- _____ 348. **M** - Fenton Peacock and Urn Ruffled Compote
- _____ 349. **A** - Extra Nice P.C.E. **N** 3 Fruits Bowl w/B.W. Ext.
- _____ 350. **P** - 4 $\frac{3}{4}$ " **N** Acom Burrs Berry Bowl - Multi Elec. - Dandy

AUCTION CALENDAR

NOVEMBER 6TH & 7TH

JOHN & LUCILE BRITT COLLECTION

JANUARY 2, 1999

8TH ANNUAL EXTRAVAGANZA

MARCH 13, 1999

APRIL 3, 1999

Call us today for your auction of 1 piece or an entire collection. Booking now for 1999. A few spots left in the New Years' Auction.

If you haven't been to Boonville, MO and attended a Mickey Reichel Auction, I'm extending a special invitation to one of our very best yet.

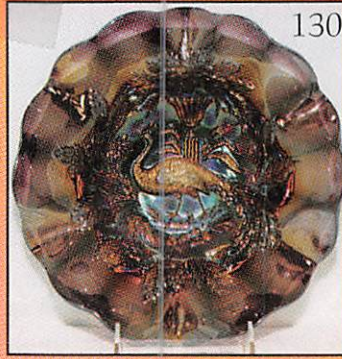
Thank You, Mickey



128



328



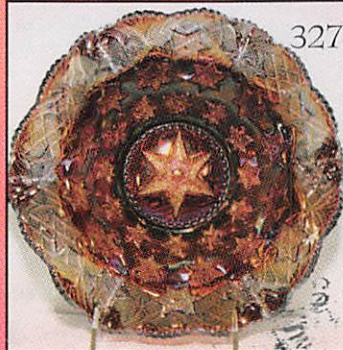
130



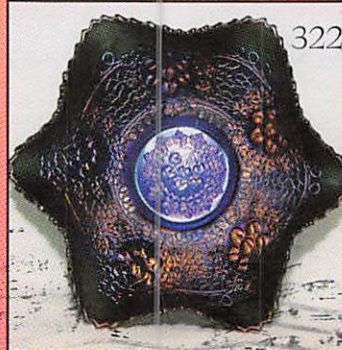
329



332



327



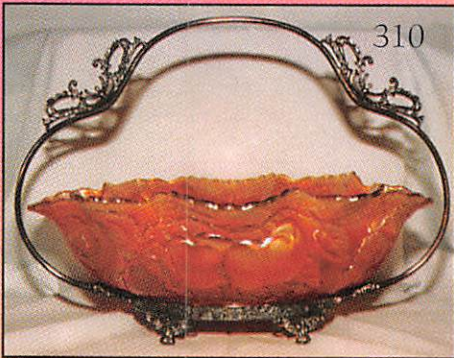
322



325

MICKEY REICHEL ANTIQUE & AUCTION, L.C.

516 THIRD STREET
BOONVILLE, MO 65233-1536



310



311



FIRST CLASS MAIL

SPECIAL INVITATION TO:

