

CARNIVAL GLASS AUCTION



Session #1: Friday, SEPTEMBER 18, 1998 - 6:00 p.m.
Session #2: Saturday, SEPTEMBER 19, 1998 - 9:00 a.m.

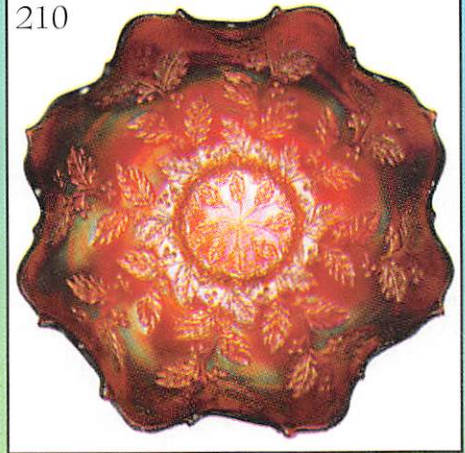
250



372



210



329



225



414



397



410



318



Held Inside the Mickey Reichel Auction Center
Office: 660-882-5292 • Boonville, Missouri • Home: 660-882-5283
e-mail: mreichel@undata.com
See Mickey Reichel Auction Web Site on: http://www.woodsland.com/woodsland/carnival_glass

NO BUYERS PREMIUM

Held Inside the Mickey Reichel Auction Center

1 Mile North of I-70 on Hwy. 5, Exit 101, Boonville, Missouri • 20 Miles West of Columbia, MO on I-70
Preview Friday 12 p.m. - 6 p.m. and 7:30 a.m. - 9:00 a.m. Day of Auction

Make Reservations **EARLY** at one of these local motels:


Days Inn: 660-882-8624 • Comfort Inn: 660-882-5317 • Super 8: 660-882-2900

Auction Consists of Rarity, Great Irid. and Variety


WRITE IN BIDS: If you are unable to attend the auction, we will be happy to accept absentee bids which must be received by THURSDAY, SEPTEMBER 17, 1998. Don't Delay. **FOR AUCTION PRICE RESULTS:** Send S.A.S.E and \$3.00 to 516 Third Street, Boonville, MO 65233.

JIM AND FLOOD WELLS * COLLECTION OF OHIO

PLEASE NOTE: There is a \$5 handling charge for each successful bid which will be added to the selling price for all write-in bids. This is in addition to the cost of postage, insurance and packing. Your write-in bid will be entered just as if you are present and bidding. **Successful bidders will be notified in 1 to 3 days by the auctioneer (so be sure to include your phone number).** Direct mail bids to Auctioneer Mickey Reichel, 516 Third Street., Boonville, MO 65233-1536. Terms: Cash or Check accepted with proper I.D. and Social Security Number and References. Announcements made day of the auction supercede all printed material. Not Responsible for Accidents or Sold Items. **No return on any items once they leave the Auction Center (No Exceptions).******

 **Call for additional information: 660-882-5292 days or 660-882-5283 evenings.**

FAX: 660-882-5292 (evening hours start FAX transmission after beep)

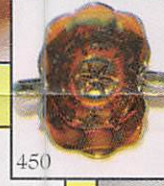
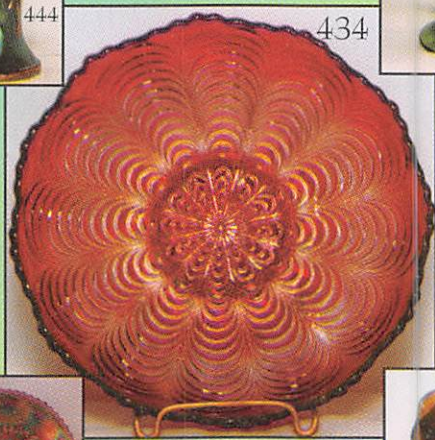
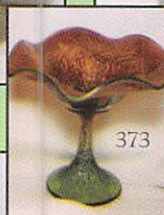
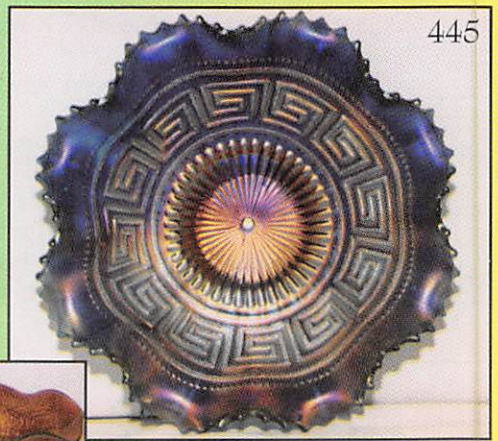
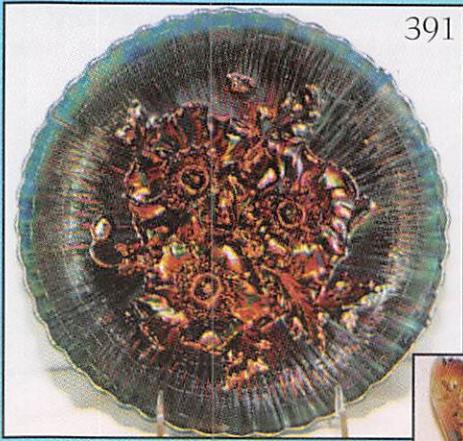
 **NOTE: Read each line, Bold and Plain print. Huge Quality Selection.**

MAIL BIDS: Items are bid on in perfect condition with average or above iridescence OR as listed in the brochures. Bids will not be carried out when damage on an item has been found during the auction. **PEOPLE PRESENT AT AUCTION ARE RESPONSIBLE FOR FINDING ANY PINHEADS, WEAR, SPOTTINESS, MANUFACTURER'S DEFECTS OR ANY OTHER MINOR FLAWS, ETC.**

DAY 1 - SEPT. 18, 1998 - 6:00 P.M.

- | | |
|---|--|
| _____ 1. M - Banded Grape Mug - Radium | _____ 25. B - 7/4" Leaf Chain Plate |
| _____ 2. M - 6 1/4" Imp. Grape Plate - Dark | _____ 26. Teal - Lg. 8 1/2" Round Blackberry & Butterfly Bowl - 1st I've Seen - Rare |
| _____ 3. M - Lustre Rose Imp. Cr. & Sugar - Nice Pair | _____ 27. P - N 8 Sided Basket |
| _____ 4. M - Super Pineapple Sm. Creamer | _____ 28. M - N 8 Sided Basket |
| _____ 5. A - Mlbg. Swirl Rose Bowl - Rim Chip | _____ 29. P - N Fruits and Flowers Bon Bon |
| _____ 6. M - Mlbg. Swirl Rose Bowl - Base Chip | _____ 30. M - Imperial Grape Pitcher & 4 Tumblers - Few Nicks |
| _____ 7. Amber - Imp. Pansy Oval Relish - Scarce | _____ 31. G - 9" Leaf Chain Plate - Silver Satin Irid. |
| _____ 8. Amber - Imp. Open Rose 8" Bowl | _____ 32. Lav. - M-Overlay Collar Base, Ruffle Dragon & Lotus Bowl - Scarce |
| _____ 9. Amber - Imp. Open 9" Plate - Pinks & Golds | _____ 33. M - Mlbg. 10 1/2" Ruffle Peacock and Urn Bowl - Dark Satin |
| _____ 10. Clam - Imp. Lustre Rose Water Pitcher - Scarce | _____ 34. B - Imperial Lustre Fernery Bowl - Very Scarce |
| _____ 11. P - Dugan Fishnet Epergne - Scarce & Pretty | _____ 35. W - Contemporary I.G. Homestead Chop Plate |
| _____ 12. B - Captive Rose 9" Plate - Great Silver & Gold Irid. | _____ 36. P - Question Mark Compote - Base Chip |
| _____ 13. P - 7 3/4" Imp. Scroll and Embossed Bowl - Radium Elec. | _____ 37. P - Acorn Burrs Punch Cups - 2 for 1 - 1 Base Chipped |
| _____ 14. Violet - 11"-8 Ruffle Imp. Grape Bowl - Radium Elec. - Big Beauty | _____ 38. W - Dugan Question Mark Ped. Plate - Geo. Belle Ext. - Super - Base Chip |
| _____ 15. G - P.C.E. N Three Fruits B.W. Bowl | _____ 39. M - Fenton Ruffle Peacock & Urn Bowl - Dark |
| _____ 16. G - P.C.E. N Good Luck B.W. Bowl - Scarce Shape & Color | _____ 40. P - 11 1/2" Ripple Vase - 5" Top - Multi Radium Elec. |
| _____ 17. B - 11" Flute Vase - 3 3/4" Base - Rare Color | _____ 41. G - Imperial Pansy Ruffle Relish |
| _____ 18. M - 14" Ripple Vase - 8" Open Top - 4 1/4" Base - No Harm Base Chip - Big Boy | _____ 42. P - Imperial Grape 9" Low Ruffle Bowl - Super Elec. - Beautiful Bowl |
| _____ 19. A - FTD. Wishbone Bowl - Nice | _____ 43. P - Mlbg. 5 1/2" Rd. Peacock Bowls - A or B |
| _____ 20. B - Rambler Rose Tumbler - Great | _____ 44. A - 9 3/4" Mlbg. 3 in 1 Zig Zag Bowl - Radium Beauty - Multi Irid. |
| _____ 21. A - Imp. Grape Tumbler - Radium | _____ 45. M - 9 1/2" Mlbg. 3 in 1 Zig Zag Ruffle Bowl - Radium Beauty - Multi Irid. |
| _____ 22. Powder Blue - 2 Sides Up 7 3/4" Open Edge Bowl - Very Scarce | _____ 46. G - N Wishbone FTD Bowl - Scarce Color |
| _____ 23. B - 9 1/2" Low 3 in 1 Ruffle Fenton Holly Bowl or Plate? - 1 7/8" Off Table | _____ 47. G - 9" Mlbg. Blackberry Wreath - 3 in 1 Bowl - Satin Beauty |
| _____ 24. M - Radium 3 in 1 Crimped Fanciful Low Bowl or Plate | |

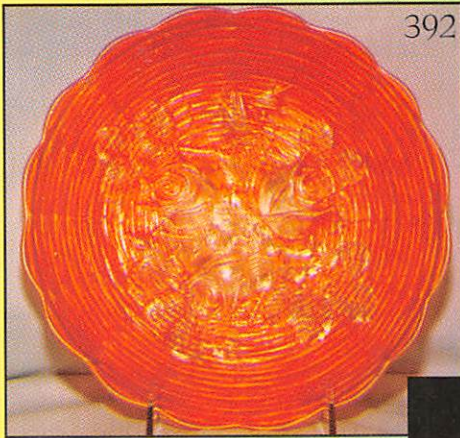
- _____ 48. G - 8 $\frac{3}{4}$ " Mlbg. Blackberry Wreath Ruffle Bowl -
Satin Beauty
- _____ 49. A - 8 $\frac{1}{4}$ " Mlbg. Blackberry Wreath Rd. Bowl - Light
Radium
- _____ **50. Rare - M-8 $\frac{3}{4}$ " 10 Ruffle Dugan Stippled Weeping
Cherry Bowl - Very Scarce**
- _____ 51. Saph. - 11" Big Basket Weave Vase - Not Irid.
- _____ **52. Rare - N Grape & Cable Tankard Pitcher - Base
Cracked - 5 Known - Very Pretty**
- _____ **53. P - N Grape & Cable Hat Pin Holder - Multi Elec.
- A Favorite**
- _____ 54. P - 13 $\frac{3}{4}$ " Imp. Ripple Vase - Pretty
- _____ 55. Amber - 11 $\frac{1}{4}$ " Imp. Ripple Vase - Scarce Beauty
- _____ **56. Smokey Bluish - 10 $\frac{1}{2}$ " N Tree Trunk - Neat Color**
- _____ 57. A - 11 $\frac{1}{2}$ " Plume Panels Vase - Multi
- _____ 58. M - 11 $\frac{1}{4}$ " Plume Panels Vase - Dark
- _____ 59. M - 9 $\frac{1}{2}$ " N Thin Rib Vase
- _____ 60. Olive - 9 $\frac{3}{4}$ " N Thin Rib Vase
- _____ 61. G - 11 $\frac{3}{4}$ " April Showers Vase - A Beauty
- _____ **62. G - 16" Rustic Vase Swung 4 $\frac{1}{4}$ " Base**
- _____ **63. B - 13 $\frac{3}{4}$ " CRE. Top Rustic Vase - 4 $\frac{1}{4}$ " Base -
Beauty**
- _____ 64. B - 15" Spear Head & Dia. Vases - A or B
- _____ **65. A - 15 $\frac{1}{2}$ " Mlbg. Hobnail VT. - 4 $\frac{1}{8}$ " Base**
- _____ 66. M - Pr. Premium Candlesticks - Rich Radium
- _____ **67. Celeste - N #657 Pr. Candlesticks - 8 $\frac{1}{2}$ "**
- _____ **68. Saph. - N #657 Pr. Candlesticks - 8 $\frac{1}{2}$ "**
- _____ **69. Russet - N #657 Pr. Candlesticks - 8 $\frac{1}{2}$ "**
- _____ 70. M - Pr. 7 $\frac{1}{4}$ " Candlestick Vases - Very Neat
- _____ **71. A - 8 $\frac{1}{4}$ " Butterfly and Berry Vase - Scarce Color**
- _____ 72. M - 9 $\frac{1}{4}$ " Butterfly and Berry Vase
- _____ 73. G - N 6 $\frac{1}{4}$ " Feathers Vase - 5" Top - 3 $\frac{3}{4}$ " Base -
Squatty
- _____ 74. Powder Blue - 10" Fenton Fine Rib - Scarce Color
- _____ **75. M - 12" Imp. J.I.P. Morning Glory Vase - 7" Top
- 4" Base - WOW!**
- _____ 76. P.O. - Dugan 6" Wide Rib #1016 Vase - Neat Shape
- _____ 77. M - 7 $\frac{1}{4}$ " Morning Glory Stick Vase
- _____ **78. P - N 3 Fruits B.W. Plate - Multi Beauty**
- _____ 79. Smokey Olive - N Grape and Cable B.W. Plate -
Unusual Color
- _____ 80. Pastel A.O. - Fine Cut and Roses Candy Dish - Base
Chip - Rare Color
- _____ 81. Lime - 3 in 1 Stippled Rays 9" Bowl
- _____ 82. Clam. - Imp. Floral Optic - 10 $\frac{3}{4}$ " Cake Plate
- _____ 83. M - Imp. Floral Optic - 10 $\frac{3}{4}$ " Cake Plate
- _____ **84. Clam - Imp. FTD Lustre Rose Center Pc. Bowl -
Rd.**
- _____ 85. M - Radium Fenton Cannon Ball Pitcher
- _____ **86. P - 7 pc. Imperial Flute Berry Set - #700 - Rare
Set - Very Pretty**
- _____ **87. Teal Base - M - Overlay - Whirling Star Punch
Bowl Top - Rare**
- _____ 88. A - Spat. Ft. Peacock and Grape Ruffle Bowl - Super
- _____ 89. B - 9" 3 in 1 Fenton Vintage Bowl - Scarce
- _____ 90. Cobalt B - Horse Medallion Nut Bowl
- _____ 91. Amber - Blackberry Spray Hat - Reddish Irid.
Scarce
- _____ **92. B - 7 $\frac{3}{4}$ " Fenton Vintage Plate - A Beauty**
- _____ **93. G - N Grape & Cable Pin Tray - Rarity**
- _____ 94. M - Ruffled Fenton Holly Bowl
- _____ 95. M - 3 in 1 Fenton Holly Bowl
- _____ 96. Dk. G - Fenton Holly Bowl - Ruffle Beauty
- _____ 97. M - Fenton Vintage 8 $\frac{1}{2}$ " Bowl - Above Ave.
- _____ 98. G - Fenton Vintage 8 $\frac{3}{4}$ " Bowl - Above Ave.
- _____ 99. M - 10 Ruffle Windflower Bowl - Scarce Shape
- _____ **100. P.M. - Super N Stippled Peacocks Plate - Cinder
in Glass - Who Cares - A Beauty**
- _____ 101. W - Orange Tree Plate - Frosty Pastel
- _____ 102. M - Orange Tree Plate - Very Pretty
- _____ 103. M - I.C.S. Orange Tree Bowl - Very Pretty
- _____ 104. B - Lg. FTD Orange Tree Fruit Bowl
- _____ 105. M - Lg. FTD Orange Tree Fruit Bowl
- _____ 106. Orange Tree Powder Jar w/lid - Great Example
- _____ 107. M - Orange Tree Powder Jar w/lid - Also Great
- _____ 108. M - 7" Fish Scale and Beads Plate
- _____ 109. M - 6 Ruffle Pony Bowl - Very Popular
- _____ 110. B - I.C.S. Collar Base Dragon & Lotus Bowl -
Beauty
- _____ 111. M - N Wishbone FTD Bowl
- _____ 112. M - Fruits & Flowers Bon Bon
- _____ **113. P.M. - N Ruffled Peacocks Bowl**
- _____ **114. A - Fenton Ruffled Peacocks at Urn Bowl - Very
Scarce Color**
- _____ 115. B - Fenton Ruffled Peacock at Urn Bowl - Very
Pretty
- _____ 116. G - Fenton Spat. FTD Grape & Cable Plate
- _____ **117. M - N 8" 2 Sides Up Grape & Cable Plate**
- _____ **118. G - 9" N Spat FTD Grape & Cable Plate Plate -
Meander Bk.**
- _____ 119. M - Horse Medallion Plate - Great Detail
- _____ 120. M - N B.W. Strawberry Plate - Blues & Gr. Irid.
- _____ 121. A - N Rib Bk. Ruffled Good Luck Bowl - Scarce
- _____ 122. M - Stork and Rushes Mug - Dark
- _____ 123. B - 2 $\frac{1}{2}$ " Base Orange Tree Mug - Radium
- _____ 124. B - 3" Base Orange Tree Mug - Satin
- _____ **125. M - Fishermans Mug - Very Scarce**
- _____ 126. P - Fishermans Mug - Very Popular
- _____ **127. B - Beaded Shell Mug - Scarce Color**
- _____ 128. A - Beaded Shell Mug - Pretty
- _____ 129. G - Singing Birds Mug - Pinks & Golds
- _____ 130. M - Vintage Powder Jar w/Lid - Dark & Nice
- _____ 131. M - 6 Ruffle Kittens Bowl - Pretty Example
- _____ 132. M - 4 Ruffle Kittens Bowl - Pretty Example
- _____ **133. I.G. - N Rd. Bushel Basket - Scarce**
- _____ **134. A - 7" Diamond & Bows Vase - Scarce Color**
- _____ **135. P - N 12 $\frac{3}{4}$ " Mid Size Funeral Vase - 6" Top - 4 $\frac{5}{8}$ "
Bottom**
- _____ 136. M - Cathedral Chalice - Dark to Base
- _____ 137. A - 11" Plume Panel Vase - Very Pretty
- _____ 138. P - 9 $\frac{1}{2}$ " N Fine Rib Vase - Sharp
- _____ 139. M - 8" Imp. Parlor Panels Vase - 6 $\frac{1}{4}$ " Top
- _____ 140. Smoke - 11 $\frac{1}{2}$ " Imp. Parlor Panels Vase - Scarce
Pastel
- _____ **141. P - 17" Imp. Morning Glory Funeral Vase - 4 $\frac{7}{8}$ "
Base - 8 $\frac{1}{4}$ " Top - Stars Base**
- _____ **142. M - 18 $\frac{3}{4}$ " Imp. Morning Glory Funeral Vase -
4 $\frac{7}{8}$ " Base - 7 $\frac{3}{4}$ " Top - Stars Base**
- _____ **143. B - 19" Rustic Funeral Vase - 5 $\frac{1}{4}$ " Base - 7 $\frac{3}{4}$ " Top
- WOW!**
- _____ 144. P - N 10" Diamond Pt. Vase - Multi Irid.
- _____ 145. P - N 9 $\frac{1}{4}$ " Diamond Pt. Vase - Multi Irid.
- _____ 146. M - 8 $\frac{3}{4}$ " N Four Pillars Vase
- _____ 147. B - 15 $\frac{1}{4}$ " Fenton Thin Rib Vase - 3 $\frac{3}{4}$ " Base
- _____ 148. M - 16 $\frac{1}{2}$ " Fenton Thin Rib Vase - 3 $\frac{3}{4}$ " Base
- _____ **149. Squatty Lined Lattice Vase - 5 $\frac{1}{4}$ " Tall W.O. Ext.
Marigold Int. - 5 $\frac{1}{4}$ " Top**
- _____ 150. M - 10" Lined Lattice Vase
- _____ 151. P - 10 $\frac{3}{4}$ " Big Basket weave Vase - Multi-Elec.
- _____ **152. P.M. - 5" Woodsland Vase - Souvenir, Romeo,
Mich.**



- _____ 153. P - 11½" Target Vase - Multi Elec.
- _____ 154. G - Alaskan Irid - N 11½" Wide Panel Funeral Vase - 4¾" Base - Scarce Size
- _____ 155. P - 13" N Thin Rib Mid Size Vase - Very Pretty
- _____ 156. P.M. - Mary Vase - Radium
- _____ 157. P.O. - 5" Squatty Target Vase - 7" Top - 3/8" Base
- _____ 158. P.M. - Rare 12¼" Heisey Flute Vase - Hale Bath House Ark. Adv.
- _____ 159. G - 6½" Tornado Vase - Scarce & Pretty
- _____ 160. M - Ruffled 5½" Panther Bowl - Great
- _____ 161. M - Collar Base Ruffle Horse Medallion Bowl
- _____ 162. M - Ruffle Lions Bowl - Great Detail
- _____ 163. G - Leaf Beads N Rose Bowl - Rays Int. Radium Beauty
- _____ 164. M - 4¼" Morning Glory w/Draperly Int. - Great Miniature
- _____ 165. M - 5¼" Morning Glory w/Draperly Int. - Great
- _____ 166. M - Poinsettia Milk Pitcher - Super Example
- _____ 167. M - N 5½" Peacock at Urn Sauce - Beauty
- _____ 168. P - N 5½" Peacock at Urn Sauce
- _____ 169. M - Beaded Shell Mug - Radium
- _____ 170. M - Stippled Singing Birds Mug - Extra Nice & Scarce
- _____ 171. B - Singing Birds Mug - Elec. & Scarce
- _____ 172. P.M. - 3 in 1 Crimped N Grape Leaves Bowl - Lots of Pinks & Blues
- _____ 173. Celeste - Swan Salt - Great Find
- _____ 174. P.M. - 6½" Persian Garden Plate
- _____ 175. M - 7½" Leaf Chain Plate - Scarce Size
- _____ 176. P.O. - 6½" Four Flowers Plate - Smooth Back
- _____ 177. W - 6½" Persian Garden & Pool of Pearls Plate - Super
- _____ 178. M - 2 Sides Up O.E. Basket Adv. Miller's Furniture
- _____ 179. Powder Blue - Ruffled O.E. Basket - Scarce Color
- _____ 180. Aqua - Ruffled O.E. Basket - Scarce Color
- _____ 181. VAS. - J.I.P., O.E. Basket - Scarce Color & Shape
- _____ 182. G - Imp. Heavy Grape Punch Cup - Great Find
- _____ 183. G - N Memphis Punch Cup
- _____ 184. M - Imp. Flute Punch Cups - 2 x \$
- _____ 185. G - Imp. Flute Punch Cup - Scarce
- _____ 186. I.B. - N Grape & Cable Punch Cup
- _____ 187. A - N Ruffled Peacocks Bowl w/Rib Ext. - Multi Elec.
- _____ 188. B - N Poppy Pickle Dish - Elec. Blue & Purples
- _____ 189. M - Collar Base Ruffle Dragon & Lotus Bowl - Super
- _____ 190. P - N Ruffle B.W. Three Fruits Bowl - Multi Elec.
- _____ 191. B - Ruffled Holly Bowl - Fenton
- _____ 192. P - Grape & Cable Tumbler
- _____ 193. M - Mlbg. Hobstar & Feather Punch Bowl - Base
- _____ 194. P - Imp. Flute Toothpick Holder - Great
- _____ 195. G - Imp. Flue Toothpick Holder - Scarce
- _____ 196. M - Imp. Flute Toothpick Holder - Beauty
- _____ 197. M - Baby Thumb Print Toothpick Holder - Souvenir of Kellogg, Idaho
- _____ 198. Amber Taffy - Holly Band Toothpick Holder - Age?
- _____ 199. M - I.G. Contemporary Octagon Toothpick Holder
- _____ 200. Red - A.C.G.A. 1990 Inverted Strawberry Fairy Lamp
- _____ 201. P - Dugan Holly and Berry Nappie - Multi Elec.
- _____ 202. G - Mayan Mlbg. 8½" Low Rd. Bowl - Radium
- _____ 203. Lav. A - Mlbg. 7¼" Ruffled Blackberry Wreath Bowl - Radium
- _____ 204. B - Fenton Little Holly Goblet Compote - Great & Scarce
- _____ 205. G - Fenton Ruffle Little Holly Compote - "Tuffy"
- _____ 206. B - Fenton Holly Plate - Multi Satin
- _____ 207. M - N Grape and Cable Basket weave Plate - Nice & Dark
- _____ 208. G - Super Ruffle Collar Base Peacock and Grape Bowl
- _____ 209. Clear - 9" Frosted Block Plate - Radium Irid.
- _____ 210. Super Amberina - Fenton Holly Ruffle Bowl - Slag Effect
- _____ 211. A - N 9½" P.C.E. Wishbone B.W. Collar Base Bowl - Scarce Shape
- _____ 212. M - Imp. 7¾" Beaded Bullseye Vases - A or B - 6¼" - Super Radium
- _____ 213. G - 9½" Rustic Vase - Great Example
- _____ 214. Lav. - N Leaf Beads Rose Bowl - Plain Int. - Double Stamped N
- _____ 215. Super Pastel A.O. Plain Int. Leaf Beads Rose Bowl - Blues & Pinks
- _____ 216. G - Collar Base 3 in 1 Dragon & Lotus Bowl - Rarity in Color & Shape
- _____ 217. A - Collar Base Ruffled Dragon & Lotus Bowl - Super Example
- _____ 218. B - Collar Base Low Ruffle Dragon & Lotus Bowl - Beauty
- _____ 219. M - 10¼" FTD Stag and Holly Bowl - Lots of Pinks
- _____ 220. P - N Oriental Poppy Tankard Pitcher - Radium Beauty
- _____ 221. P - N Oriental Poppy Tumbler - Multi Elec.
- _____ 222. P - N Radium Electric Dandelion Tankard Pitcher - WOW!
- _____ 223. P - N Dandelion Tumblers - Very Nice - A, B, C, D, E, F
- _____ 224. 2 Draperly Lamp Shades - Pumpkin Moonstone - 2x\$
- _____ 225. Rare - 1st Time Offering - B - Indiana State House Plate - Super Iridescence - 1 of 2 Known
- _____ 226. P - 1973 I.C.G.A. Plate - Des Moines - 9¼"
- _____ 227. B.A. - 1972 A.C.G.A. Plate - Dayton, Ohio - 8"
- _____ 228. Amber - 1974 A.C.G.A. Plate - Indianapolis - 9½"
- _____ 229. Em. G. - 1977 A.C.G.A. Cupsidor - Cleveland - Super Pretty
- _____ 230. Saph. 1968 A.C.G.A. Dayton Mug - God and Home - Super
- _____ 231. A - Mlbg. Hobnail Vt. 15¼" Vase - 6" Top - Scarce
- _____ 232. G - Mlbg. Hobnail Vt. - 14½" Vase - 5" Top - Scarce
- _____ 233. Blue - Mlbg. Hobnail Vt. - Choice A-15¼" Vase, 5" Top or B - 16¼", 5¼" Top
- _____ 234. A - 10¼" April Showers Vase - Scarce Color
- _____ 235. G - 10½" Plume Panel Vase - Beauty
- _____ 236. A - 9½" Lined Lattice Vase
- _____ 237. P - 12¼" Imp. Beaded Bullseye Vase - Beautiful Radium
- _____ 238. B - 8½" Butterfly & Berry Vase - Very Pretty
- _____ 239. Amber - 12" Ripple Vase - Scarce Color
- _____ 240. Red - 10¼" Fenton Fine Rib Vase - Rarity
- _____ 241. Saph. - 9" Fenton Fine Rib Vase - Rare Beauty
- _____ 242. A - 9¼" Heart and Vine Plate
- _____ 243. A - 9¼" Fenton 3 Fruits Plate

**START OF DAY 2, SATURDAY
SEPTEMBER 19, 1998 - 9:00 A.M.**

244. M - 8 $\frac{3}{4}$ " Dugan Fanciful Plate - Blues & Pinks
245. G - N Strawberry w/B.W. Plate - Pretty
246. **P.O.** - **Gorgeous Honey Comb Rose Bowl - Dugan - Best I've Seen**
247. A - Mlbg. Hobnail Rose Bowl - Scarce
248. M - Mlbg. Hobnail Rose Bowl - Lots of Pink & Blues - Beauty
249. A - Mlbg. Hobnail Swirl Rose Bowl - Scarce
250. **G - Mlbg. Hobnail Spittoon - Rare Beauty - Base Rim Mold - Heat Check**
251. M - N Drapery Rose Bowl - Dark w/Pinks & Golds - Scarce
252. **B - N Drapery Rose Bowl - Blues, Greens & Golds - Scarce**
253. A.O. - N Drapery Rose Bowl - Very Pretty - Favorite
254. M - 7 Pc. Panthers Berry Set - Ruffled - Nice Match Set
255. **W - Pond Lily Bon Bon - Frosty w/Blue Hi-lites**
256. **M - Baby Thumb Print Creamer - Souvenir Jamestown, N.D.**
257. P - Mlbg. Ruffle Little Stars Bowl - Pretty Satin
258. G - 7 $\frac{1}{4}$ " I.C.S. Spat. FTD Stag and Holly Bowl - Scarce Color & Shape
259. A - Ruffle Concord Bowl - Scarce Color
260. **M - 3 in 1 Concord Bowl - Rare Shape & Pretty**
261. Clear - Brocaded Summer Garden - 8 $\frac{1}{4}$ " Ped. Compote?
262. **I.G. - Brocaded Palms Rect. Jardiner Complete - Glows - Very Rare w/ Label**
263. **Red - Ruffle Blackberry Spray Hat - 2 Sets of Berries**
264. **Teal - Louisa Mini FTD Banana Boat - 1st I've Seen - Neat**
265. M - 10" I.C.S. Two Flowers FTD Bowl - Super Blues & Pinks
266. A - Mlbg. 5 $\frac{1}{2}$ " I.C.S. Blackberry Wreath Bowl - Radium & Fabulous
267. M - 9" Cabin Scenery Center Elec. Ceiling Lamp Shade
268. **G - Ruffle Nippon B.W. Bowl - Scarce Great Color**
269. Lav. A - Slagish - Ruffled Rib Bk. Good Luck Bowl - Unusual Color
270. Olive G - P.C.E. 3 Fruits Bowl w/BW - Scarce Color
271. M - Beautiful Stippled Rib Bk. 3 Fruits Plate - Pinks & Blues
272. **B - Stippled P.C.E. Grape & Cable Bowl - Rib Ext. - Multi Elec.**
273. **M - 9 $\frac{1}{4}$ " Pedestal Rising Sun Pitcher - Radium & Scarce**
274. M - Rising Sun Tumbler - Great Example
275. **B - Grand Thistle Tumbler - Rare**
276. M - Omnibus Tumbler - Pinks & Blues - Scarce
277. **Em. G - N Peacock at Fountain Tumbler - Super & Rare**
278. **B - Lily of the Valley Tumbler - Rare and Pretty**
279. **M - N Cherry and Cable Tumbler - Dark Radium Rarity**
280. P - Dugan Cherry Wreath Tumbler - Scarce
281. **M - Buzz Saw and File Tumbler - Rare & Dark**
282. M - Hob Star and Shield Tumbler - Scarce Radium
283. B - Blueberry Tumbler - Multi Elec.
284. **P.M. - White Oak Tumbler - Another Tough One**
285. M - Super Beauty Crab Claw Tumbler
286. B - N Peacock at the Fountain Tumbler - Silvery
287. **I.B. - N Oriental Poppy Tumbler - A or B**
288. M - Dark Rich Panel Dandelion Tumbler
289. B - Dugan Wavy Line Maple Leaf Tumbler
290. A - Beauty - Beaded Shell Tumbler
291. **P - Imp. Chatelaine Tumbler - Rates High w/Collectors**
292. **Flashed M - McKee Glass Aztec Tumbler - 1 of 6 - Very Rare**
293. **G - 10" N Leaf Columns Vase - Super Pretty & Scarce**
294. **Smoke - 6 $\frac{1}{2}$ " Squatty B Leaf Columns Vase - 4 $\frac{1}{4}$ " Top - 3 $\frac{1}{2}$ " Base - Rare**
295. **Smoke - 10" N Leaf Column Vase - Very Scarce**
296. **Super M - African Shield Small Vase w/Wire Insert - Great Irid**
297. M - N Grape & Cable Powder Jar w/Lid - Very Pretty
298. G - Grape & Cable Candlesticks - Scarce - 2 x \$
299. P - Grape & Cable Candlesticks - Super - 2 x \$
300. **Beautiful - G - N Stippled Grape & Cable Vt. Plate - Greens, Pinks, Golds**
301. Scarce M - Grape & Cable Pin Tray
302. M - Grape & Cable Hat Pin Holder - Yellow, Golds & Pinks
303. G - Grape & Cable Hat Pin Holder - Scarce & Pretty
304. Little Pumpkin - M - Grape & Cable Shot Glass - Dandy
305. **P.M. - Radium Orange Tree Hat Pin Holder - Super**
306. B - Orange Tree Loving Cup - Multi Elec.
307. M - Orange Tree Loving Cup - Radium Pinks & Blues
308. P - Grape and Cable Sweetmeat w/lid - A Beauty
309. **P.M. - Grape & Cable Perfume - Radium Pinks & Golds - Rare**
310. **P - Grape & Cable Perfume - Radium Elec. - Rare**
311. **B - Kittens Toothpick or Vase - Great Example**
312. **B - Kittens 6 Ruffle Bowl - Scarce**
313. **Powder Blue - 4 $\frac{5}{8}$ " Kittens Plate - 2 Sides Up - Super & Rare - Pinks, Blues & Golds**
314. M - Kittens 6 Ruffle Bowl - Pretty One
315. M - Kittens Cup & Saucer - Neat Set
316. B - 9" Orange Tree Plate w/Trunk - Scarce w/Trunk
317. **W - 8 $\frac{7}{8}$ " Round Up Plate - Pinks, Greens & Blues - Great**
318. **Pastel A.O. - Peacocks Ruffle Bowl - Rib Back - Super Beauty**
319. **Pumpkin - M - P.C.E. Peacocks Bowl - Rib Bk. - Super**
320. A - Peacocks Ruffled Bowl - Rib Bk. - Blues & Purples
321. P.M. - Peacocks Plate, Rib Bk. - Blues, Yellows & Pinks
322. **W - Peacocks Plate - Rib Bk. - Frosty Golds & Purples**
323. **Lime I.G. - Peacocks Plate - Rib. Bk. - Blues, Golds & Purples**
324. G - Mlbg. 9 $\frac{3}{4}$ " I.C.S. Hanging Cherries Bowl
325. **G - Mlbg. Hanging Cherries Cream Pitcher**
326. **G - 6 $\frac{7}{8}$ " Mlbg. Rare Hanging Cherries Milk Pitcher - Few Known**



- _____ 327. A - Mlbg. Ruffle 5 Star Many Stars Bowl - Radium Rarity
- _____ 328. A - Mlbg. 3 in 1 Ruffle 6 Star Many Stars Bowl - Radium
- _____ 329. Blue - 6 Ruffle Mlbg. 10¹/₄" Blackberry Wreath Bowl - Rare Pretty Satin
- _____ 330. B - I.C.S. Lotus & Grape Bowl - Rare Shape - Very Pretty
- _____ 331. P.M. - Smooth Bk. N Ruffle 3 Fruits Bowl - Super Yellow, Greens & Pinks
- _____ 332. G - Imp. Flue Toothpick Holder - Very Scarce
- _____ 333. 5³/₄" Tall M-Atomizer Perfume - Neat Item
- _____ 334. B - Blackberry Block Tankard Pitcher - Super Find
- _____ 335. B - Blackberry Block Tumblers - Choice A, B, C, D, E, F
- _____ 336. M - Orange Tree Orchard Pitcher - Super Example - Dark Top to Bottom
- _____ 337. P - Grape Arbor Tankard - Gorgeous Radium Pitcher
- _____ 338. P - Grape Arber Tumblers - Choice A, B, C, D, E, F
- _____ 339. B - 9¹/₄" Persian Medallion Plate - Scarce Color
- _____ 340. P - Single - Beautiful Grape & Cable Candlestick
- _____ 341. B - 10 Mums Tankard & 6 Tumblers - Rare Beautiful Set - Belongs Together
- _____ 342. P - 13¹/₄" Tree Trunk Vase w/Plunger Base - Rare Mid Size
- _____ 343. B - 10¹/₂" Ruffle Stag and Holly Ball FTD Bowl - Multi Elec. - Hot Item
- _____ 344. True Lav. Ice - 6¹/₂" Cherrie Chain Plate - Super Beautiful - Pastel Rarity
- _____ 345. P.M. - Magnificent Ruffle Rose Show Bowl - Pinks, Blues and Yellows
- _____ 346. P - Stippled 3 Fruits Rib Bk. Plate - Golds, Purples & Blues
- _____ 347. P.M. - Great Collar Base Peacock and Grape Plate - Pinks & Yellows
- _____ 348. M - Spat FTD Dark Peacock and Grape Plate - Pinks & Blues
- _____ 349. G - Spat FTD Scarce Nice Peacock and Grape Plate
- _____ 350. M - 8 Ruffle Square Shape - Coral Bowl - Scarce Beauty
- _____ 351. Moonstone - 8³/₄" Ruffle Carolina Dogwood Bowl - Under Rated
- _____ 352. MMG - 9" Ruffle Carolina Dogwood Bowl - Very Pretty Item
- _____ 353. B.A. - Australian 5¹/₂" 12 Ruffle Swan Bowl
- _____ 354. B.A. - Australian 9¹/₂" 16 Ruffle Swan Bowl
- _____ 355. B.A. - Australian 9³/₄" 16 Ruffle Kangaroo Bowl - Rare - Super
- _____ 356. B.A. - Australian 5¹/₂" 12 Ruffle Kangaroo Bowl - Rare - Super
- _____ 357. B.A. - Australian Emu Compote - Very Pretty
- _____ 358. M - Australian 10" 8 Ruffle Magpie - Radium
- _____ 359. B - 8" Round Deep Scalloped Slewled Horse Shoe Bowl - Rare
- _____ 360. Em. G - Ruffle 9³/₄" Collar Base N Wishbone Bowl - B.W. - Super
- _____ 361. B.A. - Australian Piping Shrike - 9¹/₂" 12 Ruffle - Radium Elec.
- _____ 362. 4³/₄" Golden Thistle Miniature Plate - Rare Item
- _____ 363. M - 9³/₄" Fish Vase - Just Beautiful
- _____ 364. M - 7¹/₂" Rare Czecko. Goddess Vase - Extremely Rare
- _____ 365. M - 8³/₄" Hand Vase with Lots of Pinks & Blues
- _____ 366. M - 5¹/₄" Hand Vase - Just A Great Little Vase
- _____ 367. M - 6⁵/₈" Radium Rare Elephant Vase - Signed JAIN
- _____ 368. Frosted 6¹/₂" Misty Morn Vase - Floral - Rare Beauty
- _____ 369. M - 49^{ers} Cordial Decanter & 6 Cordial Stem Glasses - Rare Set
- _____ 370. Super 10¹/₂" P.M. Acanthus Plate - Multi Beauty
- _____ 371. Pinks Golds & Blues, M - N 3 Fruits B.W. Plate - Great One
- _____ 372. P - Sq. Butterfly & Tulip Bowl - Beautiful - Popular Item
- _____ 373. G - Rare - Hearts and Flowers Compote - Super Pinks & Golds w/Blue Hi-lites
- _____ 374. A - 11" Star Base Four Pillars Vase - Scarce Color
- _____ 375. P - Scarce 8" Lattice and Points Vase w/Daisy in Base
- _____ 376. W - 10¹/₂" Big Basket weave Vase - Multi Pinks & Blues
- _____ 377. P - N 10¹/₄" Peacock and Urn Master Ice Cream Bowl
- _____ 378. M - Banded Rib Tumbler - Lots of Pinks
- _____ 379. A.O. - Opal Tips Hearts & Flowers - Truly Gorgeous Pastel Bowl
- _____ 380. B - Ruffle Hearts & Flowers Bowl - Very Scarce Color
- _____ 381. I.B. - Ruffle Hearts & Flowers Bowl - Loaded w/Blues & Pinks
- _____ 382. Lime I.G. - Ruffle Hearts & Flowers Bowl - Scarce Color
- _____ 383. M - Daisy & Drape Vase - Pumpkin w/Pinks & Blues
- _____ 384. A - Mary Ann Vase - Radium Blues & Purples - Great
- _____ 385. Amber - Loganberry Vase - Super w/Blues, Purples & Golds - WOW!
- _____ 386. 15¹/₄" M - Ripple Funeral Vase - 4³/₄" Base - 8¹/₂" Fan-like Top - Super
- _____ 387. M - Poppy Show Vase - Dark w/Pinks and Blues
- _____ 388. P - 12¹/₂" Morning Glory Funeral Vase - 10" Top - 5" Stared Base - Multi Elec.
- _____ 389. I.B. - P.C.E. Rib Bk. Nippon Bowl - Beautiful Example
- _____ 390. Super G - Rare - Drapery Tri-Corner Candy Dish
- _____ 391. B - Poppy Show Plate - Super Multi Elec. Irid.
- _____ 392. M - Rose Show Plate - Beautiful Find
- _____ 393. Super G - 11¹/₂" Imperial Heavy Grape Chop Plate - Radium Blue, Pink & Golds - Rare
- _____ 394. M - Rococo Vase - Very Fine Example
- _____ 395. W - Low 10 Ruffle 9¹/₂" Apple Blossom Twigs Plate - Super Pinks & Blues
- _____ 396. P - Westmoreland Ruffle Smooth Rays Compote - Super Elec. Radium - Show Stopper
- _____ 397. A.O. - Pastel 3 Fruits Medallion Stippled FTD Bowl - 2¹/₂" of Opal
- _____ 398. W - Very Scarce 3 Fruits Medallion Stippled FTD Bowl - Frosty - Few Sold
- _____ 399. P - Spat. FTD 3 Fruits Medallion - Elec. Bluish Irid. - WOW!
- _____ 400. A.O. - Collar Base Stippled Three Fruits Bowl - Great Find
- _____ 401. M - 6¹/₂" Persian Garden Plate - Very Pretty
- _____ 402. G - 6¹/₄" Mlbg. Cosmos Plate - Radium Blues, Pink & Golds
- _____ 403. M - Screaming Radium N Strawberry Plate - B.W. Ext. - WOW!

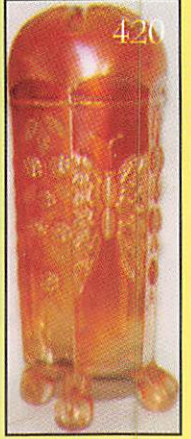
- _____ 404. P.M. - N 3 Fruits B.W. Plate - Yellows, Greens & Golds
- _____ 405. I.B. - Ruffled Smooth Bk. Embroidered Mums Bowl - Very Scarce
- _____ 406. M - N Harvest Poppy Compote - Pinks & Golds
- _____ 407. Smokey White Looking N Beaded Cable Rose Bowl - Unusual Pastel Color
- _____ 408. Great M-Ruffled Concord Bowl - A Beauty
- _____ 409. Rich G - Ruffled Concord Bowl - Scarce Hot Item
- _____ 410. **Rare 3 in 1 P - Farm Yard Bowl - Great Shape & Pattern**
- _____ 411. W - N Collar Base Rib Bk. Stippled 3 Fruits Bowl - Frosty - Very Scarce
- _____ 412. P - P.C.E. Good Luck Bowl - Elec. Multi Blue & Purples
- _____ 413. B - Ruffle Good Luck Bowl - Rib Dk. - Elec. Bl. & Purples
- _____ 414. Saph. - Ruffle Rib Bk. Good Luck Bowl - Rare - Beauty
- _____ 415. Teal Greenish - Ruffle Rib Bk. Good Luck Bowl - Glows Black Lite
- _____ 416. Em. G - Ruffle Good Luck Bowl w/B.W. - Super
- _____ 417. Horehound - Good Luck B.W. Plate - Purple & Gold Irid.
- _____ 418. P - N Rib Back Stippled Strawberry Plate - Best I've Seen
- _____ 419. P.M. - Radium Flat 9" Spat. FTD Stag & Holly Plate - Very Scarce
- _____ 420. M - Butterfly and Berry Rare Hat Pin Holder
- _____ 421. I.B. - N Rib Bk. Peacocks Plate - Lot of Blue & Pink Hi-lites - Great Find
- _____ 422. Lav. A - 6 $\frac{1}{8}$ " Fern Brand Choc. 2 Sides Up Plate - This One's Pretty
- _____ 423. A - ISAAC BENESCH & SONS Ruffle Bowl - 1 of the Best
- _____ 424. A - 6 $\frac{1}{2}$ " Eat Paradise Sodas Plate - Super Blue, Pinks & Golds
- _____ 425. M - 9" Spector's Department Store Plate - Great Example
- _____ 426. M - Scarce Radium, 10 Ruffle, Brooklyn Bridge Bowl
- _____ 427. Radium A - Millersburg Courthouse Ruffle Bowl - Beauty
- _____ 428. M - Fenton Peacock at Urn Plate - Super Greens, Pinks & Golds
- _____ 429. G - 9" Grape & Cable BW Plate - Super G, Yellow & Pink Irid.
- _____ 430. M - Formal J.I.P. Vase - 7 $\frac{1}{2}$ " - Scarce Beauty
- _____ 431. Super A - Water Lily & Cattails Banana Bowl
- _____ 432. Super G - 10" Ruffled Ball FTD Dragon & Strawberry Bowl - Rare
- _____ 433. Aqua - 3 in 1 Edge - Rare - Beautiful Fenton Holly Bowl
- _____ 434. Rare - Red - 6 $\frac{1}{2}$ " I.C.S. Peacock Tail Bowl - Super Blues, Reds & Golds
- _____ 435. Rev. Amberina Opal - Blackberry Spray Ruffle Hat - Rare Beauty
- _____ 436. Red - Ruffle Fenton Holly Bowl - Scarce
- _____ 437. Red - Great Holly Ruffle Hat - Very Pretty
- _____ 438. Red - Pair Double Scroll Candlesticks
- _____ 439. Great Rev. Amberina Blackberry Spray Ruffle Hat
- _____ 440. Super-Super Red - 6" Rose and Fishnet Vase - Red & Blue Irid. - Best Yet
- _____ 441. Red - 6" Primrose and Fishnet Vase - Above Ave.
- _____ 442. Red - 6" Primrose and Fishnet Vase - Not Irid.
- _____ 443. M - 5" Rare Whimsey File Vase - Very Pretty
- _____ 444. B - 6 $\frac{1}{2}$ ", 3 $\frac{1}{4}$ " Turned in Top Floral & Sunburst Vase - May be 1 of a kind - Beautiful Radium
- _____ 445. Rare - Blue Greek Key Ruffled Bowl - Few Ever Offered
- _____ 446. P.M. - Ruffle Rose Show Vt. Bowl - Beautiful Pinks & Golds
- _____ 447. G - Mlbg. I.C.S. 9 $\frac{3}{8}$ " Nesting Swan - Very, Very Rare Shape
- _____ 448. G - Mlbg. I.C.S. Trout & Fly Bowl - A Beauty
- _____ 449. A - Mlbg. Super Ruffled Radium Strawberry Wreath Compote - Stunning
- _____ 450. Gorgeous Mlbg. Olive Radium Nite Stars Bon Bon - Rare
- _____ 451. More - Rare I.G. - Super 10" Ruffled Fruits & Flowers Bowl - B.W.
- _____ 452. A.O. - N Poppy Pickle Dish - Pastel - Purple, Pink & Gold Irid.
- _____ 453. Violet - N Poppy Pickle Dish - What A Base Color
- _____ 454. Teal G - N Poppy Pickle Dish - Glows Under Black Lite - WOW!
- _____ 455. Multi Elec B - Poppy Pickle Dish - Just A Dandy
- _____ 456. Lime Vas. - C.R.E. Top Stemmed Daisy Squares Rose Bowl - M - Overly Top - Rare Color
- _____ 457. P.M. - Tri-Corner C.R.E. Top Stemmed Daisy Squares Rose Bowl - Rare Shape
- _____ 458. P - 10" Four Flowers Banana Shape Whimsey Plate - From Chop Plate
- _____ 459. B - 7 $\frac{1}{4}$ " Pine Cone 12 Side Plate - Beautiful Plate
- _____ 460. Saph - N Florentine 8 $\frac{1}{2}$ " Candlesticks
- _____ 461. (5) Cases of Buttons Displayed - 35 per Case - Choice Case
- _____ 462. 1 Case of Buttons Framed w/23 Buttons - 1 Piece
- _____ 463. Red - Robin Mug A.C.G.A. 1967
- _____ 464. B - A.C.G.A. Bell - Dayton - 1975
- _____ 465. Amberina 3 $\frac{1}{4}$ " A.C.A. Cup Plate - 1974 - Treas.
- _____ 466. P - Gorgeous Rambler Rose Water Pitcher - Contemporary
- _____ 467. Indigo B - 5 $\frac{1}{4}$ " Contemporary Plate - Paneled Grape
- _____ 468. Red - Contemporary Crider? Toothpicker
- _____ 469. Black - Contemporary 9 $\frac{1}{2}$ " FTD Stag and Holly Bowl
- _____ 470. Edwards Book - 4th Printing
- _____ 471. Edwards Book - 3rd Edition
- _____ 472. G - Imp. Octagon Wine - Rare Color
- _____ 473. M - Rising Sun Juice Glass - Cracked
- _____ 474. B - Tiger Lily Tumbler - Beauty - Ground Top

Lot 500 - FUN AUCTION AT THE END! Club Pieces and Contemporary Collection - Approx, 60 pcs. - Beautiful Colorful Impressive Carnival Glass. Examples: Crackle Bowl w/Home Tea Co.; White Robin I.G. 7 pc. Water Set; A.O. Hobnail 1980 L.L.C.G.C. Bell; M-SACIC Ashtray; B-1972 Apache Scout Plate; M-St. Matthew Bottle; Smoke Loganberry Vase; PLUS MORE.

* * * CALL FOR LIST * * *

If you haven't been to Boonville, MO and attended a Mickey Reichel Auction, I'm extending a special invitation to one of our very best yet.

Thank You, Mickey



MICKEY REICHEL ANTIQUE & AUCTION,

516 THIRD STREET
BOONVILLE, MO 65233-1536



FIRST CLASS MAIL



SPECIAL INVITATION TO:

