

Outstanding Carnival Glass

AUCTION

*Friday, September 11, 1998
6:00 P.M. (Lots 1-216)*

*Saturday, September 12, 1998
9:30 A.M. (Lots 217-530)*

Collection of
Donald Kime and
Roland Kuhn



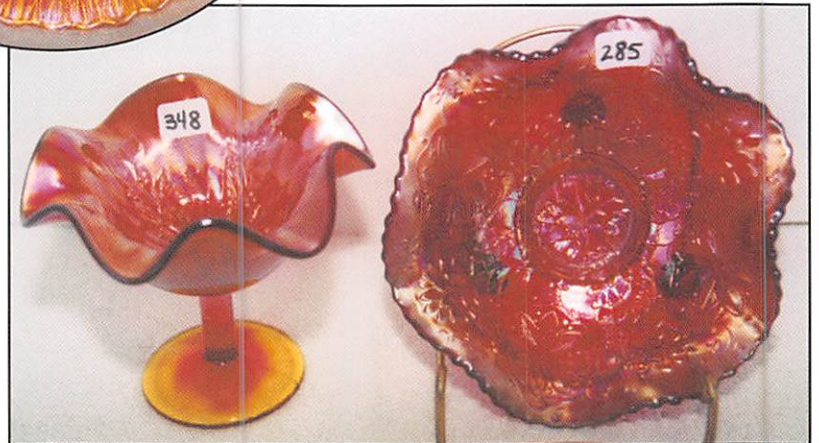
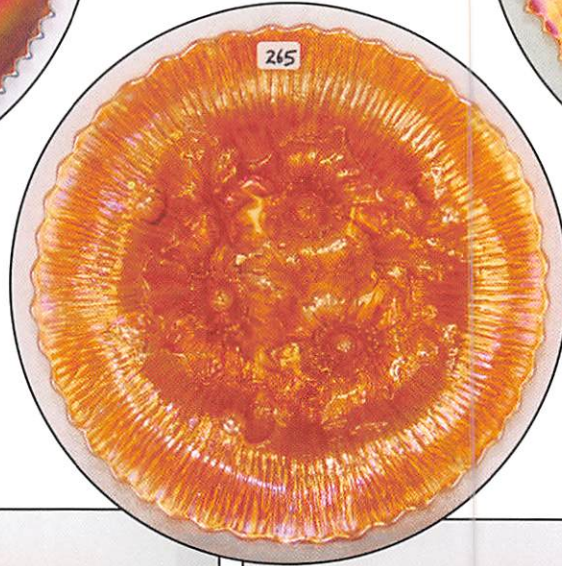
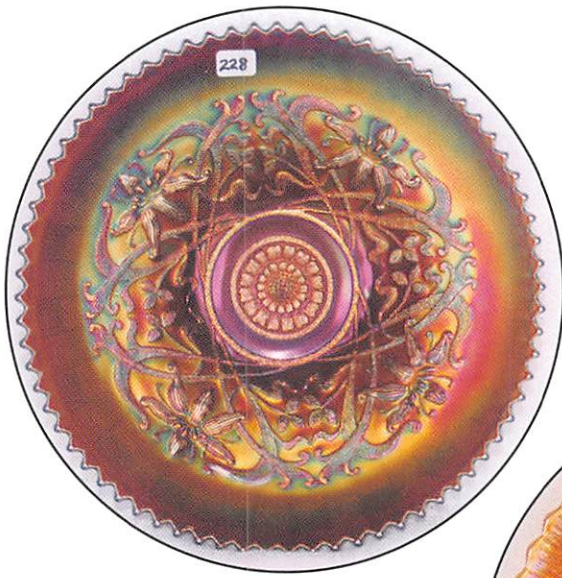
515-424-1116
JIM and JAN SEECK

Seeck Auctions

Holiday Inn-Wentzville
900 Corporate Parkway
Wentzville, MO
(Exit 212a off of I-70)

Call (314) 327-7001 for reservations

Seeck Auctions



FRIDAY, SEPTEMBER 11, 1998 -- 6:00 p.m (Lots 1 - 216)
SATURDAY, SEPTEMBER 12, 1998 -- 9:30 am (Lots 217 - 530)
Holiday Inn -- Wentzville, MO

Seek Auctions is pleased to bring you the outstanding Carnival Glass collection of Don Kime and the late Roland Kuhn of Kansas, known for one of the finest Wishbone collections in the country. This collection is filled with marvalous pieces of Wishbone and many other fine pieces of glass. Ron was very active in the Air Capital Carnival Glass Club giving precious time to his love, Carnival Glass. Don has been President of the club for many years, always on top of things to make sure the club and convention ran smooth. Together they assembled a fantastic array of glass! This will be two outstanding days of Carnival Glass at auction. You will not want to miss it!

PREVIEW: Friday, September 11th, 3:00 P.M. **NO BUYER'S PREMIUM.**
RESERVATIONS: Call (314) 327-7001 (Please ask for the Seek Auction block of rooms)

WRITE-IN BID POLICY

1. Write-in bids will be accepted by sending the numbers of the item(s) desired and the amount bid on each to:
Seek Auctions, PO Box 377, Mason City, Iowa 50402.
2. If known by Auction Company, bids may be done over the telephone. (515)424-1116.
3. There is a \$5 handling charge for each successful bid. Shipping and insurance charges are additional.
4. Bidders will be notified by phone if their bid(s) are successful. This call will be made 1 - 3 days after the auction.
5. Please have all bids in by Wed., Sept. 9th. All bids (by mail, phone or **email**) after this date may not be carried out.
6. Please place bids in the following increments: \$1 to \$300 - \$5 increments \$300 up - \$25 increments.
7. **If you do not receive an item that sold for less than your bid, assume we cancelled your bid because the piece of glass had below average color, manufacture problem, damage or was not listed correctly.**
8. To receive price lists send: \$20 -- for this auction and next 7 auctions
\$5 -- for only this auction or individual auction (please specify)

Send to the above address. (please allow 2 - 3 weeks delivery for price lists)(**Make checks payable to: Jan Seek**)

You may now email us with your write-in bids! Our email address is: seekauction@willowtree.com
Continue to include the numbers of the item(s) you would like to bid on and amount bid on each, please include your telephone number. ALSO visit us at our website: <http://www.willowtree.com/~seekauction>
***** Email Bids must be in by Wednesday, September 9th *****

Friday, September 11th -- 6:00 p.m.

- | | |
|--|---|
| <p>___ 1. Butterflies card tray shaped bon bon - blue
___ 2. Butterflies card tray shaped bon bon - amethyst
 - Horlacker adv. on base
___ 3. Octagon wine glass - marigold
___ 4. Kings Crown wine glass - marigold
___ 5. Colonial wine glass - marigold
___ 6. Hobstar Band hdld celery vase - marigold
___ 7. Diamond & Column 12" vases (2) - marigold -
 choice
___ 8. Wreath of Roses ruffled compote - amethyst -
 choice
___ 9. Wreath of Roses ruffled compote - green
___ 10. Concord 3 in 1 edge bowl - amethyst - has
 super red, yellow, & lavender irid. fantastic
 & rare
___ 11. Holly square shaped hat shape - marigold
___ 12. Brocaded Acorns card tray shaped bon bon - ice
 blue
___ 13. Persian Medallion CRE ruffled compote -
 marigold - nice</p> | <p>___ 14. Little Flowers deep round master berry bowl -
 amethyst
___ 15. E. A. Hudson Furniture Co. adv. ruffled bowl
 - amethyst - very rare bowl, nice
___ 16. Iris buttermilk goblet - green
___ 17. Iris buttermilk goblet - amethyst
___ 18. Iris buttermilk goblet - marigold
___ 19. M'burg Multi Fruits & Flowers punch bowl base -
 blue - very rare if you need it
___ 20. M'burg Multi Fruits & Flowers punch bowl base -
 amethyst - ditto
___ 21. Heavy Grape 8" plate - purple - super
___ 22. Heavy Grape 8" plate - green
___ 23. Two Flowers large IC shaped ftd bowl - blue -
 burst on base
___ 24. Two Flowers large IC shaped ftd bowl - marigold
 - sharp point
___ 25. Fluffy Peacock water pitcher - amethyst -
 super pretty & very rare
___ 26. Fluffy Peacock tumbler - amethyst - matches
 pitcher
___ 27. Inverted Strawberry 7" round bowl - green</p> |
|--|---|

- ___ 28. Persian Medallion small size ruffled compote - amethyst - scarce
- ___ 29. Wild Blackberry ruffled bowl - green - nice
- ___ 30. Petals ruffled compote - marigold - super
- ___ 31. Sailboats wine - blue - scarce
- ___ 32. Sailboats wine - marigold
- ___ 33. Question Mark ftd CRE plate - peach opal - scarce shape
- ___ 34. **Fenton's Flowers rosebowl - white - frosty & nice, very scarce color**
- ___ 35. **Fenton's Flowers rosebowl - green - very pretty, has one buffed toe**
- ___ 36. Fenton's Flowers rosebowl - marigold - dark & nice
- ___ 37. Fenton's Flowers rosebowl - clambroth - very unusual look
- ___ 38. Wreathed Cherry banana boat shaped master berry bowl - amethyst
- ___ 39. Wreathed Cherry banana boat shaped sauce - amethyst
- ___ 40. **Banded & Stippled Grape & Cable banana boat - aqua - super pretty irid. on this extremely rare color, super**
- ___ 41. **Banded & Stippled Grape & Cable banana boat - pastel smokey lime green - weird color, but very pretty, has crack in foot**
- ___ 42. Banded & Stippled Grape & Cable banana boat - marigold - dark & nice
- ___ 43. Pansy ruffled bowl - purple - super
- ___ 44. Pansy ruffled bowl - marigold - pretty
- ___ 45. Pansy ruffled bowl - green
- ___ 46. Imperial Grape water goblet - purple - inside goblet is fantastic
- ___ 47. Imperial Grape water goblet - amber
- ___ 48. Imperial Grape water goblet - smoke
- ___ 49. Star Medallion compote - marigold
- ___ 50. **Wishbone ftd ruffled bowl - aqua opal - ultra rare & extremely desirable, very pretty, once in a lifetime opportunity to buy a top piece in carnival glass**
- ___ 51. **Wishbone ftd ruffled bowl - ice green - very rare & desirable, nice**
- ___ 52. Wishbone ftd ruffled bowl - green
- ___ 53. Wishbone ftd ruffled bowl - pastel marigold - super
- ___ 54. Scroll Embossed ruffled compote - marigold
- ___ 55. Imperial Grape wine - lime green - scarce color
- ___ 56. Imperial Grape wine - purple
- ___ 57. Imperial Grape wine - green
- ___ 58. Imperial Grape wine - marigold
- ___ 59. **Grape & Cable cvd cracker jar - purple - very pretty, scarce**
- ___ 60. Birds & Cherries bon bon - green
- ___ 61. Birds & Cherries bon bon - blue
- ___ 62. Birds & Cherries bon bon - marigold - nice
- ___ 63. **Acorn Burrs master berry bowl - purple - scarce**
- ___ 64. Acorn Burrs berry dishes (2) - purple - choice
- ___ 65. Acorn Burrs berry dishes (3) - green - choice
- ___ 66. Acorn Burrs berry dish - blue opal - not carnival
- ___ 67. **Petal & Fan large ruffled bowl - purple - super irid., as pretty as they get**
- ___ 68. Orange Tree ftd master berry bowl - marigold - chip on foot
- ___ 69. **Sailboats water goblet - amethyst - very rare color, very nice**
- ___ 70. **Sailboats water goblet - green - also very rare color, nice**
- ___ 71. Sailboats water goblet - marigold
- ___ 72. Double Dutch ftd round bowl - purple - super pretty
- ___ 73. Double Dutch ftd round bowl - marigold
- ___ 74. Hobstar Flower ruffled compote - lavender - odd color
- ___ 75. Hobstar Flower ruffled compote - green
- ___ 76. Chrysanthemum ruffled bowl - marigold - nice
- ___ 77. **Prayer Rug bon bon - marigold on custard - very rare & desirable**
- ___ 78. Leaf Chain ruffled bowl - blue - pretty
- ___ 79. Leaf Chain ruffled bowl - clambroth - also nice
- ___ 80. **Vintage small size epergne - green - very nice, scarce**
- ___ 81. Puzzle round bon bon - amethyst - nice
- ___ 82. Puzzle round bon bon - peach opal
- ___ 83. Persian Medallion hair reciever - marigold
- ___ 84. Raspberry milk pitcher - marigold - minor nick on base
- ___ 85. Scroll Embossed 4" miniature bowl - marigold - very scarce little item
- ___ 86. **Horse Medallion JIP shaped ftd bowl - lime green - very scarce color**
- ___ 87. Horse Medallion JIP shaped ftd bowls (2) - marigold - choice
- ___ 88. Octagon water pitcher - marigold - small size
- ___ 89. Octagon tumbler - marigold
- ___ 90. **Grape & Cable 4 pc. table set - green - super pretty set that matches, scarce**
- ___ 91. Vintage fernery - blue
- ___ 92. Vintage fernery - marigold
- ___ 93. Butterfly & Berry 7 pc. berry set - marigold - nice
- ___ 94. Singing Birds mug - amethyst
- ___ 95. Beaded Cable rosebowl - marigold - super pretty
- ___ 96. Beaded Cable rosebowl - custard - not carnival
- ___ 97. Panther ruffled sauces (6) - marigold - choice
- ___ 98. Panther round sauce - marigold
- ___ 99. Fanciful IC shaped bowl - white - minor nicks on base
- ___ 100. Footed Hobstar Band 7pc. water set - marigold - nice
- ___ 101. Little Flowers 10" ruffled bowl - blue - pretty
- ___ 102. Little Flowers 10" ruffled bowl - marigold
- ___ 103. Dragon & Lotus ruffled bowl - green - super
- ___ 104. Dragon & Lotus ruffled bowl - marigold - nice
- ___ 105. Question Mark bon bon - amethyst - nice
- ___ 106. Question Mark bon bon - white - pretty
- ___ 107. Question Mark bon bon - marigold
- ___ 108. **Diamond Lace water pitcher - marigold - super pretty, scarce**
- ___ 109. Diamond Lace tumbler - purple
- ___ 110. Vintage 9" ruffled bowl - odd blue - has red in it when you hold it to light
- ___ 111. Vintage 9" ruffled bowl - amethyst
- ___ 112. **Concord 9" plate - amethyst - a super rare plate that is in high demand**
- ___ 113. Little Flowers square shaped sauce - marigold -

- pretty
- ___ 114. M'burg Zig Zag ruffled bowl - green - radium, has chip on base
- ___ 115. Brooklyn Bridge ruffled bowl - marigold - scarce
- ___ 116. Diamond & Sunburst wine - lavender - scarce color
- ___ 117. Diamond & Sunburst wine - purple
- ___ 118. Diamond & Sunburst wine - marigold
- ___ 119. Lion's ruffled bowl - blue - scarce item
- ___ 120. Lion's ruffled bowl - marigold - nice
- ___ 121. Peacock at the Fountain 4 pc. table set - purple - a super pretty set, very scarce
- ___ 122. Grape & Cable bon bon - green
- ___ 123. Grape & Cable bon bons (2) - marigold - choice
- ___ 124. Grape & Cable whiskey decanter - purple - minor spots around stopper hole, very rare, nice
- ___ 125. Moonprint creamer & open sugar - marigold - nice
- ___ 126. Grape & Cable water pitcher - purple - scarce
- ___ 127. Grape & Cable tumbler - purple
- ___ 128. Grape & Cable water pitcher - marigold - super nice example
- ___ 129. Grape & Cable tankard tumbler - marigold - nice
- ___ 130. Fenton's Peacock at Urn ruffled bowls (2) - blue - scarce, choice
- ___ 131. Leaf Rays ruffled nappy - purple - nice
- ___ 132. M'burg Big Fish IC shaped bowl - amethyst - satin & nice, a very rare bowl in this shape
- ___ 133. Stork & Rushes mug - marigold
- ___ 134. Butterfly & Berry ftd ruffled bowl shaped whimsy - green - made from the fernery, very rare, the feet do not touch the table, it sets on its base!
- ___ 135. Persian Medallion bon bon - amberina - super neat piece, rare
- ___ 136. Persian Medallion bon bon - green
- ___ 137. Persian Medallion bon bon - marigold
- ___ 138. Orange Tree 6 pc. punch set - blue - very nice set, scarce
- ___ 139. Honeycomb rosebowl - peach opal - nice
- ___ 140. Good Luck ruffled bowl w/ribbed back - lavender - super pretty example, as nice as they get
- ___ 141. Waterlily ftd IC shaped bowl - marigold
- ___ 142. Raspberry ftd ruffled compote - purple - has Daisy & Plume back pattern
- ___ 143. Iris ruffled compote - blue - scarce color
- ___ 144. Iris ruffled compote - green
- ___ 145. Ten Mums 3 in 1 edge bowl - green - very pretty, a popular pattern
- ___ 146. M'burg Holly Sprig card tray shaped bon bon - marigold - radium & super
- ___ 147. M'burg Holly Sprig card tray shaped bon bon - green - satin
- ___ 148. Tulip & Cane water goblet - marigold
- ___ 149. Four Seventy Four water goblet - marigold
- ___ 150. Octagon water goblet - marigold
- ___ 151. Star Medallion water goblet - marigold
- ___ 152. Wishbone ftd tri-cornered bowl - green - very rare & desirable especially in this color, minor pinpoint on one point
- ___ 153. Wishbone ftd tri-cornered bowl - amethyst - super pretty & very rare, neat
- ___ 154. Wishbone ftd tri-cornered bowl - marigold - also very rare & nice
- ___ 155. Illusion bon bon - blue
- ___ 156. Illusion bon bon - marigold
- ___ 157. Grape & Cable sweetmeat - purple - always in demand
- ___ 158. Kittens ruffled bowl - amethyst - very scarce color, nice
- ___ 159. Kittens ruffled bowls (2) - marigold - choice
- ___ 160. Kittens 4 ruffled bowl - marigold
- ___ 161. Kittens card tray shaped bowl - marigold
- ___ 162. Kittens toothpick - marigold
- ___ 163. Kittens cup & saucer - marigold
- ___ 164. Butterfly & Berry master berry bowl - blue - nice
- ___ 165. Butterfly & Berry master berry bowl - marigold - nice
- ___ 166. Circle Scroll JIP shaped hat shape - purple - very nice & very scarce
- ___ 167. Basketweave Open Edge JIP shaped hat shape - red - very scarce & desirable
- ___ 168. Basketweave Open Edge JIP shaped hat shape - marigold
- ___ 169. Butterfly & Berry ftd sauce - amethyst - scarce color
- ___ 170. Grape & Cable hatpin holder - ice blue - super pretty & very rare, small chip on bottom of one foot
- ___ 171. Grape & Cable hatpin holder - green - very nice, highly desirable
- ___ 172. Grape & Cable hatpin holder - purple - very nice, in high demand
- ___ 173. Grape & Cable hatpin holder - marigold - nice
- ___ 174. Imperial Grape 5 pc. berry set - marigold - berries have handles
- ___ 175. N's Butterfly bon bons (2) - green - choice
- ___ 176. N's Butterfly bon bon - purple - nice
- ___ 177. N's Butterfly bon bon - marigold
- ___ 178. M'burg Hanging Cherries 10" IC shaped bowl - amethyst - satin & scarce
- ___ 179. Butterfly & Berry tumblers (4) - blue - choice
- ___ 180. Daisy & Drape vase - aqua opal - super butterscotch example
- ___ 181. Cherry Circles ruffled bon bon - marigold - nice
- ___ 182. Persian Medallion round sauce - amethyst
- ___ 183. Daisy Block row boat - marigold - nice example
- ___ 184. Wild Rose open edge ftd bowl - purple
- ___ 185. Hearts & Flowers ruffled compote - white - very desirable pattern, nice
- ___ 186. Pony ruffled bowl - amethyst - very good example
- ___ 187. Pony ruffled bowls (2) - marigold - choice
- ___ 188. Thistle ruffled bowl - marigold
- ___ 189. Grape & Cable ruffled hat shape - amethyst - made from tumbler
- ___ 190. Raspberry water pitcher - white - super rare pitcher, has great irid. & is frosty

- ___ 191. Grape & Cable pin dish - marigold - made from punch cup
- ___ 192. Birds & Cherries ruffled compote - green - nice
- ___ 193. Stag & Holly large ftd ruffled bowl - marigold - very pretty
- ___ 194. Vintage card tray shaped bon bon - blue
- ___ 195. Little Flowers 6" plate - marigold - pretty
- ___ 196. M'burg Cosmos 6" round sauce - green - radium
- ___ 197. Grape & Cable card tray shaped dish - amethyst - scarce
- ___ 198. Plaid ruffled bowl - marigold - very nice, scarce
- ___ 199. Fenton's Grape & Cable 7" ruffled bowl - marigold
- ___ 200. **Peacock & Grape 9" plate - marigold - absolutely super, dark & pretty, WOW!**
- ___ 201. Ruffled compote - marigold
- ___ 202. Chariot compote - marigold
- ___ 203. Star & File champagne - marigold
- ___ 204. Buttermilk goblets (4) - lime green, amethyst, green, marigold - choice
- ___ 205. Coindot ruffled bowl - marigold
- ___ 206. Interior Panels large wine - marigold
Interior Panels large wine - marigold
Plain wine - marigold
Small Plain shot glass - marigold
Golden Grapes wine - marigold
All Sold Choice
- ___ 207. Rainbow compote - green
- ___ 208. Engraved Flower juice glasses (5) - marigold
- ___ 209. Marathon Oil Co. Pig bank - marigold
- ___ 210. Miniature Basketweave hdd bskt - marigold
- ___ 211. Scotty Dog cvd box - marigold
- ___ 212. Wreathed Cherry banana boat shaped sauce - marigold
- ___ 213. Vintage Banded mug - marigold
- ___ 214. Violet basket - marigold
- ___ 215. Prisms compote - amethyst
- ___ 216. Miniature Wide Panel compote - marigold
Crackle candy dish bottom - marigold
Wide Panel water goblet - marigold
Grape & Cable punch bowl base - purple
Interior Panels sherbert - marigold
Plain underplate - marigold
New Swirl goblet - marigold w/blue stem
All Sold Choice

217. ***** END OF EVENING SESSION *****

Saturday, September 12th -- 9:30 a.m.

- ___ 218. Acorn ruffled bowl - marigold
- ___ 219. Carolina Dogwood ruffled bowl - marigold on moonstone
- ___ 220. Weeping Cherries dome ftd ruffled bowl - marigold
- ___ 221. Little Flowers round sauce - green
- ___ 222. Wine & Roses goblet - powder blue - scarce color
- ___ 223. Wine & Roses goblet - marigold
- ___ 224. Orange Tree goblet - blue
- ___ 225. Blackberry Wreath round sauce - marigold
- ___ 226. Holly & Berry bon bon - green

- ___ 227. **Wishbone chop plate - green - extremely rare chop plate, one of three that I know of, super pretty & highly desirable**
- ___ 228. **Wishbone chop plate - amethyst - fantastic example of an extremely rare plate**
- ___ 229. **Wishbone chop plate - marigold - super pretty example of a very rare chop plate**
- ___ 230. Persian Medallion card tray shaped bon bon - amethyst
- ___ 231. Persian Medallion card tray shaped bon bon - blue
- ___ 232. **Wishbone 6" plate - purple - fantastic example, scarce**
- ___ 233. Constellation ruffled compote - marigold
- ___ 234. Constellation compotes (2) - white - choice
- ___ 235. **Holly 9" plate - blue - super nice, scarce**
- ___ 236. **Split Diamond 4 pc. table set - marigold - very scarce set, spooner is the same as sugar bottom**
- ___ 237. **N's Butterfly bon bon w/ribbed back - blue - very rare & super**
- ___ 238. **N's Butterfly bon bon w/ribbed back - amethyst - very nice, very scarce**
- ___ 239. Heavy Grape chop plate - marigold - nice
- ___ 240. Vintage bon bon - amethyst
- ___ 241. **Grape & Cable midsize punch set - blue - extremely rare color for this very rare size of punch set, great piece!**
- ___ 242. Windmill milk pitcher - marigold - nice
- ___ 243. **Blossomtime ruffled compote - purple - very nice example**
- ___ 244. **Blossomtime ruffled compote - marigold - even color**
- ___ 245. **Blossomtime ruffled compote - green - scarce color**
- ___ 246. Fine Cut & Roses rosebowl - purple - minor buffing on one foot
- ___ 247. **Peacocks PCE bowl - emerald green - unbelievably beautiful & extremely rare, a small insignificant pinpoint on edge, neat**
- ___ 248. Fashion 7 pc. water set - marigold - neat shaped pitcher
- ___ 249. Daisy bon bon - blue - scarce bon bon, minor nick on base
- ___ 250. Dragon & Lotus spt ftd ruffled bowl - lime green opal - very pretty & rare, minor mold ruffness on foot
- ___ 251. Question Mark CRE compote - marigold
- ___ 252. **N's Bushel basket - vaseline - extremely rare & absolutely glowing, has super irid.**
- ___ 253. **N's Bushel basket - aqua - super spectacular basket, the irid. is outstanding, & this color is very rare**
- ___ 254. **N's Bushel basket - lime green - very rare color, great!**
- ___ 255. N's Bushel basket - ice green - scarce
- ___ 256. **N's Bushel basket - smoke - very rare color, pretty neat**
- ___ 257. **N's Bushel basket - lavender - very rare color, nice**
- ___ 258. N's Bushel basket - amethyst - spectacular irid., as good as they get

- ___259. N's Bushel basket - blue - nice
 ___260. N's Bushel basket - marigold - dark & nice
 ___261. **Orange Tree hatpin holder - blue - spectacular irid., feet have no harm rubs on bottom**
 ___262. Two Fruits divided bon bon - marigold
 ___263. **Banded Grape & Cable large centerpiece bowl - irid. custard - very rare item, out of the Hartung collection, nice**
 ___264. Wreath of Roses bon bons (3) - marigold - choice
 ___265. **Poppy Show 9" plate - marigold - super pretty example of a scarce & highly desirable plate, pretty even irid.**
 ___266. Miniature Blackberry compotes (2) - amethyst - scarce, choice
 ___267. Miniature Blackberry compote - blue
 ___268. **Enameled Roundup plate - purple - only one known with painted flowers, irid. is over the paint, from Preznick museum**
 ___269. Nearcut water goblets (2) - purple - choice
 ___270. Nearcut water goblet - marigold - nice
 ___271. **Wishbone 10" ruffled bowl - sapphire - super rare color & pretty, not many known, minor nick on base**
 ___272. Wishbone 10" ruffled bowl - green - scarce & nice
 ___273. Wishbone 10" ruffled bowl - purple - nice
 ___274. Orange Tree standard size mug - red - has crack in base
 ___275. Orange Tree standard size mug - blue
 ___276. Orange Tree standard size mugs (2) - marigold - choice
 ___277. **Inverted Strawberry large rosebowl - amethyst - super pretty & very rare, made from master berry**
 ___278. Two Flowers large ftd deep ruffled bowl - marigold
 ___279. **N's Peacock at Urn master IC bowl - ice green - very rare & nice, has minor heat check on edge of bowl**
 ___280. **N's Peacock at Urn master IC bowl - white - very nice, scarce**
 ___281. Floral & Grape water pitcher - amethyst - scarce
 ___282. Floral & Grape water pitcher - marigold - nice
 ___283. Floral & Grape tumblers (3) - marigold - choice
 ___284. Floral & Grape tumbler - blue
 ___285. **Waterlily ftd ruffled sauce - red - cherry red w/pretty irid.**
 ___286. Sailboats CRE ruffled compote - marigold - made from water goblet
 ___287. Blackberry Spray ruffled hat shape - vaseline - nice marigold overlay
 ___288. **N's Corn vase - marigold - dark & nice, very scarce**
 ___289. **N's Corn vase - green - very pretty example of a scarce vase**
 ___290. **N's Corn vase - ice green - very desirable, nice**
 ___291. **N's Corn vase - pastel marigold - very unusaul, has light marigold highlights**
 ___292. Leaf Chain 7" plate - marigold - nice
 ___293. Stippled Singing Birds mug - marigold
 ___294. **Butterfly & Berry ftd centerpiece bowl - amethyst - very rare shape, pretty**
 ___295. Octagon compote - marigold
 ___296. Strawberry bon bon - amber red - very pretty, rare color
 ___297. Strawberry bon bon - blue
 ___298. Strawberry bon bon - marigold
 ___299. **Peacocks ruffled bowl - aqua opal - pretty example, highly desirable**
 ___300. **Peacocks ruffled bowl - blue - scarce & super**
 ___301. Flute toothpick - purple - minor ruffness on bottom points
 ___302. Flute toothpick - green
 ___303. Flute toothpick - marigold
 ___304. **Wishbone epergne - ice blue - extremely rare color & beautiful, lily has been glued in, but who cares, a great piece**
 ___305. **Wishbone epergne - white - frosty & super, extremely rare & highly desirable**
 ___306. **Wishbone epergne - green - another toughie, nice**
 ___307. **Wishbone epergne - purple - very pretty example, as good as this scarce piece can get**
 ___308. **Wishbone epergne - marigold - also very scarce**
 ___309. **Wishbone epergne base - lime green - where's the lily?**
 ___310. Butterflies bon bon - green
 ___311. Strawberry 9" plate w/BW back green - nice
 ___312. Strawberry 9" plate w/BW back - purple - pretty
 ___313. Strawberry 9" plate w/BW back - marigold - also pretty
 ___314. Beaded Shell mugs (2) - purple - choice
 ___315. Ribbon Tie 3 in 1 edge ruffled bowl - blue - scarce
 ___316. Optic & Buttons wine glass - marigold - scarce
 ___317. **Grape & Cable 14 pc. master punch set - marigold - dark color w/super irid., extremely rare & highly desirable, this is a BEAUTIFUL ONE!**
 ___318. Smooth Rays bon bon - purple
 ___319. Drapery candy dish - ice blue - super pretty piece of ice blue
 ___320. **Peacock & Grape spt ftd 9" plate - green - very scarce & desirable**
 ___321. **Grape Arbor 5 pc. tankard water set - white - very frosty & super, a scarce set**
 ___322. **Grape Arbor tankard water pitcher - marigold - dark & fantastic, as good as these get**
 ___323. Grape Arbor tumbler - marigold - dark & fantastic, matches pitcher
 ___324. **Stippled Good Luck ruffled bowl - blue - very scarce & desirable**
 ___325. **Stippled Good Luck ruffled bowl - marigold - lots of pink irid, pretty**
 ___326. Cherry Circles round bon bon - green - lacks irid.

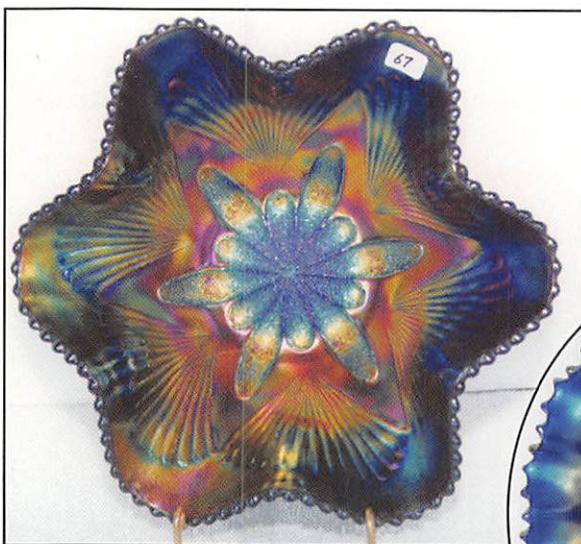
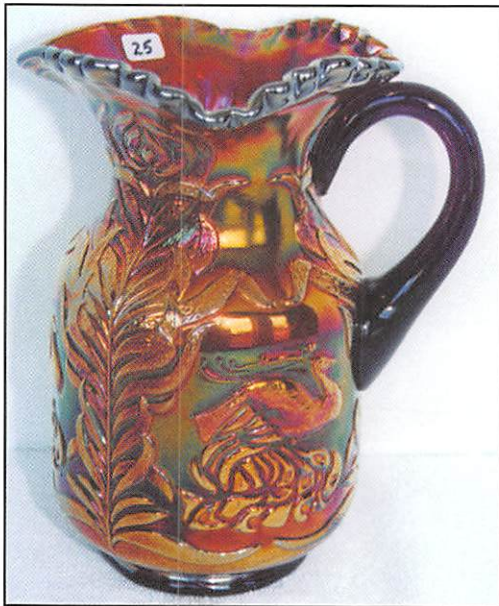
- ___ 327. Maple Leaf 5 pc. water set - purple - scarce
- ___ **328. N's Bushel Basket - lime green opal - the rarest of all bushel baskets, highly desirable, lots of opal, a great basket!**
- ___ **329. N's Bushel Basket - aqua opal - a popular basket that is nice**
- ___ 330. N's Bushel Basket - ice blue - very rare & nice, has damaged handle
- ___ **331. N's Bushel Basket - horehound - very scarce color & pretty**
- ___ 332. N's Bushel Basket - white - frosty & pretty
- ___ 333. N's Bushel Basket - blue opal - not carnival
- ___ 334. N's Bushel Basket - black amethyst - not carnival
- ___ 335. N's Bushel Basket - custard - has nutmeg stain, not irid.
- ___ **336. Grape & Cable ftd ruffled fruit bowl w/Blackberry interior - amethyst - extremely rare bowl, one of 3 or 4 known, has 2" heat check where foot connects to bowl, may be Northwood, a great opportunity to buy a rare piece**
- ___ 337. Imperial Grape ruffled compote - purple - nice
- ___ 338. N's Grape & Cable 11" ruffled bowl - green - very scarce & pretty
- ___ **339. Inverted Strawberry spittoon - marigold - pretty example, very scarce, signed NEAR CUT**
- ___ **340. Windflower 9" plate - blue - scarce**
- ___ 341. Pond Lily ruffled bon bon - white - scarce color
- ___ **342. Wishbone 7 pc. water set - green - very rare set & nice, another great Wishbone piece**
- ___ **343. Wishbone 7 pc. water set - marigold - a rare set**
- ___ 344. Cherry Circles card tray shaped bon bon - amethyst - scarce color
- ___ **345. Orange Tree 9" plate w/trunk - blue - very scarce & nice**
- ___ 346. Round Up 3 in 1 edge bowl - marigold
- ___ 347. Butterfly & Berry 4 pc. table set - marigold - very scarce set
- ___ **348. Holly ruffled compote - red - very rare & desirable, a nice one**
- ___ 349. Holly ruffled compote - green - tough color
- ___ **350. Butterfly & Berry fernery - blue - very, very rare shape, pretty**
- ___ 351. Pinecone round sauce - blue
- ___ 352. Fruits & Flowers ruffled sauce - purple
- ___ **353. Grape & Cable banana boat - ice green - very pretty example & highly desirable, rare**
- ___ **354. Grape & Cable banana boat - ice blue - pretty & also rare**
- ___ **355. Grape & Cable banana boat - white - frosty & nice**
- ___ **356. Grape & Cable banana boat - blue - fantastic example, rare color, pretty!**
- ___ **357. Grape & Cable banana boat - green - very scarce & nice**
- ___ **358. Grape & Cable banana boat - amethyst - scarce**
- ___ **359. Grape & Cable banana boat - irid. custard - very scarce color, a tough one if you collect them**
- ___ 360. Fenton's Peacock at Urn goblet shaped compote - marigold
- ___ 361. N's Blackberry ruffled compote - green
- ___ **362. Wishbone 10" PCE bowl - blue - electric & fantastic! as pretty as these get, has 2 insignificant nicks on edge of bowl**
- ___ **363. Wishbone 10" PCE bowl - white - very rare color, beautiful**
- ___ **364. Wishbone 10" PCE bowl - smoke - one of 2 that we've seen, has chip on back edge, very pretty**
- ___ **365. Wishbone 10" PCE bowl - lavender - has marigold overlay, pretty, only one I've seen like it**
- ___ 366. Wishbone 10" PCE bowl - purple - very pretty example, a dandy
- ___ 367. Wishbone 10" PCE bowl - green - also very pretty
- ___ 368. Wishbone 10" PCE bowl - marigold - dark & nice
- ___ 369. Wishbone 10" PCE bowl - pastel marigold - pretty
- ___ 370. Persian 6" plate - marigold - nice
- ___ 371. Daisy & Plume ftd banana boat shaped bowl - peach opal - lots of opal with unusual whimsy shape, neat, nick on one foot
- ___ **372. Peacock at the Fountain ftd fruit bowl - marigold - very pretty color, scarce**
- ___ 373. Little Barrel - marigold - nick on top edge, pretty
- ___ 374. Raspberry gravy boat - purple
- ___ **375. Captive Rose 9" plate - blue - very nice example, pretty & scarce**
- ___ 376. Lotus & Grape bon bon - amethyst - pretty
- ___ 377. Lotus & Grape bon bon - lime green - pretty
- ___ 378. Fenton's Grape & Cable 7" ruffled bowl - aqua - nice
- ___ **379. Fisherman's mug - peach opal - very, very rare mug, lots of nice opal**
- ___ **380. Fisherman's mug - marigold - one of the better examples I've seen, Wow**
- ___ 381. Fisherman's mug - purple - pretty
- ___ 382. Checkerboard water goblet - amethyst - scarce
- ___ 383. Horse Medallion 7" IC shaped bowl - powder blue - very pretty, rare color
- ___ 384. Enameled Cherries & Little Flowers 6 pc. water set - blue
- ___ **385. Stippled Three Fruits 9" plate w/ribbed back - blue - extremely rare & desirable, has electric highlights, nice**
- ___ 386. Stippled Three Fruits 9" plate w/ribbed back - marigold - scarce
- ___ 387. Orange Tree ftd fruit bowl - marigold - dark & nice
- ___ **388. Hearts & Flowers ruffled bowl - purple - very scarce & highly desirable**
- ___ 389. Three Fruits spt ftd ruffled bowl - purple
- ___ 390. Little Fishes large ftd ruffled bowl - blue - scarce bowl & nice
- ___ **391. M'burg Hanging Cherries 5 pc. water set - marigold - very pretty even color from top to bottom on the pitcher, extremely rare set**

- ___ 392. Beaded Panels tri-cornered compote - peach opal - nice
- ___ 393. M'burg Blackberry Wreath 7" 3 in 1 edge bowl - amethyst - satin
- ___ 394. Horse Medallion rosebowl - marigold - scarce
- ___ 395. Lined Lattice 5" squatty flared out vase - marigold - super pretty
- ___ 396. Heron mug - purple - very scarce
- ___ 397. **Blackberry Open Edge ruffled basket - red - highly desirable & nice**
- ___ 398. Fashion 8 pc. punch set - marigold
- ___ 399. Imperial Wide Panel hdd berry dish - purple - cute & pretty
- ___ 400. **Old Rose Distilling Stippled Grape & Cable 9" plate - green - very scarce & desirable, nice**
- ___ 401. Holly 2 sides up hatshape - blue
- ___ 402. **Sailboats 6" plate - marigold - scarce & nice**
- ___ 403. Ski Star 7 pc. berry set - peach opal
- ___ 404. Dragon & Lotus 3 in 1 edge bowl - green - pretty
- ___ 405. Knotted Beads 10 1/2" CRE vase - marigold
- ___ 406. **Stippled Grape & Cable humidor - blue - very rare color & nice multi-colored irid.**
- ___ 407. Orange Tree flared out compote - marigold - made from wine
- ___ 408. Grape & Cable 9" plates w/plain backs (2) - purple - both nice, choice
- ___ 409. Panther ftd round sauces (2) - green - rare color, one has damaged foot, other has nick on foot, choice
- ___ 410. Leaf & Beads rosebowl w/rayed interior - green
- ___ 411. Leaf & Beads rosebowl w/rayed interior - marigold
- ___ 412. **Circle Scroll tri-cornered hat shape - marigold - very pretty, made from tumbler**
- ___ 413. Horse Medallion 7" plates (2) - marigold - both nice, choice
- ___ 414. Orange Tree IC shaped bowl - green - epoxy on one point, pretty
- ___ 415. **Australian Butterfly Bush & Xmas Bells comport - marigold - very rare & pretty**
- ___ 416. Horse Medallion ruffled bowl - marigold
- ___ 417. **Wishbone ftd deep ruffled bowl - blue - very very pretty, rare color for these**
- ___ 418. Wishbone ftd deep ruffled bowl - green - nice
- ___ 419. Wishbone ftd deep ruffled bowl - amethyst
- ___ 420. Wishbone ftd deep ruffled bowl - marigold
- ___ 421. Holly goblet shaped compote - lime green - marigold overlay
- ___ 422. Colonial mug - marigold
- ___ 423. Peacock & Grape IC shaped bowl - blue - 2 points buffed
- ___ 424. **N's Bushel Basket w/smooth handles - green - very rare w/smooth handles & pretty**
- ___ 425. Fern ruffled compote - amethyst
- ___ 426. Three Fruits 9" plate w/BW back - green - nice
- ___ 427. Three Fruits 9" plate w/BW back - marigold - also nice
- ___ 428. Miniature Loving Cup - light marigold - scarce
- ___ 429. M'burg Primrose ruffled bowl - amethyst - radium
- ___ 430. Dogwood Sprays dome ftd ruffled bowl - peach opal
- ___ 431. **M'burg Courthouse ruffled bowl - amethyst - radium, very scarce & desirable, includes postcard of courthouse**
- ___ 432. Three Fruits ruffled bowl w/plain back - green - pretty
- ___ 433. Luster & Clear bon bons (2) - green - choice
- ___ 434. **Daisy & Plume ftd rosebowl w/Blackberry interior - ice green - super rare & pretty, has epoxy on one foot**
- ___ 435. **Daisy & Plume ftd rosebowl w/Blackberry interior - ice blue - extremely rare & very nice**
- ___ 436. **Daisy & Plume ftd rosebowl w/Blackberry interior - white - frosty & super, also very nice**
- ___ 437. **Daisy & Plume ftd rosebowl w/Blackberry interior - blue - very pretty & also very rare**
- ___ 438. Daisy & Plume ftd rosebowl w/Blackberry interior - green - very tightly crimped
- ___ 439. Daisy & Plume ftd rosebowl w/Blackberry interior - marigold - super dark & nice
- ___ 440. Daisy & Plume ftd rosebowls (2) - green - one w/Stippled Rays interior, one plain, choice
- ___ 441. N's Stippled Rose Wreath bon bon - purple - rare & nice
- ___ 442. Fenton's Peacock at Urn 9" plate - blue - irid. only on back
- ___ 443. Robin mug - marigold
- ___ 444. **Fashion breakfast set - smoke - rare set, nice**
- ___ 445. M'burg Hanging Cherries 7" IC shaped bowl - green - satin & super
- ___ 446. Grape & Cable cvd compote - purple - very scarce & desirable
- ___ 447. Soda Gold tumbler - marigold
- ___ 447A Grapevine Lattice tumbler - marigold
- ___ 448. Fruits & Flowers bon bon - green - nice
- ___ 449. **Embroidered Mums ruffled bowl - purple - very scarce & desirable**
- ___ 450. Feathered Serpent large ruffled bowl - blue - nice
- ___ 451. Grape Arbor ruffled hat shape - blue - made from tumbler, scarce
- ___ 452. Star & Shield 5" IC shaped bowl - marigold
- ___ 453. Grape & Cable 9" plate w/BW back - green - super! as pretty as they get
- ___ 454. Grape & Cable shotglass - marigold - nice
- ___ 455. Grape & Cable shotglass - clear w/painted grapes - not carnival
- ___ 456. **M'burg Leaf & Little Flowers goblet shaped compote - green - satin & scarce**
- ___ 457. Imperial Grape ruffled bowl - purple - pretty
- ___ 458. **Peacock at the Fountain 8 pc. berry set - purple - scarce set**
- ___ 459. Fine Cut & Roses candy dish - ice blue - foot nicks
- ___ 460. **Stippled Strawberry PCE bowl - green - extremely rare color for these, nice!**
- ___ 461. Memphis punch cups (5) - white - choice
- ___ 462. Hearts & Trees ftd master berry bowl - marigold - very pretty & hard to get

- ___ **463. Peacock & Grape spt ftd ruffled bowl - lime green opal - very scarce, pretty**
- ___ 464. Tulip & Cane wine glass - marigold
- ___ 465. Fan milk pitcher - marigold - scarce
- ___ 466. Horse Medallion ftd ruffled bowl - marigold - very pretty example
- ___ **467. Tornado small size ribbed vase - purple - pretty, very rare, a nice piece, nick on base**
- ___ 468. Open Rose rosebowl - amber - super pretty
- ___ 469. Persian Garden IC sauce - white
- ___ 470. Dragon & Lotus IC shaped bowl - blue
- ___ 471. Herring Bone & Beaded Ovals ruffled compote - marigold - scarce
- ___ 472. Orange Tree powder jar - marigold
- ___ 473. Grape & Cable punch cups (4) - purple - choice
- ___ **474. Inverted Feather cracker jar - green - super pretty**
- ___ 475. Curved Star open chalice - blue
- ___ **476. Rustic 19" funeral vase - amethyst - super pretty, has reddish, lavender type irid. a beauty**
- ___ **477. Rustic 20" funeral vase - amethyst - just as pretty, a little taller, would make a great pair**
- ___ **478. Rustic 19" funeral vase - marigold - dark & pretty**
- ___ **479. Rustic 18" funeral vase - white - frosty, pretty, nice!**
- ___ 480. Windflower ruffled bowl - marigold
- ___ 481. Horse Medallion ftd nut bowl - blue
- ___ 482. 7" Enameled bottle - marigold - enameled w/flowers
- ___ 483. Good Luck PCE bowl w/ribbed back - green - pretty
- ___ 484. Peacock at the Fountain berry bowls (2) - marigold - choice
- ___ 485. Coin Spot ruffled compote - marigold
- ___ 486. Pony ruffled bowl - marigold
- ___ **487. Rose Show 9" plate - marigold - dark & super, lots of pinks, a little deep**
- ___ **488. Rose Show 9" plate - white - pretty, a nice example**
- ___ 489. Grape Delight rosebowl - white - chip on foot
- ___ 490. Coin Dot rosebowl - amethyst
- ___ 491. Double Stemmed Rose dome ftd bowl - white - pretty
- ___ 492. Fantail IC shaped ftd bowl - blue - pretty, has buffed point
- ___ 493. Scotch Thistle CRE ruffled compote - green - nice
- ___ 494. Orange Tree ftd berry bowls (2) - white - choice
- ___ **495. Nippon ruffled bowl - purple - super pretty, a dandy!**
- ___ 496. Leaf Rays nappy - peach opal
- ___ 497. Pinecone 6" plate - marigold - scarce
- ___ 498. Orange Tree shaving mug - blue
- ___ **499. Wishbone ftd ruffled bowl - lime green - very rare color & nice**
- ___ **500. Wishbone ftd ruffled bowl - ice blue - super pretty, has wonderful irid.**
- ___ **501. Wishbone ftd ruffled bowl - white - frosty & nice**
- ___ 502. Wishbone ftd ruffled bowl - purple - pretty
- ___ 503. Wishbone ftd ruffled bowl - marigold - dark & nice
- ___ 504. Near Cut handled nappy - marigold
- ___ **505. Isaac Benesch adv. ruffled bowl - amethyst - very pretty example**
- ___ 506. Stippled Rays card tray shaped bon bon - green
- ___ **507. Stag & Holly large size ftd IC shaped bowl - marigold - very pretty**
- ___ 508. Miller's Furniture adv. Basketweave Open Edge 2 sides up basket - marigold
- ___ 509. Persian Garden 6" plate - white - very nice, has pool of Pearls back
- ___ 510. Fanciful IC shaped bowl - peach opal
- ___ 511. Windflower 6 ruffled bowl - blue - nice
- ___ 512. M'burg Grape Wreath 7" 3 in 1 edge bowl - amethyst - radium & nice
- ___ 513. Many Fruits punch bowl base - marigold - if you need it, it's a toughie
- ___ 514. Cathedral creamer - blue
- ___ **515. Dandelion mug - green - scarce color, nice**
- ___ 516. Peacock Tail bon bon - marigold
- ___ 517. Stippled Fruits & Flowers bon bon - marigold
- ___ **518. Wishbone 9" ftd plate - green - extremely rare plate & nice, not many in green around**
- ___ **519. Wishbone 9" ftd plate - marigold - extremely rare color, not overly dark but has super irid.**
- ___ **520. Wishbone 9" ftd plate - purple - scarce & desirable**
- ___ 521. Waterlily bon bon - marigold
- ___ 522. Honeycomb & Clover bon bon - marigold
- ___ 523. Enameled water pitcher - white - non irid.
- ___ 524. Stippled Petals ruffled bowl - peach opal
- ___ 525. Tree Bark 5 pc. water set - marigold
- ___ 526. Ftd Tree of Life 7 pc. water set - marigold
- ___ 527. Depression Glass large bowl - marigold
- ___ 528. Iris & Herringbone 7 pc. water set - marigold
- ___ 529. Iris & Herringbone wine - marigold
- ___ 530. Iris & Herringbone large bowl - marigold

Seeck Auctions





Seeck Auctions

