



BURNS

AUCTION SERVICE

N.E.C.G.A. Convention Auction

Friday, September 11, 1998

Previews: 4:00 - 6:00 p.m.

Auction: 6:00 p.m.

at the

**Best Western Sovereign Hotel
& Conference Center**

(formerly Ramada Hotel)

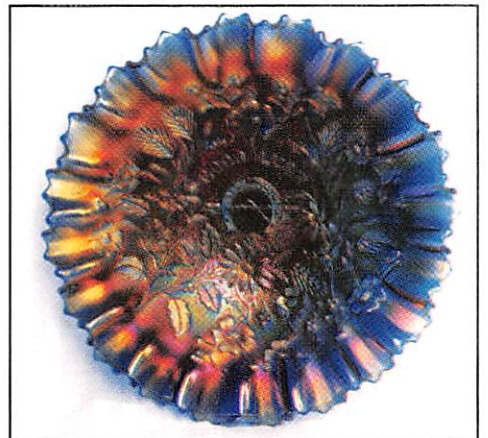
1080 Riverdale St.

West Springfield, Mass. 01089

*Located off Exit 4 of Mass Pike - south on Riverdale St. (Rte. 5 -
located right behind Friendly's Restaurant)*

(413) 781-8750

Alan Israelson - Auctioneer • Mass. License #1355



Well, you can always tell when the end of summer is here. First is Labor Day weekend and second, the kid's are back to school and finally we do the N.E.C.G.A. Convention Auction in conjunction with the Fall Brimfield Antique Markets.

This year's collection is from the Swanks of New Cumberland, PA. The elder Swanks had collected in the 70's and bought most of their glass in the Shupp's Grove and Renninger's Antique Markets in Pennsylvania. They bought what was available and we've picked items most suitable for the Convention. Hope you can make it, you'll have a really nice time.

The Convention runs in conjunction with Brimfield Week of '98, which runs the 8th through the the 12th of September. The Convention itself will get going Thursday, with the auction on Friday evening, seminars and banquet on Saturday. This is a nice selection at a convention with a lot of nice people so if ya have the chance -make a point of attending. By, the way, our own Richards Boys will be doing one of the seminars... wonder what they'll talk about this time?!?

The Best Western Sovereign Hotel & Conference Center (formerly Ramada Hotel) will host the event. It's located right off Exit 4 of the Mass Pike on Riverdale St. in West Springfield - an easy trip and a commute of less than an hour to the Brimfield Markets. For further information on the Convention contact Harold and Lynne March of Canton, Mass. at (617) 821-4492 and for information on the glass or if we can be of any assistance call or write:

Burns Auction Service

Tom Burns
P.O. Box 608
Bath, New York 14810
(607) 776-7942

Bill Richards
44 Water St., Poland, OH 44514
(330) 757-2001
FAX (330) 757-4917

Bill Richards, III
2253 Country Lane
Poland, OH 44514
(330) 755-2620

Alan Israelson - Auctioneer • Mass. License #1355

Maid Bids honored under the following conditions:

1. No deposit required. Bidders will take full responsibility to honor any and all bids we execute for them. Payment in full plus postage and handling required after notification and before we ship any item to them.
2. Items are bid on in perfect condition with average or above average iridescence OR as listed in the brochures. Bids will not be carried out when damage on an item has been found during the auction. **PEOPLE PRESENT AT AUCTION ARE RESPONSIBLE FOR FINDING ANY PINHEADS, WEAR, SPOTTINESS, MANUFACTURER'S DEFECTS OR ANY OTHER MINOR FLAWS, ETC.**
3. Successful bidders will be notified by collect call from the auctioneer (so be sure to include phone number).
4. Phone inquiries about the glass or any other questions are welcome.
5. If you have some other person at the auction bidding for you, they must pay for the item before taking it.
6. Any terms or conditions given the day of the auction will supersede any previously published information.
7. Mail, Email, FAX and Phone bids due by Tuesday, September 8, 1998.

- | | |
|--|---|
| <p>___ 1. Depression Liberty Bell Bank - Lt. Mari.</p> <p>___ 2. Depression Lucky Bank - Lt. Mari.</p> <p>___ 3. Depression "Be Wise" Owl Bank - Lt. Mari. (scarce)</p> <p>___ 4. Depression Era Bulbous Swirl Ribbed Perfume - Lt. Mari. (unusual)</p> <p>___ 5. Unsigned Devilbiss Tall Atomizer - Lt. Mari.</p> <p>___ 6. Pair Plain Patterned Car Vases (No Brackets) - Mari. (selling pair for one money)</p> <p>___ 7. Imperial Soda Gold Car Vase w/ Bracket - Mari.</p> <p>___ 8. Canada Dry Bottle w/ Partial label - Mari.</p> <p>___ 9. Welch Paperweight - Dark (scarce)</p> <p>___ 10. N HEART AND FLOWERS PLATE WITH RIBBED EXTERIOR - PUR. (VERY SCARCE AND DESIRABLE; NICE MULTI-COLORED IRID; NICE)</p> <p>___ 11. N Embroidered Mums 8 Ruffled Bowl with Ribbed Exterior - Amy. (very scarce and desirable pattern; nice color and irid. with gold highlights)</p> <p>___ 12. N Blackberry Stemmed Ruffled Compote with Basketweave Exterior - Amy. (scarce, nice, blue, gold and red irid.)</p> <p>___ 13. N Blossomtime Stemmed 6 Ruffled Compote with Floral Exterior - Lt. Mari. (very scarce; has attractive satiny finish)</p> <p>___ 14. N Daisy and Plume 3 ftd. Rose Bowl with Stippled Rays Interior - Green (couple pinheads on feet; silvery irid.)</p> | <p>___ 15. N LEAF AND BEADS FTD ROSE BOWL - ELEC. BLUE (ABSOLUTELY FANTASTIC COLOR AND IRID.)</p> <p>___ 15A. N LEAF AND BEADS FTD. ROSE BOWL - AQUA OPAL. (PROBABLY ABOUT AS SUPER A PASTEL EXAMPLE AS YOU WILL FIND; BEAUTIFUL BLUE HIGHLIGHTS - WHATTA WINNER!)</p> <p>___ 16. N Leaf and Beads ftd. Rose Bowl with Floral Interior - Mari. (nice satiny finish - attractive)</p> <p>___ 17. N Leaf and Beads ftd. Rose Bowl with Stippled Rays Interior - Green (actually a nice example for one of these)</p> <p>___ 18. N Wishbone ftd. 8 Ruffled Bowl with Ruffles and Rings Exterior - Dk. Mari. (nice color and irid.)</p> <p>___ 19. N WISHBONE FTD. TRI-CORNERED BOWL WITH RUFFLES AND RINGS EXTERIOR - MARI. (VERY RARE AND DESIRABLE SHAPE; NICE COLOR AND IRID.)</p> <p>___ 20. N POINSETTIA AND LATTICE FTD 8 RUFFLED BOWL WITH RIBBED EXTERIOR - MARI. (A LIGHTER COLOR WITH A BEAUTIFUL SATINY FINISH - VERY DESIRABLE AND NICE)</p> <p>___ 21. N Star of David and Bows Domed 8 Ruffled Bowl - Green (scarce color; nice)</p> <p>___ 22. 10" N Diamond Points Swung Vase - Amy. (satiny finish)</p> |
|--|---|

- ___ 23. N G & C Cologne Bottle base only - Pur. (nice color and irid.)
- ___ 24. N G & C Cologne Bottle base only - Dk. Mari. (nice color and irid.)
- ___ 25. **N G & C 14 PC. MASTER PUNCH SET - PUR. (RARE AND DESIRABLE SET; NICE COLOR AND IRID.; THESE ARE SELLING FOR REASONABLE PRICES NOWADAYS - TAKE ADVANTAGE NOW!)**
- ___ 26. N G & C Small Size ftd. Fruit Bowl - Pur. (nice color and irid; attractive item)
- ___ 27. N G & C Handled Punch Cup - Pur.
- ___ 28. N G & C with Thumbprint Master Berry Bowl - Dk. Mari (super color)
- ___ 29. (2) N G & C with Thumbprint Ind. Berry Bowls - Mari. (selling so much for pair)
- ___ 30. N G & C Covered Cracker Jar - Dk. Mari. (getting really scarce; nice color and irid.)
- ___ 30A. **N G & C LARGE ICE CREAM BOWL WITH BASKETWEAVE EXTERIOR - WHITE (VERY SCARCE AND DESIRABLE; NICE EXAMPLE)**
- ___ 31. N G & C Lg. Stemmed Open Compote - Dk. Mari. (repaired on edge)
- ___ 32. N G & C Ruffled Hat from Tumbler - Green (scarce color)
- ___ 33. N G & C Handled Bon Bon with Basketweave Ext. - Green (nice irid.)
- ___ 34. N G & C Candlestick - Pastel Mari. (light color w/ really nice irid.)
- ___ 35. **N DANDELION TANKARD WATER PITCHER - GREEN (RARE AND VERY DESIRABLE; GREAT COLOR WITH REALLY NICE IRID.)**
- ___ 36. N G & C 7 pc. Water Set - Dk. Mari. (nice set; nice color)
- ___ 37. N G & C Variant Bowl with Pie Crust Edge & Plain Exterior - Lt. Mari.
- ___ 38. N G & C ftd. Plate with Meander Exterior - Green (a beauty with nice color and irid; pretty scarce)
- ___ 39. N Grape Leaves 8 Ruffled Bowl - Green
- ___ 40. **N SMALL SIZE TORNADO VASE WITH TRI-CORNERED TOP - GREEN (RARE AND DESIRABLE; NICE COLOR AND IRID.)**
- ___ 41. 12 - 12 1/2" Tall N Tree Trunk Mid Size Swung Vase - Pur. (nice color and irid; scarce)
- ___ 42. 10 1/2" Tall N Tree Trunk Standard Swung Vase Pur. (nice color)
- ___ 43. 5 3/4" Tall N Thin Rib Squatty Flared Vase - Pur. (nice color; scarce size)
- ___ 44. 12 - 12 1/2" Tall N Tree Trunk Standard Swung Vase - Amy. (really swung for one of these)
- ___ 45. **10 - 10 1/4" TALL N LEAF COLUMNS SWUNG VASE - ICE BLUE (RARE, DESIRABLE; NICE COLOR; IRID. A BIT LIGHT)**
- ___ 46. 6 1/2 " N Leaf Columns Squatty Swung Vase - Lime Ice Green (bruised and cracked, but quite a desirable item)
- ___ 47. **7 1/2" N DRAPERY SWUNG VASE - ICE BLUE (VERY SCARCE AND VERY DESIRABLE; SUPER)**
- ___ 48. 10" N Diamond Point Swung Vase - Amy. / Mari. (odd tint)
- ___ 49. N Three Fruits Medallion Deep ftd. 8 Ruffled Bowl with Meander Exterior - Green (spotty irid.)
- ___ 50. **N PEACOCK AT THE FOUNTAIN HANDLED WATER PITCHER - BLUE (VERY SCARCE AND VERY DESIRABLE; NICE)**
- ___ 50A. N Peacock at the Fountain Water Pitcher - Mari. (Mari. (very scarce; nice color and irid.)
- ___ 51. (6) N Singing Bird Handled Mugs - Blue (selling choice; nice range of irid.)
- ___ 51A. (6) N Singing Bird Handled Mugs - Mari. (selling choice)
- ___ 52. N Peacock at the Fountain ftd. Ruffled Fruit Bowl - Dk. Mari. (nice color and irid; scarce)
- ___ 53. **N PEACOCK AT THE URN LG. ICE CREAM BOWL - DK. MARI. (SCARCE AND VERY DESIRABLE; NICE)**
- ___ 53A. **N PEACOCK AT THE URN IND. ICE CREAM BOWL - ICE BLUE (SCARCE AND DESIRABLE; NICE BASE COLOR WITH SILVERY IRID.)**
- ___ 54. **N PEACOCKS 8 RUFFLED BOWL WITH RIBBED EXTERIOR - SODA GOLD / AMY. (VERY RARE BASE COLOR; IRID. A BIT SPOTTY)**
- ___ 55. **N THREE FRUITS MEDALLION FTD. RUFFLED BOWL WITH MEANDER EXTERIOR - AQUA OPAL. (RARE AND DESIRABLE: NICE OPAL. AND IRID.)**
- ___ 56. N Three Fruits Domed Ruffled Bowl with Basketweave Exterior - Mari. (nice satiny finish)
- ___ 57. 9 3/4" N Fruits and Flowers Lg. 8 Ruffled Bowl with Basketweave Exterior - Amy. (nice color and irid.)
- ___ 58. N Good Luck 8 Ruffled Bowl with Ribbed Exterior - Dk. Mari. (scarce; really nice color and irid.)
- ___ 59. **N ROUND HANDLED BUSHEL BASKET - AQUA OPAL. (VERY SCARCE AND DESIRABLE; NICE OPAL.)**
- ___ 60. **N RASPBERRY FTD. OCCASIONAL GRAVY BOAT - AQUA / TEAL (VERY RARE BASE COLOR; NEAT ITEM; MAY HAVE ROUGHNESS ON ONE FOOT)**
- ___ 61. N Raspberry Handled Milk Pitcher - Dk. Mari. (super color and irid.; nice item)
- ___ 61A. **N RASPBERRY 7 PC. WATER SET - GREEN (RARE SET; NICE COLOR AND WELL MATCHED; NICE SET)**
- ___ 61B. **N RASPBERRY 7 PC. WATER SET - PUR. (VERY DESIRABLE WITH SUPER BLUE HIGHLIGHTS; REALLY NICE)**
- ___ 61C. N Raspberry Water Pitcher - Mari. (very scarce; nice color and irid.)
- ___ 61D. (2) N Raspberry Tumblers - Mari. (nice color; selling choice)
- ___ 61E. **N RASPBERRY MILK PITCHER - GREEN (VERY SCARCE AND DESIRABLE; NICE COLOR AND IRID.)**
- ___ 61F. **N RASPBERRY MILK PITCHER - PUR. (VERY SCARCE AND DESIRABLE; NICE COLOR AND IRID.)**
- ___ 61G. N Raspberry Milk Pitcher - Mari. (very scarce and desirable; nice color)
- ___ 62. **N DRAPERY ROSE BOWL - DK. MARI. (VERY SCARCE AND VERY ATTRACTIVE ITEM)**
- ___ 62A. **N BEADED CABLE FTD. ROSE BOWL - WHITE (VERY SCARCE AND ATTRACTIVE EXAMPLE; NICE AND FROSTY)**
- ___ 63. N Stretch Rose Bowl on Square Tree of Life Base - Honey Amber. (unusual item both in shape and color)
- ___ 64. **N WIDE PANEL 4 LILY EPERGNE - DK. MARI. (VERY SCARCE AND REALLY DESIRABLE; PRETTY GOOD SHAPE)**
- ___ 65. **N POPPY RUFFLED RELISH TRAY - WHITE (VERY SCARCE ITEM TO FIND; NICE IRID.)**
- ___ 66. **N STRAWBERRY PLATE WITH BASKETWEAVE EXTERIOR - AMY. (SCARCE; NICE SATINY IRID.)**
- ___ 67. N Strawberry Bowl with Plain Exterior - Mari. (really nice color and irid.)
- ___ 68. N Strawberry Bowl with Pie Crust Edge and Basketweave Exterior - Mari. (nice irid.)
- ___ 69. N Fruit and Flowers Stemmed Handled Bon Bon with Basketweave Exterior - Mari. (nice color)
- ___ 70. **N WILD STRAWBERRY HANDGRIP PLATE WITH BASKETWEAVE EXTERIOR - PUR. (SUPER, SUPER EXAMPLE; GREAT IRID.)**
- ___ 71. N Wild Strawberry Handgrip Plate with Basketweave Exterior - Lt. Mari. (scarce: light irid.)
- ___ 72. 9 1/2" N Wild Strawberry Lg 8 Ruffled Bowl with Plain Exterior - Pur. (super color and irid; really nice)
- ___ 73. (3) 6" N Fruit and Flowers Ind. Ruffled Berry Bowls with Basketweave Exterior - Amy. (nice color and irid.; selling choice)

- ___74. (6) N Acorn Burr Ind. Berry Bowls - Dk. Mari. (selling so much each for set; nice)
- ___75. N Acorn Burr 8 pc. Punch Set - Green (top is cracked; still a really nice shelf piece)
- ___76. N Butterfly Handled Bon Bon with Plain Exterior - Amy. (nice color and irid.)
- ___77. N Sunflower Deep 8 Ruffled ftd. Bowl with Meander Exterior - Amy. (satiny finish)
- ___78. N Oriental Poppy Tumbler - Pur. (small flake on edge)
- ___79. N Ground Cherries Enameled Decorated Tumbler - Blue
- ___80. N Wide Panel Creamer, Spooner, and Covered Sugar - Mari. (blank for Singing Bird; selling as a set)
- ___81. N Fine Cut and Roses ftd. Rose Bowl - Pur. (silvery irid.)
- ___82. N Wild Rose ftd. Nut Bowl - Mari.
- ___83. Maker (?) Intaglio Three Fruits Lg. Ice Cream Shaped Bowl - Dk. Mari. (unusual; nice Marigold finish)
- ___84. Maker (?) Intaglio Strawberry Ind. Round Ice Cream Bowl - Mari. (scarce size)
- ___85. **IMPERIAL DIAMOND LACE 5 PC. WATER SET - PUR. (SCARCE; TYPICAL NICE COLOR AND IRID.)**
- ___85A. Imperial Diamond Lace Tumbler - Pur. (scarce; nice color and irid.)
- ___86. Imperial Tiger Lily 5 pc. Water set - Dk. Mari. (super color and irid.)
- ___87. (4) Imperial Tiger Lily Tumblers - Mari. (selling choice)
- ___88. (2) Imperial Grape Cups and Saucers - Dk. Mari. (scarce sets; selling choice)
- ___89. Imperial Soda Gold 3 pc. Console Set - Mari. (scarce set; super irid.)
- ___90. **6 1/2" IMPERIAL GRAPE FLAT PLATE - PUR. (VERY SCARCE; THIS ITEM HAS SUPER, SUPER IRID. - NICE)**
- ___91. 7 3/4 - 8" Imperial Heavy Grape Flat Plate - Helios Green (scarce; silvery irid.)
- ___92. **9 3/4" IMPERIAL EMBOSSED SCROLL FLAT PLATE - PUR. (SUPER IRID. AND FLAT; REALLY NICE)**
- ___93. **10" IMPERIAL ACANTHUS CHOP PLATE - MARI. (VERY SCARCE; SUPER IRID.)**
- ___94. **10 1/2" IMPERIAL OVAL AND ROUND CHOP PLATE - MARI. (ACTUALLY A VERY SCARCE ITEM; NICE COLOR)**
- ___95. **9 1/2" X 6 1/2" IMPERIAL PANSY FLAT OVAL DRESSER TRAY - MARI. (VERY SCARCE; SUPER DETAIL AND IRID.)**
- ___96. Imperial 474 Lg. Handled Water Pitcher - Mari. (scarce size; really nice color)
- ___97. Imperial Fashion 8 pc. Ruffled Punch Set - Dk. Mari. (super irid.)
- ___98. Imperial Octagon Wine Decanter and Stopper - Dk. Mari. (nice color and irid.)
- ___99. (2) Imperial Octagon Stemmed Wine Glasses - Dk. Mari. (selling choice)
- ___100. **IMPERIAL ROCOCO 6 RUFFLED VASE - SMOKE (VERY SCARCE AND VERY DESIRABLE; LOOKS TO BE PERFECT)**
- ___101. Imperial Rococco Flared 6 Ruffled Vase - Mari. (scarce; nice color - looks to be perfect)
- ___102. Imperial Hobstar and Band 6 pc. Water Set - Lt. Mari. (scarce set; well matched)
- ___103. 5" Tall Imperial Miniature Morning Glory Swung Vase - Mari. (nice color)
- ___104. 6 1/4" Tall Imperial Frosted Block ftd. Cylinder Vase - Mari. (scarce shape)
- ___105. **3 1/2" TALL X 8" DIAMETER IMPERIAL INTERIOR WIDE PANEL WHIMSEY SQUATTY FLARED VASE - PUR. (SUPER IRID.; UNUSUAL ITEM WITH A GREAT SHAPE)**
- ___106. 9" Imperial Star of David Ruffled Bowl - Amy. (silvery irid.; bowl tilts a bit.)
- ___107. Imperial Embossed Scroll Stemmed Ruffled Compote with Curved Star Ext. - Amy. (super, super irid. - a beaut)
- ___108. Imperial Columbia Domed ftd. Plate - Mari. (scarce; super irid.)
- ___109. Imperial Open Rose Rose Bowl - Amber. (nice color)
- ___110. Imperial Star Medallion Handled Milk Pitcher - Smoke (scarce color; nice)
- ___111. 8 3/4" Imperial Hattie 8 Ruffled Bowl - Smoke (super irid.; nice)
- ___112. Imperial Stretch Handled Cookie Tray with Wheel Etched Design - Smoke (scarce)
- ___113. 9" Imperial Open Rose Flat Plate - Mari. (nice color and irid.)
- ___114. 11 1/4" Imperial Beaded Bullseye Swung Vase - Dk. Mari. (super irid.)
- ___115. Imperial Windmill 5 pc. Water Set - Mari. (has small size pitcher; nice set)
- ___116. Imperial Daisy Handled Flower Basket - Mari. (nice color)
- ___117. Imperial Cockatoo Wall Vase - Mari. (popular item; nice color)
- ___118. 8" Imperial Sand and Shell 6 Ruffled Bowl - Helios Green
- ___119. (2) M'burg Diamond Tumblers - Green (selling choice; nice color and irid.)
- ___120. **M'BURG DIAMOND HANDLED WATER PITCHER - GREEN (VERY SCARCE; PERFECT WITH SATINY FINISH)**
- ___121. 7 1/2" M'burg Blackberry Wreath 6 Ruffled Bowl - Green (satiny irid.)
- ___122. **9 3/4" M'BURG NESTING SWAN 6 RUFFLED BOWL - GREEN (SATINY IRID.; VERY SCARCE AND DESIRABLE)**
- ___123. 9 3/4" M'burg Nesting Swan 6 Ruffled Bowl - Mari. (radium; damaged on edge)
- ___124. 8 3/4" M'burg Blackberry Wreath Bowl with 3 in 1 Edge - Mari. (satiny finish)
- ___125. **M'BURG HANGING CHERRIES COVERED BUTTER DISH - MARI. (VERY SCARCE ITEM WITH NICE SATINY FINISH)**
- ___126. **M'BURG HANGING CHERRIES COVERED SUGAR BOWL - MARI. (ANOTHER VERY SCARCE ITEM WITH A SATINY FINISH)**
- ___127. 7 1/2" M'burg Little Stars 6 Ruffled Bowl - Green (satiny and very scarce; nice item)
- ___128. **M'BURG FEATHER & HEART HANDLED WATER PITCHER - MARI. (RADIUM AND VERY DESIRABLE; NICE)**
- ___129. (2) M'burg Feather & Heart Tumblers - Mari. (satiny finish; selling choice)
- ___130. **5" M'BURG PEACOCK PROOF. SAUCE - AMY. (RADIUM AND VERY DESIRABLE; NO BEADING; NO BEE; NICE)**
- ___131. 5 1/4" M'burg Peacock Sauce - Mari. (satiny and very scarce; no beading; no bee)
- ___132. 5 1/2" M'burg Blackberry Wreath Ice Cream Shaped Sauce - Amy. (radium and a beaut)
- ___133. 10" M'burg Hanging Cherries Lg. Ice Cream Bowl - Mari. (chipped on base; has satiny irid.)
- ___134. 10" M'burg Seaweed Bowl with 3 in 1 Edge - Amy. (very rough at base; satiny and nice)
- ___135. **6" M'BURG HOLLY SPRIG VARIANT DEEP ROUND BOWL WITH TIGHT CRIMPED EDGE - MARI. (RADIUM AND A VERY DESIRABLE ITEM)**
- ___136. M'burg Holly Sprig 2 Sided Card Tray with Isaac Benesch 54th Anniversary Advertising - Mari. (satiny and scarce; nice color and irid.)
- ___137. 10" M'burg Holly Whirl Lg. 6 Ruffled Bowl - Mari. (satiny finish; nice)
- ___138. 9 1/2" M'burg Rays & Ribbons 6 Ruffled Bowl - Mari. (satiny finish)
- ___139. 9 3/4 - 10" M'burg Fleur de Lei Ice Cream Shaped Bowl - Lt. Mari. (radium finish on a light base glass)

- ___ 140. M'burg Swirl Hobnail Rose Bowl - Dk. Mari. (peeling on top edge; a nice satiny example)
- ___ 141. 10" M'burg Rosiland Lg. 6 Ruffled Bowl - Green (small chip on base; nice satiny finish)
- ___ 142. European Fleur de Lei Flat Handled Basket - Lt. Mari.
- ___ 143. **EUROPEAN "DIAMOND FINE CUT" SINGLE LILY EPERGNE ON METAL BASE - MARI. (NICE COLOR; AN UNUSUAL ITEM)**
- ___ 144. **EUROPEAN VENETIAN FLOWER HOLDER WITH CLEAR FLOWER FROG - BLUE (VERY RARE COLOR FOR THIS ITEM; NEAT!)**
- ___ 145. **7" TALL X 9" DIAMETER BUTTERFLY AND WALRATH LG. 12 RUFFLED COMPOTE - MARI. (VERY SCARCE ITEM; NICE COLOR AND IRID.)**
- ___ 146. **4 1/4" TALL X 7 1/2" DIAMETER BUTTERFLY AND BELL FLOWER STEMMED 12 RUFFLED COMPOTE - PUR. (SUPER SCARCE; NICE COLOR AND IRID.)**
- ___ 147. **9 1/2" AUSTRALIAN THUNDERBIRD LG. 12 RUFFLED BOWL - PUR. (VERY SCARCE; REAL NICE COLOR AND IRID.)**
- ___ 148. **9 3/4" AUSTRALIAN MAGPIE LG. 8 RUFFLED BOWL - MARI. (SCARCE ITEM WITH NICE COLOR AND IRID.)**
- ___ 149. **9 1/4" AUSTRALIAN KINGFISHER LG. 12 RUFFLED BOWL - DK. MARI. (ANOTHER SCARCE ITEM WITH NICE COLOR AND IRID.)**
- ___ 150. **9 1/2" AUSTRALIAN KANGAROO LG. 16 RUFFLED BOWL - MARI. (RARE AND DESIRABLE PATTERN IN ANY COLOR; A NICE EXAMPLE)**
- ___ 151. **9 1/2" AUSTRALIAN NESTING SWAN LG. 8 RUFFLED BOWL - MARI. (VERY SCARCE; NICE WITH GREAT DETAIL AND IRID.)**
- ___ 152. Dugan Six Petals Tri-Cornered Bowl - P. Opal (nice opal and irid.)
- ___ 153. Dugan Beaded Panels (Open Opals) Tri-Cornered Crimped Edge Stemmed Compote - P. Opal. (really nice opal.)
- ___ 154. 9" Dugan Pulled Loop Swung Vase - P. Opal (nice opal. and irid.)
- ___ 155. 9" Dugan Apple Blossom Twigs Bowl with 3 in 1 Edge and Basketweave Exterior - Dk. P. Opal (super scarce and desirable shape; nice)
- ___ 156. 11" Dugan Petal and Fan Lg. 6 Ruffled Bowl with Jeweled Heart Exterior - Dk. P. Opal. (scarce; nice opal. and irid.)
- ___ 157. 6 1/2" Dugan Petal and Fan Low 8 Ruffled Bowl / Plate with Jeweled Heart Exterior - P. Opal. (very scarce and desirable shape)
- ___ 158. 8 1/2" Dugan Apple Blossom Twigs 10 Ruffled Bowl - Lt. P. Opal.
- ___ 159. 4 1/2" Dugan Garden Path Variant Deep Round Sauce - Lt. P. Opal. (scarce shape; nice opal.)
- ___ 160. **DUGAN NAUTILUS 2 SIDED OPEN SUGAR SIGNED IN SCRIPT - DK. P. OPAL. (RARE AND VERY DESIRABLE; GREAT COLOR)**
- ___ 161. 10 3/4" Dugan Ribbed Interior / Jeweled Heart Exterior Lg. 6 Ruffled Bowl - P. Opal. (roughness on edge; nice opal.)
- ___ 162. 10 3/4" Dugan Ski Star Lg. 6 Ruffled Bowl with Compass Exterior - P. Opal. (nice color and irid.)
- ___ 163. 5 3/4" Dugan Cherries 8 Ruffled Sauce with Jeweled Heart Exterior - Dk. P. Opal. (super color)
- ___ 164. Dugan Holly Whirl Tri-Cornered Handled Gravy Boat - P. Opal. (nice opal.)
- ___ 165. 6 3/4" Dugan Raindrops Domed 10 Ruffled Bowl - Dk. P. Opal. (super overlay and opal.)
- ___ 166. Dugan Stippled Petals Domed 10 Ruffled Bowl - Dk. P. Opal. (nice color and opal.)
- ___ 167. Dugan Dogwood Sprays Domed 10 Ruffled Bowl - Dk. Opal. (nice color and opal.)
- ___ 168. 7 3/4" Dugan Caroline Deep Round Bowl with Tight Crimped Edge - Lt. P. Opal.
- ___ 169. 8" Tall Dugan Twigs Swung Bud Vase - Pur. (nice color and irid.)
- ___ 170. 9" Tall Dugan Lined Lattice Swung Vase - White (nice frosty color and irid.)
- ___ 171. Dugan Dahlia ftd. Spooner - White (scarce item; frosty and nice)
- ___ 172. Dugan Constellation Stemmed 6 Ruffled Compote - White (scarce; nice irid.)
- ___ 173. Dugan Constellation Stemmed 6 Ruffled Compote - Mari. (very scarce color and nice)
- ___ 174. 9" Dugan Pony Low 6 Ruffled Bowl - Mari. (radium finish - nice)
- ___ 175. Dugan Persian Garden Lg. Ruffled Fruit Bowl Top Only - Pur. (cracked; but still a very attractive shelf piece)
- ___ 176. Dugan Question Mark ftd. Plate - Pur. (damaged base but scarce and nice)
- ___ 177. Dugan Cherry Wreath 5 pc. Oval Berry Set - Pur. (nice set; small bowls are scarce)
- ___ 178. Dugan Beaded Shell Handled Mug - Pur. (silvery irid.)
- ___ 178A Dugan Heavy Iris Tumbler - Pur. (nice color and irid.)
- ___ 179. Dugan Heavy Iris Tumbler - Pur. (cracked)
- ___ 180. Dugan Circle Scroll Jack-in-Pulpit Hat from Tumbler - Pur. (pattern roughness, but scarce)
- ___ 181. Dugan Grape Delight ftd. Ruffled Rose Bowl - Pur. (nice color; pretty good feet)
- ___ 182. Dugan Grape Delight ftd. Nut Bowl - Blue (nice satiny finish)
- ___ 183. Dugan Dogwood Sprays Domed 10 Ruffled Bowl - Pur. (scarce color; has some flakes)
- ___ 183A **DUGAN FLOWERS AND FRAMES DOMED 10 RUFFLED BOWL - PUR. (SUPER COLOR AND IRID.; VERY DESIRABLE)**
- ___ 184. **9" DUGAN ROUND UP LOW RUFFLED BOWL / PLATE - BLUE (SCARCE; NICE SATINY FINISH)**
- ___ 184A **DUGAN paneled cherries ftd. tri-cornered crimped edge bowl - Pur. (SUPER BRIGHT COLOR AND IRID.; GREAT ITEM AND REALLY NICE; SMALL CHIP ON ONE OF THE FEET)**
- ___ 185. **DUGAN paneled cherries ftd. tri-cornered crimped edge bowl - Pur. (VERY SCARCE SHAPE FOR THIS ITEM; SATINY IRID.)**
- ___ 186. Dugan Maple Leaf 4 pc. Table Set - Dk. Mari. (scarce set; sugar lid has small flake)
- ___ 187. **10 1/2" DUGAN COSMOS VARIANT CHOP PLATE - MARI. (VERY SCARCE ITEM; NICE SATINY FINISH)**
- ___ 188. Dugan Jeweled Heart Tumbler - Dk. Mari. (very scarce; nice dark color and irid.)
- ___ 189. Dugan Rambler Rose Tumbler - Mari.
- ___ 190. **DUGAN WREATH OF ROSES ROSE BOWL - LIME GREEN / MARI. (HAS ODD BASE GLASS TINT; VERY SCARCE- NICE COLOR)**
- ___ 191. 8 1/2" Dugan Fanciful Low Ruffled Bowl / Plate - Lt. Mari. (epoxied point)
- ___ 192. 8 3/4" Dugan Round Up low Ruffled Bowl / Plate - Mari. (has a sorta radium finish - a bit unusual)
- ___ 193. 8 1/2" Dugan Apple Blossom Twigs Low Ruffled Bowl / Plate - Mari. (has a satiny finish; scarce)
- ___ 194. 6" Dugan Persian Garden Flat Plate - Mari. (nice color)
- ___ 195. Dugan Grape Arbor / Inverted Fan and Feather Exterior ftd. Deep Round Bowl - Mari. (scarce item; nice color and satiny finish)
- ___ 196. (2) Dugan Mary Ann Handled Vases - Mari. (desirable items; selling choice)
- ___ 197. Dugan Vintage Grape Stemmed Wine Glass - Amy. (nice irid.)
- ___ 198. Fenton 10 Mums Tumbler - Blue (nice irid.)
- ___ 199. Tumble Up - 2 pc. - Mari. (scarce item)

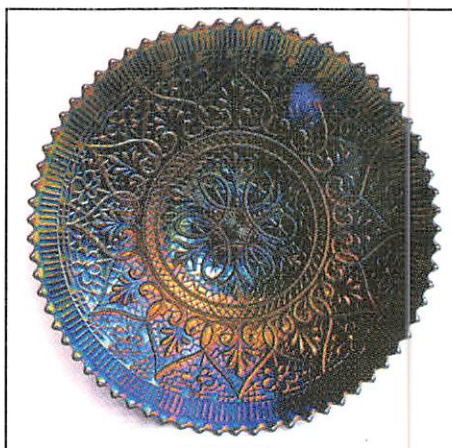
- ___ 200. **U.S. GLASS PEACOCK LAMP BASE - MARI. (VERY SCARCE AND VERY DESIRABLE; SUPER IRID.)**
- ___ 201. **U.S. GLASS COSMOS AND CANE 4 SIDED SQUARE IND. BERRY BOWL - HONEY AMBER. (VERY RARE SHAPE FOR THIS ITEM; REALLY NEAT)**
- ___ 202. U.S. Glass 1909 - Louisville Shriners Champagne Glass - Clear (scarce with the original label)
- ___ 203. U.S. Glass 1910 New Orleans Shriners Champagne Glass - Clear (nice decoration)
- ___ 204. U.S. Glass 1911 Rochester Shriners Champagne Glass - Clear (nice decoration)
- ___ 205. **WESTMORELAND CAROLINA DOGWOOD 6 RUFFLED BOWL - DK. MARI. / MILK GLASS (SUPER EXAMPLE; HAS MANUF. EDGE SEPARATION)**
- ___ 206. Westmoreland Wild Berry Covered Dresser Jar - Lt. Mari. (very scarce novelty - tough to find)
- ___ 208. Westmoreland Orange Peel Punch Base only - Dk. Mari. (scarce part)
- ___ 209. Westmoreland Pearly Dots Stemmed Ruffled Compote - P. Opal. (scarce; nice opal)
- ___ 210. Jenkins Cut Flowers Lg. Cylinder Vase - Mari. (nice big hunk of glass)
- ___ 211. Fostoria Brocaded Palms Round Handled Candy Dish - Ice Green (nice irid.; attractive)
- ___ 212. **FENTON STRETCH COVERED DRESSER JAR - WISTERIA (RARE AND DESIRABLE; BOTTOM RIM OF LID HAS SOME ROUGHNESS)**
- ___ 213. Fenton Stretch Apothecary Jar and Lid - Listerine - Mari. (scarce; desirable)
- ___ 214. Fenton Stretch Apothecary Jar and Lid - Peroxide - Mari. (another scarce item; nice)
- ___ 215. **FENTON KITTENS CUP AND SAUCER - DK. MARI. (SCARCE AND VERY DESIRABLE; NICE COLOR)**
- ___ 216. Fenton Kittens Odd Ruffled Toothpick Holder - Mari. (scarce; desirable; nice color)
- ___ 217. Fenton Kittens Cereal Bowl - Dk. Mari. (scarce shape; really nice color and detail)
- ___ 218. Fenton Kittens 4 Sided Bowl - Mari. (scarce; nice color with typical detail)
- ___ 219. Fenton Kittens 6 Ruffled Bowl - Lt. Mari. (scarce; light color and irid.)
- ___ 220. **9 1/4" FENTON HEART & VINE FLAT PLATE - BLUE (A BEAUTY WITH GREAT IRID. AND DETAIL; VERY ATTRACTIVE)**
- ___ 221. 9 1/2" Fenton Holly Flat Plate - Blue (odd spot on one edge; small chip; nice color)
- ___ 222. 7 1/2" Fenton Vintage Grape Flat Plate - Blue (silvery satiny irid.; still sorta scarce)
- ___ 223. **FENTON THISTLE FTD. OVAL BANANA BOAT - DK. MARI. (SCARCE; NICE DARK COLOR AND IRID.)**
- ___ 224. Fenton Stream of Hearts Crimped Edge Stemmed Ruffled Compote - Mari. (scarce pattern)
- ___ 225. **6" FENTON PEACOCK TAIL DEEP ROUND BOWL WITH HORLACHER ADVERTISING - AMY. (SCARCE IN THIS COLOR; A NICE AFFORDABLE ADVERTISING ITEM)**
- ___ 226. 9 1/4" Fenton Little Flowers Lg. Ice Cream Shaped Bowl - Blue (very desirable shape; has really nice irid - super!)
- ___ 227. 9" Fenton Heart & Vine 6 Ruffled Bowl - Blue (scarce; nice irid.)
- ___ 228. 8 3/4" Fenton Peacock & Grape 8 Ruffled Bowl - Blue (nice satiny finish)
- ___ 229. 10" Tall Fenton Knotted Beads Swung Vase - Blue (nice color and irid.)
- ___ 230. 9" Fenton Peacock at the Urn 8 Ruffled Bowl - Blue (has really nice irid. for this popular pattern)
- ___ 231. Fenton Lotus & Poinsettia ftd. Ruffled Sauce - Blue (nice color)
- ___ 232. (2) Fenton Little Fishes ftd. Ruffled Sauces - Mari. (selling choice)
- ___ 233. 9" Fenton G & C Spatula ftd. Plate - Amy. (very scarce item; nice satiny finish)
- ___ 234. 8 3/4" Fenton Holly 8 Ruffled Bowl - Dk. Mari. (super color)
- ___ 235. Fenton Horsehead Medallion ftd. Rose Bowl - Dk. Mari. (scarce and desirable; nice irid. and detail)
- ___ 236. Fenton Persian Medallion Rose Bowl - Dk. Mari. (great color and irid.)
- ___ 237. Fenton Two Flowers Spatula ftd. Rose Bowl - Blue (very scarce and underpriced; nice!)
- ___ 238. 8 1/2" Fenton Heart & Vine Bowl with 3 in 1 Edge - Green (nice color and irid.)
- ___ 239. 8 3/4" Fenton Thistle Bowl with 3 in 1 Edge - Green (nice satiny finish)
- ___ 240. **9 1/4" FENTON PERSIAN MEDALLION PLATE - BLUE (SCARCE AND DESIRABLE; NICE AVERAGE COLOR AND IRID.)**
- ___ 241. 6" Fenton Persian Medallion Plate - Mari. (nice color)
- ___ 242. 6" Fenton Pine Cone Plate with Wide Panel Ext. - Mari. (nice color)
- ___ 243. **6" FENTON "SEASON'S GREETINGS - EAT PARADISE SODAS" ADVERTISING PLATE - AMY. (VERY SCARCE AND DESIRABLE; HAS SUPER DETAIL; VERY ATTRACTIVE)**
- ___ 244. **7 1/2 - 7 3/4" FENTON HORSEHEAD MEDALLION FLAT PLATE - MARI. (VERY SCARCE; NICE COLOR AND EXCELLENT DETAIL)**
- ___ 245. **FENTON FLORAL & GRAPE 5 PC. BULBOUS WATER SET - BLUE (SCARCE; NICE COLOR AND IRID.)**
- ___ 246. Fenton Birds & Cherries 2 Sided Handled Card Tray - Blue (nice color)
- ___ 247. Fenton Birds & Cherries 2 Sided Handled Card Tray - Dk. Mari. (super irid.)
- ___ 248. Fenton Birds & Cherries 4 Sided Handled Bon Bon - Dk. Mari. (nice color)
- ___ 249. 9" Fenton Vintage Grape Deep Round Flared Master Berry Bowl - Dk. Mari. (really nice irid.)
- ___ 250. 7" Fenton Peacock & Dahlia 6 Ruffled Bowl - Aqua / Mari. (scarce pastel with nice overlay)
- ___ 251. 9 1/2" Fenton Three Fruits 12 sided Plate - Mari. (scarce; satiny finish)
- ___ 252. **FENTON VINTAGE GRAPE SMALL SIZE SINGLE LILY EPERGNE - MARI. (SCARCE IN THIS COLOR; NICE IRID.)**
- ___ 253. 10 1/4" Fenton Stag & Holly Lg. Ball ftd. Ice Cream Shaped Bowl - Mari. (nice satiny finish)
- ___ 254. Fenton Butterfly & Berry 4 pc. Table Set - Mari. (scarce set to find anymore; well matched)
- ___ 255. **FENTON ROSE WREATH PUNCH BOWL AND BASE WITH PERSIAN MEDALLION INTERIOR - AMY. (VERY SCARCE AND VERY DESIRABLE; SUPER COLOR AND IRID. - A VERY ATTRACTIVE ITEM)**
- ___ 256. Fenton Mikado Lg. Stemmed Flared Compote - Mari. (scarce; nice satiny example)
- ___ 257. Fenton Illusion 4 Sided 2 Handled Bon Bon - Mari. (scarce pattern)
- ___ 258. Fenton Two Fruits Round Divided Handled Bon Bon - Mari. (scarce pattern)
- ___ 259. Fenton Prism Band with Enameled Decorated Iris Tumbler - Blue (scarce color; nice decoration)
- ___ 260. Fenton Enameled Decorated Lotus Flower Cannonball Water Pitcher - Dk. Mari. (scarce; super color)
- ___ 261. Fenton Enameled Decorated Tumbler for above Pitcher - Dk. Mari. (nice color and irid.)
- ___ 262. **9 3/4" TALL FENTON FINE RIB SWUNG VASE - RED (GREAT RED COLOR; IRID. A BIT SILVERY)**
- ___ 262A **17 1/2 - 18" TALL FENTON RUSTIC SWUNG FUNERAL VASE - DK. MARI. (RARE AND DESIRABLE; NICE COLOR AND DARK IRID.; VERY NICE EXAMPLE)**
- ___ 263. Fenton 2 Row Open Jack-in-Pulpit Hat - Red (cracked)

- ___264. Fenton Fantail / Butterfly & Berry ftd. Round Berry Bowl - Blue (nice color)
- ___265. Fenton Wreath of Roses Stemmed Handled Bon Bon - Green
- ___266. Imperial Six Sided Candlestick - Crystal (scarce crystal item; a pair would be nice)
- ___267. Cambridge Inverted Thistle Oblong Handled Basket - Crystal (scarce item - would be neat iridized)
- ___268. 8 1/2-9" Fenton Chrysanthemum 8 Ruffled Bowl - Crystal Pink Depression (scarce carnival pattern in this color)
- ___269. 8 1/2-9" Tall N Drapery Variant Swung Vase - Custard / Nutmeg (scarce; nice nutmeg decoration)
- ___270. Fenton (?) Pastel Swan Master Salt - Vaseline Opal. (not carnival; opal. on edge; scarce with great color)
- ___271. U.S. Glass (Pattern ?) Stemmed Wine Glass- Stenciled - "Souvenir of Lake Eden, Vt." - Mari. (scarce souvenir item - haven't seen this before)
- ___272. U.S. Glass (?) Kings Crown Stemmed Wine Glass - Odd Green Flash (unusual flashed color for this item - really different)
- ___273. (2) Maker (?) Stemmed Etched Floral Cordials - Smokey / Blue Flash (really scarce; selling choice; neat miniatures)
- ___274. U.S. Glass Heart Band Tall Handled Creamer - "Souvenir of New York" - Green Flash (nice souvenir item)
- ___275. **N GOOD LUCK STIPPLED BOWL WITH PIE CRUST EDGE AND UNIRIDIZED NARROW BASE AND RIBBED EXTERIOR - RENNINGER BLUE (EXTREMELY RARE COLOR FOR THIS ITEM; NICE GOLD AND RED HIGHLIGHTS)**
- ___276. **N ROSE SHOW VARIANT 8 RUFFLED BOWL WITH UNIRIDIZED NARROW BASE AND RIBBED EXTERIOR - RENNINGER BLUE (RARE AND VERY DESIRABLE; NICE AVERAGE IRID. WITH GOLD HIGHLIGHTS; TOUGH PATTERN TO FIND)**
- ___277. **9 1/2 - 10" TALL N DIAMOND POINT SWUNG VASE - BLUE / ELEC. BLUE (VERY SCARCE; HAS REALLY NICE BLUE HIGHLIGHTS; PRETTY ATTRACTIVE PIECE)**
- ___278. 10" Tall N Thin Rib Swung Vase - Olive Green (nice color and irid.)
- ___279. N Eight Sided Handled Bushel Basket - Dk. Mari. (very scarce; nice dark color with satiny finish)
- ___280. **N ROSE SHOW RUFFLED BOWL - DK. MARI. (VERY SCARCE AND DESIRABLE; NICE DARK COLOR AND PRETTY MUCH IN PERFECT SHAPE)**
- ___280A **N PEACOCKS BOWL WITH PIE CRUST EDGE AND PLAIN EXTERIOR - WHITE (RARE AND DESIRABLE; NICE FROSTY EXAMPLE; NICE IRID.)**
- ___281. **N LEAF & BEADS FTD. ROSE BOWL - WHITE (RARE AND VERY DESIRABLE; GETTING TOUGH TO FIND; NICE AND FROSTY WITH GREAT IRID.)**
- ___282. N Leaf & Beads ftd. Rose Bowl - Dk. Mari. very desirable; nice pink and blue highlights)
- ___283. 13 - 14" Tall Fenton Diamond Rib Tall Swung Vase - Amy. (one of the tallest examples of this pattern; really bright multi-colored irid.)
- ___284. 7 1/2 - 8" Tall Fenton Diamond Rib Squatty Swung Vase - Blue (one of the shorter examples you'll find; satiny finish)
- ___285. **FENTON STRETCH ERA MELON RIBBED BASED 7 PC. ETCHED JUICE SET WITH BLUE HANDLED PITCHER - DK. MARI. (ONE OF THE MOST DIFFICULT SETS TO FIND COMPLETE; VERY NICE - PERFECT AND RARE!)**
- ___286. **FENTON VINTAGE GRAPE FERNERY WHIMSEY 3 FTD. LOW 6 RUFFLED BOWL - AMY. (VERY RARE SHAPE FOR THIS ITEM; ATTRACTIVE SATINY FINISH; NICE COLOR AND IRID.)**
- ___287. **FENTON TWO ROW OPEN EDGE 2 SIDED HAT - GREEN (VERY ATTRACTIVE EXAMPLE OF THIS VERY SCARCE COLOR; TOUGH TO FIND)**
- ___288. 8 1/2" Fenton Holly Ice Cream Shaped Bowl - Odd Green / Mari. Overlay (very scarce base color; if you collect this pattern and shape, you may not have this example)
- ___288A Fenton Holly Ice Cream Shaped Bowl - Green (very scarce and desirable)
- ___289. (2) Fenton Wreath of Roses Handled Punch Cups with Persian Medallion Interior - Amy. (very nice example; would go well with the previous Punch Bowl in this auction)
- ___290. **8 1/2-9" FENTON LEAF CHAIN 6 RUFFLED BOWL WITH BERRY EXTERIOR - AMY. (VERY RARE COLOR FOR THIS ITEM AND THIS EXAMPLE IS VERY ATTRACTIVE)**
- ___291. **6" FENTON LOTUS AND POINSETTIA 6 RUFFLED SAUCE - WITH NO FEET - MARI. (VERY SCARCE EXAMPLE WITH NO FEET; TRY AND FIND ONE FOR SALE!)**
- ___292. SURPRISE!!
- ___293. 9 1/2 - 10" Tall Maker (?) Ribbed Drapery Variant (?) Swung Vase - Mari. (not sure of maker; have seen this pattern in Crystal but don't recall an iridized Marigold example; different)
- ___294. Imperial (?) Pair Etched Floral Light Shades - Satiny with Etched Mari. Overlay (an unusual and different pair; very attractive)
- ___295. **IMPERIAL OCTAGON SMALL SIZE WATER PITCHER - PUR. (RARE AND VERY DESIRABLE; WE'VE SOLD 2 OTHER EXAMPLES THIS YEAR AND ALTHOUGH THIS MAY RANK 3RD, IT'S STILL AN EXCELLENT EXAMPLE AND PERFECT!)**
- ___296. (2) Dugan Many Fruits Handled Punch Cups - Blue (very scarce color for this item; selling so much each - choice)
- ___297. **DUGAN DOUBLE STEM ROSE DOMED 10 RUFFLED BOWL - CELESTE BLUE (RARE AND DESIRABLE; REALLY NICE EXAMPLE THAT MAY HAVE A COUPLE SMALLER FLAKES ON IT'S EDGE)**
- ___298. Dugan Circle Scroll Jack- in-Pulpit Hat from Tumbler - Mari.
- ___299. Dugan Thumbprint Tri Cornered Crimped Edge Stemmed Compote - P. Opal. (very scarce shape for this item - has nice opal.)
- ___300. Dugan Fishnet Epergne Lily only with Tri Cornered Crimped Edge - P. Opal. (very tough part if you're looking for one; nice color and opal.)

CHECK OUT BURNS AUCTION SERVICE ON THE WEB!

Visit our new Web site for information on upcoming auctions, complete auction listings and photos of auction highlights. You can e-mail your bids or requests for information.

<http://www.woodsland.com/woodsland/burnsauction> email: brnzauctsv@aol.com



**FOR THE RESULTS OF THIS OR
ANY BURNS AUCTION SERVICE
AUCTION SEND A SASE AND
\$3.00 (INCLUDE NAME OR
DATE OF AUCTION) TO:**

**EMMA TILTON
221 N. PLUM ST.
GNADENHUTTEN, OH 44629**

