

BURNS

AUCTION SERVICE

THE STREMMING AUCTION

Friday & Saturday,
August 21 & 22, 1998

Friday: Auction - 4:00 pm,
preview - 12:00 pm (lots 1 - 300)

Saturday: Auction - 9:00 am,
preview - 8:00 am (Lots 301 - end)

at the

Holiday Inn - Select

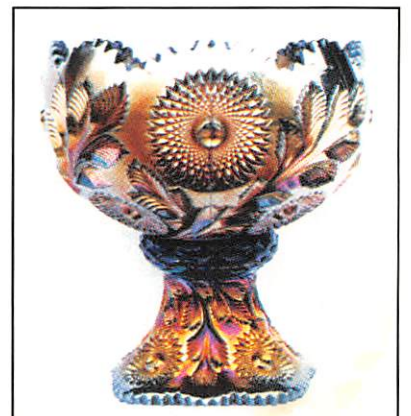
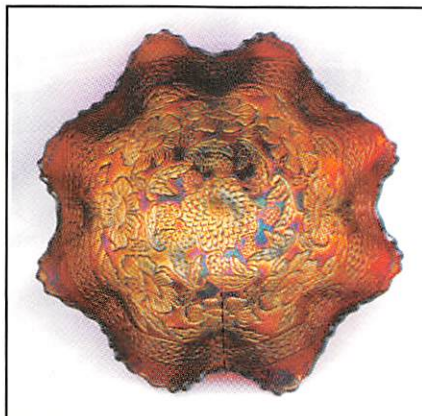
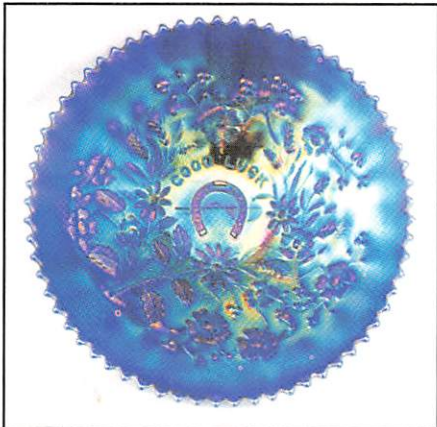
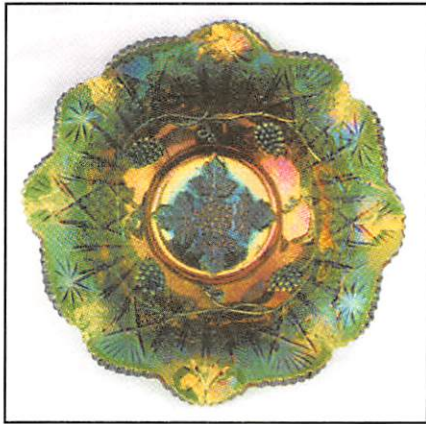
Strongsville Southpark Center

15471 Royalton Rd., Strongsville, OH 44136

(440) 238-8800

Located just off Exit 231 of I-71, just south of the Ohio Turnpike

Licensed and Bonded by the Department of Commerce in Favor of the State of Ohio



This is our personal invitation to what I consider our "Auction of the Year". It is my pleasure to present at auction, to the highest bidder, the collection of Robert and Betty Stremming from Illinois. I've known Robert longer than I can remember and loves his Rose Bowls - he no doubt has one of this country's best selections of Rose Bowls. And I'll tell ya, when I got to his home I discovered he doesn't collect just Rose Bowls. Inside was one of those collections we auctioneers live for. This brochure will vouch for that. If you should decide to attend, you'll be doing yourself a BIG favor. Don't miss it!

The Holiday Inn - Select of Strongsville, Ohio will host the event. It's located just off Exit 231 of I-71, just south of the Ohio Turnpike. The motel has a shuttle service from Cleveland Hopkins Airport which is 10 - 15 miles north on I-71.

We have a number of rooms available in our block but reservations with our special rate are due by August 13, 1998. You can call the motel direct at (440) 238-8800.

There is a Red Roof right next door if you so choose. You can call them at 1-800-THE ROOF or (440) 238-0170. Whatever you decide, do it soon. It should be a very interesting weekend.

Mail, Email, Fax and Phone Bids are due by Tuesday, August 18, 1998.

Burns Auction Service

Tom Burns
P.O. Box 608
Bath, New York 14810
(607) 776-7942

Bill Richards
44 Water St., Poland, OH 44514
(330) 757-2001
FAX (330) 757-4917

Bill Richards, III
2253 Country Lane
Poland, OH 44514
(330) 755-2620

1. No deposit required. Bidders will take full responsibility to honor any and all bids we execute for them. Payment in full plus postage and handling required after notification and before we ship any item to them.
2. Items are bid on in perfect condition with average or above average iridescence OR as listed in the brochures. Bids will not be carried out when damage on an item has been found during the auction. **PEOPLE PRESENT AT AUCTION ARE RESPONSIBLE FOR FINDING ANY PINHEADS, WEAR, SPOTTINESS, MANUFACTURER'S DEFECTS OR ANY OTHER MINOR FLAWS, ETC.**
3. Successful bidders will be notified by collect call from the auctioneer (**so be sure to include phone number**).
4. Phone inquiries about the glass or any other questions are welcome.
5. If you have some other person at the auction bidding for you, they must pay for the item before taking it.
6. Any terms or conditions given the day of the auction will supercede any previously published information.
7. Mail, Email, FAX and/or phone bids are due by Tuesday, August 18, 1998.

- | | |
|---|---|
| <p>___ 1. N Peacock at the Fountain Handled Punch Cup - White (perfect and pretty - nice irid.)</p> <p>___ 2. N Peacock at the Fountain Handled Punch Cup - Blue (scarce; nice gold highlights)</p> <p>___ 3. N Acorn Burr Handled Punch Cup - Blue (very rare item and a beauty)</p> <p>___ 4. N Daisy and Plume / Fern Interior Stemmed Ruffled Compote - Green (scarce; nice irid.)</p> <p>___ 5. N GOOD LUCK PLATE WITH RIBBED EXTERIOR - ELEC. BLUE (EXTREMELY RARE AND VERY DESIRABLE; HAS BRILLIANT BLUE FINISH; A COLLECTOR'S DELIGHT)</p> <p>___ 6. N Good Luck Bowl with Pie Crust Edge and Ribbed Exterior - Horehound (I've never seen another example; small chip on one point)</p> <p>___ 7. N Good Luck Stippled Bowl with Pie Crust Edge and Ribbed Exterior - Pastel Mari. (has narrow base - nice pink highlights)</p> <p>___ 8. N Good Luck Bowl with Pie Crust Edge and Ribbed Exterior - Dk. Mari. (excellent example; nice dark color and irid.)</p> <p>___ 9. N BUTTERFLY 2 HANDLED BON BON WITH PLAIN EXTERIOR - SMOKE (ONE OF ONLY 2 I'VE HEARD OF - REALLY NICE)</p> <p>___ 10. N HEART AND FLOWERS PLATE WITH RIBBED EXTERIOR - WHITE (RARE AND DESIRABLE; A BEAUTY; A BIT CROOKED)</p> | <p>___ 11. N HEART AND FLOWERS PLATE WITH RIBBED EXTERIOR - DK. MARI. (RARE AND DESIRABLE; PERFECT WITH NICE COLOR)</p> <p>___ 12. N Heart and Flowers 8 Ruffled Bowl with Ribbed Exterior - Ice Blue (scarce; nice average color and irid.)</p> <p>___ 13. N Heart and Flowers 8 Ruffled Bowl with Ribbed Exterior - White (scarce; average with goldish irid.)</p> <p>___ 14. N HEART AND FLOWERS 8 RUFFLED BOWL WITH RIBBED EXTERIOR - MARI. (SCARCE; AVERAGE COLOR WITH PINK AND BLUE HIGHLIGHTS)</p> <p>___ 15. N HEART AND FLOWERS STEMMED RUFFLED COMPOTE WITH RIBBED EXTERIOR - RENNINGER BLUE (VERY RARE ITEM WITH GREAT COLOR AND IRID.; A SUPER EXAMPLE)</p> <p>___ 16. N Heart and Flowers Stemmed Ruffled Compote with Ribbed Exterior - Aqua Opal. (super example with very small flake on edge of base)</p> <p>___ 17. N Heart and Flowers Stemmed Ruffled Compote with Ribbed Exterior - White (scarce item; irid. a bit light)</p> <p>___ 18. N Heart and Flowers Stemmed Ruffled Compote with Ribbed Exterior - Mari. (scarce; really nice irid. - has yellows, pinks and blues)</p> |
|---|---|

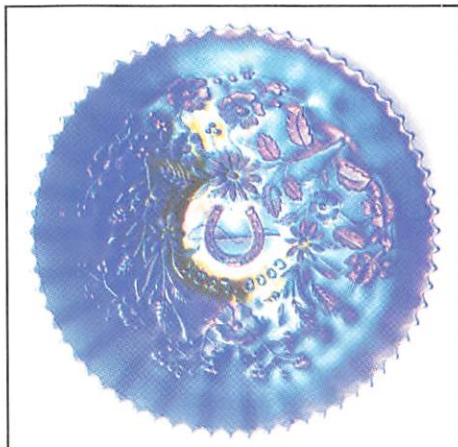
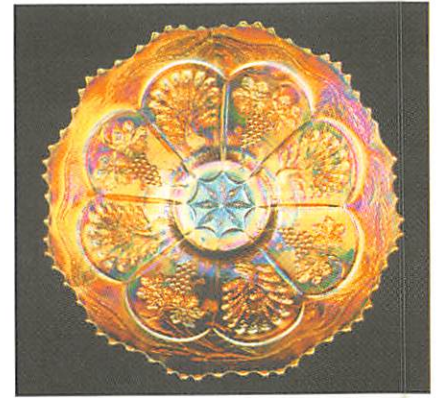
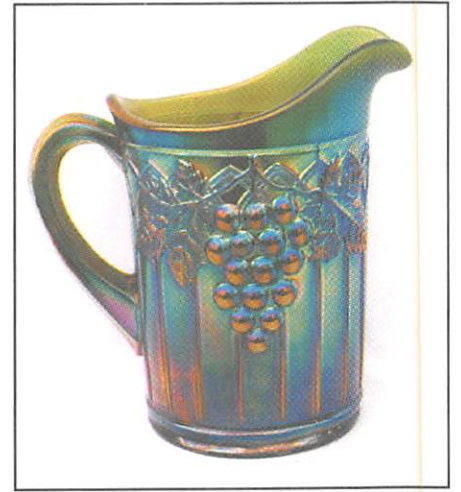
19. N Embroidered Mums 8 Ruffled Bowl with Ribbed Exterior - Blue (scarce and desirable; small flake on tip of one point)
20. **N EMBROIDERED MUMS 8 RUFFLED BOWL WITH RIBBED EXTERIOR - DK. MARI. (SUPER EXAMPLE - ONE OF THE BEST I'VE SEEN)**
21. **N DANDELION MUG / KNIGHTS TEMPLAR ADV. - ICE BLUE (RARE; DESIRABLE; NICE COLOR AND IRID.)**
22. **N DANDELION HANDLED MUG - BLUE (RARE AND DESIRABLE COLOR; SUPER EXAMPLE)**
23. **N DANDELION HANDLED MUG - BLUE OPAL. (NOT CARNIVAL; GREAT OPAL.; VERY RARE)**
24. **N DANDELION HANDLED MUG - AQUA OPAL. (RARE; AVERAGE IRID.; OPAL. MAINLY ON HANDLE)**
25. **N DANDELION HANDLED MUG - DK. MARI. (FANTASTIC EXAMPLE; AS DARK AS THEY GET; HAS TINY BUFFED SPOT ON BASE)**
26. N Dandelion Handled Mug - Pur. (silver / gold irid.)
27. **N WIDE PANEL 4 LILY EPERGNE - AMY. (RARE AND DESIRABLE; SATINY AND PERFECT)**
28. **N WIDE PANEL 4 LILY EPERGNE - ICE GREEN (EXTREMELY RARE - SUPER; CENTER LILY AS IS)**
29. **N WIDE PANEL 4 LILY EPERGNE - DK. MARI. (EXCELLENT EXAMPLE; NICE COLOR AND IRID.)**
30. **N RASPBERRY WATER PITCHER - WHITE (VERY RARE AND DESIRABLE; FROSTY WITH NICE IRID.)**
31. **N RASPBERRY WATER PITCHER - GREEN (SCARCE; NICE COLOR AND ABOVE AVERAGE IRID.)**
32. N Raspberry Water Pitcher and 1 Tumbler - Dk. Mari. (about as nice as they get - a beauty!)
33. N Raspberry 7 pc. Water Set - Pur. (very scarce set with satiny irid.)
34. N Wreath of Roses Stippled Handled Bon Bon - Pur. (very scarce; has flake on bottom of base)
35. **N DAISY AND PLUME FTD. ROSE BOWL WITH BERRY INTERIOR - AQUA OPAL. (EXTREMELY RARE; FANTASTIC EXAMPLE - SUPER OPAL.; HAS 2 SMALL CHIPS ON FEET)**
36. **N DAISY AND PLUME FTD. ROSE BOWL WITH BERRY INTERIOR - ICE GREEN (99% PERFECT; GREAT COLOR AND IRID. - NICE)**
37. **N DAISY AND PLUME FTD. ROSE BOWL WITH BERRY INTERIOR - WHITE (RARE, DESIRABLE; HAS SMALL FLAKE ON ONE FOOT)**
38. **N DAISY AND PLUME FTD. ROSE BOWL WITH BERRY INTERIOR - ELEC. BLUE (REALLY TOUGH ITEM; SUPER COLOR; PINHEADS ON FEET)**
39. **N DAISY AND PLUME FTD. ROSE BOWL WITH BERRY INTERIOR - LT. AMY. OR LAVENDER (SUPER ITEM WITH NICE IRID.; PINHEADS ON FEET)**
40. N Daisy and Plume ftd. Rose Bowl with Berry Interior - Pur. (scarce; feet are 99%; nice irid.)
41. **N DAISY AND PLUME FTD. ROSE BOWL WITH BERRY INTERIOR - GREEN (RARE COLOR; ABOUT AS PERFECT AS THEY GET - NICE)**
42. N Daisy and Plume ftd. Rose Bowl with Berry Interior - Dk. Mari. (great color and irid.; may have pinheads)
43. N Daisy and Plume ftd. Rose Bowl with Stippled Rays Interior - Green (scarce; nice irid.; pretty good feet)
44. N Daisy and Plume ftd. Rose Bowl with Stippled Rays Interior - Mari. (nice color and irid.)
45. **N DAISY AND PLUME FTD. ROSE BOWL WITH PLAIN INTERIOR - AMBER (ONLY ONE WE'VE HEARD OF IN THIS COLOR; FILLED OPEN BUBBLE ON ONE TOE)**
46. **N DANDELION 7 PC. TANKARD WATER SET WITH RIBBED INTERIOR - PUR. (ABSOLUTELY SUPER SET - GREAT COLOR AND IRID.)**
47. N Dandelion Tumbler - Green (nice average color and irid.)
48. N Dandelion Tumbler - Dk. Mari. (super color and irid.)
49. **N ORIENTAL POPPY TUMBLER - ICE BLUE (NICE DARK COLOR AND PASTEL IRID.)**
50. **N ORIENTAL POPPY 7 PC. TANKARD WATER SET - GREEN (VERY RARE AND DESIRABLE; PITCHER IS NICE)**
51. **N ORIENTAL POPPY 7 PC. TANKARD WATER SET - DK. MARI. (SCARCE AND DESIRABLE; PITCHER HAS RIBBED INTERIOR)**
52. N Oriental Poppy Tumbler - Pur. (nice with reds and blues)
53. N Grape Arbor Tumbler - Blue (rare and desirable; etched - Sept. 26. 1914)
54. N Grape Arbor Tumbler - Ice Green (rare item; has large flake on base)
55. **N PEACH 7 PC. WATER SET - ELEC. BLUE (SUPER, SUPER SET; GREAT COLOR AND IRID.)**
56. N Peach Tumbler - White (scarce item with light gold trim)
57. **N PEACOCK AT THE FOUNTAIN 7 PC. WATER SET - PUR. (VERY SCARCE SET WITH EXCELLENT COLOR AND IRID.)**
58. (2) N Peacock at the Fountain Tumblers - Elec. Blue (nice color; great irid.; selling choice)
59. **N PEACOCK AT THE FOUNTAIN STEMMED RUFFLED COMPOTE - WHITE (RARE AND DESIRABLE; IRID. IS TYPICALLY LIGHT)**
60. **N PEACOCK AT THE FOUNTAIN FTD. RUFFLED FRUIT BOWL - ELEC. BLUE (ABSOLUTELY SUPER COLOR AND IRID.; A REALLY NICE EXAMPLE)**
61. **N PEACOCK AT THE FOUNTAIN 8 PC. PUNCH SET - DK. MARI. (NICE COLOR; COMPLETE AND PERFECT)**
62. N Peacock at the Fountain Handled Punch Cup - Mari. (nice color)
63. **N PEACOCKS STIPPLED PLATE WITH RIBBED EXTERIOR - ELEC. BLUE (A SUPER, SUPER ITEM WITH GREAT HIGHLIGHTS)**
64. **N PEACOCKS PLATE WITH RIBBED EXTERIOR - GREEN (VERY RARE AND DESIRABLE; NICE)**
65. **N PEACOCKS PLATE WITH RIBBED EXTERIOR - PUR. (VERY SCARCE; NICE BLuish IRID.)**

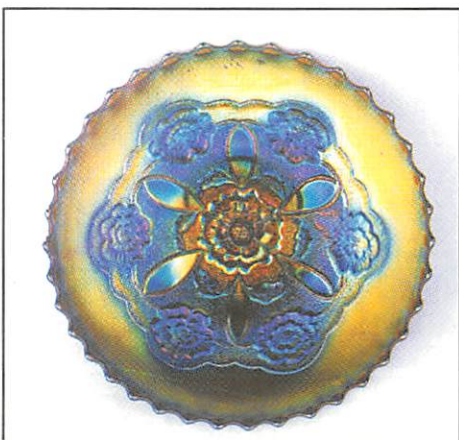
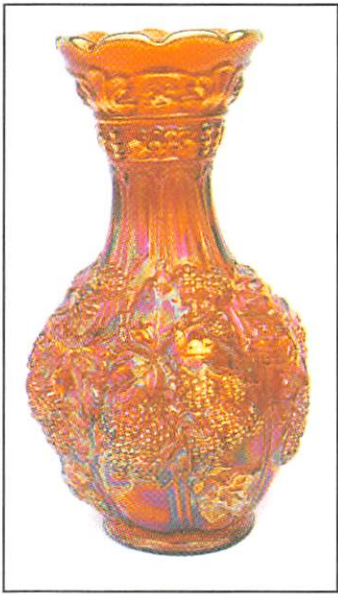
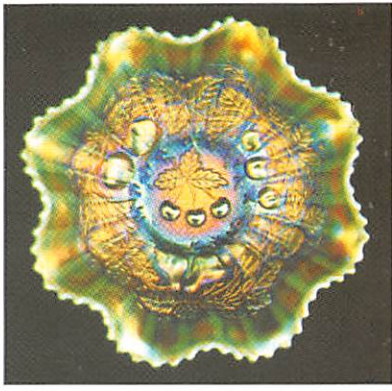
66. **N PEACOCKS PLATE WITH RIBBED EXTERIOR - ICE BLUE (RARE AND DESIRABLE; FLAT WITH NICE IRID.)**
67. **N PEACOCKS PLATE WITH RIBBED EXTERIOR - WHITE (EXCELLENT EXAMPLE; GREAT IRID. - NICE)**
68. **N PEACOCKS PLATE WITH RIBBED EXTERIOR - PASTEL MARI. (VERY SCARCE AND HAS NICE IRID. - ATTRACTIVE)**
69. **N PEACOCKS RUFFLED BOWL WITH RIBBED EXTERIOR - ICE GREEN (RARE AND DESIRABLE; NICE IRID. - TOUGH!)**
70. **N PEACOCK AT THE URN LARGE ICE CREAM BOWL - ICE BLUE (RARE AND DESIRABLE; SILVERY / GOLD IRID.)**
71. **N PEACOCK AT THE URN LARGE ICE CREAM BOWL - WHITE (SUPER EXAMPLE; GREAT PINK AND BLUE IRID.)**
72. **N PEACOCK AT THE URN LARGE ICE CREAM BOWL - DK. MARI. (REAL NICE EXAMPLE; DARK AND ATTRACTIVE)**
73. **N Strawberry Plate with Basketweave Exterior - Amy. (nice color and irid.; satiny)**
74. **N Strawberry Ruffled Bowl with Plain Exterior - Pur. (super color and excellent irid.)**
75. **N ROSE SHOW PLATE - DK. ICE GREEN (WANTS TO BE LIME ICE GREEN - SUPER COLOR AND IRID.; A REAL BEAUTY)**
76. **N ROSE SHOW PLATE - WHITE (EXCEPTIONAL EXAMPLE WITH BLUE HIGHLIGHTS)**
77. **N ROSE SHOW PLATE - GREEN (VERY RARE AND DESIRABLE; IRID. LIGHT IN CENTER)**
78. **N ROSE SHOW PLATE - DK. MARI. (HAS TO BE ONE OF THE BETTER EXAMPLES - FANTASTIC)**
79. **N ROSE SHOW PLATE - BLUE (RARE AND DESIRABLE; HAS RED, GOLD AND BLUE IRID.)**
80. **N ROSE SHOW RUFFLED BOWL - ICE BLUE (RARE AND DESIRABLE; HAS GOLDISH HIGHLIGHTS)**
81. **N ROSE SHOW RUFFLED BOWL - AQUA OPAL. (A REALLY NICE PASTEL EXAMPLE; ATTRACTIVE)**
82. **N ROSE SHOW RUFFLED BOWL - WHITE (SUPER IRID. ON A TOUGH ITEM)**
83. **N POPPY SHOW PLATE - ICE BLUE VERY RARE AND DESIRABLE; NICE IRID.)**
84. **N POPPY SHOW PLATE - DK. MARI. (ALMOST WANTS TO BE A HANDGRIP - NICE IRID.)**
85. **N G & C STIPPLED TABLE SIZED 8 PC. PUNCH SET - GREEN WITH AQUA CUPS - SELLING IT THE WAY THEY FOUND IT - SUPER RARE)**
86. **(6) N G & C Stippled Punch Cups - Green (selling so much each for the set)**
87. **N G & C Table Size Punch Bowl and Base - Pur. (very nice example; lots of blue highlights)**
88. **(2) N G & C Candlesticks - Pur. (nice matched pair - selling for one money)**
89. **N G & C Candlestick - Green (really nice example)**
90. **N G & C 12 PC. MASTER PUNCH SET - PUR. (SUPER COLOR AND IRID. - GREAT LOOKING SET)**
91. **N G & C FERNERY WITH ORIGINAL CRYSTAL GLASS INSERT - PUR. (AN UNREAL ITEM WITH THE INSERT - THE FIRST I'VE SEEN; COUPLE OF NICKS ON EDGE)**
92. **N G & C FTD. TURNED IN CENTERPIECE BOWL - PUR. (RARE, DESIRABLE; NICE COLOR AND IRID.)**
93. **9" N G & C Plate with Basketweave Exterior - Pur. (nice color and irid.)**
94. **9" N G & C Variant Stippled Bowl with Pie Crust Edge and Ribbed Exterior - Mari. (scarce item; nice)**
95. **N G & C VARIANT STIPPLED PLATE WITH RIBBED EXTERIOR - SAPPHIRE (FANTASTIC ITEM; ABOUT AS SUPER AS THEY GET)**
96. **N G & C VARIANT STIPPLED FLAT PLATE WITH RIBBED EXTERIOR - BLUE (RARE AND VERY DESIRABLE - GOLD HIGHLIGHTS)**
97. **N G & C Handled Punch Cup - White (super example)**
98. **N G & C Stippled Handled Punch Cup - Green (super example)**
99. **N G & C Stippled Handled Punch Cup - Blue (gold highlights)**
100. **N G & C TANKARD 7 PC. WATER SET - PUR. (RARE SET TO FIND COMPLETE - REALLY NICE)**
101. **N G & C Stippled Handled Bon Bon with Basketweave Exterior - Green (rare variation with Butterscotch overlay)**
102. **N G & C Stippled Handled Bon Bon with Basketweave Exterior - Dk. Mari. (nice color and irid.)**
103. **N G & C BON BON WITH BASKETWEAVE EXTERIOR - WHITE (VERY RARE; THIS ONE IS VERY ATTRACTIVE)**
104. **N G & C Bon Bon with Basketweave Exterior - Blue (scarce color)**
105. **N G & C ftd. Hatpin Holder - Pur. (very scarce and desirable; perfect)**
106. **N G & C Cologne Bottle and Stopper - Pur. (very scarce; very attractive item)**
107. **N G & C Covered Powder Jar - Pur. (perfect with excellent color and irid.)**
108. **N G & C Large Dresser Tray - Pur. (super example and nice)**
109. **N G & C Small Pin Tray - Pur. (very scarce; nice)**
110. **N G & C Breakfast Sugar and Creamer - Pur. (nice pair)**
111. **N G & C with Thumbprint Ind. Berry Bowl - Pur. (nice color)**
112. **N Wild Rose ftd. Flared Nut Bowl - Elec. Blue (super example with great color)**
113. **N Wild Rose ftd. Flared Nut Bowl - Green (a beauty with bright color and irid.)**
114. **N Wild Rose ftd. Flared Nut Bowl - Dk. Mari. (excellent example - great color and irid.)**
115. **N THREE FRUITS STIPPLED PLATE WITH RIBBED EXTERIOR - AQUA OPAL. (RARE AND EXTREMELY DESIRABLE; OPAL. ON EDGE)**
116. **N THREE FRUITS STIPPLED PLATE WITH RIBBED EXTERIOR - AQUA (VERY RARE AND DESIRABLE; NICE IRID.)**

- _____ 117. N Three Fruits Stippled Plate with Ribbed Exterior - Dk. Mari. (very desirable; a couple points pushed in making)
- _____ 118. **N THREE FRUITS STIPPLED RUFFLED BOWL WITH RIBBED EXTERIOR - AQUA OPAL. (VERY RARE AND VERY DESIRABLE; SUPER)**
- _____ 119. **N THREE FRUITS MEDALLION FTD. RUFFLED BOWL WITH MEANDER EXTERIOR - AQUA OPAL. (UNREAL YELLOWISH BUTTERSCOTCH OVERLAY - WONDERFUL)**
- _____ 120. **N FRUIT AND FLOWERS STEMMED HANDLED BON BON - AQUA OPAL. (NICE AVERAGE COLOR, IRID. AND OPAL.)**
- _____ 121. **N FRUIT AND FLOWERS STEMMED HANDLED BON BON - ICE BLUE (VERY SCARCE COLOR; IRID. A BIT SILVERY)**
- _____ 122. **N FRUIT AND FLOWERS STEMMED HANDLED BON BON - WHITE (VERY SCARCE; HAS NICE MULTI-COLORED IRID.)**
- _____ 123. **N FRUIT AND FLOWERS STEMMED HANDLED BON BON - ELEC. BLUE (OUTSTANDING EXAMPLE WITH BRIGHT BLUE IRID.)**
- _____ 124. N Fruit and Flowers Stemmed Handled Bon Bon - Green (scarce; a really nice example)
- _____ 125. N Fruit and Flowers Stemmed Handled Bon Bon - Amy. (super irid.; it does have a flake on base)
- _____ 126. N Fruit and Flowers Stemmed Handled Bon Bon - Mari. (nice example)
- _____ 127. **N FRUIT AND FLOWERS STIPPLED STEMMED HANDLED BON BON - GREEN (VERY RARE AND DESIRABLE VARIATION)**
- _____ 128. **N FRUIT AND FLOWERS STIPPLED STEMMED HANDLED BON BON - ELEC. BLUE (OUTSTANDING AND QUITE DIFFICULT TO FIND)**
- _____ 129. N Fruit and Flowers Stippled Stemmed Handled Bon Bon - Mari. (very scarce with nice color and irid.)
- _____ 130. **N GRAPE AND GOTHIC ARCHES HANDLED WATER PITCHER - EMERALD GREEN (ABSOLUTELY FANTASTIC EXAMPLE WITH BRIGHT COLOR AND IRID.)**
- _____ 131. N Grape and Gothic Arches Tumbler - Emerald Green (a beaut! top edge sorta turns in a bit)
- _____ 132. N Memphis Handled Punch Cup - Lime Ice Green (nice color and irid.; small flake on base)
- _____ 133. N Memphis Handled Punch Cup - Ice Blue (nice color and irid.)
- _____ 134. N Greek Key Tumbler - Green (scarce; has a heavy Mari. overlay)
- _____ 135. **N GREEK KEY 6 PC. TANKARD WATER SET - PUR. (RARE AND DESIRABLE; PITCHER HAS A BRONZE OVERLAY)**
- _____ 136. **N GREEK KEY PLATE WITH BASKETWEAVE EXTERIOR - MARI. (RARE AND DESIRABLE; NICE SATINY FINISH)**
- _____ 137. N Daisy and Plume Stemmed Ruffled Rose Bowl with Band - Amy. (scarce base color - nice)
- _____ 138. N Daisy and Plume Stemmed Ruffled Rose Bowl with Band - Mari. (nice dark color and irid.)
- _____ 139. N Daisy and Plume Stemmed Ruffled Rose Bowl - Green (has a Mari. interior - nice)
- _____ 140. **N ACORN BURR 8 PC. PUNCH SET - GREEN (RARE AND DESIRABLE SET WITH NICE COLOR AND IRID.)**
- _____ 141. **11" TALL N THIN RIB STANDARD SWUNG VASE - SAPPHIRE (A BEAUTY; PERFECT WITH GREAT BASE GLASS COLOR)**
- _____ 142. **11 3/4" TALL N THIN RIB MID SIZE SWUNG VASE - WHITE (VERY SCARCE; FROSTY WITH NICE IRID.)**
- _____ 143. 13 1/2" Tall N Thin Rib Mid Size Swung Vase - Green (nice color and irid.; scarce)
- _____ 144. 9 1/4" Tall N Feathers Swung Vase - Amy. (sorta silvery)
- _____ 145. **10 1/2" TALL N LEAF COLUMNS SWUNG VASE - HOREHOUND (VERY RARE BASE COLOR FOR THIS ITEM - NEAT!)**
- _____ 146. **7 1/2" TALL N PILLAR RIBBED SWUNG VASE - ELEC. BLUE (GREAT COLOR, IRID. AND SIZE)**
- _____ 147. 9 3/4" Tall N Pillar Ribbed Swung Vase - Aqua Opal. (great color and opal., minor roughness on feet)
- _____ 148. 10 1/2" Tall N Pillar Ribbed Swung Vase - Olive Green (scarce; nice color and irid.)
- _____ 149. **6 1/2" TALL N DIAMOND POINT SQUATTY SWUNG VASE - WHITE (A REAL CUTIE; GREAT SIZE AND IRID. - NEAT!)**
- _____ 150. **10 3/4" TALL N TREE TRUNK SWUNG VASE - ICE BLUE (ALWAYS SCARCE AND DESIRABLE; NICE COLOR AND IRID.)**
- _____ 151. **7" TALL N TREE TRUNK SQUATTY SWUNG VASE - WHITE (VERY SCARCE AND DESIRABLE; NICE IRID.)**
- _____ 152. 10 3/4" Tall N Tree Trunk Standard Swung Vase - Pur. (really nice example)
- _____ 153. 10 3/4" Tall N Tree Trunk Standard Swung Vase - Green (another really nice example)
- _____ 154. 8" Tall N Drapery Swung Vase - Blue Opal. (not Carnival; super opal.)
- _____ 155. 9" Tall N Drapery Swung Vase - Aqua (rare color; has chip on one toe)
- _____ 156. **7 1/4" N DRAPERY SWUNG VASE - ICE BLUE (PERFECT WITH GREAT COLOR AND IRID.)**
- _____ 157. **8 1/4" TALL N DRAPERY SWUNG VASE - ICE GREEN (VERY SCARCE AND ATTRACTIVE; GOOD FEET)**
- _____ 158. 8 3/4" Tall N Drapery Swung Vase - White (very scarce; nice and frosty - good feet)
- _____ 159. 7" Tall N Drapery Swung Vase - Green (rare color; has minor manuf. peeling on edge)
- _____ 160. 7 1/2" Tall N Drapery Swung Vase - Dk. Mari. (super color and irid.; perfect feet)
- _____ 161. N Drapery Tri-Cornered Candy Dish - Lime Ice Green (rare color; has very slight chip on one toe)
- _____ 162. N Drapery Tri-Cornered Candy Dish - Dk. Ice Blue (rare and desirable; perfect feet)
- _____ 163. N Drapery Tri-Cornered Candy Dish - White (very scarce and nice; perfect feet)
- _____ 164. N Drapery Tri-Cornered Candy Dish - Dk. Mari. (scarce; has chip under toe)
- _____ 165. **N DRAPERY ROSE BOWL - ELEC. BLUE (VERY RARE AND DESIRABLE; HAS BRIGHT BLUE IRID.)**
- _____ 166. **N DRAPERY ROSE BOWL - ICE BLUE OPAL. (VERY RARE BASE COLOR - VERY UNUSUAL AND NEAT!)**
- _____ 167. **N DRAPERY ROSE BOWL - AQUA OPAL. (RARE AND DESIRABLE; NICE PASTEL IRID. - SUPER)**

- _____ 168. N DRAPERY ROSE BOWL - AQUA OPAL. (RARE AND DESIRABLE; HAS NICE BUTTERSCOTCH OVERLAY)
- _____ 169. N DRAPERY ROSE BOWL - AQUA OPAL. (RARE; NICE COLOR WITH HEAVY BUTTERSCOTCH OVERLAY)
- _____ 170. N DRAPERY ROSE BOWL - ICE BLUE (VERY RARE AND DESIRABLE; NOT MANY SOLD)
- _____ 171. N DRAPERY ROSE BOWL - WHITE (VERY SCARCE; NICE FROSTY FINISH)
- _____ 172. N DRAPERY ROSE BOWL - DK. MARI. (SUPER EXAMPLE - A BEAUTY!)
- _____ 173. N DRAPERY ROSE BOWL - PUR. (VERY SCARCE; PERFECT WITH GREAT COLOR AND IRID.)
- _____ 174. N CHERRY AND CABLE TUMBLER - MARI. (VERY RARE AND UNDERPRICED ITEM)
- _____ 175. N STIPPLED SINGING BIRD HANDLED MUG - BLUE (EXTREMELY RARE AND DESIRABLE; NICE IRID.)
- _____ 176. N STIPPLED SINGING BIRD HANDLED MUG - GREEN (ANOTHER RARE VARIATION WITH GOLD IRID.)
- _____ 177. N Stippled Singing Bird Handled Mug - Pur. (extremely rare item but cracked all around)
- _____ 178. N Stippled Singing Bird Handled Mug - Dk. Mari. (super dark example; great color and irid.)
- _____ 179. N Singing Bird Handled Mug - Blue Opal. (not Carnival but a very scarce item with nice opal.)
- _____ 180. N STIPPLED SINGING BIRD HANDLED MUG - VASELINE OPAL. (NOT CARNIVAL BUT AN EXTREMELY RARE ITEM - NOT TOO MANY ARE STIPPLED)
- _____ 181. N SINGING BIRD HANDLED MUG - ICE BLUE (VERY RARE AND DESIRABLE; NICE MULTICOLORED IRID.)
- _____ 182. N SINGING BIRD HANDLED MUG - WHITE (VERY RARE AND DESIRABLE; NICE PINK HIGHLIGHTS)
- _____ 183. N SINGING BIRD HANDLED MUG - LAVENDER (VERY RARE BASE COLOR; NICE - UNUSUAL)
- _____ 184. N SINGING BIRD HANDLED MUG - HOREHOUND (VERY RARE BASE COLOR WITH GREAT IRID.)
- _____ 185. N SINGING BIRD HANDLED MUG - EMERALD GREEN (SUPER ITEM WITH BRIGHT IRID. - NICE)
- _____ 186. N SINGING BIRD HANDLED MUG - ELEC. BLUE (SUPER EXAMPLE WITH BRIGHT BLUE HIGHLIGHTS)
- _____ 187. N SINGING BIRD HANDLED MUG - PUR. (EXCELLENT EXAMPLE WITH NICE IRID.)
- _____ 188. N SINGING BIRD HANDLED MUG - PASTEL MARI. (ACTUALLY QUITE A RARE SHADE OF COLOR; SUPER IRID.)
- _____ 189. N Singing Bird Handled Mug - Dk. Mari. (super color and irid.)
- _____ 190. N STIPPLED RAYS WHIMSEY RUFFLED ROSE BOWL - PUR. (EXTREMELY RARE SHAPE FOR THIS PATTERN - ONLY A COUPLE KNOWN)
- _____ 191. N BEADED CABLE FTD. ROSE BOWL - ICE GREEN OPAL. (RARE TINT - MORE ICE GREEN THAN AQUA, SUPER COLOR)
- _____ 192. N BEADED CABLE FTD. ROSE BOWL - AQUA OPAL. (SUPER IRID. AND OPAL. - GREAT ITEM)
- _____ 193. N BEADED CABLE FTD. ROSE BOWL - SAPPHIRE BLUE OPAL. (VERY UNUSUAL BASE COLOR, MORE BLUE; NEAT)
- _____ 194. N BEADED CABLE FTD. ROSE BOWL - AQUA / MARI. (NO OPAL. - JUST AQUA BASE GLASS WITH MARI. OVERLAY)
- _____ 195. N BEADED CABLE FTD. ROSE BOWL - ICE GREEN (VERY RARE AND DESIRABLE; GREAT COLOR AND IRID.)
- _____ 196. N BEADED CABLE FTD. ROSE BOWL - ICE BLUE (RARE AND VERY DESIRABLE; SUPER PINK HIGHLIGHTS)
- _____ 197. N BEADED CABLE FTD. ROSE BOWL - WHITE (VERY SCARCE; GREAT PINK AND BLUE HIGHLIGHTS)
- _____ 198. N BEADED CABLE FTD. ROSE BOWL - GREEN (THIS EXAMPLE HAS TO BE ONE OF THE BEST - SUPER!)
- _____ 199. N BEADED CABLE FTD. ROSE BOWL - ELEC. BLUE (ANOTHER WONDERFUL EXAMPLE; BRIGHT BLUE HIGHLIGHTS)
- _____ 200. N Beaded Cable ftd. Rose Bowl - Pur. (super example with great irid.)
- _____ 201. N Beaded Cable ftd. Rose Bowl - Dk. Mari. (nice dark color and irid.)
- _____ 202. N BEADED CABLE FTD. ROSE BOWL WITH RAYS INTERIOR - AQUA (VERY RARE COLOR FOR THIS VARIATION - NEAT)
- _____ 203. N BEADED CABLE FTD. ROSE BOWL WITH RAYS INTERIOR - VIOLET BLUE (EXTREMELY RARE ITEM IN THIS COLOR - SORTA SILVERY)
- _____ 204. N BEADED CABLE FTD. ROSE BOWL WITH RAYS INTERIOR - VIOLET (ANOTHER UNUSUAL BASE COLOR WITH MARI. INTERIOR)
- _____ 205. N Beaded Cable ftd. Rose Bowl with Rays Interior - Green (scarce; irid. on interior)
- _____ 206. N Beaded Cable ftd. Rose Bowl with Rays Interior - Pur. (satiny finish)
- _____ 207. N Beaded Cable ftd. Rose Bowl with Rays Interior - Mari. (actually quite a scarce color for this item)
- _____ 208. N LEAF AND BEADS FTD. ROSE BOWL WITH FLORAL INTERIOR - SAPPHIRE (EXTREMELY RARE AND VERY DESIRABLE; GREAT COLOR)
- _____ 209. N Leaf and Beads ftd. Rose Bowl with Floral Interior - Green / Mari. (rare variation; has really nice overlay)
- _____ 210. N Leaf and Beads ftd. Rose Bowl with Floral Interior - Green (a beauty; quite a tough item to locate)
- _____ 211. N LEAF AND BEADS FTD. ROSE BOWL WITH FLORAL INTERIOR AND STRAIGHT EDGE - PUR. (RARE FLAT TOP ITEM THAT'S SELDOM SOLD)
- _____ 212. N Leaf and Beads ftd. Rose Bowl with Floral Interior - Amy. (very scarce; has nice satiny finish)
- _____ 213. N Leaf and Beads ftd. Rose Bowl with Floral Interior - Dk. Mari. (scarce with nice dark color and irid.)
- _____ 214. N Leaf and Beads ftd. Rose Bowl with Stippled Rays Interior - Green (a much better than average example)
- _____ 215. N LEAF AND BEADS FTD. ROSE BOWL - AQUA OPAL. / MARI. (RARE; HAS HEAVY BUTTERSCOTCH OVERLAY INSIDE AND OUT)
- _____ 216. N LEAF AND BEADS FTD. ROSE BOWL - AQUA OPAL. / MARI. (RARE; AS ABOVE; NO INTERIOR IRID.)

- _____ 217. N Leaf and Beads ftd. Rose Bowl - Aqua Opal. (a super pastel example; interior worn a bit)
- _____ **218. N LEAF AND BEADS FTD. ROSE BOWL - AQUA OPAL. (MORE BLUE OPAL. THAN AQUA; VERY DESIRABLE)**
- _____ 219. N Leaf and Beads ftd. Rose Bowl - White (very scarce; excellent quality; 2 checks in feet)
- _____ **220. N LEAF AND BEADS FTD. ROSE BOWL - TEAL BLUE (ACTUALLY BLUE WITH TEAL IRID.; REALLY UNUSUAL)**
- _____ 221. N Leaf and Beads ftd. Rose Bowl - Green (rare color; very attractive; has manuf. pigment)
- _____ 222. N Leaf and Beads ftd. Rose Bowl - Blue (really deep blue with goldish highlights)
- _____ **223. N LEAF AND BEADS FTD. ROSE BOWL - LT. AMY. OR LAVENDER (VERY SCARCE BASE COLOR - A VERY ATTRACTIVE ITEM)**
- _____ 224. N Leaf and Beads ftd. Rose Bowl - Dk. Mari. (super example with great color and irid.)
- _____ **225. N FINE CUT AND ROSES FTD. ROSE BOWL WITH FANCY INTERIOR - HOREHOUND (A SUPER RARE COLOR FOR THIS PATTERN; NICE ITEM)**
- _____ 226. N Fine Cut and Roses ftd. Rose Bowl with Fancy Interior - Pur. (a beauty but has a chip on one foot)
- _____ 227. N Fine Cut and Roses ftd. Rose Bowl with Fancy Interior - White (rare but has damaged feet)
- _____ 228. N Fine Cut and Roses ftd. Rose Bowl with Fancy Interior - Ice Blue (very scarce and desirable; silvery irid.)
- _____ 229. N Fine Cut and Roses ftd. Rose Bowl with Fancy Interior - Olive Green (rare color with the interior pattern; damaged feet)
- _____ **230. N FINE CUT AND ROSES FTD. ROSE BOWL WITH NO COLLAR BASE - GREEN (RARE AND DESIRABLE - NOT MANY AROUND)**
- _____ **231. N FINE CUT AND ROSES FTD. ROSE BOWL WITH NO COLLAR BASE - AMY. (ANOTHER VERY SCARCE ITEM; NICE COLOR)**
- _____ **232. N FINE CUT AND ROSES FTD. ROSE BOWL - VIOLET (SATINY FINISH; VERY RARE BASE COLOR)**
- _____ 233. N Fine Cut and Roses ftd. Rose Bowl - Green (scarce with excellent irid.)
- _____ 234. N Fine Cut and Roses ftd. Rose Bowl - Amy. (nice satiny finish)
- _____ 235. N Fine Cut and Roses ftd. Rose Bowl - Pastel Mari. (scarce base color; nice)
- _____ 236. N Fine Cut and Roses ftd. Rose Bowl - Mari. (nice color and detail)
- _____ 237. N Barbella Tumbler with Enameled Apple Blossom Decor. - Blue (rare item with excellent decoration)
- _____ 238. N Enameled Daisy and Little Flowers Tumbler - Blue (scarce; nice decoration)
- _____ 239. N Acorn Burr Tumbler - Pur. (nice color and irid.)
- _____ **240. N SPRINGTIME COVERED BUTTER DISH - PUR. (RARE, DESIRABLE; SUPER COLOR AND IRID.; NICE ITEM)**
- _____ 241. N Memphis ind. Round Berry Bowl - Dk. Mari. (super color and irid. for this rare item)
- _____ 242. N Butterfly 2 Handled Bon Bon - Green (nice satiny finish)
- _____ 243. N Butterfly 2 Handled Bon Bon - Mari. (nice color; has heat check in base)
- _____ 244. N Thin Rib Lamp Shade - Irid. Luna (very scarce and attractive)
- _____ 245. N Grape and Gothic Arches Tumbler - Pearlized Custard (scarce; nice color and irid.)
- _____ 246. N Acorn Burr Punch Base only - Green (scarce part)
- _____ 247. N Acorn Burr Punch Base only - White (scarce part with nice irid.)
- _____ 248. Imperial Star Medallion Tankard Tumbler - Dk. Mari. (great color)
- _____ 249. Imperial Star Medallion Tumbler - Dk. Mari. (nice color and irid.)
- _____ **250. IMPERIAL GRAPE 8 PC. PUNCH SET - PUR. (SUPER SET WITH FABULOUS IRID. - YA GOTTA LOVE IT!)**
- _____ 251. Imperial Grape Handled Water Pitcher - Pur. (great color and irid.; has one open bubble)
- _____ 252. (3) Imperial Grape Tumblers - Pur. (great color and irid.; selling choice)
- _____ **253. IMPERIAL GRAPE ROSE BOWL - AMBER (EXTREMELY RARE COLOR AND SHAPE FOR THIS ITEM)**
- _____ 254. Imperial Grape Nut Bowl - Mari. (very scarce shape for this item)
- _____ **255. IMPERIAL GRAPE HANDLED WATER PITCHER - EMERALD GREEN (FANTASTIC ITEM; NOT MANY SOLD; NICE BLUE HIGHLIGHTS)**
- _____ 256. Imperial Grape 7 pc. Water Set - Helios Green (scarce set; complete and perfect)
- _____ 257. Imperial Optic Stemmed Goblet signed with Iron Cross - Mari. (scarce; nice color)
- _____ 258. Imperial Optic Rose Bowl - Mari. (nice color and irid.)
- _____ **259. IMPERIAL OPTIC CUP AND SAUCER - DK. MARI. (VERY RARE SET; ONLY THE SECOND WE'VE SOLD)**
- _____ **260. IMPERIAL OPTIC LARGE HANDLED WATER PITCHER - DK. MARI. (ANOTHER EXTREMELY RARE ITEM WITH EXCELLENT COLOR AND IRID.)**
- _____ 261. Imperial Grape Handled Flower Basket - Mari. (nice color)
- _____ 262. Imperial Daisy Handled Flower Basket - Pastel Mari. (great irid.)
- _____ 263. Pair Premium Candlesticks - Mari. (nice pair)
- _____ 264. Imperial Cape Cod Cruet and Stopper - Mari. (unsure of age but it is a rare item)
- _____ **265. IMPERIAL FASHION ROSE BOWL - PUR. (ABSOLUTELY FANTASTIC EXAMPLE; ONE OF THE BEST)**
- _____ **266. IMPERIAL FASHION ROSE BOWL - MARI. (VERY SCARCE AND DESIRABLE; NICE COLOR)**
- _____ **267. IMPERIAL DOUBLE DUTCH / FLORAL AND OPTIC FTD. ROSE BOWL - CLAMBROTH (VERY RARE; ONLY ONE WE'VE SEEN; CHIP ON FOOT)**
- _____ 268. Imperial Diamond Ring Rose Bowl - Dk. Mari. (super color and irid.; great example)
- _____ 269. Imperial 3 in 1 Rose Bowl - Dk. Mari. (very rare item in this shape; super color)
- _____ **270. IMPERIAL HATTIE ROSE BOWL - AMBER (MY FAVORITE ITEM IN THIS AUCTION; SUPER COLOR WITH EXCELLENT BLUE AND RED IRID.)**
- _____ **271. IMPERIAL HATTIE ROSE BOWL - MARI. (VERY RARE WITH NICE COLOR AND IRID.)**





- _____ 272. Imperial Hobstar Flower Stemmed Ruffled Com-
pote - Pur. (scarce; really nice color and irid.)
- _____ 273. Imperial Hobstar Flower Stemmed Ruffled Com-
pote - Dk. Mari. (another scarce item)
- _____ 274. 4 1/2" Imperial Heavy Grape ind. Round Berry
Bowl - Pur. (super color and irid.)
- _____ 275. **IMPERIAL OPEN ROSE ROSE BOWL - PUR.
(QUITE A RARE ITEM WITH GREAT COLOR
AND IRID.)**
- _____ 276. Imperial Open Rose Rose Bowl - Amber (very
scarce; nice color and irid.)
- _____ 277. **IMPERIAL OPEN ROSE ROSE BOWL -
SMOKE (A VERY RARE COLOR FOR THIS
ITEM)**
- _____ 278. Imperial Open Rose Rose Bowl - Lime Green (a
very attractive example for this pattern)
- _____ 279. Imperial Open Rose Rose Bowl - Dk. Mari. (nice
color and irid.)
- _____ 280. **IMPERIAL LOGANBERRY VASE - AMBER (A
DARK AND VERY ATTRACTIVE EXAMPLE -
SUPER)**
- _____ 281. **18 1/2" TALL IMPERIAL RIPPLE
SWUNG FUNERAL VASE - VASELINE
/ MARI. (EXTREMELY DESIRABLE
ITEM THAT GLOWS LIKE CRAZY)**
- _____ 282. **10 3/4" TALL IMPERIAL RIPPLE STANDARD
SWUNG VASE - AQUA / TEAL (RARE BASE
COLOR; VERY NICE ITEM)**
- _____ 283. 14 3/4" Tall Imperial Ripple Mid Size Swung
Vase - Pur. (very desirable; super color and irid.)
- _____ 284. Imperial Tiger Lily Handled Water Pitcher -
Green (pretty nice example for this item)
- _____ 285. **IMPERIAL ZIPPER HEART GIANT
ROSE BOWL - HELIOS GREEN
(RARE ITEM IN ANY COLOR; HAS
TYPICAL SILVER IRID. BUT GO FIND
ONE...)**
- _____ 286. **IMPERIAL FLORAL OPTIC FTD. RUFFLED
ROSE BOWL - TEAL (RARE COLOR WITH
PERFECT FEET; TOUGH ITEM)**
- _____ 287. Imperial Floral Optic ftd. Rose Bowl - Mari. / Milk
Glass (scarce item; worn interior; small flake on
one foot)
- _____ 288. **IMPERIAL COLONIAL FLUTE HANDLED
TOOTHPICK HOLDER WITH IRON CROSS -
MARI. (RARE AND VERY DESIRABLE; A
TOUGHIE)**
- _____ 289. Imperial Colonial Flute Handled Punch Cup - Dk.
Mari. (signed with Iron Cross)
- _____ 290. Imperial Fashion Tumbler - Pur. (very rare and
desirable; chip on pattern)
- _____ 291. **IMPERIAL OCTAGON LARGE COLLAR
BASED TUMBLER - PUR. (RARE COLOR -
TOUGH TO FIND)**
- _____ 292. **IMPERIAL TIGER LILY TUMBLER - PUR.
(ANOTHER RARE COLORED TUMBLER;
REALLY NICE)**
- _____ 293. **IMPERIAL WINDMILL TUMBLER - PUR.
(RARE COLOR - NICE IRID. - A TOUGHIE!)**
- _____ 294. Imperial Lustre Rose Tumbler - Pur. (very
scarce - haven't sold many lately)
- _____ 295. **IMPERIAL LUSTRE ROSE TUMBLER -
AMBER (A VERY DIFFICULT COLOR FOR
THIS ITEM)**
- _____ 296. Imperial Lustre Rose Tumbler - Olive Green
(scarce color)
- _____ 297. Imperial Star and File Tumbler - Dk. Mari. (nice
color and irid.)
- _____ 298. Imperial Tiger Lily Tumbler - Helios Green
(scarce)
- _____ 299. Imperial Hobstar Band Tumbler - Mari. (has to be
one of the best examples I've seen)
- _____ 300. **IMPERIAL OCTAGON LARGE COLLAR
BASED TUMBLER - GREEN (HOW MANY OF
THESE DO YOU SEE?NOT MANY)**

START OF SECOND SESSION

- _____ 301. Imperial 474 Tumbler - Aqua / Teal (extremely
rare base color for this pattern)
- _____ 302. Imperial Tiger Lily Tumbler - Amber / Teal with
Mari. Interior (very rare base color - unusual)
- _____ 303. Imperial 474 Tumbler - Violet Blue (very scarce
base color - really tough)
- _____ 304. Imperial Flute Tumbler - Pur. (very scarce item;
nice color and great irid.)
- _____ 305. **IMPERIAL FILE TUMBLER - MARI. (USED TO
BE VERY RARE AND EXPENSIVE, STILL IS)**
- _____ 306. Imperial Flute Breakfast Sugar and Creamer -
Pur. (very scarce set with nice color and irid.)
- _____ 307. Imperial Robin Handled Mug - Dk. Mari. (excel-
lent color, irid. and strike - nice)
- _____ 308. Imperial Heavy Grape Handled Punch Cup -
Helios Green (very, very scarce item; really
tough)
- _____ 309. Imperial Fashion Handled Punch Cup - Powder
Blue / Mari. (very rare color - where's the bowl
and base?)
- _____ 310. **IMPERIAL OPEN ROSE FLAT PLATE - AMBER
(VERY RARE AND HAS GREAT BASE
COLOR)**
- _____ 311. Imperial 474 Handled Punch Cup - Olive Green /
Mari. (really odd base color - where's this set!?)
- _____ 312. Imperial Ribbed Jack in the Pulpit Vase - Dk.
Mari. (nice dark color)
- _____ 313. 17 1/4" Tall Imperial Morning Glory Large Swung
Funeral Vase - Mari. (very desirable; nice big
size)
- _____ 314. 7 1/4" Tall Miniature Morning Glory Swung Vase -
Clambroth (super irid.)
- _____ 315. 7 3/8" Tall Miniature Morning Glory Swung Vase -
Pur. (great color and irid. - nice)
- _____ 316. 6 1/2" Tall Imperial Miniature Morning Glory
Swung Vase - Smoke (about as dark an example
as I've seen)
- _____ 317. 6" Tall Imperial Miniature Morning Glory Swung
Vase - Lime Green / Mari. (scarce; pretty nice
example)
- _____ 318. 6 1/2" Tall Imperial Miniature Morning Glory
Swung Vase - Dk. Mari. (very nice example)
- _____ 319. 5" Tall x 3 5/8" Flare Imperial Miniature Morning
Glory Swung Vase - Dk. Mari. (nice size and
shape)
- _____ 320. **9 1/2" M'BURG GRAPE LEAVES 8
RUFFLED BOWL - GREEN (A STUN-
NING ITEM WITH A BEAUTIFUL RADI-
UM FINISH; ONE OF THE BEST
GREEN RADIUM BOWLS YOU CAN
FIND)**
- _____ 321. **10" M'BURG STRAWBERRY WREATH 6 RUF-
FLED CRIMPED EDGE BOWL - GREEN
(ANOTHER BEAUTIFUL RADIUM FINISH
ITEM)**

- _____ 322. **M'BURG LEAF AND LITTLE FLOWERS 6 RUFFLED MINIATURE COMPOTE - GREEN (RADIUM AND FANTASTIC IRID.)**
- _____ 323. M'burg Boutonierre Stemmed 6 Ruffled Compote - Green (radium and attractive - really nice)
- _____ 324. 6 3/4" M'burg Grape Wreath 6 Ruffled Bowl - Green (radium and very scarce; nice color)
- _____ 325. 8 3/4" M'burg Rays and Ribbons Ice Cream Shaped Bowl - Green (radium; great shape, color and irid.)
- _____ 326. 9 1/2" M'burg Zig Zag Bowl with 3 in 1 Edge - Green (radium; has two buffed flakes on base)
- _____ 327. 9 1/2" M'burg Holly Whirl 6 Ruffled Bowl - Green (radium; another attractive item; nice)
- _____ 328. 8" M'burg Mayan Ice Cream Shaped Bowl - Green (radium; has a darker finish)
- _____ 329. 6 1/4" M'burg Blackberry Wreath Sauce with 3 in 1 Edge - Green (radium with really nice irid.)
- _____ 330. **M'BURG HOBSTAR AND FEATHER 14 PC. TULIP TOP MASTER PUNCH SET - PUR. (EXTREMELY RARE SET - SATINY TOP WITH A NICE BASE; HAS FLAKE ON PATTERN OF BASE)**
- _____ 331. (2) M'BURG HOBSTAR AND FEATHER HEART SHAPED NAPPIES - LT. MARI. (BOTH RARE; BOTH HAVE SOME ROUGHNESS ON EDGE; SELLING CHOICE)
- _____ 332. **M'BURG HOBSTAR AND FEATHER GIANT ROSE BOWL PUR. (HAS TO BE ONE OF THE BEST - PERIOD!)**
- _____ 333. **M'BURG HOBSTAR AND FEATHER MASTER PUNCH BOWL AND BASE - GREEN TOP / PUR. BASE (VERY RARE; TOP HAS SMALL CHIP ON ONE FLUTE, BASE CRACKED AT TOP)**
- _____ 334. M'burg Hobstar and Feather Handled Punch Cup - Green (very scarce item)
- _____ 335. **M'BURG GAY 90'S TUMBLER - DK. MARI. (ABSOLUTELY SUPER EXAMPLE OF A RARE ITEM)**
- _____ 336. M'burg Marylin Tumbler - Lt. Mari. (very scarce - has light radium finish)
- _____ 337. M'burg Marylin Tumbler - Amy. (satiny; irid. just a bit silvery)
- _____ 338. M'burg Diamond Tumbler - Green (actually quite an attractive item; nice color and irid.)
- _____ 339. **M'BURG HANGING CHERRIES TUMBLER WITH MANUF. GROUND BASE - GREEN (RARE; ATTRACTIVE ITEM; NICE COLOR AND IRID.)**
- _____ 340. **M'BURG TRACERY 2 HANDLED SQUARE BON BON - AMY. (RARE AND DESIRABLE; SATINY FINISH)**
- _____ 341. **7" M'BURG STRAWBERRY WREATH 4 SIDED SQUARE BOWL - AMY. (RADIUM AND BEAUTIFUL - A SUPER EXAMPLE)**
- _____ 342. 7 1/2" M'burg Little Stars 6 Ruffled Bowl - Green (satiny; scarce; nice irid.)
- _____ 343. 8" M'burg Blackberry Wreath Ice Cream Shaped Bowl - Green (nice satiny finish)
- _____ 344. M'burg Holly Sprig 2 Sided 2 Handled Card Tray - Green (really nice satiny finish)
- _____ 345. **6 3/4" M'BURG TROUT AND FLY 4 SIDED SQUARE BOWL - MARI. (SATINY WITH NICE COLOR AND DETAIL)**
- _____ 346. **10" M'BURG SEAWEED BOWL WITH 3 IN 1 EDGE - MARI. (SUPER SATINY; VERY SCARCE AND UNDERPRICED; THIS IS A DANDY!)**
- _____ 347. 9 3/4" M'burg Hanging Cherries Ice Cream Bowl - Mari. (super satiny; great color and irid.)
- _____ 348. 7 1/4" M'burg Hanging Cherries Ice Cream Shaped Bowl - Dk. Mari. (satiny - probably as nice as I've seen)
- _____ 349. 10 1/4" M'burg Rosiland Large 6 Ruffled Bowl - Dk. Mari. (very attractive; satiny finish; nice)
- _____ 350. **M'BURG MULTIFRUIT AND FLOWERS 8 PC. PUNCH SET - DK. MARI. (SUPER SET; HAS A WONDERFUL SATINY FINISH)**
- _____ 351. 9 3/4" M'burg Whirling Leaves 6 Ruffled Bowl - Mari. (satiny finish - nice)
- _____ 352. 7 1/2" M'burg Little Stars 6 Ruffled Bowl - Mari. (scarce; nice satiny finish)
- _____ 353. **M'BURG HOBNAIL ROSE BOWL - DK. MARI. (RADIUM FINISH; ABOUT AS NICE AS THEY COME)**
- _____ 354. **M'BURG SWIRL HOBNAIL ROSE BOWL - DK. MARI. (ANOTHER REALLY FINE EXAMPLE)**
- _____ 355. **7 1/4" M'BURG GRAPE WREATH VARIANT ICE CREAM SHAPED BOWL - DK. MARI. (A RADIUM ITEM; GOTTA BE ILLEGAL TO OWN SOMETHING THIS GORGEOUS)**
- _____ 356. **5" M'BURG HOLLY SPRIG ROSE BOWL - MARI. / CLEAR (AS RARE AS CAN BE; MARI. AT TOP TO CLEAR AT BASE)**
- _____ 357. 10 1/4" M'burg Blackberry Wreath Large Bowl with 3 in 1 Edge - Green (satiny; nice size)
- _____ 358. M'burg Holly Sprig 2 Sided 2 Handled Card Tray - Green (attractive satiny finish)
- _____ 359. **9 1/2" M'BURG ZIG ZAG BOWL WITH 3 IN 1 EDGE - DK. MARI. (RADIUM; PERFECT AND VERY ATTRACTIVE)**
- _____ 360. **9 1/2" M'BURG MANY STARS 6 RUFFLED BOWL WITH 6 POINTED STAR - AMY. (RADIUM; SUPER, SUPER IRID.; TOUGH TO BEAT)**
- _____ 361. 9 1/2" M'burg Holly Whirl 6 Ruffled Bowl - Amy. (super radium finish - attractive)
- _____ 362. **10 1/2" M'BURG SEAWEED 6 RUFFLED BOWL - AMY. (GREAT SATINY FINISH - NICE ITEM)**
- _____ 363. M'burg Peacock Tail Variant 6 Ruffled Compote - Amy. (super radium finish - great item)
- _____ 364. 8 3/4" M'burg Blackberry Wreath Bowl with 3 in 1 Edge - Amy. (satiny; nice example)
- _____ 365. M'burg Multifruits and Flowers 8 pc. Flared Punch Set - Amy. (a beautiful set; base of bowl has been ground; also small chip on inside edge)
- _____ 366. **8 1/2 - 9" M'BURG TROUT AND FLY BOWL WITH 3 IN 1 EDGE - AMY. (A REALLY NICE EXAMPLE - VERY ATTRACTIVE)**
- _____ 367. **10" M'BURG PEACOCK AT THE URN LARGE ICE CREAM BOWL - AMY. (SATINY; HAS BEE, NO BEADING; PRETTY NICE EXAMPLE)**
- _____ 368. M'burg Swirl Hobnail Rose Bowl - Pur. (scarce; nice color; silvery / gold irid.)
- _____ 369. 10 1/2" Tall M'burg Swirl Hobnail Swung Vase - Pur. (rare, desirable; has almost a straight flare)
- _____ 370. M'burg Hobnail Rose Bowl - Pur. (very scarce; irid. is silvery / gold)
- _____ 371. 9 1/4" M'burg Nesting Swan 6 Ruffled Bowl - Dk. Mari. (radium and scarce; pretty nice item)
- _____ 372. 10" M'burg Nesting Swan 6 Ruffled Bowl - Green (satiny with light gold highlights)

- _____ 373. 9 3/4" M'burg Holly Whirl 6 Ruffled Bowl - Amy. (actually quite a nice satiny example)
- _____ 374. Cambridge Double Star Tumbler - Green (rough on top edge)
- _____ **375. CAMBRIDGE VENETIAN GIANT ROSE BOWL - DK. MARI. (SUPER COLOR AND IRID. - A BEAUT; PROBABLY AS PERFECT AN EXAMPLE AS YOU'LL FIND)**
- _____ 376. 8 1/2" CAMBRIDGE INVERTED STRAWBERRY LARGE TURNED IN MASTER BERRY BOWL - PUR. (SUPER RADIUM EXAMPLE WITH GREAT COLOR)
- _____ 377. Cambridge Inverted Thistle ind. Berry Bowl - Pur. (nice color)
- _____ 378. Cambridge Inverted Strawberry Tumbler - Pur. (very scarce; nice color with silvery / gold irid.)
- _____ **379. CAMBRIDGE DOUBLE STAR TUMBLER - DK. MARI. (RARE AND A VERY DIFFICULT ITEM TO FIND)**
- _____ **380. CAMBRIDGE INVERTED THISTLE FTD. FLARED NUT BOWL - GREEN (VERY RARE ITEM - ONLY A FEW KNOWN; GREAT COLOR)**
- _____ **381. 5 1/2" CAMBRIDGE INVERTED THISTLE DEEP ROUND NUT BOWL - GREEN (VERY RARE ITEM IN ANY COLOR; CAN'T REMEMBER SEEING TOO MANY OF THESE)**
- _____ 382. Dugan Stork in the Rushes with Lattice Band Tumbler - Blue (outstanding)
- _____ 383. Dugan Stork in the Rushes with Lattice Band Tumbler - Dk. Mari. (nice example)
- _____ 384. Dugan Stork in the Rushes with Lattice Band Handled Basket - Mari. (very scarce; nice color)
- _____ **385. DUGAN S REPEAT 14 PC. MASTER PUNCH SET - PUR. (WHAT CAN YA SAY? FANTASTIC SET; A GREAT EXAMPLE FOR THIS PATTERN; DEFINITELY ONE OF THE HIGHLIGHTS OF THE AUCTION!)**
- _____ **386. DUGAN S REPEAT TUMBLER - MARI. (WE WONDERED ABOUT THESE FOR YEARS ...OLD!)**
- _____ 387. Dugan Stork in the Rushes 2 Sided Hat from Tumbler - Pur. (super example)
- _____ 388. Dugan Stork in the Rushes Tumbler with Beaded Top - Blue (super example)
- _____ 389. Dugan Peacock at the Fountain Tumbler - Blue (really nice example)
- _____ **390. DUGAN MANY FRUITS RUFFLED TOP 8 PC. PUNCH SET - WHITE (VERY RARE AND DESIRABLE; PERFECT AND REALLY NICE)**
- _____ 391. Dugan Many Fruits Round Top 12 pc. Punch Set - Dk. Mari. (this is probably as nice a one as I've seen)
- _____ 392. Dugan Dahlia ftd. Covered Butter Dish - Dk. Mari. (very scarce; nice color and irid.)
- _____ 393. Dugan Dahlia ftd. ind. Berry Bowl - Dk. Mari. (nice color and irid.)
- _____ 394. Dugan Cherry Wreath Tumbler - Dk. Mari. (nice color and average irid.)
- _____ 395. Dugan Floral and Grape 5 pc. Bulbous Water Set - White (super set; great color and irid.)
- _____ 396. Dugan Big Basketweave Swung Vase - White (super color and irid.; great example)
- _____ 397. Dugan Stork and Rushes Handled Mug - Pur. (great detail, nice irid.)
- _____ 398. Dugan Stork and Rushes Handled Mug with Lattice Band - Amy. (very scarce color; satiny finish)
- _____ 399. Dugan Mary Ann Handled Vase - Amy. (very scarce; nice satiny finish)
- _____ **400. DUGAN DOUBLE STEM ROSE DOMED FLARED 10 RUFFLED BOWL - ICE GREEN (ONLY ONE KNOWN; AS NEAT A PIECE AS THERE IS)**
- _____ 401. DUGAN DOUBLE STEM ROSE DOMED DEEP 10 RUFFLED BOWL - CELESTE BLUE (PERFECT AND BEAUTIFUL! GREAT COLOR AND IRID.)
- _____ 402. DUGAN DOUBLE STEM ROSE DOMED 10 RUFFLED BOWL - AQUA (VERY RARE BASE COLOR - TOUGH!)
- _____ 403. Dugan Double Stem Rose Domed 10 Ruffled Bowl - P. Opal. (nice irid. and very attractive opal.)
- _____ 404. Dugan Double Stem Rose Domed 10 Ruffled Bowl - Lt. P. Opal. (nice opal., average irid.)
- _____ 405. Dugan Double Stem Rose Domed 10 Ruffled Bowl - Lt. Powder Blue / Mari. (just a bit odd base color - different)
- _____ **406. DUGAN DOUBLE STEM ROSE DOMED BOWL WITH 3 IN 1 EDGE - BLUE (REALLY NEAT BOWL WITH RADIUM IRID.; NICE)**
- _____ **407. DUGAN DOUBLE STEM ROSE DOMED BOWL WITH 3 IN 1 EDGE - LT. AMY. OR LAVENDER (SUPER LIGHT BASE GLASS WITH GREAT IRID.)**
- _____ 408. Dugan Double Stem Rose Domed Bowl with 3 in 1 Edge - White (super irid.; nice and frosty)
- _____ 409. Dugan Double Stem Rose Domed Deep Round Bowl - Mari. (satiny)
- _____ **410. DUGAN DOUBLE STEM ROSE DOMED DEEP ROUND BOWL - AQUA (RARE COLOR IN A VERY SCARCE SHAPE; NICE)**
- _____ 411. 9 1/4" Dugan Double Stem Rose Domed Flared Plate - Pur. (very scarce and desirable; nice multi-colored irid.)
- _____ 412. 9" Dugan Double Stem Rose Domed Flared Plate - White (very scarce; nice frosty irid.)
- _____ 413. Dugan Double Stem Rose Domed Deep Round Bowl - Amy. (sorta radium irid.; nice color)
- _____ **414. DUGAN FIVE HEARTS DOMED FLARED BOWL - DK. MARI. (SATINY WITH MULTI-COLORED IRID.; VERY SCARCE)**
- _____ **415. DUGAN VINTAGE GRAPE DOMED DEEP 8 RUFFLED BOWL - CELESTE BLUE (VERY RARE COLOR FOR THIS PATTERN; HAS TINY FLAKE)**
- _____ 416. Dugan Vintage Grape Domed Deep 8 Ruffled Bowl - Mari. (scarce)
- _____ **417. 9 1/4" DUGAN VINTAGE GRAPE DOMED FLAT PLATE - DK. MARI. (EXTREMELY RARE ITEM IN THIS SHAPE AND COLOR)**
- _____ 418. Dugan Vintage Grape Domed Low 8 Ruffled Bowl - Green (rare color for this pattern; nice)
- _____ 419. Dugan Vintage Grape Domed Low 8 Ruffled Bowl - Amy. (very scarce; nice irid.)
- _____ **420. 11" DUGAN HEAVY WEB LARGE FLARED BOWL - P. OPAL. (VERY RARE PATTERN; SUPER TOUGH AND REALLY NICE)**
- _____ 421. Dugan Honeycomb Rose Bowl - Dk. P. Opal. (almost caramel color - a beaut)

- _____ 422. **DUGAN MALAGA GRAPE ROSE BOWL - DK. MARI. (ONE OF ONLY A VERY FEW KNOWN - NICE)**
- _____ 423. Dugan Four Flowers Rose Bowl with Soda Gold Exterior - Mari. (very scarce shape for this pattern)
- _____ 424. 10 1/4" Dugan Cosmos Variant Chop Plate - Mari. (quite a nice example with bright irid.)
- _____ 425. **DUGAN GRAPEVINE LATTICE TANKARD WATER PITCHER - WHITE (VERY RARE; NICE IRID.; A TOUGH ITEM)**
- _____ 426. Dugan Grapevine Lattice Tumbler - White (super frosty example - nice)
- _____ 427. **DUGAN GRAPEVINE LATTICE TANKARD WATER PITCHER - AMY. (RARE, DESIRABLE; GOLDISH IRID.)**
- _____ 428. (2) Dugan Grapevine Lattice Tumblers - Amy. (selling choice; nice satiny finish)
- _____ 429. Dugan Pony 10 Ruffled Bowl - Pur. (very scarce; nice satiny finish)
- _____ 430. **8 1/2" DUGAN APPLE BLOSSOM TWIG ICE CREAM SHAPED BOWL - SMOKEY LAVENDER (VERY RARE AND DESIRABLE COLOR; NICE)**
- _____ 431. 8 1/2" Dugan Round Up Ice Cream Shaped Bowl - Pur. (scarce; has goldish irid.)
- _____ 432. **EUROPEAN WESTERN THISTLE TUMBLER - BLUE (RARE ITEM; GREAT IRID. - A TOUGHIE)**
- _____ 433. **EUROPEAN TIGER LILY TUMBLER - BLUE (VERY RARE; AN EXCELLENT EXAMPLE)**
- _____ 434. **U.S. GLASS WHITE OAK TUMBLER - MARI. (RARE AND DESIRABLE; PERFECT)**
- _____ 435. **WESTMORELAND DAISY SQUARES CRIMPED EDGE SPITTOON SHAPE STEMMED COMPOTE - LIME GREEN / MARI. (SUPER TOUGH ITEM; GREAT COLOR AND SHAPE - NICE)**
- _____ 436. Maker(?) Barrel Ribbed 2 Handled Toothpick Holder - Lt. Mari. (never seen this little miniature before)
- _____ 437. Maker(?) Trophy Loving Cup Handled Domed Toothpick Holder - Lt. Mari. (very scarce; another cute item)
- _____ 438. **U.S. GLASS BARS AND BEADS ROSE BOWL - LT. MARI. (ONE OF 2 KNOWN - SUPER RARE AND ATTRACTIVE)**
- _____ 439. **HIGBEE HAWAIIAN LEA ROSE BOWL, SIGNED - YELLOW MARI. (VERY RARE - ONLY ONE KNOWN; 2 CHECKS IN BASE)**
- _____ 440. **STEVENS AND WILLIAMS SWIRL RIBBED RUFFLED TOP MINIATURE SPITTOON - MARI. (WHAT A CUTIE! GREAT COLOR; HAS POLISHED PONTIL)**
- _____ 441. **FENTON RUFFLED RIB 6 RUFFLED SPITTOON - MARI. (RARE SHAPE; NOT MANY AVAILABLE)**
- _____ 442. Fenton 2 Row Open Edge 2 Sided Hat - Mari. / Vaseline (very attractive; nice color and irid.)
- _____ 443. Fenton Kittens Cup only - Dk. Mari. (scarce item; pretty nice detail)
- _____ 444. Pair 8 1/2" Tall Fenton Florentine Stretch Candlesticks - Ice Green (nice pair; nice color and irid.)
- _____ 445. **12" FENTON TWO FLOWERS BALL FTD. CHOP PLATE - DK. MARI. (EXTREMELY RARE FENTON ITEM - PROBABLY THE BEST THERE IS; SUPER COLOR)**
- _____ 446. **9 1/4" FENTON TWO FLOWERS SPATULA FTD. PLATE - MARI. (RARE AND VERY DESIRABLE ITEM; SOME ROUGHNESS ON MOLD LINE OF FEET)**
- _____ 447. **10 1/4" FENTON TWO FLOWERS BALL FTD. ICE CREAM SHAPED BOWL - WHITE (FROSTY EXAMPLE OF THIS VERY RARE COLORED ITEM - NICE)**
- _____ 448. **10 1/4" FENTON TWO FLOWERS BALL FTD. ICE CREAM SHAPED BOWL - MARI. / VASELINE (SUPER COLOR AND IRID.; GREAT BASE GLASS COLOR)**
- _____ 449. **10 3/4" FENTON TWO FLOWERS LARGE BALL FTD. 8 RUFFLED BOWL - SMOKEY BLUE / MARI. (VERY RARE BASE GLASS COLOR; UNUSUAL AND ATTRACTIVE)**
- _____ 450. **10 1/2" FENTON TWO FLOWERS LARGE BALL FTD. 8 RUFFLED BOWL - RED (EXTREMELY RARE ITEM IN THIS COLOR; MAY BE A COUPLE FEW KNOWN; HAS SMALL HAIRLINE IN THE BODY; WHERE DO YA FIND 'EM?)**
- _____ 451. **10 1/2" FENTON TWO FLOWERS LARGE BALL FTD. 8 RUFFLED BOWL - PUR. (VERY RARE COLOR FOR THIS ITEM; EXCELLENT IRID.; NICE DARK SHADE OF PUR.)**
- _____ 452. **10 1/2" FENTON TWO FLOWERS LARGE BALL FTD. 8 RUFFLED BOWL - SAPPHIRE (EXTREMELY RARE COLOR; MAINLY IRIDIZED ON EXTERIOR)**
- _____ 453. **10 3/4" FENTON TWO FLOWERS LARGE BALL FTD. 8 RUFFLED BOWL - AQUA / MARI. (ANOTHER RARE AND DESIRABLE BASE GLASS COLOR; TOUGH TO FIND)**
- _____ 454. **FENTON G & C FTD. RUFFLED FRUIT BOWL - WHITE / STRETCH EFFECT (VERY RARE ITEM; ONE OF A VERY FEW I'VE SEEN OR HEARD OF)**
- _____ 455. **FENTON HOLLY STEMMED 6 RUFFLED COMPOTE - RED (SUPER EXAMPLE OF THIS RED ITEM; NICE BRIGHT COLOR AND IRID.)**
- _____ 456. **FENTON HOLLY FLAT PLATE - GREEN (RARE BASE COLOR; VERY DESIRABLE ITEM; NICE IRID.)**
- _____ 457. 9 1/2" Fenton Holly Flat Plate - Dk. Mari. (super color and irid.; very desirable)
- _____ 458. **9 1/4" FENTON ORANGE TREE FLAT PLATE - BLUE (VERY SCARCE AND DESIRABLE; NICE COLOR AND IRID.)**
- _____ 459. 9" Fenton Orange Tree with Trunk Flat Plate - White (very scarce; super irid.)
- _____ 460. **FENTON DIAGONAL BAND 7 PC. TANKARD WATER SET WITH ENAMELED FORGET-ME-NOTS - GREEN (THIS HAS TO BE AS DESIRABLE A DECORATED SET AS I'VE EVER SOLD; LOOKS GREAT TOGETHER)**
- _____ 461. Fenton Diagonal Band Tankard Water Pitcher with Enameled Iris Decor. - Mari. (nice dark color and irid.; very desirable)
- _____ 462. Fenton Strawberry Scroll Tumbler - Blue (very scarce item; nice color and irid.)
- _____ 463. Fenton Fluffy Peacock Tumbler - Amy. (nice satiny finish)
- _____ 464. **FENTON BUTTERFLY AND BERRY TUMBLER - GREEN (THE BEST - PERIOD!)**
- _____ 465. **FENTON PANELED DANDELION 7 PC. TANKARD WATER SET - AMY. (ALWAYS A DESIRABLE FENTON SET TO SELL; NICE COLOR AND IRID.)**

466. FENTON BLUEBERRY TUMBLER - WHITE (VERY RARE COLOR FOR THIS ITEM; NOT OFTEN SOLD)
467. Fenton Orange Tree Handled Punch Cup - White (very scarce; really tough to find if ya need one)
468. 9 1/2" FENTON HEART AND VINE FLAT PLATE - BLUE (A REDDISH STRETCH FINISH MAKES THIS ITEM VERY ATTRACTIVE AND DESIRABLE)
469. 18 1/4" FENTON RUSTIC SWUNG FUNERAL VASE - DK. MARI. (SUPER COLOR AND IRID.; VERY DESIRABLE SIZE - NICE)
470. 9 1/4" FENTON CAPTIVE ROSE FLAT PLATE - MARI. (NICE COLOR AND IRID. TO THIS VERY DESIRABLE ITEM)
471. 9 1/4" FENTON CAPTIVE ROSE FLAT PLATE - AMY. (RARE AND DESIRABLE; NICE COLOR AND IRID.; TOUGH TO FIND)
472. 9" Fenton Captive Rose Flat Plate - Blue (average irid.)
473. 9 1/2" FENTON PEACOCK AND GRAPE FLAT PLATE - DK. MARI. (SUPER COLOR AND IRID.; BRIGHT BRILLIANT FINISH)
474. 9" FENTON CORAL FLAT PLATE - MARI. (EXTREMELY RARE PATTERN TO LOCATE; HAS TYPICAL SATINY IRID.; NICE)
475. 9" FENTON STAG AND HOLLY SPATULA FTD. FLAT PLATE - DK. MARI. (VERY RARE AND DESIRABLE; HAS NICE SATINY FINISH AND DETAIL)
476. 6" FENTON PERSIAN MEDALLION PLATE - AMY. (ABSOLUTELY SUPER IRID. ON THIS VERY, VERY RARE ITEM; I'VE YET TO SEE A BETTER ONE)
477. 6 1/4" FENTON PERSIAN MEDALLION FLAT PLATE - GREEN (AVERAGE COLOR AND IRID. BUT AN EXTREMELY SCARCE ITEM TO FIND)
478. 6 1/4" FENTON PERSIAN MEDALLION FLAT PLATE - BLACK AMY. (SATINY FINISH; VERY RARE BASE COLOR)
479. 6 1/8" Fenton Persian Medallion Flat Plate - Blue (goldish irid.; scarce)
480. 9 - 9 1/4" FENTON PERSIAN MEDALLION FLAT PLATE - WHITE (SUPER IRID.; PROBABLY AS NICE AN EXAMPLE OF THIS RARE ITEM AS YOU'LL FIND)
481. 10 1/4" FENTON PERSIAN MEDALLION CHOP PLATE - BLUE (RARE ITEM, GETTING TO BE VERY DESIRABLE; THIS IS AS NICE AS I'VE SEEN LATELY)
482. 8 3/4" FENTON PERSIAN MEDALLION 8 RUFFLED BOWL - RED (HAS 1/2" CHIP ON EDGE BUT PROBABLY AS RARE A RED 9" BOWL AS THERE IS; HAVEN'T SOLD TOO MANY OF THESE - EVER)
483. 8 3/4" FENTON PERSIAN MEDALLION 8 RUFFLED BOWL - WHITE (I CAN'T REMEMBER EVER SEEING TOO MANY OF THESE RARE BOWLS; EXTREMELY RARE WITH SUPER IRID.)
484. FENTON ROSE BOUQUET 2 HANDLED 4 SIDED BON BON - WHITE (RARE WITH WONDERFUL IRID.; DON'T SEE TOO MANY OF THESE)
485. 11" FENTON ORANGE TREE FTD. FLARED FRUIT BOWL - GREEN (EXTREMELY RARE COLOR AND SHAPE FOR THIS ITEM; HAS TO BE AS EXCELLENT AN EXAMPLE AS YOU'D WANT TO FIND - NICE!)
486. 8 1/2" FENTON CONCORD GRAPE BOWL WITH 3 IN 1 EDGE - GREEN (RARE, VERY DESIRABLE; AN EXCELLENT EXAMPLE OF THIS SOUGHT AFTER FENTON PRODUCT)
487. 5 1/2" FENTON PANTHER FTD. RUFFLED IND. BERRY BOWL - WHITE (THESE ARE PROBABLY AS TOUGH AN ITEM TO FIND AS ANY; NOT REALLY FROSTY WITH TYPICAL LIGHT IRID.)
488. 5 1/2" FENTON PANTHER FTD. RUFFLED IND. BERRY BOWL - AQUA / MARI. (ANOTHER VERY RARE, SOUGHT AFTER COLOR FOR THIS PATTERN; VERY ATTRACTIVE)
489. 7 1/2" Fenton Horsehead Medallion ftd. 8 Ruffled Bowl - Blue (very scarce and desirable; getting tough to find)
490. FENTON HORSEHEAD MEDALLION FTD. ROSE BOWL - MARI. / VASELINE (RARE AND DESIRABLE; NICE BASE GLASS COLOR THAT GLOWS LIKE CRAZY)
491. FENTON HORSEHEAD MEDALLION FTD. ROSE BOWL - SMOKEY BLUE (EXTREMELY RARE BASE COLOR FOR THIS ITEM; HAVEN'T SOLD TOO MANY)
492. FENTON HORSEHEAD MEDALLION FTD. ROSE BOWL - BLUE (NICE COLOR AND IRID.; ALWAYS DESIRABLE AND IN DEMAND; GREAT DETAIL)
493. Fenton Horsehead Medallion ftd. Rose Bowl - Lt. Mari. (light color and irid; perfect)
494. FENTON MIRRORRED LOTUS ROSE BOWL - DK. MARI. (RARE AND DESIRABLE PATTERN IN THIS SHAPE; NICE COLOR AND IRID.)
495. FENTON MIRRORRED LOTUS ROSE BOWL - WHITE (ANOTHER RARE COLOR FOR THIS ITEM; GETTING TOUGH TO FIND)
496. FENTON GARLAND FTD. ROSE BOWL - AMY. (THIS HAS TO BE AS RARE A COLOR TO FIND IN THIS PATTERN, LET ALONE BE ATTRACTIVE ON TOP OF IT)
497. FENTON GARLAND FTD. ROSE BOWL - GREEN (THIS ITEM IS AS RARE AS THE ITEM ABOVE!)
498. Fenton Garland ftd. Rose Bowl - Blue (scarce; nice color)
499. Fenton Garland ftd. Rose Bowl - Mari. (nice color)
500. FENTON G & C LARGE SIZE FTD. FRUIT BOWL WITH PERSIAN MEDALLION INTERIOR - AMY. (VERY RARE SIZE FOR THIS ITEM IN ANY COLOR; THIS EXAMPLE IS EXCELLENT)
501. FENTON ROSE WREATH / PERSIAN MEDALLION INTERIOR 8 PC. PUNCH SET - BLUE (SETS LIKE THIS ARE JUST NOT SHOWING UP ANYMORE; VERY ATTRACTIVE COLOR AND IRID.)
502. FENTON ROSE WREATH / PERSIAN MEDALLION INTERIOR 8 PC. PUNCH SET - DK. MARI. (SUPER COLOR AND IRID.; VERY ATTRACTIVE SET)
503. 10 1/4" Fenton Persian Medallion Large Flared 6 Ruffled Bowl - Blue (scarce; nice color and irid.)
504. 9" Fenton Persian Medallion Very Low Ruffled Bowl / Plate - Blue (very scarce shape for this item; unusual with nice satiny finish)
505. FENTON PERSIAN MEDALLION LARGE STEMMED RUFFLED CRIMPED EDGE COMPOTE - WHITE (EXTREMELY RARE COLOR FOR THIS ITEM; HAS TO BE AS ATTRACTIVE AN EXAMPLE AS THERE IS)

- _____ 506. **FENTON PERSIAN MEDALLION LARGE STEMMED RUFFLED CRIMPED EDGE COMPOTE - AMY. (RARE COLOR FOR THIS ITEM; HAVEN'T SEEN TOO MANY; NICE IRID.)**
- _____ 507. **FENTON PERSIAN MEDALLION LARGE STEMMED RUFFLED CRIMPED EDGE COMPOTE - GREEN (ANOTHER VERY SCARCE COLOR FOR THIS PATTERN; NICE MULTI-COLORED IRID.)**
- _____ 508. Fenton Persian Medallion Large Stemmed Ruffled Crimped Edge Compote - Blue (scarce; nice color and irid.)
- _____ 509. Fenton Persian Medallion Large Stemmed Ruffled Crimped Edge Compote - Dk. Mari. (very nice irid.)
- _____ 510. Fenton Persian Medallion Large Stemmed Ruffled Crimped Edge Compote - Pastel Mari. (scarce color; haven't seen too many)
- _____ 511. **FENTON PERSIAN MEDALLION ROSE BOWL - GREEN (AS RARE A COLOR AS THIS PATTERN HAS IN THIS SHAPE; VERY ATTRACTIVE AND DESIRABLE)**
- _____ 512. **FENTON PERSIAN MEDALLION ROSE BOWL - AMY. (ANOTHER EXTREMELY RARE COLOR FOR THIS ITEM; VERY ATTRACTIVE)**
- _____ 513. Fenton Persian Medallion Rose Bowl - Blue (very scarce and desirable; nice color and irid.)
- _____ 514. Fenton Persian Medallion Rose Bowl - White (very scarce and desirable; nice frosty finish and irid.)
- _____ 515. Fenton Persian Medallion Rose Bowl - Dk. Mari. (about as dark as they come; super irid.)
- _____ 516. Fenton Persian Medallion Rose Bowl - Lt. Mari. (scarce and desirable)
- _____ 517. Fenton Persian Medallion Rose Bowl - Clam-broth (odd color; scarce)
- _____ 518. **FENTON PERSIAN MEDALLION 2 HANDLED 4 SIDED BON BON - CELESTE BLUE (EXTREMELY RARE AND DESIRABLE COLOR; ABOUT AS ATTRACTIVE AS THEY GET)**
- _____ 519. **FENTON PERSIAN MEDALLION 2 HANDLED 4 SIDED BON BON - MARI. / MOONSTONE (ONE OF ONLY TWO I'VE EVER SEEN; IRID. IS LIGHT IN THE MIDDLE BUT IT'S PROBABLY BETTER THAN YOURS)**
- _____ 520. **FENTON PERSIAN MEDALLION 2 HANDLED 4 SIDED BON BON - AMBERINA (SCARCE AND DESIRABLE; NICE COLOR AND IRID.)**
- _____ 521. **FENTON PERSIAN MEDALLION 2 HANDLED 4 SIDED BON BON - SAPPHIRE / MARI. (UNUSUAL BASE COLOR; HAVEN'T SOLD TOO MANY)**
- _____ 522. **FENTON PERSIAN MEDALLION 2 HANDLED 4 SIDED BON BON - AQUA / MARI. (VERY SCARCE AND DESIRABLE BASE COLOR; A NICE ATTRACTIVE FENTON ITEM)**
- _____ 523. **FENTON PERSIAN MEDALLION 2 HANDLED 4 SIDED BON BON - MARI. / VASELINE (SCARCE BASE COLOR AND, OF COURSE, WILL GLOW LIKE CRAZY)**
- _____ 524. Fenton Persian Medallion 2 Handled 4 Sided Bon Bon - Amy. (nice color and irid.)
- _____ 525. Fenton Persian Medallion 2 Handled 4 Sided Bon Bon - Green (nice color and irid.)

**FOR THE RESULTS OF THIS OR ANY
BURNS AUCTION SERVICE AUCTION
SEND A SASE AND \$2.00 (INCLUDE NAME
OR DATE OF AUCTION) TO:**

**EMMA TILTON
221 N. PLUM ST.
GNADENHUTTEN, OH 44629**

**CHECK OUT BURNS AUCTION
SERVICE ON THE WEB!**

Visit our new Web site for information on upcoming auctions, complete auction listings and photos of auction highlights. You can e-mail your bids or requests for information.

<http://www.woodsland.com/woodsland/burnsauction>
email: brnzauctsv@aol.com

NOTES

