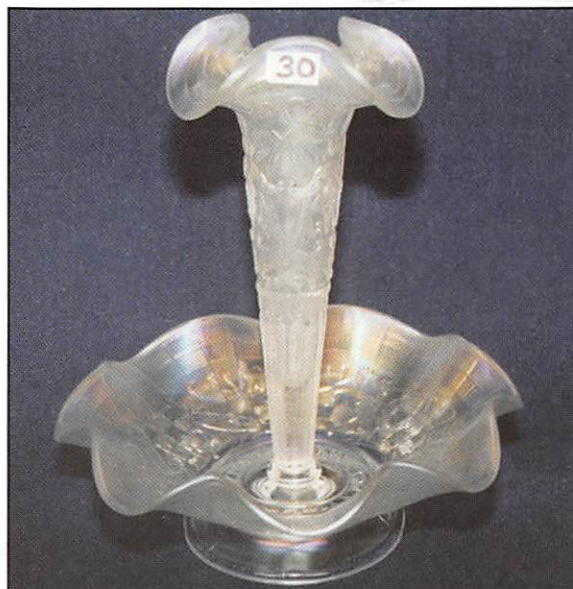
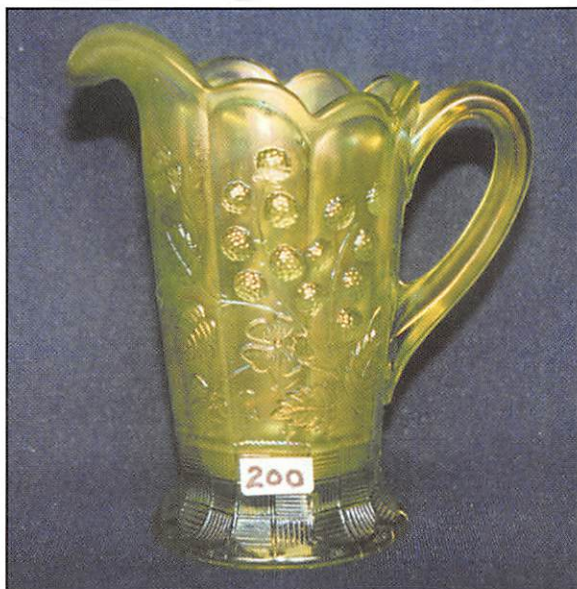
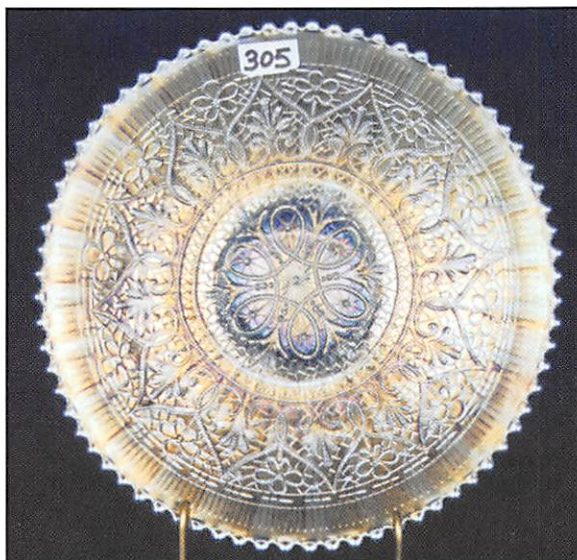


Pacific Northwest Carnival Glass Club Convention

AUCTION

Saturday, August 8, 1998 – 9:30 A.M.



Sweetbar Inn
7125 SW Nyberg Road • Tualatin, Oregon
Call (503) 692-5800 for reservations

JIM and JAN SEECK

Seeck Auctions

515-424-1116

Pacific Northwest Carnival Glass Club Auction

Saturday, August 8, 1998 -- 9:30 A.M.

Sweetbriar Inn -- Tualatin, Oregon

Head West All Carnival Glass Collectors!! Off we go to the beautiful Pacific Northwest for another great carnival glass convention. This year's auction consists of glass from the Dave and Kathy McGillivray collection from Canada, the Philip Florio Jr. collection from Wisconsin and other consignors added in to make an outstanding auction.

For information concerning the PNWCGC Convention call: Convention Chairman Larry Olson at 503-234-6705.

Terms: Cash or check w/proper I.D. NO BUYER'S PREMIUM.

ABSENTEE BID POLICY

1. Write-in bids will be accepted by sending the numbers of the item(s) desired and the amount bid on each to:
Seeck Auctions, PO Box 377, Mason City, Iowa 50402.
2. If known by Auction Company, bids may be done over the telephone. (515)424-1116.
3. There is a \$5 handling charge for each successful bid. Shipping and insurance charges are additional.
4. Bidders will be notified by phone if their bid(s) are successful. This call will be made 1 - 3 days after the auction.
5. Please have all bids in by **Tuesday, August 4th**. All bids (by mail or phone) after this date may not be carried out.
6. **Please place bids in the following increments: \$1 to \$300 - \$5 increments \$300 up - \$25 increments.**
7. **If you do not receive an item that sold for less than your bid, assume we cancelled your bid because the piece of glass had below average color, manufacture problem, damage or was not listed correctly.**
8. To receive price lists send: \$20 -- for this auction and next 7 auctions
\$5 -- for only this auction or individual auction (please specify)

Send to the above address. (please allow 2 - 3 weeks delivery for price lists) Make checks payable to: Jan Seeck.

You may now email us with your absentee bids! Our email address is: seeckauction@willowtree.com

Continue to include the numbers of the item(s) you would like to bid on and amount bid on each, please include your telephone number.

ALSO visit us at our website: <http://www.willowtree.com/~seeckauction>

- | | |
|---|---|
| ___ 1. Lattice & Grape tumbler - marigold | ___ 22. N's Peacock at Urn master IC bowl - ice blue - one of the better examples, a beauty, scarce |
| ___ 2. Coin Spot ruffled compote - peach opal | ___ 23. Panther master berry bowl - marigold - super, lots of pink irid. |
| ___ 3. Scales 6" plate - marigold | ___ 24. Panther ruffled sauce - marigold - pretty |
| ___ 4. Ripple 12" vase - marigold | ___ 25. Imperial Grape punch bowl & base - purple - a beauty, very very rare, an outstanding piece of Imperial |
| ___ 5. Ripple 10" vase - amber - scarce color, minor burst on bottom edge | ___ 26. Morning Glory JIP 10 1/2" vase - marigold - nice |
| ___ 6. Vintage 9" ruffled bowl - blue | ___ 27. Leaf & Beads rosebowl w/plain interior - marigold |
| ___ 7. N's Thin Rib 9 1/2" vase - purple | ___ 28. Wishbone ftd ruffled bowl - marigold - very nice |
| ___ 8. N's Grape & Cable breakfast creamer - purple - absolutely stunning | ___ 29. Lined Lattice 7" vase - purple - pretty |
| ___ 9. N's Grape & Cable breakfast sugar bowl - green | ___ 30. Wishbone epergne - white - extremely rare item w/frosty pink and blue irid., lily glued into base |
| ___ 10. Geo. W. Getts Pianos 6" advertising plate - amethyst - extremely rare advertising piece, a goodie! | ___ 31. Grape & Cable spt ftd 9" plate - green - strong irid. |
| ___ 11. Windflower ruffled bowl - marigold | ___ 32. Grape & Cable spt ftd 9" plate - marigold - nice |
| ___ 12. Scales CRE 6" round bowl - peach opal | ___ 33. Rustic 10" vase - marigold - nice |
| ___ 13. Stream of Hearts ruffled compote - marigold - nice | ___ 34. Little Flowers 10" 3 in 1 edge bowl - amethyst - nice |
| ___ 14. Plume Panels 11 1/2" vase - green | ___ 35. Dragon & Strawberry collar based ruffled bowl - green - super pretty and very rare |
| ___ 15. Two Flowers large ftd IC shaped bowl - lime green - very pretty, very scarce | ___ 36. Peacock & Grape ruffled bowl - amethyst - bronze irid. |
| ___ 16. Puzzle bon bon - white - base nick | ___ 37. Peacock & Grape ruffled bowl - |
| ___ 17. Puzzle bon bon - marigold - base nick | |
| ___ 18. Grape & Cable spooner - green | |
| ___ 19. Lattice & Points 10" vase - amethyst - pretty | |
| ___ 20. N's Peacock at Urn master IC bowl - ice green - a fantastic example of a scarce bowl | |
| ___ 21. N's Peacock at Urn IC sauces (2) - ice green - very scarce, choice | |

- marigold
- ___ 38. Butterfly & Berry 5 pc. water set - marigold - popular
- ___ 39. Apple Blossom Twigs ruffled bowl - marigold
- ___ 40. **Heavy Grape chop plate - purple - super pretty and scarce, Imperial purple is hot**
- ___ 41. Heavy Grape chop plate - marigold - pretty
- ___ 42. M'burg Blackberry Wreath 10" ruffled bowl - marigold - satin
- ___ 43. Chrysanthemum large ftd IC shaped bowl - blue - super
- ___ 44. Chrysanthemum large ftd IC shaped bowl - marigold - super
- ___ 45. **M'burg Peacock at Urn 10" 3 in 1 edge bowl - green - radium & super**
- ___ 46. N's Eight sided Bushel Basket - blue - nice
- ___ 47. N's Eight sided Bushel basket - marigold - nice
- ___ 48. Grape & Cable whiskey decanter w/stopper - purple - minor nick were stopper fits but nice, scarce
- ___ 49. Kittens ruffled bowl - marigold
- ___ 50. **Raspberry water pitcher - ice blue - fantastic color & irid. on this extremely rare & desirable piece**
- ___ 51. **Raspberry 6 pc. water set - purple - nice set & scarce**
- ___ 52. Butterfly & Berry master berry bowl - blue - pretty, has minor nick on toe
- ___ 53. Butterfly & Berry master berry bowl - marigold - nice
- ___ 54. Honeycomb rosebowl - peach opal - super
- ___ 55. Beaded Bullseye 7" vase - aqua - very rare color for this
- ___ 56. **Three Fruits 9" plate w/BW back - green - super, has red irid.**
- ___ 57. Three Fruits 9" plates w/BW back (2) - purple - choice
- ___ 58. **Grape & Cable 7 pc. water set - purple - a super nice set**
- ___ 59. Pansy low ruffled bowl - lavender - super pretty, close to a plate
- ___ 60. **Farmyard square ruffled bowl - purple - extremely rare & desirable, has gold and silver irid.**
- ___ 61. Orange Tree powder jar - marigold - nice
- ___ 62. Stag & Holly large ftd IC shaped bowl - marigold
- ___ 63. Grape & Cable 9" plate w/BW back - green - nice color
- ___ 64. Grape & Cable 9" plate w/BW back - purple - nice
- ___ 65. **Leaf Chain 9" plate - marigold - very dark & nice, a great plate**
- ___ 66. Leaf Chain 9" plate - green - scarce
- ___ 67. Heavy Grape 7" ruffled bowl - purple - super
- ___ 68. Dragon & Lotus 3 in 1 edge bowl - marigold
- ___ 69. Double Stemmed Rose dome ftd ruffled bowl - white - pretty
- ___ 70. **Rose Show ruffled bowl - green - very rare color & super, a dandy!**
- ___ 71. **Rose Show ruffled bowl - aqua opal - always a hot item, scarce**
- ___ 72. **Rose Show ruffled bowl - blue - very scarce color, nice**
- ___ 73. **Rose Show ruffled bowl - purple - absolutely stunning, as nice as I've seen, minor pinpoint on edge, no harm to this beauty**
- ___ 74. **Rose Show ruffled bowl - amethyst - has lavender irid. & is very nice, minor chip on edge**
- ___ 75. Open Rose 9" plate - green
- ___ 76. Open Rose 9" plate - clambroth
- ___ 77. **Good Luck ruffled bowl w/BW back - green - nice color**
- ___ 78. **Good Luck ruffled bowl w/ribbed back - blue - electric & super**
- ___ 79. **Good Luck ruffled bowl w/ribbed back - marigold - very pretty**
- ___ 80. **Jeweled Heart 10" ruffled bowl w/rayed interior - purple - stunning, fantastic, super, etc.**
- ___ 81. Holly & Berry handled nappy - peach opal
- ___ 82. **Scroll Embossed 9" plate - purple - super & scarce**
- ___ 83. **Scroll Embossed 9" plate - lavender - super pretty**
- ___ 84. Scroll Embossed 9" plate - green
- ___ 85. **Stippled Peacocks PCE bowl - blue - very scarce, nice**
- ___ 86. **Stippled Peacocks PCE bowl - pastel marigold - super yellow irid., could call this ginger ale or clambroth, neat**
- ___ 87. Strawberry card tray shaped bon bon - blue - super!
- ___ 88. **Springtime 4 pc. table set - marigold - very rare set, dark & beautiful, creamer is slightly lighter**
- ___ 89. Ripple 4 1/2" miniature vase - marigold - a little cutie
- ___ 90. **Round Up 9" plate - lavender - super, super irid., a very pretty piece**
- ___ 91. **Round Up 9" plate - purple - pretty blue irid., nice**
- ___ 92. Luster Rose spooner - purple - scarce
- ___ 93. Luster Rose creamer - purple - nice
- ___ 94. Cherries & Little Flowers 7 pc. enameled water set - blue
- ___ 95. **Stippled Three Fruits PCE bowl - blue - electric & fantastic! very rare & desirable, has minor chip on edge**
- ___ 96. Illusion bon bon - marigold - dark & nice
- ___ 97. N's Bushel Basket - ice green - scarce & nice
- ___ 98. N's Bushel Basket - marigold - nice

- ___ 99. Inverted Feather cracker jar - green - nice example, scarce
- ___ 100. Large ruffled top vase - red stretch
- ___ 101. M'burg Blackberry Wreath 9" IC shaped bowl - marigold - radium, nice, tough size
- ___ 102. Holly 9" plate - white - scarce & nice
- ___ 103. Holly 9" plate - marigold - nice
- ___ 104. Peacock at the Fountain spooner - marigold
- ___ **105. Hearts & Flowers ruffled bowl - ice green - pretty & very scarce**
- ___ 106. Hearts & Flowers ruffled bowl - ice blue - scarce
- ___ 107. Carolina Dogwood round bowl - peach opal - pretty
- ___ 108. Caroline Dogwood ruffled bowl - marigold on milkglass - scarce
- ___ 109. M'burg Holly Sprig 6" CRE ruffled bowl - amethyst - radium, great color
- ___ **110. Central Shoe Store advertising ruffled bowl - amethyst - extremely rare & pretty, a very good example**
- ___ 111. Daisy & Little Flowers enameled tumbler - blue
- ___ 112. Fruits & Flowers bon bon - blue
- ___ 113. Fruits & Flowers bon bon - marigold
- ___ 114. Sunflower spt ftd ruffled bowl - purple
- ___ **115. Stippled Grape & Cable 9" plate - green - very, very rare plate & nice**
- ___ 116. Grape & Cable punch bowl & base - purple - very pretty, chip on one point
- ___ 117. Fenton's Three Fruits 12 sided plate - amethyst
- ___ 118. Orange Tree fruit bowl - marigold - a nice example
- ___ **119. Dragon & Lotus IC shaped bowl - marigold on moonstone - very rare bowl, nice**
- ___ **120. Dragon & Lotus IC shaped bowl - red - cherry red color, rare**
- ___ 121. Dragon & Lotus IC shaped bowl - green
- ___ 122. Dragon & Lotus IC shaped bowl - amethyst
- ___ **123. Grape & Cable large size fruit bowl - marigold - hard to find size**
- ___ 124. Magnolia & Drape 7 pc. enameled water set - marigold
- ___ **125. Stippled Strawberry PCE bowl - green - very rare item, not many found w/stippling, pretty**
- ___ **126. Stippled Strawberry PCE bowl - blue - very rare w/PCE**
- ___ **127. Stippled Strawberry PCE bowl - marigold - very dark & scarce**
- ___ 128. April Showers 11" CRE vase - marigold
- ___ 129. April Showers 10" vase w/Peacock Tail interior - amethyst
- ___ **130. Fenton's Fine Rib 9" vase - red - very pretty, nice**
- ___ 131. Fenton's Fine Rib 10" vase - light aqua
- ___ - has yellowish marigold irid., a neat looking vase
- ___ 132. Blackberry Spray 2 sides up hatshape - red - pretty
- ___ 133. Maple Leaf 7 pc. water set - marigold - nice matching set
- ___ 134. Buzz Saw large size cruet - green - no stopper
- ___ **135. Peacocks 9" plate w/plain back - green - great example, always a desirable plate**
- ___ **136. Peacocks 9" plate w/plain back - ice green - super**
- ___ **137. Peacocks 9" plate w/plain back - white - also super, loaded w/irid.**
- ___ 138. Peacock at the Fountain 5 pc. berry set - marigold - dark & pretty, minor chip on edge of master berry bowl
- ___ 139. Inverted Strawberry master berry bowl - marigold - pretty
- ___ **140. Peacock at the Fountain 8 pc. punch set - marigold - dark color w/matching cups, very scarce & highly desirable**
- ___ 141. Grape & Cable card tray - purple
- ___ **142. Concord ruffled bowl - green - very scarce & desirable**
- ___ 143. Lotus & Grape bon bon - vaseline - has marigold overlay, scarce
- ___ 144. Imperial Grape wine decanter - purple - fantastic
- ___ **145. Holly JIP CRE hatshape - red - very, very hard to find shape, nice**
- ___ 146. Grape & Cable PCE bowl w/BW back - green
- ___ **147. Horse Medallion ftd nut bowl - vaseline - super pretty example w/nice marigold overlay**
- ___ 148. Fenton's Peacock at Urn ruffled bowl - blue - nice
- ___ 149. Fenton's Peacock at Urn ruffled bowl - marigold
- ___ **150. Stippled Three Fruits ruffled bowl - sapphire - extremely rare bowl & super nice!!!**
- ___ 151. Ripple 11" vase - marigold
- ___ **152. Fenton's Peacock at Urn IC shaped bowl - marigold on moonstone - unbelievably rare piece, not many around**
- ___ **153. Fenton's Peacock at Urn IC shaped bowl - blue - fantastic super dooper irid.!!**
- ___ 154. Fenton's Peacock at Urn IC shaped bowl - marigold - nice color
- ___ **155. Dragon & Strawberry ftd ruffled bowl - marigold -very scarce w/great color**
- ___ 156. Imperial Grape low ruffled bowl - marigold - most would call this a plate
- ___ **157. Zippered Loop lamp - marigold - 5 7/8" base, 10" tall, very nice**
- ___ 158. Petal & Fan large ruffled bowl - peach

- opal - outstanding opal & color
- ___ 159. Maple Leaf water pitcher - blue - very scarce color
- ___ 160. **Peacock at the Fountain ruffled compote - ice blue - extremely rare & desirable, a tough one to get**
- ___ 161. **Peacock at the Fountain ruffled compote - white - very nice example, scarce**
- ___ 162. Gothic Arches 14" vase - marigold - good color*all the way down
- ___ 163. **Peacock at the Fountain ruffled fruit bowl - blue - very pretty, has nick on foot & flake on side of flute**
- ___ 164. **Peacock at the Fountain fruit bowl - marigold - very nice**
- ___ 165. **Tree Trunk 10 1/2" vase - aqua opal - lots of opal w/pretty irid., beautiful & rare**
- ___ 166. Tree Trunk 10" vase - white opal - not carnival
- ___ 167. Nippon PCE bowl - ice blue - super
- ___ 168. **N's Corn vase w/stalk base - white - scarce, nice**
- ___ 169. Malaga rosebowl - marigold - scarce
- ___ 170. **N's Peacock at Urn chop plate - purple - nice example, very rare**
- ___ 171. Leaf Tiers 6 pc. berry set - marigold
- ___ 172. M'burg Hobstar & Feather giant rosebowl - green - very pretty & rare, stem has been broken & glued back together, nice shelf piece
- ___ 173. **Captive Rose 9" plate - blue - very scarce & desirable**
- ___ 174. Fruits & Flowers 7" ruffled bowl - blue - electric & nice, scarce in this color
- ___ 175. **Stippled Three Fruits 9" plate - horehound - very pretty & rare, has minor nick on side of a point**
- ___ 176. **Stippled Three Fruits 9" plate w/ribbed back - lavender - super pretty irid., a real dandy!**
- ___ 177. **Stippled Three Fruits 9" plate w/ribbed back - purple - fantastic irid., one of the best we've seen**
- ___ 178. **Stippled Three Fruits 9" plate w/ribbed back - pastel marigold - lots of pink irid., a beauty**
- ___ 179. Stippled Three Fruits 9" plate w/ribbed back - marigold - scarce
- ___ 180. Thin Rib mid-size 12" vase - purple - scarce
- ___ 181. Thin Rib mid-size 12" vase - marigold - scarce
- ___ 182. Dugan's Cherries ruffled bowl - peach opal - a very scarce bowl, nice
- ___ 183. Grape & Cable bon bon - blue - rare color & pretty
- ___ 184. N's Town Pump - purple - epoxy at bottom of handle, nice shelf piece
- ___ 185. **Dreibus Parfait Sweets advertising ruffled bowl - amethyst - pretty, rare**
- ___ 186. Miniature Morning Glory 7 1/2" vase - smoke
- ___ 187. Miniature Morning Glory 6" vase - green
- ___ 188. Miniature Morning Glory 6 1/2" vase - marigold
- ___ 189. Captive Rose CRE ruffled compote - green - has twisted stem, scarce
- ___ 190. **Pony 10 ruffled bowl - ice green - super pretty, a nice piece, RARE!**
- ___ 191. **Pony 6 ruffled bowl - aqua - extremely rare color**
- ___ 192. **Pony 6 ruffled bowl - purple - nice, scarce**
- ___ 193. Rose Show ruffled bowl - aqua opal - very nice, has 2 chips on base
- ___ 194. Tiger Lily water pitcher - marigold - super w/multi-colored irid.
- ___ 195. **N's Poppy Pickle dish - amethyst - great color & quite rare**
- ___ 196. N's Poppy Pickle dish - green - very pretty, scarce
- ___ 197. N's Poppy pickle dish - blue - electric
- ___ 198. Plaid ruffled bowl - marigold
- ___ 199. M'burg Peacock at Urn master berry bowl - marigold - satin, chip on base
- ___ 200. **Raspberry milk pitcher - lime green - absolutely incredible, as pretty as you can imagine, loaded with irid.!**
- ___ 201. Raspberry milk pitcher - green - very pretty, scarce
- ___ 202. Raspberry tumbler - green
- ___ 203. **Grape & Cable dresser tray - green - very, very pretty example, hard to find in green**
- ___ 204. Sailboats round sauce - aqua - scarce
- ___ 205. **Rustic 19 1/2" funeral vases (2) - blue - very rare pair, nice, choice**
- ___ 206. **Rustic 17" funeral vase - marigold - has two points at top that are connected, looks like pour spout, nick on edge**
- ___ 207. M'burg Nesting Swan ruffled bowl - marigold - satin & nice
- ___ 208. **Four Flowers Variant 9" plate - honey amber - very scarce color, pretty**
- ___ 209. Round Up ruffled bowl - peach opal - strong color
- ___ 210. **Autumn Acorn 9" plate - green - very rare & desirable, wonderful example**
- ___ 211. Three Fruits ruffled bowl w/BW back - marigold
- ___ 212. **Wishbone & Spades 6" plate - purple - super blue irid., nice**
- ___ 213. Fenton's Grape & Cable fruit bowl w/Persian Medallion interior - amethyst - has great color, has manufacture separation on foot
- ___ 214. Fenton's Grape & Cable fruit bowl w/Persian Medallion interior - marigold - very dark

- ___ 215. **Rose Show 9" plate - green - extremely rare & nice, has minor nick on base, no harm**
- ___ 216. Strawberry 9" plate w/BW back - amethyst - nice even irid.
- ___ 217. Strawberry 9" plate w/BW back - marigold - dark
- ___ 218. Grape & Cable 11" ruffled bowl - marigold - scarce
- ___ 219. M'burg Holly Whirl ruffled bowl - amethyst - radium & nice
- ___ 220. **Hearts & Flowers PCE bowl - ice blue - very rare & nice, a tough bowl**
- ___ 221. **Hearts & Flowers PCE bowl - amethyst - very pretty & rare**
- ___ 222. **Hearts & Flowers PCE bowl - marigold - super pretty & very rare**
- ___ 223. Lattice & Daisy 8" vase - blue - rare color, has damage on base
- ___ 224. Stag & Holly giant rosebowl - marigold - very nice, scarce
- ___ 225. **Heart & Vine 9" plate - blue - an outstanding example of a rare plate**
- ___ 226. Grape & Cable Humidor - marigold - chips on inside of lid
- ___ 227. **M'burg Night Stars bon bon - green - outstanding example of a rare piece, radium**
- ___ 228. Daisy Cut bell - marigold - very scarce, nice
- ___ 229. **Stippled Strawberry ruffled bowl - marigold - very pretty & scarce**
- ___ 230. **Hearts & Flowers ruffled compote - ice blue - very scarce & desirable, hard color to get**
- ___ 231. **Hearts & Flowers ruffled compote - blue - scarce, very pretty**
- ___ 232. **Hearts & Flowers ruffled compote - marigold - dark & nice**
- ___ 233. Fenton's Grape & Cable ruffled bowl - red - very scarce
- ___ 234. **Tree Trunk mid-size 12" vase w/plunger base - amethyst - rare w/plunger base, nice**
- ___ 235. **Peacocks 9" plate w/ribbed back - marigold - very dark w/lots of pink irid.**
- ___ 236. Cosmos Variant ruffled bowl - blue
- ___ 237. **Persian Medallion bon bon - red - very nice & very scarce**
- ___ 238. Brooklyn Bridge ruffled bowl - marigold - always in demand
- ___ 239. Orange Tree standard size mug - red - scarce, very desirable
- ___ 240. **Lattice & Poinsettia ftd ruffled bowl - horehound - has pretty irid. in an extremely rare color, only a few known**
- ___ 241. **Lattice & Poinsettia ftd ruffled bowl - purple - a super dandy, very rare**
- ___ 242. **Lattice & Poinsettia ftd ruffled bowl - pastel marigold - scarce & desirable**
- ___ 243. Peacock & Dahlia 6 1/2" IC shaped bowl - blue - very scarce
- ___ 244. Grape & Cable sweatmeat - purple - nice
- ___ 245. **M'burg Courthouse ruffled bowl - amethyst - radium & pretty, very desirable**
- ___ 246. Acanthus chop plate - marigold - scarce
- ___ 247. Holly ruffled hatshape - red - cherry red & nice
- ___ 248. Persian Medallion 9" plate - blue - scarce
- ___ 249. Waterlily ftd ruffled sauce - aqua - a cutie
- ___ 250. **Ten Mums 3 in 1 edge bowl - green - super, very scarce**
- ___ 251. Grape & Cable hatpin holder - purple - always in demand
- ___ 252. Grape & Cable hatpin holder - marigold - dark
- ___ 253. **Poppy Show 9" plate - marigold - great color, has 2 nicks on base**
- ___ 254. Stippled Good Luck ruffled bowl w/ribbed back - pastel marigold - lots of pink irid., super!
- ___ 255. **Vintage fernery - red - has lots of red irid, rare**
- ___ 256. Drapery candy dish - ice blue - has minor rough feet
- ___ 257. **Old Rose Distillery Stippled Grape & Cable 9" plate - green - a nice rare plate & desirable**
- ___ 258. Heavy Grape 8" plate - purple - super!
- ___ 259. Vintage 7 1/2" plate - amethyst - pretty, scarce
- ___ 260. Dragon & Lotus ruffled bowl - vaseline - as nice as I've seen, marigold overlay
- ___ 261. Dragon & Lotus ruffled bowl - lavender
- ___ 262. Dragon & Lotus ruffled bowl - blue - chip on edge
- ___ 263. Basketweave Open Edge ruffled basket - red - scarce
- ___ 264. **Peacocks ruffled bowl - amethyst - very scarce & nice**
- ___ 265. **Diamond Points 10" vase - aqua opal - lots of opal & pretty**
- ___ 266. Many Fruits punch cups (6) - purple - all super, choice
- ___ 267. **M'burg Peacock at Urn master IC bowl - amethyst - satin, nice**
- ___ 268. **Stippled Grape & Cable PCE bowl - ice blue - hard to see buff mark on outside edge, rare**
- ___ 269. Grape Arbor ftd fruit bowl - marigold
- ___ 270. **Wreath of Roses 9 pc. punch set - marigold - very pretty set**
- ___ 271. April Showers 6" squatty vase w/Peacock Tail interior - blue
- ___ 272. N's Peacock at Urn IC sauce - blue
- ___ 273. Orange Tree 9" plate - white - scarce plate

- ___ 274. Grape & Cable Variant 9" plates w/plain backs (2) - marigold - choice
- ___ **275. Plaid 9" plate - marigold - extremely rare, edges turn up just slightly, very unusual**
- ___ 276. M'burg Hobnail Swirl rosebowl - marigold - dark & fabulous, minor pinpoint on edge
- ___ 277. Butterflies hatpin - purple
- ___ 278. Scarab hatpin - purple
- ___ 279. Rooster hatpin w/painted background - blue
- ___ 280. Beaded Cable rosebowl - marigold - dark
- ___ 281. M'burg Whirling Leaves tri-cornered crimped edge bowl - marigold - radium, scarce shape
- ___ 282. Autumn Acorn 3 in 1 edge bowl - marigold
- ___ 283. Acanthus deep round bowl - smoke - pretty
- ___ 284. Four Pillars 10" vase - aqua opal
- ___ **285. N's Butterfly bon bon - smoke - one of 2 or 3 known, very rare & nice**
- ___ 286. Heavy Iris tankard water pitcher - marigold
- ___ 287. Heavy Iris tumblers (2) - marigold - choice
- ___ 288. Fine Cut & Roses rosebowl - white - frosty & super, fabulous irid., on the nice rosebowl, one foot has been polished slightly
- ___ 289. Fine Cut & Roses rosebowl - amethyst - usual feet
- ___ **290. Tornado large size vase - purple - scarce & nice**
- ___ 291. Leaf & Beads rosebowl w/rayed interior - pastel marigold
- ___ 292. Leaf & Beads nut bowl w/rayed interior - pastel marigold
- ___ 293. Persian Garden large IC bowl - white - super pretty
- ___ 294. Vintage CRE bowl - blue
- ___ 295. M'burg Sunflower pintray - amethyst - minor nick on backside of leaf, nice & very scarce
- ___ 296. Three Fruits PCE bowl - light olive green - pretty, has chip on backside of flute
- ___ 297. Beads 6 sided plate - amethyst
- ___ 298. Cherry Chain large size ruffled bowl - blue
- ___ 299. Ski Star large ruffled bowl - peach opal
- ___ **300. Embroidered Mums ruffled bowl - blue - very scarce w/very nice color**
- ___ **301. Embroidered Mums ruffled bowl - marigold - unbelievable, a fantastic bowl! everyone will drool**
- ___ 302. Big Basketweave 10 1/2" vase - pastel blue - darker than ice blue, lighter than celest, scarce
- ___ 303. Pulled Loop 10" vase - peach opal
- ___ 304. Panelled Dandelion tankard water pitcher - amethyst - nick on corners of base, scarce
- ___ **305. Hearts & Flowers 9" plate - white - extremely rare plate w/super color & irid., tough to find**
- ___ **306. Hearts & Flowers 9" plate - amethyst - super even irid., pretty!!**
- ___ 307. Grape & Cable hatshape whimsey - marigold - made from tumbler
- ___ **308. Isaac Benesch & Sons advertising ruffled bowl - amethyst**
- ___ 309. Orange Tree shaving mug - red - irid. on inside of mug only
- ___ 310. Acorn Burrs 8 pc. punch set - marigold - one flute broke & glued, pretty set
- ___ 311. N's Stippled Peacock at Urn ruffled bowl - marigold - very rare, this is the master IC bowl ruffled, manufacture problem in ruffle
- ___ 312. Peacock & Grape spt ftd IC shaped bowl - amethyst - pretty
- ___ 313. Frosted Block 7 1/2" square plate - clambroth - scarce
- ___ 314. Three Fruits dome ftd ruffled bowl - horehound - scarce color & nice
- ___ **315. Loganberry vase - purple - super pretty irid. on this rare vase, Imperial at its best**
- ___ 316. Loganberry vase - green - scarce
- ___ 317. Raindrops dome ftd 3 in 1 edge bowl - peach opal
- ___ 318. Fenton's 8 3/4" pair of candlesticks - olive green
- ___ 319. Orange Tree ruffled bowl - marigold
- ___ **320. Poppy Show vase - marigold - rare & desirable, pretty color & irid. all the way down**
- ___ 321. M'burg Holly Sprig Variant 8" CRE bowl - amethyst - radium, rare w/great color
- ___ 322. Windmill milk pitcher - marigold
- ___ 323. Honeycomb kerosene lamp - marigold
- ___ 324. Interior Swirl tankard water pitcher - marigold
- ___ 325. Daisy dome ftd bowl - peach opal
- ___ 326. Knotted Beads CRE 10" vase - blue
- ___ 327. Fenton's Fine Rib 10" vase - red - minor nicks on top ruffle
- ___ 328. Beaded Cable candy dish - green - slight wear on feet
- ___ 329. Carnival Hobstar cracker jar - marigold
- ___ 330. Single Flower Framed CRE flattened out bowl - peach opal
- ___ 331. Two Seventy ruffled compote - peach opal
- ___ 332. HOACGA Corn vase - red

Thank You!

Seeck Auctions

P.O. Box 377
Mason City, Iowa 50402

First Class
U.S. Postage
PAID
Mason City, IA
Permit No. 448

