



# BURNS

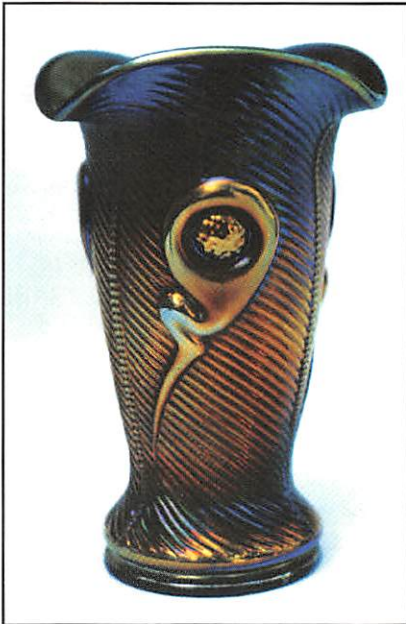
AUCTION SERVICE

## A.C.G.A. Convention Auction

9:30 am, Friday, July 31, 1998

Previews: Thursday evening - Time to be announced

Friday: 8:00 am - 9:30 am



*at the*

**Sheraton Lansing Hotel**

**925 S. Creyts Rd.**

**Lansing, Michigan 48917**

*Located off Exit 1 of I-496*

**(517) 323-7100**

*or for reservations*

**1-800-325-3535**



This year's A.C.G.A. Convention Auction looks to be one of the very best we've ever offered to the collectors that will attend this annual function. There is something for everyone in just about every facet of the Hobby. There is great selection from Tumblers to Punch Sets & everything in between. This year's selection of glass comes from two very prominent collections from Ohio and New York State. We hope you will enjoy the selection we will offer to you and believe me when I tell you we selected the glass for this Auction with the ACGA membership in mind. Hope you have a great time!

The Sheraton Lansing Hotel will host the event. We hope to have a special preview on Thursday evening and if you should decide to attend the convention, there will be events covering most of the week, culminating with the auction on Friday morning and the Convention Banquet on Friday evening. Should be a great time — hope ya'll will attend.

For further information on the Convention you can call President Ed Radcliff at (304) 375-6396 or call the motel direct for reservations only at 1-800-325-3535.

Mail, e-mail, or phone bids are due by Monday July 27, 1998. After that the Auction Company will be at the hotel, should you have any questions about the listing. Hope you all have a great summer — Take Care!

### Burns Auction Service

Tom Burns  
109 E. Steuben St.  
Bath, New York 14810  
(607) 776-7942

Bill Richards  
44 Water St., Poland, OH 44514  
(330) 757-2001  
FAX (330) 757-4917

Bill Richards, III  
2253 Country Lane  
Poland, OH 44514  
(330) 755-2620

Maid Bids honored under the following conditions:

1. No deposit required. Bidders will take full responsibility to honor any and all bids we execute for them. Payment in full plus postage and handling required after notification and before we ship any item to them.
2. Items are bid on in perfect condition with average or above average iridescence OR as listed in the brochures. Bids will not be carried out when damage on an item has been found during the auction. **PEOPLE PRESENT AT AUCTION ARE RESPONSIBLE FOR FINDING ANY PINHEADS, WEAR, SPOTTINESS, MANUFACTURER'S DEFECTS OR ANY OTHER MINOR FLAWS, ETC.**
3. Successful bidders will be notified by collect call from the auctioneer (**so be sure to include phone number**).
4. Phone inquiries about the glass or any other questions are welcome.
5. If you have some other person at the auction bidding for you, they must pay for the item before taking it.
6. Any terms or conditions given the day of the auction will supersede any previously published information.
7. Mail, Email, FAX and Phone bids due by Monday, July 27, 1998.

- |  |   |
|--|---|
| <p>___ 1. Fenton Pastel Swan Master Salt - Celeste Blue</p> <p>___ 2. Fenton Pastel Swan Master Salt - Ice Green</p> <p>___ 3. Dugan Pastel Swan Master Salt - Dk. Mari. (rare and desirable; about as dark as they get; 2 small chips on inside edge)</p> <p>___ 4. Czech (?) Crackle (or Tree of Life) Perfume Bottle and Stopper - Lt. Mari. (unusual - has bright blue daubber)</p> <p>___ 5. <b>WESTMORELAND WILD BERRY COVERED POWDER JAR - MARI. (RARE ITEM; NICE COLOR; VERY TOUGH TO FIND)</b></p> <p>___ 6. Westmoreland Stork ABC Child's Cereal Bowl - Mari. (nice color and detail)</p> <p>___ 7. <b>EUROPEAN CLASSIC ARTS STRAIGHT UP ROSE BOWL - MARI. (RARE - UNUSUAL; HAS BLUE STAIN ON PATTERN)</b></p> <p>___ 8. <b>EUROPEAN DAISY BLOCK ROW BOAT - AMY. (RARE COLOR FOR THIS PATTERN; NICE ITEM)</b></p> <p>___ 9. <b>EUROPEAN DRAPERY VARIANT SMALL HANDLED WATER PITCHER - DK. MARI. (ABSOLUTELY FANTASTIC IRID. - A SUPER EXAMPLE)</b></p> <p>___ 10. <b>N PEACOCK AT THE FOUNTAIN PUNCH BOWL AND BASE - LIME ICE GREEN TOP, ICE GREEN BASE (EXTREMELY RARE ITEM IN A VERY RARE COLOR; BASE IS A LIGHTER SHADE OF PASTEL)</b></p> <p>___ 11. <b>(4) N PEACOCK AT THE FOUNTAIN HANDLED PUNCH CUPS - LIME ICE GREEN (VERY RARE ITEMS; A TAD SILVERY - SELLING CHOICE)</b></p> <p>___ 11A <b>N PEACOCK AT THE FOUNTAIN HANDLED PUNCH CUP - AQUA OPAL. (VERY RARE AND DESIRABLE; HAS PASTEL IRID.; HAS SMALL CHECK IN BOTTOM BY HANDLE)</b></p> <p>___ 12. N Peacock at the Fountain Covered Butter Dish - Pur. (very scarce; really nice color and irid.; nice)</p> <p>___ 13. N Peacock at the Fountain Covered Sugar Bowl - Pur. (another scarce item with nice color and irid.)</p> <p>___ 14. N Peacock at the Fountain Handled Creamer - Pur. (scarce; very nice color and irid.)</p> | <p>___ 15. N Peacock at the Fountain Spooner - Pur. (scarce; nice color and irid.)</p> <p>___ 16. <b>N PEACOCK AT THE FOUNTAIN 7 PC. BERRY SET - BLUE (VERY RARE SET IN THIS COLOR, FIRST COMPLETE SET I'VE SEEN; VERY TOUGH TO FIND)</b></p> <p>___ 17. <b>N PEACOCK AT THE URN LARGE ICE CREAM BOWL - ICE GREEN (VERY RARE AND DESIRABLE; GREAT IRID. AND DETAIL - NICE)</b></p> <p>___ 18. <b>N PEACOCK AT THE URN ALL OVER STIPPLED LARGE ICE CREAM BOWL - PASTEL MARI. (RARE BASE COLOR - SOME WOULD CALL IT SMOKE; NICE IRID.)</b></p> <p>___ 18A <b>N PEACOCK AT THE URN LARGE ICE CREAM BOWL - PUR. (EXCELLENT EXAMPLE WITH SUPER MULTI-COLORED IRID.)</b></p> <p>___ 18B N Peacock at the Urn Ind. Ice Cream Bowl - Pur. (nice satiny irid.)</p> <p>___ 19. <b>N PEACOCKS PLATE WITH RIBBED EXTERIOR - LIME ICE GREEN (RARE BASE COLOR; QUITE A NICE ITEM; NICE IRID.)</b></p> <p>___ 20. <b>N PEACOCKS RUFFLED BOWL WITH RIBBED EXTERIOR - AQUA OPAL. (SUPER IRID. AND GREAT OPAL. - REALLY IMPRESSIVE)</b></p> <p>___ 21. <b>N PEACOCKS PLATE WITH RIBBED EXTERIOR - WHITE (VERY SCARCE AND DESIRABLE; GREAT IRID.; NICE)</b></p> <p>___ 21A <b>N WATERLILY AND CATTAILS TUMBLER - ELEC. BLUE (EXTREMELY RARE; GREAT COLOR AND DETAIL - ETCHED "NETTIE PITZER")</b></p> <p>___ 22. <b>N G &amp; C TUMBLER - ICE GREEN (VERY RARE AND DESIRABLE; GREAT COLOR AND IRID.)</b></p> <p>___ 23. <b>N ORIENTAL POPPY TUMBLER - ICE GREEN (RARE AND VERY DESIRABLE; DARN TOUGH ITEM TO FIND!)</b></p> <p>___ 24. <b>N ORIENTAL POPPY TUMBLER - ICE BLUE (ANOTHER RARE ITEM - NICE COLOR AND IRID.)</b></p> |
|--|---|

25. **N ORIENTAL POPPY TANKARD WATER PITCHER WITH RIBBED INTERIOR - ELEC. BLUE (ABSOLUTELY SUPER COLOR AND IRID.; BRIGHT, PERFECT AND RARE)**
26. N Oriental Poppy Tumbler - Blue (very scarce item; nice color and irid.)
27. **N ORIENTAL POPPY 7 PC. TANKARD WATER SET - WHITE (EXTREMELY RARE TO FIND A COMPLETE SET; SUPER IRID. - NICE AND FROSTY)**
28. N Grape Arbor 6 Ruffled Hat from Tumbler - White (rare shape for this item in this color; nice)
29. N Grape Arbor 7 pc. Tankard Water Set - Dk. Mari. (super dark color and irid.; a nice set)
30. **N PEACH 4 PC. TABLE SET - WHITE / GOLD TRIM (RARE, COMPLETE SET THAT MATCHES WELL; CREAMER HAS DEEP STRAW MARK WITH DEPTH BY HANDLE)**
31. (4) N Peach Tumblers - Elec. Blue (very scarce; nice color; selling choice)
32. N Wishbone ftd. Ruffled Bowl with Ruffles and Rings Exterior - Mari. (average color)
33. **N STRAWBERRY PLATE WITH PLAIN EXTERIOR - GREEN (VERY SCARCE; NICE COLOR AND IRID.)**
34. N Strawberry Plate with Plain Exterior - Pur. (nice color and irid.; one point not filled in)
- 34A **N MEMPHIS 8 PC. FRUIT BOWL SET - PUR. (OUTSTANDING SET WITH LOTS OF REDS AND BLUE)**
35. **N HEART AND FLOWERS STEMMED RUFFLED COMPOTE WITH RIBBED EXTERIOR - MARI. / CUSTARD (EXTREMELY RARE AND VERY DESIRABLE; AS NICE AN EXAMPLE AS I'VE SEEN; SUPER)**
36. **N HEART AND FLOWERS STEMMED RUFFLED COMPOTE WITH RIBBED EXTERIOR - AQUA OPAL. (RARE AND ALWAYS VERY DESIRABLE; QUITE ATTRACTIVE)**
37. **N HEART AND FLOWERS STEMMED RUFFLED COMPOTE WITH RIBBED EXTERIOR - ELEC. BLUE (EXCELLENT EXAMPLE WITH BRIGHT BLUE HIGHLIGHTS - SUPER)**
38. **N HEART AND FLOWERS STEMMED RUFFLED COMPOTE WITH RIBBED EXTERIOR - PUR. (ANOTHER REALLY NICE EXAMPLE; NICE GOLD HIGHLIGHTS)**
39. **N HEART AND FLOWERS STEMMED RUFFLED COMPOTE WITH RIBBED EXTERIOR - DK. MARI. (SUPER EXAMPLE - SORTA PUMPKIN COLORED - NICE)**
- 39A **N HEARTS AND FLOWERS STEMMED RUFFLED COMPOTE - ICE GREEN (RARE AND DESIRABLE; IRID. A BIT SILVERY)**
40. **N HEART AND FLOWERS PLATE WITH RIBBED EXTERIOR - DK. MARI. (RARE AND DESIRABLE; PUMPKIN ABOUT 3/4 OF THE WAY!)**
- 40A **N HEART AND FLOWERS RUFFLED BOWL WITH RIBBED EXTERIOR - PUR. (VERY SCARCE AND DESIRABLE; HAS BLUE AND RED HIGHLIGHTS)**
41. N Strawberry 8 Ruffled Bowl with Basketweave Exterior - Green (nearly emerald green - super color & irid.)
42. N Strawberry 8 Ruffled Bowl with Basketweave Exterior - Mari. (nice bright satiny finish)
43. N Three Fruits Plate with Basketweave Exterior - Mari. (nice average color and irid.)
44. N Wishbone Tumbler - Dk. Mari. (nice dark color with normal irid.)
45. **N WISHBONE 8 RUFFLED FTD. BOWL WITH RUFFLES AND RINGS EXTERIOR - ICE BLUE (YOU'D BE HARD PRESSED TO FIND A BETTER EXAMPLE - THIS ONE IS RIGHT UP THERE AT THE TOP)**
- 45A **N GOOD LUCK BOWL WITH PIE CRUST EDGE AND RIBBED EXTERIOR - ELEC. BLUE (SUPER COLOR AND IRID.; SHAPE IS DEEPER THAN NORMAL)**
- 45B **N GOOD LUCK BOWL WITH PIE CRUST EDGE AND BASKETWEAVE EXTERIOR - PUR. (SCARCE; NICE COLOR AND IRID.)**
- 45C **N GOOD LUCK BOWL WITH PIE CRUST EDGE AND BASKETWEAVE EXTERIOR - GREEN (VERY SCARCE AND DESIRABLE; HAS YELLOW AND BLUE HIGHLIGHTS)**
- 45D N Good Luck Bowl with Pie Crust Edge and Ribbed Exterior - Dk. Mari. (a beauty with pumpkin color; not sure of exterior)
- 45E N Good Luck Bowl with Pie Crust Edge and Basketweave Exterior - Mari. (nice color; scarce)
46. N Singing Birds Handled Mug - Blue (very scarce; nice detail and irid.)
47. N Singing Birds Handled Mug - Mari. (super color and irid.; an excellent example)
48. N Beaded Cable ftd. Ruffled Rose Bowl - Amy. (average; goldish highlights)
49. N Beaded Cable ftd. Ruffled Rose Bowl - Mari. (nice color and irid.)
- 49A **N LEAF AND BEADS FTD. ROSE BOWL - RENNINGER BLUE (RARE AND VERY DESIRABLE; HAS ELEC. BLUE HIGHLIGHTS; A GREAT EXAMPLE)**
50. **N FINE CUT AND ROSES FTD. ROSE BOWL WITH FANCY INTERIOR - AQUA OPAL. (FANTASTIC EXAMPLE; NICE BUTTERSCOTCH OVERLAY)**
51. N Fine Cut and Roses ftd. Rose Bowl with Plain Interior - Green (excellent example with great irid.; nice)
52. N Fine Cut and Roses ftd. Rose Bowl with Plain Interior - Amy. (has odd Ruffle - not iridized on inside)
53. N Daisy and Plume Stemmed Ruffled Rose Bowl - Lt. Mari.
54. N Eight Sided Handled Bushel Basket - Pur. (very scarce; nice base color; average irid.)
55. **N ROUND HANDLED BUSHEL BASKET - AQUA OPAL. (ALMOST WANTS TO BE BLUE OPAL.; GREAT IRID.)**
56. N Round Handled Bushel Basket - Ice Green (very scarce; nice color and irid.)
57. N Round Handled Bushel Basket - Amy. (scarce; goldish irid.)
58. N Nippon 8 Ruffled Bowl with Basketweave Exterior - Amy. (actually quite a nice example; brighter multi-colored irid.)
59. **N CORN VASE WITH STALK BASE - LIME ICE GREEN (TOUGHER BASE COLOR - SORTA SILVERY)**
60. **N DAISY AND DRAPE TURNED IN FTD. VASE - ICE BLUE (EXTREMELY RARE ITEM IN THIS COLOR - LIGHTLY IRIDIZED WITH SILVER HIGHLIGHTS - BUT SUPER RARE)**
- 60A **10 1/4" TALL N DIAMOND POINT SWUNG VASE - POWDER BLUE OPAL. (EXTREMELY RARE TINT FOR THIS ITEM; VERY ATTRACTIVE; NOT OFTEN SOLD)**
61. **10 1/2" TALL N 4 PILLAR SWUNG VASE - ICE GREEN OPAL. (EXTREMELY RARE BASE COLOR FOR THIS ITEM; I'VE ONLY EVER SEEN A FEW)**
62. 10 1/2" Tall N Thin Rib Swung Vase - White (scarce; nice frosty finish)
- 62A 13" Tall N Thin Rib Mid-size Swung Vase - Pur. (scarce with nice bright satiny finish)
63. **N DOUBLE LOOP CHALICE (OR OPEN SUGAR) - AQUA OPAL. (VERY SCARCE AND PERFECT; NICE COLOR; OPAL. ON EDGE)**
127. 7" Fenton Peacock and Dahlia 6 Ruffled Bowl - Aqua / Mari. (very scarce base color; nice)
128. 7" Fenton Leaf Chain 6 Ruffled Bowl - Mari. / Vaseline (scarce; nice base color - tough)
129. 3" Tall Fenton Waterlily and Cattail Large Ruffled Toothpick Holder - Mari. (scarce shape)
130. **6" FENTON UTAH LIQUOR CO. / GARDEN MUMS DOUBLE HANDGRIP PLATE - AMY. (VERY RARE AND DESIRABLE; EXCELLENT EXAMPLE)**
131. 6" Fenton Pine Cone Plate with Plain Exterior - Blue (scarce; nice gold highlights)
- RARE AND EXTREMELY DESIRABLE; SUPER COLOR AND IRID.; SATINY)
156. **9 3/4" M'BURG PEACOCK IND. FLARED MASTER BERRY BOWL - GREEN (VERY RARE AND VERY DESIRABLE; SUPER RADIUM; NO BEE, NO BEADING)**
157. **(6) 5 1/4 - 5 1/2" M'BURG PEACOCK IND. FLARED BERRY BOWLS - GREEN (ALL RADIUM AND ALL DESIRABLE; SELLING CHOICE)**
158. **7 1/4" M'BURG PEACOCK AT THE URN "SHOT-GUN" BOWL WITH 3 IN 1 EDGE - GREEN (RADIUM AND DESIRABLE; GREAT ITEM)**

64. N Blossomtime Stemmed 6 Ruffled Compote - Pur. (scarce pattern; average satiny finish)
65. **N ROSE SHOW FLAT PLATE - GREEN (VERY RARE AND DESIRABLE; NICE COLOR AND IRID.)**
- 65A **N ROSE SHOW FLAT PLATE - ICE GREEN (VERY RARE AND EXTREMELY DESIRABLE; HAS GREAT MULTI-COLORED IRID. - A REAL BEAUTY!)**
- 66 **N WISHBONE SINGLE HULL FLEUR-DE-FEUILLE - GREEN**
159. (4) 5 1/2" M'burg Peacock at the Urn Ind. Berry Bowls - Mari. (satiny; no bee, no beading; selling choice)
160. **8" M'BURG PEACOCK UNFINISHED DEEP ROUND MASTER BERRY BOWL - MARI. (RADIUM AND VERY RARE; NO BEE, NO BEADING; DEEP ROUND UNFINISHED SHAPE)**
161. 10 1/2" M'BURG SEAWEED FLARED BOWL WITH 3 IN 1 EDGE - MARI. (VERY SCARCE SATINY ITEM)
162. M'BURG WHIRLING LEAVES TRI-CORNERED CRIMPED EDGE BOWL - MARI. (RADIUM AND RARE; NICE COLOR AND IRID.)
163. 8 1/2" M'burg Holly Sprig Variant Bowl with 3 in 1 Edge - Mari. (radium and very desirable; nice)
164. M'BURG FEATHER AND HEART 7 PC. WATER SET - MARI. (VERY SCARCE SET; COMPLETE AND PERFECT)
165. M'BURG STRAWBERRY WREATH "PUNCH BOWL" SHAPED COMPOTE WITH THE BLANK LEAF - MARI. (EXTREMELY RARE ITEM - RADIUM; A COLLECTOR'S DELIGHT)
166. M'burg Diamond 7 pc. Water Set - Mari. (very scarce satiny set - well matched)
167. 10 1/4" M'burg Rosiland Large 6 Ruffled Bowl - Amy. (very scarce; nice satiny finish)
168. 9 3/4" M'BURG FLEUR DE LEI ICE CREAM SHAPED BOWL - AMY. (RADIUM, ATTRACTIVE - HAS BLUE, GOLD AND REDS)
169. 10 1/2" M'burg Hanging Cherries Ice Cream Shaped Bowl - Amy. (satiny with nice goldish highlights)
170. M'BURG HANGING CHERRIES HANDLED MILK PITCHER - AMY. (VERY RARE AND DESIRABLE; GREAT FINISH; SMALL PEELING ON BASE)
171. M'BURG LEAF AND LITTLE FLOWERS FLAT FLARED COMPOTE - GREEN (RADIUM AND VERY DESIRABLE - SUPER)
172. 6" M'burg Cosmos Ice Cream Shaped Bowl - Green (radium and nice)
173. **M'BURG DIAMOND TUMBLER - AMBER (REALLY NICE ITEM IN A RARE COLOR WITH NICE DARK RADIUM FINISH)**
174. Cambridge Inverted Feather Stemmed 6 Ruffled Compote - Mari. (satiny finish)
175. **CAMBRIDGE INVERTED STRAWBERRY SPITTOON - GREEN (RARE AND VERY DESIRABLE; PERFECT WITH GREAT COLOR)**
176. **CAMBRIDGE COLOGNE BOTTLE AND STOPPER - GREEN (OUTSTANDING EXAMPLE - GREAT COLOR AND IRID.)**
177. Cambridge Inverted Feather Handled Covered Cracker Jar - Green (very scarce item; nice color and irid.)
178. **CAMBRIDGE DOUBLE STAR 7 PC. WATER SET - GREEN (VERY RARE; PERFECT WITH NICE IRID.)**
179. **CAMBRIDGE INVERTED STRAWBERRY LARGE FLARED OPEN COMPOTE - AMY. (RARE AND DESIRABLE; NICE COLOR AND IRID.)**
180. 5 1/4" JENKINS (OR U.S. GLASS) FIELD THISTLE ICE CREAM SHAPED SAUCE WITH STRETCH EFFECT - CELESTE BLUE (VERY RARE AND VERY DESIRABLE; GREAT COLOR AND IRID.)
181. **U.S. GLASS PALM BEACH ROSE BOWL - MARI. / GOLD PAINT (RARE AND VERY DESIRABLE; NICE SATINY FINISH)**
182. U.S. Glass Cosmos and Cane Tumbler - Honey Amber (scarce; nice color and irid.)
183. Westmoreland Corinth Jack in the Pulpit Vase - Lt. Mari. / Milk Glass (scarce; enameled "Sylvan Beach")
184. Westmoreland Corinth Jack in the Pulpit Vase - Teal (scarce; sorta nice color)
185. **9 1/2" EUROPEAN FOUR FLOWER VARIANT FLAT PLATE - OLIVE GREEN / SLAG (VERY RARE AND UNUSUAL - A VERY WEIRD ITEM)**
86. **N G & C VARIANT STIPPLED PLATE WITH RIBBED EXTERIOR AND OLD ROSE DISTILLERY ADVERTISING - GREEN (RARE AND DESIRABLE; GREAT IRID. - NICE!)**
87. 10 1/4" N G & C Large Ice Cream Bowl with Basketweave Exterior - Mari. (very scarce; nice irid. and color)
88. N G & C Large Dresser Tray - Dk. Mari. (nice color and irid.)
89. N G & C Banded Stippled Pin Tray - Mari. (very scarce item in this variation; nice)
- 185A **WESTMORELAND FRUIT SALAD 8 PC. PUNCH SET - P. OPAL. (EXTREMELY RARE; NICE COLOR WITH HEAVY OPAL.; HAS CHIPS ON COLLAR AND TOP OF BASE)**
186. 8 1/4" Westmoreland Scales Ice Cream Shaped Bowl - Lt. Mari. / Milk Glass (average color)
187. Westmoreland Leaf Swirl Stemmed 6 Ruffled Compote - Amy.
188. 5 3/4" Westmoreland Hobstar and Fruit 6 Ruffled Sauce - P. Opal. (very scarce little item; nice color and opal.)
189. Dugan Miniature Basketweave Handled Flower Basket - Mari.
190. **DUGAN QUILL BULBOUS HANDLED WATER PITCHER - MARI. (VERY RARE AND DESIRABLE; NICE IRID.)**
191. **DUGAN QUILL TUMBLER - DK. MARI. (A BEAUTY! DARK IRID. - REALLY NICE)**
192. Dugan Big Basketweave Handled Flower Basket - Mari. (nice color)
193. Dugan Handled Beaded Basket - Mari. (nice color)
194. Dugan Constellation Stemmed 6 Ruffled Compote - Dk. Mari. (radium finish and very scarce color)
195. **DUGAN RIBBED OPTIC LARGE 8 RUFFLED BRIDE'S BASKET WITH TIGHT CRIMPED EDGE IN SILVER PLATE FRAME - P. OPAL. (VERY RARE AND EXTREMELY DESIRABLE; SUPER OPAL. AND SHAPE - VERY NICE)**
196. Dugan Honeycomb Rose Bowl - P. Opal. (very scarce; nice opal. and irid.)
197. Dugan Ski Star Domed Handgrip Plate - Dk. P. Opal. (a beautiful example; dark color and nice opal.)
198. Dugan Single Flower Exterior Crimped Edge Handgrip Plate - P. Opal. (nice opal.)
199. **8 3/4" DUGAN FANCIFUL FLAT PLATE - P. OPAL. (RARE AND DESIRABLE; AS NICE AS THERE IS!)**
200. **10 1/2" DUGAN PERSIAN GARDEN LARGE ICE CREAM SHAPED BOWL - P. OPAL. (RARE AND VERY DESIRABLE SHAPE; NICE)**
201. 10" Dugan Garden Path Variant Large 6 Ruffled Bowl with Soda Gold Exterior - P. Opal. (very scarce and attractive; nice opal.)
202. (6) 6" Dugan Garden Path Variant 6 Ruffled Ind. Berry Bowls - P. Opal. (very scarce items; selling so much each - choice)
- 202A Dugan Wishbone and Spades Odd 8 Ruffled Bowl - P. Opal. (scarce; nice irid.; has an odd shape)
203. 6 - 6 1/2" Dugan Petal and Fan Ruffled 2 Sided Banana Dish in Metal Bride's Basket Frame - P. Opal. (an unusual item that's quite attractive)
204. 6" Dugan Persian Garden Flat Plate - Mari. (pretty nice example)
205. **DUGAN PERSIAN GARDEN 7 PC. LARGE ICE CREAM SET WITH 6 INDIVIDUAL BOWLS - WHITE (A RARE SET; FROSTY WITH GREAT IRID.)**
- 205A **DUGAN MANY FRUITS 7 PC. RUFFLED PUNCH SET - WHITE (EXTREMELY RARE SET; OUTSTANDING COLOR AND IRID.; ONE CUP AS IS)**
206. 10 1/4" Tall Dugan Lined Lattice Swung Vase - White (scarce; nice irid.)
- 206A **DUGAN QUESTION MARK STEMMED FLAT PLATE WITH GEORGIA PEACH / PUZZLE EXTERIOR - WHITE (SCARCE AND VERY DESIRABLE; GREAT COLOR AND IRID.)**
207. Dugan Constellation Stemmed 6 Ruffled Compote - White (scarce; great irid. and frosty finish)
208. **5" DUGAN BIG BASKETWEAVE SQUATTY FLARED UNSWUNG VASE - WHITE (RARE AND DESIRABLE; GREAT COLOR AND IRID.)**
209. Dugan Mary Ann 2 Handled Vase - Dk. Mari. (nice color and detail)

210. **10 1/2" DUGAN PETAL AND FAN LARGE 6 RUFFLED BOWL WITH JEWELLED HEART EXTERIOR - PUR. (ABSOLUTELY BEAUTIFUL EXAMPLE - BRIGHT MULTI-COLORED IRID.)**
211. 8 1/2" Dugan Flowers and Frames Domed Ruffled Bowl - Pur. (scarce; average goldish irid.)
212. 8" Dugan Fanciful Ice Cream Shaped Bowl - Amy. (an attractive item; really nice irid.)
- 212A 8 1/2 - 9" Dugan Round Up Low Ruffled Plate - P. Opal. (scarce; opal. on edge; nice irid.)
213. Dugan Grape Delight 6 ftd. Ruffled Rose Bowl - Blue (nice color and irid.)
214. Dugan Circle Scroll Jack in the Pulpit Hat from Tumbler - Pur. (very scarce and desirable)
215. **DUGAN FORMAL JACK IN THE PULPIT VASE - PUR. (RARE, VERY DESIRABLE AND VERY ATTRACTIVE)**
216. **DUGAN FISHERMANS HANDLED MUG - LT. AMY. (VERY RARE AND VERY DESIRABLE; LIGHT BASE COLOR AND NICE)**
217. **DUGAN HERON HANDLED MUG - PUR. (RARE AND DESIRABLE; HAVEN'T SOLD ONE LATELY)**
218. 5" Dugan Petal and Fan Deep Round Ind. Berry Bowl with Jewelled Heart Exterior - Lt. Amy. (odd tint and an odd shape)
219. Dugan Wreath of Roses Rose Bowl - Amy. (scarce; silvery / gold irid.)
220. **8 3/4" DUGAN ROUND UP FLAT PLATE - BLUE (RARE AND DESIRABLE; A REALLY NICE EXAMPLE)**
221. 9" Dugan Windflower Flat Plate - Blue (very scarce with a satiny finish - odd filled in point)
222. Dugan Heavy Iris Tumbler - Pur. (super example)
223. Dugan Cherry Wreath Tumbler - Pur. (very scarce)
224. (3) Dugan Stork and Rushes Tumblers with Beaded Top - Blue (selling so much each for set)
225. **DUGAN JEWELLED HEART HANDLED WATER PITCHER - LT. MARI. (RARE ITEM; VERY LIGHT IN COLOR AND IRID.)**
226. Dugan Jewelled Heart Tumbler - Mari. (chipped on pattern)
227. Dugan Dahlia Tumbler - Dk. Mari. (very nice)
228. Dugan Harvest Flower Tumbler - Dk. Mari. (scarce; dark color)
229. Dugan Grape Delight 6 ftd. Ruffled Rose Bowl - Mari. (has a satiny finish)
230. **DUGAN HEAVY IRIS 7 PC. TANKARD WATER SET - MARI. (VERY SCARCE; DESIRABLE SET; TUMBLERS ARE SUPER)**
231. (3) Imperial Octagon Stemmed Wine Glasses - Mari. (selling so much each for set)
232. Imperial Heavy Grape Handled Nappy - Lt. Mari.
233. Imperial Daisy Handled Flower Basket - Dk. Mari. (nice dark color)
234. Imperial Grape Handled Flower Basket - Clambroth (super irid.)
- 234A **IMPERIAL HOBSTAR COVERED BUTTER DISH - PUR. (SUPER COLOR AND IRID.; EXTREMELY RARE ITEM)**
- 234B **IMPERIAL HOBSTAR CREAMER - PUR. (ANOTHER SUPER EXAMPLE - GOES WELL WITH ABOVE ITEM)**
235. **IMPERIAL OCTAGON SMALL SIZE WATER PITCHER - PUR. (OUTSTANDING EXAMPLE; SUPER COLOR AND IRID.)**
236. **IMPERIAL WINDMILL HANDLED MILK PITCHER - PUR. (VERY RARE AND DESIRABLE - SUPER!)**
- 236A **IMPERIAL FASHION TALL STEMMED ROUND COMPOTE - SMOKE (EXTREMELY RARE COLOR AND SHAPE FOR THIS ITEM; NICE IRID.)**
237. **IMPERIAL POINSETTIA HANDLED MILK PITCHER - SMOKE (SUPER COLOR AND IRID. - WOW!)**
238. Imperial Poinsettia Handled Milk Pitcher - Dk. Mari. (super color and irid.)
239. Imperial Star Medallion Handled Milk Pitcher - Dk. Mari. (nice color)
240. **IMPERIAL GRAPE HANDLED WATER PITCHER - PUR. (A BEAUTY - GREAT COLOR AND BRIGHT MULTI-COLORED IRID.)**
241. **IMPERIAL GRAPE 8 PC. PUNCH SET - PUR. (VERY RARE AND DESIRABLE; SUPER COLOR; HAS SMALL FLAKE ON TOP OF ONE POINT)**
242. Imperial Grape Stemmed Goblet - Pur. (scarce; nice irid.)
243. **IMPERIAL GRAPE WATER CARAFE - AMY. (VERY SCARCE; NICE COLOR AND GOLD HIGHLIGHTS)**
244. 6 1/2" Imperial Grape Flat Plate - Dk. Mari. (nice irid.)
245. **IMPERIAL GRAPE WINE DECANTER AND STOPPER - SMOKE (VERY RARE, VERY DESIRABLE - AND OLD! WHERE DO YA FIND 'EM?)**
246. Imperial Octagon Wine Decanter and Stopper - Mari. (nice color)
247. Imperial Star Medallion ftd. Celery Vase - Pastel Mari. (very scarce and has nice irid.)
248. Imperial Tiger Lily Tumbler - Green (nice color and irid.)
249. Imperial Soda Gold Tumbler - Pastel Mari. (super irid.; nice)
250. **IMPERIAL THUMBPRINT AND OVALS VASE - PUR. (OUTSTANDING EXAMPLE - SUPER COLOR AND IRID.)**
251. **8" TALL X 4 3/4" BASE IMPERIAL ZIPPER LOOP TABLE SIZE KEROSENE LAMP - DK. MARI. (ABSOLUTELY FANTASTIC EXAMPLE; REALLY DARK)**
252. **IMPERIAL DIAMOND LACE 7 PC. WATER SET - PUR. (SCARCE; TYPICAL SUPER COLOR AND IRID.)**
253. Imperial Tiger Lily 7 pc. Water Set - Dk. Mari. (great color and irid. - just beautiful)
254. Imperial Broken Arches 14 pc. Punch Set - Dk. Mari. (nice set; attractive)
255. Lot of 13 Tumblers to be sold separately, choice - most Mari.
256. Fenton Iris Buttermilk Goblet - Dk. Mari.
257. Fenton Sailboats and Peacock at the Urn Compotes - Mari. (selling choice)
258. Dugan Many Fruits Round Punch Base only - Dk. Mari. (tough part)
259. Imperial Broken Arches Punch Base only - Mari.
260. N G & C Stippled table Size Punch Base only - Mari.

FOR THE RESULTS OF THIS OR ANY  
BURNS AUCTION SERVICE AUCTION SEND A SASE AND  
\$2.00 (INCLUDE NAME OR DATE OF AUCTION) TO:

EMMA TILTON  
221 N. PLUM ST.  
GNADENHUTTEN, OH 44629

**CHECK OUT BURNS AUCTION  
SERVICE ON THE WEB!**

Visit our new Web site for information on upcoming auctions, complete auction listings and photos of auction highlights. You can e-mail your bids or requests for information.

<http://zeus.kspress.com/woodsland/burnsauction>  
email: brnzauctsv@aol.com

