

BURNS

AUCTION SERVICE

N.C.C.C. Convention Auction

Saturday, June 20, 1998

Preview: Friday evening;
Saturday - 8 am, Auction 9 am

at the

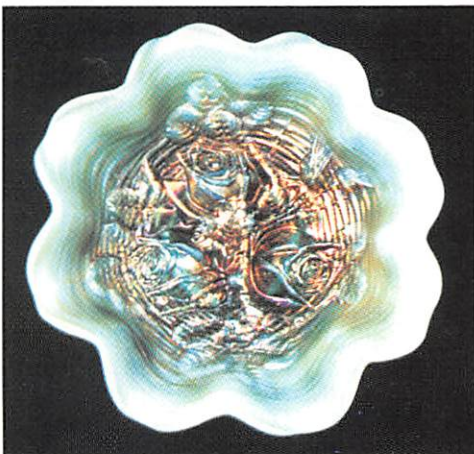
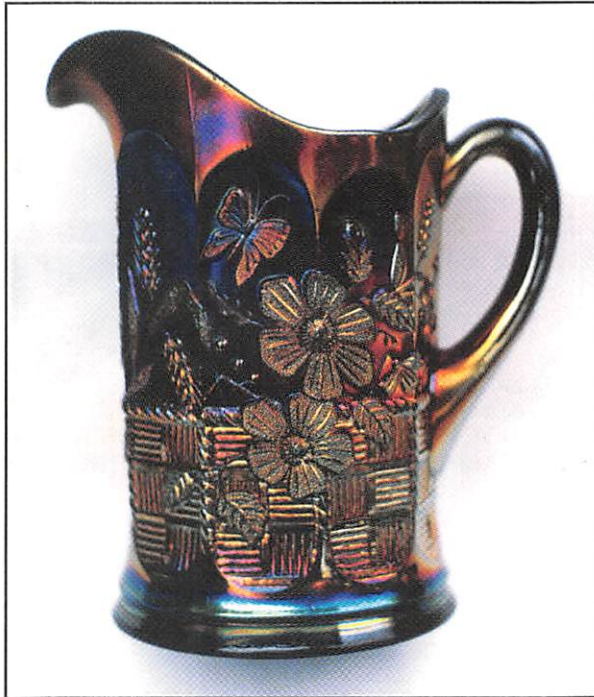
Holiday Inn - Modesto

1612 Sisk Rd.

Modesto, CA 95350

(209) 521-1612

(Just off Highway 99 at Briggsmore Exit)



This year it's our turn... California, here we come! Burns Auction Service is pleased to present this years N.C.C.C. Convention Auction. We'll be featuring a selection of glass from both Pennsylvania and Michigan - with a emphasis on items with plenty of iridescence. We know that west coast people really enjoy colorful items, so we're sure you'll enjoy what we brought ya...

The Holiday Inn in Modesto will host the event. It's located on the north side of town, just off the Briggsmore exit of Highway 99. You can make your reservations by calling the motel direct at (209) 521-1612 or if you have questions about the Convention activities call Doris Quick at (510) 525-8360.

Bids of all kinds (phone, mail, email) are due by Tuesday, June 16, 1998.

SPECIAL NOTE: Ole Bill will be home but Billy and Tom will be out west - make your calls accordingly.

Burns Auction Service

Tom Burns
109 E. Steuben St.
Bath, New York 14810
(607) 776-7942

Bill Richards
44 Water St., Poland, OH 44514
(330) 757-2001
FAX (330) 757-4917

Bill Richards, III
2253 Country Lane
Poland, OH 44514
(330) 755-2620

Maid Bids honored under the following conditions:

1. No deposit required. Bidders will take full responsibility to honor any and all bids we execute for them. Payment in full plus postage and handling required after notification and before we ship any item to them.
2. Items are bid on in perfect condition with average or above average iridescence OR as listed in the brochures. Bids will not be carried out when damage on an item has been found during the auction. **PEOPLE PRESENT AT AUCTION ARE RESPONSIBLE FOR FINDING ANY PINHEADS, WEAR, SPOTTINESS, MANUFACTURER'S DEFECTS OR ANY OTHER MINOR FLAWS, ETC.**
3. Successful bidders will be notified by collect call from the auctioneer (**so be sure to include phone number**).
4. Phone inquiries about the glass or any other questions are welcome.
5. If you have some other person at the auction bidding for you, they must pay for the item before taking it.
6. Any terms or conditions given the day of the auction will supersede any previously published information.
7. Mail, Email, FAX and Phone bids due by Tuesday, June 16, 1998.

- | | |
|---|---|
| <p>___ 1. Imperial Stretch Handled Cookie Tray with Etched Design - Smoke (scarce; small flake on edge)</p> <p>___ 2. Fenton Illusion Handled Bon Bon - Mari. (scarce pattern)</p> <p>___ 3. N Lattice and Poinsettia ftd. Ruffled Bowl - Clear Opal. (not Carnival; nice opal.)</p> <p>___ 4. Dugan Cherry Wreath Tumbler - Dk. Mari. (scarce; nice dark color)</p> <p>___ 5. DUGAN QUESTION MARK STEMMED HANDLED BON BON - LAVENDER (VERY SCARCE BASE COLOR FOR THIS ITEM; NICE)</p> <p>___ 6. Dugan Ski Star Domed Odd Crimped Banana Boat - P. Opal. (nice shape and opal.)</p> <p>___ 7. Unusual Heisey Covered Dresser Box with Etched Floral Decoration - Lt. Mari. (very different - lid is thin glass; signed Diamond - H)</p> <p>___ 8. N Acorn Burr Punch Base only - Green (damaged)</p> <p>___ 9. N G & C Punch Cup - Mari.</p> <p>___ 10. Imperial Flute and Cane Handled Creamer - Dk. Mari. (very scarce item in this pattern; nice color)</p> <p>___ 11. Fenton Two Flowers Spatula ftd. Rose Bowl - Mari. (very scarce; nice satiny finish)</p> <p>___ 12. Fenton Lattice and Grape Tumbler - Blue (has to be one of the best examples!)</p> <p>___ 13. 9 - 9 1/2" Fenton Feathered Serpent Large Low Ruffled Bowl - Dk. Mari. (super color and irid.; a very attractive item)</p> <p>___ 14. 8" Dugan Fanciful Ice Cream Shaped Bowl - Lt. P. Opal. (scarce; has opal. on edge; nice irid.)</p> <p>___ 15. 8 1/2" DUGAN FANCIFUL LOW BOWL / PLATE - AMY. (SCARCE; NICE SATINY IRID.)</p> <p>___ 16. 5" Dugan Ski Star 8 Ruffled Sauce - Amy. (scarce; has nice goldish highlights)</p> | <p>___ 17. 7" Dugan Flowers and Beads Exterior Plate - P. Opal. (scarce; nice mari. overlay)</p> <p>___ 18. DUGAN VENETIAN LINE HANDLED FLOWER BASKET - MARI. (1ST I'VE EVER SEEN; HOURGLASS SHAPED AND 2 SIDED)</p> <p>___ 19. Dugan Question Mark Stemmed Handled Bon Bon - Pur. (a real beauty - has nice multicolored irid.)</p> <p>___ 20. DUGAN VINEYARD BULBOUS HANDLED WATER PITCHER - PUR. (RARE; DESIRABLE; HAS NICE BRIGHT IRID.)</p> <p>___ 21. Dugan Vineyard Tumbler - Pur. (very scarce; perfect with great irid.)</p> <p>___ 22. DUGAN PUZZLE 2 HANDLED ROUND BON BON - PUR. (A SUPER, SUPER EXAMPLE; HAS BRIGHT RED AND BLUE IRID.)</p> <p>___ 23. 11 1/2" Tall Dugan Spiralx Swung Vase - Amy. (very desirable; has nice irid.)</p> <p>___ 24. 10 - 10 1/2" Tall Dugan Target Swung Vase - Pur. (nice color and irid.; very scarce color)</p> <p>___ 25. 5 1/2" TALL X 6 3/4" ACROSS DUGAN PULLED LOOP SQUATTY FLARED VASE - PUR. (VERY RARE AND DESIRABLE; REALLY NICE)</p> <p>___ 26. 7 - 7 1/2" Tall Dugan Target Squatty Flared Vase - Pur. (another very scarce item with nice color and irid.)</p> <p>___ 27. Dugan Grape Delight 6 ftd. Rose Bowl - Pur. (nice color and irid.)</p> <p>___ 28. 9" Dugan Lined Lattice Swung Vase - White (really nice color and irid. - attractive)</p> <p>___ 29. Dugan Border Plants Domed 10 Ruffled Bowl - P. Opal. (very scarce pattern; overlay is lighter)</p> <p>___ 30. DUGAN BORDER PLANTS DOMED 10 RUFFLED BOWL - PUR. (RARE AND VERY DESIRABLE; ABSOLUTELY SUPER COLOR AND IRID.)</p> |
|---|---|

- ___30A Dugan Paneled Cherries ftd. 10 Ruffled Bowl - Amy. (scarce and very desirable; bright multi-colored irid.; may have tiny flake or 2 on feet)
- ___31. Dugan Single Flower Exterior Ruffled Bowl with Enamelled Decoration - P. Opal. (really nice decoration and opal.)
- ___32. 6 1/2 - 7" Dugan Persian Garden Flared Plate - Mari. (has an odd streaking to the mari.)
- ___33. N Memphis Handled Punch Cup - Mari.
- ___34. N Grape Arbor Tumbler - Ice Blue (super color and irid.; may have slight roughness)
- ___35. **N PEACOCKS PLATE WITH RIBBED EXTERIOR - LT. AMY OR LAVENDER (RARE; VERY DESIRABLE; NICE LIGHT BASE COLOR)**
- ___36. (3) N Peacock at the Fountain Tumblers - Dk. Mari. (super color and irid.; selling choice)
- ___37. N Peacock at the Fountain Handled Punch Cup - Pur. (nice color and irid.)
- ___38. **10 1/2 - 11" N DIAMOND POINT SWUNG VASE - ELEC. BLUE (EXCELLENT EXAMPLE; REALLY NICE MULTI-COLORED IRID.)**
- ___39. 11" N Diamond Point Swung Vase - Green (super, super color and irid.; a different mold than #38)
- ___40. **N ROSE SHOW RUFFLED BOWL - AQUA OPAL. (RARE, VERY DESIRABLE; SUPER OPAL. AND IRID. - NICE)**
- ___41. **N HEARTS AND FLOWERS STEMMED RUFFLED COMPOTE - ICE BLUE (RARE AND DESIRABLE; NICE COLOR AND PRETTY NICE IRID.)**
- ___42. **N FRUITS AND FLOWERS STEMMED HANDLED BON BON - ICE BLUE (RARE AND DESIRABLE; NICE DARKER BASE COLOR WITH GREAT IRID.)**
- ___43. **N FRUITS AND FLOWERS STEMMED HANDLED BON BON - WHITE (VERY SCARCE; EXCELLENT EXAMPLE; HAS A MANUF. SEAM IN HANDLE - NO HARM)**
- ___44. N Fruits and Flowers Stemmed Handled Bon Bon - Blue / Elec. Blue (very attractive item; has manuf. open bubble)
- ___45. **N G & C VARIANT STIPPLED PLATE WITH RIBBED EXTERIOR - GREEN (RARE AND VERY DESIRABLE; TOUGH ITEM TO FIND; GREAT COLOR AND HIGHLIGHTS)**
- ___46. **7 1/2" N G & C RUFFLED BOWL WITH BASKETWEAVE EXTERIOR - ICE BLUE (RARE AND VERY DESIRABLE; HAS AN ODD DARKER TINT THAN NORMAL; GREAT IRID.)**
- ___47. 8 3/4" N G & C Flared Plate with Plain Exterior - Pur. (nice color and irid.; has gold highlights on edge)
- ___48. **N G & C SHOT GLASS - PUR. (SCARCE; PERFECT WITH NICE SATINY FINISH)**
- ___49. N G & C with Thumbprint Master Berry Bowl - Dk. Mari. (super color and irid.; nice and dark)
- ___50. **N CORN VASE WITH STALK BASE - DK. PUR. OR BLACK AMY. (VERY SCARCE AND DESIRABLE; IRID. SORTA SILVERY / GOLD - HAS REALLY DARK BASE COLOR)**
- ___51. **N STRAWBERRY PLATE WITH BASKETWEAVE EXTERIOR - DK. MARI. (EXCELLENT EXAMPLE - DARK IN COLOR WITH RED HIGHLIGHTS; NICE!)**
- ___52. 9" Fenton Leaf Chain Plate with Berry Exterior - Lt. Mari. (light in color but still very scarce)
- ___53. 8 - 8 1/2" Fenton Holly Ice Cream Shaped Bowl - Pastel Mari. (sorta Clambroth; has super irid.)
- ___54. Fenton Bouquet 5 pc. Bulbous Water Set - Dk. Mari. (a very attractive pattern with great dark color)
- ___55. **FENTON MIKADO LARGE STEMMED ICE CREAM SHAPED COMPOTE - ELEC. BLUE (AN UNBELIEVABLE ITEM WITH FANTASTIC IRID. FOR A FENTON PIECE)**
- ___56. Fenton Orange Tree Orchard Tumbler - Blue (scarce; super color and irid. - nice)
- ___57. **FENTON STRAWBERRY SCROLL TUMBLER - BLUE (RARE AND DESIRABLE; ABOVE AVERAGE IRID.)**
- ___58. (2) Fenton Strawberry Scroll Tumblers - Blue (both damaged; selling choice)
- ___59. Fenton Ten Mums Tumbler - Blue (great color and irid. for this item)
- ___60. **FENTON PANTHER FTD. ROUND IND. BERRY BOWL - AMY. (RARE AND VERY DESIRABLE; VERY TOUGH BASE COLOR WITH NICE IRID.)**
- ___61. Fenton Blackberry Block Tumbler - Amy. (very scarce color for this item; nice irid.)
- ___62. **FENTON PEACOCK AT THE URN BOWL WITH 3 IN 1 EDGE - AMY. (VERY SCARCE; HAS MULTI-COLORED SATINY IRID.)**
- ___63. Fenton G & C Spatula ftd. Round Flared Bowl - White (rare color for this item; just average irid.)
- ___64. Fenton Stretch Melon Ribbed Domed Rose Bowl - Ice Green (very desirable shape and size; nice color)
- ___65. **FENTON HOLLY 8 RUFFLED BOWL - RED (RARE AND DESIRABLE; QUITE A NICE EXAMPLE)**
- ___66. **8 1/2 - 9" FENTON THREE ROW 8 RUFFLED BOWL - WHITE (VERY SCARCE; PERFECT WITH NICE FROSTY IRID.)**
- ___67. Fenton Two Row Ice Cream Shaped Hat - White (another very scarce item; nice and frosty)
- ___68. **FENTON STRETCH INTERIOR PANELED FLARED 6 RUFFLED VASE - TANGERINE SLAG (REALLY ODD TEXTURE FOR THIS ITEM; VERY RARE)**
- ___69. 9 1/2" Tall Fenton Fine Rib Swung Vase - Lt. Mari. / Vaseline (scarce base color; light overlay)
- ___70. **FENTON WREATH OF ROSES / VINTAGE INTERIOR 6 PC. PUNCH SET - DK. MARI. (SUPER, SUPER COLOR AND IRID.; INTERIOR HAS RED HIGHLIGHTS)**
- ___71. **FENTON PANELED DANDELION TANKARD WATER PITCHER - BLUE (RARE, DESIRABLE; MAY HAVE SMALL DING ON BOTTOM RIM)**
- ___72. 8 1/2 - 9" Fenton Lotus and Grape 8 Ruffled Bowl - Green (very scarce; an example anyone would like)
- ___73. Fenton Cherry Circles Handled Round Bon Bon - Dk. Mari. (nice dark color and irid.)
- ___74. N Peacock at the Urn Ind. Ice Cream Bowl - Amy. (scarce and really different - base glass has a slag / swirl effect)
- ___75. **N PEACOCK AT THE URN LARGE ICE CREAM BOWL - ELEC. BLUE (RARE AND A BEAUTY; BRIGHT BLUE IRID. AND PERFECT; REALLY NICE)**
- ___76. **N PEACOCK AT THE URN LARGE ICE CREAM BOWL - ICE BLUE (RARE AND DESIRABLE; NICE PINK HIGHLIGHTS)**
- ___77. (4) N Peacock at the Urn Ind. Ice Cream Bowls - Ice Blue (very scarce; all have silvery irid.; selling choice)
- ___78. **N PEACOCK AT THE URN LARGE ICE CREAM BOWL - PUR. (SCARCE AND VERY DESIRABLE; ONE OF THE BETTER EXAMPLES)**
- ___79. **N PEACOCK AT THE URN LARGE ICE CREAM BOWL - DK. MARI. (REALLY NICE DARK COLOR AND GREAT IRID.)**
- ___80. **N PEACOCK AT THE URN LARGE ICE CREAM BOWL - WHITE (VERY SCARCE AND HAS NICE IRID.; STAINS ON EDGE)**
- ___81. N Peacocks Plate with Ribbed Exterior - Pastel Mari. (a real beauty but has large flake on back)
- ___82. N Peacock at the Fountain Spooner - Lt. Amy. (very nice base color and irid.; scarce)
- ___83. N Round Bushel Basket - Pur. (scarce; nice color)
- ___84. Pair N Stretch 6 Paneled Candlesticks - Russet Green (scarce; nice color)
- ___85. **9" TALL N TREE TRUNK STANDARD SWUNG VASE - SAPPHIRE (VERY RARE BASE COLOR - VERY ATTRACTIVE)**
- ___85A **12 1/2 - 13" TALL N TREE TRUNK MID-SIZE SWUNG VASE - GREEN (VERY SCARCE AND DESIRABLE; HAS NICE SATINY FINISH ON A TOUGH BASE COLOR)**

86. **N TORNADO LARGE SIZE TRI-CORNERED VASE - GREEN (RARE AND DESIRABLE; NICE COLOR AND IRID.)**
87. N Fruit and Flowers Stemmed Handled Bon Bon - Blue / Elec. Blue (scarce; nice color and blue highlights)
88. **N STRAWBERRY BOWL WITH PIE CRUST EDGE AND PLAIN EXTERIOR - PASTEL MARI. (SUPER IRID. - VERY DESIRABLE)**
89. N Strawberry 8 Ruffled Bowl with Plain Exterior - Pur. (very nice example; nice irid.)
90. **N GOOD LUCK 8 RUFFLED BOWL WITH RIBBED EXTERIOR - AMY. (VERY SCARCE AND HAS NICE BRONZE IRID.)**
91. **N G & C FTD. HATPIN HOLDER - AMY. (VERY SCARCE; SUPER COLOR AND IRID.)**
92. N G & C ftd. Hatpin Holder - Pur. (scarce; has average / silvery irid.)
93. N G & C ftd. Ruffled Small Size Fruit Bowl - Pur. (scarce; nice color and irid.)
94. 6" N G & C Handgrip Plate with Basketweave Exterior - Pur. (scarce; nice irid.)
95. 8 1/2 - 9" Dugan Apple Blossom Twigs Bowl with 3 in 1 Edge - White (very scarce shape with nice irid. - tough!)
96. Dugan Double Stem Rose Domed Ruffled Bowl - White (scarce; nice irid.)
97. 7 1/2" Dugan Vining Twigs Low Ruffled Bowl / Plate - White (nice irid.)
98. Dugan Flowers and Frames Deep 10 Ruffled Bowl / Vase - P. Opal. (scarce shape; nice opal. and irid.)
99. Fenton Kittens 4 Sided Ruffled Bowl - Mari. / Clear (scarce)
100. **7 1/2" FENTON ACORN LOW RUFFLED BOWL - RED (VERY SCARCE AND DESIRABLE; SILVERY IRID.)**
101. Fenton 2 Row Open Edge 6 Ruffled Hat - Mari. / Vase-line (scarce and desirable base color)
102. Fenton 2 Row Open Edge 2 Sided Hat - Powder Blue / Mari. (scarce base color - nice overlay)
103. Fenton Lotus and Poinsettia ftd. Ruffled Sauce - Blue (nice color)
104. Fenton Persian Medallion Large Stemmed Ruffled Compote - Blue (one of the best examples I've seen)
105. 8 1/2 - 9" Fenton Peacock at the Urn 8 Ruffled Bowl - Blue (scarce and always desirable; nice)
106. 9 1/2" Fenton Cherry Chain Large 8 Ruffled Bowl - Blue (scarce with nice color and detail)
107. (3) Imperial Stretch Wide Panel Stemmed Sherbets - Red (super color; selling choice)
108. 4" Tall x 2" Base Imperial Miniature Morning Glory Squatty Flared Vase - Dk. Mari. (a real cutie; nice color and shape)
- 108A **11 - 11 1/2" TALL IMPERIAL PARLOR PANELS STANDARD SWUNG VASE - AMY. (RARE AND VERY DESIRABLE; HAS SUPER BRIGHT IRID.; JUST BEAUTIFUL)**
109. **IMPERIAL LUSTRE ROSE LARGE ROUND FTD. FRUIT BOWL - LIME GREEN / MARI. (VERY RARE AND ODD BASE COLOR FOR THIS ITEM)**
110. **7" TALL X 3 7/8" BASE IMPERIAL ZIPPER LOOP SMALL TABLE SIZE LAMP - MARI. / CLEAR (RARE AND VERY DESIRABLE SIZE; TOUGH)**
111. **IMPERIAL DIAMOND LACE 7 PC. WATER SET - PUR. (SUPER SET WITH GREAT COLOR AND IRID. - NICE!)**
112. Imperial Diamond Lace Tumbler - Amy. (scarce; nice color and irid.)
113. Imperial Embossed Scroll Stemmed Ruffled Compote - Pur. (super color and irid.; really nice)
- 113A Imperial Embossed Scroll Large Ruffled Compote with Curved Star Exterior - Pur. (very scarce and desirable; nice, bright multi-colored irid.)
114. Canada Dry Soda Pop Bottle with Labels - Mari. (a neat novelty! complete with labels)
115. **M'BURG SWIRL HOBNAIL ROSE BOWL - DK. MARI. (VERY SCARCE AND DESIRABLE; SATINY IRID.)**
116. 6" M'burg Blackberry Wreath 6 Ruffled Sauce - Dk. Mari. (radium and very desirable)
117. **5 3/4" WESTMORELAND HOBSTAR AND FRUIT 6 RUFFLED SAUCE - BLUE OPAL. (VERY DESIRABLE; GREAT COLOR AND OPAL.)**
118. 1982 ACGA (Dayton, OH) Seacoast Spittoon - P. Opal. (nice; desirable)
119. 1982 ICGA (Elkhart, IN) Frolicking Bears Spittoon - Red (nice; desirable)
120. **N POPPY SHOW PLATE - BLUE / ELEC. BLUE (RARE AND ALWAYS DESIRABLE; THIS ONE HAS RED AND BLUE HIGHLIGHTS WITH GOLD / SILVERY FINISH)**
- 120A **N ROSE SHOW PLATE - ELEC. BLUE (ABSOLUTELY FANTASTIC EXAMPLE WITH BRIGHT BLUE IRID.; MAY HAVE MICRO-PINHEAD OR 2 ON EDGE, BUT WHO CARES? A GREAT EXAMPLE)**
121. N Poppy Ruffled Relish Tray - Elec. Blue (very desirable; has bright blue irid.)
122. N Peacock at the Fountain Water Pitcher - Elec. Blue (very nice example but cracked at base)
123. **N PEACOCK AT THE FOUNTAIN 4 PC. TABLE SET - DK. MARI. (VERY SCARCE SET; PERFECT WITH NICE IRID.)**
124. N Drapery Tri-Cornered Candy Dish - Dk. Mari. (scarce color; nice)
125. **N SPRINGTIME 6 PC. WATER SET - PUR. (RARE AND VERY DESIRABLE; NICE; ABOUT AS TOUGH A SET TO FIND AS THERE IS)**
126. N Embroidered Mums Ruffled Bowl with Ribbed Exterior - Pur. (scarce; has nice average irid.)
127. N Wishbone ftd. Ruffled Bowl with Ruffles and Rings Exterior - Amy. (nice color)
128. N Sunflower ftd. Ruffled Bowl with Meander Exterior - Amy. (nice color)
129. N Butterfly 2 Handled Bon Bon with Plain Exterior - Amy. (nice irid.)
130. **N DAVIDSONS SOCIETY CHOCOLATES DOUBLE HANDGRIP PLATE WITH BASKETWEAVE EXTERIOR - AMY. (RARE AND VERY DESIRABLE; EXCELLENT EXAMPLE)**
131. **N PEACOCKS PLATE WITH RIBBED EXTERIOR - PUR. (VERY SCARCE AND DESIRABLE - REALLY DIFFERENT IRID.)**
132. **N PEACOCKS RUFFLED BOWL WITH RIBBED EXTERIOR - DK. MARI. (NICE COLOR AND IRID.; VERY SCARCE)**
133. **N G & C SMALL PIN TRAY - PUR. (NICE IRID.; VERY SCARCE)**
134. N G & C Covered Butter Dish - Pur. (nice irid. - scarce)
135. **N G & C COVERED COMPOTE - PUR. (VERY SCARCE; ALWAYS DESIRABLE; NICE COLOR)**
136. N G & C 7 pc. Water Set - Pur. (scarce set; nice color and irid.)
137. N G & C Bowl with Pie Crust Edge and Basketweave Exterior - Pur. (nice color and irid.)
138. **N G & C VARIANT BOWL WITH PIE CRUST EDGE AND PLAIN EXTERIOR - GREEN (ABSOLUTELY FANTASTIC IRID.; A WONDERFUL ITEM)**
139. N G & C Stippled Handled Bon Bon - Blue (very scarce; nice color and irid.)
140. **N GOOD LUCK 8 RUFFLED BOWL WITH RIBBED EXTERIOR - ELEC. BLUE (SUPER COLOR AND IRID.; VERY DESIRABLE)**
141. N Good Luck 8 Ruffled Bowl with Ribbed Exterior - Blue (scarce; nice color and irid.)
142. N Good Luck 8 Ruffled Bowl with Basketweave Exterior - Pur. (scarce; nice color and irid.)
143. N Good Luck 8 Ruffled Bowl with Ribbed Exterior - Mari. (nice color and irid.; getting scarce)
144. N Greek Key 8 Ruffled Bowl with Ribbed Exterior - Pastel Mari. (light in color; really nice irid.)

- ___ 145. N FINE CUT AND ROSES FTD. RUFFLED CANDY DISH WITH FANCY INTERIOR - AQUA OPAL. (RARE AND DESIRABLE; FEET ARE PRETTY GOOD)
- ___ 146. N THREE FRUITS STIPPLED PLATE WITH RIBBED EXTERIOR - AMY. (SCARCE ITEM WITH NICE COLOR AND IRID.)
- ___ 146A N STIPPLED THREE FRUITS PLATE WITH RIBBED EXTERIOR - ELEC. BLUE (PERFECT WITH A MIRROR - LIKE IRID. OF BRIGHT BLUE; DOES HAVE A 3 - 4" BAND OF RED / GOLF IRID. ON OUTSIDE EDGE; A BEAUTY)
- ___ 147. N THREE FRUITS PLATE WITH PLAIN EXTERIOR - PUR. (SUPER EXAMPLE - BRIGHT IRID.; NICE)
- ___ 147A N THREE FRUITS 8 RUFFLED BOWL WITH PLAIN EXTERIOR - PUR. (AN OUTSTANDING EXAMPLE WITH BLUE, GREEN AND GOLD HIGHLIGHTS - A REAL BEAUTY)
- ___ 148. N Three Fruits Ruffled Bowl with Basketweave Exterior - Green (nice color and irid.)
- ___ 149. N Three Fruits Ruffled Bowl with Basketweave Exterior - Pur. (another nice example)
- ___ 150. FENTON HOLLY STEMMED RUFFLED COMPOTE - RED (RARE AND VERY DESIRABLE; SUPER COLOR)
- ___ 151. FENTON HOLLY 2 SIDED HAT SHAPE - RED / AMBERINA (SCARCE ITEM; AVERAGE COLOR AND IRID.)
- ___ 152. 8 1/2" Fenton Captive Rose 6 Ruffled Bowl - Blue (nice color and irid.)
- ___ 153. Fenton G & C Spatula ftd. Ruffled Bowl - Mari. (super irid.)
- ___ 154. 6" Fenton Sailboats Deep Round Sauce - Amber (very scarce base color - great detail)
- ___ 155. 7" FENTON ELKS BPOE 1911 ATLANTIC CITY ICE CREAM SHAPED BOWL - BLUE (VERY RARE AND DESIRABLE; NICE COLOR AND DETAIL)
- ___ 156. 7 1/2" Fenton Horsehead Medallion Plate - Mari. (very scarce; nice color, irid. & detail)
- ___ 157. FENTON THISTLE FTD. BANANA BOAT - GREEN (VERY SCARCE AND DESIRABLE; NICE)
- ___ 158. 8 3/4" FENTON ORANGE TREE 8 RUFFLED BOWL - GREEN (RARE BASE COLOR; NICE COLOR AND IRID.)
- ___ 159. FENTON ORANGE TREE LARGE FTD. RUFFLED FRUIT BOWL - BLUE (A REAL NICE ITEM - BRIGHT HIGHLIGHTS)
- ___ 160. 18" TALL FENTON RUSTIC SWUNG FUNERAL VASE - DK. MARI. (NICE DARK COLOR - REALLY DESIRABLE)
- ___ 161. FENTON G & C FTD. FRUIT BOWL WITH PERSIAN MEDALLION INTERIOR - AMY. (VERY SCARCE BASE COLOR; NICE)
- ___ 162. 9 1/2" FENTON LOTUS AND POINSETTIA FTD. RUFFLED BOWL - AQUA / GREEN (ODD BASE COLOR; NICE IRID.)
- ___ 163. 8 3/4" Fenton Lotus and Poinsettia ftd. Ruffled Bowl - Dk. Mari. (super color and detail)
- ___ 164. 9 1/2 - 10" Fenton Little Fishes Large 8 Ruffled Bowl - Dk. Mari. (really nice example)
- ___ 165. 10 1/4" FENTON STAG AND HOLLY LARGE BALL FTD. ICE CREAM SHAPED BOWL - ELEC. BLUE (A BEAUTY! HAS RED AND BLUE HIGHLIGHTS - VERY ATTRACTIVE)
- ___ 166. Fenton Kittens Cup only - Dk. Mari. (great detail; nice dark color)
- ___ 167. Fenton Kittens 6 Ruffled Bowl - Mari. (very scarce shape; nice color and irid.)
- ___ 168. Fenton Kittens 4 Sided Bowl - Mari. (very scarce; nice color)
- ___ 169. Fenton Stretch Double Dolphin 1/2 lb. Covered Candy Dish - Velva Rose (scarce; perfect with nice color and irid.)
- ___ 170. 9" FENTON PEACOCK AT THE URN PLATE - BLUE (SUPER EXAMPLE; NICE MULTI-COLORED IRID.)
- ___ 171. 9" FENTON PEACOCK AT THE URN 6 RUFFLED BOWL - WHITE (VERY SCARCE; REALLY NICE IRID.)
- ___ 172. 7 3/4" Fenton Dragon and Lotus Spatula ftd. Ice Cream Shaped Bowl - P. Opal. (very scarce item in this color; nick on knob)
- ___ 173. 8 3/4" Fenton Dragon and Lotus 8 Ruffled Bowl - Blue (nice color and irid.)
- ___ 174. 9" Fenton Dragon and Lotus Low Bowl with 3 in 1 Edge - Dark Green (odd shape in a very scarce color)
- ___ 175. FENTON ROSE SPRAY STEMMED JACK IN THE PULPIT COMPOTE - WHITE (VERY SCARCE; PRETTY NICE DETAIL)
- ___ 176. Fenton Persian Medallion Rose Bowl - White (very scarce; nice color and irid.)
- ___ 177. 8 3/4" Fenton Captive Rose 6 Ruffled Bowl - Green (nice color and irid.)
- ___ 178. 9" Fenton Holly Bowl with 3 in 1 Edge - Blue (nice color and detail)
- ___ 179. Fenton Holly 6 Ruffled Hat Shape - Powder Blue / Mari. (odd base glass color)
- ___ 180. 12" FENTON STAG AND HOLLY BALL FTD. CHOP PLATE - DK. MARI. (EXTREMELY RARE AND VERY DESIRABLE; SUPER DETAIL AND IRID. - NICE)
- ___ 181. 9 1/4" FENTON STAG AND HOLLY SPATULA FTD. PLATE - MARI. (ANOTHER RARE AND VERY DESIRABLE ITEM; STRONG SATINY FINISH)
- ___ 182. 9" FENTON SPECTOR'S DEPT. STORE / HEART AND VINE PLATE - MARI. (SCARCE AND DESIRABLE; HAS A LOT OF SPRAY STAIN IN CENTER)
- ___ 183. Fenton Leaf Tiers ftd. Round Master Berry Bowl - Dk. Mari. (very rare - quite unusual)
- ___ 184. 10" Imperial Grape Large Flared Master Berry Bowl - Smoke (scarce; super irid.)
- ___ 185. PAIR IMPERIAL FASHION BREAKFAST SUGAR AND CREAMER - SMOKE (RARE PAIR; NICE IRID.; SELLING AS A SET)
- ___ 186. Pair Imperial Fashion Breakfast Sugar and Creamer - Dk. Mari. (very scarce; also selling as a pair)
- ___ 187. 8" Imperial Heavy Grape Flat Plate - Pur. (super color and irid.; nice)
- ___ 188. 11 1/4" Imperial Grape Large 8 Ruffled Bowl - Pur. (super multi-colored irid.; really nice)
- ___ 189. IMPERIAL GRAPE PUNCH TOP ONLY - PUR. (VERY DESIRABLE; SMALL CHIP ON ONE POINT)
- ___ 190. IMPERIAL CHATELINE TUMBLER - PUR. (RARE AND VERY DESIRABLE; SUPER IRID.)
- ___ 191. 8 1/2" Imperial Windmill 8 Ruffled Bowl - Pur. (scarce; nice color and irid.)
- ___ 192. 8 - 8 1/2" Imperial Acanthus Deep Round Bowl - Pur. (super color and irid.; nice)
- ___ 193. 8 - 8 1/2" Imperial Embossed Scroll 8 Ruffled Bowl - Emerald Green (quite an attractive item; nice)
- ___ 194. 6" Imperial Embossed Scroll 6 Ruffled Bowl with File Exterior - Pur. (super color and irid.; nice)
- ___ 195. IMPERIAL HOBSTAR FLOWER STEMMED RUFFLED COMPOTE - SMOKEY VIOLET (VERY SCARCE AND ODD BASE COLOR; VERY UNUSUAL)
- ___ 196. 5" Tall x 4 1/4" Top x 2 1/2" Base Imperial Stretch Flared Vase - Red (a cutie; nice bright base color)
- ___ 197. 8 1/4" Imperial Stretch Wide Panel Flat Plate - Red (super color and irid. - a nice item)
- ___ 198. 6 1/2 - 6 3/4" Imperial Stretch Wide Panel Deep Round Bowl - Red (another item with great color and irid.)
- ___ 199. M'burg Primrose Bowl with Ruffled 3 in 1 Edge - Green (a real radium beauty; very scarce shape)
- ___ 200. 8 3/4" M'BURG TROUT AND FLY 6 RUFFLED BOWL - GREEN (VERY DESIRABLE; NICE COLOR AND IRID.)
- ___ 200A 5 1.2 - 6" M'BURG HANGING CHERRIES SAUCE WITH 3 IN 1 EDGE - BLUE (ABSOLUTELY BEAUTIFUL EXAMPLE WITH A BRIGHT MULTI-COLORED IRID.; VERY, VERY TOUGH ITEM TO FIND)

201. 8 3/4" M'burg Blackberry Wreath Bowl with 3 in 1 Edge - Amy. (scarce; nice color and irid.)
202. 9" M'burg Rays and Ribbons Deep Flared Bowl - Amy. (satiny - scarce shape)
203. 9 1/2" M'burg Holly Whirl 6 Ruffled Bowl - Amy. (nice item)
204. 9 1/2" M'burg Nesting Swan 6 Ruffled Bowl - Mari. (satiny; scarce)
205. **CAMBRIDGE INVERTED STRAWBERRY 5 PC. BERRY SET - DK. MARI. (SCARCE SET; THIS ITEM IS A TOUGHIE)**
206. Cambridge Inverted Feather Covered Cracker Jar - Green (desirable item; nice color and irid.)
207. 9 1/2 - 10" Australian Nesting Swan 16 Ruffled Deep Flared Bowl - Mari. (rare pattern; really nice color and irid.)
208. 7 1/2" Fostoria Brocaided Acorns Flat Round Plate - Ice Blue (nice base color - attractive)
209. **5 1/2" X 5" DIAMETER ROBERT HANSEN SIGNED 3 FTD. EYEWINKER VASE - RED (EXTREMELY DESIRABLE ITEM WITH FANTASTIC COLOR)**
210. **DUGAN NAUTILUS NOVELTY OPEN SUGAR, SIGNED IN SCRIPT - P. OPAL. (RARE ITEM; A NICE EXAMPLE WITH A GOOD CLEAR SIGNATURE)**
211. Dugan Nautilus Novelty Creamer - Pur. (great color; scarce and very desirable)
212. Dugan Raindrops Domed Bowl with Keyhole Exterior - P. Opal. (nice color and great opal.; nice)
213. 10" Dugan Petal and Fan Large 8 Ruffled Bowl with Jewelled Heart Exterior - White (very impressive item; has small bruise on edge)
214. **DUGAN GRAPEVINE LATTICE JACK IN THE PULPIT HAT FROM TUMBLER - MARI. (VERY SCARCE SHAPE FOR THIS ITEM - NEAT!)**
215. **9" DUGAN APPLE BLOSSOM TWIGS RUFFLED 2 SIDED BANANA BOAT - PUR. (A REAL BEAUTY; GREAT COLOR AND RARE SHAPE)**
216. 9" Dugan Apple Blossom Twigs Low Ruffled Plate - Amy. (very scarce; nice satiny finish)
217. **9" DUGAN FANCIFUL LOW RUFFLED PLATE - PUR. (VERY SCARCE; NICE SATINY FINISH)**
218. Dugan Six Petals Tri-Cornered Bowl - Pur. (great color and irid.; a real beauty)
219. 10" Dugan Cherries / Jewelled Heart Exterior 8 Ruffled Bowl - Pur. (very scarce and desirable; odd light detail to pattern; nice irid.)
220. **N POPPY SHOW RUFFLED BOWL - PUR. (RARE AND DESIRABLE; NICE IRID.; GETTING TOUGH TO FIND; AN ATTRACTIVE ITEM)**
221. N G & C Cologne Bottle and Stopper - Lt. Green (very scarce; lighter base color; nice)
222. N G & C Small Pin Tray - Green (scarce and very desirable; has manuf. flaw on edge)
223. **N G & C TANKARD WATER PITCHER - MARI. (RARE AND DESIRABLE; NICE COLOR AND IRID.)**
224. N Wild Rose ftd. Nut Bowl with Rays Interior - Green (great color and irid.; scarce)
225. **9 3/4" N DIAMOND POINTS SWUNG VASE - RENNINGER BLUE (VERY RARE BASE COLOR AND TINT; TOUGH ITEM TO FIND)**
226. 6 1/2" N Thin Rib Squatty Flared Vase - Pur. (great shape and color; nice)
227. 10" N Leaf Columns Swung Vase - Dk. Mari. (super dark color and irid.; very nice)
228. **N DOUBLE LOOP BREAKFAST CREAMER - BLUE (VERY RARE AND DESIRABLE; NICE COLOR)**
229. **N FRUIT AND FLOWERS STEMMED HANDLED BON BON - AQUA OPAL. (RARE AND DESIRABLE; NICE OPAL. AND IRID.)**
230. **8 3/4" N PEACOCKS BOWL WITH PIE CRUST EDGE AND RIBBED EXTERIOR - PUR. (VERY SCARCE AND DESIRABLE SHAPE WITH NICE IRID.)**
231. **8 - 8 1/2" N HEARTS AND FLOWERS RUFFLED BOWL WITH RIBBED EXTERIOR - WHITE (VERY SCARCE AND DESIRABLE; REALLY NICE IRID.)**
232. N Concave Diamond Stretch Covered Water Pitcher - Celeste Blue (very scarce item; has manuf. check in handle)
233. 7 1/2" Fenton Stretch Wide Panel Pedestaled Doughnut Tray - Wisteria (odd shaped item in a rare color)
234. 11" Fenton Melon Rib Turned Out Centerpiece Bowl - Tangerine (very desirable color in Stretch; really nice)
235. **FENTON DOUBLE DOLPHIN FAN VASE WITH ENAMELED FLORAL WREATH DECOR. - ICE GREEN (VERY SCARCE; NICE COLOR AND STRETCH EFFECT)**
236. Fenton Butterfly and Berry ftd. Master Berry Bowl - Dk. Mari. (super color and irid. - very nice)
237. **9 - 9 1/4" FENTON HOLLY FLAT PLATE - BLUE (VERY SCARCE; HAS SUPER IRID.; MAY HAVE SMALL FLAKE UNDER BASE)**
238. 9 1/2" Imperial Jewels Deep Round Bowl - Pur. (nice large size; nice irid.)
239. Imperial Jewels Rose Bowl - Pur. (very scarce and desirable; small open bubble)
240. **7 1/2" TALL X 10" TOP FLARE U.S. GLASS STRETCH LARGE FLARED COMPOTE WITH SAW-TOOTH STEM - ICE GREEN (VERY RARE AND UNUSUAL; GREAT SIZE, COLOR AND IRID.)**
241. **10 1/2" DUGAN BLOSSOMS AND SPEARS LARGE RUFFLED BOWL - P. OPAL. (VERY RARE PATTERN; NOT MANY KNOWN IN ANY COLOR; NICE OPAL.)**
242. **7 1/2" DUGAN ARGONAUT SHELL NOVELTY SWUNG VASE - DK. MARI. (SUPER COLOR AND IRID.; VERY DESIRABLE)**
243. **DUGAN QUILL TUMBLER - MARI. (RARE PATTERN; NICE COLOR AND IRID.)**
244. Dugan Harvest Flower Tumbler - Mari. (scarce; nice color and irid.)
245. **12" FOSTORIA BROCAIDED ACORNS LARGE CORNUCOPIA FTD. CONSOLE BOWL WITH A PAIR OF 3 FTD. SQUATTY CANDLESTICKS - ICE BLUE (VERY RARE SET; LARGE BOWL IS A SUPER ITEM)**
246. **11 1/2" FOSTORIA BROCAIDED PALMS LARGE 3 FTD. CONSOLE BOWL - ICE GREEN (NICE LARGE ITEM; GREAT COLOR AND IRID.)**
247. N Raspberry Tumbler - Green (nice dark color; nice irid.)
248. **N ORIENTAL POPPY TUMBLER WITH RIBBED INTERIOR - ICE BLUE (RARE AND DESIRABLE; PRETTY NICE COLOR AND IRID.)**
249. **N SINGING BIRD IND. BERRY BOWL - BLUE (VERY RARE COLOR FOR THIS ITEM)**
- 249A N Singing Bird Master Berry Bowl - Pur. (very scarce and underpriced item; nice dark base color with multi-colored irid.)
250. **N SINGING BIRD HANDLED MUG - ELEC. BLUE (SUPER COLOR AND IRID. - ALWAYS DESIRABLE)**
251. N Singing Bird Handled Mug - Green (scarce color with nice irid.)
252. N Singing Bird Handled Mug - Dk. Pur. (really dark and has nice irid.)
253. N Singing Bird Handled Mug - Ice Blue (cracked but still a nice shelf piece)
254. N Singing Bird Stippled Mug - Dk. Mari. (scarce; usually with nice irid.)
255. **N CORN VASE WITH STALK BASE - ICE GREEN (VERY SCARCE AND DESIRABLE; PRETTY NICE COLOR AND IRID.)**
256. N Peacock at the Fountain Tumbler - Amy. (nice color and irid.)
257. 9" N Rose Show Plate - White (chip on rose but still a scarce item)

- _____258. 8" Tall N Drapery Variant Swung Vase - Mari. (very scarce; nice color and irid.)
- _____259. **N WIDE PANEL 5 PC. NUT SET - MARI. (RARE SET; TOUGH TO FIND THESE GUYS)**
- _____260. **N THREE FRUITS STIPPLED RUFFLED BOWL WITH RIBBED EXTERIOR - EMERALD GREEN (A SUPER, SUPER ITEM WITH GREAT COLOR AND IRID. - RARE)**
- _____261. **N WISHBONE SINGLE LILY EPERGNE - MARI. (RARE AND DESIRABLE ITEM; NICE SATINY COLOR)**
- _____262. **9" N PEACOCKS PLATE WITH RIBBED EXTERIOR - ELEC. BLUE (RARE AND DESIRABLE; HAS SOME EXCESS GLASS; GREAT COLOR)**
- _____263. **8 1/2 - 9" N G & C VARIANT BOWL WITH PIE CRUST EDGE AND RIBBED EXTERIOR - ELEC. BLUE (RARE AND DESIRABLE WITH NICE IRID.)**
- _____264. 9" N G & C Bowl with Pie Crust Edge and Ribbed Exterior - Amy. (nice color and irid.)
- _____265. 9" N G & C Ruffled Bowl with Basketweave Exterior - Dk. Mari. (nice dark color)
- _____266. Pair Federal Glass Co. 2" Candlesticks in Original Box - Mari. (very unusual set in original box - neat)
- _____267. 9" Drape Vase - Amber (not sure of item)
- _____268. 6" Tall Flute Flat Top Vase - Mari. (not sure of item)
- _____269. Novelty Ice Bucket with Metal Handle - Lt. Mari. (scarce and unusual novelty - different)
- _____270. **DUGAN STRAWBERRY SINGLE LILY EPERGNE - PUR. (RARE AND DESIRABLE; NICE SATINY FINISH - A TOUGH ITEM)**
- _____271. Dugan Circle Scroll Jack in the Pulpit Hat - Mari. (rare shape; nice color and irid.)
- _____272. 7" Dugan Persian Garden Plate with Basketweave Exterior - White (scarce; nice color and irid.)
- _____273. 7" Tall Dugan Ribbed Jack in the Pulpit Vase - Pur. (desirable shape - really nice)
- _____274. 7" Dugan (?) Ribbed Jack in the Pulpit Vase - Mari. (nice satiny finish)
- _____275. **8 3/4 - 9" M'BURG PEACOCK AT THE URN "MYSTERY" BOWL WITH 3 IN 1 EDGE - MARI. (VERY SCARCE; NICE SATINY FINISH)**
- _____276. 9" M'burg Rays and Ribbons Bowl with 3 in 1 Edge - Pur. (super irid.; a very attractive item)
- _____277. 10" M'burg Rays and Ribbons Bowl - Lt. Mari.
- _____278. 7" M'burg Hanging Cherries Ice Cream Shaped Bowl - Amy. (satiny and very scarce; nice)
- _____279. 7" M'burg Hanging Cherries Ice Cream Shaped Bowl - Mari. (another nice satiny example)
- _____280. **8 1/2 - 9" FENTON DRAGON AND LOTUS ICE CREAM SHAPED BOWL - AMBER (RARE BASE COLOR WITH PRETTY NICE IRID.)**
- _____281. 11" Tall Fenton Plume Panels Swung Vase - Blue (really nice example with wonderful irid.)
- _____282. Fenton Stretch Fan Vase - Ice Green (scarce; nice color and irid.)
- _____283. Fenton Stretch ftd. Nut Cup - Celeste Blue (scarce little guy - desirable)
- _____284. 6" Fenton Stippled Rays Sauce - Reverse Amberina (scarce color; has chip off base)
- _____285. **9" FENTON HOLLY FLAT PLATE - GREEN (RARE AND DESIRABLE; HAS SMALL CHIP ON CINDER NEAR EDGE)**
- _____286. **9" FENTON HOLLY FLAT PLATE - CLAMBROTH (SCARCE; NICE COLOR AND IRID.)**
- _____287. 7" Fenton Acorn Low Ruffled Bowl - Mari. / Moonstone (rare and desirable)
- _____288. 8" Fenton Peacock at the Urn Ruffled Bowl - Dk. Mari. (really nice example; nice color)
- _____289. 11" Fenton Plume Panels Swung Vase - Blue (super irid.; very attractive)
- _____290. Fenton Orange Tree Shaving Mug - Blue (super irid.)
- _____291. 10" Imperial Beaded Bullseye Swung Vase - Dk. Mari. (nice dark color - really nice item)
- _____292. 8" Imperial Cobblestone Ruffled Bowl - Pur. (super color and irid.)
- _____293. Imperial Optic and Buttons Stemmed Goblet - Mari. (signed with Iron Cross; nice color)
- _____294. 10" Tall Imperial Wide Panel Swung Vase - Mari. / Milk Glass (attractive and desirable; nice)
- _____295. **9" IMPERIAL GRAPE RUFFLED BOWL - P. OPAL. (ONE OF A COUPLE KNOWN - VERY RARE; HAS CHIP ON EDGE)**
- _____296. **WESTMORELAND CAROLINA DOGWOOD 6 RUFFLED BOWL - BLUE OPAL. (RARE AND DESIRABLE; IRID. A BIT LIGHTER IN CENTER)**
- _____297. Westmoreland Louisa ftd. Flared Plate - Mari. (satiny; nice)
- _____298. 6" Fenton Cherry Chain Flared Plate with Orange Tree Exterior - Mari. (scarce; a bit lighter in center)
- _____299. European Asters Stemmed Doughnut Tray - Mari. (rare item; haven't seen this shape before)
- _____300. **EUROPEAN BERRY BAND STEMMED WINE GLASS - MARI. (VERY SCARCE ITEM; NICE DARK COLOR AND VERY DESIRABLE)**
- _____301. Imperial Soda Gold Water Pitcher - Pastel Mari. (super example with nice irid.)
- _____302. 8 - 8 1/2" Imperial Acanthus Deep Round Bowl - Pur. (super color and irid.; small flake on edge)
- _____303. 7 1/2 - 8" Imperial Open Rose ftd. Round Bowl - Pur. (very scarce; nice color and irid.)
- _____304. 8 1/2 - 8 3/4" Imperial Grape 8 Ruffled Low Bowl - Green (a bit better than Helios, not bad)
- _____305. 8 1/2 - 9" Imperial Embossed Scroll Large Deep Round Bowl with File Exterior - Pur. (odd shape being round; nice irid.)
- _____306. Imperial Pansy Oval Relish Tray - Amber (super example with bright blue highlights)
- _____307. Imperial Heavy Grape Handled Punch Cup - Helios Green (scarce, tough to find)
- _____308. (2) Imperial Octagon Stemmed Wine Glasses - Mari. (selling choice, one a little darker)
- _____309. Imperial Octagon Large Collar Base Tumbler - Dk. Mari. (nice dark color and irid.)
- _____310. 7 1/2" Imperial Frosted Block Flat Plate - Clambroth (great irid.)
- _____311. Imperial Hattie Rose Bowl - Mari. (cracked but a rare item)
- _____312. Imperial Twins 6 Ruffled Ind. Berry Bowl - Smoke (super color and irid.; nice)
- _____313. Newer Fenton Goldfish Vase - Pur. (nice)
- _____314. Newer Fenton Floral (?) Covered Compote - Pur. (nice)
- _____315. **WHO KNOWS?!?**

