



# BURNS

AUCTION SERVICE

## Lincoln Land Convention Auction

Friday & Saturday,  
June 5 & 6, 1998

Friday: Preview 3 pm, Auction 6 pm

Lots 1-175

Saturday: Preview 8 am, Auction 9 am

Lots 176-end

*at the*

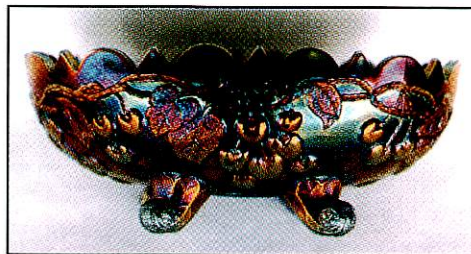
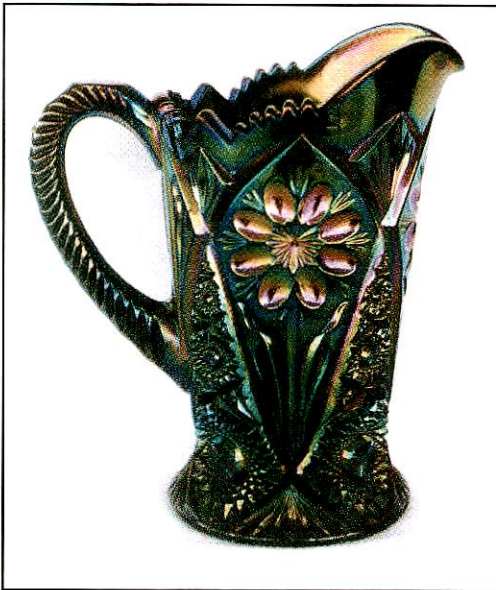
**Best Western-Midway Hotel**

5105 Howell Avenue

Milwaukee, Wisconsin 53207

**414-769-2100**

*(Just take Airport Exit 318 off I-94 then left on Howell Ave.)*





This year's Lincoln Land Convention Auction should be a barn-burner. At this auction we will be selling a portion of the collection of John & Ruth Phillips from Florida. They are well known for buying items with great color, quality, and rarity and this auction will demonstrate that point. There will be something for everyone... be sure to make the trip, it will be worth your effort.

The Best Western-Midway Hotel will host the event. Be sure to make your reservations ASAP as the hotel is filling up. You should call the hotel direct at 414-769-2100 and be sure to mention the Lincoln Land Convention.

Mail bids, e-mail bids, etc. are due by Monday, June 1st, 1998. And again to stress this point... from here Tom will be heading to Modesto, California for the NCCC Convention and then will be at ICGA in Kansas City... so don't expect mail bids too soon!

**CHECK OUT BURNS AUCTION SERVICE ON THE WEB!**

Visit our new Web site for information on upcoming auctions, complete auction listings and photos of auction highlights. You can e-mail your bids or requests for information.

<http://zeus.kspress.com/woodslnd/burnsauction> email: [brnzauctsv@aol.com](mailto:brnzauctsv@aol.com)

**Burns Auction Service**

Tom Burns  
P.O. Box 608  
Bath, New York 14810  
(607) 776-7942

Bill Richards  
44 Water St., Poland, OH 44514  
(330) 757-2001  
FAX (330) 757-4917

Bill Richards, III  
2253 Country Lane  
Poland, OH 44514  
(330) 755-2620

Maid Bids honored under the following conditions:

1. No deposit required. Bidders will take full responsibility to honor any and all bids we execute for them. Payment in full plus postage and handling required after notification and before we ship any item to them.
2. Items are bid on in perfect condition with average or above average iridescence OR as listed in the brochures. Bids will not be carried out when damage on an item has been found during the auction. **PEOPLE PRESENT AT AUCTION ARE RESPONSIBLE FOR FINDING ANY PINHEADS, WEAR, SPOTTINESS, MANUFACTURER'S DEFECTS OR ANY OTHER MINOR FLAWS, ETC.**
3. Successful bidders will be notified by collect call from the auctioneer (**so be sure to include phone number**).
4. Phone inquiries about the glass or any other questions are welcome.
5. If you have some other person at the auction bidding for you, they must pay for the item before taking it.
6. Any terms or conditions given the day of the auction will supersede any previously published information.
7. Mail, Email, FAX and Phone bids due by Monday, June 1, 1998.

- |   |  |
|---|--|
| <p>___ 1. N Singing Birds Handled Mug - Amy. (great color and irid. - nice tint)</p> <p>___ 2. N Singing Birds Handled Mug - Green (really nice satiny finish; very scarce)</p> <p>___ 3. <b>N DANDELION HANDLED MUG WITH KNIGHTS TEMPLAR ADVERTISING - MARI. (RARE AND DESIRABLE; NICE COLOR AND IRID.)</b></p> <p>___ 4. N Drapery Swung Vase - Ice Green (very scarce and very desirable; may have slight roughness)</p> <p>___ 5. <b>N DRAPERY SWUNG VASE - AQUA / MARI. (RARE AND VERY DESIRABLE; NICE MARI. OVERLAY; A TOUGH ITEM!)</b></p> <p>___ 6. N Drapery Tri-Cornered Covered Candy Dish - Ice Green (rare - super color and irid.; really nice)</p> <p>___ 7. N Drapery Tri-Cornered Covered Candy Dish - Ice Blue (very scarce; perfect with nice irid.)</p> <p>___ 8. N Drapery Tri-Cornered Covered Candy Dish - Pur. (very scarce; nice color and irid.)</p> <p>___ 9. N Drapery Tri-Cornered Covered Candy Dish - Dk. Mari. (super color and irid.)</p> <p>___ 10. <b>N PULLED HUSK CORN VASE - PUR. (EXTREMELY RARE AND DESIRABLE ITEM; SOLD AT LINCOLN LAND A FEW YEARS AGO AT THE TOMCZAK AUCTION; A SUPER PIECE)</b></p> <p>___ 11. N Lattice and Poinsettia ftd. Flared Plate with Ribbed Exterior - Custard / Blue Stain (rare and desirable; pretty good stain)</p> | <p>___ 12. N Lattice and Poinsettia ftd. Ruffled Bowl with Ribbed Exterior - Custard / Blue Stain (rare and very desirable; super stain and perfect)</p> <p>___ 13. <b>N SPRINGTIME COVERED BUTTER DISH - GREEN (RARE AND DESIRABLE WITH EXCELLENT IRID. AND CORRECT BOTTOM)</b></p> <p>___ 13A <b>N SPRINGTIME 7 PC. WATER SET - GREEN (RARE TO FIND THIS SET COMPLETE; NICE COLOR AND IRID.)</b></p> <p>___ 14. N Panelled Holly 2 Handled 2 Sided Candy Dish - Green</p> <p>___ 15. <b>N PANELLED HOLLY HANDLED SPOONER - GREEN (EXTREMELY RARE ITEM; ONLY ONE KNOWN IN THIS COLOR - WHERE DO YA FIND THEM?)</b></p> <p>___ 16. N Beaded Cable ftd. Ruffled Rose Bowl - Dk. Mari. (nice color and irid.)</p> <p>___ 17. <b>N BEADED CABLE FTD. RUFFLED ROSE BOWL WITH RIBBED INTERIOR - SMOKEY BLUE (EXTREMELY RARE BASE GLASS COLOR - VERY DIFFERENT)</b></p> <p>___ 17A <b>N TORNADO VASE - WHITE (EXTREMELY RARE AND DESIRABLE ITEM; PERFECT WITH GREAT COLOR AND IRID.)</b></p> <p>___ 18. N Large Size Tornado Vase - Amy. (rare and tough; irid. a bit silvery)</p> |
|---|--|



- \_\_\_\_ 19. N Small Size Tornado Vase - Pur. (really nice color; has smoothed chip on base)
- \_\_\_\_ 20. **9" N STIPPLED THREE FRUITS PLATE WITH RIBBED EXTERIOR - AQUA / MARI. (EXTREMELY RARE COLOR - SUPER MARI. OVERLAY)**
- \_\_\_\_ 21. 9" N STIPPLED THREE FRUITS PLATE WITH RIBBED EXTERIOR - DK. PUR. (ABSOLUTELY FANTASTIC BLUE IRID. - A SUPER EXAMPLE)
- \_\_\_\_ 22. 9" N STIPPLED THREE FRUITS PLATE WITH RIBBED EXTERIOR - BLUE (RARE AND DESIRABLE; HAS BLUE HIGHLIGHTS)
- \_\_\_\_ 23. 9" N Stippled Three Fruits Plate with Ribbed Exterior - Amy. (very scarce and desirable; gold highlights)
- \_\_\_\_ 24. **8 3/4" N STIPPLED THREE FRUITS RUFFLED BOWL WITH RIBBED EXTERIOR - GREEN (RARE AND VERY DESIRABLE; GOLD HIGHLIGHTS - A TOUGHIE!)**
- \_\_\_\_ 25. **9" N STIPPLED THREE FRUITS RUFFLED BOWL WITH RIBBED EXTERIOR - SAPPHIRE (VERY RARE AND VERY DESIRABLE; GREAT COLOR AND IRID.)**
- \_\_\_\_ 26. **7 1/2" N FRUIT AND FLOWERS 6 RUFFLED BOWL WITH BASKETWEAVE EXTERIOR - SAPPHIRE (EXTREMELY RARE BASE COLOR WITH NICE PASTEL IRID.)**
- \_\_\_\_ 27. 7 1/2" N Fruit and Flowers 6 Ruffled Bowl with Basketweave Exterior - Elec. Blue (rare color with super blue highlights; small chip on one point)
- \_\_\_\_ 28. 9 1/2" N Fruit and Flowers Large 8 Ruffled Bowl with Basketweave Exterior - Pur. (scarce; nice satiny finish)
- \_\_\_\_ 29. N Three Fruits Medallion ftd. Ruffled Bowl with Meander Exterior - Dk. Mari. (really nice dark color and irid.)
- \_\_\_\_ 30. **N THREE FRUITS MEDALLION FTD. RUFFLED BOWL WITH MEANDER EXTERIOR - AQUA OPAL. (RARE AND VERY DESIRABLE; NICE PASTEL FINISH AND OPAL.)**
- \_\_\_\_ 31. **N FRUIT AND FLOWERS STEMMED HANDLED BON BON - AQUA OPAL. (RARE AND VERY DESIRABLE; SUPER IRID. AND OPAL. - WOW!)**
- \_\_\_\_ 32. **N FRUIT AND FLOWERS STEMMED HANDLED BON BON - ICE BLUE (RARE AND VERY DESIRABLE; GREAT COLOR AND IRID.)**
- \_\_\_\_ 33. **N FRUIT AND FLOWERS STEMMED HANDLED BON BON - ELEC. BLUE (SUPER BLUE IRID.; REALLY FINE EXAMPLE)**
- \_\_\_\_ 34. N Fruit and Flowers Stemmed Handled Bon Bon - Dk. Pur. (scarce; really nice color and irid.)
- \_\_\_\_ 35. N Fruit and Flowers Stemmed Handled Bon Bon - Green (scarce; nice satiny irid.)
- \_\_\_\_ 36. N Fruit and Flowers Stippled Stemmed Handled Bon Bon - Mari. (very scarce variation; nice)
- \_\_\_\_ 37. **N THREE FRUITS PLATE WITH BASKETWEAVE EXTERIOR - EMERALD GREEN (ABSOLUTELY FANTASTIC BRIGHT IRID.; SUPER, SUPER)**
- \_\_\_\_ 38. N Three Fruits Plate with Basketweave Exterior - Amy. (very scarce; irid. is half gold - half blue)
- \_\_\_\_ 39. N Three Fruits Plate with Basketweave Exterior - Dk. Mari. (super example; rich, dark irid.)
- \_\_\_\_ 40. **N THREE FRUITS 8 RUFFLED BOWL WITH PLAIN EXTERIOR - HONEY AMBER (RARE AND UNUSUAL TINT; REALLY NICE IRID.)**
- \_\_\_\_ 41. N Three Fruits Bowl with Pie Crust Edge and Basketweave Exterior - Green (really nice satiny finish; great irid.)
- \_\_\_\_ 42. **N SINGING BIRD 7 PC. WATER SET - GREEN (RARE AND DESIRABLE SET; NICE COLOR; TINY NICK ON BASE OF ONE TUMBLER)**
- \_\_\_\_ 43. N Singing Bird Tumbler - Green (has bright bronze irid.; really nice)
- \_\_\_\_ 44. **N NIPPON 8 RUFFLED BOWL WITH BASKETWEAVE EXTERIOR - EMERALD GREEN (SUPER, SUPER EXAMPLE; REALLY NICE IRID.)**
- \_\_\_\_ 45. **N GOOD LUCK 8 RUFFLED BOWL WITH RIBBED EXTERIOR - AQUA OPAL. (VERY RARE AND VERY DESIRABLE; PASTEL WITH NICE IRID.)**
- \_\_\_\_ 46. **N GOOD LUCK 8 RUFFLED BOWL WITH RIBBED EXTERIOR - SAPPHIRE (RARE AND VERY DESIRABLE; HAS BRIGHT BLUE / GREEN IRID.)**
- \_\_\_\_ 47. **N GOOD LUCK 8 RUFFLED BOWL WITH RIBBED EXTERIOR - EMERALD GREEN (ABSOLUTELY BEAUTIFUL - BRIGHT GREEN AND BLUE HIGHLIGHTS)**
- \_\_\_\_ 48. N Good Luck 8 Ruffled Bowl with Ribbed Exterior - Pur. (very scarce and desirable; has blue / red highlights)
- \_\_\_\_ 49. N Good Luck Bowl with Pie Crust Edge and Ribbed Exterior - Lt. Mari. (average irid.; a bit light in center)
- \_\_\_\_ 50. **N GOOD LUCK STIPPLED PLATE WITH RIBBED EXTERIOR - BLUE (RARE AND VERY DESIRABLE; HAS NARROW BASE AND NICE IRID.)**
- \_\_\_\_ 51. N Good Luck Stippled 8 Ruffled Bowl with Ribbed Exterior - Dk. Mari. (nice dark color; has narrow base; nice)
- \_\_\_\_ 52. **N GOOD LUCK PLATE WITH BASKETWEAVE EXTERIOR - PUR. (RARE AND DESIRABLE; PERFECT - SATINY IRID.)**
- \_\_\_\_ 53. N Good Luck Plate with Basketweave Exterior - Lt. Mari. (rare and desirable; light color but bright highlights)
- \_\_\_\_ 54. N Good Luck 8 Ruffled Bowl with Basketweave Exterior - Pur. (very scarce and desirable; has really nice multi-colored irid.)
- \_\_\_\_ 55. **N ROUND HANDLED BUSHEL BASKET - SAPPHIRE (VERY RARE AND VERY DESIRABLE; GREAT COLOR)**
- \_\_\_\_ 56. N Round Handled Bushel Basket - Aqua Opal. (rare and desirable; opal. on the light side)
- \_\_\_\_ 57. N Round Handled Bushel Basket - Ice Green (very scarce and desirable; really nice irid.)
- \_\_\_\_ 58. N Round Handled Bushel Basket - Green (absolutely fantastic irid.; has small chip on inside edge)
- \_\_\_\_ 59. N Round Handled Bushel Basket - Blue / Elec. Blue (scarce - nice example with blue highlights)
- \_\_\_\_ 60. **N ROUND HANDLED BUSHEL BASKET - LT. AMY. OR VIOLET (VERY SCARCE; HAS LIGHTER BASE COLOR WITH GOLDISH IRID.)**
- \_\_\_\_ 61. **N ROUND HANDLED BUSHEL BASKET - CRYSTAL / GOLD FLASH (ONLY ONE I'VE SEEN - WE'VE SOLD THIS ONE BEFORE)**
- \_\_\_\_ 62. N Nippon Bowl with Pie Crust Edge and Ribbed Exterior - Ice Blue (very scarce; nice irid.)
- \_\_\_\_ 63. 8" N Diamond Point Swung Vase - Blue (very rare color for this item; neat! has pinhead)
- \_\_\_\_ 64. **11" N THIN RIB SWUNG VASE - DK. SAPPHIRE / MARI. (VERY ODD COLOR; A REALLY NEAT PIECE)**
- \_\_\_\_ 65. **9 1/4" N STRAWBERRY STIPPLED PLATE WITH RIBBED EXTERIOR - GREEN (EXTREMELY RARE; HAS NICE BRIGHT GREEN HIGHLIGHTS; VERY DESIRABLE)**
- \_\_\_\_ 66. 9" N Strawberry Plate with Basketweave Exterior - Pur. (very scarce; has really nice satiny finish)
- \_\_\_\_ 67. 8 3/4" N Strawberry Bowl with Pie Crust Edge and Plain Exterior - Green (super blue highlights - wonderful)
- \_\_\_\_ 68. 8 3/4" N Strawberry Bowl with Pie Crust Edge and Plain Exterior - Amy. (nice color and irid.; gold and red highlights)

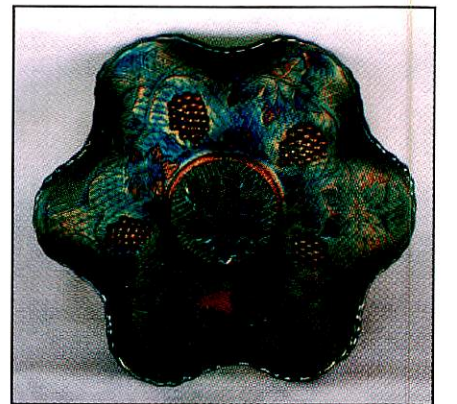
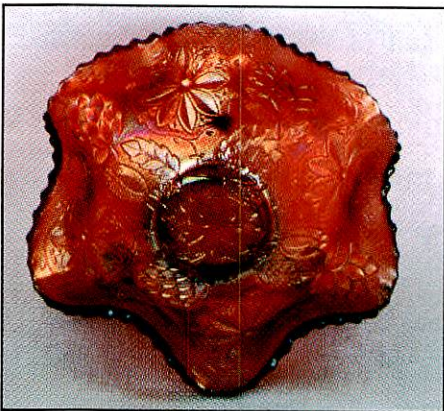
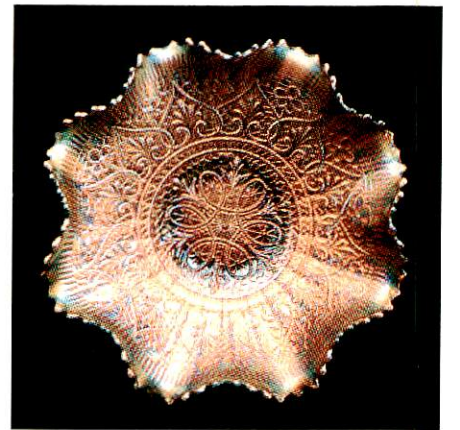
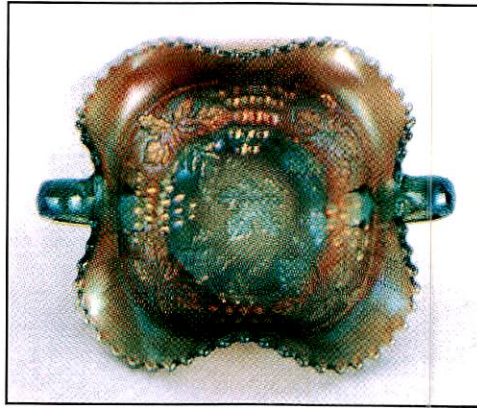
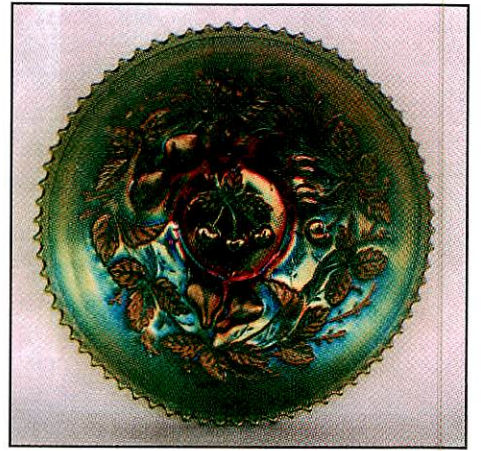
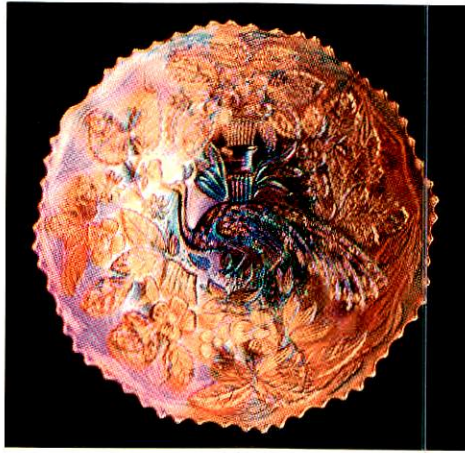
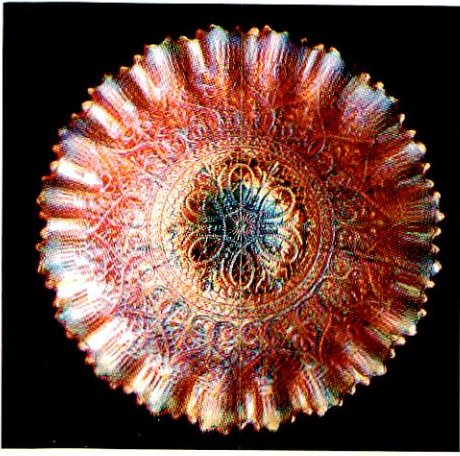


69. **8 1/2" N STRAWBERRY BOWL WITH PIE CRUST EDGE AND BASKETWEAVE EXTERIOR - LILAC (ODD TINT; REALLY NICE SATINY BASE GLASS)**
70. 7 1/2" N Wild Strawberry Handgrip Plate with Basketweave Exterior - Green (very scarce and desirable)
71. 6" N Wild Strawberry 6 Ruffled Sauce - Pur. (outstanding irid.; a real cutie)
72. 8 1/2" N Strawberry 8 Ruffled Bowl with Basketweave Exterior - Amy. (satiny finish; nice irid.)
73. 8 3/4" N Strawberry 8 Ruffled Bowl with Basketweave Exterior - Dk. Mari. (nice color and irid.)
74. **N EMBROIDERED MUMS FLAT PLATE WITH RIBBED EXTERIOR - ICE GREEN (EXTREMELY RARE COLOR WITH SUPER IRID. - NICE!)**
75. **N EMBROIDERED MUMS STEMMED HANDLED BON BON - WHITE (VERY RARE AND VERY DESIRABLE; ACTUALLY ONE OF THE BETTER EXAMPLES)**
76. **8 3/4" N EMBROIDERED MUMS 8 RUFFLED BOWL WITH RIBBED EXTERIOR - ICE BLUE (RARE AND DESIRABLE; HAS A NON-IRIDIZED EXTERIOR - REALLY NICE)**
77. **8 3/4" N EMBROIDERED MUMS 8 RUFFLED BOWL WITH RIBBED EXTERIOR - DK. MARI. (ABSOLUTELY BEAUTIFUL - DARK RICH COLOR AND IRID.)**
78. 8 3/4" N Embroidered Mums 8 Ruffled Bowl with Ribbed Exterior - Pur. (rare and very desirable; really bright interior irid.)
79. N Memphis Handled Punch Cup - Dk. Mari. (great color and irid.)
80. **N MEMPHIS 8 PC. FRUIT BOWL SET - GREEN (RARE AND VERY DESIRABLE; VERY, VERY DIFFICULT SET TO FIND)**
81. (3) N Memphis Handled Punch Cups - Pur. (selling choice)
82. **6 1/2" N EAGLE FURNITURE CO. HANDGRIP PLATE WITH BASKETWEAVE EXTERIOR - AMY. (RARE AND VERY DESIRABLE; HAS REDDISH / GOLD IRID.)**
83. **6 1/2" N FERN BRAND CHOCOLATES 2 SIDED CARD TRAY WITH BASKETWEAVE EXTERIOR - AMY. (RARE AND DESIRABLE; NICE IRID.; A SUPER EXAMPLE)**
84. **6 1/4" N FERN BRAND CHOCOLATES FLAT PLATE WITH BASKETWEAVE EXTERIOR - AMY. (RARE AND VERY DESIRABLE; IRID. GOES FROM GREEN TO GOLD)**
85. **N RASPBERRY TUMBLER - ICE GREEN (RARE AND EXTREMELY DESIRABLE; SUPER IRID.)**
- 85A **N RASPBERRY HANDLED MILK PITCHER - LIME ICE GREEN (ABSOLUTELY SUPER ITEM; PERFECT WITH GREAT BASE GLASS COLOR AND IRID.)**
86. N Raspberry Handled Milk Pitcher - Green (a super example with great color and irid. - nice)
87. N Raspberry Handled Water Pitcher - Dk. Mari. (a super, super example - great color and irid.)
88. N G & C Stippled Handled Punch Cup - Green (a beautiful iridized on inside - has gold and blue highlights)
89. **N G & C STIPPLED HANDLED PUNCH CUP - AQUA / TEAL OR RENNINGER (RARE COLOR FOR ONE OF THESE - HAS SILVERY / GOLD IRID.)**
90. **8 3/4" N G & C VARIANT 8 RUFFLED BOWL WITH RIBBED EXTERIOR - SAPPHIRE (RARE AND DESIRABLE COLOR FOR THIS ITEM - GETTING TOUGH TO FIND; HAS LIGHT GOLD HIGHLIGHTS)**
91. **9" N G & C VARIANT STIPPLED PLATE WITH OLD ROSE DISTILLING CO. ADV. - GREEN (RARE AND DESIRABLE; HAS BRONZE IRID. - NICE)**
92. 8" N G & C 2 Sided Card Tray with Basketweave Exterior - Green (scarce shape; has satiny gold irid.)
93. **N G & C FTD. HATPIN HOLDER - DK. MARI. (VERY SCARCE; NICE DARK COLOR AND IRID.)**
94. N G & C Stippled Banded ftd. Banana Boat - Dk. Mari. (rare and very desirable; has super irid. - pink highlights)
95. **N G & C FTD. CENTERPIECE BOWL (OR FRUIT BOWL) STRAIGHT UP POINTS - ICE GREEN (SUPER RARE AND VERY DESIRABLE; GREAT COLOR AND IRID.)**
96. N G & C ftd. Turned In Centerpiece Bowl - Pur. (very scarce; super irid.; chip on one grape)
97. **10 1/2" N G & C LARGE ICE CREAM BOWL WITH BASKETWEAVE EXTERIOR - BLUE (VERY RARE AND VERY DESIRABLE COLOR FOR THIS ITEM; NICE IRID.)**
98. 10 3/4" N G & C Large Ice Cream Bowl with Basketweave Exterior - Pur. (very scarce item with nice multi-colored irid.)
99. N G & C Cup and Saucer with Basketweave Exterior - Pur. (very scarce with really nice color and irid.)
100. **N G & C STIPPLED HANDLED BON BON WITH BASKETWEAVE EXTERIOR - AQUA (EXTREMELY RARE AND VERY DESIRABLE)**
101. **9" N G & C STIPPLED PLATE WITH BASKETWEAVE EXTERIOR - GREEN (VERY RARE AND VERY DESIRABLE; HAS SORTA RADIUM IRID.)**
102. 9" N G & C Plate with Plain Exterior - Green (scarce; satiny multi-colored irid.)
103. 9 1/4" N G & C ftd. Plate with Meander Exterior - Dk. Mari. (super color and super irid. - great item)
104. **N G & C 2 PC. CANDLELAMP - GREEN (RARE AND DESIRABLE; NICE COLOR AND IRID.)**
105. **9 3/4" N G & C STIPPLED LARGE 8 RUFFLED BOWL WITH BASKETWEAVE EXTERIOR - ELEC. BLUE (ABSOLUTELY SUPER ITEM; GREAT BLUE IRID. - A REAL SHOW STOPPER)**
106. **N G & C MASTER BERRY BOWL - PEARLIZED CUSTARD / NUTMEG (EXTREMELY RARE ITEM; GREAT NUTMEG AND IRID.)**
107. 9 1/4" N G & C FTD. PLATE WITH MEANDER EXTERIOR - ICE GREEN (VERY RARE AND VERY DESIRABLE; SUPER IRID. AND QUALITY)
108. **8 3/4" N G & C FTD. RUFFLED BOWL WITH MEANDER EXTERIOR - ICE GREEN (ANOTHER RARE AND UNUSUAL ITEM)**
109. N Daisy and Plume Stemmed Ruffled Compote with Fern Interior - Green (scarce with the interior pattern; nice color)
110. **N EIGHT SIDED HANDLED BUSHEL BASKET - ICE BLUE (RARE AND VERY DESIRABLE COLOR; NICE)**
111. N Eight Sided Handled Bushel Basket - Blue (very scarce color; average irid.)
112. N Eight Sided Handled Bushel Basket - White (very scarce and frosty)
113. N Blackberry Stemmed Ruffled Compote with Basketweave Exterior - Pur. (super, super bright irid.; a real beauty)
114. **N HARVEST POPPY STEMMED RUFFLED COMPOTE - MARI. (RARE PATTERN; NICE SATINY IRID.)**
115. **N BLOSSOMTIME STEMMED RUFFLED COMPOTE WITH FLORAL EXTERIOR - PUR. (ABSOLUTELY FANTASTIC BRIGHT IRID.; A SUPER EXAMPLE)**
116. **N GREEK KEY 7 PC. TANKARD WATER SET - PUR. (RARE AND DESIRABLE; OUTSTANDING COLOR AND IRID.)**
117. **N PEACOCK AT THE FOUNTAIN FTD. RUFFLED FRUIT BOWL - BLUE (RARE AND DESIRABLE; NICE IRID. WITH BLUE HIGHLIGHTS)**

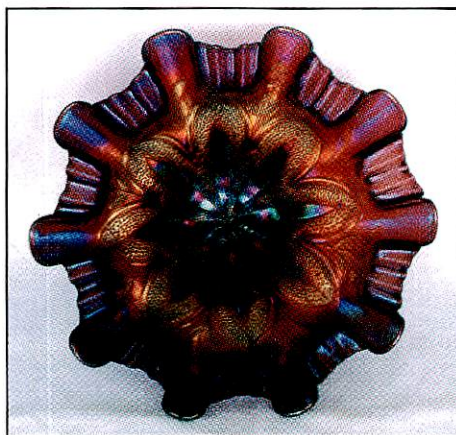
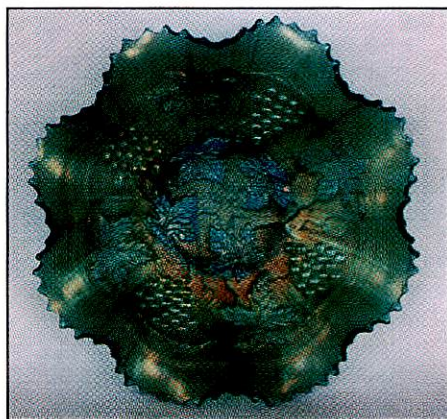
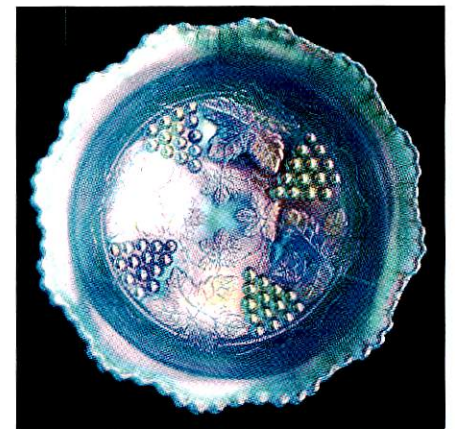
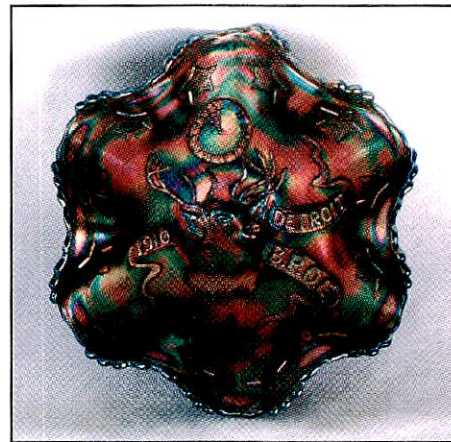
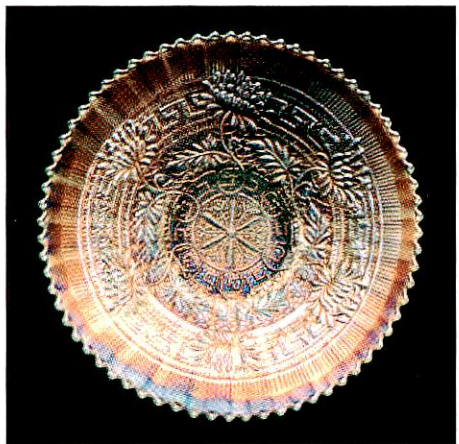
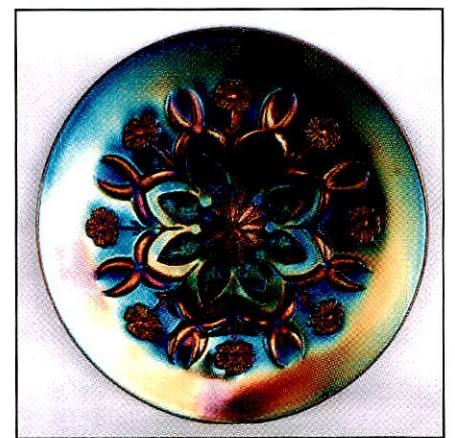
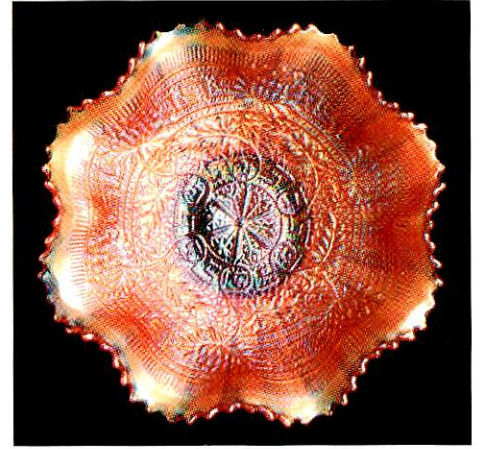


- \_\_\_\_\_ 118. 9 1/2" N WISHBONE BOWL WITH PIE CRUST EDGE AND BASKETWEAVE EXTERIOR - WHITE (RARE AND DESIRABLE - FROSTY WITH NICE MULTI-COLORED IRID.)
- \_\_\_\_\_ 119. 8 1/2" N WISHBONE FTD. TRI-CORNERED PLATE WITH RUFFLES AND RINGS EXTERIOR - DK. MARI. (RARE AND DESIRABLE; SUPER DARK COLOR AND IRID.)
- \_\_\_\_\_ 120. N HEART AND FLOWERS STEMMED RUFFLED COMPOTE WITH RIBBED EXTERIOR - RENNIGER BLUE (EXTREMELY RARE BASE COLOR; A GREAT ITEM WITH NICE IRID. - A REAL TOUGH PIECE)
- \_\_\_\_\_ 121. N HEART AND FLOWERS BOWL WITH PIE CRUST EDGE AND RIBBED EXTERIOR - ELEC. BLUE (ABSOLUTELY SUPER COLOR AND IRID.; RARE TO FIND - NICE)
- \_\_\_\_\_ 122. N HEART AND FLOWERS STEMMED RUFFLED COMPOTE WITH RIBBED EXTERIOR - BLUE / ELEC. BLUE (VERY SCARCE AND VERY DESIRABLE; BRIGHT BLUE HIGHLIGHTS)
- \_\_\_\_\_ 123. N HEART AND FLOWERS STEMMED RUFFLED COMPOTE WITH RIBBED EXTERIOR - GREEN (ANOTHER SUPER EXAMPLE - RARE WITH BRIGHT IRID.)
- \_\_\_\_\_ 124. 9" N HEART AND FLOWERS PLATE WITH RIBBED EXTERIOR - GREEN (RARE AND DESIRABLE; BRIGHT IRID. IN CENTER - LIGHTER ON EDGES)
- \_\_\_\_\_ 125. N HEART AND FLOWERS STEMMED RUFFLED COMPOTE WITH RIBBED EXTERIOR - LAVENDER (EXTREMELY RARE BASE COLOR WITH SUPER IRID. - NICE)
- \_\_\_\_\_ 126. 8 3/4" N HEART AND FLOWERS 8 RUFFLED BOWL WITH RIBBED EXTERIOR - LAVENDER (RARE BASE COLOR - HAS BRIGHT IRID. IN CENTER)
- \_\_\_\_\_ 127. N HEART AND FLOWERS BOWL WITH PIE CRUST EDGE AND RIBBED EXTERIOR - DK. MARI. (EXTREMELY RARE SHAPE WITH FANTASTIC COLOR)
- \_\_\_\_\_ 128. N HEART AND FLOWERS STEMMED RUFFLED COMPOTE WITH RIBBED EXTERIOR - ICE GREEN (RARE AND DESIRABLE; IRID. A BIT SILVERY)
- \_\_\_\_\_ 129. 8 3/4" N HEART AND FLOWERS 8 RUFFLED BOWL WITH RIBBED EXTERIOR - ICE GREEN (RARE AND DESIRABLE; GREAT COLOR AND IRID. - NICE)
- \_\_\_\_\_ 130. 8 3/4" N HEART AND FLOWERS 8 RUFFLED BOWL WITH RIBBED EXTERIOR - AQUA / MARI. (EXTREMELY RARE BASE COLOR; SUPER IRID.)
- \_\_\_\_\_ 131. N HEART AND FLOWERS STEMMED RUFFLED COMPOTE WITH RIBBED EXTERIOR - AQUA OPAL. (RARE AND DESIRABLE; NICE COLOR AND OPAL. ON EDGE)
- \_\_\_\_\_ 132. 9" N HEART AND FLOWERS BOWL WITH PIE CRUST EDGE AND RIBBED EXTERIOR - PUR. (RARE AND DESIRABLE; GREAT RED AND BLUE HIGHLIGHTS)
- \_\_\_\_\_ 133. 9" N HEART AND FLOWERS BOWL WITH PIE CRUST EDGE AND RIBBED EXTERIOR - PUR. (ANOTHER RARE AND VERY DESIRABLE ITEM; SUPER, SUPER COLOR AND IRID.)
- \_\_\_\_\_ 134. N HEART AND FLOWERS STEMMED COMPOTE WITH RIBBED EXTERIOR - PUR. (RARE AND VERY DESIRABLE; SUPER IRID. - REALLY NICE)
- \_\_\_\_\_ 135. N WIDE PANEL 4 LILY EPERGNE - GREEN (RARE AND DESIRABLE; GREAT COLOR AND SATINY IRID.; A REAL NICE EXAMPLE)
- \_\_\_\_\_ 136. 9" N Grape Leaves 8 Ruffled Bowl - Pur. (a beauty! has nice red and blue highlights)
- \_\_\_\_\_ 137. 10 1/2" AUSTRALIAN LARGE KOOKABURRA VARIANT DEEP ROUND BOWL - DK. PUR. (AN UNBELIEVABLE ITEM - VERY LARGE AND VERY UNUSUAL; REALLY DIFFERENT)
- \_\_\_\_\_ 138. 5 1/2" Australian Kookaburra 12 Ruffled Sauce - Dk. Mari. (rare and desirable; nice dark color)
- \_\_\_\_\_ 139. 9" X 7" AUSTRALIAN BUTTERFLY AND BOWER LARGE ROUND STEMMED COMPOTE - MARI. (EXTREMELY RARE AND VERY DESIRABLE; NICE COLOR)
- \_\_\_\_\_ 140. 9 3/4" AUSTRALIAN KANGAROO LARGE 16 RUFFLED BOWL - DK. MARI. (VERY RARE AND VERY DESIRABLE; SUPER COLOR AND IRID.)
- \_\_\_\_\_ 141. 9 1/2" AUSTRALIAN SWAN LARGE 16 RUFFLED BOWL - DK. MARI. (RARE AND DESIRABLE; REALLY NICE COLOR AND IRID.)
- \_\_\_\_\_ 142. 5 1/2" Australian Swan 8 Ruffled Sauce - Dk. Mari. (excellent example - great detail and irid.)
- \_\_\_\_\_ 143. 9 3/4" AUSTRALIAN KOOKABURRA LARGE 12 RUFFLED BOWL - MARI. (RARE AND VERY DESIRABLE; NICE COLOR AND DETAIL)
- \_\_\_\_\_ 144. 9 1/2" AUSTRALIAN KINGFISHER LARGE 12 RUFFLED BOWL - DK. PUR. (RARE AND VERY DESIRABLE; NICE COLOR)
- \_\_\_\_\_ 145. 5 1/2" Australian Kingfisher Variant 12 Ruffled Sauce - Dk. Pur. (rare and very desirable; nice color and irid.)
- \_\_\_\_\_ 146. 5 1/2" Australian Magpie 8 Ruffled Sauce - Dk. Pur. (super color and irid.; great detail)
- \_\_\_\_\_ 147. 10" Australian Thunderbird Large 12 Ruffled Bowl - Lt. Mari. (very scarce; nice detail)
- \_\_\_\_\_ 148. 4 1/2" TALL X 7 3/4" ACROSS AUSTRALIAN BUTTERFLY AND BELLS STEMMED 12 RUFFLED COMPOTE - DK. PUR. (VERY RARE AND DESIRABLE; NICE SHAPE AND COLOR)
- \_\_\_\_\_ 149. 3 1/4" TALL X 8" ACROSS AUSTRALIAN BUTTERFLY AND BELLS STEMMED CAKE PLATE - DK. MARI. (ANOTHER RARE ITEM IN A RARE SHAPE)
- \_\_\_\_\_ 150. 5 1/2" TALL X 9 1/2" ACROSS AUSTRALIAN BUTTERFLY AND WARATAH LARGE STEMMED CAKE PLATE - DK. PUR. (EXTREMELY RARE ITEM WITH GREAT COLOR AND IRID. - NICE ITEM)
- \_\_\_\_\_ 151. WESTMORELAND CORINTH JACK IN THE PULPIT VASE - BLUE OPAL. (RARE AND DESIRABLE; REALLY NICE IRID.; ATTRACTIVE)
- \_\_\_\_\_ 152. Westmoreland Corinth Jack in the Pulpit Vase - P. Opal. (very desirable; great opal. - light mari. overlay)
- \_\_\_\_\_ 153. Westmoreland Corinth Jack in the Pulpit Vase - Teal (scarce; nice irid.)
- \_\_\_\_\_ 154. Westmoreland Corinth Jack in the Pulpit Vase - Amber (scarce; nice irid.)
- \_\_\_\_\_ 155. 9" WESTMORELAND CAROLINA DOGWOOD 6 RUFFLED BOWL - BLUE OPAL. (RARE AND DESIRABLE - ONE OF THE BETTER EXAMPLES)
- \_\_\_\_\_ 156. 9 1/4" Westmoreland Scales 2 Sided Banana Dish with Wire Handle - P. Opal. (scarce shape; nice opal.; really unusual)
- \_\_\_\_\_ 157. 5 1/4" WESTMORELAND WOODLANDS FLARED VASE - MARI. (RARE AND VERY DESIRABLE; REALLY NICE COLOR)
- \_\_\_\_\_ 158. 10 1/4" Tall Jenkins Cut Flowers Large Cylinder Vase - Dk. Mari. (very scarce; quite nice color and irid.)
- \_\_\_\_\_ 159. (2) Sets of Beaded Necklaces with Matching Earrings - Dark (nice sets - selling choice)
- \_\_\_\_\_ 160. U.S. GLASS DOZEN ROSES FTD. FLARED BOWL - AMY. (EXTREMELY RARE AND VERY DESIRABLE; SUPER IRID.)











- \_\_\_\_\_ 161. 7 3/4" CZECH (EUROPEAN?) CLASSIC ARTS  
LARGE VASE - MARI. / GREEN STAIN (VERY  
RARE AND VERY DESIRABLE; GREAT COLOR,  
SIZE AND STAIN)
- \_\_\_\_\_ 162. SOWERBY DIVING DOLPHINS FTD. ROSE BOWL -  
AMY. (RARE AND VERY DESIRABLE; SUPER  
COLOR AND IRID. - PERFECT FEET)
- \_\_\_\_\_ 163. 4" Tall Westmoreland (?) Miniature Handled Basket /  
Salt Dip - Lt. Mari. (scarce miniature with nice irid.)
- \_\_\_\_\_ 164. IMPERIAL TIGER LILY 7 PC. WATER SET - AQUA /  
TEAL (EXTREMELY RARE BASE COLOR; A WELL-  
MATCHED SET THAT'S VERY DESIRABLE)
- \_\_\_\_\_ 165. IMPERIAL CHATELINE TUMBLER WITH MANUF.  
GROUND BASE - PUR. (RARE AND VERY DESIR-  
ABLE; TYPICAL SUPER BRIGHT IRID.; SLIGHT  
ROUGHNESS ON BASE)
- \_\_\_\_\_ 166. Imperial Grape Wine Decanter with no Stopper - Pur.  
(outstanding irid.)
- \_\_\_\_\_ 167. Imperial Grape Wine Decanter with no Stopper -  
Helios Green (silvery)
- \_\_\_\_\_ 168. Imperial Grape Stemmed Wine Glass - Helios Green  
(sorta lime green base glass)
- \_\_\_\_\_ 169. Imperial Grape Wine Decanter and Stopper - Dk. Mari.  
(stopper damaged)
- \_\_\_\_\_ 170. Imperial Grape Stemmed Wine Glass - Lt. Mari. (irid.  
on inside)
- \_\_\_\_\_ 171. Imperial Rococco Vase - Dk. Mari. (scarce - nice color  
and real nice irid.)
- \_\_\_\_\_ 172. Imperial Rococco Domed 6 Ruffled Compote - Mari.  
(nice irid.)
- \_\_\_\_\_ 173. Imperial Daisy Handled Flower Basket - Smoke (rare  
and desirable; great irid. - tough)
- \_\_\_\_\_ 174. Imperial Grape Handled Flower Basket - Pastel Mari.  
(scarce; super irid.)
- \_\_\_\_\_ 175. Imperial Waffle Block Handled Flower Basket - Mari.  
(nice color)
- \_\_\_\_\_ 176. (2) Imperial Cockatoo Hanging Wall Vases - Mari.  
(very scarce; selling choice - nice color)
- \_\_\_\_\_ 188. 10 1/4" IMPERIAL HATTIE CHOP PLATE - HELIOS  
GREEN (RARE, DESIRABLE - GETTING VERY  
TOUGH TO FIND)
- \_\_\_\_\_ 189. 12 3/4" Tall Imperial Beaded Bullseye Swung Vase -  
Pur. (super color and irid. - outstanding!)
- \_\_\_\_\_ 190. IMPERIAL POPPY SHOW VASE - MARI. (VERY  
SCARCE AND VERY DESIRABLE; REAL NICE  
IRID.)
- \_\_\_\_\_ 191. IMPERIAL LOGANBERRY VASE - GREEN (RARE  
AND DESIRABLE; PRETTY NICE COLOR AND  
IRID.)
- \_\_\_\_\_ 192. 8 1/2" Imperial Pansy 8 Ruffled Bowl - Pur. (super  
irid.; a bit out of round)
- \_\_\_\_\_ 193. 8" Imperial Sand and Shell Deep 8 Ruffled Bowl - Pur.  
(super color and irid. - attractive)
- \_\_\_\_\_ 194. Imperial 474 Handled Punch Cup - Dk. Mari. (nice  
color)
- \_\_\_\_\_ 195. M'BURG MITERED OVALS VASE - AMY.  
(ABSOLUTELY FANTASTIC! VERY RARE  
AND VERY DESIRABLE; HAS BLUE HIGH-  
LIGHTS; CHOICE ITEM IF YA WANT ONE!)
- \_\_\_\_\_ 196. M'BURG STRAWBERRY 6 RUFFLED COMPOTE -  
AMY. (RARE AND DESIRABLE; SUPER RADIUM  
FINISH)
- \_\_\_\_\_ 197. 10 1/2" M'burg Seaweed Large 6 Ruffled Bowl - Amy.  
(rare and desirable; super satiny; peeling on base)
- \_\_\_\_\_ 198. 9 1/2" M'burg Primrose 6 Ruffled Bowl - Amy. (scarce  
and desirable; super radium finish)
- \_\_\_\_\_ 199. 10 1/2" M'burg Blackberry Wreath Large Bowl with 3 in  
1 Edge - Green (radium and desirable; has chip on  
collar base)
- \_\_\_\_\_ 200. 11" TALL X 6 1/4" BASE M'BURG WILD ROSE  
TABLE SIZE KEROSENE LAMP - GREEN (VERY  
RARE AND EXTREMELY DESIRABLE - SUPER  
IRID.)
- \_\_\_\_\_ 201. 9 1/2" M'burg Primrose Ruffled Bowl with Crimped  
Edge - Green (super shape with great irid.; very attrac-  
tive)
- \_\_\_\_\_ 202. 9 1/2" M'burg Holly Whirl 6 Ruffled Bowl - Green /  
Mari. (very scarce and desirable radium finish)
- \_\_\_\_\_ 203. 9 1/2" M'burg Whirling Leaves 6 Ruffled Bowl - Green  
(scarce; nice radium finish)
- \_\_\_\_\_ 204. 6" M'burg Blackberry Wreath Sauce with 3 in 1 Edge -  
Green (nice satiny finish)
- \_\_\_\_\_ 205. 8 1/2" M'BURG TROUT AND FLY ICE CREAM  
SHAPED BOWL - GREEN (VERY SCARCE AND  
DESIRABLE; SUPER SATINY FINISH)
- \_\_\_\_\_ 206. 9" M'BURG TROUT AND FLY BOWL WITH 3 IN 1  
EDGE - AMY. (ANOTHER RARE ITEM WITH SUPER  
SATINY IRID.)
- \_\_\_\_\_ 207. 10 1/4" M'burg Peacock at the Urn Large 6 Ruffled  
Bowl - Mari. (has bee, no beading; satiny and very  
attractive)
- \_\_\_\_\_ 208. 9" M'burg Fleur de lei Domed Tri-Cornered Crimped  
Edge Bowl - Mari. (rare; very desirable shape; super  
radium - small chip on one point)
- \_\_\_\_\_ 209. M'burg Peacock Tail Variant 6 Ruffled Compote -  
Green (very scarce - has super radium finish)
- \_\_\_\_\_ 210. CAMBRIDGE INVERTED STRAWBERRY WHIMSEY  
2 HANDLED NAPPY MADE FROM SPOONER -  
GREEN (EXTREMELY RARE ONE-OF-A-KIND  
WHIMSEY; A SUPER ADDITION TO ANY COLLEC-  
TION)
- \_\_\_\_\_ 210A CAMBRIDGE DOUBLE STAR 7 PC. WATER SET -  
GREEN (VERY SCARCE AND DESIRABLE; TOUGH  
TO FIND A COMPLETE SET)
- \_\_\_\_\_ 211. CAMBRIDGE INVERTED FEATHER TABLE SET  
CREAMER ONLY - AMY. (RARE AND DESIRABLE  
PART; SLIGHT ROUGHNESS ON LIP)

#### START OF SECOND SESSION

- \_\_\_\_\_ 177. Imperial Octagon 6 pc. Wine Set - Dk. Mari. (really  
nice dark set - attractive)
- \_\_\_\_\_ 178. Imperial Columbia Domed Flared Flat Plate - Mari.  
(scarce; super irid.)
- \_\_\_\_\_ 179. 9" Imperial Star of David 8 Ruffled Bowl - Green (pret-  
ty attractive example; nice)
- \_\_\_\_\_ 180. IMPERIAL 474 MID-SIZE HANDLED  
WATER PITCHER - PUR. (ABSOLUTELY  
FANTASTIC EXAMPLE; PROBABLY AS  
NICE AS YOU'LL EVER SEE!)
- \_\_\_\_\_ 180A IMPERIAL ROBIN 7 PC. WATER SET - MARI.  
(VERY SCARCE SET WITH NICE DARK COLOR)
- \_\_\_\_\_ 181. IMPERIAL 474 TUMBLER - PUR. (VERY SCARCE  
AND VERY DESIRABLE; REALLY NICE COLOR)
- \_\_\_\_\_ 182. 9" Imperial Grape Low 8 Ruffled Bowl - Pur. (outstand-  
ing irid.; great!)
- \_\_\_\_\_ 183. 8 3/4" Imperial Grape Low 8 Ruffled Bowl - Amber  
(very scarce color with excellent irid.)
- \_\_\_\_\_ 184. 11" Imperial Grape Large 8 Ruffled Master Berry Bowl  
- Pur. (super irid. with reds, blues and gold - really  
nice)
- \_\_\_\_\_ 185. 9 1/4" IMPERIAL OPEN ROSE FLAT PLATE - PUR.  
(RARE AND VERY DESIRABLE; FANTASTIC  
COLOR AND IRID.)
- \_\_\_\_\_ 186. 9" IMPERIAL OPEN ROSE FLAT PLATE - AMBER  
(RARE AND DESIRABLE; NICE COLOR AND IRID.)
- \_\_\_\_\_ 187. 9 1/4" Imperial Grape Flat Plate - Mari. (super, super  
color and irid. - outstanding)



- \_\_\_\_\_ 212. Cambridge Inverted Feather Stemmed Compote or Parfait - Mari. (very scarce; nice color)
- \_\_\_\_\_ 213. 8 1/4" Tall Dugan Twig Swung Bud Vase - Amy. (scarce; nice irid.)
- \_\_\_\_\_ 214. 5" Tall x 6" Diameter Dugan Thin Rib Squatty Flared Vase - P. Opal. (super opal. and super marigold - nice)
- \_\_\_\_\_ **215. DUGAN CHRISTMAS COMPOTE - PUR. (EXTREMELY DESIRABLE EXAMPLE OF THIS RARE ITEM - LOTS OF BLUE HIGHLIGHTS)**
- \_\_\_\_\_ 216. Dugan Holly Whirl Ruffled Handled Sauce - Pur. (nice shape, really nice irid.)
- \_\_\_\_\_ 217. 6 1/2 - 7" Dugan Fishscale Tri-Cornered Crimped Edge Bowl - Pur. (scarce shape; nice goldish / green irid.)
- \_\_\_\_\_ 218. 7" Dugan Lattice and Points Low 8 Ruffled Hat Shape - Pur. (nice irid.)
- \_\_\_\_\_ 219. 9" Dugan Pony 6 Ruffled Bowl - Amy. (very scarce; nice multi-colored irid.)
- \_\_\_\_\_ **220. 8 3/4" DUGAN BORDER PLANTS DOMED BOWL WITH 3 IN 1 CANDY RIBBON EDGE - AMY. (BEAUTIFUL AND EXTREMELY DESIRABLE)**
- \_\_\_\_\_ **221. 6 1/2" DUGAN WISHBONE AND SPADES FLAT PLATE - PUR. (RARE AND VERY DESIRABLE; SUPER, SUPER COLOR AND IRID.)**
- \_\_\_\_\_ **222. 7" DUGAN CHERRIES / JEWELLED HEART EXTERIOR CRIMPED EDGE PLATE - PUR. (ANOTHER SUPER IRIDIZED ITEM - VERY DESIRABLE)**
- \_\_\_\_\_ 223. 9 1/4" Dugan Apple Blossom Twigs Bowl with 3 in 1 Candy Ribbon Edge - Pur. (super color and irid. - a great item)
- \_\_\_\_\_ **224. 10 1/2" DUGAN WISHBONE AND SPADES FLAT CHOP PLATE - PUR. (VERY RARE AND EXTREMELY DESIRABLE; SUPER COLOR AND IRID.)**
- \_\_\_\_\_ **225. DUGAN BUTTERFLY AND TULIP LARGE FTD. SQUARE BOWL WITH INVERTED FAN AND FEATHER EXTERIOR - PUR. (VERY RARE AND VERY DESIRABLE; SUPER IRID. - A TAD SILVERY ON THE CORNERS BUT A WONDERFUL ITEM)**
- \_\_\_\_\_ 226. 11 1/2" x 9" Dugan Butterfly and Tulip Large 2 Sided ftd. Bowl with Inverted Fan and Feather Exterior - Mari. (very scarce; nice average color and irid.)
- \_\_\_\_\_ 227. Dugan Strawberry Single Lily Epergne - Pur. (extremely rare and a beaut; bottom of lily is reglued)
- \_\_\_\_\_ 228. Dugan Grape Delight 6 ftd. Nut Bowl - Pur. (really nice multi-colored irid.)
- \_\_\_\_\_ 229. Dugan Grape Delight 6 ftd. Nut Bowl - Blue (very scarce base glass - nice irid.)
- \_\_\_\_\_ **230. DUGAN GOD AND HOME 7 PC. WATER SET - BLUE (EXTREMELY RARE AND VERY DESIRABLE; NICE SET THAT IS TERRIBLY DIFFICULT TO FIND)**
- \_\_\_\_\_ 231. 7 3/4" Tall Dugan Circle Scroll Whimsey Swung Vase - Pur. (very scarce; nice average color and irid.)
- \_\_\_\_\_ 232. 10 1/2" Tall Dugan Pulled Loop Swung Vase - P. Opal. (super opal.)
- \_\_\_\_\_ 233. Dugan Heavy Iris Tankard Handled Water Pitcher - Mari. (very scarce and desirable item; nice)
- \_\_\_\_\_ 234. Dugan Heavy Iris Tumbler - Mari. (pretty nice color and irid.)
- \_\_\_\_\_ **235. DUGAN QUILL TANKARD HANDLED WATER PITCHER - DK. MARI. (RARE AND VERY DESIRABLE; SUPER COLOR AND IRID.; SMALL OPEN BLISTER)**
- \_\_\_\_\_ **236. DUGAN QUILL TUMBLER - DK. MARI. (RARE AND VERY DESIRABLE; SUPER COLOR)**
- \_\_\_\_\_ **237. DUGAN HERON HANDLED MUG - PUR. (RARE AND DESIRABLE; SUPER IRID. AND DETAIL)**
- \_\_\_\_\_ 238. Dugan Fishermans Handled Mug - Pur. (really nice satiny irid. and details)
- \_\_\_\_\_ **239. DUGAN FISHERMANS HANDLED MUG - DK. MARI. (SUPER DARK COLOR AND IRID.; GREAT DETAIL)**
- \_\_\_\_\_ **240. DUGAN MANY FRUITS ROUND PUNCH BOWL, BASE AND 6 CUPS - PUR. TOP, BLUE BASE (RARE AND DESIRABLE; THIS SET ORIGINALLY CAME THIS WAY; SUPER IRID.)**
- \_\_\_\_\_ 241. Dugan Beaded Shell Handled Mug - Blue (scarce base color; nice)
- \_\_\_\_\_ **242. 11 1/2" DUGAN PERSIAN GARDEN LARGE ICE CREAM BOWL - WHITE (SCARCE - NICE AND FROSTY)**
- \_\_\_\_\_ 243. 5 3/4" Dugan Persian Garden Ind. Ice Cream Bowl - White (super irid.; really nice)
- \_\_\_\_\_ 244. 6 1/2" Dugan Persian Garden Flat Plate - Mari. (pretty nice irid. and detail)
- \_\_\_\_\_ 245. 7" Dugan Persian Garden Flat Plate with Pool of Pearls Exterior - White (super example of this item - nice)
- \_\_\_\_\_ 246. 6 3/4" Dugan Four Flowers Flat Plate - P. Opal. (flat as a pancake; nice irid. and opal. along the edge)
- \_\_\_\_\_ 247. 7 1/2" Dugan Grapevine Lattice Flat Plate - Mari. (nice satiny finish - attractive example)
- \_\_\_\_\_ 248. 7 1/2" Dugan Fishscale and Beads Flat Plate - White (super, super irid.; frosty)
- \_\_\_\_\_ 249. 7" Dugan Fishscale and Beads Flat Plate - Mari. (satiny example - nice)
- \_\_\_\_\_ **250. 8 1/2" DUGAN BROOKLYN BRIDGE 10 RUFFLED BOWL - MARI. (RARE AND DESIRABLE; SORTA RADIUM FINISH)**
- \_\_\_\_\_ **251. DUGAN NAUTILUS NOVELTY OPEN SUGAR, SIGNED IN SCRIPT - DK. P. OPAL. (RARE AND VERY DESIRABLE; SUPER OPAL. AND COLOR - NICE)**
- \_\_\_\_\_ 252. Dugan Nautilus Novelty Creamer, not Signed - P. Opal. (very scarce and desirable; has check in base on mold line)
- \_\_\_\_\_ 253. 9 1/4" Dugan Round Up Low Ruffled Bowl / Plate - Blue (scarce; satiny finish)
- \_\_\_\_\_ 254. 8 3/4" Dugan Round Up Low Ruffled Bowl / Plate - White (scarce; a bit lighter in color)
- \_\_\_\_\_ 255. Dugan Grape Delight 6 ftd. Rose Bowl - Dk. Mari. (really nice example)
- \_\_\_\_\_ 256. Dugan Many Fruits Handled Punch Cup - Amy.
- \_\_\_\_\_ 257. Dugan Many Fruits Handled Punch Cup - Lt. Mari.
- \_\_\_\_\_ 258. Dugan Stork in the Rushes Handled Punch Cup - Mari.
- \_\_\_\_\_ 259. (3) Fenton Handled Punch Cups: Wreath of Roses with Persian Medallion Interior - Green and Mari.; Orange Tree - Mari. (selling choice)
- \_\_\_\_\_ **260. FENTON CHERRIES FTD. OBLONG BANANA BOAT - BLUE (ONLY A FEW OF THESE FENTON RARITIES EXIST; THIS IS THE BEST EXAMPLE WE'VE EVER SEEN - A REAL BEAUTY!)**
- \_\_\_\_\_ **261. FENTON MIKADO LARGE STEMMED RUFFLED COMPOTE - BLUE (RARE AND VERY DESIRABLE; EXCELLENT COLOR AND IRID.)**
- \_\_\_\_\_ 262. Fenton Peacock at the Urn Stemmed Ruffled Compote - Aqua / Mari. (very scarce base color for this item; nice irid.)
- \_\_\_\_\_ 263. Fenton Peacock at the Urn Stemmed Ruffled Compote - Mari.



264. Fenton Bird and Cherries Stemmed Ruffled Compote - Green (nice color and irid.)
265. **9 1/2" FENTON DRAGON AND STRAWBERRY LARGE 8 RUFFLED BOWL - BLUE (RARE AND EXTREMELY DESIRABLE; ONE OF THE BETTER EXAMPLES I'VE SEEN)**
266. 8 1/2" Fenton Dragon and Lotus Bowl with 3 in 1 Edge - Mari. (scarce shape; nice irid.)
267. **7 1/4" FENTON LIONS 6 RUFFLED BOWL - BLUE (RARE COLOR; HAS EXCELLENT COLOR AND DETAIL)**
268. Fenton Lotus and Grape 2 Handled 4 Sided Bon Bon - Green (very scarce color - nice example)
269. Fenton Cherry Circles Large 2 Handled 4 Sided Bon Bon - Blue (scarce; really nice irid.)
270. **9" FENTON HOLLY 8 RUFFLED BOWL - DK. MARI. / MOONSTONE (THIS EXAMPLE IS THE BEST I'VE EVER SEEN - FANTASTIC!)**
- 270A **FENTON HOLLY 6 RUFFLED HAT - RED (GREAT COLOR AND IRID.; VERY DESIRABLE)**
271. 9" Fenton Holly 8 Ruffled Bowl - Green (nice color and irid.)
272. 8 1/4" Fenton Holly Ice Cream Shaped Bowl - Mari. (nice color and irid.)
273. **9 1/2" FENTON HOLLY FLAT PLATE - WHITE / LT. BLUE (HAS A LIGHT BLUE TINT TO THE BASE GLASS; HAVEN'T SEEN MANY LIKE THIS - VERY DIFFERENT)**
274. 7" Fenton Lotus and Thistle Low Ice Cream Shaped Bowl - Mari. (scarce item)
275. **11" TALL FENTON RUSTIC STANDARD SWUNG VASE - P. OPAL. (EXTREMELY RARE AND DESIRABLE; EXCELLENT COLOR AND IRID.; A SUPER EXAMPLE)**
276. 14 1/2" Tall Fenton Rustic Mid-Size Swung Vase - Dk. Mari. (nice color and irid.)
277. 15 1/2" Tall Fenton Rustic Mid-Size Swung Vase - Blue (very large example with great color)
278. 11" Tall Fenton Plume Panels Swung Vase - Green (nice color and irid.)
279. 5 1/2" Fenton Little Fishes ftd. Ruffled Sauce - Mari. (nice detail and color)
280. **9 1/2" FENTON LITTLE FISHES LARGE BALL FTD. FLARED BOWL - BLUE (SCARCE SHAPE; EXCELLENT DETAIL AND IRID.)**
281. 8 3/4" Fenton Little Fishes Large Ball ftd. Ice Cream Shaped Bowl - Mari. (nice color and detail)
282. **9 1/4" FENTON 10 MUMS BOWL WITH 3 IN 1 EDGE - GREEN (VERY SCARCE; EXCELLENT COLOR AND IRID.)**
283. **8 3/4" FENTON 10 MUMS BOWL WITH TIGHT CANDY RIBBON EDGE - BLUE (VERY SCARCE; EXCELLENT COLOR AND IRID.)**
284. Fenton Orange Tree Handled Shaving Mug - Blue (nice color and irid.)
285. **FENTON ORANGE TREE HANDLED LOVING CUP - BLUE (RARE AND DESIRABLE; EXCELLENT IRID.)**
286. **FENTON ORANGE TREE 7 PC. FLARED PUNCH SET - BLUE (SCARCE SHAPE; VERY ATTRACTIVE COMPLETE SET)**
287. **FENTON FLOWERS FTD. ROSE BOWL - AMY. (VERY RARE COLOR FOR THIS ITEM; VERY NICE IRID. AND PRETTY GOOD FEET)**
288. Fenton Orange Tree Standard Handled Mug - Dk. Mari. (nice dark color)
289. Fenton Orange Tree Open Sugar for Breakfast Set - White (very scarce item if ya need it)
290. **9 1/2" FENTON ORANGE TREE WITH TRUNK FLAT PLATE - BLUE (VERY SCARCE AND DESIRABLE; EXCELLENT MULTI-COLORED IRID.)**
291. **9 1/4" FENTON HEART AND VINE FLAT PLATE - BLUE (RARE AND DESIRABLE; ANOTHER ITEM WITH EXCELLENT HIGHLIGHTS)**
292. 7 1/2" Fenton Horsehead Medallion Flat Plate - Mari. (scarce item; nice color and detail)
293. 6 3/4" Fenton Lions Ice Cream Shaped Bowl - Mari. (scarce shape; nice satiny finish)
294. Fenton Horsehead Medallion Rose Bowl - Mari. (nice color; scarce item)
295. **7" FENTON ELKS 1910 DETROIT 6 RUFFLED BOWL - BLUE (RARE AND DESIRABLE; THESE ITEMS ARE GETTING TOUGHER TO FIND; EXCELLENT DETAIL)**
296. 9" Fenton Stag and Holly Large Ball ftd. Deep 8 Ruffled Bowl - Blue (scarce shape; excellent irid.)
297. 8 1/2" Fenton Dragon and Lotus Ice Cream Shaped Bowl - Blue (nice color and irid.)
298. 9" Fenton Holly Bowl with 3 in 1 Edge - Amy. (scarce color; bright irid.)
299. **9 1/4" FENTON HOLLY 8 RUFFLED BOWL - MARI. / VASELINE (RARE BASE GLASS COLOR; EXCELLENT MARIGOLD OVERLAY)**
300. **9 1/4" FENTON CAPTIVE ROSE FLAT PLATE - AMY. (RARE AND DESIRABLE; VERY NICE COLOR, IRID. AND DETAIL)**
301. **9 1/4" FENTON CAPTIVE ROSE PLATE - BLUE (SCARCE ITEM; NICE COLOR AND IRID.)**
302. **9 1/4" FENTON LEAF CHAIN PLATE - BLUE (TOUGH COLOR TO FIND THIS ITEM IN; REALLY NICE IRID.)**
303. 9 1/4" Fenton Leaf Chain Plate - Green (scarce item; nice base color)
304. Fenton Horsehead Medallion ftd. Jack in the Pulpit Bowl - Blue (chip on edge)
305. **FENTON G & C LARGE FTD. RUFFLED FRUIT BOWL WITH PERSIAN MEDALLION INTERIOR - GREEN (EXTREMELY RARE AND VERY DESIRABLE; THIS ITEM WAS SOLD AT KEYSTONE A FEW YEARS AGO)**
306. Fenton G & C ftd. Ruffled Fruit Bowl with Persian Medallion Interior - Amy. (very scarce color for this item; very desirable)
307. Fenton Thistle Oval ftd. Banana Boat - Mari. (scarce; nice dark color and irid.)
308. 10" Fenton Feathered Serpent Large 6 Ruffled Bowl - Amy. (nice irid.)
309. 9 1/2" Fenton Lotus and Poinsettia Ball ftd. Ruffled Bowl - Mari.
310. **9 1/2" FENTON LOTUS AND POINSETTIA BALL FTD. RUFFLED BOWL - MARI. / VASELINE (VERY RARE ITEM TO FIND IN THIS COLOR; NICE ITEM)**
- 310A **FENTON STAG AND HOLY BALL FTD. CHOP PLATE - MARI. (VERY RARE AND DESIRABLE; EXCELLENT DETAIL WITH GREAT IRID.)**
- 310B **FENTON STAG AND HOLLY SPATULA FTD. PLATE - MARI. (VERY RARE AND DESIRABLE; NICE DETAIL AND SATINY IRID.)**
311. 8" Fenton Stag and Holly Spatula ftd. Ice Cream Shaped Bowl - Green (scarce item in a scarce shape)
312. 7 3/4" Fenton Stag and Holly Spatula ftd. 8 Ruffled Bowl - Amy. (scarce color for this item)
313. 10 1/2" Fenton Stag and Holly Large Ball ftd. Ice Cream Shaped Bowl - Mari. (nice color and irid.)
314. 8" Fenton Thistle Ice Cream Shaped Bowl - Amy. (nice satiny finish)
315. **5 3/4" FENTON LOTUS AND POINSETTIA FTD. RUFFLED SAUCE - RED (RARE AND VERY DESIRABLE; REALLY NICE COLOR AND IRID. - A TOUGHIE!)**
316. **FENTON BLACKBERRY SPRAY CRIMPED EDGE JACK IN THE PULPIT HAT - RED (VERY DESIRABLE SHAPE FOR THIS ITEM - ATTRACTIVE)**



317. 6 1/2" FENTON STIPPLED RAYS 6 RUFFLED SAUCE - RED (VERY SCARCE; NICE COLOR; GETTING TOUGH TO FIND)
318. 7 3/4" FENTON ACORN LOW 8 RUFFLED BOWL - RED (RARE AND DESIRABLE; NICE SATINY FINISH)
319. 7 3/4" Fenton Acorn Low 8 Ruffled Bowl - Mari. / Opal. Tips (very scarce and underpriced item; nice irid.)
320. FENTON 2 ROW OPEN EDGE BLACKBERRY 4 SIDED HAT - RED (TOUGH ITEM TO FIND IN THIS SHAPE; NICE COLOR)
321. Fenton 2 Row Open Edge Blackberry Deep 6 Ruffled Hat - Blue (nice irid.)
322. Fenton 2 Row Open Edge Jack in the Pulpit Hat - Blue
323. Fenton 2 Row Open Edge 2 Sided Hat with Miller's Furniture Adv. - Lt. Mari.
324. FENTON 2 ROW OPEN EDGE LARGE SIZE 2 SIDED HAT SHAPE - ICE GREEN (VERY DESIRABLE SHAPE FOR THIS ITEM IN THIS COLOR)
325. FENTON 2 ROW OPEN EDGE LARGE SIZE 6 RUFFLED HAT - CELESTE BLUE (RARE AND DESIRABLE; NICE BASE GLASS COLOR AND IRID.)
326. 6 3/4" FENTON 2 ROW OPEN EDGE LARGE SIZE ICE CREAM SHAPED HAT - CELESTE BLUE (ANOTHER NICE EXAMPLE OF THIS ITEM WITH ATTRACTIVE COLOR AND IRID.)
327. Fenton Interior Panel Large ftd. Fan Vase with Sterling Ship - Mari. (unusual item)
328. Fenton Interior Panel Small ftd. Fan Vase with Sterling Ship - Mari. (another unusual item)
329. Fenton Stream of Hearts Stemmed Ruffled Crimped Edge Compote - Mari. (scarce item)
330. 7 3/4" FENTON G & C BALL FTD. FLARED BOWL - CELESTE BLUE (VERY RARE ITEM TO FIND IN THIS COLOR; PERFECT WITH WONDERFUL COLOR AND IRID.)
331. 6 3/4" FENTON G & C FLARED BOWL - MARI. / MOONSTONE (RARE AND UNDERPRICED - THIS ONE IS AN EXCELLENT EXAMPLE)
332. PAIR FENTON STRETCH CORNUCOPIA CANDLESTICKS - ICE BLUE (RARE PAIR; VERY ATTRACTIVE PASTEL ITEMS)
333. FENTON ROSE SPRAY STEMMED JACK IN THE PULPIT COMPOTE - DK. ICE BLUE (SCARCE AND DESIRABLE ITEM IN THIS COLOR)
334. 8 1/2" Fenton Orange Tree Ice Cream Shaped Bowl - White (nice frosty color and irid.)
335. 8 1/2" FENTON CONCORD GRAPE 6 RUFFLED BOWL - GREEN (ABSOLUTELY FANTASTIC EXAMPLE; WOULD LOOK GREAT IN ANYONE'S COLLECTION)
336. 7 1/2" FENTON VINTAGE GRAPE FLAT PLATE - AMY. (RARE AND VERY DESIRABLE; HAS WONDERFUL RADIUM IRID.)
337. 7 1/2" Fenton Vintage Grape Flat Plate - Blue (very scarce and desirable; nice color and irid.)
338. 7 1/2" Fenton Vintage Grape Flat Plate - Green (another scarce item with nice irid.)
339. 7 1/2" Fenton Vintage Grape Flat Plate - Dk. Mari. (scarce item with strong satiny finish)
340. 9 1/4" FENTON SPECTOR'S DEPT. STORE PLATE - DK. MARI. (VERY SCARCE AND VERY DESIRABLE; THIS IS ONE OF THE BETTER EXAMPLES WE'VE SOLD LATELY)
341. 9 1/4" FENTON PEACOCK AT THE URN PLATE - DK. MARI. (ABSOLUTELY OUTSTANDING IRID.; THERE AREN'T TOO MANY BETTER EXAMPLES)
342. 7 3/4" Fenton Peacock at the Urn Ice Cream Shaped Bowl - Dk. Mari. (scarce shape - great color)
343. 8 3/4" FENTON PEACOCK AT THE URN 8 RUFFLED BOWL - GREEN (RARE BASE GLASS COLOR FOR THIS ITEM)
344. 6" FENTON "SEASONS GREETINGS - EAT PARADISE SODAS" PLATE - AMY. (RARE AND DESIRABLE; NICE SATINY FINISH; GETTING TOUGH)
345. 9 1/4" FENTON PEACOCK AND GRAPE PLATE - MARI. (ABSOLUTELY WONDERFUL EXAMPLE WITH BRIGHT MULTI-COLORED IRID.; A SUPER ITEM)
346. 9" FENTON PEACOCK AND GRAPE 8 RUFFLED BOWL - LIME GREEN OPAL. (RARE AND DESIRABLE PASTEL ITEM; OPAL. ON EDGE; HAVEN'T SOLD MANY OF THESE LATELY)
347. 9 1/2" Fenton Three Fruits 12 Sided Plate - Dk. Mari. (nice satiny example with little or no wear)
348. 9" Fenton Leaf Chain 6 Ruffled Bowl - Mari. (nice color)
349. 6" Fenton Pine Cone Plate with Plain Exterior - Blue (scarce; nice color and detail)
350. FENTON VINTAGE GRAPE LARGE SIZE SINGLE LILY EPERGNE - AMY. (SCARCE; DESIRABLE; TOUGH ITEM TO FIND IN THIS COLOR)
351. Fenton Vintage Grape Small Size Single Lily Epergne - Amy. (very scarce and desirable; nice satiny finish)
352. Fenton Vintage Grape Small Size Single Lily Epergne - Blue (another nice example with nice color and irid.)
353. Fenton Vintage Grape Small Size Single Lily Epergne - Green (scarce color; nice detail and finish)
354. Fenton Vintage Grape Small Size Single Lily Epergne - Dk. Mari. (actually quite a tough item to find)
355. FENTON ORANGE TREE FTD. HATPIN HOLDER - BLUE (RARE AND DESIRABLE WITH NICE COLOR AND IRID. AND PRETTY GOOD FEET)
356. Fenton Orange Tree ftd. Hatpin Holder - Dk. Mari. (excellent color and irid. with perfect feet)
357. Fenton Blackberry Miniature Compote - Green (very scarce color for this item; nice)
358. Fenton Blackberry Miniature Compote - Blue (nice color and irid.)
359. Fenton Lattice and Grape 7 pc. Tankard Water Set - Mari. (nice complete set)
360. FENTON PERSIAN MEDALLION 2 HANDLED 4 SIDED BON BON - AQUA / MARI. (RARE BASE GLASS COLOR FOR THIS ITEM)
361. Fenton Birds and Cherries 2 Handled 4 Sided Bon Bon - Amy. (scarce; nice color and detail)
362. Fenton Birds and Cherries 2 Handled 4 Sided Bon Bon - Mari. (nice dark color)
363. Fenton Wreath of Roses Pedestaled 4 Sided Bon Bon - Green (nice satiny finish)
364. Fenton Persian Medallion 2 Handled 4 Sided Bon Bon - Mari. (nice color)
365. Fenton Pond Lily 2 Handled 4 Sided Bon Bon - White (very scarce; frosty with nice irid.)
366. Fenton Butterflies 2 Handled 2 Sided Card Tray - Green (nice color and irid.)
367. Fenton Butterflies 2 Handled 2 Sided Card Tray - Mari.
368. Fenton Apple Tree Bulbous Handled Water Pitcher - Lt. Mari.
369. Fenton Enamelled Cherries Bulbous Handled Water Pitcher - Blue (nice decoration and irid.)
370. Fenton Ten Mums Tumbler - Blue (scarce; nice color)
371. Fenton Garland ftd. Rose Bowl - Blue (nice irid.)
372. Fenton Persian Medallion Hair Receiver - Dk. Mari. (a beauty)
373. Fenton Cherry Circles Large Round 2 Handled Bon Bon - Mari. (nice irid.)
374. Fenton Holly Jack in the Pulpit Crimped Edge Hat - Blue (great shape)
375. 5" Fenton Feathered Serpent 6 Ruffled Sauce - Amy.



