

# BURNS

AUCTION SERVICE

## Keystone Carnival Glass Club Convention Auction

Friday & Saturday,  
May 22 & 23, 1998

Friday: Auction - 7:00 pm,  
preview - 4:00 pm (lots 1 - 95)

Saturday: Auction - 9:00 am,  
preview - 8:00 am (Lots 96 - end)

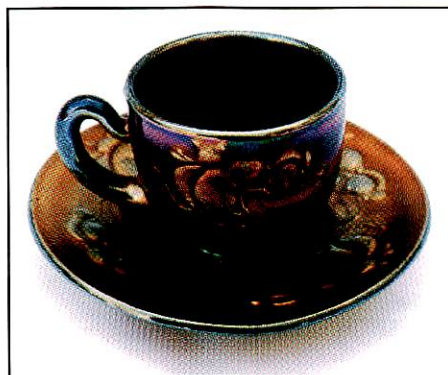
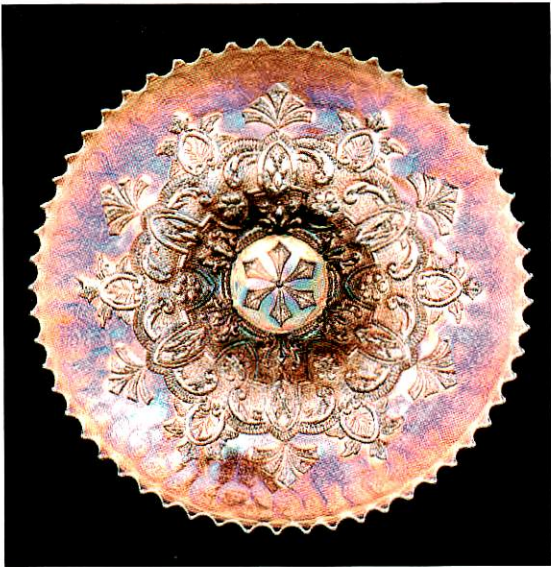
*at the*

**Monroeville Holiday Inn**  
2750 Mosside Blvd.

*(just off Exit 6 of the PA Turnpike)*

**Monroeville, PA 15146**

**(412) 372-1022**



We are starting our busy time of the year with this particular convention auction (we keep going and going and going...). This year's Keystone Convention Auction will consist of glass from the Mary Sharp collection. There will be over 200 lots with all types of items including a little something for everybody. Hope you can make it - as usual it will be an entertaining and enjoyable experience.

The Monroeville Holiday Inn will host the event. The club decided to have a new location to sorta get the blood moving again, so they've gone to the Pittsburgh area. You can call the motel direct at (412) 372-1022 for reservations or call Nancy Williams at (610) 374-9033.

Mail, Email and Phone Bids are due by Thursday, May 21, 1998, so don't delay...

**Special Note:** As soon as this Convention is over, Tom will start off on the road for about a month. First to Florida, then to Lincoln Land (Milwaukee), then to Arizona, then to Modesto, CA for the NCCC Convention, then back to Kansas for the ICGA. So... Mail Bidders must BE PATIENT!

## Burns Auction Service

Tom Burns  
P.O. Box 608  
Bath, New York 14810  
(607) 776-7942

Bill Richards  
44 Water St., Poland, OH 44514  
(330) 757-2001  
FAX (330) 757-4917

Bill Richards, III  
2253 Country Lane  
Poland, OH 44514  
(330) 755-2620

Maid Bids honored under the following conditions:

1. No deposit required. Bidders will take full responsibility to honor any and all bids we execute for them. Payment in full plus postage and handling required after notification and before we ship any item to them.
2. Items are bid on in perfect condition with average or above average iridescence OR as listed in the brochures. Bids will not be carried out when damage on an item has been found during the auction. **PEOPLE PRESENT AT AUCTION ARE RESPONSIBLE FOR FINDING ANY PINHEADS, WEAR, SPOTTINESS, MANUFACTURER'S DEFECTS OR ANY OTHER MINOR FLAWS, ETC.**
3. Successful bidders will be notified by collect call from the auctioneer (**so be sure to include phone number**).
4. Phone inquiries about the glass or any other questions are welcome.
5. If you have some other person at the auction bidding for you, they must pay for the item before taking it.
6. Any terms or conditions given the day of the auction will supersede any previously published information.
7. Mail, Email, FAX and Phone bids due by Thursday, May 21, 1998.

- |  |  |
|--|--|
| <p>___ 1. Golden Wedding Pint Bottle with Label and Tin Shot Cap - Mari.</p> <p>___ 2. Golden Wedding 1/2 Pint Bottle with Label and Tin Lid - Mari.</p> <p>___ 3. Golden Wedding Sample (or 'Nip') Bottle - Mari.</p> <p>___ 4. Golden Wedding Shot Glass - Clear (not iridized; pretty unusual item)</p> <p>___ 5. <b>FENTON KITTENS CUP AND SAUCER - BLUE (EXTREMELY RARE ITEM; A SET VERY SELDOM SOLD; SUPER COLOR AND IRID.)</b></p> <p>___ 6. <b>FENTON KITTENS 6 RUFFLED BOWL - BLUE (RARE AND DESIRABLE; SATINY FINISH)</b></p> <p>___ 7. <b>FENTON KITTENS 4 SIDED BOWL - BLUE (RARE AND DESIRABLE; NICE COLOR AND IRID.)</b></p> <p>___ 8. Fenton Kittens Ruffled Toothpick Holder - Blue (scarce and very desirable; has a small base flake)</p> <p>___ 9. Fenton Horsehead Medallion Jack in the Pulpit ftd. Bowl - Mari.</p> <p>___ 10. <b>FENTON PANTHER LARGE BALL FTD. ICE CREAM SHAPED CENTERPIECE BOWL - DK. MARI. (RARE AND DESIRABLE; NICE GOLD / REDDISH IRID.)</b></p> <p>___ 11. Fenton Panther Large Ball ftd. Ruffled Master Berry Bowl - Olive Green (rare color for this size bowl; some roughness on edge)</p> <p>___ 12. Fenton Panther Large Ball ftd. Ruffled Master Berry Bowl - Blue (very scarce item; nice; has open bubble on foot)</p> <p>___ 13. <b>8 1/2 - 9" FENTON PEACOCK AT THE URN BOWL WITH 3 IN 1 EDGE - AMY. (VERY SCARCE SHAPE IN A SCARCE COLOR)</b></p> <p>___ 14. 8 1/2 - 9" Fenton Peacock at the Urn Bowl with 3 in 1 Edge - Mari. (scarce shape; really nice color and irid.)</p> <p>___ 15. <b>7" FENTON ACORNS DEEP ICE CREAM SHAPED BOWL - RED (VERY SCARCE; HAS NICE MULTI-COLORED IRID.; ONE SHARP POINT)</b></p> | <p>___ 16. Fenton Lotus and Grape 2 Handled Bon Bon - Red Slag (rare, desirable; sorta Mandarin red effect; has some roughness)</p> <p>___ 17. <b>FENTON ORANGE TREE STANDARD HANDLED MUG - RED (VERY SCARCE; FAIR DETAIL - GREAT IRID.)</b></p> <p>___ 18. <b>FENTON 2 ROW OPEN EDGE 4 SIDED HAT - RED (SCARCE SHAPE; NICE COLOR WITH SATINY IRID.)</b></p> <p>___ 19. <b>FENTON 2 ROW OPEN EDGE 6 RUFFLED HAT - RED (REALLY NICE COLOR; SATINY FINISH)</b></p> <p>___ 20. <b>9" FENTON PEACOCK AND GRAPE FLAT PLATE WITH BERRY EXTERIOR - MARI. (ABSOLUTELY SUPER BRIGHT IRID.; HAS TINY FLAKE ON BASE)</b></p> <p>___ 21. <b>FENTON 2 ROW OPEN EDGE JACK IN THE PULPIT HAT - AQUA (RARE AND DESIRABLE SHAPE; GREAT COLOR)</b></p> <p>___ 22. Fenton 2 Row Open Edge Jack in the Pulpit Hat - Green (rare and desirable; tough shape for this color)</p> <p>___ 23. Fenton 2 Row Open Edge Jack in the Pulpit Hat - Blue (nice example)</p> <p>___ 24. Fenton 2 Row Open Edge 2 Sided Hat - Dk. Mari. (nice dark color)</p> <p>___ 25. <b>12" TALL FENTON FINE RIB SWUNG VASE - LT. AMY. OPAL. (RARE COLOR; OPAL. ON POINTS - REALLY TOUGH)</b></p> <p>___ 26. 10" Tall Fenton Fine Rib Swung Vase - Teal (rare tint - nice color; attractive)</p> <p>___ 27. 11" Tall Fenton Fine Rib Swung Vase - Odd Green (very scarce color; nice irid.)</p> <p>___ 28. 12" Tall Fenton Fine Rib Swung Vase - Mari. / Vaseline (scarce; nice base color)</p> <p>___ 29. Fenton Peacock at the Urn Round Flared Stemmed Compote - Mari.</p> <p>___ 30. <b>12" TALL FENTON APRIL SHOWERS SWUNG VASE - MARI. / VASELINE (VERY RARE AND DESIRABLE; DON'T REMEMBER SEEING TOO MANY AROUND)</b></p> |
|--|--|

- \_\_\_\_ 31. 10" Tall Fenton Rustic Flared Swung Vase - White (scarce; nice and frosty irid.)
- \_\_\_\_ 32. Fenton Rustic Variant Flared Swung Vase - Amy. (odd size and nice satiny finish)
- \_\_\_\_ 33. (2) 11" Tall Fenton Diamond Rib Swung Vases - Green (satiny; nice pair; selling so much each for pair)
- \_\_\_\_ 34. (2) Fenton (?) Panelled Shades - Mari. / Moonstone (great color and irid.; selling so much each for pair)
- \_\_\_\_ 35. Fenton Orange Tree 8 pc. Ruffled Punch Set - White (very rare set; nice color; base and 2 cups are 'as is')
- \_\_\_\_ 36. Fenton Orange Tree ftd. Hatpin Holder - Blue (very desirable with super irid.; small flake on one foot)
- \_\_\_\_ 37. Fenton Butterfly and Berry ftd. Creamer - Mari. (tough part)
- \_\_\_\_ 38. Fenton Butterfly and Berry ftd. Spooner - Dk. Mari. (nice color; satiny irid.)
- \_\_\_\_ 39. Fenton Magnolia and Drape 5 pc. Bulbous Water Set - Mari. (nice set with well done decoration)
- \_\_\_\_ 40. **FENTON STRETCH CORNUCOPIA 3 PC. CONSOLE SET - ICE BLUE (HAS CENTERPIECE AND PAIR OF STICKS; NICE COLOR; ONE STICK IS CHIPPED)**
- \_\_\_\_ 41. **7" FENTON STRETCH STIPPLED RAYS ICE CREAM SHAPED STEMMED COMPOTE - ICE GREEN (VERY SCARCE ITEM; NICE STRETCH EFFECT)**
- \_\_\_\_ 42. 9" Fenton Persian Medallion Deep Round Flared Bowl - Blue (super color; probably a master berry bowl)
- \_\_\_\_ 43. Fenton Persian Medallion Handled Bon Bon - Blue (nice satiny example)
- \_\_\_\_ 44. Fenton Persian Medallion Handled Bon Bon - Dk. Mari. (nice color)
- \_\_\_\_ 45. **FENTON RUFFLED RIB SPITTOON WITH 2 SIDES UP - DK. MARI. (REALLY DIFFERENT - NICE COLOR AND A GREAT SHAPE)**
- \_\_\_\_ 46. Fenton Holly Stemmed Ruffled Compote - Lt. Cobalt Blue (nice color)
- \_\_\_\_ 47. Fenton Holly Goblet Shaped Stemmed Compote - Blue (nice color)
- \_\_\_\_ 48. 5" Fenton Little Flowers Ice Cream Shaped Sauce - Powder Blue / Mari. (very scarce base color - unusual)
- \_\_\_\_ 49. (2) Fenton Wreath of Roses Handled Punch Cups with Vintage Interior - Blue (nice; selling choice)
- \_\_\_\_ 50. **9 1/2" FENTON TEN MUMS FTD. BOWL WITH 3 IN 1 EDGE - GREEN (VERY RARE ITEM IN THIS COLOR; REALLY NICE EXAMPLE)**
- \_\_\_\_ 51. **9 1/2" FENTON TEN MUMS FTD. BOWL WITH 3 IN 1 EDGE - DK. MARI. (ANOTHER RARE ITEM WITH NICE COLOR AND IRID.)**
- \_\_\_\_ 52. 9" Fenton Thistle Ruffled Bowl with Horlacher Advertising on Collar Base - Green (very scarce; has small chip on one point)
- \_\_\_\_ 53. 10" Fenton Lotus and Poinsettia Ice Cream Shaped Ball ftd. Bowl - Green (rare item in a desirable color)
- \_\_\_\_ 54. 9 1/2" Fenton Two Flowers 8 Ruffled Ball ftd. Bowl - Blue (super color and irid.; nice)
- \_\_\_\_ 55. **9" FENTON STAG AND HOLLY DEEP RUFFLED BALL FTD. BOWL - GREEN (RARE ITEM IN A RARE COLOR; TOUGH ITEM)**
- \_\_\_\_ 56. 10" Fenton Stag and Holly 8 Ruffled Ball ftd. Bowl - Blue (nice tint; has small chip on one point)
- \_\_\_\_ 57. 9" Fenton Stag and Holly Deep Ruffled Ball ftd. Bowl - Dk. Mari. (great color and detail; nice)
- \_\_\_\_ 58. 8" Fenton Stag and Holly Spatula ftd. Ruffled Bowl - Mari. (nice dark color)
- \_\_\_\_ 59. Imperial Grape Tumbler - Dk. Mari. (nice color and irid.)
- \_\_\_\_ 60. **IMPERIAL HOMESTEAD CHOP PLATE - GREEN (VERY RARE AND DESIRABLE; NICE STRETCH EFFECT; NOT SIGNED)**
- \_\_\_\_ 61. 4" x 4" Imperial 474 Stemmed Sherbet - Mari. (scarce shape)
- \_\_\_\_ 62. Imperial Octagon Stemmed Sherbet - Mari. (scarce)
- \_\_\_\_ 63. Imperial Grape Master Berry Bowl - Smoke (super irid. - nice color)
- \_\_\_\_ 64. Imperial Star Medallion Handled Milk Pitcher - Smoke (scarce; nice color and irid.)
- \_\_\_\_ 65. **IMPERIAL CORN BOTTLE - SMOKE (RARE AND VERY DESIRABLE; NICE IRID.)**
- \_\_\_\_ 66. **IMPERIAL POINSETTIA HANDLED MILK PITCHER - SMOKE (RARE AND VERY DESIRABLE; HAS WONDERFUL BLUE HIGHLIGHTS)**
- \_\_\_\_ 67. Imperial Poinsettia Handled Milk Pitcher - Dk. Mari. (super color and irid.)
- \_\_\_\_ 68. 8 1/2" Imperial Pansy Ruffled Bowl - Pur. (great color and irid.)
- \_\_\_\_ 69. Imperial Floral and Optic ftd. Flared Bowl - Red (great color; small flake on rim)
- \_\_\_\_ 70. **CAMBRIDGE INVERTED STRAWBERRY SPITTOON - GREEN (VERY RARE, VERY DESIRABLE; NICE DETAIL AND GREAT COLOR)**
- \_\_\_\_ 71. **CAMBRIDGE INVERTED STRAWBERRY SPITTOON - DK. MARI. (ANOTHER RARE ITEM WITH NICE COLOR AND IRID.)**
- \_\_\_\_ 72. Pair Cambridge Inverted Strawberry Candlesticks - Green (rare pair but both as is - one has flake, the other is very rough)
- \_\_\_\_ 73. 7 - 7 1/2" M'burg Blackberry Wreath Ice Cream Shaped Bowl - Green (satiny finish)
- \_\_\_\_ 74. M'burg Strawberry Wreath Stemmed Ruffled Compote - Mari. (radius and rare; has flake on edge)
- \_\_\_\_ 75. **M'BURG TROUT AND FLY DIAMOND SHAPED SQUARE BOWL - MARI. (RARE; SATINY WITH FISH IN THE CORRECT PLACE)**
- \_\_\_\_ 76. **M'BURG ISAAC BENESCH ADVERTISING RUFFLED BOWL - AMY. (VERY SCARCE AND DESIRABLE; NICE IRID.)**
- \_\_\_\_ 77. M'burg Holly Sprig Handled Bon Bon with Benesch 54th Anniversary Ad - Mari. (satiny - nice color and irid.)
- \_\_\_\_ 78. 6" M'burg Peacock at the Urn "Proof" Deep Flared Sauce - Amy. (very desirable; nice flare and irid.)
- \_\_\_\_ 79. M'burg Hanging Cherries Covered Butter Dish - Green (rare and a tough item to find)
- \_\_\_\_ 80. **N WISHBONE BULBOUS HANDLED WATER PITCHER - GREEN (RARE AND VERY DESIRABLE; BRIGHT COLOR AND IRID.)**
- \_\_\_\_ 81. N Wishbone Chop Plate with Basketweave Exterior - Pur. (rare item; has chip on one point)
- \_\_\_\_ 82. N Wishbone 8 Ruffled Bowl with Basketweave Exterior - Green (desirable item with nice irid.; flake on base)
- \_\_\_\_ 83. 11" N Thin Rib Standard Swung Vase - Ice Blue (nice color and irid.; scarce)
- \_\_\_\_ 84. 12" N Thin Rib Standard Swung Vase - Green (nice color and bluish irid.)
- \_\_\_\_ 85. **N GREEK KEY 7 PC. TANKARD BULBOUS WATER SET - PUR. (RARE AND DESIRABLE; SUPER SET WITH NICE IRID.)**
- \_\_\_\_ 86. **N GREEK KEY TANKARD BULBOUS WATER SET - DK. MARI. (MINOR PEELING ON LIP OF THIS GREAT COLORED EXAMPLE)**
- \_\_\_\_ 87. N Greek Key Tumbler - Dk. Mari. (very scarce; really nice color and irid.)
- \_\_\_\_ 88. **N GREEK KEY PLATE WITH RIBBED EXTERIOR - MARI. (VERY RARE ITEM; HAS NON-IRIDIZED NARROW BASE; ONE POINT HAS SMALL CHIPS WITH EPOXY)**
- \_\_\_\_ 89. N Poppy Ruffled Relish Tray - Mari. (nice color and irid.)
- \_\_\_\_ 90. **N PEACOCK AT THE FOUNTAIN 8 PC. PUNCH SET - MARI. (VERY DESIRABLE SET - SUPER COLOR AND IRID.; REALLY NICE)**
- \_\_\_\_ 91. N Peacock at the Fountain Covered Butter Dish - Pur. (very scarce; has silvery irid.)
- \_\_\_\_ 92. N Peacock at the Fountain Handled Punch Cup - Blue (silvery but scarce)
- \_\_\_\_ 93. N Beaded Cable ftd. Ruffled Rose Bowl with Ribbed Interior - Amy. (scarce)
- \_\_\_\_ 94. N Beaded Cable ftd. Ruffled Rose Bowl with Ribbed Interior - Mari. (a bit tougher to find in this color)

- \_\_\_\_ 95. **6" N FERN BRAND ADVERTISING HANDGRIP PLATE WITH BASKETWEAVE EXTERIOR - AMY. (VERY SCARCE AND VERY DESIRABLE; NICE BRIGHT HIGHLIGHTS)**

**START OF SECOND SESSION**

- \_\_\_\_ 96. 7" N Drapery Vase - Lime Ice Green (rare tint for this pattern; pinheads on one foot)
- \_\_\_\_ 97. 7" N Drapery Vase - White (scarce; nice irid.; small flake on one toe)
- \_\_\_\_ 98. **N HEART AND FLOWERS STEMMED RUFFLED COMPOTE WITH RIBBED EXTERIOR - MARI. (SCARCE; REALLY NICE EXAMPLE)**
- \_\_\_\_ 99. N Heart and Flowers Stemmed Ruffled Compote with Ribbed Exterior - White (scarce; nice frosty irid.)
- \_\_\_\_ 100. **N POPPY SHOW RUFFLED BOWL - ELEC. BLUE (A REAL BEAUTY; PERFECT WITH BRIGHT BLUE HIGHLIGHTS)**
- \_\_\_\_ 101. **N ROSE SHOW VARIANT RUFFLED BOWL WITH RIBBED EXTERIOR - RENNINGER BLUE (RARE AND DESIRABLE; NICE MULTI-COLORED IRID.)**
- \_\_\_\_ 102. **N ROSE SHOW RUFFLED BOWL - ICE BLUE OPAL. (RARE; DESIRABLE; HAS LIGHT IRID.)**
- \_\_\_\_ 103. **N ROSE SHOW RUFFLED BOWL - PUR. (VERY SCARCE AND DESIRABLE; REALLY ATTRACTIVE ITEM)**
- \_\_\_\_ 104. **N ROSE SHOW RUFFLED BOWL - DK. MARI. (SUPER EXAMPLE - ONE OF THE BETTER ONES I'VE SEEN)**
- \_\_\_\_ 105. **N ROSE SHOW FLAT PLATE - ELEC. BLUE (RARE AND VERY DESIRABLE; NICE EVEN BLUE HIGHLIGHTS)**
- \_\_\_\_ 106. **N ROSE SHOW FLAT PLATE - LAVENDER OR LT. AMY. (VERY SCARCE AND DESIRABLE; AN ODD TINT WITH NICE IRID.)**
- \_\_\_\_ 107. **9" N NIPPON PLATE WITH BASKETWEAVE EXTERIOR - GREEN (RARE AND VERY DESIRABLE; HAS NICE BRIGHT IRID.)**
- \_\_\_\_ 108. **N NIPPON BOWL WITH PIE CRUST EDGE AND BASKETWEAVE EXTERIOR - ICE BLUE (VERY SCARCE; NICE IRID.)**
- \_\_\_\_ 109. N Nippon Ruffled Bowl with Ribbed Exterior - Ice Blue (very scarce; nice irid.; has an open bubble)
- \_\_\_\_ 110. **N ROUND BUSHEL BASKET - ICE BLUE (VERY RARE TO FIND THIS COLOR IN THIS SHAPE; A BIT SILVERY)**
- \_\_\_\_ 111. N Eight Sided Bushel Basket - Pastel Mari. (nice irid.; has a sorta honey amber look)
- \_\_\_\_ 112. **10" N WILD STRAWBERRY LARGE RUFFLED BOWL WITH PLAIN EXTERIOR - PUR. (HAS OUTSTANDING IRID. WITH BLUE HIGHLIGHTS - SUPER EXAMPLE)**
- \_\_\_\_ 113. **7" N WILD STRAWBERRY HANDGRIP PLATE WITH BASKETWEAVE EXTERIOR - PUR. (VERY ATTRACTIVE ITEM; NICE BRIGHT IRID.)**
- \_\_\_\_ 114. 7" N Wild Strawberry Handgrip Plate with Basketweave Exterior - Green (very scarce and desirable; satiny finish)
- \_\_\_\_ 115. **10" N PEACOCK AT THE URN LARGE ICE CREAM BOWL - DK. MARI. (THIS IS ONE PRETTY BOWL - CAN'T BE DISAPPOINTED WITH THIS EXAMPLE)**
- \_\_\_\_ 116. 6" N Peacock at the Urn Ind. Ice Cream Bowl - Mari. (scarce; nice color)
- \_\_\_\_ 117. **N PEACOCKS RUFFLED BOWL WITH RIBBED EXTERIOR - LT. MARI. (NICE COLOR AND IRID.; SORTA PASTEL FINISH)**
- \_\_\_\_ 118. N Fine Cut and Roses ftd. Rose Bowl - Green (scarce; good feet)
- \_\_\_\_ 119. N Fine Cut and Roses ftd. Rose Bowl - Pur. (outstanding color and irid.; nice item)
- \_\_\_\_ 120. **N SINGING BIRDS 7 PC. WATER SET - PUR. (RARE SET - VERY DESIRABLE WITH NICE DETAIL AND IRID.)**

- \_\_\_\_ 121. **N SINGING BIRDS COVERED BUTTER DISH - DK. MARI. (VERY DARK AND VERY ATTRACTIVE; SUPER)**
- \_\_\_\_ 122. N Singing Birds Handled Mug - Ice Blue (very rare but badly cracked)
- \_\_\_\_ 123. N Singing Birds Handled Mug - Pur. (quite a nice example, from the Presnick collection)
- \_\_\_\_ 124. N Singing Birds Handled Mug - Mari. (very nice example)
- \_\_\_\_ 125. **N G & C FTD. PLATE WITH MEANDER EXTERIOR - ICE GREEN (RARE AND VERY DESIRABLE; BEAUTIFUL IRID. AND COLOR)**
- \_\_\_\_ 126. N G & C ftd. Plate with Meander Exterior - Pastel Mari. (very scarce with outstanding irid.)
- \_\_\_\_ 127. **N G & C FTD. HATPIN HOLDER - GREEN (RARE AND DESIRABLE; NICE COLOR AND IRID.)**
- \_\_\_\_ 128. **N G & C FTD. HATPIN HOLDER - PUR. (SUPER EXAMPLE WITH REALLY NICE IRID.; BRIGHT)**
- \_\_\_\_ 129. N G & C ftd. Hatpin Holder - Dk. Mari. (scarce; nice color and irid.)
- \_\_\_\_ 130. **11" N G & C 8 RUFFLED BOWL WITH BASKETWEAVE EXTERIOR - BLUE / ELEC. BLUE (RARE AND DESIRABLE ITEM; NICE COLOR AND IRID.)**
- \_\_\_\_ 131. **N G & C TUMBLER - ICE GREEN (VERY RARE AND DESIRABLE; SORTA LIME ICE GREEN - HAS SOME PEELING ON BASE)**
- \_\_\_\_ 132. N G & C Tumbler - Green (great blue highlights - nice)
- \_\_\_\_ 133. N G & C Cologne Bottle and Stopper - Lt. Mari. (attractive with Pastel irid.; very nice)
- \_\_\_\_ 134. N G & C Powder Jar Base only - Ice Blue (nice - who has the lid?)
- \_\_\_\_ 135. **N G & C COVERED COMPOTE - PUR. (VERY SCARCE; THESE ARE STARTING TO GET TOUGH TO FIND AGAIN)**
- \_\_\_\_ 136. **N G & C LARGE FTD. RUFFLED FRUIT BOWL - PUR. (VERY SCARCE; ATTRACTIVE MASSIVE ITEM - NICE)**
- \_\_\_\_ 137. **N G & C LARGE FTD. RUFFLED FRUIT BOWL - DK. MARI. (ACTUALLY QUITE RARE IN THIS COLOR - A VERY NICE EXAMPLE)**
- \_\_\_\_ 138. **N G & C SMALL FTD. RUFFLED FRUIT BOWL - OLIVE GREEN (VERY RARE TINT - HAVEN'T SEEN TOO MANY LIKE IT)**
- \_\_\_\_ 139. N G & C Small ftd. Ruffled Fruit Bowl with Straight Up Points - Dk. Mari. (attractive; really nice color and irid.)
- \_\_\_\_ 140. **N G & C COVERED BUTTER DISH - GREEN (RARE; DESIRABLE; NICE COLOR AND IRID.)**
- \_\_\_\_ 141. N G & C Handled Creamer - Green (very scarce; nice color and irid.)
- \_\_\_\_ 142. N G & C Spooner - Green (another nice example; scarce)
- \_\_\_\_ 143. N G & C Covered Butter Dish - Pur. (scarce; has very nice color and irid.)
- \_\_\_\_ 144. N G & C Covered Sugar Bowl - Pur. (very scarce; nice color and irid.)
- \_\_\_\_ 145. N G & C Handled Creamer - Pur. (nice color and irid.)
- \_\_\_\_ 146. N G & C Spooner - Pur. (nice color and irid.)
- \_\_\_\_ 147. **10" TALL N DIAMOND POINT SWUNG VASE - ICE BLUE (RARE AND VERY DESIRABLE; NICE COLOR AND IRID.)**
- \_\_\_\_ 148. 9" Tall N Diamond Point Swung Vase with Square Top - Mari. (unusual shape; nice satin finish)
- \_\_\_\_ 149. **11" TALL N LEAF COLUMNS SWUNG VASE - ICE BLUE (RARE AND DESIRABLE; HAS SLIGHT BASE ROUGHNESS)**
- \_\_\_\_ 150. **N LEAF AND BEADS FTD. ROSE BOWL - GREEN (THIS ONE IS A BETTER QUALITY EXAMPLE; REALLY NICE COLOR)**
- \_\_\_\_ 151. **11" TALL N TREE TRUNK STANDARD SWUNG VASE - ICE GREEN (RARE AND DESIRABLE; REALLY NICE ITEM)**
- \_\_\_\_ 152. 10" Tall N Tree Trunk Standard Swung Vase - White (nice and frosty; very scarce and desirable)

- \_\_\_\_\_ 153. 10" Tall N Tree Trunk Standard Swung Vase - Pur. (super color and irid.; nice example)
- \_\_\_\_\_ 154. 13" Tall N Tree Trunk Mid Size Swung Vase - Pur. (very scarce; has nice satiny finish)
- \_\_\_\_\_ 155. **9" N STRAWBERRY PLATE WITH BASKETWEAVE EXTERIOR - LAVENDER (LT. AMY.) (ODD, UNUSUAL TINT; HAVEN'T SEEN MANY LIKE IT)**
- \_\_\_\_\_ 156. N Strawberry Plate with Basketweave Exterior - Mari. (nice color and irid.; dark and attractive)
- \_\_\_\_\_ 157. N Strawberry Bowl with Pie Crust Edge and Basketweave Exterior - Green (nice color and satiny finish)
- \_\_\_\_\_ 158. N Good Luck Bowl with Pie Crust Edge - Pur. (very scarce; has nice satiny finish)
- \_\_\_\_\_ 159. 12" Tall Pillar Ribbed Swung Vase with Howard Furniture Ad. - Green (radium looking - nice)
- \_\_\_\_\_ 160. **N THREE FRUITS MEDALLION FTD. RUFFLED BOWL WITH MEANDER EXTERIOR - AQUA OPAL. (RARE AND DESIRABLE; NICE PASTEL FINISH)**
- \_\_\_\_\_ 161. 7" N Fruit and Flowers Plate with Basketweave Exterior - Pur. (has one pulled point but also has outstanding irid.)
- \_\_\_\_\_ 162. 9" N Three Fruits Plate with Basketweave Exterior - Pur. (scarce; nice multi-colored irid.)
- \_\_\_\_\_ 163. 9" N Three Fruits Bowl with Pie Crust Edge and Basketweave Exterior - Green (scarce; nice satiny finish)
- \_\_\_\_\_ 164. N Three Fruits Domed Ruffled Bowl with Basketweave Exterior - Pastel Mari. (really nice irid.)
- \_\_\_\_\_ 165. N Fruit and Flowers Stemmed Handled Bon Bon with Basketweave Exterior - Pur. (nice color and irid.)
- \_\_\_\_\_ 166. **N ORIENTAL POPPY TUMBLER - ICE BLUE (RARE AND DESIRABLE; NICE COLOR AND IRID.)**
- \_\_\_\_\_ 167. N Raspberry Tumbler - Pur. (super color and irid.)
- \_\_\_\_\_ 168. N Daisy and Plume ftd. Rose Bowl with Berry Interior - Blue (rare but has chip on one foot)
- \_\_\_\_\_ 169. N Sunflower Low ftd. Ruffled Bowl with Meander Exterior - Mari. (satiny)
- \_\_\_\_\_ 170. 9" N Rainbow Interior Plate with Basketweave Exterior - Pur. (plain interior with nice irid.)
- \_\_\_\_\_ 171. N Petals Stemmed Ruffled Compote - Dk. Mari. (scarce)
- \_\_\_\_\_ 172. N Springtime Sugar Base only - Pur. (tough piece - where's the lid?)
- \_\_\_\_\_ 173. N Grape and Gothic Arches Tumbler - Blue (nice color and irid.)
- \_\_\_\_\_ 174. N Grape and Gothic Arches Sauce - Teal (rare base color; nice irid.)
- \_\_\_\_\_ 175. **10 - 11" DUGAN GARDEN PATH VARIANT CHOP PLATE WITH SODA GOLD EXTERIOR - MARI. (EXTREMELY RARE AND DESIRABLE; ONLY 2 OR 3 KNOWN)**
- \_\_\_\_\_ 176. Dugan Grape Delight 6 ftd. Rose Bowl - Mari. (perfect feet; nice)
- \_\_\_\_\_ 177. Dugan Grape Delight 6 ftd. Rose Bowl - Mari. (some foot damage)
- \_\_\_\_\_ 178. 10" Tall Dugan Spiralex Swung Vase - Blue (rare base color)
- \_\_\_\_\_ 179. Dugan Heavy Iris Tumbler - Pur. (scarce; nice irid.)
- \_\_\_\_\_ 180. **DUGAN FARMYARD BOWL WITH 3 IN1 EDGE - PUR. (VERY RARE; HAS BRIGHT HIGHLIGHTS BUT HAS SPOTTY IRID. ON A COUPLE OF THE BIRDS)**
- \_\_\_\_\_ 181. **DUGAN VINTAGE GRAPE COVERED POWDER JAR - PUR. (FANTASTIC EXAMPLE WITH GREAT IRID.)**
- \_\_\_\_\_ 182. **10 - 11" DUGAN WISHBONE AND SPADES CHOP PLATE - PUR. (RARE AND DESIRABLE; NICE YELLOW AND BLUE HIGHLIGHTS)**
- \_\_\_\_\_ 183. **6" DUGAN WISHBONE AND SPADES FLAT PLATE - PUR. (HAS BASKETWEAVE EXTERIOR AND REALLY NICE IRID.)**
- \_\_\_\_\_ 184. Dugan Vineyard Tumbler - Pur. (excellent example - nice bright irid.)
- \_\_\_\_\_ 185. **DUGAN BUTTERFLY AND TULIP FTD. SQUARE BOWL WITH INVERTED FAN AND FEATHER EXTERIOR - PUR. (ONE OF THE BETTER EXAMPLES WE'VE SOLD LATELY)**
- \_\_\_\_\_ 186. Dugan Leaf Ray Handled Ruffled Nappy - Pur. (super irid. and very attractive)
- \_\_\_\_\_ 187. Dugan Holly Whirl Handled Nappy - Pur. (very attractive; bright irid.)
- \_\_\_\_\_ 188. **DUGAN LATTICE AND HEARTS EXTERIOR ICE CREAM SHAPED 8 POINTED BOWL - PUR. (RARE AND UNUSUAL - ALL 8 POINTS ARE TURNED UP)**
- \_\_\_\_\_ 189. 9 1/2" Dugan Cherries / Jewelled Heart Exterior 6 Ruffled Bowl - Pur. (very nice item; detail fades but irid. is nice)
- \_\_\_\_\_ 190. Dugan Double Stem Rose Domed 10 Ruffled Bowl - Pur. (super example with bright multi-colored irid.)
- \_\_\_\_\_ 190A Dugan Double Stem Rose Domed 10 Ruffled Bowl - Celeste Blue (rare and desirable; has some small chips along stretched edge)
- \_\_\_\_\_ 191. **10" DUGAN COSMOS VARIANT FLARED CHOP PLATE - AMY. (SORTA SCARCE WITH NICE SATINY IRID.)**
- \_\_\_\_\_ 192. 7" Dugan Grapevine Lattice Flat Plate - Amy. (scarce with excellent irid.)
- \_\_\_\_\_ 193. 8 1/2" Dugan Apple Blossom Twig Low Ice Cream Shaped Bowl - Blue (scarce; nice satiny finish)
- \_\_\_\_\_ 194. 9" Dugan Windflower Flat Plate - Blue (scarce; desirable; may have a bit of wear)
- \_\_\_\_\_ 195. **DUGAN HARVEST FLOWER 5 PC. TANKARD WATER SET - DK. MARI. (VERY RARE AND DESIRABLE; PITCHER HAS LINE JUST BELOW BASE OF HANDLE)**
- \_\_\_\_\_ 196. **DUGAN DAISY WEB RUFFLED HAT SHAPE - MARI. (RARE AND DESIRABLE; SORTA PASTEL WITH BRIGHT IRID.)**
- \_\_\_\_\_ 197. 11" Dugan Lined Lattice Swung Vase - White (super frosty with bright irid. - nice)
- \_\_\_\_\_ 198. **DUGAN CHERRY WREATH HANDLED WATER PITCHER - WHITE (VERY RARE ITEM WITH BEAUTIFUL IRID.; PERFECT AND TOUGH)**
- \_\_\_\_\_ 199. Dugan Question Mark Stemmed Crimped Edge Compote - P. Opal. (nice item - nice opal.)
- \_\_\_\_\_ 200. **DUGAN SINGLE FLOWER 2 SIDED RUFFLED EDGE APPLIED HANDLED BASKET - P. OPAL. (VERY RARE; OPAL. ON EDGE AND SOOO RARE)**
- \_\_\_\_\_ 201. Dugan Open Opals Stemmed Tri-Cornered Crimped Edge Compote - P. Opal. (great opal. and irid.)
- \_\_\_\_\_ 202. Dugan Caroline Tri-Cornered Crimped Edge Bowl - P. Opal. (nice opal. and irid.)
- \_\_\_\_\_ 203. Dugan Six Petals Ruffled Crimped Edge Bowl - P. Opal. (nice opal.)
- \_\_\_\_\_ 204. 5" Dugan Ski Star 8 Ruffled Sauce with Compass Exterior - P. Opal. (nice opal.)
- \_\_\_\_\_ 205. **6" DUGAN SKI STAR CRIMPED EDGE PLATE - P. OPAL. (SUPER OPAL. - ALL THE WAY TO THE BASE)**
- \_\_\_\_\_ 206. Dugan Ski Star Domed Tri-Cornered Crimped Edge Bowl - P. Opal. (very scarce; nice shape)
- \_\_\_\_\_ 207. Dugan Ski Star Domed Round Crimped Edge Bowl - P. Opal. (scarce; nice opal.)
- \_\_\_\_\_ 208. Dugan Ski Star Domed Banana Shaped Bowl - P. Opal. (scarce; nice opal.)
- \_\_\_\_\_ 209. Beaded Purse with Mirror - Dark (unusual)
- \_\_\_\_\_ 210. **WESTMORELAND CRUCIFIX CANDLESTICK - DK. MARI. (RARE AND DESIRABLE; NICE DARK COLOR AND IRID.)**
- \_\_\_\_\_ 211. **9" WESTMORELAND CORINTH FLARED VASE - BLUE OPAL. (VERY DESIRABLE; REALLY NICE OPAL.)**
- \_\_\_\_\_ 212. Westmoreland Corinth Jack in the Pulpit Vase - Teal (scarce; nice base color)
- \_\_\_\_\_ 213. Imperial (?) Laurel Band Tumbler - Mari. (actually quite a rare item)
- \_\_\_\_\_ 214. Czech Flashed Toothpick or Vase with Enamelled Decor. - Mari. (unusual)
- \_\_\_\_\_ 215. Odd Sugar and Creamer - Amy. (neat pair)
- \_\_\_\_\_ 216. U.S. Glass 1910 Rochester Shriner's Champagne Glass - Clear (nice decoration)
- \_\_\_\_\_ 217. European ftd. Prism Panels Vase - Blue (rare but has a long flat sliver)

