

CARNIVAL GLASS AUCTION



Session #1: Friday, MAY 15, 1998 - 6:00 p.m.



Session #2: Saturday, MAY 16, 1998 - 9:00 a.m.

Held Inside the Mickey Reichel Auction Center

Office: 660-882-5292 · Boonville, Missouri · Home: 660-882-5283

e-mail: mreichel@undata.com

427



350



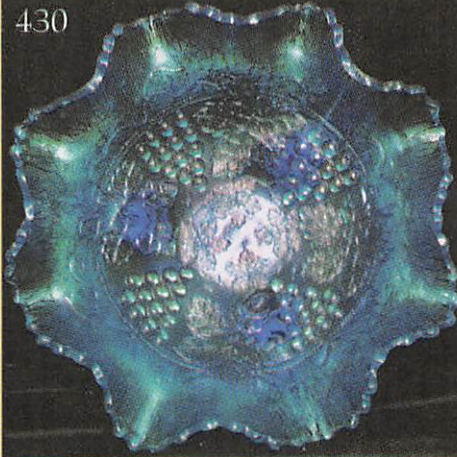
381



369



430



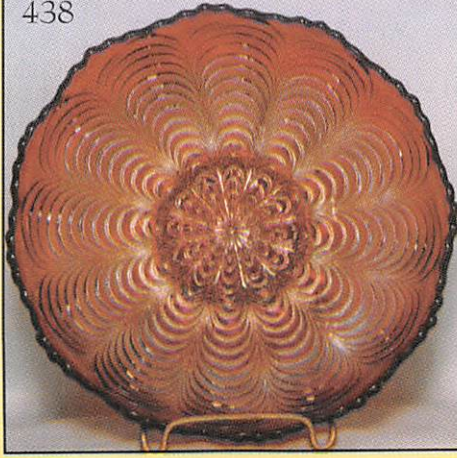
455



298



438



275



NO BUYERS PREMIUM

Held Inside the Mickey Reichel Auction Center

1 Mile North of I-70 on Hwy. 5, Exit 101, Boonville, Missouri • 20 Miles West of Columbia, MO on I-70

Preview Friday 12 p.m. - 6 p.m. and 7:30 a.m. - 9:00 a.m. Day of Auction


Make Reservations **EARLY** at one of these local motels: **(GRADUATION WEEKEND HERE)**


Days Inn: 660-882-8624 • Comfort Inn: 660-882-5317 • Super 8: 660-882-2900

Auction Consists of Rarity, Great Irid. and Variety

WRITE IN BIDS: If you are unable to attend the auction, we will be happy to accept absentee bids which must be received by THURSDAY, MAY 14, 1998. Don't Delay. **FOR AUCTION PRICE RESULTS:** Send S.A.S.E and \$3.00 to 516 Third Street, Boonville, MO 65233.

PLEASE NOTE: There is a \$5 handling charge for each successful bid which will be added to the selling price for all write-in bids. This is in addition to the cost of postage, insurance and packing. Your write-in bid will be entered just as if you are present and bidding. **Successful bidders will be notified in 1 to 3 days by the auctioneer (so be sure to include your phone number).** Direct mail bids to Auctioneer Mickey Reichel, 516 Third Street., Boonville, MO 65233-1536. Terms: Cash or Check accepted with proper I.D. and Social Security Number and References. Announcements made day of the auction supercede all printed material. Not Responsible for Accidents or Sold Items. **No return on any items once they leave the Auction Center (No Exceptions).******

 **Call for additional information: 660-882-5292 days or 660-882-5283 evenings.**

 **FAX: 660-882-5292 (evening hours start FAX transmission after beep)**

 **NOTE: Read each line, Bold and Plain print. Huge Quality Selection.**

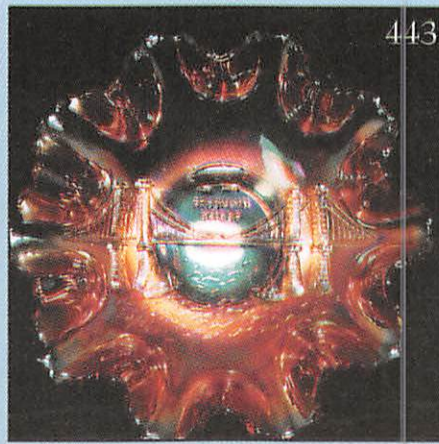
DAY 1 - MAY 15, 1998 - 6:00 P.M.

- | | |
|--|---|
| _____ 1. Red - 8" Contemporary I.G. Open Rose Bowl | _____ 26. A - Mlbg. Rare Radium 3 in 1 Edge Whirling Leaves Bowl - Super |
| _____ 2. Amber - 8" Ripple Vase - Scarce Beauty | _____ 27. G - Near Cut Inverted Thistle Spooner - Very Scarce |
| _____ 3. Amber - Pansy Sugar Bowl - Great | _____ 28. G - 7¼" Ruffle Peacock Tail Bowl - Horlacher Adv. on Rev. |
| _____ 4. Amber - Ruffle Pansy Bowl - Blues & Pinks | _____ 29. Renniger - Round Grape and Gothic Berry Bowl - Rare |
| _____ 5. P - N Peacock at Fountain Tumbler | _____ 30. Pastel Blue Base - Holly Fenton Compote - Marigold Top |
| _____ 6. Smoke - Imp. Luster Rose Fernery - Gorgeous Rarity | _____ 31. G - Spat. FTD Fenton Grape and Cable Plate - Scarce Color |
| _____ 7. P - Imp. Grape 9" Ruffle Bowl - Super | _____ 32. Rev. Amberina - Fenton Vintage Fernery Bowl - Rarer Than Red |
| _____ 8. M - 8" Heavy Grape Plate - Great Irid. | _____ 33. P.M. - Garden Path VT. Rose Bowl - Few Sold |
| _____ 9. A - 10" Ruffled Feathered Serpent Bowl | _____ 34. Moonstone - Fenton Ruffle Holly Bowl - Rose Beauty - Open Bubble in Collar Base, Factory |
| _____ 10. P.O. - 8¼" Tri-Corner C.R.E. Smooth Ray - Caroline Bowl - Scarce | _____ 35. Clear and M - Golden Pansy Plate - 5¼" - Rarity |
| _____ 11. P.O. - 7" Fishscales and Beads Ruffle Bowl - Great Opal | _____ 36. M - 7 Pc. N Matching Fruits and Flowers Berry Set - Rare as Set |
| _____ 12. B - Fenton Peacock & Grape Ruffle Bowl - Multi-Collar Base | _____ 37. M - 7" Ruffle Fenton Vintage Bowl |
| _____ 13. P.O. - 10½" 6 Ruffle Petal and Fan Bowl | _____ 38. M - Star Goblet Eds. Bk. Pg. 243 |
| _____ 14. P.O. - 9" Dome FTD Dogwood Spays Bowl - Full of Color | _____ 39. M - 6½" Imperial Grape Plate - Great |
| _____ 15. Lime G - Opal 5½" Dome FTD Smooth Rays I.C.S. Bowl | _____ 40. P - Dugan 6" 8 Ruffle Rare Little Ski-Star Bowl |
| _____ 16. A - N FTD Ruffled Wishbone Bowl | _____ 41. B - N Grape & Cable Bon Bon - Super Multi |
| _____ 17. M - Mlbg. 9", 3 in 1, Blackberry Wreath Bowl - Satin & Nice | _____ 42. W - Brocade Daffodils? - 2 pc. Plate w/Center Compote - Super Frosty |
| _____ 18. A - 9¼" Mlbg. Peacock Bowl - Radium, Rd. - Great Find | _____ 43. M - U.S. Glass - Rare - 9½" Field Thistle Plate - Radium |
| _____ 19. A - 5¼" Mlbg. Peacocks Deep Bowl - Choice A or B | _____ 44. A - N Leaf Beads Sunflower Int. Rose Bowl - Great Example |
| _____ 20. B - 8½" I.C.S. Dragon & Lotus Bowl | _____ 45. A - Base, Red Sides - Collar Base Peacock and Grape Bowl - Unusual Color |
| _____ 21. G - 12½" Mlbg. Vt. Vase - 4" Base - 5½" Top - Mid Size | _____ 46. P - 9½" Super Scroll Embossed Flat Plate - Multi Elec. |
| _____ 22. P.O. - 9¼" 10 Ruffle Apple Blossom Twig Bowl - Extra Pretty | _____ 47. M - 10¼" FTD 8 Ruffle Chrysanthemum Bowl - Very Nice |
| _____ 23. A - 9" 6 Ruffle Mlbg. Blackberry Wreath Bowl - Satin | _____ 48. M - 9" FTD Deep Chrysanthemum Bowl - Also Nice |
| _____ 24. M - 8" I.C.S. Windflower Bowl - Great Irid. | |
| _____ 25. P - N Collar Base Stippled 3 Fruits Bowl - Dark - Lite Wear | |

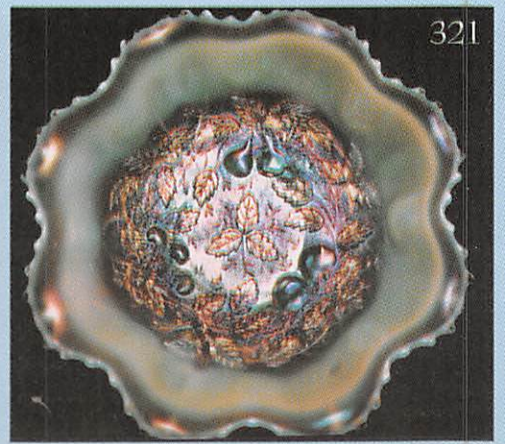
- _____ 49. M - Persian Med. FTD Grape & Cable Ext. Fruit Bowl - Great
- _____ 50. A - 8" N Hand Grip Fruits and Flowers Plate - Multi Stretch Irid.
- _____ 51. A - 7½" N Hand Grip Wild Strawberry Plate
- _____ 52. M - 7½" N Hand Grip Wild Strawberry Plate
- _____ 53. G - 8" N Grape and Cable 2 Sides Up Plate - Scarce
- _____ 54. M - 8" N Grape and Cable 2 Sides Up Plate - Scarce
- _____ 55. P.M. - Stippled Grape and Cable Oval Dresser Tray
- _____ 56. Dk. M - Grape and Cable Candlestick
- _____ 57. M - Grape and Cable Pin Tray - Nice
- _____ 58. M - Grape and Cable Cologne - Radium w/Stopper
- _____ 59. P - Grape and Cable Cologne w/Stopper
- _____ 60. P - Grape and Cable Hat Pin Holder - Extra Nice
- _____ 61. P - Grape and Cable Sweet Meat Compote w/Lid
- _____ 62. A - 8½" N Grape & Cable B.W. Plate - Always a Favorite
- _____ 63. G - 9" N Grape and Cable Spat. FTD Plate - Meander Back - Scarce
- _____ 64. M - Spat. FTD Ruffle Grape and Cable Meander Bowl - N
- _____ 65. G - Good Luck Bowl - BW - Ruffled - Scarce
- _____ 66. P.M. - P.C.E. Good Luck Rib Bk. Bowl - Super Pinks & Blues
- _____ 67. M - Ruffle Rib Bk. Good Luck Bowl - Nice
- _____ 68. B - Ruffle Rib Bk. Good Luck Bowl
- _____ 69. A - Ruffle Rib Bk. Good Luck Bowl - Multi Elec.
- _____ 70. Lav. A - P.C.E. Good Luck Bowl - Rib Bk. - Great Blues & Purple Irid.
- _____ 71. M - P.C.E. Rib Bk. Peacocks Bowl - N - Scarce Shape
- _____ 72. M - Ruffle Rib Bk. Peacocks Bowl - N - Pretty Pinks and Golds
- _____ 73. M - N Stippled Peacocks Plate - Beauty - Out of Round Shape
- _____ 74. M - Rich Dk. Peacocks Rib Bk. Plate - Super - Tooth Chipped in Half
- _____ 75. M - Orange Tree FTD Orange Bowl - Dark & Nice
- _____ 76. B - Orange Tree FTD Orange Bowl - Very Pretty
- _____ 77. P.O. - 11" Ski Star and Compass 6 Ruffle Bowl
- _____ 78. M - Rare - Dark Radium 6 pc. Whirling Star Imperial Punch Bowl & Base w/4 Cups
- _____ 79. A - Fenton Ruffle Peacock and Urn Bowl - Great & Scarce Color
- _____ 80. G - Fenton Ruffle Peacock and Urn Bowl - Great & Scarce Color
- _____ 81. B - Fenton Ruffle Peacock and Urn Bowl - Great Irid.
- _____ 82. M - Fenton Ruffle Peacock and Urn Bowl - Silver & Gold Irid.
- _____ 83. B - Fenton I.C.S. Peacock and Urn Bowl - Mutli Irid.
- _____ 84. M - Fenton I.C.S. Peacock and Urn Bowl - Dark & Nice
- _____ 85. B - Fenton Peacock and Urn Rd. Compote - Super
- _____ 86. M - Fenton Peacock and Urn Plate - Very Pretty
- _____ 87. A - N Ruffle Peacocks Bowl - Great Multi
- _____ 88. A - N P.C.E. Peacocks Bowl - Old Favorite
- _____ 89. M - Spat. FTD 8¼" I.C.S. Stag and Holly Bowl
- _____ 90. Aqua Opal - Super Rare 7" Ruffled Fenton Vintage Bowl
- _____ 91. Super Red - I.C.S. 8" Fenton Vintage Bowl - Dark Multi Irid.
- _____ 92. M - 8¾" Fenton Vintage Ruffle Bowl
- _____ 93. M - Fenton Vintage Ruffle Compote - Scarce
- _____ 94. M - 7" Fenton Vintage Ruffle Bowl
- _____ 95. G - 9" Fenton Vintage Ruffle Bowl - Blues & Pinks
- _____ 96. M - 8¾" Fenton Vintage Ruffle Bowl - Lots of Pinks
- _____ 97. A - 7¼" Fenton Vintage Plate - Scarce Color
- _____ 98. G - 7½" Fenton Vintage Plate - Radium & Scarce
- _____ 99. M - Dk - 8" I.C.S. Orange Tree Bowl - Nice
- _____ 100. Powder B - Base 8" I.C.S. Orange Tree Bowl - Rare Base Color
- _____ 101. M - 8¾" Ruffle Orange Tree Bowl
- _____ 102. W - 9" 6 Ruffle Orange Tree Bowl - Scarce
- _____ 103. B - 9" 6 Ruffle Orange Tree Bowl - A Beauty'
- _____ 104. P.M. - 9" Orange Tree Plate
- _____ 105. Clam - 9½" Orange Tree Plate w/Trunk - Very Nice
- _____ 106. W - 9" Orange Tree Plate w Trunk - Scarce w/Trunk
- _____ 107. W - 9¼" Orange Tree Plate - Frosty & Stretchy
- _____ 108. M - Satin Pony Bowl - Favorite
- _____ 109. M - Radium Pony Bowl - Favorite
- _____ 110. G - 9" Spat. FTD Fenton Grape and Cable Plate - Very Nice
- _____ 111. M - 9" Spat. FTD Fenton Grape and Cable Plate - Very Nice
- _____ 112. Persian Blue - Fenton Vintage Ruffle Bowl - Rare & Pretty One - Very Difficult to Find
- _____ 113. G - 8¾" 3 in 1 Fenton Vintage Bowl - Scarce Shape
- _____ 114. M - 8¼" 3 in 1 Fenton Vintage Bowl - Scarce Shape
- _____ 115. G - 8¾" 8 Ruffle Bowl - Super Pretty
- _____ 116. G - 6¼" 12 Sided Pine Cone Plate - Nice
- _____ 117. M - 6¼" 12 Sided Pine Cone Plate - Pink & Golds
- _____ 118. Cobalt B - 8¼" I.C.S. Dragon & Lotus Bowl - Wow
- _____ 119. B - 8¼" I.C.S. Dragon & Lotus Bowl - Great
- _____ 120. Rev. - Amberina - I.C.S. Dragon & Lotus Bowl - Scarce Beauty
- _____ 121. Amber - I.C.S. Dragon & Lotus Bowl - Scarce Shape & Color
- _____ 122. Rare Amber Opal - Low Dragon & Lotus 8 Ruffle Bowl - Great Rarity
- _____ 123. Super Irid. G - Ruffle Dragon & Lotus Bowl
- _____ 124. Lav. A - Ruffle Dragon & Lotus Bowl
- _____ 125. Lav. - Ruffle Dragon & Lotus Bowl - Pink Silvery Satin Irid.
- _____ 126. P.O. - 3 in 1 Edge Dragon & Lotus Bowl - Lots of Opal
- _____ 127. Clam - 9" Leaf Chain Plate - Very Pretty
- _____ 128. Clam - 8" I.C.S. Leaf Chain Bowl
- _____ 129. Rare - 8¼" Powder Blue I.C.S. Leaf Chain Bowl
- _____ 130. G - Spat. FTD Ruffle Peacock and Grape Bowl
- _____ 131. A - Peacock and Grape Ruffled Bowl - Very Nice
- _____ 132. Vas. Opal - Ruffle Peacock and Grape Collar Base Bowl - Super Rare
- _____ 133. Vas. M - Overlay Ruffle Peacock & Grape Bowl - Scarce
- _____ 134. G - I.C.S. FTD Peacock & Grape Bowl - Dandy
- _____ 135. G - 3 in 1 Peacock and Grape Bowl - Very Scarce Shape
- _____ 136. G - FTD Peacock and Grape Flat Plate - Rare & Nice
- _____ 137. M - FTD Peacock and Grape Flat Plate - Extra Nice
- _____ 138. M - Collar Base Peacock and Grape Plate - Scarce
- _____ 139. P.O. - Rare Beautiful - Peacock and Grape Bowl - Split Chipped Point - Collar Base
- _____ 140. M - FTD Ruffle Dragon and Lotus Bowl - Dark Spur Chip



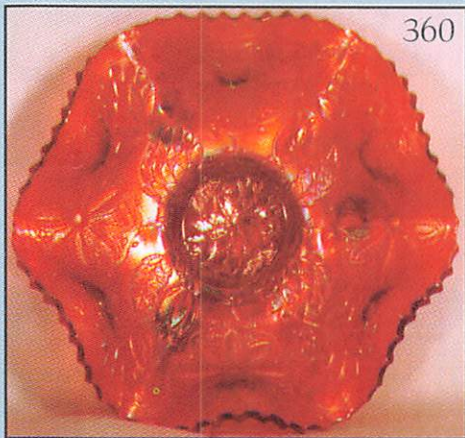
316



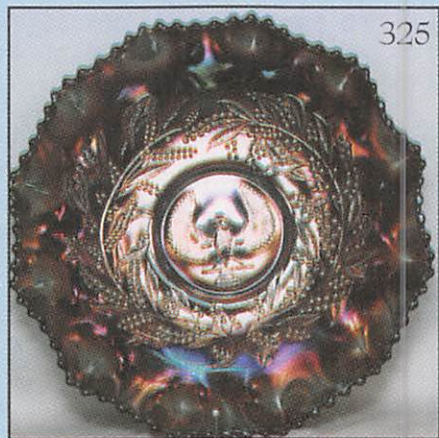
443



321



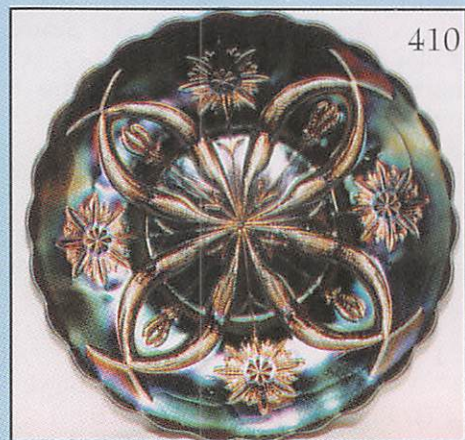
360



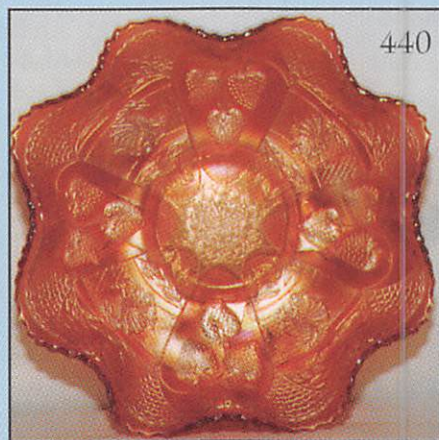
325



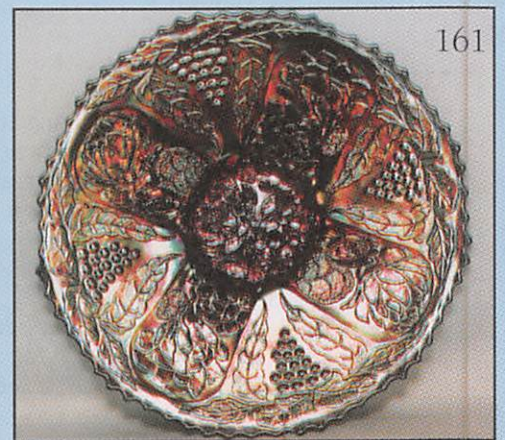
470



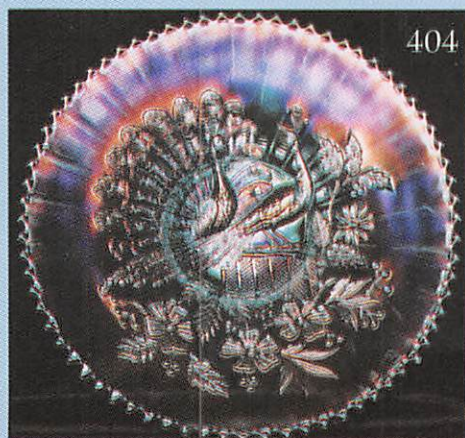
410



440



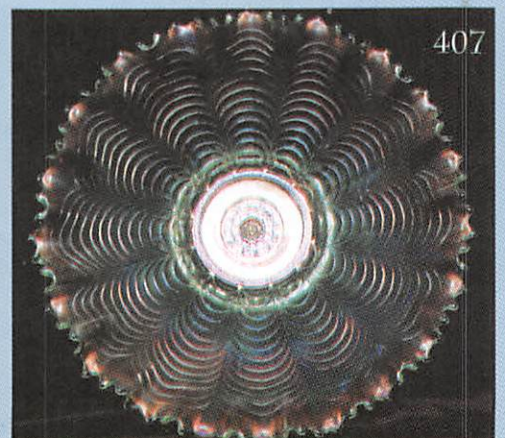
161



404



370



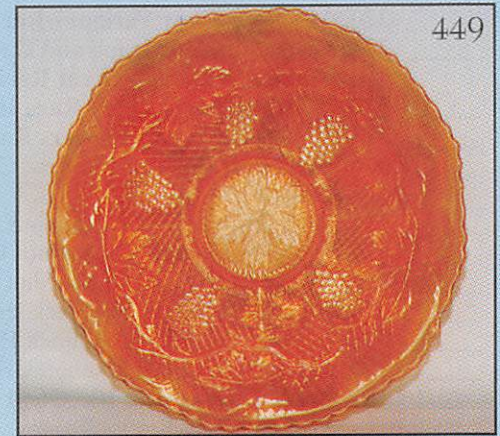
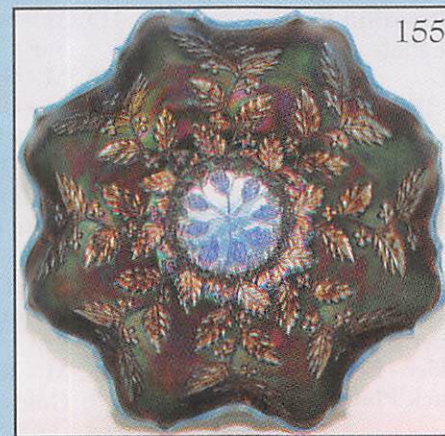
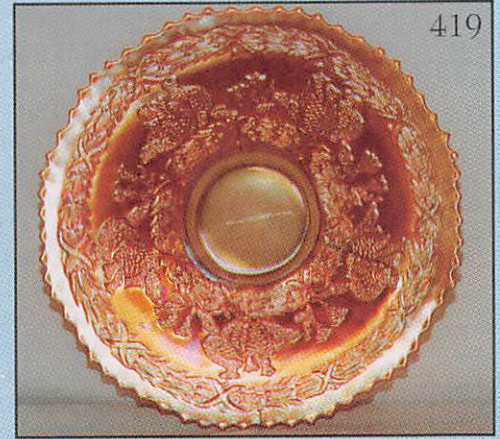
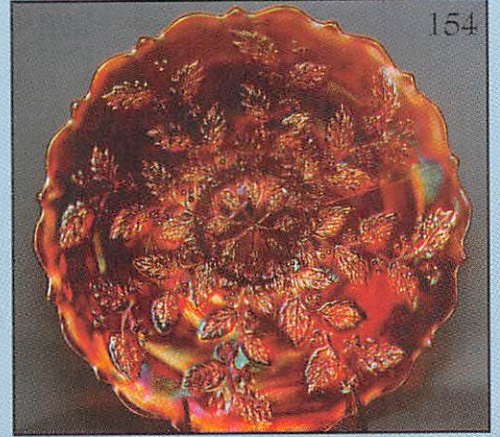
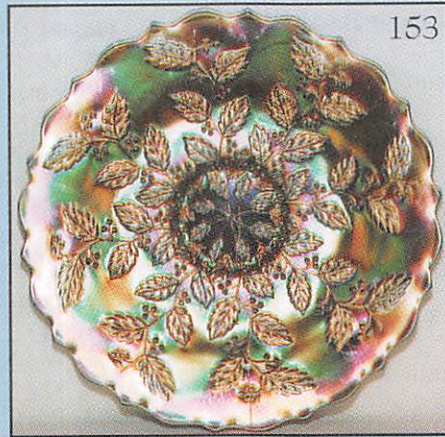
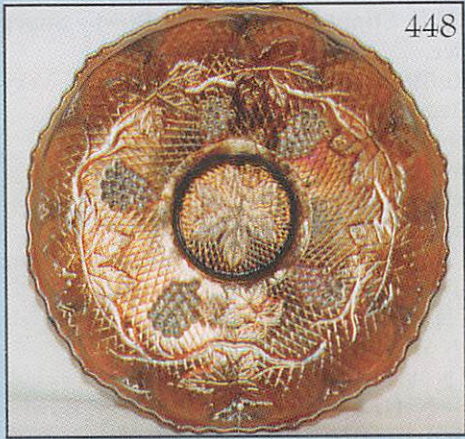
407

**START OF DAY TWO, SATURDAY,
MAY 16, 1998 - 9:00 A.M.**

- _____ 141. Great G - Spat. FTD Dragon & Lotus Ruffled Bowl
- _____ 142. **Vas. Opal - FTD Dragon & Lotus Ruffle Bowl - Rare - Spur Chip**
- _____ 143. Great A - FTD Peacock & Grape Ruffled Bowl
- _____ 144. **Powder B Base - Ruffle Peacock & Grape Bowl**
- _____ 145. M - Ruffled Peacock & Grape Bowl - Very Nice
- _____ 146. B - Ruffled Peacock & Grape Bowl - Multi Elec.
- _____ 147. M - Ruffled Fenton Holly Bowl - Pretty
- _____ 148. M - 3 in 1 Fenton Holly Bowl - Scarce Shape
- _____ 149. G - Ruffle Fenton Holly Bowl
- _____ 150. **Vas. - Marigold Overlay Ruffle Fenton Holly Bowl**
- _____ 151. **Powder Blue Base - Fenton Ruffle Holly Bowl**
- _____ 152. B - Rd. Fenton Holly Bowl - Multi Elec. Blues
- _____ 153. **B - 9½" Fenton Holly Plate - Super Multi**
- _____ 154. **M - 9½" Fenton Holly Plate - Super Pink, Blues & Golds**
- _____ 155. **Cobalt Blue Opal - Ruffle Fenton Holly Bowl - Outstanding Rarity - Gorgeous**
- _____ 156. B - 8½" Ruffle Fenton Thistle Bowl - 1 of the Best
- _____ 157. M - Cosmos Vt. 9½" Ruffle Bowl
- _____ 158. M - Heart and Vine Ruffle Bowl
- _____ 159. **Vas. - Fenton Marigold Overlay Holly Goblet Compote**
- _____ 160. M - 8" I.C.S. Fenton Autumn Acorn Bowl - Dark
- _____ 161. **B - Lotus and Grape Plate - Great Rarity**
- _____ 162. **G - Lotus and Grape Plate - Rarity - w/Repaired Tip - Still A Great Find**
- _____ 163. B - Lotus and Grape Bowl - Very Pretty
- _____ 164. G - Lotus and Grape Bowl - Another Beauty
- _____ 165. M - Lotus and Grape Bowl - Dk. Irid.
- _____ 166. **Vas. - Lotus and Grape 6½" FTD Bowl Ruffled - Rare**
- _____ 167. **G - Lotus and Grape 6½" FTD Bowl Ruffled**
- _____ 168. A - Lotus and Grape - 6½" FTD Round Bowl - Scarce
- _____ 169. M - 6" Rd. FTD Lotus & Grape Bowl
- _____ 170. M - 7¾" Ball FTD Fenton Grape and Cable Bowl
- _____ 171. M - 8¼" Spat. FTD Fenton Grape and Cable Bowl
- _____ 172. **Powder Blue - 8" Ball FTD Fenton Grape and Cable Bowl - Rare**
- _____ 173. **Lime - 8" Spat. FTD Fenton Grape & Cable Bowl - Rich M - Overlay**
- _____ 174. M - 9" N Strawberry & BW Plate - Very Pretty
- _____ 175. M - Pretty 9¼" Fenton Ruffled Thistle Bowl
- _____ 176. M - 10 Ruffle Dugan Double Stem Roses Bowl - Beauty
- _____ 177. M - 10 Ruffle - Windflower Bowl - Pretty & Scarce Shape
- _____ 178. **Yellow Amber - Leaf Swirl Westmoreland Compote - Neat Item**
- _____ 179. M - Garland Rose Bowl
- _____ 180. P.M. - Spat. FTD Ruffle Peacock and Grape Bowl
- _____ 181. P - Coin Spot Compote
- _____ 182. M - Panther Berry Bowl - Ruffled 5½"
- _____ 183. M - 6" Water lily & Cattail Tri-Corner Radium Whimsey
- _____ 184. P - Rd. N Grape & Cable Thumb Print 4½" Bowl
- _____ 185. **Lav. - 7 Ruffle Leaf Ray Nappy - Great**
- _____ 186. A - Spade Shape Leaf Ray Nappy
- _____ 187. M - Dia. Ring 5¼" Berry Bowl
- _____ 188. **Amber - 6" Imp. Grape Berry Bowl**
- _____ 189. M - 5½" Lustre Rose Berry Bowl
- _____ 190. B - Blackberry Spray Hat
- _____ 191. M - 5½" Windmill Berry Bowl
- _____ 192. A - Ruffle Pony Bowl - Scarce Color

- _____ 193. BA - 6 Pr. Clip-On Earrings - 1 Price
- _____ 194. BA - 18" Double Stand of Beads
- _____ 195. BA - 48" Beaded Necklace
- _____ 196. BA - 7" 3 Row Bead Bracelet - Jeweled Clasp
- _____ 197. **BA - 12" Double Bead Necklace - Jeweled Clasp**
- _____ 198. BA - 24" Single Beaded Necklace
- _____ 199. BA - 24" Single Beaded Necklace
- _____ 200. Beaded and Sequined Scarf
- _____ 201. **BA - Super 14" x 1¼" Woven Beaded Choker**
- _____ 202. **BA - 20", 16 Stran Bead Necklace**
- _____ 203. **BA - 18" Multi Stran Bead Necklace**
- _____ 204. BA - Beaded Purse & Sequins
- _____ 205. Tapestry w/Beaded Decor Purse
- _____ 206. Glass Beads Sewn All Over Eve. Bag
- _____ 207. Beaded Draw String Bag
- _____ 208. Beaded Draw String Bag
- _____ 209. **Size Med. Ladies Dress w/Beads Sewn All Over**
- _____ 210. P - 9¾" N Tree Trunk Vase
- _____ 211. **Rare P.O. - 9½" Fenton Rustic Vase - Lots of Opal - Few Known**
- _____ 212. M - 7¼" N Tree Trunk Squatty Vase 4¾" Top
- _____ 213. M - 15" Ripple Vase - 6" Top - Beauty
- _____ 214. **B - 14½" Spear Head & Diamond Vase**
- _____ 215. M - 15¾" Fenton Thin Rib Vase
- _____ 216. B - 16½" Fenton Thin Rib Vase
- _____ 217. M - 11" Radium Beaded Bulls Eye - Imp. 6¼" Top - Beauty
- _____ 218. **P - 12¼" N Mid Size Tree Trunk Vase - Great Multi Irid.**
- _____ 219. **P - 12¼" N Mid Size Thin Rib Vase - 4¾" Base 5¼" Top - Great**
- _____ 220. M - 8¼" Imperial 2 Handle Vase - Dark
- _____ 221. **M - Great Radium Dark Mary Ann Vase**
- _____ 222. P - 10¾" N Thin Rib Vase
- _____ 223. P - 10¼" Lined Lattice Vase - Scarce
- _____ 224. M - 10¼" Ripple Vase - Pretty
- _____ 225. M - Ruffled Sailboat Sauce Bowl
- _____ 226. M - Ruffle Fenton Acorn Bowl
- _____ 227. A - 5½" 6 Ruffle Peacock Tail Bowl
- _____ 228. P - 6" Ruffle Imp. Grape Bowls - 2 x \$
- _____ 229. G - 7¾" Heavy Grape Plate
- _____ 230. **P - 6¼" Imperial Grape Plate - Great**
- _____ 231. **G - 6½" Imperial Grape Plate - Scarce**
- _____ 232. M - 6½" Imperial Grape Plate - Pinks
- _____ 233. B - Ruffle Sailboats Sauce Bowl - Scarce
- _____ 234. M - 8½" Rd. Imp. Double Dutch FTD Bowl
- _____ 235. G - 9½" Ruffle Coin Dot Bowl
- _____ 236. **P - N Stippled Three Fruits Plate - Great Multi**
- _____ 237. A - N Three Fruits B.W. Plate - Multi - No Wear
- _____ 238. M - N Three Fruits B.W. Plate - Pink & Golds
- _____ 239. M - N Three Fruits Pl. Bk. Plate - Very Nice
- _____ 240. **B - N Stippled Three Fruits plate - Multi Elec.**
- _____ 241. G - N Three Fruit B.W. Plate - Scarce
- _____ 242. G - N Three Fruits Pl. Bl. Plate - Very Pretty
- _____ 243. M - Imp. 6½" Rd. Deep Lustre Rose Bowl
- _____ 244. **P - Imp. 7" Rd. Deep Lustre Rose Bowl - Great Multi**
- _____ 245. G - Ruffle Imp. Shell and Sand Bowl - Rarity - Silver Radium
- _____ 246. G - N Ruffled Sunflower Bowl - Pretty
- _____ 247. M - N Ruffled Sunflower Bowl - Blues & Pinks

- _____ 248. G - 3 in 1, 9" Fenton Stippled Ray Bowl - Beauty
- _____ 249. Celeste - 8 3/4" 3 Row O.E. Ruffle Bowl - Rare
- _____ 250. I.G. - 8 1/2" Vas. 3 Row O.E. Round Bowl - Rare
- _____ 251. M - 6 Ruffle Ribbon Tie Bowl - Nice
- _____ 252. I.G. - N Rd. Bushel Basket - Scarce
- _____ 253. M - N Round Bushel Basket - Very Nice
- _____ 254. B - Ruffle Rib Bk. Good Luck Bowl - Super Elec. Blue & Purple
- _____ 255. M - Ruffle Rib Bk. Good Luck Bowl - Super Pink & Golds
- _____ 256. P - Ruffle Rib Bk. Good Luck Bowl - Pink, Yellow, Blues - Great
- _____ 257. P - Ruffle B.W. Good Luck Bowl - Scarce w/Basketweave
- _____ 258. M - 2 1/2" Base Orange Tree Mug
- _____ 259. B - 3" Base Orange Tree Mug - Beauty
- _____ 260. G - N Rays 2 Sides Up Bon Bon
- _____ 261. A - Mlbg. Hobnail Spittoon - Rare Radium Beauty
- _____ 262. A - Mlbg. Hobnail Swirl Rose Bowl - Scarce
- _____ 263. M - Mlbg. Hobnail Swirl Rose Bowl - Scarce
- _____ 264. A - Ruffle B.W. Greek Key Bowl - Very Pretty
- _____ 265. G - 8 3/4" N Grape & Cable Ruffle Bowl - Emerald Look
- _____ 266. B - 10 1/2" Persian Medallion Chop Plate - Way Above Ave. Irid.
- _____ 267. P - Imp. 8" Ruffle Windmill Bowl - Super
- _____ 268. Amber - Imp. Pansy Ruffle Relish - Very Scarce
- _____ 269. M - Stork and Rushes Mug
- _____ 270. A - Stork and Rushes Mug - Radium & Scarce
- _____ 271. A.O. - Dandelion Mug - Super Marigold Overlay - Unusual Color
- _____ 272. G - 3 in 1 Captive Rose Bowl - Scarce Shape
- _____ 273. B - 3 in 1 - Captive Rose Bowl - Scarce Shape
- _____ 274. B - Fenton 5 1/2" Round Stipple Rays Scale Band Bowl - Rare Color
- _____ 275. Rare G - Fenton Thistle Plate - Ranks at the Top
- _____ 276. B - 9 1/2" 3 in 1 Smooth Ray Bowl - Scarce
- _____ 277. M - Garden Path Vt. Soda Gold Ext. Bowl - 9" Round - Scarce
- _____ 278. M - Weeping Cherry - 8 1/4" 10 Ruffle - Rare Dugan Pattern
- _____ 279. A - Dugan Star Fish Bon Bon - Scarce
- _____ 280. Red - 6 Ruffle Holly Hat - Scarce & Nice
- _____ 281. Red - 4 Corner Blackberry Spray Hat
- _____ 282. M - Dugan 8 3/4" Vintage Bowl
- _____ 283. A - Dugan Rain Drops Crimp Edge Bowl - Very Scarce Color
- _____ 284. M - Spectors Department Store Plate - Rare
- _____ 285. G - Super N Grape and Cable Bw. Plate - Vt.
- _____ 286. P - P.C.E. N B.W. Strawberry Bowl - Great Multi Irid.
- _____ 287. P - Ruffled N Strawberry B.W. Bowl - Great
- _____ 288. M - Stippled Radium N Peacocks Plate - Beauty
- _____ 289. Smoke Pastel - N Peacocks Plate - Rare Base Color
- _____ 290. P - N Peacocks Plate - Purples, Pinks & Golds
- _____ 291. P.M. - Ruffled Peacocks Bowl - Rare B.W. Back - N - Great Yellows & Green
- _____ 292. M - P.C.E. Peacocks Bowl - Great - N
- _____ 293. M - Ruffle Peacocks Bowl - Super Pinks - N
- _____ 294. A - N Ruffle Peacocks Bowl - Blues, Pinks & Purples
- _____ 295. M - Round Large Mikado Compote
- _____ 296. G - Mlbg. Peacock Tail Vt. Compote - Super - Base Nicks
- _____ 297. P.M. - Mlbg. Peacock Tail Vt. Compote - Satin Silver & Pinks
- _____ 298. P - Super - Radium Multi Imperial Grape 9" Plate - Rare Beauty
- _____ 299. P - Super - 9" Ruffle Imp. Grape Plate or Low Bowl
- _____ 300. Lime Vas. - 9" Imperial Grape Plate - Silver Irid. - Glows - Rare
- _____ 301. Lav. - 9" Low Ruffle Plate or Bowl - Imperial Grape
- _____ 302. M - 8 3/4" Rare Peacock Tail Plate - Chip Out of Marie - Very Rare & Pretty
- _____ 303. M - 9 1/4" Flat FTD Two Flowers Plate - Great Rarity
- _____ 304. M - Vintage Powder Jar w/Lid - Very Nice
- _____ 305. M - Very Pretty Imp. Grape Water Pitcher
- _____ 306. M - Dark Vineyard Water Pitcher - Pretty
- _____ 307. M - Kittens Vase or Toothpick Holder
- _____ 308. M - Kittens Bowl - 4 Sides Up
- _____ 309. M - Kittens 6 Ruffle Bowl - Great Irid.
- _____ 310. M - Kittens Cup - Pretty One
- _____ 311. M - Kittens Card Tray - Banana Dish - Pretty
- _____ 312. M - Kittens Cereal Bowl - Really Nice
- _____ 313. M - Kittens 4 1/2" Flat Plate - Radium
- _____ 314. M - 6 1/4" Lions Round Bowl
- _____ 315. M - 7" Round Lions I.C.S. Bowl
- _____ 316. A.O. - Ruffle N Stippled 3 Fruits Collar Base Bowl - Rare
- _____ 317. P - N Dome Base Ruffle 3 Fruits Bowl, B.W. & Grape Bk. - Super Irid.
- _____ 318. M - N Dome Base Ruffle 3 Fruits Bowl, B.W. & Grape Bk. - Super Irid.
- _____ 319. Clam or P.M. - N Smooth Bk. 3 Fruits Bowl - Beauty - Ruffled - Collar Base
- _____ 320. Pastel Smoke - N Smooth Bk. 3 Fruits Bowl - Rare Beauty - Collar Base
- _____ 321. A.O. - FTD. 3 Fruits Medallion Bowl - Pastel Rarity
- _____ 322. P - P.C.E. N Stippled 3 Fruits Bowl - Multi Elec.
- _____ 323. M - 9 1/4" Fenton 3 Fruits 12 Sided Plate - Great Example
- _____ 324. W - Collar Base Ruffle Stippled 3 Fruits Bowl - Scarce to Rare
- _____ 325. BA - 9 3/4" Australian Thunderbird Bowl - Great Rarity
- _____ 326. M - Beautiful 8 1/2" Wicker Works Plate - Rare
- _____ 327. 4 1/2" Round Golden Poppies Bowl - Unlisted Rarity - Beauty
- _____ 328. B - Square Shape 8 Ruffle Plaid Bowl - Scarce Beauty
- _____ 329. B.A. - 2 Sides Up Open Edge Basket - Very Scarce Color
- _____ 330. M - 9 1/2" 16 Ruffle Australian Swan Bowl - Hot Items
- _____ 331. M - 9" 8 Ruffle Australian Kingfisher Bowl - No Blossoms
- _____ 332. B.A. - 5 1/2" Australian 8 Ruffle Magpie Bowl
- _____ 333. B.A. - 5 1/4" Australian 12 Ruffle Swan Bowl
- _____ 334. B.A. - 5 1/4" Australian 12 Ruffle Kingfisher Bowl
- _____ 335. M - European Heavy Vine Flashed 3 1/2" Dia. Dish w/Lid - Rare Pattern
- _____ 336. M - European Heavy Vine Flashed 4 1/4" Oval Pin Dish - Rare
- _____ 337. M - European Heavy Vine Flashed 6 3/4" Cologne w/Stopper - Rare
- _____ 338. M - European Heavy Vine Flashed 7 3/4" Cologne w/Stopper - Rare



- _____ 339. M - European Heavy Vine Flashed 4 1/4" Tumbler - Base Chip
- _____ 340. M - European Heavy Vine Flashed 3 3/8" Tumbler - Base Chips
- _____ 341. M - English Triands & Towers Creamer
- _____ 342. M - 2 7/8" Tall African Shield Vase 2/Wire Holder - Beauty - Complete
- _____ 343. M - Super Dk. Radium English Hobstar Boat Shaped Bowl
- _____ 344. M - English Beautiful Diving Dolphins Bowl - 8" - Very Scarce
- _____ 345. M - 11" 6 Ruffle Moon Print Bowl
- _____ 346. B - Hen and Chicks Covered Dish
- _____ 347. Neat Pair Marigold Flash Candlesticks - Pattern Unknown
- _____ 348. Amber - 8" Stippled Ray Int. Bowl - Pinwheel in Collar Base? - Beauty - European ? Maker
- _____ 349. M - 2 3/4" Tall Glass - Pattern ? - Quilt Base w/10 Dots Around Top - Rare Size
- _____ 350. P - Super - Square Butterfly and Tulip Bowl - Outstanding Example
- _____ 351. A - 7" Round Mlbg. Hanging Cherries Bowl - Beauty
- _____ 352. Moonstone - 8" Ruffled Westmoreland Scales Bowl - Rare
- _____ 353. M.M.G. - Westmoreland Caroline Dogwood 8" Rd. Bowl - The Best I've Seen
- _____ 354. Lav. Smoke - 8 1/2" I.C.S. Apple Blossom Twig Bowl - Super Pastel Rarity
- _____ 355. Vas. - Blackberry Spray Hat Ruffled - 2 Sets of Berries
- _____ 356. P.O. - 6 1/2" Dugan Cherry Jewel Heart Ext. Plate or Low Bowl
- _____ 357. G - Ruffle Peacock Tail Ruffle Hat Adv. Quincy Jewelry
- _____ 358. Super Irid. G - Fine Cut Roses Candy Dish FTD - Smooth Int.
- _____ 359. Red - J.I.P. 2 Row O.E. Hat - Great Find
- _____ 360. Rev. Red Amberina - Water lily FTD Sauce - Super Rarity
- _____ 361. W - 5 1/2" N Peacock at Urn I.C.S. Bowl
- _____ 362. A - 5 1/2" N Peacock at Urn I.C.S. Bowl
- _____ 363. W - 10 1/2" N Grape & Cable I.C.S. Bowl - Scarce
- _____ 364. W - 5 3/4" N Grape & Cable I.C.S. Bowl - Cutie
- _____ 365. G - N Singing Birds Mug - Great
- _____ 366. P - N Singing Birds Mug - Great
- _____ 367. M - N Singing Birds Mug - Great
- _____ 368. G - P.C.E. Rare Stippled Strawberry Rib Bk. Bowl
- _____ 369. G - N Rib Bk. Stippled Strawberry Plate - Rare - Pinks, Blues & Golds
- _____ 370. M - Rose Show Variant - Rare Beautiful Plate
- _____ 371. G - N Stippled Grape and Cable Plate - Bronze - Pinks and Golds - Great Rarity
- _____ 372. M - Butter and Berry Rare Hat Pin Holder
- _____ 373. G - N Hearts and Flowers Rare Compote
- _____ 374. M - N Hearts and Flowers Compote - Beautiful Pinks & Blues
- _____ 375. P - N Blossom Time Compote - Scarce
- _____ 376. P - N Grape and Cable Shot Glasses - 2 x \$
- _____ 377. M - N Grape and Cable Shot Glass
- _____ 378. P - Imperial Flute Toothpick Holder - Beauty
- _____ 379. G - Imperial Flute Toothpick Holder - Very Scarce
- _____ 380. M - Imperial Flute Toothpick Holder - Beauty
- _____ 381. B - N Stippled Rib Bk. Good Luck Plate - Great Rarity
- _____ 382. B - N P.C.E. Stippled Good Luck Bowl - Super Multi Elec.
- _____ 383. B - N Ruffle Stippled Good Luck Bowl - Very Scarce Beauty
- _____ 384. M - N Stippled Ray Butterfly Bon Bon
- _____ 385. Violet Pastel - N Rays Bon Bon - Ray Color
- _____ 386. P - Fishermans Mug - Beautiful
- _____ 387. M - Fishermans Mug - Radium Rarity
- _____ 388. A - 6" 6 Ruffle Isacc Benesch & Sons Adv. Bowl - Great Example
- _____ 389. M - 8 1/2" N Wishbone Bowl FTD
- _____ 390. A - 8 1/2" N Wishbone Bowl FTD
- _____ 391. M - 7 1/2" N Wishbone Deep Bowl FTD
- _____ 392. Rare P - N Grape and Cable Fernery Bowl - Great Find
- _____ 393. B - N P.C.E. Stippled Grape and Cable Bowl - Multi Elec.
- _____ 394. P - N 9" Grape and Cable Vt. B.W. Plate - Nice One
- _____ 395. M - N Yellow Golds & Blue Irid. Fruits and Flowers Bon Bon - Wow!
- _____ 396. P - N Fruits and Flowers Bon Bon
- _____ 397. Saph. - N Fruits and Flowers Bon Bon - Rare Base Color
- _____ 398. G - N Wishbone FTD Bowl - Very Pretty
- _____ 399. W - N Wishbone FTD Bowl - Frosty - Rarity
- _____ 400. B - N Wishbone FTD Bowl - Rare - Blue & Purple Irid. - Rare Base Color
- _____ 401. M - N 8" Wishbone Tri-Corner FTD Plate - Rare
- _____ 402. W - N 9" Smooth Bk. Peacocks Plate - Scarce
- _____ 403. M - N 9" Rib Bk. Peacocks Plate - Beautiful
- _____ 404. Dark I.B. - Tried to be Saph. - N Rib Bk. Peacocks Plate - Rare & Pretty
- _____ 405. P - Ruffle B.W. Bk. Nippon Bowl - Great
- _____ 406. Aqua Marine I.B. - P.C.E. Rib Bk. Nippon Bowl - Great Pastel
- _____ 407. Lime I.G. - P.C.E. Rib Back Nippon Bowl - Beautiful One
- _____ 408. M - 9" Nippon Plate - B.W. Ext. - Very Scarce & Nice
- _____ 409. G - Super Ruffle Nippon B.W. Back Bowl
- _____ 410. P - 10 3/4" Four Flowers Vt. Chop Plate - Super Beauty & Rare Rare
- _____ 411. G - 10 3/4" Four Flowers Vt. Chop Plate - Super Rare - Irid. Worn
- _____ 412. Em. G - 9 1/2" Four Flowers Vt. Plate - Super - Sm. Flaw On Edge - Factory
- _____ 413. Teal Dk. G - 9 1/4" Four Flowers Vt. Ruffle Bowl - Super Bl. & Purple Irid.
- _____ 414. Teal - 8 1/2" Four Flowers Vt. Rd. Bowl - Super Pretty & Rare
- _____ 415. Yellow Amber - 8" Four Flowers Vt. Rd. Bowl - Super Rarity
- _____ 416. M - Goofus Palm Beach 4" Rose Bowl - Rare
- _____ 417. M - Goofus Palm Beach Hair Receiver - Rare
- _____ 418. M - 8 Ruffle Coral Bowl - Scarce & Pretty Example
- _____ 419. M - One of the Best 9" Coral Plates - Rarity
- _____ 420. Radium Dugan Blue - Apple Blossom Twig 8 3/4" Plate - Super
- _____ 421. P.M. - N Singing Birds Mug - Magnificent Irid.
- _____ 422. P - P.C.E. Rib Bk. Good Luck Bowl - Multi Elec.
- _____ 423. P - Ruffle Rib Bk. Good Luck Bowl - Multi Elec.
- _____ 424. P.M. - Ruffle Rib Bk. Good Luck Bowl - Pink & Bl.
- _____ 425. M - Rib Bk. Good Luck Plate - Blues, Pinks & Golds - Very Pretty

- _____ 426. M - Rib Bk. P.C.E. Good Luck Bowl - Super Pink, Blue & Golds
- _____ 427. **B - Super P.C.E. Stippled Peacocks Bowl - Rib Bk.**
- _____ 428. B - Super 9 P.C.E. Rib Bk. Peacocks Bowl - Elec.
- _____ 429. P - Ruffle Rib Bk. Peacocks Bowl - Also Super
- _____ 430. **Rare Rare - Beautiful Ball FTD Fenton Celeste 8 1/2" Ruffle Bowl**
- _____ 431. M - P.C.E. Rib Bk. Peacocks Bowl - Last Chance for a Peacock
- _____ 432. **G - Orange Tree Loving Cup - Very Scarce**
- _____ 433. M - Orange Tree Loving Cup - Super Example
- _____ 434. **Rare - Rich Amber - 6 1/2" Round Collar Base Horse Medallion Bowl - Reddish Irid.**
- _____ 435. **G - FTD J.I.P. Horse Medallion Bowl - Scarce**
- _____ 436. G - FTD 8 Ruffle Horse Medallion Bowl - Scarce Beauty
- _____ 437. M - 7 1/2" Flat Horse Medallion Plate - Always Desirable
- _____ 438. **Rare Cherry Red 6 1/2" I.C.S. Peacock Tail Bowl - One of the Best**
- _____ 439. M - 8 3/4" Leaf Chain Dark Plate
- _____ 440. **M - 10" 8 Ruffle FTD Dragon and Strawberry Bowl - Scarce**
- _____ 441. P - 10 3/4" Heavy Grape Chop Plate - Silver Mirror Irid. Wow!
- _____ 442. P - 7 3/4" Dugan Holly Berry Bowl
- _____ 443. **M - 10 Ruffle Brooklyn Bridge Bowl - Super Radium**
- _____ 444. **M - 6 Ruffle Brooklyn Bridge Bowl - Radium**
- _____ 445. M - Fenton Holly Ruffle C.R.E. Compote - Scarce Shape
- _____ 446. M - Curved Star or Cathedral Chalice
- _____ 447. G - 9 1/4" Fenton Spat. FTD Grape & Cable Plate - Blues & Pinks
- _____ 448. **Rare A - Concord 9" Plate**
- _____ 449. **Rare - 9" Concord Plate - Beauty - Pinks, Greens & Golds**
- _____ 450. M - Ruffle Concord Bowl - Super Pretty
- _____ 451. G - Ruffle Concord Bowl - Beautiful
- _____ 452. **G - 3 in 1 Concord Bowl - Very Scarce Beauty**
- _____ 453. M - Imperial Grape Decanter w/Stopper - Blue & Pink Irid.
- _____ 454. M - Imperial Grape Wines - 4 Matching - 4 x \$
- _____ 455. **P.M. - Super Stippled Peacocks Rib Back Plate**
- _____ 456. B - Multi Elec. Ruffle Peacocks Bowl - A Beauty
- _____ 457. **B - Persian Medallion Hair Receiver - Rarity**
- _____ 458. **P.M. - Bluish Blue & Pink Irid. Fine Cut & Roses Rose Bowl - Pretty Pastel**
- _____ 459. M - Beaded Star Rose Bowl - Radium - Very Scarce
- _____ 460. W - Grape Vine Lattice 7" Plate - Super
- _____ 461. W - Persian Garden & Pool of Pearls 6 3/4" Plate - Scarce Bk. Pattern
- _____ 462. **W - Fanciful Flat 8 1/2" Plate - Fantastic Irid.**
- _____ 463. **Rare B - Beaded Shell Mug**
- _____ 464. P - Beaded Shell Mug
- _____ 465. M - Beaded Shell Mug
- _____ 466. **Lime I.G. - Rib Bk. Ruffle Hearts & Flowers Bowl - Blues & Pinks**
- _____ 467. Dk. Rich M - Rib Bk. Ruffle Hearts & Flowers Bowl
- _____ 468. **P - 9" Rib Bk. Hearts & Flowers Plate - Scarce Item**
- _____ 469. B - Ruffle Rib Bk. - Embroidered Mums Bowl - Very Scarce
- _____ 470. **Red - 6 Ruffle Holly Compote - Super Example**
- _____ 471. **M - 9 1/4" Sunflowers and Diamond Vase - Pinks & Blues - Dark and Scarce**
- _____ 472. M - Split Diamond Creamer
- _____ 473. M - Lea Creamer - Dark Irid.
- _____ 474. M - Beaded Swirl Compote - Scarce
- _____ 475. **P - Very Scarce Heron Mug - Beauty**
- _____ 476. M - Fenton Water lily Cattail Tumbler
- _____ 477. M - Apple Tree Tumbler
- _____ 478. **M - Rare Interior Poinsettia Tumbler**
- _____ 479. **M - Rare - Harvest Flower Tumbler**
- _____ 480. B - Milady Tumbler - Pretty One
- _____ 481. W - Floral & Grape Tumbler - Epoxy on Base - Very Scarce & Pretty
- _____ 482. M - Leaf & Beads Nut Bowl - **N** - Sunflower Int.
- _____ 483. **Blue Opal - Peacocks Bowl - Not Irid.**
- _____ 484. M - Persian Garden 7" Plate - Very Pretty
- _____ 485. **I.B. - N Grape & Cable Punch Cup - Rare**
- _____ 486. P - **N** Memphis Punch Cups - 2 x \$
- _____ 487. P - **N** Grape & Cable Punch Cups
- _____ 488. M - Daisy & Plume **N** Stem Rose Bowl
- _____ 489. P.M. - 6 1/4" Persian Medallion Plate
- _____ 490. M - ? Leaf & Berry English Open Sugar Bowl
- _____ 491. M - Whimsey Tumbler - Pat. ?
- _____ 492. **G - Mlbg. 10 1/4" Satin 6 Ruffle Rosalind Bowl - A Beauty**
- _____ 493. **A - Mlbg. 9 1/2" 3 in 1 Ruffle Radium Rays & Ribbons Bowl**
- _____ 494. **G - Mlbg. 6" Radium 3 in 1 Blackberry Wreath Bowl**
- _____ 495. G - Mlbg. 7 1/2" 6 Ruffle Blackberry Wreath Bowl - Radium
- _____ 496. A - Mlbg. 8" Round Blackberry Wreath Bowl
- _____ 497. **P.M. - 10 1/2" Big Basketweave Vase**
- _____ 498. M - 9" Drapery Vt. Vase - Scarce
- _____ 499. Russet - 11 1/2" Thin Rib Vase
- _____ 500. 12 1/2" Amber Ripple Vase - Marigold Overlay
- _____ 501. M - 10 3/4" J.I.P. Morning Glory Vase
- _____ 502. A - 13" Diamond and Rib Vase
- _____ 503. M - 12" Bullseye & Bead Vase
- _____ 504. A - 8" Concave Flute Radium Vase
- _____ 505. M - 9" Concave Flute Radium Vase
- _____ 506. P.O. 6 1/4" Target Vase 3 3/4" Base - 6 1/2" Top
- _____ 507. M - 9" Rustic Vase
- _____ 508. M - Butterfly and Berry Vase

APPROXIMATELY 40 OR 50 ITEMS SOLD AT END OF AUCTION

**REMEMBER: Book Motel Early
Graduation Weekend**

THANK YOU

WE APPRECIATE YOUR BUSINESS!

BOTH BUYER AND SELLER

"Glass Attracts Glass"

CALL US TODAY FOR YOUR AUCTION OF
1 PIECE OR ENTIRE COLLECTION!

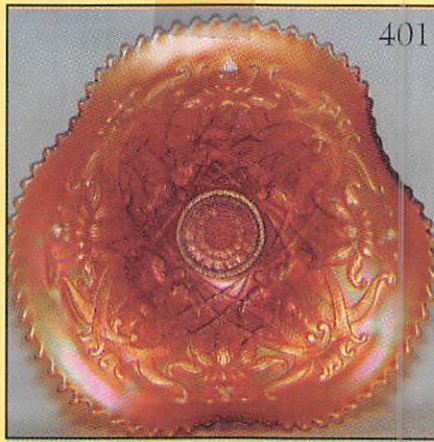
NEXT AUCTION SEPT, 19, 1998

Respectfully

Mickey Reichel



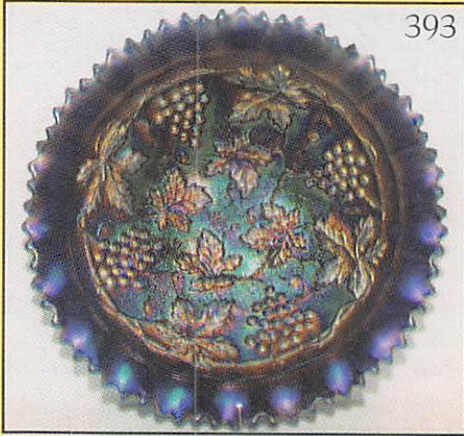
383



401



388



393



368



382

MICKEY REICHEL

AUCTION COMPANY

516 THIRD STREET

BOONVILLE, MO 65233-1536



FIRST CLASS



211 - 372

SPECIAL INVITATION TO:

