



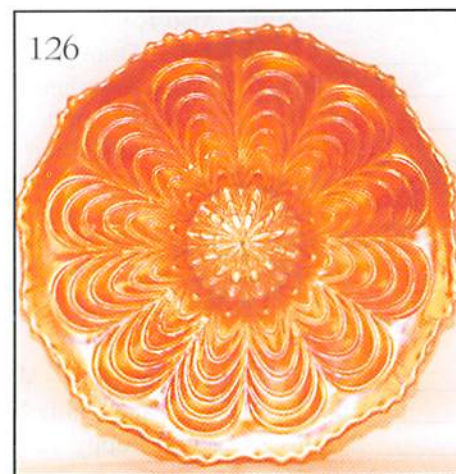
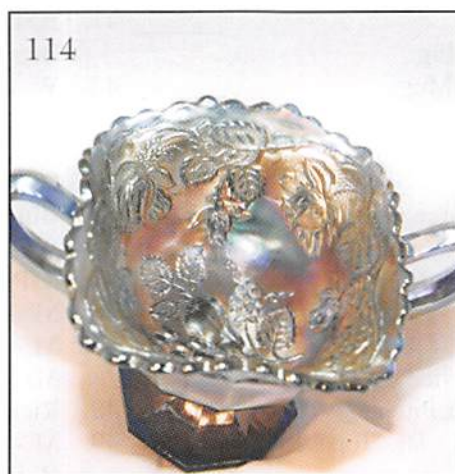
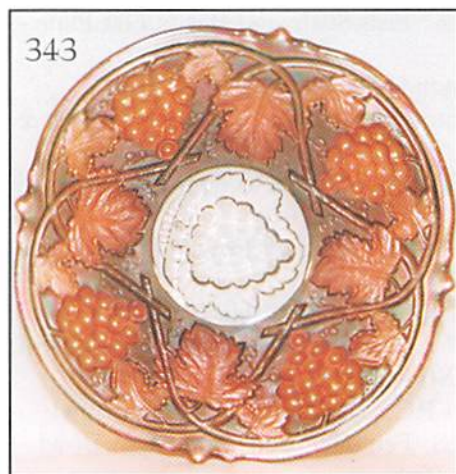
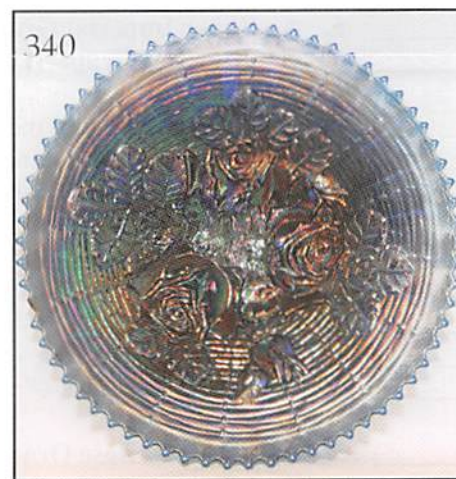
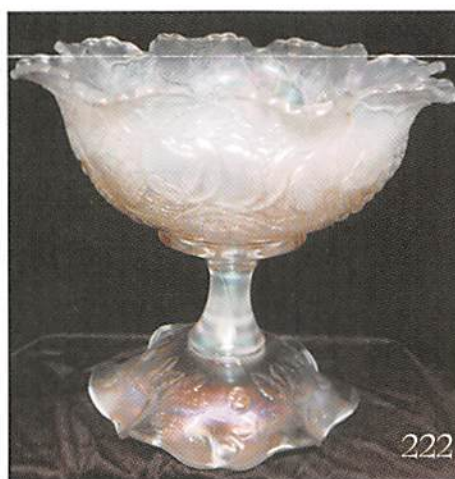
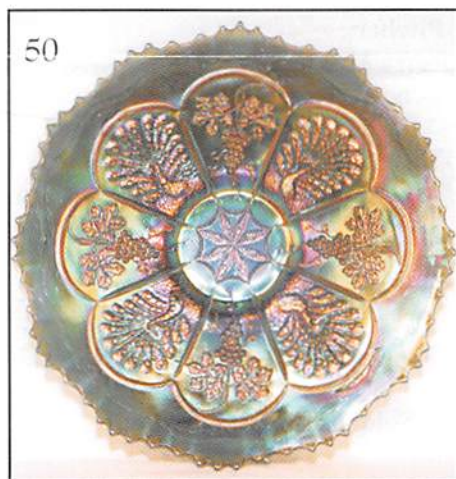
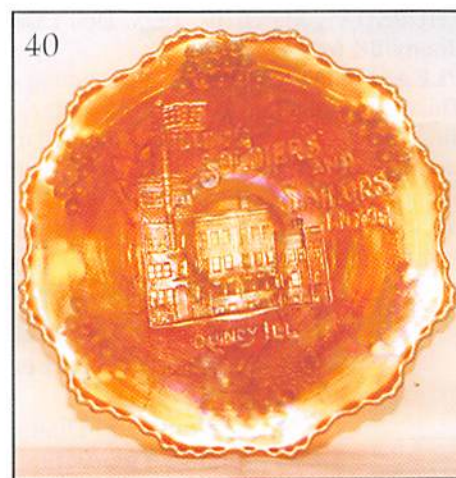
CARNIVAL GLASS AUCTION



Saturday, March 21, 1998 - 9:30 a.m.

Held Inside the Mickey Reichel Auction Center

Office: 660-882-5292 • Boonville, Missouri • Home: 660-882-5283



NO BUYERS PREMIUM

Held Inside the Mickey Reichel Auction Center

1 Mile North of I-70 on Hwy. 5, Exit 101, Boonville, Missouri • 20 Miles West of Columbia, MO on I-70
Preview Friday 12 p.m. - 6 p.m. and 7:30 a.m. - 9:30 a.m. Day of Auction


Make Reservations **NOW** at one of these local motels:


Days Inn: 660-882-8624 • Comfort Inn: 660-882-5317 • Super 8: 660-882-2900

Auction Consists of Rarity, Great Irid. and Variety

WRITE IN BIDS: If you are unable to attend the auction, we will be happy to accept absentee bids which must be received by THURSDAY, March 19, 1998. Don't Delay. **FOR AUCTION PRICE RESULTS:** Send S.A.S.E and \$3.00 to 516 Third Street, Boonville, MO 65233.

PLEASE NOTE: There is a \$5 handling charge for each successful bid which will be added to the selling price for all write-in bids. This is in addition to the cost of postage, insurance and packing. Your write-in bid will be entered just as if you are present and bidding. Successful bidders will be notified in 1 to 3 days by the auctioneer (so be sure to include your phone number). Direct mail bids to Auctioneer Mickey Reichel, 516 Third Street., Boonville, MO 65233-1536. Terms: Cash or Check accepted with proper I.D. and Social Security Number and References. Announcements made day of the auction supercede all printed material. Not Responsible for Accidents or Sold Items. No return on any items once they leave the Auction Center (No Exceptions).****

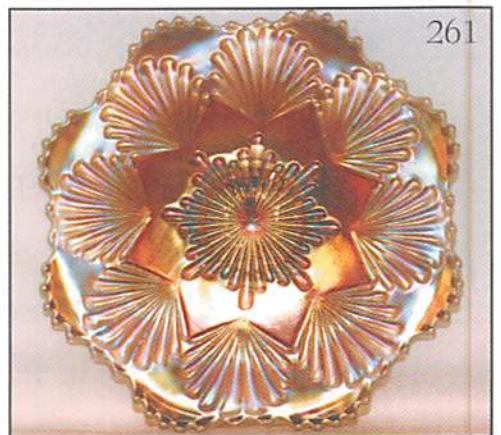
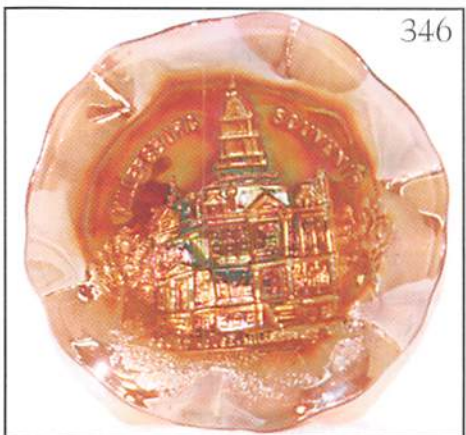
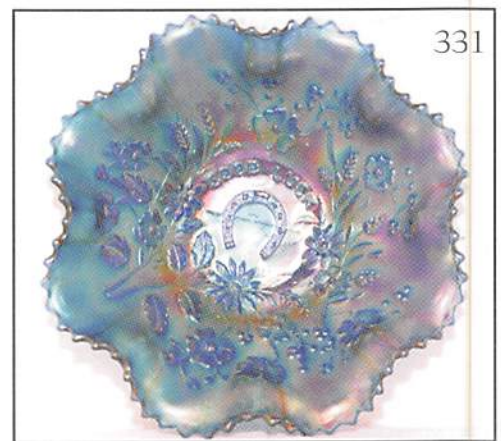
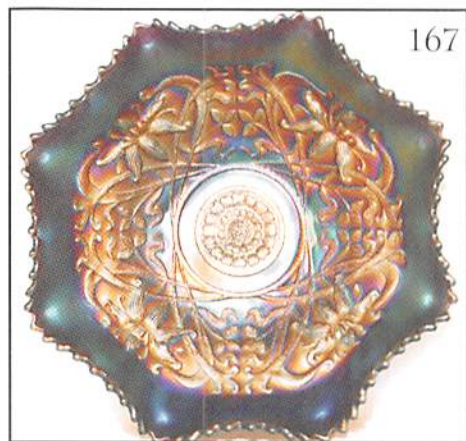
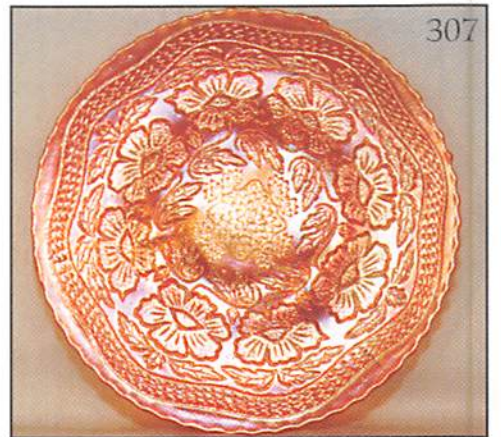
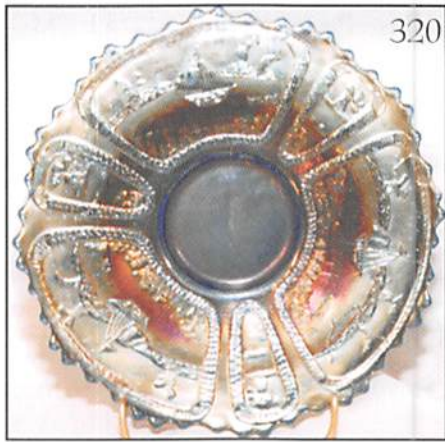
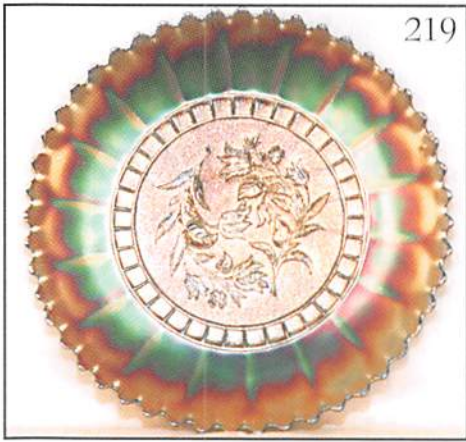
 Call for additional information: 660-882-5292 days or 660-882-5283 evenings.

 FAX: 660-882-5292 (evening hours start FAX transmission after beep)

 **NOTE: Read each line, Bold and Plain print. Huge Quality Selection.**

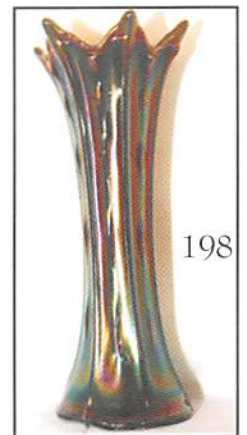
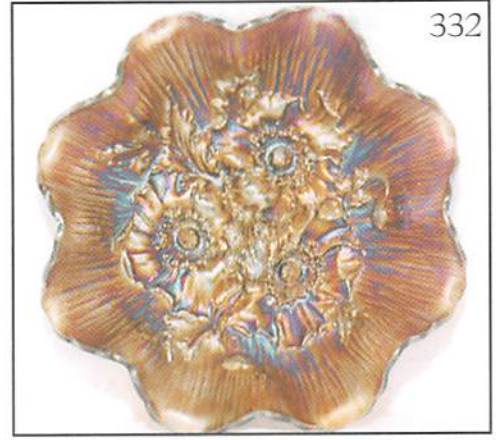
- | | |
|--|--|
| _____ 1. M - Sunburst and Diamond Wines - 3 x \$ | _____ 28. M - Grape Arbor Tankard - Crack Along Handle |
| _____ 2. M - Orange Tree Wines - 3 x \$ | _____ 29. M - 6 Grape Arbor Tumblers - 6 x \$ |
| _____ 3. M - Golden Harvest Wines - 3 x \$ | _____ 30. M - Rare 8½" Tall Imperial Flute and Cane - Water Pitcher |
| _____ 4. M - Sailboat Wines 2 x \$ - Scarce | _____ 31. G - Raspberry Milk Pitcher |
| _____ 5. A - Super Imperial Grape Wine | _____ 32. M - 6½" Persian Garden Plates - A, B or C |
| _____ 6. G - Imperial Grape Wine Vt. - Rib Int. Pl. Bottom | _____ 33. P.O. - 6½" Four Flowers Plates - A, B or C |
| _____ 7. G - Imperial Grape Wine | _____ 34. VAS. - 6" Persian Medallion Plate - Rare |
| _____ 8. M - Imperial Grape Wine | _____ 35. A - 6½" Persian Medallion Plate - Also Rare |
| _____ 9. M - Octagon Wine - Dark Radium | _____ 36. M - 6" Persian Medallion Plate |
| _____ 10. Smoke Blue - Wine and Roses Wine | _____ 37. B - 6" Pine Cone Plate - Great Example - 12 Sided |
| _____ 11. M - Stippled Ivy Wine, Souvenir of Columbus, Ohio 1912 | _____ 38. M - 6¼" Pine Cone Plate - Pinks & Blues - 12 Sided |
| _____ 12. A - Beaded Shell Mug | _____ 39. B - Illinois Soldiers and Sailors Plate - Rare & Beautiful |
| _____ 13. Dark M - Robin Mug - Great One | _____ 40. M - Illinois Soldiers and Sailors Plate - Also Rare |
| _____ 14. Amberina Pastel 2½" Base Orange Tree Mug | _____ 41. P.M. - 7¼" Fish Scale and Beads Flat Plate - Beauty |
| _____ 15. Dark A - 2½" Base Orange Tree Mug - Very Rare Color | _____ 42. W - Fenton Holly Plate - Frosty |
| _____ 16. Aqua - Saph. Base, 2½" Base Orange Tree Mug - Also Rare | _____ 43. M - Fenton Holly Plate - Stretch - Pink & Golds |
| _____ 17. B - 3" Base - Orange Tree Mug | _____ 44. P.M. - Fenton Peacock at Urn Plate - Satin Blues & Pinks - Beauty |
| _____ 18. B - 2½" Base - Orange Tree Mug | _____ 45. W - I.C.S. - 8" Fanciful Bowl - Super Blues & Pinks |
| _____ 19. M - 3" Base - Orange Tree Mug | _____ 46. M - 8½" N Grape and Cable B.W. Plate |
| _____ 20. White - Singing Birds Mug - Very Rare Color | _____ 47. M - 10" Acanthus Chop Plate - Beautiful Multi - Stretch Irid. |
| _____ 21. G - Singing Birds Mug - Scarce Color | _____ 48. Rich M - P.C.E. Good Luck Rib Bk. Bowl |
| _____ 22. P - Singing Birds Mug - Dark Multi | _____ 49. M - I.C.S. Fenton Peacock and Urn Bowl - Blues & Pinks |
| _____ 23. M - Singing Birds Mug - Dark Rich Irid. | |
| _____ 24. M - Fishermans Mug - Dark From Presznick Museum | |
| _____ 25. P - Fishermans Mug - Very Nice | |
| _____ 26. P - N Grape and Cable Water Pitcher | |
| _____ 27. M - Oriental Poppy Tankard - Dk. Top - Lite Base | |

- _____ 50. **Rare Elec. Blue - 9½" Collar Base Peacock and Grape Plate - Super**
- _____ 51. B - I.C.S. Fenton Peacock and Urn Bowl - Great Multi Satin
- _____ 52. M - 8" Imperial Heavy Grape Plate - Frosty Pinks & Blues
- _____ 53. B - 5½" N Peacock and Urn I.C.S. Sauce
- _____ 54. **W - Palm Beach Spooner - Rare and Beautiful**
- _____ 55. **W - Fenton Peacock and Urn Ruffle Compote - Rare Beauty**
- _____ 56. B - P.C.E. Good Luck Rib Bk. Bowl - Striking Multi Irid.
- _____ 57. M - Pastel Stippled Rib Bk. Good Luck Bowl - Very Pretty & Scarce
- _____ 58. M - N Good Luck Vt., B.W. Bowl - Scarce - Less Berries
- _____ 59. M - Fenton Ruffled Peacock and Urn Bowl - Nice One
- _____ 60. P.M. - Ruffled Rose Show Bowl - Blues, Pinks & Golds
- _____ 61. W - Double Star Cruet, Crider Iridised - Rare
- _____ 62. **B - God and Home Tumbler - Rare**
- _____ 63. M - Springtime Tumbler - Base Roughness
- _____ 64. **W - Dahlia Tumbler Rare**
- _____ 65. B - Stork & Rushes Tumbler - Beaded Radium
- _____ 66. **G - Springtime Tumbler - Radium Very Difficult to Find**
- _____ 67. P - N Dandelion Pl. Int. Tumbler - Multi Elec.
- _____ 68. P - N Springtime Tumbler - Rare Beauty - Base Nicked
- _____ 69. P - Elec. Radium Field Flower Tumbler
- _____ 70. Honey Amber - Cosmos Cane Tumbler
- _____ 71. P.M. - **Jeweled Heart Tumbler - Very Scarce**
- _____ 72. M - Blackberry Block Tumbler - Nice One
- _____ 73. **G - N Wishbone Tumbler - Rare Find**
- _____ 74. P - Imperial Elec. Radium Windmill Tumbler - Base Nick - SO
- _____ 75. Red Amy - Circle Scroll Tumbler - Rare - Sm. Flake on Side
- _____ 76. **W - Rare Apple Tree Tumbler - Frosty**
- _____ 77. P - Acorn Burr Tumbler - Old Favorite
- _____ 78. **B - Ruffle Top Orange Tree Punch Bowl & Base - Super Pretty**
- _____ 79. M - Round Flared Orange Tree Punch Bowl Base & 6 Cups - Scarce
- _____ 80. M - N Peacock at Fountain Punch Bowl & Base - Base Nick on Top
- _____ 81. **M - Radium Quill Water Pitcher - Rare in Any Color**
- _____ 82. **Vas. - Scale Band Imperial Water Pitcher - Only One Known**
- _____ 83. **W - Orange Tree Whimsey Cr. from Punch Cup - 1 of 2 Known**
- _____ 84. P - N 3 Fruits B.W. Back Plate - Thick Stretch Irid.
- _____ 85. M - N Smooth Back Three Fruits Plate - Pretty Plate
- _____ 86. Bluish Purple - Dragon & Lotus 8 Ruffle Bowl - Neat Color
- _____ 87. **Amber - Dragon & Lotus 8 Ruffle Bowl - Scarce Color**
- _____ 88. P.M. - Mlbg. Satin 9½", I.C.S. Peacock and Urn Bowl
- _____ 89. **G - Mlbg. Radium 8 pt. Star Grape Wreath Vt. Bowl - Bluish Irid.**
- _____ 90. A - Mlbg. Radium 6¼" - 3 in 1 Blackberry Wreath Bowl
- _____ 91. **A - Mlbg. Radium 5½" I.C.S. Clover Vt. Center Wreath Bowl**
- _____ 92. **A - Mlbg. Radium 6¼" 6 Ruffle Peacock Bowl - No Bee - 8 Tail Feathers**
- _____ 93. Smoke - 10" Gothic Arches Super Radium Vase - 8" Top - 1" Heat Check In Side
- _____ 94. A.O. - Daisy and Drape Vase
- _____ 95. A.O. - Four Pillars Vase - Super, Toe Flake - Normal
- _____ 96. M - 5½" Drapery Morning Glory Vase - Super Radium
- _____ 97. **Rare - Radium M - Frosted Band Vining Leaf Vase - 6"**
- _____ 98. P - 13" Morning Glory Vase - 4⅞" Base, 10" Top - Super - Base Chips - Beautiful Vase
- _____ 99. M - N Mid Size Tree Trunk Vase - 4¾" Base - 6" Opening
- _____ 100. **M - 5¼" Base, Dia. & Rib Funeral Vase - 9" Flared Top - Super Rarity**
- _____ 101. Lav. - Mlbg. Holly Sprig Deep Bon Bon - Rare Color
- _____ 102. A - 7½" C.R.E. Holly Sprig Bowl - Radium Mlbg.
- _____ 103. G - 7", 3 in 1, 6 Ruffle Holly Sprig Bowl - Radium Mlbg.
- _____ 104. M - 6" Mlbg. 3 in 1, 6 Ruffle Holly Sprig Bowl - Radium Rarity
- _____ 105. M - 8½" Mlbg. 6 Ruffle C.R.E. Grape Wreath Vt. Bowl w/ 8 pt. Star
- _____ 106. **M - 9½" Mlbg. - Square Radium, Rays & Ribbons Bowl - Rare Shape**
- _____ 107. **A - Dark 9¼" Mlbg. 2 in 1 Ruffle Radium Rays & Ribbons - Beauty**
- _____ 108. M - Mlbg. 9½" Rays & Ribbons Bowl - Flared w/12 Scallops - Scarce Shape
- _____ 109. P.M. - Mlbg. 9½" 6 Ruffle Zig Zag Bowl - Radium Blues & Pinks
- _____ 110. G - Super Radium 6 Ruffle Boutonniere Compote - Mlbg.
- _____ 111. G - Mlbg. Radium 6 Ruffle Peacock Tail Var. Compote
- _____ 112. **A - Mlbg. Radium 6 Ruffle Peacock Tail Var. Compote - Super**
- _____ 113. M - Mlbg. 6 Ruffle Peacock Tail Var. Compote - Radium Gold
- _____ 114. **Blue - Mlbg. RARE Roses & Fruits Bon Bon (Possibly 1 of a Kind)**



- _____115. M - 6" Plain Panels Plate
- _____116. M - 7" Grape Vine Lattice Plate - Extra Nice
- _____117. P.O. - 6½" Four Flowers w/B.W. Back - Scarce Plate
- _____118. **P - 6½" Near Elec. Petal and Fan C.R.E. Plate - Super Find**
- _____119. **W - 6¾" Persian Garden Plate - Pool of Pearls Rev. - Very Scarce**
- _____120. P. - 6½" Wishbone and Spades Plate - Very Desirable - Pl. Bk.
- _____121. **P.O. - 6½" Wishbone and Spades Plate - Pl. Bk. - Very Rare**
- _____122. P.O. - 7¼" Tri-Corner Beads and Flowers Pl. Front Plate
- _____123. **M - Pumpkin 7" Stippled Rays Scale Band Ext. Plate - Super**
- _____124. M - 7" Imp. Three in One Plate - Pl. Front - Beauty
- _____125. M - 6½" Imp. Grape Plate - Becoming Very Popular
- _____126. **M - 6½" Super Peacock Tail Plate - Great One - Dark & Rare**
- _____127. P.M. - Whimsey Grape and Cable Hat From Tumbler - Radium
- _____128. **A - Stork and Rushes Hat Whimsey from Tumbler - 2 Sides Up**
- _____129. M - N Whimsey Grape Arbor Ruffle Hat from Tumbler - Great
- _____130. M - Floral and Grape J.I.P. from Tumbler - Radium
- _____131. P.O. - 6" J.I.P., C.R.E., Dugan Whimsey Vase - Ribbed Ext.
- _____132. **I.G. - J.I.P. Rose Spay Compote - Glows Wild Under Black Lite**
- _____133. Clam - Frosted Block Creamer
- _____134. **P - Hobstar Creamer - Tough to Find and Pretty**
- _____135. **A - Rare Stork & Rushes Creamer - Super Radium**
- _____136. B - Grape and Gothic Arches Creamer - Pretty
- _____137. **M - Rare Near Cut Inverted Feather Creamer - Very Nice**
- _____138. M - Mlbg. Hanging Cherries Creamer - Also Rare Find
- _____139. M - Hobstar Creamer - Nice Example
- _____140. M - Star and File Creamer
- _____141. M - Lea Ball FTD Creamer
- _____142. M - Long Thumb Print Creamer
- _____143. **G - Peacock Tail Creamer - Shaped Like Orange Tree - Rare**
- _____144. B - Orange Tree Orchard Tumbler - Super Color - Sm. Base Nick
- _____145. **B - Mlbg. Hobnail Tumbler - Super Rare - Factory Ground Base**
- _____146. B - God and Home Tumbler - Great Find
- _____147. **B - Grape Arbor Tumbler - Rare and Pretty Color**
- _____148. P - Chatelaine Tumbler - High Collectors Rating
- _____149. **A - Perfection Tumbler - Mlbg. Rarity**
- _____150. P - Imp. Tiger Lily Tumbler - A Super Beauty
- _____151. **B - Rare Lily of Valley Tumbler - Small Base Nick - No Harm**
- _____152. M - Orange Tree and Scroll Tumbler - Scarce Beauty
- _____153. M - Springtime N Tumbler - Great Find
- _____154. M - Mlbg. Marilyn Tumbler - Difficult Find
- _____155. **M - Rare Quil Tumbler - Super Color - Tiny Base Nick - No Harm**
- _____156. **M - Jeweled Heart Tumbler - Quite Scarce**
- _____157. M - Wishbone Tumbler - Scarce
- _____158. **VAS. Topaz - Concave Diamond Tumbler - Super Rare Beauty**
- _____159. M - Harvest Flower Tumbler - Manuf. Base Bruise ? - Rare
- _____160. **G - Mlbg. Marilyn Tumbler - Quite Rare**
- _____161. B - Blackberry Block Tumbler - Scarce
- _____162. **G - Blackberry Block Tumbler - Very Scarce Color**
- _____163. **P.M. - Palm Beach Tumbler - Super Irid.**
- _____164. A - Fluffy Peacock Tumbler - Scarce Color
- _____165. P.O. - 10½" Petal and Fan 6 Ruffle Bowl - Jewel Heart Ext. - Fine Example
- _____166. P.O. - 11" 8 Ruffle Ski Star and Compass Bowl - Beautiful - Scarce Shape
- _____167. **P - 10" 8 Ruffle Wishbone Bowl - Plain Ext. - Multi Elec. - Scarce**
- _____168. P.O. - Dugan Holly and Berry Sauce Boat - Lots Opal
- _____169. P.O. - 6 Ruffle Dugan Bells and Beads Bowl
- _____170. **Rare Rare - P - Pair Imperial Six Sided Candle Sticks**
- _____171. P.O. - A or B Small Stemmed Sherbets or Mini Compotes - ? Pattern
- _____172. M - 6 Ruffle Kittens Bowl
- _____173. **M - Kittens Plate - Rich Dark Irid**
- _____174. M - Kittens Toothpick or Mini Vase
- _____175. M - Kittens 4 Ruffle Bowl
- _____176. **M - Kittens 2 Sides Up Banana or Card Tray**
- _____177. M - Kittens Cup
- _____178. **Teal G - Little Barrel Miniature - Glows - Nice Irid**
- _____179. M - Intaglio Nut Cup or Compote - Base Chip
- _____180. **P - N Near Cut Rare Goblet**
- _____181. G - N Double Loop Sugar Bowl - Rare Color
- _____182. P.M. - Grape and Cable Small Pin Tray - Very Desirable
- _____183. Super Radium M - Scroll Embossed Compote - Chipped
- _____184. M - Grape and Cable Cup & Saucer
- _____185. P - Grape and Cable Cup & Saucer
- _____186. **Red - Peacock Lamp Base - A Rare Beauty**
- _____187. **Pastel A.O. - Round Bushel Basket - Nice Find**

- _____ 188. B - Round N Bushel Basket
 _____ 189. P - Round N Bushel Basket - Dark
 _____ 190. M - Round N Bushel Basket - Very Pretty
 _____ 191. **Rare** Lav. A - 6¼" Mlbg. Flat - Peacock an
 Urn Small Mold Plate
 _____ 192. M - 7¾" Peacock and Dahlia Plate - Also
 Rare
 _____ 193. M - Rare - Little Flowers 6¼" Plate -
 Stretch Irid - A Beauty
 _____ 194. P.O. - A or B, Four Flowers 6½" Plates - Pl.
 Ext.
 _____ 195. M - A or B, Persian Garden 6½" Plates - Bw.
 Ext.
 _____ 196. BA - 8¼" Lined Lattice Vase - Super Multi
 Elec. - Small Base Chip
 _____ 197. B - 5½" J.I.P. Vase - Fenton - Gorgeous Vase
 _____ 198. P - 10½" Super Elec. Target Vase
 _____ 199. Violet P - 13¼" Morning Glory Funeral Vase
 - 8¼" Top - Super Item
 _____ 200. M - Dark Plain Base Corn Vase - Very
 Scarce & Nice
 _____ 201. M - 6¾" Very Rare Nautilus Vase - A
 Beauty
 _____ 202. M - 6" Squatty Palm Beach Vase - Very
 Rare & Beautiful - Goofus
 _____ 203. M - 7" Stemmed Question Mk. Plate -
 Georgia Belle Ext. - Scarce
 _____ 204. W - 5¾" Round Question Mk. Compote -
 Georgia Belle Ext. - Rare Beauty
 _____ 205. A - 9" Plain No Pattern N B.W. Ext. Plate -
 Pretty One
 _____ 206. A - 8½" Wishbone FTD Plate - Always in
 Demand
 _____ 207. G - N 9" Grape and Cable B.W. Ext. Plate -
 Nice Find
 _____ 208. B - 9" Dugan Blue Flat Round-Up Plate -
 Multi Irid.
 _____ 209. W - 8¾" Round Deep Rose Show Bowl -
 Rare Frosty Shape
 _____ 210. B - 9½" Fenton Holly Plate - Multi Satin Irid
 - Extra Nice
 _____ 211. W - Ruffle Rib Bk. Hearts and Flowers Bowl
 - Frosty Soft Blues
 _____ 212. P.O. - 9" Northwoods Strawberry Plate - 1
 of 3 Offered at Auction - **Rare**
 _____ 213. M - 9½" Flat N Greek Key Plate - Very
 Scarce & Nice
 _____ 214. G - P.C.E. Good Luck B.W. Ext. Bowl -
 Great - Rare Back Pattern for P.C.E.
 _____ 215. B - P.C.E. Good Luck Rib Back Bowl - Multi
 Elec.
 _____ 216. B - Fenton 9½" Orange Tree Plate - Multi
 Elec.
 _____ 217. M - 9½" Orange Tree Plate - Pinks, Blues
 & Yellow Golds - Super
 _____ 218. W - 9½" Poppy Show Plate - Frosty w/Nice
 Hi-lites
 _____ 219. B - 9" Dugan Wind Flower Plate - Rare -
 Pretty Plate
 _____ 220. M - 9" Dugan Wind Flower Plate - Nice Gold
 & Silver Irid.
 _____ 221. M - Rare Mlbg. Multi Fruits & Flowers 8
 Pc. Punch Set
 _____ 222. W - Rare Dugan Many Fruits Punch Bowl
 w/Ruffle Base - Super Pretty
 _____ 223. A - Vintage Int. - Wreath Roses Ext. 8 Pc.
 Punch Set - Great Find
 _____ 224. M - Dark Top to Bottom Scarce Orange Tree
 Orchard Water Pitcher
 _____ 225. M - Orange Tree Orchard Tumbler
 _____ 226. G - Double Star Tankard Water Pitcher -
 Very Scarce Beauty
 _____ 227. G - Double Star Tumbler
 _____ 228. B - Ten Mums Tankard & 4 Tumblers -
 Rare Find
 _____ 229. M - Memphis 8 Pc. Fruit Set - Super Set
 _____ 230. P - Memphis 8 Pc. Fruit Set - Great Pattern
 _____ 231. Rare - Cherries Hat Pin
 _____ 232. Elegance Vt. Hat Pin - Scarce
 _____ 233. Elegance Hat Pin
 _____ 234. Star Center Vt. Hat Pin - Scarce
 _____ 235. Star Center Hat Pin
 _____ 236. Basket Flower Hat Pins - A or B
 _____ 237. Basket weave Hat Pin - Elec.
 _____ 238. Black Suns Up No Irid Hat Pin
 _____ 239. Choice A or B - Pattern Unknown - No Irid.
 Hat Pins
 _____ 240. P - Imperial Grape Decanter & Stopper-
 Fabulous
 _____ 241. G - Imperial Grape Wine Set - 8 Pc.
 _____ 242. P.M. - Grape and Cable Cologne Bottle &
 Stopper - Nice Item
 _____ 243. I.G. - Swan Salt
 _____ 244. P - Swan Salt - Very Rare - Base Crack
 _____ 245. Olive Green - Mlbg. Nite Stars Bon Bon -
Super Color - Super Rare
 _____ 247. A - Super Radium Mlbg. Leaf and Little
 Flowers Rd. Compote
 _____ 248. M - Mlbg. Holly Sprig Tri-Corner Nappy -
 Radium Rarity
 _____ 249. A - Mlbg. Holly Sprig Card Tray Bon Bon -
 Gorgeous Irid.
 _____ 250. A - 7" I.C.S. Mlbg. Hanging Cherries Bowl -
 Beautiful Piece
 _____ 251. A - Mlbg. 10" Ruffle Many Stars Bowl -
 Radium - Cracked
 _____ 252. M - Mlbg. 10", 3 in 1, 6 Point Many Stars
 Bowl
 _____ 253. M - Mlbg. 8½", 3 in 1 Grape Wreath Vt.
 w/8 Pt. Star - Radium
 _____ 254. M - Mlbg. I.C.S. 8½" Trout and Fly -
 Radium Rarity
 _____ 255. M - Mlbg. 9", 3 in 1 Trout and Fly - Satin
 Finish
 _____ 256. M - N Flute Butter Dish & Lid - Very Rare
 _____ 257. M - N Rare Flute 7 Pc. Salt Dip Set - Great
N Find and Pretty
 _____ 258. M - 8¼" Imperial Grape Plate - Whimsey
 Flared Edge - Beautiful



- _____ 259. M - 8" Beautiful Zipper Loop Lamp w/4 3/4" Base w/Chimney
- _____ 260. A - Lg. Scroll Embossed Compote w/Curved Star Ext. - Radium Elec.
- _____ 261. **Smoke - 9" Shell Plate - Super Rainbow of Irid. on a Rare Find**
- _____ 262. G - Super 8" Ruffle Shell and Sand Bowl
- _____ 263. **M - Super Rare Inca Liquor Bottle and 6 Mini Glasses - 7 Pc. Set**
- _____ 264. B - Blueberry Tumbler - Very Pretty - Scarce
- _____ 265. M - Blueberry Tumbler - Dark Radium
- _____ 266. **G - Grape and Gothic Arches Tumbler - Rare Color**
- _____ 267. B - Grape and Gothic Arches Tumbler - Some Call Renninger
- _____ 268. **Lav. - N Peacock at the Fountain Tumbler - Rare**
- _____ 269. M - N Peacock at the Fountain Tumbler - Super
- _____ 270. M - N Grape Arbor Tumbler - Rich & Dark
- _____ 271. M - N Oriental Poppy Tumbler
- _____ 272. M - Scale Band Tumbler - Rayed Int.
- _____ 273. **G - N Springtime Tumbler - Great Rarity**
- _____ 274. B - Milady Tumbler - Multi Elec.- Scarce
- _____ 275. P - Imp. Lustre Rose Tumbler - Rib Int. - Elec.
- _____ 276. B - Butterfly and Fern Tumbler - Factory Ground - Multi Elec.
- _____ 277. **A - Dugan Floral and Grape Tumbler - Scarce**
- _____ 278. A - Beaded Shell Tumbler - Dark Example
- _____ 279. Pastel - Smoke, Amber, Amy, ? Heavy Iris Tumbler - Very Pretty Color
- _____ 280. **A - Wreath Cherry Tumbler - Beauty - Sm. Base Chip - No Harm**
- _____ 281. P - Super Multi - Three Fruits Med. Spat. FTD Bowl
- _____ 282. M - Super 10" N I.C.S. Peacock and Urn Bowl
- _____ 283. **M - 23 1/2" - 7 1/2" Tops - 5 1/8" Bases - Rustic Funeral Vases - A or B Choice - Their Great**
- _____ 284. P - 9" Rose Show Plate - Little Deep, But Beautiful
- _____ 285. **Pastel Lav. - N Stippled Three Fruits Rib Bk. Plate - Rare Base Color**
- _____ 286. B - 9" Captive Rose Plate - Scarce and Nice
- _____ 287. G - 10 1/4" Mlbg. 3 in 1 Peacock and Urn Bowl - Satin
- _____ 288. M - Ruffled Rib Bk. Peacocks Bowl N - Super Irid.
- _____ 289. **M - Rib Bk. N Peacocks Plate - Great Pinks & Golds**
- _____ 290. **Lime I.G. - Rib Bk. N Peacocks Plate**
- _____ 291. **I.G. - Smooth Bk. N Peacocks Plate**
- _____ 292. **W - N Rib Bk. Peacocks Plate**
- _____ 293. M - Grape and Cable Whiskey Decanter - Rare Find
- _____ 294. M - 4 Grape and Cable Whiskey Shot Glasses - 4 x \$ - Dark Ones
- _____ 295. A.O. - Very Pretty - Beaded Cable Rose Bowl
- _____ 296. P - N Grape and Cable Whimsey Pin Dish from Punch Cup
- _____ 297. **P - Grape and Cable Candle Lamp - Complete - Rare**
- _____ 298. **Lav. - Rare Color Grape and Cable Sweet Meat - A Beauty**
- _____ 299. **Super - P - Grape and Cable Cracker Jar w/Lid**
- _____ 300. **B - Grape and Cable Powder Jar w/Lid - Very Rare - Minor Lid Roughness**
- _____ 301. P - Grape and Cable Powder Jar w/Lid - Pretty One
- _____ 302. M - Low Ruffle Radium Fanciful Plate or Bowl
- _____ 303. P.M. - Opal Edge Westmoreland Carolina Dogwood Bowl
- _____ 304. **Dark, Rare - M - Regal Cane 8 1/4" Tall Tankard Shape Pitcher**
- _____ 305. M - 6 1/4" Persian Garden Plate - Lots of Irid.
- _____ 306. M - 6" Super Radium Pl. and Waffle Block Plate
- _____ 307. **M - Rare Spat. Ft. Two Flowers 9 1/4" Flat Plate - Pink & Bl. Irid.**
- _____ 308. M - 4 3/4" Jewels Ruffle Top Vase
- _____ 309. W - 5 1/2" RFLD. Dome FTD Smooth Stretchy Vase
- _____ 310. **P - Wishbone and Spades Chop Plate - Great Find**
- _____ 311. Persian Blue or B.O. - #270 Pattern Compote - Marigold Irid. - Rare - Very Pretty
- _____ 312. M - Dark - Strawberry Bon Bon - Very Pretty Example
- _____ 313. **M - 9 7/8" Rare - Rare Field Thistle Flat Plate or Chop Plate - Radium**
- _____ 314. Dark - M - Ruffle Peacock Tail Compote - Nice One
- _____ 315. P.O. - One of the Best Honey Comb Rosebowls
- _____ 316. B - Ruffle Concord Bowl - Rare Color
- _____ 317. M - Rd. Deep Concord Bowl - Unusual Shape
- _____ 318. B - 7 1/2" Radium Fenton Vintage Plate - Extra Nice
- _____ 319. G - 7 1/2" Radium Fenton Vintage Plate - Extra Nice
- _____ 320. **B - Rare Find - Flat 6 1/2" Sail Boats Plate**
- _____ 321. **M - Harvest Poppy Ruffled Compote**
- _____ 322. **M - Imperial Grape Cup & Saucer w/Turned Edge - Beautiful Set**
- _____ 323. **W - Palm Beach Rose Bowl w/Gooseberry Int. - Very Scarce**
- _____ 324. P - 6 1/4" Smooth Rays and Jeweled Heart Plate - C.R.E.
- _____ 325. **P.O. - 7" Honeycomb w/Beads and Flowers Ext. - C.R.E. - A Beautiful Plate**
- _____ 326. **P.O. - 6 1/2" C.R.E. Ski Star & Compass Plate - Great Rarity**
- _____ 327. M - 7 1/4" Horse Medallion Plate - Soft Blues & Pinks - Nice

- _____ 328. B - Poppy Pickle Dish - Beautiful Multi. Irid.
- Has Chipped Edge
- _____ 329. P - N Drapery Candy Dish - Super Multi Elec.
Find
- _____ 330. **B - Rare Color - 9" N Grape and Cable
Stippled Rib Bk. Plate - 1 Grape Small
Nick**
- _____ 331. **Super Elec. - B - Ruffled Rib Bk. Good
Luck Bowl**
- _____ 332. P - Ruffled N Poppy Show Bowl - Beautiful
Multi Irid.
- _____ 333. Beautiful - P.M. - N Ruffle Poppy Show Bowl
- Mold Separation on Edges
- _____ 334. **M - Poppy Show 9 1/4" Plate - Pinks, Blues
and Golds - Hot Item**
- _____ 335. Super Pretty - P.M. - Circle Scroll Whimsey -
J.I.P. Hat Shape
- _____ 336. **Vas. I.G. - 7" Square O.E. Basket weave
Bowl - Rare Shape & Color**
- _____ 337. A - I.C.S. 8" Orange Tree Bowl - Rare Color
& Shape
- _____ 338. P - Scroll and Embossed Multi Elec. Plate
- _____ 339. **Saph. - Leaf & Beads Smooth Int. Rose
Bowl - Rare Base Color**
- _____ 340. **B - 8 3/4" Rose Show Vt. Plate - Super Pretty
- Buffed Tooth - No Harm - Very Rare**
- _____ 341. B - Dugan 9" Radium Apple Blossom Twig
Plate - B.W. - Super
- _____ 342. M - Homestead Chop Plate - Thick Stretch
Irid.
- _____ 343. **M - and Goofus 7" Palm Beach Plate -
Maybe 1 of a Kind - Super Neat**
- _____ 344. **W - Flat Fanciful Plate - Frosty Pinks &
Blues - Great**
- _____ 345. B - Flat Fanciful Plate - Super Multi Satin
- _____ 346. **A - Ruffled Mlbg. Courthouse Bowl -
Super Radium**
- _____ 347. P.O. - 9 1/4" Pulled Loop Vase - Base Chip -
Lots of Opal
- _____ 348. P - Grape and Cable Hat Pin Holder - Good
Feet
- _____ 349. P - Circle & Scroll Sugar Bowl - No Lid
- _____ 350. P - N Acorn & Burr Sugar Bowl - No Lid
- _____ 351. M - Vase 4 1/4" Tall, 6" Wide w/6 Ruffles and
Rib Int. - 12 Pt. Star Base?
- _____ 352. Clear - 1909 Louisville Shriners Champagne
- _____ 353. Clear - 1910 New Orleans Shriners
Champagne
- _____ 354. Clear - 1911 Rochester Shriners Champagne
- _____ 355. P - Imperial Grape Carafe - Multi Super Elec.
- Heat Ck. Base
- _____ 356. G - N Acorn Burrs Punch Cups (4) - 1 Cracked -
3 x \$ (1 Free)
- _____ 357. M - Quill Tumbler - Rare & Super - Base
Chip
- _____ 358. P - Quill Tumbler - Rare & Super - Base Chip
- _____ 359. M - Acorn Burr Tumbler - Super Color - Base
Chip
- _____ 360. M - Milay Tumbler - Super Example - Base
Chip
- _____ 361. B - Butterfly & Berry Tumbler - Great Color
- Base Chip
- _____ 362. M - Beaded Shell Tumbler - Radium - Base
Chip
- _____ 363. P - N Rib Int. Dandelion Tumbler - Super -
Rim Minor Nick
- _____ 364. M - Strawberry Scroll Tumbler - Rare - Base
Bruised
- _____ 365. Clear - 1909 Shriners Champagne - Base
Crack
- _____ 366. Clear - 1909 Shriners Champagne - Base
Chip
- _____ 367. G - 6" Mlbg. Cosmos - Slight Turned Up
Edge - Rare Plate - Super Radium w/Crack

Approximately 60 pcs. Unnumbered Sold at End of Catalog

THANK YOU
WE APPRECIATE YOUR BUSINESS!
BOTH BUYER AND SELLER
"GLASS ATTRACTS CLASS"

OUR 1998 EARLY BIRD
CARNIVAL CALENDAR
HELD AT THE MICKEY REICHEL
CARNIVAL GLASS AUCTION CENTER
BOONVILLE, MISSOURI -
THE CENTER OF THE U.S.A.

APRIL 10 & 11, 1998
MR. AND MRS. DAVE BURTON, COLLECTION OF S.D.
MAY 15 & 16, 1998
PRIVATE COLLECTION FROM EUROPE
SEPTEMBER 19, 1998
MR. AND MRS. JIM WELLS OF OHIO
OCTOBER 3, 1998
THE BOB WILLIAMS COLLECTION OF S.D.
JANUARY 2, 1999
8TH ANNUAL EXTRAVAGANZA
APRIL 3, 1999
JOHN MUCHLBAUER, COLLECTION OF CALIFORNIA

CALL US TODAY FOR YOUR AUCTION OF
1 PIECE OR ENTIRE COLLECTION!

Respectfully
Mickey Reichel



144 145 146 147



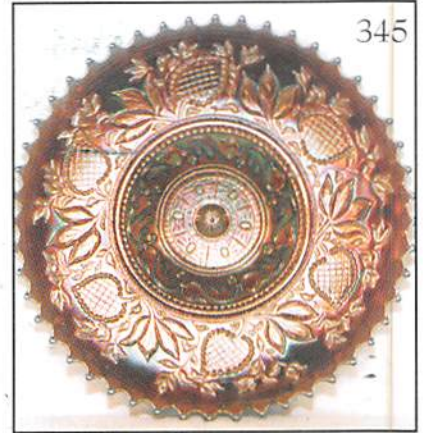
148 149 150 151



217



152 153 154 155



345

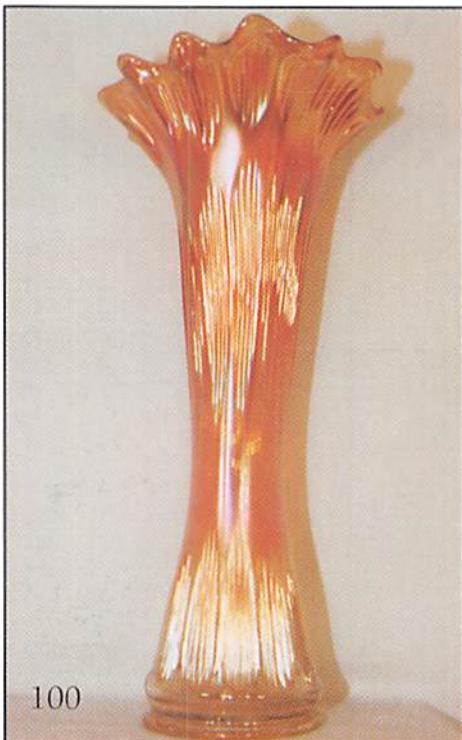


156 157 158 159

MICKEY REICHEL
AUCTION COMPANY
516 THIRD STREET
BOONVILLE, MO 65233-1536



FIRST CLASS MAIL



100

SPECIAL INVITATION TO:

