



CARNIVAL GLASS AUCTION



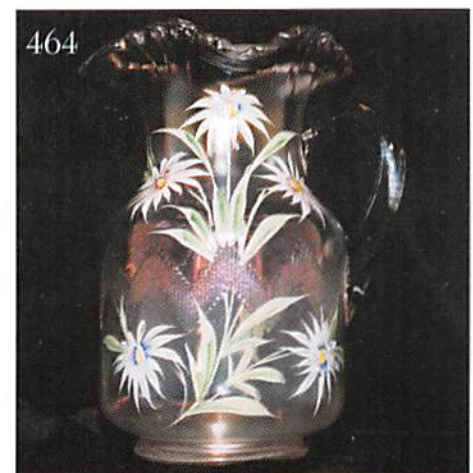
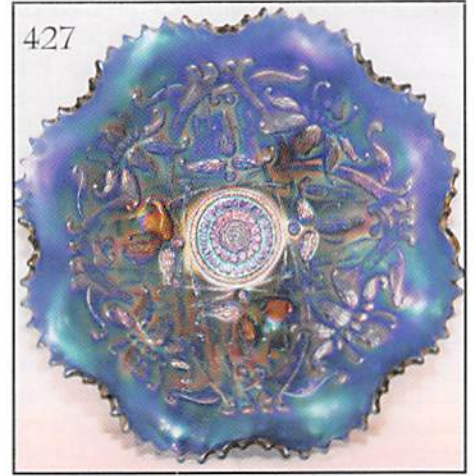
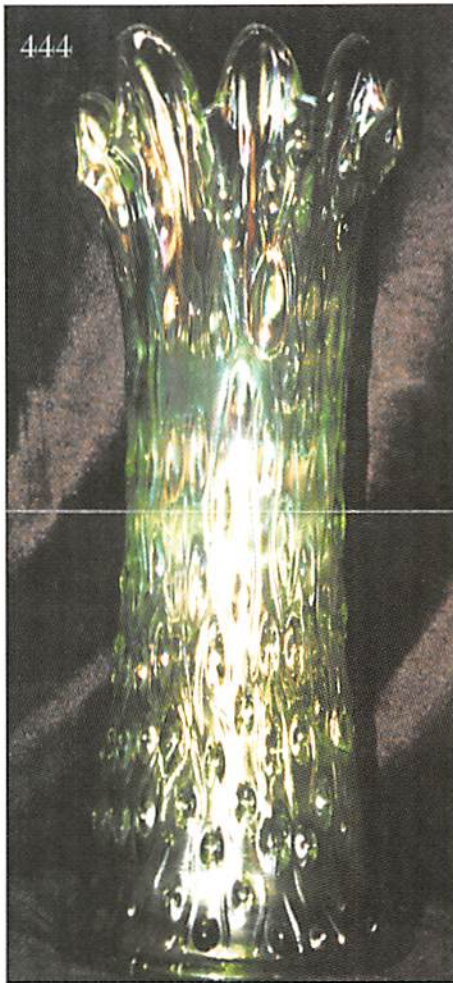
Session #1: Friday, April 10, 1998 - 6:00 p.m.

Session #2: Saturday, April 11, 1998 - 9:00 a.m.

Held Inside the Mickey Reichel Auction Center

Office: 660-882-5292 • Boonville, Missouri • Home: 660-882-5283

e-mail: mreichel@undata.com



NO BUYERS PREMIUM

Held Inside the Mickey Reichel Auction Center

1 Mile North of I-70 on Hwy. 5, Exit 101, Boonville, Missouri • 20 Miles West of Columbia, MO on I-70
Preview Friday 12 p.m. - 6 p.m. and 7:30 a.m. - 9:00 a.m. Day of Auction


Make Reservations **NOW** at one of these local motels:


Days Inn: 660-882-8624 • Comfort Inn: 660-882-5317 • Super 8: 660-882-2900

Auction Consists of Rarity, Great Irid. and Variety

WRITE IN BIDS: If you are unable to attend the auction, we will be happy to accept absentee bids which must be received by THURSDAY, April 9, 1998. Don't Delay. **FOR AUCTION PRICE RESULTS:** Send S.A.S.E and \$3.00 to 516 Third Street, Boonville, MO 65233.

PLEASE NOTE: There is a \$5 handling charge for each successful bid which will be added to the selling price for all write-in bids. This is in addition to the cost of postage, insurance and packing. Your write-in bid will be entered just as if you are present and bidding. Successful bidders will be notified in 1 to 3 days by the auctioneer (so be sure to include your phone number). Direct mail bids to Auctioneer Mickey Reichel, 516 Third Street., Boonville, MO 65233-1536. Terms: Cash or Check accepted with proper I.D. and Social Security Number and References. Announcements made day of the auction supercede all printed material. Not Responsible for Accidents or Sold Items. **No return on any items once they leave the Auction Center (No Exceptions).******

 Call for additional information: 660-882-5292 days or 660-882-5283 evenings.

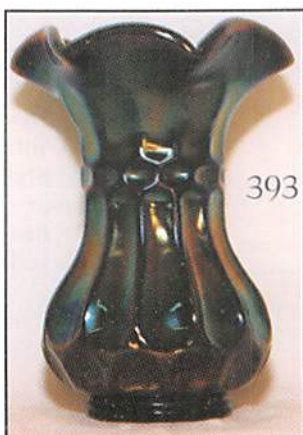
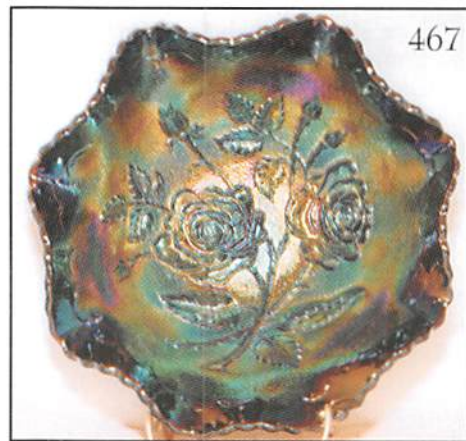
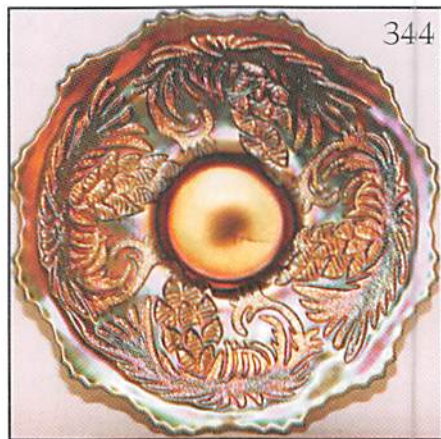
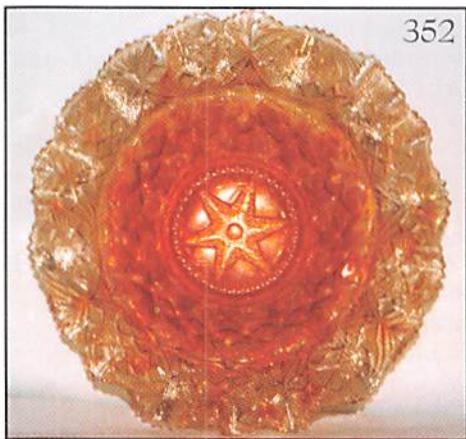
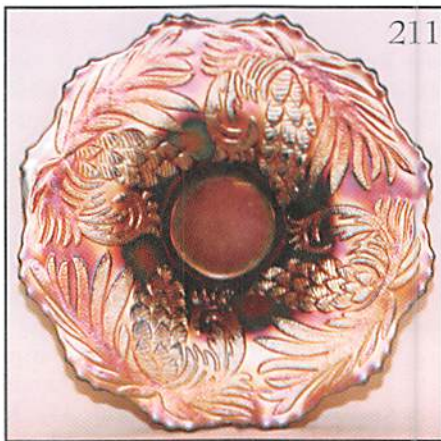
 **FAX:** 660-882-5292 (evening hours start FAX transmission after beep)

 **NOTE:** Read each line, Bold and Plain print. Huge Quality Selection.

DAY 1 - APRIL 10, 1998 - 6:00 P.M.

- | | |
|---|--|
| _____ 1. Red - 8" Contemporary I.G. Open Rose Bowl | _____ 32. Vas. - Stretch 7 1/2" Compote - Yellow |
| _____ 2. Red - 6" Contemporary I.G. Dia. Lace Rose Bowl | _____ 33. Vas. - Stretch 6 1/4" Rose Bowl - Yellow |
| _____ 3. B.O. - Hearts & Flowers Compote - Not Irid. | _____ 34. Teal - Stretch 9 1/4" Wide Panel Bowl |
| _____ 4. Amber - I.C.G.A. Paperweight | _____ 35. Teal - Stretch 11" Wide Panel Chop Plate - Super |
| _____ 5. B - Contemp. J. St. Clair Grape & Cable Tumbler | _____ 36. B.O. - Stippled 3 Fruits Ruffled Bowl - Not Irid. |
| _____ 6. B - Contemp. 1976 St. Clair Bic. Plate | _____ - Scarce |
| _____ 7. Red - Mosser Contemp. Paperweight Camb. OH. | _____ 37. Green Opal - 6 1/4" C.R.E. Jeweled Heart Plate - |
| _____ 8. Red - 1981 H.O.C.G.A. Candle Lamp | _____ Rare |
| _____ 9. P - Contemp. Fenton Owl Ring Tree | _____ 38. Crystal - Swan Salt - No Irid. |
| _____ 10. Smoke - Contemp. 9 1/4" Heavy Vase | _____ 39. B.O. - Beaded Cable C.R.E. FTD. Candy Bowl - No |
| _____ 11. Cobalt - Contemp. Dolphin Cov. Dish - Fish on Lid | _____ Irid. |
| _____ 12. Yellow Base Stretch - 6" Compote - Marigold Top | _____ 40. B.O. - Beaded Shell Jelly Compote - No Irid. |
| _____ 13. Amber Pastel - Stretch 5"-2 Sides Up Hat Vase | _____ 41. Crystal - 8 1/4", 474 Stemmed Vase - No Irid. |
| _____ 14. Crystal - 7 1/4" N Lighting Flower Tri-Corner | _____ 42. Crystal - Imp. Grape Handled Basket - 10" Tall - No |
| _____ Bowl | _____ Irid. |
| _____ 15. Celeste - 8 1/2" Pr. Florentine Candlesticks - Super | _____ 43. Crystal - <u>N</u> 8 1/4" Dome FTD. Greek Key Bowl - No |
| _____ 16. B.O. - Non-Irid. - Pastel Swan Salt | _____ Irid. |
| _____ 17. I.G. - 9 1/4" Stretch Candlestick - Glows | _____ 44. I.B. - Contemp. Panel Holly Tumbler |
| _____ 18. Celeste - Stretch 6 1/2" Plates - 2 x \$ | _____ 45. Smoke - I.G. Grape Contemp. Salt & Pepper |
| _____ 19. Celeste - 10" Blown Candlestick Vases - Pair | _____ 46. Red - I.G. Robin Mug - Contemp. - Super |
| _____ 20. Celeste - #471 Fenton Candy Jar w/Lid | _____ 47. B.A. - Fenton Alley Cat - Contemp. |
| _____ 21. W - Stretch 8" Flared Compote | _____ 48. Red - Fenton 6" Contemp. Cactus Spittoon - |
| _____ 22. I.G. - Stretch 3 1/2" Tall Candlesticks - Glows | _____ Great Item |
| _____ 23. Celeste - Stretch Candy Dish w/Lid - Enamel | _____ 49. Smoke - Contemp. I.G. 10 1/4" Homestead Plate |
| _____ Decor. | _____ 50. E.B. - Contemp. I.G. 9 1/4" Windmill Plate |
| _____ 24. M - Stretch - Beautiful Lamp Shade | _____ 51. G - Contemp. I.G. 10 1/4" MT. Rushmore Plate |
| _____ 25. Pink Stretch - 7 1/4" FTD Vase - Rolled Rim - 5 1/4" | _____ 52. Red - Contemp. I.G. 10 1/4" Capital Plate |
| _____ - Wow! | _____ 53. Ultra B - I.G. 474 Tumblers - Contemp. - 6 x \$ |
| _____ 26. Amberina - 9" Iron Cross Mk. FTD Cake Plate - | _____ 54. B - Gibon Signed Buster Bass Fish |
| _____ Lustre Rose - No Irid. | _____ 55. G - I.G. Contemp. Loganberry Vase |
| _____ 27. Celeste - #202 Fenton Ash Tray - Beauty | _____ 56. Super Red - Moon & Star Robert Hansen |
| _____ 28. Celeste - 7" - #643 Northwood Candlesticks | _____ Spooner |
| _____ 29. Vas. - Stretch - Chamber Candleholder - Super | _____ 57. Celeste - Northwood Candy Jar w/Lid |
| _____ Yellow | _____ 58. Russet - Northwood Candy Jar w/Lid |
| _____ 30. Cobalt - Contemp. I.G. Covered Candy Dish | _____ 59. Yellow Vas. - Northwood Candy Jar w/Lid |
| _____ 31. Crystal - N 11 1/2" Dia. Points Vase | _____ 60. Gilt Crystal - U.S. Mini Intaglio Nut Cup Adv. - No |
| | _____ Irid. |
| | _____ 61. I.B. - Fenton Contemp. Persian Med. Compote |

- _____ 62. Red - 7" Super Stretch Plate
- _____ **63. B.A. - 10" Super Stretch Collarbase Round Bowl**
- _____ 64. Mini - Contemp. J.I.P. Gibson Toothpick Hld.
- _____ 65. B - Contemp. S.C.G.C., S-Repeat Toothpick Hld.
- _____ 66. G - Contemp. 3 in 1 Toothpick Holder
- _____ 67. Amberina - Contemp. Bird & Rushes Tp. Hld.
- _____ **68. B - Script - Joe St. Clair Indian Tp., Contemp.**
- _____ **69. G - Bob St. Clair Owl Toothpick Holder**
- _____ 70. B - I.G. Contemp. Swan Salt
- _____ 71. Amber - I.G. Contemp. Swan Salt
- _____ **72. Cobalt - A.L.I.G. Contemp. Lustre Rose Water Set - 7 Pc.**
- _____ 73. Red Stretch - 2 Sides Up Vase - 4 3/4" Tall
- _____ 74. Red Stretch - 9 1/4" Wide Panel Bowl - Super
- _____ 75. I.B. - Contemp. Wright God & Home 7 Pc. Water Set
- _____ **76. Crystal - Mlbg. - Hobstar Giant Rose Bowl - Small Chip on Toe - Rare**
- _____ **77. Crystal - Mlbg. - 9 1/2" Ohio Star Vase**
- _____ 78. Tangerine Stretch - 3 1/2" Candlesticks
- _____ 79. Crystal - Iron Cross Mark 4" Rose Bowl - Flute?
- _____ 80. Smoke Stretch - Wide Panel Plate - 8 1/2" - Super
- _____ 81. White Stretch - Wide Panel Plate - 8 1/2" - Super
- _____ 82. Russet Stretch - Center Hdl. Serving Tray
- _____ 83. Amberina - Iron Cross Mk. 5" Nappy Pillar & Flute - No Irid.
- _____ 84. Red - Contemp. Fenton Persian Medallion Goblet
- _____ **85. Blue - Irid. Czech. Cov. Powder Dish - 3 1/2" Dia.**
- _____ 86. W - 10 1/2" Florentine Candlesticks - Great
- _____ 87. B.A. - Australian 12 Ruffle Compote - Pl. Int. - Unusual
- _____ 88. Blue Jade Opaque - 6 1/4" Wide Panel Salver Comport
- _____ **89. B.A. - Basket Flower Hat Pin - Beauty**
- _____ 90. B.A. - Diamond Spear Hat Pin
- _____ 91. Beaded Ball Shape Hat Pin?
- _____ 92. Aqua - 6" #270 Westmoreland Compote
- _____ **93. P.M. - 9" Hale Baths 1902 Adv. Vase**
- _____ **94. Lav. - 8" Brocaded Acorn Vase - 5 1/4" Opening Super**
- _____ 95. Stretch - Blue Opaque 8 3/4" Stemmed Bowl
- _____ 96. Jade Translucent - 9" Stemmed Deep Bowl - Really Neat
- _____ 97. Lime M - 9 1/4" Ruffle Smooth Ray Bowl
- _____ 98. G - 6 1/2", Near Cut, Inverted Strawberry Bowl - Super
- _____ 99. Dark A - Very Scarce Orange Peel Punch Cup
- _____ **100. Saph. - 8 3/4" Florentine Candlesticks - Super**
- _____ **101. Violet P - 8 3/4" Florentine Candlesticks**
- _____ 102. A - 9 1/2" J.I.P. Corinth Vase
- _____ 103. M - 2 Sides Up - 2 Row O.E. Basket (John H. Brand Adv.)
- _____ 104. Purple Carnival Beads 24"
- _____ **105. Clear - White Brocaded Summer Garden Ice Bucket - Nice**
- _____ 106. P - 10 1/4" Florentine Single Candlestick
- _____ 107. M - Golden Wedding Pt. Bottle Cap & Partial Label
- _____ **108. M - Good Year Ash Tray Adv. in Rubber Tire - Rare**
- _____ **109. M - Top - Clear Base Panel Goblet - Souvenir Stewart Minn.**
- _____ 110. M - Mini Intaglio Nut Cup - Rarity
- _____ **111. Lav. A - Westmoreland Colonial 6 1/2" J.I.P. Vase**
- _____ **112. M - 6 1/4" Clear Base Vase or Wine Adv. Sandstone Minn.**
- _____ 113. Teal Flashed Honey Bee Pot w/Lid
- _____ 114. B - Bulbos 3 3/4" Nugget Pitcher
- _____ 115. Celeste - Pastel Swan Salt
- _____ 116. Clear - 1911 Rochester Shriners Glass
- _____ 117. Clear - 1910 Pittsburgh Shriners Glass
- _____ 118. Clear - 1909 Louisville Shriners Glass
- _____ **119. M - 8 3/4" Dark Florentine Candlesticks**
- _____ **120. M - 4 3/4" Dark Wine Souvenir of Olivia, Minn. - Super Color**
- _____ 121. P - Stretch 8" Smooth Panels Vase w/7" Opening - Wow!
- _____ 122. Marigold Overlay Vaseline Toothpick - Unknown Pattern?
- _____ **123. M - Mini Handled Basket - Souvenir Elkton, Mich.**
- _____ 124. M - Cov. Jelly w/Lid or Candy Stemmed - Black Base
- _____ 125. B - Nugget Little Pitcher
- _____ **126. Great Brocaded Acorns Console Bowl and Candlesticks**
- _____ 127. P.O. - Tips - Westmoreland 8 3/4" Seals Bowl
- _____ 128. Lime M - Overlay Smooth Ray Rib Int. Ruffle Spittoon - Rosebowl?
- _____ **129. M - 7 1/2" Signed Peacock Head - Sowerby Square, Fluted Cane Bowl**
- _____ 130. Dark M - 5" Mitered Diamonds & Pleats Rd. Bowl
- _____ 131. M - 7 1/2" Int. Swirl & Wide Panel Pitcher
- _____ 132. I.B. - Brocaded Acorns Bon Bon
- _____ 133. P.M. - 8 1/2" Lined Lattice Vase - Pretty
- _____ 134. Scarce - A - Coin Spote Ruffle Compote
- _____ 135. M - 4 1/2" Rd. Lattice and Daisy Berry Bowl
- _____ **136. Dugan Celeste - Bowl - 7 1/4" w/Candlesticks Made on Ends - Rare**
- _____ 137. M - Mary Ann Vase - Radium
- _____ **138. Dugan - Celeste Pastel Panels Cov. Pitcher & 6 Tumblers - Complete**
- _____ 139. P.M. - 6 3/4" Dugan Daisy Dear J.I.P. Bowl - Very Scarce
- _____ **140. M - Rare 6 3/4" Large Four Flowers Rose Bowl - Soda Gold Ext.**
- _____ **141. P.O. - 9" Single Flower 3 in 1 Crimp Enamel Int. Floral - Nice**
- _____ 142. B.A. - 9 1/2" Lined Lattice Vase - Multi Elec.
- _____ 143. A - Beaded Shell Tumbler - Great
- _____ **144. Rare Blue - 9 1/2" Target Vase - Great Find**
- _____ 145. P - 6 3/4" Ruffled Bells and Beads Bowl - Super Multi
- _____ 146. 8 Ruffle P.O. 10 1/4" Ski-Star Bowl - Scarce Shape
- _____ 147. M - 7 1/4" Fishscale & Beads Beautiful Plate
- _____ **148. B.A. - Whimsey Tri-Corner Circle Scroll Hat - From Tumbler**
- _____ 149. Beautiful P.M. - J.I.P. Whimsey Circle Scroll Hat
- _____ 150. Frosty White - Constellation Compote
- _____ **151. Fantastic - 7 1/4" - A - Honeycomb & Beads C.R.E. Plate**
- _____ **152. Glows - I.G. - S - Repeat Creamer - Lite Irid w/Gilt Trim**
- _____ **153. (A) - Pastel Violet - Beaded Shell Mug - Rare Base Color**
- _____ **153. (B) - B - Beaded Shell Mug - Rare Color**
- _____ **154. P.O. - Rayed 6 1/4" Plate - Jewel Heart Ext. - Great Opal**
- _____ 155. M - 6 1/4" Persian Garden Plate
- _____ 156. P.O. - 5 1/4" Squatty Vase - 7 1/4" Opening - Wow!
- _____ 157. P.O. - 8 1/2" C.R.E. Caroline Tri-Cornered Bowl
- _____ 158. Radium M - 9 1/4" Double Stem Roses Ruffled Bowl - Very Nice

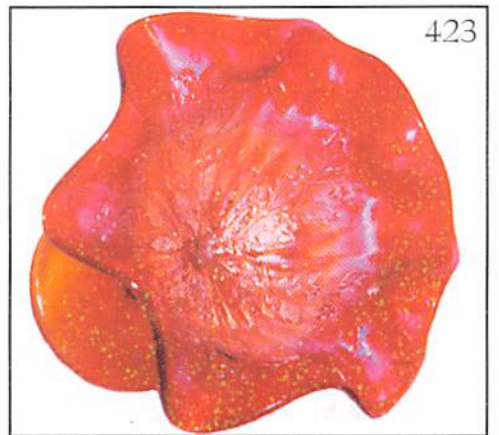
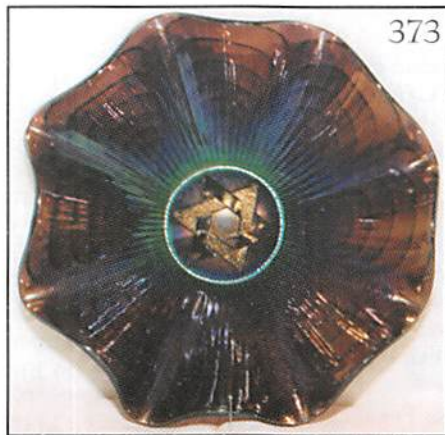
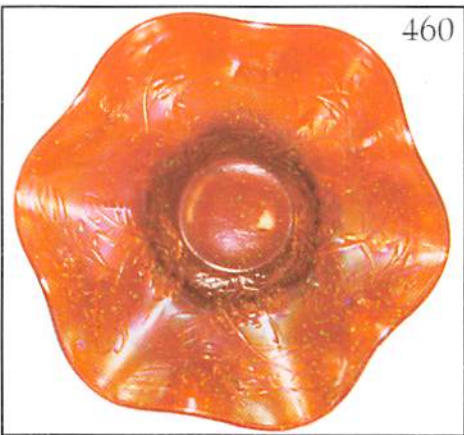
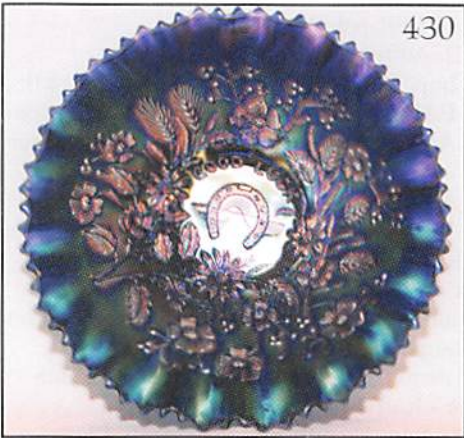
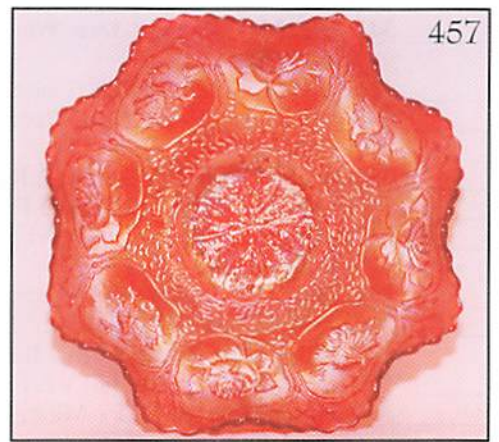
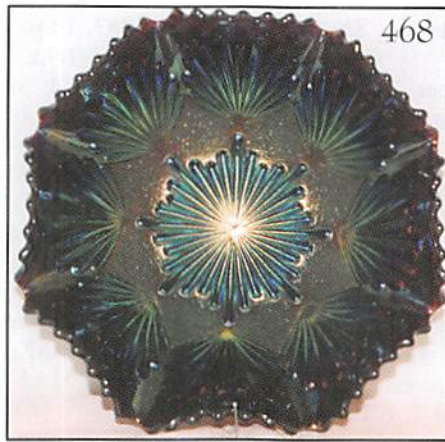


- _____ 159. Blue - 9¼" Pulled Loop Dugan Vase - Rare Color
 _____ 160. Blue - 7½" Lattice & Points Dugan Vase - Rare Color
 _____ 161. Beautiful Leaf Rays Nappy
 _____ 162. P - Beaded Shell Mug - Favorite
 _____ 163. M - 9" 6 Ruffle Pony Bowl
 _____ 164. P - 8" Dugan Holly and Berry Bowl
 _____ 165. B.A. - 2 Sides Up O.E. Basket - Rare Color
 _____ 166. Dark-M - Kittens Card Tray - Very Nice - Banana Bowl
 _____ 167. Mint in Box - Jeanette Glass - M - Butterfly Party Set
 _____ 168. Contemp. - Joe St. Clair Mini Bell
 _____ 169. Imperial? - Large MMG - 6" Rose Bowl - Dark Irid.
 _____ 170. Smoke Soda Gold Console Bowl
 _____ 171. Powder Blue - M - Overlay Fenton Acorn Bowl - Round
 _____ 172. Smooth - B.A. Ruffled 8¾" Dome Base Bowl?
 _____ 173. Yellowish - Pillar & Flute Sherbet Size Compote
 _____ 174. Radium - P.M. - 5½" 3 in 1 Vintage Mlb. Sauce Bowls - A, B or C
 _____ 175. Scarce W - Puzzle, Floral & Wheat Ext. Compote
 _____ 176. Lime-M- Overlay Alaskan Irid. Look - 8¼" Dia. & Bows Vase - Very Unusual
 _____ 177. Alaskan G - N 10" Tree Trunk Vase Vt. - Star Base - Scarce
 _____ 178. Stem - Spooner Shape 4¼" Smooth Ray Int., M, Vase - Enamel Ext.
 _____ 179. Smoke - Shell Dish - Age Unknown
 _____ 180. Yellowish - Shell Dish - Age Unknown
 _____ 181. G - N Wide Panel Compote
 _____ 182. Crystal Memphis N Punch Base
 _____ 183. M - Fenton Paneled C.R.E. Water Pitcher - Unusual Pat.
 _____ 184. P.O. - Tri-Cornered 4¼" C.R.E. Many Ribs Vase
 _____ 185. Amber - 11" Fenton Fine Rib Vase
 _____ 186. M - 11" Beaded Bullseye Vase - 5¼" Top - Super Radium
 _____ 187. M - N 12½" Four Pillars Vase w/Star Base - Swung
 _____ 188. G - 6" Ruffled N Fruits & Flowers Bowl
 _____ 189. I.G. - Premium Candlesticks - Glow Super
 _____ 190. Sapphire - 9½" Fenton Fine Rib Vase
 _____ 191. P - Stretch 8¼" Wide Panel Plate
 _____ 192. Smoke - 13" Imp. Smooth Panels Vase - 6¼" Top - Beauty
 _____ 193. Red - Contemp. 7½" Westmoreland Carolina Dogwood
 _____ 203. M - Fenton 8¼" Ruffle Peacock & Urn Bowl - Great
 _____ 204. M - Persian Medallion Ruffle Sm. Compote - Dk.
 _____ 205. Vas. - Fenton 2 Sides Up Holly Hat - Scarce & Nice
 _____ 206. B - Fenton Plum Panels Vase - 7¼" One Side - 11¼" Other Side - Wow
 _____ 207. Lav. - 6½" Fenton Acorn Rd. Bowl - M - Overlay
 _____ 208. M - 6½" I.C.S. Lions Bowl - Great
 _____ 209. B - Fenton Mini Blackberry Compote - Great Detail
 _____ 210. Lav. - Mid Size 2 Row O.E. Basket - 6¼" Neat Pastel
 _____ 211. B - 7½" 12 Sided Pine Cone Plate - Nice Example
 _____ 212. B - 8½" Cherry Chain Bon Bon - Great
 _____ 213. Super - Fenton G - 3 in 1 Holly Bowl - Emerald
 _____ 214. Small - I.B. 2 Row O.E. Basket - great - Web Ck.
 _____ 215. B.A. - Small 2 Row O.E. Ruffle Basket - Rarity
 _____ 216. G - Small 2 Row O.E. 2 Sides Up Basket - Scarce
 _____ 217. Fenton Horehound Candy Color - Strawberry Bon Bon - Rare
 _____ 218. B - Fenton Ruffle - Peacock & Urn Bowl - Great Irid.
 _____ 219. P - 11" Ruffle Ball FTD. Two Flowers Bowl - Nice Find
 _____ 220. G - 8" I.C.S. Leaf Chain Bowl - Silvery Irid.
 _____ 221. (A) - Powder Blue Spot - FTD. Dragon & Lotus Bowl - M-Overlay - Very Desirable
 _____ 221. (B) - Fenton - M - Strawberry Bon Bon - Berry on Collar Base - Rare
 _____ 222. Fenton - Holly 4 Sides Up Hat - Aqua - Glows
 _____ 223. M - 5" I.C.S. Cherry Chain Bowl - Cutie
 _____ 224. Pastel Teal - Vas.? - Fenton 3 in 1 Holly Bowl - Glows - Super
 _____ 225. Clam - 9" Ruffle Super Beautiful Acanthus Bowl
 _____ 226. M - 8½" Round FTD. Dutch Windmill Bowl - Super
 _____ 227. Red - Imp. 7½" Rd. Wide Panel Bowl
 _____ 228. Smoke - 9¼" Round Hattie Bowl - Beautiful Pastel
 _____ 229. M - Imp. Premium Candlesticks - Pretty
 _____ 230. Amber - Imp. Oval Pickle Dish - Great
 _____ 231. Imperial - Dk. Smoke 6" FTD. Floral & Optic Rose Bowl
 _____ 233. Clam - 9½" Rd. Imp. Grape Master Bowl - Super Irid.
 _____ 234. Celeste Saph. - Large 7¼" Tall Chesterfield Compote - Super Item
 _____ 235. Red - Large 7¼" Tall Chesterfield Compote - Super Item
 _____ 236. Clam - 9" I.C.S. Diamond Lace Bowl - Super Irid.
 _____ 237. M - Imp. Grape 8¼" Low Ruffle Bowl - Beautiful
 _____ 238. Super P.M. - 9¼" Imp. Wheels Bowl - Rare Find
 _____ 239. MMG - 9½" Wide Panel Bowl - Rolled Rim
 _____ 240. Clam - Super Pansy Pickle Dish - Imperial
 _____ 241. A - Imp. Grape 9" Ruffle Bowl - Blue & Purple Irid.
 _____ 242. Super Radium - Imp. Scroll Embossed Compote
 _____ 243. Imp. I.G. - Wide Panel Goblet?
 _____ 244. Purple - Imp. 6" Ruffle - 3 in 1 Bowl - Pl. Int.
 _____ 245. M - Snow Fancy Open Sugar Bowl - Scarce
 _____ 246. Imperial - Iron Cross Mark - Clam Waffle Block Sugar Bowl
 _____ 247. Super M - 9" Imp. Open Rose Plate
 _____ 248. Super Dk. Radium 7¼" Frosted Block Plate
 _____ 249. Smoke - Imp. Double Scroll Console Bowl

**START OF DAY TWO, SATURDAY,
 APRIL 11, 1998 - 9:00 A.M.**

- _____ 194. A - 9½" 3 in 1 Ten Mums Bowl - Beauty
 _____ 195. M - Fenton Holly 3 in 1 Bowl - Super
 _____ 196. M - 10½" Ruffle Fantail Bowl - Fantastic
 _____ 197. Aqua - Fenton 6¼" Round Acorn Bowl
 _____ 198. B - 9" Ruffle Feather Stitch Bowl
 _____ 199. Aqua - 10½" I.C.S. FTD. Stag and Holly Bowl - Very Scarce
 _____ 200. M - 8¾" Ruffled Dragon and Lotus Bowl
 _____ 201. M - 8" I.C.S. Ribbon Tie Bowl - Super
 _____ 202. A - 8" I.C.S. Dragon & Lotus Bowl - Scarce Shape & Color

- _____ 250. Clam. - FTD. Imp. Lustre Rose Centerpiece Bowl - FTD.
- _____ 251. Beautiful Smoke - Imp. 9" Rd. Open Rose Bowl
- _____ 252. W - Frosty Stretch 8 1/2" Floral Optic Rd. Bowl
- _____ 253. P - 9 1/2" Diamond Lace Beautiful Ruffle Bowl
- _____ 254. P - Super 7" Rd. Imperial Grape Bowl
- _____ **255. Beautiful P - Imp. Pansy Ruffle Bowl**
- _____ 256. B - Orange Tree Orchard Tumbler - Beauty
- _____ 257. B - Blueberry Tumbler - Beauty - Multi Irid.
- _____ 258. B - Apple Tree Tumbler - Multi - Elec.
- _____ **259. M - Inverted Coin Dot Tumbler - Lots of Pink Int.**
- _____ 260. M - 3 - 474 Pattern Tumblers - 3 x \$ - Match
- _____ **261. A - Dk. - Imp. Grape Tumbler - Radium Elec.**
- _____ 262. P.M. - Grape Arbor Tumbler - Pl. Int.
- _____ 263. W - Grape Arbor Tumbler - Rib Int.
- _____ **264. B.A. - N Dandelion Tumbler - Rare Multi Irid. Beauty**
- _____ 265. P - N Singing Birds Tumbler - Scarce & Nice
- _____ **266. Rare - I.B. N Raspberry Tumbler - Rib - Int. Wow!**
- _____ 267. M - Grape & Gothic Arches Tumbler
- _____ **268. Frosty W - Peach Tumbler - Gold Decor.**
- _____ 269. A - Mlbg. Radium Diamonds Tumbler - Rarity
- _____ **270. Dk. Radium M - Oklahoma Tumbler - Rare**
- _____ 271. B - N Peacock at Fountain Tumbler - Beauty
- _____ **272. Light Bluish Base Soda Gold Salt & Pepper - M - Overlay**
- _____ 273. Red - Imperial Jewels Creamer & Sugar - Fabulous Color
- _____ 274. P - Imperial 10" Heavy Grape Bowl - Mirror Silver Irid. - Wow!
- _____ 275. Clam - 10 1/2" Wide Panel Chop Plate - Super
- _____ 276. Dark - Multi M Tiger Lily Water Pitcher
- _____ 277. M - Imp. Iron Cross Mark, Pillar & Flute Pickle Dish
- _____ 278. Clam - 7 1/4" Ruffle Imp. Windmill Bowl
- _____ 279. Super Amber Imp. Pansy Sugar Bowl
- _____ 280. Great - 6 1/2" M - Imp. Grape Plate
- _____ 281. Clam - 7 1/2" Pillar & Flute Plate - Iron Cross Mk.
- _____ 282. Clam - Imp. Lustre Rose Fernery - Plain Int. - Super
- _____ **283. Teal - 9 1/4" Fenton Swirled Flute Vase - Rare**
- _____ 284. B - 10" Diamond & Rib Vase
- _____ 285. G - 11 1/4" April Showers Vase - Very Pretty
- _____ 286. Lime Vas. - Fenton 10" Fine Rib Vase - M- Overlay
- _____ 287. Powder B - Fenton 9 1/4" Fine Rib Vase - Beauty
- _____ 288. Dark G - 10 1/2" Diamond Pt. Columns Vase - Neat
- _____ **289. Vaseline - 16 1/4" Fenton Vt. Fine Rib Vase - 5" Opening**
- _____ 290. B - Fenton 12 1/4" Beautiful Fine Rib Vase
- _____ **291. W - Frosty & Nice 15" Rustic Vase**
- _____ 292. A - 11 1/4" April Showers Vase - Peacock Tail Int.
- _____ 293. W - Squatty 7 1/4" Rustic 4 1/2" Top - Frosty
- _____ 294. M - 9 1/4" Dark Butterfly & Berry Vase
- _____ 295. B - 10 1/4" Rustic C.R.E. Top Vase - Neat
- _____ **296. Em. G - Imp. 474 Punch Cup**
- _____ 297. M - Dark & Nice Imp. Waffle Block Punch Cups - 2 x \$
- _____ 298. G - N Acorn Burr Punch Cup
- _____ 299. G - N Memphis Punch Cup
- _____ **300. W - Orange Tree Punch Cups - 2 x \$ - Very Scarce**
- _____ 301. B - Orange Tree Punch Cups - 2 x \$
- _____ 302. I.B. - N Fine Cut and Roses Candy Dish - FTD. - Fancy Int.
- _____ 303. Fiery A - 8" Ruffled N Smooth Ray Pl. Petals Bowl?
- _____ 304. P - N 8 1/2" Ruffle Embroidered Mums Bowl - Scarce & Nice
- _____ 305. M - 8 1/4" Grape and Gothic Arch Master Bowl
- _____ **306. (A) - Marigold Sun Gold Epergne - Very Scarce Beauty**
- _____ 306. (B) - Dk. Amy 9" N 3 Fruits Plate w/B.W. Ext. - Thick Irid
- _____ 307. A.O. - Fine Cut Roses, Fancy Int. Candy Dish - Saph. Ft.?
- _____ 308. M - Grape & Cable Vt., B.W., Ext. 9" N Plate - Beautiful
- _____ **309. M - Wishbone 8 1/2" FTD. Bowl - Super Irid.**
- _____ 310. M - 8 1/4" N 3 in 1 Crimp, Grape Leaves Bowl - Blues & Pinks
- _____ **311. Fiery Amy - 8 1/4" Blackberry N Daisy & Plume Ext. FTD Bowl - Super**
- _____ **312. Rich M - Grape Arbor Tankard Pitcher - The Best**
- _____ 313. I.G. - N Bushel Basket - Scarce & Nice
- _____ 314. P.M. - N Bushel Basket - Beauty - Pink Hi-lites
- _____ **315. Fiery A - 8 1/4" P.C.E. Nippon Rib Bk. Bowl - Super Irid.**
- _____ 316. I.B. - 8 1/4" Ruffle, Rib Bk. Nippon Bowl - Super Irid.
- _____ 317. Fiery A - 8 1/4" N Grape & Cable Vt. Bowl - B.W. Ext.
- _____ **318. Dk. A - 8 1/4" P.C.E. 3 Fruits Bowl - Scarce Shape & Beautiful**
- _____ **319. Super Dk. - I.B. Hearts and Flowers Pl. Ext. Bowl - Beautiful Irid.**
- _____ 320. Fiery A - P.C.E. N Strawberry B.W. Bowl - Great
- _____ 321. A - 6" N Grape and Cable Saucer, Plate
- _____ 322. P.M. - Grape and Gothic Arch Water Pitcher - Very Pretty
- _____ **323. G - 7 1/2" N Fruits and Flowers Plate, B.W. Ext. - Scarce**
- _____ **324. M - Stippled P.C.E. N Peacocks Bowl - Rib Ext. - Lots of Pinks & Golds**
- _____ 325. M - Beaded Cable Rose Bowl - Rib Int.
- _____ 326. B - 8 1/4" Ribbon Tie Bowl - 3 in 1 - Very Pretty
- _____ 327. B - Collar Base Ruffle Dragon and Lotus Bowl - Super
- _____ **328. Aqua - 6 1/4" Ruffle Fenton Grape & Cable Bowl**
- _____ 329. B - 6 1/4" I.C.S. Peacock Tail Bowl
- _____ 330. M - 5" Rd. Pinecone Bowl - Cutie
- _____ 331. Dk. Amber - 7 1/4" Fenton Acorn Bowl
- _____ 332. B - Orange Tree Punch Base - Very Pretty
- _____ **333. M - 7 1/2" Tight C.R.E. Persian Medallion Bowl - Rare Shape**
- _____ 334. B - Round Top Flared Orange Tree Punch Bowl & Base - Great Set
- _____ 335. M - Collar Base - Deep 8" Rd. Bowl - Very Scarce Shape
- _____ 336. Dk. - Super M - 7 1/2" Cherry Circle 2 Hdl. Bowl
- _____ **337. G - 8 1/2" 3 in 1 Wild Blackberry Bowl - Rare Shape & Color**
- _____ 338. G - 9 1/4" Leaf Chain Plate - Silvery
- _____ 339. Pale G - Fenton Peacock and Urn Rd. Flared Compote - M - Overlay
- _____ **340. Beautiful 10 1/4" Cherry Chain 3 in 1 Bowl - Orange Tree Ext. - Rare**
- _____ 341. B - Peacock Tail Ruffle Hat - Beauty
- _____ **342. Soft B - Orange Tree Mug 2 1/2" Base, 3 1/4" Top - Super Elec. Satin**



- _____ 343. Dk. M - Orange Tree Wine Adv. - Sheridan, Wyoming
- _____ 344. G - 6 1/4" - 12 Sided Pine Cone Saucer - Little Beauty
- _____ 345. Dk. - Top to Bottom - M - Rose Spray Goblet Shape Compote - 3 1/2"
- _____ 346. B - 6 1/2" Ruffle, Lg. Hole, 2 Row O.E. Basket
- _____ 347. Vas. 5 1/2" Ruffle - 2 Row O.E. Basket
- _____ 348. M - Mlbg. Radium 9 1/4" Whirling Leaves Bowl - Ruffle
- _____ 349. M - Mlbg. Radium 9 1/2" Primrose Ruffle Bowl
- _____ 350. Yellow Vaseline - Radium Tri-Corner Nappy - Mlbg. Holly Sprig - Ultra Rare - 1 of a Kind?
- _____ 351. M - Mlbg. Peacock Tail VT. Compote
- _____ 352. Super Radium - M - Mlbg. 3 in 1, 6 Pt., Many Stars Bowl
- _____ 353. Radium - A - 6", 3 in 1 Mlbg. Blackberry Wreath Bowl
- _____ 354. M - Mlbg. Isaac Benesch Adv. Bon Bon - Holly Sprig
- _____ 355. Super Radium - A - Mlbg. 6 Pt. Many Stars Ruffle Bowl
- _____ 356. M - Satin Dk. - 10" I.C.S. Mlbg. Hanging Cherries Bowl
- _____ 357. M - 6" Mlbg. Ruffle Hanging Cherries Ruffle Bowl - Rare Size & Shape
- _____ 358. A - 7 1/2" Mlbg. Bullseye & Loop Radium Vase
- _____ 359. A - Mlbg. Hobnail VT. 15" Vase - Original Store Sticker - 5 1/2" Top - Super
- _____ 360. G - Mlbg. Hobnail VT. 11 1/2" Mid Size Vase - 5 1/2" Top - Super
- _____ 361. M - 5" Squatty Boggy Bayou Vase - 4 1/4" Top
- _____ 362. P - 10" Ripple Vase - 5 1/2" Top - Super - Radium Elec. Multi
- _____ 363. M - 4 1/4" Tall, 2 1/2" Base, 4" Top, Ripple Vase - A Dandy
- _____ 364. M - 7 1/4" Tall, 3 1/2" Base, 6" Top, Ripple Vase - Great
- _____ 365. M - 6" Imp. Jewels Ruffle Top Vase - Iron Cross Mk. - Dark
- _____ 366. M - 5" Mini Flared Top Morning Glory Vase
- _____ 367. Aqua - 8 3/4" Ripple Vase - Radium - Rare
- _____ 368. Amber - Ripple 8" Vase, 5" Top - Scarce
- _____ 369. Super M - 6" Imp. Jewels Iron Cross Vase - 5 1/4" Rd. Top - Dark
- _____ 370. Smoke - 6 1/4" Imperial Balloons Blank Vase - Radium
- _____ 371. M - 6 1/4" Imperial Balloons Blank Vase - Radium
- _____ 372. Imperial - Helios Grape Cup & Saucer - Very Scarce
- _____ 373. P - Imp. 8 3/4" Star of David Ruffle Bowl - Super
- _____ 374. P - Imp. 8" Lustre Rose FTD. Bowl - Super Elec.
- _____ 375. Smoke - 7" Imp. Heavy Grape Ruffle Bowl - Rare Beauty
- _____ 376. Super M - 9" Imp. Cobblestone Ruffle Bowl
- _____ 377. Blue Swirl Base - 9" Imp. Heavy Grape Bowl - M - Overlay - Rare
- _____ 378. Amber - 9" Open Rose Plate - Super One
- _____ 379. M - 474 Large Water Pitcher
- _____ 380. Super Dk. Smoke - Star Medallion Milk Pitcher
- _____ 381. P - Scroll Embossed Compote - Pl. Ext. - Super
- _____ 382. Imperial Grape Compote - Super Amethyst
- _____ 383. Rare Lg. M - Diamond Ring Rose Bowl
- _____ 384. Dk. M - Imperial Grape Hld. Basket - 10" Tall
- _____ 385. Imperial P - Windmill Ruffle Relish - Super Blue Irid.
- _____ 386. Rare Imperial Blue - Lustre Rose Fernery
- _____ 387. Imp. - P - 9" Ruffle Hattie Bowl - Super Blue Irid.
- _____ 388. Dk. Smoke - 5 1/2" Morning Glory Vase - Super
- _____ 389. M - Imp. 5 1/4" Columbia Vase - Dk.
- _____ 390. Clam - 6" Pillar Flute Vase
- _____ 391. Dk. M - Imp. 7 1/4" Two Hdl. Vase Rolled Rim
- _____ 392. M - 16 1/4" Ripple Funeral Vase - 7" Top - Super Radium
- _____ 393. P - 5 1/2" Imp. Thumbprint & Oval Vase - Super
- _____ 394. M - Iron Cross Mk. - Imp. Stretch 8" Vase - Square - 7 1/4" Top - Wow!
- _____ 395. MMG - 7" Imperial Vase - Smooth Radium Irid.
- _____ 396. M - 8" Morning Glory Bud Vase - Dark Radium
- _____ 397. P - 6 1/4" Imperial Stretch - Ruffle, Iron Cross Vase - Great
- _____ 398. W - 5 1/2" Imperial Stretch Vase, Iron Cross Rose Bowl Top
- _____ 399. Smoke - 10 1/4" Ripple Vase - Super
- _____ 400. Dk. M - Beautiful Loganberry Vase
- _____ 401. M - 5 1/2" Imp. Jewels Ruffle Vase - Iron Cross Mk.
- _____ 402. Dugan - P.M. 6 1/4" Stippled Estate Vase - Scarce
- _____ 403. Dugan - Aqua - 6" Stippled Estate Vase - Super Rare
- _____ 404. Dugan - A - 6" Stippled Estate Vase - Rare
- _____ 405. Dugan - Lime Vaseline - 6" Stippled Estate Vase - Super Rare
- _____ 406. Fantastic - Fenton M - 9 1/4" Holly Plate
- _____ 407. Super Quality - Pumpkin Irid. M - Over Fenton Holly Moonstone Bowl - Rare
- _____ 408. Rev. Red Amerina - Fenton Strawberry Bon Bon
- _____ 409. Vas. Lime - Ruffle Fenton Holly Compote
- _____ 410. W - Super Irid. Fenton Flat 9 1/4" Holly Plate
- _____ 411. B - Fenton Holly Plate - Super Multi Irid. - Great
- _____ 412. M - J.I.P. 2 Row O.E. Basket - 6" Great (Marigold)
- _____ 413. Saph. Celest - J.I.P. 2 Row O.E. Basket - 6" - Aqua Edge - Beauty
- _____ 414. B - J.I.P. 2 Row O.E. Basket - 5 1/2" - Nice
- _____ 415. G - Blackberry 2 Row O.E. Basket - Very Scarce Color
- _____ 416. B - Super 8 1/4" I.C.S. Fan Tail Bowl - FTD. - Multi Elec.
- _____ 417. G - 10" Persian Medallion Ruffle Bowl - Super Pretty
- _____ 418. Vas. - 2 Roe O.E., J.I.P. Basket - 6" - Scarce Shape
- _____ 419. B - 2 Row O.E., J.I.P. Basket - Nice
- _____ 420. Aqua - 6" Persian Med. Ruffle Sauce - Rare Color & Size
- _____ 421. W - Ruffle 2 Row O.E. Basket, 6" - Frosty & Nice
- _____ 422. B - Orange Tree Ruffle Sm. Compote - Pl. Int. - Great Color
- _____ 423. Rare Red - Fenton Holly Compote Ruffle - Amber Base - Great
- _____ 424. White - Persian Medallion Rosebowl - Beauty
- _____ 425. M - Mikado Flared Rd. Top Compote - Very Lively
- _____ 426. G - Collar Base N 3 Fruits Ruffle Bowl - Beauty
- _____ 427. Elec. Blue - N FTD. Wishbone Bowl - Outstanding Rarity
- _____ 428. Near Em. G - P.C.E. Grape & Cable N Pl. Ext. Bowl - Great
- _____ 429. M - P.C.E. Good Luck Bowl - Bw. Bk. - Scarce Shape
- _____ 430. Super Elec. - P.C.E. Good Luck Bowl - Rib Bk. in Blue
- _____ 431. P - Peacock at the Fountain Sugar w/Lid - Normal Lid Roughness

- _____ 432. P - Grape and Cable Dresser Tray - Super Pretty
 _____ 433. P - N 9½" Ruffle Stippled Rays Bowl - Great Example
 _____ 434. B - Fruits and Flowers Bon Bon - Very Nice
 _____ 435. Beautiful - M - Hearts and Flowers Compote
 _____ 436. G - N Grape and Cable Bon Bon - Way Above Ave. Irid.
 _____ **437. Super G - Grape and Cable Small Fruit Bowl - FTD.**
 _____ **438. A.O. - Leaf & Beads Rose Bowl - Lots of Opal**
 _____ 439. M - N Lustre Flute Nappy from Punch Cup
 _____ **440. Frosty - W - Rose Show Plate - Very Nice Plate**
 _____ 441. Fantastic - Fiery A - 9" Ruffle Grape Leaves Bowl N
 _____ 442. Scarce G - Fruits and Flowers Bon Bon
 _____ 443. G - N Flute Sm. Compote or Sherbet - Cutie
 _____ **444. Lime I.G. - 11½" Mid Size Tree Trunk Vase - 4¾" Base - Rare Beauty**
 _____ **445. M - 8½" Four Pillars Vase w/Draperly Between Pillars - Rarity**
 _____ **446. Rare N Blue Diamond Points Squatty 7" Vase - Super Elec.**
 _____ **447. A.O. - 11" N Four Pillars Vase - Dk. Base - M - Overlay**
 _____ 448. P - 10" Tree Trunk Vase - 5" Top
 _____ 449. P.M. - 5½" Ribbed Ruffle Top Vase
 _____ **450. Very Scarce - 10½" B Tree Trunk Vase**
 _____ 451. Clear Base - 15½" Wide Panel N Funeral Vase - M - Top
 _____ 452. M - Squatty 7" N Tree Trunk Vase Vt. - Star Base
 _____ **453. Rare Vaseline - 9" Chrysanthemum Deep Ruffled Ball Ft. Bowl - Few Known**
 _____ 454. Dk. M - Fenton #260 FTD. Compote - Beauty
 _____ 455. Vas. - Fenton Holly Goblet Compote
 _____ **456. Deep Red - J.I.P. Fenton Blackberry Spray C.R.E. Hat - 2 Sprays**
 _____ **457. Red - 9" Ruffle Dragon & Lotus Bowl - Rare - Reddish Gold Irid.**
 _____ 458. M - Fenton Mini Nut Cup
 _____ 459. Beautiful Radium Yellow M - Saw Tooth & Prisms Jelly Jar & Lid
 _____ **460. Red - Ruffle Fenton Holly Hat - Super**
 _____ **461. Great Ruffled Blue Mikado Lg. Compote - Very Scarce and Great Example**
 _____ 462. Vas. - Fenton Mini Nut Cup
 _____ **463. Aqua - Fenton 7½" Deep Rd. Grape & Cable Bowl - Beauty**
 _____ **464. W - Enameled Shasta Dairy Water Pitcher - Great**
 _____ 465. G - 3 in 1 - 8¼" Concord Bowl - Scarce Shape
 _____ 466. Pale B Base - Holly Compote w/M-Overlay
 _____ **467. P - 8" Collar Base Ruffle Open Rose Bowl - Super Irid.**
 _____ **468. P - 7¼" Shell & Sand Ruffle Bowl - Super Radium Elec.**
 _____ 469. Teal - Glows - Imp. Grape 9¼" Plate - Rare Silvery Irid.
 _____ **470. Scarce - 8½" - M - Flute & Cane Pitcher**
 _____ 471. M - Double Scroll Candlesticks
 _____ 472. Lav. - 9¼" Imp. Grape Low Ruffle Bowl
 _____ 473. M - 474 Dk. Radium Compote - Scarce Beauty
 _____ 474. M - Scroll Embossed Compote - Curved Star Ext. - Base Glows
 _____ 475. Teal - Pl. Ext. Scroll Embossed Compote - Glows Wild, Black Lite
 _____ 476. Great B - Stippled Rays Breakfast Cr. & Sugar
 _____ **477. Multi Elec. - P - Ruffle Imp. Pansy Bowl**
 _____ **478. Super Amberina Red - Double Scroll Candlesticks - Rare**
 _____ 479. Super - 8½" Imp. Heavy Grape Bowl - Rd.
 _____ 480. 3 Amber - Colonial Panel Lamp Shades - 3 x \$
 _____ 481. M - VT. Double Scroll, Swirl, Console Bowl - Very Scarce
 _____ 482. Amber - 9¼" Ruffled Heavy Grape Bowl - Radium
 _____ 483. G - 8½" Rd. Imp. Dia. Lace Bowl - 1 of 3
 _____ 484. Smoke - Pl. Int. 6¼" Imp. Rd. 3 in 1 Pattern Bowl
 _____ 485. Clam - 5¾" Wide Panel Plate
 _____ 486. Dk. M - Waffle Block Punch Bowl Only
 _____ **487. P - Scroll Embossed Compote - Curved Star Ext. - Super**
 _____ **488. Amber 9" - Imp. Grape Ruffle Bowl - Scarce Beauty**
 _____ 489. Super & Frosty - W - Floral & Optic FTD. Cake Plate - 10½"
 _____ **490. Smoke - 10" Tall Imperial Grape Basket - Beautiful**
 _____ **491. B - 8¾" Collar Base Imperial Open Rose Bowl - Rare Color**
 _____ 492. Clam - 9¼" Star Medallion Plate - Pink & Blues
 _____ 493. Iron Cross Mk. - W - Imp. Stretch I.C.S. Bowl
 _____ 494. Iron Cross Mk. - M - Stretch Vase - Rose Bowl Top
 _____ 495. Smoke - 12¼" Ripple Vase - A Beauty
 _____ 496. Teal Base - Iron Cross Mk. Bulbos - 6" Sq. - Open Top Vase
 _____ 497. M - Imperial Balloons Vase - Neat Item
 _____ 498. MMG - 8½" Smooth Radium Vase
 _____ 499. Russett - 11", 4 Pillar Vase - Smooth Rib Int.
 _____ **500. Great - A - 12½" Mid Size Tree Trunk w/6" Top - Wow!**
 _____ 501. M - J.I.P. Rib Ext. Vase
 _____ 502. M - N 7¼" Draperly Vase - Dk. & Pretty
 _____ 503. I.G. - N 7¼" Draperly Vase
 _____ 504. G - 4 Pillar Vase - 7¼" w/Star in Base - Pretty
 _____ 505. M - 7¼" Squatty Tree Trunk Vase - 5" Top
 _____ **506. B - Rare 7¼" Four Pillars Vase-N-Rib Int. Great**
 _____ 507. G - Grape & Cable Butter Dish Lid - Pink Irid.
 _____ 508. M - 5¼" Thin Rib & Drape Mini Vase - Super
 _____ **509. Super 9¼" Ripple Vase - Purple**
 _____ 510. B - Orange Punch Cup - Chip Base
 _____ 511. P - Imp. Grape 7 Pc. Water Set
 _____ 512. M - Tree Bark 7 Pc. Water Set
 _____ 513. M - Imp. Grape Decanter - No Stopper
 _____ 514. G - Imp. Grape Decanter w/Stopper

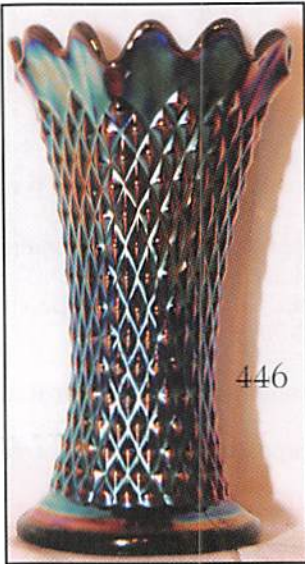
(APPROXIMATELY 50 PCS. SOLD AT END OF CATALOG)

THANK YOU

WE APPRECIATE YOUR BUSINESS!
 BOTH BUYER AND SELLER
 "Glass Attracts Glass"

CALL US TODAY FOR YOUR AUCTION OF
 1 PIECE OR ENTIRE COLLECTION!
 NEXT AUCTION MAY 15 & 16, 1998

Respectfully
Mickey Reichel



446



447



358



500



109

112



120

343



403

405



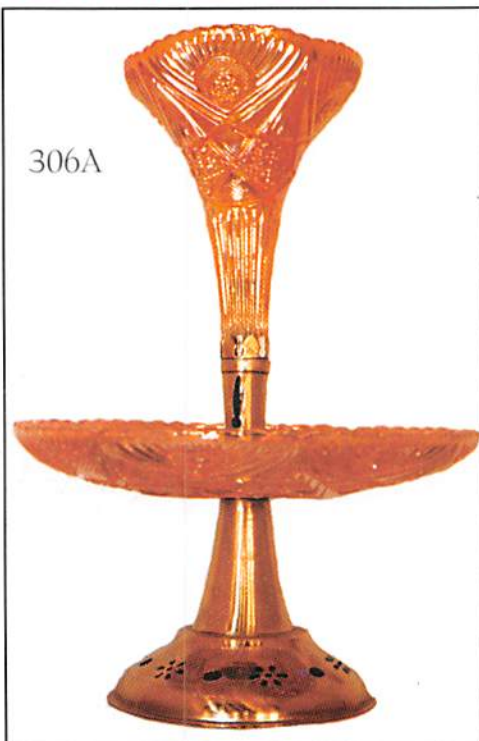
402

404

MICKEY REICHEL
AUCTION COMPANY
516 THIRD STREET
BOONVILLE, MO 65233-1536



FIRST CLASS MAIL



306A

SPECIAL INVITATION TO:

