

ESTATE CARNIVAL GLASS AUCTION

Session #1 - Friday, February 27, 1998, 6:00 p.m.

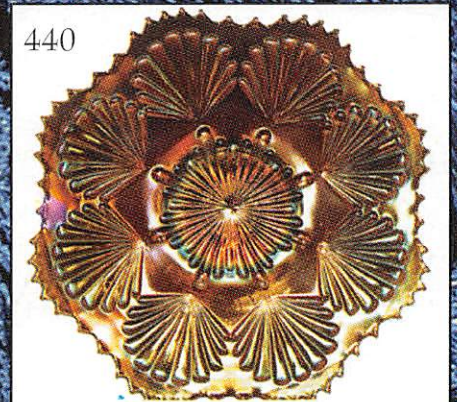
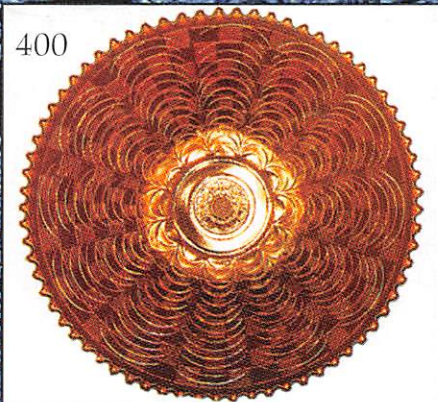
Session #2 - Saturday, Feb. 28, 1998, 9:30 a.m.

Held Inside the Mickey Reichel Auction Center

1 Mile North of I-70 on Hwy. 5, Exit 101, Boonville, Missouri • 20 Miles West of Columbia, MO on I-70



Office Phone: 660-882-5292 • Home Phone: 660-882-5283



SOLD WITH NO RESERVES - NO BUYERS PREMIUM

Held Inside the Mickey Reichel Auction Center

1 Mile North of I-70 on Hwy. 5, Exit 101, Boonville, Missouri • 20 Miles West of Columbia, MO on I-70

Preview Friday 12 p.m. - 6 p.m. and 7:30 a.m. - 9:30 a.m. Day of Auction


Make Reservations NOW at one of these local motels:


Days Inn: 660-882-8624 • Comfort Inn: 660-882-5317 • Super 8: 660-882-2900

Auction Consists of Rarity, Great Irid. and Variety

WRITE IN BIDS: If you are unable to attend the auction, we will be happy to accept absentee bids which must be received by THURSDAY, February 26, 1998. Don't Delay. **FOR AUCTION PRICE RESULTS:** Send S.A.S.E and \$3.00 to 516 Third Street, Boonville, MO 65233.

PLEASE NOTE: There is a \$5 handling charge for each successful bid which will be added to the selling price for all write-in bids. This is in addition to the cost of postage, insurance and packing. Your write-in bid will be entered just as if you are present and bidding. Successful bidders will be notified in 1 to 3 days by the auctioneer (so be sure to include your phone number). Direct mail bids to Auctioneer Mickey Reichel, 516 Third Street., Boonville, MO 65233-1536. Terms: Cash or Check accepted with proper I.D. and Social Security Number and References. Announcements made day of the auction supercede all printed material. Not Responsible for Accidents or Sold Items. **No return on any items once they leave the Auction Center (No Exceptions).******

 **Call for additional information: 660-882-5292 days or 660-882-5283 evenings.**

 **FAX: 660-882-5292 (evening hours start FAX transmission after beep)**

NOTE: Read each line, Bold and Plain print. Huge Quality Selection.

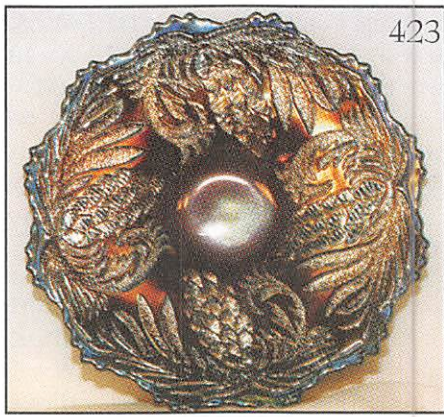
DAY 1 - FRIDAY, FEBRUARY 27, 1998

- | | |
|--|--|
| _____ 1. P - Dahlia Sugar Bowl - No Lid | _____ 28. G - 9½" 3 in 1 Fenton Stippled Ray Bowl - Very Nice |
| _____ 2. M - Blackberry Banded - 6 Ruffle Hat | _____ 29. M - Octagon Goblet - Great One |
| _____ 3. B - Blackberry Banded - 6 Ruffle Hat | _____ 30. P.M. - 8" 6 Ruffle Mlbg. Little Stars Bowl - Satin |
| _____ 4. M - Wreath Rose - Rose Bowl | _____ 31. M - 11" Ruffle Long Hobstar Fruit Bowl - Radium |
| _____ 5. B - Fenton Iris Compote - Rare Color | _____ 32. M - 8" I.C.S. Collar Base Peacock and Grape Bowl |
| _____ 6. M - J.L.P., C.R.E. - Fern Panels Hat | _____ 33. A - 7¼" Ruffled Spat. FTD. Peacock and Grape Bowl |
| _____ 7. B - 6 Ruffle French Knots Hat - Super | _____ 34. M - 8 Ruffle 7" Triplets Bowl - Pink Rainbow Stretch |
| _____ 8. M - Vintage Nut Bowl - FTD. | _____ 35. M - 9½" 6 Ruffle Dugan Malaga Bowl - Very Scarce |
| _____ 9. P - <u>N</u> - Acorn Burr - Small Berry Bowl | _____ 36. B - Grape and Gothic Arches Spooner |
| _____ 10. G - <u>N</u> 8" Tri-Corner Leaf Beads Bowl - Stippled Ray Int. - Rare Color & Shape | _____ 37. Pink - Double Dolphin Candle Stick |
| _____ 11. M - <u>N</u> 8" Tri-Corner Lead Beads Bowl - Stippled Ray Int. - Great Color | _____ 38. M - 7" Smooth Panels Vase - 6" Rd. Top - Beauty |
| _____ 12. G - Leaf Beads, Stippled Ray Int. Rose Bowl | _____ 39. G - 8½" April Showers Vase |
| _____ 13. P - 6 Ruffle 5" Zipper Heart Berry Bowl | _____ 40. A - 11" April Showers Vase - Swung |
| _____ 14. M - 7" 6 Ruffle Blackberry Spray Bowl | _____ 41. Lime - I.G. Cambridge Proud Puss Bottle - Glows - Not Irid. |
| _____ 15. M - 4½" Imp. Pillar and Flute Rose Bowl - Very Scarce | _____ 42. G - Coin Dot 3 in 1 Fenton 9¼" Bowl - Very Nice |
| _____ 16. G - <u>N</u> Daisy and Plume FTD. Rose Bowl - Pl. Int. | _____ 43. M - Hattie Deep 8 Ruffle Bowl - Radium |
| _____ 17. P.O. - 8" C.R.E. Dugan Single Flower Framed Hand Grip Bowl - Great One | _____ 44. P - <u>N</u> Small Size FTD. Grape and Cable Orange Bowl |
| _____ 18. P - 5½" Puzzle Round Handle Compote | _____ 45. P.O. - 7½" Spat. Ft. Ruffle Peacock and Grape Bowl |
| _____ 19. P.M. - 7½" <u>N</u> Petals Compote - Soft Pinks | _____ 46. G - Collar Base 3 in 1 Peacock and Grape Bowl |
| _____ 20. M - 5½" Hobstar Band Compote - Scarce | _____ 47. B - Collar Base I.C.S. Peacock and Grape Bowl |
| _____ 21. A - 9" 8 Ruffle <u>N</u> Grape Leaves Bowl - Pinks & Blues | _____ 48. M - 8½" I.C.S. Imp. Three in One Bowl - Radium |
| _____ 22. P.M. - 9" 3 in 1 Edge <u>N</u> Grape Leaves Bowl - Scarce | _____ 49. M - 8" Round Imp. Shell and Sand Bowl - Scarce |
| _____ 23. B.A. - Maple Leaf Creamer | _____ 50. M - Grape Arbor FTD. Fruit Bowl - Great Item |
| _____ 24. M - 9" Collar Base Peacock and Grape 8 Ruffle Bowl | _____ 51. 9" 6 Ruffle Peacock Tail Bowl |
| _____ 25. M - 7½" Deep Round Intaglio Grape and Cherry Bowl | _____ 52. P.O. 9" C.R.E. Caroline Dugan Bowl |
| _____ 26. M - M - Collar Base <u>N</u> Greek Key Bowl | _____ 53. M - 9½" FTD. Water Lily or Lotus and Poinsettia Bowl |
| _____ 27. M - 7½" Spat. FTD. Rd. Dragon & Lotus Bowl - Scarce | _____ 54. M - Peach and Pear Dugan Banana Bowl |
| | _____ 55. A - Dugan Dome Base Vintage Bowl - Scarce |

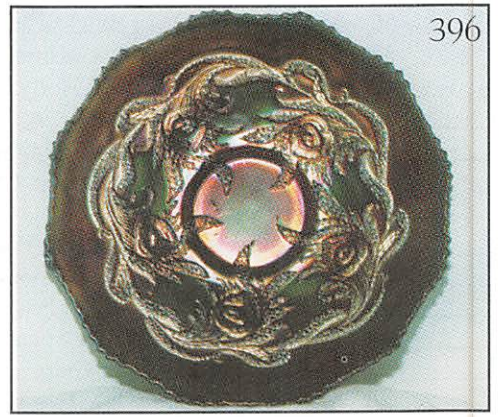
- _____ 56. M - Mlbg. Big Fish Bowl - Chip & Crack
 _____ 57. P - 5" 6 Ruffle Dia. Lace Bowl - Super
 _____ 58. M - Lg. Ruffle Stag and Holly Bowl - Dark & Nice
 _____ 59. Pink Slag - Choice 2 - H.O.A.C.G.A. 1991 Mugs
 _____ 50. **M - Illinois Daisy Cookie Jar w/Lid - Nice Rarity**
 _____ 61. **M - 4³/₄" Intaglio Cherry Cable Bowl - Very Scarce**
 _____ 62. **M - Imperial Banded Ribs Water Pitcher**
 _____ 63. W - Contemporary Indian Toothpick Holder
 _____ 64. Red - 1991 H.O.A.C.G.A. Peacock & Dahlia Plate
 _____ 65. M - Split Diamond Open Sugar Bowl - Scarce
 _____ 66. P - Whimsey Hat from Grape & Cable Tumbler
 _____ 67. M - 9" I.C.S. Ball FTD. Two Flowers Bowl
 _____ 68. **P - Prisms Westmoreland Little Compote - Radium**
 _____ 69. M - Ruffle Radium Propeller Sm. Compote - Radium
 _____ 70. P - Graceful Vase - Great Example
 _____ 71. **B - Milady Tumbler - Scarce**
 _____ 72. M - Paneled Dandelion Tumbler
 _____ 73. P - N Dandelion Tumbler - Very Pretty
 _____ 74. M - N Oriental Poppy Tumbler
 _____ 75. **Clam - Lustre Rose VT. Imp. Tumbler - Rare**
 _____ 76. P - Vineyard Tumbler
 _____ 77. G - Imp. Field Flower Tumbler - Radium w/Golds
 _____ 78. **Celeste - Con Cave Diamond Tumbler - Super**
 _____ 79. M - Butterfly and Berry Tumbler - Bl. & Pinks
 _____ 80. B - Peacock at Fountain Tumbler - Dugan
 _____ 81. P - N Acorn and Burrs Tumbler
 _____ 82. M - Imp. Tiger Lily Tumbler - Scarce
 _____ 83. M - N Int. Swirl Tumbler - Scarce
 _____ 84. M - Stork and Rushes Tumbler - Lattice Band
 _____ 85. **B - Ten Mums Tumbler - Very Scarce**
 _____ 86. B - Blueberry Tumbler - Very Desirable
 _____ 87. B - N Peach Multi Electric Tumbler
 _____ 88. G - Daisy and Plume N Compote, Pl. Int.
 _____ 89. G - Fenton Butterfly BonBon
 _____ 90. P.O. - Fish Scale & Beads Ruffle C.R.E. Bowl
 _____ 91. B - Spat. FTD. 8" 8 Ruffle Stag and Holly Bowl
 _____ 92. P.O. - 9" C.R.E. Rd. Caroline Dugan Bowl
 _____ 93. B - Fenton Strawberry Bon Bon - Nice
 _____ 94. P.M. - 9" 8 Ruffle N Grape Leaves Bowl
 _____ 95. **Rare - Pearlized Grape and Cable B.W. Bon Bon Custard - Lite Nutmeg**
 _____ 96. M - Ripple 7" Squatty Vase - Ruffle 5", Top
 _____ 97. A - Diamond Point Columns 9¹/₂" Vase - Pretty
 _____ 98. M - Bulls Eye and Beads 10¹/₄" Radium Vase
 _____ 99. **Russet - Olive 11¹/₄" Four Pillars Vase - Great**
 _____ 100. **M - 8" Imp. Smooth Two Handle Vase**
 _____ 101. Pumpkin M - 5" Mini Thin Rib and Drape Vase - 3³/₄" Top
 _____ 102. Dark B - 6" Paneled Diamonds and Bows Vase - Scarce
 _____ 103. P.O. - 9¹/₄" Pulled Loop Vase - Nice
 _____ 104. 11¹/₄" Pulled Loop Vase - Radium
 _____ 105. P - 9¹/₂" N Thin Rib Vase
 _____ 106. Radium M J.I.P. 10" Imp. Morning Glory Vase
 _____ 107. P.O. - 5¹/₄" Tall Tri Corner C.R.E. Pastel Panels Vase
 _____ 108. A - 11" Lined Lattice Vase - Multi Radium
 _____ 109. M - 10¹/₄" Beaded Bulls Eye Vase
 _____ 110. **M - 4³/₈" Rococo Vase - A Beauty**
 _____ 111. M - 5³/₄" Mini Morning Glory Vase - 4¹/₂" Top
 _____ 112. A - 10 Ruffle Windflower Bowl - 8¹/₂" - Great One
 _____ 113. P.M. - Spat. FTD. - I.C.S. Peacock and Grape Bowl
 _____ 114. **A - 8¹/₂" Collar Base 3 in 1 Peacock and Grape Bowl**
 _____ 115. **Yellow Amber - Leaf Swirl Compote - Scarce**
 _____ 116. B - Scotch Thistle Compote
 _____ 117. M - Scotch Thistle Compote
 _____ 118. Celeste B - Swan Salt
 _____ 119. **M - Hobstar Reversed FTD. Rose Bowl**
 _____ 120. **M - Kokomo Rose Bowl FTD. - Scarce**
 _____ 121. W - Ruffle Leaf Chain Bowl - Super Pinks and Blues
 _____ 122. M - Butterfly and Berry Butter Dish w/Lid
 _____ 123. M - Cosmos and Cane Spooner - Very Nice
 _____ 124. M - N Acorn Burrs Sugar w/Lid
 _____ 125. M - N Acorn Burrs Spooner
 _____ 126. M - 6¹/₄" Persian Garden Plate
 _____ 127. M - 7" Fish Scale and Beads Flat Plate
 _____ 128. **P - N Fancy Int. Fine Cut and Roses, Rose Bowl**
 _____ 129. M - N Daisy and Plume Pestal Rose Bowl
 _____ 130. P - Double Loop Open Sugar Compote - Very Scarce
 _____ 131. M - Small Panther Ruffle Berry Bowl - Chip
 _____ 132. G - N Wild Rose FTD. Nut Bowl - Rays Int.
 _____ 133. **B - Small 6 Ruffle Fenton Holly Compote**
 _____ 134. M - Wide Panel Mini Compote - Scarce
 _____ 135. **P - N Blackberry Compote - Super**
 _____ 136. M - Fine Cut Flower Compote - Radium
 _____ 137. **M - Columbia Ruffled Compote - Rare**
 _____ 138. M - Radium Golden Honey Comb Compote
 _____ 139. M - Mlbg. 7" Hanging Cherries I.C.S. Bowl - Pink, Blues
 _____ 140. A - Mlbg. 10" Hanging Cherries I.C.S. Bowl - Satin
 _____ 141. M - Mlbg. 10" Hanging Cherries I.C.S. Bowl
 _____ 142. B - 6 FTD. Grape Delite Nut Bowl
 _____ 143. **Teal - Louisa FTD. Nut Bowl - Very Scarce**
 _____ 144. **Super M - Leaf Beads Nut Bowl Sunflower Int.**
 _____ 145. **P - N Rosette FTD. Radium Nut Bowl - Rare & Nice**
 _____ 146. M - Pond Lily Bon Bon - 2 Sides Up
 _____ 147. M - Pond Lily Bon Bon - 4 Sides Up
 _____ 148. G - N Holly Paneled Bon Bon - Radium
 _____ 149. G - Honeycomb and Clover Bon Bon
 _____ 150. **P - N Raspberry Sauce Boat - Very Nice**
 _____ 151. **Red A - 8 Ruffle - 9¹/₂" N Wild Strawberry Bowl**
 _____ 152. A - 8 Ruffle Collar Base Dragon & Lotus Bowl
 _____ 153. P.O. - 8¹/₄" Apple Blossom Twig Low Round Bowl
 _____ 154. **G - N Dome Base 3 Fruits Basket Weave Bowl**
 _____ 155. **B - 6 Ruffle Heart and Vine Bowl - Great**
 _____ 156. A - Tight C.R.E. Ribbon Tie Bowl - Scarce
 _____ 157. A - Westmoreland #270 Pattern Compote
 _____ 158. **B.A. - Question Mark Compote - Scarce Color**
 _____ 159. P.O. - Question Mark Compote - Great Example
 _____ 160. **A - Deep 7¹/₂" Mlbg. C.R.E. Holly Sprig Bowl - Radium**
 _____ 161. **M - 8¹/₂" Mlbg. 3 in 1 Holly Sprig w/8 pt. Star Center - Radium & Rare**
 _____ 162. G - Mlbg. Holly Sprig Nappy - Radium - Tri-cornered
 _____ 163. G - Deep Mlbg. Holly Sprig Bon Bon - Radium



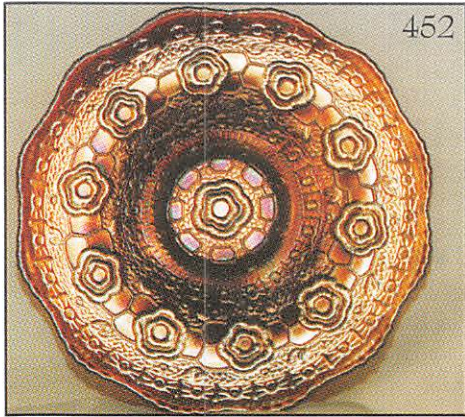
476



423



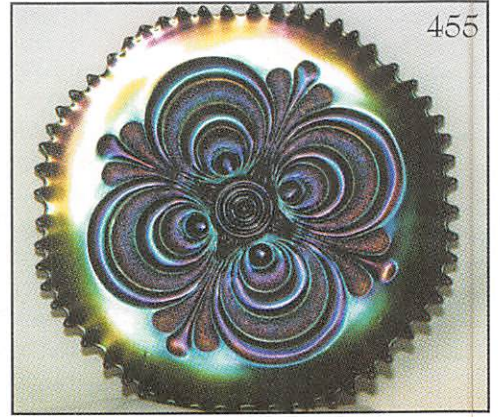
396



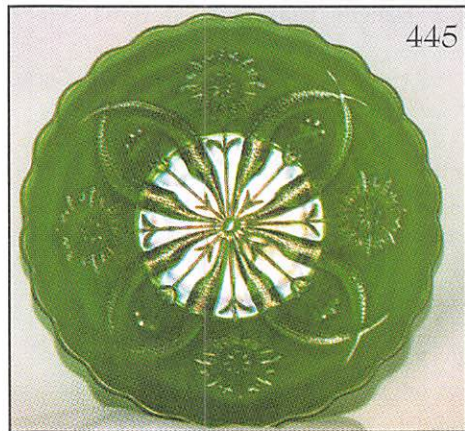
452



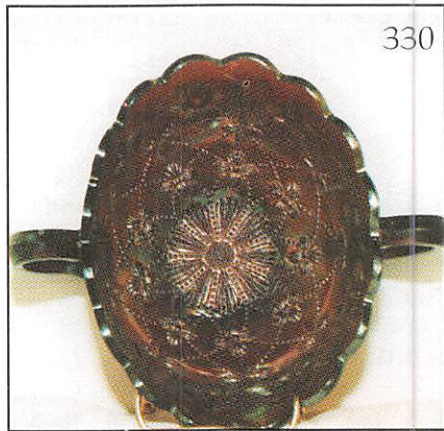
443



455



445



330



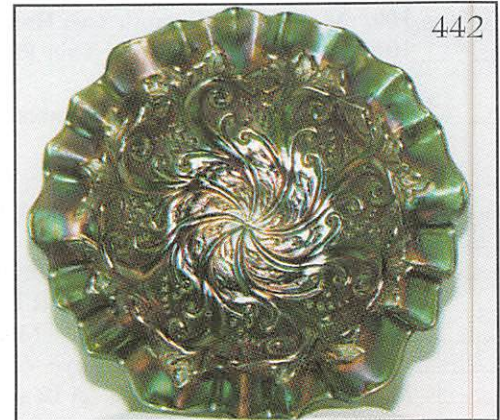
436



441



431



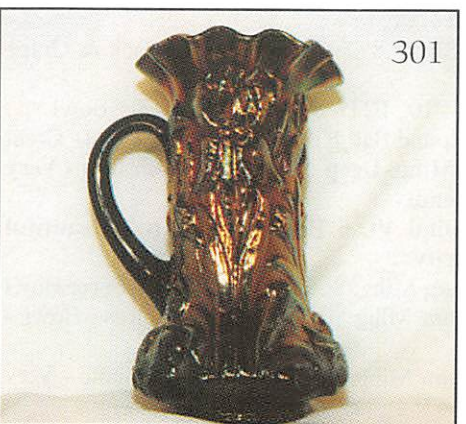
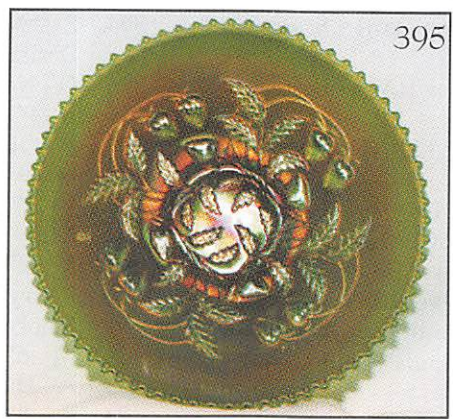
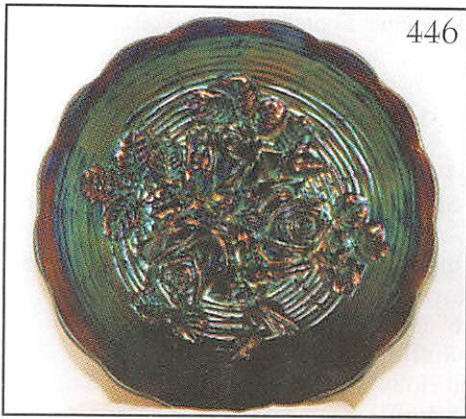
442

- _____ 164. A - Mlbg. Holly Sprig Bon Bon Satin - Leaf Center
 _____ 165. G - Mlbg. Holly Sprig Bon Bon - Leaf Center
 _____ 166. M - Mlbg. Holly Sprig Card Tray Bon Bon - Leaf Center
 _____ 167. **M - Mlbg. Deep 6½" C.R.E. Holly Sprig Bowl - Radium - 4 Pt. Feather Leaf Ct.**
 _____ 168. G - 7" Round Inverted Near Cut Strawberry Bowl
 _____ 169. G - N Rainbow Compote B.W. Ext. - Base Chip
 _____ 170. **G - Leaf Beads Rose Bowl - Sunflower Int. - Super**
 _____ 171. Red A - Leaf Beads Rose Bowl - Sunflower Int. - Great
 _____ 172. M - Leaf Beads Rose Bowl - Sunflower Int. - Great
 _____ 173. **M - Stream of Hearts 3 in 1 Edge Compote - Rare Edge & Nice**
 _____ 174. **A - Coin Dot Compote - Rare Item - Few Known**
 _____ 175. B - Small Size Six Ruffle Persian Med. Compote
 _____ 176. M - 7" 6 Ruffle Thistle and Lotus Bowl - Great Find
 _____ 177. M - 7¼" Tri-Corner Plain Beads and Flowers Plate
 _____ 178. B - Orange Tree Shaving Mug - Beautiful
 _____ 179. M - Persian Medallion Card Tray Bon Bon
 _____ 180. **A - 8" Radium I.C.S. Dugan Double Stem Roses Bowl - Super Irid.**

START OF DAY TWO - SATURDAY FEBRUARY 28, 1998

- _____ 181. B - 7" Fenton Acorn Rd. Low Bowl - Very Pretty
 _____ 182. P - 6½" Tree Trunk Squatty Vase - 5¼" Top - Great
 _____ 183. M - Square 2 Row Open Edge Basket - 5¼"
 _____ 184. Cobalt 5¼" 6 Ruffle 2 Row O.E. Basket
 _____ 185. **G - J.I.P. 2 Row Open Edge Basket - Rare Color**
 _____ 186. M - J.I.P. 2 Row Open Edge Basket - Scarce
 _____ 187. **Red - 2 Row O.E. Basket w/6 Ruffles**
 _____ 188. Yellow Amber - 10" Corinth J.I.P. Vase
 _____ 189. P - Imp. 12" Ripple Vase - 5" Top - Super
 _____ 190. **M - 6" Summer Days Vase - Very Scarce**
 _____ 191. **M - Woodpecker Wall Pocket Vase - Super**
 _____ 192. M - Radium 11½" Ripple Vase - Beauty
 _____ 193. M - Hobstar & Feather Punch Cup - Scarce
 _____ 194. Lav. A - 9" Concave Flute Vase - Super Radium
 _____ 195. P - 6 Ruffle Leaf Ray Nappy - Electric
 _____ 196. **Honey Amber - Palm Beauty Gooseberry Int. 4½" Bowl - Scarce**
 _____ 197. G - N Rosette 8 Ruffle FTD. Bowl - Beautiful Item
 _____ 198. B - Fenton Peacock and Urn Bell Shape Compote
 _____ 199. B - 4 Ruffle Persian Medallion Bon Bon
 _____ 200. **A - Slag 10½" 3 in 1 Edge Fenton Vintage Grape Vt. Bowl - Very Unusual Color & Size**
 _____ 201. G - Fruits and Flowers Bon Bon N
 _____ 202. P - Fruits and Flowers Bon Bon N - Multi. Elec.
 _____ 203. B - Birds and Cherries Card Tray Bon Bon - Great Detail
 _____ 204. M - Fenton Vintage Card Tray Bon Bon
 _____ 205. A - 9½" Fenton 3 Fruits Plate - 12 Sided - Above Ave.
 _____ 206. P - 9" N 3 Fruits Basketweave Plate
 _____ 207. **M - 9" Poppy Show Plate - Pinks, Blues & Golds**
 _____ 208. A - N Wishbone FTD. Bowl
 _____ 209. G - N 9" Ruffle Grape & Cable Bowl - Pl. Bk.
 _____ 210. **M - 5¼" Mlbg. Radium Deep Rd. Blackberry Wreath Berry Bowl - Great**
 _____ 211. M - 7" Mlbg. Dk. Radium I.C.S. Blackberry Wreath Bowl
 _____ 212. A - 6" Mlbg. Satin I.C.S. Blackberry Wreath Bowl
 _____ 213. A - 8¼" Mlbg. Satin I.C.S. Blackberry Wreath Bowl
 _____ 214. P.O. 10½" 8 Ruffle Petal & Fan Bowl - Great Example
 _____ 215. P - N 11¼" Stippled Ray 8 Ruffle B.W. Bowl
 _____ 216. M - 10¼" I.C.S. Lg. FTD. Stag and Holly Bowl
 _____ 217. **P.O. - Dugan 10 Ruffle Dogwood Sprays Bowl - Great**
 _____ 218. **P.O. - Dugan Ball FTD. Crimp Banana Boat Shape Cherrys Bowl - Int. & Ext.**
 _____ 219. G - Mlbg. Rays and Ribbons 3 in 1 Bowl - 10" - Satin
 _____ 220. A - Fenton Feathered Serpent Bowl - 10" 6 Ruffle
 _____ 221. M - Fenton Feathered Serpent Bowl - 10" 6 Ruffle
 _____ 222. P - N Singing Birds Mug - Multi, Elec.
 _____ 223. PM - Beaded Shell Mug - Scarce
 _____ 224. **A - Dark S Repeat Punch Cup - Very Scarce**
 _____ 225. **A.O. - N Dandelion Mug - Super**
 _____ 226. **Red - Orange Tree Mug - Special Find**
 _____ 227. Smoke - Soda Gold Tumbler - Scarce
 _____ 228. M - Soda Gold Tumbler - Pretty
 _____ 229. B - Blueberry Tumbler
 _____ 230. B - Gothic Grape & Arches Tumbler
 _____ 231. M - Gothic Grape & Arches Tumbler
 _____ 232. P - N Raspberry Tumbler - Multi
 _____ 233. **G - N 7½" Jester Shape Vase - Rare Shape in Thin Rib**
 _____ 234. **A - Mary Ann Vase - Rare & Radium**
 _____ 235. M - Mary Ann Vase - Great Item
 _____ 236. **A - Mlbg. Radium Dark Tulip Scroll Vase**
 _____ 237. W - 9½" Fenton Holly Plate - Blues & Pinks
 _____ 238. M - 9½" Fenton Holly Plate - Super - Base Chip
 _____ 239. M - 9" Three Fruits B.W. Plate
 _____ 240. **Clam. - 9¼" I.C.S. Imp. Fashion Bowl - Radium Scarce Beauty**
 _____ 241. **Clam. - Low 9" Round Imp. Crab Claw Bowl - Radium Rarity**
 _____ 242. G - Great N Leaf Beads Sunflower Int. Nut Bowl
 _____ 243. M - Super N Leaf Beads Sunflower Int. Nut Bowl
 _____ 244. Reddish A - Dark N Leaf Beads Sunflower Int. Nut Bowl
 _____ 245. M - Stippled Ray Int. Leaf and Beads Nut Bowl
 _____ 246. A - N Star of David & Bows Bowl
 _____ 247. **M - 8" 8 Ruffle Head Dress Bowl - Cosmos & Cane Ext. - Beauty - Very Scarce**
 _____ 248. P.O. - 10 Ruffle Rain Drops Bowl - Los of Opal
 _____ 249. A - Great 9" Square 8 Ruffle Shape Chrysanthemum Bowl - Scarce Collar Base
 _____ 250. **A - 6¼" Radium Rood's Chocolates Pueblo Plate - Extremely Rare - Few Known**
 _____ 251. M - Dark 7½" Leaf Chain Plate Flat
 _____ 252. **W - 7" Persian Garden Plate - Pool of Pearls Ext.**
 _____ 253. B - 7½" Fenton Vintage Plate - Multi
 _____ 254. B - Illusion Card Tray Bon Bon - Scarce
 _____ 255. M - Ball FTD. Rd. 6" Lotus & Grape Bowl
 _____ 256. **M - Be Wise Owl Bank - Scarce**
 _____ 257. M - Barrel Lucky Bank
 _____ 258. M - Tall Atomizer Perfume - Pumpkin Irid.
 _____ 259. M - Heritage or Cape Cod Cruet w/Stopper

260. M - Little Barrel w/ Paper Label - Scarce
 261. A - Mlbg. 10" Satin Whirling Leaves Bowl - Ruffled
 262. M - Mlbg. 9½" Radium Whirling Leaves Bowl - Ruffled
 263. M - Ruffled Sail Boats Compote - Very Scarce
 264. P - Spat. Ft. 3 Fruits Medallion Bowl - Multi Satin Beauty
 265. M - 7½" Deep Rd. Peacock and Grape Spat. FTD. Nut Bowl - Rare
 266. B - 7½" Collar Base Peacock and Grape Deep Rd. Nut Bowl - Also Rare
 267. G - 7½" Spat FTD. I.C.S. Peacock and Grape Bowl
 267. - Lot A - Dark Red Fenton Holly Ruffled Bowl - Dark Irid.
 268. A - N Butterfly & Stippled Ray Bon Bon
 269. P - N Peacock at Fountain Spooner - Super Elec.
 270. M - Fenton Strawberry Bon Bon w/Strawberry Base
 271. B - Fenton Strawberry Bon Bon w/Pl. Base
 272. Gold Flashed Irid. 5" Estate Vase - Gold on Smoke?
 273. M - 6" Diamond Point Spiral - English Vase
 274. M - Pinwheel or Derby 6½" Dark Radium Vase
 275. M - 6" Woodland Vase - Great Satin Dark Irid.
 276. P - N Grape and Cable Hat Pin Holder - Good Ft.
 277. G - 9" Open Rose Imperial Stippled Plate
 278. M - 9" Open Rose Imperial Stippled Plate
 279. M - 9" Windflower Flat Plate - Multi Pink & Blues
 280. P.O. - 9½" Collar Base 6 Ruffle Flowers & Spades Bowl - Dugan - Rare Beauty
 281. B - 6 Ruffle Leaf Chain Bowl - Blues & Pinks Irid.
 282. B - Fenton Holly - Deep Bowl - Round Multi Irid.
 283. M - Radium 10 Ruffle Pony Bowl - Scarce Shape
 284. G - Ruffle Lotus & Grape 8¾" Bowl - Great Pc.
 285. G - 9" 6 Ruffle Feather Stitch Bowl - Rare Color
 286. B - 9" Low 3 in 1 Ribbon Tie Plate
 287. B - 8¾" Low Ruffle Round Up Plate or Bowl
 288. B - 9" Low 3 in 1 Fenton Holly Plate or Bowl
 289. A - 8¾" Low Ruffle Dugan Fanciful Plate or Bowl
 290. W - Constellation Ruffle Compote
 291. G - Radium 8½" Mlbg. Mayan Bowl - Round
 292. G - Radium 6¼" Mlbg. Cosmos Bowl - Rd.
 293. M - 474 Goblet By Imperial - Very Scarce
 294. M - Wine and Roses Pattern - Wine Goblet
 295. A - Westmoreland Checkerboard Water Goblet - Super Rare
 296. P - Dugan Tri-Corner C.R.E. 7" Bells and Beads Bowl
 297. I.G. - Brocaded Daffodil Card Tray Bon Bon
 298. I.G. - Brocaded Daffodil Compote
 299. Pastel - A.O. Daisy and Drape N Vase - Flared Top
 300. M - 8" Lions Plate - Pinks and Golds - Scarce Under Valued Plate
 301. P - Heavy Iris Dugan Tanard Water Pitcher - Very Scarce
 302. W - Wreathed Cherry Tumbler - Red Cherrys
 303. B - Apple Tree Tumbler - Great
 304. A - Beaded Shell Tumbler
 305. P - Rare Dugan Quill Tumbler
 306. P - Rare Imperial Chatelaine Tumbler
 307. A - Great Mlbg. Diamond Tumbler
 308. M - Radium Leaf Tiers Tumbler
 309. P - Dugan Heavy Iris Tumbler
 310. Lav. Purple - Fluffy Peacock Tumbler
 311. B - Orange Tree Orchard Tumbler
 312. M - Great Radium Dark Bouquet Tumbler
 313. B - Near Cut Inverted Strawberry Tumbler
 314. Smoke Lav. - 6½" Card Tray - 2 Sides Up - Grape & Cable Plate - B.W. Rarity
 315. A - 7¾" N Fruits and Flowers Card Tray B.W. Plate
 316. P - N 8" Ruffled Raspberry Int. FTD. Bowl - Daisy and Plume Ext. - Great
 317. M - Fenton Peacock and Urn 9" Plate - Pretty
 318. M - FTD. Flat 9¼" Grape and Cable Meander Plate
 319. A - 6 Ruffle Fenton Thistle Bowl - Super Pretty
 320. A - 6¼" Hand Grip on Side Campbell-Beesley, 1911 Adv. Plate - Rare
 321. M - Satin Mlbg. 10½" 6 Ruffle Bowl in Rosaline - Great
 322. A - 7¾" Mlbg. 3 in 1 Blackberry Wreath Bowl - Super
 323. G - 8¾" Mlbg. 3 in 1 Blackberry Wreath Bowl - Radium
 324. G - 7½" Mlbg. Blackberry Wreath Plate-Bowl? - 1¼" Off Table (Your Call)
 325. A - 7" Mlbg. Tri-Corner Blackberry Wreath Radium Bowl
 326. G - 6¼" Mlbg. 3 in 1 Radium Blackberry Wreath Bowl
 327. G - Mlbg. Multi Fruits Flowers Punch Bowl Base
 328. M - N Bushel Basket
 329. A - N 8 Sided Bushel Basket
 330. A - Mlbg. Tracery Lg. Bon Bon - 7½" x 5 - Oval - Rare
 331. Hat Pin - Big Butterfly
 332. Triad - Hat Pin
 333. Amber Smooth Ray Int. Petal Spittoon Ruffle like Rose Bowl?
 334. B - 7" Peacock and Dahlia Bowl - Berry Ext. - Ruffled
 335. Aqua - 7" Peacock and Dahlia Bowl - Plain Ext. - Rare
 336. B - 10" Fenton Vintage Grape Vt. Chop Plate? - Round - Low 2" Off Table
 337. B - Fenton 9¾" I.C.S. Stippled Rays Scale Band Bowl - Unlisted Beauty
 338. P.M. - N Grape and Cable Whiskey Jug & Stopper
 339. I.B. - N Fine Cut and Roses Rose Bowl - Fancy Int. - Super - Ft. Repair
 340. I.G. - N Drapery Vase - Beauty - Minor Toe Buffing
 341. G - 14¾" Mlbg. Hobnail Vt. Vase - Mid Size - 6" Pointed Top
 342. G - 15" Mlbg. Hobnail Vt. Vase - Mid Size - 6" Top
 343. P - N 12½" Mid Size Tree Trunk Vase - Multi Elec. Beauty - 5" Top
 344. M - Two Fruits Divided Bon Bon - Scarce
 345. G - Fenton Vintage Fernery Bowl - Scarce Color
 346. G - 10" N Collar Base Wishbone Bowl - B.W. Ext.
 347. G - 9½" N P.C.E. Wishbone Bowl - Pl. Ext. - Scarce



- _____ 348. B - 10" 6 Ruffle Persian Medallion Bowl - Scarce Size
- _____ 349. A - N P.C.E. Greek Key Bowl w/B.W. - Scarce Shape
- _____ 350. **Amberina - 10½" 3 in 1 Little Flowers Bowl - Very Rare Color & Size**
- _____ 351. P - N Poinsettia and Lattice FTD. Bowl
- _____ 352. B - Ruffle Embroidered Mums Bowl - Near Elec.
- _____ 353. B - Spat. FTD. Near Elec. Sunflower Bowl N
- _____ 354. **B.A. - Formal Hat Pin Holder - Very Desirable**
- _____ 355. **P.O. - 9" Dome Base Ski-Star Hand Grip Plate**
- _____ 356. **P.O. - 9" Dome Base Border Plants Hand Grip Plate**
- _____ 357. P.O. - 9" Dome Base C.R.E. Soutache Plate
- _____ 358. P.O. 9½" Collar Base Garden Path Vt. Round Bowl - Soda Gold Ext.
- _____ 359. M - 8¾" Collar Base Garden Path Vt. Bowl - Round
- _____ 360. **M - Mlbg. 5½" Vintage (Hobnail Back) Sm. I.C.S. Bowl - Rare**
- _____ 361. A - Mlbg. 8½" 3 in 1 Grape Wreath Vt. Bowl w/8 pt. Star
- _____ 362. M - Mlbg. 8½" 3 in 1 Grape Wreath Vt. Bowl w/8 pt. Star
- _____ 363. A - Mlbg. 8½" 6 Ruffle Grape Wreath Vt. Bowl w/8 pt. Star - Radium
- _____ 364. **G - Mlbg. 7" 6 Ruffle Grape Wreath Vt. Bowl w/4 pt. Feathered Leaf**
- _____ 365. **G - Mlbg. 5" C.R.E. Deep Grape Wreath Vt. Bowl w/Clover & Feather**
- _____ 366. G - N 4½" Rd. Singing Birds Bowl
- _____ 367. **M - Stippled Rambler Rose Dugan Nut Bowl**
- _____ 368. G - N Jack-in-the-Pulpit Vase - Very Scarce - 7¼" Tall
- _____ 369. M - 6" Fenton Ribbed J.I.P. Vase
- _____ 370. **M - Dark Radium 5¼" Imperial Thumbprint & Oval Vase - Super**
- _____ 371. **M - Mini Stippled Serpentine Rose Cream Pitcher**
- _____ 372. G - P.C.E. N Smooth Bk. Strawberry Bowl - Scarce
- _____ 373. B - 7" Ruffled Mirrored Lotus Bowl - Neat Pattern
- _____ 374. B - N Drapery Rose Bowl - Very Scarce
- _____ 375. **P.O. - Honeycomb Rose Bowl**
- _____ 376. **A - Mlbg. Hobnail Swirl Rose Bowl - Multi Irid.**
- _____ 377. M - Mlbg. Hobnail Rose Bowl - Dark
- _____ 378. B - P.C.E. Rib Bk. Good Luck Bowl - Multi Elec.
- _____ 379. M - P.C.E. Rib Bk. Stippled Good Luck Bowl
- _____ 380. **M - 8" Super & Rare Illinois Soldiers' and Sailors Home Plate**
- _____ 381. Clam - 9" Orange Tree Plate - Scarce
- _____ 382. **B - 9" 3 in 1 Ragged Robin Bowl - Rare Color**
- _____ 383. M - 9" 3 in 1 Ragged Robin Bowl - Scarce
- _____ 384. P - 7½" C.R.E. Fishscale & Beads Plate - Low Bowl
- _____ 385. **A - N Harvest Poppy Compote - Very Rare**
- _____ 386. Radium - A 10¼" Mlbg. Peacock Low Ruffle Bowl
- _____ 387. Radium - A 9" Mlbg. 3 in 1 Peacock Bowl - Super
- _____ 388. G - 10" Mlbg. 3 in 1 Peacock and Urn Bowl - Satin
- _____ 389. A - Mlbg. 5½" I.C.S. Peacock and Urn Bowl
- _____ 390. **A Mlbg. Lg. Poppy Compote - Great Find**
- _____ 391. P - 10½" 8 Ruffle Dugan Heavy Grape Bowl
- _____ 392. P - 11½" 8 Ruffle Victorian Bowl - Neat Shape & Scarce
- _____ 393. **M - Poppy Show Plate - 9½" Flat - Gold Irid. Pink Hi-Lites**
- _____ 394. P - N Wishbone Footed Plate - Pretty & Very Desirable
- _____ 395. G - N 9" Strawberry Plate - Smooth Back
- _____ 396. **B - 9" Heart & Vine Plate - Dugan Blue**
- _____ 397. W - 10¼" N Peacock and Urn I.C.S. Bowl
- _____ 398. M - 9" N Peacocks Rib Bk. Plate - Very Popular
- _____ 399. **B - 9" N Stippled Peacocks Rib Bk. Plate - Great One**
- _____ 400. **M - 9" Nippon Flat Plate - Pinks, Blues & Greens - Very Scarce**
- _____ 401. Smoke - 6" 6 Ruffle Rococo Bowl
- _____ 402. M - 6" 6 Ruffle - Rococo Bowl
- _____ 403. A - Dugan Holly Tri-Corner Nappy - Super
- _____ 404. A - 8½" 8 Ruffle Fenton Wild Blackberry Bowl - Rare
- _____ 405. P.M. - C.R.E. Dugan Question Mark Compote - Georgia Belle Ext.
- _____ 406. **A - 6¾" N Leaf Column Squatty Vase - 5½" Top - Super**
- _____ 407. **B - 8¾" N Drapery Vt. Vase - Radium Rarity**
- _____ 408. **G - Large Size Tornado 6¼" Vase - A Beauty**
- _____ 409. **M - 5½" Ruffle Imperial File Vase - Whimsey - Super Rare**
- _____ 410. **Dark - P - Corn Vase - Flower Base - Top of Line - Elec. Hi-lites**
- _____ 411. Radium M - Daisy Cane & Button Compote
- _____ 412. Radium M - Asters Compote - Rare Find
- _____ 413. Dark A - N Fern Compote - Very Scarce
- _____ 414. **Dark A - N Blackberry and Rays Rare Compote**
- _____ 415. B - I.C.S. Plaid Bowl - Seldom Offered
- _____ 416. A - N 8 Ruffle Smooth Bk. Strawberry Bowl - Very Nice
- _____ 417. P - N 8 Ruffle Rib Bk. Stippled Strawberry Bowl
- _____ 418. **P - Dome Base 9" Dugan Crimped - Stippled Petals - Bowl - Super Find**
- _____ 419. B - Collar Base Ruffled Dragon & Lotus - Just Beautiful
- _____ 420. **RARE RARE - Red - 7" Fenton Stippled Rays, Ext. Scale Band Plate**
- _____ 421. P - 6½" Plain Bk. Wishbone & Spades Plate
- _____ 422. **Lav. A - 6½" Davidsons Society Chocolates Hand Grip Plate**
- _____ 423. **B - 7¾" 12 Sided Pine Cone Plate - Rare Size & Color**
- _____ 424. **P.M. - 9½" Collar Base Peacock and Grape Plate**
- _____ 425. G - 8½" Collar Base Ruffle Peacock and Grape Bowl
- _____ 426. P - Base, Red Sides - 8½" Collar Base Peacock and Grape Bowl - Ruffled
- _____ 427. B - 8½" Collar Base Peacock and Grape Bowl - Super Irid
- _____ 428. Reddish Slag - 8½" Collar Base Peacock & Grape Bowl
- _____ 429. Cobalt B - 10" FTD. 8 Ruffle Water Lily Bowl
- _____ 430. B - 8¾" Round Ball FTD. Little Fishes Bowl - Great
- _____ 431. **Radium Mlbg. Deep Night Stars Bon Bon - Very Scarce Beauty**
- _____ 432. **P - Rosalind Vt. 6 Ruffle Compote - Beautiful Satin Rarity**
- _____ 433. M - Radium Mlbg. 8" Tri-Corner Holly Sprig Bowl
- _____ 434. A - Radium Mlbg. 10" 6 Ruffle Primrose Bowl - Super
- _____ 435. M - Radium Mlbg. 6 Ruffle, Flute Compote - Very Scarce

- _____ 436. A - Mlbg. Radium 9 $\frac{3}{4}$ " Zig Zag Bowl - A Beauty
 _____ 437. B - Grape Arbor Whimsey Hat From Tumbler - Scarce
 _____ 438. B - 6 $\frac{3}{4}$ " Fenton 4 Ruffle Briar Patch Hat Shape Bowl - Rare
 _____ 439. G - 7 $\frac{1}{2}$ " Ball FTD. 8 Ruffle Horse Medallion Bowl
 _____ 440. Smoke - 9" Imperial Shell Plate - Super
 _____ 441. Rare Radium G - 9" Mlbg. Tri-Corner Fleur Delis - Dome FTD. - Base Chip - No Harm
 _____ 442. G - Satin Mlbg. 10 $\frac{1}{4}$ " 3 in 1 Seaweed Bowl - Super Satin Beauty
 _____ 443. Radium Mlbg. M - 3 in 1 Many Stars Bowl - Great Find
 _____ 444. Radium Mlbg. A - 6 Ruffle Nesting Swan Bowl
 _____ 445. Emer. G - 9" Four Flowers Vt. Plate - Rare
 _____ 446. P - N 9 $\frac{1}{4}$ " Rose Show Plate - Multi Elec.
 _____ 447. A - Radium Mlbg. Strawberry Wreath Compote
 _____ 448. A - Radium Mlbg. 6 Ruffle Courthouse Bowl
 _____ 449. B - N Poppy Pickle Dish - Multi Elec.
 _____ 450. G - Satin I.C.S. Mlbg. Trout & Fly Bowl
 _____ 451. B - 9 $\frac{1}{4}$ " Captive Rose Plate
 _____ 452. A - 9" Captive Rose Plate - Very Nice
 _____ 453. G - Mlbg. 9 $\frac{1}{2}$ " 6 Ruffle Whirling Leaves Bowl
 _____ 454. G - N Tri-Corner Leaf & Beads Bowl - Stippled Ray Int. Bowl - Scarce Shape
 _____ 455. P - Scroll and Embossed Imp. Plate - Super
 _____ 456. A.O. - Marigold Overlay N Leaf and Beads Nut Bowl - Very Rare
 _____ 457. P - Leaf and Beads N Nut Bowl - Pl. Int. - Very Nice
 _____ 458. Rare Dark A - N Leaf and Beads, Beaded Round Top Bowl - A Beauty
 _____ 459. Super P - N Leaf & Beads Tri-Corner Bowl - Sunflower Int.
 _____ 460. Radium - M - Mlbg. 5 $\frac{1}{2}$ " Rd. Deep Peacock Proof Bowl
 _____ 461. A - Satin Mlbg. Sea Coast Pin Tray - Hot Item
 _____ 462. Beautiful Dark A - Springtime Butter Dish w/Lid
 _____ 463. B - N Ruffle Rib Bk. Stippled Peacocks Bowl
 _____ 464. P.M. - Daisy Web Hat Shape Bowl - Scarce Pastel Beauty
 _____ 465. A - Ruffle Concord Bowl - Popular Pattern - Scarce
 _____ 466. Smoke - 9" Radium Imp. Parlor Panels Vase - Beauty
 _____ 467. P - Target 7 $\frac{1}{2}$ " Squatty Vase - 3 $\frac{7}{8}$ " Base - 6 $\frac{1}{2}$ " Star Shape Top - Wow!
 _____ 468. Powder Bluish - 7 $\frac{1}{2}$ " Rd. Cherry Circles, 2 hdl. Bon Bon - Beautiful Base Color - Rare
 _____ 469. Pumpkin Irid. M - N Basket of Roses Stippled Bon Bon - Rare
 _____ 470. B - Fenton Daisy Bon Bon - Seldom Seen
 _____ 471. B - 6 $\frac{3}{4}$ " 6 Ruffle Flared Out Lions Bowl - Looks Red & Purple Under Lite - Multi Base Color
 _____ 472. M - Dugan Dome Base 10 Ruffle Weeping Cherry Bowl - Rarity
 _____ 473. M - Dugan Five Hearts Rd. Top Compote - Shaped Like Christmas Compote
 _____ 474. B - N Multi Elec. Hearts and Flowers Compote - A Beauty
 _____ 475. P - N Blossomtime Compote - Extra Nice
 _____ 476. Red A - 9" N Stippled Three Fruits Plate - Rib Bk. - Neat Plate
 _____ 477. M - 9" N Stippled Three Fruits Plate - Rib Bk.
 _____ 478. G - Round 8" Lovely Bowl - Leaf & Beads Ext. - Need I Say More
 _____ 479. G - Dome Base N 8 Ruffle Oetet Bowl - Great Rarity
 _____ 480. P - Dugan Rain Drops Crimp Banana Shape Bowl
 _____ 481. B - I.C.S. Orange Tree w/Trunk Bowl - Very Pretty Irid.
 _____ 482. B - Orange Tree Loving Cup - Great
 _____ 483. Dark A-Dugan Amaryllis Mini Compote - Tri Cornered
 _____ 484. Lav. A - Imperial Scrolled Embossed Mini Compote
 _____ 485. Radium A - Mlbg. Leaf & Little Flowers Rd. Compote
 _____ 486. Radium M - Mlbg. Leaf & Little Flowers Ruffle Compote
 _____ 487. Radium A - Mlbg. Peacock Tail Vt. Ruffle Compote
 _____ 488. Radium M - Mlbg. Peacock Tail Vt. Ruffle Compote
 _____ 489. Radium G - Mlbg. Boutonniere Ruffle Compote
 _____ 490. P - Dugan C.R.E. Tri-Corner Flowers & Frames Bowl
 _____ 491. Super Radium Elec. - P - Imp. Grape 8 $\frac{1}{2}$ " Bowl - Base Buff
 _____ 492. P - Imperial Ruffle Pansy Bowl - Super
 _____ 493. M - 8 Ruffle Coral Bowl - Scarce
 _____ 494. B.O. - Westmoreland File & Fan Compote - Super Rarity
 _____ 495. I.B. - 2 Sides Up Shape, 3 Row Open Edge Bowl
 _____ 496. Lav. A - Spat. FTD. Three Fruits Medallion Bowl - Purple, Bronze & Green Irid.
 _____ 497. B - Sm. Spat. FTD. Stag & Holly Ruffle Bowl - Super
 _____ 498. A - Spat. FTD. - I.C.S. Peacock and Grape Bowl
 _____ 499. G - Collar Base I.C.S. Peacock and Grape Bowl
 _____ 500. M - Collar Base I.C.S. Peacock and Grape Bowl
 _____ 501. Super B - Tankard - Lattice and Grape - Heat Crack, Top of Handle

*** Few Unlisted Items Sold at End of Auction ***

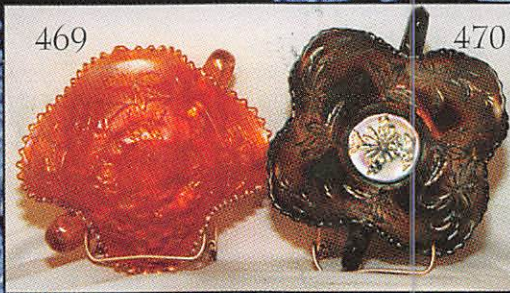
THANK YOU
 WE APPRECIATE YOUR BUSINESS!
 BOTH BUYER AND SELLER
 EARLY BIRD 1998 CARNIVAL CALENDAR
 CARNIVAL GLASS CENTER
 BOONVILLE, MO

 MARCH 21, 1998
 APRIL 10 & 11, 1998
 MAY 9, 1998
 SEPTEMBER 19, 1998

 Respectfully
Mickey Reichel



459 458



469 470



432 414



TOP: 305-306-307-232
 BOTTOM: 312-302-308-84

TOP: 487-486-488
 BOTTOM: 484-489-485

TOP: 274-272-110-275-273
 BOTTOM: 370-369-409

MICKEY REICHEL
AUCTION COMPANY
 DIRECT MAIL TO:
 516 THIRD STREET
 BOONVILLE, MO
 65233



SPECIAL INVITATION TO:

