



BURNS

AUCTION SERVICE

Carnival Glass Auction “The Markley Collection”

Friday & Saturday,
February 27 & 28, 1998

Friday: Auction - 6:30 pm,
preview - 4:00 pm (lots 1 - 200)

Saturday: Auction - 9:30 am,
preview - 8:00 am (Lots 201 - end)

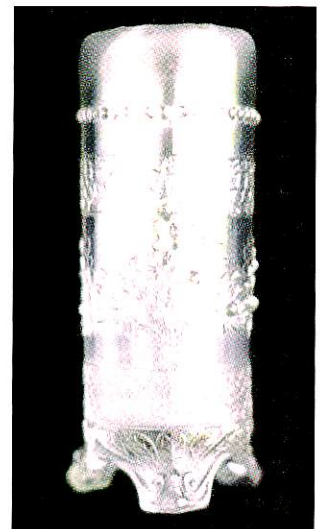
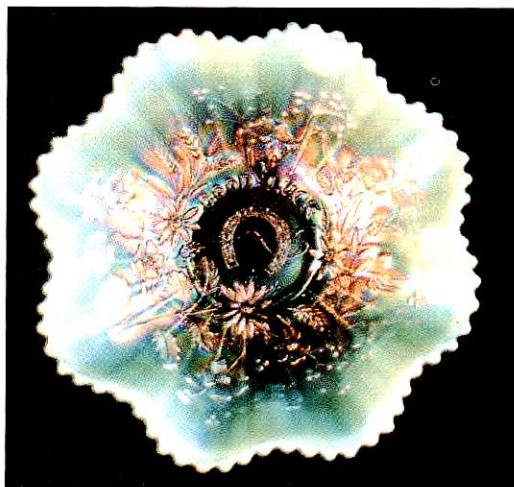
at the

Holiday Inn - Springfield

383 E. Lessel Lane, Springfield, OH 45505
*(Exit 54 off I-70 at Cedarville Exit: North on Exit to BP
Gas Station, then take a right, then right at their sign)*

(937) 323-8631

for reservations only: 1 - (800) HOLIDAY



Licensed & Bonded by the Department of
Commerce in favor of the State of Ohio

Auctions like this are the reason we do what we do. We are pleased to start our 1998 major auction schedule by selling the collection of Mrs. Mildred Markley from Springfield, Ohio. Mrs. Markley and her late husband William started collecting back in the 1960's. They bought what they liked through the years and ended up with one of those collections that not many people had heard about, but contained a number of items that you just don't see for sale every day. There is definitely something here for everyone and all who come will be pleased with what they see. Hope to see you there!

The Holiday Inn - Springfield will host the event. The facility has a Holidome and is located just off I-70 at Exit 54 - the Cedarville Exit. You can make your reservations by calling motel direct at (937) 323-8631 or by calling 1-800-HOLIDAY, for reservations only. It's a new facility for us and if everything works out well we will be returning for future business. Get your reservations ASAP and be sure to mention Burns Auction.

Mail bids (as well as bidding by all other methods) are due by Wednesday, February 25, 1998. Please remember - Tom will still be in transit from the Florida trip. So if you need assistance contact O'Bill or Billy.

P.S. Be aware that our schedule will be a bit busier than last year so keep up with us on our web site.

CHECK OUT BURNS AUCTION SERVICE ON THE WEB!

Visit our new Web site for information on upcoming auctions, complete auction listings and photos of auction highlights. You can e-mail your bids or requests for information.

<http://zeus.kspress.com/woodsland/burnsauction> email: brnzauctsv@aol.com

Burns Auction Service

Tom Burns
P.O. Box 608
Bath, New York 14810
(607) 776-7942

Bill Richards
44 Water St., Poland, OH 44514
(330) 757-2001
FAX (330) 757-4917

Bill Richards, III
2253 Country Lane
Poland, OH 44514
(330) 755-2620

Maid Bids honored under the following conditions:

1. No deposit required. Bidders will take full responsibility to honor any and all bids we execute for them. Payment in full plus postage and handling required after notification and before we ship any item to them.
2. Items are bid on in perfect condition with average or above average iridescence OR as listed in the brochures. Bids will not be carried out when damage on an item has been found during the auction. **PEOPLE PRESENT AT AUCTION ARE RESPONSIBLE FOR FINDING ANY PINHEADS, WEAR, SPOTTINESS, MANUFACTURER'S DEFECTS OR ANY OTHER MINOR FLAWS, ETC.**
3. Successful bidders will be notified by collect call from the auctioneer (so be sure to include phone number).
4. Phone inquiries about the glass or any other questions are welcome.
5. If you have some other person at the auction bidding for you, they must pay for the item before taking it.
6. Any terms or conditions given the day of the auction will supersede any previously published information.
7. Mail, Email, FAX and Phone bids due by Wednesday, Feb. 25, 1998.

- | | |
|--|--|
| <p>____ 1. M'burg Holly Sprig Round 2 Handled Bon Bon - Amy. (nice radium finish)</p> <p>____ 2. 10" M'burg Rays and Ribbons Bowl with 3 in 1 Edge - Green (satiny - average irid.)</p> <p>____ 3. 10" M'burg Primrose 6 Ruffled Bowl - Mari. (small chip on one point; nice satiny example)</p> <p>____ 4. M'burg Boutiniere Stemmed 6 Ruffled Compote - Green (very desirable; nice radium finish)</p> <p>____ 5. M'BURG PIPE HUMIDOR - DK. MARI. (EXTREMELY RARE AND SUPER DESIRABLE; HAS GREAT IRID.; A VERY FINE EXAMPLE OF A SUPER MILLERS-BURG VARIETY)</p> <p>____ 6. M'burg Diamonds 7 pc. Water Set - Green (super example for this set; typical manuf. peeling on edge of base)</p> <p>____ 7. M'burg Diamonds 7 pc. Water Set - Amy. (another nice set; great color and irid.; very desirable)</p> <p>____ 8. M'burg Diamonds Tumbler - Amy. (nice gold irid.)</p> <p>____ 9. M'burg Feather and Heart Tumbler - Dk. Mari. (nice dark color; satiny irid.)</p> <p>____ 10. M'BURG MORNING GLORY TUMBLER - GREEN (SUPER, SUPER ITEM WITH GREAT COLOR, IRID. AND DETAIL)</p> | <p>____ 11. M'BURG HANGING CHERRIES TUMBLER - GREEN (VERY SCARCE AND VERY DESIRABLE; NICE IRID.)</p> <p>____ 12. M'BURG PERFECTION TUMBLER - AMY. (VERY SCARCE AND ANOTHER VERY DESIRABLE ITEM)</p> <p>____ 13. 10" M'burg Hanging Cherries Large Ice Cream Bowl - Amy. (super, super satiny example; nice bright irid.)</p> <p>____ 14. 7 1/4" M'burg Hanging Cherries Ice Cream Shaped Bowl - Amy. (another really nice example)</p> <p>____ 15. M'BURG HANGING CHERRIES HANDLED MILK PITCHER - AMY. (EXTREMELY RARE AND VERY, VERY DESIRABLE; ABOUT AS PERFECT AS THESE GET)</p> <p>____ 16. M'BURG HANGING CHERRIES 4 PC. TABLE SET - MARI. (VERY RARE SET; COLOR IS JUST A TAD LIGHT - TOUGH TO FIND A PERFECT SET)</p> <p>____ 17. 7 1/2" M'burg Blackberry Wreath 6 Ruffled Bowl - Amy. (nice satiny finish)</p> <p>____ 18. 10 3/4" M'burg Nesting Swan 6 Ruffled Bowl - Lt. Mari. (light satiny finish - good condition)</p> <p>____ 19. 9 1/2" M'burg-Nesting Swan 6 Ruffled Bowl - Green (satiny finish; some damage on edge)</p> |
|--|--|

- _____ 20. **M'BURG DEEP GRAPE ROUND FLARED STEMMED COMPOTE - BLUE (EXTREMELY RARE COLOR FOR THIS VERY RARE ITEM; ONE OF TWO KNOWN IN THIS SHAPE; GREAT COLOR AND BRIGHT SATINY IRID.)**
- _____ 21. **M'BURG LEAF AND LITTLE FLOWERS FLARED COMPOTE - MARI. (RADIUM AND VERY DESIRABLE; REALLY NICE)**
- _____ 22. **10 1/2" M'BURG WHIRLING LEAVES 6 RUFFLED BOWL - AMY. (PROBABLY ONE OF THE BETTER SATINY EXAMPLES YOU WILL EVER SEE - REALLY NICE)**
- _____ 23. 10" M'burg Whirling Leaves 6 Ruffled Bowl - Green (satiny; irid. is a little bit light in center)
- _____ 24. 8" M'burg Mayan Ice Cream Shaped Bowl - Green (radium and a beauty)
- _____ 25. **M'BURG DOLPHINS COMPOTE WITH ROSALIND INTERIOR - AMY. (ANOTHER EXTREMELY RARE AND DESIRABLE; A BEAUT WITH GREAT DETAIL AND COLOR; ABSOLUTELY PERFECT)**
- _____ 26. **8 3/4" M'BURG BIG FISH BOWL WITH 3 IN 1 EDGE - DK. MARI. (RADIUM AND RARE; REALLY NICE IRID.)**
- _____ 27. **9 3/4" M'BURG TROUT AND FLY 6 RUFFLED BOWL - AMY. (VERY SCARCE; IRID. IS LIGHT IN CENTER)**
- _____ 28. 8 1/2" M'burg Grape Wreath Variant 6 Ruffled Bowl - Green (radium and very desirable)
- _____ 29. 7 3/4" M'burg Strawberry Wreath Variant 6 Ruffled Bowl - Mari. (radium and very scarce; nice)
- _____ 30. **6 3/4 - 7" M'BURG LETTERED COURTHOUSE ICE CREAM SHAPED BOWL - AMY. (SUPER, SUPER EXAMPLE WITH GREAT RADIUM FINISH)**
- _____ 31. **8 3/4" M'BURG HOLLY SPRIG 6 RUFFLED CRIMPED EDGE BOWL - AMY. (A SUPER RADIUM EXAMPLE WITH GREAT IRID.)**
- _____ 32. **9 1/2" M'BURG FLEUR DE LEI ICE CREAM SHAPED BOWL - AMY. (SCARCE WITH RADIUM FINISH AND GOLD HIGHLIGHTS)**
- _____ 33. **9 3/4" M'BURG MANY STARS BOWL WITH 5 POINTED STAR AND 3 IN 1 EDGE - AMY. (RADIUM AND RARE; VERY ATTRACTIVE)**
- _____ 34. 7 1/4" M'burg Little Stars 6 Ruffled Bowl - Amy. (scarce; nice satiny irid.)
- _____ 35. **M'BURG MULTI FRUITS AND FLOWERS FLARED 11 PC. PUNCH SET - MARI. (RARE AND DESIRABLE SET; NICE RADIUM FINISH)**
- _____ 36. **9" M'BURG PEACOCK LARGE FLARED MASTER BERRY BOWL - GREEN (RARE COLOR; RADIUM WITH GREAT IRID., A BIT LIGHT ON BIRD)**
- _____ 37. **9" M'BURG PEACOCK LARGE FLARED MASTER BERRY BOWL - PASTEL MARI. (RARE AND DESIRABLE; NICE IRID.)**
- _____ 38. **9" M'BURG PEACOCK LARGE FLARED MASTER BERRY BOWL - AMY. (RADIUM AND VERY SCARCE; IRID. A BIT LIGHT ON EDGE)**
- _____ 39. **(6) 5 1/4" M'BURG PEACOCK IND. FLARED BERRY BOWLS - AMY. (ALL HAVE SUPER RADIUM FINISH; SELLING CHOICE)**
- _____ 40. **M'BURG HOBNAIL SPITTOON - AMY. (RARE AND VERY DESIRABLE; A SUPER EXAMPLE)**
- _____ 41. **10 1/4" M'BURG SEAWEED BOWL WITH 3 IN 1 EDGE - LT. MARI. (VERY SCARCE AND DESIRABLE PATTERN)**
- _____ 42. 8 1/4" M'burg Blackberry Wreath Ice Cream Shaped Bowl - Amy. (super satiny finish)
- _____ 43. 8 1/4" M'burg Blackberry Wreath Round Flared Bowl - Mari. (nice satiny finish)
- _____ 44. Cambridge Double Star Tumbler - Green (scarce; has Mari. interior)
- _____ 45. Cambridge Buzz Saw Large Cruet and Crystal Flashed Stopper - Green (rare item with correct stopper; has hairline around neck)
- _____ 46. Cambridge Inverted Feather Stemmed 6 Ruffled Parfait - Mari. (nice dark color)
- _____ 47. **CAMBRIDGE INVERTED FEATHER HANDLED COVERED CRACKER JAR - GREEN (VERY SCARCE AND DESIRABLE; NICE COLOR)**
- _____ 48. 6 3/4" Imperial Jewels Deep Round Bowl - Amy. (signed with Iron Cross)
- _____ 49. Imperial Robin Handled Mug - Dk. Mari. (nice color and irid.)
- _____ 50. **IMPERIAL HOMESTEAD NU ART CHOP PLATE - PUR. (RARE AND SUPER; VERY DESIRABLE AND SIGNED)**
- _____ 51. **9 1/4" IMPERIAL EMBOSSED SCROLL FLAT PLATE - PUR. (RARE AND DESIRABLE; SUPER, SUPER IRID.)**
- _____ 52. 8" Imperial Embossed Scroll 8 Ruffled Bowl - Pur. (really nice irid.)
- _____ 53. Imperial Embossed Scroll 8 Ruffled Stemmed Compote - Pur. (very scarce; super color and irid.)
- _____ 54. 8" Imperial Embossed Scroll Round Flared Bowl - Pastel Mari. (super irid. - great color)
- _____ 55. **IMPERIAL FLUTE TOOTHPICK HOLDER - BLUE (VERY RARE AND VERY DESIRABLE; SUPER ITEM)**
- _____ 56. **IMPERIAL FLUTE TOOTHPICK HOLDER - MARI. / VASELINE (ANOTHER VERY RARE AND VERY DESIRABLE ITEM)**
- _____ 57. Imperial Flute Toothpick Holder - Pur. (super color and irid.)
- _____ 58. Imperial Flute Toothpick Holder - Green (scarce; perfect)
- _____ 59. Imperial Flute Toothpick Holder - Dk. Mari. (great color and irid.)
- _____ 60. **IMPERIAL FLUTE 7 PC. BERRY SET - PUR. (RARE SET WITH GREAT COLOR AND IRID.; NICE ITEM)**
- _____ 61. 8" Imperial Acanthus Deep Round Bowl - Green (pretty nice item)
- _____ 62. 9" Imperial Star of David 8 Ruffled Bowl - Green (scarce item; nice ; has smooth spot on edge)
- _____ 63. Imperial Cockatoo Wall Vase - Mari. (scarce item; nice)
- _____ 64. Imperial Columbia Domed 6 Ruffled Vase - Dk. Mari. (nice color)
- _____ 65. **IMPERIAL FASHION TUMBLER - PUR. (ABSOLUTELY FANTASTIC ITEM WITH GREAT IRID. THE BEST!)**
- _____ 66. Imperial Diamond Lace Tumbler - Pur. (really nice irid.)
- _____ 67. Imperial Star and File Tumbler - Dk. Mari. (nice color and irid.; small nick-on base)
- _____ 68. Imperial Crab Claw Tumbler - Mari. (scarce)
- _____ 69. Imperial 474 Tumbler - Dk. Mari. (super, super irid.)
- _____ 70. **IMPERIAL GRAPE 6 PC. WATER SET - PUR. (RARE AND DESIRABLE; GREAT IRID.)**
- _____ 71. Imperial Grape Stemmed Wine Glass - Pur. (super irid. with great color)

- ___ 72. Imperial Grape 7 pc. Water Set - Dk. Mari. (nice dark color)
- ___ 73. Imperial Grape Cup and Saucer - Helios Green (scarce; nice color and irid.)
- ___ 74. Imperial Grape Cup and Saucer - Dk. Mari. (really nice color and irid.)
- ___ 75. **8 1/2" IMPERIAL HEAVY GRAPE FLAT PLATE - PUR. (SUPER COLOR AND IRID.; REALLY NICE)**
- ___ 76. Imperial Grape Stemmed Goblet - Mari. (nice color)
- ___ 77. (2) Imperial Fieldflower Tumblers - Dk. Mari. (nice color; selling choice)
- ___ 78. Imperial Octagon Tumbler with Manuf. Ground Base - Dk. Mari. (nice color)
- ___ 79. Imperial Windmill Tumbler - Dk. Mari. (really nice color and irid.)
- ___ 80. **IMPERIAL WINDMILL HANDLED MILK PITCHER - SMOKE (VERY RARE AND VERY DESIRABLE; SUPER COLOR)**
- ___ 81. Imperial Soda Gold Tumbler - Smoke (very scarce; really nice irid.)
- ___ 82. Imperial Soda Gold Tumbler - Dk. Mari. (nice color and irid.)
- ___ 83. Imperial Poinsettia Handled Milk Pitcher - Dk. Mari. (super color and really nice irid.)
- ___ 84. 7" Imperial 3 in 1 Flat Plate - Mari. (super irid. with the exterior pattern)
- ___ 85. **7 1/4" IMPERIAL LUSTRE ROSE FTD. DEEP ROUND BOWL - PUR. (ABSOLUTELY SUPER COLOR AND IRID. - NICE)**
- ___ 86. Imperial Pansy Ruffled Relish Tray - Pur. (another super colored item; nice)
- ___ 87. 5 1/2" Imperial Miniature Morning Glory Flared Vase - Helios Green (scarce; nice item)
- ___ 88. 5" Imperial Miniature Morning Glory Flared Vase - Mari. (nice shape)
- ___ 89. Imperial Frosted Block Stemmed Flared Compote - Clam. (very scarce shape)
- ___ 90. **8" IMPERIAL STRETCH WIDE PANEL FLAT PLATE - RED (SUPER COLOR AND SUPER IRID.; REALLY NICE)**
- ___ 91. Imperial Tiger Lily Tumbler - Dk. Mari. (really nice color)
- ___ 92. Imperial Lustre Rose Tumbler - Mari.
- ___ 93. 9 1/2" Imperial Star Medallion Flat Plate - Clamb. (really nice irid.)
- ___ 94. Dugan Beaded Basket - Mari.
- ___ 95. **DUGAN BUTTERFLY AND TULIP LARGE SQUARE FTD. BOWL WITH INVERTED FAN AND FEATHER EXTERIOR - PUR. (RARE AND VERY DESIRABLE; NICE MULTI-COLORED IRID.; GETTING TOUGH)**
- ___ 96. 8 3/4" Dugan Fanciful Low Ruffled Plate - Pur. (scarce; satiny, gold irid.)
- ___ 97. 8 3/4" Dugan Apple Blossom Twigs Low Ruffled Bowl / Plate - Blue (very scarce color; has nice satiny finish)
- ___ 98. 8 1/2" Dugan Four Flowers Deep Flared Bowl with Soda Gold Exterior - Amy. (nice satiny finish)
- ___ 99. 10 1/4" Dugan Four Flowers Ruffled 2 Sided Banana Dish - Pur. (very rare shape for this item; irid. is silvery)
- ___ 100. **DUGAN FLORAL AND GRAPE 7 PC. BULBOUS WATER SET - BLUE (VERY RARE SET IN THIS COLOR; NICE)**
- ___ 101. **DUGAN MAPLE LEAF 7 PC. WATER SET - PUR. (RARE AND DESIRABLE; NICE SATINY FINISH)**
- ___ 102. Dugan Maple Leaf Tumbler - Pur. (nice; satiny)
- ___ 103. Dugan Apple and Pear Large Oval Fruit Bowl - Amy. (very scarce color; really nice satin finish)
- ___ 104. Dugan Pastel Swan - Pur. (rare and desirable; a bit silvery)
- ___ 105. **DUGAN CHERRY WREATH 4 PC. TABLE SET - PUR. (EXTREMELY RARE SET TO FIND COMPLETE; SPOONER HAS BEEN SMOOTHED AT THE BASE)**
- ___ 106. **DUGAN CHERRY WREATH 7 PC. WATER SET - DK. MARI. (SUPER SCARCE AND DESIRABLE SET; REALLY NICE)**
- ___ 107. Dugan Vineyard 7 pc. Bulbous Water Set - Mari. (nice color esp. the tumblers)
- ___ 108. Dugan Twig Swung Bud Vase - Amy. (flake on base; scarce, nice example)
- ___ 109. Dugan Twig Swung Bud Vase - Mari. (nice example)
- ___ 110. **9" DUGAN ROUND UP FLAT PLATE - BLUE (RARE AND VERY DESIRABLE; TINY FLAKE ON BASE; SUPER SATINY)**
- ___ 111. 7 1/2" Dugan Six Petals 6 Ruffled Bowl - Pur. (really nice irid.)
- ___ 112. **8" DUGAN PANELLED CHERRIES 3 FTD. FLARED CRIMPED EDGE BOWL - PUR. (ABSOLUTELY SUPER IRID.; HAS SOME CHIPS UNDER FEET - BUT WHO CARES?)**
- ___ 113. Dugan Puzzle Round Handled Stemmed Bon Bon - Pur. (super example with nice irid.)
- ___ 114. 10" Dugan Spiralx Swung Vase - Pur. (absolutely fantastic irid. - a beauty! small chip on mold line)
- ___ 115. **6 3/4" DUGAN WISHBONE AND SPADES FLAT PLATE - PUR. (SCARCE; SUPER SATINY FINISH)**
- ___ 116. **6 1/4" DUGAN PODS AND POSIES FLAT PLATE - P. OPAL. (SUPER OPAL. - VERY ATTRACTIVE AND SCARCE)**
- ___ 117. 7" Dugan Bellflower 6 Ruffled Bowl - Pur. (super multi-colored irid.; nice)
- ___ 118. 8 3/4" Dugan Flowers and Frames Domed 10 Ruffled Bowl - Pur. (really nice example with multi-colored irid.)
- ___ 119. Dugan Wreath of Roses Rose Bowl - Mari. (nice example)
- ___ 120. **DUGAN GOD AND HOME TUMBLER - BLUE (VERY SCARCE AND DESIRABLE; NICE SATINY FINISH)**
- ___ 121. Dugan Stork and Rushes Tumbler with Beaded Top - Blue (very scarce; has super irid.)
- ___ 122. (2) Dugan Floral and Grape Tumblers - Blue (very scarce items; selling choice)
- ___ 123. Dugan Heavy Iris Tumbler - Amy. (super multi-colored irid.; a really nice example)
- ___ 124. Dugan Heavy Iris Tumbler - Amy. (satiny finish with average irid.)
- ___ 125. **DUGAN DAHLIA TUMBLER - WHITE (VERY SCARCE AND VERY DESIRABLE; SUPER IRID.)**
- ___ 126. Dugan Beaded Shell Handled Mug - Amy. (scarce; average irid.)
- ___ 127. Dugan Grape Delight 6 ftd. Rose Bowl - White (super irid.; has 2 minor chips on feet)
- ___ 128. Dugan Constellation Stemmed 6 Ruffled Compote - White (super desirable with great irid.)
- ___ 129. Dugan Constellation Stemmed 6 Ruffled Compote - Mari. (has a sorta radium finish)

- _____ 130. **DUGAN BROOKLYN BRIDGE 10 RUFFLED BOWL - DK. MARI. (SUPER EXAMPLE WITH GREAT MOLD WORK)**
- _____ 131. Dugan Golden Harvest 8 pc. Wine Set - Mari. (getting tougher to find these in sets)
- _____ 132. Dugan Windflower Handled Gravy Boat - Mari. (satiny finish)
- _____ 133. Dugan Big Basketweave Handled Flower Basket - Mari.
- _____ 134. Dugan Daisy Dear Jack in the Pulpit Hat Shape - Mari. (really great shape to this item)
- _____ 135. **DUGAN FIVE HEARTS DOMED RUFFLED BOWL - DK. MARI. (VERY RARE PATTERN; SUPER SATINY FINISH; REALLY NICE)**
- _____ 136. Dugan Double Stem Rose Domed 10 Ruffled Bowl - Mari. (satiny finish)
- _____ 137. 10" Dugan Cosmos Variant 6 Ruffled Bowl - Mari. (satiny finish)
- _____ 138. Dugan Garden Path Variant Deep 10 Ruffled Bowl - Lt. Mari. (satiny)
- _____ 139. 7" Dugan Fishscale and Beads Low 8 Ruffled Bowl - Lt. Mari.
- _____ 140. **DUGAN HARVEST FLOWER TUMBLER - DK. MARI. (VERY NICE EXAMPLE - DARKER THAN MOST)**
- _____ 141. **DUGAN JEWELLED HEART TUMBLER - DK. MARI. (SUPER EXAMPLE WITH GREAT IRID.)**
- _____ 142. Dugan Beaded Shell Tumbler - Dk. Mari. (really nice example; nice irid.)
- _____ 143. Dugan Windflower 10 Ruffled Bowl - Mari. (nice satiny finish)
- _____ 144. Dugan Pony 6 Ruffled Bowl - Mari. (nice satiny finish)
- _____ 145. Dugan Mary Ann Handled Vase - Dk. Mari. (really nice dark example)
- _____ 146. 7" Dugan Grapevine Lattice Low Ruffled Bowl - White (really nice irid.)
- _____ 147. 7 1/2" Dugan Single Flower Framed Crimped Edge Plate - P. Opal. (super opal.; scarce shape)
- _____ 148. Dugan Stippled Flower Tri-Cornered Bowl - P. Opal. (nice color and opal.)
- _____ 149. 7" Dugan Single Flower Framed 10 Ruffled Bowl - P. Opal. (nice opal.)
- _____ 150. Dugan Fan ftd. Gravy Boat - P. Opal. (very scarce; really nice opal. and irid.)
- _____ 151. Dugan Raindrops Domed 10 Ruffled Bowl with Keyhole Exterior - P. Opal. (very attractive example; really nice)
- _____ 152. Dugan Open Opals Tri-Cornered Crimped Edge Compote - P. Opal. (another super example - nice)
- _____ 153. Dugan Thumbprint Stemmed 8 Ruffled Compote - P. Opal. (super opal. and nice irid.)
- _____ 154. 8 1/2" Tall Dugan Pulled Loop Swung Vase - P. Opal. (nice opal. and irid.)
- _____ 155. **DUGAN DAISY AND PLUME OVAL RUFFLED FTD. BOWL - DK. P. OPAL. (SUPER OPAL. AND IRID.; ONE OF THE BETTER EXAMPLES)**
- _____ 156. Dugan Question Mark Stemmed Crimped Compote - Dk. P. Opal. (super example - nice)
- _____ 157. 8" Dugan Six Petals 6 Ruffled Bowl - Dk. P. Opal. (another super example)
- _____ 158. 10 1/2" Dugan Ski Star Large 6 Ruffled Bowl with Compass Exterior - P. Opal. (nice irid.)
- _____ 159. 9" Dugan Dogwood Sprays Domed 10 Ruffled Bowl - P. Opal. (very nice example; nice irid.)
- _____ 160. (2) Dugan Cherry Wreath Oval Ind. Berry Bowls - P. Opal. (scarce; selling choice)
- _____ 161. Dugan Panelled Cherries ftd. Deep 10 Ruffled Bowl - P. Opal. (really nice example; pattern on exterior)
- _____ 162. 6" Dugan Cherries Low Ruffled Sauce with Jewelled Heart Exterior - P. Opal. (scarce; opal. on edge)
- _____ 163. 8 1/2" Dugan Single Flower 10 Ruffled Bowl - P. Opal. (opal. on edge)
- _____ 164. 5 1/4" Tall Dugan Narrow Rib Tri-Cornered Crimped Edge Vase - P. Opal. (nice opal. and irid.)
- _____ 165. Dugan Stork and Rushes Handled Mug - Mari. (satiny; nice detail)
- _____ 166. Dugan Vintage Banded Handled Mug - Mari.
- _____ 167. Dugan Daisy and Lattice Tumbler - Mari. (irid. only on inside)
- _____ 168. Dugan Grapevine Lattice Tumbler - Mari. (sorta radium)
- _____ 169. Dugan Floral and Grape Tumbler - Dk. Mari. (rich color)
- _____ 170. Dugan Maple Leaf Tumbler - Dk. Mari. (super example)
- _____ 171. Dugan Rambler Rose Tumbler - Dk. Mari. (nice)
- _____ 172. Sowerby Thistle and Thorn ftd. Creamer - Mari.
- _____ 173. Sowerby Covered Hen on the Nest Butter Dish - Dk. Mari. (nice color; very scarce)
- _____ 174. Sowerby Prism Panels ftd. Flared Vase - Mari. (very scarce; nice color and irid.)
- _____ 175. **SOWERBY DAISY BLOCK ROWBOAT - DK. MARI. (SCARCE AND VERY DESIRABLE; NICE COLOR)**
- _____ 176. **9 1/2" AUSTRALIAN MAGPIE LARGE 12 RUFFLED BOWL - BLACK AMY. (VERY SCARCE AND HAS REAL NICE IRID.)**
- _____ 177. Finch & Co. Golden Wedding Pint Bottle with Labels, Cap and Shot Glass - Mari. (unusual with all the labels and shot glass; small hairline)
- _____ 178. **UNLISTED MINIATURE LAMP AND GLOBE - DK. MARI. (BASEBALL SIZED - VERY RARE)**
- _____ 179. Rooster Hatpin - Green (scarce; super irid. and nice)
- _____ 180. **7" TALL U.S. GLASS COSMOS AND CANE TALL STEMMED ROUND COMPOTE - WHITE (SUPER RARE ITEM - PERFECT WITH GREAT COLOR AND IRID.; REALLY NICE EXAMPLE; FROM THE DON MOORE COLLECTION)**
- _____ 181. U.S. Glass Palm Beach Tumbler - White (rare and desirable; frosty and attractive)
- _____ 182. **U.S. GLASS WHITE OAK TUMBLER - MARI. (RARE AND DESIRABLE; NICE IRID.; SMALL PINHEAD)**
- _____ 183. U.S. Glass Cosmos and Cane Tumbler - Dk. Mari. (very scarce; nice example)
- _____ 184. U.S. Glass Heart Band Handled Mug - Lt. Mari. (very scarce; really nice)
- _____ 185. **WESTMORELAND WILD ROSE SYRUP JUG - DK. MARI. (SUPER DARK EXAMPLE OF THIS RARE ITEM)**
- _____ 186. Westmoreland Little Bo Peep Handled Mug - Dk. Mari. (super example with nice detail)
- _____ 187. Westmoreland Prisms Handled Compote - Teal (very scarce; nice color)
- _____ 188. Westmoreland Prisms Handled Compote - Amy. (very scarce; really nice)
- _____ 189. Westmoreland Prisms Handled Compote - Dk. Mari. (really nice example; a beaut)
- _____ 190. Westmoreland Leaf Swirl Stemmed Ruffled Compote - Amy. (scarce; nice color)

- ____ 191. Westmoreland Estate Open Breakfast Sugar - Aqua (very rare color - nice)
- ____ 192. 6 1/4" Westmoreland Scales Flat Plate - Amy. (sorta silvery)
- ____ 193. Westmoreland File and Fan Stemmed Round Compote - P. Opal. (really nice example; nice opal. and irid.)
- ____ 194. 8" Westmoreland Daisy Wreath Deep Round Bowl - Mari. / Milk Glass (rare; desirable; lacks irid. in center)
- ____ 195. **8 1/2" WESTMORELAND DAISY WREATH 6 RUFFLED BOWL - BLUE OPAL. (RARE; DESIRABLE; NICE OPAL. ON TIPS)**
- ____ 196. **8 3/4" WESTMORELAND CAROLINA DOGWOOD DEEP ROUND BOWL - MARI. / MILK GLASS (SUPER EXAMPLE; GREAT COLOR AND IRID.)**
- ____ 197. Handled Beaded Purse - Dark (really nice item)
- ____ 198. N Waterlily and Cattail Tumbler - Dk. Mari. (great color; scarce)
- ____ 199. Dugan Waterlily and Cattail Tumbler - Dk. Mari. (great color; scarce)
- ____ 200. Fenton Waterlily and Cattail Tumbler - Dk. Mari. (great color; scarce)

START OF SECOND SESSION

- ____ 201. N Interior Swirl Tumbler - Dk. Mari. (nice color)
- ____ 202. N Grape and Gothic Arches Tumbler - Mari. (nice color)
- ____ 203. N Stretch Concave Diamond Tumbler - Celeste Blue (really nice color)
- ____ 204. N Enamelled Ground Cherries Tumbler - Blue (nice color and decoration)
- ____ 205. **N DANDELION TUMBLER - WHITE (VERY RARE AND DESIRABLE; PRETTY NICE COLOR)**
- ____ 206. N Dandelion Tumbler - Pur. (nice color; blue highlights)
- ____ 207. N Oriental Poppy Tumbler - Green (scarce; gold highlights)
- ____ 208. N Oriental Poppy Tumbler - Pur. (nice color)
- ____ 209. N Raspberry Tumbler - Green (nice color and irid.; has tiny manuf. split on edge)
- ____ 210. **N PEACH TUMBLER - ELEC. BLUE (SUPER MIRROR FINISH; ABSOLUTELY OUTSTANDING)**
- ____ 211. N Peacock at the Fountain Tumbler - Pur. (really dark color; nice irid.)
- ____ 212. N Peacock at the Fountain Tumbler - Dk. Mari. (super dark color and irid.; nice)
- ____ 213. N Acorn Burr Tumbler - Pur. (super example with Elec. Blue highlights)
- ____ 214. N Acorn Burr Tumbler - Dk. Mari. (super rich example with reds and blues)
- ____ 215. **N G & C TUMBLER - HOREHOUND (SUPER RARE COLOR; NICE)**
- ____ 216. N G & C Tumbler - Amy. (nice irid.)
- ____ 217. N Grape Arbor Tumbler - Pur. (nice dark color; super bright irid.)
- ____ 218. N Greek Key Tumbler - Pur. (nice with goldish highlights)
- ____ 219. N Springtime Tumbler - Dk. Mari. (super and very desirable)
- ____ 220. N Wishbone Tumbler - Mari. (nice pattern; scarce)
- ____ 221. N Singing Bird Tumbler - Olive Green (very rare and odd base glass color)
- ____ 222. N Singing Bird Tumbler - Green (nice, multi-colored satiny finish)

- ____ 223. N Singing Bird Handled Mug - Pur. (absolutely fantastic example; super)
- ____ 224. N Singing Bird Handled Mug - Mari. (nice color)
- ____ 225. **N DANDELION HANDLED MUG - AQUA OPAL. (ANOTHER SUPER EXAMPLE WITH FANTASTIC IRID. - WOW!)**
- ____ 226. N Beaded Cable ftd. Ruffled Rose Bowl with Ribbed Interior - Amy. (nice satiny finish)
- ____ 227. N Panelled Holly 2 Handled Round Candy Dish - Green (satiny; nice)
- ____ 228. N Graceful 6 Ruffled Vase - Green (satiny)
- ____ 229. N Wild Rose ftd. Flared Candy Dish with Ribbed Interior - Green (satiny)
- ____ 230. **N GOOD LUCK 8 RUFFLED BOWL WITH RIBBED EXTERIOR - AQUA OPAL. (HAS TO BE ONE OF THE FINEST EXAMPLES - ABSOLUTELY FANTASTIC)**
- ____ 231. **N GOOD LUCK 8 RUFFLED BOWL WITH RIBBED EXTERIOR - DARK ICE BLUE (ANOTHER FANTASTIC EXAMPLE; SUPER COLOR AND IRID.)**
- ____ 232. **N GOOD LUCK 8 RUFFLED BOWL WITH RIBBED EXTERIOR - ICE GREEN (EXTREMELY RARE COLOR - SUPER WITH GOLDISH HIGHLIGHTS)**
- ____ 233. **N GOOD LUCK BOWL WITH PIE CRUST EDGE AND RIBBED EXTERIOR - DK. PUR. (FANTASTIC ELEC. BLUE HIGHLIGHTS - WOW!)**
- ____ 234. N Good Luck Bowl with Pie Crust Edge and Ribbed Exterior - Mari. (odd item - dark on outside edge, light in center)
- ____ 235. **N GOOD LUCK 8 RUFFLED BOWL WITH RIBBED EXTERIOR - ELEC. BLUE (SUPER EXAMPLE WITH RED AND BLUE HIGHLIGHTS)**
- ____ 236. **N GOOD LUCK 8 RUFFLED BOWL WITH BASKETWEAVE EXTERIOR - GREEN (VERY SCARCE; REALLY NICE SATINY FINISH)**
- ____ 237. N Good Luck 8 Ruffled Bowl with Basketweave Exterior - Amy. (very scarce; really nice satiny finish)
- ____ 238. **N GOOD LUCK PLATE WITH BASKETWEAVE EXTERIOR - GREEN (RARE AND DESIRABLE; EXCELLENT FINISH)**
- ____ 239. **N GOOD LUCK PLATE WITH BASKETWEAVE EXTERIOR - PUR. (RARE AND DESIRABLE; FLAT WITH GOLD HIGHLIGHTS)**
- ____ 240. **N GOOD LUCK PLATE WITH BASKETWEAVE EXTERIOR - LT. (PASTEL) MARI. (LIGHT IN COLOR WITH REALLY NICE IRID.; HAS CHIP ON BOTTOM LEFT OF HORSESHOE)**
- ____ 241. N Octet Domed 8 Ruffled Bowl with Vintage Exterior - Amy. (very scarce pattern; nice satiny finish)
- ____ 242. N Star of David Domed 8 Ruffled Bowl with Vintage Exterior - Green (very scarce color for this item - nice)
- ____ 243. N Leaf and Beads ftd. Rose Bowl - Blue (scarce; nice color and irid.)
- ____ 244. N Leaf and Beads ftd. Rose Bowl - Aqua Opal. (nice item but is cracked)
- ____ 245. **N PEACOCKS 8 RUFFLED BOWL WITH RIBBED EXTERIOR - AQUA OPAL. (SUPER PASTEL EXAMPLE; NICE OPAL. AND IRID.)**
- ____ 246. **N PEACOCKS PLATE WITH RIBBED EXTERIOR - PUR. (NICE AND FLAT; NICE IRID., SATINY)**

- _____ 247. **N PEACOCKS PLATE WITH RIBBED EXTERIOR - WHITE (VERY SCARCE AND VERY DESIRABLE; NICE IRID.)**
- _____ 248. N Peacock at the Fountain Covered Sugar Bowl - Pur. (a super example; if ya need one - here it is! small chip inside lid)
- _____ 249. N Peacock at the Fountain Spooner - Pur. (really nice example; nice irid.)
- _____ 250. **N PEACOCK AT THE FOUNTAIN 4 PC. TABLE SET - DK. MARI. (REALLY SUPER SET - DARK AND WELL MATCHED)**
- _____ 251. **N PEACOCK AT THE URN 7 PC. ICE CREAM SET - WHITE (SUPER SCARCE SET; NICE COLOR AND IRID.)**
- _____ 252. N G & C 2 Handled Bon Bon with Basketweave Exterior - Pur. (nice satiny finish)
- _____ 253. **N G & C COVERED SWEETMEAT COMPOTE - PUR. (SUPER EXAMPLE WITH BRIGHT MULTI-COLORED IRID.)**
- _____ 254. N G & C Cup and Saucer with Basketweave Exterior - Pur. (rare and desirable; nice color and irid.)
- _____ 255. **N G & C VARIANT PLATE WITH BASKETWEAVE EXTERIOR - PUR. (OK - SO THIS HAS A RATHER SIZABLE FLAKE ON THE BASE - YOU DON'T LOOK AT THE BASE, YOU LOOK AT THE FRONT - YA GOTTA SEE THIS THING!)**
- _____ 256. N G & C Plate with Basketweave Exterior - Pur. (scarce and has satiny finish)
- _____ 257. N G & C Plate with Basketweave Exterior - Mari. (another nice satiny example)
- _____ 258. **N G & C COVERED CRACKER JAR - DK. MARI. (NICE DARK COLOR WITH REALLY NICE IRID.)**
- _____ 259. N Petals Stemmed 8 Ruffled Compote - Amy. (satiny and scarce)
- _____ 260. N Daisy and Plume 3 ftd. 8 Ruffled Candy Dish with Berry Interior - Pur. (excellent example; super satiny interior)
- _____ 261. **N FRUIT AND FLOWERS HANDLED BON BON WITH BASKETWEAVE EXTERIOR - AQUA OPAL. (RARE AND DESIRABLE; NICE PASTEL FINISH; BURN MARK ON HANDLE)**
- _____ 262. **N FRUIT AND FLOWERS HANDLED BON BON WITH BASKETWEAVE EXTERIOR - DK. ICE BLUE (SUPER EXAMPLE; NICE AND DARK WITH WONDERFUL IRID.)**
- _____ 263. N Fruit and Flowers Handled Bon Bon with Basketweave Exterior - Green (almost wants to be emerald; nice example)
- _____ 264. **N FRUIT AND FLOWERS HANDLED BON BON WITH BASKETWEAVE EXTERIOR - ELEC. BLUE (SUPER IRID. - BRIGHT BLUE HIGHLIGHTS; NICE)**
- _____ 265. N Fruit and Flowers Handled Bon Bon with Basketweave Exterior - Blue (nice, above average example with multi-colored irid.)
- _____ 266. N Fruit and Flowers Handled Bon Bon with Basketweave Exterior - Odd Amy. (almost a violet base color; nice item)
- _____ 267. N Fruit and Flowers Handled Bon Bon with Basketweave Exterior - Amy. (nice irid.)
- _____ 268. N Fruit and Flowers Handled Bon Bon with Basketweave Exterior - Dk. Mari. (super color - one of the better examples)
- _____ 269. N Fruit and Flowers 7 pc. Ruffled Berry Set with Basketweave Exterior - Pur. (very scarce set; master and 4 sauces match, 2 goldish)
- _____ 270. **7 1/4" N FRUIT AND FLOWERS PLATE WITH BASKETWEAVE EXTERIOR - PUR. (VERY SCARCE AND DESIRABLE ITEM; NICE IRID.)**
- _____ 271. 7 1/4" N Fruit and Flowers Plate with Basketweave Exterior - Green (very scarce and desirable; has wear on fruit)
- _____ 272. **9" N THREE FRUITS PLATE WITH PLAIN EXTERIOR - PUR. (ABSOLUTELY FANTASTIC COLOR AND IRID.; SUPER)**
- _____ 273. 9" N Three Fruits Plate with Basketweave Exterior - Green (really nice satiny example - a beauty)
- _____ 274. N Round Bushel Basket - Blue (very scarce; has Elec. Blue highlights)
- _____ 275. **N POINSETTIA AND LATTICE FTD. 8 RUFFLED BOWL WITH RIBBED EXTERIOR - ICE BLUE (RARE AND VERY DESIRABLE; GREAT COLOR AND IRID.)**
- _____ 276. **N SPRINGTIME COVERED BUTTER DISH - PUR. (RARE AND DESIRABLE; NICE COLOR AND IRID.)**
- _____ 277. **N SPRINGTIME HANDLED CREAMER - PUR. (RARE AND DESIRABLE; NICE COLOR AND IRID.)**
- _____ 278. **N SPRINGTIME SPOONER - LT. AMY. (ABSOLUTELY SUPER BASE COLOR AND IRID.)**
- _____ 279. N Springtime 5 pc. Berry Set - Pur. (actually quite a rare set; nice color)
- _____ 280. **N HEART AND FLOWERS STEMMED RUFFLED COMPOTE - AQUA OPAL. (SUPER PASTEL IRID.; GREAT OPAL. AND COLOR)**
- _____ 281. N Heart and Flowers Stemmed Ruffled Compote - White (very scarce; nice and frosty; nice irid.)
- _____ 282. **N HEART AND FLOWERS STEMMED RUFFLED COMPOTE - DK. MARI. (A SUPER EXAMPLE; WONDERFUL DARK COLOR)**
- _____ 283. **N HEART AND FLOWERS 8 RUFFLED BOWL WITH RIBBED EXTERIOR - ICE BLUE (VERY SCARCE AND DESIRABLE; REALLY NICE)**
- _____ 284. **N HEART AND FLOWERS 8 RUFFLED BOWL WITH PLAIN EXTERIOR - ICE BLUE (ANOTHER NICE EXAMPLE; FLARED WITH PLAIN EXTERIOR)**
- _____ 285. **9 1/4" POPPY SHOW PLATE - ELEC. BLUE (ACTUALLY QUITE A BEAUTIFUL EXAMPLE; HAS TINY MANUF. FLAKE ON BASE - MEANS NOTHING!)**
- _____ 286. **9 1/2" N ROSE SHOW PLATE - BLUE / ELEC. BLUE (RARE, DESIRABLE AND PERFECT; ELEC. BLUE HIGHLIGHTS ON EDGE - GOLD / SILVERY IN CENTER)**
- _____ 287. N Drapery Tri-Cornered Candy Dish - Elec. Blue (rare color for this pattern; bright blue interior; chip on one toe)
- _____ 288. 7 1/2" N Beads Exterior 8 Ruffled Bowl - Green (satiny finish)
- _____ 289. 8 1/2" N Greek Key Domed 8 Ruffled Bowl or Compote - Green (satiny finish)
- _____ 290. **9 1/4" N STRAWBERRY STIPPLED PLATE WITH BASKETWEAVE EXTERIOR - GREEN (RARE AND VERY DESIRABLE; A BEAUTY WITH BLUE HIGHLIGHTS)**
- _____ 291. **8 3/4" N STRAWBERRY BOWL WITH PIE CRUST EDGE AND PLAIN EXTERIOR - PUR. (A BEAUTIFUL EXAMPLE WITH BRIGHT MULTI-COLORED IRID.)**

- _____ 292. **7 3/4" N WILD STRAWBERRY HANDGRIP PLATE WITH BASKETWEAVE EXTERIOR - PUR. (ANOTHER REALLY NICE EXAMPLE WITH RED AND BLUE HIGHLIGHTS)**
- _____ 293. N Strawberry Plate with Basketweave Exterior - Pur. (nice color and irid.; nice satiny finish)
- _____ 294. 9 1/4" N Stippled Rays Bowl with Pie Crust Edge and Basketweave Exterior - Mari. (nice color)
- _____ 294A 9 1/2" N Stippled Rays Bowl with Pie Crust Edge and Basketweave Exterior - Pur.
- _____ 295. **N ORIENTAL POPPY 7 PC. TANKARD WATER SET - PUR. (RARE, DESIRABLE AND BEAUTIFUL; BRIGHT IRID.)**
- _____ 296. **N RASPBERRY HANDLED WATER PITCHER - DK. MARI. (PROBABLY ONE OF THE BEST I'VE SEEN - REALLY NICE)**
- _____ 297. N Fine Cut and Roses ftd. Rose Bowl with Fancy Interior - Olive Green (rare to find with interior pattern in this color; chip on one foot)
- _____ 298. N Fine Cut and Roses ftd. Rose Bowl Amy. (nice satiny finish with perfect feet)
- _____ 299. N Fine Cut and Roses ftd. 6 Ruffled Candy Dish - Pur. (nice color and irid.; perfect feet)
- _____ 300. **N ACORN BURR 4 PC. TABLE SET - PUR. (RARE AND DESIRABLE SET; WELL MATCHED AND PERFECT; MAY BE A PIN-HEAD SOMEWHERE; SELLING AS A SET)**
- _____ 301. N Daisy and Plume Stemmed Ruffled Rose Bowl - Dk. Mari. (really nice color and detail)
- _____ 302. 9" N Pansy and Plume Exterior Ruffled Bowl - Mari. (satiny)
- _____ 303. N Lustre Flute 6 Ruffled Hat Shape - Mari.
- _____ 304. 8" N Rosette ftd. 8 Ruffled Deep Bowl - Pur. (satiny finish)
- _____ 305. **N DANDELION 7 PC. TANKARD WATER SET - PUR. (RARE AND DESIRABLE; NICE GOLD / REDDISH HIGHLIGHTS)**
- _____ 306. **8 1/2" N EMBROIDERED MUMS 8 RUFFLED BOWL WITH RIBBED EXTERIOR - PUR. (VERY DESIRABLE PATTERN; NICE AVERAGE IRID.)**
- _____ 307. 8 3/4" N Greek Key 8 Ruffled Bowl with Basketweave Exterior - Pur. (satiny finish with silvery highlights)
- _____ 308. **N BLOSSOMTIME STEMMED 6 RUFFLED COMPOTE - MARI. (RARE AND DESIRABLE PATTERN; NICE SATINY FINISH)**
- _____ 309. N Blossomtime (Exterior) Patterned Stemmed 6 Ruffled Compote - Green (very unusual - does not have an interior pattern, just the exterior)
- _____ 310. **9" N GREEK KEY PLATE WITH BASKETWEAVE EXTERIOR - MARI. (RARE AND VERY DESIRABLE; SUPER SATINY FINISH)**
- _____ 311. **N CHERRY AND CABLE 4 PC. TABLE SET - MARI. (A VERY RARE AND DESIRABLE SET; CREAMER IS A BIT LIGHTER)**
- _____ 312. **9" N WISHBONE FTD. PLATE WITH RUFFLES AND RINGS EXTERIOR - AMY. (RARE AND DESIRABLE; THIS ONE IS A BIT FLATTER THAN MOST)**
- _____ 313. 8 1/2" N Wishbone ftd. 8 Ruffled Bowl with Ruffles and Rings Exterior - Amy. (nice satiny finish with goldish highlights)
- _____ 314. 8 1/2" N Sunflower ftd. 8 Ruffled Bowl with Meander Exterior - Green (really nice satiny example)
- _____ 315. N Butterfly 2 Handled Bon Bon with Plain Exterior - Amy. (nice color and irid.)
- _____ 316. Fenton 2 pc. Plain Tumble Up - Dk. Mari. (nice color)
- _____ 317. Fenton Sailboat Stemmed Wine Glass - Blue (really nice example with great detail)
- _____ 318. (5) Fenton Sailboat Stemmed Wine Glasses - Dk. Mari. (nice color and irid.; selling choice)
- _____ 319. 9 3/4" Fenton Feathered Serpent Large 8 Ruffled Bowl - Blue (very attractive with really nice satiny finish)
- _____ 320. **8 1/4" FENTON TWO FLOWERS SPATULA FTD. 8 RUFFLED BOWL - RED (VERY RARE AND EXTREMELY DESIRABLE; A BEAUTIFUL EXAMPLE AND LOOKS REALLY RED)**
- _____ 321. **FENTON HOLLY 6 RUFFLED HAT SHAPE - RED (SUPER EXAMPLE - LOOKS RED; REALLY NICE)**
- _____ 322. **FENTON 2 ROW OPEN EDGE JACK IN THE PULPIT HAT - RED (RARE; VERY DESIRABLE; NICE SATINY FINISH)**
- _____ 323. **FENTON 2 ROW OPEN EDGE JACK IN THE PULPIT HAT - RED (RARE, DESIRABLE; SAME AS ABOVE, A BIT SMALLER)**
- _____ 324. Fenton 2 Row Open Edge Jack in the Pulpit Hat - Blue (satiny; a bit silvery)
- _____ 325. Fenton 2 Row Open Edge 2 Sided Hat - Blue (nice example)
- _____ 326. Fenton 2 Row Open Edge 2 Sided Hat with Miller's Furniture Advert. - Lt. Mari. (average irid.)
- _____ 327. Fenton 2 Row Open Edge 2 Sided Hat - Mari. (nice satiny finish)
- _____ 328. Fenton 2 Row Open Edge Blackberry 6 Ruffled Hat - Mari. (satiny)
- _____ 329. 9" Fenton Autumn Acorn 6 Ruffled Bowl - Mari. (satiny)
- _____ 330. **FENTON ORANGE TREE FTD. HATPIN HOLDER - WHITE (EXTREMELY RARE AND DESIRABLE; BOTTOM SIDE OF ONE FOOT HAS BEEN DAMAGED AND EPOXIED; ONE OF ONLY A FEW KNOWN)**
- _____ 331. **FENTON ORANGE TREE HANDLED LOVING CUP - WHITE (PERFECT AND VERY DESIRABLE; IRID. ON INSIDE - NICE)**
- _____ 332. **FENTON ORANGE TREE HANDLED LOVING CUP - AMY. (ANOTHER RARE AND DESIRABLE ITEM; NICE GOLDISH, SATINY FINISH)**
- _____ 333. **FENTON ORANGE TREE HANDLED LOVING CUP - GREEN (ANOTHER RARE COLOR; IRID. A BIT SILVERY)**
- _____ 334. **FENTON ORANGE TREE HANDLED LOVING CUP - BLUE (REALLY NICE, SCARCE ITEM; NICE IRID.)**
- _____ 335. Fenton Orange Tree Handled Loving Cup - Mari. (scarce; nice dark irid. on inside; small chip on base)
- _____ 336. **9 - 9 1/2" FENTON ORANGE TREE FLAT PLATE - BLUE (SUPER, SUPER EXAMPLE; HAS LOTS OF RED HIGHLIGHTS)**
- _____ 337. 9" Fenton Orange Tree 6 Ruffled Bowl - Blue (nice bowl with a satiny finish)
- _____ 338. Fenton ftd. Orange Tree Master Berry Bowl - Blue (nice color; has a smoothed spot on one toe)
- _____ 339. Fenton Orange Tree ftd. Large 8 Ruffled Fruit Bowl - Dk. Mari. (super example)
- _____ 340. **9 - 9 1/4" FENTON CONCORD GRAPE PLATE - MARI. (RARE AND VERY DESIRABLE; PERFECT WITH ABOVE AVERAGE IRID.)**

- _____ 341. 8 1/2" Fenton Concord Grape 6 Ruffled Bowl - Dk. Mari. (very scarce with really nice irid.)
- _____ **342. 9 1/2" FENTON PERSIAN MEDALLION FLAT PLATE - DK. MARI. (ABSOLUTELY SUPER EXAMPLE; DARK AND A BEAUT)**
- _____ 343. Fenton Persian Medallion Hair Receiver - Mari. (nice color; scarce)
- _____ 344. Fenton Persian Medallion 2 Sided 2 Handled Card Tray - Mari. (nice color)
- _____ 345. Fenton Persian Medallion Large Stemmed Ruffled Compote with Crimped Edge - Dk. Mari. (scarce color; nice irid.)
- _____ 346. 6" Fenton Persian Medallion Flat Plate - Mari. (satiny; heavier irid. on exterior)
- _____ 347. Fenton Butterfly and Fern Tumbler with Collar Base - Blue (super example; great color and detail)
- _____ 348. Fenton Butterfly and Fern Tumbler with Collar Base - Dk. Mari. (super color with great detail)
- _____ 349. Fenton Butterfly and Fern Tumbler with Manuf. Ground Base - Amy. (nice detail; nice satiny finish)
- _____ **350. FENTON FLUFFY PEACOCK TUMBLER - GREEN (VERY SCARCE AND DESIRABLE; SATINY FINISH)**
- _____ **351. FENTON FTD. ORANGE TREE TUMBLER - WHITE (SUPER EXAMPLE, LOOKS TO BE PERFECT)**
- _____ 352. Fenton ftd. Orange Tree Tumbler - Mari. (scarce; irid. on inside)
- _____ 353. (2) Fenton Butterfly and Berry Tumblers - Blue (selling choice; one has only fair detail)
- _____ 354. Fenton Panelled Dandelion Tumbler - Amy. (has been polished on top; average irid.)
- _____ **355. FENTON LILY OF THE VALLEY TUMBLER - BLUE (VERY RARE PATTERN; IRID. A BIT SILVERY)**
- _____ 356. Fenton Milady Tumbler - Blue (very scarce; nice multi-colored irid.)
- _____ 357. Fenton Blueberry Tumbler - Blue (scarce; has silver irid. on top, gold at bottom)
- _____ 358. Fenton Orange Tree Scroll Tumbler - Blue (scarce; nice irid. - silvery / gold)
- _____ 359. Fenton Orange Tree Orchard Tumbler - Dk. Mari. (super example; nice dark color)
- _____ 360. Fenton Leaf Tiers ftd. Tumbler - Dk. Mari. (very scarce and has nice satiny finish)
- _____ 361. Fenton Fentonia Tumbler - Dk. Mari. (another really nice example - super)
- _____ 362. Fenton 10 Mums Tumbler - Dk. Mari. (scarce; quite nice)
- _____ 363. Fenton Lattice and Grape Tumbler - Blue (scarce; nice bright multi-colored irid.)
- _____ 364. Fenton Bouquet Tumbler - Mari. (satiny finish)
- _____ **365. FENTON BUTTERFLY AND FERN 7 PC. BULBOUS WATER SET - BLUE (RARE AND VERY DESIRABLE; NICE COLOR AND IRID.; TUMBLERS HAVE MANUF. GROUND BASE)**
- _____ 366. Fenton Scale Band Tumbler - Mari.
- _____ 367. Fenton Enamelled Cherries Tumbler with Manuf. Ground Base - Blue
- _____ 368. Fenton Peacock Tail Stemmed 2 Handled Bon Bon - Amy.
- _____ 369. 9" Fenton Heart and Vine 6 Ruffled Bowl - Green (quite a nice example; rich color - nice irid.)
- _____ **370. FENTON IRIS STEMMED 6 RUFFLED COMPOTE - WHITE (EXTREMELY RARE ITEM IN THIS COLOR; NOT MANY AROUND; REALLY NICE IRID.)**
- _____ **371. FENTON IRIS STEMMED 6 RUFFLED COMPOTE - BLUE (VERY RARE IN THIS COLOR; TOUGH TO FIND; A VERY ATTRACTIVE ITEM WITH NICE DETAIL)**
- _____ 372. Fenton Iris Stemmed 6 Ruffled Compote - Amy. (very scarce; nice color)
- _____ 373. Fenton Iris Stemmed 6 Ruffled Compote - Green (very scarce; nice color and irid.)
- _____ 374. Fenton Iris Stemmed 6 Ruffled Compote - Lt. Mari.
- _____ 375. Fenton Iris Stemmed Buttermilk Goblet - Amy. (very scarce; nice color and irid.)
- _____ 376. Fenton Iris Stemmed Buttermilk Goblet - Green (very scarce; nice color and irid.)
- _____ 377. Fenton Iris Stemmed Buttermilk Goblet - Mari. (scarce)
- _____ 378. 7 3/4" Fenton Two Flowers Spatula ftd. Ruffled Bowl - Amy. (very scarce base color for this item)
- _____ 379. 6 1/2" Fenton Acorn Deep Round Bowl - Powder Blue / Mari. (odd base glass color)
- _____ **380. FENTON PANELLED DANDELION 7 PC. TANKARD WATER SET - AMY. (VERY SCARCE AND VERY DESIRABLE SET; NICE COLOR AND IRID.; VERY ATTRACTIVE)**
- _____ **381. FENTON KITTENS CUP AND SAUCER - DK. MARI. (ALWAYS SCARCE AND VERY COLLECTIBLE; HAS NICE DETAIL)**
- _____ 382. Fenton Kittens 4 Ruffled Toothpick Holder - Mari. (scarce and very desirable)
- _____ 383. Fenton Illusion 2 Handled 4 Sided Bon Bon - Blue (very scarce color)
- _____ 384. Fenton Cherry Circles Large 2 Handled 4 Sided Bon Bon - Blue (very attractive item)
- _____ **385. FENTON WINE AND ROSES 7 PC. PEDESTALED CIDER SET - DK. MARI. (VERY RARE SET TO FIND COMPLETE; NICE DARK COLOR)**
- _____ 386. Fenton Cherry Circles Large 2 Handled Round Bon Bon - Blue (nice color)
- _____ 387. Fenton Stippled Rays 2 Handled Card Tray - Amy.
- _____ 388. Fenton Stippled Rays 2 Handled 4 Sided Bon Bon - Amy.
- _____ 389. Fenton Lotus and Grape 2 Handled 4 Sided Bon Bon - Mari.
- _____ 390. Fenton Two Fruits 2 Handled Round Divided Bon Bon - Blue (very scarce item; nice irid.)
- _____ 391. (2) Fenton Butterflies 2 Handled Card Trays - Green (really nice examples; selling choice)
- _____ 392. Fenton Butterflies 2 Handled 4 Sided Bon Bon - Amy.
- _____ 393. 8" Fenton G & C Spatula ftd. 8 Ruffled Bowl - Blue / Mari. Overlay (very odd base color for this pattern)
- _____ 394. 9 3/4" Fenton Little Flowers Large Bowl with 3 in 1 Edge - Amy. (light goldish irid.; very desirable shape)
- _____ **395. FENTON CAPTIVE ROSE STEMMED 6 RUFFLED COMPOTE - WHITE (VERY SCARCE; NICE FROSTY IRID.)**
- _____ 396. Fenton Birds and Cherries Stemmed 6 Ruffled Compote - Blue (scarce; nice color)
- _____ 397. Fenton Rose Wreath Stemmed 6 Ruffled Compote - Amy.
- _____ 398. Fenton Sailboats Large 6 Ruffled Compote - Mari.
- _____ 399. Fenton Vintage Grape Stemmed 6 Ruffled Compote - Mari.
- _____ 400. Fenton Stream of Hearts Stemmed 6 Ruffled Compote - Mari. (scarce; nice color)
- _____ 401. Fenton Peacock at the Urn Stemmed Flared Compote - Blue (odd shape)

- _____ 402. Fenton Peacock at the Urn Stemmed Ruffled Compote - Lt. Mari.
- _____ 403. 5 3/4" Fenton Stippled Rays Round Sauce - Mari.
- _____ 404. 8 1/2" Fenton Vintage Grape Bowl with 3 in 1 Edge - Mari.
- _____ 405. 7 1/2" Tall Fenton Three Diamonds and Bows Swung Vase - Green (very scarce color; may have small chip on base)
- _____ 406. 8" Fenton Leaf Chain Ice Cream Shaped Bowl - Dk. Mari. (buffed on one point)
- _____ 407. 8 1/2" Fenton Dragon and Lotus 8 Ruffled Bowl - Dk. Mari.
- _____ 408. 8 1/2" Fenton Dragon and Lotus Ice Cream Shaped Bowl - Mari. (irid. on exterior; chipped point)
- _____ 409. Fenton Flowering Dill Jack in the Pulpit Crimped Edge Hat Shape - Mari.
- _____ **410. 9 1/4" FENTON CAPTIVE ROSE FLAT PLATE - DK. MARI. (SUPER EXAMPLE FOR THIS ITEM, IN THIS COLOR; HAS TO BE ONE OF THE MOST DESIRABLE PLATES)**
- _____ 411. 9 1/2" FENTON HOLLY FLAT PLATE - DK. MARI. (REALLY NICE EXAMPLE)
- _____ 412. 7 3/4" FENTON HORSEHEAD MEDALLION FLAT PLATE - MARI. (VERY SCARCE WITH REALLY NICE DETAIL)
- _____ 413. Fenton Horsehead Medallion ftd. Rose Bowl - Mari. (very scarce; nice color and detail)
- _____ 414. Fenton Horsehead Medallion ftd. Jack in the Pulpit Bowl - Dk. Mari. (really nice color and shape)
- _____ 415. **9" FENTON PEACOCK AT THE URN PLATE - BLUE (ALWAYS IN DEMAND; NICE COLOR AND IRID.)**
- _____ 416. 8" Fenton Peacock at the Urn Ice Cream Shaped Bowl - Blue (nice color and irid.)
- _____ 417. Fenton Apple Tree 8 pc. Bulbous Water Set - Dk. Mari. (nice dark color - esp. the pitcher)
- _____ 418. 6 3/4" Fenton Lions Ice Cream Shaped Bowl - Dk. Mari. (nice color and shape for this item)
- _____ 419. Fenton Blackberry Spray 6 Ruffled Hat Shape - Blue
- _____ 420. **9 1/2" FENTON HOLLY FLAT PLATE - AMY. (VERY RARE COLOR FOR THIS ITEM; NICE MULTI-COLORED IRID.)**
- _____ 421. **9" FENTON RIBBON TIE LOW 3 IN 1 EDGE PLATE - BLUE (A BEAUT)**
- _____ 422. 9" Fenton Ribbon Tie Low 3 in 1 Edge Plate - Blue (satiny)
- _____ 423. 9" Fenton Ribbon Tie 6 Ruffled Bowl - Amy.
- _____ 424. Fenton Fern Panels Ruffled Crimped Edge Hat Shape - Blue
- _____ 425. **8 1/2" FENTON RAGGED ROBIN LOW 6 RUFFLED BOWL - BLUE (SUPER EXAMPLE; GREAT DETAIL FOR THIS SCARCE ITEM)**
- _____ 426. 10 1/2" Fenton Stag and Holly Large Ball ftd. Ice Cream Shaped Bowl - Blue (satiny)
- _____ 427. **8" FENTON STAG AND HOLLY SPATULA FTD. ICE CREAM SHAPED BOWL - AMY. (SATINY)**
- _____ 428. 10 1/2" Fenton Chrysanthemum Large Ball ftd. Ice Cream Shaped Bowl - Blue (nice)
- _____ 429. 8 3/4" Fenton Holly Ice Cream Shaped Bowl - Blue (nice irid.)
- _____ 430. **9 1/2" FENTON 10 MUMS BOWL WITH 3 IN 1 EDGE - BLUE (VERY SCARCE; REALLY NICE COLOR AND IRID.)**
- _____ 431. 8 1/4" Fenton Autumn Acorn Bowl with 3 in 1 Edge - Blue
- _____ 432. 8 3/4" Fenton Holly Bowl with 3 in 1 Edge - Blue
- _____ 433. 9" Fenton Peacock and Grape 8 Ruffled Bowl - Blue (nice color and irid.)
- _____ 434. 9" Fenton Peacock and Grape 8 Ruffled Bowl - Mari. (satiny)
- _____ **435. 7 3/4" FENTON THISTLE BOWL WITH TIGHT CANDY RIBBON EDGE - ROOT BEER (EXTREMELY UNUSUAL BASE COLOR FOR THIS ITEM; HAVE YET TO REMEMBER SEEING ANOTHER)**
- _____ 436. 8 1/2" Fenton Coin Dot Bowl with Tight Crimped Edge - Green
- _____ 437. 8 3/4" Fenton Peacock Tail 6 Ruffled Bowl - Green (cracked)
- _____ 438. Fenton Miniature Blackberry Compote - Blue (nice)
- _____ 439. Fenton Holly Stemmed 6 Ruffled Compote - Mari.
- _____ **440. FENTON BUTTERFLY AND BERRY LARGE FTD. 8 RUFFLED MASTER BERRY BOWL - BLUE (A BEAUT)**
- _____ 441. 6" Fenton Pine Cone Plate with Panel Exterior - Green (spotty in center)
- _____ 442. 5 3/4" Fenton Pine Cone 6 Ruffled Sauce - Blue
- _____ 443. 6 1/2" Fenton Cherry Chain Flat Plate with Orange Tree Exterior - Dk. Mari. (satiny)
- _____ 444. 7" Fenton Vintage Grape 6 Ruffled Bowl - Green
- _____ **445. 7 1/4" FENTON FEATHER STITCH DEEP ROUND BOWL - BLUE (VERY SCARCE COLOR FOR THIS PATTERN; NICE IRID.)**
- _____ 446. 11 3/4" Tall Fenton Rustic Swung Vase - Blue (nice)
- _____ 447. Fenton Orange Tree Flared Shaving Mug - Blue
- _____ 448. Fenton Orange Tree Flared Shaving Mug - Blue (silvery)
- _____ 449. Fenton Orange Tree Flared Standard Mug - Blue
- _____ 450. Fenton Orange Tree Flared Standard Mug - Mari.
- _____ 451. Fenton Strawberry 2 Handled 4 Sided Bon Bon - Mari.
- _____ 452. 7" Fenton Leaf Chain 6 Ruffled Bowl - Mari.
- _____ 453. 6" Fenton Sailboats Low 6 Ruffled Bowl - Mari.
- _____ 454. Imperial Panelled Handled Mug - Clam.
- _____ 455. Dugan Vintage Covered Powder Jar - Dk. Mari.
- _____ 456. (2) Westmoreland Pastel Hat Toothpick Holders - Mari. (selling choice)
- _____ 457. Imperial Double Dutch ftd. Ruffled Flared Bowl with Optic Exterior - Mari. (nice irid.)
- _____ 458. Dugan Long Thumbprint Breakfast Sugar and Creamer - Mari.
- _____ 459. 1983 HOACGA Handled Loving Cup - Mari. / Custard
- _____ 460. 1987 HOACGA Ruffled Bowl with John Fenton - Azure Blue
- _____ 461. 1982 ICGA Frolicking Bears Ruffled Spittoon - Red
- _____ 462. 1982 ACGA Seacoast Spittoon - P. Opal.
- _____ 463. 1986 ACGA Morning Glory Pitcher - Cased Blue / White
- _____ 464. 1986 ACGA Morning Glory Pitcher - Mari.
- _____ 465. 1997 ACGA Frolicking Bears Vase or Tumbler - Plume Opal.

ADDITIONAL ITEMS POSSIBLE

NOTES

