

BURNS

AUCTION SERVICE

Tampa Bay Carnival Glass Club's "Lose Your Heart to Carnival Glass" Jamboree Auction

Friday, February 13, 1998

*1st Session - Preview: 12 Noon,
Auction 1:30 pm (Lots 1 - 200)*

*2nd Session - Preview: Prior to Auction,
beginning one hour after conclusion
of 1st Session (Lots 201 - end)*

at the **Best Western - Mirage**

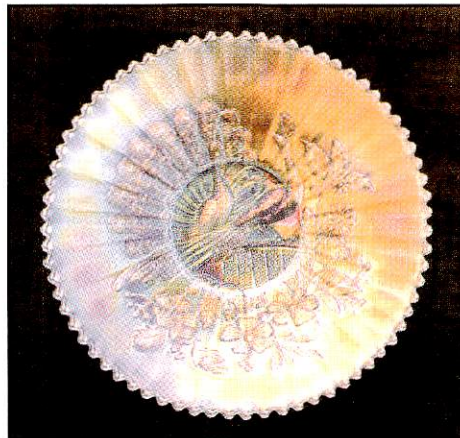
5005 34th Street North (US 19)

St. Petersburg, FL 33714

(813) 525-1181

for reservations only: (800) 843-4669

Bill Richards, Auctioneer - FL Lic. #AU-0001621



Happy New Year! Hope everyone is doing fine. We are starting 1998 with a bang! This year we, once again, will present the auction for the Tampa Bay Jamboree. Glass from all over the East as well as Canada will be offered to the highest bidder and I will have to say that this year's selection ranks as one of the better ones. There is something for everyone with very little damage. Hope to see ya there - it's better than being in the snow!

The Best Western - Mirage will once again host the event. You can make your reservations by calling the motel direct at 813-525-1181 (or 1-800-843-4669 for reservations only). It's not too hard to find at all - just take the 54th Street exit off I-275 west to US 19, then turn left (south).

Mail, Phone, Fax or E-mail your bids by Wednesday, February 11th, 1998... but please note - if you want to talk to Tom he will be in transit the first part of that week and from the middle part on, will be at the Mirage.

We plan on keeping busy this year - keep your eye out for another brochure very shortly for the Markley Auction in Springfield, Ohio the end of February. So keep in touch - if we can be of assistance or give you any information call or write.

Burns Auction Service
Bill Richards III, Auctioneer • Florida License No. AU-0001621

Tom Burns, Manager
P.O. Box 608
Bath, New York 14810
(607) 776-7942

Bill Richards
44 Water St., Poland, OH 44514
(330) 757-2001
FAX (330) 757-4917

Bill Richards, III, Auctioneer
2253 Country Lane
Poland, OH 44514
(330) 755-2620

Maid Bids honored under the following conditions:

1. No deposit required. Bidders will take full responsibility to honor any and all bids we execute for them. Payment in full plus postage and handling required after notification and before we ship any item to them.
2. Items are bid on in perfect condition with average or above average iridescence OR as listed in the brochures. Bids will not be carried out when damage on an item has been found during the auction. **PEOPLE PRESENT AT AUCTION ARE RESPONSIBLE FOR FINDING ANY PINHEADS, WEAR, SPOTTINESS, MANUFACTURER'S DEFECTS OR ANY OTHER MINOR FLAWS, ETC.**
3. Successful bidders will be notified by collect call from the auctioneer (**so be sure to include phone number**).
4. Phone inquiries about the glass or any other questions are welcome.
5. If you have some other person at the auction bidding for you, they must pay for the item before taking it.
6. Mail, Email, FAX and Phone bids due by Wednesday, Feb. 11, 1998.

- | | |
|---|---|
| <p>____ 1. Imperial Stretch Chip and Dip Set - Honey Amber (great color and irid.; attractive)</p> <p>____ 2. U.S. Glass (?) Stretch Stemmed Flared Compote - Celeste Blue (odd tint - attractive)</p> <p>____ 3. U.S. Glass (or Vineland) Stretch Tri-Cornered Cylinder Vase - Lt. Amber (odd shape, odd color - unusual)</p> <p>____ 4. 11 1/4" U.S. Glass (or Fenton) Stretch Tall Flared ftd. Vase - Vaseline (a rather large example; great color)</p> <p>____ 5. N ROUND HANDLED BUSHEL BASKET - AQUA OPAL. (RARE AND DESIRABLE; ODD TINT - PERFECT)</p> <p>____ 6. N ROUND HANDLED BUSHEL BASKET - ICE GREEN (VERY SCARCE; NICE COLOR AND IRID.)</p> <p>____ 7. N ROUND HANDLED BUSHEL BASKET - HOREHOUND (RARE AND DESIRABLE; LOOKS SORTA AMBER; REALLY NICE ITEM)</p> | <p>____ 8. N ROUND HANDLED BUSHEL BASKET - PUR. (SUPER COLOR AND IRID.; A BEAUTY)</p> <p>____ 9. N Peacocks Ruffled Bowl with Ribbed Exterior - Blue Opal. (not Carnival; nice base color and opal.)</p> <p>____ 10. 6" IMPERIAL MORNING GLORY AND DRAPE MINIATURE SWUNG VASE - PUR. (RARE AND VERY DESIRABLE; HAVEN'T SOLD ONE OF THESE IN A WHILE; SUPER COLOR AND IRID.)</p> <p>____ 11. Imperial Soda Gold 7 pc. Water Set - Dk. Mari. (very scarce set; nice dark color)</p> <p>____ 12. (3) Imperial Grape Ind. Ruffled Berry Bowls - Amber (selling choice; sorta scarce color)</p> <p>____ 13. Imperial Lustre Rose Handled Water Pitcher - Teal (not iridized but a really scarce item)</p> <p>____ 14. IMPERIAL COLONIAL FLUTE HANDLED TOOTHPICK HOLDER, SIGNED WITH IRON CROSS - MARI. (VERY RARE AND VERY DESIRABLE; NICE COLOR)</p> |
|---|---|

- _____ 15. **M'BURG HANGING CHERRIES TUMBLER WITH MANUF. GROUND BASE - AMY. (RARE AND DESIRABLE; SUPER SATINY FINISH - REALLY NICE)**
- _____ 16. **FENTON STRAWBERRY SCROLL TUMBLER - BLUE (RARE AND DESIRABLE; IRID. A BIT GOLDISH)**
- _____ 17. **9" FENTON HOLLY FLAT PLATE - BLUE (SCARCE; DESIRABLE; HAS FLAKE UNDER BASE)**
- _____ 18. **22 1/2" FENTON RUSTIC SWUNG FUNERAL VASE WITH PLUNGER BASE - AMY. (VERY RARE AND VERY DESIRABLE; REALLY NICE BRIGHT MULTI-COLORED IRID.; HAS THE ODD BASE)**
- _____ 19. Fenton Stretch "Littlest Punch Bowl" or Mayonnaise with Floral Decoration - Velva Rose (cute stretch piece - some of decor. worn)
- _____ 20. **(2) EUROPEAN MARY GREGORY STEMMED CORDIALS: (1) ENAMELLED LITTLE BOY, (2) ENAMELLED LITTLE GIRL - LT. MARI. (RARE AND VERY DESIRABLE; SELLING SO MUCH EACH FOR PAIR)**
- _____ 21. European Grand Thistle ftd. Tumbler - Blue (very scarce item; may have small chip)
- _____ 22. Dugan Daisy and Lattice 7 pc. Tankard Water Set - Dk. Mari. (nice set; pitcher is probably as dark as I've seen)
- _____ 23. **7 1/2" DUGAN FISHSCALE AND BEADS FLAT PLATE - WHITE (VERY SCARCE ITEM; GREAT IRID.; VERY DESIRABLE)**
- _____ 24. 7 1/2" Dugan Persian Garden / Pool of Pearls Flat Plate - White (scarce; average irid.; small chip on base)
- _____ 25. **9" N HEART AND FLOWERS FLAT PLATE - MARI. (OUTSTANDING EXAMPLE - A BEAUT; SORTA ON THE PASTEL SIDE)**
- _____ 26. **N HEART AND FLOWERS STEMMED 6 RUFFLED COMPOTE WITH PLAIN EXTERIOR - WHITE (VERY SCARCE; NICE AND FROSTY WITH PASTEL IRID.)**
- _____ 27. N Heart and Flowers Stemmed 6 Ruffled Compote with Ribbed Exterior - Mari. (scarce; nice irid.; iridized on interior)
- _____ 28. **N WISHBONE BASE ONLY FOR EPERGNE WITH BASKETWEAVE EXTERIOR - GREEN (BEAUTIFUL SATINY FINISH; WHO HAS THE LILY?)**
- _____ 29. 8" N Wishbone Deep 8 Ruffled ftd. Bowl with Ruffles and Rings Exterior - Mari. (nice detail and satiny finish)
- _____ 30. **8 3/4" N NIPPON BOWL WITH PIE CRUST EDGE AND RIBBED EXTERIOR - ICE BLUE (PERFECT; REALLY NICE MULTI-COLORED IRID.)**
- _____ 31. 8 1/2" N Nippon 8 Ruffled Bowl with Basketweave Exterior - Pur. (a beautiful satiny example; really nice)
- _____ 32. 5 3/4" Tall x 4 3/4" Across N Diamond Point Squatty Flared Vase - Dk. Mari. (a cutie with great color and irid.)
- _____ 33. 7 1/2" Tall x 5" Across N Diamond Point Swung Vase - Green (super rich irid. - very attractive)
- _____ 34. 9 1/2" Tall N Diamond Point Swung Vase - Pur. (nice example; satiny finish)
- _____ 35. **N PEACOCK AT THE FOUNTAIN HANDLED WATER PITCHER - BLUE / ELEC. BLUE (SUPER PITCHER WITH GREAT HIGHLIGHTS)**
- _____ 36. **N PEACOCK AT THE FOUNTAIN TUMBLER - ELEC. BLUE (SUPER, SUPER EXAMPLE; BRIGHT HIGHLIGHTS)**
- _____ 37. (3) N Peacock at the Fountain Tumblers - Blue / Elec. Blue (really nice examples; matches pitcher above; selling choice)
- _____ 38. N Peacock at the Fountain Tumbler - Blue (scarce; irid. a bit goldish / silvery)
- _____ 39. **N PEACOCK AT THE FOUNTAIN FTD. RUFFLED FRUIT BOWL - BLUE (VERY SCARCE AND DESIRABLE; HAS SUPER REDDISH IRID.; MIRROR FINISH INSIDE)**
- _____ 40. **N PEACOCK AT THE FOUNTAIN MASTER BERRY BOWL - ICE BLUE (RARE, DESIRABLE WITH GREAT IRID. - NICE)**
- _____ 41. N Peacock at the Fountain Master Berry Bowl - Dk. Mari. (super, super dark color and irid.)
- _____ 42. N Peacock at the Fountain Handled Water Pitcher - Mari. (scarce; nice example with multi-colored irid.)
- _____ 43. (4) N Peacock at the Fountain Tumblers - Dk. Mari. (super dark color and irid.; selling choice)
- _____ 44. N Singing Birds Ind. Berry Bowl - Emerald Green (super color with bright blue irid.)
- _____ 45. **N PEACOCKS PLATE WITH RIBBED EXTERIOR - ICE BLUE (RARE AND VERY DESIRABLE; SUPER IRID.; A REALLY ATTRACTIVE EXAMPLE)**
- _____ 46. **8 3/4" N PEACOCKS BOWL WITH PIE CRUST EDGE AND RIBBED EXTERIOR - DK. MARI. (SUPER EXAMPLE WITH RED AND BLUE HIGHLIGHTS)**
- _____ 47. 9 3/4" Tall N Thin Rib Swung Vase - Green (really nice irid.)
- _____ 48. 9" Tall N Thin Rib Swung Vase - Amy. (nice color and irid.)
- _____ 49. 7 3/4" Tall N Fine Rib Swung Vase - Mari. (average irid.)
- _____ 50. **N BEADED CABLE FTD. RUFFLED ROSE BOWL - WHITE (RARE AND DESIRABLE; NICE FROSTY COLOR AND IRID.)**
- _____ 50A **N POPPY RUFFLED RELISH TRAY - AQUA OPAL. (RARE AND VERY DESIRABLE; MAY HAVE SLIGHT ROUGHNESS ON BASE)**
- _____ 51. N Fine Cut and Roses ftd. Rose Bowl - Amy. (nice example with perfect feet)
- _____ 52. N Fine Cut and Roses ftd. Ruffled Candy Dish with Fancy Interior - White (very scarce with super irid. - nice)

- _____ 53. **N ROUND HANDLED BUSHEL BASKET - WHITE (EXCELLENT EXAMPLE; NICE AND FROSTY WITH GREAT IRID.)**
- _____ 54. N Round Handled Bushel Basket - Dk. Mari. (super example; great dark color and irid.; nice!)
- _____ 55. **8" N DRAPERY SWUNG VASE - ICE GREEN (SUPER AND PERFECT; GREAT CONDITION - NICE)**
- _____ 56. 7 1/2" N Drapery Swung Vase - Dk. Mari. (nice color and irid. - perfect)
- _____ 57. N Drapery Tri-Cornered Candy Dish - Dk. Mari. (pretty scarce in this color; nice and dark)
- _____ 58. 8 1/2" N Drapery Variant Swung Vase - Dk. Mari. (very scarce and desirable; gets just a tad lighter near base)
- _____ 59. (2) N Graceful Vases - Green (pretty nice examples - selling choice)
- _____ 60. **N FRUIT AND FLOWERS STEMMED HANDLED BON BON - BLUE / ELEC. BLUE (VERY SCARCE; HAS REALLY BRIGHT IRID.)**
- _____ 61. **7 1/2" N FRUIT AND FLOWERS PLATE WITH BASKETWEAVE EXTERIOR - MARI. (VERY SCARCE; NICE COLOR AND IRID.; HAS THE SLIGHTEST WEAR)**
- _____ 62. 7 1/2" N Fruit and Flowers 6 Ruffled Bowl with Plain Exterior - Amy. (really nice example; attractive)
- _____ 63. 7 1/2" N Three Fruits 8 Ruffled Bowl with Plain Exterior - Amy. (really nice example; nice multi-colored irid.)
- _____ 64. 8 3/4" N Three Fruits 8 Ruffled Bowl with Basketweave Exterior - Pur. (irid. is silvery)
- _____ 65. **N G & C FTD. HATPIN HOLDER - PUR. (SUPER EXAMPLE - GREAT MULTI-COLORED IRID.)**
- _____ 66. 8 3/4" N G & C Variant Bowl with Pie Crust Edge and Basketweave Exterior - Green (absolutely fantastic irid. - a beautiful example)
- _____ 67. 8 1/2" N G & C Bowl with Pie Crust Edge and Basketweave Exterior - Mari. (satiny irid.)
- _____ 68. 6" N G & C Handgrip Plate with Basketweave Exterior - Dk. Mari. (a cutie; nice color and very attractive)
- _____ 69. 9" N G & C Plate with Basketweave Exterior - Pur. (nice color with nice goldish irid.)
- _____ 70. **10" N G & C LARGE ICE CREAM BOWL WITH BASKETWEAVE EXTERIOR - MARI. (ALMOST WANT TO CALL THIS ONE PASTEL; SUPER IRID. - VERY ATTRACTIVE)**
- _____ 71. 5 1/2" N G & C Ind. Ice Cream Bowl with Basketweave Exterior - White (very scarce item; nice irid. - a bit silvery)
- _____ 72. N G & C Tumbler - Green (nice example)
- _____ 73. N G & C Tumbler - Amy. (nice example)
- _____ 74. 11 1/4" N G & C Large 8 Ruffled Bowl with Basketweave Exterior - Mari. (nice large item with pink and blue highlights)
- _____ 75. 11" N G & C Large 8 Ruffled Bowl with Basketweave Exterior - Mari. (just like above - nice irid.)
- _____ 76. N Wide Panel Side Lily for Epergne - Dk. Mari. (tough part if ya need it; nice color)
- _____ 77. N Wide Panel (Flute) Tumbler - Mari. (nice color; satiny)
- _____ 78. 3 1/4" Tall N Wide Panel Stemmed 6 Ruffled Sherbet - Green (nice irid. for a plain pattern)
- _____ 79. 7" Tall N Tree Trunk Flared Squatty Vase - Green (satiny)
- _____ 80. **N ACORN BURR HANDLED SPOONER - GREEN (REALLY SCARCE IF YA NEED IT - PERFECT)**
- _____ 81. **9" N GOOD LUCK 8 RUFFLED BOWL WITH BASKETWEAVE EXTERIOR - AMY. (VERY SCARCE; NICE SATINY, MULTI-COLORED IRID.)**
- _____ 82. 8 3/4" N Strawberry 8 Ruffled Bowl with Plain Exterior - Amy. (very attractive item; smoothed spot on one point)
- _____ 83. 7 1/2" N Smooth Ribbed Interior (Floral) with Pansy Based Pattern - Pur. (nice color and irid.)
- _____ 84. (2) N Smooth Ribbed Interior Stemmed Compotes or Parfaits - Green and Mari. (selling choice)
- _____ 85. **9 1/2" M'BURG PEACOCK DEEP FLARED MASTER BERRY BOWL - AMY. (SUPER RADIUM; NO BEE - NO BEADING; REALLY SUPER EXAMPLE)**
- _____ 86. **(5) 5 1/2" M'BURG PEACOCKS IND. FLARED BERRY BOWLS - AMY. (NO BEES - NO BEADING; SUPER RADIUM EXAMPLES; SELLING CHOICE)**
- _____ 87. **(4) 5 1/2" M'BURG PEACOCKS IND. FLARED BERRY BOWLS - MARI. (NO BEES - NO BEADING; RADIUM AND VERY RARE; SELLING CHOICE)**
- _____ 88. M'burg Peacock Tail Variant Stemmed 6 Ruffled Compote - Green (very scarce and desirable; great radium finish)
- _____ 89. M'burg Holly Sprig Tri-Cornered Handled Nappy - Amy. (super radium finish - a wonderful example)
- _____ 90. **10" M'BURG FLEUR DE LEI LARGE 6 RUFFLED BOWL - GREEN (RARE AND VERY DESIRABLE; SUPER RADIUM FINISH)**
- _____ 91. **10 1/4" M'BURG FLEUR DE LEI LARGE 6 RUFFLED BOWL - AMY. (ANOTHER VERY DESIRABLE ITEM WITH SUPER RADIUM FINISH)**
- _____ 92. 9" M'burg Fleur de Lei Tri-Cornered Crimped Edge Domed ftd. Bowl - Mari. (rare, desirable item with super radium finish; polished chip on one point)
- _____ 93. 10 1/4" M'burg Blackberry Wreath Large 6 Ruffled Bowl - Mari. (really nice satiny finish - attractive)
- _____ 94. 6" M'burg Blackberry Wreath Ind. 6 Ruffled Bowl - Amy. (really nice satiny finish)
- _____ 95. 6" M'burg Blackberry Wreath Ind. Berry Bowl with Tight Crimped Edge - Pastel Mari. (super radium finish; great shape and irid.)
- _____ 96. 6" M'burg Blackberry Wreath 6 Ruffled Sauce - Green (really nice radium finish - super!)
- _____ 97. 7" M'burg Strawberry Wreath Variant Bowl with 3 in 1 Edge - Amy. (super radium example; nice irid.)

- _____ 98. Sowerby Prisms ftd. Vase - Dk. Mari. (scarce; great color)
- _____ 99. **CAMBRIDGE INVERTED STRAWBERRY COVERED BUTTER DISH - DK. MARI. (VERY RARE AND VERY DESIRABLE; GREAT TOP, BASE HAS ROUGHNESS ALONG EDGE BUT FIND ANOTHER ONE...)**
- _____ 100. **CAMBRIDGE INVERTED STRAWBERRY HANDLED CREAMER - DK. MARI. (RARE AND DESIRABLE; NICE COLOR AND IRID.; PERFECT)**
- _____ 101. Cambridge Inverted Strawberry Handled Spooner - Dk. Mari. (another very scarce item; has some roughness on inside of rim)
- _____ 102. Cambridge Inverted Strawberry Sugar Base Only - Mari. (scarce item; perfect but needs the lid)
- _____ 103. 9" Fostoria Brocaided Palms Handled Plate - Ice Green (nice irid. - nice gold trim)
- _____ 104. 7" Fostoria Brocaided Acorns 2 Sided Handled Nappy - Ice Blue (nice irid. - nice gold trim)
- _____ 105. **11" TALL CZECH LARGE ROUND SEAGULL VASE - MARI. (EXTREMELY RARE ITEM; NICE COLOR AND IRID.; IT'S BEEN A WHILE SINCE ONE'S BEEN SOLD)**
- _____ 106. (3) Czech Castle Scene Hand Painted Lamp Shades - Mari. (very scarce; selling choice)
- _____ 107. N Stretch Wide Panelled Covered Candy Jar - Black Amy. (very rare color - can't even see through it)
- _____ 108. Dugan Cherry Wreath Tumbler - White / Decorated (very scarce - frosty; nice decor.; pinhead on base)
- _____ 109. Dugan Vintage Grape Covered Powder Jar - Mari. (nice color and irid.)
- _____ 110. **10" DUGAN GARDEN PATH VARIANT ICE CREAM SHAPED BOWL - P. OPAL. (RARE AND DESIRABLE; GREAT IRID. AND OPAL.)**
- _____ 111. **9" DUGAN WISHBONE AND SPADES ICE CREAM SHAPED BOWL - P. OPAL. (VERY SCARCE AND DESIRABLE; GREAT OPAL. AND IRID.)**
- _____ 112. 9" Dugan Flowers and Frames Domed Low 10 Ruffled Bowl - P. Opal. (excellent example; great opal. and irid.)
- _____ 113. 9" Dugan Stippled Petals Domed Flared Bowl / Plate with Crimped Edge - P. Opal. (scarce; great color and opal.)
- _____ 114. Dugan Leaf Ray Handled Nappy - P. Opal. (nice example with attractive stretch effect)
- _____ 115. 11 3/4" Long Dugan Butterfly and Tulip Large ftd. 2 Sided Bowl with Inverted Fan and Feather Exterior - Mari. (rare item; nice color and irid. with a neat shape)
- _____ 116. (4) Dugan Dahlia ftd. Ind. Round Berry Bowls - Dk. Mari. (scarce items; super color and irid.; selling choice)
- _____ 117. Dugan Mary Ann Handled Vase - Mari. (scarce; desirable)
- _____ 118. 10" Tall Dugan Big Basketweave Swung Vase - Dk. Mari. (nice color for this item)
- _____ 119. 9" Tall Dugan 12 Panelled Bud Vase - Mari.
- _____ 120. **8 3/4" DUGAN BROOKLYN BRIDGE 6 RUFFLED BOWL - DK. MARI. (RARE AND VERY DESIRABLE; FANTASTIC COLOR AND DETAIL)**
- _____ 121. **8 3/4" DUGAN APPLE BLOSSOM TWIG LOW 10 RUFFLED BOWL WITH PLAIN EXTERIOR - PUR. (WHAT A BEAUT! HAS BRIGHT MULTI-COLORED IRID.)**
- _____ 122. 9" Dugan Apple Blossom Twig Low 10 Ruffled Bowl with Plain Exterior - P. Opal. (another nice example with attractive opal.)
- _____ 123. 9 1/4" Dugan Apple Blossom Twig Low 10 Ruffled Bowl with Basketweave Exterior - P. Opal. (very scarce and desirable; nice irid. and opal.)
- _____ 124. (2) 8 1/3" Dugan Pony 6 Ruffled Bowl - Mari. (nice color; selling choice)
- _____ 125. **(2) 5 1/2 - 6" DUGAN TARGET SQUATTY FLARED VASES - P. OPAL. (VERY SCARCE WITH GREAT SHAPE AND OPAL.; SELLING CHOICE)**
- _____ 126. 7 3/4" Dugan Windmill Ice Cream Shaped Bowl - Mari. (satiny)
- _____ 127. 6 1/4" Dugan Persian Garden Flat Plate - Mari. (scarce; average irid.)
- _____ 128. Dugan Beaded Shell ftd. Spooner - Dk. Mari. (really nice color with satiny finish)
- _____ 129. Dugan Wreath of Roses Tri-Cornered Novelty - Dk. Mari. (nice color and irid.)
- _____ 130. Dugan Windflower Handled Tri-cornered Sauce or Nappy - Amy. (this has to be the very best example - beautiful!)
- _____ 131. Dugan Big Basketweave Base to Persian Garden Fruit Bowl - Dk. Pur. (very scarce if ya need it; satiny finish)
- _____ 132. Pair 9 - 9 1/2" Tall Dugan 20 Panelled Swung Vases - Dk. P. Opal. (available items but these are choice - the darkest and has the best opal.)
- _____ 133. 7 1/2" Tall Dugan 20 Panelled Swung Vases - Pur. (scarce; has super irid. in spots - nice)
- _____ 134. 7 3/4" Tall Dugan Twig Bud Vase - Amy. (scarce; has light lid)
- _____ 135. **10" FENTON DRAGON AND STRAWBERRY LARGE FTD. 8 RUFFLED BOWL - GREEN (VERY SCARCE AND DESIRABLE; GREAT COLOR AND IRID.)**
- _____ 136. **FENTON G & C FTD. RUFFLED FRUIT BOWL WITH PERSIAN MEDALLION INTERIOR - GREEN (SUPER EXAMPLE WITH WONDERFUL COLOR AND IRID.)**
- _____ 137. **FENTON G & C FTD. RUFFLED FRUIT BOWL WITH PERSIAN MEDALLION INTERIOR - AMY. (ANOTHER SUPER EXAMPLE WITH WONDERFUL COLOR AND IRID.)**
- _____ 138. Fenton G & C ftd. Ruffled Fruit Bowl with Persian Medallion Interior - Dk. Mari. (nice dark example; small flake on edge)
- _____ 139. **8 3/4" FENTON BUTTERFLY AND BERRY MASTER FTD. BERRY BOWL WITH PLAIN INTERIOR - GREEN (RARE AND VERY DESIRABLE; FANTASTIC COLOR AND IRID.)**

- _____ 140. **9 1/2" FENTON HOLLY FLAT PLATE - GREEN (RARE AND DESIRABLE; HAS SALT STAIN ON LID)**
- _____ 141. **9 1/2" FENTON HOLLY FLAT PLATE - BLUE (VERY SCARCE AND DESIRABLE; NICE SATINY FINISH)**
- _____ 142. 9 1/2" Fenton Holly Flat Plate - White (scarce and desirable; goldish with pink and blue highlights)
- _____ 143. 9 1/2" Fenton Holly Flat Plate - Pastel Mari. (super irid. - some would call it Clambroth)
- _____ 144. 9 1/2" Fenton Holly 6 Ruffled Bowl - White (scarce; frosty with really nice irid.)
- _____ 145. 9" Fenton Holly 10 Ruffled Bowl - Dk. Mari. (fantastic example - super)
- _____ 146. 8 3/4" Fenton Dragon and Lotus 8 Ruffled Bowl - Blue (nice rich irid.)
- _____ 147. 9" Fenton Dragon and Lotus 8 Ruffled Bowl - Blue (satiny example; nice)
- _____ 148. 8 3/4" Fenton Dragon and Lotus 8 Ruffled Bowl - Dk. Mari. (nice color and irid.)
- _____ 149. 8 1/4" Fenton Dragon and Lotus 8 Ruffled Bowl - Dk. Mari. (nice satiny color and irid.)
- _____ 150. **8 3/4" FENTON BLACKBERRY 2 ROW OPEN EDGE SWUNG VASE - DK. MARI. (VERY RARE AND VERY DESIRABLE; A REAL TOUGHIE; GREAT COLOR)**
- _____ 151. **4 1/2" FENTON 2 ROW OPEN EDGE 4 SIDED SQUARE HAT - RED (REALLY NICE EXAMPLE IN A SCARCE SHAPE)**
- _____ 152. Fenton 2 Row Open Edge Jack in the Pulpit Hat - Aqua (a beautiful example in a very desirable shape)
- _____ 153. Fenton 2 Row Open Edge 6 Ruffled Hat - Lt. Amy. / Mari. (very scarce color; sorta Horehound in shade)
- _____ 154. 6" Fenton 2 Row Open Edge Large Size 6 Ruffled Hat - Celeste Blue (very rare and very desirable; has one check in lattice)
- _____ 155. 13 1/2" Tall Fenton Wide Panel Stretch Swung Vase - Ice Green (really tall example; nice color and irid.)
- _____ 156. 12 1/4" Tall Fenton April Showers Swung Vase - Blue (very scarce with nice satiny finish)
- _____ 157. (2) 11 1/2" - 12 1/4" Fenton April Showers Swung Vases - Green (selling choice - shorter one is a bit silvery)
- _____ 158. (2) 12 1/2" - 13 1/4" Tall Fenton April Showers Swung Vases - Dk. Mari. (selling choice - both pretty nice items)
- _____ 159. 7 1/2" Tall Fenton Long Thumbprint Flared Vase - Green (nice irid.)
- _____ 160. **FENTON BLACKBERRY SPRAY CRIMPED EDGE JACK IN THE PULPIT HAT - RED (SUPER EXAMPLE - NICE RED COLOR WITH SATINY FINISH)**
- _____ 161. Fenton Pond Lily 4 Sided 2 Handled Bon Bon - Amy. (very scarce color; nice satiny finish)
- _____ 162. Fenton Butterflies 2 Handled 4 Sided Bon Bon - Green (nice satiny finish)
- _____ 163. Fenton Persian Medallion 2 Handled 4 Sided Bon Bon - Blue (nice satiny finish)
- _____ 164. 6 1/2" Fenton Persian Medallion Flat Plate - Mari. (average irid.)
- _____ 165. Fenton Persian Medallion Hair Receiver - Dk. Mari. (super color; excellent irid.)
- _____ 166. Fenton Persian Medallion Large Ruffled Crimped Stemmed Compote - Mari. (scarce color; nice satiny finish)
- _____ 167. 10" Fenton Persian Medallion Large 6 Ruffled Bowl - Amy. (scarce color for this size - satiny!)
- _____ 168. 5 1/2" Fenton Persian Medallion Flared Sauce - Blue (really nice color and irid.)
- _____ 169. Fenton Pastel Swan Master Salt - Celeste Blue (nice color)
- _____ 170. 11" Tall Fenton Boggy Bayou Swung Vase - Amy. (rare for this pattern to be found in this color)
- _____ 171. 13 3/4" Tall Fenton Beaded Bullseye Large Swung Vase - Blue (scarce pattern; really nice color and irid.)
- _____ 172. 15" Tall Fenton Diamond Point Columns Large Swung Vase - Dk. Mari. (satiny; nice)
- _____ 173. 9 3/4" Fenton Lotus and Poinsettia Large 8 Ruffled ftd. Bowl - Mari. (satiny finish)
- _____ 174. 6 1/2" Fenton Lotus and Grape 6 Ruffled ftd. Bowl - Mari. (really nice irid.)
- _____ 175. 8 3/4" Fenton Orange Tree with Trunk 8 Ruffled Bowl - Blue / Elec. Blue (really nice color and irid.; very attractive)
- _____ 176. Ftd. Orange Tree Tumbler - Blue (nice color and irid.; pinhead)
- _____ 177. Ftd. Orange Tree Tumbler - Dk. Mari. (really nice color and irid.)
- _____ 178. 6 1/4" Fenton Pine Cone Flat Plate - Dk. Mari. (nice satiny finish)
- _____ 179. 6 1/2" Fenton Pine Cone Ice Cream Shaped Bowl - Blue (larger variation; satiny finish)
- _____ 180. 11" Fenton Stag and Holly Ball ftd. Ice Cream Shaped Bowl - Mari. (nice satiny finish)
- _____ 181. 9" Fenton Peacock at the Urn 8 Ruffled Bowl - Mari. (scarce; pretty nice color and irid.)
- _____ 182. 8 3/4" Fenton Peacock and Grape 8 Ruffled Bowl - Dk. Mari. (super example)
- _____ 183. 8 3/4" Fenton Captive Rose 6 Ruffled Bowl - Green (really nice - a beaut)
- _____ 184. 8 1/2" Fenton Heart and Vine Bowl with 3 in 1 Edge - Green (nice example; nice shape)
- _____ 185. 9" Fenton Thistle 6 Ruffled Bowl - Amy. (satiny)
- _____ 186. 8 1/2" Fenton Chrysanthemum 6 Ruffled Bowl - Mari. (satiny finish)
- _____ 187. Fenton Peacock at the Urn Stemmed 6 Ruffled Compote - Mari. (satiny finish)
- _____ 188. **7 1/2" FENTON ACORN LOW 8 RUFFLED BOWL - AMBER (VERY SCARCE COLOR - LOOKS LIME COLORED)**
- _____ 189. 7 1/2" Fenton G & C Low 8 Ruffled Bowl - Mari. (nice satiny finish)
- _____ 190. 15 1/2" Fenton Rustic Mid-Size Swung Vase - Dk. Mari. (super example; nice color and rich irid.)

- _____ 191. 15 1/4" Fenton Rustic Mid-Size Vase with Tight Candy Ribbon Edge - Mari. (scarce; nice)
- _____ 192. 8 1/4" Fenton 3 Diamonds and Bows Swung Vase - Amy. (scarce color; tiny flake on base)
- _____ 193. 11" Fenton Plume Panels Swung Vase - Dk. Mari. (nice satiny finish)
- _____ 194. Fenton Ribbed ftd Jack in the Pulpit Vase - Mari. (tilts a bit; very unusual)
- _____ 195. Fenton Blackberry Spray 2 Sided Hat - Mari. / Amber (dark satiny finish - looks just like #188)
- _____ 196. (2) Fenton Blackberry Spray 4 Sided Hats - Mari. / Lime Green (scarce color; selling choice)
- _____ 197. 9 1/2" Fenton Fine Rib Swung Vase - Amy. (very scarce color; sorta lavender)
- _____ 198. 1- 8 3/4", 1-9 3/4" Fenton Fine Rib Swung Vases - Blue (nice color and irid.; selling choice)
- _____ 199. 5 1/2" Tall Fenton Buttermilk Goblet Flared 6 Ruffled Compote - Green (satiny irid.)
- _____ 200. (2) Fenton Leaf Tier Tumblers - Mari. (scarce pattern - one tiny nick on one toe; selling choice)

START OF SECOND SESSION

- _____ 201. Fenton Lattice and Grape Tumbler - Dk. Mari. (super, super irid.)
- _____ 202. Fenton Butterfly and Berry Tumbler - Mari. (satiny)
- _____ 203. Fenton Prism Band Enamelled Decorated Tumbler - Amy. (nice decor.)
- _____ 204. Fenton Miniature Blackberry Compote - Blue (scarce; satiny)
- _____ 205. Fenton Miniature Blackberry Compote - Dk. Mari. (very scarce; satiny finish; nice example)
- _____ 206. 10 1/2" Fenton Diamond Rib Swung Vase - Green (satiny; nice)
- _____ 207. 10 1/2" Fenton Diamond Rib Swung Vase - Amy. (satiny; nice)
- _____ 208. 6" Fenton Cherry Chain 6 Ruffled Bowl - Mari. (satiny)
- _____ 209. Fenton Ribbed Interior Compote Vase - Amber (scarce with great color)
- _____ 210. Fenton Orange Tree Butter Lid only - Blue (a beaut - really tough if ya need it)
- _____ 211. Fenton Stretch Plain 2 Sided Stemmed Compote - White (nice irid.)
- _____ 212. Jenkins Cut Flowers Large Cylinder Vase - Dk. Mari. (super example; great color and irid.)
- _____ 213. Westmoreland Prisms Handled Stemmed Compote - Teal (very scarce; really nice example)
- _____ 214. Imperial Grape Wine Decanter Base only - Dk. Mari. (nice color; no stopper)
- _____ 215. **16 1/2" TALL X 5" BASE IMPERIAL MORNING GLORY LARGE SWUNG VASE - MARI. / CLEAR (VERY SCARCE; A NICE LARGE ITEM)**
- _____ 216. **12 1/2" TALL X 5" BASE IMPERIAL MORNING GLORY LARGE FLARED VASE - DK. MARI. (SUPER DARK EXAMPLE; VERY DESIRABLE)**
- _____ 217. 14 1/2" Tall x 4" Base Imperial Ribbed (Parlor Panels) Swung Vase - Mari. (scarce; nice color and irid.)
- _____ 218. 5 1/4" Tall Imperial Miniature Morning Glory Swung Vase - Dk. Mari. (desirable with nice flare)
- _____ 219. 6 3/4" Tall Imperial Miniature Morning Glory Swung Vase - Dk. Mari. (nice dark color; not flared too much)
- _____ 220. **5 1/2" IMPERIAL MORNING GLORY AND DRAPE MINIATURE SWUNG VASE - DARK, DARK MARI. (ABSOLUTELY SUPER EXAMPLE; FANTASTIC)**
- _____ 221. 8 1/4" Imperial Ripple Small Swung Vase - Pur. (super color and irid.; really cute item)
- _____ 222. 12 1/2" Imperial Ripple Standard Swung Vase - Pur. (another really nice example; great irid.)
- _____ 223. 10" Imperial Ripple Standard Swung Vase - Green / Lime Green (odd base color; has Helios irid.)
- _____ 224. 10" Imperial Ripple Standard Swung Vase - Dk. Mari. (nice color and irid.)
- _____ 225. 9" Imperial Ripple Small Swung Vase - White (meant to be Clambroth - an oddball)
- _____ 226. 11 1/4" Tall Imperial Interior Panels Swung Vase - White (signed with Iron Cross - neat!)
- _____ 227. Imperial Ribbed Jack in the Pulpit Vase - Lt. Mari. (gets clear at the base)
- _____ 228. Imperial Flute Toothpick Holder - Pur. (nice color; may have pinhead)
- _____ 229. 8" Imperial Hattie Deep Round Bowl - Mari. (nice color and irid.)
- _____ 230. Imperial Flute #3 Tumbler - Dk. Mari. (super dark color; very scarce and desirable)
- _____ 231. 6" Imperial Star and File Flat Plate - Dk. Mari. (cute item with nice color and irid.)
- _____ 232. Triad Hatpin - Dark (nice color)
- _____ 233. Moray Beetle Hatpin - Dark (nice color)
- _____ 234. Series of 10 Hartung Pattern Books
- _____ 235. **9 1/2" N POPPY SHOW PLATE - MARI. (VERY SCARCE AND DESIRABLE; NICE PINK HIGHLIGHTS)**
- _____ 236. N Springtime Tumbler - Mari. (scarce; nice color)
- _____ 237. N G & C 7 pc. Water Set - Pur. (scarce; nice color and irid.; well matched)
- _____ 238. N G & C 4 pc. Water Set - Mari. (scarce; nice color)
- _____ 239. N Dandelion Tumbler - Pur. (nice color)
- _____ 240. N Oriental Poppy Tumbler - Pur. (average color and irid.)
- _____ 241. N Acorn Burr Table Creamer - Mari. (very scarce; nice color - perfect)
- _____ 242. **N G & C SHOT GLASS - DK. MARI. (VERY SCARCE; NICE DARK COLOR)**
- _____ 243. **N G & C LARGE ICE CREAM SHAPED BOWL WITH BASKETWEAVE EXTERIOR - PUR. (RARE AND DESIRABLE; GETTING TOUGH TO FIND)**

- ____ 244. N Three Fruits Medallion Spatula ftd. Ruffled Bowl - Amy. (scarce; desirable)
- ____ 245. N Star of David and Bows Domed Ruffled Bowl - Amy. (scarce; desirable)
- ____ 246. **N DRAPERY TRI-CORNERED CANDY DISH - ICE BLUE (VERY SCARCE; NICE IRID. WITH PRETTY GOOD FEET)**
- ____ 247. N Grape and Gothic Arches Large Berry Bowl - Elec. Blue (very nice color and irid.; very scarce)
- ____ 248. N Grape and Gothic Arches Small Berry Bowl - Blue (scarce; nice irid.)
- ____ 249. (3) N Grape and Gothic Arches Tumblers - Mari. (nice color and irid.; selling choice)
- ____ 250. **12 - 14" TALL N TREE TRUNK ELEPHANT'S FOOT FUNERAL VASE - PUR. (VERY RARE AND VERY DESIRABLE WITH WONDERFUL IRID.; CRACKED)**
- ____ 251. (2) N Memphis Handled Punch Cups - Mari. (selling so much each for pair)
- ____ 252. N Fine Cut and Roses ftd. Candy Dish - Pur. (nice color)
- ____ 253. 10" N Tree Trunk Swung Vase - Dk. Pur. (nice dark color)
- ____ 254. **12 - 13" N FOUR PILLARS SWUNG VASE WITH HOWARD FURNITURE ADVERT. - GREEN (VERY SCARCE ADVERTISING ITEM; NICE COLOR & IRID.)**
- ____ 255. 7 1/2" N Stretch Flared Turned Out Small Console Bowl - Opaque Blue (scarce; nice color)
- ____ 256. N Acorn Burr Tumbler - Pur. (really nice irid.)
- ____ 257. **N DAISY AND DRAPE FTD. TURNED IN VASE - WHITE (VERY SCARCE AND VERY DESIRABLE; NICE AND FROSTY)**
- ____ 258. N Raspberry Tumbler - Pur. (nice color & irid.)
- ____ 259. N Ground Cherries Enamelled Decorated Tumbler - Blue (nice color & irid.)
- ____ 260. N Three Fruits Medallion Stippled ftd Ruffled Bowl with Meander Exterior - Pur. (scarce; really nice irid.)
- ____ 261. N Wishbone ftd. Ruffled Bowl - Pur. (nice color)
- ____ 262. N G & C Small Size ftd. Fruit Bowl - Pur. (nice color and irid.)
- ____ 263. **N G & C TABLE SIZE 6 PC. PUNCH SET - GREEN (RARE AND DESIRABLE; NICE COLOR AND IRID.; A TOUGH COLOR)**
- ____ 264. **N GREEK KEY 8 RUFFLED BOWL WITH RIBBED EXTERIOR - PASTEL MARI. (VERY SCARCE AND VERY DESIRABLE PATTERN; NICE IRID.)**
- ____ 265. 12" N Diamond Point Swung Vase - Pur. (nice irid.)
- ____ 266. 10" N Leaf Columns Swung Vase - Pur. (average color)
- ____ 267. N Interior Panelled Stretch Round Bowl - Blue Opaque (scarce item)
- ____ 268. 8" M'burg Mayan Ice Cream Shaped Bowl - Green (radium and very desirable; nice irid.)
- ____ 269. 8 1/2 - 9" M'burg Holly Sprig Variant Ruffled Crimped Edge Bowl - Green (radium and very desirable; super irid.)
- ____ 270. **M'BURG LETTERED COURTHOUSE 6 RUFFLED BOWL - AMY. (RARE AND VERY DESIRABLE; SUPER RADIUM EXAMPLE)**
- ____ 271. **9 1/2" M'BURG MANY STARS 5 POINTED ICE CREAM SHAPED BOWL - AMY. (RARE AND VERY DESIRABLE; SUPER RADIUM - NICE)**
- ____ 272. **10" M'BURG PEACOCK AT THE URN LARGE ICE CREAM SHAPED BOWL - MARI. (VERY SCARCE ITEM; SATINY AND VERY DESIRABLE)**
- ____ 273. 10" M'burg Rosiland Large 6 Ruffled Bowl - Mari. (satiny and very scarce; nice color and irid.)
- ____ 274. 10" M'burg Holly Whirl 6 Ruffled Bowl - Amy. (scarce; nice satiny finish)
- ____ 275. **U.S. GLASS COSMOS AND CANE TUMBLER WITH MILNER ADVERT. - MARI. (VERY SCARCE ITEM - HAVEN'T SOLD MANY LATELY)**
- ____ 276. 1908 St. Paul, Minn. Shriner's Goblet - Cranberry Flash (scarce; very attractive)
- ____ 277. 1909 Louisville Shriner's Champagne Glass - Clear (scarce)
- ____ 278. 1910 New Orleans Shriner's Champagne Glass - Clear (scarce)
- ____ 279. 1911 Rochester Shriner's Champagne Glass - Clear (scarce)
- ____ 280. **8" WESTMORELAND SMOOTH RAYS 6 RUFFLED BOWL - BLUE OPAQUE (VERY SCARCE; NICE COLOR AND TEXTURE)**
- ____ 281. (6) Dugan Waterlily and Cattail Tumblers - Mari. (nice color; selling so much each for set)
- ____ 282. Dugan Stork and Rushes Handled Punch Cup - Amy. (nice color)
- ____ 283. Dugan Panelled Cherries ftd. Ruffled Bowl - P. Opal. (nice opal.)
- ____ 284. Dugan Windflower Handled Gravy Boat - Mari. (scarce shape)
- ____ 285. 9 1/2" Dugan Lined Lattice Swung Vase - Pur. (nice color and irid.)
- ____ 286. 6" Dugan Target Squatty Flared Vase - P. Opal. (scarce and desirable shape; nice opal.)
- ____ 287. Dugan Fishermans Handled Mug - Pur. (scarce; nice detail and irid.)
- ____ 288. Dugan Heavy Iris Tumbler - Pur. (silvery irid.)
- ____ 289. Dugan Pastel Swan - Pur. (light irid.)
- ____ 290. **9" DUGAN APPLE BLOSSOM TWIG LOW RUFFLED BOWL - PUR. (PLAIN EDGE - BASKETWEAVE EXTERIOR)**
- ____ 291. 5" Dugan Cherries Deep Round Sauce with Jewelled Heart Exterior - P. Opal. (scarce shape)
- ____ 292. 5 1/2" Dugan Petal and Fan 6 Ruffled Sauce with Jewelled Heart Exterior - P. Opal. (light)
- ____ 293. Dugan S Repeat Handled Punch Cup - Pur. (silvery on one side)
- ____ 294. Dugan Thumbprint Deep 8 Ruffled Stemmed Compote - P. Opal. (nice opal.)
- ____ 295. Dugan Question Mark Stemmed Handled Bon Bon - P. Opal. (nice opal.)

- _____ 296. Dugan Maple Leaf Table Creamer - Blue (very scarce color for this item; nice)
- _____ 297. **9" DUGAN FANCIFUL FLARED PLATE - WHITE (VERY SCARCE; NICE IRID. - VERY DESIRABLE)**
- _____ 298. Dugan Double Stem Rose Domed Ruffled Bowl - White (scarce; nice irid.)
- _____ 299. **DUGAN FAN FTD. OCCASIONAL GRAVY BOAT - PUR. (VERY SCARCE AND DESIRABLE IN THIS COLOR)**
- _____ 300. **DUGAN GRAPE DELIGHT 6 FTD. NUT BOWL - PUR. (SUPER, SUPER IRID. - VERY NICE)**
- _____ 301. **10" DUGAN PETAL AND FAN LARGE 6 RUFFLED BOWL - PUR. (VERY SCARCE IN THIS SIZE; NICE IRID.)**
- _____ 302. (3) Fenton Butterfly and Berry Tumblers - Mari. (selling so much each for set)
- _____ 303. Fenton Orange Tree Flared Punch Top Only - Mari. (nice color and irid.)
- _____ 304. Fenton Waterlily and Cattail 7 pc. Berry Set - Mari. (very scarce set; not many seen)
- _____ 305. Fenton Orange Tree Handled Punch Cup - Mari. (nice color)
- _____ 306. Fenton Miniature Blackberry Compote - Blue (nice color and irid.)
- _____ 307. Fenton Holly Ruffled Stemmed Compote - Blue (nice color)
- _____ 308. **19 1/2" TALL X 5 1/4" BASE FENTON RUSTIC SWUNG FUNERAL VASE - MARI. (RARE, DESIRABLE; NICE DARK COLOR AND IRID.)**
- _____ 309. **19" TALL X 5 3/8" BASE FENTON RUSTIC SWUNG FUNERAL VASE - BLUE (RARE, VERY DESIRABLE; NICE COLOR AND IRID.)**
- _____ 310. 19" Tall x 5 3/8" Base Fenton Interior Panelled Swung Funeral Vase - Ruby (not Carnival)
- _____ 311. 20 1/2" Tall x 5 1/2" Base Fenton Interior Panelled Swung Funeral Vase - Cobalt Blue (not Carnival)
- _____ 312. Fenton Orange Tree Standard Flared Handled Mug - Blue (nice color)
- _____ 313. **FENTON BLACKBERRY SPRAY 6 RUFFLED HAT - REVERSE AMBERINA OPAL. (VERY RARE AND VERY DESIRABLE; NICE OPAL. EDGE - A SUPER ITEM)**
- _____ 314. **7 1/2" FENTON ACORNS ICE CREAM SHAPED BOWL - RED (RARE AND DESIRABLE; LOOKS RED; REALLY NICE)**
- _____ 315. 8 1/2" Fenton Stag and Holly Deep Ruffled Ball ftd. Bowl - Blue (very scarce item; always desirable; satiny irid.)
- _____ 316. 8 1/2" Fenton Orange Tree Ice Cream Shaped Bowl - White (very scarce; nice shape and irid.)
- _____ 317. **SURPRISE**
- _____ 318. 10 1/2 - 11" Fenton Chrysanthemum Large Round ftd. Bowl - Lt. Mari.
- _____ 319. Fenton Birds and Cherries 2 Handled Bon Bon - Dk. Mari. (scarce)
- _____ 320. **9" FENTON PLAID 8 RUFFLED BOWL - MARI. (VERY SCARCE AND DESIRABLE PATTERN)**
- _____ 321. Imperial Grape Punch Base Only - Dk. Mari. (tough to find when ya want one)
- _____ 322. **IMPERIAL STAR AND FILE SPOONER - SMOKE (VERY RARE COLOR FOR THIS ITEM)**
- _____ 323. (3) Imperial Fieldflower Tumblers - Dk. Mari. (selling choice; nice and dark)
- _____ 324. Imperial Octagon Tumbler with Polished Base - Mari. (nice color)
- _____ 325. **IMPERIAL OCTAGON BUTTER BASE ONLY - PUR. (EXTREMELY DIFFICULT ITEM TO FIND; RARE)**
- _____ 326. Imperial Balloons Covered Dresser Box - Mari. (scarce item - different)
- _____ 327. Imperial Panelled Covered Candy Dish - Mari.
- _____ 328. Imperial Fashion Tumbler - Lt. Smoke (scarce; sorta pastel finish)
- _____ 329. 8 1/2" Imperial Embossed Scroll 8 Ruffled Bowl with File Exterior - Pur. (typical Imperial color and irid. - nice)
- _____ 330. (2) 5" Imperial Embossed Scroll Ind. 8 Ruffled Sauces with File Exterior - Pur. (super irid.; selling choice)
- _____ 331. **6" IMPERIAL GRAPE FLAT PLATE - HELIOS GREEN (VERY SCARCE; GETTING TOUGH TO FIND)**
- _____ 332. 6" Imperial Grape Flat Plate - Dk. Mari. (nice dark color)
- _____ 333. 10 - 11" Imperial Ripple Swung Vase - Amber (very scarce color; nice irid.)
- _____ 334. **IMPERIAL GRAPE 8 PC. WINE SET - PUR. (RARE AND VERY DESIRABLE; REALLY NICE COLOR AND IRID.)**
- _____ 335. **N ACORN BURRS 4 PC. TABLE SET - GREEN (VERY RARE AND VERY DESIRABLE SET; TOUGH TO FIND IN THIS COLOR)**
- _____ 336. N Singing Birds Ind. Berry Bowl - Emerald Green (very scarce; a beauty with blue highlights)
- _____ 337. 7" N Tree Trunk Squatty Flared Vase - Green (scarce size; nice color and irid.)
- _____ 338. **IMPERIAL STRETCH COLONIAL FLUTE TALL TUMBLER - RED (RARE ITEM; GREAT COLOR AND IRID.; NICE!)**
- _____ 339. 8 1/2 - 9" Imperial Pansy 8 Ruffled Bowl - Amber (very scarce color for this item)
- _____ 340. **M'BURG SEACOAST PIN TRAY - GREEN (RARE AND VERY DESIRABLE; PERFECT WITH NICE COLOR)**
- _____ 341. **M'BURG HOBSTAR AND FEATHER GIANT ROSE BOWL - AMY. (VERY RARE AND VERY DESIRABLE; HAS CHIP ON ONE POINT)**
- _____ 342. **FENTON PERSIAN MEDALLION SMALL SIZE STEMMED RUFFLED COMPOTE - GREEN (VERY SCARCE COLOR FOR THIS ITEM)**
- _____ 343. Fenton Panelled Dandelion 7 pc. Tankard Water Set - Mari. (scarce set; has average color and irid.)

344. Fenton Orange Tree 10 pc. Ruffled Punch Set - Mari. (very nice set; nice color and irid.)
345. **N PEACOCK AT THE URN IND. ICE CREAM BOWL - AQUA OPAL. (VERY RARE AND VERY DESIRABLE; HAS LIGHT MARI. OVERLAY)**
346. **N PEACOCK AT THE URN IND. ICE CREAM BOWL - GREEN (RARE AND VERY DESIRABLE; BRIGHT BASE COLOR, NICE IRID.)**
347. 9 1/2 - 10" N Tree Trunk Square Topped Vase - Blue (unusual shaped item; has red highlights)
348. 11" N Diamond Points Swung Vase - Lt. Amy. (odd base color; nice irid.)
349. **9" N DRAPERY SWUNG VASE - WHITE (VERY SCARCE AND DESIRABLE; PRETTY GOOD FEET; NICE IRID.)**
350. **N INTERIOR SWIRL BULBOUS RUFFLED TOP HANDLED WATER PITCHER - GREEN / MARI. (ACTUALLY QUITE A RARE ITEM IN THIS COLOR)**
351. N G & C Cologne Bottle and Stopper - Pur. (scarce; nice color and irid.)
352. 8 1/2 - 9" N G & C Bowl with Pie Crust Edge and Plain Exterior - Pur. (nice color and irid.)
353. **8" TALL FOSTORIA BROCAIDED ACORNS FLARED BULBOUS VASE - ICE BLUE (VERY SCARCE ITEM; NICE COLOR AND IRID.)**
354. **12" FOSTORIA BROCAIDED PALMS FTD. FLARED CONSOLE BOWL - ICE GREEN (VERY SCARCE ITEM IN THIS PATTERN; NICE)**
355. **DUGAN QUILL TUMBLER - MARI. (RARE AND DESIRABLE; NICE COLOR AND IRID.)**
356. **DUGAN SWAN MASTER SALT - P. OPAL. (RARE AND VERY DESIRABLE; OPAL. ON HEAD)**
357. Dugan Windflower 10 Ruffled Bowl - Blue Opal. (sorta scarce - not Carnival)
358. 8 1/4" M'burg Mayan Ice Cream Shaped Bowl - Green (radium and very attractive; desirable)
359. 8" M'burg Strawberry Wreath 6 Ruffled Bowl - Green (radium and very desirable)
360. Imperial Ripple Mid Size Squatty Flared Vase - Pur. (very desirable size; really nice irid.)
361. Imperial Ripple Small Size Squatty Flared Vase - Pur. (another very nice example)
362. Imperial Optic Buttons Handled Punch Cup, signed with Iron Cross - Mari. (rare item; the usual nice color and irid.)
363. 8 1/2" Fenton Two Flowers Collar Based Ice Cream Shaped Bowl - Mari. (rare variation - usually is footed)
364. **FENTON ROSE SPRAY STEMMED JACK IN THE PULPIT COMPOTE - ICE GREEN (RARE AND VERY DESIRABLE PASTEL ITEM; NICE IRID.)**
365. **8 1/2" FENTON PEACOCK AND GRAPE RUFFLED BOWL - POWDER BLUE / MARI. (VERY SCARCE BASE GLASS COLOR)**
366. U.S. Glass Field Thistle Handled Water Pitcher - Mari. (very scarce item; nice color and detail)
367. N G & C Tumbler - Dk. Mari. (super color and irid.)
368. N Oriental Poppy Tumbler - Pur. (average irid.)
369. N G & C Plate with Basketweave Exterior - Pur. (scarce; nice color, sorta crooked)
370. Fenton Two Flowers Spatula ftd. Rose Bowl - Blue (very scarce item in this color and shape; nice)
371. Fenton Ten Mums Tumbler - Blue (really nice example)
372. Fenton Orange Tree ftd. Tumbler - Blue (very scarce; nice color and irid.; good feet)
373. Imperial Star and File Tumbler - Mari. (nice color and irid.)
374. Westmoreland Fruit Salad Punch Bowl and Base - Mari. (very scarce and underpriced item)
375. **DUGAN GRAPE ARBOR / INVERTED FAN AND FEATHER EXTERIOR FTD. FRUIT BOWL - MARI. (VERY SCARCE ITEM; SATINY COLOR AND IRID.)**
376. Dugan Maple Leaf 7 pc. Water Set - Dk. Mari. (really nice example; nice dark color and irid.)
377. Dugan Golden Harvest 6 pc. Wine Set - Mari. (scarce set; nice average color)
378. (6) Dugan S Repeat Handled Punch Cups - Pur. (selling so much each for set; silvery irid.)
379. **9" FENTON PEACOCK AT THE URN FLAT PLATE - BLUE (VERY SCARCE AND VERY DESIRABLE; REALLY NICE COLOR AND IRID.; GREAT DETAIL)**
380. **N PEACOCKS PLATE WITH RIBBED EXTERIOR - ICE GREEN (VERY SCARCE AND DESIRABLE; REALLY NICE COLOR AND IRID. - GREAT)**
381. N Good Luck Ruffled Bowl with Basketweave Exterior - Mari. (very scarce and very desirable)
382. 10" N Tree Trunk Standard Swung Vase - Dk. Mari. (nice color and irid.)
383. N Strawberry Ruffled Bowl with Basketweave Exterior - Dk. Mari. (nice color and irid.)
384. Sowerby Pineapple Rose Bowl - Dk. Mari. (nice color and irid.)
385. Cambridge Inverted Feather Stemmed Parfait - Mari. (scarce; nice color and irid.)
386. 7 1/2" Cambridge Inverted Strawberry Ice Cream Shaped Bowl - Green (nice color and irid.)
387. Embroidered Glass Case, Beaded - Blue Irid. (unusual item)
388. Purse with Tapestry and Iridized Beads - Dark (nice and unusual)
389. Diamond Point Swung Vase - Dk. Mari. (not sure of maker; nice color)
390. **9" FENTON PLAID RUFFLED BOWL - MARI. (VERY SCARCE ITEM; NICE SATINY FINISH)**
391. 6" Fenton Feathered Serpent Small Tri-Cornered Sauce - Amy. (scarce shape; desirable)
392. 8" Fenton Ribbon Tie Round Bowl with Candy Ribbon Edge - Green (nice satiny irid.)

- _____ 393. 8 1/2" Fenton Ribbon Tie Bowl with 3 in 1 Edge
- Amy. (nice satiny irid.)
- _____ 394. **5" FENTON LITTLE FLOWERS SMALL RUFFLED SAUCE - SMOKEY BLUE (ODD BASE COLOR WITH NICE IRID.)**
- _____ 395. Fenton Iris Stemmed Ruffled Compote - Dk. Mari. (nice dark color)
- _____ 396. Fenton Lotus and Poinsettia ftd. Ruffled Sauce - Mari. (nice color)
- _____ 397. 7" Fenton Stippled Rays Plate - Mari. (really nice color)
- _____ 398. Dugan Grape Delight ftd. Rose Bowl - Amy. (really nice example with perfect feet)
- _____ 399. 7" Dugan Bells and Beads Small Ruffled Bowl - Pur. (scarce; nice color)
- _____ 400. **8 1/2 - 9" DUGAN FANCIFUL BOWL WITH 3 IN 1 EDGE - P. OPAL. (VERY SCARCE COLOR FOR THIS ITEM)**
- _____ 401. 8" Imperial Windmill Ruffled Bowl - Pur. (really nice color and irid.; a beaut)
- _____ 402. 11" Imperial Floral and Optic ftd. Chop Plate - Pastel Mari. (really nice irid.)
- _____ 403. 8 1/2" Imperial Cobblestones Ruffled Bowl - Pur. (goldish irid.)
- _____ 404. Imperial Waffle Block Handled Basket - Mari. (nice irid.)
- _____ 405. SURPRISE!

NOTES

CHECK OUT BURNS AUCTION SERVICE ON THE WEB!

Visit our new Web site for information on upcoming auctions, complete auction listings and photos of auction highlights. You can e-mail your bids or requests for information.

<http://zeus.kspress.com/woodsland/burnsauction> email: brnzauctsv@aol.com

