

7TH ANNUAL CARNIVAL GLASS NEW YEAR'S EXTRAVAGANZA



Saturday, January 3, 1998, 9:30 a.m.



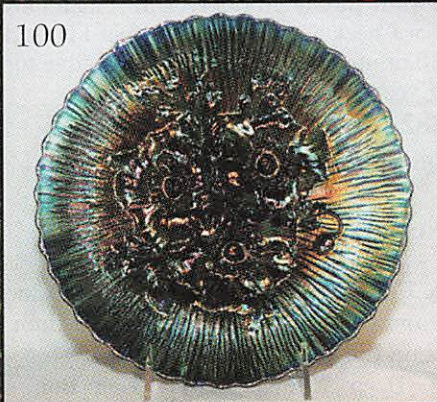
Inclement Weather Date: Sunday, January 4, 1998

Held Inside the Mickey Reichel Auction Center

1 Mile North of I-70 on Hwy. 5, Exit 101, Boonville, Missouri • 20 Miles West of Columbia, MO on I-70

Office Phone: 660-882-5292 • Home Phone: 660-882-5283

100



240



30



53



16



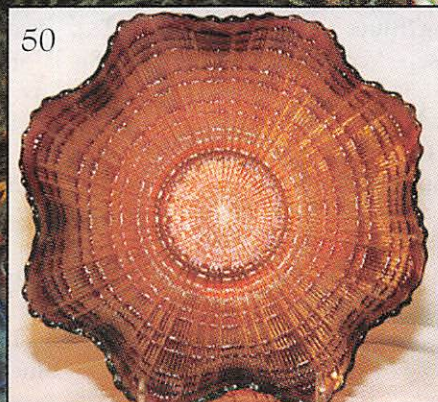
101



144



50



290



SOLD WITH NO RESERVES - NO BUYERS PREMIUM

Held Inside the Mickey Reichel Auction Center

1 Mile North of I-70 on Hwy. 5, Exit 101, Boonville, Missouri • 20 Miles West of Columbia, MO on I-70
Preview Friday 12 p.m. - 6 p.m. and 7:30 a.m. - 9:30 a.m. Day of Auction


Make Reservations NOW at one of these local motels:


Days Inn: 660-882-8624 • Comfort Inn: 660-882-5317 • Super 8: 660-882-2900

Auction consists of Rarity, Great Irid. and Variety

WRITE IN BIDS: If you are unable to attend the auction, we will be happy to accept absentee bids which must be received by THURSDAY, January 1, 1998. Don't Delay. **FOR AUCTION PRICE RESULTS:** Send S.A.S.E and \$3.00 to 516 Third Street, Boonville, MO 65233.

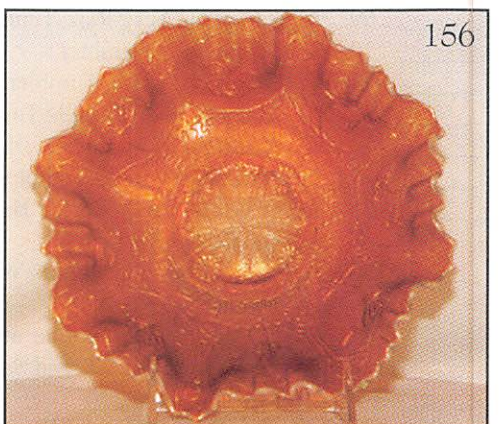
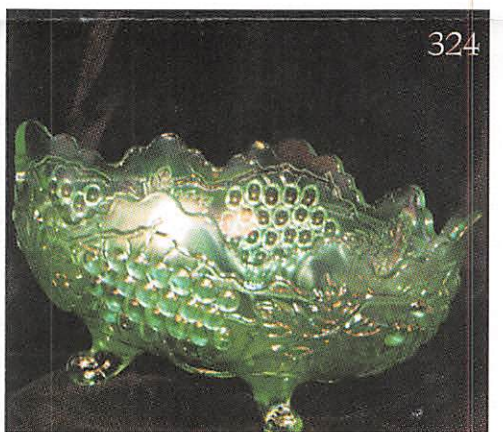
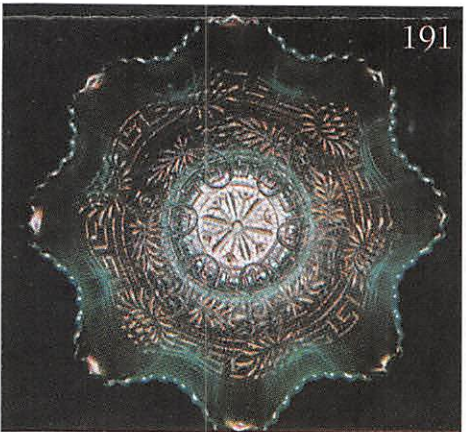
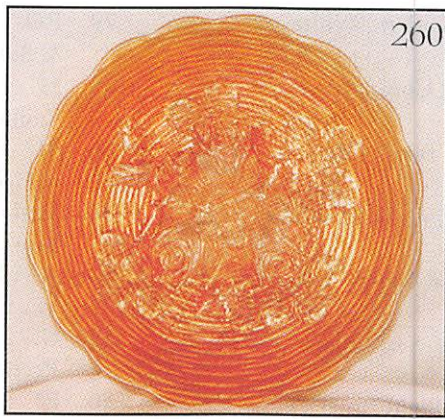
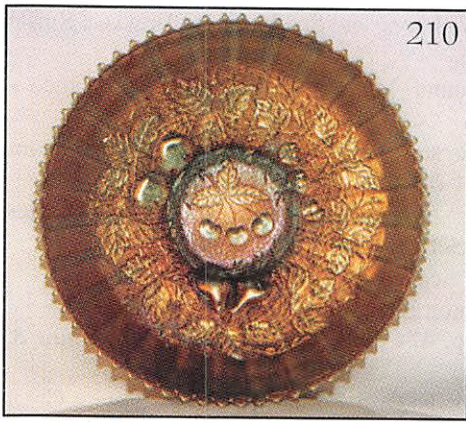
PLEASE NOTE: There is a \$5 handling charge for each successful bid which will be added to the selling price for all write-in bids. This is in addition to the cost of postage, insurance and packing. Your write-in bid will be entered just as if you are present and bidding. Successful bidders will be notified in 1 to 3 days by the auctioneer (so be sure to include your phone number). Direct mail bids to Auctioneer Mickey Reichel, 516 Third Street., Boonville, MO 65233-1536. Terms: Cash or Check accepted with proper I.D. and Social Security Number and References. Announcements made day of the auction supercede all printed material. Not Responsible for Accidents or Sold Items. No return on any items once they leave the Auction Center (No Exceptions).

 **Call for additional information: 660-882-5292 days or 660-882-5283 evenings.**
FAX: 660-882-5292 (evening hours start FAX transmission after beep)

 **NOTE: Read each line, Bold and Plain print. Our Best New Year's Yet.**

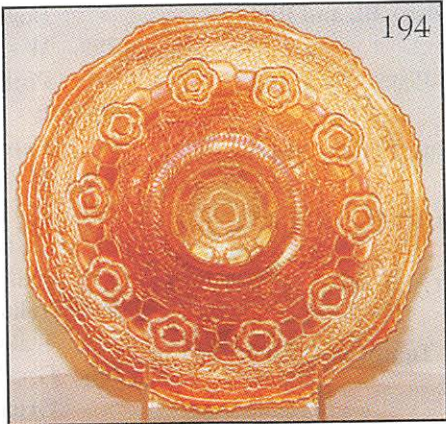
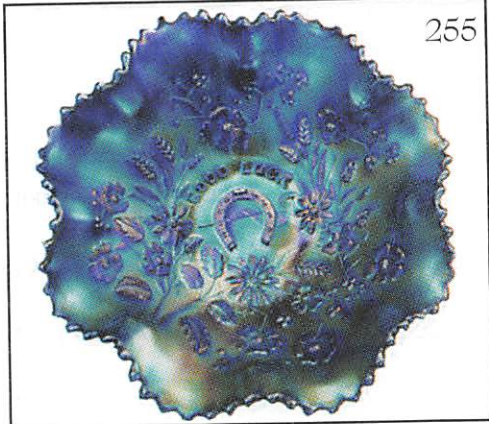
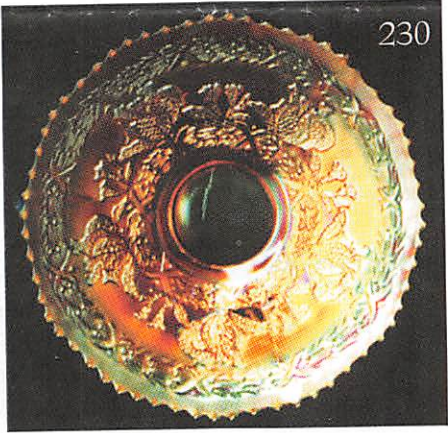
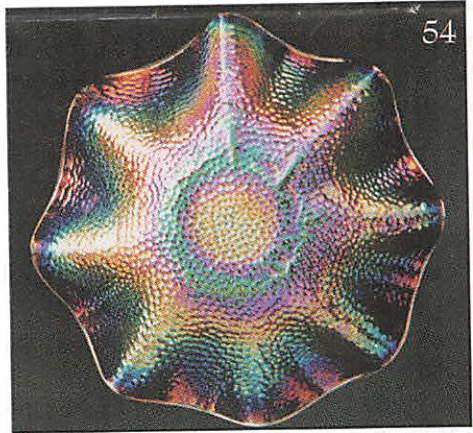
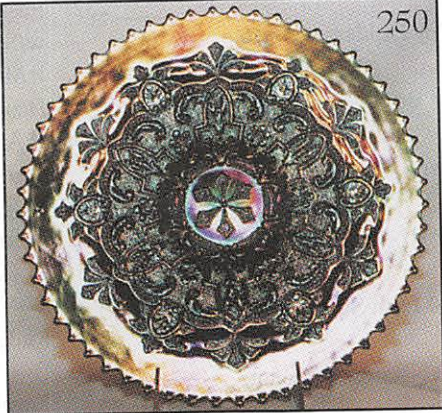
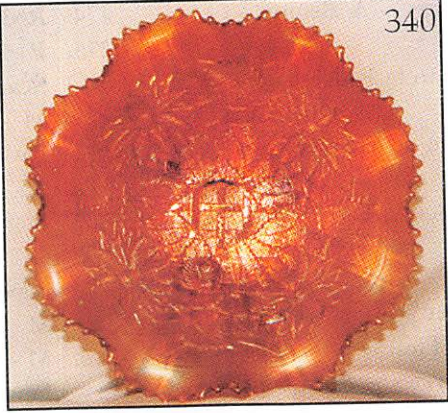
- | | |
|---|---|
| _____ 1. M - 5 1/4" Morning Glory Vase - 5" Top - Great | _____ 24. G - 8 Ruffle Holly Bowl - Super Irid. & Base Color |
| _____ 2. Saph. - 8 1/2" Florentine Candlesticks | _____ 25. G - Grape and Cable Powder Jar & Lid - Minor Roughness on Lid - Rare |
| _____ 3. G - Birds and Cherries Compote - Neat Pattern | _____ 26. G - Mlbg. Deep Whimsey Holly Bon Bon - Radium |
| _____ 4. M - Grape and Cable Candlestick | _____ 27. M - Persian Med. Hair Receiver - Scarce & Nice |
| _____ 5. G - Grape and Cable Candlestick | _____ 28. G - Inverted Feather Cracker Jar - Normal Lid Roughness - Rare |
| _____ 6. M - 3 in 1 Mlbg. Seaweed Bowl - Beauty - Sm. Base Chip | _____ 29. M - Beaded Shell Mug - Dark, Pinks & Golds - Very Nice |
| _____ 7. M - Collar Base Deep Peacock & Grape Ruffle Nut Bowl | _____ 30. Smoke Pastel Amber? - 9" Peacocks Plate - Rib Back - Ultra Rare Pastel |
| _____ 8. G - Fruits and Flowers Bon Bon - Nice One | _____ 31. M - <u>N</u> Strawberry - B.W. Plate - Golds & Pinks |
| _____ 9. M - Stippled Fruits and Flowers Bon Bon - Very Scarce | _____ 32. M - 3 in 1 Lotus and Grape Bowl - Rare Shape - Super Blues & Pinks |
| _____ 10. M - <u>N</u> Wishbone Bowl - Super Irid Flake on Foot | _____ 33. M - Mlbg. Radium 6 Ruffle Ribbon Edge Zig Zag Bowl - Great |
| _____ 11. W - 7" Grapevine Lattice Plate - Stretch Pink & Blues | _____ 34. Brick Red - 8 Ruffle Fenton Holly Bowl - Great One |
| _____ 12. W - 4 1/2" Opening - Frosted Block Rose Bowl - Very Scarce Color | _____ 35. B - 6 Ruffle Fenton Holly Bowl - Super Multi Elec. |
| _____ 13. Lav. A - Rose Show Plate - Rare - Chips on Roses - Still Beautiful | _____ 36. P - 8 Ruffle Imp. Pansy Stippled Bowl - Super Satin |
| _____ 14. Smoke - 10 1/2" Round Imp. Grape Bowl - Rare Color & Size | _____ 37. Lav. P - 8 Ruffle <u>N</u> Grape Leaves Bowl - Beautiful - Irid. |
| _____ 15. B - Ruffle Embroidered Mums Bowl - Very Rare - Minor Nicks - Pretty | _____ 38. B - Ruffle Rib Bk. Good Luck Bowl - Near Elec. |
| _____ 16. E.G. - Rose Show Plate - Super Rarity - Top Piece in the Auction - Emerald w/Blues | _____ 39. Lav. A - 8 Ruffle Dragon & Lotus Bowl - Collar Base - Very Scarce Color |
| _____ 17. Lav. - 10 1/2" <u>N</u> Dia. Points Vase - Very Scarce Color & Pretty | _____ 40. P - <u>N</u> Embroidered Mums Bowl - Rib Bk. - Multi Irid. Rarity |
| _____ 18. P - 8" Ruffle Imp. Open Rose Bowl - Imperials Hot | _____ 41. G - 3 in 1 Edge Concord Bowl - Popular Pattern - Rare Color & Shape |
| _____ 19. M - Stippled Three Fruits Plate - Great Example | _____ 42. Pastel - A.O. Peacocks Bowl - Rib Back - Pastel Irid. Beauty |
| _____ 20. A - Dome Base Dugan Ruffle Vintage Grape Bowl - Rare - Super Irid. | _____ 43. B - Imp. Lustre Rose Fernery Bowl - Rare Imp. Blue |
| _____ 21. M - Mlbg. Strawberry Wreath Compote - Trys to Glow - Black Lite | |
| _____ 22. M - Lattice and Daisy Tankard Pitcher - Dark Top to Bottom | |
| _____ 23. M - Rocco Vase - Little Favorite | |

- _____ 44. M - Cambridge Inverted Feather Whimsey
Compote from Wine
- _____ 45. **Super Red Amb. - Holly Goblet Compote - Rare
& Pretty**
- _____ 46. G - 8 Ruffle Imp. Star of David Bowl - Radium -
Scarce Color
- _____ 47. M - 10" 6 Ruffle Mlbg. Rosalind Bowl - Satin
Beauty
- _____ 48. **Pumpkin M - Lighting Flower Nappy - Very,
Very Nice & Scarce**
- _____ 49. M - N Acorn Burrs 7 pc. Berry Set - Super - 1
Berry Bowl - Chipped
- _____ 50. **Red - Very Rare - Sq. 8 Ruffle Plaid Bowl - Few
Known**
- _____ 51. A - 6 Ruffle Fenton Autumn Acorn Bowl - Super
Irid.
- _____ 52. A - 6 Ruffle Captive Rose Bowl - Also Super Irid.
- _____ 53. **M - 9½" Flat Spat. FTD. Stag and Holly Plate -
Super Pinks & Golds**
- _____ 54. P - 8 Ruffle Imp. Cobblestone Bowl - Super
Example - Elec.
- _____ 55. B - 8 Ruffle Lotus and Grape Bowl - Valued
Pattern - Scarce Color
- _____ 56. **Pumpkin M - 9" Flat - Spat. FTD. Grape and
Cable Plate - Super Golds, Greens & Pinks**
- _____ 57. P - N Daisy and Plume, Rib Int. FTD. Rose Bowl -
Great One
- _____ 58. P - N Beaded Cable, Rib Int. Rose Bowl - Blue &
Purple Irid.
- _____ 59. **M - Dark P.C.E. Nippon Bowl - B.W. Ext. - Rare
Shape w/B.W.**
- _____ 60. P - Imp. Lustre Rose Tumbler - Dark Multi Irid.
- _____ 61. B - Butterfly and Fern VT. Tumbler w/Etched
Initials
- _____ 62. **Smoke - Fashion Tumble - Very Scarce Color**
- _____ 63. Aqua - 7" 6 Ruffle Peacock and Dahlia Bowl -
Scarce Color
- _____ 64. **Blue Opal - 5" Irid. Hobstar & Fruit 5" Sauce -
Rare and Super**
- _____ 65. Celeste B - Wide Panel Cov. Candy Dish - 1864-
1924 - Schiller Lodge Adv. Piece
- _____ 66. **Amy Opal - Kittens Cup & Saucer - Not Irid -
Super Rare - 1 of a Kind?**
- _____ 67. M - Flashed Unknown Pattern Decanter w/4 Shot
Glass Mk. Germany
- _____ 68. **M - Omnibus Rare Water Pitcher - 2nd One
Known - Base Roughness**
- _____ 69. M - Omnibus Very Rare Tumbler
- _____ 70. M - Apple Tree Tumbler
- _____ 71. P - Grape and Cable Tumbler - Great Example
- _____ 72. M - Enamel Pretty Panels Tumbler - A Beauty
- _____ 73. G - Enamel Iris Tumbler w/Prisms Banding
- _____ 74. I.G. - Enamel Orchid Tumbler - Rare
- _____ 75. **Olive G - 8 Ruffle Collar Base Dragon & Lotus
Bowl - Rare Color**
- _____ 76. A - 10" Mlbg. Blackberry Wreath Bowl - 3 in 1
Edge - Satin
- _____ 77. P.O. - Lg. 6 Ruffle Ski Star and Compass Bowl
- _____ 78. P.O. - Garden Path VT. and Soda Gold Sauce Bowl
- Lots of Opal
- _____ 79. P.O. - Wishbone and Spades Sauce Bowl - 8 Ruffle
& Super
- _____ 80. M - Round Mlbg. Blackberry Wreath Sauce -
Radium
- _____ 81. **M - Horse Medallion Flat Plate - Radium
w/Great Detail**
- _____ 82. **Teal G - Mlbg. 10" I.C.S. Hanging Cherries
Bowl - Soft Satin - Rare Color**
- _____ 83. A - Flat Scales 6" Plate
- _____ 84. M - Fenton Holly Plate - Always in Demand
- _____ 85. **G - Imp. 474 Milk Pitcher - Rare - Radium &
Pretty**
- _____ 86. P - Spat. FTD. 3 Fruits Medallion Bowl - Great
Irid. - Nick on Edge
- _____ 87. M - 9½" Cosmos VT. Chop Plate Radium
- _____ 88. A - 8" Spat. FTD. Stag and Holly Bowl - Very Nice
- Scarce Color
- _____ 89. M - 9" Imp. Oval & Round Bowl w/Brides Basket
Frame
- _____ 90. H.A. - Contemporary Flocking Bears - I.C.G.A.
1993 - Spooner - Lg. Tumbler
- _____ 91. **M - Ten Mums Tumbler - Super One**
- _____ 92. **Vas. - 7¼" 6 Ruffle Peacock and Dahlia Bowl -
Rare and Beautiful**
- _____ 93. B - 8 Ruffle Orange Tree Bowl, w/Trunk VT. -
Scarce Super Irid.
- _____ 94. M - 9" Leaf Chain Plate - Great Multi Pinks and
Golds
- _____ 95. M - 8 Ruffle Fenton Peacock and Urn Bowl -
Pinks, Golds & Greens
- _____ 96. **A - 6" 6 Ruffle Mlbg. Peacocks Sa. Bowl - No
Bee or Beads - Super Radium**
- _____ 97. **M - 5¾" I.C.S. Mlbg. Peacocks Bowl - No Bee -
No Beads - 6 Columns - 7 Tail Feathers?**
- _____ 98. M - 11¼" Imp Beaded Bulls Eye Vase - Super
Radium
- _____ 99. Teal - 10" Corinth Vase - Radium Beauty - Scarce
Color
- _____ 100. **Super Elec. B - Poppy Show Plate - Rare -
Magnificent**
- _____ 101. **Super Pinks and Golds Poppy Show Plate -
Super Pumpkinish Marigold**
- _____ 102. Celeste - Concave Diamonds Tumbler - Nice Find
- _____ 103. Metal Brass Decor. Carn. Irid. Hat Pins - A, B, C,
D, E Choice
- _____ 104. B.A. - Hat Pin - Jute Braid
- _____ 105. B.A. - Hat Pin - Cut Flower
- _____ 106. B.A. - Hat Pin - Elegance - Super
- _____ 107. B.A. - Hat Pin - Elegance VT. Small - Super
- _____ 108. B.A. - Hat Pin - Star Center - Super
- _____ 109. B.A. - Hat Pin - Star Center VT. Small - Super
- _____ 110. B.A. - Hat Pin - Bars and Beads
- _____ 111. B.A. - Hat Pin - Cherries - Rare Little Beauty
- _____ 112. B.A. - Hat Pin - Basket Flower - A or B
- _____ 113. B.A. - Hat Pin - Dogwood Rare Beauty
- _____ 114. B.A. - Hat Pin - Diamond Sphere - Super
- _____ 115. B.A. - Hat Pin - Basket Weave
- _____ 116. B.A. - Hat Pin - Spiral Dance
- _____ 117. B.A. - Hat Pin - Four Hearts or Hearts and Cross
- _____ 118. B.A. - Hat Pin - Pen Star
- _____ 119. B.A. - Hat Pin - Fancy w/Rooster - Not Irid



- _____ 120. **P - Imp. Lustre Rose Water Pitcher - Elec. B and Golds**
- _____ 121. G - **N** Grape and Cable Pitcher - Great Greens and Golds
- _____ 122. W - Fenton Frosty Orange Tree Orchard Pitcher
- _____ 123. G - **N** Grape and Cable Tankard Pitcher - Rare Beauty - Base Cracked - 3 or 4 Known
- _____ 124. **M - Floral and Grape Ribbon Edge Top Pitcher - Super Top to Bottom**
- _____ 125. W - **N** Raspberry Milk Pitcher - Beautiful, Super Rare - Base Cracked
- _____ 126. **B - Orange Tree Variant Tankard Pitcher - Rare Beauty**
- _____ 127. B - Orange Tree Variant Tumbler
- _____ 128. P - Dugan 10 Ruffle Flowers and Frames Bowl - Multi Elec.
- _____ 129. **P - 8 Ruffle **N** Peacocks Bowl, Rib Ext. - Super Pink, Purple & Blue Irid.**
- _____ 130. **Elec. B - 8 Ruffle **N** Peacocks Bowl, Rib Ext. - Manf. Tool Marks on Edge - Still Super**
- _____ 131. **W - 10" Rd. FTD. Gold Trim Orange Tree Master Bowl - Frosty - Super Irid. & Rare**
- _____ 132. Amber - 11 1/4" Imp. Beaded Bullseye Vase - Rare Color - Great Irid.
- _____ 133. Pumpkin M - Stipped Grape and Cable Bon Bon - Rare Beauty
- _____ 134. B - Ruffle Dragon and Lotus Collar Base Bowl - Gorgeous Bowl
- _____ 135. **Cobalt Blue Base - **N** Rose Show Plate - Elec. Irid. of All Irid. - #10 Even Multi Irid.**
- _____ 136. **G - Mlbg. Radium 3 in 1 Trout and Fly Bowl - Super Radium**
- _____ 137. G - Birds and Cherries, 2 Sides Up, Bon Bon
- _____ 138. Dark M - Daisy & Drape FTD. Rose Bowl - Blackberry Int. Outstanding - Perfect Feet
- _____ 139. **Pumpkin - Persian Medallion Int. Grape and Cable Lg. Fruit Bowl - Fabulous**
- _____ 140. **G - 17" Mlbg. Hobnail VT. Mid Size Vase - Scarce Color - Very Nice**
- _____ 141. M - 16" Mlbg. Hobnail VT. Vase - Dark and Nice Mid Size
- _____ 142. A - 16" Mlbg. Hobnail VT. Vase - Mid Size - Multi Irid.
- _____ 143. A - 9" Grape and Cable B.W. Plate - All Time Favorite
- _____ 144. **P - Sq. 8 Ruffle Butterfly and Tulip Bowl - Super All Over Electric Irid. - The Best**
- _____ 145. M - Vas.? Square Butterfly and Tulip Bowl - Glows under Black Lite
- _____ 146. G - **N** Wishbone FTD. Plate - Rare Color - Bruise on Back - Don't Show in Front
- _____ 147. P - Scroll Embossed Imp. Plate - Multi Elec.
- _____ 148. P.M. - Stippled, Ruffled, Rib Bk. Good Luck Bowl - Super Blues, Golds & Pinks
- _____ 149. **P - Imperial Grape 7 Pc. Water Set - Super Multi Elec Set**
- _____ 150. **G - Poinsettia Milk Pitcher - Very Scarce Color - Dark**
- _____ 151. **G - P.C.E. Grape and Cable B.W. Bowl - Very Scarce Color & Shape**
- _____ 152. **G - Ruffle **N** Nippon Bowl - B.W. Ext. - Scarce Beauty**
- _____ 153. B - Round Master Fantail FTD. Bowl - Scarce Pattern - Blackberry Ext.
- _____ 154. A - Spat. FTD. 8" **Low** I.C.S. Stag and Holly Bowl - Super Color & Shape
- _____ 155. P - **N** 9" Plain Bk. Grape and Cable VT. Plate - Very Flat & Pretty
- _____ 156. **P.O. - Collar Base - 3 in 1 Dragon & Lotus Bowl - Rare - Super Irid. All Over**
- _____ 157. M - Mlbg. 6 Ruffle 10" Rosalind Bowl - Super Satin Beauty
- _____ 158. **Red - 8 3/4" Fenton Fine Rib Vase - Excellent Easy to See Red**
- _____ 159. G - 8 3/4" Tight C.R.E. Ten Mums Bowl - Super Irid - No Wear - Tops
- _____ 160. **Ultra Rare Lav. A - 6 1/2" Mlbg. Flat Peacocks Plate - And Its Pretty**
- _____ 161. M - Imp. 9" Open Rose Stippled Plate - Pinks & Golds
- _____ 162. P - Imp. Windmill 8" Ruffle Bowl - Super - Imperials Hot
- _____ 163. P - Imp. Grape 9" Ruffled Bowl - Super Multi Elec.
- _____ 164. **Lav. A - 6" 6 Ruffles Sail Boats Sauce - Rare Color**
- _____ 165. **B - 9 3/4" Little Fishes FTD. Ruffle Bowl - Great Item**
- _____ 166. M - I.C.S. Coral Bowl - Scarce in Any Shape or Color
- _____ 167. A - Dugan Double Stem Roses Bowl w/10 Ruffles
- _____ 168. Red - 8 1/4" Stretch Colonial Panels Plate - Gorgeous
- _____ 169. P - Collar Base 6 Ruffle 9 1/2" Dugan Cherries Bowl - Rare Shape
- _____ 170. **B - **N** Rose Show Plate - Multi Elec. Blues Etc.**
- _____ 171. M - 6" Scales Plate - Very Pretty Example
- _____ 172. B - 12" Plume Panels Vase
- _____ 173. **Emerald G - Imperial Grape Wines - Super - 2 x \$ - Rare Color**
- _____ 174. B - P.C.E. Rib Bk. Good Luck Bowl - Multi Elec. - Always in Demand
- _____ 175. **Blue - Butterfly and Berry Fernery from Master Berry Bowl - Only a Couple Known - Very Rare**
- _____ 176. M - 10" **N** Wishbone Collar Base Bowl - Satin Blues, Pinks & Greens
- _____ 177. M - 7" Bullseye and Beads Vase - 5" Top
- _____ 178. Smoke - Radium 11" Parlor Panels Vase - Blues and Pinks - Wow!
- _____ 179. P - 8 1/4" Super Ripple Vase - 5 3/4" Top - 3 1/4" Base - Multi Elec.
- _____ 180. **P - Wishbone and Spades Chop Plate - Super Color and Quite Scarce**
- _____ 181. P - Wishbone and Spades 6 1/2" Plate - Great Little Rarity - Smooth Bk.
- _____ 182. P.O. - 10" Ruffle Single Flower Bowl - Scarce Shape
- _____ 183. B - Low 3 in 1 Ruffle Ribbon Tie Bowl or Plate
- _____ 184. W - I.C.S. Leaf Chain Bowl - Super Blue & Pink Irid.

- _____ 185. **M - Good Luck Stippled Plate - Rib Bk. - Only a Few Known w/ Stippling - Rare**
- _____ 186. P - N Three Fruits B.W. Plate - Multi Satin - No Scratches
- _____ 187. M - Ruffle Rib Bk. N Peacocks Bowl - Dark w/Pink, Blues & Gold
- _____ 188. P - N Singing Birds Mug
- _____ 189. B - Flat Fenton Holly Plate - Radium Golds & Pink Hi-lites
- _____ 190. **Rare Ice Blue - 3 Fruits Medallion FTD. Bowl - Low Ruffle - Fantastic Pink & Blues**
- _____ 191. Ice Blue - N Ruffle Rib Bk. Embroidered Mums Bowl - Great Base Color
- _____ 192. P - N 9" Grape and Cable Plate - B.W. Ext. Stipple All Over - Blue Irid.
- _____ 193. P - 6 Pc. Imp. Diamond Lace Stunning Elec. Water Set
- _____ 194. **M - 9 1/4" Flat Captive Rose Plate - I'll Give a 10 till I See One Better**
- _____ 195. **G - Mlbg. Mystery Peacock 6 Ruffle Bowl - Super Radium**
- _____ 196. **A - Mlbg. Mystery Peacock 6 Ruffle Bowl - Super Radium**
- _____ 197. A - Mlbg. Large I.C.S. Peacock and Urn Bowl - Satin 10"
- _____ 198. A - Mlbg. 9 1/2" Deep I.C.S. Peacock and Urn Bowl - Satin - Neat Shape
- _____ 199. A - Mlbg. 9 1/2" Flared Round Peacocks Bowl - Radium & Nice
- _____ 200. **G - Mlbg. Leaf and Little Flowers Rd. Small Compote - Rare Satin & Green**
- _____ 201. G - Mlbg. Holly Sprig Deep Don Bon - Radium
- _____ 202. **G - Mlbg. Holly Sprig Spade Shape Nappy - Radium**
- _____ 203. M - Mlbg. Holly Sprig Card Tray Bon Bon - Radium
- _____ 204. G - Mlbg. 6 Ruffle Holly Whirl Radium Bowl
- _____ 205. **M - Mlbg. Hobnail Swirl Rose Bowl - Scarce Anytime**
- _____ 206. P - Imperial Grape Carafe - Multi Irid.
- _____ 207. P - Grape Delite Rose Bowl - Radium Blues and Purples - Good Feet
- _____ 208. B - 16 1/2" Spearhead and Rib Vase Swung
- _____ 209. G - large Grape and Cable Berry Bowl - Beautiful Example
- _____ 210. **Pastel Aqua Opal - Rib Back 3 Fruits Plate - Blues, Pinks, Greens & Golds - No Scratches**
- _____ 211. **M - Daisy Cut Bell - Rare and Super Radium Pinks and Blues**
- _____ 212. G - 9 1/2" Fenton Holly Plate - Flat w/Even Blue & Pink Irid - No Wear
- _____ 213. M - 9" N Grape and Cable VT. Smooth Bk. Plate - Pretty & Scarce
- _____ 214. B - 9 1/4" Heart and Vine Plate - Satin Golds, Silver & Pink Center
- _____ 215. **Red - Holly Fenton Ruffle Bowl - Dark Multi Irid.**
- _____ 216. M - Aqua Base 10 Ruffle Double Stem Roses Bowl - Most Unusual Color
- _____ 217. M - 15 1/4" Mid Size Ripple Imp. Vase - 3/8" Base - Dark Beauty
- _____ 218. B - 12 3/4" April Showers Vase
- _____ 219. I.G. - 7 3/4" N Drapery Vase - Pretty Pinks and Blues
- _____ 220. **B - 12 3/4" N Mid Size Tree Trunk Vase - Multi Elec.**
- _____ 221. **M - 12 3/4" N Mid Size Tree Trunk Vase - Deep Marigold**
- _____ 222. **P - 10 1/2" 6 Ruffle Ski Star Bowl - Fantastic Elec. Blue Irid.**
- _____ 223. **B - N Rose Show Bowl Ruffled - Super Multi Elec. Blues Etc.**
- _____ 224. **Dark Ice Blue N Ruffled Rose Show Bowl**
- _____ 224. (A) - **Blue Ruffle N Poppy Show Bowl - Elec. Multi Irid**
- _____ 224. (B) - **Amy. Mlbg. Radium Zig Zag Ruffle Bowl**
- _____ 225. **Memphis Whiskey Crystal Decanter - Not Irid. - Very Rare**
- _____ 226. A - Mlbg. 7 3/4" Ruffle Little Stars - Beautiful Multi Satin
- _____ 227. M - Inverted Strawberry Power w/Lid - Normal Lid Nick - Great Match
- _____ 228. P.O. - Spat. FTD. Ruffle Peacock and Grape Bowl - Very Scarce
- _____ 229. Super Lav. A - 3 in 1 Crimp Dugan Double Stem Roses Bowl
- _____ 230. **M - Rare 9" Fenton Coral Plate - Few Ever Offered - Best I've Seen**
- _____ 231. **Lav. Opal - Collar Base Dragon and Lotus Bowl - Super Rarity**
- _____ 232. **Amber - Collar Base Dragon and Lotus Bowl - Scarce Base Color**
- _____ 233. **Emerald Green - N Ruffle Smooth Back Strawberry Bowl - Super**
- _____ 234. **G - 7 1/4" N Stippled Fruits and Flower VT. Ruffle Bowl - Few Known**
- _____ 235. **M - 10 1/4" Imp. Hattie Chop Plate - Great Pinks and Blues**
- _____ 236. A - Ruffle Fenton Peacock and Urn Bowl - Very Scarce Base Color
- _____ 237. P - N Ruffle Rose Show Bowl - Super Elec. Irid. - Nick on Edge
- _____ 238. **P.M. - Flat 12" FTD. Rare Two Flowers Chop Plate - Soft Satin Beauty**
- _____ 239. P - N 7 1/2" Grape and Cable Leaf Center Plate - B.W. Ext. - Super
- _____ 240. **Red - Lustre Rose Ruffled Fruit Bowl - A Major Item for A Red Collector**
- _____ 241. B.A. - 9 1/4" Lined Lattice Vase - Scarce and Nice
- _____ 242. P - 8 1/4" Lined Lattice Vase - Great Multi Elec.
- _____ 243. M - N Plain Base Corn Vase - A Nice One
- _____ 244. P - P.C.E. Collar Base 3 Fruits Smooth Back Bowl - Super - The Best
- _____ 245. **Teal - Swan Salt - Super Find - Possible 1 of a Kind**



- _____ 246. **G - Sunflower Mlbg. Pin Tray - A Beauty - Perfect**
- _____ 247. P - Whimsey-S-Repeat Pitcher from Punch Cup - Super Rare
- _____ 248. Dark I.B. - Fancy Int. Fine Cut and Roses Rose Bowl - Good Feet - A Dandy
- _____ 249. A - Cherry Circles Lg. Bon Bon - A Very Rare Color
- _____ 250. **P - 11" Garden Path VT. Chop Plate - Extremely Rare Beauty - Super**
- _____ 251. **M - IL. Soldiers and Sailors Plate - 2 Surface Dings that blend w/back Berries - Rare and Beautiful - Great Item**
- _____ 252. P - N Grape and Cable Hat Pin Holder - Mint - Elec. B and P Hilites
- _____ 253. M - N Grape and Cable Hat Pin Holder - Mint - Rich Color
- _____ 254. M - Master Butterfly and Berry Bowl - Gorgeous Pinks, Golds & Blues
- _____ 255. **E.B. - Good Luck Ruffle Bowl - Super Satin - The Absolute Best**
- _____ 256. **P.M. - Good Luck Ruffle Bowl - Super Satin Pinks, Blues and Golds**
- _____ 257. **P.M. - N Peacocks Bowl - Pastel Irid. Soft Golds, Blues and Pinks - Wow!**
- _____ 258. A.O. - Leaf and Beads Rose Bowl - Great Pink and Blue Hilites
- _____ 259. P - Grape and Cable N 5 pc. Round Berry Set - Old Favorite
- _____ 260. **M - N Rose Show Flat Plate - A Great Scarce Plate**
- _____ 261. Celeste or Saph. - Florentine Candle Sticks - Very Desirable
- _____ 262. G - 8" I.C.S. Mayan Bowl - Pretty Soft Satin
- _____ 263. W - Constellation Compote - Frosty Pinks and Purples
- _____ 264. **A - Stag & Holly Lg. I.C.S. Bowl - Very Rare Shape & Color**
- _____ 265. **P - Persian Garden 6 pc. Berry Set - Also Very Rare**
- _____ 266. M - 6 Ruffle Concord Bowl - Hot Pattern - Pretty Bowl
- _____ 267. M - Dark Round Panther FTD. Sa. Bowl - Dark & Nice
- _____ 268. **W - Palm Beach Rare Butter Dish - Bl. and Pink Irid on a Rare Dish**
- _____ 269. Custard - Green - Lions 7½" Plate - Not Irid. Though Very Rare
- _____ 270. **M - On Custard 8" Prayer Rug Plate - Never Seen One Before**
- _____ 271. M - Australian 10" 8 Ruffle Magpie Bowl - Dark Beautiful Radium
- _____ 272. G - N Acorn Burrs Tumbler - Great Multi Pink, Green and Golds
- _____ 273. **B - Rare Lily of the Valley Tumbler - Very Tough to Find**
- _____ 274. Red - Persian Medallion Bon Bon
- _____ 275. **P - Ruffle Rib Bk. N Hearts and Flowers Bowl - Scarce & Pretty**
- _____ 276. M - 6 Ruffle Pony Bowl - Satin Dark - Old Favorite
- _____ 277. A - 2 Row Open Edge Blackberry Ruffle Basket - Pretty and Rare Color
- _____ 278. G - Leaf and Beads Stipple Ray Int. Nut Bowl - Super One
- _____ 279. M - Imp. Grape Decanter & Stopper - Very Pretty
- _____ 280. **M - Stork and Rushes 7 pc. Water Set - Rare - Few Known**
- _____ 281. **M - Flat 9¾" Fenton Holly Plate - Super Multi Pink, Gold & Blues**
- _____ 282. Pastel P.O. - 3 in 1 Dragon and Lotus Bowl - Rare w/Satin Irid.
- _____ 283. P.M. - 9¾" I.C.S. Mlbg. Fleur De Lis Bowl - Collar Base - Rare
- _____ 284. **P Amaryllis 3 Corner Flat Plate or Compote - Rare Beauty**
- _____ 285. **G - Hearts and Flowers Compote - Great Rare Beauty**
- _____ 286. G - 9" Ripple Imp. Vase
- _____ 287. W - Dugan 9" Dome Base Plate - Super Blues & Pinks
- _____ 288. B - 9" 3 in 1 Ribbon Tie Bowl - Super Blues, Purple & Pinks
- _____ 289. **G - Rare Smooth Handle N Rd. Bushel Basket - Few Known**
- _____ 290. **P - Large FTD. Square Butterfly and Tulip Bowl - Scarce Beautiful Pattern - Collector's Delight!**
- _____ 291. M - P.C.E. Hearts and Flowers Bowl - Dark and Rare P.C. Edge
- _____ 292. M - I.C.S. Collar Base Dragon and Strawberry Pattern - Hot Pattern
- _____ 293. P - 10¾" Four Flowers Chop Plate - Extra Rare - Few Known
- _____ 294. **P - N Peacock at Fountain Fruit Bowl - A Real Beautiful Item**
- _____ 295. **P - N Peacock at Fountain 2 pc. Punch Bowl Set - Great Pattern**
- _____ 296. M - Mlbg. Peacock Tail VT. Compote - Light Satin
- _____ 297. G - 6" Mlbg. Cosmos Sauce - Ruffled Radium - Very Rare Shape
- _____ 298. Honey Amber - 12" 6 Ruffle Imp. Fashion Fruit Bowl - Super Rare
- _____ 299. **W - Large Persian Medallion Compote - Blues, Pinks, Frosty & Rare Color**
- _____ 300. **B - Giant Stag and Holly Rosebowl - Beauty - Extremely Rare - 3 Known**
- _____ 301. M - 10" Fenton Fine Rib - Very Nice
- _____ 302. 10" Fenton Fine Rib - A Beaut
- _____ 303. Custard Nutmeg - N Drapery Vase 9" - Rare - Not Irid.
- _____ 304. **Yellow - 10" Corinth Vase - Rare Color**
- _____ 305. Teal - 9" Corinth Vase - Radium Beauty
- _____ 306. **G - 8" Imp. Beaded Bulls Eye Vase - 6½" Top - Great Find**

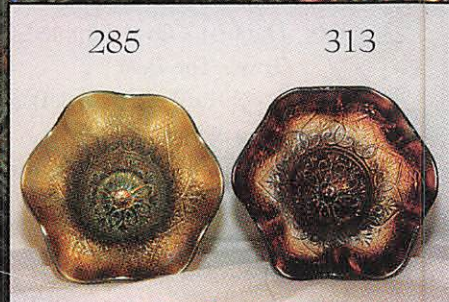
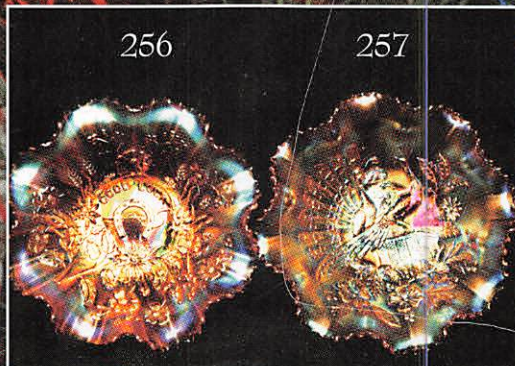
- _____ 307. M - 7" Imp. Beaded Bulls Eye Vase - 6" Top
- _____ 308. M - 17½" Morning Glory Funeral Vase - 8½" Top - WOW!
- _____ 309. P - 16¼" Morning Glory Vase - 8" Top - Beauty w/Star Base
- _____ 310. M - 10½" Imp. Free Fold Vase - Radium Beauty
- _____ 311. P - N 8½" Diamond Point Vase - 4¾" Top - Always in Demand
- _____ 312. M - 8" Imp. J.I.P. Morning Glory Swirl - Neat Vase
- _____ 313. B - N Hearts and Flowers Compote - Great Item
- _____ 314. Smoke - Imp. Rare Lg. Diamond Ring Rosebowl - 1st to Surface
- _____ 315. P.M. - Large Imp. Poppy Show Vase - Pastel Blues, Pinks & Golds
- _____ 316. Dark M - Oval Stippled Grape and Cable Dresser Tray - The Best
- _____ 317. P - N Ruffle Rib Back Peacocks Bowl - Multi Elec. Blue & Purples
- _____ 318. Saph. - 8¼" I.C.S. Fenton Orange Tree Bowl - 1 of a Kind?
- _____ 319. Moonstone - 8" I.C.S. Orange Tree Bowl - A Beautiful Rarity
- _____ 320. Power Blue - Base 8¼" I.C.S. Orange Tree Bowl - Horehound Top
- _____ 321. Persian Blue 7¾" I.C.S. Lotus and Grape Bowl - Few Known
- _____ 322. I. G. - Fine Cut and Roses Fancy Int. Candy Dish
- _____ 323. B - N Stippled, Rib Bk. 3 Fruits Plate - Elec. Bl. w/Purple Hi-lite
- _____ 324. I.G. - N Grape and Cable Banana Bowl - Dk. Beautiful Rarity
- _____ 325. Dark I.B. - N Rib Bk. Peacocks Plate - Blue, Purple - Very Scarce Dark Base Color
- _____ 326. B - N Rib Bk. Stippled Peacocks Plate - Multi - A Dandy Item
- _____ 327. P.M. - P.C.E. N Stippled Strawberry Bowl - Blues, Pinks & Golds - Rare
- _____ 328. Moonstone Slag - Ruffled Fenton Holly Bowl - Rare and Pretty
- _____ 329. Teal - Lotus and Grape Bon Bon - Great Irid on a Rare Base Color
- _____ 330. W - N Fine Cut and Roses Fancy Int. Candy Dish - Beauty - Toe Roughness
- _____ 331. W - N 8 Sided Bushel Basket - Frosty Pinks and Greens
- _____ 332. G - Rare N 8 Sided Bushel Basket - Great Find
- _____ 333. W - N FTD. Wishbone Ruffled Bowl - Frosty Bl., Pink & Golds
- _____ 334. M - Ultra Rare 474 Water Pitcher and 6 Goblets
- _____ 335. M - 8¼" Rising Sun Juice Pitcher - Dark Radium Rarity
- _____ 336. P - N Butterfly Bon Bon - Threaded Back
- _____ 337. M - N Ruffled FTD. Wishbone Bowl - Pretty One
- _____ 338. Clear - Shriners 1911 Champaign - Pittsburgh
- _____ 339. M - Flashed 7" Enamel Decor. Stein - Pewter Top - A Rarity
- _____ 340. M - N Ruffled Poinsettia and Lattice Bowl - Beautiful Example
- _____ 341. Clear - Radium Irid. Open Opals Compote - Very Rare - Chip Bottom Base
- _____ 342. P - Octagon Salt Shaker - One Only - Rare
- _____ 343. M - 5 Grape Arbor Tumblers - 5 x \$
- _____ 344. M - 2 Enamel Flower Tumblers w/Int. Panels - 2 x \$
- _____ 345. Smoke - Grape and Cable Punch Bowl - Extremely Rare - 1 of 2 Known - 1 Missing Flute
- _____ 346. M - I.C.S. 8" Peacock Tail Bowl - Rare Shape - Near Pumpkin
- _____ 347. EB - Vintage Fernery Bowl - Super Elec. - Must See to Believe
- _____ 348. G - N Grape and Cable Master Punch Base - Where are they when needed?
- _____ 349. G - Near Em. Grape and Cable Sm. Punch Base
- _____ 350. A - Hobnail Swirl 9½" Vase - Rare Mlb. Pc. - Base Chip - A Beauty
- _____ 351. Teal - Contemporary 1989 H.O.C.C.A. Bell - Thomas Dugan
- _____ 352. 6 Woman's Day Carnival Glass Issues - August 1965 - Choice

**APPROXIMATELY 100
UNNUMBERED PIECES
SOLD AT END OF AUCTION**

THANK YOU
WE APPRECIATE YOUR BUSINESS!
BOTH BUYER AND SELLER

EARLY BIRL 1998 CARNIVAL CALENDAR
CARNIVAL GLASS CENTER
BOONVILLE, MO
FEBRUARY 21, 1998
MARCH 21, 1998
APRIL 11, 1998
MAY 9, 1998

Respectfully
Mickey Reichel



WARMEST
HOLIDAY WISHES
FROM

**MICKEY
REICHEL**
AUCTION
COMPANY



DIRECT MAIL TO:
516 THIRD STREET
BOONVILLE, MO
65233

FIRST CLASS MAIL



SPECIAL INVITATION TO:

