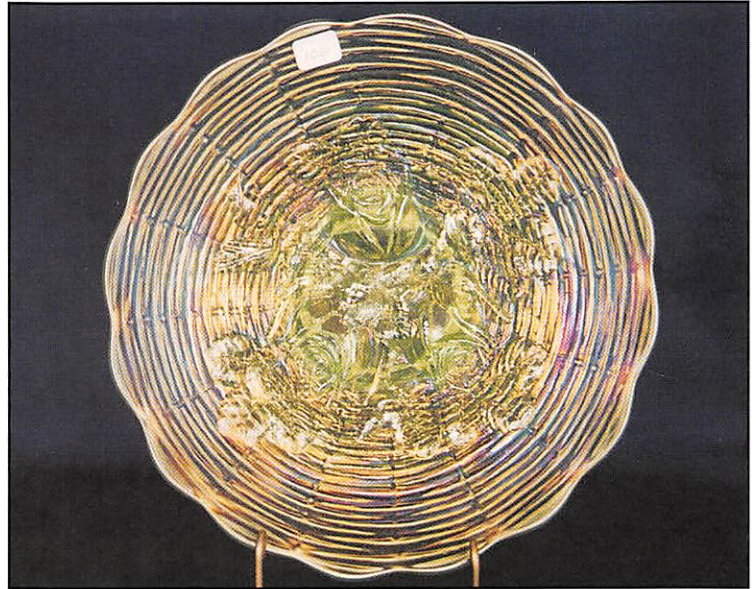
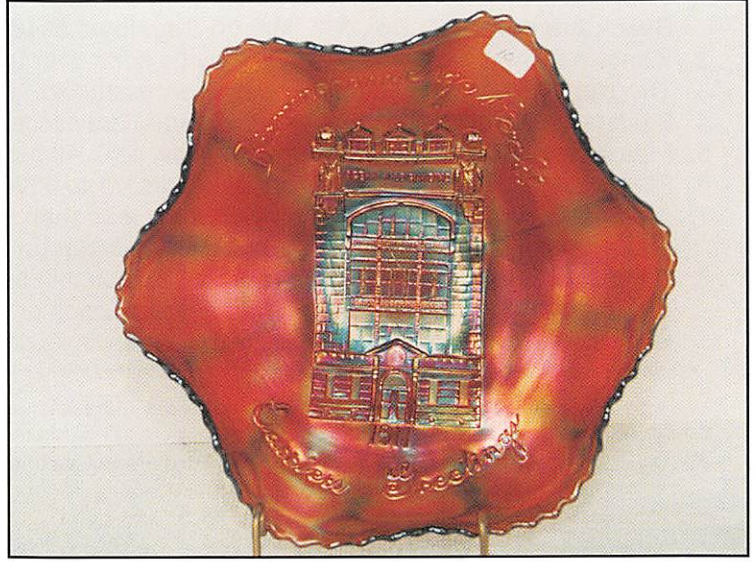
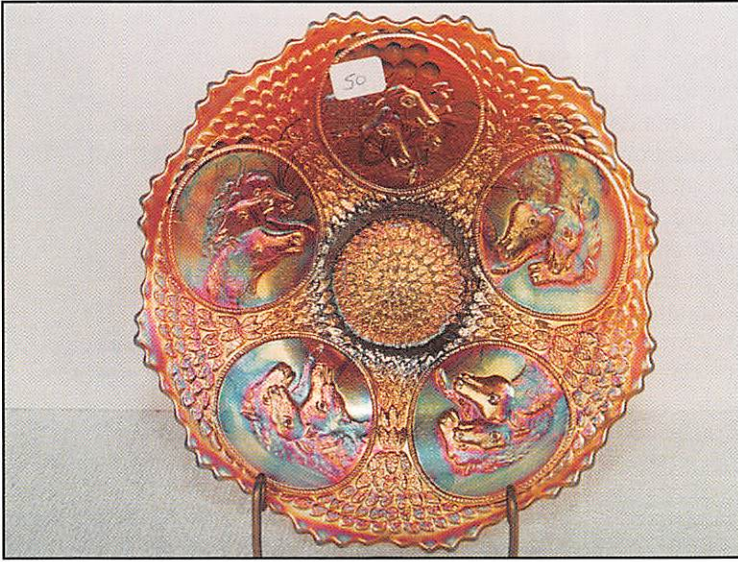


OUTSTANDING CARNIVAL GLASS

AUCTION

Saturday, November 8, 1997 – 9:30 A.M.



*Holiday Inn - Wentzville • 900 Corporate Parkway
Wentzville, MO*

(Exit 212a off of I-70) • Call (314) 327-7001 for reservations

JIM and JAN SEECK

Seeck Auctions

515-424-1116

SATURDAY, NOVEMBER 8th, 1997 -- 9:30 A.M.

Holiday Inn -- Wentzville, MO

Seek Auctions is pleased to be selling the Michael and Lucy Hood collection of Carnival Glass from Kansas City, Missouri. They have put together a nice selection of glass over the years and it will make for a great auction to end up the year. Remember, Christmas is coming and there is nothing better to give as a gift. Hope to see you there!

PREVIEW: Friday, November 7th, 3:00 P.M. **NO BUYER'S PREMIUM.**

RESERVATIONS: Call (314) 327-7001 (Please ask for the Seek Auction block of rooms)

WRITE-IN BID POLICY

1. Write-in bids will be accepted by sending the numbers of the item(s) desired and the amount bid on each to:
Seek Auctions, PO Box 377, Mason City, Iowa 50402.
2. If known by Auction Company, bids may be done over the telephone. (515)424-1116.
3. There is a \$5 handling charge for each successful bid. Shipping and insurance charges are additional.
4. Bidders will be notified by phone if their bid(s) are successful. This call will be made 1 - 3 days after the auction.
5. Please have all bids in by Wednesday, Nov. 5th. All bids (by mail or phone) after this date may not be carried out.
6. Please place bids in the following increments: \$1 to \$300 - \$5 increments \$300 up - \$25 increments.
7. **If you do not receive an item that sold for less than your bid, assume we cancelled your bid because the piece of glass had below average color, manufacture problem, damage or was not listed correctly.**
8. To receive price lists send: \$20 -- for this auction and next 7 auctions
\$5 -- for only this auction or individual auction (please specify)

Send to the above address. (please allow 2 - 3 weeks delivery for price lists)(Make checks payable to: Jan Seek)

You may now email us with your write-in bids! Our email address is: seekauction@willowtree.com

Continue to include the numbers of the item(s) you would like to bid on and amount bid on each, please include your telephone number.

ALSO visit us at our website: <http://www.willowtree.com/~seekauction>

- | | |
|--|--|
| ___ 1. Stippled Petals dome ftd ruffled bowl - peach opal | ___ 18. 1909 Louisville KY. Shriners champagne - clear |
| ___ 2. Spirilex 10" vase - marigold | ___ 19. 1910 New Orleans Shriners champagne - clear |
| ___ 3. Paneled Diamond & Bows 6" vase - blue | ___ 20. 1910 Detroit Elk's ruffled bowl - amethyst - super pretty, rare |
| ___ 4. Octagon water goblet - marigold | ___ 21. Miniature Blackberry compote - marigold - scarce |
| ___ 5. Persian Medallion small size ruffled compote - blue - scarce | ___ 22. Miniature Blackberry compote - blue |
| ___ 6. Stippled Rays IC shaped sauce - teal - lacks irid. | ___ 23. Banded & Stippled Grape & Cable ftd fruit bowl - blue - very nice, very scarce |
| ___ 7. Star & File ftd vase - marigold | ___ 24. Grapevine Lattice ruffled bowl - white |
| ___ 8. Daisy hdd basket - smoke | ___ 25. Rose Show ruffled bowl - lime green opal - super pretty & extremely rare, a great piece |
| ___ 9. Rustic 9" vase - blue | ___ 26. Rose Show ruffled bowl - green - super rare & pretty, a hard color to find nice |
| ___ 10. Birmingham Age Herald ruffled bowl - amethyst - very rare & desirable, super, WOW! | ___ 27. Rose Show ruffled bowl - marigold - spectacular, as pretty as they get, has small spots of epoxy on edge |
| ___ 11. Long Thumbprint 7" vase - green | ___ 28. Heart & Vine 3 in 1 edge bowl - amethyst |
| ___ 12. Thistle banana boat ftd bowl - blue - pretty | ___ 29. Leaf Rays nappy - white |
| ___ 13. Thistle banana boat ftd bowl - marigold | ___ 30. Peacock & Grape spt ftd ruffled bowl - red - very rare & desirable, nice |
| ___ 14. M'burg Boutonniere compote - marigold | ___ 31. Peacock & Grape spt ftd ruffled bowl - lime green - has marigold overlay, nice |
| ___ 15. Australian Thunderbird large ruffled bowl - amethyst - very scarce & desirable | ___ 32. Target 11" vase - amethyst |
| ___ 16. Little Flowers 10" 3 in 1 edge bowl - amethyst | |
| ___ 17. 1911 Rochester N.Y. Shriners champagne - clear | |

- ___ 33. Fenton's Flute 7" vase - green - very scarce, has a heat check in base
- ___ 34. Question Mark round compote - white - very nice
- ___ 35. **Apple Tree water pitcher - white - super pretty, scarce**
- ___ 36. Apple Tree tumbler - white
- ___ 37. M'burg Little Stars 7" ruffled bowl - amethyst - scarce
- ___ 38. Acorn IC shaped bowl - aqua - nice
- ___ 39. Leaf Chain IC shaped bowl - pastel blue - nice
- ___ 40. **Banded Grape & Cable hatpin holder - purple - super pretty, scarce**
- ___ 41. N's Butterfly bon bon - amethyst
- ___ 42. **Wine & Roses water pitcher - marigold - very scarce & desirable**
- ___ 43. Wine & Roses goblets(2) - marigold - choice
- ___ 44. M'burg Rays & Ribbons ruffled bowl - amethyst - radium
- ___ 45. **Tornado small size vase - purple - very scarce, pretty**
- ___ 46. Holly ruffled compote - pastel blue - has marigold overlay
- ___ 47. Holly ruffled compote - amethyst - very scarce color
- ___ 48. **Paneled Dandelion tankard water pitcher - green - very scarce & desirable**
- ___ 49. Paneled Dandelion tumbler - green
- ___ 50. **Horse Medallion 7" plate - pastel blue - has amethyst irid., super rare & pretty**
- ___ 51. **Horse Medallion 7" plate - marigold - very nice**
- ___ 52. Raindrops 3 in 1 edge dome ftd bowl - peach opal
- ___ 53. Persian Medallion CRE ruffled compote - green - pretty & scarce
- ___ 54. Ripple 7" vase - marigold
- ___ 55. **Apple Blossom Twigs ruffled bowl w/smooth edge - peach opal - pretty & scarce**
- ___ 56. Apple Blossom Twigs ruffled bowl - purple - pretty, has chip on point
- ___ 57. Rosette deep ftd ruffled bowl - amethyst
- ___ 58. Stippled Rays 10" ruffled bowl w/scale band back - white - scarce
- ___ 59. Flute table set - marigold - creamer has base chip
- ___ 60. **Grape & Cable 7 pc. water set - purple - highly desirable set, nice**
- ___ 61. Knotted Beads 12" vase - green - pretty irid.
- ___ 62. Knotted Beads 9" vase - marigold
- ___ 63. **Panther ftd round sauce - green - rare color for this piece**
- ___ 64. Sailboats ruffled sauce - green - pretty
- ___ 65. **Isaac Benesch & Sons ruffled adv. bowl - amethyst - always desirable & nice**
- ___ 66. Holly 2 sides up hat - lime green
- ___ 67. Stag & Holly spt ftd IC shaped bowl - amethyst
- ___ 68. **Victorian large ruffled bowl - purple - super pretty lavender type irid.**
- ___ 69. Mikado ruffled compote - marigold
- ___ 70. **Stippled Grape & Cable ruffled bowl w/ribbed back - green - very pretty & nice**
- ___ 71. **Stippled Grape & Cable ruffled bowl w/ribbed back - blue - pretty & nice**
- ___ 72. Puzzle hldd bon bon - blue
- ___ 73. Grape & Cable cvd sweatmeat - purple - nice example
- ___ 74. Mary Ann vase - marigold
- ___ 75. **Holly ruffled bowl - peach opal - extremely rare color, only a handful known**
- ___ 76. Holly ruffled bowl - amber - super pretty, as nice as they get
- ___ 77. Crab Claw tumbler - marigold
- ___ 78. Grapevine Lattice tumbler - amethyst
- ___ 79. Grapevine Lattice 7" plate - marigold
- ___ 80. **Trout & Fly IC shaped bowl - green - satin & super, scarce**
- ___ 81. **Basketweave Open Edge ruffled basket - red - desirable**
- ___ 82. Basketweave Open Edge ruffled basket - lime green - neat
- ___ 83. Basketweave Open Edge ruffled basket - aqua - scarce color
- ___ 84. Basketweave Open Edge ruffled basket - white - scarce
- ___ 85. **Embroidered Mums ruffled bowl - purple - very scarce & nice**
- ___ 86. Butterflies bon bon - blue
- ___ 87. Ripple 11" vase - purple - pretty
- ___ 88. Grape & Cable banana boat - purple - pretty
- ___ 89. Persian Medallion hair receiver - blue - scarce
- ___ 90. **Brooklyn Bridge ruffled bowl - marigold - very pretty example**
- ___ 91. Fluffy Peacock tumbler - purple
- ___ 92. Grape & Gothic Arches 4 pc. table set - marigold - nice matching set, dark
- ___ 93. Butterfly & Berry 9 1/2" vase - green - scarce, pretty
- ___ 94. Butterfly & Berry 9 1/2" vase - blue
- ___ 95. **Enameled Columbine Zig Zag water**

- pitcher - blue - scarce**
- ___ 96. Enameled Forget-me-not tumblers (2) - blue - choice
- ___ 97. Fine Cut & Roses rosebowl - purple
- ___ 98. Fine Cut & Roses Variant rosebowl - amethyst - has no collar base
- ___ 99. Peacock & Grape 9" spt ftd plate - marigold
- ___ **100. Rose Show 9" plate - ice green - super, super, extremely rare**
- ___ **101. Rose Show 9" plate - blue - electric & nice, a dandy**
- ___ 102. Star Medallion milk pitcher - smoke
- ___ 103. Chrysanthemum large IC shaped ftd bowl - blue - super, super as pretty as they get, very flat
- ___ **104. Australian Kingfisher large ruffled - purple - pretty**
- ___ 105. Australian Kingfisher ruffled sauce - purple
- ___ 106. Top of the Morning hatpin - dark
- ___ 107. Tufted Throw pillow hatpin - dark
- ___ 108. Butterflies hatpin - dark
- ___ 109. Moire Beetle hatpin - dark
- ___ 110. Triad hatpin - dark
- ___ **111. Constellation ruffled compote - lavender - super!**
- ___ 112. Enameled Dotted Diamonds & Daisies 5 pc. water set - marigold
- ___ 113. Orange Tree powder jar - blue
- ___ 114. Orange Tree powder jar - marigold - lid chip
- ___ **115. Dragon & Strawberry IC shaped collar based bowl - marigold - incredible!**
- ___ 116. Imperial Grape wine bottle - purple - very pretty
- ___ 117. N's Thin Rib 10" vase - blue - rare color & nice
- ___ 118. N's Thin Rib 11" vase - purple - pretty
- ___ 119. Grape & Gothic Arches tumbler - blue
- ___ **120. Drapery rosebowl - ice blue - very rare & nice**
- ___ **121. Drapery rosebowl - purple - scarce rosebowl**
- ___ 122. Panther master berry bowl - marigold - dark & super, very pretty
- ___ 123. Fenton's Three Fruits 9" plate - marigold - scarce
- ___ 124. M'burg Holly Sprig 8" crimped edge bowl - amethyst - radium & nice
- ___ **125. Tree Trunk Elephant's foot 13" funeral vase - purple - extremley rare & nice, highly sought after piece**
- ___ 126. Beaded Shell tumbler - amethyst
- ___ 127. Thistle ruffled bowl w/Horlacher adv. - green - very scarce, adv. on base
- ___ **128. Stork & Rushes 7 pc. water set - blue - nice set, scarce**
- ___ 129. Grape Leaves ruffled bowl - purple - nice
- ___ **130. Lattice & Poinsettia ftd ruffled bowl - purple - super pretty irid.!**
- ___ 131. Wreathed Cherry tumbler - purple
- ___ 132. Cosmos & Cane tumbler - marigold
- ___ **133. Floral & Grape 5 pc. water set - blue - super pretty**
- ___ 134. Diamond Points 6 1/2" squatty vase - purple - pretty
- ___ 135. N's Eight Sided bushel basket - purple - super pretty irid.
- ___ 136. N's Eight Sided bushel basket - white - scarce
- ___ **137. Blossomtime ruffled compote - amethyst - very scarce**
- ___ **138. Grape & Cable 4 pc. table set - marigold - nice set**
- ___ 139. Persian Medallion large size CRE bowl - amethyst
- ___ **140. M'burg Trout & Fly 3 in 1 edge bowl - marigold - satin & nice**
- ___ 141. Ribbon Tie 3 in 1 edge bowl - blue - pretty
- ___ 142. Stream of Hearts ruffled compote - marigold
- ___ 143. Drapery 8" vase - marigold - dark & pretty
- ___ 144. Drapery 7" vase - marigold - minor toe repair
- ___ **145. Eat Paradise Sodas 6" adv plate - amethyst - very pretty, scarce**
- ___ 146. French Knots ruffled hatshape - amethyst - pretty
- ___ 147. Lotus & Grape 7" ftd ruffled bowl - amethyst
- ___ 148. M'burg Primrose ruffled bowl - amethyst - satin, nice
- ___ 149. Mirrored Lotus IC shaped bowl - blue
- ___ **150. Wishbone & Spades chop plate - purple - extremely rare & desirable, has stretchy irid., a dandy**
- ___ 151. Wild Blackberry 9" ruffled bowl - marigold
- ___ **152. Orange Tree 9" plate - blue - scarce & desirable**
- ___ 153. Dugan's Cherries 3 in 1 edge ftd bowl - purple - nice
- ___ 154. Australian Swan large ruffled bowl - marigold - nice
- ___ **155. Butterfly & Fern 7 pc. water set - blue - super pretty pitcher, a dandy**
- ___ 156. April Showers 7" squatty vase - marigold
- ___ **157. Stippled Grape & Cable PCE bowl - amethyst - very scarce, seldom seen stippled**
- ___ 158. Dragon & Lotus spt ftd ruffled bowl -

- green - chip on foot
- ___ 159. **Three Fruits dome ftd ruffled bowl - horehound - very scarce, pretty**
- ___ 160. **Stippled Three Fruits collar based ruffled bowl - aqua opal - super, super, super, has small nick on edge**
- ___ 161. Double Stemmed Rose dome ftd round bowl - blue - rare color
- ___ 162. **M'burg Peacock at Urn large ruffled bowl - amethyst - satin, scarce**
- ___ 163. Coin Spot ruffled compote - purple - pretty
- ___ 164. Grape & Cable 7" handgrip plate - green - scarce
- ___ 165. **Stippled Strawberry ruffled bowl - purple - very scarce stippled, pretty**
- ___ 166. Little Fishes large size ftd IC shaped bowl - marigold
- ___ 167. Vintage 9" ruffled bowl - red - very rare & nice, has epoxy on edge
- ___ 168. Flowering Dill JIP CRE hatshape - marigold - nice
- ___ 169. **Australian Emu compote - purple - extremely rare & pretty**
- ___ 170. **M'burg Hobnail Swirl rosebowl - amethyst**
- ___ 171. Grape & Cable cup & saucer - purple - scarce
- ___ 172. **Good Luck ruffled bowl w/ribbed back - blue - electric & nice**
- ___ 173. Good Luck ruffled bowl w/BW back - purple - scarce
- ___ 174. Persian Medallion IC shaped bowl - green - super blue irid
- ___ 175. **M'burg Courthouse IC shaped bowl - amethyst - very rare & desirable, radium**
- ___ 176. Acorn Burrs creamer - marigold
- ___ 177. Fenton's Peacock at Urn ruffled bowl - blue - scarce
- ___ 178. Wishbone 10" ruffled bowl - sapphire - very rare, cracked
- ___ 179. Four Flowers Variant ruffled bowl - purple - pretty
- ___ 180. **Stippled Three Fruits spt ftd ruffled bowl - aqua opal - very rare, nice**
- ___ 181. Stippled Three Fruits ruffled bowl - marigold - nice
- ___ 182. Fantail IC shaped ftd bowl - blue - super
- ___ 183. Leaf Chain ruffled bowl - white - nice
- ___ 184. Vintage CRE bowl - blue
- ___ 185. **Hearts & Flowers ruffled compote - aqua opal - butterscotch & beautiful**
- ___ 186. Hearts & Flowers ruffled compote - marigold - nice
- ___ 187. Ten Mums ruffled bowl - amethyst - nice
- ___ 188. Basketweave Open Edge JIP hat shape - amber - rare color for these
- ___ 189. **Fenton's Grape & Cable IC shaped bowl - red - very pretty**
- ___ 190. Ski Star dome ftd handgrip plate - peach opal - nice piece
- ___ 191. Grape & Cable spt ftd plate - amethyst - very pretty
- ___ 192. Beaded Shell mug - amethyst
- ___ 193. Grape & Cable powder jar - green - very pretty, scarce
- ___ 194. **Flowers & Frames dome ftd ruffled bowl - purple - electric irid.**
- ___ 195. **Kangaroo ruffled bowl - purple - very pretty**
- ___ 196. Kangaroo ruffled sauce - purple - pretty
- ___ 197. Strawberry handgrip plate - purple - scarce
- ___ 198. Big Basketweave 9" vase - purple
- ___ 199. Diamond & Rib 12" vase - amethyst
- ___ 200. **Wreath Cherry 5 pc. water set - white - very rare & nice, has red paint on cherries**
- ___ 201. **Wreath Cherry 4 pc. table set - white - super & rare, has red painted cherries**
- ___ 202. Butterfly & Berry ftd sauce - amethyst
- ___ 203. Blackberry Open Edge ruffled basket - amethyst
- ___ 204. Hearts & Flowers ruffled bowl - white - nice, scarce
- ___ 205. **N's Corn vase - marigold - very rare vase, has a spot of epoxy on one kernel, nice**
- ___ 206. N's Corn vase - green - very nice, scarce
- ___ 207. N's Corn vase - purple - very scarce color & nice for these
- ___ 208. N's Corn vase - white - scarce
- ___ 209. Singing Birds mug - amethyst
- ___ 210. **Rose Show Variant ruffled bowl - reninger blue - very rare & desirable, nice**
- ___ 211. Wishbone ftd ruffled bowl - purple - nice
- ___ 212. Fruits & Flowers bon bon - green - nice
- ___ 213. Fruits & Flowers bon bon - blue - nice
- ___ 214. Grape & Cable handgrip 6" plate - amethyst - nice
- ___ 215. **Stippled Peacock 9" plate - blue - super example & highly desirable**
- ___ 216. Diamond & Rib 9" vase - white - scarce color
- ___ 217. **Stippled Three Fruits 9" plate - marigold - very nice, scarce**
- ___ 218. Circle Scroll tri-cornered hat shape - purple - super

- ___ 219. Orange Tree loving cup - marigold - nice
 ___ 220. **Grape & Cable hatpin holder - green - very scarce & desirable**
 ___ 221. **Grape & Cable hatpin holder - purple - scarce**
 ___ 222. Grape & Cable hatpin holder - marigold - scarce & desirable
 ___ 223. Three Row Basketweave Open Edge IC shaped bowl - white - scarce
 ___ 224. **Acorn Burrs 7pc. water set - purple - very rare set, nice**
 ___ 225. **Stippled Good Luck ruffled bowl w/ribbed back - reninger blue - very rare & desirable, nice**
 ___ 226. **Holly 9" plate - blue - always in demand**
 ___ 227. Grape & Cable 9" plate w/plain back - purple - super
 ___ 228. **Nippon ruffled bowl - green - very scarce, nice**
 ___ 229. Greek Key ruffled bowl - purple - scarce
 ___ 230. **Dahlia water pitcher - white - has gold painted flower, very rare, nice**
 ___ 231. Dahlia tumbler - white - has gold flower
 ___ 232. **Peacock at the Fountain ruffled compote - purple - very scarce item**
 ___ 233. Grape & Cable cracker jar - marigold - very dark & nice
 ___ 234. Lined Lattice 10" vase - white
 ___ 235. **Peacocks ruffled bowl w/ribbed back - aqua opal - a collector's favorite**
 ___ 236. **Peacocks ruffled bowl w/ribbed back - marigold - dark, nice**
 ___ 237. Feather Stitch ruffled bowl - blue - scarce pattern
 ___ 238. **Concord IC shaped bowl - amethyst - very pretty, scarce**
 ___ 239. Round Up 9" plate - blue - very scarce, nice
 ___ 240. **Cherry Chain round bon bon - green - very rare color, pretty**
 ___ 241. Blueberry tumbler - white
 ___ 242. **Persian Medallion chop plate - blue - a very nice example for this piece**
 ___ 243. Captive Rose 3 in 1 edge bowl - amethyst - pretty
 ___ 244. **Dandelion mug - aqua opal - minor nick on base**
 ___ 245. Grape & Cable cologne bottle & stopper - purple - nice
 ___ 246. Maple Leaf 7 pc. water set - purple - scarce
 ___ 247. Orange Tree hatpin holder - blue - super, has normal feet
 ___ 248. Orange Tree hatpin holder - marigold - scarce
 ___ 249. Fanciful ruffled bowl - marigold - nice
 ___ 250. **Beaded Cable rosebowl - ice blue - very rare & desirable**
 ___ 251. **Beaded Cable rosebowl - aqua opal - very scarce, nice**
 ___ 252. Four Flowers 6" plate - peach opal - nice
 ___ 253. Fine Rib 10" vase - aqua - scarce color
 ___ 254. Fine Rib 11" vase - amethyst
 ___ 255. **Utah Liquors hand grip adv. plate - amethyst - very rare, has epoxy on base**
 ___ 256. Grape & Cable 6" plate - purple - pretty
 ___ 257. Daisy & Drape vase - white - nice
 ___ 258. **Oriental Poppy tankard water pitcher - purple - very pretty, scarce**
 ___ 259. Oriental Poppy tumbler - purple
 ___ 260. **Poppy Show ruffled bowl - purple - highly desirable, scarce**
 ___ 260A **Poppy Show ruffled bowl - marigold - also highly desirable & nice**
 ___ 261. Miniature Morning Glory 6" vase - purple - nice
 ___ 262. Miniature Morning Glory 5" vase - marigold
 ___ 263. **Leaf & Beads rosebowl - aqua opal - super butterscotch, pretty**
 ___ 264. Leaf & Beads rosebowl - blue - scarce color, nice
 ___ 265. **Lions 7" plate - marigold - very rare & nice, tough to find**
 ___ 266. Maple Leaf tumbler - blue
 ___ 267. Vintage epergne - blue - scarce, nice
 ___ 268. Horse Medallion rosebowl - marigold - nice, scarce
 ___ 269. Peacock at Urn IC sauce - ice blue - very scarce & desirable
 ___ 270. **N's Bushel Basket - aqua opal - butterscotch**
 ___ 271. **N's Bushel Basket - lavender blue - odd color**
 ___ 272. N's Bushel Basket - blue - pretty
 ___ 273. N's Bushel Basket - marigold - dark & nice
 ___ 274. Kittens square shaped toothpick - marigold - rare shape
 ___ 275. **Hearts & Flowers 9" plate - marigold - very, very pretty, a highly desired plate**
 ___ 276. **Hearts & Flowers 9" plate - purple - very rare plate**
 ___ 277. Three Fruits spt ftd ruffled bowl - purple - super!
 ___ 278. Coral ruffled bowl - marigold
 ___ 279. Luster Rose 4 pc. table set - marigold - creamer has large chip on spout

- ___ 280. **Peacocks 9" plate w/ribbed back - purple - super irid., pretty**
- ___ 281. Birds & Cherries bon bon - blue
- ___ 282. Four Pillers 10" vase - aqua opal - nice
- ___ 283. Four Pillars 10" vase - blue - rare color
- ___ 284. Stippled Rose Wreath bon bon - purple - very rare bon bon
- ___ 285. **Stag & Holly 9" spt ftd plate - marigold - nice example**
- ___ 286. Orange Tree & Scroll tumbler - blue - super
- ___ 287. Holly IC shaped bowl - amethyst - super
- ___ 288. Grape & Cable bon bon - blue - super
- ___ 289. Fisherman's mug - amethyst
- ___ 290. **N's Town Pump - purple - very rare & desirable, nice**
- ___ 291. Rooster hatpin - white
- ___ 292. Six Plums hatpin - dark
- ___ 293. Butler's Mirror hatpin - dark
- ___ 294. Big Butterfly hatpin - dark
- ___ 295. Basketflower hatpin - purple
- ___ 296. Three Fruits 9" plate w/plain back - green - nice
- ___ 297. **Tree Trunk 11" vase - ice blue - very scarce vase**
- ___ 298. Tree Trunk 11" vase - purple
- ___ 299. Orange Tree shaving mugs(2) - blue - choice
- ___ 300. **Stippled Good Luck 9" plate - blue - very rare & desirable, not many around**
- ___ 301. Wishbone tumbler - marigold
- ___ 302. **Peacock at the Fountain 4 pc. table set - marigold - outstanding set, pretty**
- ___ 303. Flute toothpick - purple
- ___ 304. Grape & Cable candlesticks - purple - sold as pair
- ___ 305. Grape & Cable candlestick - marigold
- ___ 306. **Pinwheel 6 1/2" vase - purple - very rare & desirable, nice**
- ___ 307. Leaf Columns 10" vase - purple
- ___ 308. Diamond Lace water pitcher - purple
- ___ 309. Diamond Lace tumblers (2) - purple - choice
- ___ 310. Jack in the Pulpit 6 1/2" vase - purple
- ___ 311. Fishnet epergne - purple - scarce
- ___ 312. **N's Peacock at Urn master IC bowl - ice green - very pretty & nice**
- ___ 313. **N's Peacock at Urn master IC bowl - ice blue - super nice & rare**
- ___ 314. **N's Peacock at Urn master IC bowl - purple - very pretty & scarce**
- ___ 315. 3 Buttons - Bird & Birdhouse, Hound, & Rip Van Winkle - all amethyst - choice
- ___ 316. Butterfly & Berry 7" vase - blue
- ___ 317. Diamond & Column 8" vase - green
- ___ 318. Diamond Points 10" vase - marigold - nice
- ___ 319. Northwood lamp shades (3) - marigold on moonstone - signed Northwood
- ___ 320. Greek Key lamp shades (2) - white
- ___ 321. Smooth Panel lamp shades (4) - marigold
- ___ 322. 9" Candle vase - marigold - heat check on top
- ___ 323. Several Carnival Glass books - choice

*Thanks for a great year in
Carnival Glass!*

Happy Holidays,

Jim, Jan, and Gannon

Seeck Auctions

P.O. Box 377
Mason City, Iowa 50402

First Class
U.S. Postage
PAID
Mason City, IA
Permit No. 448

