

BURNS

AUCTION SERVICE

Mid-Atlantic Carnival Glass Jamboree

**Friday & Saturday,
October 17 & 18, 1997**

*Friday: Preview 4 pm, Auction 6:30 pm,
Lots 1-100*

*Saturday: Preview 8 am, Auction 9 am,
Lots 101 - end*

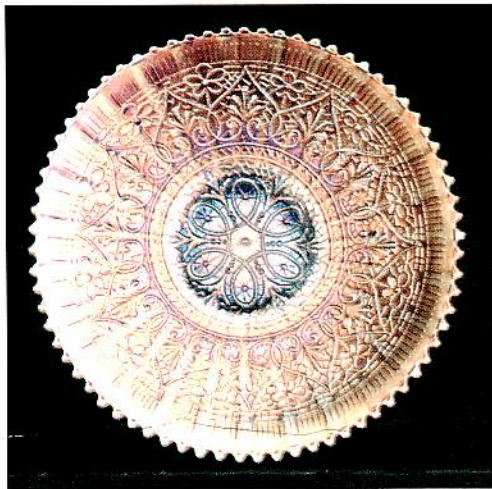
at the

Best Western - Venice Inn

431 Dual Highway (Rte. 40)

Hagerstown, MD 21740

(301) 733-0830 or (800) 283-6423



Selling the second part of the collection of David and Ruth Chronister from York, Pa. We had sold a number of their items at the Keystone Convention earlier this year. Now in this second batch, there are plenty more great items - especially a whole bunch of Northwood. This selection will make for an ideal convention auction - just enough to sell and enough rarities and beauties to make it very interesting! Don't miss it!

The auction is being held in conjunction with the Mid Atlantic Carnival Glass Jamboree, to be held October 16 - 18 at the Venice Inn. Call the motel direct at (301) 733-0830 or for reservations call 800-283-6423 and be sure to mention the Jamboree.

Mail Bids due by Noon Thursday, October 16, 1997.

Burns Auction Service

Tom Burns
P.O. Box 608
Bath, New York 14810
(607) 776-7942

Bill Richards
44 Water St., Poland, OH 44514
(330) 757-2001
FAX (330) 757-4917

Bill Richards, III
2253 Country Lane
Poland, OH 44514
(330) 755-2620

CHECK OUT BURNS AUCTION SERVICE ON THE WEB!

Visit our new Web site for information on upcoming auctions, complete auction listings and photos of auction highlights. You can e-mail your bids or requests for information.

<http://zeus.kspress.com/woodsland/burnsauction> email: brnzauctsv@aol.com

Mail Bids honored under the following conditions:

1. No deposit required. Bidders will take full responsibility to honor any and all bids we execute for them. Payment in full plus postage and handling required after notification and before we ship any item to them.
2. Items are bid on in perfect condition with average or above average iridescence OR as listed in the brochures. Bids will not be carried out when damage on an item has been found during the auction. **PEOPLE PRESENT AT AUCTION ARE RESPONSIBLE FOR FINDING ANY PINHEADS, WEAR, SPOTTINESS, MAUNFACTURER'S DEFECTS OR ANY OTHER MINOR FLAWS, ETC.**
3. Successful bidders will be notified by collect call from the auctioneer (so be sure to include phone number).
4. Phone inquiries about the glass or any other questions are welcome.
5. All non-successful bidders will receive a result summary in the mail. Results of all mail bids will be provided.
6. If you have some other person at the auction bidding for you, they must pay for the item before taking it.
7. Mail, Email, FAX and Phone bids due by Noon Thursday, October 16, 1997.

- | | |
|---|---|
| <p>____ 1. Top o' The Walk Hatpin - Dark (nice irid.)</p> <p>____ 2. Triplet (3 Bee) Hatpin - Dark (nice irid.)</p> <p>____ 2A European Grand Thistle ftd Tumbler - Blue (rare and desirable; may have pinhead on edge)</p> <p>____ 2B 4 1/2" TALL EUROPEAN (?) BERRY BAND WINE OR CORDIAL - DK. MARI. (VERY RARE ITEM; TOUGH TO FIND; NICE COLOR)</p> <p>____ 3. Fenton Kittens 2 Sided Banana Dish - Dk. Mari. (excellent detail; one of the better examples)</p> <p>____ 4. Fenton Kittens Odd Shaped Flared Toothpick Holder - Dk. Mari. (odd flared, ruffled shape)</p> <p>____ 5. FENTON ORANGE TREE FTD HATPIN HOLDER - GREEN (EXTREMELY RARE COLOR; PERFECT WITH BRONZE HIGHLIGHTS)</p> <p>____ 6. Fenton Orange Tree ftd. Hatpin Holder - Blue (super color and irid.; smoothed a bit on one foot)</p> <p>____ 7. 9" Fenton Dragon and Lotus 6 Ruffled Bowl - Blue (really nice satiny finish)</p> <p>____ 8. 9 1/4" FENTON HOLLY 8 RUFFLED BOWL - GREEN (ABSOLUTELY SUPER EXAMPLE WITH BRIGHT IRID.)</p> | <p>____ 9. FENTON HORSEHEAD MEDALLION FTD 8 RUFFLED BOWL - GREEN (VERY SCARCE WITH GREAT COLOR; TINY ROUGH SPOT ON EDGE)</p> <p>____ 10. Fenton Horsehead Medallion ftd. 8 Ruffled Bowl - Blue (very scarce; great multi-colored, goldish highlights)</p> <p>____ 10A FENTON SCALE BAND 7 PC. WATER SET - BLUE (EXTREMELY RARE; THE ONLY COMPLETE SET KNOWN; SILVERY IRID.)</p> <p>____ 11. Fenton Horsehead Medallion ftd. Flared Nut Bowl - Dk. Mari. (super color; satiny)</p> <p>____ 12. 6" FENTON TWO FLOWERS FTD. 6 RUFFLED SAUCE - AQUA (SUPER EXAMPLE WITH REALLY NICE IRID.)</p> <p>____ 13. 6" Fenton Two Flowers ftd. 6 Ruffled Sauce - Lime Green (very scarce color; nice mari. overlay)</p> <p>____ 14. 6" Fenton Two Flowers ftd. 6 Ruffled Sauce - Green (rare color; light multi-colored irid.)</p> <p>____ 15. 6" Fenton Two Flowers ftd. 6 Ruffled Sauce - Powder Blue / Mari. (very scarce with nice overlay; nice example)</p> |
|---|---|

- _____ 15A **FENTON WREATH OF ROSES PUNCH BOWL AND BASE WITH PLAIN INTERIOR - AMY. (RARE AND DESIRABLE; PERFECT WITH REDDISH IRID.)**
- _____ 16. 6" Fenton Two Flowers ftd. 6 Ruffled Sauce - Blue (nice example; odd tint when held to light)
- _____ 17. 6" Fenton Two Flowers ftd. 6 Ruffled Sauce - Mari. (satiny finish)
- _____ 18. 5 1/2" Fenton Two Flowers ftd. Flared Sauce - Pop Bottle Aqua / Mari. (odd tint with really nice overlay)
- _____ 19. **8 1/2" FENTON PEACOCK AT THE URN ICE CREAM SHAPED BOWL - WHITE (VERY SCARCE; HAS GOLD / PINK HIGHLIGHTS)**
- _____ 20. **9" FENTON PEACOCK AT THE URN BOWL WITH 3 IN 1 EDGE - GREEN (RARE SHAPE WITH GREAT HIGHLIGHTS)**
- _____ 21. 9" Fenton Peacock at the Urn 8 Ruffled Bowl - Amy. (rare color; nice satiny finish; has a fold on one ruffle)
- _____ 22. 9" Fenton Peacock at the Urn 8 Ruffled Bowl - Blue (exceptional color and irid.)
- _____ 23. Fenton Birds and Cherries 2 Handled Bon Bon - Blue (scarce; nice satiny finish)
- _____ 24. Fenton Birds and Cherries 2 Handled Bon Bon - Amy. (scarce; one side turned in a bit)
- _____ 25. **FENTON PERSIAN MEDALLION 2 HANDLED BON BON - RED (SUPER RED EXAMPLE; IRID. A BIT SILVERY)**
- _____ 25A **9" FENTON ORANGE TREE 8 RUFFLED BOWL - RED (RARE AND DESIRABLE; NICE RED COLOR; HAS MANUF. CHECK ON BASE)**
- _____ 26. **FENTON PERSIAN MEDALLION 2 HANDLED BON BON - AQUA (RARE COLOR WITH NICE MARI. OVERLAY)**
- _____ 27. Fenton Persian Medallion 2 Handled Bon Bon - Mari. / Vaseline (nice base color - very scarce)
- _____ 28. Fenton Persian Medallion 2 Handled Bon Bon - Mari.
- _____ 29. Fenton Illusion 2 Sided 2 Handled Card Tray - Blue (very scarce pattern; satiny and a bit crooked)
- _____ 30. Fenton Lotus and Grape 2 Handled Bon Bon - Amy. (very scarce color; really nice)
- _____ 31. Fenton Lotus and Grape 2 Handled Bon Bon - Blue (deep shape with great color and irid.)
- _____ 31A Fenton Knotted Beads Swung Vase with Tight Crimped Edge - Mari. (nice color and shape)
- _____ 32. Fenton Pond Lily 2 Sided Card Tray - Amy. (super example - nice)
- _____ 33. Fenton Pond Lily 2 Sided Card Tray - Blue (nice)
- _____ 34. N Three Fruits 8 Ruffled Bowl with Basketweave Exterior - Green / Mari. (nice bronze overlay)
- _____ 35. **N THREE FRUITS STIPPLED PLATE WITH RIBBED EXTERIOR - AQUA OPAL. (RARE AND VERY DESIRABLE; SUPER IRID. WITH OPAL. ON THE TIPS)**
- _____ 36. **N THREE FRUITS STIPPLED PLATE WITH RIBBED EXTERIOR - AQUA / TEAL (SUPER EXAMPLE; GREAT BASE COLOR)**
- _____ 37. **N THREE FRUITS STIPPLED PLATE WITH RIBBED EXTERIOR - ELEC. BLUE (EXCEPTIONAL IRID. - A SUPER, SUPER EXAMPLE)**
- _____ 38. **N THREE FRUITS STIPPLED 8 RUFFLED BOWL WITH RIBBED EXTERIOR - DK. MARI. (SUPER, SUPER COLOR AND IRID.)**
- _____ 39. **N PEACOCK AT THE FOUNTAIN TUMBLER - LT. AMY. WITH SLAG EFFECT (SUPER COLOR AND TINT; GREAT IRID. - RARE)**
- _____ 40. **N MEMPHIS 7 PC. RUFFLED FRUIT BOWL SET - ICE GREEN (ABSOLUTELY SUPER SET - FANTASTIC AND BEAUTIFUL)**
- _____ 41. N Memphis Punch Base only - Ice Green (flake on top edge)
- _____ 41A (7) N Memphis Handled Punch Cups - Pur. (some super examples here - selling choice)
- _____ 42. **N FRUIT AND FLOWERS STEMMED HANDLED BON BON - AQUA OPAL. (SUPER PASTEL EXAMPLE - WOW!)**
- _____ 43. **N CORN VASE WITH STALK BASE - ODD ICE GREEN (ODD TINT; HAS MARI. OVERLAY - REALLY NICE)**
- _____ 44. **N CORN VASE WITH STALK BASE - PASTEL MARI. (RARE TINT; VERY DIFFICULT TO FIND)**
- _____ 45. **N ACORN BURR 8 PC. PUNCH SET - GREEN (RARE AND VERY DESIRABLE; HAS GREAT BLUE AND RED HIGHLIGHTS)**
- _____ 46. **N BLOSSOMTIME STEMMED RUFFLED COMPOTE - MARI. (RARE; REALLY NICE PINK AND BLUE HIGHLIGHTS)**
- _____ 47. N Daisy and Plume Stemmed Ruffled Compote with Fern Interior - Mari. (scarce; very nice example with pinks and blues)
- _____ 48. **N DAISY AND DRAPE FTD. FLARED VASE - AQUA OPAL. (RARE AND DESIRABLE; HAS NICE MARI. OVERLAY)**
- _____ 49. N Daisy and Drape ftd. Turned In Vase - White (exceptional multi-colored irid.)
- _____ 50. **N BUTTERFLY 2 HANDLED BON BON WITH SPIRAL EXTERIOR - ICE BLUE (EXTREMELY RARE ITEM - SUPER COLOR AND IRID.)**
- _____ 50A **N BUTTERFLY 2 HANDLED BON BON WITH SPIRAL EXTERIOR - MARI. (RARE VARIATION WITH THIS EXTERIOR; SUPER COLOR)**
- _____ 51. N Butterfly 2 Handled Bon Bon with Plain Exterior - Green (super example)
- _____ 52. N Butterfly 2 Handled Bon Bon with Plain Exterior - Dk. Mari. (super pumpkin color and irid. - nice)
- _____ 53. **N WILD STRAWBERRY HANDGRIP PLATE WITH BASKETWEAVE EXTERIOR - PUR. (SUPER EXAMPLE WITH GREAT RED AND BLUE HIGHLIGHTS)**
- _____ 54. N Wild Strawberry Handgrip Plate with Basketweave Exterior - Green (sorta satiny / radium finish; nice)

55. N HEARTS AND FLOWERS FLAT PLATE WITH RIBBED EXTERIOR - WHITE (VERY RARE AND DESIRABLE; NICE GOLDISH / RED IRID.)
56. N HEARTS AND FLOWERS BOWL WITH PIE CRUST EDGE AND RIBBED EXTERIOR - WHITE (ANOTHER RARE ITEM WITH NICE IRID.; PINHEAD ON BASE)
57. N HEARTS AND FLOWERS PLATE WITH RIBBED EXTERIOR - PUR. (RARE AND DESIRABLE; NICE MULTI-COLORED IRID.)
58. N HEARTS AND FLOWERS PLATE WITH RIBBED EXTERIOR AND NARROW BASE - MARI. (RARE AND DESIRABLE; NICE SATINY FINISH)
59. N HEARTS AND FLOWERS RUFFLED BOWL WITH RIBBED EXTERIOR - DK. ICE BLUE (REALLY NICE EXAMPLE; VERY ATTRACTIVE)
60. N ORIENTAL POPPY 7 PC. TANKARD WATER SET - PUR. (SUPER, SUPER SET - WELL MATCHED WITH BLUE AND RED HIGHLIGHTS)
61. N ORIENTAL POPPY TANKARD WATER PITCHER - GREEN (RARE AND DESIRABLE; BRIGHT SATINY FINISH)
62. N Oriental Poppy Tumbler - Green (scarce; satiny)
- 62A N DOUBLE LOOP BREAKFAST SUGAR AND CREAMER - BLUE (EXTREMELY RARE PAIR; HAVE BEEN MATCHED FOR YEARS - NICE)
63. N Dandelion 6 pc. Tankard Water Set - Mari. (pitcher is super pastel mari. with darker tumblers)
64. N Strawberry Plate with Basketweave Exterior - Dk. Mari. (nice dark, satiny finish)
65. N ROSE SHOW RUFFLED BOWL - AQUA OPAL. (ABSOLUTELY SUPER PASTEL EXAMPLE)
66. N ROSE SHOW RUFFLED BOWL - PUR. (VERY SCARCE WITH REALLY NICE MULTI-COLORED IRID.)
67. N ROSE SHOW RUFFLED BOWL - MARI. (VERY SCARCE AND VERY ATTRACTIVE; PINKS AND BLUES)
68. N ROSE SHOW PLATE - DK. MARI. (SUPER, SUPER COLOR AND IRID. - REALLY PUMPKIN)
69. N Rose Show Flared Plate - White (super example with nice irid.; rough on one rose)
70. 14 3/4" TALL N THIN RIB MID SIZE SWUNG VASE - VASELINE (RARE AND VERY DESIRABLE; SUPER BASE COLOR AND GREAT IRID.)
71. 14" TALL N THIN RIB MID SIZE SWUNG VASE - SAPPHIRE BLUE (ANOTHER VERY RARE ITEM WITH GREAT COLOR; MAY HAVE MINOR PEELING ON EDGE)
72. 12 3/4" TALL N THIN RIB MID SIZE SWUNG VASE - ICE BLUE (RARE AND VERY DESIRABLE; NICE COLOR AND IRID.)
73. 13" TALL N THIN RIB MID SIZE SWUNG VASE - ICE GREEN (RARE AND VERY DESIRABLE; REALLY NICE EXAMPLE)
74. 13" TALL N THIN RIB MID SIZE SWUNG VASE - WHITE (RARE; NICE AND FROSTY WITH NICE IRID.)
75. 13 1/2" TALL N THIN RIB MID SIZE SWUNG VASE - BLUE (RARE AND DESIRABLE; NICE COLOR AND IRID.)
76. 13" TALL N THIN RIB MID SIZE SWUNG VASE - GREEN (VERY SCARCE; SUPER COLOR AND IRID.)
77. N RASPBERRY HANDLED MILK PITCHER - WHITE (VERY RARE AND HAS SUPER IRID.; NICE)
78. N Raspberry Handled Milk Pitcher - Green (very scarce; nice color and irid.)
79. N Raspberry Handled Milk Pitcher - Pur. (scarce; nice color and irid.)
80. N G & C STIPPLED BOWL WITH PIE CRUST EDGE AND RIBBED EXTERIOR - ICE BLUE (RARE AND VERY DESIRABLE; SUPER IRID.)
- 80A N G & C STIPPLED 8 PC. TABLE SIZE PUNCH SET - DK. MARI. (VERY SCARCE SET; REALLY NICE COLOR AND IRID.)
81. N G & C Variant Stippled Bowl with Pie Crust Edge and Ribbed Exterior - Blue / Elec. Blue (very nice example; has Elec. Blue highlights)
82. N G & C Small Size ftd. Ruffled Fruit Bowl - Blue (rare and desirable; really nice irid.)
83. N G & C Small Size ftd. Ruffled Fruit Bowl - Green (scarce; super color and irid.)
84. N G & C Covered Humidor - Pur. (rare and desirable; one prong repaired)
85. N (OR DUGAN) G & C PERFUME BOTTLE AND STOPPER - MARI. (RARE AND DESIRABLE; NICE COLOR AND IRID.)
86. (2) N G & C Cologne Bottles and Stoppers - Dk. Mari. (nice matched pair; selling choice)
87. N G & C FTD. HATPIN HOLDER - DK. MARI. (VERY SCARCE; NICE DARK COLOR AND IRID.)
88. N G & C Large Dresser Tray - Mari. (scarce; average color and irid.)
89. N G & C Small Pin Tray - Mari. (very scarce; nice irid.)
90. N G & C COVERED POWDER JAR - DK. MARI. (VERY SCARCE; HAS REALLY NICE DARK COLOR AND IRID.)
91. N G & C Pin Nappy Whimsey from Punch Cup - Dk. Mari. (scarce color and shape)
92. N G & C 7 PC. WATER SET - GREEN (NICE PITCHER - TUMBLERS HAVE BRONZE HIGHLIGHTS)
93. N G & C FTD. HATPIN HOLDER - PUR. (ABSOLUTELY SUPER ITEM WITH GREAT MULTI-COLORED IRID.)

- ____ 94. N G & C ftd. Hatpin Holder - Green (really nice example; scarce)
- ____ 95. **N G & C HANDLED BON BON WITH BASKETWEAVE EXTERIOR - ELEC. BLUE (SCARCE; SUPER COLOR AND IRID.; NICE)**
- ____ 96. **N G & C HANDLED BON BON WITH BASKETWEAVE EXTERIOR - EMERALD GREEN (ONE OF THE BEST EXAMPLES I'VE SEEN!)**
- ____ 97. N G & C Handled Bon Bon with Basketweave Exterior - Pur. (nice color and irid.)
- ____ 98. N G & C Handled Bon Bon with Basketweave Exterior - Dk. Mari. (really nice color and irid.)
- ____ 99. N G & C Stippled Handled Bon Bon with Basketweave Exterior - Pastel Mari. (very scarce; great pastel irid.)
- ____ 100. **9" N G & C VARIANT STIPPLED PLATE WITH RIBBED EXTERIOR AND OLD ROSE DISTILLERY ADV. - GREEN (SUPER BRIGHT COLOR AND IRID.; A GREAT EXAMPLE!)**

START OF SECOND SESSION

- ____ 101. **9" N G & C STIPPLED PLATE WITH RIBBED EXTERIOR - GREEN (RARE AND DESIRABLE; REDDISH IRID.)**
- ____ 102. **9" N G & C PLATE WITH PLAIN EXTERIOR - PUR. (SUPER BLUE HIGHLIGHTS)**
- ____ 103. 9" N G & C Plate with Basketweave Exterior - Pur. (scarce; satiny finish)
- ____ 104. **8" N G & C PLATE WITH BASKETWEAVE EXTERIOR - AMY WITH SLAG OPAL. (VERY RARE ITEM WITH OPALESCENT STREAKS!)**
- ____ 105. **N HEART AND FLOWERS STEMMED RUFFLED COMPOTE WITH RIBBED EXTERIOR - AQUA OPAL. (A SUPER BUTTERSCOTCH EXAMPLE WITH GREAT IRID.)**
- ____ 106. N Hearts and Flowers Stemmed Ruffled Compote with Ribbed Exterior - White (super example; frosty with great irid.)
- ____ 107. **N HEARTS AND FLOWERS STEMMED RUFFLED COMPOTE WITH RIBBED EXTERIOR - DK. MARI. (SUPER DARK EXAMPLE - REALLY NICE)**
- ____ 108. **N ACORN BURR 7 PC. WATER SET - DK. MARI. (ABSOLUTELY SUPER; ONE TUMBLER CHIPPED ON BASE)**
- ____ 109. N Greek Key Bowl with Pie Crust Edge and Basketweave Exterior - Pastel Mari. (rare shape and has super irid.; nice)
- ____ 110. **N PEACOCKS BOWL WITH PIE CRUST EDGE AND RIBBED EXTERIOR - EMERALD GREEN (SUPER COLOR WITH GREAT IRID.; ONE OF THE BEST I'VE SEEN)**
- ____ 110A **N PEACOCK AT THE URN IND. SAUCE - GREEN (VERY RARE AND DESIRABLE; TOUGH ITEM; HAS PINK HIGHLIGHTS)**
- ____ 111. **N PEACOCKS BOWL WITH PIE CRUST EDGE AND RIBBED EXTERIOR - ICE BLUE (RARE AND DESIRABLE; NICE PINK AND GOLD HIGHLIGHTS)**
- ____ 112. **N PEACOCKS BOWL WITH PIE CRUST EDGE AND RIBBED EXTERIOR - BLUE / ELEC. BLUE (SUPER EXAMPLE; REALLY NICE BLUE HIGHLIGHTS)**
- ____ 113. N Peacocks Bowl with Pie Crust Edge and Ribbed Exterior - Pur. (very scarce; nice color and irid.)
- ____ 114. **N PEACOCKS STIPPLED BOWL WITH PIE CRUST EDGE AND RIBBED EXTERIOR - DK. MARI. (SUPER EXAMPLE WITH REDDISH IRID.)**
- ____ 115. **N PEACOCKS RUFFLED BOWL WITH RIBBED EXTERIOR - ICE BLUE (VERY RARE AND REALLY NICE; GREAT IRID.)**
- ____ 116. **N PEACOCKS RUFFLED BOWL WITH RIBBED EXTERIOR - ICE GREEN (RARE - REALLY NICE EXAMPLE; EDGE NOT FILLED IN AT ONE SPOT)**
- ____ 117. **N PEACOCKS PLATE WITH RIBBED EXTERIOR - GREEN (RARE AND VERY DESIRABLE; HAS REDDISH HIGHLIGHTS)**
- ____ 118. **N PEACOCKS PLATE WITH RIBBED EXTERIOR - BLUE (RARE; REALLY NICE EXAMPLE; BRIGHT IRID.)**
- ____ 119. **N PEACOCKS PLATE WITH RIBBED EXTERIOR - PASTEL MARI. (SUPER, SUPER EXAMPLE WITH GREAT IRID.)**
- ____ 120. **N PEACOCKS STIPPLED PLATE WITH RIBBED EXTERIOR - BLUE (RARE AND DESIRABLE; NICE MULTI-COLORED HIGHLIGHTS)**
- ____ 121. **N PEACOCKS STIPPLED PLATE WITH RIBBED EXTERIOR - MARI. (SUPER COLOR WITH REALLY NICE IRID.)**
- ____ 122. **N SINGING BIRDS HANDLED MUG - AQUA OPAL. (RARE AND VERY DESIRABLE; SUPER IRID.)**
- ____ 123. **N SINGING BIRDS HANDLED MUG - ICE BLUE (EXCELLENT EXAMPLE; NICE IRID.)**
- ____ 124. **N SINGING BIRDS HANDLED MUG - HORE- HOUND (SUPER BASE COLOR WITH EXCELLENT IRID.)**
- ____ 125. **N SINGING BIRDS HANDLED MUG - ELEC. BLUE (SUPER BLUE IRID.; NICE)**
- ____ 126. **N SINGING BIRDS HANDLED MUG - EMERALD GREEN (SUPER EXAMPLE - ONE OF THE BEST)**
- ____ 127. N Singing Birds Handled Mug - Dk. Mari. (another super example - nice)
- ____ 128. **FENTON INVERTED COINDOT 7 PC. WATER SET WITH ENAMELLED PHLOX DECOR. - AMY. (EXTREMELY RARE SET IN THIS COLOR; TUMBLERS HAVE RIBBED INTERIOR)**
- ____ 129. **FENTON ZIG ZAG 5 PC. BULBOUS ENAMELLED WATER SET WITH DAISIES - WHITE**
- ____ 130. **N ROUND BUSHEL BASKET - VASELINE (EXTREMELY RARE; HAS AREA ON EDGE THAT WAS PUSHED IN)**
- ____ 131. **N ROUND BUSHEL BASKET - SAPPHIRE BLUE (SUPER RARE; GREAT COLOR AND CONDITION)**

- _____ 132. **N ROUND BUSHEL BASKET - ICE GREEN (VERY SCARCE; NICE IRID.)**
- _____ 133. **N ROUND BUSHEL BASKET - HOREHOUND (ODD TINT; NICE IRID. AND BASE COLOR)**
- _____ 134. **N ROUND BUSHEL BASKET - AMBER (ANOTHER ODD TINT; NICE IRID.)**
- _____ 135. **N ROUND BUSHEL BASKET - GREEN (REALLY TOUGH ITEM; IRID. A BIT DARK)**
- _____ 136. **N ROUND BUSHEL BASKET - VIOLET (ODD TINT; REALLY NICE BASE COLOR)**
- _____ 137. N Round Bushel Basket - Dark Blue (nice irid.; scarce)
- _____ 138. N Round Bushel Basket - Odd Lt. Blue (a different shade of cobalt)
- _____ 139. **N WISHBONE TRI-CORNERED FTD. BOWL WITH RUFFLES AND RINGS EXTERIOR - MARI. (RARE AND DESIRABLE; NICE IRID.)**
- _____ 139A **N WISHBONE FTD. RUFFLED BOWL WITH RUFFLES AND RINGS EXTERIOR - WHITE (RARE AND DESIRABLE; SUPER MULTI-COLORED IRID.)**
- _____ 140. **10" N WISHBONE CHOP PLATE WITH BASKETWEAVE EXTERIOR - PUR. (RARE AND DESIRABLE; NICE IRID.)**
- _____ 140A **10" N WISHBONE BOWL WITH PIE CRUST EDGE AND PLAIN EXTERIOR - GREEN (A DIFFERENT EXAMPLE; A DARKER GREEN WITH SUPER IRID.)**
- _____ 141. **10" N WISHBONE CHOP PLATE WITH BASKETWEAVE EXTERIOR - MARI. (ANOTHER RARE ITEM; REALLY NICE IRID.)**
- _____ 142. **N DANDELION HANDLED MUG WITH KNIGHTS TEMPLAR - ICE BLUE (SUPER EXAMPLE; NICE COLOR AND IRID.)**
- _____ 143. **N DANDELION HANDLED MUG - GREEN (NICE SATINY FINISH; A RARE COLOR)**
- _____ 144. N Dandelion Handled Mug - Pur. (very scarce; nice color and irid.)
- _____ 145. **N EIGHT SIDED BUSHEL BASKET - ICE BLUE (RARE AND DESIRABLE; NICE COLOR AND IRID.)**
- _____ 146. **N EIGHT SIDED BUSHEL BASKET - ICE GREEN (RARE AND DESIRABLE; REALLY NICE EXAMPLE)**
- _____ 147. N Eight Sided Bushel Basket - White (scarce; nice irid.)
- _____ 148. **N EIGHT SIDED BUSHEL BASKET - GREEN (RARE AND DESIRABLE; NICE DARK COLOR)**
- _____ 149. N Eight Sided Bushel Basket - Blue (very scarce; nice dark irid.)
- _____ 150. N Eight Sided Bushel Basket - Lt. Amy. (scarce; nice color)
- _____ 151. N Eight Sided Bushel Basket - Pur. (scarce; nice color)
- _____ 152. N Eight Sided Bushel Basket - Mari. (nice color and irid.)
- _____ 153. **N DRAPERY ROSE BOWL - ICE BLUE (RARE AND VERY DESIRABLE; NICE IRID.)**
- _____ 154. **N DRAPERY ROSE BOWL - PUR. (EXTREMELY RARE AND DESIRABLE; HAS EXCEPTIONAL IRID.)**
- _____ 155. **N DRAPERY ROSE BOWL - BLUE (VERY SCARCE ITEM; NICE MULTI-COLORED IRID.)**
- _____ 156. N Drapery Rose Bowl - Amy. (very scarce; nice irid.)
- _____ 157. N Drapery Rose Bowl - Pur. (another scarce example; nice)
- _____ 158. N Drapery Rose Bowl - Blue Opal. (not Carnival; actually quite rare)
- _____ 159. **13" TALL X 4 1/2" BASE X 7 3/4" WIDE N WIDE PANEL OR FLUTE FUNERAL VASE - WHITE (VERY SCARCE; NICE FROSTY COLOR AND IRID.)**
- _____ 160. **10" TALL N TREE TRUNK SWUNG VASE - AQUA OPAL. (RARE AND DESIRABLE; SORTA BUTTERSCOTCH)**
- _____ 160A 6" Tall N Tree Trunk Squatty "Tri-Oval" Vase - Amy. (neat item; just out of the mold look with a sorta tri-cornered top)
- _____ 161. **10 1/4" TALL N TREE TRUNK SWUNG VASE - ICE GREEN (RARE AND VERY DESIRABLE; NICE)**
- _____ 162. 10 1/2" Tall N Tree Trunk Swung Vase - White (very scarce; nice irid.)
- _____ 163. 10 1/2" Tall N Tree Trunk Swung Vase - Ice Blue (rare but has chip on base)
- _____ 164. Fenton Enamelled Forget Me Not Cylinder Tankard Water Pitcher with 4 Prism Band Tumblers - Dk. Mari. (very scarce; nice color and irid.)
- _____ 165. **8" TALL N DRAPERY SWUNG VASE - ICE BLUE (VERY SCARCE AND DESIRABLE; NICE IRID.)**
- _____ 166. **8 3/4" TALL DRAPERY SWUNG VASE - ICE GREEN (REALLY SHARP ITEM; PULLED NICELY)**
- _____ 167. 8" Tall N Drapery Swung Vase - White (scarce; nice color and irid.)
- _____ 168. 7 1/2" Tall N Drapery Swung Vase - Dk. Mari. (really nice color and dark irid.)
- _____ 169. 7 1/4" N Drapery Swung Vase - Green (badly damaged)
- _____ 170. **N LEAF AND BEADS FTD. ROSE BOWL - LAVENDER (EXTREMELY RARE ITEM; ONE BEAD HAS A NICK)**
- _____ 170A **N FINE CUT AND ROSES FTD ROSE BOWL - HOREHOUND (VERY RARE TINT - A BIT ODD; NICE SATINY IRID.)**
- _____ 171. **N LEAF AND BEADS FTD. ROSE BOWL - ELEC. BLUE (SUPER COLOR AND IRID. - REALLY NICE)**
- _____ 172. N Leaf and Beads ftd. Rose Bowl with Floral Interior - Dk. Pur. (scarce; nice color and irid.)
- _____ 173. N Leaf and Beads ftd. Rose Bowl with Floral Interior - Mari. (scarce; nice satiny finish)
- _____ 174. N Leaf and Beads ftd. Flared Nut Bowl with Floral Interior - Pur. (scarce; nice flare)
- _____ 174A N Leaf and Beads ftd. Flared Nut Bowl with Floral Interior - Dk. Mari. (dark color; very scarce and nice)
- _____ 175. 10 1/4" N Thin Rib Swung Vase - White (scarce; nice and frosty)

- _____ 176. 8 3/4" M'BURG BIG FISH BOWL WITH 3 IN 1 EDGE - MARI. (VERY SCARCE; NICE SATINY FINISH)
- _____ 177. M'BURG HOBNAIL ROSE BOWL - DK. MARI. (SUPER EXAMPLE; GREAT COLOR AND IRID.)
- _____ 178. 10" Tall M'burg Swirl Hobnail Swung Vase - Pur. (rare; great color and irid.)
- _____ 179. 10" Tall M'burg Swirl Hobnail Swung Vase - Green (rare; great color and irid.; manuf. peeling)
- _____ 180. M'BURG SWIRL HOBNAIL SPITTOON - DK. MARI. (SUPER, SUPER EXAMPLE WITH JUST A SMALL OPENING)
- _____ 180A HEISEY MELON RIB PINCHED IN SPITTOON - CRANBERRY FLASH (RARE ITEM WITH GREAT COLOR AND FLASHING)
- _____ 181. M'BURG SWIRL HOBNAIL ROSE BOWL - DK. MARI. (REALLY NICE EXAMPLE; NICE DARK COLOR AND IRID.)
- _____ 182. 9" Dugan Round Up Flat Plate - White (scarce; super irid.)
- _____ 183. 9" Dugan Round Up Low Ruffled Plate - Odd Amy. (sorta different; nice irid.)
- _____ 184. 9" Dugan Fanciful Low Ruffled Plate - P. Opal. (very scarce; opal. on edge)
- _____ 185. DUGAN VINEYARD BULBOUS HANDLED WATER PITCHER - P. OPAL. (SUPER RARE - PROBABLY ONE OF THE BEST EXAMPLES)
- _____ 185A DUGAN PEACOCK AT THE FOUNTAIN WATER PITCHER - PUR. (RARE COLOR FOR THIS ITEM; SATINY BRONZE IRID.)
- _____ 186. 9 1/2" DUGAN APPLE BLOSSOM TWIGS PLATE WITH PLAIN EDGE AND BASKETWEAVE EXTERIOR - P. OPAL. (RARE AND DESIRABLE; FLAT WITH GREAT OPAL.)
- _____ 187. 6 3/4" Tall Dugan Target Squatty Vase - White (very desirable shape; super irid.)
- _____ 188. Dugan Honeycomb Rose Bowl - P. Opal. (very scarce; nice color and opal.)
- _____ 189. Dugan Grape Delight 6 ftd. Rose Bowl - Mari. (very attractive; super irid.)
- _____ 189A DUGAN GRAPE DELIGHT 6 FTD. NUT BOWL - PUR. (FANTASTIC EXAMPLE; SUPER IRID. AND FEET ARE GOOD)
- _____ 190. DUGAN STORK AND RUSHES WITH LATTICE BAND HANDLED MUG - AQUA / MARI. (EXTREMELY RARE ITEM - NOT MANY KNOWN)
- _____ 191. DUGAN BEADED SHELL HANDLED MUG - WHITE (VERY RARE; SUPER IRID. - NICE!)
- _____ 192. DUGAN FISHERMANS HANDLED MUG - DK. MARI. (LIGHT BASE COLOR WITH SUPER PINK IRID.)
- _____ 193. 8 1/4" TALL DUGAN CIRCLE SCROLL SWUNG VASE - PUR. (ABSOLUTELY SUPER IRID.; MAY HAVE PINHEAD)
- _____ 194. 6 1/2" Dugan Cherries Low Ruffled Plate with Jewelled Heart Exterior - Lt. P. Opal. (scarce; opal. on edge)
- _____ 195. 7" DUGAN SKI STAR CRIMPED EDGE PLATE WITH COMPASS EXTERIOR - P. OPAL. (RARE AND DESIRABLE; SUPER OPAL.)
- _____ 195A U.S. Glass Lacy Patterned Cigarette Holder - Gold Flash (sorta like the Estate pattern; nice flashing)
- _____ 196. WESTMORELAND CORINTH JACK IN THE PULPIT VASE - BLUE OPAL. (SCARCE AND VERY DESIRABLE; SUPER IRID.)
- _____ 197. 8 1/2" WESTMORELAND CAROLINA DOGWOOD 6 RUFFLED BOWL - DK. MARI. / MILK GLASS (SUPER COLOR AND IRID.; ONE OF THE BEST)
- _____ 198. 17" TALL X 4 1/2" BASE IMPERIAL RIPPLE SWUNG FUNERAL VASE - GREEN (VERY RARE ITEM; A REALLY GREAT EXAMPLE; THIS IS NOT HELIOS)
- _____ 199. 16 1/4" TALL X 4 1/2" BASE IMPERIAL RIPPLE SWUNG FUNERAL VASE - DK. MARI. (SUPER COLOR AND IRID. FOR THIS BIG ITEM)
- _____ 200. 13" Tall Imperial Ripple Standard Swung Vase - Pur. (super, super irid.)
- _____ 200A IMPERIAL THUMBPRINT AND OVALS VASE - PUR. (A SUPER MULTI-COLORED EXAMPLE; BRIGHT IRID.)
- _____ 200B IMPERIAL GRAPE DEEP ROUND NUT BOWL - PUR. (VERY RARE SHAPE FOR THIS ITEM; NICE INTERIOR, GOLD / SILVERY ON OUTSIDE)
- _____ 201. 9 1/2" Tall Imperial Ripple Small Swung Vase - Amber (super irid. but has peeling on edge)
- _____ 202. Imperial 474 handled Milk Pitcher - Dk. Mari. (nice dark color and scarce)
- _____ 203. 7" Imperial 3 in 1 Flat Plate - Mari. (satiny; cracked)

Auction Results

For the results of this or any Burns Auction Service auction, send \$2.00 and a SASE to:

Valerie Carlsen
202 Eleanor Rd.
Horseheads, NY 14845

