

# OCTOBERFEST CARNIVAL GLASS AUCTION

Saturday, October 4, 1997 - 9:00 a.m.

(Note Time Change 9:00 a.m. C.D.S.T.)

Held Inside the Mickey Reichel Auction Center

1 Mile North of I-70 on Hwy. 5, Exit 101, Boonville, Missouri • 20 Miles West of Columbia, MO on I-70



250



200



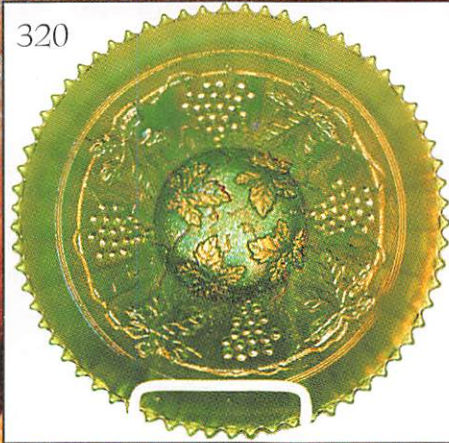
50



246



320



304



90



247



245



**SOLD WITH NO RESERVES - NO BUYERS PREMIUM**

# Held Inside the Mickey Reichel Auction Center

1 Mile North of I-70 on Hwy. 5, Exit 101, Boonville, Missouri • 20 Miles West of Columbia, MO on I-70  
Preview Friday 12 p.m. - 6 p.m. and 7:30 a.m. - 9 a.m. Day of Auction

Make Reservations **NOW** at one of these local motels:

Comfort Inn: 816-882-5317 • Super 8 Motel: 816-882-2900 • Days Inn: 816-882-8624

## Auction consists of Rarity, Great Irid. and Variety

**WRITE IN BIDS:** If you are unable to attend the auction, we will be happy to accept absentee bids which must be received by THURSDAY, October 2, 1997. Don't Delay. **FOR AUCTION PRICE RESULTS: Send S.A.S.E and \$3.00 to 516 Third Street, Boonville, MO 65233.**

**PLEASE NOTE:** There is a \$5 handling charge for each successful bid which will be added to the selling price for all write-in bids. This is in addition to the cost of postage, insurance and packing. Your write-in bid will be entered just as if you are present and bidding. Successful bidders will be notified in 1 to 3 days by the auctioneer (so be sure to include your phone number). Direct mail bids to Auctioneer **Mickey Reichel, 516 Third Street., Boonville, MO 65233-1536.** Terms: Cash or Check accepted with proper I.D. and Social Security Number and References. Announcements made day of the auction supercede all printed material. Not Responsible for Accidents or Sold Items. **No return on any items once they leave the Auction Center (No Exceptions).**

**Call for additional information: 816-882-5292 days or 816-882-5283 evenings.**

**FAX: 816-882-5292 (evening hours start FAX transmission after beep)**

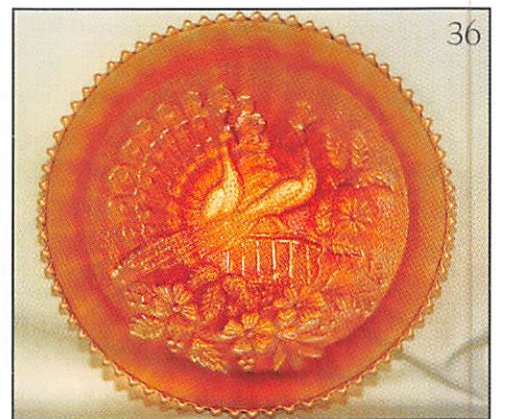


**NOTE: Remember Auction Starting Time  
1/2 Hour Early.**

**Make reservations at motel early.**

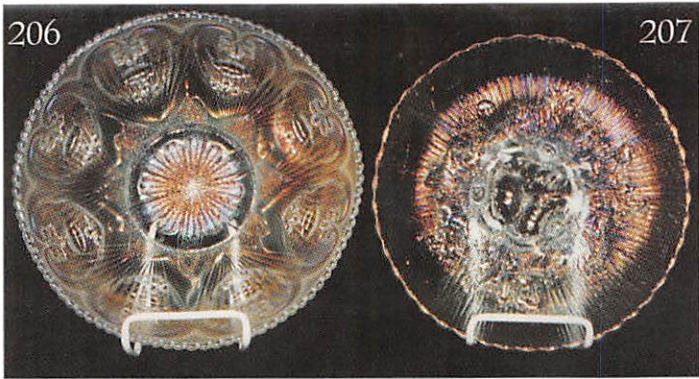
- |  |   |
|--|---|
| _____ 1. M - 8 3/4" Ripple Vase - Very Pretty                                      | _____ 21. M - 5 3/4" Star and File Plate - Flat - Rare and Super Radium - 6 Stars               |
| _____ 2. M - N Thin Rib Vase - 10 1/4" - Very Pretty                               | _____ 22. B - Garland Rose Bowl   |
| _____ 3. A - 8" Corinth Vases - A or B   | _____ 23. M - N Round Bushel Basket - Nice Example  |
| _____ 4. B - 12" April Showers Vase - Peacock Tail Int. - A Beauty                 | _____ 24. G - Fenton Vintage Compote - Rare Color - Base Chip                                   |
| _____ 5. G - 12 3/4" Fenton Fine Rib Vase - Dark Base Color                        | _____ 25. P - 7 1/4" - Ruffle C.R.E. Honey Comb Bowl - Beauty Multi Irid.                       |
| _____ 6. Lime Vaseline - 6 3/4" Dia. Point Column Vase - Squatty - Rare Color      | _____ 26. Teal - 8 1/2" - 2 Sides Up Corinth Plate - Rare Shape                                 |
| _____ 7. Lav. 9 1/2" Rustic Vase - Pastel Rarity                                   | _____ 27. B - Orange Tree Powder Jar w/Lid - Very Pretty - Minor Lid Roughness                  |
| _____ 8. B - Spat. FTD. Fenton I.C.S. Grape and Cable Bowl - Scarce Shape          | _____ 28. M - Floral and Grape Bulbous Water Pitcher - Dark Radium Top to Bottom                |
| _____ 9. G - Ball FTD. Fenton Ruffle Grape and Cable Bowl                          | _____ 29. G - Blackberry - 2 Row Open Edge B.W. Basket - Very Scarce Color                      |
| _____ 10. A - Ball FTD. Fenton Ruffle Grape and Cable Bowl                         | _____ 30. P - 8 Ruffle N Peacocks Bowl - Rare B.W. Ext. - Super Elec. & Purples                 |
| _____ 11. M - 10 Ruffle Windflower 9" Bowl - Scarce Shape & Pretty                 | _____ 31. M - 5 1/2" Round Mlbg. Blackberry Wreath Bowl - Radium                                |
| _____ 12. M - 6 Ruffle Pony Bowl - Always in Demand                                | _____ 32. A - 5 3/4" Tight C.R.E. Blackberry Wreath Bowl - Radium - Scarce Shape                |
| _____ 13. A - 6 Ruffle Heart and Vine Bowl - 9" - Very Pretty                      | _____ 33. A - 8 1/4" 3 in 1 Mlbg. Grape Wreath Star VT. Center Bowl - Radium - Rare             |
| _____ 14. M - Collar Base - 8 Ruffle Dragon and Lotus Bowl - Very Pretty           | _____ 34. B - 10" - 6 Ruffle FTD. Fan Tail Bowl - Super Multi Elec.                             |
| _____ 15. B.A. - N - Stipple Ray and Wild Rose Ext. FTD. Bowl - Rare Color         | _____ 35. M - Constellation Ruffled Compote - Scarce Color                                      |
| _____ 16. M - Fenton Peacock and Urn Compote                                       | _____ 36. P.M. 9" Stippled N Peacocks Rib Back Plate - Multi Pinks, Blues & Golds - Very Scarce |
| _____ 17. Clam. - 4 1/4" Round Frosted Block Compote - Scarce Size                 | _____ 37. B - 7 Pc. Enameled Cherries Water Set w/Little Flowers - Nice One                     |
| _____ 18. P.O. - Dome Base, 10 Ruffle Flowers and Frames Bowl                      | _____ 38. B - Blackberry Mini Compote - Scarce w/Deep Strike on Berries                         |
| _____ 19. A - N Fine Cut and Roses Candy Dish - Good Feet                          | _____ 39. M - J.I.P. FTD. Horse Medallion Bowl - Always in Demand                               |
| _____ 20. G - 7 1/2" - 6 Ruffle Smooth Ray Bowl - Poppy On Ext. Base - Very Scarce | _____ 40. G - Fenton Butterfly Bon Bon - Nice One - 2 Sides Up                                  |

- \_\_\_\_\_ 41. M - Persian Med. Bon Bon - Darker than Most - 2 Sides Up
- \_\_\_\_\_ 42. M - Two Sides Up Mlbg. Holly Whirl Bon Bon - Radium
- \_\_\_\_\_ 43. **G - 4 Sides Up Peacock Tail Bon Bon - Very Scarce**
- \_\_\_\_\_ 44. **Clam. - Low Ruffle Super 9" Imp. Grape Plate - 1 5/8" Off Table - Pink & Blues**
- \_\_\_\_\_ 45. **Light G - 9" Imperial Grape Plate - Glows Under Black Lite**
- \_\_\_\_\_ 46. **Light G - Oval Imperial Pansy Dresser Tray - Also Glows Vas.?**
- \_\_\_\_\_ 47. Teal - Oval Imperial Wind Mill Bowl - Glows
- \_\_\_\_\_ 48. M - 8 1/4" Round Orange Tree Bowl - Lots of Pinks - Beauty
- \_\_\_\_\_ 49. **M - P.C.E. Nippon Bowl - Rare B.W. Ext. - Super**
- \_\_\_\_\_ 50. **B - 9 1/2" Persian Medallion Plate - Super Even Irid.**
- \_\_\_\_\_ 51. **A - Daisy Squares 2 Sides Up Rose Bowl - Very Rare - 1 of a Kind?**
- \_\_\_\_\_ 52. M - Mini Daisy and Button - Robert Hansen Spittoon - A Beauty
- \_\_\_\_\_ 53. G - Town Pump Signed Robert Hansen
- \_\_\_\_\_ 54. Teal - Swan Signed Robert Hansen Salt - Super
- \_\_\_\_\_ 55. Teal - Owl Hansen Tooth Pick Holder
- \_\_\_\_\_ 56. Celeste B - Fenton Roses Signed Hansen Tumbler
- \_\_\_\_\_ 57. I.B. - Hobstar and Fine Cut Hansen Tumbler
- \_\_\_\_\_ 58. A - Singing Bird Signed Hansen Mug
- \_\_\_\_\_ 59. **Red - Honey Comb Signed Hansen Tumbler**
- \_\_\_\_\_ 60. I.B. - Eye Winker Signed Hansen Tumbler
- \_\_\_\_\_ 61. B - Maple Leaf Signed Hansen Covered Sugar
- \_\_\_\_\_ 62. M - Sea Gulls Signed Hansen Bowl - From Presznicks Museum
- \_\_\_\_\_ 63. **Red - 49er Signed Hansen Shot Glass**
- \_\_\_\_\_ 64. Lav. - Stars Signed Hansen Salt Dip
- \_\_\_\_\_ 65. Pink Opal - Michigan Hansen Tooth Pick
- \_\_\_\_\_ 66. Red - Bird w/Seed Signed Hansen Lg. Salt Dip
- \_\_\_\_\_ 67. Red - Mini Hen on Next Signed Hansen Cov. Dish
- \_\_\_\_\_ 68. **B - 10 1/4" N Tree Trunk Vase - Super Elec. and Rare Color**
- \_\_\_\_\_ 69. **B - 13 3/4" Thin Rib Mid Size Funeral Vase - 4 3/4" Base - 5 3/4" Top**
- \_\_\_\_\_ 70. **G - 12" Mlbg. Hobnail VT. Mid Size Funeral Vase - Scarce**
- \_\_\_\_\_ 71. P - Grape and Cable Humidor - 1969 - Preznicks Museum
- \_\_\_\_\_ 72. B - Fenton Vintage Bon Bon - Very Scarce Color
- \_\_\_\_\_ 73. P - N Grape and Cable Sweet Meat Compote - Very Nice & Popular
- \_\_\_\_\_ 74. W - Leaf Ray Tri-Corner Nappy - Super Frosty Blues
- \_\_\_\_\_ 75. W - Two Sides Up Pond Lilly Bon Bon - Blues & Pinks - Scarce
- \_\_\_\_\_ 76. **P - 11" Ruffled Dugan Heavy Grape - Great One - Rare Few Offered**
- \_\_\_\_\_ 77. **B.A. - Emu Large Compote - Very Rare and Super 9 1/2" Wide**
- \_\_\_\_\_ 78. **Lav. A - 6 1/4" Fern Brand Choc. Hand Grip Plate - A Beauty**
- \_\_\_\_\_ 79. G - N Fine Cut and Roses, Rose Bowl - Very Nice - Scarce Color
- \_\_\_\_\_ 80. M - 8 1/2" N Grape and Cable B.W. Plate - Dark Example
- \_\_\_\_\_ 81. B - 7 3/4" Leaf Chain Plate - Pink and Blue Hi-lites
- \_\_\_\_\_ 82. Lav. - A - Spat. FTD. 3 Fruits Medallion Bowl - Thick Rich Dugan Irid.
- \_\_\_\_\_ 83. **A - 6" Tri Corner Pulled Up Peacock Tail Plate - Scarce**
- \_\_\_\_\_ 84. M - 6 1/2" Persian Medallion Plate - Smooth Back - Pretty & Scarce
- \_\_\_\_\_ 85. G - Persian Medallion Wreath Rose Punch Cups - 2x\$ - Pretty
- \_\_\_\_\_ 86. B - Persian Medallion Wreath Rose Punch Cups - 2x\$ - Pretty
- \_\_\_\_\_ 87. A - Persian Medallion Punch Cup & Wreath Rose Ext.
- \_\_\_\_\_ 88. M - N Oriental Poppy Tumblers - 4x\$ - Pretty Ones
- \_\_\_\_\_ 89. M - Imperial Windmill Tumblers - 2x\$ - Radium
- \_\_\_\_\_ 90. **B - 9 1/4" Fenton Leaf Chain Plate - Rare Color & Size - Best I've Seen**
- \_\_\_\_\_ 91. **A - 7 3/4" N - B.W. Grape and Cable VT. Plate - Leaf Center - Super Item**
- \_\_\_\_\_ 92. M - N Wishbone FTD. Bowl - Beautiful Marigold Example
- \_\_\_\_\_ 93. M - 10 1/2" Round Scalloped FTD. Stag and Holly Bowl - Great Pink & Blues
- \_\_\_\_\_ 94. M - 8 3/4" N Grape and Cable VT. Smooth Back Plate - Very Nice
- \_\_\_\_\_ 95. B - N Grape and Cable Punch Cup - Scarce Color & Pretty
- \_\_\_\_\_ 96. M - 9 1/2" Ruffled Oval and Round Bowl - Beautiful Radium
- \_\_\_\_\_ 97. M - Cornucopia 5" Vase - Scarce Item
- \_\_\_\_\_ 98. G - N Beaded Cable Rose Bowl - Rayed Interior
- \_\_\_\_\_ 99. B - Fenton Floral and Grape VT. Tumbler - Deep Blue Base
- \_\_\_\_\_ 100. **A - Lattice and Daisy Tankard Pitcher - Radium - Rare - Pink Hi-lites**
- \_\_\_\_\_ 101. M - Premium Candle Sticks Pair - Radium & Pretty
- \_\_\_\_\_ 102. M - Hex Base VT. Radium Candle Sticks
- \_\_\_\_\_ 103. M - Lea Pattern Cream and Sugar - English - Sold as Pair
- \_\_\_\_\_ 104. B - Butterfly and Blackberry Tumbler - Beautiful Multi Irid.
- \_\_\_\_\_ 105. M - (3) Fenton Waterlily Tumblers - Pretty Ones - 3x\$
- \_\_\_\_\_ 106. P.O. - Dugan Dogwood Sprays - 10 Ruffle Bowl - Dome Base - Base Chip
- \_\_\_\_\_ 107. P.O. - 9" C.R.E. Smooth Ray Caroline Bowl - Beautiful Irid
- \_\_\_\_\_ 108. **M - 7 Pc. Imperial Grape Decanter and 6 Wines - Nice Set**
- \_\_\_\_\_ 109. M - Golden Harvest Decanter - Nice Item
- \_\_\_\_\_ 110. M - Star Medallion Milk Pitcher - Dark Radium



- \_\_\_\_\_ 111. P - 10" N Tree Trunk Vase - Very Pretty
- \_\_\_\_\_ 112. M - 9 $\frac{3}{4}$ " N Tree Trunk Vase - Multi Irid
- \_\_\_\_\_ 113. B - 12" April Showers Vase - Plain Int. Multi Radium
- \_\_\_\_\_ 114. A - 11" April Showers Vase - Peacock Tail Int. - Radium
- \_\_\_\_\_ 115. M - Stippled Coin Spot Ruffle Compote - Great Example
- \_\_\_\_\_ 116. P.O. - Plain Coin Spot Compote - Super Opal
- \_\_\_\_\_ 117. M - Illusion 2 Sides Up Bon Bon - Great Example
- \_\_\_\_\_ 118. A - 8 $\frac{1}{2}$ " - 3 in 1 Autumn Acorns Bowl - Scarce Color - Rare Shape
- \_\_\_\_\_ 119. **P - 9" N - 3 Fruits Plate - Smooth Back - Super Multi Stretch Irid.**
- \_\_\_\_\_ 120. **P - 9" N - B.W. Ext. Good Luck Plate - Very Scarce - Way Above Ave.**
- \_\_\_\_\_ 121. B.A. - Beaded Necklaces - 1-16 $\frac{1}{2}$ " or B - 24"
- \_\_\_\_\_ 122. M - Poinsettia Milk Pitcher - Smoke Tint Base
- \_\_\_\_\_ 123. A - N Memphis Punch Cup
- \_\_\_\_\_ 124. P - N Grape and Cable Punch Cup
- \_\_\_\_\_ 125. Lav. - 7 $\frac{1}{2}$ " Beauty or Twigs Tall Vase - Marigold Irid.
- \_\_\_\_\_ 126. M - 12 $\frac{1}{2}$ " April Shower Swung Vase - Pl. Int. - Radium
- \_\_\_\_\_ 127. **A.O. - 10" - N - 4 Pillars Vase - Heavy Butterscotch Overlay**
- \_\_\_\_\_ 128. **G - 9" Swirled Flute Vase - Deep Green - Very Scarce**
- \_\_\_\_\_ 129. Lav. A - 9" Swirl Flute Vase - Also Scarce Color
- \_\_\_\_\_ 130. P - 8 $\frac{3}{4}$ " Collar Base Greek Key Bowl - B.W. Ext. - Nice Multi Irid.
- \_\_\_\_\_ 131. **B - 8 Ruffle Fenton Peacock and Urn Bowl - Near Elec. Blue - Great**
- \_\_\_\_\_ 132. A - 8 Ruffle Fenton Peacock and Urn Bowl - Purple, Pinks & Gold Irid. - Very Scarce Color
- \_\_\_\_\_ 133. P.M. - 9" N - 3 Fruits B.W. Plate - Super Nice Example
- \_\_\_\_\_ 134. M - 9" N - Stippled - 3 Fruits Plate - Rib Back - Very Desirable
- \_\_\_\_\_ 135. **P - 9" N Peacocks Rib Back Plate - Super Multi Elec.**
- \_\_\_\_\_ 136. **M - Crider, Great Spittoon from Tumbler Pattern ? - Super Item**
- \_\_\_\_\_ 137. W - Crider Tumblers - Super Frosty - A, B, C, or D - Patterns ?
- \_\_\_\_\_ 138. M - Crider Tumbler - Super Irid. - Pattern ?
- \_\_\_\_\_ 139. M - Crider Maple Leaf Tumbler - Super Irid
- \_\_\_\_\_ 140. G - Crider 5 $\frac{1}{2}$ " Art Glass Irid. Treaded Vase
- \_\_\_\_\_ 141. W.O. - 9 $\frac{1}{2}$ " - 8 Ruffle Jewel Heart Bowl - Pretty - Not Irid.
- \_\_\_\_\_ 142. Vas. Opal - 11" Fenton Farm Yard Chop Plate - Signed - D.B.S. - Contemporary
- \_\_\_\_\_ 143. **Deep Teal - Octagon Spooner - Beautiful Base Color - Very Rare**
- \_\_\_\_\_ 144. M - N Grape & Cable Punch Cup
- \_\_\_\_\_ 145. **A - Vintage Interior, Wreath Rose Punch Cup - Very Scarce Color**
- \_\_\_\_\_ 146. G - N Grape and Cable Punch Cup
- \_\_\_\_\_ 147. A - Stork and Rushes Punch Cup - Very Pretty & Scarce
- \_\_\_\_\_ 148. M - Stork and Rushes Punch Cups - Nice Set - 6x\$
- \_\_\_\_\_ 149. M - Stork and Rushes Mug - Dark Satin - Nice Mug
- \_\_\_\_\_ 150. M - Acanthus 8" Round Bowl - Super Pretty
- \_\_\_\_\_ 151. **M - 9" Imperial Grape Plate - Pretty Blues & Pinks**
- \_\_\_\_\_ 152. M - Stork ABC Child's Plate
- \_\_\_\_\_ 153. M - 7 $\frac{1}{2}$ ", 8 Ruffle Grape & Cable Collar Base Fenton Bowl - Super
- \_\_\_\_\_ 154. M - 9 $\frac{3}{4}$ " N Diamond Points Vase - Vases are Hot Item
- \_\_\_\_\_ 155. **G - 8 $\frac{3}{4}$ " N Tree Trunk Vase - 32 Pt. Star Base VT. - Pretty**
- \_\_\_\_\_ 156. M - 10 $\frac{1}{2}$ " N Tree Trunk Vase - Smooth Base
- \_\_\_\_\_ 157. A - 11 $\frac{1}{4}$ " April Showers Vase - Very Pretty - Scarce Color
- \_\_\_\_\_ 158. G - 11 $\frac{1}{2}$ " Ripple Vase
- \_\_\_\_\_ 159. **Deep Russet Olive - 12" Ripple Vase - Light Silver Irid.**
- \_\_\_\_\_ 160. M - Hobnail Soda Gold Spittoon
- \_\_\_\_\_ 161. **Vaseline - Hobnail Soda Gold Spittoon - Very, Very Rare & Pretty**
- \_\_\_\_\_ 162. **W - N Grape and Cable Hat Pin Holder - Rare & Frosty**
- \_\_\_\_\_ 163. B.A. - N Grape and Cable Hat Pin Holder - Also Rare
- \_\_\_\_\_ 164. G - N Grape and Cable Hat Pin Holder - Always in Demand
- \_\_\_\_\_ 165. **P.M. - 9" N Peacocks Plate - Rib Back - Lav., Rich Golds, Blue Irid. - Beauty**
- \_\_\_\_\_ 166. **B - 9 $\frac{1}{4}$ " Heart and Vine Plate - Beautiful Multi Satin**
- \_\_\_\_\_ 167. **Horehound Pastel - 8 $\frac{1}{2}$ " Lined Lattice Vase - Super Rare & Pretty**
- \_\_\_\_\_ 168. **P - 13" Tree Trunk Mid Size Funeral Vase - 4 $\frac{1}{4}$ " Base - 5" Top - Super**
- \_\_\_\_\_ 169. **B.A. - Squatty 5" Lined Lattice Vase - 5 $\frac{3}{4}$ " Wide Top - Super Multi Irid.**
- \_\_\_\_\_ 170. **Lime Pastel I.G. - 11" N Leaf Column Vase - Rare - Pretty Pastel**
- \_\_\_\_\_ 171. W - Grape Delite Rose Bowl - Underrated Pattern & Pretty
- \_\_\_\_\_ 172. A - Grape Delite Rose Bowl
- \_\_\_\_\_ 173. M - Grape Delite Rose Bowl - Beauty - Round Top VT.
- \_\_\_\_\_ 174. **Smokey Purplish - Fenton Flowers Rose Bowl - Scarce Color**
- \_\_\_\_\_ 175. G - Daisy and Plume FTD. N Rose Bowl - Rays Int. - Good Feet
- \_\_\_\_\_ 176. M - 7" - 8 Ruffle Fenton Acorn Bowl - Very Pretty & Dark
- \_\_\_\_\_ 177. **Em. G - 8" Deep Round Orange Tree Bowl - Beautiful Bowl**
- \_\_\_\_\_ 178. **Em. G - 7 $\frac{3}{4}$ " Deep Round Dragon and Lotus Bowl - Beautiful Bowl**

- \_\_\_\_\_ 179. G - N - P.C.E. Grape and Cable Bowl - Smooth Bk. Vt. - Super G, Pinks and Blues
- \_\_\_\_\_ 180. M - N Poppy Pickle Dish - Beautiful Blue, Pinks and Golds
- \_\_\_\_\_ 181. Oxblood - 9" N Ruffle Strawberry BW. Ext. Bowl - Rich Satin Irid.
- \_\_\_\_\_ 182. **P - 11" N - 8 Ruffle N Grape and Cable Bowl - B.W. Ext. - Great One**
- \_\_\_\_\_ 183. G - N Fruits and Flowers Pedestal Bon Bon Compote - Nice
- \_\_\_\_\_ 184. W - 8" I.C.S. Leaf Chain Bowl
- \_\_\_\_\_ 185. P.O. - 11" - 6 Ruffle Lg. Ski Star and Compass Bowl
- \_\_\_\_\_ 186. **M - 11" Ft. Round 12 Scollop Stag and Holly Bowl - Super Radium**
- \_\_\_\_\_ 187. **P - Star Fish Bon Bon - Scarce and Nice**
- \_\_\_\_\_ 188. A - 10" - 3 in 1 Fenton Vintage Bowl - Great Pinks & Blues - Scarce Shape
- \_\_\_\_\_ 189. **Smoke - Rare Imperial Scroll and Flower Panels Vase - Chip on Top (So?)**
- \_\_\_\_\_ 190. Lav. A - 2 Row Open Edge Blackberry Ruffle Basket - Very Scarce
- \_\_\_\_\_ 191. A - N - 9" Grape and Cable B.W. Plate - Always a Favorite
- \_\_\_\_\_ 192. M - 6" - 12 Sided Pine Cone Plate - Smooth Back
- \_\_\_\_\_ 193. B - 5½" Round Pine Cone Berry Bowl
- \_\_\_\_\_ 194. M - 8½" N - 8 Ruffle Strawberry VT. Smooth Bk. Bowl - Very Pretty
- \_\_\_\_\_ 195. B - 8½" - 3 in 1 Fenton Vintage Bowl - Pretty - Neat Shape
- \_\_\_\_\_ 196. A - 8½" - 3 in 1 Fenton Vintage Bowl - Pretty - Neat Shape
- \_\_\_\_\_ 197. Clam. - 8" Square Imp. Frosted Block Bowl - Signed - Made in U.S.A.
- \_\_\_\_\_ 198. **M - Banded Grape and Cable Hat Pin Holder - Rare w/Good Feet & Pretty**
- \_\_\_\_\_ 199. B - Orange Tree Hat Pin Holder - Multi Irid. - Very Desirable
- \_\_\_\_\_ 200. **B - Rose Show Plate - Near Elec. - Beautiful Plate**
- \_\_\_\_\_ 201. **B - Flat 9" Round Up Plate - Radium Rare Dugan Blue**
- \_\_\_\_\_ 202. M - 10¼" N Grape and Cable I.C.S. Bowl - Great - Pinks & Golds
- \_\_\_\_\_ 203. AO. - N Drapery Rose Bowl - Very Nice
- \_\_\_\_\_ 204. M - N Drapery Rose Bowl - Scarce Color - Few Sold
- \_\_\_\_\_ 205. M - 9½" Large, FTD. Panthers Bowl - Great Multi Pinks, Blues & Greens
- \_\_\_\_\_ 206. **W - 10" Round Petal and Fan Bowl - Rare Shape - Few Known**
- \_\_\_\_\_ 207. **W - Poppy Show Plate - Pretty One**
- \_\_\_\_\_ 208. **W - 11" I.C.S. Persian Garden Bowl - A Beauty**
- \_\_\_\_\_ 209. Lav. A - 10½" I.C.S. N Ice Cream Bowl - Nice One
- \_\_\_\_\_ 210. Lav. A - 6½" Imperial Grape Plate - Beauty - Almost a #10
- \_\_\_\_\_ 211. A - 7½" Fenton Flat Vintage Plate - Super Multi Radium
- \_\_\_\_\_ 212. **G - N Round Bushel Basket - Very Rare Smooth Handles**
- \_\_\_\_\_ 213. I.B. - N - 8 Sided Pastel Bushel Basket - Pink & Blues - Very Scarce
- \_\_\_\_\_ 214. **I.G. - N - 8 Sided Bushel Basket - Bluish High Lites - Very Scarce**
- \_\_\_\_\_ 215. G - N - 8 Sided Bushel Basket - Super Near Em. Green - Very Rare Color
- \_\_\_\_\_ 216. **M - N - Round Bushel Basket - Super - Pumpkin w/ Pinks**
- \_\_\_\_\_ 217. White Opaline - Saw Tooth Compote - NOT IRID.
- \_\_\_\_\_ 218. M - 7½" Horse Medallion Flat Plate - Pinks and Blues - Very Popular
- \_\_\_\_\_ 219. Saph. - 10" Big Basket Weave Vase - Scarce Color
- \_\_\_\_\_ 220. Vas. - 7" Vintage Ruffle Fenton Bowl - Vaseline Hot
- \_\_\_\_\_ 221. **Vas. Opal - Strawberry Bon Bon Fenton - Very Rare & Pretty One**
- \_\_\_\_\_ 222. **M - Ruffled Concord Bowl - Super Pinks and Golds - Dark**
- \_\_\_\_\_ 223. **M - 9" Captive Rose Plate - Pinks, Greens and Golds - Very Scarce**
- \_\_\_\_\_ 224. M - N Blossomtime Compote - Dark and Scarce
- \_\_\_\_\_ 225. **B - Rare Lily of the Valley Tumbler - Tough and Nice**
- \_\_\_\_\_ 226. **G - N Super Multi Irid. Acorn and Burr Tumbler**
- \_\_\_\_\_ 227. **G - Blackberry Block Tumbler - Super and Rare**
- \_\_\_\_\_ 228. G - Mlbg. Diamonds Tumbler - Radium & Nice
- \_\_\_\_\_ 229. G - Memphis N Punch Cup - Very Pretty
- \_\_\_\_\_ 230. P.M. - Ruffled N B.W. Good Luck Bowl - Lots of Blues & Golds
- \_\_\_\_\_ 231. **I.G. - N Ruffled Hearts and Flowers Bowl - Scarce - Sharp Point**
- \_\_\_\_\_ 232. **Reng. B - Ruffle Rose Show VT. Bowl - Even Irid. - Rare Color**
- \_\_\_\_\_ 233. **M - Rising Sun 8¼" Tall Pitcher - Juice Size - Very Rare**
- \_\_\_\_\_ 234. **M - Rising Sun 9¼" Tall Pitcher - Water Size - Also Rare**
- \_\_\_\_\_ 235. W - 9¼" Dugan Dome Base Double Stem Roses Plate - Great Pink & Blues
- \_\_\_\_\_ 236. W - P.C.E. Nippon Bowl w/Rib Ext. - Frosty w/Blue Hilites - Scarce Shape
- \_\_\_\_\_ 237. B - Iris Compote - Beauty - Very Rare Color - Ruffled Shape
- \_\_\_\_\_ 238. **I.G. Vas. Florentine - Windflower Nappy - Rare - Glows Wild**
- \_\_\_\_\_ 239. **MMG - 8¼" Ruffle Carolina Dogwood Bowl - Super Rarity**
- \_\_\_\_\_ 240. **P - 10" - 10 Ruffle Imperial Heavy Grape Bowl - Super - The Best**
- \_\_\_\_\_ 241. **A - 5¾" Mlbg. Round 12 Scollop Cloverleaf Grape VT. Bowl - Super Radium**
- \_\_\_\_\_ 242. **B - 9" FTD. I.C.S. Fantail Bowl - Super Multi Elec.**
- \_\_\_\_\_ 243. **P - 9" C.R.E. Dugan Rare Tri-Corner Flowers and Frames Bowl - Super**



- \_\_\_\_\_ 244. P - 7" Rare Imp. Scroll Embossed Bowl - Ext. Hobstar & Tassel - Super Irid.
- \_\_\_\_\_ 245. Lav. - 9" N Peacocks, Rib Back Plate - Super Even Irid. - Fabulous - Ultra Rare
- \_\_\_\_\_ 246. G - 9" N Stippled B.W. Back Strawberry Plate - Rich Gr. & Golds - None Sold
- \_\_\_\_\_ 247. M - 9" N Stippled Rib Back Strawberry Plate - Dark & Super
- \_\_\_\_\_ 248. M - Curved Star or Cathedral - 18½" Tall - 12" Center Ultra Rare - Epergne
- \_\_\_\_\_ 249. B.A. - 9½" Holly Fenton Plate - Super Blues and Pinks - Very Scarce
- \_\_\_\_\_ 250. B - 6¼" Peacock Tail Flat Plate - Super Irid. Front & Back - 1 of 2?
- \_\_\_\_\_ 251. M - 10" - 8 Ruffle N Stippled Rays B.W. Bowl - Nice Bowl
- \_\_\_\_\_ 252. G - N FTD. Wild Rose Ext. Rayed Int. Bowl - Sides Go Straight Up
- \_\_\_\_\_ 253. M - Pumpkin 8" I.C.S. Collar Base Peacock and Grape Bowl
- \_\_\_\_\_ 254. B - Fenton 8 Ruffle Peacock and Urn Bowl - Dark Nice Multi Irid.
- \_\_\_\_\_ 255. P.O. - 8" Dugan Ruffled Stippled Flower Bowl - Lots of Opal
- \_\_\_\_\_ 256. B - Horse Medallion Nut Bowl - Super - Open Factory Bubble in Foot
- \_\_\_\_\_ 257. Russet G - 9¼" Ruffled FTD. Panthers Bowl - Rare Color and Pretty
- \_\_\_\_\_ 258. B - 5½" Round Persian Medallion Bowl - Little Scarce Beauty
- \_\_\_\_\_ 259. M - 9" Ruffled Orange Tree Bowl - Pinks and Blues - Nice
- \_\_\_\_\_ 260. B - N Ruffled Rib Back Peacocks Bowl - Super Multi Irid. Front & Back
- \_\_\_\_\_ 261. G - 8" I.C.S. Dragon and Lotus Bowl - Super Emerald
- \_\_\_\_\_ 262. P - N Grape and Cable Cracker Jar - Super Multi. - 2 Tiny Rim Nicks
- \_\_\_\_\_ 263. A - 9¼" Mlbg. 3 in 1 Zig Zag Bowl - Rich Satin - Plain Ext.
- \_\_\_\_\_ 264. M - Star and File Water Pitcher - Super Pinks & Blues - Radium
- \_\_\_\_\_ 265. M - Ranger Sugar Bowl - No Lid or Spooner
- \_\_\_\_\_ 266. M - Hobstar Band Compote - Ruffled 6" Top - 4½" Tall - Rare Item
- \_\_\_\_\_ 267. Clear - Pedestal Rose Bowl - Blown Glass - Marigold Irid On Top ?
- \_\_\_\_\_ 268. P.O. - 6½" Four Flowers Plate - Basketweave VT. Ext. - Lots of Opal
- \_\_\_\_\_ 269. P. M - or Clam - 10" Fenton Bud Vase - Radium Beauty
- \_\_\_\_\_ 270. W - Hearts and Flowers Compote - Nice Example
- \_\_\_\_\_ 271. G - FTD. Ruffle Horse Medallion Bowl - Very Scarce & Nice
- \_\_\_\_\_ 272. B - 9" - 8 Ruffle Square Shape Plaid Bowl - Super and Rare
- \_\_\_\_\_ 273. M - 9" - 8 Ruffle Shape Plaid Bowl - Super Pumpkin & Scarce
- \_\_\_\_\_ 274. A - N Ruffled Nippon Bowl - Rare B.W. Ext. - Super Irid. - Even
- \_\_\_\_\_ 275. M - Dugan Dome Base Ruffle 5 Hearts Bowl - Very Tough to Find - Great One
- \_\_\_\_\_ 276. Celest B - Ruffled 8½" Double Stem Roses Bowl - Rare Color
- \_\_\_\_\_ 277. M - Contemporary Tumbler - Pattern - ?
- \_\_\_\_\_ 278. B - Fenton Peacock and Urn Ruffled Bowl - Near Electric - Great
- \_\_\_\_\_ 279. G - 9½" P.C.E. N Wishbone Bowl - Rare Shape - Neat Bowl
- \_\_\_\_\_ 280. M - 9" - N Stippled Three Fruits Rib Bk. Plate - Popular Pattern
- \_\_\_\_\_ 281. M - 6 Ruffle Radium Brooklyn Bridge - Super Radium
- \_\_\_\_\_ 282. A - 10" - 6 Ruffle Little Flowers Bowl - Pinks and Blues
- \_\_\_\_\_ 283. M - 9¼" Mlbg. Ruffle Whirling Leaves Bowl - Super Pretty Multi Irid.
- \_\_\_\_\_ 284. P - Dugan Large Beaded Basketweave 2 Handle Basket - Very Scarce Color
- \_\_\_\_\_ 285. G - N Leaf Beads Nut Bowl - Stipple Ray Int. - Super Item
- \_\_\_\_\_ 286. B.A. - Leaf Beads Rose Bowl w/Floral Int.
- \_\_\_\_\_ 287. G - N Butterfly Bon Bon - Smooth Back - Beautiful
- \_\_\_\_\_ 288. B - Fenton Strawberry Bon Bon - Pretty w/Sharp Detail
- \_\_\_\_\_ 289. M - 5¼" Ruffled Panther Berry Bowl
- \_\_\_\_\_ 290. Powder Blue Base - 5½" Round Panther Berry - Rare Color
- \_\_\_\_\_ 291. M - N Raspberry w/B.W. Ext. Twisted Stem Compote - Pretty & Scarce
- \_\_\_\_\_ 292. B - Peacock Tail Ruffle Compote - Don't See Many
- \_\_\_\_\_ 293. P - Dugan Holly and Berry Sauce Boat or Nappy - Scarce Color
- \_\_\_\_\_ 294. I.G. - N Drapery Vase 8" - Very Pretty
- \_\_\_\_\_ 295. Teal - 9" Imperial Flute Vase - Beautiful Radium
- \_\_\_\_\_ 296. M - 9" Round FTD. Little Fishes Bowl - Radium & Scarce
- \_\_\_\_\_ 297. Pastel A.O. - Spat. FTD. 3 Fruits Medallion Bowl - Great Pastel - Heat Check in Ft.
- \_\_\_\_\_ 298. M - 9¼" Ruffled Rays & Ribbons Mlbg. Bowl - Radium
- \_\_\_\_\_ 299. A - 9¼" Fenton 12 Sided 3 Fruits Plate - Lots of Pinks
- \_\_\_\_\_ 300. B - N FTD. Peacock at Fountain Orange Bowl - Super Multi - Flares Out
- \_\_\_\_\_ 301. A - N Singing Birds Mug - Very Pretty Example
- \_\_\_\_\_ 302. Amber - 9" Imperial Open Rose Plate - Great Pink & Golds
- \_\_\_\_\_ 303. G - 10" N Leaf Columns Vase - Super Pretty Radium - Peeling on Top
- \_\_\_\_\_ 304. G - 9½" Rose Shew Plate - Rare Beautiful Pinks and Blues



- \_\_\_\_\_ 305. M - Mlbg. 6" - 6 Ruffle 12 Scollop Clover Center VT. Grape Wreath Bowl - Super
- \_\_\_\_\_ 306. M - Mlbg. 6 1/4" - 6 Ruffle Grape Wreath Bowl - Super Satin
- \_\_\_\_\_ 307. M - 6 1/2" Flat Imp. Grape Plate - Super Example - One of the Best
- \_\_\_\_\_ 308. P - N Bushel Basket
- \_\_\_\_\_ 309. Celest. Blue - Concave Dia. Tumbler w/Coaster - Great Find
- \_\_\_\_\_ 310. M - 5 1/2" - 8 Ruffle Australian Emu Bowl - Hot Item - Australian Carnival
- \_\_\_\_\_ 311. M - Waterlily & Cattail Whimsy Toothpick Vase
- \_\_\_\_\_ 312. B.A. - 9 1/4" Deep 16 Ruffle Australian Swan Bowl - Radium & Rare
- \_\_\_\_\_ 313. M - 9 1/2" - 6 Ruffle Magpie Australian Bowl
- \_\_\_\_\_ 314. M - 9 1/2" - 12 Ruffle Australian Kingfisher Bowl - R #4184
- \_\_\_\_\_ 315. M - 9" - 8 Ruffle Bowl - Lettered Interior Saying Australian Kookaburra - Same Bird as Kingfisher - Rare Bowl
- \_\_\_\_\_ 316. M - Australian Butterfly Bush VT. Compote - Radium - 7 1/4" Round
- \_\_\_\_\_ 317. Red - 1982 Frolicking Bears I.C.G.A. Spittoon
- \_\_\_\_\_ 318. Purple - Super Contemporary Spittoon - Pattern Not Known
- \_\_\_\_\_ 319. Amber - 9 1/4" A.C. G.A. Courthouse Plate - July 26, 1974
- \_\_\_\_\_ 320. Emerald G. - 8 3/4" N Stippled Rib Bk. Grape and Cable Plate - Super
- \_\_\_\_\_ 321. M - 9 1/2" Fenton Holly Plate - Pumpkin Pink-Gold & Gr. Irid. - The Best
- \_\_\_\_\_ 322. B.O. - 8 3/4" Ruffle Rose Show Bowl - Not Irid. - Very Scarce
- \_\_\_\_\_ 323. B.O. - 8 3/4" Ruffle Fenton Imperial Grape Bowl - Not Irid. - Rare Pattern
- \_\_\_\_\_ 324. P.O. - 9 1/2" Dugan Collar Base 6 Ruffle Cherries Bowl - Scarce Shape
- \_\_\_\_\_ 325. M - 9" Super Radium Beauty Imperial Pansy Bowl
- \_\_\_\_\_ 326. Pastel Powder Blue Base - Ruffle, Open Edge Basket - Scarce Color
- \_\_\_\_\_ 327. P - Westmoreland Prisms Little Compote - Great Find
- \_\_\_\_\_ 328. W - 9 1/4" Lined Lattice Vase - Pinks and Blues - Nice Item
- \_\_\_\_\_ 329. P - 6 1/4" Squatty Diamond Points Vase N - 5" Top - 3 1/2" Base
- \_\_\_\_\_ 330. P - 11" Tree Trunk Vase - Multi Radium Beauty - Smooth Base
- \_\_\_\_\_ 331. B - Spat. FTD. Stippled Three Fruits Medallion Bowl - Super Elec.
- \_\_\_\_\_ 332. M - 6 Ruffle Concord Bowl - Super Green, Pinks & Golds - Tops
- \_\_\_\_\_ 333. Pastel Butterscotch - Hyacinth Gone With Wind Lamp Base - Super, Pretty & Rare
- \_\_\_\_\_ 334. B - 14 3/4" Mlbg. Hobnail VT. Vase - Rare Color
- \_\_\_\_\_ 335. IB - Dandelion Knight Templar Mug - Pittsburgh 1915
- \_\_\_\_\_ 336. Oxblood - Fisherman's Mug - Could be the Best Irid. Around
- \_\_\_\_\_ 337. Lav. A - Great 9" Peacocks Rib Back Plate - Beautiful
- \_\_\_\_\_ 338. A - 12 1/2" N Mid Size Thin Rib Funeral Vase - Super - Factory Int. Bruise
- \_\_\_\_\_ 339. B - 9" Flat Dugan Fanciful Plate - Pinks, Blues Hi-lites - Scarce Color
- \_\_\_\_\_ 340. M - 9" Pumpkin Peacocks Rib Back Plate - Super Pinks, Blues & Golds
- \_\_\_\_\_ 341. M - Super Pinks & Blues - N Grape & Cable Cracker Jar - Super Matching
- \_\_\_\_\_ 342. A - N Acorn Burrs Berry Bowl - Super Irid.
- \_\_\_\_\_ 343. A - 5" Round Little Flower Deep Berry Bowl
- \_\_\_\_\_ 344. M - 6" Persian Medallion Plate - Orange Tree Ext. - Super Dark
- \_\_\_\_\_ 345. P - 4 1/2" Imperial Grape, 1-Handle Nappy - Cutie
- \_\_\_\_\_ 346. Imperial - 1st Day of Christmas Plate - 2nd Day - 3rd & 6th Day - Choice

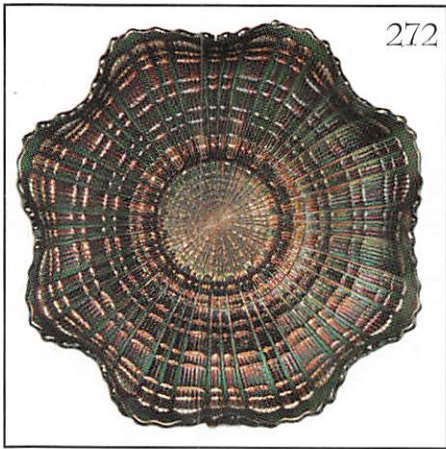
**APPROXIMATELY 100  
UNNUMBERED PIECES  
SOLD AT END OF AUCTION**

**THANK YOU**  
**WE APPRECIATE YOUR BUSINESS!**  
**BOTH BUYER AND SELLER**

**Give me a call when you're ready for your auction. Successful Auctions don't happen, they must be planned. Booking 1998 now as you read. Make reservations now for the 7th Annual New Year's Extravaganza Saturday, January 3, 1998.**

Respectfully

*Mickey Reichel*



272



321



201



271



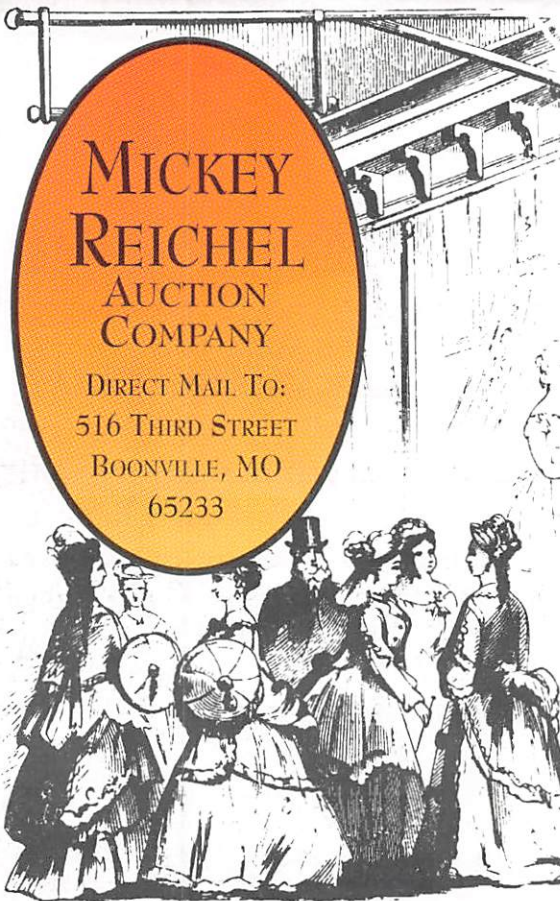
341



274



248



**MICKEY  
REICHEL  
AUCTION  
COMPANY**

DIRECT MAIL TO:  
516 THIRD STREET  
BOONVILLE, MO  
65233



First Class Mail



"EXCITEMENT BUILDS AS THE CROWD GATHERS AT THE MICKEY REICHEL AUCTION COMPANY!"

91978-1581 47