

# Bruce & Gladys Irish CARNIVAL GLASS AUCTION

**Saturday, October 4, 1997 - 10:00 A.M.**

*(Preview begins at 8:30 A.M.)*

★ **LAPEER, MICHIGAN** ★

*Lapeer County Center Bldg.  
at 425 County Center St.*



*After collecting Carnival Glass for much of their lives, Bruce & Gladys have retired and want to travel. As a result they will sell their entire collection to the Highest Bidders by Public Auction. Only 12 pieces have been consigned to this beautiful collection. Bruce & Gladys have an eye for iridescence and the overall iridescence on this collection is excellent!*

**Directions:** Take I-69 to M-24 (Exit #155) Go Approx. 2 Miles North on M-24 to Genesee St. (M-21), Go 2 Blocks East to Bentley St., South on Bentley - Follow Signs). Lapeer is Approx. 55 Miles North of Detroit or 25 Miles East of Flint. From the South take I-75 N. To U.S. 23 to Flint, MI get off at I-69 East Approx. 25 Miles to M-24/Lapeer Exit #155.

**Hotel Arrangements:** Lapeer Best Western (810) 667-9444 (\$55) Make Arrangements ASAP & mention the Auction. We will lose our Room Block if rooms are not rented soon enough. If you are not able to reserve a room in time, call us for listing of other Motels in the area.



---

**Preview Videos \$15.00 (Includes Shipping & Price Report)**

---

**Preview Video:** Available at a cost of only \$15. The Video is approx. 45 min. long w/ descriptions of each item. Every Lot of Glass will be on this Video to assist you w/ Absentee Bids or to use as a learning tool. Call us today and we will send the Video by Priority Mail Immediately. We have sold hundreds of videos and have had Very Positive response and hope that you will like it as well.

**Absentee Bids:** There is no buyer's premium on absentee bids, and your bids are entered competitively - just as if you were in the crowd. The only costs will be postage, insurance and packing (Please note: to get the glass out ASAP we will hire experienced help, so packing charge will be slightly higher than when Gary did most of it himself). Successful bidders will be notified in 1 to 3 days by the Auctioneer (so be sure to include your phone # and best hours to be reached). Mail bids to Albrecht Auction, 3884 Saginaw Rd., Vassar, MI 48768 or **Fax Bids to:** (517) 823-2543 (24 hours). Please send/fax bids **ASAP** and no later than Wednesday, October 1. Please include shipping address w/ Absentee Bids! Items are in Perfect Condition w/ Average or Above Iridescence or so listed in Catalog. Bids will not be carried out when damage has been found during the Auction.

**Price Reports:** Send SASE & \$2.00 to 3884 Saginaw Rd., Vassar, MI 48768 for complete Post-Auction Price Results.

**Terms:** Cash or Michigan Check accepted w/ proper I.D. If you are not on our Mailing List, Out of State Checks must be approved by Albrecht Auction in advance unless known by Auctioneers, otherwise glass will be held until check clears. Non-U.S. Checks must be written 'In U.S. Funds'.

**Auctioneers & Bid Spotters:** Dave & Herb Albrecht, Virg Albrecht, John Gunden.

**Carnival Glass Consultant:** Special thanks to Bob Gallo of Waterford, Mich. who had worked w/ Gary in the past on Cataloging and has continued to help us as a much appreciated Carnival Glass Expert!

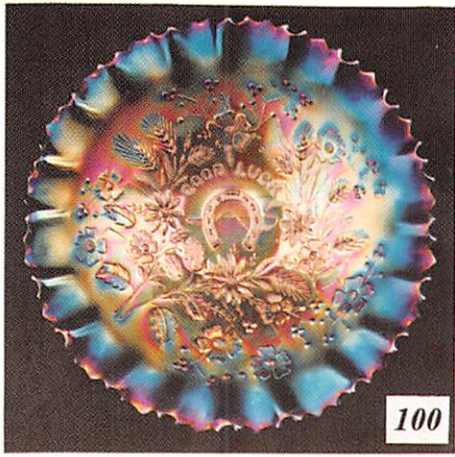


**AUCTIONEERS / BROKER**  
**MEMBER MICH. & NATIONAL**  
**AUCTIONEER'S ASSOC.**



**PHONE: 517-823-8835**  
**3884 W. SAGINAW ROAD**  
**VASSAR, MI 48768**



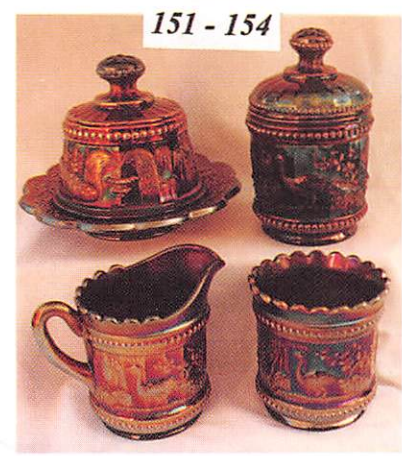


- \_\_\_\_\_ 1 **Wishbone** Ftd. Bowl- M- N.W. (Beaut. Color- Almost Pumpkin)  
 \_\_\_\_\_ 2 Vintage Fernery- G- F.  
 \_\_\_\_\_ 3 Vintage 8" Bowl- A- F.  
 \_\_\_\_\_ 4 Fruits & Flowers 7 1/2" Plate w/ B.W. Back- A.  
 \_\_\_\_\_ 5 Scroll Embossed Bowl- Pu- Imp. (Near Elec. Ir.- Gorgeous)  
 \_\_\_\_\_ 6 Tree Trunk 8" Vase- G.  
 \_\_\_\_\_ 7 Grape Delight Rose Bowl- A.  
 \_\_\_\_\_ 8 Wide Rib 10" Vase-A.  
 \_\_\_\_\_ 9 Wreath Of Roses Compote- A- F.  
 \_\_\_\_\_ 10 **HEARTS & FLOWERS BOWL w/ P.C.E.- I.B.** (On Scarce Side).  
 \_\_\_\_\_ 11 Wreath Of Roses Compote- M- F.  
 \_\_\_\_\_ 12 Windflower 8 1/2" Bowl- M- Du.  
 \_\_\_\_\_ 13 Wide Panel 15" Cake Plate- M.  
 \_\_\_\_\_ 14 Wide Panel 3 Pc Console Set- M.  
 \_\_\_\_\_ 15 **Rays & Ribbon** Bowl- A. (Nice Ex. of Mb. Satin)  
 \_\_\_\_\_ 16 Morning Glory 7 1/2" Vase- Smoke.  
 \_\_\_\_\_ 17 Wreath Of Roses Rose Bowl- M- Du.  
 \_\_\_\_\_ 18 Wild Rose Open Edge Nut Dish- G- N.W.  
 \_\_\_\_\_ 19 Morning Glory 7" Vase- Smoke.  
 \_\_\_\_\_ 20 **Tornado Vase**, 6 1/2", Am (Avg.Ir./ little silvery on bottom).  
 \_\_\_\_\_ 21 **Grape & Cable** 7 Pc. Berry Set- Pu. (Good Color)  
 \_\_\_\_\_ 22 Spiralex 10" Vase- P.O.  
 \_\_\_\_\_ 23 **HEARTS & FLOWERS BOWL w/ P.C.E.- I.G.- N.W.** (minute flake on edge- On Rare Side).  
 \_\_\_\_\_ 24 **HEARTS & FLOWERS RUF. BOWL- I.B.**  
 \_\_\_\_\_ 25 **Wreathed Cherry** 3 Pc. Berry Set- A. (One of Better Ones- Good Detail & Irid.)  
 \_\_\_\_\_ 26 Vintage 7" Bowl- G- F.  
 \_\_\_\_\_ 27 Vintage Fernery- M- F.  
 \_\_\_\_\_ 28 Vintage Fernery- B- F.  
 \_\_\_\_\_ 29 **TREE TRUNK 9" VASE- B.** (Exc. Color)  
 \_\_\_\_\_ 30 **4 Pc. Octagon Table Set- M- Imp.** (Exc. Color)  
 \_\_\_\_\_ 31 Vintage Compote- A- F.  
 \_\_\_\_\_ 32 Vintage Cake Plate- M.  
 \_\_\_\_\_ 33 Morning Glory 6 1/2" Flared Top Vase- G.  
 \_\_\_\_\_ 34 **Grape & Cable** Sweetmeat w/ Lid- A.  
 \_\_\_\_\_ 35 Orange Tree Ruf. Bowl- W. (Good White)  
 \_\_\_\_\_ 36 **Strawberry Wreath** Ruf. Bowl- Pu- Mb. (Rad. Ir.)  
 \_\_\_\_\_ 37 **Tiger Lily** 7 Pc. Water Set- M- Imp. (Great Set).  
 \_\_\_\_\_ 38 Tiger Lily Tumbler- M- Imp.  
 \_\_\_\_\_ 39 **Three Fruits** Stemmed Bon Bon- M.  
 \_\_\_\_\_ 40 **GRAPE & CABLE HATPIN HOLDER- Pu.** (Little Silvery)  
 \_\_\_\_\_ 41 Scarab Hatpin- Dark.  
 \_\_\_\_\_ 42 **Three Fruit Plates**, B.W. Back- A- N.W. (Slight Wear On Fruit)  
 \_\_\_\_\_ 43 **Three Fruits** 9" Bowl, B.W. Back- A- N.W. (Nice Even Ir.)  
 \_\_\_\_\_ 44 **Thistle** 10" Bowl- B- F. (Beaut. Color)  
 \_\_\_\_\_ 45 **HOLLY 9" RUF. BOWL- Deep, Deep RED.** (Good Bl. & Gr. Ir.)  
 \_\_\_\_\_ 46 **Holly** 9" Bowl- G. (One of Prettier in this Color)  
 \_\_\_\_\_ 47 Stippled Rays 8" Bowl- A- N.W.  
 \_\_\_\_\_ 48 Star & File Bowl- M.  
 \_\_\_\_\_ 49 Ski Star Tri Corner Bowl- P.O. (Nice)  
 \_\_\_\_\_ 50 **TROUT AND FLY 8" BOWL- A- Mb.** (Avg. Radium Ir.)  
 \_\_\_\_\_ 51 **Peacocks** Bowl w/P.C.E.- M. (Beautiful Ir.)  
 \_\_\_\_\_ 52 **Peacocks** Ruf. Bowl w/ Rib Back- Am- N.W. (Super Irid.).  
 \_\_\_\_\_ 53 Scotch Thistle Compote- Pu. (Crimped- Beaut. Example)  
 \_\_\_\_\_ 54 (6) Star Med. Tumblers- M. (5x\$ - 1 Free)  
 \_\_\_\_\_ 55 **HOLLY SPRIG TRI CORNER NAPPY- G- Mb.** (Rare Shape)  
 \_\_\_\_\_ 56 Stippled Rays 7" Plate- M- F.  
 \_\_\_\_\_ 57 Free Fold 11" Vase- Pu.  
 \_\_\_\_\_ 58 Stork and Rushes Hat- A- Du.  
 \_\_\_\_\_ 59 Sun Flower Bowl- A. (Nice Example)  
 \_\_\_\_\_ 60 **GRAPE & CABLE 7 PC. WATER SET- A.** (Beaut. Color)  
 \_\_\_\_\_ 61 **Seacoast** Pintray- A. (Chip Underneath)  
 \_\_\_\_\_ 62 **Sunflower** Pintray- A. (Chip Underneath)  
 \_\_\_\_\_ 63 Storks ABC Childs Plate- M.  
 \_\_\_\_\_ 64 Shell & Jewel Cream & Cov. Sugar- M- Westm.  
 \_\_\_\_\_ 65 **DAISY & DRAPE VASE- I.G.** (Rare- Good Pc.)  
 \_\_\_\_\_ 66 Peaches & Pears Banana Bowl- M.  
 \_\_\_\_\_ 67 Shell & Jewel Creamer & Sugar- G.  
 \_\_\_\_\_ 68 Stippled Rays Compote- G- N.W.  
 \_\_\_\_\_ 69 Strawberry Bon Bon- B- F.  
 \_\_\_\_\_ 70 **WHIRLING LEAVES BOWL- A- Mb.** (Radium- Beaut. Gold on Leaves, Exc., Exc. Ir.)  
 \_\_\_\_\_ 71 **TREE TRUNK 13 1/2" x 4 1/2"b. MID-SIZE VASE- G.**  
 \_\_\_\_\_ 72 **HANGING CHERRY COVERED BUTTER DISH- M.** (Good Color)  
 \_\_\_\_\_ 73 Star Med. Milk Pitcher- Smoke. (Good Color- One of Imp. Better PCS.)  
 \_\_\_\_\_ 74 Stippled Rays 5" Bowl- G- F.  
 \_\_\_\_\_ 75 **Peacock & Urn** Stippled Master I.C.- B. (Silvery)  
 \_\_\_\_\_ 76 (4) **Peacock & Urn** Stippled I.C. Bowls- B. (2 Great Color- 4 x \$).  
 \_\_\_\_\_ 77 Peacock & Urn Compote, Goblet Shape- M.  
 \_\_\_\_\_ 78 Peacock & Urn Compote- M.  
 \_\_\_\_\_ 79 **STAR & FAN DECANter** w/Stopper- M- English- Scarce.  
 \_\_\_\_\_ 80 **ORANGE TREE MUG- G.** (Tough Color)  
 \_\_\_\_\_ 81 **Orange Tree** Ruf. Bowl- B. (Very Good Ir.-Beautiful Bowl)  
 \_\_\_\_\_ 82 **ORANGE TREE COV. BUTTER DISH- M.** (Beautiful- One of Better Bob has seen)  
 \_\_\_\_\_ 83 Four Pillars 11" Vase- A.O. (foot chip)  
 \_\_\_\_\_ 84 **GRAPE & CABLE STIP. BOWL w/ P.C.E.- Pumpkin.** (Beautiful- Stunning)  
 \_\_\_\_\_ 85 **FARMYARD BOWL w/ 3 IN 1 EDGE- A.** (Top of the Line- Superior Ir.- Scarce Shape).  
 \_\_\_\_\_ 86 **Tree Trunk** 13" x 4 3/4"b. Mid-size Vase- B. (Beaut. Blue).

- 87 Sailboats 6" Bowl- B. (Exc. Example- Good Color)  
 88 Scroll Embossed Compote w/Eastern Star Ext.- M.  
 89 Stippled Rays 7" Bonbon- A- N.W.  
 90 **ORANGE TREE I.C.S. BOWL-** G. (Hard Color & Great Ir.)  
 91 **HOBSTAR COV. BUTTER DISH-** G. (chip on base under lid)  
 92 **HOBSTAR COV. SUGAR-** G.  
 93 **HOBSTAR CREAMER-** G. (mfg. sliver chips on rim)  
 94 **HOBSTAR SPOONER-** G.  
 95 Flute 11" Vase- G- N.W.  
 96 2 Cut Leaves & Flowers Lamp Shades- M- Imp. (2 x \$)  
 97 Four Flowers 8 Ruf. 9 1/2" Bowl- Peach Opal- Du.  
 98 **Victorian 6-Ruf. 11" Bowl- Pu- Du.**(Rare- Avg. Ir.)  
 99 **POPPY SHOW PLATE- B-** N.W. (Prettiest One Bob has Seen- A Beauty- has small no harm chip on back edge)  
 100 **GOOD LUCK BOWL w/ PCE & Rib Back-** B- N.W. (Almost Elec. Ir.)  
 101 **Good Luck Bowl w/ PCE, Bsktwv. Ext.- A.** (Good Even Ir.)  
 102 **Good Luck Ruf. Bowl, B.W. Ext.-A.**(Nice Even Ir.)  
 103 **Good Luck Ruf. Bowl w/Rib Back-** M.  
 104 **GOOD LUCK RUF. BOWL- A.O.-** N.W. (Good Ir.- Rare- tiny mfg. bubbles in glass)  
 105 **KITTENS CUP- B- F.** (Good Detail on Kittens- Nice- On The Rare Side)  
 106 **Kittens Toothpick-** M. (Pretty Ir.-Better than most!).  
 107 **Blackberry Wreath 6" Ruf. Bowl- A.** (Radium Ir.)  
 108 **Blackberry Wreath 6" Bowl- M- Mb.** (Tightly Crimped Edge- Radium)  
 109 **Bushel Basket, Butterscotch Effect-** A.O.  
 110 **ACORN BURRS 8 PC. PUNCH SET- W- N.W.,** Exc. Pink & Bl. Irid. (Ext. Rare- Few Known or Sold- One of the Best- (2) cups Exc. Ir., (4) have Delicate Ir.)  
 111 **Acorn Burrs 4 Pc. Berry Set- A.**  
 112 **Acorn Burrs 5" Berry Bowls- G.** (3 x \$)  
 113 **Star & File Celery-** M- Imp.  
 114 **Stork and Rushed Hat-** M.  
 115 **6" Vase w/ Flared Top,** M.  
 116 **Stippled Rays Stemmed Rose Bowl-** G.  
 117 **Stippled Rays 9" Bowl- A- N.W.**  
 118 **Daisy & Plume Ftd. Candy Dish-** A.  
 119 **Rustic 14 1/2" Mid-size Vase-** M. (4" Base)  
 120 **OCTAGON COVERED SUGAR-** Teal Bottom/ Green Top. (Rare Color)  
 121 **Rustic 9" Vase-** A.  
 122 **Ripple 8" Flared Top Vase-** Pu.  
 123 **Raspberry Tumbler-** A.  
 124 **TREE TRUNK 13 1/2" x 4 3/4"b. MID-SIZE VASE-** B. (Beaut. Blue).  
 125 **GRAPE & CABLE 12 PC. PUNCH SET, MASTER SIZE-** A. (Super, Super Pc.- Int. & Ext. Stunning- One of better Masters)  
 126 **Grape & Cable Punch Cup-** P.  
 127 **Question Marks Bonbon-** A- Du.  
 128 **Question Marks Bonbon-** M- Du.  
 129 **Peacock & Urn Compote-** M.  
 130 **WHIRLING LEAVES TRI-CORNER BOWL** w/ P.C.E.- M. (Radium- Beaut. Ir.- Rare Shape).  
 131 **Persian Med. 6 1/4" Plate-** M. (Beautiful Ex.)  
 132 **Persian Med. Bon Bon-** B- F. (Silvery Ir.)  
 133 **Petals & Fans Sm. Ruf. Bowl-** P.O.  
 134 **Propeller Compote-** M- Imp.  
 135 **Scroll Embossed Plate-** Pu. (Nice)  
 136 **Peacock at the Fountain Tumbler-** B.  
 137 **Panther Ftd. 5" Bowl-** Smoky Blue- F.  
 138 **Peacock & Urn Bowl-** M- F. (Exc. Color- One of Prettier Ones)  
 139 **Poinsettia Milk Pitcher-** M.  
 140 **ORANGE TREE LOVING CUP-** G (Tough Col.).  
 141 **Orange Tree Loving Cup-** B. (pinhead on handle)  
 142 **Orange Tree Loving Cup-** M- F. (check in handle)  
 143 **Peacock Tail Bowl-** G.  
 144 **Peacock at Fountain Spooner-** A. (Good Avg. Color)  
 145 **HOLLY RUF. BOWL- RED-** F. (sm. undetectable repair on pt. & tiny chigger on edge)  
 146 **Holly JIP Hat, Tight Crimp- Red** (rghns. on bottom- small chip)  
 147 **Premium Pr. 9" Candle Sticks-** M.  
 148 **Persian Med. 9" Deep IC Shape Bowl-** B.  
 149 **Peacock & Grape 9" Bowl-** M.  
 150 **GRAPE & CABLE Sm. PUNCH BOWL w/Base-** Pu. (Nice Bl. Ir.)  
 151 **GRAPE & CABLE COV. BUTTER DISH-** A.  
 152 **GRAPE & CABLE SUGAR-** A.  
 153 **GRAPE & CABLE CREAMER-** A.  
 154 **GRAPE & CABLE SPOONER-** A.  
 155 **Rays & Ribbons Bowl-** A- Mb. (Beautiful Ex. of Rad. Ir.)  
 156 **Maple Leaf Compote & Berry Dish-** M. (4 x \$)  
 157 **Peacock & Grape Bowl-** A.  
 158 **Peacock & Grape Bowl-** G.  
 159 **Twins Fruit Bowl w/ Base-** M.  
 160 **GRAPE & CABLE LARGE COMPOTE-** Pu. (Beautiful- Absolutely Gorgeous- One of Best We've Seen)  
 161 **Pansy Cream & Sugar-** M.  
 162 **Pulled Loop 10" Vase-** M.  
 163 **Peacock & Grape 9" Bowl-** M. (Good Color)  
 164 **Persian Med. Bon Bon-** B.  
 165 **Waterlily 10" Ftd. Bowl-** M. (Great Ir.)  
 166 **Persian Med. Compote-** B.  
 167 **Octagon Decanter w/Dia. & Sunburst Stopper-** M- Imp.  
 168 **Lustre Rose Bowl-** M.  
 169 **Lustre Rose Cov. Butter Dish-** M.


- \_\_\_ 170 **PEACOCKS RUF. BOWL-** A.O. (Nice Example of N.W. Aq. Op!)  
 \_\_\_ 171 **Stag & Holly Bowl-** B. (Nice Even Ir.)  
 \_\_\_ 172 Orange Tree Sm. Compote- M. (Exc. Color)  
 \_\_\_ 173 Orange Tree Ruf. Bowl- B- F. (Nice Even Ir.)  
 \_\_\_ 174 Orange Tree 10" Bowl- M. (Good Even Color)  
 \_\_\_ 175 **PR. CRUCIFIX CANDLE STICKS-** M. (Very Rare Set- Beaut. Ir.)  
 \_\_\_ 176 Rustic Vase- M- 16" x 4" Base.  
 \_\_\_ 177 Rustic 17 1/2" Mid-size Vase, 4" Base- B. (has pinhead)  
 \_\_\_ 178 Rustic 12" Vase- W.  
 \_\_\_ 179 Ripple 12" Vase- G.  
 \_\_\_ 180 **Peacock Small Berry Bowl-** A- Mb.  
 \_\_\_ 181 Fashion Water Pitcher- M.  
 \_\_\_ 182 Beaded Shell Mug- A.  
 \_\_\_ 183 12" JIP Vase- M.  
 \_\_\_ 184 Starfish Compote- P.O.  
 \_\_\_ 185 **THREE FRUITS Stippled Spat. Ftd. Bowl** w/Meander Ext.- A.O.- N.W. (small chip inside one foot & 2 pts. chipped)  
 \_\_\_ 186 Orange Tree Rose Bowl- M.  
 \_\_\_ 187 Lustre 11" Rose Bowl- Smoke- F.  
 \_\_\_ 188 Lustre Rose 7 Pc. Berry Set- M.  
 \_\_\_ 189 Lotus & Grape Bowl- M. (Beaut. Ir.- Great Color)  
 \_\_\_ 190 **GRAPE & CABLE COV. COMPOTE-** Pu. (Tough to Find- Beaut. Example)  
 \_\_\_ 191 **GRAPE & CABLE CENTERPIECE BOWL-** Pu. (Beaut. Ir. w/Gold Highlights)  
 \_\_\_ 192 **GRAPE & CABLE HUMIDOR** w/ Lid- Pu. (Exc. Color).  
 \_\_\_ 193 Tree Bark Cov. Pitcher w/ 6 Tumblers- M.  
 \_\_\_ 194 Long Thumbprint 7 1/2" Vase- M.  
 \_\_\_ 195 **GRAPE & CABLE 7 PC. WATER SET-** A. (Beaut. Ir.)  
 \_\_\_ 196 Lotus & Grape Bonbon- B.  
 \_\_\_ 197 Lustre & Clear Fan Vase- M.  
 \_\_\_ 198 Long Hobstar Lg. Bowl- M.  
 \_\_\_ 199 Little Flowers Deep Round I.C. Bowl- M. (Almost Radium Finish)  
 \_\_\_ 200 **Hobstar 4 Pc. Table Set-** M.  
 \_\_\_ 201 **Peacock at the Fountain** Cov. Butter Dish- A. (Super Pc.)  
 \_\_\_ 202 **Peacock at the Fountain** Cov. Sugar- A. (chip inside collar on cover- Exc. Ir.)  
 \_\_\_ 203 **Peacock at the Fountain** Creamer- A. (Exc. Color)  
 \_\_\_ 204 **Peacock at the Fountain** Spooner- A. (Exc. Ir.)  
 \_\_\_ 205 **Grape Wreath Square** 10" Bowl, Star. & Bar Int.- M. (Radium Ir.- Rare Shape)  
 \_\_\_ 206 Rustic 9" Vase- M.  
 \_\_\_ 207 Holly Plate- W (Usual Fenton Ir.)  
 \_\_\_ 208 Grape & Cable 7 Pc. Berry Set- P.  
 \_\_\_ 209 Raindrops Dome Base 'Rose' Bowl- P.O. Du (Diff. Shape, Crimped Edge Turned Up 4" off Table).  
 \_\_\_ 210 **ORANGE TREE 8 PC. PUNCH SET-** B. (Good Color- Nice Set)  
 \_\_\_ 211 Leaf & Beads Rose Bowl- A.  
 \_\_\_ 212 Leaf Chain 6 Ruf. Bowl- G.  
 \_\_\_ 213 Leaf Chain I.C. Shape Bowl- M.  
 \_\_\_ 214 Holly Hat Shaped Dish- B. (Good Ir.- Beaut. Blue)  
 \_\_\_ 215 **HORSES' HEADS FTD. NUT BOWL-** B.  
 \_\_\_ 216 Louisa Rose Bowl- G. (Silvery).  
 \_\_\_ 217 Hobstar & Arches Bowl- M.  
 \_\_\_ 218 Holly 9" Bowl- A.  
 \_\_\_ 219 Horses' Heads Rose Bowl- M- F (Nice Even Color).  
 \_\_\_ 220 **NEAR CUT TUMBLER,** Adv. Souvenir- M. (Beautiful)  
 \_\_\_ 221 Holly Hat w/ 4 Sides Up- M- F.  
 \_\_\_ 222 (4) Holly Goblets- M (4 x the money).  
 \_\_\_ 223 Holly Ruf. Hat- M.  
 \_\_\_ 224 Holly Bowl w/3 in 1 Edge- B.  
 \_\_\_ 225 **HEADDRESS BOWL W/COSMOS & CANE EXT.-** M. (U.S. Glass)  
 \_\_\_ 226 Holly Ruf. Bowl- W.  
 \_\_\_ 227 Holly Sprig Bon Bon- G- Mb.  
 \_\_\_ 228 Grape & Cable Candlestick- Pu.  
 \_\_\_ 229 Grape & Cable Cookie Jar w/Lid- Pu. (cracked)  
 \_\_\_ 230 Beaded Cable Rose Bowl- A.O.  
 \_\_\_ 231 Good Luck Bowl w/ PCE & B.W. Ext.- M (Beaut.Ir.)  
 \_\_\_ 232 Grape & Cable Cologne- Pu. (usual chips on stopper).  
 \_\_\_ 233 Grape & Cable Banana Boat- Pu. (Beaut. Color)  
 \_\_\_ 234 **Grape & Cable** Vt. 7" Ruf. Bowl, B.W. Back- G.  
 \_\_\_ 235 Lined Lattice 10" Vase- M- Du.  
 \_\_\_ 236 Grape & Cable Bowl, B.W. Back- A.  
 \_\_\_ 237 Wreathed Cherry 7 Pc. Berry Set- M- Du.  
 \_\_\_ 238 **Pony Bowl-** M- Du.  
 \_\_\_ 239 Butterfly & Fern 6 Pc. Water Set- M. (Pitcher has Beautiful Color & Ruf. Top, Tumblers Avg. Ir., 1 has sm base nick).  
 \_\_\_ 240 **GRAPE & CABLE OLD ROSE DISTILLERY ADV. PLATE-** G- N.W. (Rib Back)  
 \_\_\_ 241 Grape & Gothic Arches Creamer- B.  
 \_\_\_ 242 Grape Delight Nut Bowl- B. (Good Feet)  
 \_\_\_ 243 Heavy Grape Bowl- M. (Beaut. Ir.)  
 \_\_\_ 244 Butterfly & Berry 7 Pc. Water Set- M (Pitcher Cracked).  
 \_\_\_ 245 **Butterfly & Berry 7 Pc. Berry Set-** B.  
 \_\_\_ 246 Imperial Grape Bowl- Helios Gr. (slight sliver on edge)  
 \_\_\_ 247 Garland Rose Bowl- M. (Beaut. Color)  
 \_\_\_ 248 Heavy Grape 9" Bowl- M.  
 \_\_\_ 249 Heavy Grape 6" Bowl- G. (Beaut. Ir.)  
 \_\_\_ 250 **GRAPE & CABLE HATPIN HOLDER-** A. (Good Col.- mfg. flaw at top)  
 \_\_\_ 251 Grape Leaves 9" Bowl- M. (Exc. Color)  
 \_\_\_ 252 Vintage Fernery- M- F.  
 \_\_\_ 253 Grape Leaves 8 1/2" Bowl w/3 in 1 edge- M. (Pretty Color)  
 \_\_\_ 254 Imperial Grape Tumblers- M (2 x \$).  
 \_\_\_ 255 (4) Fashion Punch Cups- M. (4 x the money)

- 256 #474 Pitcher + 2 Tumblers- M. (Beautiful Set)  
 257 Free Fold 13" Vase- M.  
 258 474 9 Pc. Punch Set- M. (Beaut. Set)  
 259 Flute #3 Creamer & Open Sugar- Pu. (nick on  
 creamer & chip on sugar)  
 260 Fine Cut & Roses Rose Bowl- G. (Tough Color &  
 usual rghns. on feet)  
 261 Fine Cut & Roses Rose Bowl- M. (Beaut. Color &  
 Good Ft.)  
 262 Grape & Cable 9" Plate- A. (base nick under collar  
 base)  
 263 Grape & Cable 3 Pc. Berry Set- G.  
 264 Grape & Cable Sugar- G.  
 265 Grape & Cable Pr. Candlesticks- M. (2 x \$)  
 266 Fine Rib 11" Vase- M.  
 267 Imp. Grape Decanter w/out Stopper- A. (Exc. Elec.  
 Ir.)  
 268 **Imp. Grape Wine- A.**  
 269 Imp. Grape Decanter w/out Stopper- M. (Exc. Ir.)  
 270 (3) Imp. Grape Wines- M. (3 x \$).  
 271 Grape Decanter w/Stopper- G- Imp.  
 272 **Fashion 8 Pc. Punch Set- M. (Good Set)**  
 273 Diamond Lace Deep 8" Bowl- M.  
 274 Dragon & Lotus Spat. Ftd. Bowl- M.  
 275 Diamond & Rib 10" Vase- M.  
 276 Diamond Point 12" Vase- Lt. Grn. w/Mrg. overlay  
 on top 3".  
 277 Chrysanthemum I.C. Shape 10" Ftd. Bowl- M.  
 (Great Ir.)  
 278 Coin Dot Bowl- A.  
 279 Corinth Bowl- Pu.  
 280 Captive Rose Bowl w/3 in 1- G. (Good Color)  
 281 Captive Rose Ruf. Bowl- A.  
 282 Grape & Cable 7 Pc. Berry Set- P (Good Color).  
 283 **Enam. Cherries & Blossoms 7 Pc. Water Set- B.**  
 (Cannonball Pitcher)  
 284 **(6) Cherry Chain I.C.S. Sauce- M. (6 x \$).**  
 285 Hanging Cherries Cov. Butter Dish- M. (minor chip  
 under rim)  
 286 Curved Star? Compote- M.  
 287 Pr. Crackle 7" Candle Sticks- M.  
 288 Chrysanthemum Ruf. 10" Ftd. Bowl- M. (Exc.  
 Color- Beautiful Bowl)  
 289 Single Flowers Framed Tri-Corner Bowl- P.O.  
 290 Captive Rose Compote- M. (Odd Ruf. Shape)  
 291 Cherries Ftd. Bowl- A- Du.  
 292 Captive Rose Bowl w/3 in 1 Edge- G. (Little  
 silvery)  
 293 Corinth Banana Shape Bowl- Amber.  
 294 Blackberry Wreath Dish w/3 in 1 Edge- Pu.  
 (Radium Ir.- Nice Mb. Color)  
 295 Butterflies Bonbon- G. (chip at handle)  
 296 Beaded Bulls eye 10" Vase- Pu.  
 297 Vintage 5" Bowls- M. (2 x \$)  
 298 Butterfly & Berry 9" Vase- M- F.  
 299 Beaded Cable Candy Dish- G.  
 300 **Wild Rose Bowl- M- N.W. (Ext. Pattern Only)**  
 301 Corinth 5" Squatty Vase- P.O.  
 302 St. Clair 2 1/2" Flared Out Mini. Compote- Red.  
 303 Nugget Cruet w/Amber Handle- W.M.  
 304 Butterflies Bonbon- M. (Beaut. Mrg.)  
 305 Pony Bowl- M.  
 306 Grape Leaves Bowl- A. (Beaut. Color)  
 307 Blackberry Min. Compote- B.  
 308 Butterfly & Berry Cream & Sug. (no lid on sug.)- B.  
 309 Grape & Cable Ruf. 8" Bowl- Pastel M.  
 310 Three Fruits 9" P.C.E. Bowl, B.W. Back- Pu. (Good  
 Color, uneven pattern, epoxy on pt.)  
 311 Rustic 9" Vase- A.  
 312 Blackberry Mini. Compote- B. (Little Silvery)  
 313 Beauty 9 3/4" Bud Vase- M.  
 314 Beaded Basket- M.  
 315 Blackberry Spray Hat- M. (Exc. Color)  
 316 Blackberry Open Edge Hat- M.  
 317 Blackberry Spray Hat- A.  
 318 Bsktwv. Open Edge Basket w/2 Sides Up- Deep  
 Rich Mrg.  
 319 Beaded Shell Mug- A.  
 320 Butterfly & Berry 8 1/2" Vase- M.  
 321 Beaded Cable Ruf. Candy Dish- M.  
 322 Butterflies Bonbon- A.  
 323 Blackberry Bramble Compote- G. (Silvery)  
 324 April Showers 11" Vase w/ Peacock Tail Int.- A.  
 325 Acorn 7" Bowl- M.  
 326 Acorn 8" Ruf. Bowl- B.  
 327 Acorn Bowl- M.  
 328 Acanthus 8" Bowl- Smoke- Imp.  
 329 Feathered Serpent I.C.S. Bowl- G. (Beaut. Color)  
 330 Orange Tree Sugar Bowl- W. (chip on edge)  
 331 Orange Tree Bowl- M. (Nice even Color)  
 332 Wreath Of Roses Compote- G- F.  
 333 Memphis Punch Cup- M.  
 334 Memphis Punch Cup- A.  
 335 Floral & Grape Pitcher- Lt. M.  
 336 Feathered Serpent Bowl, Deep I.C. Shape- G. (Good  
 Color)  
 337 Fine Rib Vase- Russet/Olive Gr.  
 338 Feathers 7 1/2" Vase- M.  
 339 Diamond & Rib 10 1/2" Vase- A.  
 340 Feathered Serpent Bowl w/3 in 1 Edge- A.  
 341 Captive Rose Bowl W/C.R.E.- B.  
 342 Persian Med. Compote-B. (Nice Example)  
 343 Peacock Tail Dish- A.  
 344 Peacock Tail 7" Dish- M.  
 345 (2) Peacock Tail Dish- M (2 x \$).  
 346 Imp. Grape Compote- M- (sm. chip on edge).  
 347 Little Flowers Bowl- B. (Beautiful- Little Silvery)  
 348 Lotus & Grape Sm. Ftd. Bowl- M.  
 349 Two Flowers Ftd. 6" Bowl- M- F.  
 350 Orange Tree Stemmed Berry Dish- M.  
 351 Thin Rib 8" Vase- G- N.W.  
 352 Wreathed Cherry Tumbler- Pu- Du.  
 353 Pansy Oval Pickle Dish- Amber.  
 354 Persian Med. Sauce Bowl- G.



Albrecht Auction Service, Inc.  
3884 Saginaw Rd.  
Vassar, MI 48768

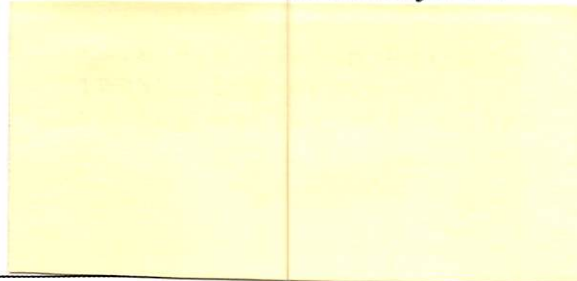
First Class Mail  
U.S. Postage  
**PAID**  
Vassar, MI  
Permit No. 43

 Call for Video and we'll mail it today!  
*Look inside for Color Photos!*

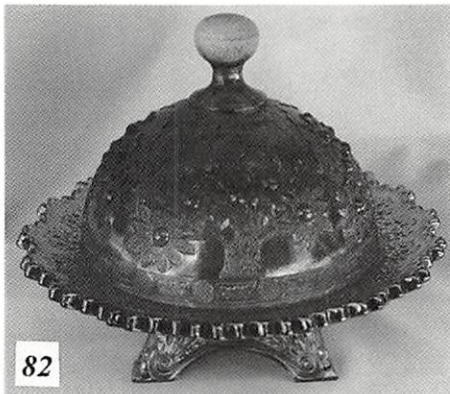


85

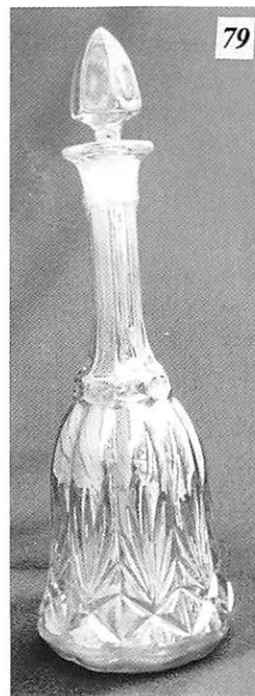
*A Personal Invitation for . . .*



*Carnival Glass Auction: Saturday - October 4, 1997*



82



79



225

Thinking of Selling? Please give us a call, whether it is One piece or an entire collection. Our Rates are reasonable, all brochure setup is done in-house and saves you \$\$\$\$. Preview Videos are done as a service and at no charge to the sellers. The Preview Videos attract a greater number of absentee bidders and an increase in prices. Our National Carnival Glass Mailing List is also available for all Auctions that merit National Attention. Bob Gallo assists us with all of our Carnival Glass Auctions and his knowledge of the glass ensures that your glass will be properly described and given proper attention to rarities.

\*\*\* We are considering a Spring Consignment Auction if enough interest is shown. Call or send your list in now to reserve space. \*\*\*