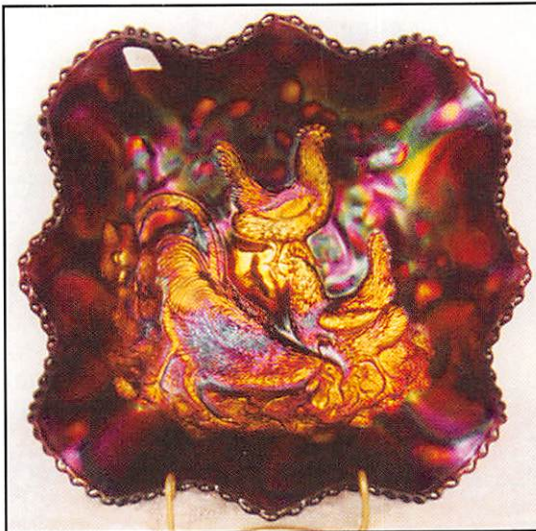


OUTSTANDING CARNIVAL GLASS

AUCTION

Richard and Carol Cinclair Collection

SATURDAY, SEPTEMBER 13, 1997 - 9:30 A.M.



Holiday Inn - Wentzville
900 Corporate Parkway, Wentzville, MO
(Exit 212a off of I-70)
Call (314) 327-7001 for reservations

JIM and JAN SEECK

Seeck Auctions

515-424-1116

SATURDAY, SEPTEMBER 13, 1997 -- 9:30 A.M.

Holiday Inn -- Wentzville, MO

Seeck auctions is pleased to be selling the Richard and Carol Cinclair collection from Texas. We've sold some wonderful collections before, but this might top them all. Richard and Carol have put together a collection of choice items from the prettiest pastels to electric blues, the darkest marigolds to the brightest greens, aqua opal to the best and don't forget their rare hatpins! This sale is so full of great glass that the body of the auction is top piece after top piece. No snoozing during this auction! Richard and Carol are not getting out of Carnival Glass, they are building a new home and plan to stay as active as ever and of course, start their second collection. This is one you do not want to miss!

Airport shuttle is available. Please make arrangements with the hotel.

PREVIEW: Friday, September 12th, 3:00 P.M. **NO BUYER'S PREMIUM.**

RESERVATIONS: Call (314) 327-7001 (Please ask for the Seeck Auction block of rooms)

WRITE-IN BID POLICY

1. Write-in bids will be accepted by sending the numbers of the item(s) desired and the amount bid on each to:
Seeck Auctions, PO Box 377, Mason City, Iowa 50402.
2. If known by Auction Company, bids may be done over the telephone. (515)424-1116.
3. There is a \$5 handling charge for each successful bid. Shipping and insurance charges are additional.
4. Bidders will be notified by phone if their bid(s) are successful. This call will be made 1 - 3 days after the auction.
5. Please have all bids in by Wednesday, Sept. 11th. All bids (by mail or phone) after this date may not be carried out.
6. **Please place bids in the following increments: \$1 to \$300 - \$5 increments \$300 up - \$25 increments.**
7. **If you do not receive an item that sold for less than your bid, assume we cancelled your bid because the piece of glass had below average color, manufacture problem, damage or was not listed correctly.**
8. To receive price lists send: \$20 -- for this auction and next 7 auctions
\$5 -- for only this auction or individual auction (please specify)

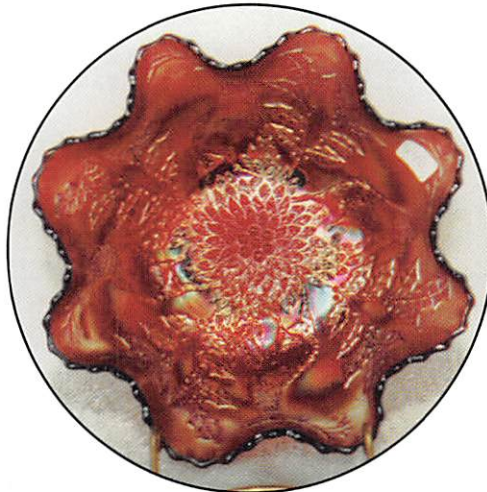
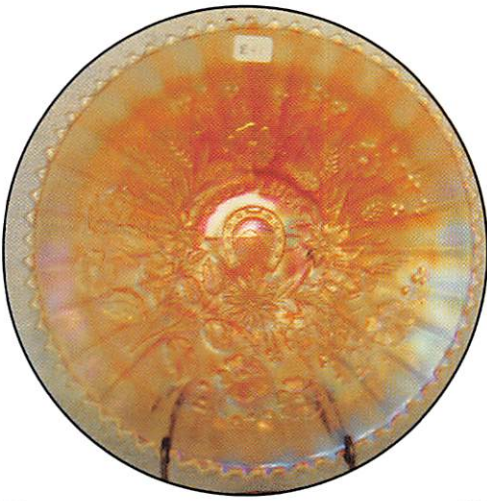
Send to the above address. (please allow 2 - 3 weeks delivery for price lists)

You may now email us with your write-in bids! Our email address is: seeckauction@willowtree.com

Continue to include the numbers of the item(s) you would like to bid on and amount bid on each, please include your telephone number.

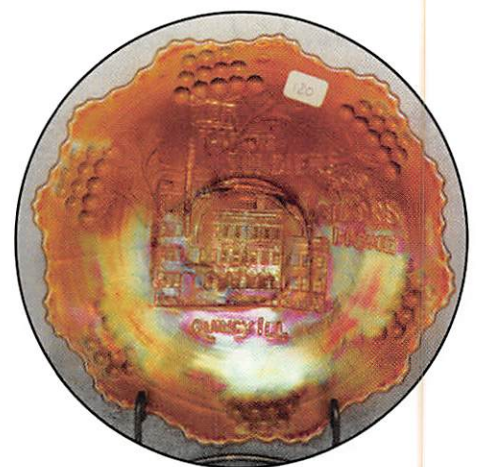
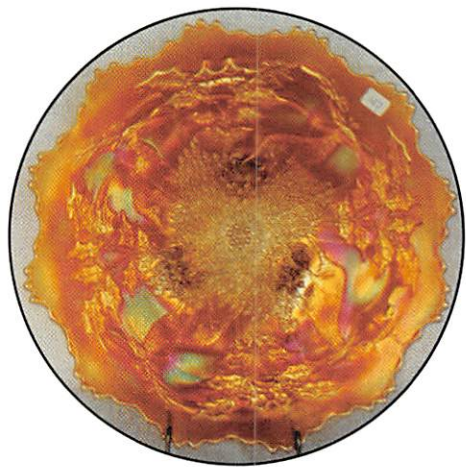
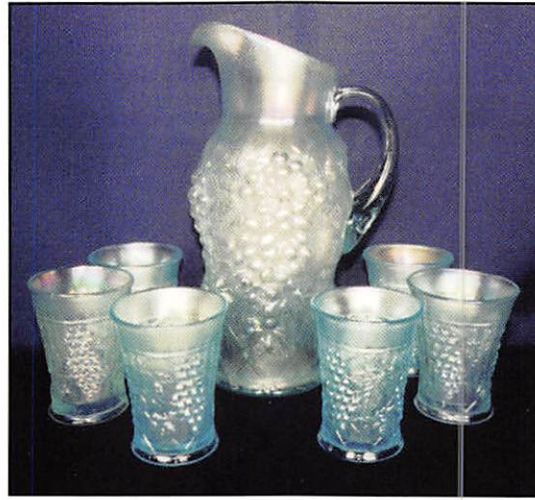
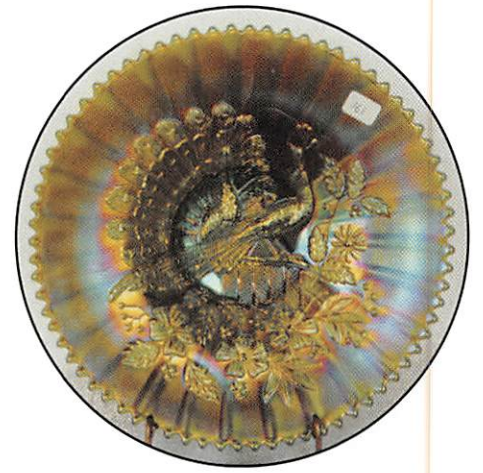
ALSO visit us at our website: <http://www.willowtree.com/~seeckauction>

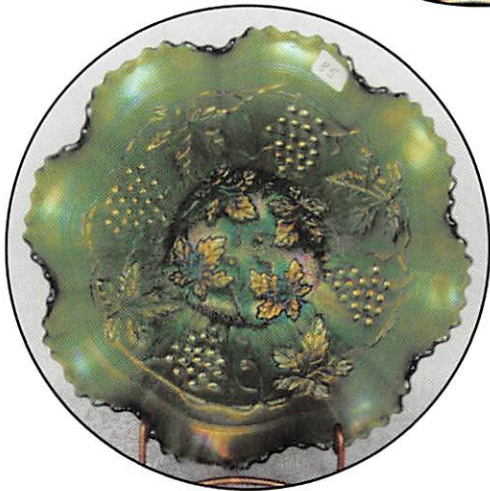
- | | |
|--|--|
| ___ 1. Halloween decanter, tray & 2 shot glasses - marigold - marked "Made in Czech" | ___ 23. Three Row Basketweave Open Edge IC shaped bowl - white - minor heat check in edge, scarce |
| ___ 2. Halloween crackle water pitcher - marigold | ___ 24. Leaf & Beads rosebowl - aqua opal - pastel & super |
| ___ 3. Halloween 7" vase - marigold | ___ 25. HEARTS & FLOWERS RUFFLED COMPOTE - MARIGOLD ON CUSTARD - FANTASTIC IRID. ON THIS EXTREMELY RARE PIECE, ONE OF THE TOP HEARTS & FLOWERS ITEMS, DON'T MISS IT! |
| ___ 4. Halloween tumble up - marigold | ___ 26. Double Loop chalice - purple - pretty |
| ___ 5. Halloween spittoon - marigold - very scarce & desired shape | ___ 27. Peacock & Grape ruffled bowl - red - cherry red color & pretty |
| ___ 6. Halloween spittoon shaped vase - marigold | ___ 28. Leaf Columns 6 1/2" squatty vase - ice blue - nice color & irid. on this scarce squatty size |
| ___ 7. Halloween perfume - marigold | ___ 29. Leaf Columns 6" squatty vase - white - very nice, scarce |
| ___ 8. Roll tumble up - marigold | ___ 30. FARMYARD SQUARE SHAPED RUFFLED BOWL - PURPLE - OUTSTANDING ELECTRIC IRID. ON THIS HIGHLY DESIRED & RARE PIECE, THE BEST FARMYARD THAT I HAVE EVER SOLD |
| ___ 9. Roll tumble up - smokey blue | ___ 31. Four Pillars 10" vase - aqua opal - nice |
| ___ 10. Fenton tumble up - marigold - etched | ___ 32. KITTENS CUP & SAUCER - BLUE - VERY RARE TO FIND W/SAUCER, NICE |
| ___ 11. Fenton tumble up - vaseline | ___ 33. Kittens cup & saucer - crystal - non iridized, never seen one before |
| ___ 12. Fenton tumble up - white | ___ 34. Thumbprint & Ovals vase - marigold - very scarce, pretty |
| ___ 13. Fenton tumble up - celeste blue | |
| ___ 14. Fenton tumble up - ice green | |
| ___ 15. Fenton tumble up - marigold | |
| ___ 16. Beehive honey pot - aqua blue | |
| ___ 17. Puss & Boots tumble up - clear | |
| ___ 18. 10" vase w/ruffled top - red stretch | |
| ___ 19. Rustic vase made into lamp w/metal base & cloth shade - green | |
| ___ 20. M'BURG BERNHEIMER BROTHERS MANY STARS RUFFLED BOWL - BLUE - OUTSTANDING W/SUPER BLUE COLOR & FANTASTIC IRID., VERY RARE PIECE OF GLASS! | |
| ___ 21. Three Row Basketweave Open Edge IC shaped bowl - ice green - pretty & scarce | |
| ___ 22. Three Row Basketweave Open Edge IC shaped bowl - ice blue - outstanding | |



- ___ 35. ROSE SHOW VARIANT 9" PLATE - MARIGOLD - SUPER PRETTY W/EVEN IRID., EXTREMELY RARE & DESIRABLE
- ___ 36. Grape & Cable whiskey decanter - marigold - very nice
- ___ 37. Grape & Cable shot glass - marigold - dark, nice
- ___ 38. Grape & Cable master IC bowl - ice green - fantastic irid. on this rare bowl
- ___ 39. Grape & Cable IC sauce - ice green - scarce, nice
- ___ 40. NORTHWOOD'S TOWN PUMP - GREEN - EXTREMELY RARE & HIGHLY DESIRABLE, A CARNIVAL CLASSIC
- ___ 41. NORTHWOOD'S TOWN PUMP - MARIGOLD - ALSO EXTREMELY RARE & SUPER
- ___ 42. Northwood's Town Pump - purple - as nice as they get, rare
- ___ 43. Oriental Poppy tankard water pitcher - white - frosty & pretty, a very nice example for one of these
- ___ 44. Oriental Poppy tankard water pitcher - marigold - dark & nice
- ___ 45. HEARTS & FLOWERS 9" PLATE - LIME GREEN - EXTREMELY RARE COLOR FOR THIS PLATE, NOT MANY KNOWN, VERY DESIRABLE
- ___ 46. Hearts & Flowers ruffled compote - lime green - super pretty & very rare
- ___ 47. Hearts & Flowers ruffled bowl - ice green - scarce & desirable, very pretty
- ___ 48. Concave Diamonds tumble up or guest set - vaseline - very popular
- ___ 49. Concave Diamonds vase - vaseline - very tough item to get
- ___ 50. MASTER GRAPE & CABLE 14 PC. PUNCH SET - WHITE - FROSTY & SUPER, ALL KINDS OF MULTI-COLORED IRID., RARE OPPORTUNITY TO BUY AN OUTSTANDING PIECE!
- ___ 51. MASTER GRAPE & CABLE 14 PC. PUNCH SET - MARIGOLD - FANTASTIC, AS GOOD AS THEY GET, VERY RARE & DESIRABLE
- ___ 52. Carnival Glass leaded lamp made from broken pieces, very pretty on nice brass base - believed to be made by Audrey Megan
- ___ 53. Peach 7 pc. water set - blue - electric & super! a rare set
- ___ 54. Peach 7 pc. water set - white w/gold - probably more rare than the blue set, also very nice
- ___ 55. Peach 4 pc. table set - white w/gold - very seldom sold, a tough set
- ___ 56. Peach 7 pc. berry set - white w/gold - also tough
- ___ 57. Poppy Show ruffled bowl - ice green - very rare & highly desirable, very pretty
- ___ 58. Poppy Show ruffled bowl - ice blue - very rare & highly desirable, nice
- ___ 59. Poppy Show ruffled bowl - white - very scarce & nice
- ___ 60. HORNED OWL HATPIN - PURPLE - ONLY KNOWN EXAMPLE & EXTREMELY DESIRABLE
- ___ 61. Horned Owl hatpin - amber - not iridized
- ___ 62. Snake hatpin - dark - only one known, is head of a snake, a great hatpin
- ___ 63. Strawberry hatpin - green - very rare
- ___ 64. Star of David & Baguetts hatpin - dark - rare
- ___ 65. N's Stippled Peacock at Urn master IC bowl - blue - extremely pretty & very rare stippled
- ___ 66. N's Stippled Peacock at Urn sauce - blue
- ___ 67. N's Peacock at Urn master IC bowl - ice green - super pretty, a little odd shaped, very scarce
- ___ 68. N's Peacock at Urn sauce - ice green
- ___ 69. N's Peacock at Urn master IC bowl - ice blue - a stunner! lots of multi-colored irid. all over this piece
- ___ 70. N's Peacock at Urn sauce - ice blue - nice
- ___ 71. N's Peacock at Urn master IC bowl - white - as nice as they get, scarce
- ___ 72. N's Peacock at Urn sauce - white
- ___ 73. N's Peacock at Urn master IC bowl - amethyst - blue highlights on this pretty bowl, not many look as good as this
- ___ 74. N's Peacock at Urn sauce - amethyst
- ___ 75. N's Peacock at Urn master IC bowl - marigold - I showed this to Jan and she said, "WOW!"
- ___ 76. N's Peacock at Urn sauce - marigold - better than "WOW!"
- ___ 77. SUNFLOWER SPT FTD RUFFLED BOWL - ICE BLUE - DARK & SUPER, A WONDERFUL RARE PIECE OF GLASS, SELDOM AVAILABLE
- ___ 78. SUNFLOWER SPT FTD RUFFLED BOWL - RENINGER BLUE - SUPER IRID., EXTREMELY RARE! SELDOM AVAILABLE
- ___ 79. Inverted Strawberry powder jar - marigold - very nice
- ___ 80. HEARTS & FLOWERS 9" PLATE W/RIBBED BACK - ICE BLUE - EXTREMELY RARE & DESIRABLE, A GREAT PIECE OF GLASS
- ___ 81. Hearts & Flowers PCE bowl w/ribbed back - ice blue - very rare in PCE, nice
- ___ 82. Hearts & Flowers ruffled bowl w/ribbed back - ice blue - very pretty
- ___ 83. Hearts & Flowers ruffled compote - ice blue - scarce & pretty
- ___ 84. Stippled Banded Grape & Cable dresser tray - marigold - rare variation of the dresser tray, nice
- ___ 85. Stippled Grape & Cable ruffled bowl w/ribbed back - green - electric irid., a super pretty piece of glass, rare

- ___ 86. Stippled Grape & Cable ruffled bowl w/ribbed back - blue - very rare, much more rare than the PCE, pretty
- ___ 87. Apple Tree water pitcher - marigold - pretty, even color from top to bottom
- ___ 88. Horse Medallion ftd nut bowl - red slag - pretty irid., a great example, rare
- ___ 89. Amaryllis dome ftd plate - marigold - scarce & pretty
- ___ 90. Grape & Cable hatpin holder - blue - very rare & pretty, blue Grape & Cable is very hard to get
- ___ 91. Grape & Cable hatpin holder - lavender - very pretty & rare, not many around
- ___ 92. Grape & Cable hatpin holder - green - very hard to find pretty & this one is
- ___ 93. Grape & Cable hatpin holder - black amethyst - very rare & pretty
- ___ 94. Grape & Cable hatpin holder - purple - super!
- ___ 95. Grape & Cable hatpin holder - marigold - nice
- ___ 96. Dragon & Lotus ruffled bowl - red - cherry red color, rare & desirable
- ___ 97. Fruits & Flowers bon bon - ice green - super pretty & very scarce
- ___ 98. Fruits & Flowers bon bon - ice blue - super dark w/multi-colored irid.
- ___ 99. Stippled Rays IC shaped 6" bowl - reverse amberina, nice
- ___ 100. ROSE SHOW 9" PLATE - EMERALD GREEN - EXTREMELY RARE & HIGHLY SOUGHT AFTER BY COLLECTORS, PRETTY, A TOP PIECE IN THE AUCTION
- ___ 101. Rose Show 9" plate - ice blue - outstanding, as good as I've sold, flat w/multi-colored irid.
- ___ 102. Rose Show 9" plate - blue - very nice, highly desired
- ___ 103. Rose Show 9" plate - marigold - super irid.! even from one end to the other, dark & nice
- ___ 104. Rose Show 9" plate - white - flat & spectacular, as nice of white one I've ever seen
- ___ 105. Plume Panels 11" vase - red - very rare & pretty, has red irid.!
- ___ 106. Covered Frog - ice green - very rare novelty, few have been sold lately
- ___ 107. Concord ruffled bowl - green - fantastic color, has minor nick on base
- ___ 108. Concord ruffled bowl - marigold - dark & nice
- ___ 109. Concave Diamonds ruffled vase - russet - a tough piece to get
- ___ 110. M'BURG PEACOCK AT URN RUFFLED SHOTGUN BOWL - MARIGOLD - SATIN & SUPER, ONLY THE 2ND ONE I KNOW OF, HIGHLY SOUGHT AFTER PIECE
- ___ 111. Pulled Loop 11 1/2" vase - celest blue - very pretty stretchy irid., rare
- ___ 112. Holly goblet shaped compote - red - scarce & desirable
- ___ 113. Kittens 4 sided ruffled bowl - blue - pretty example, as good as they get
- ___ 114. Kittens 4 sided ruffled bowl - amethyst - scarce color
- ___ 115. Kittens 4 sided ruffled bowl - vaseline - another scarce color
- ___ 116. Kittens 4 sided ruffled bowl - blue - 2 sets of kitties, much harder to find
- ___ 117. Blossomtime ruffled compote - purple - scarce & nice
- ___ 118. Blackberry ftd ruffled compote w/Daisy & Plume exterior - lime green - extremely rare color & has super irid.
- ___ 119. Blackberry ftd ruffled compote w/Daisy & Plume exterior - ice blue - dark & beautiful w/multi-colored irid.
- ___ 120. Illinois Soldiers & Sailors 7" plate - marigold - as pretty as they get, super! a carnival classic
- ___ 121. Stippled Fruits & Flowers 7" ruffled bowl - green - very scarce stippled and pretty
- ___ 122. Stippled Fruits & Flowers 7" ruffled bowl - marigold - nice
- ___ 123. Holly 9" plate - amethyst - very unusual plate, scarce
- ___ 124. Orange Tree 9" plate - marigold - dark, nice
- ___ 125. Stippled Grape & Cable small size punch set - blue - very pretty & extremely rare
- ___ 126. Fenton's Grape & Cable IC shaped bowl - red - very scarce
- ___ 127. Stag & Holly chop plate - marigold - very dark w/pretty irid., rare & desirable
- ___ 128. Big Basketweave 10" vase - amethyst - very pretty
- ___ 129. Panther ftd ruffled sauce - red - super example, rare & desirable
- ___ 130. TWIN GATORS HATPIN - DARK - VERY PRETTY IRID. ON THIS RARE, RARE, RARE HATPIN, ONE OF THE MOST WISHED FOR
- ___ 131. Bee on Flower hatpin - dark - very rare & desirable w/pretty irid.
- ___ 132. Jeweled Trefoil hatpin - dark - very rare hatpin & pretty
- ___ 133a. Stylized Scarab Shell hatpin - green - very rare
- ___ 133. Sunflower hatpin - white - very scarce
- ___ 134. HEARTS & FLOWERS 9" PLATE W/RIBBED BACK - WHITE - OUTSTANDING EXAMPLE OF THIS RARE PLATE, HAS PRETTY IRID., A MUST FOR NORTHWOOD COLLECTORS
- ___ 135. Hearts & Flowers PCE bowl w/ribbed back - white - very hard to find in this shape
- ___ 136. Hearts & Flowers ruffled bowl w/ribbed back - white - scarce, nice
- ___ 137. Hearts & Flowers ruffled compote - white
- ___ 138. Fenton Peacock at Urn 9" plate - marigold - very pretty, scarce



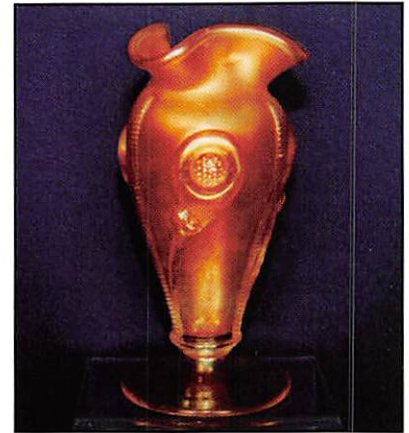
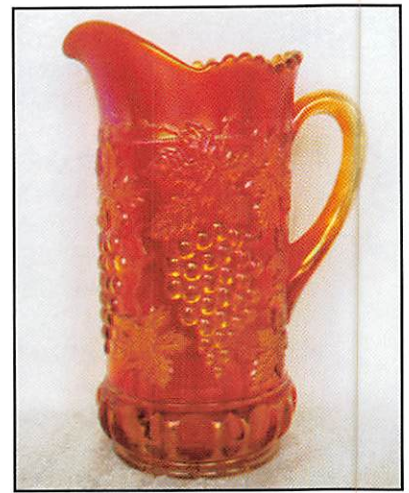


- ___ 139. Pond Lily bon bon - ice green - very rare, only one I know of, lacks irid.
- ___ 140. Stag & Holly spt ftd ruffled bowl - red - extremely rare & desirable, nice
- ___ 141. Wishbone & Spades 6" plate - purple - very pretty
- ___ 142. Formal hatpin holder - purple - rare & desirable, not many around
- ___ 143. Formal hatpin holder - marigold - also very rare & desirable
- ___ 144. Holly ruffled hat shape - red - very scarce, nice
- ___ 145. Hearts & Flowers ruffled bowl - aqua - very pretty & nice, a tough color
- ___ 146. Thin Rib 6" squatty vase - lime green - very rare vase, pretty, squatty vases are hot
- ___ 147. Thin Rib 7" squatty vase - ice blue - also rare & highly desirable, pretty
- ___ 148. Fine Cut & Roses ftd candy dish - aqua opal - pastel & nice, lots of opal
- ___ 149. Blackberry Spray ruffled hat shape - aqua opal - a rare piece of aqua opal
- ___ 150. TREE TRUNK 18" FUNERAL VASE - AMETHYST - SUPER PRETTY & EXTREMELY RARE, TOUGH TO FIND THIS PIECE PRETTY
- ___ 151. Miniature Morning Glory 7 1/2" vase - smoke - nice
- ___ 152. Miniature Morning Glory 7" vase - purple - super
- ___ 153. Miniature Morning Glory 6" vase - purple - pretty
- ___ 154. Miniature Morning Glory 6" vase - smoke - pretty
- ___ 155. Miniature Morning Glory 5" vase - green
- ___ 156. Miniature Morning Glory 5" vase - marigold
- ___ 157. Miniature Morning Glory 4" vase - marigold - top flattened out
- ___ 158. Butterfly & Berry 9" vase - red slag - extremely rare & desirable, nice
- ___ 159. Butterfly & Berry 8" vase - blue
- ___ 160. Peacocks 9" plate w/ribbed back - ice blue - extremely rare & desirable, very hard to find
- ___ 161. Peacocks 9" plate w/ribbed back - green - super, very, very pretty irid. on this rare plate
- ___ 162. Peacocks 9" plate w/ribbed back - blue - electric & spectacular, as nice as I've sold
- ___ 163. Peacocks 9" plate w/ribbed back - purple - super pretty
- ___ 164. Peacocks 9" plate w/ribbed back - marigold - very nice irid.
- ___ 165. Peacocks 9" plate w/ribbed back - ice green - pretty, scarce
- ___ 166. Peacocks 9" plate w/ribbed back - white - frosty & nice
- ___ 167. M'burg Seacoast pintray - amethyst - pretty & perfect, very desirable little tray
- ___ 168. M'burg Seacoast pintray - marigold - light color but pretty irid., rare
- ___ 169. Persian Medallion bon bon - celest blue - pretty stretchy irid., a tough bon bon
- ___ 170. GOOD LUCK RUFFLED BOWL W/RIBBED BACK - ICE BLUE - DARK W/MULTI-COLORED IRID., EXTREMELY RARE & DESIRABLE, THIS IS A GOODIE
- ___ 171. M'burg Tulip Scroll 7" vase - amethyst - radium & pretty, hard to find
- ___ 172. M'burg Tulip Scroll 7 1/2" vase - marigold - radium, dark, even irid. from top to bottom
- ___ 173. Holly ruffled bowl - red - rare, has some amberina in the base
- ___ 174. Princess Lamp - purple - outstanding irid., very rare
- ___ 175. Peacock at the Fountain ruffled compote - blue - has electric highlights, is very rare, an outstanding piece!
- ___ 176. Peacock at the Fountain ruffled compote - marigold - dark & super, a fantastic example!
- ___ 177. Stippled Three Fruits spt ftd bowl - aqua opal - pastel & pretty, quite scarce
- ___ 178. HEARTS & FLOWERS 9" PLATE W/RIBBED BACK - GREEN - VERY, VERY RARE, NOT MANY AROUND & SELDOM SOLD
- ___ 179. M'burg Hobnail Swirl 9 1/2" vase - marigold - good even color from top to bottom
- ___ 180. JWELED OWL HATPIN - GREEN - PRETTY IRID. ON THIS HIGHLY DESIRED HATPIN
- ___ 181. True Scarab hatpin - dark - very rare & pretty!
- ___ 182. Sun's Up hatpin - lavender - scarce
- ___ 183. Jute Braid hatpin - purple - scarce
- ___ 184. Unlisted hatpin - white
- ___ 185. Dugan's Vintage dome ftd deep ruffled bowl - celest blue - super pretty & very rare
- ___ 186. Tree Trunk 12 1/2" midsize vase - ice green - scarce & highly desirable
- ___ 187. Tree Trunk 11 1/2" midsize vase - white - pretty & scarce
- ___ 188. Tree Trunk 13" midsize vase - blue - scarce & pretty, electric!
- ___ 189. Tree Trunk 13" midsize vase - green - scarce & pretty
- ___ 190. Tree Trunk 13" midsize vase - purple - pretty
- ___ 191. Tree Trunk 12" midsize vase - marigold - dark from top to bottom, pretty
- ___ 192. N's Poppy Pickle dish - aqua opal - nice example of this rare pickle dish
- ___ 193. N's Poppy Pickle dish - ice blue - scarce & nice
- ___ 194. Miniature boot w/laces - marigold - inscribed World's Fair, one of 2 I know of, rare miniature
- ___ 195. Grape & Cable perfume bottle - purple - fantastic is a good word for it

- ___ 196. Grape & Cable perfume bottle - marigold - scarce & desirable
- ___ 197. Grape & Cable powder jar - green - very pretty, nice
- ___ 198. Grape & Cable powder jar - purple - nice
- ___ 199. Grape & Cable powder jar - marigold - nice
- ___ 200. RUSTIC 18 1/2" FUNERAL VASE W/PLUNGER BASE - AMETHYST - SPECTACULAR IRID., SUPER PRETTY & VERY RARE
- ___ 201. Rose Show ruffled bowl - ice blue - rare & desirable, nice
- ___ 202. Rose Show ruffled bowl - aqua opal - lots of opal w/pretty butterscotch irid., scarce
- ___ 203. Rose Show ruffled bowl - blue opal - not carnival glass
- ___ 204. Sailboats ruffled sauce - red - very pretty, has reddish irid.
- ___ 205. Corn vase - purple - the best corn vase I have ever seen! a super dooper!
- ___ 206. Corn vase - green - very scarce, pretty
- ___ 207. Crucifix candlesticks - marigold - very rare matching pair, nice
- ___ 208. Voltive light - marigold - dark & very rare, not many known
- ___ 209. 1910 Detroit Elk's ruffled bowl - amethyst - very pretty example & scarce
- ___ 210. Stippled Three Fruits 9" plate w/ribbed back - blue - electric irid., super, super
- ___ 211. Stippled Three Fruits 9" plate w/ribbed back - amethyst - very nice, scarce
- ___ 212. Bardenheir wine bottle whimsy made into an ashtray - marigold - if you like oddities, here it is
- ___ 213. Golden Wedding sample bottle - marigold - nice paper label
- ___ 214. Golden Wedding pint whiskey bottle w/original cap, original box & original everything - marigold
- ___ 215. Vintage IC shaped 9" bowl - red - has dark irid., very rare & desirable
- ___ 216. Stippled Three Fruits collar based ruffled bowl w/ribbed back - aqua opal - rare & desirable
- ___ 217. Stippled Three Fruits collar based ruffled bowl w/ribbed back - marigold - pumpkin & beautiful
- ___ 218. Orange Tree hatpin holder - blue - epoxy on one foot, nice
- ___ 219. Orange Tree hatpin holder - marigold - dark, nice from top to bottom
- ___ 220. Poppy Show 9" plate - ice blue - very pretty example, as good as they get for this rare plate
- ___ 221. Poppy Show 9" plate - blue - extremely rare & desirable
- ___ 222. Poppy Show 9" plate - marigold - lots of pink irid. on this rare plate
- ___ 223. M'burg Cherries large ruffled bowl w/Hobnail back - marigold - dark w/spectacular satin irid., has minor heat check in base
- ___ 224. Pinecone saucer shaped 6" plate - marigold - pumpkin dark, pretty
- ___ 225. Petals ruffled compote - ice blue - only one I know of, very rare & desirable, nice
- ___ 226. Orange Tree powder jar - blue - super pretty
- ___ 227. Orange Tree powder jar - marigold - dark & nice
- ___ 228. Dandelion Knights Templar mug - ice blue - scarce
- ___ 229. Dandelion mug - aqua opal - super butterscotch irid., pretty & scarce!
- ___ 230. TINY OWL HATPIN - BLUE - VERY PRETTY, EXTREMELY RARE
- ___ 231. Jeweled Scarab Shell hatpin - blue - tough to find hatpin, highly desirable
- ___ 232. Small Scarab Shell hatpin - dark - smaller than the previous Scarab, extremely rare
- ___ 233. Looped Buckle hatpin - dark - very scarce, pretty
- ___ 234. Fancy Beetle hatpin - dark - non iridized
- ___ 235. PERSIAN MEDALLION 9" PLATE - WHITE - SUPER, SUPER IRID. ON THIS RARE PLATE, A DANDY!
- ___ 236. Stippled & Banded Grape & Cable cologne bottle - marigold - hard to find this way, nice
- ___ 237. Finecut & Roses rosebowl - aqua opal - extremely rare, has minor buffing on feet
- ___ 238. N's Thin Rib 11" vase - ice green - scarce, pretty
- ___ 239. Fenton's Thin Rib 11 1/2" vase - aqua - scarce color
- ___ 240. GOOD LUCK 9" PLATE W/RIBBED BACK - BLUE - EXTREMELY RARE COLOR FOR THIS PLATE, HAS ELECTRIC HIGHLIGHTS, A DANDY
- ___ 241. Good Luck 9" plate w/ribbed back - marigold - pastel & pretty, also very hard to find
- ___ 242. M'burg Sunflower pintray - amethyst - very pretty & nice, tough to find
- ___ 243. M'burg Sunflower pintray - marigold - rare to find nice & this one is
- ___ 244. M'burg Courthouse IC shaped bowl - amethyst - very desirable shape for this scarce piece
- ___ 245. Hearts & Flowers ruffled bowl w/ribbed back - blue - very rare color for Hearts & Flowers, pretty!
- ___ 246. Diamond Points 9" vase - aqua opal - scarce vase, nice
- ___ 247. Diamond Points 9 1/2" vase - sapphire - spectacular pastel irid., a super vase!
- ___ 248. Diamond Points 10" vase - ice blue - pretty, scarce
- ___ 249. Diamond Points 9 1/2" vases (2) - ice green - scarce, choice
- ___ 250. Grape Arbor 7 pc. tankard water set - ice blue - very rare set & pretty, hard to find complete
- ___ 251. Grape Arbor tankard water pitcher - white

- frosty, pretty

- ___ 252. Grape Arbor tumbler - white
- ___ 253. Embroidered Mums ruffled bowl w/ribbed back - ice blue - very rare, pretty
- ___ 254. Daisy & Drape turned out vase - aqua opal - lots of opal on this scarce vase
- ___ 255. PEACOCK TAIL IC SHAPED 7" BOWL - RED - CHERRY, CHERRY COLOR & VERY RARE, A NICE PIECE
- ___ 256. N's Peach small berry bowl - celest blue - extremely rare, pastel & super pretty
- ___ 257. Little Barrel - marigold - has Durer Bros. Cazenovia, Wis. paper label
- ___ 258. Grape & Cable tankard water pitcher - marigold - pumpkin & super pretty!
- ___ 259. Grape & Cable tankard tumbler - marigold
- ___ 260. Stippled Grape & Cable plate w/ribbed back - blue - very rare & nice
- ___ 261. Stippled Grape & Cable plate w/ribbed back - sapphire - small spot of epoxy on one point, very minor for this beautiful & rare plate
- ___ 262. Stippled Grape & Cable plate w/ribbed back - green - has pretty reddish irid.
- ___ 263. Stippled Grape & Cable plate w/ribbed back - marigold - dark, super, as rare as any color
- ___ 264. Vintage ruffled sauce - celest blue - super pretty irid., one of just a few known, a neat piece
- ___ 265. M'BURG PEACOCK AT URN 6" PLATE - AMETHYST - SATIN & RARE, A SUPER ONE!
- ___ 266. Grape & Cable punch cups (2) - irid. custard - choice
- ___ 267. Plaid ruffled bowl - red - extremely rare & desirable, not many available
- ___ 268. Grape & Cable humidor - marigold - nice
- ___ 269. Hearts & Flowers ruffled compote - aqua opal - lots of opal, minor base ruffness
- ___ 270. Poinsettia & Lattice ftd ruffled bowl - ice blue - super & rare, a very pretty pattern
- ___ 271. Concave Diamonds 10 pc. water set - celest blue - has lid, pitcher, 4 coasters & tumblers
- ___ 272. Concave Daimonds tumble-up or guest set - celest blue - very popular
- ___ 273. Concave Daimonds ruffled vase - celest blue - very rare item
- ___ 274. Leaf Chain 7" ruffled bowl - red - rare & pretty, a dandy
- ___ 275. Hearts & Flowers 9" plate w/ribbed back - amethyst - very rare plate & nice, most of these are not as pretty as this one
- ___ 276. Hearts & Flowers PCE bowl w/ribbed back- amethyst - very rare in this shape
- ___ 277. Stippled Grape & Cable PCE bowl w/ribbed back - ice blue - pretty & rare
- ___ 278. Tree Trunk 13" Elephant foot funeral vase - purple - super pretty & rare, has a crack on the side of vase



- ___ 279. Rustic 10" vases (2) - white - sold choice
 ___ 280. Grape & Cable dresser tray - ice blue - very pretty irid. on this rare piece
 ___ 281. Grape & Cable pintray - ice blue - very rare & nice, highly desirable
 ___ 282. Tornado Variant footed vase - marigold - extremely rare & highly desirable
 ___ 283. Stippled Peacocks 9" plate - marigold - very pretty, scarce
 ___ 284. Stippled Good Luck ruffled bowl w/ribbed back - blue - electric irid. on this rare piece
 ___ 285. Tree Trunk 10 1/2" vase - aqua opal - outstanding butterscotch irid., rare
 ___ 286. Tree Trunk 10" vase - sapphire - pastel irid. on this rare vase
 ___ 287. Tree Trunk 10" vase - ice green - scarce & nice
 ___ 288. Tree Trunk 11" vase - ice blue - pretty & scarce
 ___ 289. Tree Trunk 10" vase - white - nice
 ___ 290. Kittens ruffled bowl - blue - scarce & desirable
 ___ 291. Waterlily ftd ruffled sauce - red - cherry red color, scarce
 ___ 292. Peacocks ruffled bowl - ice blue - fantastic example, RARE!
 ___ 293. Peacocks ruffled bowl - aqua opal - pastel, super nice
 ___ 294. Acorn ruffled bowl - red - very scarce, nice!
 ___ 295. Rose Show Variant ruffled bowl - blue - much harder to find than the Rose Shows, super pretty
 ___ 296. Grape & Gothic Arches water pitcher - marigold - great irid.
 ___ 297. Grape & Gothic Arches tumbler - marigold
 ___ 298. Diamond Points 6 1/2" squatty vase - ice blue - extremely rare, tough in this size
 ___ 299. Lined Lattice 10" vase - white - pretty irid.
 ___ 300. PETER RABBIT 9" PLATE - GREEN - SUPER FANTASTIC & EXTREMELY RARE, A GREAT PIECE OF GLASS!
 ___ 301. UGLY BUG HATPIN - DARK - PRETTY IRID., ONE OF TWO THAT I KNOW OF, another to put on your wish list
 ___ 302. Piazza hatpin - dark - rare, pretty
 ___ 303. Two Flowers hatpin - dark - super pretty, rare
 ___ 304. Leaf & Veiling hatpin - dark - pretty
 ___ 305. Miniature Beetle stick pin - green - only one known
 ___ 306. Owl button - blue - non iridized
 Unlisted hatpin - dark - no shank
 Embroidered Rose label pin - marigold
 Iridized Rosary - dark choice
 ___ 307. Persian Medallion bon bon - red - very rare & desirable, nice
 ___ 308. Fine Rib 10" vase - aqua - scarce, pretty
 ___ 309. Smooth Panels 4" vase - marigold on milkglass - has 5 1/2" mouth, nice
 ___ 310. Acorn Burrs 7 pc. water set - marigold - dark color & irid., outstanding matching set
 ___ 311. Kittens toothpick - blue - very scarce
 ___ 312. Orange Tree ruffled bowl - red - slightly warped base - rare & desirable
 ___ 313. Carolina Dogwood ruffled bowl - blue opal - scarce
 ___ 314. N's Eight sided bushel basket - ice blue - scarce, nice
 ___ 315. Blackberry Spray 2 sides up hat - red - cherry & pretty
 ___ 316. Tornado small size vase - green - nice, rare
 ___ 317. Cornucopia candlestick w/metal feet - ice blue - different, nice
 ___ 318. Blackberry spray ruffled hat - red opal - very nice, as pretty as they get
 ___ 319. Peach tumbler - marigold - Crider iridized
 ___ 320. Paneled Diamond & Bows 8" vase - blue
 ___ 321. Tree Trunk 7" squatty vase - ice blue - super pretty, very rare
 ___ 322. Kittens 2 sides up dish - blue - non iridized
 ___ 323. Hearts & Flowers 9" plate w/ribbed back - marigold - super pretty, a great plate
 ___ 324. Hearts & Flowers PCE bowl w/ribbed back - marigold - fabulous, has pink irid.
 ___ 325. Hearts & Flowers ruffled bowl - marigold - dark, super nice
 ___ 326. Hearts & Flowers ruffled compote - marigold - also dark, nice
 ___ 327. 1976 Liberty Bell - red - not old
 ___ 328. ACGA 1991 Inverted Strawberry hldd basket - red
 ___ 329. Westmoreland covered cat candy dish - red - not old
 ___ 330. 1979 HOACGA loving cup - red
 ___ 331. ICGA 1982 Frolicking Bears spittoon - red
 ___ 332. Fenton Chessie Cat covered candy dish - red
 ___ 333. Tall Chessie Cat - red
 ___ 334. Large ftd 1 pc. punch bowl w/Indians on Horses and Buffalos running - blue - unusual, not old
 ___ 335. Kittens hldd basket - red - not old
 ___ 336. 1991 ICGA table favor boot w/roses - red
 ___ 337. 1991 HOACGA Peacock & Dahlia plate - red
 ___ 338. Books (including Owen's tumbler & Sherman Hand hardcover) (9) - choice

Seeck Auctions

P.O. Box 377
Mason City, Iowa 50402

FIRST CLASS

