

# CARNIVAL GLASS AUCTION

Saturday, July 19, 1997, 9:00 a.m.

(Note Time Change 9:00 a.m. C.D.S.T.)



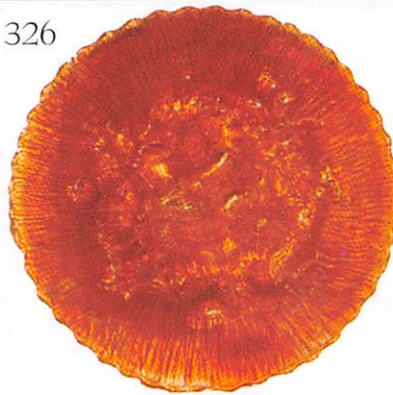
## Held Inside the Mickey Reichel Auction Center

1 Mile North of I-70 on Hwy. 5, Exit 101, Boonville, Missouri • 20 Miles West of Columbia, MO on I-70

275



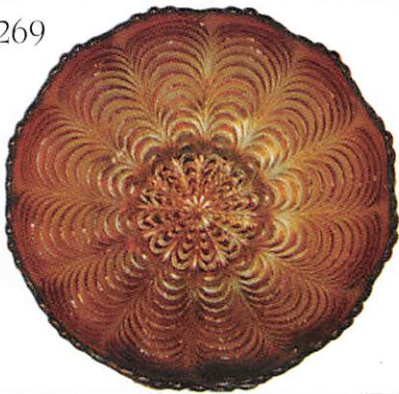
326



327



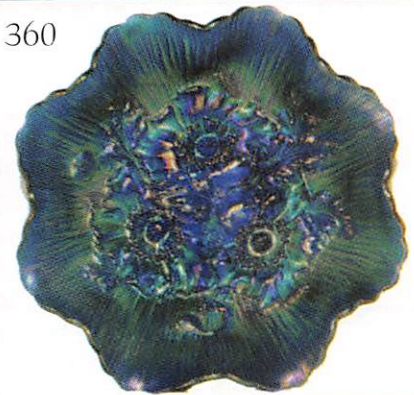
269



343



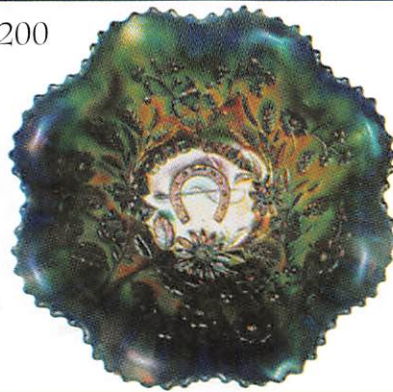
360



300



200



301



**SOLD WITH NO RESERVES - NO BUYERS PREMIUM**

# Held Inside the Mickey Reichel Auction Center

1 Mile North of I-70 on Hwy. 5, Exit 101, Boonville, Missouri • 20 Miles West of Columbia, MO on I-70  
Preview Friday 12 p.m. - 6 p.m. and 7:30 a.m. - 9 a.m. Day of Auction

Make Reservations **NOW** at one of these local motels:

Comfort Inn: 816-882-5317 • Super 8 Motel: 816-882-2900 • Days Inn: 816-882-8624

## **MURRY AND FRAN WITZENBURG COLLECTION OF DES MOINES, IOWA**

### **Auction consists of Rarity, Great Irid. and Variety**

**WRITE IN BIDS:** If you are unable to attend the auction, we will be happy to accept absentee bids which must be received by THURSDAY, July 17, 1997. Don't Delay. **FOR AUCTION PRICE RESULTS:** Send S.A.S.E and \$3.00 to 516 Third Street, Boonville, MO 65233.

**PLEASE NOTE:** There is a \$5 handling charge for each successful bid which will be added to the selling price for all write-in bids. This is in addition to the cost of postage, insurance and packing. Your write-in bid will be entered just as if you are present and bidding. Successful bidders will be notified in 1 to 3 days by the auctioneer (so be sure to include your phone number). Direct mail bids to Auctioneer Mickey Reichel, 516 Third Street., Boonville, MO 65233-1536. Terms: Cash or Check accepted with proper I.D. and Social Security Number and References. Announcements made day of the auction supercede all printed material. Not Responsible for Accidents or Sold Items. No return on any items once they leave the Auction Center (No Exceptions).

Call for additional information: 816-882-5292 days or 816-882-5283 evenings.

FAX: 816-882-5292 (evening hours start FAX transmission after beep)



**NOTE: Remember Auction Starting Time**

**1/2 Hour Early.**

**Make reservations at motel early.**

- |  |   |
|--|---|
| _____ 1-A. M - Stippled Rays Creamer; (1-B) M - Pillar and Flute Creamer; (1-C) M - Pansy Creamer; (1-D) M - Thorn & Thistle Creamer; (1-E) M - Luster Rose Creamer; (1-F) M - Lea Creamer | _____ 20. P.O. - Dugan, 8 Ruffle, Coin Spot Compote - Lots Opal                                   |
| _____ 2-A. P - <u>N</u> Luster Flute Creamer; (2-B) G- <u>N</u> Luster Flute Creamer   | _____ 21. P.O. - Round 7", C.R.E., Dugan Cherries FTD Bowl - Plain Int.                           |
| _____ 3-A. P - <u>N</u> Breakfast Grape & Cable Creamer; (3-B) M - Breakfast Grape & Cable Creamer   | _____ 22. <b>Red - 10" Fenton Fine Rib Vase - Super</b>   |
| _____ 4. M - 2 Row Open Edge Basket  | _____ 23. <b>Yellow Vas. - 9 1/2" Fenton Fine Rib Vase - Very Scarce Color</b>                    |
| _____ 5. M - 2 Sides Up, Blackberry Basket - Open Edge   | _____ 24. B - 8 1/2" Fenton Fine Rib Vase   |
| _____ 6. M - 2 Sides Up - 2 Row O.E. Basket - Adv. John Brand Furniture  | _____ 25. M - 9 3/4" Fenton Fine Rib Vases - A or B   |
| _____ 7. <b>G - 2 Row, Open Edge, 6 Ruffle Blackberry Basket - A or B - Scarce Color</b>   | _____ 26. M - 12" Fenton Fine Rib Vase  |
| _____ 8. <b>Red - 6 1/4", 2 Row, Open Edge, Blackberry Basket - Very Nice &amp; Scarce</b>   | _____ 27. G - 10" <u>N</u> Thin Rib Vases - A or B - Both Beautys                                 |
| _____ 9. <b>Aqua Base - 5 3/4", O.E., 6 Ruffle Basket - Also Scarce</b>  | _____ 28. M - 9 1/2" <u>N</u> Fine Rib Vase - Dark  |
| _____ 10. <b>M - 6", 2 Row, O.E., Blackberry Basket</b>  | _____ 29. G - 11 1/2" Plume Panels Vase   |
| _____ 11. M - Fenton Flowers Rose Bowls - A or B   | _____ 30. M - 10" Plume Panels Vase   |
| _____ 12. <b>Red - Ruffle Blackberry Spray Hat - A Beauty</b>  | _____ 31. Teal - 9" Corinth Vase, 4" Rd. Top  |
| _____ 13. P.O. - Tri-Corner, CRE, Beaded Panels, Opal Open Compote   | _____ 32. Lav. - 8" Corinth Vase, 4 1/2" Rd. Top  |
| _____ 14. P - Question Mark Compote - Dark Scarce Color  | _____ 33. Violet - 9" Corinth J.I.P. Vase   |
| _____ 15. B - Butterfly and Berry Tumblers - 2 x \$  | _____ 34. A - 8 3/4" Collar Base Chrysanthemum Ruffle Bowl - Scarce Base And Color                |
| _____ 16. <b>Pastel Violet - <u>N</u> - 9" Ruffled Grape Leaves Bowl - Super Irid.</b>   | _____ 35. <b>G - 8 3/4" Collar Base, Ruffle Dragon &amp; Lotus Bowl - Scarce and Nice</b>         |
| _____ 17. B - Ruffled, C.R.E., Persian Medallion Compote   | _____ 36. <b>A - 8 3/8" Spat. FTD. Low Round Dragon and Lotus Bowl - Super Irid. - Rare Shape</b> |
| _____ 18. A - Ruffled Birds and Cherries Compote - Scarce Color and Nice   | _____ 37. M - 11" - 8 Ruffle Sq. Shape Lg. Stag and Holly - Dark and Nice                         |
| _____ 19. <b>B - Dugan, 8 Ruffle, Coin Spot Compote - Rare Color - Very Nice</b>   | _____ 38. M - 10 1/2" I.C.S., Lg. Stag and Holly - Pinks, Blues & Golds                           |
|  | _____ 39. M - Imperial Grape Water Pitcher - Lots of Pinks & Gold                                 |
|  | _____ 40. M - 15 1/2" Dark Rustic Swung Vase - 4 1/8" Base - 4 1/2" Top                           |
|  | _____ 41. <b>M - <u>N</u> Oriental Poppy Tankard Pitcher - Great Radium</b>                       |
|  | _____ 42. M - <u>N</u> Oriental Poppy Tumbler - Match - 5 x \$                                    |
|  | _____ 43. M - <u>N</u> Grape and Cable, Breakfast Cr. & Sugar                                     |

- \_\_\_\_\_ 44. A - N Grape and Cable Breakfast Cr. & Sugar
- \_\_\_\_\_ 45. **M - N Greek Key Plate - B.W. Est. - Scarce and Very Desirable**
- \_\_\_\_\_ 46. P - N Acorn and Burrs Master Berry Bowl and 5 Small Ones - In Big Demand
- \_\_\_\_\_ 47. Dark Purple - 10<sup>3</sup>/<sub>4</sub>" N Grape and Cable Fruit Bowl - Rainbow Center - No Scratches - Footed
- \_\_\_\_\_ 48. **G - N Ruffle B.W. Good Luck Variant Bowl - Fewer Berries - Very Rare**
- \_\_\_\_\_ 49. **B - N Ruffle Rib Bk. Good Luck Bowl - Multi Elec.**
- \_\_\_\_\_ 50. **I.B. - N Rib Back Ruffle - Poinsettia FTD. Bowl - Rare w/Hi Demand**
- \_\_\_\_\_ 51. VAS. - 8<sup>1</sup>/<sub>2</sub>" Northwood Florentine Candle Sticks - Pair
- \_\_\_\_\_ 52. Celeste - 8<sup>1</sup>/<sub>2</sub>" Florentine Candle Sticks A - N or B - Fenton Variation
- \_\_\_\_\_ 53. **Florentine Ice Green - Premium Candle Sticks Pair - Rare Color**
- \_\_\_\_\_ 54. **Smoke - Double Scroll Candle Sticks Pair - Very Rare Color**
- \_\_\_\_\_ 55. M - N 7<sup>3</sup>/<sub>4</sub>" Drapery Vase - Scars - Lots of Pinks
- \_\_\_\_\_ 56. **Aqua - 12<sup>1</sup>/<sub>4</sub>" Imperial Ripple Vase - Radium Beauty - Rare Color**
- \_\_\_\_\_ 57. P - 7<sup>7</sup>/<sub>8</sub>" Ripple Vase - Very Pretty
- \_\_\_\_\_ 58. B.A. - Grape De-lite Rose Bowl
- \_\_\_\_\_ 59. **Super Multi Elec., Blues Garland Rose Bowl - A Beauty**
- \_\_\_\_\_ 60. Teal - Louisa Rose Bowl
- \_\_\_\_\_ 61. Pastel A.O. - N Beaded Cable Rose Bowl - Very Desirable
- \_\_\_\_\_ 62. **Red 6<sup>1</sup>/<sub>2</sub>", 6 Ruffle Stippled Rays Scale Band Bowl - Great One**
- \_\_\_\_\_ 63. M - N Grape and Cable Water Pitcher - Pinks and Golds
- \_\_\_\_\_ 64. A - N Grape and Cable Tumbler
- \_\_\_\_\_ 65. B - Dugan Peacock at the Fountain Tumbler
- \_\_\_\_\_ 66. A - Imp. Windmill Tumbler - Multi Radium Beauty
- \_\_\_\_\_ 67. A - Imp. Field Flowers Tumbler - Multi Radium Beauty
- \_\_\_\_\_ 68. **M - Leaf Tiers FTD. Tumbler - Dark and Scarce**
- \_\_\_\_\_ 69. **M - Jeweled Heart Tumbler - Dark Satin & Scarce**
- \_\_\_\_\_ 70. P - Flute Cream and Sugar - Beautiful Set - Imp. Finest
- \_\_\_\_\_ 71. A - 9<sup>3</sup>/<sub>4</sub>" Mlbg., 6 Ruffle Whirling Leaves - Satin
- \_\_\_\_\_ 72. A - 9<sup>1</sup>/<sub>2</sub>" Mlbg., 6 Ruffle Whirling Leaves - Radium
- \_\_\_\_\_ 73. M - 9<sup>1</sup>/<sub>2</sub>" Mlbg., Round, Scalloped, Rays and Ribbons - Flared Satin
- \_\_\_\_\_ 74. G - Mlbg., Hanging Cherries Butter Dish - Super - w/Base Chips
- \_\_\_\_\_ 75. G - Mlbg. 9<sup>1</sup>/<sub>2</sub>" Ruffled Rays and Ribbons - Beautiful Radium Irid.
- \_\_\_\_\_ 76. P.O. - 9<sup>1</sup>/<sub>4</sub>", 10 Ruffle, Dome FTD. Dogwood Sprays Bowl - Dugan - Blues, Pinks & Golds
- \_\_\_\_\_ 77. **M - Pint Schenley's Golden Wedding Bourbon Bottle - Rare - w/Labels and Cap**
- \_\_\_\_\_ 78. A - Grape and Cable Bon Bon - Pretty Satin One
- \_\_\_\_\_ 79. **Green - Imp. Logan Berry Vase - Radium - Glows Under Black Lite**
- \_\_\_\_\_ 80. **Aqua - 10<sup>3</sup>/<sub>4</sub>" Radium Beauty Imp. Ripple Vase - Rare Beauty**
- \_\_\_\_\_ 81. G - 10<sup>1</sup>/<sub>2</sub>" N Dia. Point Vase - Super - Dye Run in Base
- \_\_\_\_\_ 82. P - 10<sup>3</sup>/<sub>4</sub>" N Dia. Point Vase
- \_\_\_\_\_ 83. A - 7<sup>1</sup>/<sub>4</sub>" N Dia. Point Vase
- \_\_\_\_\_ 84. **IG. - 8<sup>1</sup>/<sub>2</sub>" N Drapery Vase - Beautiful Example**
- \_\_\_\_\_ 85. G - Alaskan Effect, 7" N Tree Trunk Vase - Different Color
- \_\_\_\_\_ 86. **M - 10" N Tree Trunk Vase - 32 Point Star Base - Variant - Scarce Item**
- \_\_\_\_\_ 87. A - 11<sup>1</sup>/<sub>2</sub>" April Showers Vase
- \_\_\_\_\_ 88. A - 11" April Showers Vase
- \_\_\_\_\_ 89. B - 11<sup>1</sup>/<sub>4</sub>" April Showers Vase
- \_\_\_\_\_ 90. M - 8<sup>1</sup>/<sub>2</sub>" Cherry Circle Bon Bon - Nice
- \_\_\_\_\_ 91. **A - Crimped Edge, Dome Base Dugan Dogwood Bowl - Beautiful Irid.**
- \_\_\_\_\_ 92. **A - Inverted Strawberry Creamer - Signed Near Cut**
- \_\_\_\_\_ 93. P - N FTD. Blackberry Bowl - Daisy and Plume Ext. - Super
- \_\_\_\_\_ 94. **Smoke - Fashion Creamer - Very Rare**
- \_\_\_\_\_ 95. **A - Fenton Peacock at Urn Ruffled Bowl - Very Scarce Color**
- \_\_\_\_\_ 96. **P - Hob Star Creamer - Rare Color - Chip on Marie**
- \_\_\_\_\_ 97. Deep Violet - 9" Ruffled Four Flower VT. Bowl - Scarce European
- \_\_\_\_\_ 98. **Red - 7<sup>1</sup>/<sub>2</sub>" Acorn Bowl - Ruffled - Silver Radium**
- \_\_\_\_\_ 99. **Teal - 7" - 6 Ruffle Persian Med. Bowl - Very Scarce Color**
- \_\_\_\_\_ 100. **B - 9<sup>1</sup>/<sub>4</sub>" Collar Base, Peacock and Grape Plate - Very Rare Silver Satin w/Pink Tint**
- \_\_\_\_\_ 101. M - Round Butterfly and Berry Master & 4 Small Bowls - 5 piece set
- \_\_\_\_\_ 102. **B - 7<sup>1</sup>/<sub>4</sub>" Spat. FTD Low Round Stag & Holly - Rare Shape & Color - Base True Green**
- \_\_\_\_\_ 103. **G - Thistle and Waterlily Ext. Banana Bowl - Super Multi Elec. & Rare**
- \_\_\_\_\_ 104. Red - Rooster Painted Back Ground Hat Pin
- \_\_\_\_\_ 105. Red - Rooster Unpainted Background Hat Pin
- \_\_\_\_\_ 106. Sapphire Rooster Hat Pin - Painted
- \_\_\_\_\_ 107. Blue Rooster Hat Pin - Painted
- \_\_\_\_\_ 108. Teal Rooster Hat Pin - Painted
- \_\_\_\_\_ 109. Hat Pins - Choice of Nine (Patterns not known)
- \_\_\_\_\_ 110. **Aqua - Flat 9<sup>1</sup>/<sub>4</sub>" Imperial Grape Plate - Rare Color - Radium Silver Beauty - Dark Aqua**
- \_\_\_\_\_ 111. P - N Grape and Cable 7 pc. Water Set - Always in Demand
- \_\_\_\_\_ 112. G - N Grape and Cable Hat Pin Holder - Hot Item
- \_\_\_\_\_ 113. P - N Small Size Grape and Cable Punch Base - Very Pretty
- \_\_\_\_\_ 114. M - 9" I.C.S., FTD. Waterlily Bowl - Great Irid - Scarce Shape
- \_\_\_\_\_ 115. M - 10", 8 Ruffle Two Flowers FTD. Bowl - Beauty - Unusual Shape & Size
- \_\_\_\_\_ 116. **A - 8 Ruffle N Peacocks Bowl - Rib Back - Striking Multi Irid.**
- \_\_\_\_\_ 117. M - P.C.E. Peacocks Bowl N - Rib Back - Tried to be a Plate

168, 169



217, 218



361

362



281, 278, 277



263



22 VASE

157

157



238, 239, 165

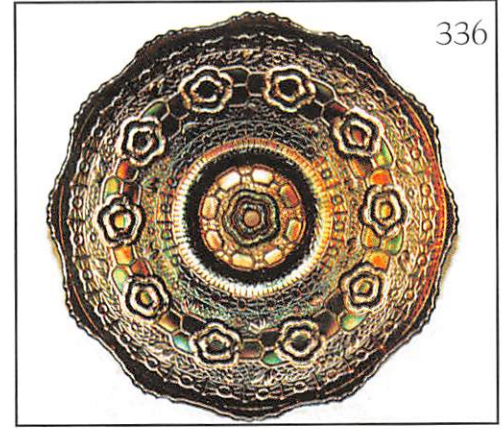
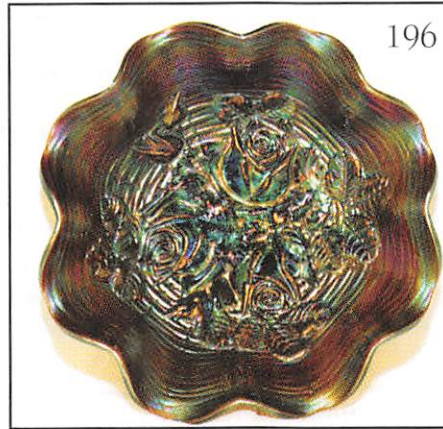
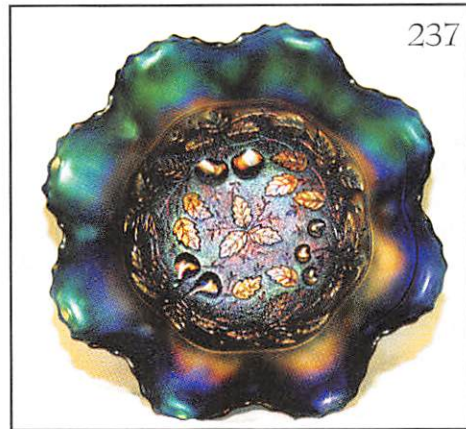
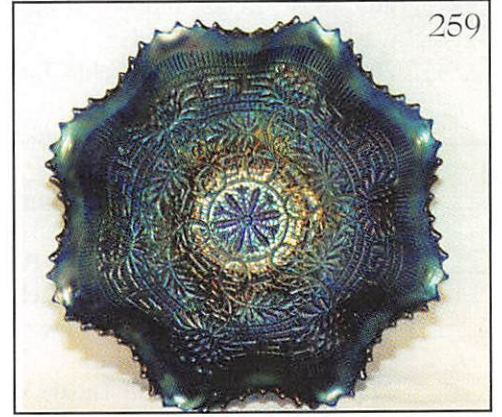
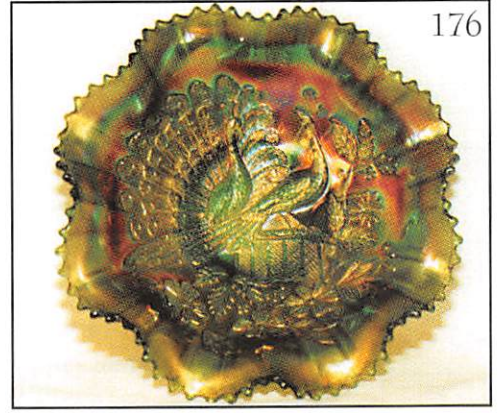
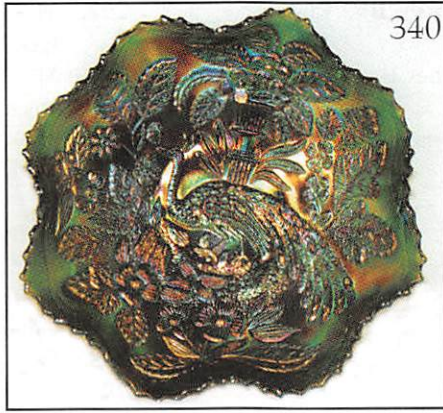


149



- \_\_\_\_\_ 118. **Lav. A 9" Dome Base Dugan Ruffle Vintage Bowl - Scarce Color & Pattern**
- \_\_\_\_\_ 119. G - Birds and Cherries Ruffle Compote - Popular Pattern
- \_\_\_\_\_ 120. P - N Acorn Burrs Tumbler - Always in Demand
- \_\_\_\_\_ 121. **B - Tem Mums Tumbler - Super Multi Irid.**
- \_\_\_\_\_ 122. M - Vineyard Water Pitcher - Beautiful Pinks & Golds
- \_\_\_\_\_ 123. M - Vineyard Tumblers - 3 x \$ - Also Beautiful
- \_\_\_\_\_ 124. **M - Enamel Decorated Magnolia and Drapery Int. Pitcher - Very Scarce**
- \_\_\_\_\_ 125. P.M. or Clam - Imp. 9" Open Rose Plate - Super Example - Blues & Pinks
- \_\_\_\_\_ 126. M - 9" N Stippled Three Fruits Rib Bk. Plate - Dark
- \_\_\_\_\_ 127. P - 8 3/4" N Three Fruits B.W. Plate - Nice Multi Irid.
- \_\_\_\_\_ 128. **Lime I.G. - 9" N Rib Bk. Peacocks Plate - Rare Color and Nice**
- \_\_\_\_\_ 129. **W - 9" Flat Fanciful Plate - Blue and Pink Irid.**
- \_\_\_\_\_ 130. **Smoke - 10" Acanthus Chop Plate - Beautiful Example**
- \_\_\_\_\_ 131. A - Peacock at Fountain Butter Dish, Sugar or Spooner - Choice - Dark Beautiful Multi Irid.
- \_\_\_\_\_ 132. P - N Great Acorn Burrs Sugar Bowl w/Lid
- \_\_\_\_\_ 133. M - N Singing Birds Cream and Sugar - Very Scarce and Pretty Ones
- \_\_\_\_\_ 134. **M - 9", 8 Ruffle Sugar Shape Plaid Bowl - Very Pretty and Scarce In Any Color**
- \_\_\_\_\_ 135. **Clam - 6", 6 Ruffle Octagon Compote - Super Radium Pink & Gold - Also Very Scarce**
- \_\_\_\_\_ 136. Cobalt Blue - FTD Horse Medallion Nut Bowl - Silver Radium
- \_\_\_\_\_ 137. M - 8 1/2" Fantail Int. Round Master Bowl - Scarce and Nice
- \_\_\_\_\_ 138. M - 10" FTD. Deep 8 Ruffle Orange Tree Fruit Bowl - Dark
- \_\_\_\_\_ 139. P - Fruits and Flowers Bon Bon
- \_\_\_\_\_ 140. I.G. - Brocaded Daffodil 2 hdl. 6 1/2" Dish - Good Gold
- \_\_\_\_\_ 141. **Lav. A - 6 1/2" Imperial Grape Plate - Super Multi Radium**
- \_\_\_\_\_ 142. M - 6 1/2" Imperial Grape Plate - Great Ones - A or B - These Are Very Pretty
- \_\_\_\_\_ 143. Deep Purple - 6 3/4" Wishbone and Spades B.W. Ext. Plate - Adv. Souvenir - Sebana Minn. - Super Beauty
- \_\_\_\_\_ 144. P - Grape and Cable Dresser Tray - Great Multi Irid.
- \_\_\_\_\_ 145. **B - Ruffle Rib Back Good Luck Bowl - Elec. Blues, Purples & Golds**
- \_\_\_\_\_ 146. M - Peacock at Fountain Table Set Butter Dish, Spooner, Cr. & Sugar
- \_\_\_\_\_ 147. M - N Raspberry Water Pitcher
- \_\_\_\_\_ 148. **M - N Flute Ext. Water Pitcher - Swirl Int. - Never Seen This Pitcher Before**
- \_\_\_\_\_ 149. **P - Imperial Grape 7 pc. Water Set - Lovely Set**
- \_\_\_\_\_ 150. **Smoke - Imperial Grape Water Pitcher - Very Scarce**
- \_\_\_\_\_ 151. Smoke - Imperial Grape Tumblers - Choice A, B, C
- \_\_\_\_\_ 152. Green, Green - Imperial Grape Water Pitcher
- \_\_\_\_\_ 153. P - Diamond Lace Water Pitcher - Super Irid.
- \_\_\_\_\_ 154. P - Diamond Lace Tumblers - A, B, C Choice
- \_\_\_\_\_ 155. **M - Enamed Cherries Decorated Water Pitcher - Super Rare - Couple Known**
- \_\_\_\_\_ 156. **M - Enamed Decorated Magnolia Vt. Water Pitcher - Plain Int. - Great**
- \_\_\_\_\_ 157. **G - Pair of Rare Inverted Strawberry Candle Sticks - Super Radium - Base Chips**
- \_\_\_\_\_ 158. **Red - 9" Fenton Swirl Flute Vase**
- \_\_\_\_\_ 159. W - 7" Ruffle Grape Vine and Lattice Plate - Irid. Beautiful
- \_\_\_\_\_ 160. M - 6 1/4" 12 Sided Pine Cone Plate - Very Nice
- \_\_\_\_\_ 161. **P.O. - 6 1/2" Dugan C.R.E. Rays Plate - Jeweled Heart Ext. - Scarce Color**
- \_\_\_\_\_ 162. B - Vintage Fenton Nut Bowl
- \_\_\_\_\_ 163. M - 9" Flat Spat. FTD. Fenton Grape and Cable Plate
- \_\_\_\_\_ 164. P - N Grape and Cable Sweet Meat Compote w/Lid - Very Nice
- \_\_\_\_\_ 165. P - Grape and Cable Cologne Bottle - Very Nice One
- \_\_\_\_\_ 166. P - N Grape and Cable Compote Whimsey - Flat Top - Scarce
- \_\_\_\_\_ 167. Lav. A - 6 1/4" Two Sides Up Grape and Cable Card Tray Plate
- \_\_\_\_\_ 168. **6" N Fern Brand Choc. Plate - Multi Satin Rare Little Plate**
- \_\_\_\_\_ 169. **A - 6 3/8" N Fern Brand Choc. Hand Grip Plate - Also Very Rare**
- \_\_\_\_\_ 170. **AO. - Ruffled Rose Show Bowl - Rich Pink and Gold Irid. on this Very Popular Pattern**
- \_\_\_\_\_ 171. **M - Grape and Cable Tankard Water Set - 7 pc. - Very Scarce in a Set**
- \_\_\_\_\_ 172. M - 7 1/2" 8 Ruffle Sq. Shape Fenton Acorns Bowl - Pumpkin
- \_\_\_\_\_ 173. M - 8 1/2" 3 in 1 Edge Autumn Acorns Bowl - Scarce Shape
- \_\_\_\_\_ 174. M - 7 1/4" N Fruits and Flowers Ruffled Bowl - Very Nice
- \_\_\_\_\_ 175. B.A. - 15" Carnival Glass Beads Necklace - A or B
- \_\_\_\_\_ 176. **G - N Ruffled Rib Back Peacocks Bowl - Fabulous Item - Rare Beauty**
- \_\_\_\_\_ 177. B - N P.C.E. Rib Back Stippled Peacocks Bowl - Stippled is Scarce
- \_\_\_\_\_ 178. P - N P.C.E. Rib Back Peacocks Bowl - Super Multi Irid.
- \_\_\_\_\_ 179. **M - N Peacocks Rib Back Plate - Super Pinks, Blues & Golds**
- \_\_\_\_\_ 180. **W - N Peacocks Plain Back Plate - Blues and Pinks - Scarce & Nice**
- \_\_\_\_\_ 181. M - 6 Ruffle Pony Bowl - Nice - Popular Pattern
- \_\_\_\_\_ 182. M - 8 3/4" Ruffle Lotus and Grape Bowl - Very Nice
- \_\_\_\_\_ 183. W - Fenton Flowers Rose Bowl - Sides Go Straight Up - Unusual
- \_\_\_\_\_ 184. **Pastel - P.O. 9" 3 in 1 Collar Base Dragon and Lotus Bowl - Rare**
- \_\_\_\_\_ 185. **P.M. - 8" 3 in 1 Collar Base Dragon and Lotus Bowl - Super Blue and Pink Irid.**
- \_\_\_\_\_ 186. Deep Blue - 8 1/2" I.C.S. Collar Base Dragon and Lotus Bowl - Multi Beauty

- \_\_\_\_\_ 187. G-? - Birds and Cherries 6 Ruffle Compote - Tealish Color Base - Unusual
- \_\_\_\_\_ 188. M - Birds and Cherries Bon Bon - Dark w/Gold Detail
- \_\_\_\_\_ 189. M - Singing Birds Tumbler N
- \_\_\_\_\_ 190. M - Fine Cut and Roses Candy Dish - Fancy Int.
- \_\_\_\_\_ 191. **Amber - 9" Ruffle Orange Tree Bowl - Rare Color - Not Listed - Rare Color**
- \_\_\_\_\_ 192. M - 10" N I.C.S. Peacock at Urn Bowl - Rich Gold w/Pink Hi-Lites
- \_\_\_\_\_ 193. P.O. - 8" Dugan Holly Ruffled Bowl - Lots of Opal
- \_\_\_\_\_ 194. M - N FTD. Wishbone Bowl - Ruffled - Dark and Pretty
- \_\_\_\_\_ 195. **Amber - 9" Open Rose Imperial Plate - Flat - Super Multi Irid. - Top of the Line**
- \_\_\_\_\_ 196. **P - Rose Show Bowl - Super Multi Electric - Scarce Color (Also Tops)**
- \_\_\_\_\_ 197. B - 9" 3 in 1 Ribbon Tie Low Ruffled Plate
- \_\_\_\_\_ 198. A - 9" Fenton Three Fruits Plate
- \_\_\_\_\_ 199. M - 9¼" Spat. FTD. Sun Flower Meander Bowl
- \_\_\_\_\_ 200. **Ultra Rare - Beautiful Blue - Ruffle Good Luck Bowl - Opal Tips - Super Multi Irid. - Outstanding Item - One of a Kind?**
- \_\_\_\_\_ 201. M - 8 sided or Octagon Base Candle Sticks - 7" Pair
- \_\_\_\_\_ 202. M - Hex Base VT. 7" Pair Candle Sticks
- \_\_\_\_\_ 203. **M - Rare Double Scroll, Swirl Base Candle Sticks 8¼" - Rarity**
- \_\_\_\_\_ 204. M - Double Scroll Candle Sticks - 8¼"
- \_\_\_\_\_ 205. **Smoke - Soda Gold 3½" Candle Sticks - Multi Irid.**
- \_\_\_\_\_ 206. **Smoke - 7" Hex Base Candle Sticks - Rare Color**
- \_\_\_\_\_ 207. M - 8" Spiral Candle Sticks - Dark Top to Bottom
- \_\_\_\_\_ 208. M - 8¼" Premium Candle Sticks
- \_\_\_\_\_ 209. M - Fruits and Flowers Bon Bon - Radium Blues, Pinks and Golds
- \_\_\_\_\_ 210. G - 8 Ruffle N Good Luck Bowl - B.W. Ext. - Pink, Gold & Gr. Irid.
- \_\_\_\_\_ 211. M - 8 Ruffle N Good Luck Bowl - B.W. Ext. - Very Nice Example
- \_\_\_\_\_ 212. **M - 9" Spat. FTD. Flat Peacock and Grape Plate - Lot of Pinks and Blues**
- \_\_\_\_\_ 213. M - 9" Leaf Chain Plate - Gold, Silver w/Pink & Blue Center
- \_\_\_\_\_ 214. G - 9" Ruffle B.W. Grape & Cable Bowl - Beautiful Green, Blue & Pink Irid. - Super
- \_\_\_\_\_ 215. **Vas. Ice Green - 8" I.C.S. 3 Row Open Edge Bowl - Rare - Pretty Pastel**
- \_\_\_\_\_ 216. Vas. Opal - Spat. FTD. Peacock and Grape Ruffle Bowl - Rare Color - Nick on Spurs
- \_\_\_\_\_ 217. **Red Amberina - 6¼" FTD. Panthers Ruffle Bowl - Rare & Pretty**
- \_\_\_\_\_ 218. **Red Amberina - 6" FTD. Ruffled Water Lily Bowl - Rare & Pretty**
- \_\_\_\_\_ 219. Celeste - #643 Bon Bon w/Lid - Listed in N Book Pge. 137
- \_\_\_\_\_ 220. Russet - #643 Pattern Covered Bon Bon - Nice Item
- \_\_\_\_\_ 221. M - #643 Pattern Covered Bon Bon - Nice Item
- \_\_\_\_\_ 222. M - Butterfly and Berry Rd. Master Bowl and 5 Small Ones
- \_\_\_\_\_ 223. M - 7" 6 Ruffle Horse Medallion Collar Base Bowl - Very Nice
- \_\_\_\_\_ 224. **P - 11" 6 Ruffle Ski Star Bowl - Gorgeous Tiffany Irid.**
- \_\_\_\_\_ 225. **Smoke - Imperial Grape Handled Basket 9½" Tall - Rare Color**
- \_\_\_\_\_ 226. M - Hen and Chicks Covered Dish
- \_\_\_\_\_ 227. P - Grape and Cable Hat Pin Holder - Always in Demand
- \_\_\_\_\_ 228. B - 9" Collar Base 8 Ruffle Dragon & Lotus Bowl
- \_\_\_\_\_ 229. G - 9" Collar Base 8 Ruffle Dragon & Lotus Bowl - Scarce Collar
- \_\_\_\_\_ 230. **M - 8" I.C.S. Spatula FTD. Dragon and Lotus Bowl - Beauty - How Many Have You Seen**
- \_\_\_\_\_ 231. **G - N Fern Compote - Pink Irid. Ctr. and Beautiful Gold Edges**
- \_\_\_\_\_ 232. P - Spat. FTD. 3 Fruits Medallion Meander Bowl - Elec. Multi Blue & Purple
- \_\_\_\_\_ 233. P - Spat. FTD. 3 Fruits Medallion Meander Bowl - Multi Gold & Purple
- \_\_\_\_\_ 234. P - N Wishbone FTD. Ruffled Bowl - Multi Irid.
- \_\_\_\_\_ 235. **M - 10" Flared Top Mikado Compote - Beautiful Irid.**
- \_\_\_\_\_ 236. **B - 8½" Deep Round Mikado Compote - Magnificent Irid. - Rare Color & Shape - Super**
- \_\_\_\_\_ 237. **B - Spat. FTD. Stippled 3 Fruits Medallion Bowl - Multi Elec. - Great Pattern**
- \_\_\_\_\_ 238. **P - Diamond and Sunburst Decanter - Super Elec. and Very Rare**
- \_\_\_\_\_ 239. **P - Imperial Grape Carafe - Gorgeous Elec. Irid.**
- \_\_\_\_\_ 240. M - 7 Pc. Imperial Grape Wine Decanter Set - Great Set
- \_\_\_\_\_ 241. M - Octagon Decanters - Choice A or B
- \_\_\_\_\_ 242. **A - Diving Dolphins FTD. Bowl - Scroll Embossed Int. - Very Scarce - Radium**
- \_\_\_\_\_ 243. M - Golden Harvest Decanter - Greatly Under Valued Item
- \_\_\_\_\_ 244. M - Golden Harvest Wines - 2 x \$
- \_\_\_\_\_ 245. **G - Grape and Cable Hat Pin Holder - Near Emerald**
- \_\_\_\_\_ 246. **M - Banded Grape and Cable Hat Pin Holder - Very Scarce**
- \_\_\_\_\_ 247. **B - Orange Tree Hat Pin Holder - Multi Irid.**
- \_\_\_\_\_ 248. **M - Beaded Acanthus Milk Pitcher - Dark and Very Scarce**
- \_\_\_\_\_ 249. Smoke - Imperial Poinsettia Milk Pitcher
- \_\_\_\_\_ 250. M - Imperial Poinsettia Milk Pitcher
- \_\_\_\_\_ 251. **P - Dugans 11" Rays Bowl - 8 Ruffle - Like A Farm Yard - Jewel Heart Ext. - Fantastic Irid.**
- \_\_\_\_\_ 252. **G - N Springtime Table Set - Butter Dish, Sugar, Cream & Spooner - Rare Set - Choice?**
- \_\_\_\_\_ 253. P - 9" N Grape and Cable B.W. Plate - Variant - Multi Irid.
- \_\_\_\_\_ 254. A.O. - N Drapery Rose Bowl - Always Desirable
- \_\_\_\_\_ 255. B - 6¼" Cherry Chain Plate - Real Cutie
- \_\_\_\_\_ 256. G - 9" N Three Fruits B.W. Plate - Great One - No Wear



- \_\_\_\_\_ 257. **B - 9" N Stippled 3 Fruits Rib Bk. Plate - Radium Multi Beauty**
- \_\_\_\_\_ 258. **B - 8 3/4" Round FTD. Little Fishes Bowl - Great One**
- \_\_\_\_\_ 259. **B - 8 Ruffle Rib Bk. N Embroidered Mums Bowl - Super Elec.**
- \_\_\_\_\_ 260. **P - N Ruffled Poinsettia Bowl - Scarce Color - Great Pattern**
- \_\_\_\_\_ 261. I.B. - N Poppy Show Bowl - Super & Rare - Chip on Back Edge
- \_\_\_\_\_ 262. M - 7 Pc. Grape Arbor Water Set - Nice Set
- \_\_\_\_\_ 263. **P - 7 Pc. N Oriental Poppy Water Set - Pretty Set**
- \_\_\_\_\_ 264. **Vas. Topaz Yellow - Concave Diamond Pitcher w/Lid - Extremely Rare Offering**
- \_\_\_\_\_ 265. Vas. Topaz Yellow - Concave Dia. Tumbler - Equally Rare Find
- \_\_\_\_\_ 266. P - N Grape and Cable Tankard Water Pitcher - Great Find
- \_\_\_\_\_ 267. P - N Grape and Cable Tankard Tumblers - 4 x \$ - Difficult to Find
- \_\_\_\_\_ 268. **Red - Holly Goblet Shape Compote - Super Cherry Red**
- \_\_\_\_\_ 269. **Cherry Red - 6 1/2" Round Peacock Tail Bowl - 12 Scalloped Edges - Extremely Rare - Few Known**
- \_\_\_\_\_ 270. **Red - 6 Ruffle 2 Row Open Edge Basket - Great Example - Red's Hot!**
- \_\_\_\_\_ 271. M - Pair of 6" Tall Thistle Vases - Great Find for Vase Lovers - A or B
- \_\_\_\_\_ 272. P - 8 1/2" Lattice and Points Vase w/Daisy in Bottom - Multi Elec.
- \_\_\_\_\_ 273. M - 10" Lattice and Points Vase w/ Daisy in Bottom - Pink, Blues & Golds
- \_\_\_\_\_ 274. M - Loganberry Vase - Pinks and Golds
- \_\_\_\_\_ 275. **M - 6 3/4" N Tree Trunk Jester Vase Whimsey - May be 1 of a kind - Super - Rare**
- \_\_\_\_\_ 276. A.O. - 10 1/4" N 4 Pillars Vase - Nice Find
- \_\_\_\_\_ 277. W - 5" Big Basket weave Vase 3 3/4" Top - Multi Irid
- \_\_\_\_\_ 278. **W - 11 1/2" N Tree Trunk Vase - 4 3/4" Base - 5" Top - Very Very Scarce - Mid Size**
- \_\_\_\_\_ 279. M - 6 1/4" Round Lions Bowl - Very Detail Radium
- \_\_\_\_\_ 280. B - P.C.E. N Peacocks Rib Back Bowl - Multi Blue & Purples
- \_\_\_\_\_ 281. **Dark I.B. - Fine Cut and Roses Rose Bowl - A Beauty - Fancy Int.**
- \_\_\_\_\_ 282. G - Fine Cut and Roses Rose Bowl - Scarce Color
- \_\_\_\_\_ 283. P - Fine Cut and Roses Rose Bowl
- \_\_\_\_\_ 284. M - Fine Cut and Roses Rose Bowl
- \_\_\_\_\_ 285. **P.O. - Honey Comb Rose Bowl - Great - Lots of Opal - Almost Moonstone**
- \_\_\_\_\_ 286. M - 10" 3 in 1 Feathered Serpent Bowl - Super Irid - Scarce Shape
- \_\_\_\_\_ 287. M - 10" 8 Ruffle Sq. Shape Cherry Chain Bowl - Sharp Bowl
- \_\_\_\_\_ 288. P - Dome Base Ruffled David and Bows Bowl
- \_\_\_\_\_ 289. G - Spat. FTD. Sunflower Bowl - Meander Ext. - Scarce Color
- \_\_\_\_\_ 290. B - 2 Sides Up Persian Medallion Bon Bon
- \_\_\_\_\_ 291. M - N Leaf Beads Sunflower Nut Bowl - Very Scarce Shape
- \_\_\_\_\_ 292. **M - Scroll Embossed Compote - Curved Star Ext. Pink Super Radium Beauty**
- \_\_\_\_\_ 293. M - N Dandelion Tumbler - 4 x \$ - Very Pretty Ones
- \_\_\_\_\_ 294. M - Large Size 3 in 1 Ruffle Large Persian Medallion Compote
- \_\_\_\_\_ 295. M - Octagon Butter Dish - Dark - Scarce - Very Pretty
- \_\_\_\_\_ 296. G - 9 1/2" 3 in 1 Fenton Vintage Bowl - Great Irid.
- \_\_\_\_\_ 297. **Tealish Green - 10" Fenton Holly Plate - Rare Color - Glows Under Black Lite**
- \_\_\_\_\_ 298. **Lav. - 9 3/4" Fenton Holly Plate - Radium - Rare**
- \_\_\_\_\_ 299. **M - Mlbg. 6 Ruffle Radium Trout and Fly Bowl - Blue Irid on Trout**
- \_\_\_\_\_ 300. **G - 9" Concord Plate - Super Rare Plate - Lots of Blues and Pink Irid. - Photo Don't Show**
- \_\_\_\_\_ 301. **Lav. - 9" Concord Plate - Also Rare w/Purple, Blue & Gold Irid. - Great**
- \_\_\_\_\_ 302. P - N Greek Key Ruffled B.W. Bowl - Purple & Gold Irid.
- \_\_\_\_\_ 303. P.O. - 10 1/2" 8 Ruffle Ski Star and Compass Bowl - Scarce Shape
- \_\_\_\_\_ 304. **G - 10 1/2" Collar Base Mlbg. 3 in 1 Fleur De Lis Bowl - Satin Multi**
- \_\_\_\_\_ 305. **M - 10 1/4" Mlbg. I.C.S. Peacock at Urn Bowl - Satin Pinks, Blues & Golds**
- \_\_\_\_\_ 306. **G - 10" Mlbg. 3 in 1 Blackberry Wreath Bowl - Multi Radium**
- \_\_\_\_\_ 307. B - 9" Fenton Orange Plate w/Trunk - Scarce w/Trunk
- \_\_\_\_\_ 308. M - 9" N Stippled 3 Fruits Rib Neck Plate
- \_\_\_\_\_ 309. **Purple - 8" Beaded Bullseye Vase - 5 1/2" Wide Mouth Top - Elec.**
- \_\_\_\_\_ 310. **M - 8 1/4" Imperial Octagon Vase on Ped. - Scarce Item**
- \_\_\_\_\_ 311. M - 6" Heavy Diamonds Vase - Scarce
- \_\_\_\_\_ 312. G - 7 1/2" Squatty N Feathers Vase - Alaskan Irid. - 5" Top
- \_\_\_\_\_ 313. **P - 11" Target Vase - Very Scarce Multi Radium**
- \_\_\_\_\_ 314. **M - 8 3/4" Lined Lattice Vase - Super Irid. & Dark**
- \_\_\_\_\_ 315. M - 10" Big Basket weave Vase
- \_\_\_\_\_ 316. **A - Peacock at the Fountain Tumbler - Scarce Color**
- \_\_\_\_\_ 317. **M - Strawberry Scroll Tumbler - Very Scarce & Desirable**
- \_\_\_\_\_ 318. **A - Checkerboard Tumbler - Rare in any Color**
- \_\_\_\_\_ 319. **B - God In Home Tumbler - Ranks High in Tumbler Collecting**
- \_\_\_\_\_ 320. **A - Double Star Tumbler - Super Radium - Also Very Rare**
- \_\_\_\_\_ 321. A - N Peacocks Plate - Rib Back - Super Multi - One of the Best
- \_\_\_\_\_ 322. Beautiful Ice Blue - Fruits and Flowers Bon Bon
- \_\_\_\_\_ 323. **B - Kittens Toothpick Holder or Vase - One of the Nicer Ones**
- \_\_\_\_\_ 324. M - 9 3/4" Fenton Holly Plate - Great One
- \_\_\_\_\_ 325. M - 7 1/2" Leaf Chain Plate - Super Pinks w/Blue Hi-Lites
- \_\_\_\_\_ 326. **M - 9 1/2" Pumpkin Poppy Show Plate - Super Pinks & Golds - The Best**



- \_\_\_\_\_ 327. **Lav. Smoke - Horehound? - 9½" Rose Show Plate - Beautiful Ultra Rare Pastel Plate**
- \_\_\_\_\_ 328. M - 9" N 3 Fruits B.W. Plate - Pinks & Blues - No Scratches
- \_\_\_\_\_ 329. M - 7½" Wild Strawberry Hand Grip Plate - Rich Pinks - Scarce Item - A Beauty
- \_\_\_\_\_ 330. **A - 7½" Fenton Vintage Plate - Radium - Very Pretty**
- \_\_\_\_\_ 331. **M - 8" 2 Row Open Edge Plate - Very Rare Plate - Flat**
- \_\_\_\_\_ 332. **B - 9" Leaf Chain Plate - Multi Satin - Rare Size in Blue**
- \_\_\_\_\_ 333. G - 9" N Strawberry Plate - B.W. Ext. - Elec. Green & Pink Irid.
- \_\_\_\_\_ 334. M - 9" Imperial Grape Plate - Super Radium - Best I've Seen - Multi Beauty
- \_\_\_\_\_ 335. G - 9" Captive Rose Flat Plate - Scarce Color - Satin Gold & Silver
- \_\_\_\_\_ 336. **B - 9" Captive Rose Plate - One of the Best I've Seen**
- \_\_\_\_\_ 337. B - 9" Orange Tree Plate - Super Item w/Trunk
- \_\_\_\_\_ 338. M - Fenton Peacock at the Urn Plate - Super Pinks on Dark Marigold
- \_\_\_\_\_ 339. B - Fenton Peacock at the Urn Ruffle Bowl - Fantastic Elec. Irid.
- \_\_\_\_\_ 340. G - Fenton Peacock at the Urn Ruffle Bowl - Fantastic Elec. Irid & Rare Color
- \_\_\_\_\_ 341. Pumpkin M - P.C.E. Rib Back Good Luck Bowl - Super Golds, Gr. & Pinks
- \_\_\_\_\_ 342. **M - 9" N Good Luck B.W. Plate - Variant - Less Berries - Very Few Known**
- \_\_\_\_\_ 343. **B - 8" I.C.S. Peter Rabbit Bowl - Best Irid. I've Seen on this Bowl - Plus Very Rare**
- \_\_\_\_\_ 344. **P - Violet - 9" Imperial Grape Plate - Rare w/Super Multi Radium Irid**
- \_\_\_\_\_ 345. P - 9" Imperial Grape Low Ruffled Plate or Bowl
- \_\_\_\_\_ 346. M - N Beaded Cable Rose Bowl - Pretty Top to Bottom
- \_\_\_\_\_ 347. A.O. - N Drapery Rose Bowl - Old Favorite
- \_\_\_\_\_ 348. **Horehound - N Bushel Basket**
- \_\_\_\_\_ 349. B - N Bushel Basket - Alaskan Irid. - Very Unusual - Dye Run in Base
- \_\_\_\_\_ 350. **A.O. - N Bushel Basket - Scarce and Pretty**
- \_\_\_\_\_ 351. Deep Blue - N Bushel Basket
- \_\_\_\_\_ 352. **I.G. - 8 Sided N Bushel Basket - Rare Color**
- \_\_\_\_\_ 353. M - N 8 Sided Bushel Basket - Scarce Color
- \_\_\_\_\_ 354. W - N 8 Sided Bushel Basket - Pinks and Greens
- \_\_\_\_\_ 355. A - N 8 Sided Bushel Basket
- \_\_\_\_\_ 356. **Amber - Imperial Open Rose Rose Bowl - 4¾" Opening - Very Scarce and Under Valued**
- \_\_\_\_\_ 357. Aqua - N Raspberry Gravy Boat
- \_\_\_\_\_ 358. G - N Raspberry Gravy Boat
- \_\_\_\_\_ 359. P - N Raspberry Gravy Boat
- \_\_\_\_\_ 360. **Elec. B - Ruffle Poppy Show Bowl - Super - w/Soft Touches of Pink**
- \_\_\_\_\_ 361. Celeste - 10½" Florentine Candle Sticks - Stretch Frost
- \_\_\_\_\_ 362. I.G. Vas. - 10½" Florentine Candle Sticks - Glowing
- \_\_\_\_\_ 363. M - 10½" Florentine Candle Sticks - Dark Top to Bottom
- \_\_\_\_\_ 364. Russet - 8½" Florentine Candle Sticks - Frosty Pink & Bl.
- \_\_\_\_\_ 365. M - 8½" Florentine Candle Sticks - Dark Top to Bottom
- \_\_\_\_\_ 366. Vas. - 7½" 8 Ruffle Acorn Bowl - Vaseline is Hot
- \_\_\_\_\_ 367. Lav. P - N Singing Birds Mug - Multi Elec.
- \_\_\_\_\_ 368. A - Grape Delite Rose Bowl - Radium Beauty
- \_\_\_\_\_ 369. B - N Leaf Beads Rose Bowl
- \_\_\_\_\_ 370. **Lav. P - 7½" Imperial Shell and Sand Bowl - Super Multi Elec.**
- \_\_\_\_\_ 371. P - N Raspberry Water Pitcher
- \_\_\_\_\_ 372. B - 9½" Large Blackberry & Butterfly Berry Bowl - Ruffled - Scarce
- \_\_\_\_\_ 373. M - 10 Ruffled Pony Bowl - Beauty - Scarce Shape
- \_\_\_\_\_ 374. M - N Wild Rose Bowl - Dark - FTD. Open Edge - Very Pretty
- \_\_\_\_\_ 375. G - N Fruits and Flowers Bon Bon - Quality Example
- \_\_\_\_\_ 376. P - N Fruits and Flowers Bon Bon - Quality Example Also
- \_\_\_\_\_ 377. **G - N P.C.E., B.W. 3 Fruits Bowl - Very Nice - Scarce Shape**
- \_\_\_\_\_ 378. **Amber - 7½" Ripple Vases - 4¾" Tops - Very Scarce Color - A or B**
- \_\_\_\_\_ 379. **P.O. - 12½" Pulled Loop Vase - Opal Top to Bottom**
- \_\_\_\_\_ 380. M - Signed Nu-Art Rib & Stipple Light Shades
- \_\_\_\_\_ 381. P.O. - 10¼" 6 Ruffle Petal and Fan Bowl - Pretty One
- \_\_\_\_\_ 382. W - N Fine Cut and Roses FTD. Candy Dish - Fancy Int.
- \_\_\_\_\_ 383. A - N Fine Cut and Roses FTD. Candy Dish - Plain Int.
- \_\_\_\_\_ 384. M - 7" Low I.C.S. Mlbg. Blackberry Wreath Bowl - Radium
- \_\_\_\_\_ 385. A - 10" 6 Ruffle Mlbg. Holly Whirl Bowl - Satin & Nice
- \_\_\_\_\_ 386. **M - N Interior Swirl Tumbler - Very Scarce and Great One**

**SEVERAL UNNUMBERED PIECES  
SOLD AT END OF AUCTION**

**THANK YOU**  
WE APPRECIATE YOUR BUSINESS!  
BOTH BUYER AND SELLER  
GIVE ME A CALL  
WHEN YOU'RE  
READY FOR YOUR AUCTION  
*Mickey Reichel*

144

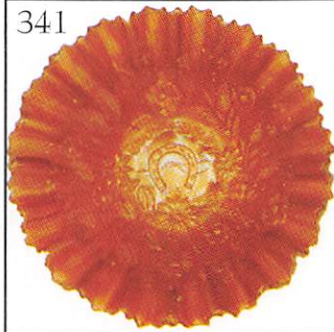


236  
BOTTOM

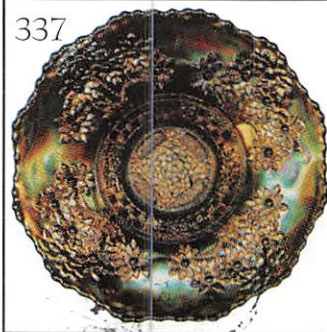
297



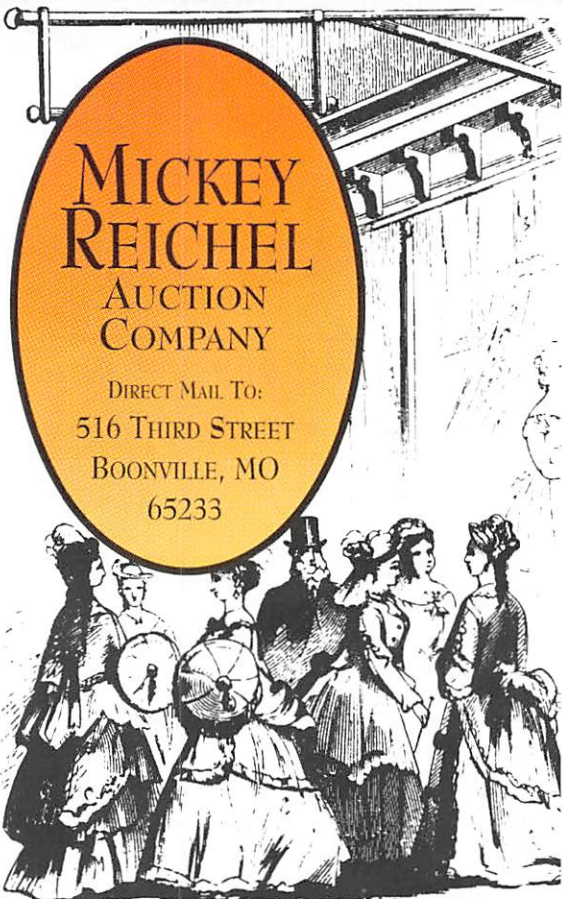
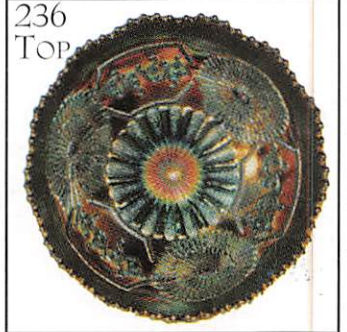
341



337

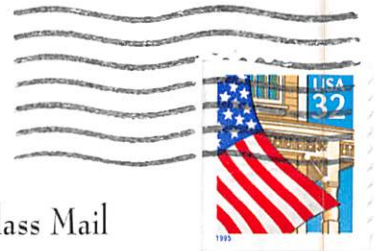


236  
TOP

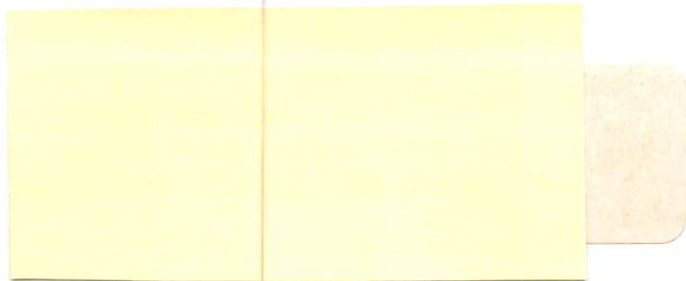


**MICKEY  
REICHEL**  
AUCTION  
COMPANY

DIRECT MAIL TO:  
516 THIRD STREET  
BOONVILLE, MO  
65233



First Class Mail



"EXCITEMENT BUILDS AS THE CROWD GATHERS AT THE MICKEY REICHEL AUCTION COMPANY!"