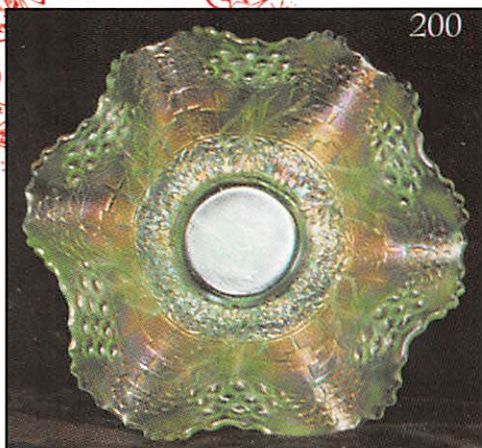


SPECTACULAR CARNIVAL GLASS AUCTION

Saturday, June 28, 1997, 9:00 a.m.

(Note Time Change 9:00 a.m. C.D.S.T.)

Boonville, Missouri



Held Inside the Mickey Reichel Auction Center
1 Mile North of I-70 on Hwy. 5, Exit 101, Boonville, Missouri • 20 Miles West of Columbia, MO on I-70



Held Inside the Mickey Reichel Auction Center

1 Mile North of I-70 on Hwy. 5, Exit 101, Boonville, Missouri • 20 Miles West of Columbia, MO on I-70
 Preview Friday 12 p.m. - 6 p.m. and 7:30 a.m. - 9 a.m. Day of Auction

Make Reservations **NOW** at one of these local motels:

Comfort Inn: 816-882-5317 • Super 8 Motel: 816-882-2900 • Days Inn: 816-882-8624

THIS IS THE 40 YEAR COLLECTION OF A SINGLE COLLECTOR - SOLD WITH NO RESERVES - NO BUYERS PREMIUM

WRITE IN BIDS: If you are unable to attend the auction, we will be happy to accept absentee bids which must be received by THURSDAY, June 26, 1997. Don't Delay. **FOR AUCTION PRICE RESULTS:** Send S.A.S.E and \$3.00 to 516 Third Street, Boonville, MO 65233.

PLEASE NOTE: There is a \$5 handling charge for each successful bid which will be added to the selling price for all write-in bids. This is in addition to the cost of postage, insurance and packing. Your write-in bid will be entered just as if you are present and bidding. Successful bidders will be notified in 1 to 3 days by the auctioneer (so be sure to include your phone number). Direct mail bids to Auctioneer **Mickey Reichel, 516 Third Street., Boonville, MO 65233-1536.** Terms: Cash or Check accepted with proper I.D. and Social Security Number and References. Announcements made day of the auction supercede all printed material. Not Responsible for Accidents or Sold Items. **No return on any items once they leave the Auction Center (No Exceptions).**

Call for additional information: 816-882-5292 days or 816-882-5283 evenings.

FAX: 816-882-5292 (evening hours start FAX transmission after beep)



**NOTE: Remember Auction Starting Time
 1/2 Hour Early.**

**Make reservations at motel early.
 Boonville Heritage Days Same Weekend.**

- | | |
|--|---|
| _____ 1. M - Hobstar Band Variet Tumbler - Radium - Scarce | _____ 25. B - 6 1/4" Cherry Chain Plate - Orange Tree Ext. |
| _____ 2. B - Dugan, Peacock at the Fountain Tumbler - Super | _____ 26. M - 6 1/4" Cherry Chain Plate - Orange Tree Ext. - Radium |
| _____ 3. M - Crab Claw - Tumbler - Great - Pin Head Chip On Top | _____ 27. P - 6 1/2" Imp. Grape Plate - Scarce Little Beauty |
| _____ 4. M - Diamond and Daisy Cut - Tumbler - Dark Radium - Scarce | _____ 28. M - 6 1/4" Imp. Grape Plate - Dark and Very Nice |
| _____ 5. M - Panelled Dandelion - Tumbler - Great One | _____ 29. A - 6 1/8" Scales Plate - Nice Radium |
| _____ 6. P - Diamond Lace Tumbler - Great One | _____ 30. M - 6 3/4" Flat Stippled Rays and Scale Band Plate |
| _____ 7. M - Apple Tree Tumbler - Nice Radium | _____ 31. P.M. - 7" Fish Scales and Beads Plate - Super Blues and Pinks |
| _____ 8. A - Mlbg. Diamond Tumbler - Great Radium | _____ 32. P.O. - 9 3/4" Spiralex Vase - Spirals to the Left |
| _____ 9. I.B. - or Celeste - Con Cave Diamond Tumbler - Dark | _____ 33. M - 11 1/4" Imp. Morning Glory J.I.P. Vase - Super Radium |
| _____ 10. P - Heavy Iris Tumbler - Multi Electric | _____ 34. M - 7" Imp. Swirl Morning Glory Vase - 5 1/2" Top |
| _____ 11. B - Blueberry Tumbler - Elec. Green & Multi - Super | _____ 35. Olive Russet - 11" Four Pillars Vase - Rib Int. - Scarce Color - Nice |
| _____ 12. P - Raspberry - Super Elec. Tumber | _____ 36. M - 8 1/4" Tall Twigs Bud Vase - Dark and Nice |
| _____ 13. Amber - 9" Imp. Stippled Open Rose Plate - Super & Dark | _____ 37. Red - Amberina Base, Fashion Punch Cup - Very Rare Imperial Pc. |
| _____ 14. M - 9" Imp. Stippled Open Rose Plate - Great Pinks & Blues | _____ 38. Red - 4 Sided, Open Edge Basket - Scarce Shape and Nice |
| _____ 15. P.M. - 9" Imp. Stippled Open Rose Plate - Great Golds, Pinks, & Blues - Nick On Back - Marie | _____ 39. Red - 6 Ruffle - 7 1/4" Leaf Chain Bowl - Minor Factory Flaw in Base |
| _____ 16. B - 6 Ruffle, Fenton Peacock at the Urn Bowl - Elec. Blues & Pinks | _____ 40. A - 10" Mlbg. I.C.S. Hanging Cherries Bowl - Radium - Very Scarce |
| _____ 17. G - 8 Ruffle, Fenton Peacock at the Urn Bowl - Elec. Golds & Pinks | _____ 41. M - 10" Mlbg. I.C.S. Hanging Cherries Bowl - Great Pink & Blue Satin |
| _____ 18. A - 8 Ruffle, Fenton Peacock at the Urn Bowl - Scarce Color | _____ 42. M - 7" Mlbg. Round Flared Out Hanging Cherries Bowl - Satin |
| _____ 19. M - 8" - I.C.S. Fenton Peacock at the Urn Bowl - Great, Scarce Shape | _____ 43. M - 8 3/4" Mlbg. 3 in 1 - Blackberry Wreath Bowl - Pink Satin |
| _____ 20. G - 8 3/4" - 8 Ruffle - Collar Base Peacock and Grape Bowl - Super Multi | _____ 44. G - 8" Mlbg. Round Mayan Bowl - Radium Green & Blues - Super Example |
| _____ 21. G - 8 3/4" 8 Ruffle Lotus and Grape Bowl - Scarce Color - Very Nice | _____ 45. A - Mlbg. Holly Sprig Tri-Corner Nappy - Radium |
| _____ 22. B - 6" Persian Medallion Plate - Orange Tree Ext. | _____ 46. A - 3 in 1 - Collar Base - Dragon & Lotus Bowl - Scarce Color |
| _____ 23. M - 6 1/2" Persian Medallion Plate - Orange Tree Ext. - Very Nice | _____ 47. Vas. Opal - 8 1/2" Collar Base - Dragon and Lotus Bowl - 3 in 1 - Rare |
| _____ 24. M - 6 1/4" Persian Medallion Plate - Plain Ext. A or B | _____ 48. M - 10" Mlbg. - 6 Ruffle - Whirling Leaves Bowl - Satin Pink & Blue |
| | _____ 49. A - 10" Mlbg. 3 in 1 - Collar Base - Fleur-De-Lis Bowl - Deep Satin - Very Scarce Shape |
| | _____ 50. Rare Mauve-Lav.-Pastel - 7 1/4" Mlbg. Court House Bowl - Super Satin - Possible 1 of a Kind |
| | _____ 51. Teal G - 8" Imp. Heavy Grape Plate - Very Pretty - Glows Under Black Lite |
| | _____ 52. M - 8" Imp. Heavy Grape Plate - Thick Blue, Pink, Irid |
| | _____ 53. Lav. - 7 1/4" Plain Front - Beads and Flowers Ext. - |

- Dugan Tri - Corner Plate - Scarce
54. P.O. - 7¼" Plain Front - Beads and Flowers Ext. - Dugan Tri - Corner Plate
55. B - 7¼" Leaf Chain Plate - Grapes Ext.
56. M - 7½" Leaf Chain Plate - Grapes Ext. - Dark and Nice
57. P - 6¼" C.R.E. Dugan Rays Plate - Jeweled Heart Ext. - Multi Blue & Pinks
58. A - 6" N Grape and Cable Hand Grip Plate
59. **A - 7¼" N Grape and Cable VT. BW. Plate - Leaf Center - Nice One**
60. M - 6" Plain - Waterlily and Cattail Ext. Plate
61. P - 6½" C.R.E. Dugan Cherries Plate - Jeweled Heart Ext. - Scarce
62. **P - 6½" Wishbone and Spades Plate - B.W. Ext. - Multi - Irid - Scarce**
63. Lav. P - N Dandelion Tumbler - Great Multi Elec. Irid.
64. M - N Dandelion Tumbler - Pink & Golds
65. **W - N Dandelion Tumbler - Great Blues and Pinks - Scarce Color**
66. G - Butterfly and Fern Variet Tumbler - Great Multi Satin
67. M - Butterfly and Fern Tumbler w/Ground Base - Dark Pinks & Blues
68. G - Mlbg. Cherries Tumbler - Radium - Very Scarce - Chip on Top Edge
69. M - Mlbg. Cherries Variet Tumbler - Radium & Scarce
70. **B - Mlbg. Hobnail Tumbler - Rare - Rare - Not Many Known**
71. **A - Mlbg. Hobnail Tumbler - Rare - Also Few Known**
72. **Dark Firey Red Amythest - Circle Scroll Tumber - Very Rare**
73. **Lav. A - Perfection Tumbler - Radium - Another Great One**
74. G - Marilyn Tumber by Mlbg. - Ground Base - Rare Color
75. Lav. A - Chatelaine Tumbler - Rates High on Collectors List
76. B - 9½" Orange Tree Plate
77. W - 9½" Orange Tree Plate
78. **M - 9½" Orange Tree Plate - Golds, Pinks and Blues - Very Nice**
79. Clam. - 9½" Orange Tree Plate - Lots of Blues and Pinks
80. **P - 9" N Stippled Three Fruits Plate - Great Multi Irid. - Beauty - No Scratches**
81. A - 9" N Three Fruits B.W. Plate - Very Nice Example
82. **M - 9" N Three Fruits B.W. Plate - Sunset Golds and Pinks**
83. A - 9½" - 12 Sided Fenton Three Fruits Plate - Light Wear on Fruit
84. M - 9" Wind Flower Plate - Radium
85. **M - 9¼" Fenton Holly Plate - Great Example - Golds, Blues & Pinks**
86. **B - 9¼" Fenton Holly Plate - Great Multi-Elec. Irid.**
87. P.O. - Honey Comb Rose Bowl - Great Example - Base Crack
88. B - 6" FTD. Water Lilly Sauce - Very Pretty
89. **A - 4½" Kittens Plate - 4 Sets of Kittens - Rare Color**
90. **A - 2 Sides Up Kittens Card Tray - Rare Color -**
- 4 Sets Kittens**
91. **Powder Blue Base - 4½" Kittens Plate - 4 Sets of Kittens - Rare Color**
92. **M - 4½" Kittens Plate - 2 Sets of Kittens - A or B - Rare**
93. M - 4½" Kittens Plate - 4 Sets of Kittens - A or B
94. **B - 4 Sets of Kittens Vase or Tooth Pick - Rare - A or B**
95. M - 4 Sets of Kittens Vase or Tooth Pick - A or B
96. M - Kittens Cup - 2 Sets of Kittens - A or B
97. Celeste - Swan Salt
98. Florentine I.G. - Swan Salt - Glows under Black Lite
99. W - Grape De-lite FTD. Rose Bowl - Beautiful Blue & Pink Irid
100. **Butterscotch - M - Regal Iris Gone w/The Wind Lamp - Super Radiums - Very Rare - Few Known**
101. M - Grape & Cable Whimsey Pin Dish from Punch Cup
102. P - N Fruits and Flowers Stem Bon Bon
103. P.O. - 3 in 1 Crimped Dugan Rain Drops Bowl
104. M - 3 in 1 Edge Fenton Peacock and Urn Bowl - Scarce Shape
105. M - 8 Ruffle Fenton Peacock and Urn Bowl - A Beauty
106. **M - 9¼" Mlbg. Whirling Leaves - Great Radium Bowl**
107. **A - 10" Mlbg. I.C.S. Blackberry Wreath Bowl - Scarce Radium**
108. G - 8½" Mlbg. I.C.S. Blackberry Wreath Bowl - Radium
109. G - 9" Mlbg. 6 Ruffle Blackberry Wreath Bowl - Radium - Scarce Shape
110. **M - 8" Tri-Corner Radium Mlbg. Holly Sprig Bowl - Rare Beauty**
111. M - 8¼" Mlbg. 3 in 1 Trout and Fly - Radium - Peeling on Edges
112. **G - 10½" Mlbg. 6 Ruffle Great Satin Rosalind Bowl**
113. A - 10½" 6 Ruffle Mlbg. Rosalind Bowl - Satin
114. **G - Birds and Cherries Compote - Super Color**
115. Pastel - P.O. - 8½" Apple Blossoms Twigs - 3 in 1 Crimp Bowl - Satin
116. **P.O. - 9" x 8" Ski Star - C.R.E. - Dome FTD. Brides Basket Shape Bowl**
117. P.O. - 7½" Ski Star, 3 Corner, Dome FTD. Bowl - Super Irid.
118. P.O. - Star Fish 2 Handle Bon Bon - Scarce - Stemmed - Lots Opal
119. P.O. - Star Fish Ruffle Stemmed Compote - Lots of Opal
120. P.O. - 5¼" 8 Ruffle - Wishbone and Spades - BW. Ext. Bowl
121. **P.O. - Miniature Intaglio Basket w/Original Wire Handle - Souvenir - Chicago**
122. B.A. - Bars and Beads Hat Pin - Great Example
123. B.A. - Basketweave Hat Pin - Satin Blue Irid.
124. B.A. - Sun Flower Basket Hat Pin or Basket Flower
125. B.A. - Bumble Bees Hat Pin
126. **B.A. - Cherries Hat Pin - Rare**
127. **B.A. - Compass or Pin Wheel Hat Pin - Very Scarce**
128. **B.A. - Elegence Hat Pin - Super**
129. **B.A. - Elegence Variant (Small) Hat Pin - Super & Rare**

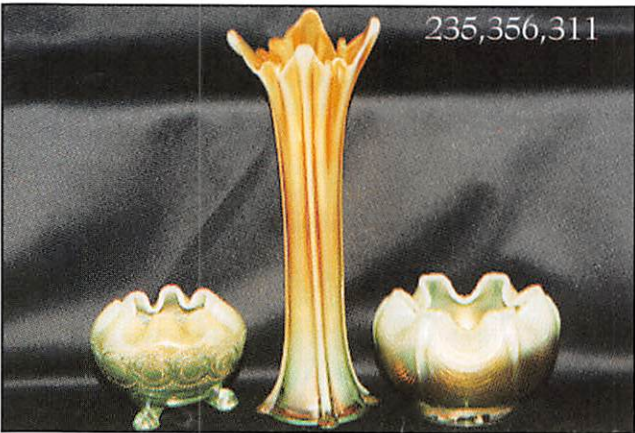
370, 360



281,194,400



235,356,311



355,302,352



384, 329, 419



373,372,374

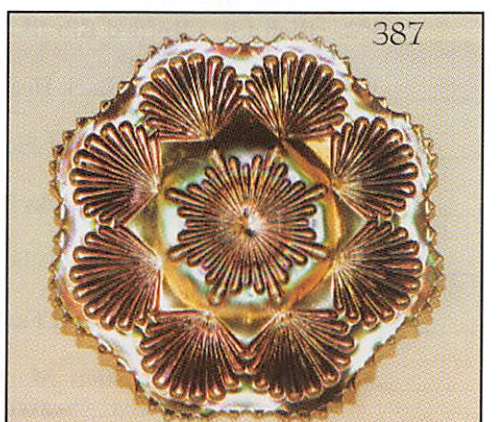
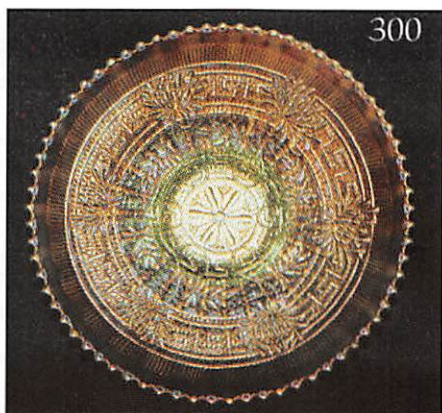
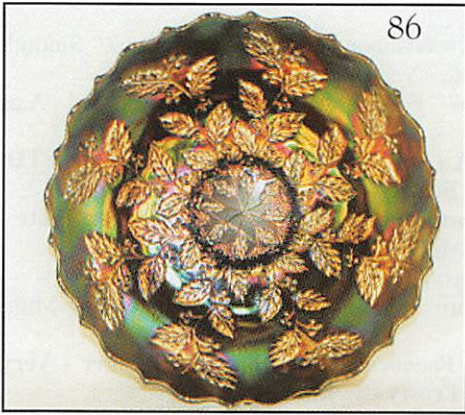


148,358,147



- _____ 130. B.A. - Hex Dome Faceted Hat Pin
- _____ 131. **B.A. - Star Center Hat Pin - Super and Rare**
- _____ 132. **B.A. - Star Center Variant (Small Hat Pin) Very Rare - Super**
- _____ 133. B.A. - Triads Hat Pin - Super Example
- _____ 134. B.A. - Facted Diamonds Hat Pin - Very Neat and Pretty
- _____ 135. B.A. - Tufted Throw Pillot Hat Pin - Great Irid.
- _____ 136. B.A. - Scarab Hat Pin - Always Desirable
- _____ 137. B - Orange Tree Hat Pin Holder - Elec. Blue & Golds
- _____ 138. G - Grape and Cable Hat Pin Holder - Normanl Roughness 1 Foot
- _____ 139. P - Grape and Cable Hat Pin Holder - Great - Same Chip on 1 Foot
- _____ 140. M - Grape and Cable Hat Pin Holder - Great - Minor Roughness on Foot
- _____ 141. **M - Town Pump - Rare and Super - Handle Crack**
- _____ 142. P - Town Pump - Super IRid - Epoxy on Spout
- _____ 143. **A - 21½" Rustic Funeral Vase - 7½" Top - Rare Beauty w/Plunger Base**
- _____ 144. **M - 17½" Rustic Funeral Vase - 8½" Flame Flare Top - Super One**
- _____ 145. **Saph. - 14" Thin Rib Vase - Fantastic w/No Overlay - Mid Size - Gold Trim**
- _____ 146. W - 9" Rustic Vase Frosty Pinks and Blues
- _____ 147. W - 10" Lined Lattice - Great Blues, Purples and Golds
- _____ 148. W - 10¾" Big Basketweave - Great Blues, Pinks, etc.
- _____ 149. I.G. - N Drapery Vase - A Beauty - Chips on Toes - 7¼"
- _____ 150. **M - 8½" N Drapery Vase - Super Irid. - Minor Tiny Toe Nick**
- _____ 151. Smoke - 6" Morning Glory Vase - 4½" Top - Radium
- _____ 152. P - 7½" Morning Glory Vase - 3" Top - Multi Elec.
- _____ 153. M - 5¼" Morning Glory Vase - 4" Top - Nice Example
- _____ 154. P.M. - 8" Morning Glory Vase - 3¼" Top - Beauty
- _____ 155. **A - 9¼" Mlbg. Round Deep Peacocks Bowl - Radium**
- _____ 156. **A - 5½" Mlbg. Round Deep Peacocks Bowls - A, B, C, D, E, or F - Choice**
- _____ 157. M - 7" Imp. 3 in 1 Pattern Plate - Lots of Pinks and Blues
- _____ 158. Smoke - 7½" Round Frosted Block Imp. Plate - Radium Beauty
- _____ 159. **P - 7" C.R.E. Honey Comb and Beads Plate - Super Elec.**
- _____ 160. **P.O. - 7" C.R.E. Honey Comb and Beads Plate - Dark Thick Satin**
- _____ 161. **P.O. - 6½" Ski - Star and Compass Plate - Lots of Opal**
- _____ 162. P.O. - 6¾" Four Flowers Plate - Plain Ext. - Very Flat
- _____ 163. B - P.C.E. Good Luck Bowl - Rib Bk. - Striking Blues, Purple & Golds
- _____ 164. G - P.C.E. Good Luck Bowl - B.W. Ext. - Scarce - w/B.W. Back
- _____ 165. M - P.C.E. Good Luck Bowl - Rib Bk. - Super Pinks, Golds & Greens
- _____ 166. G - 9" Greek Key Plate - B.W. Ext. - Scarce Item
- _____ 167. **Lav. - 9½" Imp Low, Low, Ruffle Imp. Pansy Plate - Super Radium**
- _____ 168. **A - 9¼" Heart and Vine Plate - Great One - Beautiful Center**
- _____ 169. **G - Grape and Cable Powder Jar w/Lid - Radium Blues, Greens & Golds**
- _____ 170. A - Grape and Cable Powder Jar w/Lid - Multi Irid - Very Nice
- _____ 171. M - Grape and Cable Powder Jar w/Lid - Very Nice - Sm. Lid Chip
- _____ 172. M - Orange Tree Powder Jar w/Lid - Nice Example - Lid O.K.
- _____ 173. **M - Inverted Strawberry Powder Jar w/Lid - Scarce - Nice Match**
- _____ 174. **M - Wild Berry Covered Powder Jar - Very Rare and Pretty**
- _____ 175. B - Orange Tree Mug - 3½" Top - Great Radium Multi Irid.
- _____ 176. M - Orange Tree Mug - 3½" Top - Great Radium Irid.
- _____ 177. G - Singing Birds Mug - A or B - Both Nice
- _____ 178. **P - Singing Birds Mug - Multi - Electric**
- _____ 179. M - Singing Birds Mug - Pinks, Golds & Blues
- _____ 180. **M - Beaded Shell Mug - Great One - Much Rarer than People Think**
- _____ 181. M - Bo-Peep Mug - Radium and Scarce
- _____ 182. W - 8 Sided Bushel Basket - Frosty
- _____ 183. P - 8 Sided Bushel Basket - Always Desirable
- _____ 184. M - 8 Sided Bushel Basket - Always Desirable
- _____ 185. B - Horse Medallion Rose Bowl - Very Pretty & Scarce
- _____ 186. **B - Stork and Rushes Pitcher - Rare Pitcher**
- _____ 187. B - Stork and Rushes Tumbler
- _____ 188. M - Mlbg. Diamonds Pitcher - Multi Satin
- _____ 189. M - Mlbg. Diamonds Tumbler - Satin
- _____ 190. **I.B. - Grape Arbor Tankard - Frosty Blues and Pinks and Very Rare**
- _____ 191. **I.B. - Grape Arbor Tumbler - Also Very Scarce and Nice**
- _____ 192. M - Heavy Iris Tankard Pitcher - Radium Top to Bottom
- _____ 193. M - Heavy Iris Tumbler - Radium
- _____ 194. **G - Raspberry N Milk Pitcher - Beautiful Example**
- _____ 195. **P - Broken Arches Imp. Punch Bowl & Base - Super - It Talks To You**
- _____ 196. P - N Grape and Cable Punch Bowl & Base - 8 Cups - Very Nice Set
- _____ 197. M - Fentonia Creamer
- _____ 198. M - Springtime Creamer
- _____ 199. G - Grape and Cable Creamer
- _____ 200. **Florentine I.G. - 7¼" Mirrored Lotus Ruffle Bowl - Ultra Rare and Beautiful Pastel Color**
- _____ 201. Light Aqua Base - Round Peacock and Urn Fenton Compote - Scarce
- _____ 202. A - Grape and Cable Sweet Meat Compote - Nick on Base - Very Pretty
- _____ 203. **M - Grape and Cable Cologne w/Stopper A or B - Great Ones**
- _____ 204. **A - Grape and Cable Cologne w/Stopper A or B - Great Ones**
- _____ 205. G - Grape and Cable Stippled Cup and Plain Saucer
- _____ 206. A - Grape and Cable - Cup and Saucer
- _____ 207. **B - 9½" Fenton Peacock and Urn Plate - Multi Irid**
- _____ 208. **W - 9½" Fenton Peacock and Urn Plate - Blues, Pinks & Golds**

- _____ 209. **M - 9½" Fenton Peacock and Urn Plate - Multi Pinks & Golds**
- _____ 210. **P - 9½" Imp. Scroll Embossed Plate - Super Multi - Elec.**
- _____ 211. G - 9¼" Imp. Scroill Embossed Plate - Radium Multi
- _____ 212. M - 9½" Imp. Scroll Embossed Plate - Radium Multi
- _____ 213. G - 9¼" Fenton Spat. FTD. Grape and Cable Flat Plate - Satin Multi
- _____ 214. B - 9" Dugan Apple Blossom Twig Plate - Scarce Color
- _____ 215. **P - Large Tornado Vase - Scarce and Nice**
- _____ 216. **P - Corn Vase - Plain Base - Better than Average Irid.**
- _____ 217. M - Fine Cut and Rings Pedestal Celery Type Vase - Very Scarce
- _____ 218. G - 11½" Mlbg. Hob Nail Flame Tip Vase - Hot Item
- _____ 219. Deep Rich Dark Teal - Corinth J.I.P. Vase - 8" - Beautiful
- _____ 220. Aqu. - 6" Ruffled Persian Medallion Sauce - Rare Color
- _____ 221. **B - 4 Sides Up, 2 Kittens Bowl - Rare - A or B**
- _____ 222. **B - 4 Sides Up, 4 Sets Kittens Bowl - Rare**
- _____ 223. **B - Kittens Banana Dish or Card Tray - Rare - 4 Kittens**
- _____ 224. M - Kittens Banana Dish or Card Tray - 4 Kittens - A or B - Great
- _____ 225. M - Kittens - 4 Sides - 4 Kittens Bowls - Nice - A or B
- _____ 226. B - N Peach Tumbler - Radium Multi Irid
- _____ 227. **W - N Peach Tumbler - Frosty - Gold Decoration - Scarce**
- _____ 228. G - N Springtime Tumbler - Pigment in Glass - Pretty & Scarce
- _____ 229. **B - Beaded Shell Tumbler - Very Nice - Scarce Color**
- _____ 230. P - Beaded Shell Tumbler - Dark and Pretty
- _____ 231. M - Beaded Shell Tumbler - Also Scarce to Find
- _____ 232. **P - Imp. Lustre Rose Tumbler - Rib Interior - Radium Beauty**
- _____ 233. B - Bouquet Tumbler - Very Pretty - Not Easily Found
- _____ 234. B - Panelled Dandelion Tumbler - Chip on Top Edge
- _____ 235. **Pastel - A.O. - Beaded Cable Rose Bowl - No Butterscotch - Great Example**
- _____ 236. G - Beaded Cable Rose Bowl - Plain Interior - Silvery Irid.
- _____ 237. W - Constellation Compote - Great Blues & Pinks
- _____ 238. **W - Orange Tree Cream & Sugar Set - Rare Color**
- _____ 239. 7 - Copies Womens Day Magazines on Carnival Glass - Choice
- _____ 240. **Red - 9" Vintage Ruffled Bowl - Chip, Absolutely Fabulous Red**
- _____ 241. Red - 8¾" Persian Medallion Ruffled Bowl - Super Red - Chipped
- _____ 242. Red - 9" Holly Fenton Ruffled Bowl - Beauty - Base Bruise
- _____ 243. **W - Heavy Iris Dugan J.I.P. Whimsey Hat from Tumbler - Super & Rare**
- _____ 244. **P.M. - Heavy Iris Dugan J.I.P. Whimsey Hat From Tumbler - Super & Rare**
- _____ 245. M - 2 Sides Up Circle Scroll - 2 Sides Up Whimsey From Tumbler
- _____ 246. **B - 7¼" 12 Sided Pine Cone Plate - Beautiful Multi Irid - Very Scarce Size**
- _____ 247. **A - 7¼" 12 Sided Pine Cone Plate - Beautiful Multi Irid - Very Scarce Size**
- _____ 248. B - 6½" 12 Sided Pine Cone Plate - A or B - Both Very Nice
- _____ 249. G - 6¼" Round Flat, Pretty Pine Cone Plate
- _____ 250. M - 6¼" 12 Sided Pine Cone Plate - Lot of Pinks
- _____ 251. A - 7¾" N Wild Strawberry Hand Grip Plate
- _____ 252. G - 7¾" N Wild Strawberry Hand Grip - Nice - Silvery Satin
- _____ 253. P.M. - 9" N Strawberry - B.W. Ext. Plate - Even Soft Blues, Greens and Lav.
- _____ 254. M - 9" N Strawberry - B.W. Ext. Plate - Nice Even Multi Irid.
- _____ 255. **M - 10" Acanthus Chop Plate - Imp. Top of the Line**
- _____ 256. **Clam - Yellowish - 9½" Leaf Chain Plate - Beautiful Plate**
- _____ 257. B - 9¼" Windflower Plate - Multi Satin - Very Scarce Color
- _____ 258. M - N 9" Grape and Cable Variant B.W. Plate - Very Pretty
- _____ 259. **W - 10½" 6 Ruffle Petal and Fan Bowl - Frosty Multi Irid. - Few Known**
- _____ 260. M - N Butterfly Bon Bon - Thread Ext. - Soft Blue Irid.
- _____ 261. B - N 5½" Peacock and Urn I.C.S. Sauce - Near Elec. Blue - Super One
- _____ 262. A - Imp. Pansy Creamer - Multi Radium - Scarce
- _____ 263. P - Acorn and Burr Creamer - Always in Demand
- _____ 264. P - Circle Scroll Creamer - Great Find
- _____ 265. M - Circle Scroll Creamer - Great Find
- _____ 266. **Em. G. - Grape and Cable Butter Dish - Super Color**
- _____ 267. **A - Dugan Dahlia Butter Dish - Scarce - Great Match Top & Bottom**
- _____ 268. **A - Mlbg. Country Kitchen Butter Dish - Very Rare - Factory Ground Base**
- _____ 269. M - Miniature Corn Bottle - Radium Beauty
- _____ 270. I.B. - N Tri-Corner Drapery Candy Dish
- _____ 271. A - 9¼" Mlbg. Rays and Ribbons Ruffled Bowl - Satin
- _____ 272. G - 10¼" Mlbg. 6 Ruffle Peacock and Urn Bowl - Satin
- _____ 273. **G - 10" Mlbg. I.C.S. Peacock and Urn Bowl - Super Satin - Beautiful Example**
- _____ 274. **A - 10¼" Mlbg. 3 in 1 Peacock and Urn Bowl - Rare Size - Super Radium**
- _____ 275. M - 9½" Mlbg. 6 Ruffle Primrose Bowl - Super Radium
- _____ 276. A - 9½" Mlbg. 6 Ruffle Whirling Leaves - Radium Blues, Purple & Golds
- _____ 277. **M - 8¾" Mlbg. 6 Ruffle Bowl - C.R.E. Grape Wreath Variant - Star Center - Radium - Rare**
- _____ 278. **P.M. - 8¾" Mlbg. 6 Ruffle Bowl - C.R.E. Holly Whirl Variant - Star Center - Radium - Rare**
- _____ 279. **A - 7½" Mlbg. 6 Ruffle Court House Bowl - Radium - Hot Item**
- _____ 280. **Aqua - N Round Bushel Basket - True Aqua - No Opal - Rare Color**
- _____ 281. A.O. - N Round Bushel Basket - In Big Demand
- _____ 282. B - N Round Bushel Basket - Multi Elec.
- _____ 283. I.G. - N Round Bushel Basket - Pinks and Greens
- _____ 284. P - N Round Bushel Basket - Multi Irid.
- _____ 285. M - N Round Bushel Basket - Rich Pinks and Golds



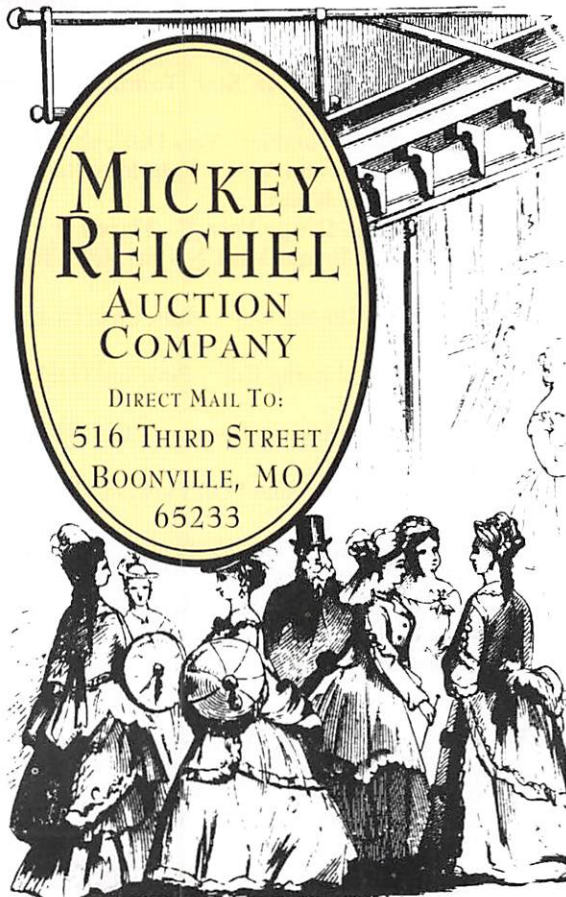
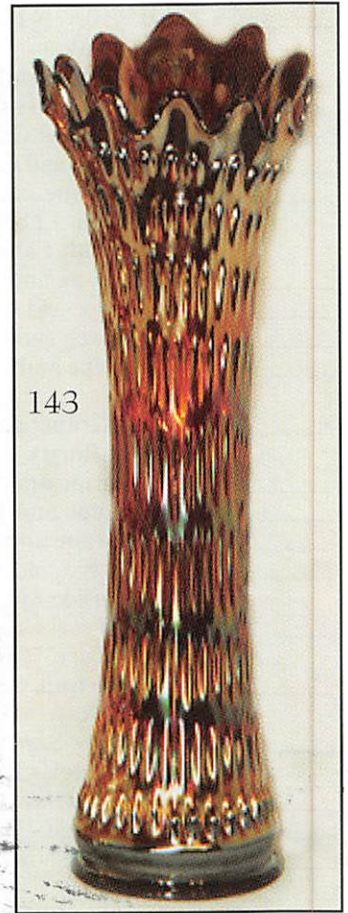
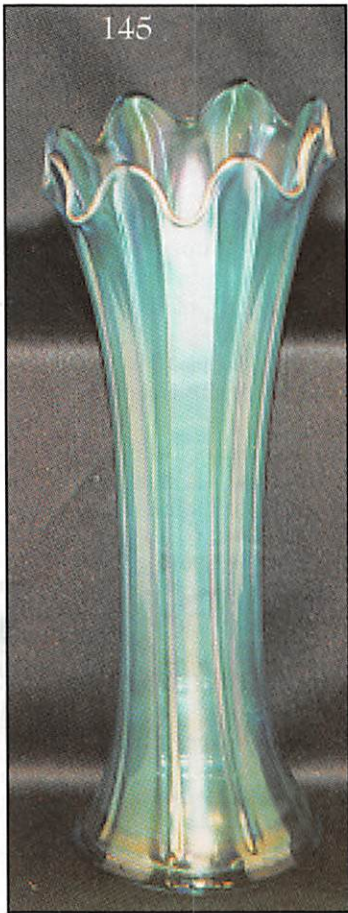
- _____ 286. B.O. - N Round Bushel Basket - No IRid. - Lots of Opal - Scarce Item
- _____ 287. **I.B. - Mid Size - 7¼" Square Open Edge Basket - Dark Beauty - Very Scarce**
- _____ 288. **I.G. - Mid Size - 7¼" Square Open Edge Basket - Glows - Black Lite - Very Scarce**
- _____ 289. W - 6½" 6 Ruffle - Mid Size Open Edge Basket - Great Multi Irid. - Also Scarce Size
- _____ 290. B - 7½" 2 Sides Up - Open Edge Blackberry Basket - Scarce Size
- _____ 291. M - Leaf and Beads - Floral Int. N Rose Bowl - Pretty Satin
- _____ 292. P - 8¾" 8 Ruffle Spat. FTD. Stippled 3 Fruits Medallion Bowl - Super Multi
- _____ 293. M - 8½" Stippled 3 Fruits - Collar Base Bowl - Pinks, Blues & Golds
- _____ 294. A.O. - Ruffled - Stippled 3 Fruits Medallion Bowl - Super - Heat Check in Foot
- _____ 295. M - P.C.E. - B.W. Three Fruits Bowl - Rich Satin - Under Valued
- _____ 296. P - 8 Ruffle Collar Base - B.W., 3 Fruits Bowl - Multi Elec. Super - Chip Back of 1 Tip
- _____ 297. **Saph. - Ruffle Stippled 3 Fruits Collar Base Bowl - Outstanding - Bruise on Tip**
- _____ 298. **W - 8¾" Fanciful Plate - Not Ruffled - Blues, Pinks & Golds - Scarce**
- _____ 299. M - 8¾" Fanciful Plate - Not Ruffled - Pinks and Golds - Also Scarce
- _____ 300. **I.G. - 9" N Embroidered Mums Rib B.K. Plate - Blues, Pinks & Golds - Rare**
- _____ 301. **I.G. - Ruffled Rib Bk. Hearts and Flowers Bowl - Rare and Nice**
- _____ 302. **Rich I.B. - Ruffled Rib Bk. Hearts and Flowers Bowl - Great One**
- _____ 303. W - Ruffled Plain Back Hearts and Flowers Bowl - Beauty for White
- _____ 304. A.O. - Pastel Hearts and Flowers Compte - 2" of Opal
- _____ 305. M - 9" N Rib Bk. Peacocks Plate - Rich Golds and Pink Hi-lites
- _____ 306. M - 7¾" Flat Horse Medallion Plate - Rich Satin - Pinks & Blues
- _____ 307. **P - 6" C.R.E. Petal and Fan Plate - Jewel Heart Ext. - Little Beauty**
- _____ 308. **P.O. - 6¾" Question Mark Stemmed Plate - C.R.E. - Plain Ext. - Scarce**
- _____ 309. **M - 7" Question Mark Stemmed Plate - Georgia Peach Ext. - Scarce**
- _____ 310. I.B. - Fine Cut and Roses Rose Bowl - Fancy Int. - Dark - Nicks on Feet
- _____ 311. **Pastel A.O. - Drapery Rose Bowl - A Beautiful Item**
- _____ 312. **B - Kittens Cereal Bowl - Rare Color and Shape**
- _____ 313. **B - 6 Ruffle Kittens Bowl - Rare - A or B**
- _____ 314. M - Kittens Cereal Bowl - A or B Scarce Shape
- _____ 315. M - 6 Ruffle Kittens Bowl - A or B
- _____ 316. A - Mlbg. Hob Nail Swirl Rose Bowl - Scarce Item
- _____ 317. **A - Mlbg. Leaf and Little Flowers Miniature Compote - Radium Beauty**
- _____ 318. **B - Ruffle - Rib Back Good Luck Bowl - Elec. w/Pink Shades - Great**
- _____ 319. P - P.C.E. - Rib Back Good Luck Bowl - Multi Elec.
- _____ 320. P - Ruffle - Rib Back Good Luck Bowl - Multi Elec. - Great One
- _____ 321. G - 9" Flat - B.W. Good Luck Plate - Rare - Tip
- _____ 322. Chip
Dark-A - Wishbone and Spades - Flat 6½" Smooth Bk. Plate - Very Nice
- _____ 323. P.O. - 6½" Four Flowers Plate - Lots of Opal - A or B
- _____ 324. **Dark-A - 9½" Flat Dugan Vintage Dome FTD. Plate - Beauty - Very Rare - Few Known**
- _____ 325. **M - Two Flowers, 12¼" FTD. Flat Chop Plate - Super Multi Even Irid. - The Best**
- _____ 326. P - Acorn and Burrs Pitcher - Great One
- _____ 327. P - Acorn and Burrs Tumbler - Outstanding Multi Elec.
- _____ 328. **W - N Peacock at the Fountain Pitcher - Very Rare - Frosty - w/Blues**
- _____ 329. **B - Butterfly and Fern Pitcher - Fabulous - Elec. Radium**
- _____ 330. B - Butterfly and Fern Tumbler - Super Also
- _____ 331. **M - Rare - Mlbg. Feather and Heart Pitcher - Super Pinks, Blues**
- _____ 332. M - Mlbg. Feather and Heart Tumbler - Rare - Bruise on Top Edge
- _____ 333. M - Orange Tree Punch Bowl, Base and 6 Cups - Above Average Set
- _____ 334. A - 7¾" N Fruits and Flowers Hand Grip Plate - Very Nice
- _____ 335. G - 7¾" N Fruits and Flowers Hand Grip Plate - Flaw on Fruit
- _____ 336. Lav. - A - 7½" Fruits and Flowers B.W. Plate
- _____ 337. M - 7½" N Fruits and Flowers Plate - Multi Irid. - Nice
- _____ 338. P.O. - 6¼" Persian Garden Plate - B.W. Ext.
- _____ 339. **W - 7" Persian Garden Plate - Pool of Pears Ext. - Pinks and Blues - Scarce Ext. Pattern**
- _____ 340. **M - Zipper Loop Lamp - Smallest Size - 6½" H x 4" Base Diameter**
- _____ 341. **M - Zipper Loop Lamp - 7" High x 4¼" Base Diameter**
- _____ 342. W - 9" Rose Show Plate - Multi Pinks and Blues
- _____ 343. W - 9½" Poppy Show Plate - Frosty Pinks, Blues and Golds
- _____ 344. A - 11¼" Imp. Heavy Grape Chop Plate - Beautiful Multi Even Irid.
- _____ 345. Moonstone - Collar Base Ruffled Peacock and Grape Bowl - Very Rare - Worn Irid.
- _____ 346. **B - Atlantic City Elks Bell, 1911, w/Clapper - Rare**
- _____ 347. **P - Mlbg. Elks Paper Weight - Epoxy Around Edge - Very Rare Beauty**
- _____ 348. **B - 6¾" Round 1911 Alantic City Elks Bowl - Rare Beauty**
- _____ 349. **A - 6½" Round 1910 Detroit City Elks Bowl - Great Irid.**
- _____ 350. **G - 6½" Round 1910 Detroit City Elks Bowl - Also Great Rarity**
- _____ 351. P.M. - 7¾" 6 Ruffle Little Stars Bowl - Satin Silver Irid.
- _____ 352. M - 10 Ruffle Mlbg. Brooklyn Bridge Bowl - Super Radium
- _____ 353. Lav. A - 9¼" Deep Round Mlbg. Peacocks Bowl - Radium Beauty
- _____ 354. **Aqua - Saph - 10¼" N Fine Rib Vase - A Beauty - Green Irid on Top**
- _____ 355. **A.O. - 10¼" Small Size Tree Trunk Vase - Minor Peeling On Flutes - Super**
- _____ 356. **A.O. - 11¼" N Four Pillars Vase - Super Butterscotch Overlay**

- _____ 357. I.B. - 10¹/₄" N Diamond Points Vase - Scarce - Dark and Pretty
- _____ 358. **W - Grape and Cable Cracker Jar - Very Rare Color - Pretty One**
- _____ 359. M - Stippled Grape and Cable Cracker Jar
- _____ 360. P - Grape and Cable Cracker Jar - Great Example
- _____ 361. **P - Grape and Cable Dresser Tray - Free Premium Label on Back - St. Louis, MO - Very Rare with Label - Very Pretty One**
- _____ 362. **G - Grape and Cable Pin Tray - Very Scarce**
- _____ 363. P - Grape and Cable Pin Tray - Very Desirable
- _____ 364. M - Grape and Cable Pin Tray - Very Scarce
- _____ 365. **P - Grape and Cable Perfume w/Stopper - Great Rarity**
- _____ 366. **M - Grape and Cable Perfume w/Stopper - Great Rarity**
- _____ 367. **G - Grape and Cable Candle Lamp - Complete**
- _____ 368. **P - Grape and Cable Candle Lamp - Complete**
- _____ 369. **M - Grape and Cable Candle Lamp - Complete**
- _____ 370. P - Grape and Cable Covered Compote - Minor Chip Inside Lid - Very Pretty
- _____ 371. M - N Peacock at the Fountain Punch Bowl & Base and 6 Cups - Great Set
- _____ 372. **P - Pair Imp. 6 Sided Candlesticks - Super Color - Very Rare - Highly Treasured Item**
- _____ 373. **G - Buzz Saw Cruet and Stopper - Large Size, Cambridge - Rare - Complete**
- _____ 374. **G - Buzz Saw Cruet and Stopper - Small Size, Cambridge - Rare - Complete**
- _____ 375. P - Rose Show Plate - Very Scarce Color - Multi Irid.
- _____ 376. **W - Fanciful 8³/₄" Flat Plate - Great One and Flat**
- _____ 377. Dark A - Peacocks N Rib Bk. Plate - Multi Purple, Blue & Gold Irid
- _____ 378. Lime I.G. - Peacocks N Rib Bk. Plate - Blue Hi-lites
- _____ 379. W - Peacocks N Plain Bk. Plate - Very Nice and Scarce
- _____ 380. M - Peacocks N Rib Bk. Plate - Dark Pinks, Greens & Golds - Great One
- _____ 381. **Yellow Amber Opal - 8" I.C.S. Dragon & Lotus Collar Base Bowl - Glows Under Black Lite**
- _____ 382. G - 9¹/₄" Mlbg. Fleur De Lis Round Dome FTD. Bowl - Flake Off Foot - Great Greenish Radium
- _____ 383. M - 10" Mlbg. Fleur De Lis Bowl - Radium - Very Nice
- _____ 383. **P - Diamond and Sunburst Decanter & Stopper - Super Elec. & Rare**
- _____ 385. P - Mlbg. 9¹/₂" 6 Ruffle Nesting Swan Bowl - Great Radium Example
- _____ 386. **A - Mlbg. 6¹/₂" Strawberry Wreath Ruffled Compote - Radium - Great**
- _____ 387. **Smoke - 9¹/₄" Imp. Shell - No Sand Plate - Super Greens & Purple Irid. - Rare**
- _____ 388. **Emerald G - 9¹/₂" Four Flowers Vt. Plate - Great**
- _____ 389. **P - 9" Round Up Plate - Multi Elec. - Beauty**
- _____ 390. B - 9" Round Up Plate - Flat - Scarce Color for Dugan
- _____ 391. W - 8¹/₂" Round Up Plate - Multi Blues & Pinks
- _____ 392. **P.M. - 9¹/₂" Collar Base Peacock and Grape Plate - Gorgeous Pinks, Golds & Blues**
- _____ 393. M - 8³/₄" C.R.E. Deep Ten Mums Bowl - Beautiful Blues & Gold Irid.
- _____ 394. **P - 8 Ruffle Rib Bk. Peacocks Bowl - Super Item**
- _____ 395. **P.M. - 8 Ruffle Peacocks Bowl - Few Known with B.W. Ext. Pinks, Golds & Greens**
- _____ 396. G - FTD. Ruffled 8¹/₂" Wishbone Bowl N - Greens & Pinks
- _____ 397. P - FTD. Ruffled 8¹/₂" Wishbone Bowl N - Multi Irid - Very Nice
- _____ 398. **Clam. - FTD. Ruffled 8¹/₂" Wishbone Bowl N - Pinks and Blues - A Beauty**
- _____ 399. **M - Dandelion Mug - Knights Templar - Scarce**
- _____ 400. **A.O. - Dandelion Mug - Super Opal - Lite Butterscotch on Sides**
- _____ 401. M - Dandelion Mug - Pinks, Golds & Green Hi-Lites
- _____ 402. P - Dandelion Mug - Multi Irid.
- _____ 403. **M - Fishermans Mug - Darker Example - Pink & Gold Hi-Lites - Rare Color**
- _____ 404. **B.A. - Heron Mug - Very Scarce and Desirable**
- _____ 405. B - 7¹/₄" Fenton Vintage Plate - Radium and Nice
- _____ 406. A - 7¹/₂" Fenton Vintage Plate - Radium and Nice
- _____ 407. G - 7³/₄" Fenton Vintage Plate - Satin
- _____ 408. **Lav. P - 7³/₄" Grapevine Lattice Plate - Brilliant Blues & Purples - Rare Color**
- _____ 409. P.O. - 7" Persian Garden Plate - B.W. Ext. - Lots of Opal - Very Pretty
- _____ 410. P - 6¹/₂" Wishbone and Spades Plain Bk. Plate - Great One
- _____ 411. **W - N Wisteria Tumbler - Very Rare - Frosty w/Pinks**
- _____ 412. **W - Cosmos and Cane Tumbler - Very Rare Color - Soft Blues and Pinks**
- _____ 413. M - Cosmos and Cane Tumbler - Radium - Very Pretty
- _____ 414. **G - Peacock at the Fountain Tumber N - Super Color - Very Rare**
- _____ 415. B - Blackberry Block Tumbler - Blue & Pink Irid. - Small Base Chip
- _____ 416. M - Blackberry Block Tumbler
- _____ 417. **A - Cambridge Double Star Tumbler - Very Rare Color - Radium**
- _____ 418. M - Jeweled Heart Tumbler - Very Difficult to Find
- _____ 419. **P - 10¹/₄" Pulled Loop Vase - Fabulous Radium Multi Irid. - Few Known**
- _____ 420. **A.O. - Daisy and Drape Vase N - Flared Out**
- _____ 421. **W - Daisy and Drape Vase N - Straight Top - Great Example**
- _____ 422. B - Orange Tree Loving Cup - Multi Elec. Hi-Lites - Very Pretty
- _____ 423. M - Orange Tree Loving Cup - Pink and Gold Hi-Lites
- _____ 424. G - 10" Mlbg. Hanging Cherries I.C.S. Bowl - Damage on Cherries
- _____ 425. Purple Violet - 8³/₄" Round Four Flowers VT. Bowl - Rim Chips
- _____ 426. M - Grape and Cable Cup & Saucer - Beautiful Stippled Cup - Sa. Chipped
- _____ 427. Powder Blue Base - 2 Sides Up - Open Edge Basket - Check Between Edges
- _____ 428. B - Plume Panels Vase - 10³/₄" - Chip on Top Edge

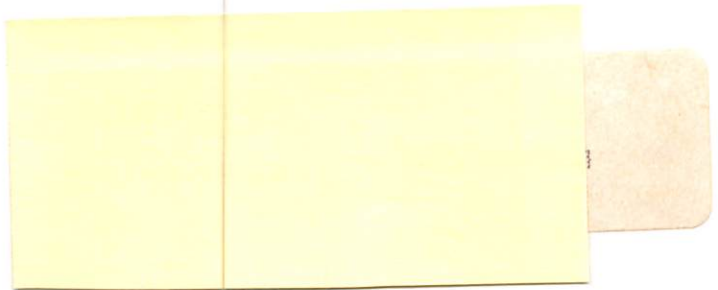
THANK YOU

WE APPRECIATE YOUR BUSINESS! BOTH BUYER AND SELLER - GIVE ME A CALL WHEN YOU'RE READY FOR A SALE! -

Mickey Reichel



First Class Mail



"EXCITEMENT BUILDS AS THE CROWD GATHERS AT THE MICKEY REICHEL AUCTION COMPANY!"