



Outstanding Carnival Glass

AUCTION

Saturday, June 21 1997 - 9:30 a.m.



*Holiday Inn - Wentzville • 900 Corporate Parkway • Wentzville, MO
(Exit 212a off of I-70) • Call (314) 327-7001 for reservations*

JIM and JAN SEECK

Seeck Auctions

515-424-1116

CARNIVAL GLASS AUCTION

SATURDAY, JUNE 21, 1997 -- 9:30 A.M.

Holiday Inn -- Wentzville, MO

It's auction time! Seek Auctions is pleased to bring you an outstanding private collection to be sold to the highest bidder. This sale has lots of great lettered pieces and many rarities. Come spend the weekend and buy some fantastic Carnival Glass.

PREVIEW: Friday, June 20th, 3:00 P.M.

RESERVATIONS: Call (314) 327-7001 (Please ask for the Seek Auction block of rooms)

WRITE-IN BID POLICY

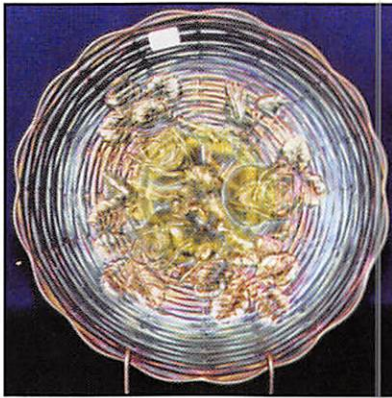
1. Write-in bids will be accepted by sending the numbers of the item(s) desired and the amount bid on each to:
Seek Auctions, PO Box 377, Mason City, Iowa 50402.
2. If known by Auction Company, bids may be done over the telephone. (515)424-1116.
3. There is a \$5 handling charge for each successful bid. Shipping and insurance charges are additional.
4. Bidders will be notified by a phone call if their bid(s) are successful. This call will be made 1 - 3 days after the auction is over.
5. Please have all bids in by Wednesday, June 18th. All bids (by mail or phone) after this date may not be carried out.
6. Please place bids in the following increments: \$1 to \$300 - \$5 increments \$300 up - \$25 increments.
7. If you do not receive an item that sold for less than your bid, assume we cancelled your bid because the piece of glass had below average color, manufacture problem, damage or was not listed correctly.
8. To receive price lists send: \$20 -- for this auction and next 7 auctions
\$5 -- for only this auction or individual auction (please specify)

Send to the above address. (please allow 2 - 3 weeks delivery for price lists)

You may now email us with your write-in bids! Our email address is: seekauction@willowtree.com
Continue to include the numbers of the item(s) you would like to bid on and amount bid on each, also include your telephone number AND email address.

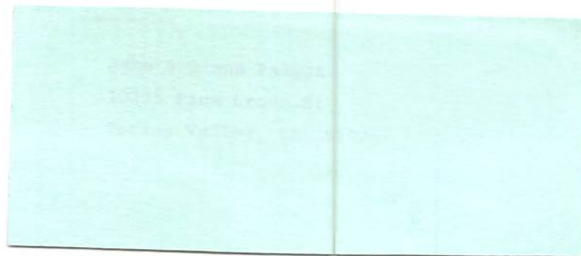
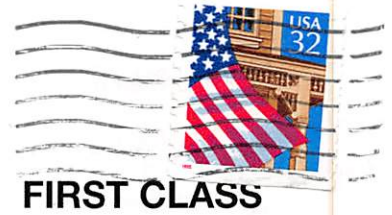
- | | |
|-------------------------------------------------------------------------------------------------------------------------------|-------------------------------------------------------------------------------------------------------------------------------|
| ___ 1. Enameled Tumble Up - marigold | ___ 23. Cosmos & Cane tumbler - honey amber - scarce |
| ___ 2. Sailboats wine - marigold | ___ 24. Nearcut Souvenir tumbler - marigold - Montreal Que., minor chip on rim |
| ___ 3. Floral & Grape whimsy JIP hat shape - marigold | ___ 25. Peacock at the Fountain 8 pc. punch set - white - a super rarity, frosty w/super irid., a top piece in this auction |
| ___ 4. Acorn Burrs butterdish bottom - purple - minor nick on inside rim where lid sets | ___ 26. Peacock at the Fountain 8 pc. punch set - marigold - very scarce, especially with 6 cups |
| ___ 5. Flute toothpick - purple - pretty | ___ 27. Frosted Block 9" plate - clambroth |
| ___ 6. Flute toothpick - green | ___ 28. M'burg Courthouse IC shaped bowl - amethyst - radium & nice, super mold detail |
| ___ 7. Flute toothpick - marigold | ___ 29. Thin Rib & Drape 4 1/2" vase - marigold |
| ___ 8. Interior Panels squatty 9" vase - marigold - has a 4 1/2" base | ___ 29a. Rose Show ruffled bowl - green - super nice example, a rare color for this piece, outstanding! |
| ___ 9. Lined Lattice 10" vase - marigold | ___ 30. Rose Show ruffled bowl - aqua opal - lots of opal & nice, very scarce |
| ___ 10. Jockey Club handgrip plate - amethyst - absolutely super, very rare & desirable, color & irid. is as good as they get | ___ 31. Rose Show ruffled bowl - purple - lavender - super pretty, base warped |
| ___ 11. Grape & Cable butter dish top - green | ___ 32. Fashion creamer & sugar - marigold |
| ___ 12. N's Peacock at Urn master IC bowl - white - flat & super, frosty w/nice irid., scarce | ___ 33. Scroll Embossed 9" plate - marigold - pretty |
| ___ 13. N's Peacock at Urn master IC bowl - purple - great example, nice multi-color irid., scarce | ___ 34. Scroll Embossed 9" plate - green |
| ___ 14. N's Peacock at Urn IC sauces (2) - purple - nice, choice | ___ 35. Grape & Gothic Arches water pitcher - blue - very scarce |
| ___ 15. Caroline tri-cornered CRE bowl - peach opal - nice | ___ 36. Grape & Gothic Arches tumbler - blue - pretty |
| ___ 16. Orange Tree 9" plate - blue - scarce | ___ 37. Grape & Gothic Arches butter dish - blue - super pretty, scarce |
| ___ 17. Orange Tree 9" plate - white - very pretty irid. | ___ 38. Grape & Gothic Arches butter dish bottom - blue |
| ___ 18. Orange Tree 9" plate - marigold - nice | ___ 39. Dragon & Strawberry IC shaped bowl - amethyst - super, extremely rare color w/ outstanding irid., a top Fenton rarity |
| ___ 19. Woodlands 5" vase - marigold - souvenir of Romeo, MI | |
| ___ 20. M'burg Little Stars 9" IC shaped bowl - green - radium & super, very rare size | |
| ___ 21. M'burg Little Stars 9" IC shaped bowl - marigold - satin & super | |
| ___ 22. Circle Scroll tumbler - marigold - scarce | |

- ___ 40. **Dragon & Strawberry IC shaped bowl - marigold - very scarce item, has pretty irid.**
- ___ 41. Stag & Holly large deep ruffled bowl - blue
- ___ 42. N's Bushel basket - blue
- ___ 43. **1911 Antlantic City Elks IC shaped bowl - blue - super pretty , a very rare commemorative**
- ___ 44. Wild Rose ftd bowl - marigold - points straight up
- ___ 45. **Apple Blossom Twigs 9" plate - peach opal - very rare plate, w/smooth edge**
- ___ 46. Fisherman's mug - marigold - fantastic
- ___ 47. **Ten Mums tankard water pitcher - marigold - very rare pitcher, seldom sold**
- ___ 48. Leaf Chain 7" plate - marigold
- ___ 49. Ripple 8" vase - amber
- ___ 50. **Rose Show 9" plate - vaseline - extremely rare & desirable, has super pretty irid., a top piece in this and any sale**
- ___ 51. **Rose Show 9" plate - green - rare & desirable, one of the tougher colors to locate**
- ___ 52. **Rose Show 9" plate - blue - a very pretty example for this rare plate**
- ___ 53. **Rose Show 9" plate - marigold - very pretty, scarce**
- ___ 54. Cosmos & Cane creamer - honey amber
- ___ 55. Cherry Chain large IC shaped bowl - white - very scarce
- ___ 56. **Central Shoe Store adv. round bowl - amethyst - very scarce bowl, adv. is hot**
- ___ 57. **Vinyard water pitcher - purple - very rare water pitcher, nice**
- ___ 58. Lotus & Thistle IC shaped bowl - marigold
- ___ 59. Open Rose 9" plate - marigold
- ___ 60. **Hearts & Flowers 9" plate - ice blue - super pretty irid., extremely rare**
- ___ 61. Tree Trunk 11" vase - purple
- ___ 62. **Hearts & Flowers ruffled compote - marigold - scarce**
- ___ 63. **Hearts & Flowers ruffled compote - white - nice**
- ___ 64. Fenton's Three Fruits ruffled bowl - amethyst - much harder to find than the plate
- ___ 65. **Persian Medallion 6" plate - black amethyst - pretty, rare**
- ___ 66. Persian Medallion 6" plate - marigold
- ___ 67. **Dragon & Lotus IC shaped bowl - marigold on moonstone - rare color for this bowl**
- ___ 68. Luster & Clear 7" plate - marigold - scarce
- ___ 69. **Plaid ruffled bowl - red - chips on outer edge, very rare & desirable**
- ___ 70. Imperial Grape wine decanter - purple
- ___ 71. Imperial Grape wines (3) - purple - choice
- ___ 72. **Stippled Three Fruits 9" plate - aqua opal - solid opal around outside edge, very pretty & rare plate**
- ___ 73. **Stippled Three Fruits 9" plate - sapphire - extremely rare & desirable**
- ___ 74. **Stippled Three Fruits 9" plate - purple - scarce**
- ___ 75. **Stippled Three Fruits 9" plate - marigold - scarce**
- ___ 76. Fenton's Flowers ftd nut bowl - marigold - pretty
- ___ 77. **Captive Rose 9" plate - amethyst - very scarce & desirable**
- ___ 78. **Captive Rose 9" plate - blue - scarce**
- ___ 79. Holly & Berry ruffled bowl - purple
- ___ 80. **Wisteria tumbler - ice blue - very scarce**
- ___ 81. Zippered Loop medium sized finger lamp - marigold - 2 large chips on bottom of base, does not detract from look
- ___ 82. Vintage 7" plate - green - scarce & nice
- ___ 83. Vintage 7" plate - blue
- ___ 84. **Wild Strawberry 10" ruffled bowl - white - very rare color, I don't know of many, nice**
- ___ 85. M'burg Cherries creamer - green - satin
- ___ 86. M'burg Cherries sugar bowl - green - satin
- ___ 87. **Panelled Dandelion tankard water pitcher - amethyst - very pretty**
- ___ 88. Lions IC shaped bowl - blue - chip off base
- ___ 89. M'burg Diamonds tumbler - marigold
- ___ 90. **Poppy Show 9" plate - ice blue - very rare & desirable w/nice irid.**
- ___ 91. **Poppy Show 9" plate - marigold - dark & super, as pretty as they get**
- ___ 92. Beaded Shell mug - amethyst
- ___ 93. Strawberry 9" plate w/plain back - green - nice
- ___ 94. Strawberry 9" plate w/BW back - amethyst - also nice
- ___ 95. Strawberry 9" plate w/BW back - marigold - and also nice
- ___ 96. **Brooklyn Bridge 10 ruffled bowl - marigold - pretty**
- ___ 97. **Wishbone ftd ruffled bowl - white - very scarce color & pretty**
- ___ 98. Wishbone ftd ruffled bowl - purple
- ___ 99. Ten Mums tumbler - blue - nice
- ___ 100. **M'burg 1910 Detroit Elks IC shaped bowl - amethyst - radium & super, extremely rare, a goodie**
- ___ 101. Corinth 8" vase - teal
- ___ 102. Good Luck PCE bowl w/ribbed back - marigold - has very pretty soft pastel irid.
- ___ 103. Raindrops 3 in 1 edge dome ftd bowl - peach opal
- ___ 104. Horse Medallion 7" plate - marigold - super pretty & dark
- ___ 105. **Grape & Cable hatpin holder - ice blue - extremely rare & desirable, pretty irid. on this great piece!**
- ___ 106. **Grape & Cable hatpin holder - purple - super nice!**
- ___ 107. **Grape & Cable dresser tray - ice blue - very rare & desirable, lots of irid.**
- ___ 108. **Grape & Cable pin dish - ice blue - made from punch cup, very few known**
- ___ 109. Grape & Cable powder jar bottom - ice blue - who has the lid!
- ___ 110. Heavy Grape 8" plate - purple
- ___ 111. Heavy Grape 8" plate - green
- ___ 112. Heavy Grape 8" plate - marigold - pretty
- ___ 113. **Peacocks ruffled bowl - blue - extremely pretty**
- ___ 114. Kittens cup & saucer - marigold
- ___ 115. Kittens cereal bowl - marigold - nice
- ___ 116. Kittens ruffled bowl - marigold - nice
- ___ 117. Kittens 4 sideds up bowl - marigold
- ___ 118. Kittens toothpick - marigold
- ___ 119. Persian Garden large IC shaped bowl - white - pretty & scarce



Seek Auctions

P.O. Box 377
Mason City, Iowa 50402



- ___ 120. Holly ruffled bowl - cobalt blue opal - super!
as pretty as they get, rare
- ___ 121. Holly ruffled bowl - blue
- ___ 122. Panther ftd centerpiece bowl - marigold -
rare w/pretty pink & blue irid.
- ___ 123. Grapevine Lattice 7" plate - white - nice
- ___ 124. M'burg Peacock at Urn master IC shaped
bowl - marigold - satin & super!
- ___ 125. Odgen Furniture advertising ruffled bowl -
amethyst - nice & very hard to get
- ___ 126. Waffleblock 8 pc. punch set - marigold - harder
to find than you think
- ___ 127. Panther ruffled ftd sauce - red - a very nice
example, scarce & desirable
- ___ 128. Nippon PCE bowl - ice blue - nice
- ___ 129. Wild Rose ftd bowl - lavender - pretty
- ___ 130. N's Corn vase - marigold - dark & nice,
very desirable
- ___ 131. Ten Mums tumblers (4) - marigold - choice
- ___ 132. Colonial Lady vase - purple - very scarce &
desirable
- ___ 133. Four Flowers chop plate - purple - extremely rare
plate but missing irid. around the edge
- ___ 134. Grape Arbor tumblers (2) - white - choice
- ___ 135. Wreathed Cherry tumbler - white - has red
cherries, epoxy on base
- ___ 136. Interior Panels guest set - celeste blue - has
cobalt handle, scarce
- ___ 137. Pinecone 6" saucer shaped plate - green - scarce
- ___ 138. Peacock at the Fountain large ftd fruit bowl -
marigold - scarce
- ___ 139. Fanciful 9" plate - peach opal
- ___ 140. Sailboats round sauce - marigold - has small
brides basket holder
- ___ 141. Daisy & Drape flared out vase - aqua opal -
very scarce, nice
- ___ 142. Knotted Beads 10" vase - marigold
- ___ 143. Colonial 3 pc. console set - blue opaque -
candlesticks are neat
- ___ 144. Stag & Holly large ftd IC shaped bowl - marigold -
pastel & pretty
- ___ 145. Panther ftd round sauce - amethyst - rare color
- ___ 146. Panther ftd round sauce - marigold
- ___ 147. Scroll Embossed miniature compote - lavender
- pretty & rare
- ___ 148. Stippled Rays w/Scale band exterior 10" IC shaped
bowl - white - very rare bowl
- ___ 149. Pinecone 7" plate - blue - hard to find size
- ___ 150. Elephant's Foot Tree Trunk 13" funeral vase -
amethyst - extremely rare & desirable, a nice
vase
- ___ 151. Vintage round sauce - amethyst
- ___ 152. Imperial Grape water pitcher - smoke - very scarce
color
- ___ 153. Imperial Grape tumbler - smoke
- ___ 154. Coral 9" plate - marigold - extremely rare plate,
nice for one of these, has epoxy on one point
- ___ 155. Palm Beach 4" bowls w/Gooseberry interior (2) -
white - choice
- ___ 156. Three Fruits 9" plate w/BW back - purple
- ___ 157. Three Fruits 9" plate w/BW back - amethyst
- ___ 158. Three Fruits 9" plate w/BW back - marigold
- ___ 159. Grape & Cable shot glass - purple
- ___ 160. Stippled Grape & Cable 9" plate - sapphire -
super pretty plate, rare
- ___ 161. Rose Spray goblet shaped compote - marigold
- ___ 162. Rose Spray JIP shaped compote - ice blue - very
scarce
- ___ 163. Stretch Glass JIP shaped compote - ice green -
same as the Rose Spray compote w/o a pattern
- ___ 164. Peacocks 9" plate - purple - scarce & desirable
- ___ 165. Cosmos large ruffled bowl - marigold
- ___ 166. Fenton's Peacock at Urn ruffled bowl - white
- ___ 167. Wishbone & Spades large IC shaped bowl -
peach opal - very scarce, nice
- ___ 168. Iris ruffled compote - marigold
- ___ 169. Grape & Cable bon bon - white - scarce
- ___ 170. Cherry Circles bon bon - red - extremely rare
item & super, has spot of epoxy on the edge
- ___ 171. DeVilbiss perfumes (2) - marigold - choice
- ___ 172. Feather & Heart tumbler - green - scarce
- ___ 173. Feather & Heart tumbler - marigold - minor nick on
top edge
- ___ 174. Grape & Cable 9" plate w/BW back - green
- ___ 175. Grape & Cable 9" plate w/BW back - purple
- ___ 176. Imperial Grape ruffled bowl - clambroth
- ___ 177. Stippled Three Fruits ruffled bowl - white -
scarce color, nice
- ___ 178. Pansy single hdd nappy - amber
- ___ 179. Pansy single hdd nappy - marigold
- ___ 180. Grape & Cable master IC bowl - ice green - very
rare, has super irid., as good as they get!
- ___ 181. Grape & Cable master IC bowl - white - scarce,
nice
- ___ 182. Sun's Up hatpin - lavender
- ___ 183. Dimples & Brilliance hatpin - dark
- ___ 184. Faceted Teardrop hatpin - dark
- ___ 185. Garden Path hatpin - dark
- ___ 186. Tufted Throw pillow - dark
- ___ 187. Circle Basketweave hatpin - dark
- ___ 188. Spiral Dance hatpin - dark
- ___ 189. Top of the Morning hatpin - dark
- ___ 190. Waves hatpin - chocolate
- ___ 191. Fluffy Peacock water pitcher - blue - scarce
color for this nice pitcher
- ___ 192. Vintage Mug - marigold
- ___ 193. Fenton's Three Fruits 9" plate - marigold
- ___ 194. Wishbone & Spades IC shaped sauce - peach opal
- ___ 195. Singing Birds mug - ice blue - super nice
example of this rare mug
- ___ 196. Singing Birds mug - lavender - very pretty
mug, neat
- ___ 197. Imperial Grape wine - lime green
- ___ 198. Imperial Grape wine - olive green
- ___ 199. Imperial Grape wine - clambroth
- ___ 200. Elk's paperweight - green - extremely rare item,
one of the top lettered pieces, has two spots
of epoxy on base, but who cares!
- ___ 201. Holly ruffled compote - marigold
- ___ 202. God & Home tumbler - blue - very scarce, nice
- ___ 203. Pearly Dots 9" plate - amethyst
- ___ 204. Petal & Fan large IC shaped bowl - white - very
rare color & shape for this pattern
- ___ 205. Stippled Rays 6" plate - marigold

- ___ 206. **Grape Leaves ruffled bowl - ice blue - a extreme rarity that seldom ever sells, dark color & nice irid. on this great bowl**
- ___ 207. Little Flowers IC shaped sauce - marigold
- ___ 208. Grape & Cable cvd compote - purple - minor chip on rim
- ___ 209. Coin Dot large ruffled bowl - amethyst
- ___ 210. Cherry Chain 6" plate - blue - scarce
- ___ 211. **Dorsey & Funkenstein adv. handgrip plate - amethyst - super pretty & rare!**
- ___ 212. Chrysanthemum ruffled bowl - marigold
- ___ 213. Persian Medallion bon bon - celest blue - very rare bon bon, has a chip on the edge by the handle
- ___ 214. Miller's Furniture adv. Basketweave Open Edge basket w/two sides up - marigold
- ___ 215. Rooster Hatpins - red, blue, celest blue, white, lavender, amber, green - choice
- ___ 216. **Lotus & Grape 9" plate - green - very rare plate & super, a must for all plate collectors**
- ___ 217. Blackberry Spray ruffled hat - vaseline
- ___ 218. Near Cut Cologne bottle - green - very scarce, minor nick on stopper
- ___ 219. Flower Form compote - marigold
- ___ 220. Cherry Chain IC shaped sauce - white
- ___ 221. **Apple Blossom Twigs 9" plate - blue - scarce**
- ___ 222. Holly goblet shaped compote - marigold
- ___ 223. Enamelled Cherries tumblers (4) - blue - choice
- ___ 224. **Birmingham Age Herald ruffled bowl - amethyst - super pretty example for these rare, rare bowls**
- ___ 225. Fine Cut & Roses candy dish - white
- ___ 226. Heavy Grape chop plate - amber - scarce color
- ___ 227. Persian Garden 6" plates (2) - white - choice
- ___ 228. Persian Garden 6" plate - marigold
- ___ 229. Column Rib pin dish - vaseline - no marigold overlay
- ___ 230. **1910 Detroit Elks ruffled bowl - amethyst - rare & desirable, super**
- ___ 231. Peacock at the Fountain punch bowl base - marigold
- ___ 232. Little Barrel - smoke - nice
- ___ 233. Little Barrel - marigold - nice
- ___ 234. Diamond Rings ruffled bowl - smoke
- ___ 235. **M'burg Peacock at Urn ruffled Giant compote - amethyst - a nice example of this rare compote**
- ___ 236. Diamond & Column 12" vase - amethyst
- ___ 237. M'burg Peacock IC sauces (2) - amethyst - choice
- ___ 238. Big Butterfly, Butterflies, Six Plums, Squares & Triangles, Butlers Mirror, Colie Hat, Moire Beattle, Triad, Veiling Dance, all hatpins - choice
- ___ 239. Wide Panel epergne side lily - ice blue - if you need this they are tough to get
- ___ 240. **Knights Templar Dandelion Mug - ice green - rare, extremely desirable, nice**
- ___ 241. Heart and Vine 3 in 1 edge bowl - marigold
- ___ 242. Hattie round bowl - marigold
- ___ 243. **Gevurtz Bros. adv. round bowl - amethyst - very rare, has minor mold ruffness on edge**
- ___ 244. Swirl 14" chop plate - marigold
- ___ 245. N's Stippled Rays 10" PCE bowl - purple
- ___ 246. **Stippled Strawberry PCE bowl - blue - super nice, rare color & pretty**
- ___ 247. N's Stippled Rays ruffled bowl - amethyst
- ___ 248. **Oriental Poppy tumbler - ice green - very rare**
- ___ 249. Blackberry Block tumbler - blue
- ___ 250. **Poinsettia & Lattice ftd ruffled bowl - ice blue - super, nice color & irid., rare**
- ___ 251. Miniature ftd Shell - green
- ___ 252. Miniature ftd Shell - amethyst
- ___ 253. Footed Shell - amethyst
- ___ 254. Pinecone 6" plate - marigold
- ___ 255. Diamond Lace water pitcher - purple - super pretty
- ___ 256. Singing Birds tumblers (3) - green - choice
- ___ 257. Singing Birds tumblers (3) - purple - choice
- ___ 258. **Stippled Peacocks 9" plate - marigold - pastel & super, scarce**
- ___ 259. Miniature Morning Glory 6" vase - marigold
- ___ 260. Hobstar & Fruit ruffled bowl - peach opal - scarce
- ___ 261. Vintage tri-cornered sauce - amethyst
- ___ 262. **Swan salt - purple - as nice as I have ever sold**
- ___ 263. Fishnet epergne lily - purple
- ___ 264. Beaded necklace - blue
- ___ 265. Imperial Grape 6" plate - purple - nice
- ___ 266. Imperial Grape wine bottle - marigold - no stopper
- ___ 267. Grape & Cable punch cups (8) - purple - choice
- ___ 268. **Horse Medallion ftd round bowl - vaseline - scarce, has marigold overlay**
- ___ 269. Waffle Block tumbler - clambroth - scarce
- ___ 270. Engraved Grape candy dish bottom - ice green
- ___ 271. Diamond & Sunburst wine - marigold
- ___ 272. Grape & Cable sugar bowl lid - marigold
- ___ 273. **Exchange Bank adv. ruffled bowl - amethyst - very rare & desirable, super color & irid.**
- ___ 274. Grape & Cable punch cup - marigold
- ___ 275. Scales 6" plate - amethyst
- ___ 276. Floral & Grape tumbler - white - scarce
- ___ 277. Question Mark bon bon - marigold
- ___ 278. Rococco vase - smoke - nice
- ___ 279. Smooth Panels 9" plate - marigold
- ___ 280. Grape & Cable IC shaped sauce - white - nice, scarce
- ___ 281. Rooster Hatpins w/painted background - amber, white, blue, green, lavender, red, celest blue - choice
- ___ 282. Prisms miniature compote - marigold
- ___ 283. **M'burg Big Fish IC shaped bowl - green - fantastic radium irid., a very rare & desirable bowl**
- ___ 284. **M'burg Big Fish IC shaped bowl - amethyst - radium & nice, also very rare**
- ___ 285. Beauty 9" bud vase - amethyst
- ___ 286. Beauty 9" bud vase - marigold
- ___ 287. Miniature Basketweave basket - marigold
- ___ 288. Enameled lid to candy dish - marigold
- ___ 289. Maple Leaf butter dish bottom - amethyst - chip
- ___ 290. Crackle car vase - marigold
- ___ 291. Panels sherbert - marigold
- ___ 292. Lattice & Daisy tumbler - marigold
- ___ 293. Flute punch bowl base - marigold
- ___ 294. Basketweave hat shape - marigold
- ___ 295. Star Spray bowl - marigold
- ___ 296. Crackle 6" plate - marigold
- ___ 297. Dog toothpick holder - blue - old or new?