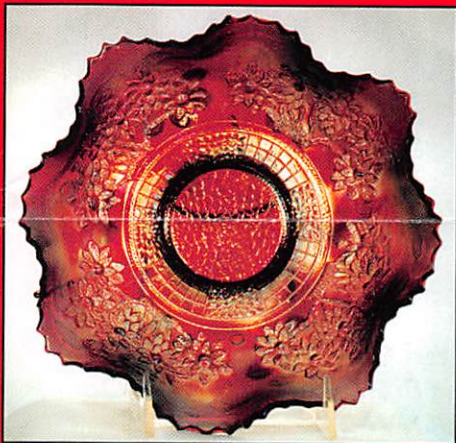


# CARNIVAL GLASS

# AUCTION

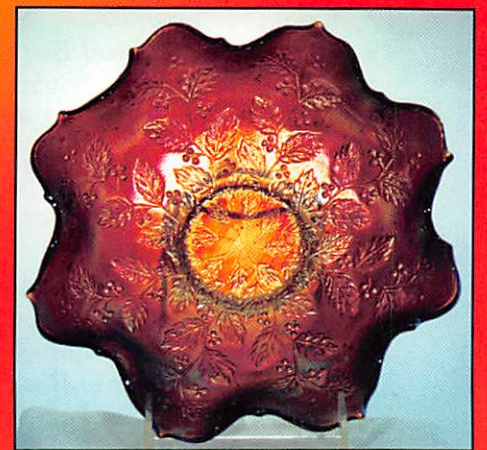
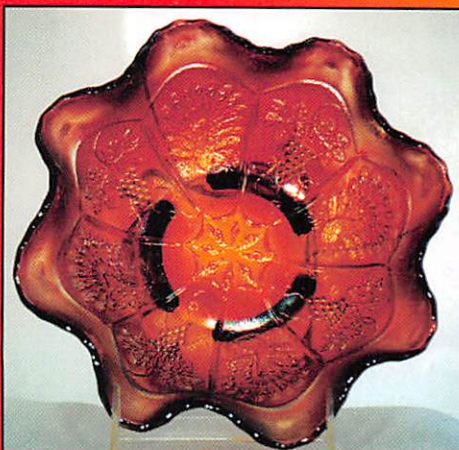
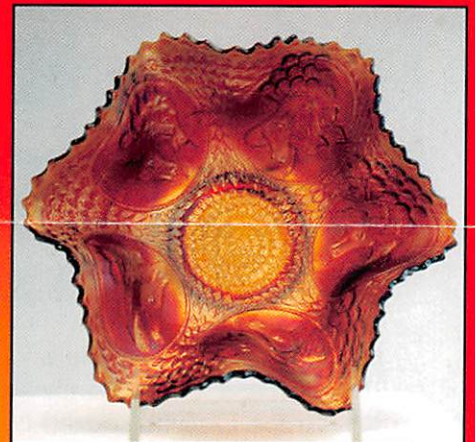


**SATURDAY, JUNE 14, 1997 - 9:30 A.M.**  
**HOLIDAY INN - 1612 SISK ROAD - MODESTO, CALIFORNIA**



**FRIDAY PREVIEW:  
TO BE ANNOUNCED**

**SATURDAY PREVIEW:  
8:30 A.M.**



**Motel Reservations: May Be Made By Calling Holiday Inn# (209) 521-1612.**

# CARNIVAL GLASS AUCTION

## SATURDAY, JUNE 14, 1997 - 9:30 A.M.

### HOLIDAY INN - 1612 SISK ROAD

### MODESTO, CALIFORNIA

The Northern California Carnival Glass Association Is Having Their Annual Convention,  
And You Are Invited To Attend! Topping This Year's Auction Is The Collection From  
Edward & Judith Kasper Of California And A Private Collection From Alaska.  
Take A Look At The List And See Why Sunny California Is The Place To Be.

**FRIDAY PREVIEW: TO BE ANNOUNCED - SATURDAY PREVIEW: 8:30 A.M.**

**MOTEL RESERVATIONS:** May Be Made By Calling Holiday Inn# (209) 521-1612.  
**WRITE-IN BIDS:** Accepted With A Written Statement Of The Amount Of Your Bid.  
Deadline, Thursday Noon.

**PLEASE NOTE - There Is A 5% Handling Charge Added To The Selling Price Of All Write-In Bids.**  
**Your Write-In Will Be Taken To A Professional Pack-N-Ship.**  
**For Your Convenience, Fax# (316) 747-2145.**

- |   |   |
|---|---|
| <p>__1 (4) Tiger Lily Tumblers - M</p> <p>__2 Grape &amp; Cable Nappy - A</p> <p>__3 Grape Delight Footed Nut Bowl - M</p> <p>__4 Bouquet &amp; Lattice Sauce - M</p> <p>__5 Nautilus W/ One End Turned Down - PO</p> <p>__6 Coin Dot Bowl - T Poor Color</p> <p>__7 Grape Delight Rosebowl - M</p> <p>__8 Peacock Tail Tri-cornered Nappy - G</p> <p>__9 Pansy Creamer And Sugar - M</p> <p>__10 Windflower Bowl - M</p> <p>__11 <b>Flared Eight-sided Bushel Basket - M</b></p> <p>__12 Coin Dot Bowl - A</p> <p>__13 <b>Eight-sided Bushel Basket - M</b></p> <p>__14 Wreathed Cherry Banana Boat - P</p> <p>__15 <b>Round Bushel Basket - Horehound - Great Iridescence</b></p> <p>__16 Leaf Chain Plate - G</p> <p>__17 <b>Eight-sided Bushel Basket - P</b></p> <p>__18 Holly Plate - B</p> <p>__19 <b>Eight-sided Bushel Basket - A -super Iridescence Inside &amp; Out</b></p> <p>__20 <b>Corn Vase - Ice Green</b></p> <p>__21 <b>Eight-sided Bushel Basket - Ice Blue</b></p> <p>__22 Holly Plate - Black Amethyst</p> <p>__23 Child'S Banana Boat Cherry Circles - W</p> | <p>__24 Orange Tree Plate - Clambroth</p> <p>__25 <b>Beautiful!! Round Bushel Basket In Aqua Opal</b></p> <p>__26 Orange Tree Plate - W</p> <p>__27 <b>Three Fruits Stippled Plate - Unusual Light Purple - Great Iridescence</b></p> <p>__28 Round Up Plate - A Almost Flat, Curled Up At Edge</p> <p>__29 Greek Key Ruffled Bowl - A</p> <p>__30 <b>Peacock And Urn Plate - M Bearded Berry On Reverse - Excellent Iridescence</b></p> <p>__31 Grape Delight Rosebowl - B</p> <p>__32 Three Fruits Plate - G</p> <p>__33 (6) Pedestal Grape &amp; Cable Sherbets - A</p> <p>__34 Three Fruits Plate- M</p> <p>__35 Grape &amp; Cable Whimsy Punch Cup - A</p> <p>__36 Star Medallion Plate - Clambroth</p> <p>__37 Grape &amp; Cable Whimsy Tumbler - P</p> <p>__38 <b>Scroll Embossed Plate - G, Radium Finish</b></p> <p>__39 10 1/2" Grape &amp; Cable Ice Cream Shaped Bowl - A</p> <p>__40 Three Fruits Plate - G</p> <p>__41 <b>Grape &amp; Cable Water Pitcher And Six Tumblers - P</b></p> <p>__42 Holly Bowl - M Round</p> |
|---|---|

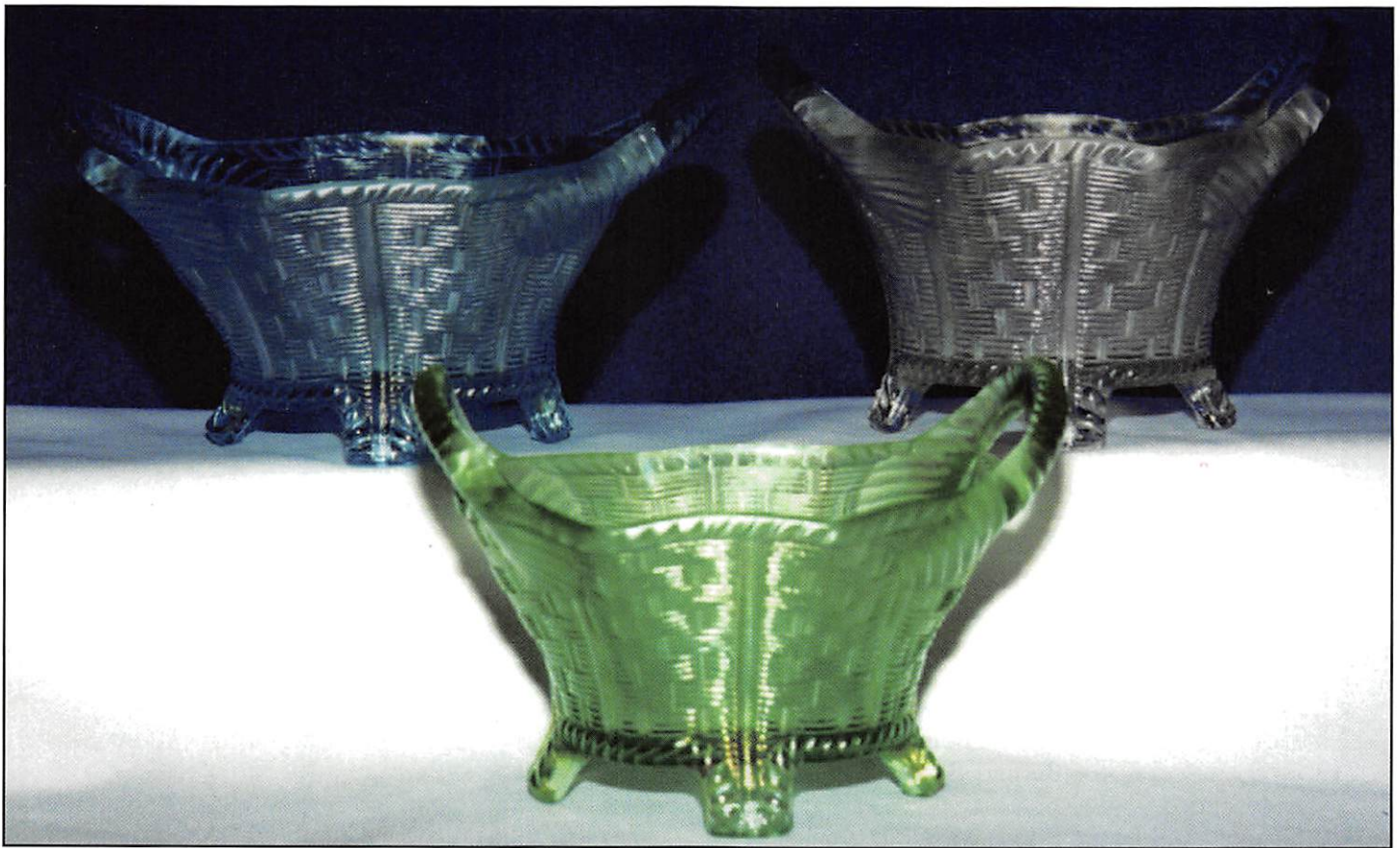


- \_\_43 **Grape & Cable Water Pitcher And Six Tumblers - P**
- \_\_44 Plaid Bowl - M
- \_\_45 **Large Grape & Cable Open Compote - 8 1/4" X 10 1/2" - P**
- \_\_46 Plaid Bowl - B
- \_\_47 Large Grape & Cable Open Compote -a, Flange Broken
- \_\_48 Dragon & Strawberry Bowl - M Ruffled, Collar Base
- \_\_49 Grape & Cable Plate - Good Iridescence - A
- \_\_50 **Orange Tree Bowl - Red Ruffled, Collar Base, Tiny Flake**
- \_\_51 **Grape & Cable Dresser Tray - Nice Iridescence - A**
- \_\_52 Dragon & Strawberry Bowl - M Round, Collar Base
- \_\_53 Grape & Cable Powder Box - P
- \_\_54 Pansy (Imperial) Bowl - P, Ruffled, Collar Base
- \_\_55 **Grape & Cable Punch Bowl W/ Base And Seven Punchcups - A**
- \_\_56 **Peacock On The Fence Bowl - Amethyst W/ Electric Blue Iridescence, Pie Crust Edge - Outstanding Iridescence And Color!!**
- \_\_57 Grape & Cable Powder Box - P
- \_\_58 Tumble-up - M
- \_\_59 Grape & Cable Banana Boat - Super Great Iridescence - A
- \_\_60 **Holly Bowl - Red Ruffled, Collar Base**
- \_\_61 **Grape & Cable Perfume Bottle - Dainty & Cute - Perfect Condition Even The Stopper - P**
- \_\_62 Coin Dot Bowl - M pce
- \_\_63 **Pair Of Grape & Cable Candlestick Holders -A**
- \_\_64 Coin Dot Bowl - P pce
- \_\_65 **Grape & Cable Cracker Jar - Nice Iridescence - P**
- \_\_66 Lotus & Grape Footed Bowl - G
- \_\_67 Grape & Cable Creamer & Sugar - P
- \_\_68 Captive Rose Ruffled Bowl - B
- \_\_69 **Grape & Cable Four Piece Table Set - A**
- \_\_70 **Nippon Bowl - Ice Blue Pce, Collar Base**
- \_\_71 Grape & Cable Large Covered Compote - A
- \_\_72 Windmill Bowl - M Collar Base
- \_\_73 Grape & Cable Cologne Bottle - P
- \_\_74 Holly Nut Bowl - M
- \_\_75 Grape & Cable Large Covered Compote - A
- \_\_76 Dragon & Lotus Nut Bowl - M
- \_\_77 Grape & Cable Cologne Bottle - P
- \_\_78 Persian Medallion 6" Plate - B
- \_\_79 **Grape & Cable Sweetmeat - P**
- \_\_80 **Horses Head Fluted Bowl - Red**
- \_\_81 **Grape & Cable Sweetmeat - A**
- \_\_82 Persian Medallion 6" Plate - M
- \_\_83 Grape & Cable Two-handled Bon- Bon - A
- \_\_84 **"Seasons Greetings Eat Paradise Sodas 6" Plate - A**
- \_\_85 **Grape & Cable Whiskey Decanter And Two Shot Glasses - Really Great!!! - A**
- \_\_86 Pine Cone 6" Plate - B
- \_\_87 **Buzz Star Cruet W/ Stopper - Rare! - G**
- \_\_88 Pine Cone 6" Plate- M
- \_\_89 **Outstanding Townpump - P - Purchased From Hartung Collection**
- \_\_90 Peacock & Grape Footed Bowl - Red
- \_\_91 First Edition Third Book Of Carnival Glass One Hundred Patterns By Marion T. Hartung And Signed
- \_\_92 Stretch Carnival 6" Plate - Red
- \_\_93 First Edition Fifth Book Of Carnival Glass By Marion T. Hartung And Signed
- \_\_94 Stretch Carnival 8" Plate - Red
- \_\_95 **Rose Show Bowl - Aqua Opal**
- \_\_96 Stretch Carnival 6" Plate - Vaseline
- \_\_97 Heart & Vine Bowl - M
- \_\_98 Stretch Carnival 6" Plate - Painted Flowers
- \_\_99 (2) Sailboats Berry Dishes - M One Has A Crack
- \_\_100 **Grape & Cable Footed Plate - Ice Green**
- \_\_101 Feathered Serpent Cre Bowl - M
- \_\_102 Stretch Carnival 6" Plate-Vaseline (Big Chip)
- \_\_103 Orange Tree Rosebowl - M Chip On Foot
- \_\_104 Imperial's Grape 9" Plate - Amber
- \_\_105 Grape Delight Nutbowl - B Chip On Foot
- \_\_106 Peacock & Grape Footed Bowl - G
- \_\_107 Blackberry Gravy Boat - A Chip On Foot
- \_\_108 Horses Head Ruffled Bowl - Lt M
- \_\_109 Little Flowers Berry Dish - A Small Chip
- \_\_110 Grapevine & Lattice 6" Plate - W

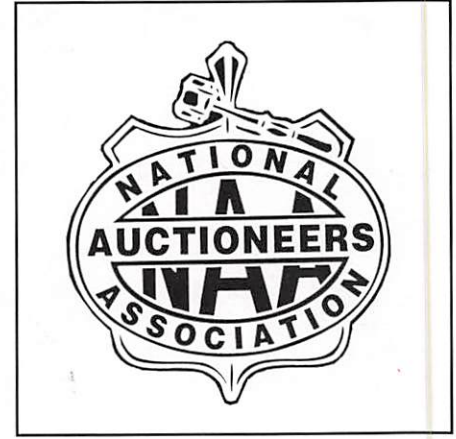
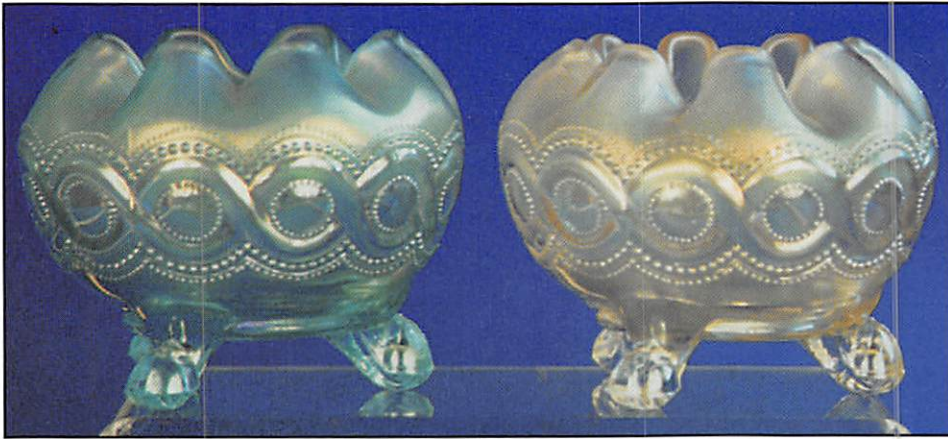


- \_\_ 111 Two-handled Wide Panel Celery - M  
Chip On Base
- \_\_ 112 Sailboat Sauce - Lt M
- \_\_ 113 (2) Tumblers - Nearcut - G And Butterfly And  
Berry - B Small Flakes
- \_\_ 114 Two Tumblers - Hobstar Band (Pale M) &  
Wide Panel Variant (Pale M)
- \_\_ **115 Fine Rib Vase 10 1/4" - Aqua Opal**
- \_\_ 116 Beaded Cable Rose Bowl - G
- \_\_ 117 11 1/2" Thin Rib Vase - Vaseline
- \_\_ 118 Beaded Cable Rose Bowl - A
- \_\_ 119 Two Tumblers - Fruit Lustre (Pale M) &  
Butterfly & Berry (M) Two Big Chips On Base
- \_\_ **120 Beaded Cable Rose Bowl - Aqua Opal**
- \_\_ 121 Two Tumblers - Lustre & Clear (Pale M) &  
Studs Juice (Pale M)
- \_\_ **122 Beaded Cable Rose Bowl - M**
- \_\_ **123 Jack In The Pulpit Vase 9 1/4" - Aqua**
- \_\_ 124 Beaded Cable Rose Bowl - A
- \_\_ 125 Fine Rib Vase 10 1/4" - Red
- \_\_ 126 Diamond And Rib Vase 11 1/2" - A
- \_\_ 127 Concave Diamond Tumbler W/ Coaster - lb
- \_\_ 128 Beaded Cable Rose Bowl - M
- \_\_ 129 Northwood's Bushel Basket Flared - A -  
Handle Glued Together
- \_\_ **130 Beaded Cable Rose Bowl - Ice Blue**
- \_\_ 131 Beaded Cable Rose Bowl - Custard Not Iridized
- \_\_ **132 Northwood's Bushel Basket- Flared -  
Cobalt Blue**
- \_\_ **133 Beaded Cable Rose Bowl - Cobalt Blue**
- \_\_ **134 Northwood's Bushel Basket - Flared - W**
- \_\_ **135 Beaded Cable Rose Bowl - Aqua Opal**
- \_\_ 136 Northwood's Bushel Basket - Round - M
- \_\_ **137 Beaded Cable Rose Bowl - Aqua**
- \_\_ 138 Northwood's Bushel Basket - Round - P
- \_\_ 139 Beaded Cable Rose Bowl - P
- \_\_ **140 Northwood's Bushel Basket - Flared - Ice  
Green**

- \_\_ 141 Beaded Cable Rose Bowl - G
- \_\_ 142 Northwood's Bushel Basket - Round - Black  
Amethyst - Not Iridized
- \_\_ 143 Beaded Cable Rose Bowl - G
- \_\_ 144 Northwood's Bushel Basket - Round - G
- \_\_ **145 Beaded Cable Rose Bowl - IGO** Straight Up  
Crimped Edge, Not Iridized
- \_\_ 146 Northwood's Bushel Basket - Round -  
Custard, Not Iridized
- \_\_ 147 Beaded Cable Rose Bowl - M
- \_\_ **148 Northwood's Bushel Basket - Round - P**
- \_\_ 149 Beaded Cable Rose Bowl - G
- \_\_ **150 Northwood's Bushel Basket - Round - Ice  
Green**
- \_\_ **151 Beaded Cable Rose Bowl - W**
- \_\_ **152 Northwood's Bushel Basket - Round - W**
- \_\_ 153 Beaded Cable Rose Bowl - IBO Straight Up  
Crimped Edge, Not Iridized
- \_\_ 154 Northwood's Bushel Basket - Round - Blue  
Opal, Not Iridized
- \_\_ **155 Beaded Cable Rose Bowl - Aqua Opal**
- \_\_ **156 Northwood's Bushel Basket - Round -  
Cobalt Blue**
- \_\_ 157 Peacock & Grape Bowl - Light M - Round ,  
Collar Base
- \_\_ 158 Northwood's Bushel Basket - Round - IGO -  
not Iridized
- \_\_ 159 Peacock & Grape Ruffled Bowl - B - Collar Base
- \_\_ **160 Northwood's Bushel Basket - Round -  
Aqua Opal**
- \_\_ **161 Northwood's Bushel Basket - Flared -  
Dark M**
- \_\_ 162 Peacock & Grape Ruffled Bowl - M - Collar Base
- \_\_ **163 Northwood's Bushel Basket - Flared -  
Dark M**
- \_\_ 164 Peacock & Grape Ruffled Bowl - Cobalt B -  
Collar Base
- \_\_ **165 Northwood's Bushel Basket - Flared - Ice Blue**



- \_\_ 166 Peacock & Grape Ruffled Bowl - Vaseline - Collar Base
- \_\_ 167 Northwood's Bushel Basket - Flared - G
- \_\_ 168 Peacock & Grape Ruffled Bowl - Lt B - Collar Base, Very Unusual
- \_\_ 169 Northwood's Bushel Basket - Flared - A
- \_\_ **170 Peacock & Grape Ruffled Bowl - Rich Deep M - Footed**
- \_\_ 171 Northwood's Bushel Basket - Flared - P
- \_\_ 172 Peacock & Grape Ruffled Bowl - B - Footed, Small Flake On Back Of One Tip
- \_\_ 173 Northwood's Bushel Basket - Flared - G
- \_\_ 174 Peacock & Grape Ruffled Bowl - A - Footed
- \_\_ **175 Dragon And Lotus Round Bowl - Red**
- \_\_ 176 10 1/4" Long Thumbprint Vase - A
- \_\_ **177 Dragon And Lotus Plate - B**
- \_\_ 178 11 3/4" Thin Rib Vase - M
- \_\_ 179 Dragon And Lotus Round Bowl - Lavender
- \_\_ **180 Dragon And Lotus Round Bowl - Red**
- \_\_ 181 Wreathed Cherry Sauce Dish - Lt M
- \_\_ 182 Dragon And Lotus Three In One Edge Bowl - G
- \_\_ 183 Wreathed Cherry Sauce Dish - A
- \_\_ 184 Two Vases - Pattern Unknown
- \_\_ **185 Dragon And Lotus Ruffled Bowl - Red**
- \_\_ 186 Jeweled Heart Tumbler - M
- \_\_ 187 Dragon And Lotus Ruffled Bowl - G
- \_\_ 188 Buzz Saw Cruet - M - No Stopper
- \_\_ 189 Dragon And Lotus Ruffled Bowl - Vaseline
- \_\_ **190 Dragon And Lotus Ruffled Bowl - Red - chip**
- \_\_ 191 Corn Vase - G
- \_\_ **192 Dragon And Lotus Ruffled Bowl - Vaseline**
- \_\_ 193 Diamond Lace Tumbler - P
- \_\_ 194 Dragon And Lotus Ruffled Bowl M W/ B Collar Base
- \_\_ **195 Rare Dragon And Lotus Ruffled Bowl - Aqua Opal**
- \_\_ 196 Open Edge Basket - M - Poor Color
- \_\_ 197 Dragon And Lotus Ruffled Bowl - Amber
- \_\_ 198 Bouquet And Lattice Cup And Saucer - M
- \_\_ 199 Three Fruits Plate - Lavender
- \_\_ 200 Dragon And Lotus Ruffled Bowl - Lavender - Gold Iridescence
- \_\_ 201 Three Fruits Plate - M
- \_\_ 202 Dragon And Lotus Three In One Edge Bowl - Lavender/Amethyst - Flake On One Tip
- \_\_ 203 Dragon And Lotus Ruffled Bowl - Amber
- \_\_ 204 Dragon And Lotus Round Bowl - B - Silvery Iridescence
- \_\_ 205 Dragon And Lotus Round Bowl - G - Footed - (Has A "Fly" In Glass)
- \_\_ 206 Dragon And Lotus Round Bowl - B - Silvery Iridescence
- \_\_ 207 Dragon And Lotus Round Bowl - Amber
- \_\_ 208 Dragon And Lotus Round Bowl - M
- \_\_ 209 Dragon And Lotus Round Bowl - Lavender Blue
- \_\_ 210 Dragon And Lotus Ruffled Bowl - Cobalt Blue - One Edge Came Out Of The Mold Straight, Interior Wear
- \_\_ 211 Dragon And Lotus Round Bowl - A
- \_\_ 212 Dragon And Lotus Ruffled Bowl - Lt Marigold Opal



- \_\_213 Dragon And Lotus Ruffled Bowl - Lt M
- \_\_214 Dragon And Lotus Ruffled Bowl - G - Footed
- \_\_215 Dragon And Lotus Ruffled Bowl - A - Footed
- \_\_216 Dragon And Lotus Ruffled Bowl - Vaseline Opalescent - Footed
- \_\_217 Dragon And Lotus Ruffled Bowl - Amber
- \_\_218 Dragon And Lotus Round Bowl - G - Footed, Mold Roughness On One Foot
- \_\_219 Dragon And Lotus Ruffled Bowl - B - Silvery Iridescence
- \_\_220 Dragon And Lotus Bowl - Vaseline Opalescent -footed
- \_\_221 Dragon And Lotus Round Bowl - Lt M
- \_\_222 Dragon And Lotus Ruffled Bowl - G - Footed
- \_\_223 Dragon And Lotus Round Bowl - M
- \_\_224 Dragon And Lotus Ruffled Bowl - M - Footed
- \_\_225 Dragon And Lotus Ruffled Bowl - M
- \_\_226 Dragon And Lotus Ruffled Bowl - G
- \_\_227 Dragon And Lotus Ruffled Bowl - B - Footed
- \_\_228 Dragon And Lotus Round Bowl - Lt M - Footed
- \_\_229 Dragon And Lotus Ruffled Bowl - Lt M
- \_\_230 Dragon And Lotus Ruffled Bowl - G
- \_\_231 Dragon And Lotus Ruffled Bowl - B - Silvery Iridescence
- \_\_232 Dragon And Lotus Ruffled Bowl - G - One Ruffle Is Chipped
- \_\_233 Dragon And Lotus Ruffled Bowl - A - Footed
- \_\_234 Dragon And Lotus Ruffled Bowl - G - Footed
- \_\_235 Coin Dot Three In One Edge Bowl - A - Poor Iridescence
- \_\_236 Grape & Cable Low Bowl - Red, Not Iridized
- \_\_237 Dragon And Lotus Ruffled Bowl - G - Depression Glass
- \_\_238 Dragon And Lotus Round Bowl - Pink - Depression Glass
- \_\_239 Sherbet Dish - Red Stretch - Amberina
- \_\_240 Grape & Cable Punch Bowl Base - P
- \_\_241 Grape & Cable Butter Dish Lid - G - Big Crack

## New Carnival Glass:

- \_\_242 (6) Panelled Grape Tumblers - Westmoreland - Lime Green
- \_\_243 (6) Hobstar Variant Tumblers - Smith - IB
- \_\_244 High Hob Pitcher & (6) Tumblers - Westmoreland - Pink
- \_\_245 (8) Ig Tumblers - M -
- \_\_246 (6) Panelled Grape Juice Tumblers - Westmoreland - P
- \_\_247 (6) Checkerboard Tumblers - Westmoreland - Lime Green
- \_\_248 (6) Panelled Grape Tumblers - Westmoreland - Blue Opalescent
- \_\_249 (6) Hobstar Variant Tumblers - Smith - IG
- \_\_250 (6) Ball And Swirl Tumblers - Westmoreland To L.G.Wright For Levay - Cerise Red
- \_\_251 (6) Ball And Swirl Tumblers - Westmoreland To L.G.Wright For Levay - P
- \_\_252 Choice Of (15) Misc. Tumblers : Singing Birds, B; Maple Leaf, A & W; Grape & Cable, W,B,P, & R; Inverted Thistle, IB; Tiger Lily, Pink; Inverted Fan & Feather, B&M; Lustre Rose, P; Dahlia, W; Octagon Var., R; & Grapevine Lattice, P
- \_\_253 (4) Imperial's Grape Water Goblet, M
- \_\_254 Lustre Clear Mug, M
- \_\_255 Corn Vase 1978 H.O.A.C.G.A. , Red
- \_\_256 Corn Vase 1982 H.O.A.C.G.A. - Ib
- \_\_257 Hat Pin Holder 1980 H.O.A.C.G.A.- Good Luck Pattern - IG
- \_\_258 (6) Checkerboard Tumblers - IB
- \_\_259 (6) Checkerboard Juice Tumblers - Blue Opalescent
- \_\_260 (2) Panelled Grape Cruet - Blue Opalescent
- \_\_261 Two Tumblers- Dahlia, IB & God And Home, IB
- \_\_262 Imperial Grape Juice Pitcher - M
- \_\_263 High Hob Pitcher And Six Tumblers - Blue Opalescent
- \_\_264 3 Piece Sugar, Creamer & Tray, Lime - Indiana Glass In Original Box
- \_\_265 Ball & Swirl Pitcher - Cerise Red
- \_\_266 Hobstar Pitcher - IB



- \_\_267 Checkerboard Pitcher - IG
- \_\_268 Panelled Grape Juice Pitcher - P
- \_\_269 Hobstar Pitcher - IG
- \_\_270 Ball & Swirl Pitcher - P
- \_\_271 Imperial Grape Pitcher - M
- \_\_272 Checkerboard Pitcher - IB
- \_\_273 Panelled Grape Pitcher - Blue Opalescent
- \_\_274 Panelled Grape Pitcher - Lime Green
- \_\_275 Checkerboard Pitcher - Blue Opalescent
- \_\_276 (6) Imperial Grape Punch Cups- G
- \_\_277 Northern Calif. Carnival Club Plate -golden Gate Bridge, 1978 - IG
- \_\_278 Northern Calif. Carnival Club Plate - Golden Bear, 1969-1979 - Red
- \_\_279 Northern Calif. Carnival Club Plate - California Quail, 1980 - B
- \_\_280 Northern Calif. Carnival Club Plate - Golden Gate Bridge, 1978 - IG
- \_\_281 Pair Of Acanthus Candle Stick Holder - M
- \_\_282 Carolina Dogwood - Red
- \_\_283 Bicentennial Eagle Plate- B
- \_\_284 Bicentennial Spirit Of 76 Plate - B
- \_\_285 Bicentennial Independence Hall Plate - B
- \_\_286 Bicentennial Liberty Bell - B
- \_\_287 Hen On Nest - Smokey Blue
- \_\_288 Drapery Rose Bowl - P
- \_\_289 9 1/4" Three Footed Bowl - Frosty White
- \_\_290 (4) Grape Wine Glass, B
- \_\_291 Hen On Nest - Smokey Blue
- \_\_292 Peacock Tails Bowl - P
- \_\_293 Hobstar Band Deep Bowl- Red
- \_\_294 Choice Of Six Pacific Northwest Mugs- lb, Red, Mo, Cb, Pearlized W, Teal
- \_\_295 Persian Medallion Comp - Red
- \_\_296 Town Pump IcgA Souvenir 1977
- \_\_297 Homestead Plate - W
- \_\_298 Loving Cup 1979 H.O.A.C.G.A. Souvenir - Red
- \_\_299 Good Luck Bowl H.O.A.C.G.A. 1984 - Red
- \_\_300 Loving Cup 1983 H.O.A.C.G.A. Souvenir - Marigold On Milk Glass
- \_\_301 Princess Punch Set - Indiana Glass - Punch Bowl, 12 Cups, 12 Hooks, Plastic Ladle - Iridescent Gold - Perfect Condition
- \_\_302 Princess Punch Set - Indiana Glass - Punch Bowl, 12 Cups, 12 Hooks, Plastic Ladle - Iridescent Blue - Perfect Condition
- \_\_303 Princess Punch Set - Indiana Glass - Punch Bowl, 12 Cups, 12 Hooks, Plastic Ladle - Iridescent Lime - Perfect Condition
- \_\_304 Set Of Harvest Canisters, Green - Graduated Sizes - Indiana Glass
- \_\_305 Large Harvest Pitcher, Green - Indiana Glass



**FRIDAY PREVIEW: TO BE ANNOUNCED - SATURDAY PREVIEW: 8:30 A.M.**  
**Motel Reservations: May Be Made By Calling Holiday Inn# (209) 521-1612.**



**SATURDAY, JUNE 14, 1997 - 9:30 A.M.**  
**HOLIDAY INN - 1612 SISK ROAD - MODESTO, CALIFORNIA**

# **CARNIVAL GLASS AUCTION**



**WOODY**  
**AUCTION**  
Douglass, KS 67039 (316) 747-2694

Bulk Rate  
U.S. Postage  
**PAID**  
Permit No.  
1148  
Wichita, KS

## **CARNIVAL GLASS**

