



AUCTION

H.O.A.C.G.A. Convention

Daryl and Norma Strohm Collection

Saturday, May 3, 1997 -- 9:30 A.M.

Embassy Suites • 7640 NW Tiffany Springs Parkway • Kansas City, MO

Call (816) 891-7788 for reservations



SEECK

Seeck Auctions

515-424-1116

HOACGA Convention Auction

Saturday, May 3, 1997 -- 9:30 A.M.

Embassy Suites -- Kansas City, MO

How time flies when you're having fun! It's already HOACGA time. This years convention auction looks to be pretty terrific. Not only is it an outstanding facility, but we will be selling the Carnival Glass collection of Daryl and Norma Strohm of Kansas City. What a collection - water sets, punch sets, plates, bowls, vases, etc., etc., etc. Definitely some fantastic looking glass for everyone. Come join in the fun at the Embassy Suites Hotel which is near the Kansas City airport!

Preview: Friday evening.

HOACGA Convention information: Contact HOACGA President Robert Grissom at (816)356-5320.

Reservations: Call (816)891-7788 (Please ask for the HOACGA Convention block of rooms)

Terms: Cash or Check w/proper I.D.

WRITE-IN BID POLICY

1. Write-in bids will be accepted by sending the numbers of the item(s) desired and the amount bid on each to:
Seeck Auctions, PO Box 377, Mason City, Iowa 50402.
 2. If known by Auction Company, bids may be done over the telephone. (515)424-1116.
 3. There is a \$5 handling charge for each successful bid. Shipping and insurance charges are additional.
 4. Bidders will be notified by a phone call if their bid(s) are successful. This call will be made 1 - 3 days after the auction is over.
 5. Please have all bids in by Tuesday, April 29th. All bids (by mail or phone) after this date may not be carried out.
 6. If you do not receive an item that sold for less than your bid, assume we cancelled your bid because the piece of glass had below average color, manufacture problem, damage or was not listed correctly.
 7. To receive price lists send: \$20 -- for this auction and next 7 auctions
\$5 -- for only this auction or individual auction (please specify)
- Send to the above address. (Please allow 2 - 4 weeks for price results)

You may now email us with your write-in bids! Our email address is: seeckauction@willowtree.com
Continue to include the numbers of the item(s) you would like to bid on and amount bid on each, also include your telephone number AND email address.

- | | |
|---|--|
| <input type="checkbox"/> 1. Double Scroll candlesticks - marigold | <input type="checkbox"/> 16. Octagon 4 pc. tableset - marigold - tough to find as a set |
| <input type="checkbox"/> 2. Colonial 7 pc. waterset w/Imperial Cross Mark - marigold | <input type="checkbox"/> 17. Rustic 18" funeral vase w/plunger base - amethyst - super color & irid., very rare, neat! |
| <input type="checkbox"/> 3. Star Medallion 9" plate - marigold | <input type="checkbox"/> 18. Lotus & Grape ruffled bowl - green |
| <input type="checkbox"/> 4. Snow Fancy breakfast creamer & sugar - marigold | <input type="checkbox"/> 19. Fluffy Peacock 7 pc. waterset - amethyst - super pretty irid., very scarce |
| <input type="checkbox"/> 5. Iris ruffled compote - green | <input type="checkbox"/> 20. Imperial Grape ruffled bowl - lavender - pretty |
| <input type="checkbox"/> 6. Luster Rose ftd fernery - marigold | <input type="checkbox"/> 21. Garden Path Variant large ruffled bowl - white - frosty & super, not many around |
| <input type="checkbox"/> 7. Six Petals ruffled bowl - white - pretty | <input type="checkbox"/> 22. Zipper Heart 7 pc. berry set - purple - pretty |
| <input type="checkbox"/> 8. Waffleblock 8 pc. punch set - marigold | <input type="checkbox"/> 23. Three Fruits 9" plate w/BW back - green - super w/blue irid. |
| <input type="checkbox"/> 9. Scales 6" plate - teal | <input type="checkbox"/> 24. Three Fruits 9" plate w/BW back - marigold - pretty |
| <input type="checkbox"/> 10. M'burg 1910 Detroit Elks IC shaped bowl - amethyst - super example, extremely rare, very desirable in IC shape | <input type="checkbox"/> 25. Four Seventy Four 8 pc. punch set - purple - super fantastic w/blue irid. one to ever sell at auction and only complete set known |
| <input type="checkbox"/> 11. Vineyard 7 pc. water set - marigold - nice | |
| <input type="checkbox"/> 12. Orange Tree 9" plate - blue - scarce, nice | |
| <input type="checkbox"/> 13. Orange Tree powder jar - marigold | |
| <input type="checkbox"/> 14. Grape & Cable banana boat - green - very pretty & scarce | |
| <input type="checkbox"/> 15. Grape & Cable banana boat - marigold - dark & pretty | |

- ___ 26. Four Seventy Four 8 pc. punch set - marigold
 ___ 27. Peacock & Grape ruffled bowl - green
 ___ 28. Peacock & Grape ruffled bowl - blue
 ___ 29. Peacock & Grape ruffled bowl - marigold
 ___ 30. **Blueberry 7 pc. waterset - marigold - dark from top to bottom, super & hard to find**
 ___ 31. Leaf Columns 6" squatty vase - green - pretty
 ___ 32. **Luster Rose 4 pc. table set - purple - extremely rare in purple, super pretty**
 ___ 33. Luster Rose 4 pc. table set - marigold
 ___ 34. Three Fruits 9" plate w/plain back - marigold - pumpkin & fabulous
 ___ 35. **M'burg Courthouse 3 in 1 edge bowl - lavender - one of 2 known that has satin irid., super pretty, insignificant nick on base, one of my favorites in this auction!**
 ___ 36. Scotch Thistle crimped edge ruffled compote - green
 ___ 37. **Diamond Points 6 1/2" squatty vase - ice green - super & scarce**
 ___ 38. Octagon 8 pc. wine set - marigold
 ___ 39. **Dragon & Lotus IC shaped bowl - red - cherry color w/red irid., rare & desirable**
 ___ 40. **Dragon & Lotus IC shaped bowl - amber - a nice dark amber w/great irid.**
 ___ 41. **Dragon & Lotus IC shaped bowl - vaseline - nice**
 ___ 42. Dragon & Lotus IC shaped bowl - green
 ___ 43. Dragon & Lotus IC shaped bowl - black amethyst
 ___ 44. Dragon & Lotus IC shaped bowl - marigold
 ___ 45. **Stippled Grape & Cable small size 8 pc. punch set - marigold - dark & super, tough stippled, rare**
 ___ 46. Grape & Cable spt ftd 9" plate - marigold
 ___ 47. **Dragon & Strawberry IC shaped collar based bowl - blue - very pretty & very desirable pattern, rare**
 ___ 48. N's Wide Panel 4 pc. table set - marigold - scarce set
 ___ 49. Singing Birds mug - marigold
 ___ 50. **M'burg Little Stars 7" plate - green - satin - very, very rare, a piece that is a M'burg rarity**
 ___ 51. Lined Lattice 9" vase - white
 ___ 52. **Dandelion 7 pc. water set - marigold - dark & beautiful, best set I've seen**
 ___ 53. **Heavy Grape 6" ruffled bowl - purple - super blue irid.**
 ___ **Holly 9" plate - amethyst - super pretty**
 ___ **stet irid., scarce color**
 ___ **9" plate - teal - unusual color, I've**
 ___ **not seen before!**
 ___ 56. Holly 9" plate - blue - nice
 ___ 57. Holly 9" plate - marigold - dark w/super stretchy irid.
 ___ 58. **Hearts & Flowers ruffled compote - aqua opal - pastel & gorgeous, one of the nicer ones**
 ___ 59. Lions IC shaped bowl - marigold
 ___ 60. **Leaf Chain ruffled bowl - red - cherry & super, hard to find**
 ___ 61. Thistle banana boat - green - very pretty, scarce
 ___ 62. Thistle banana boat - marigold
 ___ 63. **Butterfly & Fern 7 pc water set - blue - very scarce color, nice matching tumblers, a good set**
 ___ 64. **Butterfly & Fern 7 pc water set - marigold - also very nice**
 ___ 65. **Peacock & Grape 9" spt ftd plate - blue - very scarce color, nice**
 ___ 66. Peacock & Grape 9" spt ftd plate - marigold - nice
 ___ 67. Blackberry Open Edge ruffled basket - amethyst
 ___ 68. Blackberry Open Edge ruffled basket - green
 ___ 69. **Wishbone 9" ftd plate - purple - a super example, scarce**
 ___ 70. Wishbone PCE large bowl - green - very pretty
 ___ 71. Ribbon Tie CRE bowl - amethyst
 ___ 72. **Memphis 8 pc. punch set - marigold - dark & nice, matching**
 ___ 73. Brocaded Acorns console bowl & candlesticks - ice blue
 ___ 74. **Rustic 19" funeral vase - amethyst - super pretty & very rare color**
 ___ 75. **Rustic 19" funeral vase - blue - super, very scarce**
 ___ 76. **Rustic 19" funeral vase - marigold - dark, super**
 ___ 77. Hobstar Band 7 pc. water set - marigold
 ___ 78. **Stag & Holly large size IC shaped ftd bowl - blue - electric & fantastic!**
 ___ 79. Stag & Holly large size IC shaped ftd bowl - marigold - nice
 ___ 80. **Persian Garden chop plate - white - frosty & super, very rare & desirable**
 ___ 81. Raindrops dome ftd ruffled bowl - peach opal
 ___ 82. **Peacocks ruffled bowl w/ribbed back - aqua opal - spectacular, lots of opal, as good as they get!**
 ___ 83. **Peacocks ruffled bowl w/ribbed back -**

- purple - pretty
- ___ 84. Peacocks ruffled bowl w/ribbed back - marigold - also pretty
- ___ 85. Acorn Burrs 7 pc. water set - purple - very nice & very scarce
- ___ 86. Butterfly & Berry 4 pc. table set - marigold
- ___ 87. M'burg Fleur De Lis collar based IC shaped bowl - green - satin
- ___ 88. M'burg Fleur De Lis collar based IC shaped bowl - amethyst - radium & pretty
- ___ 89. M'burg Fleur De Lis collar based IC shaped bowl - marigold - radium & nice
- ___ 90. Acanthus chop plate - marigold
- ___ 91. Peacock & Grape spt ftd ruffled bowl - red - super, a nice example, rare
- ___ 92. Wine & Roses 7 pc. water set - marigold - pitcher is super pretty & scarce
- ___ 93. Dragon & Strawberry collar based round bowl - amethyst - spectacular irid., super, super, super, very few known
- ___ 94. Persian Medallion ruffled bowl - blue
- ___ 95. Blackberry Block 7 pc. water set - blue - extremely rare & desirable, a nice set
- ___ 96. Daisy row boat - marigold - small hit on base
- ___ 97. Grape & Cable fruit bowl - purple
- ___ 98. Horse Medallion 7" plate - marigold
- ___ 99. Captive Rose ruffled bowl - blue
- ___ 100. Grape & Cable banquet size 14 pc. punch set - marigold - dark & super, a highly desirable set!
- ___ 101. Waterlily ftd ruffled sauce - blue
- ___ 102. Fenton's Peacock at Urn 9" plate - blue - scarce & super!!
- ___ 103. Fenton's Peacock at Urn 9" plate - white - frosty & fantastic
- ___ 104. M'burg Zig Zag ruffled bowl - amethyst - radium
- ___ 105. Acorn Burrs 8 pc. punch set - purple - very rare & desirable, super pretty irid.!
- ___ 106. Grapevine Lattice 7" ruffled bowl - white
- ___ 107. Dugan Cherries 3 in 1 edge ftd bowl - purple - spectacular! a "10"
- ___ 108. Fashion 8 pc. punch set - marigold
- ___ 109. Stag & Holly ftd chop plate - marigold - super, as good as we have ever sold, rare
- ___ 110. Dragon & Lotus ruffled bowl - lavender
- ___ 111. Springtime 7 pc. water set - green - very rare, a pretty set
- ___ 112. Octagon ruffled bowl - purple - pretty
- ___ 113. Orange Tree IC shaped bowl - red - cherry & super, very desirable, rare
- ___ 114. Grape Arbor tankard water pitcher - marigold - even from top to bottom
- ___ 115. Leaf Chain 9" plate - blue - super, more rare than people think
- ___ 116. Strawberry 9" plate - purple
- ___ 117. Springtime 4 pc table set - green - very rare set, nice
- ___ 118. Stippled Grape & Cable large ruffled bowl - purple - super & scarce
- ___ 119. Grape & Cable 7 pc water set - purple - fantastic set, as nice as the get
- ___ 120. Grape & Cable 7 pc. water set - marigold - super
- ___ 121. Fishscale & Beads 6" plate - purple - very pretty, scarce
- ___ 122. Acorn IC shaped bowl - red - very scarce & nice
- ___ 123. Two Flowers ftd ruffled bowl - marigold
- ___ 124. Grape & Cable candlesticks - purple - nice
- ___ 125. Broken Arches 8 pc. punch set - marigold - very rare set, more rare than the purple sets
- ___ 126. M'burg Hobnail Swirl rosebowl - amethyst - scarce
- ___ 127. M'burg Hobnail Swirl rosebowl - marigold - scarce, nice
- ___ 128. Enameled Iris tankard water set - amethyst - very rare set, nice
- ___ 129. Engraved Grape tankard lemonade set - marigold - very neat miniature set, very rare for this size
- ___ 130. Diamond Points 11" vase - ice blue - very pretty nice
- ___ 131. Diamond Points 10" vase - green - pretty
- ___ 132. Diamond Points 11" vase - purple - super
- ___ 133. Grape & Cable centerpiece bowl w/points turned in - white - very rare piece of G&C
- ___ 134. Grape & Cable centerpiece bowl w/points turned in - purple - nice
- ___ 135. Poppy Show 9" plate - blue - very rare plate w/outstanding irid., highly desirable
- ___ 136. Poppy Show 9" plate - marigold - also very nice & highly desirable
- ___ 137. Greek Key 7 pc. tankard water set - purple - a super set, very rare & desirable, has outstanding irid.
- ___ 138. Stag & Holly spt ftd IC shaped bowl - green
- ___ 139. N's Bushel Basket - purple
- ___ 140. Imperial Whirling Star punch bowl & b - marigold - super pretty & extremely rare, one of a few known
- ___ 141. U.S. Glass Whirling Star 8 pc. punch set - marigold - much smaller set than Imperial
- ___ 142. Buzz Saw small size cruet

scarce item

- ___ 143. Birds & Cherries bon bon - amethyst
- ___ 144. Dragon & Strawberry ftd ruffled bowl - blue - very rare & desirable, very pretty
- ___ 145. Dragon & Strawberry ftd ruffled bowl - marigold - dark & super, very scarce
- ___ 146. Wild Strawberry 7 pc berry set - purple
- ___ 147. Stippled Grape & Cable 9" plate - blue - very rare & nice, Daryl's favorite piece
- ___ 148. M'burg Seacoast pintray - amethyst - super pretty, has a small nick on back edge
- ___ 149. Vintage 7" plate - green - scarce
- ___ 150. Tree Trunk 17 1/2" funeral vase - purple - very rare & nice, a highly desirable piece
- ___ 151. Target 11" vase - peach opal
- ___ 152. Open Rose 9" plate - amber - very scarce color
- ___ 153. Open Rose 9" plate - green
- ___ 154. Holly ruffled bowl - red - very rare & desirable, a nice piece
- ___ 155. Holly ruffled bowl - green - nick on back edge
- ___ 156. Oriental Poppy 7 pc. water set - purple - super pretty set, as nice as they get
- ___ 157. Oriental Poppy 7 pc. water set - marigold - also very scarce & nice
- ___ 158. Leaf & Beads rosebowl - purple
- ___ 159. Persian Medallion 3 in 1 edge large size bowl - blue
- ___ 160. Maple Leaf 7 pc. water set - marigold - scarce
- ___ 161. Dugan Cherries CRE 6" plate - purple - super
- ___ 162. Panelled Dandelion 7 pc. water set - green - super nice set, rare & desirable
- ___ 163. M'burg Nesting Swan ruffled bowl - amethyst - satin & scarce
- ___ 164. Lattice & Grape 7 pc. tankard water set - marigold - dark from top to bottom
- ___ 165. Beaded Cable rosebowl - aqua opal - a super pastel example
- ___ 166. Tornado small size vase - purple - very pretty, scarce
- ___ 167. Double Scroll candlesticks - red - very rare set, nice
- ___ 168. Scroll Embossed 9" plate - purple - super
- ___ 169. Scroll Embossed 9" plate - green
- ___ 170. Rose Show 9" plate - blue - very scarce & desirable, nice
- ___ 171. Rose Show 9" plate - marigold - has super pastel irid., very scarce & desirable
- ___ 172. Peacock at the Fountain 7 pc. water set - blue - very scarce
- ___ 173. Tree Trunk mid size vase - marigold - super, scarce
- ___ 174. Concord ruffled bowl - green - very pretty, scarce
- ___ 175. Fashion 7 pc. water set - marigold
- ___ 176. Fanciful low ruffled bowl - purple - electric & super
- ___ 177. Dogwood Spray tri-cornered crimped edge dome ftd bowl - purple - electric blue highlights, minor nick on base
- ___ 178. M'burg Hobnail Swirl 10" vase - amethyst - scarce
- ___ 179. Star & File 7 pc. water set - marigold - scarce set
- ___ 180. Stag & Holly 9" spt ftd plate - marigold - not many around, nice
- ___ 181. Grape & Cable large ruffled compote - marigold
- ___ 182. Fenton's Peacock at Urn ruffled bowl - blue
- ___ 183. Heavy Grape 8" plate - amber
- ___ 184. Heavy Grape 8" plate - green
- ___ 185. M'burg Trout & Fly ruffled bowl - green - satin & very nice
- ___ 186. Cobblestone ruffled bowl - purple
- ___ 187. Fenton's Peacock at Urn ruffled compote - blue
- ___ 188. Birds & Cherries card tray shaped bon bon - green
- ___ 189. Grape & Cable 7" handgrip plate - green
- ___ 190. Blossomtime ruffled compote - purple - super nice
- ___ 191. Stork & Rushes 8 pc. punch set - marigold
- ___ 192. M'burg Hanging Cherries 4 pc. table set - marigold - small chip on base of butterdish
- ___ 193. Fisherman's mug - purple
- ___ 194. Little Fishes large ruffled ftd bowl - blue - electric irid., a super bowl
- ___ 195. Butterfly & Berry 7 pc. water set - marigold
- ___ 196. Fanciful 9" plate - blue
- ___ 197. Fanciful IC shaped bowl - white
- ___ 198. Corinth JIP vase - amber
- ___ 199. Corinth JIP vase - green
- ___ 200. M'burg Hobstar & Feather 10 pc. punch set w/Fleur De Lis interior - marigold - radium, extremely rare & desirable, super!
- ___ 201. Bells & Beads tri-cornered crimped edge bowl - peach opal
- ___ 202. Grape & Cable 9" plate w/BW back - green - nice
- ___ 203. Garden Mums handgrip plate w/etching

adv. - amethyst - scarce, in high demand

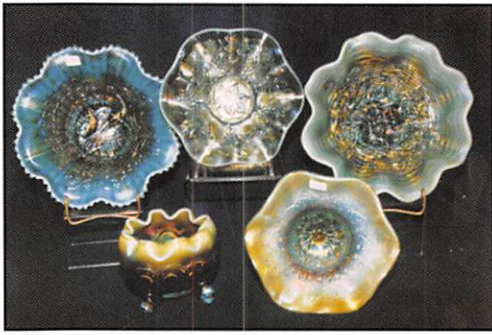
- ___ 204. Bullseye & Beads 7 1/2" vase - purple - super
- ___ 205. M'burg Diamonds 7 pc. water set - amethyst - scarce
- ___ 206. M'burg Hobnail Swirl spittoon - marigold - nice, very rare
- ___ 207. Rustic mid size 16" vase - white
- ___ 208. Rustic mid size 16" vase - blue
- ___ 209. Double Star 7 pc. water set - green - very scarce set
- ___ 210. Heavy Grape chop plate - purple - super fantastic irid., scarce
- ___ 211. Dogwood Spray dome ftd deep ruffled bowl - purple - pretty
- ___ 212. M'burg Whirling Leaves tri-cornered crimped edge bowl - green - radium, very hard to get shape
- ___ 213. Orange Tree 9" plate - blue - scarce, pretty
- ___ 214. Imperial Grape 7 pc. water set - marigold
- ___ 215. Rose Show ruffled bowl - aqua opal - pastel & super, heat check in base, common in Rose Shows
- ___ 216. Persian Garden 6" plate - marigold
- ___ 217. Wishbone ftd ruffled bowl - blue - not a deep one like most blue ones, nice
- ___ 218. Wishbone ftd ruffled bowl - purple
- ___ 219. Round Up 9" plate - peach opal - scarce in a plate
- ___ 220. Case of 23 Carnival irid. buttons
- ___ 221. Case of 30 Carnival irid. buttons
- ___ 222. Case of 42 Carnival irid. buttons
- ___ 223. Dimples & Brilliance hatpin - purple
- ___ 224. Garment ornament - purple
- ___ 225. Carnival purse - dark
- ___ 226. Carnival purse - dark
- ___ 227. Carnival purse - dark
- ___ 228. Carnival purse - dark
- ___ 229. Grape & Cable mid size 10 pc. punch set - purple - very pretty set! harder to find than the other sizes
- ___ 230. Three Fruits dome ftd ruffled bowl - marigold - dark & pretty
- ___ 231. Acorn Burrs 4 pc. table set - purple - rare & desirable, nice set
- ___ 232. Leaf Swirl compote - aqua teal
- ___ 233. Field Flower water pitcher - purple - lavender irid., pretty
- ___ 234. Field Flower tumbler - purple
- ___ 235. Good Luck 9" plate w/BW back - purple - as good as they get, super!
- ___ 236. Fine Cut & Roses rosebowl - purple - feet have been buffed
- ___ 237. Wreathed Cherry 7 pc. water set - marigold - scarce set
- ___ 238. Fenton's Grape & Cable ruffled bowl - red - nice example
- ___ 239. M'burg Hanging Cherries 7" plate - green - satin & desirable, has heat check in base, only few known
- ___ 240. M'burg Holly Whirl ruffled bowl - green - satin
- ___ 241. Memphis 8 pc. fruit bowl set - purple - pretty, small nick on base
- ___ 242. Persian Garden 6" plate - white - nice
- ___ 243. Vintage 7" ruffled bowl - aqua opal - rare item, not many around
- ___ 244. Diamond Lace water pitcher - purple - super
- ___ 245. Diamond Lace tumblers (6) - purple - choice
- ___ 246. Pillow & Sunburst ruffled bowl - aqua teal
- ___ 247. Dogwood Spray dome ftd ruffled bowl - peach opal
- ___ 248. Grape & Cable master IC bowl - white - frosty & pretty
- ___ 249. Vintage fernery - green - pretty
- ___ 250. Singing Birds 7 pc. water set - green - very desirable, super pretty set
- ___ 251. Rococco vase - marigold
- ___ 252. Captive Rose 9" plate - green - pretty, rare color, a top Fenton plate
- ___ 253. Mikado IC shaped compote - marigold - very dark & pretty
- ___ 254. Apple Tree 7 pc. water set - marigold
- ___ 255. 1910 Detroit Elks ruffled bowl - blue - super pretty & very rare, lettered pcs. are hot!
- ___ 256. Fenton's Peacock at Urn ruffled bowl - marigold - pumpkin dark, fantastic!
- ___ 257. Garland rosebowl - blue - pretty
- ___ 258. Coral ruffled bowl - blue - very scarce, spectacular
- ___ 259. Grape & Cable cologne bottle - marigold
- ___ 260. Open Rose centerpiece bowl - amber - scarce bowl & rare color
- ___ 261. Wishbone & Spades chop plate - purple - very pretty & extremely rare
- ___ 262. Wishbone & Spades 6" plate - purple - also scarce & nice
- ___ 263. Fenton's Grape & Cable fruit bowl w/flared out sides - blue - super, very pretty & rare in this shape
- ___ 264. Grape & Cable spt ftd 9" plate - green
- ___ 265. Orange Tree ftd 7 pc. water set - super pretty, as nice as they get
- ___ 266. Vintage ruffled compote - green
- ___ 267. Little Fishes ftd IC shaped

scarce, super pretty

- ___ 268. Poppy Pickle dish - blue - electric & gorgeous
- ___ **269. Stippled Rays ruffled bowl - red - scarce**
- ___ 270. Thistle ruffled bowl - amethyst
- ___ 271. Nautilus creamer - purple - pretty
- ___ **272. M'burg Peacock whimsey master berry bowl - marigold - radium & pretty, flattened out, very unusual**
- ___ 273. Big Basketweave squatty vase - purple - pretty
- ___ **274. Morning glory 13" vase - purple - super electric irid. on this scarce funeral vase**
- ___ 275. Good Luck PCE bowl - marigold - pretty
- ___ 276. Four Flowers 6" plate - peach opal
- ___ 277. Dugan's Hollow glass blown candlesticks - ice green - stretch
- ___ **278. Milady 7 pc. tankard water set - blue - spectacular & rare, a beautiful set!**
- ___ 279. Pinecone 6" plate - marigold - dark & super
- ___ 280. Star & File 4 piece table set - marigold
- ___ 281. Butterfly & Tulip deep ftd bowl - marigold - a nice one for these
- ___ 282. Ripple 14" vase - amber
- ___ **283. M'burg Seacoast pin dish - green - scarce & desirable, pretty**
- ___ 284. Stork & Rushes hldd basket - marigold - scarce w/handle
- ___ **285. Wishbone epergne - marigold - dark & pretty**
- ___ 286. N's Wide Panel mid size 12" vase - green
- ___ 287. Double Stemmed Rose dome ftd plate - white
- ___ 288. Four Seventy Four 7 pc. water set w/large pitcher - marigold
- ___ 289. Grape & Cable punch cups (4) - marigold - choice
- ___ **290. Heart & Vine 9" plate - blue - scarce, pretty**
- ___ 291. Cathedral Chalice - marigold
- ___ **292. Apple Blossom Twigs 9" plate - purple - scarce & pretty**
- ___ 293. Imperial Grape 7 pc. wine set - purple - super!
- ___ 294. Waffle Block hldd basket - marigold
- ___ **295. Grape & Cable 7 pc. tankard water set - marigold - very rare & desirable, a gorgeous set**
- ___ 296. French Knots 13" vase - amethyst - very pretty
- ___ Acorn Burrs punch cups (2) - purple - choice
- ___ Cottage card tray shaped bon bon - green
- ___ Bayou 5 1/2" squatty vase - marigold

- cute

- ___ **300. Grape Arbor 7 pc. tankard water set - white - frosty & beautiful, not many sets around!**
- ___ 301. Inverted Feather parfait - marigold
- ___ **302. Issac Benesch ruffled bowl - amethyst - scarce**
- ___ 303. Fenton's Flute 9" vase - vaseline
- ___ 304. M'burg Fleur De Lis dome ftd crimped edge bowl - marigold - radium
- ___ 305. Morning Glory 17 1/2" vase - marigold
- ___ 306. Fenton's Thin Rib 16" vases (2) - marigold - choice
- ___ **307. Brooklyn Bridge ruffled bowl - marigold**
- ___ 308. Plume Panels 11 1/2" vase - green - pretty
- ___ **309. Illinois Soldiers & Sailors 7" plate - marigold - stunning, as good as they get**
- ___ 310. N's Thin Rib 10" vase - marigold
- ___ 311. Diamond Rib 11 1/2" vase - amethyst
- ___ 312. Butterfly & Berry 9" vase - marigold
- ___ 313. Interior Rib spittoon vase - marigold
- ___ 314. Stippled Rays ruffled compote - green
- ___ 315. Premium candlesticks - marigold
- ___ 316. Miniature Morning Glory 4 1/2" vase - marigold - cute
- ___ 317. Diamond & Column 11 1/2" vase - green
- ___ 318. Basketweave miniature basket - marigold
- ___ 319. Large Swan - marigold - not old
- ___ 320. Thin Rib 13" vase - ice blue - not old
- ___ 321. Pastel Swan salt - pink - chip on side



Seeck Auctions



Seeck Auctions



Seeck Auctions

P.O. Box 377
Mason City, Iowa 50402



DAMAGED IN HANDLING
IN THE POSTAL SERVICE

