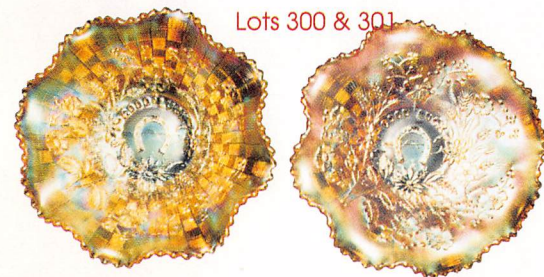




Randy S. Burdette
Auctioneer 927
(304) 445-2897

AUCTION HOTLINE

TOLL FREE
1-800-726-2897



Lots 300 & 301



Lots 240-242



Lots 70-72



Lots 110-111



Lots 100-102



Lots 175-178

10% BUYERS PREMIUM ADDED TO ALL FINAL BID PRICES!

TERMS: Cash, M/C, Visa, American Express, Discover Card, travelers checks, or approved check. WV state sales tax of 6% must be charged unless tax exempt. No out-of-state checks unless accompanied by current bank letter of credit addressed to Riverbend Auction Co. All items sold as is where is without guarantees or warranties. All descriptions subject to error.

Thinking of selling real estate or personal property? Contact the Riverbend Auction team.



RIVERBEND
AUCTION
Co.

P. O. Box 800 • 103 South Monroe Street
Alderson, West Virginia 24910

304-445-2897

1-800-726-2897

Outstanding
CARNIVAL GLASS
Auction

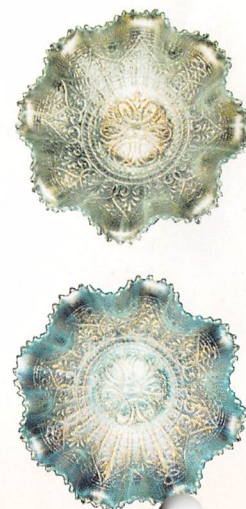
11:00 A.M., Saturday, October 26

First Class
PAID
Permit #3
Alderson, WV
24910

First Class Mail

TO:

LEE MARKLEY
P.O. BOX 306
MENTONE, IN 46539-0306



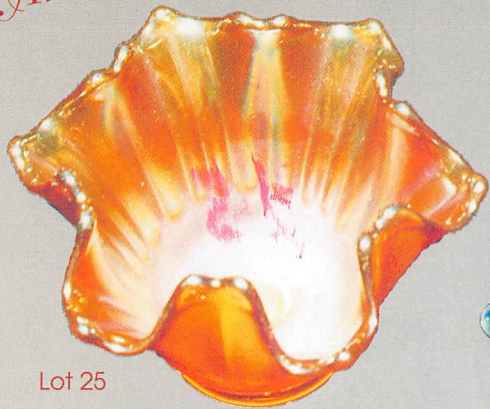
Lots 50 & 51

Time dated information, please rush.

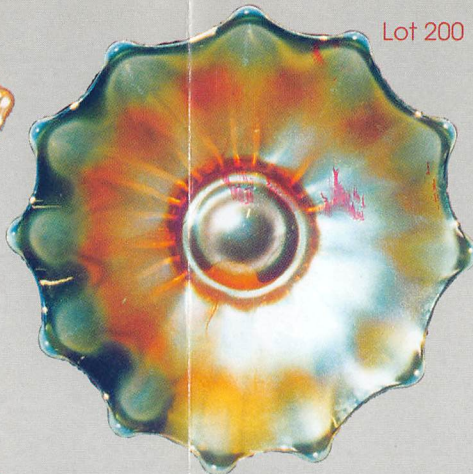
Another Outstanding

Carnival Glass Auction

11:00 A.M., Saturday, October 26



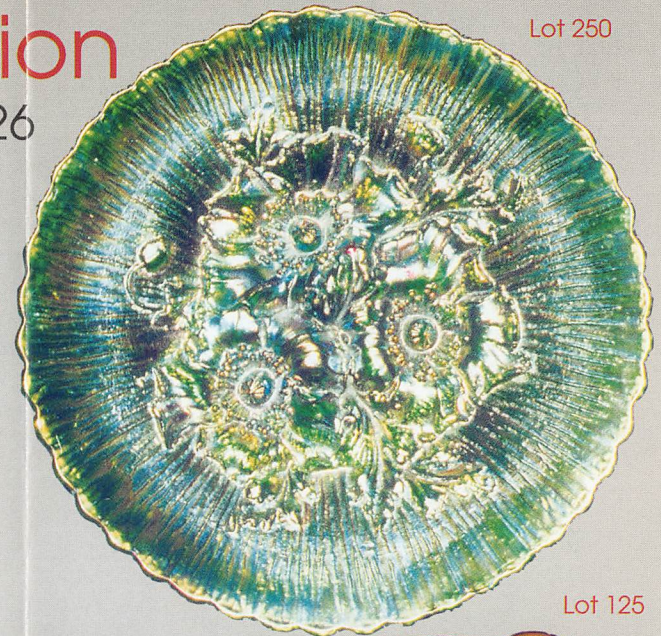
Lot 25



Lot 200



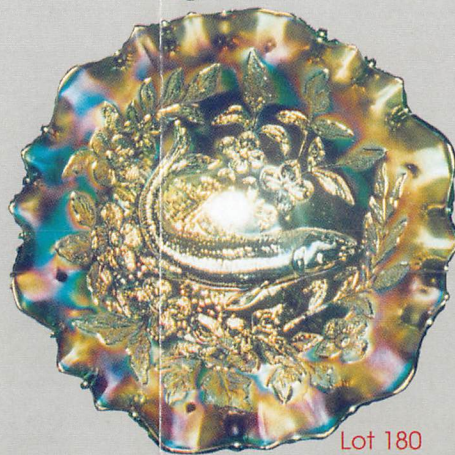
Lot 230



Lot 250



Lot 140



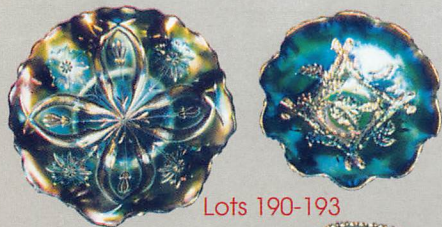
Lot 180



Lot 40



Lot 125



Lots 190-193



Lot 275

Preview: Friday Evening, 6:00 - 9:00 P.M.

Thinking of selling real estate or personal property?

Contact the Riverbend Auction team.

TOLL FREE NATIONWIDE 1-800-726-2897

INSIDE AT Riverbend Auction Center, Alderson, WV,

CARNIVAL GLASS AUCTION

11:00 AM SATURDAY, OCTOBER 26

inside at Riverbend Auction Center
Alderson, West Virginia

Preview: Friday evening 6:00 pm - 9:00 pm

*illustrated items are listed in bold type

Don't miss this auction. Many of these pieces are from a private Ohio collection and were selected pieces with outstanding color!

CAN'T ATTEND THE AUCTION?

Contact us with an absentee or phone bid. 3 day return privilege on all absentee purchases.

- | | | |
|---|---|---|
| ___ 1. (M) Peacock and grape 8" ruffled bowl | ___ 40. (Amy) Millersburg Courthouse IC | ___ 74. (M) Imp. grape goblet (rare) |
| ___ 2. (M) Holly 8 1/2" ruffled bowl | ___ shaped bowl, radium finish, minor | ___ 75. (M) Rococo ruffled bowl |
| ___ 3. (PM) N. 3 fruits medallion 8 3/4" | ___ pinhead nicks on edge | ___ 76. (Amy) Concave flute 8" vase |
| ___ ruffled dome ftd. bowl | ___ 41. (Amy) Persian medallion 7" ruffled | ___ 77. (B) Stippled rays 5 1/2" bowl, chip on |
| ___ 4. (Amy) Vintage 8" tightly crimped edge | ___ bowl (chip) | ___ base |
| ___ 5. (M) Persian medallion 8" IC shaped | ___ 42. (M) (2) Orange tree sherbets, | ___ 78. (M&B) (2) Persian medallion sauce |
| ___ bowl, dark marigold | ___ roughness on bases | ___ bowls (High Bidders Choice) |
| ___ 6. (M) N. grape and cable sugar w/lid, | ___ 43. (G) Rustic 16" vase, open bubble on | ___ 79. (GO) N. blooms and blossoms nappy, |
| ___ nice dark color | ___ point | ___ no design in flowers (not carnival) |
| ___ 7. (M) N. grape and cable sugar w/lid, | ___ 44. (M) Imp. heavy grape master berry | ___ 80. (BO) Lined heart 12" vase (not |
| ___ nice dark color | ___ bowl | ___ carnival) |
| ___ 8. (M) Star medallion milk pitcher | ___ 45. (M) Hobnail soda gold spittoon, | ___ 81. (BO) N. tree stump mug (not carnival) |
| ___ 9. (Smoke) Star medallion milk pitcher | ___ roughness on top | ___ 82. (BO) 3 Fruits meander spatula ftd. |
| ___ w/bowl | ___ 46. (P) Fisherman's mug | ___ ruffled bowl (not carnival) |
| ___ 10. (B) (2) Orange tree punch cups, 1 has | ___ 47. (P) Pair Imp. flute #3 berry bowls, | ___ 83. (BO) Palm and scroll 3 ftd. ruffled |
| ___ minor flake on rim | ___ scarce | ___ bowl, chips on inside of feet (not |
| ___ 11. (AO) N. bushel basket, nice | ___ 48. (B) N. double loop open sugar bowl | ___ carnival) |
| ___ 12. (Amy) Millersburg hanging cherries | ___ 49. (M) Iris buttermilk goblet | ___ 84. (Cust) Grape and cable bon bon (not |
| ___ spooner | ___ 50. (IB) Hearts and flowers 9" ruffled | ___ carnival) |
| ___ 13. (Amy) Millersburg holly bon bon, | ___ bowl | ___ 85. (Cust) Butterfly and berry 9" vase (not |
| ___ pinhead on top | ___ 51. (IG) Hearts and flowers 9" ruffled | ___ carnival) |
| ___ 14. (Amy) Orange tree mug | ___ bowl, points nicked, pale color | ___ 86. (Cust) N. drapery 9" vase (not |
| ___ 15. (M) 2 Flowers spatula ftd. bowl | ___ 52. (M) Imp. heavy grape 11" chop plate, | ___ carnival) |
| ___ 16. (CB) Swan, small heat cracks | ___ nice | ___ 87. (Cust) N. tree trunk 11" vase (not |
| ___ 16a. (BO) Swan | ___ 53. (G) Louisa rosebowl | ___ carnival) |
| ___ 17. (IG) Swan | ___ 54. (M) Mikado stemmed fruit bowl | ___ 88. (WO) Wildrose rosebowl, nick on toe |
| ___ 18. (Odd G) Swan | ___ 55. (Amy) Holly and berry 8" ruffled bowl | ___ (not carnival) |
| ___ 19. (M) Swirl 10" bowl | ___ 56. (M) Cut arcs 3 in 1 edge 8 1/2" bowl | ___ 89. (M) Apple blossom twigs 8 1/2" low |
| ___ 20. (M) Imp. grape 8" bowl | ___ 57. (Amy) Twigs 8 1/2" vase | ___ ruffled bowl |
| ___ 21. (Amy) N. grape and cable tumbler | ___ 58. (Amy) Pebbles 9" plate | ___ 90. (M) Stag and holly 8" spatula ftd. bowl |
| ___ 22. (M) Orange tree mug | ___ 59. (M) (2) Powder dishes, scottie, deer | ___ 91. (Amy) Dragon and lotus 8" 3 in 1 edge |
| ___ 23. (Clear) 1911 Shriners champagne | ___ (High Bidders Choice) | ___ ruffled bowl, chips on edges |
| ___ 24. (M) Holly compote, small flake on rim | ___ 60. (B) Stork and rushes tumbler | ___ 92. (Amy) N. fine cut and roses candy dish |
| ___ 25. (M) Squatty 5" vase/flower arranger, | ___ 61. (Amy) Millersburg holly sprig 7" bowl, | ___ 93. (Amy) N. stippled rays 9" ruffled bowl |
| ___ dark marigold, pattern? | ___ radium finish | ___ 94. (M) Grape and cable cologne bottle, |
| ___ 26. (M) Persian medallion 6" plate | ___ 62. (B) Acorn bowl | ___ no stopper |
| ___ 27. (M) Pair crackle candlesticks | ___ 63. (M) Wreath of roses whimsey rose | ___ 95. (W) Leaf chain 8" IC shaped bowl, |
| ___ 28. (M) Boggy bayou 5 3/4" vase | ___ bowl | ___ pink highlights |
| ___ 29. (B) Vintage fernery | ___ 64. (G) Butterfly and berry master berry | ___ 96. (G) N. rainbow compote |
| ___ 30. (G) Stippled rays 6 1/2" ruffled dome | ___ bowl, very nice | ___ 97. (Smoke) Smooth panels 8" vase, 6" |
| ___ ftd. bowl | ___ 64a. (M) Peach and pear bowl | ___ across the top |
| ___ 31. (M) 5 Hex optic tumblers | ___ 65. (M) Rustic 9" vase w/3 in 1 edge | ___ 98. (G. Vas) Wide panel cov. candy |
| ___ 32. (Odd G) Ripple 9 1/2" vase | ___ 66. (Vas) 12 1/2" stretch glass bowl, really | ___ 99. (M) Dugan basket |
| ___ 33. (M) Double stem rose 8" dome ftd. | ___ nice | ___ 100. (PO) Dugan 6 1/2" JIP vase |
| ___ bowl | ___ 67. (M) (2) Lattice and daisy tumblers | ___ 101. (PO) Pulled loop 11 3/4" vase, chip |
| ___ 34. (M) Swirl vase | ___ 68. (M) Imp. heavy grape master berry | ___ on base |
| ___ 35. (M) Windflower 9" plate | ___ bowl | ___ 102. (PO) Dugan Cornith 5" squatty |
| ___ 36. (B) Orange tree punch bowl top | ___ 69. (M) Wreath of roses rosebowl | ___ vase, 6 1/2" across the top |
| ___ 37. (M) Waterlily and cattails 5" 3 sides up | ___ 70. (Amy) N. strawberry 9" plate, | ___ 103. (M) Stag and holly 10" ftd. bowl |
| ___ bowl | ___ absolutely beautiful iridescence | ___ 104. (Amy) Holly 8" IC shaped bowl |
| ___ 38. (M) Apple blossoms 6" ruffled bowl | ___ 71. (Amy) N. grape and cable 9" plate, | ___ 105. (M) Grape delight nut bowl, chip on |
| ___ 39. (M) Hobstar and arches 8 1/2" ruffled | ___ absolutely beautiful iridescence | ___ toes |
| ___ bowl | ___ 72. (Amy) N. 3 fruits 9" plate, absolutely | ___ 106. (B) Orange tree 3 ftd. fruit bowl |
| | ___ beautiful iridescence, no wear on | ___ 107. (G) Ribbon tie 8" tight crimped bowl |
| | ___ fruit | ___ 108. (B) Fruits and flowers square bon bon, |
| | ___ 73. (Amy) Luster flute ruffled hat | ___ pretty |

- ___ 109. (Amy) Pansy 8 ruffled bowl, beautiful
- ___ 110. (M) Stag and holly 8" IC shaped spatula ftd. bowl, very pretty
- ___ 111. (M) Millersburg nesting swan ruffled 10" bowl, nice satin finish
- ___ 112. (B. Amy) Leaf rays nappy, very pretty with dark amethyst
- ___ 113. (B) Orange tree 8" IC shaped bowl, electric
- ___ 114. (M) Lion 7" ruffled bowl
- ___ 115. (B) Cherry circle large bon bon, very attractive
- ___ 116. (Amy) Imp. grape decanter jug, no stopper, very very electric
- ___ 117. (M) Orange tree loving cup, chip on base
- ___ 118. (Amy) Orange tree loving cup
- ___ 119. (G) Rare grape and cable advertising stippled plate, Old Rose Distilling Wines and Liquors Chicago
- ___ 120. (Amy) N. strawberry 9" plate, beautiful stretch effect
- ___ 121. (G) Inverted feather cracker jar and lid, crack inside of base and chip on top edge
- ___ 122. (Amy) Fisherman's mug
- ___ 123. (Clam) Smooth panels squatty 6" vase
- ___ 124. (Clam) Smooth panels squatty 4" vase
- ___ 125. (M) Millersburg trout and fly square bowl, beautiful example
- ___ 126. (Amy) Millersburg peacock at urn 5" flared bowl, radium - no bee no beads
- ___ 127. (Amy) Rare Horlachers advertising butterflys bon bon, small flake on top and inside
- ___ 128. (Amy) N. grape and cable 9" plate, beautiful stretch effect, small chip on point
- ___ 129. (M) N. tree trunk vt. (ribbed) vase, scarce
- ___ 130. (Smoke) Imp. grape basket, small chip on edge
- ___ 131. (B) Vintage fernery
- ___ 132. (Clam) Columbia 6" vase
- ___ 133. (Teal) Imp. grape 7" deep round bowl, scarce color
- ___ 134. (M) N. grape and cable berry bowl
- ___ 135. (M) Ovals and rounds 10 1/2" chop plate
- ___ 136. (M) Grape and cable 7" 3 ftd. bowl, beautiful color
- ___ 137. (M) N. grape and cable ruffled hat
- ___ 138. (Amy) Millersburg grape wreath multi star 8" 3 in 1 edge bowl, radium
- ___ 139. (M) Stag and holly 10 1/2" 3 ftd. bowl
- ___ 140. (M) Peacock at urn 9" ruffled bowl
- ___ 141. (M) N. singing birds mug, pretty
- ___ 142. (W) Smooth panels 3" JIP vase, 6 1/2" across the top!
- ___ 143. (G) Pine cone 7" ruffled bowl
- ___ 144. (G) N. thin rib 10" vase, thousands of tiny bubbles in glass
- ___ 145. (Citrine) N. thin and wide rib 10 1/2" vase
- ___ 146. (W) Orange tree 9" ruffled bowl, pink highlights
- ___ 147. (G) Millersburg whirling leaves ruffled bowl, radium
- ___ 148. (B) Peacock and grape IC shaped bowl
- ___ 149. (G) Millersburg holly sprig bon bon, radium
- ___ 150. (Amy) Millersburg peacock at urn 10" IC shaped bowl
- ___ 151. (B) Cherry chain bon bon, electric irid.
- ___ 152. (B) Roundup low ruffled 8 1/2" bowl, chip on point
- ___ 153. (Amy) N. rustic 10" vase
- ___ 154. (G) N. rustic 10 3/4" vase
- ___ 155. (B) Orange tree large size mug
- ___ 156. (C. Blue) #314 Fenton candlesticks
- ___ 157. (C. Blue) 8" Stretch plate
- ___ 158. (G) (3) Millersburg diamonds tumblers, 1 has chips on side
- ___ 159. (M) Stag and holly 10" 3 ftd. bowl
- ___ 160. (B) Autumn acorns IC shaped 7 1/2" bowl
- ___ 161. (M) N. grape and cable ruffled bon bon, dark marigold
- ___ 162. (G) N. grape and cable 7 1/2" ruffled bowl, scarce size
- ___ 163. (B) Pine cone 12 sided 6" plate
- ___ 164. (M) Ripple 6" vase
- ___ 165. (P) Lustre rose spooner, gorgeous ele. color, cracked
- ___ 166. (B) Miniature blackberry compote, small flake on base
- ___ 167. (Amy) Beaded bull's-eye 13" vase, outstanding color
- ___ 168. (M) Blossomtime compote, beautiful
- ___ 169. (W) Seafoam ruffled compote
- ___ 170. (M) N. tree trunk 10 1/4" vase
- ___ 171. (B) Grape and cable ftd. fruit bowl, very nice
- ___ 172. (Amy) Scroll embossed compote
- ___ 173. (M) Horses head 7" ruffled bowl, small nick on edge
- ___ 174. (Lime G) Coin spot compote, rare & unlisted, 1st known?
- ___ 175. (G) Millersburg whirling leaves 10" ruffled bowl, radium finish
- ___ 176. (G) Ten mums 10 1/4" ruffled bowl, outstanding iridescence and color!
- ___ 177. (G) N. fruits and flowers 10" ruffled bowl, great color, 4 cherries
- ___ 178. (G) N. grape and cable 9 3/4" ruffled bowl, nice color
- ___ 179. (M) Millersburg holly sprig 9" ruffled bowl, radium
- ___ 180. (G) Millersburg trout and fly ruffled bowl, satin finish and pretty, but has large crack
- ___ 181. (B) Thistle banana boat, very nice
- ___ 182. (M) N. fruits and flowers 9 1/2" ruffled bowl, gorgeous
- ___ 183. (M) Chrysanthemum 10 1/2" ruffled ftd. bowl, very nice
- ___ 184. (G) Millersburg primrose 10" ruffled bowl
- ___ 185. (Amy) N. grape and cable 8 1/2" eight ruffled bowl, pretty
- ___ 186. (Lime G/Vas) Blackberry spray ruffled hat, flake on base (glows under black light)
- ___ 187. (M) Wishbone 8" ruffled bowl
- ___ 188. (Amy) N. wild strawberry 7" handgrip plate
- ___ 189. (M) Orange tree 8" IC shaped bowl
- ___ 190. (P) Dugan four flower vt. 10 1/2" ruffled bowl, nice color, chips on base and nick on edge
- ___ 191. (P) Apple blossom twigs 8 1/2" ruffled bowl, super ele. irid. open bubble on ruffle
- ___ 192. (B) Orange tree IC shaped 8" bowl, electric and golden highlights
- ___ 193. (P) N. grape and cable 10" IC shaped ftd. bowl, very nice
- ___ 194. (Amber) Imp. grape pitcher and one tumbler
- ___ 195. (Amy) Millersburg holly sprig bon bon
- ___ 196. (M) Stag and holly 10" IC shaped ftd. bowl, very nice (glows under black light)
- ___ 197. (M) Butterfly and fern tumbler
- ___ 198. (M) Millersburg diamonds tumbler, radium
- ___ 199. (B) Butterfly and berry tumbler
- ___ 200. (PO) rare Dugan Cornith 8 1/2" plate, opal from base to tips on underside (Unlisted)
- ___ 201. (Clam) Scroll embossed large compote, outstanding
- ___ 202. (Citrine) Thin rib? 11 1/2" vase
- ___ 203. (M) Wide panel 7" vase 6" across top
- ___ 204. (M) Long thumbprint 9 1/2" vase
- ___ 205. (Clam) Wide panel 8" vase
- ___ 206. (B) 12" vase 2 minor pinheads at top
- ___ 207. (M) Woodpecker vase, chip on top
- ___ 208. (M) N. thin rib 9" vase, chip on base
- ___ 209. (M) N. thin rib vt. 6" squatty vase
- ___ 210. (M) Rustic 11" vase
- ___ 211. (Velva Rose) Dolphins 6" fan vase, satin finish
- ___ 212. (B) Fentonia fruit 5" ftd. bowl, scarce pattern and shape
- ___ 213. (Vas) Fine rib 10" vase, scarce color, chip on base (glows under black light)
- ___ 214. (Amy) Fine rib 9" vase, another scarce color, small chip on rib
- ___ 215. (Amy) Chrysanthemum 10" ftd. ruffled bowl, beautiful
- ___ 216. (Amy) Holly 3 in 1 edge bowl
- ___ 217. (G) Millersburg rays and ribbons low ruffled bowl, chips on top edge
- ___ 218. (M) Orange tree rose bowl, nick on toe
- ___ 219. (G) Autumn acorns 8" ruffled bowl
- ___ 220. (Amy) Question marks bon bon
- ___ 221. (M) Acorn ruffled bowl
- ___ 222. (Amy) Diamond and rib 11" vase
- ___ 223. (M) Plume panels 11 1/4" vase
- ___ 224. (P) Scroll embossed large ruffled compote
- ___ 225. (P) Imp. grape water bottle absolutely beautiful, pinhead on grape
- ___ 226. (Amy) Holly 9" ruffled bowl, good color
- ___ 227. (Amber) Lustre rose 10" bowl
- ___ 228. (M) Lustre rose 8" bowl
- ___ 229. (G) Grape and cable orange bowl, beautiful
- ___ 230. (PO) Very rare Dugan vineyard pitcher only 5 or 6 known, heat checks in base and near handle
- ___ 231. (PM) (3) Vineyard tumblers, scarce color, 1 has base flakes, nice pink/blue irid. (tumblers purchased at estate sale w/above pitcher)
- ___ 232. (M) Beaded bull's-eye 7 3/4" vase
- ___ 233. (B) Butterfly and berry 9" vase, peeling on top
- ___ 234. (M) Ripple 8" vase
- ___ 235. (M) Morning glory 6 1/2" vase
- ___ 236. (M) Wild blackberry 9" ruffled bowl
- ___ 237. (M) Millersburg blackberry wreath 7" IC shaped bowl
- ___ 238. (B. Amy) Grape and cable 7" ruffled bowl, pretty, nick on bottom of base
- ___ 239. (Amy) Vintage 3 in 1 edge 9 1/2" bowl
- ___ 240. (P) Holly 7 1/2" ruffled bowl, electric irid. and gorgeous
- ___ 241. (P) N. 3 fruits medallion ruffled spatula ftd. bowl, electric and gorgeous, no wear on fruit
- ___ 242. (Amy) Imp. heavy grape ruffled bowl, electric, electric, electric!
- ___ 243. (W) Fenton peacock at urn 8 1/2" ruffled bowl, pink highlights
- ___ 244. (Amy) Thistle 8 1/2" ruffled bowl
- ___ 245. (M) Large smooth panels 10" vase, 7" across the top

246. (Amy) Diamond and rib 9 3/4" vase
 247. (Amy) Coin dot 9" ruffled bowl
 248. (M) Chesterfield champagne, Imp. Iron Cross on bottom
 249. (M) Butterfly and berry 8 1/2" vase, nicks on base
 250. (G) Rare 9" poppy show plate, electric green and beautiful, 1/4" heat crack in collar
 251. (M) N. wide panel 12" vase, small flake on top
 252. (W) Orange tree rosebowl, chip on foot
 253. (Clear) Twisted stem irid. candlestick
 254. (Russet) N. ? candlesticks, damaged
 255. (Vas) Pair of stretch twist candlestick
 256. (M) Vintage 8" ruffled bowl
 257. (M) N. wildrose open edge bowl
 258. (M) 2 Pinwheel swirl compotes (High Bidders Choice)
 259. (M) N. strawberry 8" ruffled bowl, pretty
 260. (CB) Florentine candlestick
 261. (PO) Pair of drapery lamp shades
 262. (M) Blackberry spray ruffled hat
 263. (P) Imp. jewels vase, Iron Cross mark on base
 264. (M) Millersburg blackberry wreath 8" IC shaped bowl, very pretty
 265. (G) N. strawberry 9" ruffled bowl, outstanding pink and green irid.
 266. (M) Beaded bulls-eye 12" vase
 267. (M) Millersburg ribbons and rays 9" bowl
 268. (M) Cambridge inverted feather jelly compote
 269. (M) Unknown maker ruffled vase in metal rack
 270. (Amy) Heart and vine 9" ruffled bowl
 271. (G) Rare Cambridge inverted feather whimsy bon bon made from cracker jar, 1 of 2 known examples, chip on base
 272. (M) Tiger lily water pitcher w/one tumbler
 273. (P) 5 Diamond lace tumblers beautiful electric color and well matched set
 274. (M) Ruffled hat
 275. (M) Fenton peacock at urn 9 1/4" plate super color, must be one of the best!
 276. (B) Iris compote
 277. (M) Iris ruffled compote
 278. (M) Rare hobstar flower ruffled compote
 279. (G) N. strawberry PCE bowl, very nice
 280. (P) Imp. grape punch cup, super electric color, chip on fruit
 281. (B) Little flowers 10" ruffled bowl
 282. (M) Iris ruffled compote
 283. (P) (2) tiger lily tumblers, super electric color, one has chip on base
 284. (B) Acorns ruffled bowl
 285. (M) Lustre rose creamer
 286. (Amy) Ten mums 10" bowl, beautiful golden iridescence
 287. (G) Scroll embossed plate
 288. (G) Rare N. swirl 4 pc. water set, tumblers are signed, pitcher has crack in base
 289. (Amy) N. grape and cable spooner
 290. (PO) (3) Petal and fan berry bowls
 291. (P) Large grape and cable punch bowl base, has large chip
 292. (M) Acorn bowl (glows under black light)
 293. (Clam) Waffleblock 11 1/2" bowl, unlisted size, nice
 294. (M) Aramis tumbler
 295. (M) Peacock at urn 10" ruffled "mystery bowl", w/bee, no beads
 296. (Amy) Dragon and lotus 8" 3 in 1 edge bowl
 297. (M) Peacock at urn ruffled 9" "mystery bowl", w/bee, no beads
 298. (M) Eagle coin bank
 299. (P) (2) N. daisy and plume compotes (High Bidders Choice)
 300. (M) N. Good Luck bowl, nice dark marigold
 301. (M) Good Luck bowl, nice medium marigold
 302. (IG) Pair of candleholders 1 3/4" tall, stain frosted finish (not carnival)
 303. (M) 10" Handled plate, unknown pattern, handcut butterfly and laurel sprays
 304. (B) Vintage fernery, nice purple/gold iridescence
 305. (M) N. feathers 8" vase
 306. (Amy) Fine cut and roses ruffled candy bowl
 307. (M) N. graceful 6" vase
 308. (M) N. graceful vt. 6" vase, scarce
 309. (M) Grapevine lattice 5 pc. tankard water set, very nice
 310. (Amy) N. grape and cable small breakfast sugar, excellent iridescence
 311. (M) Souvenir loving cup/toothpick, ruby flash etched "Souvenir of Cedar Rapids"
 312. (M) Kittens ruffled bowl, nice dark color
 313. (M) Fine cut and roses ruffled candy dish
 314. (G) Millersburg primrose 9 1/2" ruffled bowl, small nick on top
 315. (Amy) N. grape and cable sweetmeat w/lid, couple of smoothed spots
 316. (M) Butterfly and berry 9" vase
 317. (G) N. grape and cable 8 1/2" PCE bowl
 318. (B) Orange tree orange bowl, absolutely beautiful
 319. (G) N. graceful vt. 6" vase, scarce
 320. (M) Devilbiss small perfume atomizer, 2" tall w/paper label, original atomizer
 321. (M) Fenton peacock at urn 9" ruffled bowl
 322. (M) Golden Wedding Whiskey quart bottle
 323. (M) Autumn acorns 9" ruffled bowl
 324. (CB) Open edge basket, small chip
 325. (M) Small thumbprint miniature souvenir creamer etched "Souvenir of Akron, OH"
 326. (M) (2) Stork and rushes mugs, one paneled variant (High Bidders Choice)
 327. (M) (2) Orange tree mugs, (High Bidders Choice)
 328. (B) Peacock tail ruffled hat
 329. (B) Fine rib and diamond CRE flared top vase
 330. (Teal) Louisa nut bowl
 331. (P) Dugan jack in the pulpit one side up, one side down, pretty
 332. (P) Fanciful ruffled plate, nice
 333. (M) Polo ashtray
 334. (Russet) Florentine candlesticks, nice set
 335. (M) N. drapery vt. 9" vase, dark
 336. (M) Fine rib 10" vase
 337. (B) Waterlily and cattails ftd. sauce
 338. (G) N. thin rib 7" vase
 339. (B) Pine cone IC shaped bowl, good detail
 340. (G) Windmill milk pitcher
 341. (M) Sailboats sauce, dark
 342. (B) Ribbon tie 3 in 1 edge bowl, good color
 343. (M) Stag and holly 10" ftd. IC shaped bowl, fantastic
 344. (Celest) Open edge JIP hat, rare color
 345. (Amy) April showers 10" vase
 346. (M) Dugan wide panel 7" vase, nice shape
 347. (M) Fostoria oil lamp, rare, but has a chip
 348. (P) N. tree trunk mid size vase
 349. (B) (3) N. Peacock at urn stippled IC shaped bowls (High Bidders Choice)
 350. (P) N. peacock at urn IC shaped bowl
 351. (R) Swan, Amberina
 352. (IG) Swan
 353. (G) Millersburg holly sprig deep ruffled sauce, radium
 354. (Amy) Millersburg multi-fruits punch cup
 355. (Amy) N. blackberry compote
 356. (Smoke) Lustre rose sauce, good color
 357. (M) Hobstar cov. sugar jar
 358. (M) Little flowers 10" ruffled bowl, beautiful
 359. (G) Lustre rose fernery, nick on rose
 360. (B) Vintage compote
 361. (P) N. singing birds mug, pretty
 362. (M) IC Lustre rose breakfast set
 363. (M) Garland rosebowl
 364. (P) Acanthus deep 7" bowl, beautiful
 365. (W) N. hearts and flowers ruffled bowl, nice
 366. (G) Vintage single lily epergne' nice
 367. (M) Lustre rose fernery
 368. (B) Orange tree IC shaped bowl, pretty
 369. (B) Double stem rose dome ftd. bowl
 370. (P) Smooth rib salt and pepper shakers
 371. (G) Smooth rays 3 in 1 edge bowl
 372. (G) N. lustre flute breakfast set
 373. (M) Octagon cruet, nice
 374. (M) Sawtooth prisms jelly jar
 375. (M) Grape and cable orange bowl w/Persian medallion interior
 376. (M) Swirled rays IC shaped bowl
 377. (PO) Raindrops 9" dome ftd. bowl
 378. (PO) Leaf ray ruffled nappy w/Daisy Mae ext., small flake on top
 379. (PO) Single flower framed tri-shaped crimped bowl
 380. (PO) Fan gravy boat
 381. (PO) Starfish bon bon
 382. (PO) Low ruffled bowl, nicks on top edge
 383. (PO) Dragon and lotus spatula ftd. bowl, chips on feet
 384. (PO) Ski star 10" deep ruffled bowl
 385. (PO) Ski star pinched in banana boat, nick on base
 386. (M) Imp. grape 10" bowl, nicks on grapes
 387. (M) Thistle and thorn ruffled bowl
 388. (M) Star medallion bowl, nick on edge
 389. (M) Coin dot 9 1/2" ruffled bowl
 390. (M) File 8" ruffled bowl
 391. (M) Waterlily and cattail ruffled sauce
 392. (P) Heavy grape 6" ruffled bowl, electric and outstanding
 393. (P) Pansy ruffled pickle dish, electric and probably as pretty as they come

- ___ 394. (M) Florentine candlesticks, one cracked
- ___ 395. (P) Morning glory 7 1/4" vase, electric
- ___ 396. (P) Morning glory 7 3/4" vase, electric
- ___ 397. (G) 3 Wreath of roses punch cups
- ___ 398. (B) 5 1/2" Unknown pattern vase, top has 4 sides up and measures 4 1/2" across the top, pretty
- ___ 399. (Teal) Scroll embossed 7" bowl
- ___ 400. (G) Millersburg primrose 9" ruffled bowl
- ___ 401. (P) Fine cut and rose rosebowl
- ___ 402. (M) wide panel covered candy bowl
- ___ 403. (M) apple covered candy dish
- ___ 404. (M) Cherry intaglio 9 3/4" bowl
- ___ 405. (G) Long thumbprint 9" vase, small nicks on top
- ___ 406. (B. Amy) Dugan many ribs? 7 3/4" vase, beautiful Tiffany type color
- ___ 407. (Amy) Millersburg whirling leaves 10" ruffled bowl, chip on edge, nicks
- ___ 408. (M) Stippled acorns covered candy dish
- ___ 409. (P) 3 Fruits medallion 9" dome ftd. ruffled bowl, chip inside of foot
- ___ 410. (Amy) N. strawberry 9" plate, beautiful golden iridescence, must be one of the best
- ___ 411. (Amy) 3 Fruits medallion 8 1/2" dome ftd. bowl
- ___ 412. (M) Wide panel punch cup
- ___ 413. (Clear) 1911 Shriners champagne
- ___ 414. (M) Crab claw tumbler
- ___ 415. (M) Orange tree punch base, rim bruise

- ___ 416. (B) Orange tree mug, lacks irid.
- ___ 417. (M) Vintage banded mug
- ___ 418. (Amy) Vintage wine
- ___ 419. (M) Pineapple 4 1/2" creamer
- ___ 420. (PM) Washboard punch cup, unlisted
- ___ 421. (M) Interior rib small mug
- ___ 422. (Amy) N. grape and cable cup
- All of the following items are contemporary**
- ___ 423. (W) Dahlia 5 pc. water set
- ___ 424. (Amberina) Geometric pattern bowl
- ___ 425. (Amberina) Geometric pattern bowl
- ___ 426. (P) Fenton orange tree rosebowl
- ___ 427. (B) IG 1970 plate #1 Twelve Days of Christmas
- ___ 428. (R) IG America the Beautiful 1969 US Capitol, small nicks on edge
- ___ 429. (R) Farm yard spittoon
- ___ 430. (W) Boyd's special 6 pc. train set in original box
- ___ 431. (2) Robert Henry 1981 Bimbah elephants, one white, one amberina, (High Bidders Choice)
- ___ 432. (Pink) Fenton jumping fish
- ___ 433. (B) Joe St. Clair Bi-Centennial toothpick
- ___ 434. (P) New "In God and Home" water pitcher
- ___ 435. (Amber) IG lustre rose chop plate, chip on rose
- ___ 436. (Amy) Fenton Garden of Paradise plate, small nick on base
- ___ 437. (Amy) Fenton 1969 Presznick's grape and cable covered humidior
- ___ 438. (Amy) Fenton 1972 No. 3 Jamestown, VA settlers plate, village blacksmith

- ___ 439. (P) Fenton Bi-Centennial 1776 heritage plate
- ___ 440. (P) Large Fenton owl
- ___ 441. (G) Fenton plate #2 1971 Twelve Days of Christmas
- ___ 442. (G) CRE top pitcher
- ___ 443. (R) ACGA 1996 souvenir inverted strawberry creamer
- ___ 444. (M) IG grape salt and pepper shakers
- ___ 445. (M) IG octagon vase
- ___ 446. (CB) Fenton double dolphins fan vase, hand painted by Jackson
- ___ 447. (W) IG Large ruffled bowl
- ___ 448. (B. Amy) Fruit and flowers round bon bon
- ___ 449. (M) IG ruffled top water jug
- ___ 450. (P) New inverted strawberry bell
- ___ 451. (M) IG hobstar covered sugar
- ___ 452. (M) IG 474 large mug
- ___ 453. (G) 1983 Akron, OH Police Olympics mug
- ___ 454. (G) Singing birds tumbler
- ___ 455. (P) Beautiful art glass overlay vase
- ___ 456. (B) IG octagon compote
- ___ 457. (G) IG grape 7 pc. water set, nice
- ___ 458. (W) IG grape milk pitcher
- ___ 459. (M) IG loganberry vase

RIVERBEND AUCTION COMPANY

Terms ...

**10% BUYER'S PREMIUM WILL BE ADDED
TO ALL BID PRICES.**

Cash, Visa, MasterCard, American Express, Discover Card, Travelers Check or approved check. West Virginia state sales tax of 6% must be charged unless tax exempt. No out of state checks unless pre-approved or accompanied by a current bank letter of credit address to Riverbend Auction Company. All items sold as is, where is without guarantees or warranties. All descriptions subject to error.

Absentee Bid Terms ...

1. Absentee Bids accepted and bid competitively. Absentee purchases have a 3 day return privilege.
2. 20% deposit or approved credit card required on all absentee bids.
3. We are not liable for late or "missed" absentee bids.
4. Absentee bids may be made by mail, fax or by telephone. Deadline is Friday, October 25.

5. Items are in perfect condition w/ average or above average iridescence or so listed in catalog. Bids will not be carried out when damage has been discovered late.

6. We will attempt to notify successful bidders within 72 hours of the auction. We do not contact you if your bids are not successful.

7. We will not accepted ALTERNATE BIDS! For instance, if not successful on item #1, they try for item #5.

8. Absentee purchases over \$500.00 will be shipped and insured for free (standard shipping). Purchases less than \$500.00 are responsible for actual shipping and insurance costs.

9. Payment must be made before any items will be shipped. Allow 2-3 weeks for delivery as nothing is shipped until check is cleared.

10. Fax and phone bids may be placed by calling (304) 445-2900 FAX or 1-800-726-2897.

Directions ...

Only 20 miles from historic Lewisburg, West Virginia, take I-64 West to Exit 161 onto Route 12 South 11 miles to Alderson. From Valley of Virginia, take I-81 South to I-64 West (1:45 from Lexington, Virginia) to Exit 161. From Charleston, West Virginia (2 hours) I-64 East to Exit 161. From Charlotte, North Carolina (4 hours) I-77 North to Princeton, West Virginia Exit take US 460 east to Rich Creek, Virginia to US 219 North to Peterstown, West Virginia. Take Route 12 North to Alderson (Approximately 30 miles).

Motel Information ...

Riverbend Motel, Alderson (304) 445-2550
Brier Inn, Lewisburg (304) 645-7722

Inspection ...

Friday evening as 6:00 am - 9:00 pm

Saturday morning
doors open at 8:00 am