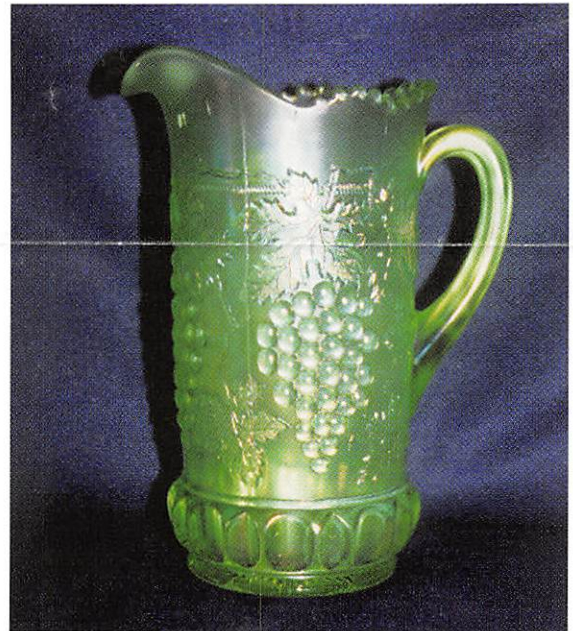
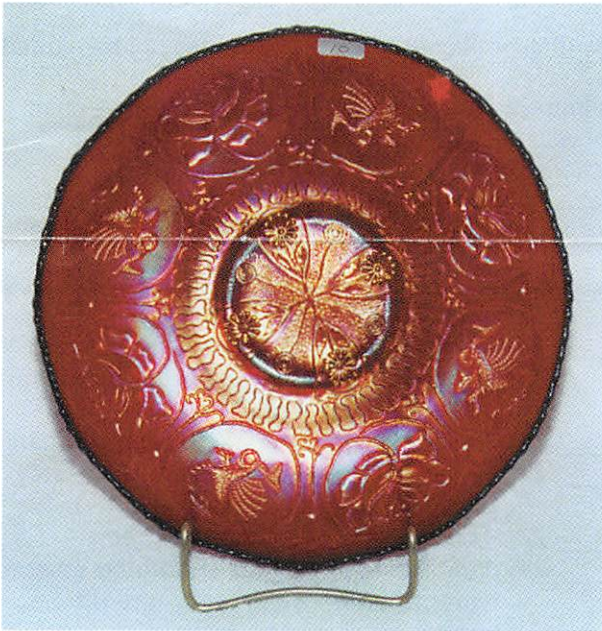


**Air Capital
Carnival Glass Club Convention**

AUCTION

Saturday, October 19, 1996 – 10:00 A.M.



**Holiday Inn
5500 West Kellogg
Wichita, Kansas**

Call (800) 255-6484 for reservations

Saturday, October 19, 1996 -- 10:00 A.M. Holiday Inn -- 5500 West Kellogg, Wichita, Kansas

The Air Capital Carnival Glass Club Convention Auction

Seeck Auctions is pleased to head south to Wichita for the Air Capital Carnival Glass Club Convention this fall. We have a nice selection of glass to auction from various collectors. If you have never attended the Air Capital Convention before - you should! It is a great convention and always lots of fun. Hope to see some new faces.

Air Capital Convention Information: Contact Donald Kime at 316-733-8424.

Preview: Friday - 7:00 pm and Saturday - 8:00 am.

Terms: Cash. Checks accepted with proper I.D.

WRITE-IN BID POLICY

1. Write-in bids will be accepted by sending the numbers of the item(s) desired and the amount bid on each to:
Seeck Auctions, PO Box 377, Mason City, Iowa 50402.
2. If known by Auction Company, bids may be done over the telephone. (515)424-1116.
3. There is a \$5 handling charge for each successful bid. Shipping and insurance charges are additional.
4. Bidders will be notified by a phone call if their bid(s) are successful. This call will be made 1 - 3 days after the auction is over.
5. Please have all bids in by Wednesday, October 16th. All bids (by mail or phone) after this date may not be carried out.
6. If you do not receive an item that sold for less than your bid, assume we cancelled your bid because the piece of glass had below average color, manufacture problem, damage or was not listed correctly.
7. To receive price lists send: \$20 -- for this auction and next 7 auctions
\$5 -- for only this auction or individual auction (please specify)

Send to the above address.

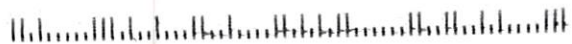
- | | |
|--|--|
| <ul style="list-style-type: none"> ___ 1. Rustic 14" vase - marigold ___ 2. Fine Rib 12" vase - marigold ___ 3. Fine Rib 12" vase - amber ___ 4. Swan salt - celest blue ___ 5. Swan salt - pink ___ 6. Swan salt - ice green ___ 7. Tulip & Cane ruffled compote - marigold ___ 8. Florentine large size candlesticks - ice green ___ 9. Holly ruffled hatshape - green ___ 10. Dragon & Lotus IC shaped bowl - red -
spectacular, cherry red color w/super red
irid., what everyone is looking for in a
piece of red glass ___ 11. Dragon & Lotuc IC shaped bowl - amber - very
nice example ___ 12. Little Flowers deep round bowl - amethyst -
pretty ___ 13. Star & Shield water pitcher - marigold -
rare, foreign ___ 14. Star & Shield tumblers (3) - marigold - rare,
choice ___ 15. Fenton's Grape & Cable 7" IC shaped bowl -
aqua ___ 16. Cosmos & Cane 7pc. berry set - honey amber -
neat set ___ 17. Lucile water pitcher - blue - very rare
pitcher, named after Lucile Britt ___ 18. Lucile tumblers (2) - blue - rare, choice ___ 19. M'burg Holly Whirl tr-cornered single hdd
nappy - amethyst - radium & super | <ul style="list-style-type: none"> ___ 20. Apple Blossom Twigs Variant 9" plate
w/smooth edge - purple - extremely rare
plate & super! ___ 21. Perfume & atomizer in original box - marigold ___ 22. Vineyard 6 pc. water set - purple - very
pretty set, extremely rare ___ 23. Ribbon Tie IC shaped bowl - green ___ 24. Wide Panelled Thistle triangular shaped
water pitcher - blue - very rare pitcher,
neat! ___ 25. Wide Panelled Thistle tumblers (2) - blue -
rare, choice ___ 26. Pansy pickle dish - amber ___ 27. Apple Blossom Twigs IC shaped bowl -
marigold ___ 28. Grape & Cable fruit bowl - purple - nice ___ 29. M'burg Holly Whirl 8" crimped edge bowl -
green - radium & super ___ 30. Mayan IC shaped bowl - green - radium &
pretty ___ 31. Dugan Vintage dome ftd ruffled bowl -
amethyst - super pretty ___ 32. Stag & Holly 9" spt ftd plate - marigold -
nice plate, very rare ___ 33. Imperial Grape wine decanter - smoke - scarce
color ___ 34. Imperial Grape wine decanter - purple - super
pretty ___ 35. Fashion water pitcher - smoke - very rare
but has chip in pattern |
|--|--|

- ___ 36. Fashion tumbler - smoke - scarce
- ___ 37. Dugan's Heavy Grape large ruffled bowl - peach opal - much more rare than the purple ones, nice
- ___ 38. Astors 12" chop plate - marigold - pretty & rare
- ___ 39. Estate mug - marigold
- ___ 40. N's Town Pump - purple - nice
- ___ 41. Poinsettia milk pitcher - marigold - nice
- ___ 42. Grape & Cable 7pc. water set - green - very pretty set, one tumbler has damage, you can replace it later in the auction
- ___ 43. Grape & Cable water pitcher - marigold - a dark example & pretty
- ___ 44. Tiger Lily Variant tumblers (2) - blue - very scarce
- ___ 45. N's Eight sided bushel basket - white
- ___ 46. N's Eight sided bushel basket - marigold
- ___ 47. Beaded Shell mug - blue - scarce color
- ___ 48. Fishscale & Beads 7" plate - white - pretty
- ___ 49. Knotted Beads CRE 9" vase - marigold
- ___ 50. Grape & Cable tankard water pitcher - ice green - a super rarity, with great color, a top piece in carnival glass, fantastic
- ___ 51. Beaded Basket - lime green - scarce color
- ___ 52. Beaded Basket - blue - also scarce color
- ___ 53. Western Thistle large bulbous water pitcher - blue - first one I've seen, a very unique, and pretty water pitcher
- ___ 54. Western Thistle tumblers (3) - blue - also very scarce tumblers
- ___ 55. Chrysanthemum collar based ruffled bowl - green
- ___ 56. Herringbone & Beaded Ovals ruffled compote - marigold
- ___ 57. Vintage large ruffled bowl - blue
- ___ 58. M'burg Peacock at Urn large IC shaped bowl - green - satin & extremely rare in green
- ___ 59. M'burg Peacock at Urn large IC shaped bowl - amethyst - satin & super
- ___ 60. Stag & Holly large IC shaped bowl - electric blue - spectacular, a great bowl
- ___ 61. Grape & Cable butterdish - marigold - pretty
- ___ 62. Grape & Cable creamer - marigold - pretty
- ___ 63. Grape & Cable spooner - marigold - pretty
- ___ 64. Floral & Optic ftd rosebowl - marigold on milkglass
- ___ 65. Butterfly & Berry 9" vase - blue
- ___ 66. Butterfly & Berry 7 1/2" vase - green
- ___ 67. Vintage 7" plate - green - nice
- ___ 68. Vintage 7" plate - marigold
- ___ 69. Dragon & Lotus ruffled bowl - red - cherry red color, rare
- ___ 70. Dragon & Lotus ruffled bowl - amber - very scarce
- ___ 71. Hearts & Flowers ruffled bowl - ice blue - very desirable pattern
- ___ 72. Fenton's Grape & Cable fruit bowl w/Persian Medallion interior - blue - nice
- ___ 73. Fenton's Grape & Cable fruit bowl w/Persian Medallion interior - marigold
- ___ 74. Circle Scroll ruffled hatshape - marigold
- ___ 75. Peacocks 9" plate - blue - pretty
- ___ 76. Unusual 3 pc. tumble up set, has panelled sides - marigold - nice, you name it!
- ___ 77. Diamond & Daisy 2 pc. tumble up, decanter & underplate, no tumbler - marigold
- ___ 78. Persian Medallion bon bon - red - nice, rare & desirable
- ___ 79. Lightning Flower single hdd nappy - marigold - scarce
- ___ 80. Apple Tree crimped edge water pitcher - blue - a very rare pitcher, nice
- ___ 81. Grape & Cable tumbler - purple
- ___ 82. Fleur De Lis 12" vase - marigold - very rare vase, need to be a body builder to lift it
- ___ 83. Grape & Cable 5 pc. berry set - marigold - nice
- ___ 84. Fine Rib 9" vase - aqua - nice
- ___ 85. Holly 9" plate - blue - pretty
- ___ 86. M'burg Zig Zag IC shaped bowl - marigold - radium
- ___ 87. Cut Star & File squatty ftd 6" vase - marigold
- ___ 88. Rose Show 9" plate - blue - very rare & desirable
- ___ 89. Columbia flat ftd plate - marigold - vase flattened out
- ___ 90. Fenton Peacock at Urn IC shaped bowl - blue
- ___ 91. Ripple 9" vase - blue - very rare color, Imperial blue
- ___ 92. Ripple 11" vase - amber
- ___ 93. Fishnet epergne - peach opal - very nice
- ___ 94. Strawberry 9" plate w/BW back - purple - pretty
- ___ 95. Strawberry 9" plate w/BW back - marigold - pretty
- ___ 96. Rising Sun ftd water pitcher - marigold - scarce
- ___ 97. Rising Sun tumblers (3) - marigold - choice
- ___ 98. Rising Sun water pitcher - marigold
- ___ 99. Rising Sun juice glasses (2) - marigold - choice
- ___ 100. Persian Garden 7pc. ruffled berry set - amethyst - rare set! very pretty
- ___ 101. Grape & Cable tumbler - green
- ___ 102. Dugan's Cherries 10 ruffled bowl - purple - pretty
- ___ 103. Hobstar & Finecut water pitcher - marigold - self-named, foreign, very rare
- ___ 104. Hobstar & Finecut tumbler - marigold, very rare
- ___ 105. Hearts & Flowers ruffled bowl - ice blue - desired pattern
- ___ 106. Acorn ruffled bowl - aqua
- ___ 107. Fenton's Peacock at Urn 9" plate - marigold - fantastic! has minor nick on urn
- ___ 108. Imperial Grape water pitcher - marigold
- ___ 109. Coin Spot ruffled compote - celest blue - very rare compote, pretty
- ___ 110. English 12" chop plate, unknown star pattern - marigold
- ___ 111. Star & File wines (7) - marigold - choice
- ___ 112. Single Flower hdd basket - peach opal
- ___ 113. Peacock & Grape ruffled bowl - green

Upcoming
Carnival Auction
Saturday, November 9th
Wentzville, MO

Seeck Auctions

P.O. Box 377
Mason City, Iowa 50402



- ___ 114. Holly ruffled hatshape - aqua
- ___ **115. Sailboat 6" plate - blue - silvery but rare!**
- ___ 116. Tree Trunk squatty 6" vase - purple
- ___ **117. Horse Medallion ftd nut bowl - vaseline - marigold overlay, pretty**
- ___ **118. Horse Medallion ftd nut bowl - amber - rare**
- ___ 119. Pinecone 6" plate - amethyst
- ___ **120. Windmill milk pitcher - purple - very scarce color for this milk pitcher**
- ___ 121. Field Flower tumbler - purple - spectacular
- ___ 122. Four-Seventy-Four milk pitchers (2) - marigold - choice
- ___ 123. M'burg Zig Zag 3 in 1 edge bowl - marigold - satin & nice
- ___ **124. N's Stippled Peacock at Urn master IC bowl - marigold - nice**
- ___ 125. Dahlia butterdish - marigold
- ___ 126. Lions round bowl - marigold - nice
- ___ **127. N's Corn vase - marigold - very scarce, highly desired piece**
- ___ **128. N's Corn vase - ice green - nice**
- ___ **129. N's Corn vase - white**
- ___ 130. Band of Cherries tumblers (2) - blue - foreign, choice
- ___ 131. Band of Cherries tumblers (2) - marigold
- ___ **132. Stippled Rays IC shaped compote - celest blue - rare**
- ___ **133. Garden Mums ruffled bowl - amethyst - pretty nice for these**
- ___ 134. Lightning Flower hdd nappy - marigold - scarce
- ___ **135. Panelled Dandelion 6 pc. tankard water set - amethyst - very rare set, nice**
- ___ 136. M'burg Cosmos 6" IC shaped bowl - green - radium, pretty
- ___ 137. N's Petals ruffled compote - purple - pretty irid.
- ___ 138. Acorn Burrs master berry bowl - marigold
- ___ 139. Singing Birds mug - purple
- ___ **140. Stippled Grape & Cable punch bowl & base - blue - extremely rare, one of the top pieces in the auction**
- ___ 141. Thin Rib & Drape 6" miniature vase - marigold - dark
- ___ **142. M'burg Hobnail rosebowl - marigold - scarce & nice**
- ___ 143. Sailboats ruffled sauce - amethyst - pretty
- ___ **144. Grape & Cable cracker jar - white - extremely rare & desirable, nice**
- ___ **145. Omnibus tumbler - marigold - nice, rare**
- ___ **146. Omnibus tumbler - blue - lacks irid., rare**
- ___ **147. Concord ruffled bowl - marigold - very desirable pattern, pretty**
- ___ 148. Stippled Good Luck 9" plate - marigold - pastel & super, has crack in base
- ___ 149. Grape & Cable ruffled bowl - purple
- ___ **150. Greek Key 9" plate w/BW back - marigold - scarce item**
- ___ 151. Grape & Gothic Arches creamer - blue - pretty
- ___ **152. Zippered Loop 6 1/4" high, 4" base small lamp - marigold - this is the smallest size**
- ___ **153. Zippered Loop 7 1/2" high 4 1/4" base - marigold**
- ___ **154. Acorn Burrs punch cups (4) - ice green - rare cups! choice**
- ___ 155. Acorn Burrs punch cup - white
- ___ 156. Acorn Burrs punch cup - green
- ___ **157. Eat Paradise Sodas adv. 6" plate - amethyst - very scarce plate**
- ___ 158. Peacock at the Fountain punch cup - marigold - pretty
- ___ 159. Peacock at the Fountain punch cup - purple
- ___ **160. Holly goblet shaped compote - red - always in demand**
- ___ 161. Circle Scroll creamer - marigold
- ___ 162. Circle Scroll spooner - marigold
- ___ 163. Diamond Lace water pitcher - purple - nice
- ___ 164. Jeweled Heart tumbler - marigold - nice
- ___ 165. Ski Star hand grip domed ftd plate - peach opal
- ___ 166. Thin Rib 10" vase - white
- ___ **167. Stippled Three Fruits 9" plate - amethyst - scarce plate**
- ___ **168. Stippled Three Fruits 9" plate - marigold - nice**
- ___ **169. Hearts & Flowers ruffled compote - purple - nice**
- ___ **170. Hearts & Flowers ruffled compote - blue - nice**
- ___ 171. Two Flowers large ruffled bowl - amethyst - very scarce color
- ___ **172. NUART Homestead chop plate - marigold - minor ruffness on high spots**
- ___ 173. M'burg Blackberry Wreath 7" ruffled bowl - amethyst - radium, super
- ___ **174. Tree Trunk 11" vase - sapphire - pastel irid.**
- ___ **175. M'burg Nesting Swan ruffled bowl - amethyst - radium & nice**
- ___ 176. Dugan's Vintage dome ftd deep ruffled bowl - green - rare color for Dugan
- ___ 177. Captive Rose crimped edge ruffled compote - amethyst - scarce compote
- ___ **178. Strawberry bon bon - lime green opal - rare color, pretty w/lots of opal**
- ___ 179. Oriental Poppy tumbler - green
- ___ **180. Greek Key 9" plate - green - very rare plate**
- ___ 181. Holly ruffled compote - amethyst - tough color to find
- ___ 182. Holly ruffled compote - green
- ___ 183. Holly ruffled compote - amber - scarce
- ___ 184. Holly ruffled compote - lime green
- ___ **185. Brooklyn Bridge ruffled bowl - marigold**
- ___ 186. Joan of Arc smelling salts bottle - marigold
- ___ 187. Good Luck PCE bowl w/ribbed back - blue
- ___ 188. Persian Garden 6" plate - marigold
- ___ **189. Fan tumbler - marigold - very scarce tumbler, dark & nice**
- ___ 190. Fanciful low ruffled bowl - white - pretty
- ___ 191. Two Flowers spt ftd ruffled bowl - amethyst
- ___ 192. Octagon water pitcher - marigold
- ___ 193. Lotus & Grape ftd IC shaped sauce - green - pretty

- ___ **194. Hobstar & Feather cracker jar - green - nice**
- ___ 195. Field Thistle creamer - marigold
- ___ 196. Field Thistle spooner - marigold
- ___ 197. Grape & Cable sweatmeat - amethyst
- ___ 198. Memphis punch cup - purple - pretty
- ___ **199. Horse Medallion ftd rosebowl - blue - scarce color**
- ___ **200. Blackberry Spray ruffled hatshape - red opal - outstanding!**
- ___ 201. M'burg Hanging Cherries flat round bowl - green - close to a plate
- ___ 202. Holly goblet shaped compote - pink
- ___ 203. M'burg Grape Wreath Variant 3 in 1 edge 8" bowl - amethyst - radium
- ___ 204. Cherry Chain 6" plate - marigold
- ___ **205. Orange Tree standard size mug - teal - very scarce color for mug**
- ___ 206. Blackberry Open Edge ruffled hat - amethyst
- ___ 207. Greek Key ruffled bowl - amethyst - minor ruffness around edge
- ___ 208. Four Pillars 10 1/2" vase w/Howard Furniture adv. - green - nick on top edge
- ___ 209. Florentine small size candlesticks - celest blue
- ___ 210. English bowl - blue - different
- ___ 211. Imperial Grape large round bowl - aqua - rare color
- ___ 212. Imperial Jewels candlestick - red - pretty
- ___ 213. Miniature Morning Glory 8" vase - purple
- ___ 214. Miniature Morning Glory 6 1/2" vase - green
- ___ 215. Stretch Glass 8" vase - celest blue
- ___ 216. Perfumes(3) - marigold - choice
- ___ **217. Thin Rib mid size 12" vase - green - nice**
- ___ **218. Jockey Club ruffled adv. bowl - amethyst - super, a very rare & desirable piece**
- ___ 219. Halloween barber bottles & vases - marigold - choice
- ___ 220. Toliet Water bottle - light marigold
- ___ 221. Miniature Mug shot glass - marigold
- ___ 222. Lucky Bank - marigold
- ___ 223. Hobstar Flower ruffled compote - marigold
- ___ 224. Fentons butterfly - marigold
- ___ 225. Enameled cordial - marigold
- ___ 226. Pansy ruffled bowl - purple
- ___ 227. Circle Scroll berry bowl - marigold
- ___ 228. Miniature Hobnail decanter - marigold - no stopper
- ___ 229. Daimond & Daisy Cut tumbler - marigold
- ___ 230. Smooth Panels 12" vase - marigold on milk glass
- ___ 231. Field Thistle round berry bowl - marigold
- ___ 232. Covered Box - marigold
- ___ 233. Daisy & Scroll decanter w/stopper - blue - lacks iridescence
- ___ 234. Basketflower hatpin - dark