

OUTSTANDING CARNIVAL GLASS

AUCTION

SATURDAY, SEPTEMBER 21, 1996 -- 9:30 A.M.



Holiday Inn -- Wentzville
900 Corporate Parkway
Wentzville, MO
(Exit 212a off of I-70)
Call (314) 327-7001 for reservations

JIM and JAN SEECK

Seeck Auctions

515-424-1116

CARNIVAL GLASS AUCTION

SATURDAY, SEPTEMBER 21, 1996 -- 9:30 A.M.

Holiday Inn -- Wentzville, MO

The Carlton and Rebecca Tarkington Collection

When you mention the name of Carlton and Rebecca Tarkington to collectors across the country, they instantly think of quality glass. Seeck Auctions is pleased to offer a portion of their great collection at auction. From top to bottom, this collection of Carnival Glass has quality color and iridescence. Plan your trip today, as this will be one not to miss!

PREVIEW: Friday, September 20, 3:00 P.M.

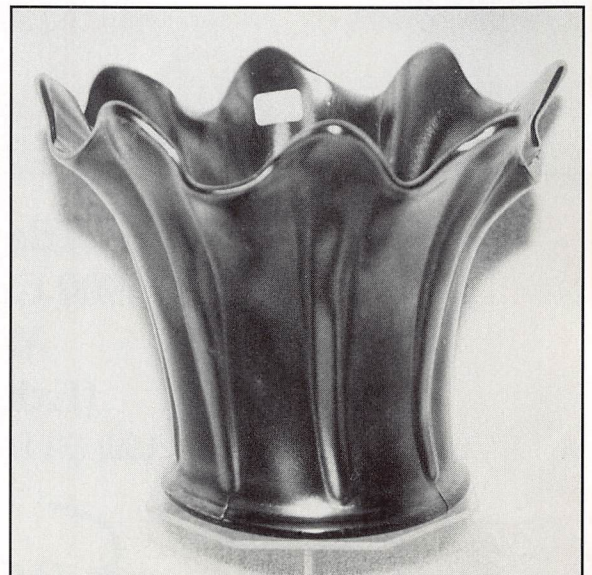
RESERVATIONS: Call (314) 327-7001 (Please ask for the Seeck Auction block of rooms)

WRITE-IN BID POLICY

1. Write-in bids will be accepted by sending the numbers of the item(s) desired and the amount bid on each to:
Seeck Auctions, PO Box 377, Mason City, Iowa 50402.
2. If known by Auction Company, bids may be done over the telephone. (515)424-1116.
3. There is a \$5 handling charge for each successful bid. Shipping and insurance charges are additional.
4. Bidders will be notified by a phone call if their bid(s) are successful. This call will be made 1 - 3 days after the auction is over.
5. Please have all bids in by Wednesday, September 18th. All bids (by mail or phone) after this date may not be carried out.
6. If you do not receive an item that sold for less than your bid, assume we cancelled your bid because the piece of glass had below average color, manufacture problem, damage or was not listed correctly.
7. To receive price lists send: \$20 -- for this auction and next 7 auctions
\$5 -- for only this auction or individual auction (please specify)

Send to the above address.

- ___ 1. Imperial Grape wine decanter, no stopper - marigold
- ___ 2. Imperial Grape wine decanter, no stopper - green
- ___ 3. Open Rose 8" ftd round bowl - amber
- ___ 4. Butterfly & Berry 10" vase - blue - pretty
- ___ 5. Fine Rib 9" vases (2) - blue - choice
- ___ 6. Coin Spot ruffled compote - marigold
- ___ 7. N's Swirl 9" vase - blue stretch
- ___ 8. Florentine large size candlesticks - celeste blue



9. Diamond Rib 11" vase - green
- 2250 10. Butterfly & Tulip square ruffled bowl - purple - outstanding example, highly desired & extremely rare
11. Tree Trunk 10 1/2" vases(2) - green - choice
12. Tree Trunk 10" vase - purple
13. Tree Trunk 11 1/2" vase - amethyst
- 1300 14. Peacock at the Fountain straight sided fruit bowl - purple - extremely rare w/out ruffle, a must for any Northwood collector, very pretty
15. Captive Rose crimped edge ruffled compote - amethyst
- 1900 16. Milady 7 pc. tankard water set - blue - outstanding set, as nice as they get, very rare & desirable
- 650 17. Milady tankard water pitcher - marigold - nice even color from top to bottom, also very rare
18. Milady tumbler - marigold
- 2300 19. Stippled Three Fruits 9" plate w/ribbed back - sapphire - very pretty example, extremely rare color
- 800 20. Stippled Three Fruits 9" plate w/ribbed back - lavender - very pretty
21. Stippled Three Fruits 9" plate w/ribbed back - purple - flat & nice
22. Stippled Three Fruits 9" plate w/ribbed back - marigold
23. N's Thin Rib 16" funeral vase - vaseline - pretty irid. & very rare
24. N's Thin Rib 12 1/2" mid-size funeral vase - white - scarce & nice
25. N's Thin Rib 12 1/2" mid-size funeral vase - green
26. Stippled Strawberry 9" plate w/ribbed back - purple - very rare stippled, nice even irid., hard to find
27. Blackberry Open Edge ruffled hat shape - green
- 1500 28. Peacocks 9" plate w/ribbed back - green - rare color & nice, highly desired
29. Peacocks 9" plate w/ribbed back - blue - nice!
30. Peacocks 9" plate w/ribbed back - purple
- 750 31. Peacocks 9" plate w/ribbed back - ice green
32. Peacock & Grape 9" ftd plate - green - very scarce item
33. Autumn Acorn IC shaped bowl - amethyst - pretty
- 2000 34. Strawberry Scroll water pitcher - marigold - a beautifully shaped water pitcher, even color from top to bottom, extremely rare

& desirable

- 325 35. Acorn ruffled bowl - amber opal - very rare color for this bowl
36. M'burg Hobnail Swirl 10" vase - green - very nice, scrapes along top edge
37. M'burg Hanging Cherries milk pitcher - marigold - minor heat check in base, rare
- 700 38. Many Fruits 8 pc. punch set - purple, has blue base - extremely rare, a matching set, blue Dugan base is very rare (matches too well to separate)
39. Stippled Rays IC shaped compote - vaseline - very rare
40. Grape & Cable water pitcher - green - always in demand
41. Grape & Cable tumbler - green
42. Grape & Cable 7 pc. water set - purple - outstanding set, pretty!
43. Peacocks ruffled bowl w/ribbed back - aqua opal - chip off front edge, nice irid.
- 1550 44. Peacocks ruffled bowl w/ribbed back - green - rare color, a nice bowl
45. Peacocks ruffled bowl w/ribbed back - purple - super nice bowl
46. Diamond Lace 7 pc. water set - purple - pretty
- 575 47. Diamond Points 10" vase - aqua opal - very nice w/lots of opal
48. Diamond Points 10" vase - ice green - scarce
49. Diamond Points 10" vase - green
50. Diamond Points 10" vase - amethyst
- 1050 51. Fruits & Flowers bon bon - sapphire - very, very rare color, few around, nice
- 750 52. Fruits & Flowers bon bon - lavender - true lavender, pretty w/pastel irid., very rare
53. Fruits & Flowers bon bon - blue - has electric irid., super
54. Fruits & Flowers bon bon - green
55. Fruits & Flowers bon bon - purple
56. Fruits & Flowers bon bon - marigold - dark
- 600 57. Peacock at the Fountain water pitcher - white - has gold painting, frosty & pretty
58. Peacock at the Fountain tumbler - white
- 500 59. Peacock at the Fountain water pitcher - ice blue - collar base has been buffed all the way around, fantastic irid.!
60. Peacock at the Fountain tumbler - ice blue - nice
61. Peacock at the Fountain 7 pc. water set - marigold - pretty set, nice matching color
62. Leaf Chain 9" plate - green - a better example than most
- 525 63. Leaf Chain 9" plate - marigold - very nice

w/pretty irid.

64. Leaf Chain 9" plate - white - nice
- 500 65. Grape & Cable banana boat - ice green - rare & desirable
66. Grape & Cable banana boat - green - scarce color
67. Ranger juice glass - marigold
68. Poppy Show vase - marigold - very scarce & very desirable
69. Pansy low ruffled bowl or plate - lavender - pretty, unusual & nice
- 625 70. Blackberry Spray JIP shaped CRE hat - red - super nice
71. Basketweave Open Edge ruffled hat - lavender
72. Basketweave Open Edge ruffled hat - blue
73. Basketweave Open Edge ruffled hat - vaseline
74. Good Luck ruffled bowl - blue - electric, even & super irid.
- 650 75. Butterfly & Berry 7 pc. water set - blue - extremely rare set
76. Ripple 9" vase - purple - pretty
77. Hearts & Flowers ruffled compote - aqua opal - desirable & nice
78. Hearts & Flowers ruffled compote - marigold - nice
79. Hearts & Flowers ruffled compote - white
80. Stag & Holly large size ftd IC shaped bowl - blue
81. Fruits & Flowers 7" ruffled bowl - blue - scarce color
- 3250 82. Hattie chop plate - amber - spectacular! extremely rare plate, few known
83. Double Loop chalice or sugar bowl - green
- 600 84. Stag & Holly large size ftd ruffled bowl - green - extremely rare color, very nice example
- 84a. Stag & Holly large size ftd ruffled bowl - odd lime green - has an amber tint, neat bowl
85. Stag & Holly large size ftd ruffled bowl - blue
86. Kittens ruffled bowl - marigold - nice
87. Kittens 4 sides up bowl - marigold - 2 sets of kittens
88. Kittens cereal bowl - marigold
- 1000 89. Holly ruffled bowl - red - cherry red, always in demand
- 600 90. Memphis 8 pc. punch set - purple - very scarce & desired set
- 900 91. Fenton's Peacock at Urn 9" plate - blue - electric & fantastic!
92. Stag & Holly small size spt ftd ruffled bowl - green
93. Pinecone 6" plate - green - scarce
94. Octagon punch cup - marigold - very rare punch cup, seldom seen
95. Australian Swan large ruffled bowl - purple - beautiful
96. Australian Swan ruffled sauce - purple
97. Grape & Gothic Arches water pitcher - blue - pretty & scarce
98. Grape & Gothic Arches tumbler - blue
99. Grape & Gothic Arches tumbler - marigold
- 2100 100. Peacock at the Fountain 8 pc. punch set - blue - super set, hard to find in blue
- 1300 101. Peacock at the Fountain 8 pc. punch set - purple - outstanding example, pretty
- 500 102. Peacock at the Fountain punch bowl & base - marigold - very pretty & scarce
103. Peacock at the Fountain punch cups (2) - marigold - choice
- 575 104. Nippon ruffled bowl - ice green - very pretty irid. on this very rare bowl
105. Imperial Grape water carafes (2) - purple - choice
106. M'burg Grape Wreath Variant crimped edge 8" ruffled bowl - amethyst - radium
- 600 107. Orange Tree 9" plate - blue - very pretty example
108. Orange Tree 9" plate - marigold
109. Orange Tree 9" plate - clambroth
- 525 110. N's Peacock at Urn master IC bowl - marigold - super special, lots of pink & blue irid.
- 900 111. N's Peacock at Urn master IC bowl - ice green - a very good example
- 600 112. N's Peacock at Urn master IC bowl - purple - very nice
113. N's Peacock at Urn sauces (4) - purple - choice
114. Grape & Cable PCE bowl w/BW back - pastel marigold - yellow irid.
- 550 115. Exchange Bank, Glendive, Montana adv. handgrip plate - amethyst - very pretty, rare & desirable
116. Greek Key tumblers (3) - amethyst - choice
117. Chrysanthemum large size IC shaped ftd bowl - blue - pretty blue irid.
- 650 118. Drapery rosebowl - ice blue - scarce, nice
119. Drapery rosebowl - aqua opal - butterscotch & nice
120. Grape & Cable 7 pc. small size punch set - purple - outstanding irid., a good quality set
121. N's Bushel Basket - blue
- 550 122. Grape & Cable centerpiece bowl w/points straight up - ice green - rare, nice irid.

- ____ 123. Heavy Grape 8" plate - pastel marigold - super pastel irid.
- 775 124. N's Thin Rib 6 1/2" midsize jardiniere - purple - this is the midsize vase that has not been swung, slightly ruffled at the top, neat piece!
- 350 125. Thistle 9" plate - amethyst - extremely rare plate, outstanding example, one of just a few known
- ____ 126. Rustic 10" vase - white
- ____ 127. Rustic 10" vase - green
- ____ 128. Blackberry Block tankard water pitcher - blue - a very pretty pitcher, hard to find, a Fenton classic
- ____ 129. Blackberry Block 7 pc. tankard water set - marigold - very dark to the bottom of pitcher, rare
- ____ 130. Blackberry Block tumblers (2) - amethyst - scarce
- 250 131. Thistle ruffled bowl - aqua - very scarce color, nice
- ____ 132. Leaf & Beads rosebowl - green - very pretty example
- ____ 133. Leaf & Beads rosebowl - blue - nice
- ____ 134. Holly 9" plate - blue - scarce & nice
- ____ 135. Holly 9" plate - marigold - super
- 650 136. Peacock & Grape IC shaped bowl - amberina red - very pretty bowl, extremely rare
- ____ 137. N's Swirl tankard water pitcher - green - scarce
- ____ 138. N's Swirl tumbler - green - scarce
- ____ 139. Rose Show 9" plate - blue - very pretty, has epoxy on a rose
- 525 140. Rose Show 9" plate - marigold - always in demand
- ____ 141. Rose Show 9" plate - white - a little deep, scarce
- ____ 142. Stippled Fruits & Flowers bon bon - marigold
- ____ 143. M'burg Peacock at Urn master berry bowl - green - radium, rare in green, nice
- ____ 144. M'burg Peacock at Urn master berry bowl - amethyst - radium
- ____ 145. Leaf Column 10" vase - sapphire - very rare vase, pretty
- ____ 146. Poppy Show ruffled bowl - marigold - very pretty, scarce
- ____ 147. Pulled Loop 11" vase - blue - very rare color, nice
- ____ 148. Grape & Cable 9" plate - purple - outstanding
- ____ 149. M'burg Grape Wreath Variant crimped edge sauce - green - radium, super

- 300 150. Memphis 8 pc. fruit bowl set - white - outstanding iridescence & frosty, extremely rare & desirable, a great opportunity to buy a this set
- 1050 151. Memphis 8 pc. fruit bowl set - green - also very nice for this scarce set
- ____ 152. Orange Tree hatpin holder - blue
- ____ 153. Orange Tree hatpin holder - marigold - nice
- 800 154. N's Corn vase - purple - very pretty example, these don't show up this nice
- ____ 155. Beaded Cable rosebowl - blue
- ____ 156. Grape & Cable centerpiece bowl - amethyst - a scarce piece, nice, small chip off toe
- ____ 157. Holly IC shaped bowl - white
- ____ 158. M'burg Rays & Ribbons square bowl - marigold - rare shape for this bowl, radium & nice
- ____ 159. N's Stippled Rays 10" PCE bowl - purple
- 1950 160. Four Seventy Four milk pitcher - purple - super, one of just a few known, a must for milk pitcher collectors
- ____ 161. Panelled JIP vase - purple - nice
- 750 162. Dugan Heavy Grape large ruffled bowl - purple - super irid. on this rare bowl
- ____ 163. Stippled Good Luck ruffled bowl - blue - super example
- ____ 164. Stippled Good Luck ruffled bowl - pastel marigold - fantastic irid.
- ____ 165. Tree Trunk 13" mid size vase - green - very scarce vase, minor spot on point
- ____ 166. Tree Trunk 13" mid size vase - purple - scarce
- ____ 167. Tree Trunk 13" mid size vase - marigold
- 1000 168. Stippled Peacock 9" plate - blue - very pretty, very scarce
- 600 169. Stippled Peacock 9" plate - marigold - also a nice example
- ____ 170. Garden Path Variant large ruffled bowl - peach opal - very pretty, very scarce
- ____ 171. Grape & Cable 7 1/2" plate - purple
- 900 172. Peacock at the Fountian fruit bowl - blue - scarce item, nice
- ____ 173. Lotus & Grape ftd sauce - blue
- ____ 174. M'burg Hobnail Swirl spittoon - amethyst - rare & desirable, nice
- ____ 175. Diamond Point 10" vase - purple
- 500 176. Banded Grape & Cable banana boat - reninger blue slag - very rare color, has slag effect in glass
- ____ 177. Dandelion tumbler - ice blue - scarce
- ____ 178. Dandelion tumblers (3) - purple - choice
- ____ 179. Ranger oblong squatty pitcher - marigold - dark & beautiful, only one we have seen
- ____ 180. Stream of Hearts ruffled compote -marigold

- 600 181. Lattice & Poinsettia ftd ruffled bowl - purple - very scarce, pretty
182. Lattice & Poinsettia ftd ruffled bowl - marigold - scarce
183. Lattice & Poinsettia ftd ruffled bowl - white opal - not carnival, scarce
- 500 184. Tornado large size vase - purple - always in demand, nice
185. Three Fruits 9" plate - purple - super
186. Stag & Holly small size ftd ruffled bowl - red - extremely rare, has chip on face near edge, cherry red color
187. Stag & Holly small size ruffled ftd bowl - green
- 725 188. Dreibus Parfait Sweets adv. ruffled bowl - amethyst - very scarce & nice
189. Thin Rib & Drape 5" squatty vase - purple - has 3 3/4" base, is flared 7" wide, a very rare vase
- 600 190. M'burg Courthouse ruffled bowl - amethyst - scarce & desirable, radium
191. Stippled Grape & Cable bon bon - marigold - pretty
- 950 192. Fluffy Peacock 6 pc. water set - green - very hard set to find, nice
193. Australian Kingfisher large ruffled bowl - purple - pretty
194. Australian Kingfisher small ruffled sauce - purple - pretty
- 700 195. Greek Key ruffled bowl - blue - electric & super, very rare in blue
196. Imperial Grape water bottle - marigold
197. M'burg Peacock ruffled sauce - amethyst - radium & super, a neat little bowl, pretty
198. Little Flowers rosebowl - smoke - very rare color
199. Blossomtime ruffled compote - purple - pretty irid.
- 2200 200. Diamond Points basket - marigold - extremely rare basket, very pretty, a must for basket collectors
201. Imperial Grape punch bowl & base - marigold
- 900 202. Daisy & Drape vase - aqua opal - super pretty butterscotch
203. Rustic midsize 15" vases(2)- green - choice
204. Rustic midsize 15" vase - amethyst
205. Rustic midsize 15" vase - blue
- 675 206. Springtime butterdish - green - hard to find
207. Grape & Cable cologne bottle - amethyst - pretty
- 1300 208. M'burg Many Stars IC shaped bowl - amethyst - radium & super, 5 point star, a

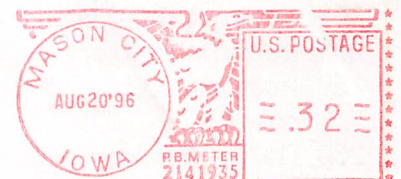
- great piece of M'burg
209. Grape Arbor fruit bowl - marigold
210. Honeycomb rosebowl - peach opal - pretty example
211. Hearts & Flowers ruffled bowl - ice blue
212. M'burg Blackberry Wreath 8" 3 in 1 edge bowl - green - radium
- 1500 213. Dragon & Lotus IC shaped bowl - red - cherry red color, very scarce & desirable
214. Tree Trunk 10 1/2" vase - ice blue - scarce & nice
215. Good Luck 9" plate w/BW back - marigold - very scarce
216. Memphis punch cups (8) - purple - choice
- 500 217. M'burg Trout & Fly ruffled bowl - green - satin & super
218. Oriental Poppy tumbler - ice blue - scarce
219. Dragon & Strawberry ftd ruffled bowl - marigold - dark & pretty
220. Imperial Grape 6" plate - purple
- 675 221. Wishbone ftd ruffled bowl - blue - hard to find color
- 650 222. Wishbone ftd ruffled bowl - white - also very hard to find
223. Grape & Cable tankard water pitcher - marigold - great color, has chip on base
224. Heavy Iris tumblers (2) - purple - pretty, choice
225. Australian Swan ruffled sauce - marigold - dark & pretty
226. Embroidered Mums ruffled bowl - purple - pretty
227. Beaded Shell mug - marigold - super! souvenir "Christine, N.D."
- 950 228. Rose Show ruffled bowl - ice green - super irid., very nice
229. Grape Delight rosebowl - purple - stunning!
230. Three Fruits dome ftd ruffled bowl - horehound - scarce color
231. Four Seventy Four punch cup - purple
232. Lined Lattice 9" vase - purple - pretty irid.
- 675 233. Wreath of Roses 5 pc. punch set - marigold - super dark! super pretty!
234. Grape & Cable PCE bowl w/BW back - amethyst
235. Waterlily ftd sauce - vaseline
- 900 236. Persian Medallion bon bon - red - very scarce & desirable
237. Waterlily large IC shaped ftd bowl - marigold
238. M'burg Grape Wreath Variant 8" ruffled bowl - amethyst - radium & super!
239. Stippled Peacocks ruffled bowl - reneger blue - very rare, one point has epoxy

240. Imperial Grape compote - aqua - scarce color
 675 241. M'burg Many Stars crimped edge ruffled bowl - amethyst - radium & rare, has six point star
 242. Raspberry tumbler - green
 243. Raspberry tumbler - marigold
 244. Four Flowers large ruffled bowl - purple - super pretty, Dugan purple is hot!
 245. Christmas Holly 10" vase - pale marigold - self named, never have I seen another
 246. M'burg Peacock small berry bowl - amethyst - radium, nice
 247. Wreathed Cherry tumbler - purple
 1050 248. N's Wide Panel epergne - green - outstanding, perfect
 249. Palm Beach 5" bowl - white
 250. Double Stemmed Rose dome ftd bowl - smokey lavender - rare color
 251. Butterfly & Fern 5 pc. water set - blue - scarce in this color
 252. Beaded Bullseye 12" vase - purple - super
 253. Beaded Bullseye 12" vase - marigold
 1050 254. Rose Show Variant ruffled bowl - reninger blue - very rare bowl, much more rare than Rose Show
 255. Inverted Feather parfait - marigold
 256. Horse Medallion 7" plate - marigold - nice
 257. Bouquet water pitcher - marigold - nice
 258. Bouquet tumbler - marigold
 259. Holly ruffled compote - pale blue - marigold overlay
 260. Holly ruffled compote - amethyst - scarce color
 500 261. Davidson Society Chocolates handgrip plate - amethyst - advertising is hot
 262. Corinth JIP vase - blue opal - as nice of one I've seen
 263. God & Home tumbler - blue - scarce
 264. Fenton Wide Panel 12" vase - blue - very pretty!
 265. Fenton Wide Panel 12" vase - ice green - scarce & pretty!
 266. Persian Garden large ruffled bowl - peach opal - very pretty, scarce
 267. Fashion tumblers (2) - marigold - choice
 268. Stippled Three Fruits ruffled bowl - marigold - dark & pretty
 269. Cosmos & Cane tumbler w/J. R. Millner Co. adv. - honey amber, a rare tumbler
 270. Beaded Shell mug - blue - scarce color
 271. Grape Arbor 7 pc. water set - marigold - scarce
 272. Wild Rose ftd bowl - blue - rare color, pretty
 273. Grape & Cable 10" ruffled bowl - marigold - pink irid., stunning, small nick on base
 274. Florentine candlesticks - vaseline
 1700 275. Apple Tree water pitcher - blue - very pretty, very rare, very nice
 276. Big Basketweave 10" vase - purple
 425 277. Palm Beach large bulbous vase - amethyst - very scarce item, neat
 278. Grape Wreath 7" ruffled bowl - green
 279. Singing Birds mug - purple
 280. Three Fruits spt ftd ruffled bowl - aqua opal - scarce
 281. April Showers 10" vase - green
 282. April Showers 11" vase - amethyst
 283. Dandelion tankard water pitcher - green w/gold paint - not carnival
 284. Four Pillars 10" vase - aqua opal
 285. Grape & Cable tumbler - marigold
 286. M'burg Little Stars 7" ruffled bowl - green - satin & pretty
 287. N's Bushel Basket - ice green
 288. Grape & Cable large ruffled bowl - green
 289. N's Thin Rib 9" vase - amethyst
 1200 290. Princess Lamp w/Lined Lattice shade - purple - fantastic irid.! pretty!
 291. Imperial Jewels vase w/Imperial Cross mark - marigold
 292. Enameled Daisies bulbous water pitcher - marigold - dark
 293. Grape & Cable ruffled bowl w/BW back - green
 294. Orange Tree mug - blue - super pretty
 295. Stippled Grape & Cable bon bon - vaseline opal - not carnival
 296. Peacock at the Fountain tumbler - blue
 297. Stork & Rushes tumbler - blue
 298. Fenton's Thin Rib 16 1/2" vase - marigold
 299. Daisy & Plume whimsey tri-cornered compote - green
 550 300. Heavy Grape chop plate - purple - fantastic!!! a super dooper!!
 301. Wide Panel plates (2) - red stretch - choice
 302. Wide Panel goblet - red stretch
 303. Thin Rib midsize 12" funeral vase - ice blue - probably new
 304. Paneled Diamonds & Bows 6" vase - blue
 305. Diamond Points 6" squatty vase - green
 306. Imperial Grape large round bowl - smoke
 307. N's Thin Rib 10 1/2" vase - russet
 308. Wide Panel candlestick - russet
 309. Wide Panel cvd candy dish - ice green
 310. Homestead chop plate - white - not old
 311. Large ftd fruit bowl - white - not old
 312. Paneled lamp shade - marigold



Seeck Auctions

P.O. Box 377
Mason City, Iowa 50402



FIRST CLASS

