

★ ★ ★ **TWO AUCTIONS** ★ ★ ★

Carnival Glass Auction
Friday, September 6, 1996

Toothpick Holders & Antiques
Saturday, September 7, 1996

AUCTION



CARNIVAL GLASS AUCTION



150A



15A



100, 40A, 100
 75, 140, 105, 130, 90



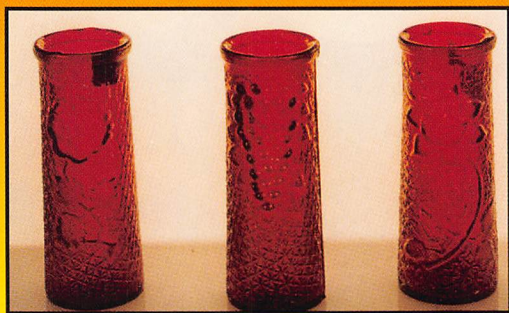
25, 170A
 25, 45A, 170A

◆ **Friday September 6, 1996 6 p.m.** ◆
Harley Hotel (exit 231b off I-70)
St. Louis, Missouri

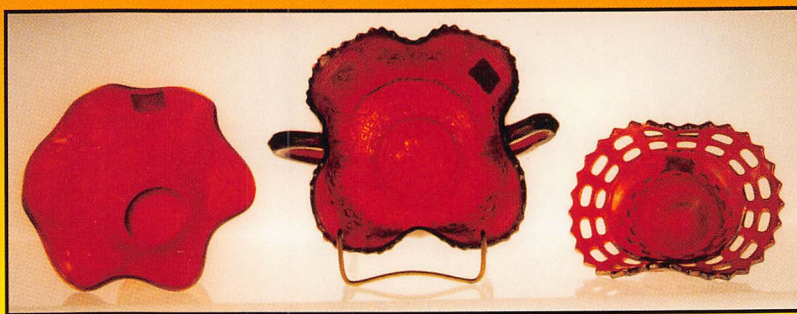
CARNIVAL GLASS AUCTION

Friday September 6, 1996 6 p.m.
Harley Hotel (exit 231b off I-70)
St. Louis, Missouri

Selling the fine collection of Patricia Sheets from Illinois with wonderful additions from Ron Burt of Missouri. Also selling an unusually large collection of contemporary Carnival Glass. Take a look through the list and find the reason you can not miss this Woody Auction!



160a, 120a, 60a,



30a, 35a, 25a

Preview: Friday 3 p.m.

Reservations: May be made by calling the Harley Hotel at (314) 291-6800.

Write-in-Bids: Accepted with a written statement of the amount of your bid.

DEADLINE: Thursday Noon! All write-in bids are entered just as if you are present and bidding.

NOTE! There is a 5% handling charge which will be added to the selling price of all write-in bids. This is in addition to postage and insurance. All write-ins will be taken to a professional pack-n-ship. For your convenience, Fax# (316) 747-2145.

- ___ 1. Wall Pocket Vase - M
- ___ 2. Pig Bank - M
- ___ 3. Rays Compote - M
- ___ 4. Rays Butter Dish - M
- ___ 5. Peacock at Fountain Sugar - M & Beaded Shell Tumbler - A; both damaged
- ___ 6. Scottie Powder Box - M
- ___ 7. Rays Compote - M
- ___ 8. Butterfly and Berry Vase - M
- ___ 9. Pulled Loop Vase - G
- 700 10. **RARE Christmas Compote - P**, identification mark on top side of base, minor
- ___ 11. 10" Rustic Vase - P
- ___ 12. Waffle Block Handled Basket - M
- ___ 13. Wildflower Handled Basket - M
- ___ 14. wildflower handled basket - new - g



10

- ___ 15. Peacock at Urn Ice Cream Bowl - W
- 2250 15a. **Butterfly and Tulip Footed Bowl - P - Super Iridescence, Beautiful Shape!!**
- ___ 16. wildflower handled basket - new - ib
- ___ 17. Northwood Bushel Basket - Cobalt Blue
- ___ 18. Northwood Bushel Basket - M
- ___ 19. Dugan Basketweave Handled Basket - M
- 700 20. **Orange Tree Plate - B - Super, Super Iridescence**
- ___ 21. Dugan Basketweave Basket - **Whimsy** - M
- ___ 22. Northwood Bushel Basket - crack - M
- 600 23. **Good Luck Bowl - CRE - Electric Blue**
- ___ 24. Strawberry Plate - P
- 900 25. **Acorn Burrs Water Set - P - Wow!**
- 400 25a. **Prim Rose and Fish Net Vase - RED**
- ___ 26. Good Luck Plate - M
- ___ 27. Windflower _____ - CB
- ___ 28. Open Rose Plate - G
- ___ 29. 8" Daisy Chain Plate - M
- 700 30. **Rose Show Bowl - Aqua Opal**
- 700 30a. **Rose and Fish Net Vase - RED**
- ___ 31. Grape and Cable Plate - P - Super Color

32. 9" Daisy Chain Plate - M - Extra Good Color
 33. Fruits and Flowers Plate - M
 34. 9" Daisy Chain Plate - G
 35. **Logan Berry Vase - Amber - Super Iridescence**
 35a. **Grape and Fish Net Vase - RED**
 36. Imperial Grape Ruffled Plate - M
 37. Windflower Bowl - M
 38. Vintage Bowl - G
 39. 10" Ski Star Bowl - PO
 40. Hearts and Flower Bowl - PCE - G
 40a. **God and Home Tumbler - B**
 41. Chrysanthemum Bowl - M
 42. Rays Two Handled Nappy - P
 43. Autumn Acorn Bowl - A
 44. Orange Tree Bowl - CB
 45. Town Pump w/ sm repair - P
 45a. **RARE Windflower Water Pitcher - B**
 46. Double Dutch Flat Relish Tray - P
 47. Double Dutch Relish Tray in Metal Holder - M
 48. 8" Double Dutch Bowl - M
 49. 5" Vintage Bowl - CB, poor color
 50. Nautilus _____ - PO
 50a. **Stippled Peacock on Fence Plate - B - Super Iridescence**
 51. Imperial Grape Berry Dish - G
 52. Sunflower Bowl - G
 53. Vintage Nutbowl - CB
 54. Apple and Pear Banana Boat - M
 55. Horse Medallion Nut Bowl - B
 56. Orange Tree Spoon Holder - M
 57. 6" Persian Medallion Bowl - W
 58. Horse Medallion Rose Bowl - M
 59. Leaf and Beads Rose Bowl - CB
 60. **Orange Tree Hat Pin Holder - M**
 60a. **Two Row Open Edge Basket - Super RED**
 61. Leaf and Beads Rose Bowl - M
 62. Vintage Nut Bowl - M
 63. Daisy and Plume Footed Rose Bowl - M
 64. Leaf and Beads Rose Bowl - G
 65. Fruits and Flowers Spatula Footed Bowl - P
 66. "Garland" Rose Bowl - B
 67. "Garland" Rose Bowl - B
 68. Orange Tree Rose Bowl - M
 69. Orange Tree Rose Bowl - M
 70. Persian Medallion Two Handled Bon-Bon - Teal
 70a. Grape and Cable Sweetmeat - A
 71. Drapery Rose Bowl - **Aqua Opal**
 72. Fine Cut and Roses Rose Bowl - M
 73. Fine Cut and Roses Rose Bowl - P
 74. Vintage Six Footed Rose Bowl - P
 75. Imperial Grape Wine Decanter - P
 76. Fine Cut and Roses Rose Bowl - G
 77. Dragon and Lotus Bowl - Unusual Super Green Color
 78. Dragon and Lotus Bowl - M
 79. Dragon and Lotus Bowl - M
 80. Inverted Feather Cracker Jar - G
 80a. **Beautiful Dandelion Tankard and Six Tumblers - M**



35, 80A, 90A ¹⁵⁰⁰ ice blue Perry Show plate

81. Orange Tree Bowl - B
 82. Millersburg Raspberry Bowl - G
 83. Peacock at the Fountain Bowl - B
 84. Hearts and Flowers Bowl - B
 85. Peacock at the Fountain Compote - M
 86. Chrysanthemum Bowl - M
 87. Thistle Bowl - M
 88. Peacock and Grape Bowl - M
 89. Acorn Bowl - Smoke
 90. Imperial Grape Wine Decanter - A
 90a. Imperial Grape Wine Decanter w/ Two Glasses - M
 91. Imperial Grape Ruffled Bowl - P
 92. Water Lily _____ - B
 93. Rays Bowl - A
 94. Rain Drop Bowl - PO
 95. Vineyard Water Pitcher - M
 96. Captive Rose Bowl - M
 97. Seaweed Bowl - CRE - M
 98. Vintage Bowl - A
 99. Grape Leaves Bowl - CRE - G
 100. Nice Pair Grape and Cable **Cologne Bottles - P**
 100a. **ROSE SHOW PLATE - SUPER BLUE - GREAT IRIDESCENCE**
 101. Autumn Acorn Bowl - CRE - A
 102. Trout and Fly Bowl - A
 103. Nesting Swan Bowl - M
 104. Thistle Bowl - A
 105. **Orange Tree Hat Pin Holder - B**
 106. Orange Tree Powder Jar - M
 107. Two Flowers Berry Bowl - A
 108. Twins Punch Bowl - M
 109. Drapery Candy Dish - Ice Blue
 110. Pine Cone 6" Plate - Deep Marigold
 110a. **Super Oriental Poppy Tankard and Six Tumblers - P**
 111. Fisherman's Mug - nick on base - P
 112. Small Orange Tree Mug - B
 113. Large Orange Tree Mug - B
 114. Small Orange Tree Mug - Vaseline
 115. Small Orange Tree Mug - CB
 116. Small Orange Tree Mug - M
 117. Small Orange Tree Mug - Pink, not iridescent
 118. Small Orange Tree Mug - Lime G, not iridescent
 119. Shell Mug - P
 120. Shell Mug - M





125, 175A, 30

825 **120a.Persian Medallion Two Handled Nappy - Gorgeous RED**

- ___ 121. Butterfly and Berry Table Set - B
- ___ 122. Grape and Cable Hat Pin Holder - P
- ___ 123. Dragon and Lotus Spatula Footed Bowl - M
- ___ 124. Thistle Bowl - CRE - A
- ___ 125. Corn Vase - White
- ___ 126. Fenton _____ - B
- ___ 127. Good Luck Bowl - repair - B
- ___ 128. Autumn Acorn _____ - damage - Ice Blue
- ___ 129. Grape and Cable Bon-Bon - G
- ___ 130. Orange Tree Hat Pin Holder - chip on foot - B

1400 **130a.RARE Amaryllis Miniature Compote - Deep Purple**

___ **131. Orange Tree Hat Pin Holder - P**

- ___ 132. Sunflower Bowl - G
- 1400 ___ 133. Hearts and Flowers Compote - G
- ___ 134. Peacock at Urn Compote - M
- ___ 135. Harvest Decanter and (7) Wines - M
- ___ 136. Peacock at Fountain Compote - M
- ___ 137. Iris Compote - G
- ___ 138. Rambling Rose Compote - G
- ___ 139. Captive Rose Compote - G

600 **140. Grape and Cable Hat Pin Holder - B**

140a.Grape Vine Lattice Tankard and Three Tumblers - A

- ___ 141. Blackberry Compote - Unusual Crimping - B
- ___ 142. Acorn Burrs Punch Bowl - repair - P
- ___ 143. Two Handled Compote - M
- ___ 144. Two Handled Three Fruits Compote - M
- ___ 145. Persian Medallion Compote - B
- ___ 146. Butterfly and Berry Butter Dish - B Base, G Lid
- ___ 147. Large Panther Bowl - M
- ___ 148. Large Panther Bowl and 2 Berry Bowls - M
- ___ 149. Soda Gold Cuspidor - M
- ___ 150. Kittens Banana Boat - M

725 **150a.Fluffy Peacock Water Set - Rare Amethyst**

- ___ 151. 10" Drapery Vase - Ice Green
- ___ 152. Six Petals Three Corner Bowl - PO
- ___ 153. Sailboat Berry Dish - Vaseline
- ___ 154. thistle Bowl - CRE - G
- ___ 155. Inverted Strawberry Bowl - G
- ___ 156. (2) Butterfly and Berry Dishes - M
- ___ 157. Butterfly and Berry Table Set - M, no butter lid, sugar damage
- ___ 158. Horse Medallion Jack-n-Pulpit Shape Bowl - M

- ___ 159. Stippled Rays Bowl - G

- ___ 160. Singing Bird Mug - A

425 **160a.Holly Hat - Beautiful RED**

- ___ 161. Holly Bowl - M
- ___ 162. Acorn Bowl - Teal

- ___ 163. Two Flowers Bowl - B

- ___ 164. Coin Dot Plate - A

- ___ 165. Captive Rose Bowl - G

- ___ 166. Acanthus Bowl - A

- ___ 167. Peacock at Urn sm Ice Cream Bowl, "Almost a Plate" - M

- ___ 168. Millersburg Peacock at Urn Ice Cream Bowl - A

- ___ 169. Millersburg Peacock at Urn Ice Cream Bowl - A

- ___ 170. 10-1/2" Rustic Vase - G

900 **170a.Acorn Burrs Water Set - Beautiful Gold Iridescence - P**

- ___ 171. 10" Rustic Vase - A

- ___ 172. Holly Ice Cream Shaped Bowl - B

- ___ 173. Vintage Bowl - A

- ___ 174. Two Row Open Edge Basket - M

- ___ 175. Blackberry Gravy Boat - P

850 **175a.DIAMOND POINTS BASKET - COBALT BLUE - has tiny nick on side**

- ___ 176. Vintage Three Footed Nut Bowl - B

- ___ 177. Sailboat Berry Dish - M

- ___ 178. Feathered Serpent Berry Dish - B

- ___ 179. (2) Sail Boat Berry Dishes - M

- ___ 180. 7" Rays Bowl - A

- ___ 180a.Australian Swan Berry Dish - P _____

- ___ 181. Poinsettia Milk Pitcher - M

- ___ 182. Hearts and Vine Bowl - Rich Marigold

- ___ 183. Holly Jelly Compote - M

- ___ 184. 7" Millersburg Hanging Cherry Bowl - M

- ___ 185. French Knots Hat - M

- ___ 186. Rosette Three Footed Bowl - A

- ___ 187. File Bowl w/ Embossed Scroll interior - P

- ___ 188. Octagon Decanter w/ (6) Wines - M

- ___ 189. Stag and Holly Spatula Footed Bowl - M

- ___ 190. Grape and Cable Spatula Footed Straight Edge Bowl - damage - M

- ___ 190a.Kingfisher Berry Dish - P

- ___ 191. Liberty Bell Whiskey Bottle - M

- ___ 192. Grape and Cable Spatula Footed Straight Edge Bowl - B

- ___ 193. Acorn Bowl - Teal

- ___ 194. Grape Delight Nut Bowl - B

- ___ 195. Miniature Blackberry Compote - B

- ___ 196. Hobstar Table Set - Good Marigold

- ___ 197. Hobstar Cracker Jar - M

- ___ 198. Grape and Cable Powder Jar - P - Good Iridescence

- ___ 199. Orange Tree Powder Jar - B - Good Iridescence

- ___ 200. 4 1/2" **Rococo** Vase - M

- ___ 201. 4" **Rococo** Vase - M

- ___ 202. Enamelled Water Set - B

- ___ 203. Floral and Grape Water Set - M

- ___ 204. Imperial Windmill Water Set - M

- ___ 205. Octagon Water Set - M

- ___ 206. Iris and Herring Bone Water Set - M



277, 20, 15

- _____ 207. Fashion Punch Bowl Set w/ 12 cups - M
- _____ 208. Wild Rose Footed Bowl - G
- _____ 209. Stork ABC Plate - M
- _____ 210. Sm Liberty Bell Whiskey Bottle - M
- _____ 2500 210a. Ten Mums Water Set - B - A RARE Find!
- _____ 211. Swan - Ice Green
- _____ 212. Swan - Pink
- _____ 213. Swan - Ice Blue
- _____ 214. Swan - Ice Green
- _____ 215. Twins Fruit Bowl and Stand - M
- _____ 216. 14" Fine Rib Vase - B - chip
- _____ 217. 8" Pulled Loop Vase - A
- _____ 218. Imperial Open Rose Fernery - M
- _____ 219. (2) Grape Arbor Tumblers - M
- _____ 220. (3) Peacock at Fountain Tumblers - P,A,B
- _____ 220a. Diving Dolphin Footed Rosebowl w/ Embossed
Scroll Center - Amethyst - chip on feet - Scarce!
- _____ 221. Grape and Cable Tumbler - P
- _____ 222. Imperial Grape Tumbler - P
- _____ 223. Grape and Cable Powder Jar - M
- _____ 224. Sailboat Berry Dish - M
- _____ 225. Imperial Stretch Glass Saucer
- _____ 226. Floral and Grape Water Set - M
- _____ 227. Fluted Celery - M
- _____ 228. Rococo Vase - chip - M
- _____ 229. Rays Bowl - G
- _____ 230. Stippled Rays Bowl - CRE - A
- _____ 231. Butterfly Hat Pin
- _____ 232. Beaded Hat Pin
- _____ 233. (2) Colonial Candlesticks - M
- _____ 234. Plain Bowl - M
- _____ 235. Heavy Grape Bowl - A
- _____ 236. Fentonia Berry Dish - B
- _____ 237. Kerosene Lamp - M
- _____ 238. (2) Car Vases - M
- _____ 239. Coin Dot Bowl - M
- _____ 240. 6" Coin Dot bowl - G
- _____ 241. Scottie Powder Jar - M
- _____ 242. Bambi Powder Jar - M
- _____ 243. Stork and Rushes Berry Dish - A
- _____ 244. Lamp Shade - M
- _____ 245. Plain Bowl - A
- _____ 246. Stippled Rays Berry Dish - G
- _____ 247. Rays Compote - M
- _____ 248. Pansy Sugar - G
- _____ 249. Fluted Grape Bowl - M
- _____ 250. Star Medallion Milk Pitcher - M
- _____ 251. Star Medallion Milk Pitcher - Smoke
- _____ 252. Dogwood Bowl - M
- _____ 253. Floral Bowl w/ 3-n-1 Edge - A
- _____ 254. Imperial Grape Decanter - M
- _____ 255. Ribbed Compote and (2) sm Bowls - M
- _____ 256. Square Acorn Candy Dish - M
- _____ 257. Sm Square Bowl - M
- _____ 258. 'IG' Zodiac Compote - M
- _____ 259. Bulls Eye and Leaves Bowl - G
- _____ 260. (2) Vintage Banded Mugs - M
- _____ 261. (3) Flower Frogs - M
- _____ 262. Crab Claw Tumbler - M
- _____ 263. Liberty Bell Bank - M
- _____ 264. (2) Insulators - M
- _____ 265. 12" Fine Rib Vase - B
- _____ 266. Stork and Rushes Vase - M
- _____ 267. (2) Handled Basketweave Baskets - M
- _____ 268. Piggy Bank - M
- _____ 269. Persian Medallion Berry Dish - B

- _____ 270. Strawberry Two Handled Nappy - M
- _____ 271. (2) Flute Candlesticks - M
- _____ 272. 14" Vase - M
- _____ 273. 16" Vase - B
- _____ 274. (2) Bark Vases - M
- _____ 275. (3) Geometric Bowls - Smoke
- _____ 276. Unusual Shaped Bowl - M
- _____ 277. 11" Grape and Cable Bowl - P
- _____ 278. (2) Grape and Cable Punch Cups - B
- _____ 279. Peacock at Fountain Tumbler - chip - B
- _____ 280. Butterfly and Berry Tumbler - B
- _____ 281. Grape and Cable Punch Cup - A
- _____ 282. Grape and Cable Punch Cup - Strange Blue
- _____ 283. (2) 7" Apple Blossom Bowls - M
- _____ 284. Rabbit Bank
- _____ 285. Candy Compote - A
- _____ 286. Grape and Cable Shot Glass - chip - A
- _____ 287. Buzz Saw Tumbler - G
- _____ 288. Imperial Stretch Compote and Plate - ice blue
- _____ 289. **Lg. Buzz Star Cruet** - nick on stopper - M
- _____ 290. **Sm. Buzz Star Cruet** - chip on stopper - G
- _____ 291. Panther Berry Dish - M
- _____ 292. Acorn Burrs Tumbler - M
- _____ 293. Grape and Cable Tumbler - White
- _____ 294. Grape and Cable Tumbler - M
- _____ 295. Poodle Powder Box - M
- _____ 296. Grape and Cable Cracker Jar Lid - P

• **ALL ITEMS LISTED BELOW ARE CONTEMPORARY** •

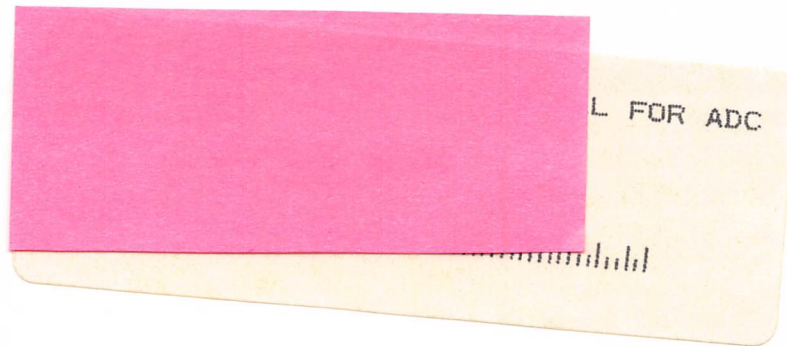
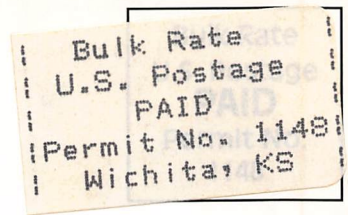
- _____ 300. tiger lily water set, m
- _____ 301. daisy and geometric cut water set, m
- _____ 302. heavy iris water set, p
- _____ 303. swirl and bead water set, r
- _____ 304. four seventy four water set, b
- _____ 305. tiger lily water set, ig
- _____ 306. robin water set, r
- _____ 307. checkerboard water set, bo
- _____ 308. god and home water set, ib
- _____ 309. hobnail handled decanter and six wines, r
- _____ 310. vintage and vine water set, r
- _____ 311. robin water set, b
- _____ 312. choice, (6) imperial grape water pitchers,
g,m,w,a and (2) smoke
- _____ 313. inverted strawberry water set, p
- _____ 314. dahlia water set, ib
- _____ 315. field flower water set, r
- _____ 316. hobnail water set, ibo
- _____ 317. stork and rushes water set, p
- _____ 318. vintage and vine water set, bo
- _____ 319. robin water set, ib
- _____ 320. daisy and geometric cut water set, s
- _____ 321. cactus water set, ao
- _____ 322. god and home water set, r



- ___ 323. panel water set, signed levay, amber
- ___ 324. god and home water set, ig
- ___ 325. multi-fruit? water set, b
- ___ 326. god and home water set, p
- ___ 327. field flower water set, ib
- ___ 328. checkerboard water set, ib
- ___ 329. hobstar and vesica two-piece punch bowl and six punch cups, w
- ___ 330. open rose butter dish, creamer, and sugar, w
- ___ 331. fenton mermaid jardiniere, p
- ___ 332. near cut creamer and sugar, r
- ___ 333. leaf mold console set, compote, creamer and sugar, r
- ___ 334. frolicking bears cuspidor 1982, r
- ___ 335. geometric cut miniature punch bowl, 6 cups, and table set, b
- ___ 336. seacoast cuspidor 1982, butterscotch
- ___ 337. homestead chop plate, w
- ___ 338. vintage and vine covered cigar box, b
- ___ 339. covered camel candy dish, aqua
- ___ 340. (2) miniature beaded drape lamps, r
- ___ 341. covered turkey candy dish, amber
- ___ 342. good luck hatpin holder 1980, ig
- ___ 343. town pump and trough, p
- ___ 344. (2) christmas plates: 1970, 1974
- ___ 345. madonna and child plate, signed mike fenton, r
- ___ 346. (2) sunflower relish trays, amber
- ___ 347. (2) pansy relish, one amber and one ice blue
- ___ 348. grape and cable covered cracker jar 1969, p
- ___ 349. (2) fenton dolphin paper weights
- ___ 350. (4) misc.figural paper weights: train, dog, frog, owl
- ___ 351. miniature panel water set, p
- ___ 352. checkerboard vinegar cruet, r
- ___ 353. (3) 1977 miniature ivy town pumps, r
- ___ 354. geometric cut miniature punch bowl and six cups, r
- ___ 355. scroll embossed? vase, p
- ___ 356. octagon toothpick, s and button and daisy toothpick, ig
- ___ 357. 474 salt and pepper, pink
- ___ 358. miniature peacock water set, ib
- ___ 359. robin mug, r
- ___ 360. 5" elk plate 1971, m
- ___ 361. molded poppies banquet lamp, r
- ___ 362. homestead chop plate, m
- ___ 363. (2) nursery rhyme child's mugs, s
- ___ 364. singing bird mug, r
- ___ 365. god and home mug, teal (Dayton, OH acga july 4, 1968)
- ___ 366. (3) souvenir paperweights - July 8, 1969
- ___ 367. (2) souvenir bottles "Gateway Arch Spirit of St. Louis, St.Louis, MO July 1969"
- ___ 368. smooth soda bottle, souvenir, s

- ___ 369. cactus toothpick holder - b
- ___ 370. barnyard plate, p
- ___ 371. frolic and berries cuspidor, 1982, r
- ___ 372. fenton pulled loop ruffled vase, r
- ___ 373. fenton mermaid jardiniere, p
- ___ 374. chrysanthemum plate, m
- ___ 375. homestead plate, w
- ___ 376. 1969 nation's capitol plate, p
- ___ 377. mt.rushmore 1970 plate, g
- ___ 378. pony head plate, p
- ___ 379. dutch windmill plate, b
- ___ 380. fenton 1969 grape and cable cracker jar
- ___ 381. 7-1/2" L.E.Smith Co.vase #3403 - only 200 ever made, p
- ___ 382. fenton peacock and apple blossom vase, p
- ___ 383. poppy mold carnival glass lamp, p
- ___ 384. 1976 ICGA picture frame
- ___ 385. town pump, m
- ___ 386. town pump, g
- ___ 387. 10" iridescent smiling cat
- ___ 388. signed Robert Hansen tree trunk toothpick holder, r
- ___ 389. signed Robert Hansen hobnail cuspidor, aqua
- ___ 390. signed Robert Hansen turkey toothpick holder, p
- ___ 391. fenton commemorative covered compote - thomas jefferson, b
- ___ 392. 9-1/2" hobnail and fan vase, b
- ___ 393. 474 vase, r
- ___ 394. covered turkey candy dish, p
- ___ 395. 1976 hoacga decanter and six glasses, r
- ___ 396. logan berry vase, w
- ___ 397. fenton hen on nest - large, p
- ___ 398. 1978 hoacga corn vase, r
- ___ 399. (6) indian head toothpick holders
- ___ 400. rooster on nest, m
- ___ 401. lion covered dish, s
- ___ 402. vaseline opalescent hobnail water set
- ___ 403. smith butter dish, p
- ___ 404. hen and chicks covered dish, m
- ___ 405. imperial grape milk pitcher, m
- ___ 406. 1974 good luck water pitcher and (6) tumblers, r
- ___ 407. st.clair pear shaped paper weight
- ___ 408. st.clair bell shaped paper weight
- ___ 409. st.clair apple shaped paper weight
- ___ 410. robin water pitcher and one tumbler, b
- ___ 411. field flower water pitcher and (6) tumblers, r
- ___ 412. fenton button and daisy bell and shoe
- ___ 413. experimental jumping fish bell
- ___ 414. imperial grape water pitcher, s
- ___ 415. (3) souvenir flasks
- ___ 416. imperial grape water carafe, s
- ___ 417. covered hen, g and imperial swan, s
- ___ 418. salt and peppers : aunt jemima, b; imperial grape, m; cactus, b
- ___ 419. (3) souvenir plates
- ___ 420. 1971 st.clair elk plate
- ___ 421. (6) mugs:robin, god and home, etc.
- ___ 422. (16) toothpick holders - all kinds
- ___ 423. 1971 icga paper weight
- ___ 424. (8) icga medallions
- ___ 425. (15) assorted tumblers
- ___ 426. (15) assorted items
- ___ 427. (12) figural items
- ___ 428. Iridescent Dolphin - Pele's Glass





* * * TWO AUCTIONS * * *

CARNIVAL GLASS AUCTION

**Friday
September 6, 1996
6 p.m.
Harley Hotel
(exit 231b off I-70)
St. Louis, Missouri**

TOOTHPICK HOLDER AUCTION

**Saturday
September 7, 1996
9:30 a.m.
Harley Hotel
(exit 231b off I-70)
St. Louis, Missouri**