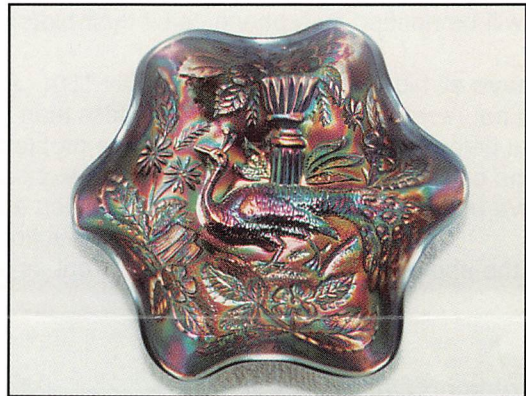


OUTSTANDING CARNIVAL GLASS

AUCTION

Saturday, MAY 18th, 1996 -- 9:00 A.M.



**Holiday Inn -- Wentzville
900 Corporate Parkway
Wentzville, MO
(Exit 212a off of I-70)
Call (314) 327-7001 for reservations**

JIM & JAN SEECK

Seeck Auctions

515-424-1116

CARNIVAL GLASS AUCTION

SATURDAY, May 18th, 1996 -- 9:00 A.M.

Holiday Inn -- Wentzville, MO

Seeck Auctions is pleased to be selling the Lester and Brenda Peters' collection of carnival glass from Indiana. There is a nice variety of items from a fantastic M'burg Hanging Cherries square shaped compote to a white Raspberry water pitcher. There should be something for all buyers. Notice the starting time will be at 9 a.m. Lists are not available for lots A, B, C or D. Hope to see you all at the Holiday Inn. Airport shuttle is available.

PREVIEW: Friday, May 17th, 3:00 P.M.

RESERVATIONS: Call (314) 327-7001 (Please ask for the Seeck Auction block of rooms)

WRITE-IN BID POLICY

1. Write-in bids will be accepted by sending the numbers of the item(s) desired and the amount bid on each to: Seeck Auctions, PO Box 377, Mason City, Iowa 50402.
2. If known by Auction Company, bids may be done over the telephone. (515)424-1116.
3. There is a \$5 handling charge for each successful bid. Shipping and insurance charges are additional.
4. Bidders will be notified by a phone call if their bid(s) are successful. This call will be made 1 - 3 days after the auction is over.
5. Please have all bids in by Wednesday, May 15th. All bids (by mail or phone) after this date may not be carried out.
6. If you do not receive an item that sold for less than your bid, assume we cancelled your bid because the piece of glass had below average color, manufacture problem, damage or was not listed correctly.
7. Please, no calls concerning write-in bids until Monday, May 20th.
8. To receive price lists send: \$20 -- for this auction and next 7 auctions
\$5 -- for only this auction or individual auction (please specify)
Send to the above address. (I will get these out as soon as possible.)

A -- Lot of old carnival glass - choice
B -- Lot of old carnival glass - choice
C -- Lot of new carnival glass - choice
D -- Lot of cut glass, cut crystal, pressed glass, cups
& saucers & other items - choice

- _____ 1. Lotus & Grape ball ftd sauce - blue
- _____ 2. Blackberry Bramble compote - green
- _____ 3. Knotted Beads CRE 9" vase - marigold
- _____ 4. April Showers 13" vase - blue
- _____ 5. April Showers 12" vase - marigold
- _____ 6. Question Mark bon bon - purple
- _____ 7. Question Mark bon bon - white
- _____ 8. Question Mark bon bon - peach opal
- _____ 9. Question Mark bon bons (2) - marigold - choice
- 2400 _____ 10. M'burg Peacock at Urn ruffled sauce - blue - spectacular sauce, one of the prettiest I've seen, rare, rare!
- _____ 11. N's Four Pillars 11" vases (2) - aqua opal - choice
- _____ 12. N's Four Pillars 10" vase - marigold
- _____ 13. Memphis fruit bowl & base - amethyst - very nice
- _____ 14. Big Basketweave 10" vase - blue - beautiful & rare in blue
- _____ 15. Puzzle banana boat shaped bon bon - white

- _____ 16. Puzzle banana boat shaped bon bon - purple
- _____ 17. Puzzle banana boat shaped bon bon - marigold
- _____ 18. Panelled Dandelion tankard water pitcher - green - nice pitcher
- _____ 19. Panelled Dandelion tumbler - green
- _____ 20. Wishbone ftd ruffled bowl - amethyst
- _____ 21. Lined Lattice ftd 11" vase - purple
- _____ 22. Lined Lattice 10" vase - white
- _____ 23. Fine Cut & Roses rosebowl - white - feet have epoxy
- _____ 24. Fine Cut & Roses rosebowl - green - pretty, normal feet
- _____ 25. N's Corn vase - purple - nice & rare
- 575 _____ 26. N's Corn vase - ice green, scarce
- _____ 27. Maple Leaf 7 pc. berry set - marigold
- _____ 28. Strawberry bon bon - vaseline - scarce
- _____ 29. Strawberry bon bon - blue
- 2600 _____ 30. Christmas compote - purple - outstanding example, a very beautiful & rare piece
- _____ 31. Vineyard 5 pc. water set - marigold
- _____ 32. Grape & Cable hatpin holder - purple
- _____ 33. Grape & Cable hatpin holder - green
- _____ 34. Grape & Cable hatpin holder - marigold
- _____ 35. Kittens plate - marigold (2 sets of kitties)

- _____ 36. Kittens ruffled bowl - marigold - minor nick on edge
- _____ 37. Peacock at the Fountain 7 pc. water set - blue - very nice set, highly desired
- _____ 38. Peacock at the Fountain water pitcher - purple - very nice
- _____ 39. Peacock at the Fountain tumbler - purple
- _____ 40. Leaf Chain 3 in 1 edge bowl - green - unusual shape for this bowl
- _____ 41. M'burg Grape Wreath Variant crimped edge bowl - amethyst - radium, super nice
- _____ 42. M'burg Grape Wreath Variant crimped edge bowl - marigold - radium
- _____ 43. Orange Tree loving cup - white - very rare color, not often sold
- _____ 44. Orange Tree loving cup - green - also quite rare
- _____ 45. Orange Tree loving cup - marigold - very nice
- _____ 46. Maple Leaf 7 pc. water set - marigold
- _____ 47. Pond Lily bon bon - white - scarce color
- _____ 48. Pond Lily bon bon - green
- _____ 49. Pond Lily bon bon - marigold
- 2300 50. Butterfly & Tulip square ftd bowl - purple - a classic rarity, super pretty, very rare and desirable
- _____ 51. Captive Rose ruffled bowl - green
- _____ 52. Fluffy Peacock water pitcher - green - very rare and desirable, nice
- _____ 53. Fluffy Peacock tumblers(2) - green - nice
- _____ 54. Open Rose 9" plates (2) - marigold - choice
- _____ 55. Lions ruffled bowl - blue - very scarce item, nice
- _____ 56. Lions ruffled bowl - marigold
- _____ 57. Ripple 8" vase w/2 1/2" bases (2) - marigold - choice
- _____ 58. Drapery rosebowl - aqua opal
- _____ 59. Starfish hdd compote - peach opal - nice
- 1000 60. Peacock at the Fountain 8 pc. punch set - amethyst - very rare and desirable, nice
- _____ 61. Vintage card tray shaped bon bon - amethyst
- _____ 62. Vintage card tray shaped bon bon - green
- _____ 63. Two Flowers large size ruffled ftd bowl - aqua - very rare bowl, nice
- _____ 64. Grape Delight rosebowl - amethyst
- _____ 65. Grape Delight rosebowl - marigold
- _____ 66. Fruits & Flowers bon bon - aqua opal - a collectors favorite, butterscotch and nice
- _____ 67. Fruits & Flowers bon bon - amethyst - nice
- _____ 68. Fruits & Flowers bon bon - marigold - nice
- _____ 69. Little Fishes large IC shaped ftd bowl - blue - scarce and pretty
- 1650 70. Poppy Show 9" plate - blue - very rare and desirable, a highly sought after item
- _____ 71. Thistle 3 in 1 edge bowl - amethyst
- _____ 72. Thistle 3 in 1 edge bowl - green
- _____ 73. Thistle 3 in 1 edge bowl - marigold
- _____ 74. Nautilus whimsey creamer - purple - nice
- _____ 75. Singing Birds water pitcher - amethyst - very scarce and desirable
- _____ 76. Singing Birds tumbler - amethyst - nice
- _____ 77. Diamond Lace water pitcher - nice
- _____ 78. Butterflies card tray shaped bon bon - blue
- _____ 79. Butterflies card tray shaped bon bon - amethyst
- 1000 80. Springtime 7pc. water set - marigold - one of the finer one of these I've seen, outstanding, rare & beautiful
- _____ 81. Illusion card tray shaped bon bon - blue - one of the best I've seen
- _____ 82. N's Bushel Basket - aqua opal - scarce
- _____ 83. N's Bushel Basket - marigold
- _____ 84. Dragon & Lotus ruffled bowls (2) - blue - choice
- 525 85. Dugan Cherries IC shaped bowl - purple - spectacular bowl, super pretty!
- _____ 86. Wreath of Roses bon bon - green
- _____ 87. Tiger Lily 7 pc. water set - green - nice set
- _____ 88. Four Flowers 6" plate - peach opal - nice
- _____ 89. Heavy Grape 8" plate - green
- 650 90. Rose Show ruffled bowl - blue - outstanding, rare in blue *
- _____ 91. Rose Show ruffled bowl - aqua - also rare, has small spot of epoxy on edge
- _____ 92. Heart & Vine ruffled bowl - green
- _____ 93. Bullseye & Beads 9 1/2" vase - marigold
- _____ 94. Grapevine Lattice 5 pc. tankard water set - amethyst
- _____ 95. Strawberry ruffled bowl w/BW back - green
- _____ 96. Carolina Dogwood ruffled bowl - blue opal
- _____ 97. N's Butterfly bon bon - green - super pretty
- _____ 98. N's Butterfly bon bon - amethyst
- _____ 99. N's Butterfly bon bon - marigold
- 3000 100. M'burg Hanging Cherries square shaped compote - amethyst - radium, extremely rare, one of two known, a top piece of M'burg
- _____ 101. Miniature Morning Glory 6" vase - marigold
- _____ 102. Mary Ann vase - marigold
- _____ 103. Waffle Block 8 pc. punch set - marigold - a tough set to find
- 550 104. Singing Birds 4 pc. table set - marigold - butterdish bottom has epoxy, choice
- _____ 105. Singing Birds mug - aqua opal - best I've seen but has 1" crack by handle
- 550 106. Singing Birds mug - ice blue - a dandy, rare

- ____ 107. Singing Birds mug - white - rare & nice
____ 108. Singing Birds mug - lavender - scarce
____ 109. Singing Birds mug - green
____ 110. Singing Birds mug (2) - blue - choice
____ 111. Singing Birds mug (2) - amethyst
____ 112. Singing Birds mug - marigold
____ 113. Two Fruits divided bon bon - blue
____ 114. Two Fruits divided bon bon - marigold
____ 115. N's Rose Wreath bon bon - amethyst - in high demand
____ 116. Wishbone 9" ftd plate - purple - a pretty plate
____ 117. Grape & Cable 7 pc. water set - purple - always desired
____ 118. Grape & Cable water pitcher - marigold - nice
____ 119. Grape & Cable tumbler - marigold
950 ____ 120. Raspberry water pitcher - white - very rare pitcher
____ 121. Raspberry 7 pc. water set - purple - nice set
____ 122. Puzzle round bon bon - peach opal
____ 123. Good Luck ruffled bowl w/ribbed back - blue - very nice
____ 124. Good Luck ruffled bowl w/BW back - green
____ 125. Floral & Grape 7 pc. water set - marigold
____ 126. Heavy Grape chop plate - marigold
____ 127. Scotch Thistle crimped edge compote - green
____ 128. Rustic 15" vase - blue
____ 129. Fruits & Flowers 7" ruffled bowl - purple
1600 ____ 130. Nippon PCE bowl - aqua - extremely rare bowl, one of just a few known, a must for Northwood collectors
____ 131. Captive Rose bon bon - blue
____ 132. Captive Rose card tray shaped bon bon - marigold
____ 133. Peacocks 9" plate w/ribbed back - marigold - dark & nice, a good one!
____ 134. Peacocks 9" plate w/ribbed back - ice green - very nice
700 ____ 135. Peacocks 9" plate w/plain back - white - also nice
____ 136. Panelled Holly bon bon - green
____ 137. Persian Medallion bon bon - red - has epoxy by handle & on base
____ 138. Persian Medallion bon bon - aqua - scarce color
____ 139. Persian Medallion bon bon - marigold
____ 140. M'burg Diamonds water pitcher - amethyst - has manufacture rough base
____ 141. M'burg Diamonds tumbler - amethyst - very pretty
2850 ____ 142. Grape & Cable 11 pc. straight sided

- master punch set - purple - extremely rare punch set & very nice
____ 143. Illusion bon bon - marigold
____ 144. Rose Show Variant ruffled bowl - marigold - dark & beautiful, has epoxy on rose
____ 145. Pond Lily card tray shaped bon bon - blue
____ 146. Pond Lily card tray shaped bon bon - green
____ 147. Ten Mums tumbler - marigold
____ 148. Grape Arbor tankard water pitcher - marigold
____ 149. Grape Arbor tumbler - marigold
____ 150. Buzz Saw small size cruet w/stopper - green - minor spot on stopper
____ 150a. Orange Tree 9" plates (2) - blue - choice
____ 151. Basketweave Open Edge 2 sides up basket w/Miller Furniture adv. - marigold
____ 152. Acorn Burrs butterdish - purple - epoxy on bottom of lid
____ 153. Acorn Burrs spooner - purple - epoxy on base
____ 154. Dugan Cherries large ruffled bowl w/Jeweled Heart exterior - peach opal - nice piece
____ 155. Basketweave Open Edge JIP shaped basket - red
____ 156. Basketweave Open Edge JIP shaped basket - vaseline
____ 157. Concord 3 in 1 edge bowl - amethyst - super, has chip on base
____ 158. N's Town Pump - purple - minor spot of epoxy on bottom of handle
____ 159. Birds & Cherries card tray shaped bon bon - green
____ 160. Milady tankard water pitcher - blue - very rare pitcher
____ 161. Milady tumbler - blue
____ 162. Four-Seventy-Four large size water pitcher - marigold
____ 163. Four-Seventy-Four tumbler - marigold
____ 164. Persian Garden 7" plate - white
____ 165. Persian Garden 6" plate - marigold
____ 166. Flute toothpick - marigold
____ 167. Flute toothpick - green - chip on edge
____ 168. Ski Star crimped edge ruffled bowl - peach opal - nice
575 ____ 169. Round Up IC shaped bowl - amethyst - super irid., very pretty piece
____ 170. Round Up IC shaped bowl - white
____ 171. Leaf Chain 7" plates (2) - blue - choice
____ 172. Hearts & Flowers compote - aqua opal - epoxy on top edge
____ 173. Hearts & Flowers compote - blue

- ____ 174. Hearts & Flowers compote - marigold - minor pinpoint on base
- ____ 175. Hearts & Flowers compote - white
- ____ 176. Fan gravy boat - peach opal
- ____ 177. Dandelion mug - aqua opal - small nick on base
- ____ 178. Imperial Grape deep round bowl - purple - pretty
- ____ 179. Stippled Three Fruits spt ftd bowl - aqua opal
- ____ 180. Birds & Cherries ruffled compote - green
- 900 ____ 181. Embroidered Mums bon bon - white - extremely rare & desirable, not many known
- ____ 182. Blackberry Spray JIP crimped edge hatshape - vaseline
- ____ 183. Four Flowers chop plate - peach opal - epoxy on edge
- ____ 184. Dugan Cherries ftd ruffled bowl - purple - spectacular irid.
- ____ 185. Holly ruffled bowl - green
- ____ 186. M'burg Nesting Swan ruffled bowl - green - radium & pretty
- ____ 187. Lotus & Grape ruffled bowl - green
- ____ 188. Acorn Burrs water pitcher - amethyst - very rare and desirable, nice
- ____ 189. Acorn Burrs tumbler - amethyst
- ____ 190. Orange Tree 3 in 1 edge bowl - green - very scarce bowl
- 750 ____ 191. Peacocks ruffled bowl w/ribbed back - aqua opal - very nice bowl, very scarce and desirable
- ____ 192. Two Flowers 9" ruffled collar base bowl - marigold - very rare w/collar base
- 550 ____ 193. Fenton's Grape & Cable fruit bowl w/Persian Medallion Interior - green - very nice and scarce
- ____ 194. Grape & Cable powder jar - amethyst
- ____ 195. Persian Garden large IC bowl - white - scarce
- ____ 196. Grape & Cable sweetmeat - amethyst
- 1000 ____ 197. M'burg Night Stars bon bon - olive green - very rare piece, radium and nice
- ____ 198. Lattice & Daisy ruffled bowl - marigold
- ____ 199. N's Dandelion tankard water pitcher & tumbler - green - very pretty, but pitcher has crack in handle, and tumbler is damaged
- ____ 200. Stippled Three Fruits ruffled bowl - amethyst - scarce
- ____ 201. 1909 Louisville Shriners champagne - clear
- ____ 202. 1911 Rochester Shriners champagne - clear
- ____ 203. Stippled Good Luck ruffled bowl - blue - very nice, pretty
- ____ 204. Stippled Good Luck ruffled bowl - marigold - nice
- ____ 205. Orange Tree ruffled bowl - marigold
- 600 ____ 206. Wreath of Roses punch bowl and base - green - very pretty and scarce
- ____ 207. Persian Medallion crimped edge ruffled compote - green - chip on base
- ____ 208. Oriental Poppy tankard water pitcher - amethyst - scarce and nice
- ____ 209. Oriental Poppy tumbler - amethyst
- ____ 210. Three Fruits 9" plate w/BW back - horehound - scarce color for this plate
- ____ 211. Three Fruits 9" plate w/plain back - green - rough base
- ____ 212. Three Fruits 9" plate w/plain back - marigold
- ____ 213. Butterfly & Berry whimsey hatpin holder made from tumbler - marigold - two heat checks in base, one of two known
- ____ 214. Orange Tree 8 pc. punch set w/ruffled top - blue
- ____ 215. Cherry Chain 10" IC shaped bowl - white
- ____ 216. Ripple 13 1/2" vase - purple - pretty
- 600 ____ 217. Blackberry Spray ruffled hat shape - cherry red
- ____ 218. Rambling Rose water pitcher - amethyst
- ____ 219. Lotus & Grape card tray shaped bon bon - blue
- ____ 220. Fenton's Peacock at Urn ruffled bowl - blue
- ____ 221. Fenton's Peacock at Urn ruffled bowl - white
- ____ 222. Fenton's Peacock at Urn ruffled bowl - marigold
- ____ 223. Vintage powder jar - marigold
- ____ 224. M'burg Peacock at Urn mystery bowl - green - radium & super nice
- ____ 225. Windmill ruffled bowl - purple - nice
- 525 ____ 226. Fenton's Peacock at Urn 9" plate - blue - desirable & pretty
- ____ 226a. Fenton's Peacock at Urn 9" plate - marigold
- ____ 227. Strawberry 9" plate w/BW back - purple
- ____ 228. Swan salt - peach opal - very nice example
- ____ 229. Swan salt - amethyst - also very nice
- ____ 230. Swan salt - milkglass - not carnival, extremely rare
- ____ 231. Swan salt - blue opal - not carnival
- ____ 232. Swan salt - ice green
- ____ 233. Swan salt - light lavender - odd color
- ____ 234. Swan salts (2) - pink - choice

- ____ 235. Greek Key ruffled bowl w/BW back - green
- super nice
- ____ 236. Starfish compote - peach opal - pretty
- ____ 237. Grape & Cable cologne bottle - purple
- ____ 238. N's Thin Rib 10 1/2" vase - ice green -
scarce
- ____ 239. Autumn Acorn IC shaped bowl - amethyst
- ____ 240. Peacock at the Fountain table set
(creamer has cracked handle) - purple -
choice
- ____ 241. M'burg Holly card tray shaped bon bon -
green - radium
- ____ 242. Rose Show 9" plate - white - **scarce &
desirable**
- ____ 243. Grape Delight nut bowl - purple
- ____ 244. Smooth Rays compote - blue opal
- 650 ____ 245. M'burg Roses & Fruits bon bon -
marigold - radium, very rare & desirable,
a M'burg favorite
- ____ 246. Persian Medallion 6" plate - blue
- ____ 247. Orange Tree standard size mug - blue
- ____ 248. Embroidered Mums ruffled bowl
w/ribbed back - ice green - **extremely
rare bowl, has small spot of epoxy on
edge**
- ____ 249. Grape & Cable bon bon - green
- ____ 250. Grape & Cable bon bon - marigold
- ____ 251. Drapery candy dish - ice blue - normal feet
- ____ 252. Peacocks PCE bowl - purple - very
pretty, scarce
- ____ 253. Shell & Sand 9" plate - green
- ____ 254. Hearts & Flowers 9" plate - green - very
**rare plate, but has small spot of epoxy
on point**
- ____ 255. Lotus & Grape bon bon - marigold
- ____ 256. Zippered Loop 7 1/2" high, 4 1/2" base,
lamp - marigold - **scarce item**
- ____ 257. Ski Star large ruffled bowl - peach opal
- ____ 258. Fenton's Peacock at Urn ruffled compote -
blue - nice
- ____ 259. Fenton's Peacock at Urn ruffled
compotes(2) - marigold - **choice**
- 600 ____ 260. Homestead Chop plate - amethyst - very
pretty, and rare, has nick in pattern
- ____ 261. Fenton's Peacock at Urn IC shaped bowl -
blue
- ____ 262. Vintage large size ruffled bowl - blue
- 550 ____ 263. Peacock at the Fountain ruffled fruit
bowl - amethyst - **very pretty, rare and
desirable**
- ____ 264. Pony ruffled bowl - marigold
- ____ 265. Ribbon Tie low ruffled bowl - blue
- ____ 266. Cherry Chain card tray shaped bon bon -
blue
- ____ 267. M'burg Peacock at Urn large ruffled
bowl - amethyst - **satin and scarce**
- ____ 268. Fenton's Grape & Cable deep round bowl -
aqua
- ____ 269. Raspberry milk pitcher - amethyst
- ____ 270. Basketweave Open Edge 2 sides up
basket - red - heat check in base
- ____ 271. Basketweave Open Edge 2 sides up
basket - lavender
- ____ 272. Peacock & Grape ruffled bowl - blue - nice
- ____ 273. Stippled Grape & Cable 9" plate - purple
- **very rare stippled, highly desired**
- ____ 274. Horse Medallion JIP ftd bowl - marigold -
point nick
- ____ 275. Concord ruffled bowl - marigold - **scarce
pattern**
- ____ 276. Town Pump & Trough - green - signed
Robert Hansen
- ____ 277. Long Thumbprint short 7" squatty vase -
green - large mouth, unusual
- ____ 278. Hearts & Flowers ruffled bowl - white
- ____ 279. Five Hearts dome ftd plate - marigold
- ____ 280. Leaf Chain 9" plate - marigold
- ____ 281. Corinth 10" vase - teal green
- ____ 282. Birds & Cherries bon bon - marigold
- ____ 283. Orange Tree hatpin holder - blue - **super
pretty irid.**
- ____ 284. Smooth Ribs whimsy bowl - peach opal
- ____ 285. Fine Rib 9" vase - red - epoxy in base
- ____ 286. Stippled Three Fruits 9" plate - marigold
- **very nice**
- ____ 287. Scroll Embossed round bowl - emerald
green - pretty
- ____ 288. Scroll Embossed round bowl - pastel
marigold - pretty
- ____ 289. Butterflies bon bon - marigold
- ____ 290. Fashion 8 pc. punch set - marigold
- ____ 291. Stippled Grape & Cable 9" plate w/ribbed
back - green - epoxy on point
- ____ 292. Star of David & Bows dome ftd bowl -
amethyst - silvery
- ____ 293. Basketweave Open Edge ruffled hatshape
- red - damaged
- ____ 294. Stippled Grape & Cable punch cup - blue -
pretty
- ____ 295. Good Luck 9" plate - purple - **very nice
plate**
- ____ 296. Persian Medallion card tray shaped bon
bon - blue - chip on point
- ____ 297. Beaded Purse
- ____ 298. Acanthus deep round bowl - dark marigold
- ____ 299. Premium candlesticks - marigold
- ____ 300. Heavy Grape 6" round bowl - lime green
- ____ 301. Garden Path Variant deep round bowl -

marigold

___ 302. **Poinsettia & Lattice ruffled ftd bowl - amethyst**

___ 303. Iris ruffled compote - marigold

___ 304. Pansy ruffled bowl - green

___ 305. N's Swirl tankard pitcher and tumbler - marigold

___ 306. Corinth 6" squatty vase - peach opal

___ 307. May basket - marigold

___ 308. Twins Fruit bowl - marigold

___ 309. Carnival Hobstar covered cracker jar - marigold

___ 310. **M'burg Peacock deep master berry bowl - marigold - radium and super**

___ 311. Imperial Grape 4 pc. wine set - marigold

___ 312. Honey Pot - blue

___ 313. Acanthus chop plate - marigold

___ 314. Vintage bon bon - marigold

___ 315. Smooth Panels 12" vase - marigold

___ 316. Fenton's Thin Rib 12" vase - blue

___ 317. Long Thumbprint 10" vase - amethyst

___ 318. Feathers 11" vase - green

___ 319. Wreath of Roses punch cups w/Vintage interior (5) - amethyst - choice

___ 320. Feathered Serpent round sauce - green

___ 321. Stippled Rays 6" plates(2) - marigold - choice

___ 322. **Orange Tree 9" plate - marigold - outstanding example, dark and pretty**

___ 323. Brocaded Acorns card tray shaped bon bon - ice blue

___ 324. Brocaded Palms card tray shaped bon bon - ice green

___ 325. Triad hatpin - dark

___ 326. Pansy pickle dishes (2) - amber - choice

___ 326a. Pansy pickle dish - purple

___ 327. Pansy pickle dishes (2) - green - choice

___ 328. Cherry Cicles bon bon - marigold

___ 329. Peacock Tail bon bon - green

___ 330. Peacock Tail bon bon - marigold

___ 331. Carnival shade - white

3600 ___ 332. **Thistle 9" plate - green - outstanding example, super pretty! extremely desirable**

___ 333. Twigs 8" vase - amethyst

___ 334. Spirel candlesticks - marigold

___ 335. Double Stemmed Rose dome ftd round bowl - marigold

___ 336. Double Stemmed Rose dome ftd ruffled bowl - marigold

___ 337. Pansy creamer & sugar - amber

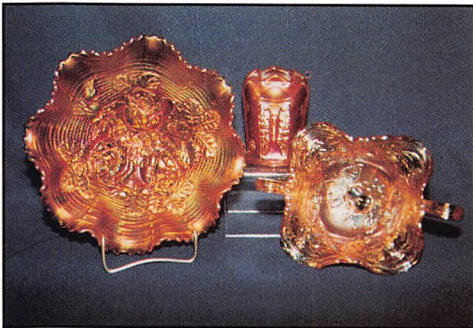
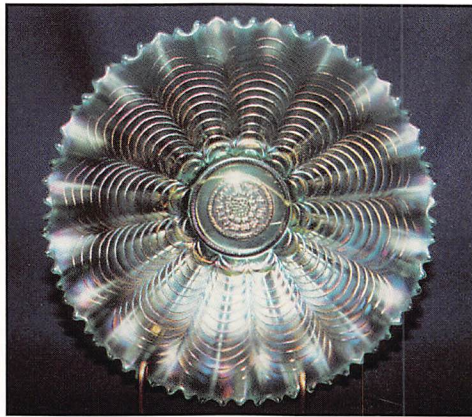
___ 338. Miniature Basketweave basket - marigold

___ 339. Open Rose ruffled bowl - amber

___ 340. Vintage ruffled sauce - green

___ 341. Stippled Rays bon bon - amethyst

___ 342. Stippled Rays card tray shaped bon bon - green



Seeck Auctions

P.O. Box 377
Mason City, Iowa 50402

