

H.O.A.C.G.A. Convention

AUCTION

Bob & Faye Allaire Collection



Saturday, April 27, 1996 – 9:30 A.M.
Holiday Inn – Lenexa, Kansas
I-35 & 95th Street

Seeck Auctions

JIM & JAN SEECK

515-424-1116

H.O.A.C.G.A Convention Auction

Saturday, April 27, 1996 -- 9:30 A.M.

The Heart of America convention goers are in for a treat this year. With the help of Bob and Faye Allaire of Texas, they are going to have one of the best convention auctions they have ever had! Bob and Faye have decided to sell their fantastic collection of Carnival Glass to the highest bidder. Rare Millersburg, rare plates, red, I could go on forever. What a great opportunity to buy some premier pieces of carnival glass. Make attendance to this convention a priority this year. It will be worth it!

Call 913-888-6670 or 800-527-0582 for reservations: Please specify that you are with the HOACGA Convention.

H.O.A.C.G.A. Convention information: Contact HOACGA president Robert Grissom at (816)356-5320.

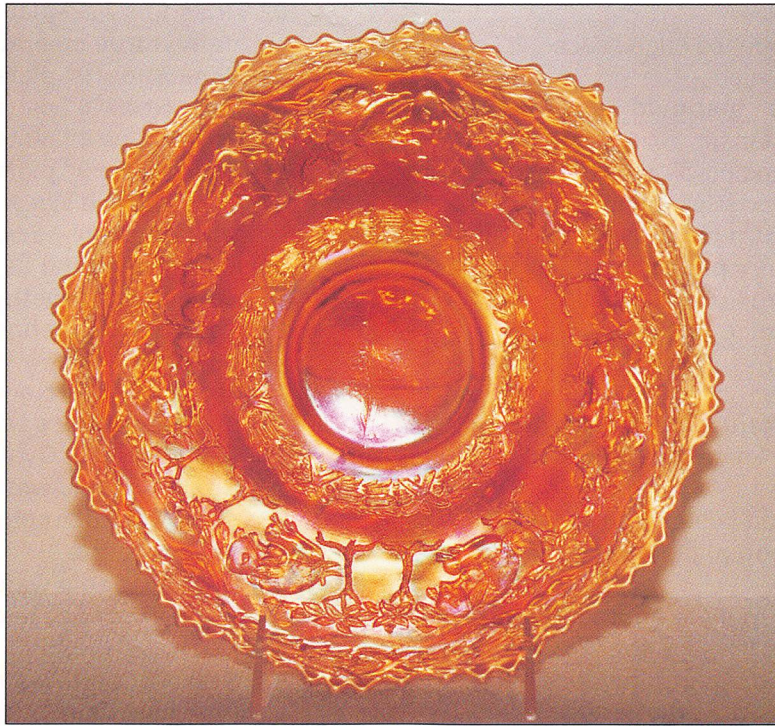
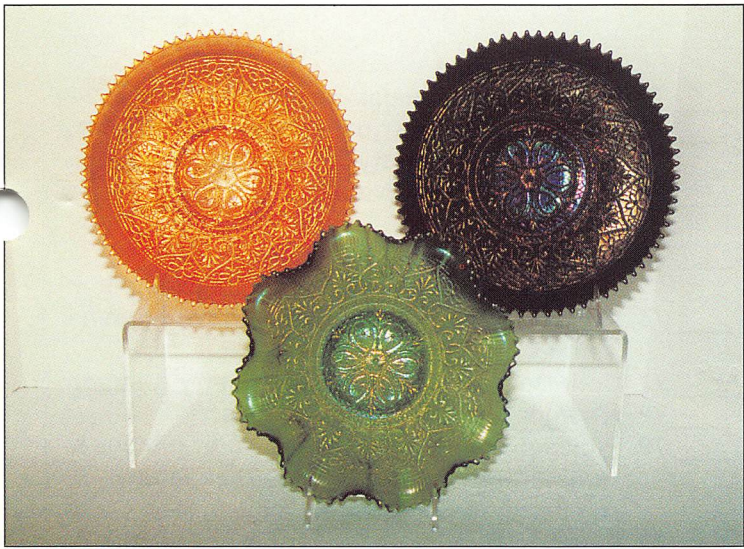
Preview: Friday evening.

WRITE-IN BID POLICY

1. Write-in bids will be accepted by sending the numbers of the item(s) desired and the amount bid on each to:
Seeck Auctions, PO Box 377, Mason City, Iowa 50402.
2. If known by Auction Company, bids may be done over the telephone. (515)424-1116.
3. There is a \$5 handling charge for each successful bid. Shipping and insurance charges are additional.
4. Bidders will be notified by a phone call if their bid(s) are successful. This call will be made 1 - 3 days after the auction is over.
5. Please have all bids in by Wednesday, April 24th. All bids (by mail or phone) after this date may not be carried out.
6. If you do not receive an item that sold for less than your bid, assume we cancelled your bid because the piece of glass had below average color, manufacture problem, damage or was not listed correctly.
7. To receive price lists send: \$20 -- for this auction and next 7 auctions
\$5 -- for only this auction or individual auction (please specify)

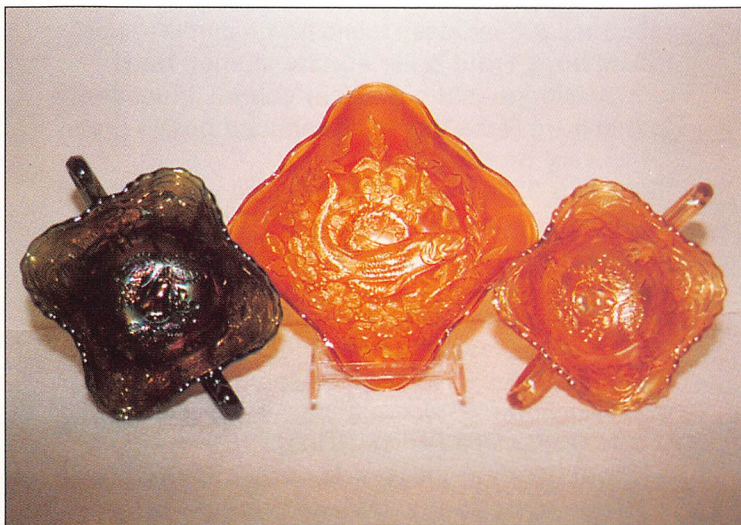
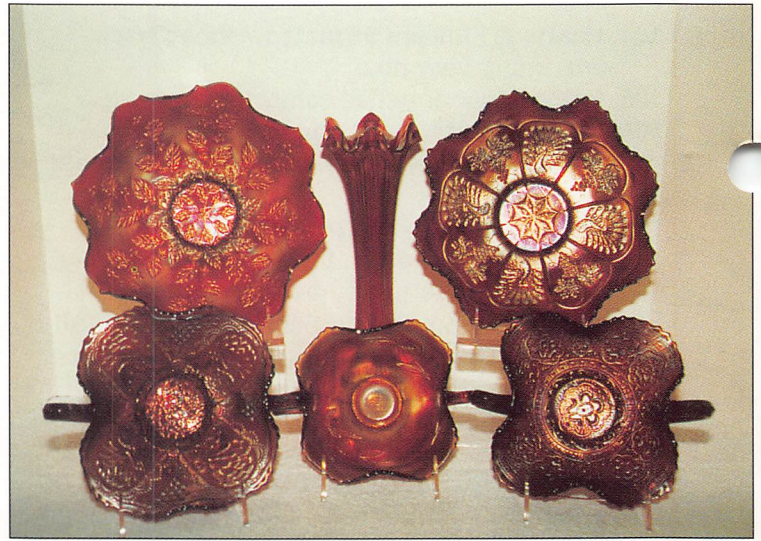
Send to the above address.

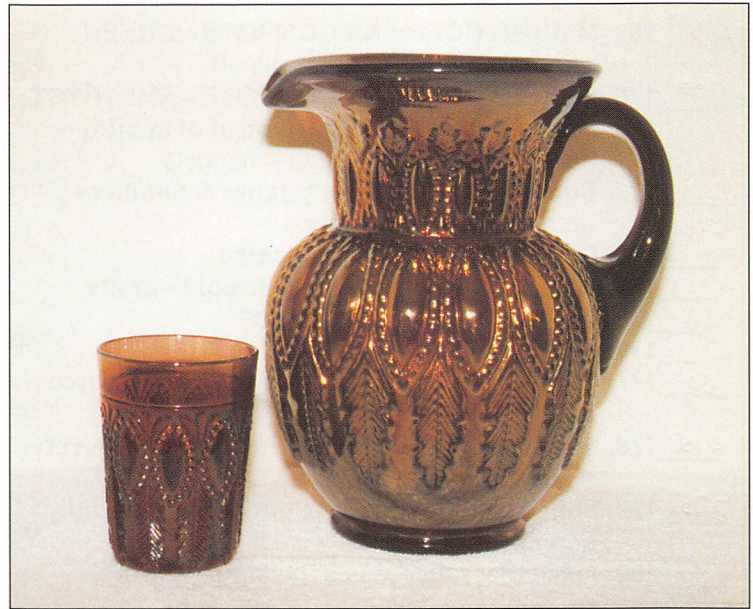
- | | |
|---|---|
| _____ 1. Vintage Band mug - marigold | _____ 21. M'burg Rays & Ribbons round bowl - marigold -
radium |
| _____ 2. Fine Cut & Roses candy dish - white | _____ 22. Fine Rib 9 1/2" vase - red - cherry & super, as
good as they get |
| _____ 3. Miniature Hobnail wine bottle w/stopper -
marigold | _____ 23. Poinsettia milk pitcher - marigold - pretty |
| _____ 4. Fenton handled tumble-up or desk set - marigold | 475 _____ 24. Embroidered Mums ruffled bowl w/ribbed
back - ice blue - very rare & desirable |
| _____ 5. M'burg Blackberry Wreath 6" ruffled sauce -
amethyst - radium & super | 650 _____ 25. Embroidered Mums ruffled bowl w/ribbed
back - blue |
| _____ 6. M'burg Blackberry Wreath 6" ruffled sauce -
marigold - radium | _____ 26. Peacock & Grape 9" plate - marigold - super |
| _____ 7. Pond Lily card tray shaped bon bon - marigold | _____ 27. M'burg Mayan IC shaped bowl - green - radium |
| _____ 8. Pond Lily card tray shaped bon bon - white -
chip on back of edge | 475 _____ 28. Basketweave Open Edge ruffled hat - cherry
red |
| _____ 9. Lattice & Daisy ruffled bowl - white | 375 _____ 29. Grape & Cable covered compote - purple -
scarce item |
| 1200 _____ 10. N's Peacock at Urn master IC bowl - blue -
stunning example, as nice as I have ever
seen, a SUPER DOOPER | _____ 30. M'burg Rays & Ribbons crimped edge ruffled
bowl - amethyst - radium |
| 155 115x2 95 _____ 11. N's Peacock at Urn indv. IC sauces (6) - blue
- just as nice as the big one, makes a great
set, choice | 4500 _____ 31. VINTAGE 9" 3 in 1 EDGE BOWL - RED -
extremely rare item, one of just a handful
known, a must for any red collector, nice |
| _____ 12. Grape & Cable butter dish - purple - pretty | _____ 32. M'burg Whirling Leaves ruffled bowl - green -
radium |
| _____ 13. Grape & Cable butter dish - marigold | _____ 33. M'burg Whirling Leaves ruffled bowl - amethyst -
radium |
| 450 _____ 14. M'burg Zig Zag square crimped edge bowl -
amethyst - radium, super tough piece to find | 500 _____ 34. Isaac Benesch & Sons ruffled adv. bowl -
amethyst |
| _____ 15. Grape & Cable sweetmeat - purple - pretty | _____ 35. Fashion water pitcher & tumbler - smoke -
very rare color in this pattern, nice, tumbler
sold separate |
| _____ 16. M'burg Rosalind Variant ruffled compote -
green - satin w/super irid., extremely rare | 115 115 _____ 36. Cherry Chain 6" plate - blue |
| _____ 17. Thistle banana boat - marigold | _____ 37. M'burg Peacock at Urn shotgun bowl w/3 in 1
edge - green - radium & super! |
| _____ 18. Seacoast pin tray - amethyst - rare, nice | _____ 38. Grape & Cable humidor - purple - roughness on
edge of lid & bottom |
| _____ 19. M'burg Strawberry Wreath 7 1/2" square bowl -
amethyst - radium & pretty | |
| 4750 _____ 20. M'BURG MANY STARS CHOP PLATE -
MARIGOLD - only one known in any color,
one of the top pieces in this sale, a once in a
lifetime opportunity | |



- 1200 39. N's Peacock at Urn master IC bowl - ice green - super irid., very nice
- 1050 40. N's Peacock at Urn master IC bowl - ice blue - super irid., also very nice
- 1200 41. N's Peacock at Urn master IC bowl - green - super rare, minor heat check in base
- 575 42. N's Peacock at Urn master IC bowl - white - very pretty
- 550 43. N's Peacock at Urn master IC bowl - amethyst
- 425 44. N's Peacock at Urn master IC bowl - dark marigold
- 325 45. N's Peacock at Urn master IC bowl - pastel marigold - lots of pink & blue irid.
46. Pillow & Sunburst ruffled bowl - peach opal
47. M'burg Boutonniere compote - marigold - radium
- 1200 48. M'burg Tracery square shaped 2 hdd bon bon - green - satin & rare, very seldom sold
- 1900 49. Waterlily ftd ruffled sauce - red - cherry & pretty, nice
50. M'burg Holly Sprig crimped edge sauce - marigold - radium & super
- 2250 51. Christmas compote - marigold - extremely rare, a collector's classic
52. Open Rose deep round bowl - purple
53. Open Rose deep round bowl - amber
54. M'burg Peacock at Urn mystery bowl - green - satin & super, a very pretty bowl
55. M'burg Rosalind large ruffled bowl - amethyst - satin & nice
56. M'burg Hanging Cherries round berry bowl - green - radium
- 450 57. Oriental Poppy tankard water pitcher & tumbler - marigold - nice, tumbler sold separate
- 85 58. Two Fruits divided bon-bon - marigold
- 1600 59. Two Flowers ftd chop plate - marigold - super nice
- 1300 60. Stag & Holly ftd chop plate - marigold - super
61. Acanthus deep round bowl - green
- 6000 62. Peter Rabbit 9" plate - marigold - extremely rare, just a few known, very pretty
- 205 63. M'burg Peacock Tail Variant ruffled compote - amethyst - radium
- 750 64. Panther ftd ruffled sauce - red - fairly flat
65. M'burg Holly Sprig 7" ruffled bowl - amethyst - radium
66. Peacock at the Fountain water pitcher & tumbler - blue - very nice, tumbler sold separate
- 475 67. Peacock at the Fountain water pitcher & tumbler - purple - very pretty & harder to get than the blue, tumbler sold separate
- 55 68. Grape & Cable spt ftd ruffled bowl w/Meander back - green
- 1300 69. Garden Path 10" IC shaped bowl - purple - super! a fabulous piece of glass
70. Grape & Cable cup & saucer - purple
- 1000 71. Embroidered Mums 9" plate w/ribbed back - ice green - super irid., minor nick on base, a very rare plate
72. Heisey cream & sugar - marigold
- 2350 73. Butterfly & Tulip square shaped ftd bowl - purple - super pretty, as nice as they get!
74. M'burg Blackberry Wreath ruffled sauce - marigold - satin
75. M'burg Trout & Fly IC shaped bowl - marigold - satin & super, a nice example
76. M'burg Trout & Fly IC shaped bowl - green - satin & nice, great shape
- 1900 77. Coin Dot ruffled bowl - red - cherry & super
78. N's Poppy pickle dish - blue - nice
79. Panelled Dandelion tankard water pitcher & tumbler - green - tumbler sold separate, outstanding color & iridescence, rare
80. Panelled Dandelion tankard water pitcher & tumbler - marigold - could be rarer than the dark colors, tumbler sold separate
81. M'burg Holly Whirl ruffled bowl - marigold
- 2750 82. Rose Show 9" plate - emerald green - a dandy! true emerald, not many around
- 1650 83. Rose Show 9" plate - ice blue, very rare plate
- 1850 84. Rose Show 9" plate - blue - sought after
- 1050 85. Rose Show 9" plate - marigold, very nice
- 475 86. Rose Show 9" plate - white - chip on base
87. M'burg Grape Wreath Variant crimped edge sauce - green - radium
88. M'burg Whirling Leaves tri-corned crimped edge bowl - amethyst - radium, rare shape
89. Strawberry bon bon - red - some amberina, but nice
90. Strawberry bon bon w/strawberry in center - marigold - scarce w/strawberry
91. Thumbprint & Oval vase - marigold
92. Grape & Cable water pitcher & tumbler - green - harder color to get, nice, tumbler sold separate
93. Grape & Cable water pitcher & tumbler - purple - always in demand, tumbler sold separate
- 350 94. Grape & Cable water pitcher & tumbler - marigold - super dark & pretty, as nice as they get, tumbler sold separate
- 115 95. Constellation compote - white
- 1750 96. M'burg Courthouse IC shaped bowl - amethyst - radium & super, more rare than the ruffled
97. Rose Spray JIP shaped compote - white
- 2450 98. Luster Rose ftd ruffled fruit bowl - red - a super nice one, highly sought after piece
99. M'burg Blackberry Wreath 7" ruffled bowl - amethyst - radium
- 2550 100. Hearts & Flowers 9" plate w/ribbed back - ice blue - nice color & irid., extremely rare
- 2450 101. Hearts & Flowers 9" plate w/ribbed back - white - a dandy, pretty irid.
- 1850 102. Hearts & Flowers 9" plate w/ribbed back - green - very rare color
- 1250 103. Hearts & Flowers 9" plate w/ribbed back - amethyst - very pretty

- 900 104. Hearts & Flowers 9" plate w/ribbed back - marigold, very nice
105. Hobstar Flower ruffled compote - marigold
106. Singing Birds water pitcher & tumbler - amethyst - very nice & scarce, tumbler sold separate
107. Singing Birds water pitcher & tumbler - green - very scarce, tumbler sold separate
- 1650 108. Lotus & Grape ruffled bon bon - red - extremely rare to find this shape, beautiful!
109. Lotus & Grape bon bon - aqua - very scarce color, pretty
110. M'burg Blackberry Wreath large ruffled bowl - amethyst - radium & nice
111. M'BURG ROSALIND TALL JELLY COMPOTE - GREEN - radium irid., super! an incredible piece of glass!
- 4250 112. M'BURG ROSALIND TALL JELLY COMPOTE - AMETHYST - radium irid., all you can say is incredible!
113. Pansy ruffled bowl - purple - pretty
114. Hearts & Flowers ruffled bowl w/ribbed back - ice blue
115. Inverted Strawberry giant IC shaped compote - marigold - signed Near Cut, extremely rare
116. M'burg Peacock at Urn 3 in 1 edge mystery bowl - amethyst - radium
117. M'burg Rosalind 9" ruffled bowl - amethyst - satin & super, a very rare size for this piece
- 4750 118. STIPPLED THREE FRUITS 9" PLATE - AQUA OPAL - spectacular pastel, lots of opal, super iridescence, WOW!
119. Stippled Three Fruits 9" plate w/ribbed back - amethyst - scarce
120. Stippled Three Fruits 9" plate w/ribbed back - marigold - nice
121. Carolina Dogwood ruffled bowl - blue opal - very scarce & desirable
122. Carolina Dogwood ruffled bowl - peach opal
123. Greek Key tankard water pitcher - green - super nice
124. Greek Key tumblers (2) - green - choice
- 650 95 125. Greek Key tankard water pitcher & tumbler - marigold - very nice, tumbler sold separate
126. M'burg Grape Wreath 7" crimped edge bowl - marigold - radium
- 3500 127. Orange Tree ruffled bowl - red - very pretty example, a rare piece
128. M'burg Little Stars 7" ruffled bowl - amethyst - satin
- 725 129. M'burg Big Fish 3 in 1 edge bowl - amethyst - radium, a nice bowl in a rare shape
130. Horse Medallion JIP ftd bowl - marigold
- 1100 115 131. Grape Arbor tankard water pitcher & tumbler - ice blue - super nice example, tumbler sold separate, rare
132. Grape Arbor tankard water pitcher - white - small nick on inside lip
133. Grape Arbor tumblers (2) - white - choice
134. Grape & Cable cracker jar - marigold
- 1750 135. Stag & Holly spt ftd ruffled bowl - red - rare piece, very seldom sold
136. Unusual bowl in bride's basket frame - marigold - cute
- 1400 137. Peter Rabbit IC shaped bowl - blue - extremely rare & very seldom sold, a great piece of glass!
138. Dugan's Cherries ftd ruffled bowl w/enamelled flowers - peach opal
- 1700 139. Wishbone ftd ruffled bowl - ice green - pretty example, very rare
- 1200 140. Wishbone ftd ruffled bowl - ice blue - nice irid., good color, rare
141. Wishbone ftd ruffled bowl - white - very scarce & frosty
- 235 142. Wishbone ftd ruffled bowl - green
143. Wishbone ftd ruffled bowl - amethyst
144. Wishbone ftd ruffled bowl - marigold
- 3600 145. Rose Show Variant 9" plate - reninger blue - a super nice example! Rare!
146. Leaf Chain ruffled 7" bowl - red - large spot of epoxy on edge
147. Four Flowers Variant 9" plate - olive green
- 1700 148. Hearts & Flowers PCE bowl w/ribbed back - ice green - very pretty, rare in PCE
- 475 149. Hearts & Flowers PCE bowl w/ribbed back - marigold - lots of pinks
- 1150 150. Rising Sun water pitcher - blue - very rare pitcher, not owned by many
- 525 151. Rising Sun water pitcher - marigold - rare
152. Rising Sun tumbler - marigold - scarce
- 125 153. Rising Sun juice glass - marigold
154. M'burg Wild Rose kerosene lamp (6" base, 9 1/2" tall) - green - radium - a nice one, nick on inside bottom base
155. Three Fruits 9" plate w/plain back - purple - super color & iridescence
- 550 156. Blackberry Spray ruffled hat - red opal - very rare color & nice
157. Three Fruits 9" plate w/basketweave back - green - nice
- 2700 158. Holly ruffled bowl - red - super! irid. & color are great
159. Shell & Sand deep round bowl - purple - super
160. M'burg Trout & Fly square shaped bowl - marigold - satin w/super color & iridescence
161. M'burg Rosalind 10" IC shaped bowl - green - very pretty, satin
162. Twins 6" deep ruffled bowl - blue - a rare Imperial color, pretty
163. Kittens toothpick - blue - nice example, very scarce
164. Kittens toothpick - marigold
165. Captive Rose 9" plate - blue - scarce plate
166. Windflower 9" plate - blue - pretty
167. Windflower 9" plate - marigold
- 5250 168. M'BURG DOLPHINS COMPOTE - BLUE - outstanding piece of M'burg, super pretty, a rare opportunity to buy a rare piece!

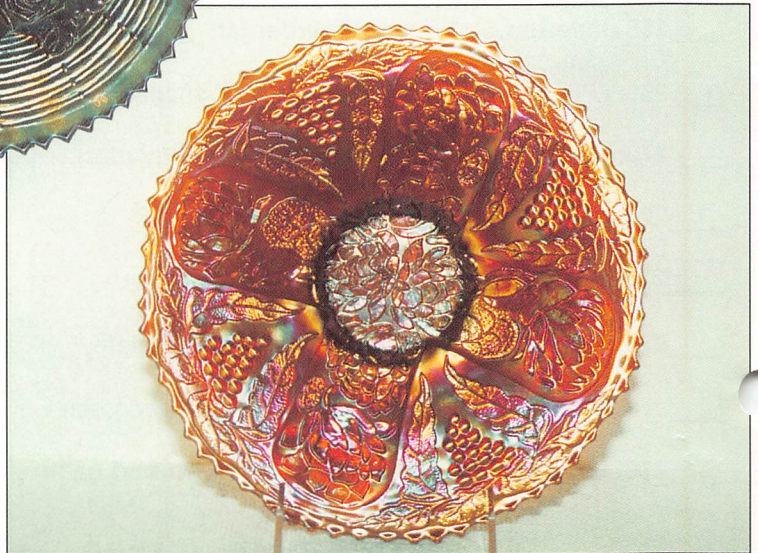
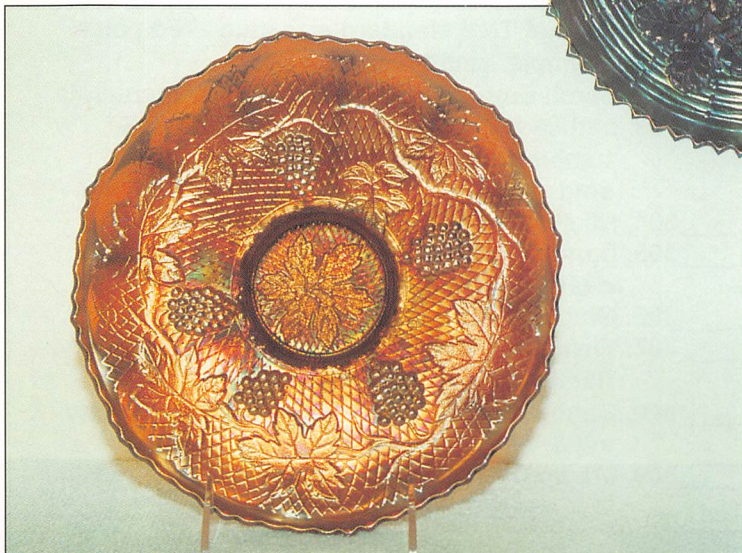
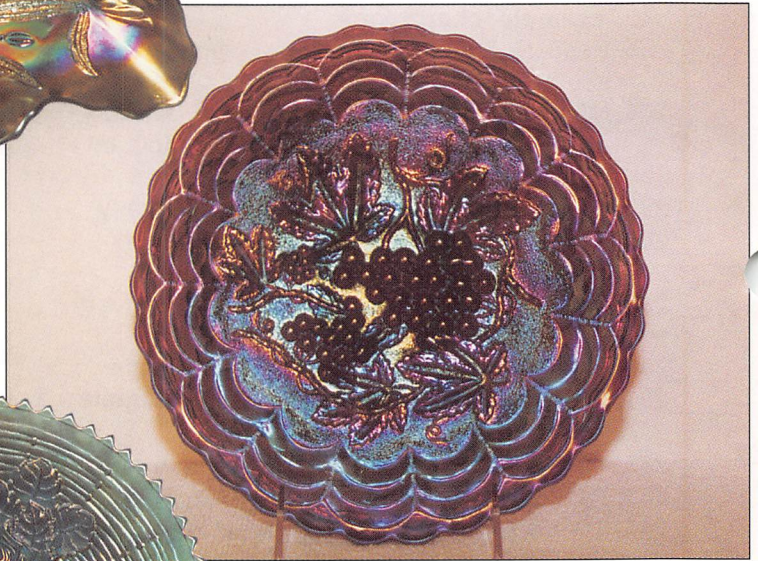
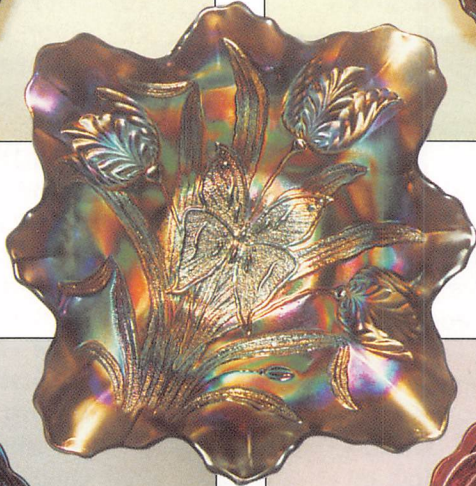




- 150⁰ 169. M'BURG DOLPHINS COMPOTE - GREEN - very rare, another great piece!
- 900 170. M'BURG DOLPHINS COMPOTE - AMETHYST - rough spots on edge, typical of M'burg
171. Persian Medallion 6" plate - marigold
172. Butterfly & Fern water pitcher & tumbler - amethyst - scarce & nice
173. Corn Vase - ice green - scarce
174. Amaryllis ftd flat plate - marigold - pretty
175. Leaf Chain 9" plate - clambroth
176. Leaf Chain 9" plate - green
- 650 177. Sunflower pin dish - amethyst - very scarce item, not often sold
- 415 178. Four Seventy Four milk pitcher - green - very scarce
- 375 179. Four Seventy Four milk pitcher - marigold - scarce
180. Apple Blossom Twigs 9" plate - amethyst - minor nick on point
- 3500 550 181. M'burg Perfection water pitcher & tumbler - amethyst - radium, a top M'burg water pitcher, tumbler sold separate
182. Strawberry 9" plate w/BW back - marigold
183. Rose Show ruffled bowl - aqua opal - minor nick on base
184. Rose Show ruffled bowl - amethyst - scarce
185. M'burg Fleur De Lis dome ftd IC shaped bowl - amethyst - super radium, minor nicks on the domed base
186. Horse Medallion 7" plate - marigold - small plates are hot
187. Western Thistle tumbler - blue - rare tumbler
188. Orange Tree loving cup - green - spectacular irid.
189. Orange Tree loving cup - blue - handle crack
190. Orange Tree loving cup - marigold - pastel
- 1700 191. Chrysanthemum ruffled bowl - red - extremely rare bowl
192. Open Rose ruffled bowl - purple - pretty
- 2600 193. Stippled Grape & Cable 9" plate w/ribbed back - sapphire blue - very rare item
- 1300 194. Stippled Grape & Cable 9" plate - blue - flat & very nice! rare
195. Cosmos & Cane collar based low ruffled 8" bowl - honey amber
- 2500 196. M'BURG WILDFLOWER JELLY COMPOTE - AMETHYST - radium & spectacular, RARE, RARE, RARE
- 900 197. Hearts & Flowers compote - ice green - nice, very rare
- 700 198. Hearts & Flowers compote - ice blue - nice irid., scarce
- 800 199. Hearts & Flowers compote - aqua opal - scarce
- 450 200. Hearts & Flowers compote - purple - scarce
- 475 201. Hearts & Flowers compotes (2) - blue - choice
- 215 202. Hearts & Flowers compote - marigold
- 225 203. Hearts & Flowers compote - white
204. Dugan's Cherries 8 ruffled bowl - peach opal
205. M'burg Peacock Whimsey proof sauce - marigold - missing his leg
- 700 206. Mary Ann 3 hdd vase - marigold - very rare w/3 handles, nice
207. Stippled Rays 6" plate - blue
208. Fenton's Grape & Cable deep round bowl - cherry red - unusual to find no amberina
209. Heart & Vine 9" plate - blue - very pretty
210. Peacocks PCE bowl w/ribbed exterior - marigold - scarce
211. Good Luck PCE bowl w/BW - green - nice
212. Grape & Cable 9" plate w/BW back - green
213. Grape & Cable 9" plate w/BW back - purple
- 800 214. M'burg Hobnail swirl spittoon - amethyst - very nice
215. Grape & Cable 9" plate w/plain back - marigold
- 2100 216. Dragon & Lotus ruffled bowl - red - very scarce & desirable
217. Imperial Grape water pitcher - aqua - very, very rare color, has some buffing on base
- 425 50 218. Imperial Grape water pitcher & tumbler - purple - super color, tumbler sold separate
219. Classic Arts rose bowl - marigold - rare item
220. Classic Arts large tumbler, or small vase - marigold - very rare
221. M'burg Blackberry Wreath crimped edge sauce - marigold - radium & neat
- 2700 222. M'BURG POPPY FLATTENED OUT COMPOTE - AMETHYST - spectacular radium irid., as nice as you can imagine
- 1600 223. M'BURG POPPY FLATTENED OUT COMPOTE - GREEN - just like the amethyst, fantastic!
224. Petal & Fan low ruffled bowl - peach opal
- 3100 225. M'burg 1910 Detroit Elks 3 in 1 edge bowl - amethyst - radium - super rare w/super color, minor buff on edge, hard to find the spot
226. Brooklyn Bridge 10 ruffled bowl - marigold
227. Holly ruffled hat - red - cherry & pretty
228. Fanciful 9" plate - blue - a nice one
229. Fanciful 9" plate - marigold
230. Plume Panels 10" vase - red - very rare vase, cherry & nice
231. Four Flowers large ruffled bowl - purple - pretty
232. Imperial Jewels candlesticks - red - cherry as can be
233. Wicker Work 8" plate - marigold
234. Peacock at Urn 9" plate - blue - very nice
235. Peacock at Urn 9" plate - marigold - dark & dandy
236. Imperial Grape 6" plate - purple - pretty
237. Leaf & Little Flowers ruffled compote - amethyst - radium, very scarce
238. Leaf & Little Flowers sherbert shaped compote - green - satin
239. Leaf & Little Flowers sherbert shaped compote - marigold - radium & nice
240. Concord 9" plate - amethyst - extremely rare plate & nice! in high demand

- ___ 241. Ribbon Tie ruffled plate - marigold
- ___ 242. Peacock 9" plate w/ribbed back - ice blue - dark w/nice irid., very rare
- ___ 243. Peacock 9" plate w/ribbed back - green - extremely rare & very nice
- ___ 244. Peacock 9" plate w/ribbed back - blue - in high demand
- ___ 245. Peacock 9" plate w/ribbed back - amethyst - pretty
- ___ 246. Peacock 9" plate w/ribbed back - marigold - super pretty pink irid.
- ___ 247. Peacock 9" plate w/ribbed back - ice green
- ___ 248. Peacock 9" plate w/ribbed back - white - pretty
- ___ 249. Roccoco vase - smoke - pretty
- ___ 250. Heavy Iris Tankard water pitcher - white - lots of mult-color irid., rare!
- ___ 251. Heavy Iris tumblers (2) - white - choice
- ___ 252. Heavy Iris tankard water pitcher & tumbler - marigold - tumbler sold separate
- ___ 253. Imperial Grape water bottle - purple
- ___ 254. Peacock & Grape ruffled bowl - red - nice example, cherry, rare
- ___ 255. Peacock & Grape ruffled bowl - lime green - pretty, edge did not fill out when made
- ___ 256. M'BURG PRIMROSE 3 in 1 EDGE BOWL - BLUE - only one known in this shape, a M'burg collector's dream
- ___ 257. Imperial Grape ruffled bowl - purple - pretty
- ___ 258. Tornado vase, small size - purple - very scarce & desirable, getting tougher
- ___ 259. Poppy Show ruffled bowl - marigold - very good example
- ___ 260. Three Fruits dome ftd ruffled bowl - purple
- ___ 261. Wishbone epergne - green - pretty & quite scarce
- ___ 262. Wishbone epergne - amethyst - also pretty
- ___ 263. Four Flowers 6" plate - peach opal - nice
- ___ 264. Stag & Holly 9" spt ftd plate - marigold - rare & nice
- ___ 265. Acanthus chop plate - smoke - dark, a nice example
- ___ 266. Acanthus chop plate - marigold - also nice
- ___ 267. M'burg Vintage w/Hobnail back IC shaped bowl - marigold - satin & nice
- ___ 268. Inverted Strawberry powder jar - green - a scarce powder jar
- ___ 269. M'burg Hanging Cherries large IC shaped bowl - marigold - satin & nice
- ___ 270. Open Rose 9" plate - purple - spectacular! blue irid., as nice as I've seen
- ___ 271. Open Rose 9" plate - amber - very nice
- ___ 272. Open Rose 9" plate - green
- ___ 273. M'burg Peacock at Urn master IC bowl - amethyst - satin, minor rub on edge
- ___ 274. Coral 9" plate - marigold - very rare plate, seldom sold
- ___ 275. M'burg Holly Sprig tri-cornered 8" bowl - green - radium
- 1950 ___ 276. Hearts & Flowers ruffled bowl w/ribbed back

- green - super spectacular, a pretty example of this rare bowl
- 575 ___ 277. Hearts & Flowers ruffled bowl w/ribbed back - purple - scrumptous, manufacture peeling on base
- ___ 278. Blackberry Spray ruffled hat - red - cherry color, lacks irid.
- ___ 279. Dragon & Strawberry IC shaped bowl - marigold - very nice, rare & desirable
- ___ 280. Persian Garden 6" plate - marigold
- ___ 281. Holly goblet shaped compote - red - rare
- ___ 282. Holly & Berry ruffled bowl - peach opal
- ___ 283. Good Luck 9" plate w/BW back - purple - always desirable
- ___ 284. Good Luck 9" plate w/BW back - marigold - scarce
- ___ 285. Field Thistle 6" plate - marigold - very scarce
- ___ 286. Homestead chop plate - purple - signed NUART & fantastic, a great chop plate
- ___ 287. Octagon 7 piece wine set - marigold - stopper has some damage
- ___ 288. Lattice & Poinsettia ftd ruffled bowl - ice blue - a nice example, extremely rare & desirable
- ___ 289. M'burg Nesting Swan ruffled bowl - amethyst - radium & super
- ___ 290. Question Mark ftd plate - amethyst - scarce
- ___ 291. M'burg Night Stars 2 hldd bon bon - olive green - radium & very rare
- ___ 292. M'burg Night Stars 2 hldd bon bon - marigold - radium & fantastic, very rare
- ___ 293. Stippled Rays IC shaped bowl - red - cherry & super
- ___ 294. Cherry Chain large size ruffled bowl - marigold
- ___ 295. Poppy Show 9" plate - green - minor buffing on base, very rare
- ___ 296. Poppy Show 9" plate - blue - minor chip off poppy, very nice
- ___ 297. Poppy Show 9" plate - ice blue - very nice! rare & desirable
- ___ 298. Poppy Show 9" plate - purple - very nice! very rare
- ___ 299. Poppy Show 9" plate - marigold - nice
- ___ 300. M'burg Primrose ruffled bowl - amethyst - radium
- ___ 301. Orange Tree standard size mug - red - nice example, small nick on base
- ___ 302. Scroll Embossed 9" plate - purple - incredible
- ___ 303. Lattice & Grape tankard water pitcher & tumbler - blue - very scarce, tumbler sold separate
- ___ 304. Nautilus sugar - purple - scarce
- ___ 305. Dandelion mug - aqua opal - very scarce & desirable, butterscotch & nice
- ___ 306. Grape & Cable PCE bowl w/plain back - green
- ___ 307. Wishbone 9" ftd plate - purple - super pretty, flat & nice
- ___ 308. Double Scroll console set - red - very pretty set & very hard to find
- ___ 309. M'burg Cosmos IC shaped sauce - green - radium



- ___ 310. M'burg Hobnail rosebowl - amethyst - nice
- ___ 311. M'burg Hobnail rosebowl - marigold
- ___ 312. Daisy Wreath IC shaped bowl - marigold - has anyone seen one of these before?
- ___ 313. Four Flowers chop plate - peach opal
- ___ 314. Blackberry Spray square hat - red - cherry & nice
- ___ 315. Peacock at Urn ruffled compote - red - dark, prettier than most
- ___ 316. Fisherman's Mug - amethyst - nice
- ___ 317. M'burg Deep Grape compote - green - satin, super color & iridescence, very rare!
- ___ 318. M'burg Deep Grape compote - marigold - satin, very pretty, rare & desirable
- ___ 319. Wine & Roses wine glass - aqua
- ___ 320. M'burg Trout & Fly 3 in 1 edge bowl - amethyst - satin & nice
- ___ 321. Floral & Optic ftd round bowl - red - stretchy
- ___ 322. Floral & Optic ftd round bowl - marigold on milk glass
- ___ 323. Dahlia water pitcher - amethyst - rare
- ___ 324. Dahlia tumblers (2) - amethyst - choice
- ___ 325. File & Fan ruffled compote - marigold on milk glass
- ___ 326. Wide Panel Epergne - green - rare epergne, very desirable & pretty, minor roughness around holes
- ___ 327. M'burg Peacock at Urn ruffled bowl - green - satin, silvery
- ___ 328. M'burg Fleur De Lis dome ftd tri-cornered crimped edge bowl - marigold - radium
- ___ 329. Grape & Cable breakfast set - purple
- ___ 330. Imperial Grape 9" plate - purple - spectacular!, super irid. & rare!
- ___ 331. M'burg Blackberry Wreath 3 in 1 edge sauce - green - satin
- ___ 332. Acorn IC shaped bowl - red - very pretty example, one of the nicer I've seen
- ___ 333. Acorn ruffled bowl - red - a little to the brick side, but has pretty irid.
- ___ 334. Kittens ruffled bowl - marigold - 2 sets of kittens
- ___ 335. Kittens cup & saucer - marigold
- ___ 336. Lotus & Grape 9" plate - amethyst - extremely beautiful & RARE!
- ___ 337. M'burg Blackberry Wreath 9" ruffled bowl - marigold - satin & dark
- ___ 338. Inverted Strawberry creamer - green - pretty, signed Near Cut
- ___ 339. Round Up 9" plate - peach opal - nice opal
- ___ 340. Round-Up 9" plate - blue - pinpoint on edge
- ___ 341. Stippled Peacock 9" plate w/ribbed back - blue - pretty
- ___ 342. Floral & Optic ftd chop plate - red - minor spot on one foot, extremely rare & pretty
- ___ 343. Floral & Optic cake plate - marigold
- ___ 344. M'burg Roses & Fruits 2 hldd ftd bon bon - marigold - super pretty satin, very rare
- ___ 345. M'burg Roses & Fruits 2 hldd ftd bon bon - green - super pretty radium, rare
- ___ 346. M'burg Blackberry Wreath 3 in 1 edge sauce - green - radium, nice
- ___ 347. Persian Medallion bon bon - red
- ___ 348. Orange Tree 9" plate - blue - a stunner!
- ___ 349. Orange Tree 9" plate - white - pretty example
- ___ 350. Orange Tree 9" plate - marigold
- ___ 351. M'BURG ACORN JELLY COMPOTE - MARIGOLD - radium, only one known in marigold, a fantastic piece of M'burg
- ___ 352. M'burg Holly Sprig card tray shaped bon-bon - marigold -satin
- ___ 353. M'burg Holly Sprig card tray shaped bon-bon - green - radium & pretty
- ___ 354. Florentine large size candlesticks - red - very pretty & rare
- ___ 355. Nippon PCE bowl - green - much rarer than the pastels, nice
- ___ 356. Nippon PCE bowl - ice blue
- ___ 357. Holly 9" plate - green - nice, rare & desirable
- ___ 358. Holly 9" plate - blue - super
- ___ 359. Holly 9" plate - marigold
- ___ 360. Victorian ruffled bowl - purple - spectacular color for this piece, flat, almost square shaped, the best one I've seen, minor spot on back edge
- ___ 361. Flowers & Frames domed ftd ruffled bowl - peach opal
- ___ 362. Inverted Strawberry spittoon - marigold - signed Near Cut, nice
- ___ 363. M'burg Diamonds water pitcher - green - very nice example
- ___ 364. M'burg Diamonds water pitcher - amethyst - chip on base
- ___ 365. Grape & Cable pin dish - purple - very scarce & nice
- ___ 366. Open Rose rosebowl - amber
- ___ 367. Grape & Cable tankard pitcher - marigold - very scarce pitcher
- ___ 368. Stippled Grape & Cable ruffled bowl w/ribbed back - green - very scarce stippled
- ___ 369. Fishscale & Beads ruffled bowl - marigold
- ___ 370. M'burg Many Stars 10" IC shaped bowl (5 point star) - green - radium & super!
- ___ 371. M'burg Grape Wreath 3 in 1 edge 7" bowl - amethyst - radium, pretty
- ___ 372. Pinecone 6" plate - green - a hot item, nice
- ___ 373. Kittens two sides up dish - blue - scarce
- ___ 374. N's Lovely tri-cornered ftd bowl - purple - super pretty, very rare & desirable
- ___ 375. Peacocks ruffled bowl w/ribbed back - aqua opal - very nice
- ___ 376. Fenton's Flowers rosebowl - red - feet have damage, is your's perfect? very pretty
- ___ 377. Illinois Soldiers & Sailors 9" plate - blue - very nice example, rare
- ___ 378. Hobstar Band ruffled bowl - marigold
- ___ 379. Flute & Clear cream and sugar - white stretch
- ___ 380. Wide Panel 8 1/4" plate - red
- ___ 381. Wide Panel 8 1/4" plate - white
- ___ 382. Frosted Block 9" plate - clambroth
- ___ 383. Tumble Up - marigold

Seeck Auctions

P.O. Box 377
Mason City, Iowa 50402



FIRST CLASS

