

H.O.A.C.G.A. Convention

AUCTION

Bob & Faye Allaire Collection



Saturday, April 27, 1996 – 9:30 A.M.
Holiday Inn – Lenexa, Kansas
I-35 & 95th Street

Seeck Auctions

JIM & JAN SEECK

515-424-1116

H.O.A.C.G.A Convention Auction

Saturday, April 27, 1996 -- 9:30 A.M.

The Heart of America convention goers are in for a treat this year. With the help of Bob and Faye Allaire of Texas, they are going to have one of the best convention auctions they have ever had! Bob and Faye have decided to sell their fantastic collection of Carnival Glass to the highest bidder. Rare Millersburg, rare plates, red, I could go on forever. What a great opportunity to buy some premier pieces of carnival glass. Make attendance to this convention a priority this year. It will be worth it!

Call 913-888-6670 or 800-527-0582 for reservations: Please specify that you are with the HOACGA Convention.

H.O.A.C.G.A. Convention information: Contact HOACGA president Robert Grissom at (816)356-5320.

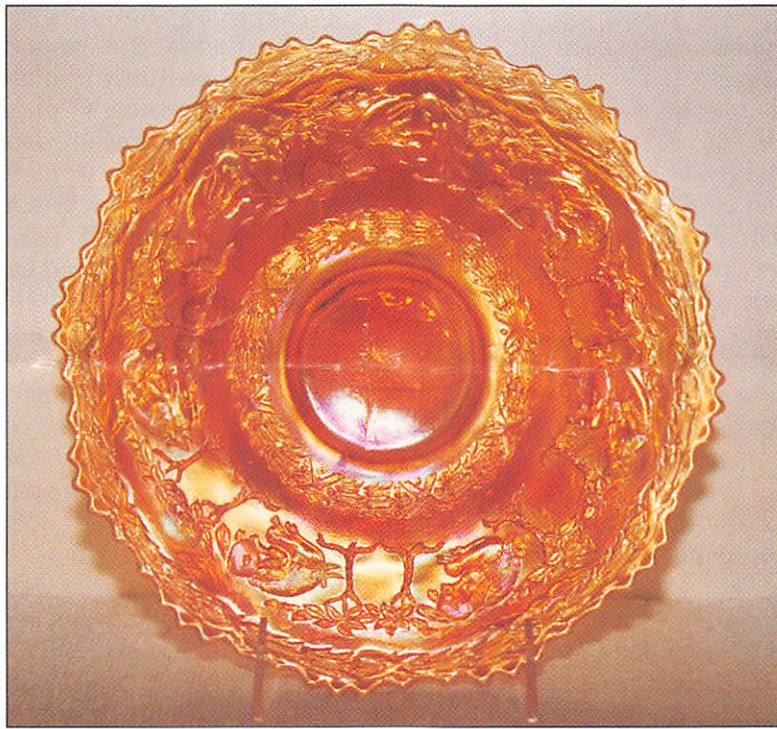
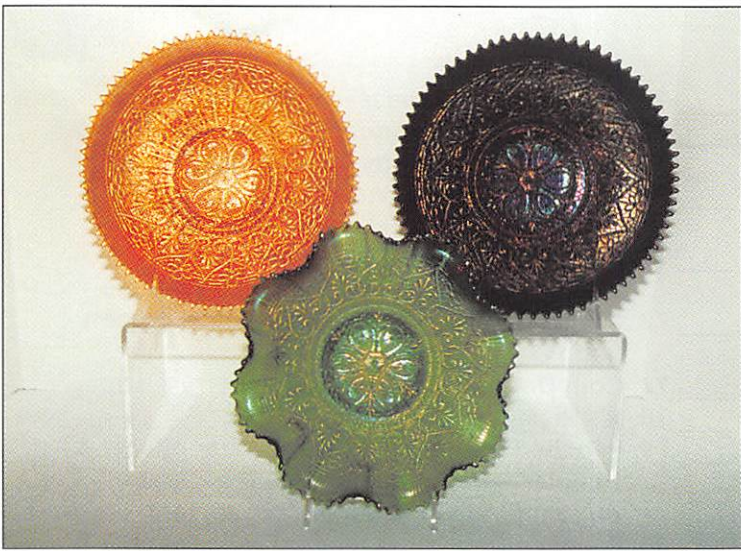
Preview: Friday evening.

WRITE-IN BID POLICY

1. Write-in bids will be accepted by sending the numbers of the item(s) desired and the amount bid on each to:
Seeck Auctions, PO Box 377, Mason City, Iowa 50402.
2. If known by Auction Company, bids may be done over the telephone. (515)424-1116.
3. There is a \$5 handling charge for each successful bid. Shipping and insurance charges are additional.
4. Bidders will be notified by a phone call if their bid(s) are successful. This call will be made 1 - 3 days after the auction is over.
5. Please have all bids in by Wednesday, April 24th. All bids (by mail or phone) after this date may not be carried out.
6. If you do not receive an item that sold for less than your bid, assume we cancelled your bid because the piece of glass had below average color, manufacture problem, damage or was not listed correctly.
7. To receive price lists send: \$20 -- for this auction and next 7 auctions
\$5 -- for only this auction or individual auction (please specify)

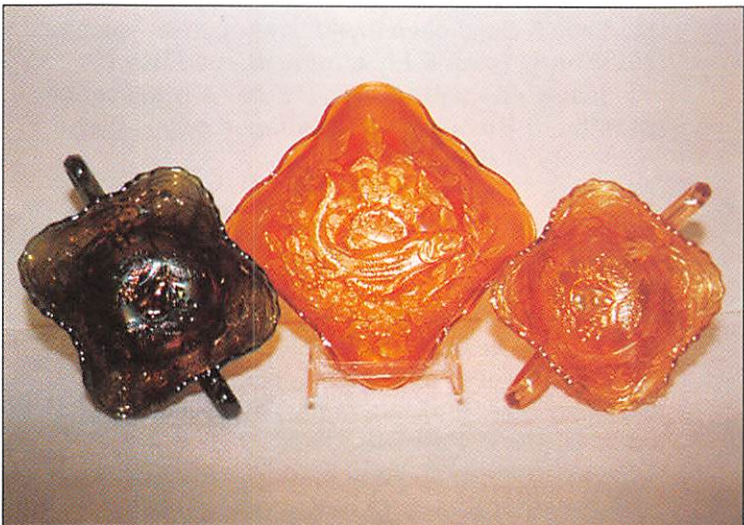
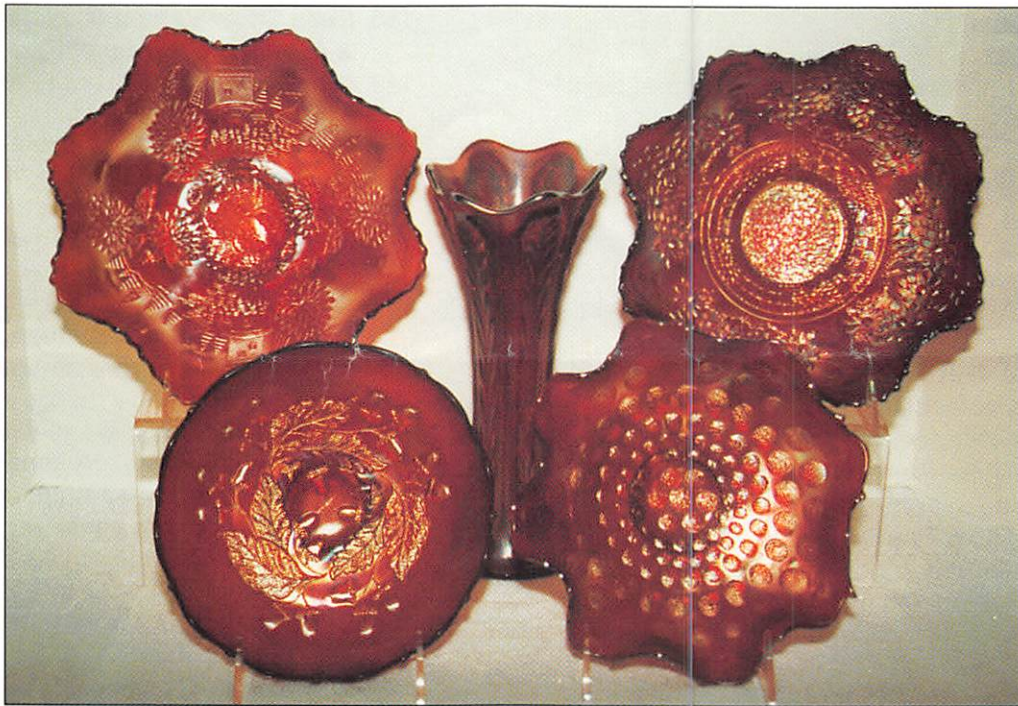
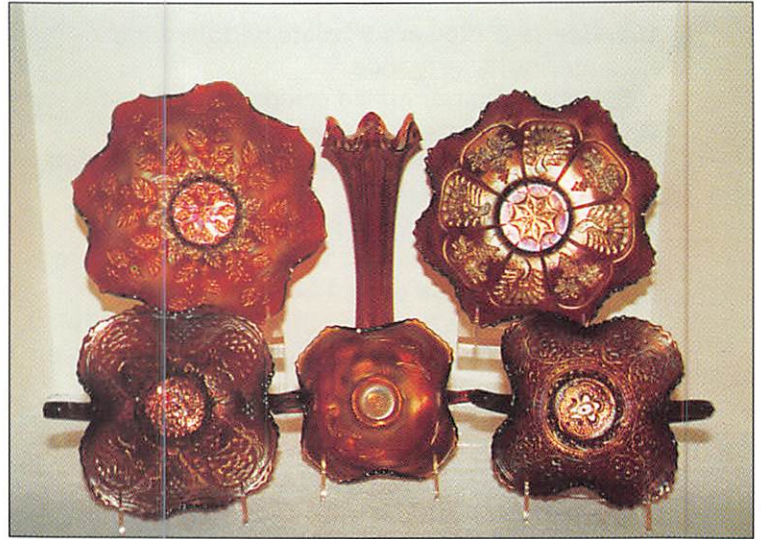
Send to the above address.

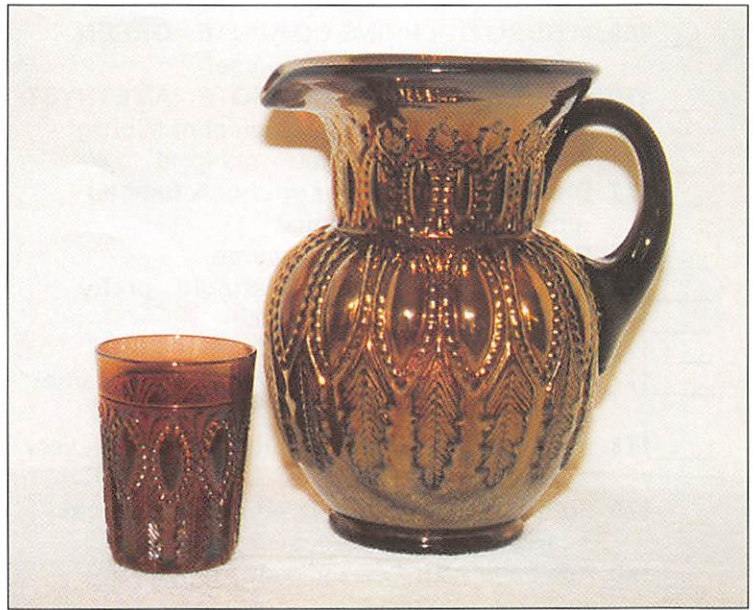
- | | |
|---|--|
| ___ 1. Vintage Band mug - marigold | ___ 21. M'burg Rays & Ribbons round bowl - marigold - radium |
| ___ 2. Fine Cut & Roses candy dish - white | ___ 22. Fine Rib 9 1/2" vase - red - cherry & super, as good as they get |
| ___ 3. Miniature Hobnail wine bottle w/stopper - marigold | ___ 23. Poinsettia milk pitcher - marigold - pretty |
| ___ 4. Fenton handled tumble-up or desk set - marigold | ___ 24. Embroidered Mums ruffled bowl w/ribbed back - ice blue - very rare & desirable |
| ___ 5. M'burg Blackberry Wreath 6" ruffled sauce - amethyst - radium & super | ___ 25. Embroidered Mums ruffled bowl w/ribbed back - blue |
| ___ 6. M'burg Blackberry Wreath 6" ruffled sauce - marigold - radium | ___ 26. Peacock & Grape 9" plate - marigold - super |
| ___ 7. Pond Lily card tray shaped bon bon - marigold | ___ 27. M'burg Mayan IC shaped bowl - green - radium |
| ___ 8. Pond Lily card tray shaped bon bon - white - chip on back of edge | ___ 28. Basketweave Open Edge ruffled hat - cherry red |
| ___ 9. Lattice & Daisy ruffled bowl - white | ___ 29. Grape & Cable covered compote - purple - scarce item |
| ___ 10. N's Peacock at Urn master IC bowl - blue - stunning example, as nice as I have ever seen, a SUPER DOOPER | ___ 30. M'burg Rays & Ribbons crimped edge ruffled bowl - amethyst - radium |
| ___ 11. N's Peacock at Urn indiv. IC sauces (6) - blue - just as nice as the big one, makes a great set, choice | ___ 31. VINTAGE 9" 3 in 1 EDGE BOWL - RED - extremely rare item, one of just a handful known, a must for any red collector, nice |
| ___ 12. Grape & Cable butter dish - purple - pretty | ___ 32. M'burg Whirling Leaves ruffled bowl - green - radium |
| ___ 13. Grape & Cable butter dish - marigold | ___ 33. M'burg Whirling Leaves ruffled bowl - amethyst - radium |
| ___ 14. M'burg Zig Zag square crimped edge bowl - amethyst - radium, super tough piece to find | ___ 34. Isaac Benesch & Sons ruffled adv. bowl - amethyst |
| ___ 15. Grape & Cable sweetmeat - purple - pretty | ___ 35. Fashion water pitcher & tumbler - smoke - very rare color in this pattern, nice, tumbler sold separate |
| ___ 16. M'burg Rosalind Variant ruffled compote - green - satin w/super irid., extremely rare | ___ 36. Cherry Chain 6" plate - blue |
| ___ 17. Thistle banana boat - marigold | ___ 37. M'burg Peacock at Urn shotgun bowl w/3 in 1 edge - green - radium & super! |
| ___ 18. Seacoast pin tray - amethyst - rare, nice | ___ 38. Grape & Cable humidor - purple - roughness on edge of lid & bottom |
| ___ 19. M'burg Strawberry Wreath 7 1/2" square bowl - amethyst - radium & pretty | |
| ___ 20. M'BURG MANY STARS CHOP PLATE - MARIGOLD - only one known in any color, one of the top pieces in this sale, a once in a lifetime opportunity | |



- ___ 39. N's Peacock at Urn master IC bowl - ice green - super irid., very nice
- ___ 40. N's Peacock at Urn master IC bowl - ice blue - super irid., also very nice
- ___ 41. N's Peacock at Urn master IC bowl - green - super rare, minor heat check in base
- ___ 42. N's Peacock at Urn master IC bowl - white - very pretty
- ___ 43. N's Peacock at Urn master IC bowl - amethyst
- ___ 44. N's Peacock at Urn master IC bowl - dark marigold
- ___ 45. N's Peacock at Urn master IC bowl - pastel marigold - lots of pink & blue irid.
- ___ 46. Pillow & Sunburst ruffled bowl - peach opal
- ___ 47. M'burg Boutonniere compote - marigold - radium
- ___ 48. M'burg Tracery square shaped 2 hldd bon bon - green - satin & rare, very seldom sold
- ___ 49. Waterlily ftd ruffled sauce - red - cherry & pretty, nice
- ___ 50. M'burg Holly Sprig crimped edge sauce - marigold - radium & super
- ___ 51. Christmas compote - marigold - extremely rare, a collector's classic
- ___ 52. Open Rose deep round bowl - purple
- ___ 53. Open Rose deep round bowl - amber
- ___ 54. M'burg Peacock at Urn mystery bowl - green - satin & super, a very pretty bowl
- ___ 55. M'burg Rosalind large ruffled bowl - amethyst - satin & nice
- ___ 56. M'burg Hanging Cherries round berry bowl - green - radium
- ___ 57. Oriental Poppy tankard water pitcher & tumbler - marigold - nice, tumbler sold separate
- ___ 58. Two Fruits divided bon-bon - marigold
- ___ 59. Two Flowers ftd chop plate - marigold - super nice
- ___ 60. Stag & Holly ftd chop plate - marigold - super
- ___ 61. Acanthus deep round bowl - green
- ___ 62. Peter Rabbit 9" plate - marigold - extremely rare, just a few known, very pretty
- ___ 63. M'burg Peacock Tail Variant ruffled compote - amethyst - radium
- ___ 64. Panther ftd ruffled sauce - red - fairly flat
- ___ 65. M'burg Holly Sprig 7" ruffled bowl - amethyst - radium
- ___ 66. Peacock at the Fountain water pitcher & tumbler - blue - very nice, tumbler sold separate
- ___ 67. Peacock at the Fountain water pitcher & tumbler - purple - very pretty & harder to get than the blue, tumbler sold separate
- ___ 68. Grape & Cable spt ftd ruffled bowl w/Meander back - green
- ___ 69. Garden Path 10" IC shaped bowl - purple - super! a fabulous piece of glass
- ___ 70. Grape & Cable cup & saucer - purple
- ___ 71. Embroidered Mums 9" plate w/ribbed back - ice green - super irid., minor nick on base, a very rare plate
- ___ 72. Heisey cream & sugar - marigold
- ___ 73. Butterfly & Tulip square shaped ftd bowl - purple - super pretty, as nice as they get!
- ___ 74. M'burg Blackberry Wreath ruffled sauce - marigold - satin
- ___ 75. M'burg Trout & Fly IC shaped bowl - marigold - satin & super, a nice example
- ___ 76. M'burg Trout & Fly IC shaped bowl - green - satin & nice, great shape
- ___ 77. Coin Dot ruffled bowl - red - cherry & super
- ___ 78. N's Poppy pickle dish - blue - nice
- ___ 79. Panelled Dandelion tankard water pitcher & tumbler - green - tumbler sold separate, outstanding color & iridescence, rare
- ___ 80. Panelled Dandelion tankard water pitcher & tumbler - marigold - could be rarer than the dark colors, tumbler sold separate
- ___ 81. M'burg Holly Whirl ruffled bowl - marigold
- ___ 82. Rose Show 9" plate - emerald green - a dandy! true emerald, not many around
- ___ 83. Rose Show 9" plate - ice blue, very rare plate
- ___ 84. Rose Show 9" plate - blue - sought after
- ___ 85. Rose Show 9" plate - marigold, very nice
- ___ 86. Rose Show 9" plate - white - chip on base
- ___ 87. M'burg Grape Wreath Variant crimped edge sauce - green - radium
- ___ 88. M'burg Whirling Leaves tri-corned crimped edge bowl - amethyst - radium, rare shape
- ___ 89. Strawberry bon bon - red - some amberina, but nice
- ___ 90. Strawberry bon bon w/strawberry in center - marigold - scarce w/strawberry
- ___ 91. Thumbprint & Oval vase - marigold
- ___ 92. Grape & Cable water pitcher & tumbler - green - harder color to get, nice, tumbler sold separate
- ___ 93. Grape & Cable water pitcher & tumbler - purple - always in demand, tumbler sold separate
- ___ 94. Grape & Cable water pitcher & tumbler - marigold - super dark & pretty, as nice as they get, tumbler sold separate
- ___ 95. Constellation compote - white
- ___ 96. M'burg Courthouse IC shaped bowl - amethyst - radium & super, more rare than the ruffled
- ___ 97. Rose Spray JIP shaped compote - white
- ___ 98. Luster Rose ftd ruffled fruit bowl - red - a super nice one, highly sought after piece
- ___ 99. M'burg Blackberry Wreath 7" ruffled bowl - amethyst- radium
- ___ 100. Hearts & Flowers 9" plate w/ribbed back - ice blue - nice color & irid., extremely rare
- ___ 101. Hearts & Flowers 9" plate w/ribbed back - white - a dandy, pretty irid.
- ___ 102. Hearts & Flowers 9" plate w/ribbed back - green - very rare color
- ___ 103. Hearts & Flowers 9" plate w/ribbed back - amethyst - very pretty

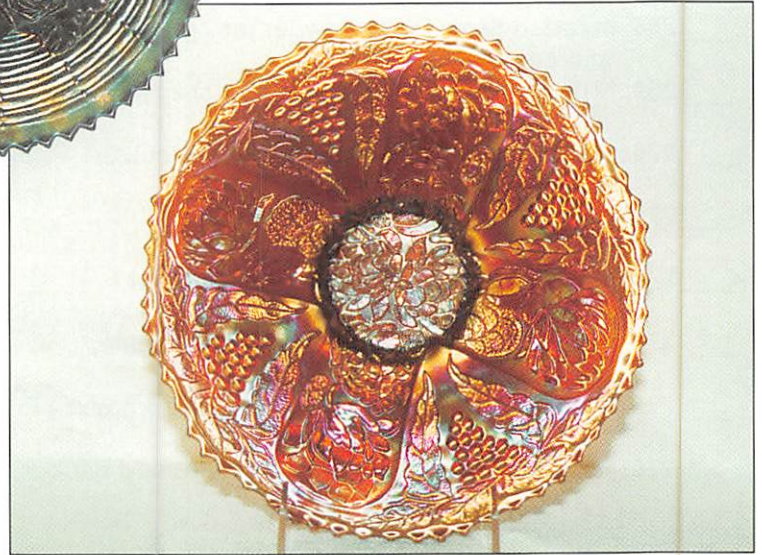
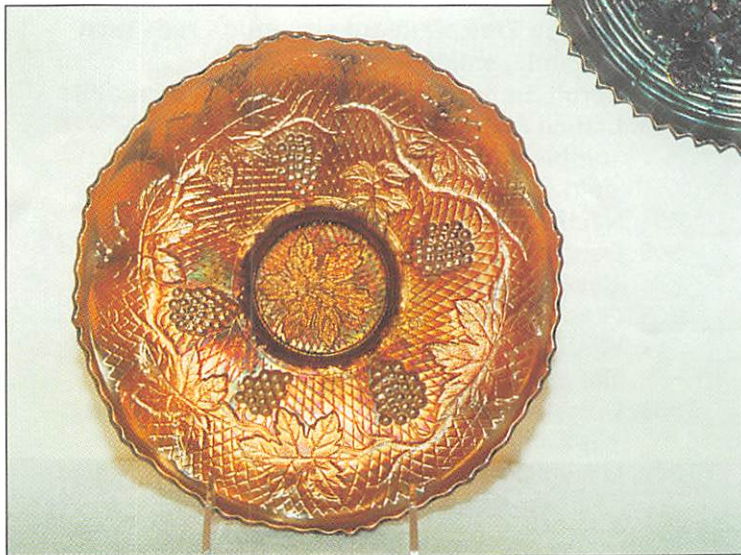
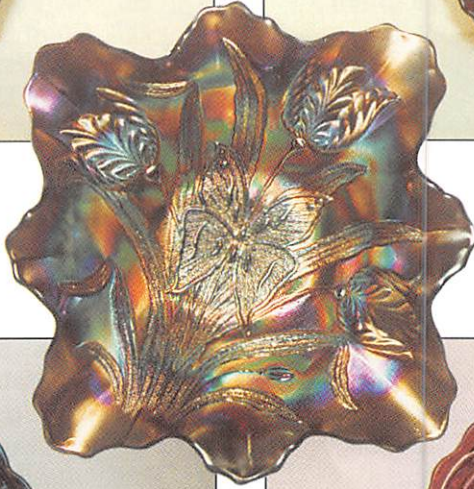
- ___ 104. Hearts & Flowers 9" plate w/ribbed back - marigold, very nice
- ___ 105. Hobstar Flower ruffled compote - marigold
- ___ 106. Singing Birds water pitcher & tumbler - amethyst - very nice & scarce, tumbler sold separate
- ___ 107. Singing Birds water pitcher & tumbler - green - very scarce , tumbler sold separate
- ___ 108. Lotus & Grape ruffled bon bon - red - extremely rare to find this shape, beautiful!
- ___ 109. Lotus & Grape bon bon - aqua - very scarce color, pretty
- ___ 110. M'burg Blackberry Wreath large ruffled bowl - amethyst - radium & nice
- ___ 111. M'BURG ROSALIND TALL JELLY COMPOTE - GREEN - radium irid., super! an incredible piece of glass!
- ___ 112. M'BURG ROSALIND TALL JELLY COMPOTE - AMETHYST - radium irid., all you can say is incredible!
- ___ 113. Pansy ruffled bowl - purple - pretty
- ___ 114. Hearts & Flowers ruffled bowl w/ribbed back - ice blue
- ___ 115. Inverted Strawberry giant IC shaped compote - marigold - signed Near Cut, extremely rare
- ___ 116. M'burg Peacock at Urn 3 in 1 edge mystery bowl - amethyst - radium
- ___ 117. M'burg Rosalind 9" ruffled bowl - amethyst - satin & super, a very rare size for this piece
- ___ 118. STIPPLED THREE FRUITS 9" PLATE - AQUA OPAL - spectacular pastel, lots of opal, super iridescence, WOW!
- ___ 119. Stippled Three Fruits 9" plate w/ribbed back - amethyst - scarce
- ___ 120. Stippled Three Fruits 9" plate w/ribbed back - marigold - nice
- ___ 121. Carolina Dogwood ruffled bowl - blue opal - very scarce & desirable
- ___ 122. Carolina Dogwood ruffled bowl - peach opal
- ___ 123. Greek Key tankard water pitcher - green - super nice
- ___ 124. Greek Key tumblers (2) - green - choice
- ___ 125. Greek Key tankard water pitcher & tumbler - marigold - very nice, tumbler sold separate
- ___ 126. M'burg Grape Wreath 7" crimped edge bowl - marigold - radium
- ___ 127. Orange Tree ruffled bowl - red - very pretty example, a rare piece
- ___ 128. M'burg Little Stars 7" ruffled bowl - amethyst - satin
- ___ 129. M'burg Big Fish 3 in 1 edge bowl - amethyst - radium, a nice bowl in a rare shape
- ___ 130. Horse Medallion JIP ftd bowl - marigold
- ___ 131. Grape Arbor tankard water pitcher & tumbler - ice blue - super nice example, tumbler sold separate, rare
- ___ 132. Grape Arbor tankard water pitcher - white - small nick on inside lip
- ___ 133. Grape Arbor tumblers (2) - white - choice
- ___ 134. Grape & Cable cracker jar - marigold
- ___ 135. Stag & Holly spt ftd ruffled bowl - red - rare piece, very seldom sold
- ___ 136. Unusual bowl in bride's basket frame - marigold - cute
- ___ 137. Peter Rabbit IC shaped bowl - blue - extremely rare & very seldom sold, a great piece of glass!
- ___ 138. Dugan's Cherries ftd ruffled bowl w/enamelled flowers - peach opal
- ___ 139. Wishbone ftd ruffled bowl - ice green - pretty example, very rare
- ___ 140. Wishbone ftd ruffled bowl - ice blue - nice irid., good color, rare
- ___ 141. Wishbone ftd ruffled bowl - white - very scarce & frosty
- ___ 142. Wishbone ftd ruffled bowl - green
- ___ 143. Wishbone ftd ruffled bowl - amethyst
- ___ 144. Wishbone ftd ruffled bowl - marigold
- ___ 145. Rose Show Variant 9" plate - reninger blue - a super nice example! Rare!
- ___ 146. Leaf Chain ruffled 7" bowl - red - large spot of epoxy on edge
- ___ 147. Four Flowers Variant 9" plate - olive green
- ___ 148. Hearts & Flowers PCE bowl w/ribbed back - ice green - very pretty, rare in PCE
- ___ 149. Hearts & Flowers PCE bowl w/ribbed back - marigold - lots of pinks
- ___ 150. Rising Sun water pitcher - blue - very rare pitcher, not owned by many
- ___ 151. Rising Sun water pitcher - marigold - rare
- ___ 152. Rising Sun tumbler - marigold - scarce
- ___ 153. Rising Sun juice glass - marigold
- ___ 154. M'burg Wild Rose kerosene lamp (6" base, 9 1/2" tall) - green - radium - a nice one, nick on inside bottom base
- ___ 155. Three Fruits 9" plate w/plain back - purple - super color & iridescence
- ___ 156. Blackberry Spray ruffled hat - red opal - very rare color & nice
- ___ 157. Three Fruits 9" plate w/basketweave back - green - nice
- ___ 158. Holly ruffled bowl - red - super! irid. & color are great
- ___ 159. Shell & Sand deep round bowl - purple - super
- ___ 160. M'burg Trout & Fly square shaped bowl - marigold - satin w/super color & iridescence
- ___ 161. M'burg Rosalind 10" IC shaped bowl - green - very pretty, satin
- ___ 162. Twins 6" deep ruffled bowl - blue - a rare Imperial color, pretty
- ___ 163. Kittens toothpick - blue - nice example, very scarce
- ___ 164. Kittens toothpick - marigold
- ___ 165. Captive Rose 9" plate - blue - scarce plate
- ___ 166. Windflower 9" plate - blue - pretty
- ___ 167. Windflower 9" plate - marigold
- ___ 168. M'BURG DOLPHINS COMPOTE - BLUE - outstanding piece of M'burg, super pretty, a rare opportunity to buy a rare piece!





- ___ 169. M'BURG DOLPHINS COMPOTE - GREEN - very rare, another great piece!
- ___ 170. M'BURG DOLPHINS COMPOTE - AMETHYST - rough spots on edge, typical of M'burg
- ___ 171. Persian Medallion 6" plate - marigold
- ___ 172. Butterfly & Fern water pitcher & tumbler - amethyst - scarce & nice
- ___ 173. Corn Vase - ice green - scarce
- ___ 174. Amaryllis ftd flat plate - marigold - pretty
- ___ 175. Leaf Chain 9" plate - clambroth
- ___ 176. Leaf Chain 9" plate - green
- ___ 177. Sunflower pin dish - amethyst - very scarce item, not often sold
- ___ 178. Four Seventy Four milk pitcher - green - very scarce
- ___ 179. Four Seventy Four milk pitcher - marigold - scarce
- ___ 180. Apple Blossom Twigs 9" plate - amethyst - minor nick on point
- ___ 181. M'burg Perfection water pitcher & tumbler - amethyst - radium, a top M'burg water pitcher, tumbler sold separate
- ___ 182. Strawberry 9" plate w/BW back - marigold
- ___ 183. Rose Show ruffled bowl - aqua opal - minor nick on base
- ___ 184. Rose Show ruffled bowl - amethyst - scarce
- ___ 185. M'burg Fleur De Lis dome ftd IC shaped bowl - amethyst - super radium, minor nicks on the domed base
- ___ 186. Horse Medallion 7" plate - marigold - small plates are hot
- ___ 187. Western Thistle tumbler - blue - rare tumbler
- ___ 188. Orange Tree loving cup - green - spectacular irid.
- ___ 189. Orange Tree loving cup - blue - handle crack
- ___ 190. Orange Tree loving cup - marigold - pastel
- ___ 191. Chrysanthemum ruffled bowl - red - extremely rare bowl
- ___ 192. Open Rose ruffled bowl - purple - pretty
- ___ 193. Stippled Grape & Cable 9" plate w/ribbed back - sapphire blue - very rare item
- ___ 194. Stippled Grape & Cable 9" plate - blue - flat & very nice! rare
- ___ 195. Cosmos & Cane collar based low ruffled 8" bowl - honey amber
- ___ 196. M'BURG WILDFLOWER JELLY COMPOTE - AMETHYST - radium & spectacular, RARE, RARE, RARE
- ___ 197. Hearts & Flowers compote - ice green - nice, very rare
- ___ 198. Hearts & Flowers compote - ice blue - nice irid., scarce
- ___ 199. Hearts & Flowers compote - aqua opal - scarce
- ___ 200. Hearts & Flowers compote - purple - scarce
- ___ 201. Hearts & Flowers compotes (2) - blue - choice
- ___ 202. Hearts & Flowers compote - marigold
- ___ 203. Hearts & Flowers compote - white
- ___ 204. Dugan's Cherries 8 ruffled bowl - peach opal
- ___ 205. M'burg Peacock Whimsey proof sauce - marigold - missing his leg
- ___ 206. Mary Ann 3 hdd vase - marigold - very rare w/3 handles, nice
- ___ 207. Stippled Rays 6" plate - blue
- ___ 208. Fenton's Grape & Cable deep round bowl - cherry red - unusual to find no amberina
- ___ 209. Heart & Vine 9" plate - blue - very pretty
- ___ 210. Peacocks PCE bowl w/ribbed exterior - marigold - scarce
- ___ 211. Good Luck PCE bowl w/BW - green - nice
- ___ 212. Grape & Cable 9" plate w/BW back - green
- ___ 213. Grape & Cable 9" plate w/BW back - purple
- ___ 214. M'burg Hobnail swirl spittoon - amethyst - very nice
- ___ 215. Grape & Cable 9" plate w/plain back - marigold
- ___ 216. Dragon & Lotus ruffled bowl - red - very scarce & desirable
- ___ 217. Imperial Grape water pitcher - aqua - very, very rare color, has some buffing on base
- ___ 218. Imperial Grape water pitcher & tumbler - purple - super color, tumbler sold separate
- ___ 219. Classic Arts rose bowl - marigold - rare item
- ___ 220. Classic Arts large tumbler, or small vase - marigold - very rare
- ___ 221. M'burg Blackberry Wreath crimped edge sauce - marigold - radium & neat
- ___ 222. M'BURG POPPY FLATTENED OUT COMPOTE - AMETHYST - spectacular radium irid., as nice as you can imagine
- ___ 223. M'BURG POPPY FLATTENED OUT COMPOTE - GREEN - just like the amethyst, fantastic!
- ___ 224. Petal & Fan low ruffled bowl - peach opal
- ___ 225. M'burg 1910 Detroit Elks 3 in 1 edge bowl - amethyst - radium - super rare w/super color, minor buff on edge, hard to find the spot
- ___ 226. Brooklyn Bridge 10 ruffled bowl - marigold
- ___ 227. Holly ruffled hat - red - cherry & pretty
- ___ 228. Fanciful 9" plate - blue - a nice one
- ___ 229. Fanciful 9" plate - marigold
- ___ 230. Plume Panels 10" vase - red - very rare vase, cherry & nice
- ___ 231. Four Flowers large ruffled bowl - purple - pretty
- ___ 232. Imperial Jewels candlesticks - red - cherry as can be
- ___ 233. Wicker Work 8" plate - marigold
- ___ 234. Peacock at Urn 9" plate - blue - very nice
- ___ 235. Peacock at Urn 9" plate - marigold - dark & dandy
- ___ 236. Imperial Grape 6" plate - purple - pretty
- ___ 237. Leaf & Little Flowers ruffled compote - amethyst - radium, very scarce
- ___ 238. Leaf & Little Flowers sherbert shaped compote - green - satin
- ___ 239. Leaf & Little Flowers sherbert shaped compote - marigold - radium & nice
- ___ 240. Concord 9" plate - amethyst - extremely rare plate & nice! in high demand

- ___ 241. Ribbon Tie ruffled plate - marigold
 ___ 242. Peacock 9" plate w/ribbed back - ice blue - dark w/nice irid., very rare
 ___ 243. Peacock 9" plate w/ribbed back - green - extremely rare & very nice
 ___ 244. Peacock 9" plate w/ribbed back - blue - in high demand
 ___ 245. Peacock 9" plate w/ribbed back - amethyst - pretty
 ___ 246. Peacock 9" plate w/ribbed back - marigold - super pretty pink irid.
 ___ 247. Peacock 9" plate w/ribbed back - ice green
 ___ 248. Peacock 9" plate w/ribbed back - white - pretty
 ___ 249. Roccoco vase - smoke - pretty
 ___ 250. Heavy Iris Tankard water pitcher - white - lots of mult-color irid., rare!
 ___ 251. Heavy Iris tumblers (2) - white - choice
 ___ 252. Heavy Iris tankard water pitcher & tumbler - marigold - tumbler sold separate
 ___ 253. Imperial Grape water bottle - purple
 ___ 254. Peacock & Grape ruffled bowl - red - nice example, cherry, rare
 ___ 255. Peacock & Grape ruffled bowl - lime green - pretty, edge did not fill out when made
 ___ 256. M'BURG PRIMROSE 3 in 1 EDGE BOWL - BLUE - only one known in this shape, a M'burg collector's dream
 ___ 257. Imperial Grape ruffled bowl - purple - pretty
 ___ 258. Tornado vase, small size - purple - very scarce & desirable, getting tougher
 ___ 259. Poppy Show ruffled bowl - marigold - very good example
 ___ 260. Three Fruits dome ftd ruffled bowl - purple
 ___ 261. Wishbone epergne - green - pretty & quite scarce
 ___ 262. Wishbone epergne - amethyst - also pretty
 ___ 263. Four Flowers 6" plate - peach opal - nice
 ___ 264. Stag & Holly 9" spt ftd plate - marigold - rare & nice
 ___ 265. Acanthus chop plate - smoke - dark, a nice example
 ___ 266. Acanthus chop plate - marigold - also nice
 ___ 267. M'burg Vintage w/Hobnail back IC shaped bowl - marigold - satin & nice
 ___ 268. Inverted Strawberry powder jar - green - a scarce powder jar
 ___ 269. M'burg Hanging Cherries large IC shaped bowl - marigold - satin & nice
 ___ 270. Open Rose 9" plate - purple - spectacular! blue irid., as nice as I've seen
 ___ 271. Open Rose 9" plate - amber - very nice
 ___ 272. Open Rose 9" plate - green
 ___ 273. M'burg Peacock at Urn master IC bowl - amethyst - satin, minor rub on edge
 ___ 274. Coral 9" plate - marigold - very rare plate, seldom sold
 ___ 275. M'burg Holly Sprig tri-cornered 8" bowl - green - radium
 ___ 276. Hearts & Flowers ruffled bowl w/ribbed back - green - super spectacular, a pretty example of this rare bowl
 ___ 277. Hearts & Flowers ruffled bowl w/ribbed back - purple - scrumptous, manufacture peeling on base
 ___ 278. Blackberry Spray ruffled hat - red - cherry color, lacks irid.
 ___ 279. Dragon & Strawberry IC shaped bowl - marigold - very nice , rare & desirable
 ___ 280. Persian Garden 6" plate - marigold
 ___ 281. Holly goblet shaped compote - red - rare
 ___ 282. Holly & Berry ruffled bowl - peach opal
 ___ 283. Good Luck 9" plate w/BW back - purple - always desirable
 ___ 284. Good Luck 9" plate w/BW back - marigold - scarce
 ___ 285. Field Thistle 6" plate - marigold - very scarce
 ___ 286. Homestead chop plate - purple - signed NUART & fantastic, a great chop plate
 ___ 287. Octagon 7 piece wine set - marigold - stopper has some damage
 ___ 288. Lattice & Poinsettia ftd ruffled bowl - ice blue - a nice example, extremely rare & desirable
 ___ 289. M'burg Nesting Swan ruffled bowl - amethyst - radium & super
 ___ 290. Question Mark ftd plate - amethyst - scarce
 ___ 291. M'burg Night Stars 2 hldd bon bon - olive green - radium & very rare
 ___ 292. M'burg Night Stars 2 hldd bon bon - marigold - radium & fantastic, very rare
 ___ 293. Stippled Rays IC shaped bowl - red - cherry & super
 ___ 294. Cherry Chain large size ruffled bowl - marigold
 ___ 295. Poppy Show 9" plate - green - minor buffing on base, very rare
 ___ 296. Poppy Show 9" plate - blue - minor chip off poppy, very nice
 ___ 297. Poppy Show 9" plate - ice blue - very nice! rare & desirable
 ___ 298. Poppy Show 9" plate - purple - very nice! very rare
 ___ 299. Poppy Show 9" plate - marigold - nice
 ___ 300. M'burg Primrose ruffled bowl - amethyst - radium
 ___ 301. Orange Tree standard size mug - red - nice example, small nick on base
 ___ 302. Scroll Embossed 9" plate -purple- incredible
 ___ 303. Lattice & Grape tankard water pitcher & tumbler - blue - very scarce, tumbler sold separate
 ___ 304. Nautilus sugar - purple - scarce
 ___ 305. Dandelion mug - aqua opal - very scarce & desirable, butterscotch & nice
 ___ 306. Grape & Cable PCE bowl w/plain back - green
 ___ 307. Wishbone 9" ftd plate - purple - super pretty, flat & nice
 ___ 308. Double Scroll console set - red - very pretty set & very hard to find
 ___ 309. M'burg Cosmos IC shaped sauce -green-radium



- ___ 310. M'burg Hobnail rosebowl - amethyst - nice
 ___ 311. M'burg Hobnail rosebowl - marigold
 ___ 312. Daisy Wreath IC shaped bowl - marigold - has anyone seen one of these before?
 ___ 313. Four Flowers chop plate - peach opal
 ___ 314. Blackberry Spray square hat - red - cherry & nice
 ___ 315. Peacock at Urn ruffled compote - red - dark, prettier than most
 ___ 316. Fisherman's Mug - amethyst - nice
 ___ 317. M'burg Deep Grape compote - green - satin, super color & iridescence, very rare!
 ___ 318. M'burg Deep Grape compote - marigold - satin, very pretty, rare & desirable
 ___ 319. Wine & Roses wine glass - aqua
 ___ 320. M'burg Trout & Fly 3 in 1 edge bowl - amethyst - satin & nice
 ___ 321. Floral & Optic ftd round bowl - red - stretchy
 ___ 322. Floral & Optic ftd round bowl - marigold on milk glass
 ___ 323. Dahlia water pitcher - amethyst - rare
 ___ 324. Dahlia tumblers (2) - amethyst - choice
 ___ 325. File & Fan ruffled compote - marigold on milk glass
 ___ 326. Wide Panel Epergne - green - rare epergne, very desirable & pretty, minor roughness around holes
 ___ 327. M'burg Peacock at Urn ruffled bowl - green - satin, silvery
 ___ 328. M'burg Fleur De Lis dome ftd tri-cornered crimped edge bowl - marigold - radium
 ___ 329. Grape & Cable breakfast set - purple
 ___ 330. Imperial Grape 9" plate - purple - spectacular!, super irid. & rare!
 ___ 331. M'burg Blackberry Wreath 3 in 1 edge sauce - green - satin
 ___ 332. Acorn IC shaped bowl - red - very pretty example, one of the nicer I've seen
 ___ 333. Acorn ruffled bowl - red - a little to the brick side, but has pretty irid.
 ___ 334. Kittens ruffled bowl - marigold - 2 sets of kittens
 ___ 335. Kittens cup & saucer - marigold
 ___ 336. Lotus & Grape 9" plate - amethyst - extremely beautiful & RARE!
 ___ 337. M'burg Blackberry Wreath 9" ruffled bowl - marigold - satin & dark
 ___ 338. Inverted Strawberry creamer - green - pretty, signed Near Cut
 ___ 339. Round Up 9" plate - peach opal - nice opal
 ___ 340. Round-Up 9" plate - blue - pinpoint on edge
 ___ 341. Stippled Peacock 9" plate w/ribbed back - blue - pretty
 ___ 342. Floral & Optic ftd chop plate - red - minor spot on one foot, extremely rare & pretty
 ___ 343. Floral & Optic cake plate - marigold
 ___ 344. M'burg Roses & Fruits 2 hdd ftd bon bon - marigold - super pretty satin, very rare
 ___ 345. M'burg Roses & Fruits 2 hdd ftd bon bon - green - super pretty radium, rare
 ___ 346. M'burg Blackberry Wreath 3 in 1 edge sauce - green - radium, nice
 ___ 347. Persian Medallion bon bon - red
 ___ 348. Orange Tree 9" plate - blue - a stunner!
 ___ 349. Orange Tree 9" plate - white - pretty example
 ___ 350. Orange Tree 9" plate - marigold
 ___ 351. M'BURG ACORN JELLY COMPOTE - MARIGOLD - radium, only one known in marigold, a fantastic piece of M'burg
 ___ 352. M'burg Holly Sprig card tray shaped bon-bon - marigold -satin
 ___ 353. M'burg Holly Sprig card tray shaped bon-bon - green - radium & pretty
 ___ 354. Florentine large size candlesticks - red - very pretty & rare
 ___ 355. Nippon PCE bowl - green - much rarer than the pastels, nice
 ___ 356. Nippon PCE bowl - ice blue
 ___ 357. Holly 9" plate - green - nice, rare & desirable
 ___ 358. Holly 9" plate - blue - super
 ___ 359. Holly 9" plate - marigold
 ___ 360. Victorian ruffled bowl - purple - spectacular color for this piece, flat, almost square shaped, the best one I've seen, minor spot on back edge
 ___ 361. Flowers & Frames domed ftd ruffled bowl - peach opal
 ___ 362. Inverted Strawberry spittoon - marigold - signed Near Cut, nice
 ___ 363. M'burg Diamonds water pitcher - green - very nice example
 ___ 364. M'burg Diamonds water pitcher - amethyst - chip on base
 ___ 365. Grape & Cable pin dish - purple - very scarce & nice
 ___ 366. Open Rose rosebowl - amber
 ___ 367. Grape & Cable tankard pitcher - marigold - very scarce pitcher
 ___ 368. Stippled Grape & Cable ruffled bowl w/ribbed back - green - very scarce stippled
 ___ 369. Fishscale & Beads ruffled bowl - marigold
 ___ 370. M'burg Many Stars 10" IC shaped bowl (5 point star) - green - radium & super!
 ___ 371. M'burg Grape Wreath 3 in 1 edge 7" bowl - amethyst - radium, pretty
 ___ 372. Pinecone 6" plate - green - a hot item, nice
 ___ 373. Kittens two sides up dish - blue - scarce
 ___ 374. N's Lovely tri-cornered ftd bowl - purple - super pretty, very rare & desirable
 ___ 375. Peacocks ruffled bowl w/ribbed back - aqua opal - very nice
 ___ 376. Fenton's Flowers rosebowl - red - feet have damage, is your's perfect? very pretty
 ___ 377. Illinois Soldiers & Sailors 9" plate - blue - very nice example, rare
 ___ 378. Hobstar Band ruffled bowl - marigold
 ___ 379. Flute & Clear cream and sugar - white stretch
 ___ 380. Wide Panel 8 1/4" plate - red
 ___ 381. Wide Panel 8 1/4" plate - white
 ___ 382. Frosted Block 9" plate - clambroth
 ___ 383. Tumble Up - marigold

Seeck Auctions

P.O. Box 377
Mason City, Iowa 50402



FIRST CLASS

