

# TEXAS

# AUCTION

## CARNIVAL GLASS CLUB CONVENTION

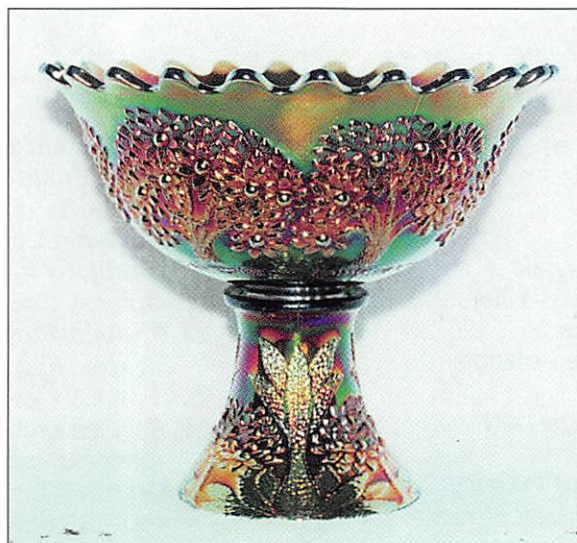
Saturday, February 17, 1996

9:00 AM

Hotel Sofitel - Greenspoint, Houston, Texas

(713) 445-9000

for reservations



**Texas Club Convention Auction**  
**SATURDAY, FEBRUARY 17, 1996 - 9:00 A.M.**  
**Hotel Sofitel at Greenspoint -- Houston, Texas**  
 ( Take the Imperial Valley Exit off Beltway 8 )

It is that time of year! We all head to Houston for another great Texas Convention. This year's auction is possibly one of our best yet - 5 mid-size Grape & Cable punch sets, fantastic red, super pastels, not to mention a green Orange Tree punch bowl. There is so much in this sale that you can't mention it all, so just come and see for yourself. The convention this year is going to be held at the Hotel Sofitel (a few blocks from last year's hotel.) It is a super nice place, so come and ENJOY!

**Texas Carnival Glass Club Convention Information:** Contact President Roy Hieger at (903) 581-2395.

**Preview: Saturday, February 17th 7:30 a.m.**

**8.25 % SALES TAX WILL BE CHARGED** -- Please bring your resale tax number with you.

**WRITE-IN BID POLICY**

1. Write-in bids will be accepted by sending the numbers of the item(s) desired and the amount bid on each to:  
**Seeck Auctions, PO Box 377, Mason City, Iowa 50402.**
2. If known by Auction Company, bids may be done over the telephone. (515)424-1116.
3. There is a \$5 handling charge for each successful bid. Shipping and insurance charges are additional.
4. Bidders will be notified by a phone call if their bid(s) are successful. This call will be made 1 - 3 days after the auction is over.
5. Please have all bids in by Monday, February 12th. All bids (by mail or phone) after this date may not be carried out.
6. If you do not receive an item that sold for less than your bid, assume we cancelled your bid because the piece of glass had below average color, manufacture problem, damage or was not listed correctly.
7. To receive price lists send: \$20 -- for this auction and next 7 auctions  
 \$5 -- for only this auction or individual auction (please specify)

Send to the above address.

- 
- |   |   |
|---|---|
| <p>___ 1. Butterflies bon bon - green - small nick</p> <p>___ 2. Heavy Grape low ruffled plate - marigold - different</p> <p>___ 3. Tiger Lily tumbler - marigold</p> <p>___ 4. Louisa ftd banana bowl - marigold</p> <p>___ 5. French Knots ruffled hatshape - blue</p> <p>___ 6. Windmill ruffled bowl - smoke</p> <p>___ 7. Thin Rib &amp; Drape 5 1/2" vase - marigold</p> <p>___ 8. Windmill tumbler - purple</p> <p>___ 9. Nearcut souvenir mug w/Argyle, MN etching - marigold</p> <p>___ 10. <b>Vintage 9" ruffled bowl - red - cherry, cherry &amp; beautiful, super piece of red!</b></p> <p>___ 11. Illusion bon bon - marigold</p> <p>___ 12. Little Flowers ruffled sauce - blue</p> <p>___ 13. Little Flowers ruffled sauce - marigold</p> <p>___ 14. Grape &amp; Cable sweatmeat whimsey - purple</p> <p>___ 15. <b>Wishbone &amp; Spades 6" plate - purple - electric irid., a scarce piece</b></p> <p>___ 16. Flute 2 handled sugar - amber - scarce color</p> <p>___ 17. Grape &amp; Cable breakfast set - marigold</p> <p>___ 18. <b>N's Town Pump - GREEN - a super example, as good as they get, extremely rare being the toughest color to find</b></p> | <p>___ 19. Pansy ruffled bowl - purple</p> <p>___ 20. Three Fruits dome ftd ruffled bowl - marigold - nice</p> <p>___ 21. <b>Zippered Loop 8" lamp (4 3/4" base) - marigold</b></p> <p>___ 22. Grape &amp; Cable spooner - purple</p> <p>___ 23. <b>Fruits &amp; Flowers bon bon - aqua opal - scarce, has pretty irid.</b></p> <p>___ 23a. Fruits &amp; Flowers bon bon - purple</p> <p>___ 24. Stippled Fruits &amp; Flowers bon bon - marigold - scarce stippled</p> <p>___ 25. <b>Orange Tree punch bowl &amp; base, flared top - GREEN - one of two known, has super irid., a top rarity and key piece in this auction!</b></p> <p>___ 26. Orange Tree 8 pc. punch set w/flared top - marigold - pretty</p> <p>___ 27. Dugan Vintage domed ftd ruffled bowl - green - real pretty, rare color for Dugan</p> <p>___ 28. <b>N's Peacock at Urn master IC bowl - ice blue - super color, has minor pinpoint on edge</b></p> <p>___ 29. <b>N's Peacock at Urn master IC bowl - purple - scarce</b></p> <p>___ 30. <b>N's Peacock at Urn sauces (6) - purple - choice</b></p> |
|---|---|

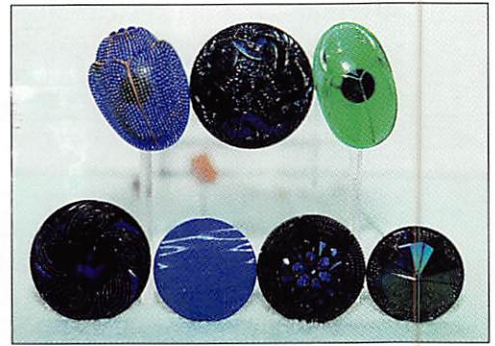
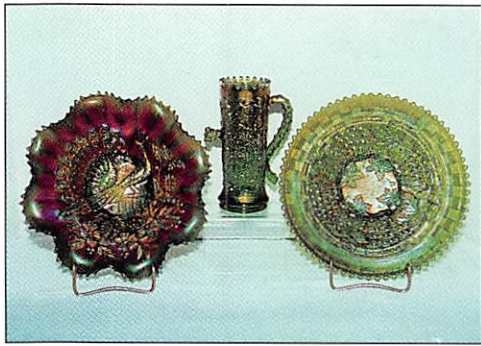
- \_\_\_ 31. N's Peacock at Urn master IC bowl - marigold - flat example, scarce
- \_\_\_ 32. N's Peacock at Urn saucers (6) - marigold - choice
- \_\_\_ 33. Imperial Grape water pitcher - amber - super pretty, a rare color, not many of these available
- \_\_\_ 34. Acanthus chop plate - marigold
- \_\_\_ 35. Imperial Grape 6" plate - marigold
- \_\_\_ 36. Raspberry milk pitcher - white - very rare color, extremely desirable & pretty!
- \_\_\_ 37. Raspberry milk pitcher - green - pretty!!
- \_\_\_ 38. Three Fruits 9" plate w/plain back - purple - spectacular irid., stretchy & gorgeous
- \_\_\_ 38a. Three Fruits 9" plate w/BW back - green
- \_\_\_ 39. Three Fruits 9" plate w/BW back - marigold
- \_\_\_ 40. M'burg Double Star tankard water pitcher - marigold - super pretty for a very rare pitcher, have never seen one or sold one before
- \_\_\_ 41. Butterfly & Berry master berry bowl - marigold - pretty
- \_\_\_ 42. Stippled Grape & Cable tobacco humidor - blue - very rare item, minor nick on base under lid
- \_\_\_ 43. Grape & Cable tobacco humidor - purple - always in demand, scarce
- \_\_\_ 44. Grape & Cable tobacco humidor - marigold - also scarce, minor nick under lid
- \_\_\_ 45. Dragon & Lotus spt ftd IC shaped bowl - amethyst
- \_\_\_ 46. Dragon & Lotus spt ftd IC shaped bowl - blue
- \_\_\_ 47. Embroidered Mums ruffled bowl w/ribbed back - lavender - super irid., pretty & scarce
- \_\_\_ 48. Wild Blackberry 3 in 1 edge ruffled bowl - green
- \_\_\_ 49. Ribbon Tie 3 in 1 edge ruffled plate or low bowl - amethyst - very flat!
- \_\_\_ 50. Four-Seventy-Four mid-size water pitcher - purple - exceptional blue irid., extremely rare, very few known
- \_\_\_ 51. Florentine candlesticks - vaseline
- \_\_\_ 52. Florentine candlesticks - celest blue
- \_\_\_ 53. African Shield 2 3/4" vase - marigold
- \_\_\_ 54. S-Repeat punch cup whimsey creamer - purple
- \_\_\_ 55. Grape & Cable master IC bowl - ice green - very rare & desirable, a must for Grape & Cable collectors
- \_\_\_ 56. Grape & Cable IC sauce - ice green - very scarce
- \_\_\_ 56a. Grape & Cable master IC bowl - blue - very rare color, nice
- \_\_\_ 57. Grape & Cable master IC bowl - pastel marigold
- \_\_\_ 58. Grape & Cable PCE bowl - marigold
- \_\_\_ 59. Fenton's Peacock at Urn IC shaped bowl - green - scarce color
- \_\_\_ 60. Fenton's Peacock at Urn 3 in 1 edge deep bowl - amethyst - rare shape
- \_\_\_ 61. Fenton's Peacock at Urn ruffled bowl - white - frosty & nice
- \_\_\_ 62. Fenton's Peacock at Urn ruffled bowl - blue
- \_\_\_ 63. Fenton's Peacock at Urn ruffled bowl - marigold
- \_\_\_ 64. Butterfly & Fern 7 pc. water set - blue - super pretty irid., one of the nicest sets I have seen
- \_\_\_ 65. Butterfly & Fern water pitcher - marigold - pretty
- \_\_\_ 66. Cosmos & Cane deep ruffled 7" bowl - white
- \_\_\_ 67. Rose Show 9" plate - blue - nice example, very pretty
- \_\_\_ 68. Rose Show 9" plate - amethyst - also a nice example
- \_\_\_ 69. Rose Show 9" plate - white - flat w/nice irid.
- \_\_\_ 70. Scarab Shell hatpin - blue - very hard to get
- \_\_\_ 71. Scarab Shell hatpin - purple - also a toughie
- \_\_\_ 72. Jute Braid hatpin - purple - pretty
- \_\_\_ 73. Basketweave hatpin - purple - pretty
- \_\_\_ 74. Turbin hatpin - purple
- \_\_\_ 75. Joan of Arc smelling salts toothpick - marigold - unusual miniature
- \_\_\_ 76. Imperial Flute punch bowl & base - marigold - dark color & pretty
- \_\_\_ 77. Blueberry tumblers (3) - marigold - pretty, choice
- \_\_\_ 78. Acorn ruffled bowl - red - has buffed spot on outer edge
- \_\_\_ 79. Thumbprint & Ovals vase - marigold - scarce
- \_\_\_ 80. Orange Tree 9" plate w/trunk - blue - super!
- \_\_\_ 81. Orange Tree 9" plate w/trunk - marigold
- \_\_\_ 82. Orange Tree 9" plate - white
- \_\_\_ 83. Orange Tree 9" plate - clambroth
- \_\_\_ 84. Wild Rose syrup - marigold - a very rare item, a classic piece
- \_\_\_ 85. Greek Key dome ftd deep bowl - green
- \_\_\_ 86. Grape & Cable ruffled fruit bowl - ice green - extremely rare item, very tough to find
- \_\_\_ 87. Grape Delight rosebowl - blue
- \_\_\_ 88. Fine Cut & Roses candy dish - green
- \_\_\_ 89. Horse Medallion 7" plate - blue - rare color for this plate, small plates are hot, nice
- \_\_\_ 90. Greek Key tumbler - green - pretty
- \_\_\_ 91. Raspberry tumbler - purple - super
- \_\_\_ 92. N's Eight Sided bushel basket - ice blue - very rare color
- \_\_\_ 93. N's Eight Sided bushel basket -purple - scarce

- \_\_\_ 94. N's Eight Sided bushel basket - blue
- \_\_\_ 95. N's Eight Sided bushel basket - white
- \_\_\_ 96. Persian Medallion 9" plate - blue - very scarce item & nice
- \_\_\_ 97. Two Flowers IC shaped ftd bowl - marigold
- \_\_\_ 98. Waffle Block oval hdd basket - marigold - first one I've seen, unusual
- \_\_\_ 99. M'burg Holly Sprig 6" deep bowl - green - radium, unusual piece
- \_\_\_ 100. Grape & Cable mid-size 8 pc. punch set - white - extremely rare, one of just a few known, a key piece in this auction, frosty w/blue & pink irid., SUPER!
- \_\_\_ 101. Grape & Cable mid-size 8 pc. punch set - blue - also extremely rare, a handful known, super electric color, cups are stippled
- \_\_\_ 102. Grape & Cable mid-size 8 pc. punch set - green - extremely rare, much tougher than masters or small size punch sets
- \_\_\_ 103. Grape & Cable mid-size 8 pc. punch set - amethyst - rare, also tougher than the other two sizes of punch sets, pretty
- \_\_\_ 104. Grape & Cable mid-size 8 pc. punch set - marigold - rare, ditto from above
- \_\_\_ 105. Soda Gold spittoon - lime green
- \_\_\_ 106. Soda Gold spittoon - marigold
- \_\_\_ 107. Persian Medallion 6" plate - black amethyst - a very rare plate
- \_\_\_ 108. Persian Medallion 6" plate - marigold - pretty
- \_\_\_ 109. Singing Birds mug - lavender - a very pretty mug & scarce
- \_\_\_ 110. Singing Birds mug - purple
- \_\_\_ 111. Singing Birds mug - marigold
- \_\_\_ 112. Springtime 7 pc. water set - green - a very rare set in this color & pretty
- \_\_\_ 113. Orange Tree loving cup - marigold - has crack in handle
- \_\_\_ 114. M'burg Strawberry ruffled compote - green - radium
- \_\_\_ 115. M'burg Strawberry ruffled compote - marigold - radium
- \_\_\_ 116. Grape & Cable cvd sweatmeat - purple - spectacular irid.
- \_\_\_ 117. Woodlands 6" miniature vase - smoke - only one I've heard of
- \_\_\_ 118. Estate creamer - blue opal - rare color
- \_\_\_ 119. Peacocks 9" plate w/ribbed back - marigold - nice
- \_\_\_ 120. Peacocks 9" plate w/ribbed back - purple
- \_\_\_ 121. Concord 3 in 1 edge bowl - green - very scarce & popular item
- \_\_\_ 122. Imperial Grape water carafe - purple - super
- \_\_\_ 123. Grape & Cable powder jar - ice green - normal roughness on edge of lid, extremely rare, one of just a few known, a great piece
- \_\_\_ 124. Grape & Cable powder jar bottom - ice blue - rare, who has a lid?
- \_\_\_ 125. Grape & Cable powder jar - green - very scarce, chip on underside of lid
- \_\_\_ 126. Grape & Cable powder jar - purple- tiny lid nick
- \_\_\_ 127. Grape & Cable dresser tray - purple - always in demand
- \_\_\_ 128. Grape & Cable pin tray - purple, nice
- \_\_\_ 129. Grape & Cable perfume bottle w/stopper - purple - a rare item
- \_\_\_ 130. Grape & Cable colognes w/stoppers (2) - purple - choice, good match
- \_\_\_ 131. Grape & Cable hatpin holder - purple - holders are hot
- \_\_\_ 132. Windflower hdd nappy - marigold
- \_\_\_ 133. Butterfly & Berry 9" vase - red slag - extremely rare vase, slag goes all the way thru the vase from top to bottom, a neat vase
- \_\_\_ 134. Strawberry 9" plate w/BW back - green
- \_\_\_ 135. Persian Medallion ruffled sauce - aqua - scarce color
- \_\_\_ 136. Fenton's Grape & Cable ball ftd round bowl - celest blue - super, super irid., very pretty!
- \_\_\_ 137. Astors rosebowl - marigold - scarce item
- \_\_\_ 138. Riesling miniature creamer - marigold
- \_\_\_ 139. Crazy Paving miniature creamer - marigold
- \_\_\_ 140. Holly ruffled bowl - blue opal - more opal than most with spectacular color, a great piece!
- \_\_\_ 141. Holly ruffled bowl - white
- \_\_\_ 142. Beaded Bullseye 12" vase - purple - electric blue irid., pretty
- \_\_\_ 143. Beaded Bullseye 10 1/2" vase - marigold
- \_\_\_ 144. Stippled Grape & Cable bon bon - green - has chip on point, pretty
- \_\_\_ 145. Grape & Cable bon bon - marigold - dark & pretty
- \_\_\_ 145a. Fenton's Grape & Cable "Compliments of Pacific Coast Mail Order House of Los Angeles" ruffled fruit bowl - marigold - extremely rare item, a great advertising piece, pretty
- \_\_\_ 146. Wishbone 10" ruffled bowl - green - scarce
- \_\_\_ 147. Concave Diamonds tumbler - vaseline - scarce color
- \_\_\_ 148. Strawberry Scroll tumbler - blue
- \_\_\_ 149. Four-Seventy-Four tumbler - purple
- \_\_\_ 150. Hearts & Flowers 9" plate - ice blue - super color & great irid., flat & beautiful, a great rarity
- \_\_\_ 151. Grape & Cable 5 pc. berry set - purple, slight roughness on small bowls
- \_\_\_ 152. Grape & Cable 7 pc. berry set - marigold, slight roughness from use on small bowls
- \_\_\_ 153. Elegance hatpin - purple - very pretty &

- rare
- \_\_\_ 154. Wave hatpin - purple - first one I've seen
- \_\_\_ 155. Wave hatpin - blue - rare
- \_\_\_ 156. Wave hatpin - green - rare
- \_\_\_ 157. Tufted Throw Pillow hatpin - purple
- \_\_\_ 158. Persian Garden fruit bowl & base - purple - very scarce item & nice
- \_\_\_ 159. Six Petals tri-cornered ruffled bowl - purple
- \_\_\_ 160. Three Row Open Edge Basketweave ruffled bowl - ice green - very scarce
- \_\_\_ 161. Peacock & Dahlia IC shaped 7" bowl - green - scarce color
- \_\_\_ 162. Holly 2-sides up compote - violet - unusual shape & color
- \_\_\_ 163. Holly ruffled compote - amethyst - scarce color
- \_\_\_ 164. Holly ruffled compote - blue
- \_\_\_ 165. Holly ruffled compote - lavender
- \_\_\_ 166. Holly ruffled compote - pink
- \_\_\_ 167. Holly ruffled compote - lime green
- \_\_\_ 168. Holly ruffled compote - pastel blue
- \_\_\_ 169. Holly ruffled compote - marigold
- \_\_\_ 170. Ten Mums 7 pc. tankard water set - marigold - very rare set, nice
- \_\_\_ 171. Honeycomb rosebowl - peach opal w/ cranberry fritz - very rare rosebowl, only one I've seen w/this combination
- \_\_\_ 172. Two Flowers spatula footed 9" plate - marigold - very rare plate, nice
- \_\_\_ 173. Kittens vase - marigold
- \_\_\_ 174. Kittens toothpick - marigold
- \_\_\_ 175. Peacock & Grape collar based 9" plate - blue - spectacular color & irid., a super, super plate that is extremely rare
- \_\_\_ 176. Heart & Vine ruffled bowl - marigold
- \_\_\_ 177. Oriental Poppy tankard water pitcher - marigold
- \_\_\_ 178. Double Stemmed Rose dome ftd plate - purple - electric irid, super pretty
- \_\_\_ 179. Floral & Grape water pitcher - amethyst
- \_\_\_ 180. Floral & Grape tumbler - amethyst
- \_\_\_ 181. Floral & Grape water pitcher - marigold
- \_\_\_ 182. Floral & Grape tumbler - marigold
- \_\_\_ 183. Dugan's Cherries 3 in 1 edge ftd bowl - purple - electric irid.
- \_\_\_ 184. Holly 9" plate - clambroth
- \_\_\_ 185. Peacocks ruffled bowl w/ribbed back - aqua opal - super pretty w/butterscotch type of irid., a dandy
- \_\_\_ 186. Peacocks ruffled bowl w/ribbed back - green - super red irid. on a rare bowl
- \_\_\_ 187. Peacocks ruffled bowl w/ribbed back - blue - scarce item
- \_\_\_ 188. Hobstar & Feather punch cup - purple
- \_\_\_ 189. Fashion punch cup - lavender
- \_\_\_ 190. Dragon & Lotus collar based ruffled bowl - red - a very pretty one
- \_\_\_ 190a. Dragon & Lotus collar base ruffled bowl - amethyst
- \_\_\_ 191. Stippled Grape & Cable 10" ruffled bowl - marigold - very rare stippled, most stippled are blue
- \_\_\_ 192. Flute table set - marigold - very scarce set, matches nicely, pretty
- \_\_\_ 193. N's Dandelion mug - aqua opal - always in demand
- \_\_\_ 194. Beaded Cable rosebowl - purple
- \_\_\_ 195. M'burg Peacocks master berry bowl - amethyst - scarce, radium
- \_\_\_ 196. Windmill round bowl - marigold on moonstone - very, very pretty, extremely rare, not many around
- \_\_\_ 197. Imperial Flute creamer & sugar - purple - scarce set & pretty
- \_\_\_ 198. Grape & Cable hldd pin dish (made from punch cup) - ice blue - extremely rare item, only a few known
- \_\_\_ 199. Circle Scroll 8" vase - marigold
- \_\_\_ 200. Plaid IC shaped bowl - red - extremely rare, a classic red piece, very seldom sold
- \_\_\_ 201. Kittens cup - marigold
- \_\_\_ 202. Dogwood hatpin - purple - pretty
- \_\_\_ 203. Two Flowers hatpin - purple - pretty
- \_\_\_ 204. Basketflower hatpin - purple
- \_\_\_ 205. Dimples & Brilliance hatpin - white - rare
- \_\_\_ 206. Dimples & Brilliance hatpin - purple
- \_\_\_ 207. Grapevine Lattice 6" plate - amethyst - pretty, souvenir of Gettysburg 1863
- \_\_\_ 208. Stippled Good Luck ruffled bowl - blue
- \_\_\_ 209. Wild Rose ftd deep bowl - green
- \_\_\_ 210. Stippled Grape & Cable PCE bowl - blue - very pretty, a nice bowl
- \_\_\_ 211. Two Flowers spt ftd deep round bowl - blue
- \_\_\_ 212. Pinecone 7" plate - amber - very rare, not many around
- \_\_\_ 213. Cherry Circles bon bon - aqua - scarce color
- \_\_\_ 214. Cherry Circles bon bon - marigold
- \_\_\_ 215. Rose Show Variant 9" plate - blue - super, super pretty, small nick on rose
- \_\_\_ 216. Hobstar & Feather punch bowl top w/Fleur De Lis interior & 11 punch cups - marigold - has pattern glass base, punch bowl is cracked
- \_\_\_ 217. Peter Rabbit ruffled bowl - green - very rare, chip on edge
- \_\_\_ 218. Shell & Sand 9" plate - smoke - one point chipped, pretty
- \_\_\_ 219. Wishbone ftd ruffled bowl - horehound - very rare color
- \_\_\_ 220. Tree Trunk 7" vase - purple - nice
- \_\_\_ 221. Tree Trunk 7" vase - green - nice
- \_\_\_ 222. M'burg Peacock at Urn 3 in 1 edge Mystery bowl - amethyst - radium & nice
- \_\_\_ 223. M'burg Peacock at Urn 3 in 1 edge Mystery bowl - green - radium

- \_\_\_ 224. M'burg Diamonds water pitcher - marigold - dark & pretty
- \_\_\_ 225. Peacocks 9" plate w/plain back - ice green
- \_\_\_ 226. Thistle ruffled bowl - dark amber - odd piece, nice
- \_\_\_ 227. Orange Tree standard size mug - red
- \_\_\_ 228. Orange Tree standard size mug - blue
- \_\_\_ 229. Rose Show ruffled bowl - aqua opal - nice example w/lots of opal
- \_\_\_ 230. Rose Show ruffled bowl - ice blue - very scarce item
- \_\_\_ 230a. Rose Show ruffled bowl - white - desirable pattern
- \_\_\_ 231. Oriental Poppy tumbler - purple - pretty
- \_\_\_ 232. Oriental Poppy tumbler - marigold - pretty
- \_\_\_ 233. Diamond Points bushel basket - marigold - a very rare basket, not many sold, nice
- \_\_\_ 234. Orange Tree powder jar - blue
- \_\_\_ 235. Grape & Cable water pitcher - smoke - very rare color, not many known
- \_\_\_ 236. Double Loop chalice - purple
- \_\_\_ 237. Double Loop chalice - teal green - open bubble on base, but nice
- \_\_\_ 238. Double Loop chalice - blue, chip on base
- \_\_\_ 239. Stag & Holly spt ftd IC shaped bowl - smoke - rare color
- \_\_\_ 240. Persian Medallion chop plate - blue - silvery
- \_\_\_ 241. Grape & Cable banana boat - ice green - very rare color, getting harder to find all the time!
- \_\_\_ 242. Grape & Cable banana boat - blue - very rare color & nice
- \_\_\_ 243. Grape & Cable banana boat - purple
- \_\_\_ 244. Round Up low IC shaped bowl - amethyst - super pretty irid.
- \_\_\_ 245. Good Luck PCE bowl - blue - very pretty
- \_\_\_ 246. Fisherman's mug - purple - a nice example!
- \_\_\_ 247. N's Stippled Peacock at Urn IC bowl - marigold - rare stippled & very nice
- \_\_\_ 248. Peacock & Grape ruffled bowl - purple
- \_\_\_ 249. Scroll Embossed miniature compote or sherbert - purple - very pretty & extremely scarce
- \_\_\_ 250. M'burg Strawberry Wreath square bowl - amethyst - radium, rare shape
- \_\_\_ 251. Console set - blue opaque
- \_\_\_ 252. Fluffy Peacock water pitcher - green - a nice water pitcher
- \_\_\_ 253. Fluffy Peacock tumbler - green - pretty
- \_\_\_ 254. Acorn IC shaped bowl - red slag - cherry red color w/slag inside
- \_\_\_ 255. Pastel Swan - purple - scarce color
- \_\_\_ 256. Pastel Swan - celest blue
- \_\_\_ 257. Pastel Swan - pink
- \_\_\_ 258. Pastel Swan - ice green
- \_\_\_ 259. Dragon & Strawberry IC shaped bowl - amethyst - very rare bowl, not many known
- \_\_\_ 260. Holly & Berry tri-cornered hdd nappy - peach opal
- \_\_\_ 261. Grape & Cable large size fruit bowl - ice green - extremely rare, first I've seen, not many around, has one point ground
- \_\_\_ 262. Grape & Cable 4 pc. table set - green - very scarce set, sold choice
- \_\_\_ 263. Wreath of Roses ruffled compote - green
- \_\_\_ 264. Fenton's Grape & Cable collar based ruffled bowl - red - scarce
- \_\_\_ 265. Penstar hatpin - purple - very rare
- \_\_\_ 266. Pinwheel hatpin - purple - also very rare
- \_\_\_ 267. Stylized Scarab hatpin - green - very rare
- \_\_\_ 268. Stylized Scarab hatpin - amethyst - also rare
- \_\_\_ 269. Hex Dome hatpin - purple
- \_\_\_ 270. N's Eight Sided bushel basket - ice green - very rare in the eight-sided, tiny nick on top edge
- \_\_\_ 271. N's Eight Sided bushel basket - green - rare color
- \_\_\_ 272. N's Eight Sided bushel basket - horehound
- \_\_\_ 273. N's Eight Sided bushel basket - marigold, small open bubble on handle
- \_\_\_ 274. Floor Lamp w/2 scenic handpainted shades
- \_\_\_ 275. Table Lamp, base is irid. carmel color glass, has cloth shade
- \_\_\_ 276. Table Lamp w/2 marigold on moonstone ribbed shades
- \_\_\_ 277. Table Lamp w/2 Laurel shades in pearl
- \_\_\_ 278. Table Lamp w/single clambroth Leaf Tier shade
- \_\_\_ 279. Basketweave Open Edge ruffled basket - ice blue - rare color, dark & beautiful
- \_\_\_ 280. M'burg Perfection water pitcher - amethyst - radium, extremely rare pitcher, a classic M'burg rarity
- \_\_\_ 281. Leaf & Beads rosebowl - aqua opal
- \_\_\_ 282. Concord ruffled bowl - green - very pretty
- \_\_\_ 283. Miniature Intaglio flower basket w/wire hdl - peach opal - sov. of Cedar Point
- \_\_\_ 284. Heavy Iris tumbler - amethyst
- \_\_\_ 285. Peacock at the Fountain tumbler - ice blue - scarce color
- \_\_\_ 286. Stork & Rushes tumbler - blue
- \_\_\_ 287. Dragon & Lotus IC shaped collar based bowl - amber opal - very scarce piece
- \_\_\_ 288. Orange Tree IC shaped bowl - blue
- \_\_\_ 289. Stippled Three Fruits spt ftd ruffled bowl - aqua opal - butterscotch & pretty
- \_\_\_ 290. Garden Path Variant deep round sauce - peach opal - unusual shape, quite scarce
- \_\_\_ 291. M'burg Zig Zag square crimped edge bowl - amethyst - radium, very rare & pretty

- \_\_\_ 292. M'burg Grape Wreath Variant 8" crimped edge bowl - marigold - radium
- \_\_\_ 293. Bouquet water pitcher - marigold
- \_\_\_ 294. Nautilus creamer - peach opal
- \_\_\_ 295. Three-in-One 6" plate - marigold
- \_\_\_ **296. Vintage nut bowl - red - very scarce item**
- \_\_\_ 297. Pony ruffled bowl - purple
- \_\_\_ 298. Pony ruffled bowl - marigold
- \_\_\_ **299. Basketweave Open Edge basket w/2 sides up - red - always desired**
- \_\_\_ **300. N's Butterfly bon bon w/ribbed back - ice blue - extremely rare bon bon, very pretty irid., a top rarity & a must for pastel collectors**
- \_\_\_ **301. Sun's Up hatpin - purple - very rare in purple, minor nicks on top edge**
- \_\_\_ **302. Star Center hatpin - purple - very unusual, neat & pretty**
- \_\_\_ 303. Bars & Beads hatpin - purple
- \_\_\_ 304. Big Top hatpin - purple
- \_\_\_ 305. Top of the Morning hatpin - purple
- \_\_\_ 306. Six Plums hatpin - purple
- \_\_\_ 307. Butterflies hatpin - purple
- \_\_\_ 308. Big Butterfly hatpin - purple
- \_\_\_ 309. Emu large ruffled bowl - purple - very scarce Australian item
- \_\_\_ 310. Stag & Holly large size IC shaped ftd bowl - marigold
- \_\_\_ 311. Miniature cordial - marigold - similar to roll, goes only half way up bowl of cordial
- \_\_\_ 312. Grape Delight rosebowl - purple
- \_\_\_ **313. Fenton's Peacock at Urn 9" plate - blue - pretty**
- \_\_\_ 314. N's Near Cut goblet - purple
- \_\_\_ **315. Stippled Strawberry ruffled bowl - horehound - very rare bowl & very pretty**
- \_\_\_ 316. Blackberry miniature compote - green - scarce color for these
- \_\_\_ **317. Persian Garden large IC bowl - white - very pretty**
- \_\_\_ **318. Double Scroll candlesticks - white - can't remember seeing these in white before**
- \_\_\_ **319. Stippled Grape & Cable 9" plate - green - super example & super pretty**
- \_\_\_ 320. Peacock at Urn ruffled compote - green - very rare color for these, nice
- \_\_\_ **321. Good Luck ruffled bowl w/ribbed back - blue**
- \_\_\_ 322. Acorn Burrs punch cup - white - if you need it, here's your chance
- \_\_\_ 323. Scroll Embossed 9" plate - purple - super, Imperial at its best
- \_\_\_ 324. M'burg Nesting Swan ruffled bowl - marigold - satin
- \_\_\_ **325. M'burg Hobnail Swirl rosebowl - amethyst**
- \_\_\_ 326. Daisy Cut bell - marigold - unusually light
- \_\_\_ **327. Vintage 6" plate - amethyst - very scarce small plate, a toughie**
- \_\_\_ 327a. Miniature loving cup - marigold
- \_\_\_ 328. Grape & Cable PCE bowl w/plain back - lavender - very pretty
- \_\_\_ 329. N's Bushel Basket - ice green
- \_\_\_ 330. N's Butterfly bon bon - purple, small chip on base
- \_\_\_ 331. Three Fruits ruffled bowl w/BW back - marigold, small chip on one point
- \_\_\_ 332. Bo Peep mug - marigold
- \_\_\_ **333. Blackberry Spray ruffled hatshape - red - always in demand**
- \_\_\_ **333a. Flute toothpick - marigold**
- \_\_\_ 334. Nippon PCE bowl - ice blue - nice
- \_\_\_ 335. Flowers & Frames dome ftd ruffled bowl - purple - very pretty
- \_\_\_ 336. Question Mark crimped edge ruffled compote - marigold
- \_\_\_ 337. Floral & Optic ftd rosebowl - smoke - scarce piece
- \_\_\_ **338. Vintage 6" ruffled sauce - celest blue - first one I've seen, RARE, a pastel blue collector's dream**
- \_\_\_ 339. MaryAnn 2 hldd vase - blue opal - not irid.
- \_\_\_ 340. Diamond Quilted pattern covered candy dish - marigold - different, possibly English
- \_\_\_ 341. Covered pin dish - marigold
- \_\_\_ 342. Wreath of Roses punch cup w/Persian Medallion interior - marigold
- \_\_\_ 343. Imperial Grape rosebowl w/Imperial Cross Mark - amberina - not carnival
- \_\_\_ 344. Panelled Flute sherbert - marigold - English
- \_\_\_ 345. Un-named miniature vase - marigold
- \_\_\_ 346. Diamond & Sunburst wine w/Mary Fox 1909 etching - marigold
- \_\_\_ 347. Miniature hand vases (2) - cranberry
- \_\_\_ 348. Wide Panel epergne center lily - marigold
- \_\_\_ 349. Wide Panel epergne side lily - white
- \_\_\_ 350. M'burg Diamonds tumbler - marigold
- \_\_\_ 351. Central Terminal Buffalo, NY sov. glasses (2) - marigold
- \_\_\_ 352. Hobstar & Pinwheel creamer - marigold - self named, foreign?
- \_\_\_ 353. Four-Seventy-Four tumbler - marigold - new
- \_\_\_ 354. Three brandy sniffers (2 marigold, 1 smoke)
- \_\_\_ 355. Grape & Cable mid-size punch bowl base - purple

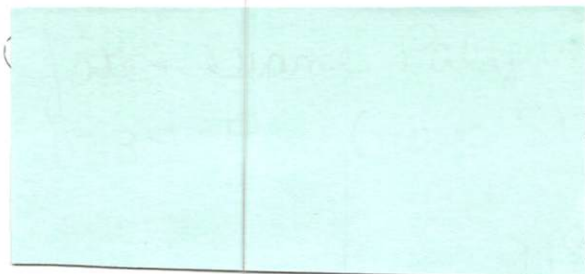


# Seeck Auctions

P.O. Box 377  
Mason City, Iowa 50402



FIRST CLASS



u  
est  
78