

BURNS
AUCTION SERVICE



**Great Lakes
Carnival Glass Club
GLASS BASH
Friday & Saturday,
November 3 & 4, 1995**

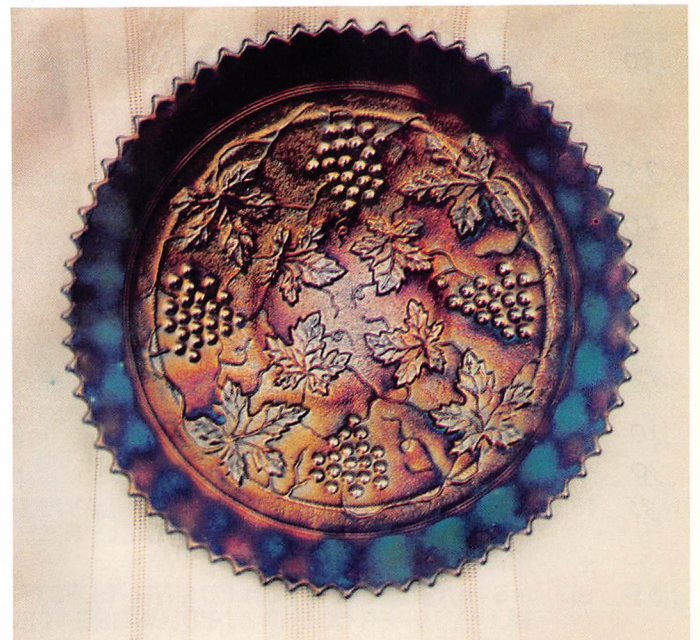
**Friday: 4 pm preview,
6:30 pm Auction, Lots 1-111**

**Saturday: 8 am preview,
10 am Auction, Lots 112-end**

at the **Best Western -
Midway Hotel**

**7711 W. Saginaw Ave.
Lansing, MI 48917
(Exit 93B off I-96)**

(517) 627-8471



Selling a selection of glass from the collection of Ray & Shirley Henry from Newark, New York in conjunction with the Great Lakes Carnival Glass Club's Glass Bash. The Henrys' have collected for years and years and I've known them for approx. 20 of them. One thing about these folks is that they're really *picky!* They are offering a nice bunch of glass with really nice color and irid. and very little damage.

The Best Western - Midway Hotel will host the event. It's located right off exit 93B of I-96 (Saginaw Ave.) in the southeast corner of Lansing. You can make your reservations by calling the motel direct at (517) 627-8471 or by contacting Maxine Burkhardt at (517) 627-7558 or Rod and JoAnn Sutfin at (517) 627-6997.

Mail Bids honored under the following conditions:

1. No deposit required. Bidders will take full responsibility to honor any and all bids we execute for them. Payment in full plus postage and handling required after notification and before we ship any item to them.
2. **Items are bid on in perfect condition with average or above average iridescence OR as listed in the brochures. Bids will not be carried out when damage on an item has been found during the auction.**
3. Successful bidders will be notified by collect call from the auctioneer **(so be sure to include phone number).**
4. Phone inquiries about the glass or any other questions are welcome.
5. All non-successful bidders will receive a result summary in the mail. Results of all mail bids will be provided.
6. If you have some other person at the auction bidding for you, they must pay for the item before taking it.
7. Mail and Phone bids due by Thursday, November 2, 1995.

Burns Auction Service

Tom Burns
109 E. Steuben St.
Bath, New York 14810
(607) 776-7942

Bill Richards
44 Water St.
Poland, Ohio 44514
(216) 757-2001

Bill Richards III
524 Poland Ave.
Struthers, Ohio 44471
(216) 755-2620

- | | | | |
|----------------|--|----------------|---|
| <u>35</u> 1. | Handled Beaded Bag - Gold | <u>140</u> 17. | N Singing Bird Handled Mug - Blue (scarce; nice color - has electric blue highlights) |
| <u>20</u> 2. | Handled Beaded Purse - Pur. | <u>175</u> 18. | N SINGING BIRD HANDLED MUG - GREEN (GREAT COLOR & SUPER IRID. - SUPER EXAMPLE) |
| <u>NS</u> 3. | 8" WESTMORELAND PEARLY DOTS DEEP ROUND BOWL - BLUE OPAL. (VERY SCARCE & DESIRABLE - NICE OPAL.) | <u>40</u> 19. | N Singing Bird Handled Mug - Amy. (scarce color) |
| <u>75</u> 4. | U.S. Glass Heart Band Handled Mug - Souvenir of Syracuse - Lt. Mari. (scarce pattern - enameling is light) | <u>70</u> 20. | N STIPPLED SINGING BIRD HANDLED MUG - DK. MARI. (VERY SCARCE WITH SUPER IRID.) |
| <u>75</u> 5. | WESTMORELAND FILE & FAN ROUND STEMMED COMPOTE - BLUE OPAL. (VERY SCARCE & DESIRABLE; BASE GLASS IS MILKY) | <u>35</u> 21. | N Singing Bird Handled Mug - Mari. (super irid.) |
| <u>50</u> 6. | Westmoreland 270 Stemmed Ruffled Compote - Blue Opal. (scarce & perfect) | <u>500</u> 22. | N DANDELION HANDLED MUG - PUR. (ABSOLUTELY SUPER IRID. - ONE OF THE BEST I'VE SEEN) |
| <u>25</u> 7. | Westmoreland Beaded Panels Squatty Ruffled Compote - Teal (scarce color) | <u>35</u> 23. | N Acorn Burr Punch Cup - White (very scarce with nice pink highlights) |
| <u>30</u> 8. | Westmoreland Estate Breakfast Open Sugar & Creamer - P. Opal. (This is the pair that appears in Sherman Hand's book #3, page 118; check in sugar handle) | <u>45</u> 24. | N G&C Stippled Punch Cup - Electric Blue (scarce; nice color & irid.) |
| <u>35</u> 9. | 8 1/4" Westmoreland Corinth 6 Ruffled Bowl - Dk. Mari. (scarce with great color & irid.) | <u>500</u> 25. | N DAISY & DRAPE FTD. FLARED VASE - AQUA OPAL. (RARE AND DESIRABLE; VERY PASTEL WITH GREAT IRID.) |
| <u>80</u> 10. | 8" WESTMORELAND DAISY WREATH ICE CREAM SHAPED BOWL - MARI/MILK GLASS (VERY SCARCE; NICE COLOR & IRID.) | <u>225</u> 26. | 13 1/2" N TREE TRUNK MID SIZE SWUNG VASE - GREEN (VERY SCARCE WITH SUPER IRID. - REALLY NICE) |
| <u>50</u> 11. | Westmoreland Corinth Jack in the Pulpit Vase - Lt. P. Opal. (scarce; light irid. & opal.) | <u>240</u> 27. | 7" N THIN RIB SQUATTY SWUNG VASE - ICE BLUE (A CUTIE WITH A GREAT SIZE & NICE IRID.) |
| <u>45</u> 12. | Westmoreland Corinth Jack in the Pulpit Vase - Teal | <u>85</u> 28. | N PILLAR RIB SWUNG VASE - AQUA OPAL. (WHAT MAKES THIS ONE RARE IS THAT THE FEET ARE PERFECT) |
| <u>20</u> 13. | N Memphis Punch Cup - Pur. | <u>20</u> 29. | N Pillar Rib Swung Vase - Olive Green (nice color & irid.) |
| <u>30</u> 14. | N Singing Bird Tumbler - Green (scarce; nice irid.) | <u>300</u> 30. | N LEAF & BEADS FTD. ROSE BOWL - AQUA OPAL. (SCARCE & VERY DESIRABLE - PERFECT WITH NICE MARI. OVERLAY) |
| <u>135</u> 15. | N SINGING BIRD HANDLED MUG - LAVENDER (VERY RARE BASE GLASS; REALLY NICE IRID.) | <u>200</u> 31. | N Leaf & Beads ftd. Rose Bowl - Blue (very scarce with really nice irid) |
| <u>100</u> 16. | N SINGING BIRD HANDLED MUG - ELECTRIC BLUE (SUPER COLOR & IRID. - A GREAT EXAMPLE) | <u>95</u> 32. | N Leaf & Beads ftd. Rose Bowl - Amy. (scarce with really nice irid. - a bit gold on one side) |

- 100 33. N Leaf & Beads ftd. Rose Bowl with Floral Interior - Green (very scarce; irid. a bit silvery)
- 40 34. N Leaf & Beads ftd. Rose Bowl with Floral Interior - Dk. Mari. (nice dark satiny finish)
- 165 35. **N FINE CUT & ROSES FTD ROSE BOWL WITH FANCY INTERIOR - ICE BLUE (RARE AND PERFECT - IRID. A BIT SILVERY)**
- 95 36. **N FINE CUT & ROSES FTD. ROSE BOWL - GREEN (VERY SCARCE WITH REALLY NICE IRID.)**
- 50 37. N Fine Cut & Roses Variant ftd. Rose Bowl with no Collar Base - Amy. (small check in one foot; odd tint; scarce item)
- 45 38. N Fine Cut & Roses ftd. Rose Bowl - Dk. Mari. (small buff on one foot; scarce; nice color)
- 320 39. **N HEART & FLOWERS STEMMED RUFFLED COMPOTE WITH RIBBED EXTERIOR - BLUE (RARE AND DESIRABLE WITH NICE MULTI COLORED IRID.)**
- 1600 40. **N HEART AND FLOWERS PLATE WITH RIBBED EXTERIOR - DK. MARI. (VERY RARE WITH SUPER IRID. - GREAT COLOR!)**
- 225 41. **N HEART & FLOWERS RUFFLED BOWL WITH RIBBED EXTERIOR - WHITE (VERY SCARCE & FROSTY WITH PINK HIGHLIGHTS)**
- 320 42. N G&C ftd. Hatpin Holder - Pur. (very scarce & desirable - top half is electric blue)
- 200 43. N G&C Large Dresser Tray - Pur. (scarce with nice blue & red highlights)
- 95 44. N G&C Cologne Bottle & Stopper - Dk. Mari. (nice color & irid. - very scarce)
- 1000 45. **N G&C VARIANT STIPPLED PLATE WITH RIBBED EXTERIOR - BLUE (VERY RARE AND DESIRABLE - HAS RED & BLUE HIGHLIGHTS)**
- 425 46. **N G&C LARGE BANDED STIPPLED FTD. FRUIT BOWL - ELECTRIC BLUE (EXTREMELY RARE AND DESIRABLE - REALLY NICE IRID.)**
- 110 47. **N G&C FTD. FRUIT BOWL WITH STRAIGHT UP SIDES - DK. MARI. (SUPER SCARCE WITH NICE DARK COLOR & IRID.)**
- 85 48. N G&C Cup & Saucer (6" Plate with Basketweave Exterior) - Pur. (scarce set; nice color)
- 80 49. N G&C Candlestick - Electric Green (super color and irid.)
- 800 50. **N G&C 2 PC. CANDLELAMP WITH BRACKET - DK. MARI. (VERY RARE AND DESIRABLE; NICE DARK SATINY COLOR)**
- 180 51. N G&C Covered Sweetmeat Compote - Pur. (scarce; nice color & irid. & perfect)
- 100 52. N G&C Sweetmeat Compote Whimsey - Pur. (very scarce and underpriced - nice color)
- 180 53. N G&C Water Pitcher - Green (very rare color - a nice item; small ding on top of handle)
- 45 54. N G&C Tumbler - Green (nice color & irid.)
- 350 55. **N G&C COVERED BUTTER DISH - GREEN (SUPER, SUPER COLOR & IRID. - GREAT ITEM)**
- 350 56. N G&C 7pc. Water Set - Pur. (scarce set; nice color & irid.)
- 20 57. N G&C Tankard Tumbler - Amy. (scarce & underpriced)
- 20 58. N G&C Standard Flared Tumbler - Pur. (odd size - bright red & blue highlights)
- 80 59. **N DOUBLE LOOP CHALICE OR OPEN SUGAR - AQUA OPAL. (RARE WITH NICE MARI. OVERLAY - VERY UNDERPRICED)**
- 260 60. **N RIBBED TORNADO VASE - PUR. (RARE WITH GREAT COLOR; 2 SPOTS OF MANUF. PEELING - NOT THAT BAD)**
- 90 61. N Ribbed Jesters Cap with Tri Cornered top - Green (very scarce item - a scarce shape)
- 120 62. N Three Fruits Plate with Basketweave Exterior - Pur. (very scarce; has nice irid. with this exterior)
- 95 63. 7 1/2" N Fruit & Flowers Handgrip Plate with Basketweave - Amy. (scarce; really nice satiny finish!)
- 300 64. **N EMBROIDERED MUMS RUFFLED BOWL WITH RIBBED EXTERIOR - BLUE (RARE AND DESIRABLE - HAS GOLD HIGHLIGHTS)**
- 325 65. **N GRAPE & GOTHIC ARCHES 4 PC. TABLE SET - BLUE (A RARE AND VERY DESIRABLE SET WITH NICE IRID. - BUTTER & CREAMER ARE GREAT)**
- 425 66. **N ROUND BUSHEL BASKET - PASTEL LAVENDER (SUPER BASE GLASS COLOR & GREAT IRID. - VERY DIFFERENT)**
- 90 67. N Round Bushel Basket - Blue (has elec. blue highlights - nice)
- 100 68. **N ROUND BUSHEL BASKET - VIOLET (RARE COLOR; NICE AVERAGE IRID.)**
- 100 69. N Eight Sided Bushel Basket - Pastel Mari. (very scarce; super pink highlights)
- 500 70. **N ROSE SHOW RUFFLED BOWL - MARI. (VERY SCARCE & DESIRABLE; NICE & PERFECT)**
- 290 71. **N ROSE SHOW RUFFLED BOWL - WHITE (SCARCE & PERFECT; IRID. A BIT LIGHT)**
- 400 72. **N PEACOCKS PLATE WITH RIBBED EXTERIOR - DK. MARI. (SUPER, SUPER COLOR & IRID.; VERY ATTRACTIVE)**
- 300 73. **N PEACOCK AT THE URN LARGE ICE CREAM BOWL - MARI. (VERY SCARCE & DESIRABLE; VERY NICE)**
- 25 x 6 74. (6) N Peacock at the Fountain Tumblers - Blue (some are super - selling choice!)
- 130 75. N Peacock at the Fountain Water Pitcher - Dk. Mari. (super irid. & nice; has small chip on collar base)
- 45 3076. (2) N Peacock at the Fountain Tumblers - Dk. Mari. (super color & irid. - selling choice)
- 150 77. **N MEMPHIS 8 PC. FRUIT BOWL SET - DK. MARI. (SUPER SET WITH GREAT COLOR - NICE SET; SMALL FLAKE ON INSIDE)**
- 250 78. N Grape Arbor 5 pc. Tankard Water Set - Pastel Mari. (lighter base glass with super irid. - really nice)
- 70 x 4 79. (4) N Wishbone Tumblers - Dk. Mari. (a super set of 4 - selling choice)
- 500 80. **N RASPBERRY 7 PC. WATER SET - PUR. (A VERY ATTRACTIVE SET WITH GREAT IRID.)**
- 650 81. **N RASPBERRY 5 PC. WATER SET - GREEN (RARE AND DESIRABLE SET - NICE IRID.)**
- 160 82. **N RASPBERRY MILK PITCHER - PUR. (SCARCE COLOR WITH NICE IRID.)**
- 275 83. **N RASPBERRY MILK PITCHER - GREEN (VERY SCARCE; REALLY NICE COLOR & IRID.)**
- 60 84. N Raspberry Flared Tumbler - Pur. (has Electric Blue irid. - a super example)
- 35 85. N Raspberry Tumbler - Dk. Mari. (super, super irid.)
- 40 86. N Acorn Burr Tumbler - Etched "Bertha - 1914" - Green (scarce item)
- 65 87. N Acorn Burr Tumbler - Pur. (scarce; red & blue highlights)
- 45 88. N Oriental Poppy Tumbler - Green (scarce; average irid.)
- 40 89. N Oriental Poppy Tumbler - Pur. (scarce; great irid.)

- 550 90. N GOOD LUCK PLATE WITH BASKETWEAVE EXTERIOR - GREEN (EXCELLENT EXAMPLE WITH NICE BRIGHT SATINY FINISH - NICE)
- 185 91. N Good Luck Plate with Basketweave Exterior - Mari. (very scarce & satiny - has large manuf. flaw on edge)
- 160 92. N GOOD LUCK STIPPLED BOWL WITH PIE CRUST EDGE & RIBBED EXTERIOR & NARROW BASE - BLUE (SCARCE AND ATTRACTIVE - RED & BLUE HIGHLIGHTS)
- 285 93. N GOOD LUCK BOWL WITH PIE CRUST EDGE & BASKETWEAVE EXTERIOR - PUR. (AN EXCELLENT EXAMPLE - HAS BRIGHT MULTI COLORED HIGHLIGHTS)
- 200 94. N Good Luck Bowl with Pie Crust Edge & Ribbed Exterior - Dk. Mari. (super, super example with pink highlights)
- 160 95. N Good Luck Ruffled Bowl with Ribbed Exterior - Blue (very scarce & desirable - red highlights)
- 35 96. N Peach Tumbler - Blue (scarce; nice irid.)
- 45 97. N Dandelion Tumbler - Pur. (nice red & blue irid.)
- 45 98. N Greek Key Tumbler - Amy. (scarce; pinhead on pattern)
- 20 99. N Concave Diamond Tumbler - Celeste Blue (nice color & irid.)
- 450 100. M'BURG COUNTRY KITCHEN COVERED BUTTER DISH - AMY. (EXTREMELY RARE & VERY DESIRABLE; TINY NICK UNDER ONE POINT OF BASE)
- 300 101. M'BURG HANGING CHERRIES COVERED BUTTER DISH - AMY. (VERY SCARCE & DESIRABLE; MANUF. PEELING NEAR FINIAL)
- 25 102. M'burg Hobstar & Feather Punch Cup - Amy. (scarce)
- 150 103. 9 1/2" M'BURG SWIRL HOBNAIL SWUNG VASE - PUR. (RARE AND DESIRABLE; NICE IRID.)
- 220 104. M'BURG SWIRL HOBNAIL ROSE BOWL - MARI. (RARE AND DESIRABLE DARK COLOR; LIGHT IRID.)
- 425 105. 10 1/4" M'BURG SEAWEED LARGE BOWL WITH 3 IN 1 EDGE - AMY. (RARE AND DESIRABLE - NICE MULTI COLORED IRID.)
- 375 106. 10 1/4" M'BURG SEAWEED BOWL WITH 3 IN 1 EDGE - MARI. (VERY SCARCE & DESIRABLE WITH NICE SATINY FINISH)
- 425 107. 9 1/2" M'BURG NESTING SWAN 6 RUFFLED BOWL - AMY. (RADIUM AND A BEAUT; GETS A BIT LIGHTER ON EDGE)
- 350 108. M'BURG DIAMOND 5 PC. WATER SET - AMY. (VERY SCARCE SET; TUMBLERS ARE REALLY NICE)
- 180 109. CAMBRIDGE INVERTED FEATHER COVERED CRACKER JAR - GREEN (VERY SCARCE WITH NICE COLOR & IRID. - PRETTY!)
- 225 110. CAMBRIDGE DOUBLE STAR WATER PITCHER - GREEN (VERY SCARCE & DESIRABLE; RADIUM FINISH)
- 45 111. Cambridge Double Star Tumbler - Green (scarce; nice color)
- 1200 115. IMPERIAL LUSTRE ROSE 5 PC. WATER SET - PUR. (EXTREMELY RARE WITH SUPER IRID. - NICE)
- 425 116. IMPERIAL DIAMOND LACE 7 PC. WATER SET - PUR. (OUTSTANDING COLOR & IRID. - A BEAUT)
- 140 117. Imperial Fashion 7 pc. Water Set - Dk. Mari. (super color & irid.)
- 50 118. Imperial Fieldflower Tumbler - Violet Blue (rare and desirable color)
- 40 119. Imperial Crab Claw Tumbler - Dk. Mari. (scarce; nice irid.)
- 400 120. IMPERIAL FLORAL & OPTIC ROUND FTD. BOWL - RED (GREAT COLOR & IRID. - NICE STRETCH EFFECT & VERY ATTRACTIVE)
- 125 121. Imperial Octagon 7 pc. Small size Water Set - Dk. Mari. (scarce with nice color & irid.)
- 85 122. Imperial Octagon Wine Decanter & Stopper - Mari. (nice color & irid.)
- 350 123. IMPERIAL OPTIC & BUTTON CUP & SAUCER WITH IRON CROSS - DK. MARI. (EXTREMELY RARE ITEM, NOT MANY SETS KNOWN - SUPER COLOR - MINOR ROUGHNESS ON EDGE OF SAUCER)
- 450 124. 7 1/2" TALL X 4 1/4" BASE IMPERIAL ZIPPER LOOP KEROSENE LAMP - MARI. (RARE SIZE & HAS REALLY NICE COLOR & IRID.)
- 475 125. IMPERIAL HOMESTEAD (SIGNED NUART) CHOP PLATE - HELIOS GREEN (VERY RARE & DESIRABLE - SIGNED; HAS HELIOS FINISH)
- 175 126. IMPERIAL LOGANBERRY VASE - GREEN (VERY SCARCE AND ABOVE AVERAGE COLOR & IRID.)
- 5 127. Imperial Wide Panel Punch Cup - Green
- 225 128. 8 1/2" JENKINS FIELD THISTLE SWUNG VASE - LT. MARI. (RARE PATTERN; VERY DESIRABLE - A REALLY TOUGH ITEM)
- 375 129. 9 1/4" EUROPEAN FOUR FLOWERS VARIANT FLAT PLATE - PUR. (VERY RARE AND DESIRABLE; HAS MANUF. GROUND BASE)
- 725 130. 9 1/2" FENTON HOLLY PLATE - GREEN (RARE AND VERY DESIRABLE; SUPER IRID. - NICE!)
- 650 131. 9 1/2" FENTON HOLLY PLATE - AMY. (ANOTHER SUPER SCARCE ITEM WITH NICE SATINY FINISH)
- 255 132. 9 1/2" FENTON HOLLY FLAT PLATE - WHITE (SUPER BRIGHT IRID.; ONE OF THE BETTER EXAMPLES)
- 25 133. Fenton Holly 8 Ruffled Bowl - Mari.
- 275 134. FENTON HOLLY 6 RUFFLED HAT - RED (RARE & DESIRABLE; GOLD HIGHLIGHTS)
- 200 135. FENTON THREE ROW OPEN EDGE LARGE SQUARE RUFFLED BOWL - ICE GREEN (RARE AND DESIRABLE ITEM; IRID. IS A BIT LIGHT)
- 210 136. FENTON TWO ROW OPEN EDGE 6 RUFFLED HAT - ICE GREEN (SUPER EXAMPLE WITH GREAT IRID. - ATTRACTIVE)
- 150 137. FENTON TWO ROW LARGE SIZE 6 RUFFLED HAT - WHITE (VERY SCARCE & FROSTY, SUPER IRID. - NICE!)
- 300 138. FENTON TWO ROW 6 RUFFLED HAT - RED (SUPER, SUPER COLOR & IRID. - LOOKS RED!)
- 600 139. 7" TALL FENTON BLACKBERRY 2 ROW OPEN EDGE WHIMSEY SWUNG VASE - LT. MARI. (EXTREMELY RARE ITEM; HAS SMALL CHIP ON BASE)

START OF SECOND SESSION

- 10 112. Corning Pyrex #662 Insulator - Dk. Mari.
- 55 113. Pair Imperial Premium Candlesticks - Mari.
- 45 114. Imperial Wide Panel Ruffled Sauce in English Metal Frame - Mari. (a cute set)

- 290 140. **FENTON 2 ROW OPEN EDGE BLACKBERRY SQUARE HAT - RED (RARE AND DESIRABLE - NICE SATINY FINISH)**
- 475 141. **FENTON ORANGE TREE STANDARD FLARED MUG - RED (RARE & DESIRABLE - VERY NICE EXAMPLE)**
- 45 142. Fenton Orange Tree Standard Flared Mug - Amy. (very scarce color for this pattern)
- 35 143. Fenton Orange Tree Standard Flared Mug - Amber (rare color - lacks a bit of detail)
- 65 144. Fenton Orange Tree Standard Flared Mug - Mari. / Vaseline (scarce; nice base glass color)
- 55 145. Fenton Orange Tree Standard Flared Mug - Blue (nice color)
- 227 146. Fenton Orange Tree Standard Flared Mug - Dk. Mari. (super color)
- 125 147. **FENTON ORANGE TREE FLARED SHAVING MUG - AQUA (SUPER RARE ITEM; A REALLY NICE EXAMPLE)**
- 45 148. Fenton Orange Tree Flared Shaving Mug - Blue (super color & detail)
- 95 149. Fenton Miniature Blackberry Stemmed Compote - Blue (really nice example)
- 290 150. **FENTON LOTUS & POINSETTIA FTD. RUFFLED SAUCE - RED/AMBERINA (AMBERINA BASE GLASS WITH RED SWIRLS - REALLY NEAT!)**
- 105 151. Fenton Lotus & Poinsettia ftd. Ruffled Sauce - Aqua (very scarce color - nice irid. & detail)
- 65 152. Fenton Lotus & Poinsettia ftd. Ruffled Sauce - Mari. / Vaseline (scarce with nice overlay)
- 190 153. **FENTON LITTLE FISHES FTD RUFFLED SAUCE - AQUA (VERY RARE COLOR; NICE DETAIL & IRID.)**
- 100 154. Fenton Little Fishes ftd. Ruffled Sauce - Amy. (very scarce color)
- 235 155. **FENTON ROSE SPRAY STEMMED JACK IN THE PULPIT COMPOTE - ICE GREEN (VERY SCARCE; NICE COLOR)**
- 200 156. **FENTON ROSE SPRAY STEMMED JACK IN THE PULPIT COMPOTE - CELESTE BLUE (RARE AND VERY ATTRACTIVE; NICE ITEM)**
- 225 157. Fenton Rose Spray Stemmed Jack in the Pulpit Compote - White (very scarce & very attractive - nice item)
- 20 158. Fenton Rose Spray Stemmed Jack in the Pulpit Compote - Clear Opal. (not carnival; great opal. - nice!)
- 50 159. Fenton Rose Spray Stemmed 6 Ruffled Compote - Mari. (scarce; nice color)
- 45 160. Fenton Rose Spray Stemmed Goblet Shaped Compote - Mari. (super detail; nice)
- 75 161. **FENTON FLORAL & GRAPE TUMBLER - GREEN (RARE AND UNDERPRICED - REALLY NICE EXAMPLE)**
- 220 162. **FENTON FLORAL & GRAPE BULBOUS WATER PITCHER - BLUE (VERY SCARCE AND DESIRABLE; HAS ELECTRIC BLUE HIGHLIGHTS)**
- 35 163. Fenton Floral & Grape Tumbler - Blue (scarce; nice)
- 55 164. Fenton 10 Mums Tumbler - Blue (very scarce; really nice color & irid.)
- 225 165. **9 3/4" FENTON FINE RIB SWUNG VASE - RED/AMBERINA (RARE AND DESIRABLE - HAS ALTERNATING RED & YELLOW STRIPES)**
- 70 166. 13" Fenton Fine Rib Mid size Swung Vase - Amber (rare color & irid. - very nice item)
- 35 167. 15 3/4" Fenton Rustic Mid size Swung Vase - Blue (great color & irid. - very attractive)
- 80 168. 9 3/4" Fenton Rustic Standard Swung Vase - White (frosty & nice)
- 125 169. Fenton Lattice & Grape 7 pc. Tankard Water Set - Mari. (scarce set)
- 350 170. **FENTON G&C LARGE SIZE FTD. RUFFLED FRUIT BOWL - GREEN (SATINY FINISH; A SUPER RARE SIZE AND COLOR FOR THIS ITEM)**
- 230 171. Fenton Vintage Grape Large size Single Lily Epergne - Green (rare size for this item - silvery base)
- 130 172. Fenton Vintage Grape Small size Single Lily Epergne - Dk. Mari. (very scarce; nice color & irid.)
- 50 173. Fenton ftd. Orange Tree Tumbler - Blue (scarce; good feet)
- 45 174. Fenton ftd. Orange Tree Tumbler - Dk. Mari. (nice color & irid. - good feet)
- 95 175. **FENTON PERSIAN MEDALLION ROSE BOWL - WHITE (VERY SCARCE; NICE FROSTY IRID.)**
- 125 176. Fenton Orange Tree Breakfast Open Sugar & Creamer - White (super pair; matched & frosty - attractive)
- 250 177. **9 1/4" FENTON LEAF CHAIN FLAT PLATE WITH BERRY EXTERIOR - WHITE (SUPER BLUE & RED IRID. - REALLY NICE)**
- 70 178. 8 3/4" Fenton Leaf Chain 6 Ruffled Bowl - White (scarce; nice irid.)
- 110 179. 8 1/2" Fenton Orange Tree 6 Ruffled Bowl - White - has Ice Blue tint (really odd base glass - looks bluish)
- 260 180. **FENTON FLOWERS FTD. ROSE BOWL - WHITE (ONE OF THE 1ST PERFECT ONES I'VE SEEN!)**
- 60 181. Fenton Flowers ftd. Rose Bowl - Blue (rare and desirable; pinhead on tip of one toe)
- 330 182. **FENTON ORANGE TREE FTD. HATPIN HOLDER - BLUE (SUPER COLOR AND IRID. - GREAT COLOR!)**
- 45 183. Fenton Blackberry Spray Ruffled Hat - Lime Green / Mari. (odd tint - nice!)
- 75 184. Fenton Banded Blackberry Ruffled Hat - Mari. / Moonstone (very scarce and desirable)
- 150 185. **FENTON STAG AND HOLLY GIANT FTD. ROSE BOWL - MARI. (RARE AND VERY DESIRABLE; REALLY NICE IRID.)**
- 150 186. Fenton Horsehead Medallion ftd. Rose Bowl - Dk. Mari. (scarce with nice color and detail)
- 50 187. 7" Fenton Lotus and Grape Ball ftd. Ruffled Bowl - Mari. / Vaseline (nice color)
- 110 188. **2 1/2" TALL FENTON KITTENS TOOTHPICK HOLDER - DK. MARI. (GREAT COLOR; VERY DESIRABLE)**
- 45 189. Fenton Butterfly and Berry Tumbler - Blue
- 180 190. **FENTON PEACOCK AND GRAPE SPATULA FTD. RUFFLED BOWL - LIME GREEN OPAL. (SUPER EXAMPLE WITH NICE OPAL. AND IRID. - PINHEAD ON ONE KNOB)**
- 65 191. Fenton Cherry Circles 2 Sided 2 Handled Large Handled Bon Bon - Aqua (extremely rare; has chip on underside of edge)
- 60 192. Fenton Lotus and Grape 2 Handled 2 Sided Bon Bon - Red / Amberina (rare and very desirable; 1/4" chip on edge)
- 200 193. **FENTON VINTAGE GRAPE FTD. FERNERY - RED / AMBERINA (LIGHT COLOR WITH BRIGHT IRID. - NICE)**
- 275 194. 6" Fenton Garden Mums Flat Plate with Enamelled Advert. - Amy. (very scarce; nice detail)

- 195 195. **6 1/4" FENTON PINE CONE FLAT PLATE WITH PANEL EXTERIOR - GREEN (RARE AND VERY DESIRABLE - NICE RED AND GOLD IRID.)**
- 550 196. (2) Fenton Stretch Dresser Bottles with Enamelled Deco Decoration - Pink (super items with great dec- or - very attractive)
- 100 197. (2) Fenton Stretch Square Dresser Bottles (one hand lotion, one astrigent) - Mari. (super pair - ap- pears on pg. 150 of Hands Encyclopedia or Book #3)
- 260 198. Fenton Stretch Square Dresser Bottle - Celeste Blue (super color and perfect)
- 110 199. Fenton Stretch Round Dresser Jar - Mari. (very scarce)
- 80 200. Fenton Butterfly and Berry Butter Base Only - Blue
- 40 201. Fenton Butterfly and Berry Butter Base Only - Dk. Mari.
- 70 202. Fenton Pastel Swan - Lime Ice Green (nice color)
- 45 203. Dugan S Repeat Whimsey Creamer from Punch Cup - Pur. (scarce item; nice)
- 20 204. Dugan Floral and Grape Jack in the Pulpit Tumbler Whimsey - Lt. Mari.
- 675 205. **8 3/4" DUGAN FANCIFUL PLATE, SLIGHT- LY TURNED UP - PUR. (ABSOLUTELY SUP- ER, SUPER IRID. - FANTASTIC!!)**
- 400 206. **8 3/4" DUGAN APPLE BLOSSOM TWIGS PLATE - PUR. (SUPER IRID. - RED HIGHLIGHTS - REAL- LY NICE)**
- 120 207. **9 1/4" DUGAN APPLE BLOSSOM TWIGS PLATE - WHITE (SUPER IRID.; GREAT COLOR AND DE- TAIL; NICE)**
- 140 208. **8 3/4" DUGAN FANCIFUL PLATE - WHITE (VERY SCARCE AND DESIRABLE WITH GOLD HIGHLIGHTS)**
- 150 209. 8 3/4" Dugan Round Up Low Ruffled Bowl / Plate - White (very scarce; super irid.)
- 190 210. **8 3/4" DUGAN ROUND UP FLAT PLATE - BLUE (RARE AND DESIRABLE; HAS SILVERY HIGH- LIGHTS)**
- 135 211. 6" Dugan Cherries Crimped Edge Plate with Jew- elled Heart Exterior - Pur. (rare plate; nice color and irid.)
- 80 212. 6 1/2" Dugan Four Flower Flat Plate - P. Opal. (sup- er scarce with really nice opal. - flat)
- 65 213. 7" Dugan Fishscale and Beads Crimped Edge Plate - P. Opal. (very scarce with great color and opal. - nice!)
- 35 214. 7" Dugan Fishscale Low 8 Ruffled Bowl - P. Opal. (scarce color for this item - not often seen)
- 125 215. **DUGAN HONEYCOMB ROSE BOWL - P. OPAL. (SUPER IRID. AND VERY BRIGHT - SUPER EX- AMPLE)**
- 60 216. 11" Dugan Ski Star Large 6 Ruffled Bowl with Com- pass Exterior - P. Opal. (nice color and opal.)
- 40, 30 217. (2) Dugan Ski Star 8 Ruffled Individual Berry Bowls - P. Opal. (selling choice - one is darker)
- 40 218. Dugan Folding Fan Ruffled Crimped Edge Com- pote - P. Opal. (scarce pattern and nice opal.)
- 50 219. 5 1/2" Tall Dugan Ribbed Pinched In Spittoon Shaped Vase - P. Opal. (nice dark color and opal. - nice shape)
- 45 220. 10 1/2" Dugan Target Swung Vase - Dk. P. Opal. (super, super example; great color)
- 70 221. 12" Dugan Target Swung Vase - White (super frosty and nice)
- 140 222. **12" DUGAN PULLED LOOP SWUNG VASE - WHITE (SUPER IRID. - VERY SCARCE ITEM IN THIS COLOR)**
- 15 223. 12" Dugan Spiral Swung Vase - White (scarce; nice color and irid.)
- 85 224. 9 3/4" Dugan Big Basketweave Swung Vase - White (rare; very frosty with great irid.)
- 70 225. 10" Dugan Lined Lattice Swung Vase - White (super irid. and very attractive)
- 65 226. 6 3/4" Dugan Vining Twigs and Daisy Swung Vase - White (super frosty)
- 95 227. Dugan Vining Twigs Flared Ruffled Hat - White (frosty and attractive)
- 125 228. Dugan Grape Delight 6 ftd. Ruffled Rose Bowl - White (super irid.)
- 50 229. Dugan Constellation Stemmed Ruffled Compote - White (scarce; frosty and nice)
- 210 230. **DUGAN DAHLIA FTD. COVERED BUTTER DISH - WHITE (RARE & DESIRABLE; SUPER GOLD DECOR.)**
- 200 231. Dugan Maple Leaf 4 pc. Table Set - Dk. Mari. (scarce set; nice)
- 155 232. Dugan Daisy and Lattice 7 pc. Tankard Water Set - Dk. Mari. (nice color; pitcher sits crooked)
- 120 233. Dugan Vineyard 7 pc. Water Set - Dk. Mari. (super pitcher - nice and dark!)
- 170 234. **DUGAN PEACOCK AT THE FOUNTAIN WATER PITCHER - BLUE (SCARCE; NICE DETAIL; AV- ERAGE IRID.)**
- 170 235. **DUGAN FISHERMANS HANDLED MUG - LT. AMY OR HOREHOUND (VERY RARE EXAMPLE IN THIS COLOR; SUPER DETAIL)**
- 110 236. **DUGAN FISHERMANS HANDLED MUG - DK. PUR. (SUPER, SUPER IRID. AND DETAIL - RE- ALLY NICE)**
- 100 237. **DUGAN BEADED SHELL HANDLED MUG - DK. MARI. (SUPER DARK EXAMPLE - ONE OF THE BEST!)**
- 80 238. Dugan Beaded Shell Handled Mug - Blue (scarce and has pretty nice irid.)
- 40 239. Dugan Beaded Shell Handled Mug - Amy. (scarce; irid. gets a bit silvery)
- 200 240. **11 1/4" DUGAN VICTORIAN LARGE 6 RUFFLED BOWL - PUR. (RARE AND DESIRABLE - NICE SATINY GOLD FINISH)**
- 225 241. **DUGAN FLORAL AND GRAPE 6 PC. BULBOUS WATER SET - AMY. (VERY NICE SET WITH EX- CELLENT IRID. - VERY SCARCE)**
- 120 242. **DUGAN NAUTILUS NOVELTY CREAMER - PUR. (SUPER SCARCE WITH SUPER IRID. - VERY NICE)**
- 370 243. **DUGAN MAPLE LEAF 7 PC. WATER SET - PUR. (VERY SCARCE; AND UNDERPRICED SET - RE- ALLY NICE)**
- 30 244. Dugan Tree of Life Small Handled Flower Basket - Mari. (nice)
- 45 245. Dugan Handled Beaded Basket - Amy. (scarce; sil- very)
- 30 246. Dugan Handled Beaded Basket - Mari.
- 35 247. Dugan Big Basketweave Handled Flower Basket - Mari. (scarce)
- 60 248. Dugan Plain Hat Handled Flower Basket Whimsey, Enamelled "Souvenir Indiana Fair 1923" - Mari. (re- ally unusual; probably Indiana, Pa.)
- 45 249. Dugan Ramber Rose Tumbler - Blue (super irid. - nice!)

- 35 250. (2) Dugan Grapevine Lattice Tumblers - Pur. (satiny; selling choice)
- 25 25 251. (2) Dugan Stork and Rushes Tumblers with Beaded Top - Blue (super examples - selling choice)
- 20 252. Dugan Stork and Rushes Tumbler with Lattice Band - Dk. Mari.
- 20 253. Dugan Stork and Rushes Tumbler with Beaded Top - Mari.
- 170 254. SURPRISE! *Bought tumbler - blue*
- 30 255. SURPRISE! *" " - mariposa*
- 25 *Strawberry bowl* *tumbler - blue*

EXTRA ITEMS

TO BE SOLD WITH RELATED ITEMS

- 650 1X N IVY TOWN PUMP - PUR. (VERY RARE AND DESIRABLE; NICE COLOR AND ABOVE AVERAGE IRID.)
- 300 2X N DRAPERY SWUNG VASE - AQUA OPAL. (VERY RARE AND VERY DESIRABLE; NICE OPAL. WITH A TOUCH OF MARI. OVERLAY; VERY SLIGHT BIT OF ROUGHNESS ON TOES)
- 300 3X N THREE FRUITS STIPPLED RUFFLED BOWL WITH RIBBED EXTERIOR - WHITE (AN EXCELLENT EXAMPLE WITH NICE IRID. - VERY SCARCE AND VERY UNDERPRICED)
- 100 4X N G & C Individual Ice Cream Bowl with Basketweave Exterior - White (a rare item with really nice irid.)
- 950 5X N DAISY AND DRAPE FTD. FLARED VASE - ELEC. BLUE (RARE & EXTREMELY DESIRABLE; REALLY NICE COLOR & EXCELLENT IRID.)

625 6X

N HEART AND FLOWERS STEMMED RUFFLED COMPOTE WITH PLAIN EXTERIOR - ICE BLUE (RARE AND VERY DESIRABLE; HAS SUPER IRID. - ONE OF THE BETTER EXAMPLES I'VE SEEN)

600 7X

N THREE FRUITS MEDALLION SPATULA FTD. RUFFLED BOWL, NOT STIPPLED - DK. ICE GREEN (VERY RARE AND DESIRABLE, ESPECIALLY WITHOUT THE STIPPLED EFFECT; GREAT COLOR AND IRID. - VERY NICE)

1150 8X

DUGAN FORMAL HATPIN HOLDER - DK. MARI. (VERY RARE AND VERY DESIRABLE - GREAT COLOR AND WONDERFUL IRID.)

750 9X

M'BURG TROUT AND FLY SQUARE BOWL - MARI. (VERY RARE SHAPE FOR A POPULAR ITEM - HAS NICE AVERAGE SATINY FINISH)

100 10X

N Strawberry Plate with Basketweave Exterior - Pur. (scarce; nice satiny finish)

300 11X

FENTON DRAGON AND LOTUS RUFFLED BOWL - BLUE (UNBELIEVABLE ITEM WITH A BRILLIANT RADIUM FINISH - ONE OF ONLY 2 OR 3 I'VE EVER HEARD OF!)

3600 12X

DUGAN FARMYARD BOWL WITH 3 IN 1 EDGE - PUR. (VERY RARE AND EXTREMELY DESIRABLE; HAS SILVERY / GOLD IRID.; PERFECT AND RARE)

MAY BE A FEW MORE...

Notes

