



BURNS

AUCTION SERVICE

Lincoln Land Carnival Glass Club Annual Convention Auction

**Friday & Saturday,
June 9 & 10, 1995**

Friday: Auction 6 pm, Preview 4 pm, Lots 1-165
Saturday: Auction 9 am, Preview 8 am, Lots 166-end

at the

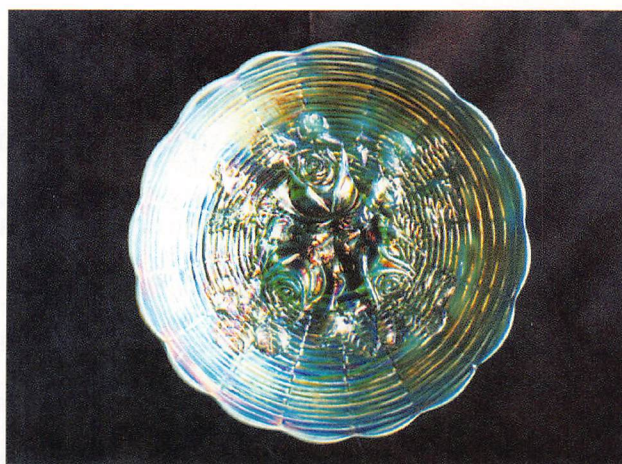
**Best Western Midway
Hotel - Airport**

5105 S. Howell Ave.

(Exit 318 off I-94 then Howell Ave. Exit)

Milwaukee, Wisconsin 53207

(414) 769-2100



Once again we are pleased to present the auction for the annual Lincoln Land Carnival Glass Club Convention. This year we are presenting the collection of Ted Perry from Seattle Washington. He specialized in Advertising, Kittens, and of course his BIG VASES. Hope you're able to attend - it'll be well worth your time - and a great time too!

The Best Western Midway Hotel - Airport will host the event again. They have been very accommodating in the past and we're sure they'll be top notch again. Rooms are already going fast but there are several other motels available locally. So, if you have any questions you can call convention chairman Rick Kojis at (414) 327-0321. Hope to see ya there!

Mail bids due by Thursday, June 8, 1995. *MAID BIDDERS MUST BE PATIENT! Tom will be in transit to the Northern California Convention.*

Burns Auction Service

Tom Burns
109 E. Steuben St.
Bath, New York 14810
(607) 776-7942

Bill Richards
44 Water St.
Poland, Ohio 44514
(216) 757-2001

Bill Richards III
524 Poland Ave.
Struthers, Ohio 44471
(216) 755-2620

Mail Bids honored under the following conditions:

1. No deposit required. Bidders will take full responsibility to honor any and all bids we execute for them. Payment in full plus postage and handling required after notification and before we ship any item to them.
2. **Items are bid on in perfect condition with average or above average iridescence OR as listed in the brochures. Bids will not be carried out when damage on an item has been found during the auction.**
3. Successful bidders will be notified by collect call from the auctioneer (so be sure to include phone number).
4. Phone inquiries about the glass or any other questions are welcome.
5. All non-successful bidders will receive a result summary in the mail. Results of all mail bids will be provided.
6. If you have some other person at the auction bidding for you, they must pay for the item before taking it.
7. Mail bids due by Thursday, June 8, 1995.

- ___ 1. Assortment of 6 Buttons - Dark
- ___ 2. Horsehead Medallion Bolo Necktie - Mari.
- ___ 3. Top O' the Walk & Cattails Hatpins - Dark (selling choice)
- ___ 4. Welch Paperweight - Dark (scarce item)
- ___ 5. **1908 ST. PAUL, MINN. SHEATH OF WHEAT SHRINERS TOOTHPICK HOLDER - RUBY GOLD (RARE AND VERY DESIRABLE ITEM WITH GREAT GOLD)**
- ___ 6. 1908 St. Paul, Minn. Shriners Champagne Glass - Clear
- ___ 7. 1909 Louisville, Ky. Shriners Champagne Glass - Clear
- ___ 8. 1910 New Orleans Shriners Champagne Glass - Clear
- ___ 9. 1911 Rochester, N.Y. Shriners Champagne Glass - Clear
- ___ 10. **1910 NEW ORLEANS SHRINERS 2 HANDLED LOVING CUP - GOLD FLASH (VERY UNUSUAL ITEM; I HAVEN'T SEEN ANOTHER)**
- ___ 11. Novelty Ladies High Heeled Shoe - Mari. (very scarce novelty)
- ___ 12. Novelty Pipe Match Holder - Mari.
- ___ 13. Novelty Canoe "Souvenir of New York" - Lt. Mari.
- ___ 14. Novelty ftd. Witches Kettle with Wire Handle - Lt. Mari. (scarce; "Souvenir Bertha, Minn."; chipped)
- ___ 15. **NOVELTY SCHOOL BELL "GRACEVILLE, MINN." - MARI. (RARE ITEM WITH PRETTY NICE IRID.)**
- ___ 16. **UNUSUAL MINIATURE LAMP & SHADE WITH WIRE FINGER HOLDER - DK. MARI. (I DON'T RECALL SEEING ANOTHER; REALLY RARE)**
- ___ 17. Miniature Novelty Cup "Souvenir, Springhill, N.S." - Ruby Flash
- ___ 18. Fostoria Brocaded Palms 2 sided 2 Handled Bon Bon - Pink
- ___ 19. Pair Automobile Head Light Reflectors - Lt. Mari. (so much per each for the pair; unusual items)

- 16500 20. **N ROSE SHOW PLATE - DK. MARI./ CUSTARD (ABSOLUTELY FANTASTIC ITEM; GREAT DARK COLOR; HAS TO BE ONE OF THE BEST)**
- 10750 21. **N ROSE SHOW PLATE - ICE GREEN OPAL. (ANOTHER EXTREMELY RARE ITEM WITH GREAT COLOR AND IRID.; VERY NICE OPAL.)**
- 2000 22. **N ROSE SHOW PLATE - ICE GREEN (VERY RARE AND DESIRABLE WITH GREAT IRID.)**
- ___ 23. **N ROSE SHOW PLATE - ELEC. BLUE (PERFECT WITH NICE COLOR AND ELEC. BLUE HIGHLIGHTS)**
- ___ 24. **N ROSE SHOW PLATE - BLUE (RARE AND DESIRABLE ITEM; EPOXY ON ONE ROSE)**
- ___ 25. **N POPPY SHOW RUFFLED BOWL - ICE BLUE (RARE; NICE AVERAGE COLOR; HAS 2" MANUF. HAIRLINE)**
- ___ 26. N Poppy Ruffled Relish Tray - Blue (scarce; nice red & blue highlights)
- ___ 27. N Good Luck Bowl with Pie Crust Edge & Basketweave Exterior - Pur. (scarce item with multi colored satiny finish)
- ___ 28. N Cherry & Cable Master Berry Bowl - Mari. (rare and under priced item; has nice goofus gold trim)
- ___ 29. N Star of David & Bows domed Ruffled Bowl - Pur. (really nice satiny finish)
- ___ 30. **N PEACOCKS BOWL WITH PIE CRUST EDGE & RIBBED EXTERIOR - GREEN (RARE AND DESIRABLE - REALLY NICE RED & GOLD HIGHLIGHTS)**
- ___ 30A. **N PEACOCKS BOWL WITH PIE CRUST EDGE & PLAIN EXTERIOR - WHITE (RARE WITH NICE IRID.; REALLY TOUGH ITEM TO FIND)**
- ___ 31. **N PEACOCKS STIPPLED BOWL WITH PIE CRUST EDGE & RIBBED EXTERIOR WITH NARROW BASE - BLUE (VERY SCARCE ITEM WITH ELEC. BLUE HIGHLIGHTS ON EDGE)**

32. **N PEACOCKS BOWL WITH PIE CRUST EDGE & RIBBED EXTERIOR - AMY. (SCARCE & DESIRABLE ITEM WITH GOLD HIGHLIGHTS)**
33. **N PEACOCKS RUFFLED BOWL WITH RIBBED EXTERIOR - PUR. (SCARCE WITH EXCELLENT BLUE/GREEN HIGHLIGHTS)**
34. **N WISHBONE FTD. RUFFLED BOWL WITH RUFFLES & RINGS EXTERIOR - PUR. (HAS TO BE ONE OF THE NICEST EXAMPLES I'VE SEEN)**
35. **N HEART & FLOWERS RUFFLED BOWL WITH PLAIN EXTERIOR - DK. ICE BLUE (SUPER COLOR & IRID. - A VERY ATTRACTIVE ITEM)**
36. 7 1/2" N Wild Strawberry Handgrip Plate with Basketweave Exterior - Pur. (very scarce with red & gold highlights)
37. 5" N Wild Strawberry 6 Ruffled ind. Berry Bowl with Plain Exterior - Pur. (scarce; really nice highlights)
38. N Strawberry Bowl with Pie Crust Edge & Basketweave Exterior - Green (nice satiny finish)
39. N Three Fruits Ruffled Bowl with Plain Exterior - Mari.
40. 7 1/2" N Fruits & Flowers 2 sided Banana Dish with Basketweave Exterior - Amy. (scarce item with nice satiny irid.)
41. 7 1/2" N Fruits & Flowers 2 sided Banana Dish with Basketweave Exterior - Amy. (scarce; has goldish irid.)
42. N Three Fruits Medallion ftd. Ruffled Bowl with Meander Exterior - Pur. (really nice irid.)
43. N Rosette ftd. Ruffled Bowl - Amy. (fair irid.)
44. N Leaf & Beads ftd. Rose Bowl - Amy. (very nice example)
45. **N BEADED CABLE FTD. ROSE BOWL - AQUA OPAL. (SUPER PASTEL OPAL. & IRID. - THIS ITEM COULD MAKE A COLLECTOR OUT OF ME AGAIN!)**
46. N Round Bushel Basket - Blue (very attractive with elec. blue highlights)
47. N Double Loop Chalice (or Open Sugar) - Blue (nice item with elec. blue highlights)
48. N Singing Bird Stippled Handled Mug - Dk. Mari. (rare item with really nice pink & blue highlights)
49. N Singing Bird Handled Mug - Dk. Mari. (really nice irid. & color)
50. **12 3/4" TALL X 7 1/2" WIDE X 5 1/4" BASE N TREE TRUNK SQUATTY ELEPHANTS FOOT FUNERAL VASE - PUR. (A VERY RARE AND EXTREMELY DESIRABLE ITEM; HAS SOME OF THE BEST COLOR AND IRID. I'VE SEEN ON ONE OF THESE)**
51. **12 1/2" - 12 3/4" TALL X 8" WIDE X 5 1/4" BASE N TREE TRUNK ELEPHANTS FOOT SQUATTY FUNERAL VASE - PUR. (VERY RARE WITH SUPER SATINY MULTI-COLORED IRID.; VERY DESIRABLE)**
52. **17 1/4" TALL X 9" WIDE X 5 1/4" BASE N TREE TRUNK SWUNG FUNERAL VASE - PUR. (SMOOTHED ON EDGE, JUST A BIT; NICE COLOR AND IRID.; VERY RARE)**
53. **20 1/2" TALL X 7" WIDE X 5 1/4" BASE N TREE TRUNK SWUNG FUNERAL VASE - AMY. (ANOTHER RARE ITEM WITH NICE COLOR AND IRID.; HAS NICE HEIGHT)**
54. N Thin Rib "Jesters Cap" Jack in the Pulpit Vase - Amy. (very scarce item)
55. **14" N TREE TRUNK MID SIZE SWUNG VASE - RENNINGER (VERY RARE SHADE OF BLUE - A REAL BEAUT)**
56. 12 1/2" N Tree Trunk Mid size Swung Vase - Green (nice color and irid.; scarce)
57. 13" N Tree Trunk Mid size Swung Vase with Plunger Base - Mari. (very scarce variation with nice color)
58. 11 1/2" Tall x 4 3/4" Base N Wide Panel Squatty Funeral Vase - Mari. (large chip on base)
59. 20 1/4" Tall x 4 3/4" Base N Wide Panel Swung Funeral Vase - Green (underpriced and nice)
60. N Acorn Burr Tumbler - Pur. (absolutely outstanding color and irid.)
61. N Acorn Burr Tumbler - Green (very scarce; nice)
62. N Wishbone Tumbler - Green (very scarce; gold highlights)
63. **N DANDELION TUMBLER - SMOKEY LAVENDER / SLAG EFFECT (RARE VARIATION; UNUSUAL BASE GLASS)**
64. N Dandelion Tumbler - Mari. (nice color)
65. **N CONCAVE DIAMOND TUMBLER - VASELINE (VERY RARE COLOR FOR THIS ITEM - GREAT ITEM WITH NICE IRID.)**
66. N Concave Diamond Tumbler - Celeste Blue
67. **N BARBELLA TUMBLER - VASELINE (EXTREMELY RARE ITEM - GREAT COLOR & NICE)**
68. N Interior Swirl Tumbler - Green (very rare color for this item)
69. N Interior Swirl Tumbler - Mari.
70. **N CHERRY & CABLE TUMBLER - MARI. (VERY RARE ITEM; IRID. ON INSIDE - BIT OF WEAR AT BASE)**
71. N Singing Bird Flared Tumbler - Olive Green (scarce color; scarce with flare)
72. N Singing Bird Tumbler - Green (nice color)
73. N Singing Bird Tumbler - Pur. (nice color)
74. N Greek Key Tumbler - Pur. (scarce; nice color)
75. **N PEACOCK AT THE FOUNTAIN TUMBLER - SMOKEY LAVENDER / SLAG EFFECT (RARE VARIATION OF BASE GLASS - HAS NICE IRID.)**
76. N Springtime Tumbler - Pur. (very scarce; nice color & irid.)
77. N Springtime Tumbler - Dk. Mari. (great color - scarce)
78. N Peach Tumbler - White (scarce, frosty, gold decor worn)
79. N Grape & Gothic Arches Tumbler - Dk. Mari. (really nice color)
80. **N GRAPE & GOTHIC ARCHES TUMBLER - POWDER BLUE / MARI. (ODD TINT TO THIS ITEM - VERY DIFFERENT)**
81. N Grape & Gothic Arches Tumbler - Pearlized Custard (scarce with really nice irid.)
82. 10 1/2" N Diamond Point Swung Vase - Green
83. 6 1/2" N Diamond Point Squatty Swung Vase - Green
84. 7 1/4" N Diamond Point Squatty Swung Vase - Pur.
85. **N ORIENTAL POPPY TANKARD WATER PITCHER - ICE BLUE (EXTREMELY RARE AND VERY DESIRABLE ITEM IN THIS COLOR; NOT TOO MANY OFFERED FOR SALE)**
86. **(2) N ORIENTAL POPPY TUMBLERS - ICE BLUE (RARE WITH NICE COLOR AND IRID.; SELLING CHOICE)**
87. N Oriental Poppy Tumbler - Amy. (nice color)
88. N Oriental Poppy Tumbler - Dk. Mari. (wonderful item!)
89. N Peacock at the Fountain Tumbler - Pur. (nice color)
90. **N RASPBERRY WATER PITCHER - ICE BLUE (RARE AND EXTREMELY DESIRABLE; NICE DARK COLOR AND IRID.)**
91. N Raspberry Water Pitcher - Pur. (scarce; silvery)
92. N Raspberry Tumbler - Pur. (very nice example)
93. N Raspberry ftd. Gravy Boat - Pur. (How bout that - looks to have perfect feet)
94. N Holiday Lg. Round Tray - Dk. Mari. (great color; very scarce item)

5250

95. **N ACORN BURR 8 PC. PUNCH SET - ICE GREEN (RARE AND EXTREMELY DESIRABLE SET; ONE FLANGE HAS BEEN REGLUED; STILL - A HECK OF A SET)**
96. **N FINE CUT & ROSES FTD. ROSE BOWL WITH FANCY INTERIOR - PUR. (OUTSTANDING EXAMPLE GREAT COLOR & IRID.)**
97. N Fine Cut & Roses ftd. Rose Bowl - Amy. (chips on feet)
98. N Fine Cut & Roses ftd. Ruffled Candy Dish with Fancy Interior - Ice Blue (nice color, average irid.; some foot chips)
99. N Fine Cut & Roses ftd. Ruffled Candy Dish with Fancy Interior - White (scarce; damaged feet)
100. **N GOOD LUCK RUFFLED BOWL WITH RIBBED EXTERIOR - AQUA OPAL. (EXTREMELY RARE AND VERY DESIRABLE; HAS A WHOLE LOTTA PASTEL IRID.)**
101. **N THREE FRUITS MEDALLION FTD. RUFFLED BOWL WITH PLAIN EDGE & MEANDER EXTERIOR - AQUA OPAL. (RARE WITH SUPER OPAL.; VERY DESIRABLE)**
102. **N THREE FRUITS BOWL WITH PIE CRUST EDGE & PLAIN EXTERIOR - HOREHOUND (VERY RARE COLOR WITH SUPER IRID.)**
103. **N THREE FRUITS RUFFLED BOWL WITH PLAIN EXTERIOR - SMOKEY (SUPER SCARCE COLOR; NOT TOO MANY SOLD)**
104. N Three Fruits Stippled Plate with Ribbed Exterior - Horehound (small chips on edge, but still an extremely rare item)
105. **N WIDE PANEL (OR FLUTE) STRETCH 6 PC. MASTER SALT SET - VASELINE (VERY UNUSUAL TO FIND A COMPLETE SET; GREAT COLOR)**
106. N Wide Panel (or Flute) Stretch 7 pc. Master Salt Set - Mari. (very scarce set - nice color)
107. N Four Pillar Stretch Vase - Olive Green
108. N Stretch 3 pc. Console Set - Olive Green (scarce set)
109. Pair N Stretch Panelled Candlesticks - Celeste Blue
110. **N G&C WHISKEY DECANTER & STOPPER - MARI. (RARE ITEM; GETTIN' TOUGHER TO FIND)**
111. **N G&C SHOT GLASS - DK. MARI. (GREAT COLOR AND IRID.; VERY SCARCE)**
112. N G&C Water Pitcher - Pur. (scarce item with nice irid.)
113. (3) N G&C Tumblers - Pur. (nice color; selling choice)
114. N G&C Tumbler - Green (scarce color)
115. N G&C Small size ftd. Ruffled Fruit Bowl with Ribbed Exterior - Pur. (outstanding color and irid.; a super item)
116. N G&C Variant Stippled Ruffled Bowl with Ribbed Exterior - Pur. (very scarce item; nice color and irid.)
117. N G&C Handled Nappy from Punch Cup - Pur. (scarce item)
118. N G&C ind. Round Berry Bowl - Amy.
119. N G&C Stippled 2 Handled Bon Bon with Basketweave Exterior - Pur. (very scarce item; nice color)
120. 6 1/4" N G&C 2 sided Banana Dish with Basketweave Exterior - Amy. (scarce item)
121. N G&C (Variation) Table Size Punch Base Only - Mari.
122. 10 1/4" N Thin Rib Swung Vase - Pur.
123. 11 1/2" N Wide Panel Mid Size Swung Vase - Mari./Clear
124. N Plain Interior Stemmed Ruffled Compote with Basketweave Exterior - Pur.
125. **N DREIBUS PARFAIT SWEETS 2 SIDED BANANA DISH WITH BASKETWEAVE EXTERIOR - AMY. (OUTSTANDING EXAMPLE WITH EXCELLENT IRID. - RARE)**
126. **N DAVIDSON'S SOCIETY CHOCOLATES HANDGRIP PLATE WITH BASKETWEAVE EXTERIOR - AMY. (RARE & VERY DESIRABLE - REALLY NICE DETAIL & IRID.)**
127. **N EAGLE FURNITURE CO., 282 - 284 SOUTH MAIN ST. 2 SIDED BANANA DISH WITH BASKETWEAVE EXTERIOR - AMY. (RARE AND DESIRABLE; DESIRABLE WITH GOLD HIGHLIGHTS)**
128. **N BALLARD - MERCED, CA. 6 RUFFLED BOWL WITH BASKETWEAVE EXTERIOR - AMY. (RARE AND DESIRABLE - GETTING TOUGH TO FIND)**
129. N E.A. Hudson Furniture Co. - 711 Travis St. Handgrip Plate with Basketweave Exterior - Amy. (rare & desirable - has small chip off back of one point)
130. N Fern Brand Chocolates 2 sided Banana Dish with Basketweave Exterior - Amy. (rare - has lg. chip off inside edge)
131. 7" Fenton Stippled Rays 6 Ruffled Sauce - Blue
132. Fenton Sailboat Stemmed Wine Glass - Mari.
133. Fenton Wreath of Roses Punch Cup with Persian Medallion Interior - Amy. (super example)
134. Fenton Wreath of Roses Punch Cup with Vintage Grape Interior - Amy. (super example)
- 1300 135. **FENTON GEVURTZ BROS. FURNITURE & CLOTHING HAND GRIP PLATE WITH GARDEN MUMS MOLD - AMY. (SUPER RARE - GREAT IRID. - A REALLY GOOD MOLD STRIKE)**
- 1000 136. **FENTON GEVURTZ BROS./GARDEN MUMS 6 RUFFLED BOWL - AMY. (VERY RARE; REALLY NICE IRID. & QUALITY)**
137. **COMPLIMENTS OF THE CENTRAL SHOE STORE/ GARDEN MUMS HANDGRIP PLATE - AMY. (VERY RARE & DESIRABLE; VERY NICE STRIKE)**
138. **BRAZIER'S CANDIES/GARDEN MUMS 6 RUFFLED BOWL - AMY. (ANOTHER RARITY WITH NICE COLOR & IRID.)**
- 900 139. **NORRIS N. SMITH/GARDEN MUMS 6 RUFFLED BOWL - AMY. (RARE AND VERY DESIRABLE - REALLY NICE STRIKE)**
140. **UTAH LIQUOR CO. ; GARDEN MUMS 2 SIDED BANANA DISH - AMY. (RARE AND VERY DESIRABLE - DARN GOOD STRIKE)**
141. **FENTON GARDEN MUMS HAND GRIP PLATE WITH STENCILED "COMPLIMENTS OF J. CORBITT - PLEASANTVILLE, O. - AMY. (RARE AND UNUSUAL - A BIT DIFFERENT)**
142. 6" Fenton Garden Mums Flat Plate - Amy. (very scarce & desirable - has goldish highlights)
- 950 143. **6" SEASONS GREETINGS - "EAT PARADISE SODAS" PLATE - AMY. (LET ME TELL YOU - THIS IS THE BEST I'VE SEEN..PERIOD!)**
144. **9 - 9 1/2" "COMPLIMENTS OF SPECTORS DEPARTMENT STORE" PLATE - DK. MARI. (VERY DESIRABLE ITEM; EXCELLENT COLOR & IRID.)**
145. Fenton Horsehead Medallion ftd. Ruffled Bowl - Green (very scarce with nice average color & irid.)
146. **FENTON HORSEHEAD MEDALLION JACK IN THE PULPIT FTD. BOWL - MARI./VASELINE (RARE AND VERY DESIRABLE COLOR; NICE IRID.)**
147. 9" Fenton Dragon & Lotus 8 Ruffled Bowl - Mari./Vaseline (very rare base color with nice irid.)
148. 8 1/2" Fenton Dragon & Lotus Ice Cream Shaped Bowl - Mari.
149. 9" Fenton Dragon & Lotus 8 Ruffled Bowl - Blue
150. **9 1/2" FENTON DRAGON & STRAWBERRY FTD. RUFFLED BOWL - MARI. (VERY SCARCE; NICE DETAIL AND IRID.)**
151. 9" Fenton Peacock & Grape 8 Ruffled Bowl - Lime Green/ Mari. (scarce base color; nice irid.)
152. (2) 7 1/4" Fenton Leaf Chain Ruffled Bowl - Mari. / Vaseline (nice color, attractive - selling choice)

1050

- 153. Fenton Lotus & Poinsettia ftd. Ruffled Sauce - Mari./Vaseline (really nice color & irid.)
- 154. Fenton Blackberry Spray 4 sided Hat - Dk. Mari./Vaseline
- 950 155. **9" FENTON PEACOCK AT THE URN FLAT PLATE - BLUE (VERY SCARCE ITEM WITH AN ATTRACTIVE RADIUM FINISH TO THE IRID.)**
- 156. 8 1/2" Fenton Peacock at the Urn 6 Ruffled Bowl - Lt. Clambroth
- 157. Fenton Peacock at the Urn Stemmed Ruffled Compote - Mari./Vaseline (scarce; nice base color)
- 158. Fenton 2 Row Open Edge Jack in the Pulpit Hat - Mari./Vaseline (scarce)
- 159. Fenton 2 Row Open Edge Ruffled Hat - Mari./Vaseline (scarce)
- 160. **6 3/4" FENTON PEACOCK TAIL 6 RUFFLED SAUCE - MARI./VASELINE (RARE ITEM TO FIND IN THIS COLOR)**
- 161. 7 1/2" Fenton G & C low Ruffled Bowl - Mari./Vaseline (scarce; nice color)
- 162. Fenton Holly Jack in the Pulpit Crimped Edge Hat - Mari./Vaseline
- 163. 5 1/2" Fenton Persian Medallion Ice Cream Shaped Sauce - Lt. Mari./Vaseline (very scarce item to find in this color; really tough)
- 164. Crider Orange Tree Standard Flared Mug - Ice Green (signed Terry Crider)
- 165. Fenton Orange Tree Standard Flared Mug - Mari. / Vaseline (nice color and irid.)

START OF SECOND SESSION

- 166. 5 1/2" Tall Fenton Boggy Bayou Squatty Vase - Mari. / Lime Green (odd tint)
- 167. 6 1/2" Tall Fenton Diamond Point Columns Squatty Vase - Mari. / Lime Green (odd tint)
- 168. 6" Fenton Sailboats 6 Ruffled Sauce - Green (rare color; a bit silvery)
- 169. 6" Fenton Sailboats 6 Ruffled Sauce - Mari.
- 170. **FENTON STIPPLED RAYS STRETCH STEMMED ICE CREAM SHAPED COMPOTE - VASELINE (VERY RARE AND DESIRABLE IN THIS COLOR AND SHAPE)**
- 171. Fenton 2 pc. Stretch Tumble Up - Vaseline (attractive item)
- 172. Fenton 2 pc. Tumble Up with Etched Northern Star - Lt. Mari.
- 173. Fenton 2 pc. Tumble Up - Dk. Mari.
- 174. Fenton Stretch Ash Tray with Match Box Holder - Vaseline
- 425 175. **FENTON KITTENS RUFFLED TOOTHPICK HOLDER - BLUE (A BEAUT; HAS A RADIUM FINISH; NICE)**
- 475 176. **FENTON KITTENS CUP ONLY - BLUE (RARE ITEM; NICE DETAIL; SILVERY/GOLD HIGHLIGHTS)**
- 600 177. **FENTON KITTENS CEREAL BOWL - BLUE (RARE; HAS LIGHT SILVERY INTERIOR IRID.)**
- 500 178. **FENTON KITTENS 6 RUFFLED BOWL - BLUE (RARE; PRETTY NICE DETAIL; SATINY FINISH)**
- 475 179. **FENTON KITTENS 4 SIDED BOWL - BLUE (RARE; REALLY NICE DETAIL & MULTI COLORED SATINY FINISH)**
- 600 180. **FENTON KITTENS 2 SIDED BANANA DISH - POWDER BLUE / MARI. (RARE; HAS LIGHTER BLUE GLASS WITH REALLY NICE OVERLAY)**
- 181. **4 3/4" FENTON KITTENS FLAT PLATE - DK. MARI. (ABSOLUTELY FANTASTIC EXAMPLE - FLAT WITH GREAT DETAIL & COLOR)**

- 182. Fenton Kittens Cup & Saucer - Dk. Mari. (rare and a great example; nice color & detail)
- 183. Fenton Kittens Cereal Bowl - Dk. Mari. (very scarce; super color & detail)
- 184. Fenton Kittens 6 Ruffled Bowl - Dk. Mari. (scarce; nice color & detail)
- 185. Fenton Kittens 4 sided Bowl with 2 sets of Cats - Dk. Mari. (very desirable item with great color)
- 186. Fenton Kittens 4 sided Bowl - Dk. Mari. (scarce; really nice color & irid.)
- 187. Fenton Kittens 2 sided Banana Dish - Mari. (scarce; nice color & irid.)
- 188. Fenton Kittens Cup - Lt. Mari. (scarce; nice detail)
- 189. Fenton Kittens Saucer with 2 sets of Cats - Lt. Mari. (very scarce; pretty nice detail)
- 190. Fenton Kittens odd Shaped Ruffled Toothpick Holder - Mari. (scarce & desirable - one of those odd shaped ones)
- 191. Fenton Kittens Ruffled Toothpick Holder - Dk. Mari. (absolutely super in color, detail & quality)
- 192. Fenton Kittens 4 sided Square Toothpick Holder - Mari. (sorta nice shape)
- 193. 6 1/2" Fenton Persian Medallion Flat Plate - Blue (excellent example with nice multi colored highlights)
- 950 194. Fenton Butterflies 2 Handled 2 sided Card Tray - Amy.
- 1250 195. **20 1/2" TALL X 8 3/4" WIDE X 5 1/4" BASE FENTON DIAMOND RIB SWUNG FUNERAL VASE - GREEN (RARE AND VERY DESIRABLE - NICE COLOR - HAS MANUF. CHECK IN COLLAR BASE)**
- 196. **19 - 19 1/4" TALL X 8 1/2" WIDE X 5 1/4" FENTON DIAMOND RIB SWUNG FUNERAL VASE - AMY. (RARE AND HAS SUPER COLOR & IRID.; HAS MANUF. CHECKS IN COLLAR BASE)**
- 197. 5 1/2" Fenton Diamond Rib Squatty Swung Vase - Amy. (the baby of the bunch)
- 198. **9 3/4" - 10" FENTON BUTTERFLY & BERRY SWUNG VASE - PUR. (VERY RARE COLOR FOR THIS ITEM)**
- 199. 13" Fenton Plume Panels odd Swung Vase - Amy. (wants to be a vase version of Jack in the Pulpit)
- 200. **18 1/4" FENTON RUSTIC SWUNG FUNERAL VASE - WHITE (RARE; WITH GREAT IRID, AND IS REALLY FROSTY)**
- 201. **21 3/4" FENTON RUSTIC SWUNG FUNERAL VASE - GREEN (A REALLY TALL ONE WITH NICE IRID. THAT GETS A BIT GOLDISH)**
- 202. **20" FENTON RUSTIC SWUNG FUNERAL VASE - BLUE (RARE AND DESIRABLE - SUPER IRID. THAT'S SILVERY AT BASE)**
- 203. **20 3/4" FENTON RUSTIC SWUNG FUNERAL VASE - MARI. (SCARCE & DESIRABLE - NICE COLOR AND IRID.)**
- 204. 16 1/4" Fenton Rustic Mid size Swung Vase - Blue (scarce; nice color & irid.)
- 205. 13" Fenton Rustic mid size Squatty Swung Vase - Amy. (scarce; nice)
- 206. 7 1/2" Fenton Three Diamonds & Bows Swung Vase - Green (very rare color for this item - nice satiny finish)
- 207. 9" Fenton Chrysanthemum 8 Ruffled Bowl - Amy. (very scarce color with excellent irid.)
- 208. 9" Fenton Leaf Chain 8 Ruffled Bowl - Blue (satiny finish)
- 209. Fenton Stretch Ashtray with Match Box Holder - Celeste Blue (nice color)
- 210. **9" FENTON 3 ROW OPEN EDGE RUFFLED BOWL - ICE BLUE (VERY SCARCE & DESIRABLE; NICE PASTEL ITEM)**
- 211. **FENTON CHERRY CIRCLES LG. 2 HANDLED 2 SIDED BON BON - AQUA (VERY RARE COLOR FOR THIS ITEM - NICE BASE COLOR)**

- ___ 212. **6 1/2" FENTON LIONS ROUND FLARED BOWL - POWDER BLUE/MARI. (VERY SCARCE COLOR FOR THIS ITEM - NICE)**
- ___ 213. Fenton Orange Tree Covered Powder Jar - Blue (scarce & perfect)
- ___ 214. 11" Fenton Stag & Holly Lg. ball ftd. Ruffled Bowl - Dk. Mari. (super irid.- nice)
- ___ 215. **FENTON STRAWBERRY SCROLL TUMBLER - DK. MARI. (SUPER COLOR & IRID. - GREAT EXAMPLE)**
- ___ 216. **FENTON APPLE TREE TUMBLER - WHITE (VERY SCARCE; NICE FROSTY IRID.)**
- ___ 217. Fenton Orange Tree Orchard Tumbler - White (very scarce; really frosty with light irid. - small chip on base)
- ___ 218. **FENTON FLORAL & GRAPE TUMBLER - GREEN (ONE OF THE BEST EXAMPLES)**
- ___ 219. **FENTON BUTTERFLY & BERRY TUMBLER - GREEN (VERY SCARCE COLOR; PRETTY NICE IRID.)**
- 2350 ___ 220. **9 1/2" FENTON LITTLE FLOWERS LG. ICE CREAM SHAPED BOWL - RED (EXTREMELY RARE ITEM IN A RARE SHAPE; SUPER COLOR AND NICE IRID.)**
- 2350 ___ 221. **9" FENTON HOLLY 8 RUFFLED BOWL - RED (EXTREMELY RARE ITEM WITH NICE IRID. AND HAS TO BE ONE OF THE BETTER EXAMPLES WE'VE EVER SOLD)**
- 4000 ___ 222. **9" FENTON ORANGE TREE RUFFLED BOWL - RED (ANOTHER VERY RARE ITEM WITH GREAT COLOR AND IRID.; GETTING REAL TOUGH TO FIND)**
- 1400 ___ 223. **9" FENTON PEACOCK AND GRAPE RUFFLED BOWL - RED WITH SLAG (SUPER, SUPER ITEM WITH GREAT IRID. AND NICE SLAG EFFECT)**
- 3250 ___ 224. **7 1/2" FENTON PEACOCK TAIL ICE CREAM SHAPED BOWL - RED (EXTREMELY RARE ITEM - NOT MANY SOLD; GREAT COLOR)**
- 2300 ___ 225. **M' BURG HANGING CHERRIES WATER PITCHER - GREEN (A SUPER EXAMPLE WITH EXCELLENT RADIUM IRID.)**
- ___ 226. **(2) M' BURG HANGING CHERRIES TUMBLERS - GREEN (SCARCE WITH NICE IRID.; SELLING CHOICE)**
- 600 ___ 227. **M' BURG SEACOAST PIN TRAY - CLAMBROTH (PERFECT BUT IS A VERY LIGHT MARIGOLD VARIATION)**
- ___ 228. M'burg Seacoast Pin Tray - Green (very desirable, has small chip on exterior)
- ___ 229. M'burg Sunflower Pin Tray - Green (rare but has large chip on exterior)
- ___ 230. M'burg Swirl Hobnail Oversized Rose Bowl - Pur. (super gold irid.; bruised inside)
- ___ 231. M'burg Swirl Hobnail Spittoon - Pur. (badly cracked)
- ___ 232. 10 1/2" M'burg Swirl Hobnail Swung Vase - Pur. (scarce, has small long flake on base)
- ___ 233. 5 1/2" M'burg Blackberry Wreath Ind. Ice Cream Bowl - Amy. (super, super radium finish)
- ___ 234. M'burg Holly Sprig Deep Oblong 2 Handled Bon Bon - Amy. (nice satiny finish)
- ___ 235. **7 1/2" M'BURG LETTERED COURTHOUSE 6 RUFFLED BOWL - AMY. (RARE AND ALWAYS DESIRABLE - GOLD/SILVERY RADIUM FINISH)**
- ___ 236. **6" M'BURG ISAAC BENESCH & SONS 6 RUFFLED BOWL - AMY. (EXCELLENT EXAMPLE - NICE DETAIL & IRID.)**
- ___ 237. 7 3/4" M'burg Mayan Ice Cream Shaped Bowl - Green (radium)
- ___ 238. 8" M'burg Grape Wreath Ruffled Bowl with 3 in 1 Edge - Amy. (radium, super)
- ___ 239. 9 1/2" M'burg Nesting Swan 6 Ruffled Bowl - Amy. (very scarce; has nice satiny finish)

- ___ 240. **10" M'BURG SEAWEEED RUFFLED BOWL WITH 3 IN 1 EDGE - AMY. (RARE AND DESIRABLE; SUPER SATINY FINISH - VERY ATTRACTIVE)**
- ___ 241. **9" M' BURG ZIG ZAG ICE CREAM SHAPED BOWL - MARI. (RARE WITH GREAT RADIUM FINISH & PINK HIGHLIGHTS)**
- ___ 242. M'burg Marilyn Tumbler - Mari. (rare color; sorta radium)
- ___ 243. M'burg Feather & Heart Tumbler - Mari (super radium finish)
- ___ 244. 6 3/4" Cambridge Inverted Strawberry Ice Cream Shaped Bowl - Green
- 650 ___ 245. **CAMBRIDGE BUZZ SAW SMALL SIZED CRUET & STOPPER - GREEN (VERY RARE & VERY DESIRABLE; SUPER COLOR & IRID.)**
- ___ 246. **CAMBRIDGE INVERTED THISTLE TUMBLER - AMY. (RARE AND DESIRABLE WITH REALLY NICE DETAIL & REALLY NICE IRID.)**
- ___ 247. **CAMBRIDGE INVERTED STRAWBERRY TUMBLER - MARI. (SCARCE ITEM; NICE COLOR WITH AVERAGE IRID.)**
- ___ 248. (2) Cambridge Double Star Tumblers - Green (really nice color & irid.; selling choice)
- ___ 249. Dugan Beaded Shell Handled Mug - Pur. (nice color & irid.)
- ___ 250. **DUGAN BROOKLYN BRIDGE 10 RUFFLED BOWL - MARI. (VERY SCARCE WITH NICE DARK COLOR & IRID.)**
- ___ 251. **DUGAN GOD & HOME TUMBLER - BLUE (RARE WITH NICE SATINY IRID.)**
- ___ 252. Dugan Beaded Shell Tumbler - Pur. (nice color & irid.)
- ___ 253. Dugan Dahlia Tumbler - Pur. (very scarce, really nice color)
- ___ 254. Dugan Rambler Rose Tumbler - Amy. (super color & irid. for this item)
- ___ 255. Dugan Heavy Iris Tumbler - Pur. (excellent color & great irid.)
- ___ 256. Dugan Peacock at the Fountain Tumbler - Blue (great irid.)
- ___ 257. Dugan Cherry Wreath Tumbler - Pur. (excellent example)
- ___ 258. Dugan Cherry Wreath Tumbler - Dk. Mari. (nice color & irid.)
- ___ 259. Dugan Jewelled Heart Tumbler - Dk. Mari. (super irid.)
- ___ 260. **DUGAN HARVEST FLOWERS TUMBLER - LIME GREEN/MARI. (VERY ODD TINT FOR THIS ITEM)**
- ___ 261. Dugan Heavy Iris Tumbler - Mari. (light satiny finish)
- ___ 262. Dugan Dahlia Tumbler - White (has blue decor. on flower which is a bit light)
- ___ 263. (2) Dugan S Repeat Punch Cups - Pur. (super irid.; selling so much per each)
- ___ 264. 7 3/4" Dugan Garden Path Variant / Soda Gold Exterior Deep Round Bowl - Lime Green / Mari. (very odd tint for this pattern)
- ___ 265. **10 1/2" DUGAN BIG BASKETWEAVE SWUNG VASE - PUR. (SUPER MULTI COLORED IRID. - CHOICE)**
- ___ 266. **10 1/4" DUGAN BIG BASKETWEAVE SWUNG VASE - BLUE (RARE COLOR FOR THIS PATTERN - NICE IRID.)**
- ___ 267. 11" Dugan Big Basketweave Swung Vase - Mari. (nice color)
- ___ 268. 9 1/2" Dugan Lined Lattice Swung Vase - Pur. (very attractive with great irid.)
- ___ 269. 12 1/2" Dugan Pulled Loop Swung Vase - Dk. P. Opal. (super color; shows case effect)
- ___ 270. **21" DUGAN THIN RIB LG. SWUNG FUNERAL VASE - MARI. / CLEAR (VERY RARE ITEM - DON'T REMEMBER SEEING ANOTHER)**
- ___ 271. 9 1/2" Dugan Target Swung Vase - Pur. (nice blue & red highlights)
- ___ 272. 12" Dugan Spiralx Swung Vase - White (nice frosty irid.)

273. 9 1/4" Dugan Vining Twigs Swung Vase - White (nice frosty irid.)
274. Dugan Stippled Petals domed Ruffled Bowl - Pur. (rare color with really nice irid.)
275. **DUGAN QUESTION MARK / GEORGIA PEACH & PUZZLE STEMMED PLATE - WHITE (RARE WITH NICE IRID. - FROSTY)**
276. **DUGAN NAUTILUS NOVELTY CREAMER - PUR. (GREAT COLOR, SCARCE & HAS A LARGE FLARE)**
277. **DUGAN NAUTILUS NOVELTY CREAMER - P. OPAL. (VERY SCARCE - HAS OPAL. AROUND EDGE)**
278. Australian Nesting Swan Ruffled Sauce (Rd. 4679) - Pur. (rare with super irid.)
279. Australian Magpie Ruffled Sauce - Pur. (scarce; super color)
280. **AUSTRALIAN BANDED DIAMONDS TUMBLER - MARI. (RARE ITEM IN THIS COLOR; ONE OF THE FIRST WE'VE SOLD)**
281. 9 3/4" European Pinwheel Lg. Flared Vase - Mari. (selling this one by the pound - nice color)
282. European Daisy Block Row Boat - Mari (scarce item with nice color)
283. Mary Gregory Tall Enameled Tumbler with Little Girl - Lt. Mari (very scarce with excellent decoration)
284. U.S. Glass Souvenir Toothpick (Pattern?) - Gold Flash
285. **U.S. GLASS PEACOCK LAMP - PUR. (RARE ITEM WITH NICE AVERAGE COLOR & IRID.)**
286. Czech Mountain Lake Scene Small size Table Lamp - Mari. (scarce & desirable)
287. Pair U.S. Glass bell Shaped Candlesticks - Yellow Opaque (nice color & irid.; very desirable)
288. 6" Tall U.S. Glass Plain Tumbler or Vase - Yellow Opaque
289. (Maker?) Flute Tumbler - Grey Flash (very scarce item - nice irid.)
290. **U.S. GLASS WHITE OAK TUMBLER - MARI. (RARE ITEM - WHERE IS THE PITCHER?)**
291. **U.S. GLASS COSMOS & CONE TUMBLER WITH J.R. MILLNER CO. ADV. - MARI. (SUPER EXAMPLE OF A VERY UNDER PRICED ITEM)**
292. U.S. Glass Palm Beach Tumbler - White (very scarce; nice example - frosty)
293. Jenkins Field Thistle Tumbler - Mari. (actually an excellent example for this piece)
294. Jenkins Mayflower Tumbler - Mari. (nice color)
295. **DEPRESSION ERA STIPPLED STRAWBERRY TUMBLER - LT. MARI. (VERY RARE ITEM; LIGHT IN COLOR)**
296. **IMPERIAL GRAPE WINE DECANTER & STOPPER - PUR. (SCARCE; EXCELLENT COLOR & IRID.)**
297. Imperial Grape Stemmed Wine Glass - Pur. (scarce, nice color & irid.)
298. 5 1/4" Imperial Morning Glory Small Swung Vase - Pur. (super color & irid.)
299. 6 3/4" Imperial Ripple small size Swung Vase - Pur. (super color & irid.)
300. **IMPERIAL HOMESTEAD NU ART (SIGNED) CHOP PLATE - BLUE (EXTREMELY RARE AND VERY DESIRABLE; PROBABLY ONE OF THE BEST EXAMPLES WE WILL SELL; A SUPER ITEM)**
301. Imperial Little Barrel Miniature Lamp - Mari. (someone made it from the bottle)
302. **PAIR IMPERIAL SODA GOLD SALT AND PEPPER SHAKERS - AQUA / MARI. (RARE PAIR; NICE COLOR AND IRID.)**
303. **IMPERIAL CORN BOTTLE - SMOKE (VERY SCARCE WITH FANTASTIC IRID.)**

304. **IMPERIAL CORN BOTTLE - GREEN (VERY SCARCE; ACTUALLY A REALLY NICE EXAMPLE)**
305. **3 1/2" TALL X 5" ACROSS IMPERIAL LUSTRE ROSE WHIMSEY FLARED TUMBLER - POWDER BLUE / MARI. (RARE WHIMSEY IN A RARE COLOR - REALLY NEAT!)**
306. Imperial Lustre Rose Tumbler - Pur. (super color and irid.)
307. **IMPERIAL TIGER LILY TUMBLER - VIOLET BLUE (VERY RARE COLOR WITH SUPER IRID.)**
308. Imperial Tiger Lily Tumbler - Pur. (very scarce; super color and irid.)
309. Imperial Grape Tumbler - Pur. (super color and irid.)
310. **IMPERIAL GRAPE TUMBLER - SMOKE (RARE WITH SUPER BRIGHT IRID.)**
311. **IMPERIAL FASHION TUMBLER - SMOKE (RARE WITH SUPER BRIGHT IRID.)**
312. Imperial Diamond Lace Tumbler - Pur. (nice color with gold highlights)
313. Imperial Windmill Tumbler - Pur. (very scarce with super irid.)
314. **IMPERIAL 474 TUMBLER - AQUA (VERY RARE TINT FOR THIS PATTERN - NICE)**
315. **IMPERIAL WAFFLE BLOCK TUMBLER - MARI. (VERY RARE PATTERN IN TUMBLERS - NICE IRID.)**
316. **IMPERIAL WAFFLE BLOCK TUMBLER - CLAMBROTH (RARE WITH SUPER IRID.)**
317. 4 1/4" Imperial Tulip and Cane Stemmed Wine Glass - Mari. (rare item with excellent color and irid.)
318. **IMPERIAL COLONIAL 2 HANDLED TOOTHPICK HOLDER - MARI. (RARE AND DESIRABLE; SIGNED WITH IRON CROSS)**
319. **4" TALL X 5 3/4" ACROSS IMPERIAL PARLOR PANELS SQUATTY RUFFLED SWUNG VASE - PASTEL MARI. (VERY DESIRABLE WITH FANTASTIC IRID.)**
320. **14 3/4" TALL X 8 1/2" ACROSS X 4 3/4" BASE IMPERIAL MORNING GLORY SWUNG FUNERAL VASE - PUR. (RARE AND VERY DESIRABLE; SUPER SCARCE)**
321. 17" Tall x 8 1/2" Across x 4 3/4" Base Imperial Parlor Panels Swung Funeral Vase - Lime Green (scarce and desirable; not bad color)
322. 8 1/4" Imperial Beaded Bullseye Swung Flared Vase - Lime Green (nice base glass color - silvery)
323. 8 1/4" Tall x 8 1/2" Wide x 4 1/2" Base Imperial Interior Panelled Squatty Funeral Vase with Etched Flowers - Mari. (signed with Iron Cross; a really neat item)
324. Imperial 474 Milk Pitcher - Green (very scarce and desirable; has silvery / gold irid.)
325. Imperial Cockatoo Large Wall Vase - Smoke (extremely rare color for this item - neat!)
326. Imperial Hobstar Flower Stemmed Ruffled Compote - Smokey Lavender (very scarce; super color and irid.)
327. 7 3/4" Imperial Acanthus Deep Round Bowl - Pur. (nice color with gold, red, and blue highlights)
328. SURPRISE!
329. SURPRISE!
330. SURPRISE!

For 1995 Auction Results, send \$2.00 (per auction) & a SASE to:
Valerie Carlsen, 202 Eleanor St., Horseheads, NY 14845

To be placed on the Burns Auction Service Mailing List, send \$2.00 (a one time fee) to:
Keuka Printing, P.O. Box 5, Hammondsport, NY 14840
(Checks payable to Keuka Printing)

