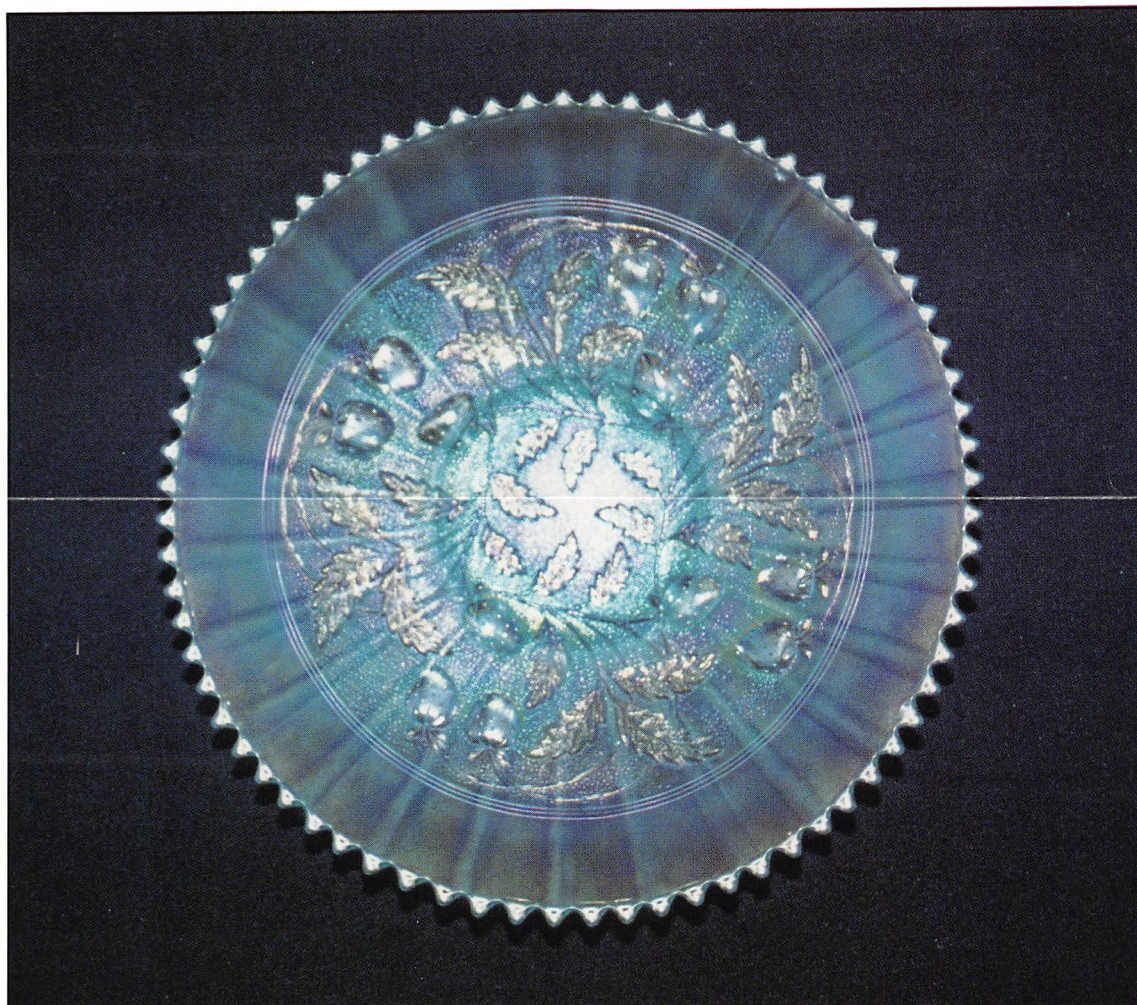


OUTSTANDING CARNIVAL GLASS

AUCTION

SATURDAY, MAY 20, 1995

9:30 AM



Holiday Inn--St. Louis West/St. Peters
4221 South Outer Road
St. Peters, MO

(Cave Springs Exit #225 off of I-70, take South frontage road West)
Call (314) 928-1500 for reservations

JIM SEECK
515-424-1116

Seeck Auctions

VERN WHITE
515-748-2923

CARNIVAL GLASS AUCTION

SATURDAY, MAY 20, 1995 -- 9:30 A.M.

Holiday Inn -- St. Louis West/St. Peters -- St. Peters, MO

Seek Auctions is excited to be selling one of our best Carnival Glass auctions this year. We have a wonderful selection of glass from the Marv & Dorothy Loughmiller collection from Oregon plus the Clint Fox collection from Texas. There are fantastic hatpins, hatpin holders, plates including the only known Stippled Strawberry plate in ice blue, other wonderful ice blue and aqua opal pieces, overall, a great variety for everyone. This will be a fun one to attend!

PREVIEW: Friday, May 19, 2:00 P.M.

RESERVATIONS: Call (314)928-1500 (Please mention you are with the Seek Auction)

WRITE-IN BID POLICY

1. Write-in bids will be accepted by sending the numbers of the item(s) desired and the amount bid on each to: Seek Auctions, 405 1st St., Grafton, IA 50440.
2. If known by Auction Company, bids may be done over the telephone. (515)424-1116.
3. There is a \$5 handling charge for each successful bid. Shipping and insurance charges are additional.
4. Bidders will be notified by a phone call if their bid(s) are successful. This call will be made 1 - 3 days after the auction is over.
5. Please have all bids in by Wednesday, May 17th. All bids (by mail or phone) after this date will not be carried out.
6. If you do not receive an item that sold for less than your bid, assume we cancelled your bid because the piece of glass had below average color, manufacture problem, damage or was not listed correctly.
7. Please, no calls concerning write-in bids until Monday, May 22nd.
8. To receive price lists send: \$20 -- for this auction and next 7 auctions
\$5 -- for only this auction or individual auction (please specify)

Send to the above address.

9. If you are extremely picking, please do not send us write-in bids.

- | | |
|---|---|
| ___ 1. Pinecone ruffled sauce - amethyst | ___ 21. Grape & Cable hatpin holder - lavender - very pretty in a very rare color |
| ___ 2. Star & File rosebowl - marigold | ___ 22. Grape & Cable hatpin holder - green - scarce |
| ___ 3. Floral & Optic rosebowl - clambroth | ___ 23. Grape & Cable hatpin holder - purple - heat check in foot, very pretty |
| ___ 4. Stretch ruffled hatshape - ice green | ___ 24. Grape & Cable hatpin holder - marigold |
| ___ 5. Cathedral Chalice (2) - marigold - choice | 23,000 ___ 25. Stippled Strawberry 9" plate - ice blue - only one known, one of the top rarities in the carnival glass collecting field, FANTASTIC! |
| ___ 6. Rabbit bank - marigold | ___ 26. Rustic 16" vase w/CRE edge - blue |
| ___ 7. Double Star tumbler - green | ___ 27. Tulip & Cane 4 1/2" wine glass - marigold - unlisted size |
| ___ 8. Four-Seventy-Four tumbler - marigold | ___ 28. Tulip & Cane 3 5/8" cordial - marigold - very rare |
| ___ 9. Propeller compote - marigold | ___ 29. Captive Rose ruffled bowl - green |
| 100 ___ 10. Owl hatpin - lavender - super pretty & rare! | 1000 ___ 30. Stippled Three Fruits 9" plate - sapphire - a SUPER pretty plate, very rare & desirable |
| ___ 11. Flying bats hatpins (2) - purple - choice | ___ 31. Stippled Three Fruits 9" plate - blue - SUPER irid., also tough to get |
| ___ 12. Throwpillow hatpin - purple | ___ 32. Stippled Three Fruits 9" plate - amethyst - SPECTACULAR, radium multi color irid. |
| 2200 ___ 13. Bullet hatpin - purple | ___ 33. Stippled Three Fruits 9" plate - lavender |
| ___ 14. Lotus & Grape 9" plate - green - an outstanding plate, very pretty & rare | ___ 34. Stippled Three Fruits 9" plate - light amethyst - very attractive amber type irid. |
| ___ 15. Persian Garden 6" plate - white - super, has Pool of Pearls back | ___ 35. M'burg Hanging Cherries 7" IC shaped bowl - green - satin & pretty |
| ___ 16. Persian Garden 6" plate - marigold | ___ 36. Pinecone 7" plate - marigold - extremely pretty |
| ___ 17. N's Flute 4 pc. table set - marigold - sugar has chip on handle | ___ 37. Pinecone 7" plate - blue |
| ___ 18. Blackberry Open Edge 2 sides up hatshape - red - super! a great piece of red | |
| ___ 19. Blackberry Open Edge 2 sides up hatshape - marigold - lots of extra glass, open edges are filled in | |
| ___ 20. Grape & Cable hatpin holder - ice blue - super fantastic, one of the best I have seen, bottom of one foot has minor buffing, who cares! | |

- _____ 38. Greek Key tumbler - marigold - nice
 _____ 39. Panelled Dandelion tumbler - green
 _____ 40. Peacock at the Fountain 10 pc. punch set - amethyst - an outstanding rare set, in high demand
 _____ 41. Diving Dolphins ftd rosebowl - marigold - scarce
 _____ 42. Round Up IC shaped bowl - marigold
 _____ 43. Little Flowers chop plate - marigold - very, very rare
 _____ 44. Dugan's Cherries large ruffled bowl - peach opal - scarce
 _____ 45. Peacocks ruffled bowl - aqua opal - outstanding pastel example, very pretty
 _____ 46. Peacocks ruffled bowl - blue - very scarce and nice
 _____ 47. Peacocks ruffled bowl - purple - very pretty
 _____ 48. Peacocks ruffled bowl - marigold - nice
 _____ 49. Apple Blossom Twigs low bowl/plate - amethyst
 _____ 50. Grape & Cable candlesticks - green - a nice pair
 _____ 51. Double Scroll candlesticks - marigold
 2600 _____ 52. N's Butterfly bon bon w/threaded back - ice blue - extremely rare item, one of just a few known, nice color & iridescence
 _____ 53. N's Butterfly bon bon w/threaded back - blue - super spectacular, very rare
 _____ 54. Dahlia tumbler - amethyst - pretty
 _____ 55. Bouquet tumbler - marigold
 _____ 56. Hobstar Band tumbler - marigold
 _____ 57. Poppy Show ruffled bowl - marigold - rare
 _____ 58. Poppy Show ruffled bowl - white - in demand
 _____ 59. Stag & Holly spt ftd ruffled bowl - green
 _____ 60. Stippled Good Luck ruffled bowl - sapphire/reninger/neat color blue - outstanding irid. on this unusually colored bowl
 _____ 61. Stippled Good Luck ruffled bowl - marigold - nice!
 _____ 62. N's Peacock at the Fountain 7 pc. berry set - purple - master bowl is spectacular, small ones are just as good!
 _____ 63. Fan gravy boat - peach opal
 _____ 64. Grape & Cable Variant 9" plate w/BW back - green - super
 _____ 65. Grape & Cable 9" plate w/BW back - amethyst - nice plate
 _____ 66. Grape & Cable Variant 9" plate w/BW back - marigold
 _____ 67. Grape & Cable 9" plate w/plain back - amethyst
 1200 _____ 68. Acorn Burrs 8 pc. punch set - purple - bowl is outstanding, has manufacture open bubble filled with epoxy, still a great set
 1200 _____ 69. Acorn Burrs 7 pc. water set - purple - outstanding set
 _____ 70. Beaded Shell tumbler - amethyst
 _____ 71. Soda Gold tumbler - smoke
 _____ 72. Fashion tumbler - marigold
 _____ 73. Inverted Strawberry spittoon - marigold - scarce & nice
 _____ 74. Persian Medallion card tray shaped bon bon - vaseline - heat checks in handles
 _____ 75. Persian Medallion ruffled bon bon - blue
 2000 _____ 76. Grape Arbor 7 pc. water set - ice blue - outstanding example of this rare set, pretty as they get!
 _____ 77. Grape Arbor water pitcher - white - frosty & nice
 _____ 78. Grape Arbor tumbler - white - scarce
 _____ 79. Pinched Swirl 6 1/2" vase - peach opal
 2200 _____ 80. M'burg Peacock at Urn giant compote - green - extremely rare & desirable, an outstanding compote, satin irid.
 _____ 81. Tree Trunk 10" vase - purple
 _____ 82. Dragon & Lotus ruffled bowl - red - cherry & nice, rare & desirable, buffed point
 _____ 83. Fruits & Flowers 10" ruffled bowl - marigold
 _____ 84. Beaded Bullseye 8 1/2" vase - purple - absolutely great!
 _____ 85. Rustic 21" pair of vases - marigold - choice - a great pair for the fireplace, nice
 800 _____ 86. Orange Tree hatpin holder - white - extremely rare, minor nicks on feet
 _____ 87. Orange Tree hatpin holder - green - spectacular irid., feet are chipped
 _____ 88. Orange Tree hatpin holders (2) - blue - choice
 _____ 89. Orange Tree hatpin holder - marigold
 _____ 90. Three Fruits 9" plate w/plain back - purple
 _____ 91. Three Fruits 9" plate w/BW back - marigold
 _____ 92. Basketweave Open Edge ruffled basket - red
 _____ 93. Basketweave Open Edge ruffled basket - aqua
 _____ 94. Basketweave Open Edge ruffled basket - purple base glass w/blue glass on edge, weird
 _____ 95. Basketweave Open Edge ruffled basket - aqua w/marigold overlay
 _____ 96. Basketweave Open Edge ruffled basket - vaseline
 1800 _____ 97. Stippled Grape & Cable PCE bowl - aqua opal - extremely rare & nice, a sought after piece, nice!
 _____ 98. Heavy Grape 8" plate - marigold
 _____ 99. Captive Rose CRE bowl - green - super
 _____ 100. Luster Rose fruit bowl - red - extremely rare & desirable, an outstanding piece
 _____ 101. God & Home tumbler - blue
 _____ 102. Milady tumbler - marigold - outstanding
 _____ 103. Milady tumbler - blue
 _____ 104. Grape & Cable cologne bottles (2) - green - nice, choice
 _____ 105. Grape & Cable cologne bottle - purple - nice
 _____ 106. Holly 3 in 1 edge bowl - lime green
 _____ 107. N's Flute 15" funeral vase - purple - very nice
 _____ 108. N's Flute 12 1/2" funeral vase - green
 _____ 109. Fisherman's mug - purple - nice
 _____ 110. Fisherman's mug - marigold
 2100 _____ 111. Homestead Chop plate - blue - signed Nuart, has internal hit on edge, insignificant on a piece of this caliber, an extremely rare plate!
 _____ 112. Homestead Chop plate - amber - minor pinpoint on edge, very rare & desirable, pretty!
 _____ 113. Homestead Chop plate - marigold - pretty
 _____ 114. Orange Tree goblet - aqua - rare color

- ___ 115. Orange Tree goblet - blue - also quite rare
- ___ 116. N's Stippled Strawberry ruffled bowl - ice green - extremely rare & desirable, nice!
- ___ 117. N's Stippled Strawberry ruffled bowl - horehound - very pretty, a favorite in the sale
- ___ 118. Imperial Grape wine - purple
- ___ 119. Imperial Grape wine - lime green
- ___ 120. Imperial Grape wine - olive/lime green
- ___ 121. Imperial Grape wine - helios green
- ___ 122. Milady 5 pc. tankard water set - blue - very rare tankard set, pretty
- ___ 123. Leaf & Beads rosebowl - aqua opal - butterscotch
- ___ 124. Leaf & Beads rosebowl - marigold
- ___ 125. Leaf & Beads rosebowl w/rayed interior - purple
- ___ 126. Hearts & Flowers ruffled compote - ice blue - extremely rare color & very pretty example, pinpoint on base
- ___ 127. Hearts & Flowers ruffled compote - purple - very nice
- ___ 128. Hearts & Flowers ruffled compote - white
- ___ 129. Harvest Poppy ruffled compote - marigold
- ___ 130. Bee on Flower hatpin - purple - rare!
- ___ 131. Embroidered Circles hatpins (2) - purple - choice
- ___ 132. Tufted Throw pillow hatpin - purple
- ___ 133. Six Plums hatpin - purple
- ___ 134. Fluffy Peacock 7 pc. water set - amethyst - super!
- ___ 135. Stippled Three Fruits ruffled bowl - aqua opal - super nice example, lots of opal w/multi color irid.
- ___ 136. Stippled Three Fruits ruffled bowl - white - very scarce & nice
- ___ 137. Stippled Three Fruits ruffled bowl - amethyst - very pretty
- ___ 138. Stippled Three Fruits ruffled bowl - marigold - dark & nice
- ___ 139. M'burg Holly Sprig card tray shaped bon bon - green - radium & pretty
- ___ 140. M'burg Holly Sprig card tray shaped bon bon - amethyst - radium
- ___ 141. Imperial Grape 9" plate - amber - extremely rare color, only a few around, pretty
- ___ 142. Imperial Grape 9" plate - marigold
- /000 143. N's Town Pump - purple - always in demand
- ___ 144. Grape & Cable handled nappy - green - made from punch cup
- ___ 145. Peacock & Grape 3 in 1 edge bowl - peach opal - pretty
- ___ 146. Peacock & Grape 3 in 1 edge bowl - amethyst
- ___ 147. M'burg Peacock at Urn 10" ruffled bowl - green - satin & super
- ___ 148. M'burg Peacock at Urn 10" ruffled bowl - marigold - satin
- ___ 149. Acorn Burrs tumbler - purple
- ___ 150. Orange Tree & Scroll tumbler - blue
- ___ 151. Imperial Grape tumbler - purple - super
- ___ 152. Thumbprint & Ovals vase - purple -

- extremely rare, a super piece
- ___ 153. Grape & Cable PCE bowl - green - chip on point
- ___ 154. Many Fruits 8 pc. punch set - purple - outstanding irid., a great one!
- ___ 155. Double Stemmed Rose dome ftd plate - white
- ___ 156. Concord ruffled bowl - amethyst - nice
- ___ 157. Fenton's Peacock at Urn IC shaped bowl - green - scarce color
- ___ 158. Fashion rosebowl - green - extremely rare color, just a few known
- ___ 159. Fashion rosebowl - marigold
- ___ 160. Strawberry epergne - purple - a very rare epergne, and very pretty, A Dugan superstar, has minor hole repair
- ___ 161. Kittens 2 sides up bowl - marigold - nice
- ___ 162. Lattice & Poinsettia ruffled ftd bowl - amethyst - very pretty for this scarce bowl
- ___ 163. Daisy Wreath round bowl - marigold on milkglass - very pretty
- ___ 164. Drapery 8 1/2" vase - aqua - a super vase in a very rare color, a dandy
- ___ 165. Drapery 9" vase - lime green - a unique vase. very rare & desirable, pretty, has marigold overlay
- ___ 166. Drapery 8" vase - ice green - scarce
- ___ 167. Drapery 8" vase - marigold - dark and nice
- ___ 168. Rose Show ruffled bowl - aqua opal - outstanding, lots of opal & very pretty
- ___ 169. Stag & Holly large ftd IC shaped bowl - marigold
- ___ 170. Perfection tumbler - amethyst - very scarce tumbler, radium & nice
- ___ 171. File tumbler - marigold
- ___ 172. Diamond Lace tumbler - purple - pretty
- ___ 173. Hearts & Flowers ruffled bowl - ice blue - pretty
- ___ 174. Hearts & Flowers ruffled bowl - white - pulled point & pinhead
- ___ 175. Fenton's Grape & Cable ruffled 7" bowl - green - pretty
- ___ 176. Fenton's Grape & Cable ruffled 7" bowl - vaseline - heavy marigold irid., nice
- ___ 177. Three Fruits spt ftd ruffled bowl - ice blue - very pretty, extremely rare, has nice irid.
- ___ 178. Three Fruits spt ftd ruffled bowl - ice green - very pretty, dark ice green
- ___ 179. Scroll Embossed 9" plate - purple - super!
- ___ 180. Peacock & Grape spt ftd 9" plate - green - very rare plate
- ___ 181. Peacock & Grape spt ftd 9" plate - marigold - very nice
- ___ 182. Ripple 9" vase - green
- ___ 183. M'burg Peacock master berry bowl - amethyst - radium & nice
- ___ 184. M'burg Peacock berry bowls (6) - amethyst - super radium irid., choice
- ___ 185. Boggy Boyou 5 1/2" vase - marigold
- ___ 186. Tree Trunk mid-size funeral vase - green - very pretty, a nice vase
- ___ 187. Strawberry PCE bowl w/BW back - green - very pretty

- 1500 188. Eagle Furniture adv. 6" plate - amethyst - a dandy, rare & desirable
189. Strawberry hatpin - green - extremely rare
190. Basket Flower hatpin - purple
191. Hearts & Cross haptin - purple
192. Squares & Triangles haptin - purple
- 1200 193. M'burg Blackberry Wreath 10" bowl - blue - extremely rare M'burg color
194. Butterfly & Tulip ftd square bowl - marigold
195. Coin Spot ruffled compote - ice green - has stretch effect & very rare
196. Peacock & Grape ruffled bowl - amethyst - spectacular irid.
197. Peacock & Grape ruffled bowl - marigold - also very nice
198. Stippled Peacocks 9" plate - blue - a super dandy plate
199. Florentine candlesticks - marigold
- 2350 200. M'burg Deep Grape compote - marigold - outstanding & extremely rare, satin irid.
201. Beaded Cable rosebowl - aqua opal - very nice
202. Beaded Cable rosebowl - blue - has crack in base
203. N's Tree Trunk 17" funeral vase - purple - extremely rare & desirable, has plunger foot, always in demand
204. Wreath of Roses bon bon - amethyst
- 1300 205. Lotus & Grape card tray shaped bon bon - red slag - rare bon bon
206. Lotus & Grape ruffled bon bon - green
207. N's Bushel Basket - aqua opal - very nice w/lots of opal, butterscotch irid.
208. N's Bushel Basket - marigold
209. Captive Rose 9" plate - blue - very scarce & nice
210. Captive Rose 9" plate - marigold - very scarce
211. N's Poppy pickle dish - blue - pretty
212. Dugan Vintage dome ftd ruffled bowl - green - very pretty, Dugan green is very rare!
213. Inverted Feather wine glass - marigold - extremely rare, a must for wine glass collectors
214. Portland wine glass - marigold - very rare
215. Diamond & Sunburst wine - purple - very pretty
216. Grape & Cable 8 pc. punch set - purple - pretty, a nice set
217. Butterfly & Fern water pitcher - marigold
218. Butterfly & Fern tumbler - marigold
219. Butterfly & Fern tumbler - green - minor nicks on base
220. M'burg Fleur De Lis dome ftd 3 in 1 edge bowl - green - satin & very pretty
221. Basketweave Open Edge 2 sides up hatshape - red
222. Basketweave Open Edge 2 sides up hatshape - marigold
223. M'burg Peacock at Urn 10" IC shaped bowl - amethyst - satin, very scarce bowl
224. Dandelion mug - aqua opal - very nice, collector's favorite
225. Maypole 6" miniature vase - purple - unusual piece, very rare
226. M'burg Elk's paperweight - amethyst - extremely rare & desirable, seldom sold
227. Imperial paperweight - purple - has two bruises on top edge, rare & desirable, a tough piece to get in any condition
228. Dugan's Cherries 6" CRE plate - purple - scarce
229. Dugan's Cherries low ruffled bowl - purple - scarce
230. Stippled Grape & Cable 10" ruffled bowl - purple - pretty
231. Good Luck 9" plate - amethyst - nice
232. Grape & Cable centerpiece bowl - blue - extremely rare color, shaped like a giant rosebowl
233. Peacock Tail tri-cornered 6" dish - green
234. Peacocks PCE bowl - purple - very scarce
235. Swan salt - marigold
236. Stippled Three Fruits collar based bowl - ice blue - extremely rare, one of just a handful known w/the collar base
237. Stippled Three Fruits collar based bowl - blue - also a rare color
238. Stippled Three Fruits collar based bowl - horehound - super pretty, has manufacture open bubble on base, rare
239. Stippled Three Fruits collar based bowl - pastel marigold
240. Grape & Cable handgrip plate - green - nice
241. Peacock at the Fountain tumbler - ice blue
242. Peacock at the Fountain tumbler - purple - super!
243. Fluffy Peacock tumbler - blue
- 1400 244. M'burg Bernheimer Brothers Many Stars ruffled bowl - blue - very rare & desirable, satin
245. Dahlia creamer - white - has gold paint
246. Heart & Vine 9" plate - blue - very pretty, a nice plate
247. 1911 Shriner's champagne - clear
248. Rose Show 9" plate - white - a little deep, but pretty
249. Fine Cut & Roses rosebowl - white - minor buffing on feet, scarce
250. Fine Cut & Roses rosebowl - ice blue - pinhead on foot
251. Fine Cut & Roses rosebowl - purple - minor nicks on feet, outstanding irid.
252. Fine Cut & Roses rosebowl - purple - minor nicks on feet, has plain interior
253. M'burg Big Fish IC shaped bowl - amethyst - radium
254. Imperial Grape ruffled bowl - purple - pretty
255. Grape & Cable master IC shaped bowl - marigold - very scarce
256. Grape & Cable 11" ruffled bowl - blue - very rare color for this bowl, edge buffed
257. Grape & Cable 11" ruffled bowl - marigold
258. Colonial Lady vase - purple - super pretty,

rare & desirable

- ____ 259. Grape & Cable sweetmeat - purple
____ 260. Grape & Cable humidor - purple
1000 261. Scarab Shell hatpin - lavender - very rare color, pretty
____ 262. Leaf & Veil hatpin - purple - pretty
____ 263. Grape Clusters hatpin - lavender
____ 264. Flower Arcs hatpin - purple
____ 265. Cosmos & Cane goblet shaped whimsey rosebowl - marigold - very pretty, rare
____ 266. Strawberry ruffled bowl w/BW back - green
____ 267. Good Luck PCE bowl w/ribbed back - green - super!
____ 268. Good Luck PCE bowl w/ribbed back - purple - has blue irid., pretty
____ 269. Question Mark CRE ftd plate - peach opal - nice
____ 270. Basketweave Open Edge JIP shaped basket - red - scarce in this shape
____ 271. Basketweave Open Edge JIP shaped basket - aqua
____ 271a. Basketweave Open Edge JIP shaped basket - smokey blue
____ 272. Banded Grape & Cable hatpin holder - purple - very nice
____ 273. Banded Grape & Cable hatpin holder - marigold
____ 274. Persian Medallion chop plate - blue - a nice example, rare & pretty
____ 275. Horse Medallion 7" plate - marigold
____ 276. Three Fruits dome ftd bowl - white - very nice
____ 277. Jeweled Heart CRE 6" plate - peach opal
____ 278. M'burg Hobnail Swirl spittoon - amethyst - a great piece
____ 279. Windflower ruffled bowl - marigold
____ 280. M'burg Strawberry tri-cornered CRE bowl - amethyst - radium & extremely rare
____ 281. Octagon cordial - marigold - a rare little cordial, must for miniature collectors
1000 282. Leaf Chain 7" ruffled bowl - red - super pretty, hard to find
____ 283. Pinecone 6" saucer shaped plate - marigold - dark & super
____ 284. Pinecone 6" saucer shaped plate - blue - nice
____ 285. Stream of Hearts ruffled compote - marigold
____ 286. Peacock at the Fountain creamer - ice blue - very rare, fill out your set
____ 287. Peacock at the Fountain spooner - ice blue - very rare
____ 288. Pond Lily bon bon - white - scarce color
____ 289. M'burg Trout & Fly 3 in 1 edge bowl - marigold - satin & pretty
____ 290. Dandelion tumbler - purple
____ 291. Orange Tree ftd tumbler - blue
____ 292. Peacocks 9" plate w/ribbed back - purple - very pretty, a nice plate
____ 293. Peacocks 9" plate w/ribbed back - blue
____ 294. Peacocks 9" plate w/ribbed back - ice green - super example
____ 295. Little Flowers ruffled sauce - aqua
____ 296. Little Flowers round sauce - amethyst
____ 297. Peacock Tail 7" plate or low bowl - green - unusual shape
____ 298. Four Flowers chop plate - peach opal - has Soda Gold back, very scarce & pretty
____ 299. M'burg Poppy round compote - purple - radium & pretty
____ 300. M'burg Poppy round compote - marigold - satin & super
____ 301. Vintage ruffled 7" bowl - vaseline - scarce color
____ 302. Fanciful ruffled low bowl - peach opal - pretty
____ 303. Wishbone ftd ruffled bowl - horehound - very rare color & pretty
____ 304. Palm Beach whimsey banana boat shaped bowl - marigold
____ 305. Diamond Points 6 1/2" squatty vase - green - pretty
____ 306. M'burg Strawberry ruffled compote - amethyst - radium & super, a very pretty piece
____ 307. N's Eight Sided Bushel Basket - ice blue - rare color
____ 308. Stippled Good Luck 9" plate w/ribbed back - marigold - pretty, very rare stippled
____ 309. Orange Tree 9" plate - marigold
____ 310. Tree Trunk 6 1/2" squatty vase - purple - super!
1250 311. Butterfly & Berry hatpin holder - blue - outstanding example, rare!
1900 312. Butterfly & Berry hatpin holder - marigold - even from top to bottom, very nice, rare!
____ 313. Nippon ruffled bowl - purple - pretty
____ 314. M'burg Strawberry Wreath Variant 8" ruffled bowl - amethyst - radium & super
____ 315. Grape Vine Lattice 6" plate - amethyst
____ 316. Holly ruffled bowl - white
____ 317. Good Luck ruffled bowl w/ribbed back - blue - very pretty, an outstanding example
____ 318. Good Luck ruffled bowl w/BW back - marigold - nick on point
____ 319. Imperial Grape wine decanter - purple - nice
____ 320. Blackberry Open Edge ruffled hatshape - red - amberina base, very scarce
____ 321. Holly low bowl or plate - marigold
____ 322. Unlisted wine glass - light marigold - neat
____ 323. Kings Crown wine glass - light marigold
____ 324. Octagon wine glass - marigold
____ 325. Drapery rosebowl - aqua opal - very nice example
____ 326. Kittens toothpick - blue - very scarce & nice
1150 327. Formal hatpin holders (2) - marigold - choice, outstanding examples of this very rare piece
____ 328. Pinched Swirl rosebowl - peach opal
____ 329. Singing Birds mug - purple
____ 330. Beaded Shell mug - amethyst
____ 331. BoPeep mug - marigold - scarce
____ 332. Piazza hatpin - purple
____ 333. Belle hatpin - purple
____ 334. Faceted Dome hatpin - purple
1900 335. 1914 Parkersburg Elk's plate - blue - very pretty & extremely rare

- ___ 336. Strawberry 9" plate w/BW back - purple
- ___ 337. Estate miniature vase - smoke
- ___ 338. Fenton's Peacock at Urn 9" plate - marigold - scarce
- ___ **339. Daisy Squares stemmed rosebowl w/CRE top 2 sides up - marigold - very scarce!**
- ___ 340. Panelled candlesticks - smoke
- ___ 341. Imperial Grape water goblet - purple
- 1800 ___ **342. Hearts & Flowers 9" plate - purple - a super, super plate, outstanding**
- ___ **343. Hearts & Flowers 9" plate - ice blue - extremely rare, one point has chip**
- ___ 344. Fanciful 9" plate - marigold
- ___ 345. Imperial Jewels spittoon shaped vase - amethyst stretch
- ___ 346. Imperial Jewels ruffled top vase - amethyst stretch
- ___ 347. Cherry Chain 6" plate - blue - very pretty
- ___ 348. 1976 HOACGA whiskey decanter set - red
- 1400 ___ **349. Blackberry Open Edge whimsey 7 1/2" vase - marigold - very rare & desirable**
- ___ 350. Pillow & Sunburst 9" plate - amethyst
- ___ 351. Grape & Cable master punch bowl base - purple
- ___ 352. Unusual centerpiece bowl ? - marigold - only one I've ever seen
- ___ 353. Rose Garden 9" vase - blue - cracked but rare
- ___ 354. Leaf Tiers lamp shade - marigold on moonstone
- ___ **355. Stippled Three Fruits 9" plate w/ribbed back - aqua opal - opal on tips, super pretty, super rare & desirable!**

- ___ **356. Stippled Three Fruits 9" plate w/ribbed back - purple - super blue irid., a dandy!**
- ___ **357. Stippled Three Fruits 9" plate w/ribbed back - marigold - pumpkin color irid., great!**
- ___ **358. Stippled Three Fruits 9" plate w/ribbed back - pastel marigold - outstanding pastel irid., pretty!**
- ___ **359. Stippled Three Fruits 9" plate w/ribbed back - clambroth - multi color irid., very pretty**
- ___ 360. Twins fruit bowl base - smoke
- ___ 361. Kittens handled basket - aqua opal - Fenton
- ___ 362. Daisy & Button little spittoon - marigold - Crider irid.
- ___ 363. Dewey tumbler - marigold - Crider irid.
- ___ 364. JIP vase - marigold - Crider irid.
- ___ 365. Spittoon shaped toothpick - aqua opal - Crider irid.
- ___ 366. S-Repeat spittoon - amber - Crider irid., made from toothpick
- ___ 367. Butterfly & Berry JIP shaped vase - aqua opal - Lavay
- ___ 368. Ranger creamer - light marigold
- ___ 369. Unusual cruet w/stopper - marigold
- ___ 370. Leaf Tiers 7" squatty vase - purple - hit on side of vase
- ___ 371. Beaded Bullseye vase - purple - cracked
- ___ 372. Tree of Life tumbler - marigold
- ___ 373. Pillar & Flute rosebowl - clambroth - has Imperial Cross mark
- ___ 374. Interior Panels bowl- white -Imperial Cross mark





Seeck Auctions
405 1st Street
Grafton, Iowa 50440

