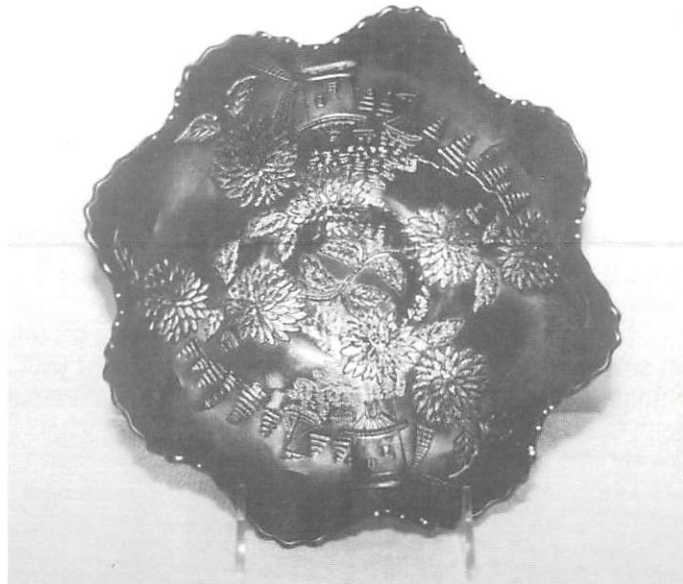


OUTSTANDING CARNIVAL GLASS

AUCTION

SATURDAY, APRIL 1, 1995 -- 9:30 A.M.

Joseph and Blanche Williams Collection



**Holiday Inn -- St. Louis West/St. Peters
4221 South Outer Road
St. Peters, MO**

(Cave Springs Exit #225 off of I-170, take South frontage road West)

Call (314) 928-1500 for reservations



**JIM SEECK
515-424-1116**

Seeck Auctions

**VERN WHITE
515-748-2923**

CARNIVAL GLASS AUCTION

SATURDAY, APRIL 1, 1995 -- 9:30 A.M.

Holiday Inn -- St. Louis West/St. Peters -- St. Peters, MO

Joseph and Blanche Williams Collection

Seek Auctions is pleased to be selling the Joseph and Blanche Williams collection from Eustis, Florida. Joe and Blanche have been collecting Carnival Glass for many years and have decided to sell their collection on Saturday, April 1st at the Holiday Inn in St. Peters, Missouri. The highlight of their auction is a fantastic red Chrysanthemum ruffled bowl, one of the finest we have seen. Hope to see everyone on April Fool's Day! (Don't worry we'll be there!)

PREVIEW: Friday, March 31, 3:00 P.M.

RESERVATIONS: Call (314)928-1500 (Please mention you are with the Seek Auction)

WRITE-IN BID POLICY

1. Write-in bids will be accepted by sending the numbers of the item(s) desired and the amount bid on each to: Seek Auctions, 405 1st St., Grafton, IA 50440.
2. If known by Auction Company, bids may be done over the telephone. (515)424-1116.
3. There is a \$5 handling charge for each successful bid. Shipping and insurance charges are additional.
4. Bidders will be notified by a phone call if their bid(s) are successful. This call will be made 1 - 3 days after the auction is over.
5. Please have all bids in by Wednesday, March 29th. All bids (by mail or phone) after this date will not be carried out.
6. If you do not receive an item that sold for less than your bid, assume we cancelled your bid because the piece of glass had below average color, manufacture problem, damage or was not listed correctly.
7. Please, no calls concerning write-in bids until Monday, April 3rd.
8. To receive price lists send: \$20 -- for this auction and next 7 auctions
\$5 -- for only this auction or individual auction (please specify)

Send to the above address.

NOTES

- ___ 1. Embossed Scroll 9" ruffled bowls(2) - marigold - has file back
- ___ 2. Peacock Tail 9" 3 in 1 edge bowl - amethyst - pretty
- ___ 3. Feathered Serpent round bowl - green - pretty
- ___ 4. Feathered Serpent round bowl - marigold - pretty
- ___ 5. **Chrysanthemum ruffled bowl - red - outstanding red iridescence on super red color, a great rarity**
- ___ 6. Thistle & Thorn creamer & sugar - marigold
- ___ 7. Orange Tree 10 pc. punch set - marigold
- ___ 8. M'burg Blackberry Wreath Variant ruffled sauce - green
- ___ 9. Stippled Rays 6" plate - marigold
- ___ 10. Three in One 6" plate - marigold
- ___ 11. **Thistle banana boat - blue - pretty**
- ___ 12. Thistle banana boat - marigold
- ___ 13. Victorian ruffled bowl - amethyst - chip on base
- ___ 14. Dragon & Lotus ruffled bowl - amber - scarce
- ___ 15. Tree Trunk 7" squatly vase - green - pretty
- ___ 16. Tree Trunk 7" squatly vase - amethyst - super
- ___ 17. Tree Trunk 7" squatly vase - marigold
- ___ 18. **Heavy Grape 8"round plate - marigold - unusual shape, no scallops on edge**
- ___ 19. Open Rose 9" plate - marigold - chip on edge
- ___ 20. Rustic 10" vase - white
- ___ 21. **Grape & Cable 11" ruffled bowl - amethyst - nice**
- ___ 22. **Grape & Cable 11" ruffled bowl - marigold**
- ___ 23. Autumn Acorn ruffled bowl - blue
- ___ 24. Autumn Acorn ruffled bowl - amethyst
- ___ 25. Autumn Acorn 3 in 1 edge bowl - marigold
- ___ 26. Holly ruffled compote - pastel blue - marigold overlay
- ___ 27. Holly ruffled compote - blue
- ___ 28. Holly ruffled compote - marigold
- ___ 29. **Leaf & Beads rosebowl - aqua opal - butterscotch and beautiful**
- ___ 30. Leaf & Beads rosebowl - purple - pretty
- ___ 31. **Broken Arches 14 pc punch set - purple - outstanding blue iridescence, as nice as they get**
- ___ 32. Blackberry miniature compote - blue
- ___ 33. Feathered Serpent round sauce - green
- ___ 34. Biscuit Jar - marigold - cut pattern similar to curved star
- ___ 35. **Fanciful ruffled bowl - peach opal - super**
- ___ 36. **Fanciful ruffled bowl - white - very nice**
- ___ 37. Whirling Leaves ruffled bowl - amethyst - radium
- ___ 38. Two Flowers ftd round bowls(2) - marigold - choice
- ___ 39. **N's Peacock at Urn IC bowl - ice green - very rare and nice**
- ___ 40. Beaded Bullseye 10" vase - green
- ___ 41. Beaded Bullseye 11" vase - marigold
- ___ 42. Beaded Bullseye 9" vase - marigold
- ___ 43. Beaded Bullseye 7" vase - marigold
- ___ 44. Morning Glory 6" miniature vase - green
- ___ 45. Morning Glory 5" miniature vase - purple - cracked
- ___ 46. Morning Glory 5" miniature vase - marigold
- ___ 47. **Persian Garden fruit bowl & base - purple - super spectacular and very rare**
- ___ 48. **Persian Garden fruit bowl & base - marigold - scarce**
- ___ 49. Vintage 8 ruffled bowl - green - super
- ___ 50. Vintage 6 ruffled bowls(2) - amethyst - choice
- ___ 51. **Mikado ruffled compote - marigold - nice**
- ___ 52. **Butterfly & Berry 7 pc. waterset - marigold - nice**
- ___ 53. Corinth 9" JIP vase - aqua teal
- ___ 54. Corinth 9" JIP vase - amethyst
- ___ 55. Holly IC shaped bowl - blue
- ___ 56. Holly IC shaped bowl - marigold - super
- ___ 57. Morning Glory JIP 11" vase - marigold
- ___ 58. Morning Glory JIP 8" vase - marigold
- ___ 59. **Holly ruffled hatshape - red - super nice**
- ___ 60. **Holly ruffled hatshape - aqua - very pretty**
- ___ 61. Fine Cut & Roses candy dish - white
- ___ 62. Fine Cut & Roses candy dish - ice blue - chip on feet
- ___ 63. Fine Cut & Roses candy dish - purple
- ___ 64. Orange Tree fruit bowl - marigold
- ___ 65. **Brooklyn Bridge ruffled bowl - marigold - very pretty example**
- ___ 66. Six Petals tri-cornered bowl - peach opal
- ___ 67. Six Petals CRE ruffled bowl - peach opal - nice
- ___ 68. **Grape & Cable 9" plate w/BW back - marigold**
- ___ 69. **Grape & Cable Variant 9" plate w/BW back - marigold**
- ___ 70. **Grape & Cable Variant 9" plate w/plain back - purple**
- ___ 71. Grape & Cable 9" plate w/BW back - green - chip on point
- ___ 72. Corinth 6" vase w/pinched top - peach opal
- ___ 73. Corinth 5" vase - peach opal - 6" wide
- ___ 74. Corinth 9" vase - peach opal
- ___ 75. **Rustic 23 1/2" funeral vase w/plunger base - blue - super pretty & extremely tall! tallest I think I've sold**
- ___ 76. Spiril candlesticks - marigold
- ___ 77. Rustic 17" vase - blue
- ___ 78. Rustic 17" CRE vase - blue
- ___ 79. **Horse Medallion 7" plate - marigold - very nice example**
- ___ 80. 1902 Shriners champagne - clear
- ___ 81. 1908 Shriners champagne - clear
- ___ 82. 1909 Shriners champagne - clear
- ___ 83. 1910 Shriners champagne - clear
- ___ 84. 1911 Shriners champagne - clear
- ___ 85. **Dahlia water pitcher - white - very rare item, a must for pitcher collectors**
- ___ 86. Stippled Daisy & Plume rosebowl w/Blackberry interior - amethyst
- ___ 87. Stippled Daisy & Plume rosebowl w/Rayed interior - purple
- ___ 88. Stag & Holly large ftd IC shaped bowl - marigold - nice
- ___ 89. Imperial Grape 7 pc. water set - marigold
- ___ 90. **Grape & Cable cracker jar - smoke -**

- extremely rare color, lid is purple**
- ___ 91. Dogwood Spray dome ftd ruffled bowl - purple - pretty
- ___ 92. Dogwood Spray dome ftd ruffled bowl - marigold
- ___ 93. M'burg Mayan IC shaped bowl - green - pretty
- ___ 94. Fenton's Grape & Cable ball ftd ruffled bowl - smokey blue
- ___ 95. Fenton's Grape & Cable ball ftd ruffled bowl - marigold
- ___ 96. Vintage ruffled compote - green
- ___ 97. Vintage ruffled compote - marigold
- ___ **98. Petal & Fan ruffled 11" bowl - purple - super!**
- ___ 99. Feathered Serpent tri-cornered sauce - green
- ___ 100. Peacock Tail tri-cornered sauce - green
- ___ 101. Grape & Cable PCE bowl w/BW back - green
- ___ 102. Cherry Chain large ruffled bowl - marigold
- ___ 103. Mirrored Lotus IC shaped 7" bowl - blue
- ___ **104. Parlor Panels 3 3/4" squatty vase - smoke - extremely rare item, minor rub on edge**
- ___ **105. Kittens cup & saucer - marigold**
- ___ **106. Kittens toothpick - marigold**
- ___ **107. Kittens square ruffled bowl - marigold**
- ___ **108. Kittens ruffled bowls (2) - marigold - choice**
- ___ **109. Butterfly & Berry ruffled master berry bowl - blue - pretty**
- ___ 110. Butterfly & Berry round master berry bowl - marigold
- ___ **111. Fenton's Peacock at Urn ruffled compote - vaseline - marigold overlay**
- ___ **112. Fenton's Peacock at Urn ruffled compote - blue**
- ___ 113. N's Bushel Basket - purple
- ___ 114. N's Bushel Basket - marigold - small chip on edge
- ___ **115. Tree Trunk mid size funeral vase - green - super pretty, very scarce**
- ___ 116. Fan hddl gravy boat - peach opal
- ___ 117. Fan sugar bowl - peach opal
- ___ 118. Holly ruffled bowl - blue - super
- ___ 119. Grape & Cable ruffled bowl w/BW - green
- ___ 120. Raindrops 3 in 1 edge dome ftd bowls (2) - peach opal - choice
- ___ 121. Drapery 8" vase - ice green - chip on edge
- ___ 122. Drapery 8" vase - white
- ___ 123. Persian Medallion 10" ruffled bowl - blue
- ___ **124. Captive Rose 9" plate - blue - fantastic!**
- ___ 125. Persian Medallion 2 hddl card tray shaped bon bon - green
- ___ 126. Persian Medallion 2 hddl bon bon - blue
- ___ 127. Persian Medallion 2 hddl bon bon - marigold
- ___ 128. Thistle ruffled bowl w/Horlacher adv. - green - scarce with adv.
- ___ 129. Thistle ruffled bowl - green
- ___ 130. Two Flowers large ruffled ftd bowl - marigold
- ___ 131. Cosmos large ruffled bowl - marigold
- ___ **132. Morning Glory 18" funeral vases (2) - purple - a nice pair for your fireplace**
- ___ **133. Morning Glory 18" funeral vase - marigold**
- ___ 134. Beads & Flowers 6" plates (2) - peach opal - choice
- ___ 135. Peacock at Urn IC sauce - marigold
- ___ 136. Peacock at Urn IC sauce - custard - not carnival
- ___ 137. M'burg Cosmos 6" IC sauce - green - radium & nice
- ___ **138. Nautilus sugar bowl - peach opal - signed in script**
- ___ 139. Holly 3 in 1 edge ruffled bowl - amethyst
- ___ 140. Holly 3 in 1 edge ruffled bowls (2) - blue - choice
- ___ 141. Beaded Cable rosebowl - amethyst
- ___ 142. Beaded Cable rosebowl - marigold
- ___ 143. Beaded Cable rosebowl - green - rayed interior
- ___ 144. Big Basketweave 9" vase - blue
- ___ 145. Big Basketweave 9 1/2" vase - marigold
- ___ **146. Four-Seventy-Four milk pitcher - olive green scarce**
- ___ 147. Flowers & Frames CRE tri-cornered dome ftd bowl - peach opal
- ___ 148. Persian Medallion hair receiver - marigold
- ___ **149. Fenton's Peacock at Urn ruffled bowl - amethyst - very scarce**
- ___ **150. Fenton's Peacock at Urn ruffled bowl - blue - super pretty**
- ___ 151. Peach sugar bottom - white
- ___ **152. Wishbone & Spades chop plate - purple - super pretty**
- ___ 153. Mary Ann handled vase - marigold
- ___ 154. M'burg Rays & Ribbons ruffled bowl - amethyst - satin and super
- ___ 155. M'burg Holly Sprig 10" crimped edge bowl - green - radium, nice
- ___ 156. Gothic Arches 14 1/2" vase - marigold
- ___ 157. Scroll Embossed round bowl - purple - pretty
- ___ 158. Constellation compote - white
- ___ 159. Strawberry card tray shaped bon bon - marigold
- ___ **160. Hearts & Flowers 9" plate - amethyst - extremely rare**
- ___ 161. Floral & Grape 7 pc. water set - marigold
- ___ 162. Singing Birds mug - lavender - rare color
- ___ 163. Singing Birds mug - purple
- ___ 164. Singing Birds mug - marigold
- ___ 165. Greek Key ruffled bowl - purple
- ___ 166. Grape Delight rosebowl - white
- ___ 167. Split Diamond covered butterdish - marigold
- ___ 168. Covered Hen - blue - English
- ___ 169. Open Rose rosebowl - green
- ___ 170. Diamond Rings rosebowl - marigold
- ___ 171. Vintage 3 in 1 edge bowl - green
- ___ 172. Vintage 3 in 1 edge bowl - marigold - chip on edge
- ___ 173. Lotus & Grape ruffled bowl - green
- ___ 174. Pop glasses in metal holder (6) - marigold - shaped like Coke glasses
- ___ 175. Imperial Grape 6" plate - marigold - nice
- ___ **176. Stippled Three Fruits ruffled bowl - purple - blue irid., nice**
- ___ 177. Stippled Three Fruits ruffled bowl - marigold
- ___ 178. Star of David & Bows dome ftd ruffled bowl - amethyst
- ___ 179. Strawberry 5 pc ruffled berry set - purple - nice set
- ___ 180. Wreath of Roses stemmed bon bon - blue

- ___ 181. Wreath of Roses stemmed bon bon - green
- ___ 182. Wreath of Roses stemmed bon bon - amethyst
- ___ 183. Grape Arbor tumblers (4) - marigold - choice
- ___ 184. Peacocks PCE bowl - marigold - chip on point
- ___ **185. Blackberry Open Edge ruffled hatshape - green**
- ___ 186. Blackberry Open Edge ruffled hatshape - marigold
- ___ 187. Butterflies card tray shaped bon bon - green
- ___ 188. Butterflies card tray shaped bon bon- marigold
- ___ 189. Grape & Cable 7" ruffled bowl - purple
- ___ 190. Dragon & Lotus spatula ftd ruffled bowl - green - crack in foot
- ___ 191. Peacock & Grape spt ftd ruffled bowl - green
- ___ 192. Fentons Grape & Cable spt ftd ruffled bowl - blue
- ___ 193. Two Flowers spt ftd round bowl - purple
- ___ 194. Fentons Grape & Cable fruit bowl w/Persian Medallion interior - marigold
- ___ 195. Maple Leaf 7 pc. berry set - marigold
- ___ **196. Zippered Loop 7" lamp w/4" base - marigold - nice**
- ___ 197. Holly square shaped hatshape - marigold
- ___ 198. Holly square shaped hatshape - blue - chip on base
- ___ **199. Town Pump - green - signed Robert Hansen**
- ___ **200. Stump toothpick - amethyst - unsigned Robert Hansen**
- ___ **201. Rabbit w/basket toothpick - amethyst - unsigned Robert Hansen**
- ___ 202. Enameled Cherries & Little Flowers 5 pc. waterset - blue
- ___ 203. Dragon & Lotus IC shaped bowl - marigold - nice
- ___ 204. Twins fruit bowl & base - marigold
- ___ **205. Grape & Cable dresser tray - marigold - pretty**
- ___ **206. Stippled Banded Grape & Cable dresser tray - marigold**
- ___ 207. Little Flowers 10" ruffled bowl - marigold
- ___ 208. Pony ruffled bowl - marigold
- ___ 209. Blackberry Bramble ruffled compote - marigold
- ___ 210. Birds & Cherries 2 hldd bon bon - green - nick on edge
- ___ **211. Orange Tree 9" plate - blue**
- ___ 212. Orange Tree 9" plate - pale marigold - lacks irid.
- ___ 213. Blackberry Block tumbler - blue
- ___ 214. Vintage fernery - marigold - dark & pretty
- ___ **215. N's Wide Panel 14" funeral vase w/4 1/2" base - marigold**
- ___ **216. N's Wide Panel 12" funeral vase w/4" base - green**
- ___ 217. Orange Tree tumbler - blue - chipped foot
- ___ 218. Fenton's Grape & Cable ball ftd IC shaped bowl - marigold
- ___ 219. Colonial candlesticks - smoke
- ___ 220. Split Diamond ftd fruit bowl - marigold
- ___ **221. M'burg Primrose ruffled bowl - amethyst - radium & nice**
- ___ **222. Poppy Show ruffled bowl - ice blue - a super piece, a collector's favorite**
- ___ **223. M'burg Primrose ruffled bowl - marigold - satin & nice**
- ___ 224. Ribbon Tie IC shaped bowl - amethyst
- ___ 225. M'burg Rosalind large size ruffled bowl - amethyst - pretty, has chip on edge
- ___ 226. Raspberry tumbler - marigold
- ___ 227. Raspberry tumbler - purple
- ___ 228. Waterlily 10" square CRE bowl - green - pattern is on back
- ___ 229. Good Luck ruffled bowl w/BW back - green - chip on back of point
- ___ 230. Good Luck ruffled bowl w/BW back - marigold - nice
- ___ 231. Fashion 22 pc. punch set - marigold
- ___ 232. Diamond Point 12" vase - amethyst
- ___ 233. Diamond Point 9" vase - marigold
- ___ **234. Four Flowers 6" plate - peach opal - nice**
- ___ 235. Ragged Robin 3 in 1 edge bowl - green - nice
- ___ 236. Peacock & Dahlia 7" round bowl - marigold
- ___ **237. Fishscale & Beads ruffled bowl - blue - very rare color for this piece, only one I've seen**
- ___ 238. Fishscale & Beads ruffled bowl - amethyst
- ___ 239. Hobstar covered sugar bowl - green
- ___ 240. Carnival Hobstar 4 piece table set - marigold
- ___ 241. Daisy Wreath ruffled bowl - peach opal
- ___ 242. Orange Tree powder jar - blue
- ___ 243. Orange Tree powder jar - marigold
- ___ 244. Florintine 8" candlesticks - amber
- ___ 245. Windflower ruffled bowl - marigold
- ___ 246. Little Fishes ruffled ftd sauce - marigold
- ___ 247. Two Fruits divided bon bon - marigold
- ___ 248. Roccoco vase - smoke
- ___ 249. Dugan's Cherries large ruffled bowl - purple - silver irid
- ___ **250. Stippled Grape & Cable 8 pc. punch set - blue - electric, and extremely rare.**
- ___ 251. Flowers & Frames deep ruffled bowl - peach opal
- ___ 252. Peacock & Grape ruffled bowl - blue
- ___ 253. Peacock & Grape ruffled bowl - green - silver irid.
- ___ **254. Panther ftd round sauce - green - extremely rare color**
- ___ 255. Panther ftd ruffled sauces - marigold
- ___ 256. Three Fruits 9" plate w/BW back - green
- ___ 257. Pinched Swirl tri-cornered vase - peach opal
- ___ **258. Fruits & Flowers ftd bon bon - blue - pretty blue irid.**
- ___ **259. Grape & Cable master berry bowl - amethyst - super, super irid.!**
- ___ 260. M'burg Blackberry Wreath large 3 in 1 edge bowl - amethyst - satin
- ___ 261. Lattice & Daisy ruffled hatshape - pastel marigold - pretty
- ___ 262. Orange Tree ruffled bowl - white
- ___ 263. M'burg Nesting Swan ruffled bowl - amethyst - satin & silvery, buffed edge
- ___ **264. Grape & Cable sweatmeat - amethyst - nice**
- ___ **265. Pacific Coast Mail Order House Fenton Grape & Cable fruit bowl - marigold - an extreme rarity, a must for all advertising**

collectors

- ___ 266. Unlisted English tumble up - marigold - tumbler has bad damage but still a neat set
- ___ 267. Heisey Old Williamsburg large candlestick w/prisms - marigold - nice
- ___ 268. M'burg Rays & Ribbons CRE ruffled bowl - marigold - radium and super
- ___ 269. Round-Up IC shaped bowl - peach opal
- ___ 270. Scroll Embossed 9" plate - marigold - super
- ___ 271. Stippled Grape & Cable bon bon - black amethyst - chip on edge
- ___ 272. Grape & Cable bon bon - amethyst
- ___ 273. Stippled Petal tri-cornerd dish - peach opal - pretty
- ___ **274. Miniature Flower basket - peach opal - rare, a cutie**
- ___ 275. Thin Rib & Drape 4 3/4" vase - marigold - dark & nice
- ___ 276. M'burg Feather & Heart tumbler (dated 1910) - marigold - rare!
- ___ 277. Jewel Heart CRE tri-cornered dish - peach opal
- ___ 278. Bells & Beads ruffled 6" bowl - peach opal
- ___ **279. Six Sided candlestick, just a single - marigold - nice**
- ___ 280. Inverted Coin Dot ruffled compote - peach opal - rare
- ___ 281. Wishbone ftd ruffled bowl - marigold - chip on back of point
- ___ 282. Fenton's Three Fruits 12 sided 9" plate - blue
- ___ 283. Fenton's Three Fruits 12 sided 9" plate - marigold
- ___ 284. Horse Medallion JIP footed bowl - marigold
- ___ 285. Raspberry gravy boat - marigold - nice
- ___ 286. Four Pillers w/Howard Furniture adv. - green - chip on base
- ___ **287. Imperial Grape wine decanter - smoke - very pretty and rare**
- ___ **288. Imperial Grape 5 pc. wine set - purple - very pretty**
- ___ **289. Rustic 21" funeral vase - blue very rare and nice**
- ___ 290. Pansy ruffled bowl - purple
- ___ 291. Star & File decanter w/stopper - marigold
- ___ 292. Acorn round bowl - powder blue
- ___ 293. Paneled Holly bon bon - marigold - scarce color
- ___ 294. Poinsettia milk pitcher - marigold
- ___ 295. Captive Rose 3 in 1 edge bowl - blue
- ___ 296. Three Fruits PCE bowls (2) - purple - choice
- ___ 297. Vintage deep round bowl - amethyst
- ___ **298. Apple Blossom Twigs banana boat shaped ruffled bowl - peach opal - very unusual shape and nice**
- ___ **299. N's Thin Rib 13 " mid size funeral vase - marigold**
- ___ 300. Pinecone 7" IC shaped bowl - blue
- ___ 301. Milady tumbler - blue
- ___ 302. Garden Path Variant deep ruffled bowl - marigold
- ___ 303. Grape & Cable single handled nappy - amethyst - nice
- ___ 304. Ripple 16" vase - marigold - 4" base
- ___ 305. Three Fruits ruffled bowl w/BW - marigold
- ___ 306. Imperial Grape carafe - marigold
- ___ 307. Three Fruits dome ftd ruffled bowl - purple
- ___ 308. April Showers CRE 10" vase - marigold
- ___ 309. April Showers 10" vase - green
- ___ 310. Grape & Cable tumbler - green
- ___ 311. Grape & Cable tumblers (4) - purple
- ___ **312. Grape & Cable whiskey decanter - marigold**
- ___ **313. Grape & Cable shot glass - marigold**
- ___ 314. Orange Tree standard size mug - blue
- ___ 315. Orange Tree standard size mug - marigold
- ___ **316. Basketweave Open Edge ruffled hatshape - red - nice**
- ___ 317. Star & File hdd celery vase - marigold
- ___ 318. Wreathed Cherry banana boat sauce in frame - marigold
- ___ 319. Lined Lattice 12" vase - marigold - has feet, nice
- ___ 320. Lined Lattice 10" vase - marigold
- ___ 321. Birds & Cherries ruffled compote - amethyst
- ___ 322. Imperial Grape 6" berry bowl - purple
- ___ **323. Persian Garden 6" plate - white**
- ___ **324. Persian Garden 6" plate - marigold**
- ___ 325. Holly & Berry tri-cornered hdd nappy - peach opal
- ___ 326. Puzzle hdd bon bon - marigold
- ___ **327. Rose Show ruffled bowl - lime green - extremely rare color for this bowl, a great piece**
- ___ **328. Rose Show ruffled bowl - sapphire blue - another extremely rare color, wow!**
- ___ 329. Columbia 4" vase, flattened out like a plate on top - marigold - pretty
- ___ 330. Propeller stemmed 7 1/2" vase - marigold
- ___ 331. Holly JIP CRE hatshape - blue
- ___ 332. Petal & Fan ruffled sauce - peach opal
- ___ 333. N's Peacock at the Fountain tumblers - purple
- ___ 334. N's Peacock at the Fountain tumbler - blue
- ___ 335. Horse Medallion rosebowl - marigold
- ___ 336. Horse Medallion ruffled bowl - marigold
- ___ **337. Grape & Cable cologne bottle - purple**
- ___ 338. Holly Sprig card tray shaped bon bon - green - radium & pretty
- ___ 339. Sunflower spt ftd ruffled bowl - purple
- ___ 340. Octagon 4pc. wine set - marigold
- ___ 341. Blackberry Bramble CRE ruffled hat - marigold
- ___ 342. Double Scroll candlesticks - marigold
- ___ **343. Holly 9" plate - amethyst - super rare & super!**
- ___ **344. Holly 9" plate - blue - nice**
- ___ 345. Colonial 9" candlesticks - marigold
- ___ 346. Butterfly & Berry cvd sugar, spooner & creamer - marigold - choice
- ___ 347. Scroll Embossed ruffled sauce - purple - super
- ___ 348. Inverted Feather parfait - marigold
- ___ 349. Single Flower Framed CRE handgrip plate - peach opal
- ___ 350. Imperial Grape salt & pepper - smoke - marked IG
- ___ 351. Imperial Grape salt & pepper - marigold - marked IG

- ___ 352. Blackberry Wreath 8" IC shaped sauce - marigold - satin
- ___ 353. Whirling Star 14 pc. punch set - marigold - marked IG
- ___ 354. Acorn ruffled bowl - blue
- ___ 355. Double Dutch ftd round bowl - marigold
- ___ 356. Paneled candlesticks - marigold
- ___ 357. Sailboats round sauce - marigold
- ___ 358. Knotted Beads 9" vase - marigold
- ___ 359. Daisy & Plume stemmed rosebowl - marigold
- ___ 360. Grape & Cable ruffled sauce - marigold - pretty
- ___ **361. Jeweled Heard CRE 6" plate - peach opal**
- ___ 362. Lattice & Grape tumblers (4) - marigold - choice
- ___ **363. Grape & Cable hatpin holder - green - nice**
- ___ **364. Grape & Cable hatpin holder - amethyst - nice**
- ___ **365. Stretch glass 15" vase - celest blue - looks similar to Ripple**
- ___ 366. Butterfly & Fern tumbler - green
- ___ 367. Star Medallion small size flat tumbler - marigold
- ___ 368. Floral & Optic ftd round bowl - white
- ___ 369. Grape & Cable creamer - amethyst
- ___ 370. Rustic 15" vase - marigold
- ___ 371. Wreath of Roses ruffled compote - amethyst
- ___ **372. Fenton's Peacock at Urn IC bowl - amethyst**
- ___ **373. Fenton's Peacock at Urn IC bowl - blue**
- ___ 374. Coin Dot deep round bowl - green
- ___ 375. M'burg Blackberry Wreath 7" ruffled bowl - green - satin
- ___ 376. Ripple 12" vase - helios green
- ___ 377. Butterfly & Berry 8" vase - marigold
- ___ 378. Paneled Diamond & Bows 8" vase - blue
- ___ 379. Golden Wedding whiskey bottle (full quart) - marigold - has all labels
- ___ 380. Golden Wedding whiskey bottle (pint) - marigold
- ___ 381. Leaf Chain 7" ruffled bowl - marigold
- ___ 382. Fenton's Grape & Cable round bowl - blue
- ___ 383. Orange Tree wine goblet - marigold
- ___ 384. Wine & Roses wine goblet - marigold
- ___ 385. Sailboats wine goblet - marigold
- ___ 386. Leaf Rays ruffled nappy - purple - nice
- ___ 387. Leaf Rays tri-cornered nappy - amethyst - nice
- ___ 388. Question Mark bon bon - peach opal - lots of opal
- ___ 389. Butterfly & Berry round berry dish - blue
- ___ 390. Caroline CRE round bowl - peach opal
- ___ 391. Colonial ftd mugs (6) - marigold
- ___ **392. M'burg Wild Rose large size kerosene lamp - green**
- ___ 393. Imperial Grape ruffled bowl - purple - blue irid., nick on base
- ___ 394. Imperial Grape ruffled bowl - marigold
- ___ 395. Lined Lattice ruffled hatshape - white
- ___ 396. Beads ruffled bowl - green
- ___ 397. Large ftd Shells, green, marigold, amethyst - choice
- ___ 398. Small ftd shell - amethyst
- ___ **399. Orange Tree hatpin holder - blue**
- ___ **400. Peacocks PCE bowl w/ plain back - white - very rare color, very few known**
- ___ 400a. Inverted Feather cracker jar - green
- ___ 401. Heisey cvd candy dish - marigold
- ___ 402. Rosette ruffled ftd bowl - amethyst
- ___ 403. Open Rose round bowl - smoke
- ___ 404. Fruits & Flowers ruffled sauce - amethyst
- ___ 405. Lined Lattice 6" plate - marigold
- ___ 406. Golden Harvest wine - marigold
- ___ 407. Golden Harvest wine - amethyst
- ___ 408. Diamond & Sunburst wines (2) - marigold
- ___ 409. Peacock Tail bon bon - marigold
- ___ 410. Cherry Chain round sauce - marigold
- ___ 411. Iris ruffled compote - marigold
- ___ 412. Premium candlesticks - marigold
- ___ 413. Woodpecker wallpocket - marigold
- ___ 414. Imperial Grape round 10" bowl - marigold
- ___ 415. Sailboat ruffled sauce - marigold
- ___ 416. Curved Hobstar large bowl - marigold
- ___ **417. Four Flowers large size ruffled bowl - purple - scarce**
- ___ 418. Dugan Cherries ruffled ftd bowl - marigold
- ___ 419. Luster Rose fernery - marigold
- ___ 420. Coin Spot compote - marigold
- ___ 421. Sparkling Orange Ade bottle - marigold - cute
- ___ 422. Split Diamond miniature creamer - marigold
- ___ 423. Ribbed candlesticks - marigold
- ___ 424. Alcohol & Hand Lotion bottles - marigold
- ___ 425. Headress ruffled bowl - marigold - English
- ___ 426. Caroline ruffled bowl - amethyst
- ___ 427. Kokomo rosebowl - marigold
- ___ 428. Blackberry Spray ruffled hatshape (2) - marigold - choice
- ___ **429. Diamond Rib 20" funeral vase - amethyst**
- ___ 430. Smooth Panels 15" vase - marigold
- ___ 431. Soda Gold console bowl - marigold
- ___ 432. Stork & Rushes mug - marigold
- ___ 433. Fenton Mothers day plate(3) - purple - 1971,1972,1973 sold as lot
- ___ 434. Imperial Wide Panel bowl - marigold - marked with Imperial cross mark
- ___ 435. Fenton Chelse cat - dark - not old
- ___ 436. Carnival Castle Scene painted shades (2) - marigold
- ___ 437. Swan salt - pink
- ___ 438. Swan salt - celest blue
- ___ 439. Rainbow ruffled bowl - purple
- ___ 440. Misc. damaged pieces (9)

Seeck Auctions

405 1st. St.

Grafton, Iowa 50440

FIRST CLASS