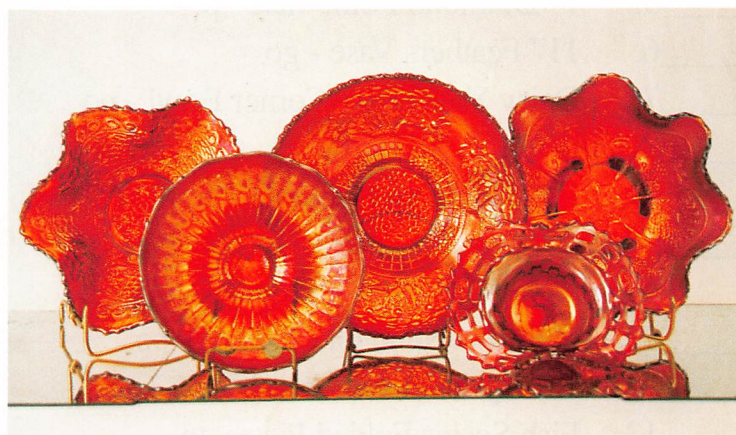


AUCTION



CARNIVAL GLASS AUCTION

Saturday, March 25, 1995 ♦ 9:30 a.m.



Harley Hotel
I-70 at Earth City Exit #231-B
St. Louis, Missouri



CARNIVAL GLASS AUCTION



Saturday, March 25, 1995 ♦ 9:30 a.m.

Harley Hotel 1-70 at Earth City Exit #231-B St. Louis, Missouri

Iva Rambo - owner

Iva Rambo has collected Carnival Glass for over 35 years. She has decided to sell her entire collection to the highest bidder at public auction without reserve. Her collection consists of fascinating **colors**, beautiful **rarities**, and with it all being in outstanding **condition**. Woody Auction is proud to offer this fine collection to the many Carnival Glass Collectors around the country.

Preview: Friday, 6 p.m.

Terms: Cash. Checks accepted with proper identification

Motel Reservations: May be made by calling the Harley directly at (314) 291-6800

Write-in Bids: Accepted with a written statement of the amount of your bid. **DEADLINE** - Thursday Noon.

PLEASE NOTE: There is a 5% handling charge which will be added to the selling price of all write-in bids. This is in addition to the cost of postage and insurance. Your write-in bid will be entered just as if you are present and bidding. For your convenience - **FAX - (316) 746-2145**

- | | |
|---|--|
| _____1. Tri-Corner Holly Nappy - po | _____19. Butterfly Two Handle Nappy - p |
| _____2. Fan Gravy Boat - po | _____20. 7" Imperial Grape Bowl - p |
| _____3. 7" Dutch Mill Bowl - m | _____21. Dutch Mill Sauce Bowl - p |
| _____4. 8" Stag and Holly Three Footed Bowl - m | _____22. Dahlia Berry Set with 5 sauces - m |
| _____5. 7" Diamond Point Vase - p | _____23. Drapery Vase, good iridescence - p |
| _____6. 11" Feathers Vase - go | _____24. 6" Heavy Grape Bowl - p |
| _____7. Daisy Variant Tri-Corner Bowl - po | _____25. Dolphins Compote - amyth |
| _____8. 6" Flute Vase - p | _____26. Three Fruits Compote - b, super color |
| _____9. Beaded Panel Compote - po | _____27. Three Fruits Three Footed Bowl, CRE - p |
| _____10. 10" Imperial Grape Bowl with Diamond and Fan Exterior - po | _____28. Ten Mums CRE Bowl - amyth |
| _____11. Nautilus Shell Gravy Boat - po | _____29. Scroll Embossed Compote - p |
| _____12. Honeycomb Rosebowl - m | _____30. Diamond Compote - po |
| _____13. Fish Scales Folded Plate - m | _____31. Flute Berry Set with 6 berry bowls - p |
| _____14. 3" Candy Dish - po | _____32. Inverted Strawberry Compote - m |
| _____15. Orange Tree Footed Rosebowl - m | _____33. Wreath of Roses Rosebowl - m |
| _____16. Pair of Mary Ann Vases - m | _____34. Inverted Strawberry Bowl - amyth |
| _____17. 10" Heavy Grape Ruffled Bowl - m | _____35. Inverted Thistle Bowl - amyth |
| _____18. Fish Scales Bowl and Underplate - amyth | _____36. Inverted Strawberry Table Set - m |
| | _____37. 5" Petal and Fan Bowl - po |
| | _____38. Two Fruits Divided Bowl - b |

- ____39. **Beaded Cable Footed Rosebowl - Aqua Opal**
- ____40. Beaded Cable Footed Rosebowl - b
- ____41. **Drapery Rosebowl - Aqua Opal**
- ____42. **Waterlily and Cattail Sugar, Butter and Spooner with minor damage - m**
- ____43. Six Petals Tri-Corner Bowl - po
- ____44. Chrysanthemum Three Footed Bowl - b
- ____45. **Moonprint Butterdish - m**
- ____46. 6" Wishbone and Spades Plate - p
- ____47. Two Handled Flute Spooner - m
- ____48. Four Flowers Variant Bowl - green teal
- ____49. 10" Diamond Lace Bowl - clambroth
- ____50. Question Mark Compote - p
- ____51. Octagon Sugar, Creamer and Butterdish - m
- ____52. Hobstar and Cut Triangles Bowl - amyth
- ____53. **Dahlia Butterdish and Creamer - m**
- ____54. **Acorn Burrs Table Set - p, Outstanding**
- ____55. **Acorn Burrs Berry Set with 6 berry dishes - p, SUPER SET**
- ____56. **Acorn Burrs Punch Set with 6 cups - p, EXCELLENT**
- ____57. Two Row Open Edge Basket with Blackberry Pattern Interior - RED
- ____58. **Orange Tree Table Set, no lid for sugar - b**
- ____59. **Dahlia Spooner, Creamer and Sugar with lid and a Sugar without lid - p**
- ____60. **Moonprint Milk Pitcher - m**
- ____61. **Panel Berry Set with 5 berry dishes - m**
- ____62. Grape and Cable Two Handle Nappy - p
- ____63. Grape and Cable Three Footed Bowl - g
- ____64. Grape and Cable Large Berry Bowl - p
- ____65. **Grape and Cable Table Set - p**
- ____66. Grape and Cable Spooner - g
- ____67. **Grape and Cable Sweetmeat - p**
- ____68. 7" Grape and Cable Bowl - m
- ____69. 9" x 9" **Grape and Cable Compote - p**
- ____70. Grape and Cable Three Footed Bowl - p, Very Nice
- ____71. Grape and Cable Banana Boat - p
- ____72. **Grape and Cable Humidor, extra nice - p**
- ____73. Grape and Cable Wine Decanter - p
- ____74. 10" Persian Garden Ruffled Bowl - m
- ____75. Imperial Grape Vinegar - m
- ____76. Six Sided **Candlestick** - m, rich
- ____77. Imperial Grape Water Carafe - m
- ____78. Imperial Grape Water Carafe - p
- ____79. Imperial Grape Water Carafe - p
- ____80. Imperial Grape Water Carafe - p
- ____81. Imperial Grape Water Carafe - p
- ____82. Imperial Grape Water Carafe - p
- ____83. Imperial Grape Water Carafe - p
- ____84. Harvest and Grape Decanter, wrong stopper - m
- ____85. Blackberry Water Carafe - p
- ____86. Blackberry Water Carafe - p
- ____87. **Grape and Cable Covered Compote - p**
- ____88. 10" Rustic Vase - p
- ____89. Lustre Rose Three Footed Bowl - p
- ____90. Heavy Grape Bowl - m, rich
- ____91. 9" Ripple Vase - p
- ____92. 6" Heavy Grape Bowl - p
- ____93. Canada Dry Bottle - m
- ____94. Panther Berry Dish - m
- ____95. 7" Apple Twig Plate - w
- ____96. 6" Persian Medallion Plate - m
- ____97. 6" Four Flowers Plate - po
- ____98. Dragon and Lotus Footed Bowl - m
- ____99. Orange Tree Four Footed Bowl - m
- ____100. 10" Heavy Grape Bowl - smoke
- ____101. 9" Heavy Grape Bowl - m
- ____102. **Sunflower Water Set - p, SUPER**
- ____103. **Oriental Poppy Water Pitcher and Five Tumblers - p**
- ____104. **Grapevine Lattice Water Set - p**

- _____105. **Grape and Cable Water Set - p**
- _____106. **Grape and Cable Tankard and Tumbler - p**
- _____107. **Acorn Burr Water Set - p, Super Iridescence**
- _____108. Floral and Grape Water Set - p
- _____109. Diamond and Thumbprint Water Set - g
- _____110. Panel Water Set - p
- _____111. **Beaded Shell Water Set, chip on pitcher - p**
- _____112. Panel Water Set - p
- _____113. Blackberry Block Water Set - b
- _____114. Grape and Lattice Water Set - b
- _____115. **Heavy Iris Water Pitcher and Five Tumblers - p**
- _____116. Concave Diamonds Water Set - ib
- _____117. Diamond Lace Water Pitcher and Five Tumblers - p
- _____118. Octagon Water Pitcher and Two Tumblers - p
- _____119. N Peach Water Set - b
- _____120. Imperial Grape Water Pitcher and Five Tumblers - g
- _____121. **Dahlia Water Set - amyth**
- _____122. Imperial Grape Water Pitcher and One Tumbler - p
- _____123. Fashion Water Pitcher - p
- _____124. Fashion Water Pitcher and Three Tumblers - m
- _____125. **Dahlia Water Pitcher, chip on foot - m**
- _____126. Octagon Water Set - m
- _____127. Field Flower Water Pitcher - p
- _____128. Imperial Grape Water Set - m
- _____129. **Oriental Poppy Water Pitcher and One Tumbler - g**
- _____130. Tiger Lily Water Pitcher and Two Tumblers - p
- _____131. **Heavy Iris Water Pitcher - m**
- _____132. 474 Milk Pitcher - g
- _____133. Ten Mums Water Pitcher - b
- _____134. Grape Arbor Water Set - m
- _____135. **Inverted Thistle Water Pitcher and One Tumbler - p**
- _____136. Singing Bird Tumbler - p
- _____137. **Singing Bird Mug - b**
- _____138. Wishbone Tumbler - p
- _____139. **Dandelion Mug - Aqua Opal, Beautiful**
- _____140. **God and Home Tumbler - b**
- _____141. **PANEL Four Flower Epergne - b**
- _____142. **Poppy Show Vase - m**
- _____143. **Poppy Show Vase - p**
- _____144. **CHRISTMAS COMPOTE, EXCELLENT - M**
- _____145. **6" Acorn Bowl - RED**
- _____146. **Corn Vase, good color - m**
- _____147. Grape and Cable Hatpin Holder, **Super Iridescence - p**
- _____148. Butterfly and Berry **Table Set - m**
- _____149. Daisy and Drape Footed Vase - **Aqua Opal**
- _____150. **Seacoast Pin Tray - p**
- _____151. **7" Formal Vase - p**
- _____152. **Bushel Basket - Aqua Opal**
- _____153. **Two Row Open Edge Basket Weave Bon Bon - RED**
- _____154. Rays and Ribbon Bowl - m
- _____155. **Waterlily and Cattail Whimsey - m**
- _____156. Pansy Relish - m
- _____157. 10" Ripple Vase - p
- _____158. Bull's Eye and Leaves Bowl - g
- _____159. Leaf and Beads Footed Rosebowl - b
- _____160. **Hobstar and Fruit Turned up Plate, RARE - Butterscotch**
- _____161. 3" Diamond and Fan Compote - po
- _____162. **2 Leaf and Beads Rosebowls, damaged - one aqua opal the other one smoke**
- _____163. Four Aqua Vases
- _____164. 10" Button and Daisy Vase - m
- _____165. Nippon Ruffled Edge Plate - ice blue
- _____166. Heavy Grape Chop Plate - amber
- _____167. Holly Two Handled Candy Dish - g
- _____168. Wide Panel Flared Vase - p
- _____169. Octagon Pedestal Vase - m

- _____170. **6" Stippled Rays Candy Dish - RED**
- _____171. Jeweled Heart Ruffled Bowl - po
- _____172. Sunflower Footed Bowl - amyth
- _____173. Four Flowers Fluted Bowl - p
- _____174. Pair Footed Prism Panels Vases - m
- _____175. Wishbone and Spades Bowl - po
- _____176. Ski Star Fluted Bowl - po
- _____177. Stag and Holly Large Footed Bowl - m
- _____178. Beaded Jewel Folded Compote - opalescent
- _____179. Fanciful Stippled Plate - po
- _____180. Imperial Ruffled Bowl - p
- _____181. Holly Fluted Bowl - w
- _____182. **Good Luck Bowl, CRE - b**
- _____183. Pansy Bowl -p
- _____184. Three Fruits Bowl - p
- _____185. **Good Luck** Fluted Edge Bowl - b
- _____186. Hobstar and Arches Bowl - m
- _____187. Petal and Fan Ruffled Bowl - po
- _____188. **Peacock on the Fence** Fluted Bowl - b
- _____189. Nippon Bowl, CRE - g
- _____190. Petal and Fan Crimped Bowl - clambroth
- _____191. Six Petals Tri-Corner Bowl - "black"
- _____192. Rays and Ribbons Ribbed Bowl - m
- _____193. 7" Leaf Chain and Berry Circle Plate - m
- _____194. **Millersburg** Holly Bowl - p
- _____195. **Good Luck** Ruffled Bowl, Super Iridescence - p
- _____196. Holly Bowl, CRE - b
- _____197. Millersburg Rays and Ribbons Bowl - p
- _____198. Millersburg Whirling Leaves Bowl - amyth
- _____199. Wishbone Ruffled Bowl - p
- _____200. 11" Persian Garden Bowl - p
- _____201. **Poppy Show Bowl - Ice Blue**
- _____202. Peacock at Urn Ice Cream Bowl - p
- _____203. **Rose Show Bowl - moonstone - SUPER**
- _____204. Embroidered Mums Bowl - b
- _____205. Greek Key Bowl - amyth
- _____206. Embroidered Mums Bowl - b
- _____207. **Rose Show Bowl - b**
- _____208. Cobblestone Bowl - p
- _____209. **Millersburg Whirling Leaves** Tri-Corner Bowl - g
- _____210. Seaweed Bowl - amyth
- _____211. 11" Persian Garden Bowl - po
- _____212. **Rose Show Bowl - g**
- _____213. Embroidered Mums Bowl - b
- _____214. **Good Luck Plate - b**
- _____215. Star of David Bowl - p
- _____216. Rose Show Variant Bowl - b
- _____217. Jeweled Heart Bowl - po
- _____218. **Rose Show Bowl - Aqua Opal**
- _____219. Three Fruits Stippled Plate - amyth
- _____220. 7" Peacock Tail Bowl - amyth
- _____221. Four Flowers **Chop Plate - m**
- _____222. Grape and Cable Bowl - p
- _____223. **Nu-Art** Chop Plate, chip - amyth
- _____224. Heavy Grape **Chop Plate - m**
- _____225. Heavy Grape **Chop Plate - p**
- _____226. Dragon and Berry Bowl - b
- _____227. Concord Bowl - g
- _____228. 7" Lustre Rose Bowl - m
- _____229. **Poppy Show Plate, Great Color - m**
- _____230. Holly Bowl - m
- _____231. Scales Plate - po
- _____232. Single Flower Framed Footed Tri-Corner Bowl - p
- _____233. Three Fruits Stippled Plate - b
- _____234. Open Rose Plate - amber
- _____235. Concord Bowl - g
- _____236. **Rose Show Plate - w**
- _____237. Grape and Cable Bowl - m
- _____238. Poinsettia Three Footed Bowl - m
- _____239. **Three Fruits Stippled Plate - p**
- _____240. Hearts and Flowers Stippled Plate - amyth
- _____241. Three Fruits Plate - m
- _____242. **Rose Show Plate - p**

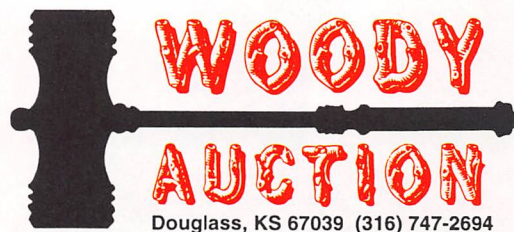
- _____243. Ribbon Tie Plate, CRE - b
- _____244. **12" Stag and Holly Footed Plate - m**
- _____245. **Orange Tree Bowl - RED**
- _____246. Grape and Cable Stippled Bowl - b
- _____247. Greek Key Stippled Bowl - amyth
- _____248. Stippled Rays Tri-Corner Bowl - g
- _____249. Fleur De Lis Bowl - m
- _____250. Grape Leaves Bowl - amyth
- _____251. Grape and Cable Ruffled Bowl - g
- _____252. **Millersburg Grape Wreath Bowl,**
CRE - amyth
- _____253. **Rose Show Plate - m**
- _____254. Captive Rose Plate - b
- _____255. Imperial Grape Plate - p
- _____256. **Poppy Show Plate - Ice Green**
- _____257. Grape and Cable Bowl - g
- _____258. Three Fruits Stippled Plate - amyth
- _____259. **Strawberry Stippled Plate - p**
- _____260. Holly Bowl - po
- _____261. 7" Fish Scale and Beads Plate - m
- _____262. **Poppy Show Plate - g**
- _____263. 8" Imperial Grape Plate - g
- _____264. Embossed Scroll Stippled Plate - p
- _____265. Apple Blossom Twig Stippled
Plate - p
- _____266. Pansy Bowl - p
- _____267. **Peacock on the Fence Stippled Bowl -**
Aqua Opal
- _____268. **Good Luck Stippled Bowl - teal**
- _____269. **Rose Show Plate - Ice Green**
- _____270. Round Up Plate - b
- _____271. Three Fruits Stippled Plate - amber
- _____272. Wishbone Footed Plate - amyth
- _____273. **Three Fruits Bowl - Aqua Opal**
- _____274. 12" Persian Garden Bowl - m
- _____275. **Peacock on the Fence Ruffled**
Bowl - b
- _____276. **Poppy Show Plate - electric blue**
- _____277. Fanciful Plate - b
- _____278. **Three Fruits Stippled Plate - electric**
blue
- _____279. Concord Plate - g
- _____280. 8" Imperial Grape Plate
- _____281. Lotus and Poinsettia Three Footed
Bowl - g
- _____282. **Peacock and Grape Three Footed**
Bowl - **RED**
- _____283. Shells Plate - g
- _____284. 7" Smooth Rays Bowl - p
- _____285. **Peacock on the Fence Plate - b**
- _____286. Three Fruits Plate - b
- _____287. Lotus and Grape Plate - amyth
- _____288. Shells Bowl - amyth
- _____289. Little Fishes Three Footed Bowl - b
- _____290. Hearts and Flowers Bowl - ice blue
- _____291. **Rose Show Bowl - g**
- _____292. **Grape and Cable Plate - p**
- _____293. Coin Dot Plate - amyth
- _____294. Grape and Cable Plate - g
- _____295. **7" Leaf Chain Bowl - RED**
- _____296. **Peacock on the Fence Plate - b**
- _____297. **Good Luck Plate - amyth**
- _____298. Round Up Plate - m
- _____299. Leaf and Chain Plate - b
- _____300. Captive Rose Plate - b
- _____301. Hattie Chop Plate - p
- _____302. Wishbone and Spades **Chop Plate -**
amyth
- _____303. **Peacock on the Fence Plate - amyth**
- _____304. Round Up Ruffled Plate - p
- _____305. Strawberry Stippled Plate - amyth
- _____306. **Rose Show Plate - b**
- _____307. Four Flowers Variant Plate - p
- _____308. Holly Plate - b
- _____309. Orange Tree Plate - b
- _____310. Holly Plate - b
- _____311. **Sunflower Footed Bowl - b**
- _____312. **Three Fruits Footed Bowl - Aqua**
Opal
- _____313. Horses Heads Three Footed Whimsey
Bowl - m
- _____314. Ski Star Hand Grip Plate - po
- _____315. **Inverted Strawberry Candlestick - g**

- _____316. Flowers and Frames Pedestal Bowl - p
- _____317. **22" Tree Trunk Vase** - amyth
- _____318. 11" Beaded Bull's Eye Vase - amyth
- _____319. 11" Fine Ribbed Vase - p
- _____320. 10" Diamond Point Vase - teal
- _____321. Canthus Panels Plate - m
- _____322. Panel Creamer and Sugar - p
- _____323. Panel Toothpick Holder - p
- _____324. **Inverted Thistle Two Handled Spooner** - amyth
- _____325. **Imperial Grape Wine Decanter and Six Glasses**
- _____326. Jack in the Pulpit Vase - teal
- _____327. Jack in the Pulpit Vase - m
- _____328. Heavy Grape Punch Bowl and Cup - g
- _____329. 8" Imperial Grape Plate - p
- _____330. Two Rococo Vases - smoke
- _____331. Pair of Colonial Lady Vases - p
- _____332. Lustre Rose Tumbler - p
- _____333. Beaded Star Plate - m
- _____334. Two Scales Plate and Bowl - po
- _____335. **Stork and Rushes Punch Bowl and Six Cups** - m
- _____336. Three Marigold Misc. Bowls
- _____337. Rain Drop Compote - m
- _____338. Two Cherry Footed Compote - m
- _____339. Octagon Wine Decanter - m
- _____340. Two Covered Swans - m, amyth
- _____341. **Covered Hen and Chicks** - m
- _____342. Sailboat Dish - m
- _____343. Grape Leaves Bowl - amyth
- _____344. Vaseline Ribbed Compote
- _____345. Cherries Footed Bowl - amyth
- _____346. 5" Boggy Bayou Vase - multi-color
- _____347. 15pcs of Contemporary Souvenir Pieces (sell separately)
- _____348. Octagon Celery - m
- _____349. **Orange Tree Loving Cup** - m
- _____350. 17" Vase - p
- _____351. 9" Vase - po

CARNIVAL GLASS AUCTION

Saturday, March 25, 1995 ♦ 9:30 a.m.

Harley Hotel
1-70 at Earth City Exit #231-B
St. Louis, Missouri





FIRST CLASS MAIL



ADDRESS CORRECTION REQUESTED

