

TEXAS AUCTION

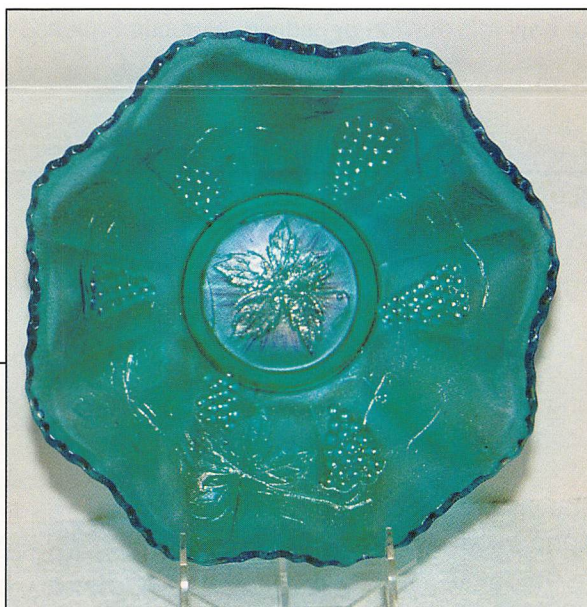
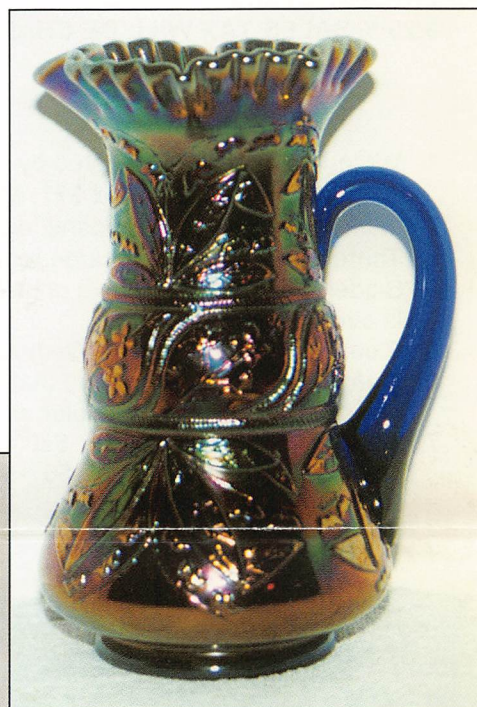
CARNIVAL GLASS
CLUB CONVENTION

Saturday, February 18, 1995

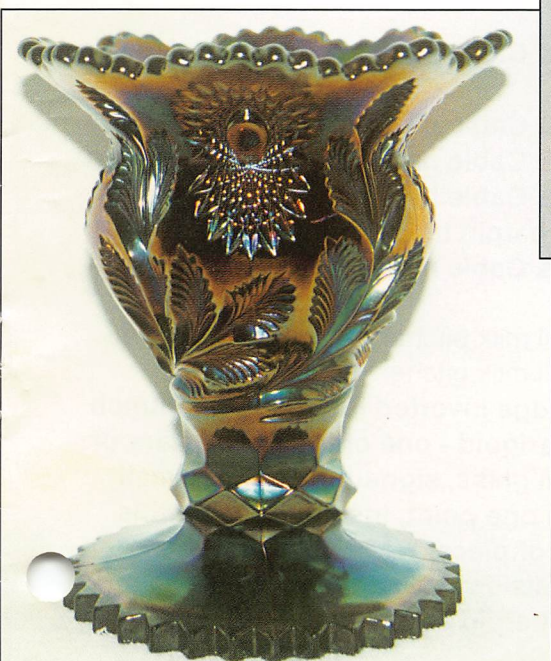
9:30 AM

Marriott Hotel Greenspoint, Houston, Texas

**(713) 875-4000
for reservations**



**Vern and Suzie White
Collection and Others**



Seeck Auctions
JIM & JAN SEECK 515-424-1116
VERN & SUZIE WHITE 515-748-2923

SATURDAY, FEBRUARY 18, 1995 - 9:30 A.M.
Marriott Hotel at Greenspoint -- Houston, Texas
Vern and Suzie White Collection and Others

What better place to sell my partner's, LaVern and Suzie White's, carnival glass collection and some super rarities from the Don and Connie Moore collection than Texas. The Texas Convention has slowly become one of the larger conventions. Maybe because of the Texas hospitality or maybe 'cause it's warm in Houston in February? No matter what, the glass in this auction is fantastic which gives us all the more reason to migrate to Houston for a sizzling hot February weekend.

Texas Carnival Glass Club Convention Information: Contact President Roy Hieger at (903) 581-2395.

Preview: Saturday, February 18th 8:00 a.m.

8.25 % SALES TAX WILL BE CHARGED -- Please bring your resale tax number with you.

WRITE-IN BID POLICY

1. Write-in bids will be accepted by sending the numbers of the item(s) desired and the amount bid on each to:
Seeck Auctions, PO Box 377, Mason City, Iowa 50402. (This is a change since we are selling the White's collection.)
2. If known by Auction Company, bids may be done over the telephone. (515)424-1116.
3. There is a \$5 handling charge for each successful bid. Shipping and insurance charges are additional.
4. Bidders will be notified by a phone call if their bid(s) are successful. This call will be made 1 - 3 days after the auction is over.
5. Please have all bids in by Wednesday, February 8th. All bids (by mail or phone) after this date will not be carried out.
6. If you do not receive an item that sold for less than your bid, assume we cancelled your bid because the piece of glass had below average color, manufacture problem, damage or was not listed correctly.
7. To receive price lists send: \$20 -- for this auction and next 7 auctions
\$5 -- for only this auction or individual auction (please specify)

Send to the above address.

- 1. Strawberry bon bon - marigold
- 2. Scroll Embossed ruffled compote - purple - spectacular irid.
- 3. Two Flowers spt ftd rosebowl - marigold
- 4. Lotus & Thistle 7" IC shaped bowl - marigold
- 5. Persian Garden 6" plate - marigold
- 6. Rustic 11" vase - green
- 7. Tree Trunk 10" vase - amethyst
- 8. Holly ruffled compote - marigold
- 9. Wide Panel Var. tankard water pitcher - marigold
- 850 10. Grape & Cable perfume - purple - spectacular example, the best one we've ever sold, the rest of this set is as good as we've ever had.
- 350 11. Grape & Cable cologne bottles (2) - purple - choice - super
- 300 12. Grape & Cable dresser tray - purple - also super!

- 325 13. Grape & Cable pin tray - purple - also very nice!
- 14. Grape & Cable powder jar - purple
- 15. Grape & Cable nappy - purple
- 450 16. Grape & Cable hatpin holder - purple - a dandy, hatpin holders are hot!
- 375 17. Grape & Cable hatpin holder - marigold - nice!
- 18. Windmill milk pitcher - marigold
- 19. Windmill milk pitcher - green
- 400 20. Cambridge Inverted Feather 8 pc. punch set - marigold - one of the super stars of carnival glass, signed Near Cut, small nick on one point, insignificant on this caliber of piece, RARE, RARE!
- 21. Two Fruits divided bon bon - blue
- 900 22. Spider hatpin - dark - a super RARE hatpin!
- 150 23. Dimples & Brilliance hatpin - dark

- 80, 65 24. Top of the Morning hatpin (2) - dark - choice
 65 25. Top of the Morning var. hatpin - dark
 500 26. Leaf Chain 9" plate - marigold - fantastic irid., a great Fenton plate!
 900 27. Singing Birds 7 pc. water set - green - outstanding color & irid., a super set
 28. Dragon & Lotus ruffled bowl - green - a nice example
 29. Lined Lattice 9 1/2" vase - purple - pretty
 30. Lined Lattice 9 1/2" vase - white
 31. Iris Buttermilk goblet - green
 32. Iris Buttermilk goblet - amethyst
 33. Iris Buttermilk goblet - marigold
 34. Garden Path Var. 6" round sauce - peach opal
 1000 35. N's Stippled Peacock at Urn master IC bowl - ginger ale - super pink & blue irid., an outstanding piece.
 1250 36. N's Peacock at Urn master IC bowl - ice blue - extremely rare & desirable
 500 37. N's Peacock at Urn master IC bowl - amethyst - always desirable
 350 38. N's Peacock at Urn master IC bowl - marigold - a nice one!
 39. Fashion 8 pc. punch set - marigold
 40. Imperial Grape 6 pc. wine set - marigold - a nice set
 550 41. Beaded Cable rosebowl - ice blue - extremely rare & desirable
 400 42. Beaded Cable rosebowl - white - nice & very scarce
 43. Beaded Cable rosebowl - amethyst - very nice
 44. Beaded Cable rosebowl - marigold - nice & dark
 45. Horse Medallion rosebowl - marigold - nice
 3100 46. Good Luck 9" plate w/ribbed back - emerald green - super blue irid., a little deep, an extremely rare piece of glass
 47. Ripple 12" vase - purple - pretty - 3 1/4" vase
 350 48. Pastel Swan - peach opal - lots of opal, a super nice one!
 49. Pastel Swan - pink
 50. Pastel Swan - green opal - not irid.
 51. Pastel Swan - amber - not irid.
 1200 52. Cosmos & Cane tankard water pitcher - white - super rare, very pretty & frosty
 900 53. Strawberry hatpin - green - extremely rare, a top notch hatpin
 1100 54. Strawberry hatpin - amber - also extremely rare
 500 55. Dragonflies hatpin (2) - dark - choice
 45 56. Dragonflies var. hatpin - dark,
 57. Iris ruffled compote - blue - scarce color & pretty
 1700 58. E.A. Hudson Furniture Co. advertising plate - amethyst - outstanding blue irid. on this rare plate, this is from Houston, Texas
 500 59. Concave Diamond 14 pc. water set - celest blue - includes lid, tumblers, coasters, hard set to find complete
 400 60. Peacocks ruffled bowl - ice green - much more rare than the plate, nice
 775 61. Peacocks ruffled bowl - aqua opal - butterscotch irid., in high demand
 550 62. Peacocks ruffled bowl - blue - super
 450 63. Peacocks ruffled bowl - marigold - spectacular
 64. Miniature Morning Glory 5" vase - purple - pretty
 65. Miniature Morning Glory 5" vase - smoke - nice
 66. Miniature Morning Glory 5" vase - marigold
 550 67. M'burg Diamonds 7 pc. water set - green - a very nice, scarce set
 550 68. Hearts & Flowers ruffled compote - aqua opal
 69. Butterfly & Berry 8" vase - blue
 70. Lattice & Daisy 7 1/2" vase - purple - very pretty
 71. Grape Arbor 7 pc. water set - marigold
 300 72. N's Bushel Basket - green - very rare color
 200 73. N's Bushel Basket - ice green
 74. N's Bushel Basket - blue
 75. N's Bushel Basket - purple
 4250 76. Vintage 10" ruffled bowl - celest blue - only ruffled one I know of, super pretty, WOW!
 77. Optic & Button rosebowl - marigold
 1000 78. True Scarab hatpin - dark
 45 79. Moire Beetle hatpin - dark
 40, 35 80. Six Plums hatpins (2) - dark - choice
 55 81. Six Plums var. hatpin - dark
 82. Persian Medallion bon bon - aqua - pinpoint on edge
 83. Persian Medallion bon bon - blue
 84. Persian Medallion bon bon - marigold
 85. Diamond & Sunburst 6 pc. wine set - marigold
 575 86. Grape & Cable punch bowl & base - purple, very nice
 87. Fenton's Flowers rosebowl - lavender or ice purple - only one I've seen, damage on feet

- 850 88. Panelled Dandelion 7 pc. tankard water set - green - a very pretty and scarce set!
89. Leaf & Beads rosebowl - amethyst - pretty
90. Leaf & Beads rosebowl - marigold - super dark
- 325 91. Round Up ruffled plate - peach opal - super!
92. Round Up ruffled bowl - white - pretty
93. Round Up ruffled bowl - marigold
- 400 94. M'burg Hobstar & Feather giant WHIMSEY SPITTOON - purple - only one known - a great, great piece of glass! Super pretty, a true rarity!
95. Holly 9" plate - marigold - super dark, as nice as they get
96. Fine Rib 10" vase - aqua
97. Fine Rib 10" vase - lime green
98. Fine Rib 10" vase - marigold
99. Orange Tree hatpin holder - blue - minor nick on one foot
- 700 100. Suzie's miniature glass Cow 1 3/4" high, 2 1/4" long - marigold - a cute, rare miniature
101. Fenton duck - blue - new
102. Ranger perfume - marigold - pretty
103. Ranger cvd jar - marigold - pretty
104. Ranger pin dish - marigold
- 325 105. Sun's Up hatpin - lavender
- 205 106. Flying Bat hatpin - dark
- 70 107. Tufted Throw Pillow hatpin - dark
- 50 108. Butler's Mirror hatpin - dark
109. Carnival beaded necklace
- 300 110. Stippled Three Fruits 9" plate w/ribbed back - purple - very scarce
111. Stippled Three Fruits 9" plate w/ribbed back - marigold - scarce
- 450 112. Garden Mums 6" plate - amethyst - extremely rare plate, this is the blank of most advertising pieces
- 160 113. Holly ruffled compote - black amethyst - rare color
114. Holly ruffled compote - green - tough color
115. Holly ruffled compote - blue
116. Holly ruffled compote - marigold
- 450 117. M'burg Hobstar & Feather 10 pc. punch set w/Fleur Di Lis interior - marigold - minor pinpoint on edge, very rare w/this interior
118. Holly 3 in 1 edge bowl - lime green - extremely rare color
119. Holly 3 in 1 edge bowl - green
120. Holly 3 in 1 edge bowls (2) - blue - choice
- 1600 121. Fenton's Peacock at Urn ruffled bowl - persian blue - extremely rare color, an

- oustanding piece of glass
- 275 122. Fenton's Peacock at Urn ruffled bowl - olive green - very rare color & pretty!
- 425 123. Butterfly & Fern water pitcher - blue - the tough color
124. Butterfly & Fern tumblers (2) - blue - choice
125. Butterfly & Fern water pitcher - marigold
126. Butterfly & Fern tumblers (2) - marigold - choice
127. Knotted Beads 9 1/2" vase - blue - nice
- 625 128. Horse Medallion collar base ruffled bowl - amethyst - super pretty with great mold work, RARE
- 625 129. Horse Medallion collar base ruffled bowl - marigold
- 525 130. Peacock at the Fountain master berry bowl - ice blue - very rare
- 2100 131. Owl hatpin - marigold - extremely rare
- 350 132. Tiny Owl hatpin - dark - silver irid.
- 350 133. Egyptian Butterfly hatpins (2) - dark - choice
- 350 134. Triad hatpins (2) - dark - choice
135. Pastel Swan - amethyst - nice
136. Pastel Swan - ice green
137. Pastel Swan - blue opal - not irid.
138. Pastel Swan - pastel blue - not irid.
- 1600 139. Butterfly & Tulip square ftd bowl - purple - outstanding example, small manufacture flaw
140. Imperial Grape 10" ruffled bowl - purple - electric blue irid., super!
- 600 141. Stippled Peacocks 9" plate w/ribbed back - blue - extremely rare plate
- 475 142. Peacocks 9" plate w/ribbed back - ice green
143. Target 12" vase - peach opal - opal from top to bottom, pretty
144. Nippon PCE bowl w/BW back - white
145. Fine Cut & Roses rosebowl - green
146. Fine Cut & Roses rosebowl - marigold
147. Fine Cut & Roses rosebowl - amethyst
148. Fine Cut & Roses rosebowl - lavender - has no collar base
149. Fishscale & Beades 6" ruffled bowl - peach opal - lots of opal
- 675 150. Blackberry Open Edge 2 sides up 7" bowl - red - super pretty! rare!
- 650 151. Stippled Three Fruits ruffled bowl w/ribbed back - lavender - pretty & rare
- 350 152. Stippled Three Fruits ruffled bowl w/ribbed back - white - pretty & rare
153. Imperial Grape water carafe - purple - fantastic irid.!
154. Grape & Cable ruffled hat shape - purple - made from tumbler

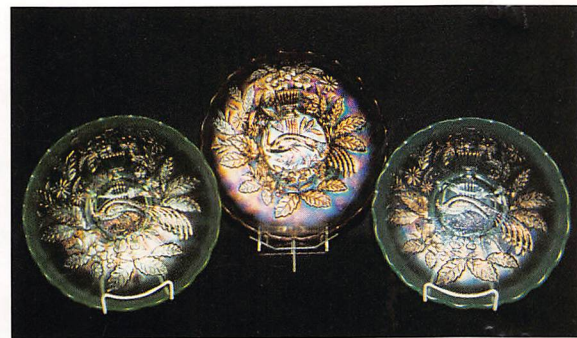
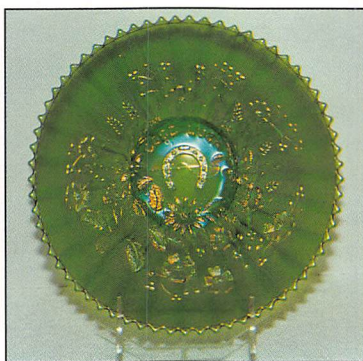
- 1050 155. Central Shoe Store advertising handgrip plate - amethyst - super irid. and very rare!
156. Fashion water pitcher - marigold - neat shape
157. Fashion tumblers (2) - marigold - choice
- 1000 158. Stippled Three Fruits ruffled collar base bowl - aqua opal - extremely rare & desirable
- 750 159. Captive Rose 9" plate - green - a rare plate
160. Captive Rose 3 in 1 edge ruffled bowl - green - nice
161. Captive Rose 3 in 1 edge ruffled bowl - nice
162. Captive Rose 3 in 1 edge ruffled bowl - blue
163. Kittens 2 sides up dish - marigold
164. Thin Rib & Drape miniature 4 3/4" vase - marigold - nice dark color & irid.
165. Stippled Grape & Cable PCE bowl - blue - outstanding irid., has crack in base
166. Stippled Grape & Cable PCE bowl - marigold - pastel looking
- 1200 167. Scarab Shell hatpin - blue - rare & desirable
- 500 168. Ferris Wheel hatpin - dark - rare
169. Circled Basketweave hatpin - dark
170. Coolie Hat hatpin - dark
- 2000 171. Stippled Grape & Cable 9" plate - sapphire - a highly sought after plate, a collector's favorite
- 475 172. M'burg Nesting Swan ruffled bowl - green - satin
- 450 173. M'burg Nesting Swan ruffled bowl - amethyst - radium
- 150 174. M'burg Nesting Swan ruffled bowl - marigold - satin
175. Soda Gold tumbler - smoke
176. Interior Poinsettia tumbler - marigold
177. Wreathed Cherry water pitcher - purple
- 1050 178. Fern Brand Chocolates advertising 6" plate - amethyst - super pretty example, scarce!
179. Pastel Swan - vaseline - very scarce color
180. Pastel Swan - celest blue
181. Pastel Swan - white opal - not irid.
182. Pastel Swan - blue, cranberry - choice, not old
- 2300 183. Stippled Good Luck ruffled bowl - reninger blue - a very pretty example for this bowl
- 475 184. Stippled Good Luck ruffled bowl - blue - outstanding color & irid.
185. Stippled Good Luck ruffled bowl - blue - has a different look, blue irid. on outside, silver on inside
186. Orange Tree 9" plate - clambroth
187. Heisey signed indiv. set, creamer & sugar tray - light blue
188. Heisey signed indiv. set, creamer & sugar tray - light marigold
- 425 189. M'burg Peacock at Urn 10" ruffled bowl - green - satin & super pretty
190. M'burg Peacock at Urn 10" ruffled bowl - marigold - satin
191. Hobnail Var./Rustic 12" midsize vase - marigold - some people consider this M'burg, I consider it Fenton
192. Four-Seventy-Four milk pitcher - green
193. Four-Seventy-Four milk pitcher - marigold
- 450 194. N's Peacock at Urn IC sauce - ice green - a fantastic one
- 350 195. N's Peacock at Urn IC sauce - ice blue - scarce
- 125 196. N's Peacock at Urn IC sauce - white - pretty
197. N's Peacock at Urn IC sauce - amethyst - great mold
198. N's Peacock at Urn IC sauce - marigold
199. N's Peacock at Urn IC sauce - blue - stippled
- 1300 200. Stippled Grape & Cable 10" ruffled bowl - blue - outstanding, as super as super as electric can get, a showstopper!
- 375 201. Belle hatpin - dark - rare & beautiful
- 500 201a. Marvelous hatpin - dark - pretty, has rhinestones
- 95 202. Oval Sphere hatpin - dark
203. Diamond Sphere hatpin - dark
- 85 204. Spiral Dance hatpin - dark
- 800 205. Connie tankard water pitcher - white w/enamled flowers - a rare pitcher
206. Connie tumblers (5) - white w/enamled flowers - choice, rare
- 575 207. Peacocks PCE bowl - purple - very pretty
- 375 208. Stippled Good Luck PCE bowl - blue
- 400 209. Brazier's Candies handgrip advertising plate - amethyst - very scarce
210. Pidgeon Puffer - light marigold
211. Miniature Bird in Flight - light marigold - only one I have ever seen
212. Curved Star compote - marigold
213. Lions ruffled bowl - marigold - getting tougher
214. Peacock & Dahlia ruffled bowl - blue - pretty
- 250 215. Grape Arbor whimsey ruffled hatshape - ice green - extremely rare item, made

from the tumbler

216. Holly 3 in 1 edge bowl - vaseline
 217. Holly 3 in 1 edge bowl - amethyst
 218. Holly 3 in 1 edge bowl - marigold
 1000 **219. Star & Flower hatpin - blue - I have not seen another, pretty**
 75 **220. Veiling hatpin - dark - pretty**
 700 **221. Propeller hatpin - dark - pretty**
 155 **222. Bullet hatpin - dark**
223. Wisteria tankard water pitcher - white - has 1/2" hairline & epoxy spot on top edge, extremely rare pitcher, a great shelf piece
224. Beaded Cable rosebowl - aqua opal - nice example
 225. Beaded Cable rosebowl - green - a very pretty example, hard to find pretty in this color
 226. Beaded Cable rosebowl - blue opal - not carnival
 350 **227. Persian Medallion 9" plate - blue - a very scarce plate**
 228. Grape & Cable 9" plate w/BW back - purple
 229. Grape & Cable ruffled bowl w/BW back - purple
 350 **230. Stippled Three Fruits 9" plate - blue - a rare plate**
 400 **231. Peacock & Grape 9" ftd plate - green - quite rare**
 232. Strawberry PCE bowl w/BW back - green - pretty
 233. Australian Kingfisher ruffled sauce - marigold
 234. Holly JIP CRE hatshape - red - very rare shape
 525 **235. 1911 Atlantic City Elk's plate - blue - extremely rare & desirable, minor manufacture opening on base**
 236. Three Fruits PCE bowl w/BW back - amethyst
 237. Three Fruits PCE bowl w/BW back - marigold
 238. Diamond Points 10 1/2" vase - amethyst
 239. **Banded Berry Cluster hatpin - lavender - a very scarce pin**
 240. Concentric Circles hatpin - lavender
 241. Flower Arcs hatpin - dark - sometimes called Garden Path
 242. Squares & Triangles - dark - pretty
 400 **243. M'burg Fleur De Lis collar based 3 in 1 edge bowl - amethyst - fantastic radium irid., very scarce**
 244. N's Eight Sided Bushel Basket - white - chip on foot
 245. Diamond Lace water pitcher - purple - super pretty irid.
 246. Diamond Lace tumblers (3) - purple - choice
 247. **Fruits & Flowers bon bon - white - pretty yellow irid., nice piece**
 248. Fruits & Flowers bon bon - marigold - pretty
 249. Fruits & Flowers bon bon - purple
 1050 **250. Jockey Club advertising 6" plate - amethyst - extremely rare in a plate, has super pink irid.**
 251. Fenton's Peacock at Urn 9" plate - white - this is the very first piece of carnival glass Jim sold at auction.
 252. Three Fruits 9" plate w/BW back - purple
 253. Vintage 7" plate - green
 1000 **254. Peacocks ruffled bowl w/ribbed back - white - super example, a fantastic piece**
 1150 **255. Peacocks ruffled bowl w/ribbed back - green - as good as I've seen**
 500 **256. Peacocks ruffled bowl w/ribbed back - aqua w/opal tips - very pretty**
 257. Peacocks ruffled bowl w/ribbed back - purple - nice
 145 **258. Sunflower Basket hatpin - dark - pretty**
 450 **259. Bubbles hatpin - dark**
 325 **260. Hearts & Cross hatpin - dark - pretty**
 20 **261. Panama Hat hatpin - dark - epoxy on edge**
 400 **262. Utah Liquors Co. advertising plate - amethyst - chip on wide panel back, extremely rare plate**
 425 **263. Wishbone epergne - marigold - scarce color**
 264. Fenton's Grape & Cable 9" spt ftd plate - blue
 265. Scroll pin tray w/Chicago adv. - marigold
 266. Lotus & Grape ball ftd ruffled sauce - vaseline
 2600 **267. Stork hatpin - blue - extremely rare, only one I have seen, my favorite**
 175 **268. Waves hatpin - chocolate glass - also quite scarce**
 60 **269. Throw Pillow hatpin - dark**
 115 **270. Turbin hatpin - dark**
 700 **271. 1910 Detroit Elks ruffled bowl - amethyst - a very scarce bowl**
 272. Grape & Cable 9" plate w/plain back - purple - pretty
 273. Perfume w/atomizer - marigold
 274. Perfume w/atomizer signed DeVilbiss - marigold
 275. **N's Bushel Basket - aqua opal - always in demand**
 276. N's Bushel Basket - white - pretty
 277. N's Bushel Basket - blue opal - not carnival

278. N's Bushel Basket - lavender
900 279. Orange Tree loving cup - white - rare color!
 280. Good Luck ruffled bowl w/ribbed back - blue - nice
 281. Good Luck ruffled bowl w/ribbed back - marigold - super
 282. Hearts & Flowers ruffled bowl w/ribbed back - ice blue
 283. Hearts & Flowers ruffled bowl w/ribbed back - white - small flake on edge
950 284. N's Peacock at Urn master IC bowl - ice green - a super, super one
1100 285. N's Peacock at Urn master IC bowl - blue - very pretty, very rare
700 286. N's Peacock at Urn master IC bowl - white - nice
 287. Strawberry ruffled bowl w/BW back - marigold
600 288. Concord ruffled bowl - green - very pretty, a hot pattern
 289. Good Luck 9" plate w/BW back - green - has small chip on edge
 290. Open Rose 9" plate - amber - pretty
2100 291. Fuschia Basket hatpin - blue - very, very pretty, only one I've seen
50, 50, 35 292. Rooster hatpin (3) - lavender - choice
400 293. Rooster hatpin (2) - blue - choice
50 294. Rooster hatpin - amber
40 295. Rooster hatpin - white
165 296. Rooster hatpin - teal green
125 297. Rooster hatpin - red w/black paint
50 298. Rooster hatpin - blue w/black paint
 299. Buttermilk goblet - green
 300. Buttermilk goblet - amethyst
 301. Buttermilk goblet - marigold
6000 302. Lily of the Valley water pitcher - blue - a SUPER, SUPER DOOPER piece of carnival glass, my favorite of the auction, has FANTASTIC irid.
 303. Blackberry miniature compote - blue
 304. Grape Arbor tumbler - marigold
 305. Double Star tumbler - green
 306. Panelled Diamond & Bows 9 1/2" vase - blue
 307. Panelled Diamond & Bows 6" vase - marigold
 308. 1982 NCCC Convention Inverted Strawberry spittoon - lavender
 309. Daisy & Button shoe - purple - not old
 310. 1982 LLCGC Convention commemorative rosebowl - aqua opal
 311. 1978, 79, 80 ICGA Town Pumps
 312. 1971 St. Clair Wreathed Cherry tootpick - blue
 313. Depression Era juice glass - marigold
 314. 1994 HOACGA sov. mugs (2) - amber





Seeck Auctions

405 1st. St.
Grafton, Iowa 50440

