

BURNS

AUCTION SERVICE

Carnival Glass / Victorian Colored Pattern Glass Auction

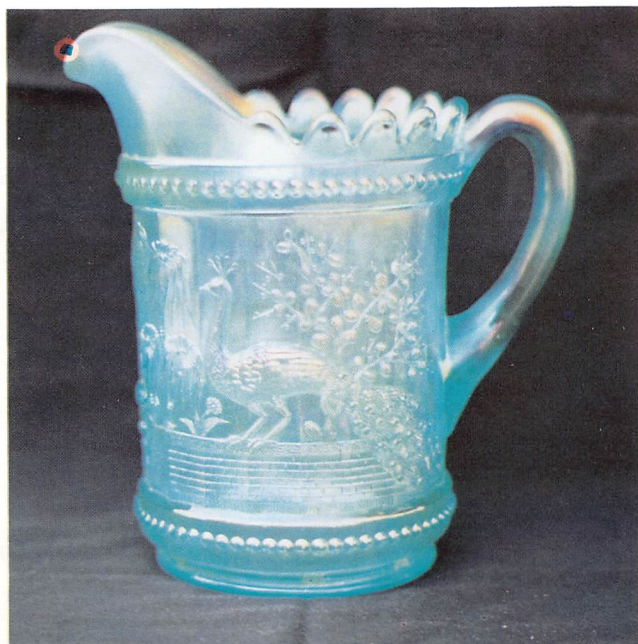
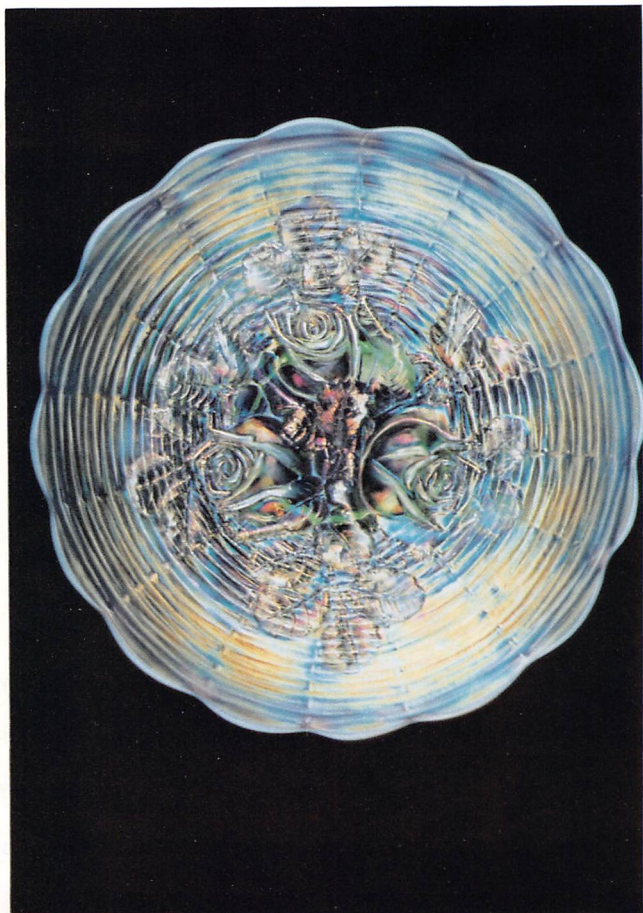
6:00 pm Friday, November 25, 1994
preview 4:00 pm, Lots 1-225

9:00 am Saturday, November 26, 1994
preview 8:00 am, Lots 226-end

at the Lenox Inn

I-70 & St. Rte. 256, Reynoldsburg, OH 43068
(just off I-70 from the east side of the Columbus bypass, I-270)

(614) 861-7800



Burns Auction Service

Tom Burns
109 E. Steuben St.
Bath, New York 14810
(607) 776-7942

Bill Richards
44 Water St.
Poland, Ohio 44514
(216) 757-2001

Bill Richards III
524 Poland Ave.
Struthers, Ohio 44471
(216) 755-2620

Licensed and Bonded by the Dept. of Commerce in favor of the State of Ohio

Happy Turkey Day! At this auction we'll be selling the collection of Marcella Lourd from New York City and Connecticut. Marcella and her husband went to shops and flea markets 20 - 30 years ago and bought what they liked - the results are favorable and we present to you this great selection, being sold to the highest bidder with out reserve. This will most likely be our last auction of 1994 (maybe!) so spend Thanksgiving with your family and come out to the Columbus area for this event and the monthly Scott Antique Show!. . . you won't be sorry!

The Lenox Inn will host the event. The facilities are located just off I-70, east of the I-270 bypass around Columbus. You may make your reservations by calling the motel direct at (614) 861-7800 and be sure to mention Burns Auction Service.

Mail Bids due by Wednesday, November 23, 1994

Mail Bids honored under the following conditions:

1. No deposit required. Bidders will take full responsibility to honor any and all bids we execute for them. Payment in full plus postage and handling required after notification and before we ship any item to them.
2. **Items are bid on in perfect condition with average or above average iridescence OR as listed in the brochures. Bids will not be carried out when damage on an item has been found during the auction.**
3. Successful bidders will be notified by collect call from the auctioneer **(so be sure to include phone number).**
4. Phone inquiries about the glass or any other questions are welcome.
5. All non-successful bidders will receive a result summary in the mail. Results of all bids will be provided.
6. If you have some other person at the auction bidding for you, they must pay for the item before taking it.
7. Mail bids due by Wednesday, November 23, 1994.

- | | | | |
|-------------------|--|-----------------|---|
| ___ 1. | Westmoreland Pastel Jack in the Pulpit Hat - Pink / Grey Flash | ___ 21. | N G & C Flared Handled Punch Cup Whimsey Nappy - Mari. (scarce) |
| ___ 2. | DeVilbiss Stemmed Atomizer - Mari. | ___ 22. | N G & C Stippled Handled Punch Cup - Elec. Blue (absolutely super irid.) |
| ___ 3. | Pastel Swan - Ice Green (small flake on wing edge) | ___ 23. | N G & C Handled Bon Bon with Basketweave Exterior - Elec. Blue (very desirable; super irid.) |
| ___ 4. | Pastel Swan - Pink (nice color) | ___ 24. | N G & C Handled Bon Bon with Basketweave Exterior - Pur. (great color and irid.; elec. blue irid.) |
| <u>20</u> 5. | PASTEL SWAN - PUR. (VERY SCARCE AND DESIRABLE; NICE COLOR AND IRID.) | <u>500</u> 25. | N G & C 6 PC. SMALL SIZE PUNCH SET - PUR. (THE BOWL HAS SUPER COLOR AND MULTI-COLORED IRID.) |
| ___ 6. | Odd Small Figural Swan Salt - Lt. Blue (not much irid.) | ___ 26. | N G & C Punch Base Only - Pur. |
| ___ 7. | N Grape Leaves Ruffled Bowl - Pur. | ___ 27. | N G & C Covered Sweetmeat Compote - Pur. (very scarce; has super color and irid.) |
| ___ 8. | (2) N Star of David Deep Ruffled Bowls with Vintage Exterior - Pur. (selling choice) | ___ 28. | N G & C Punch Cup - Green (scarce) |
| ___ 9. | N Sunflower ftd. Ruffled Bowl with Meander Exterior - Mari. | ___ 29. | (2) N G & C Individual Berry Bowls - 1-Pur., 1-Green (selling choice) |
| <u>11,000</u> 10. | N ROSE SHOW FLAT PLATE - ICE GREEN OPAL. (ABSOLUTELY FANTASTIC ITEM; HAS TO BE ONE OF THE BEST EXAMPLES WE'VE SEEN; SUPER, SUPER, SUPER!) | ___ 30. | N G & C BOWL WITH PIE CRUST EDGE AND BASKETWEAVE EXTERIOR - HOREHOUND (EXTREMELY RARE COLOR FOR THIS ITEM! GREAT BRONZE IRID.) |
| <u>275</u> 11. | N ROSE SHOW VARIANT RUFFLED BOWL - RENNINGER BLUE (RARE AND DESIRABLE; GOLD/SILVERY IRID.) | <u>350</u> 31. | N G & C STIPPLED COVERED TOBACCO JAR - DK. MARI. (RARE AND VERY DESIRABLE; NICE COLOR AND IRID.; HAS SOME RIM ROUGHNESS) |
| <u>375</u> 12. | N GOOD LUCK BOWL WITH PIE CRUST EDGE AND RIBBED EXTERIOR - GREEN (VERY SCARCE; NICE MARI. OVERLAY) | ___ 32. | N G & C Covered Cracker Jar - Dk. Mari. (scarce; excellent color and irid.) |
| <u>335</u> 13. | N Good Luck Ruffled Bowl with Ribbed Exterior - Elec. Blue (scarce and very desirable; super blue and red highlights) | ___ 33. | N Beaded Cable ftd. Ruffled Candy Dish with Ribbed Interior - Pur. |
| ___ 14. | N Good Luck Ruffled Bowl with Basketweave Exterior - Pur. (absolutely super blue highlights - a great example) | ___ 34. | N Smooth Ribbed Interior 2 Handled Bon Bon - Pur. |
| <u>2450</u> 15. | N CORN VASE WITH STALK BASE - AQUA / TEAL (EXTREMELY RARE COLOR AND VERY DESIRABLE; A KEY ITEM NOT OFTEN SOLD) | ___ 34A. | N Anniversary Flat Tray - Mari. (very rare pattern) |
| <u>350</u> 16. | N G & C FTD. HATPIN HOLDER - GREEN (VERY SCARCE; NICE COLOR AND IRID.) | <u>1550</u> 35. | N PEACOCK AT THE URN FLAT MASTER ICE CREAM BOWL - ICE GREEN (HAS TO BE ONE OF THE FINEST EXAMPLES WE'VE SEEN; SUPER, SUPER!) |
| <u>250</u> 17. | N G & C ftd. Hatpin Holder - Pur. (scarce; silvery) | ___ 36. | N Peacock at the Urn Individual Ice Cream Bowl - Mari. (nice color; has one pulled edge) |
| ___ 18. | N G & C Covered Powder Jar - Pur. (nice color; scarce and perfect) | <u>400</u> 37. | N PEACOCKS PLATE WITH RIBBED EXTERIOR - LIME ICE GREEN (VERY SCARCE COLOR FOR THIS ITEM; NICE BASE GLASS AND IRID.) |
| ___ 19. | N G & C Oval / Banded Dresser Tray - Pur. (scarce; nice color) | <u>425</u> 38. | N PEACOCKS BOWL WITH PIE CRUST EDGE AND RIBBED EXTERIOR - AMY. (VERY SCARCE; AND VERY ATTRACTIVE; NICE COLOR AND IRID.) |
| ___ 20. | N G & C Tri-Cornered Handled Punch Cup Whimsey Nappy - Pur. (scarce) | ___ 39. | N Peacock at the Fountain Handled Punch Cup - Pur. (super color and irid.; has elec. blue highlights) |

- 2700 40. **N PEACOCK AT THE FOUNTAIN WATER PITCHER - DK. ICE BLUE (ABSOLUTELY SUPER DARK COLOR AND IRID.; GREAT ITEM!)**
- 300 41. **N PEACOCK AT THE FOUNTAIN WATER PITCHER - WHITE (SCARCE AND VERY DESIRABLE; NICE COLOR AND IRID.; HAS SMALL BRUISE ON INSIDE)**
42. **(5) N PEACOCK AT THE FOUNTAIN INDIVIDUAL BERRY BOWLS - ICE BLUE (GREAT COLOR AND SCARCE; SELLING SO MUCH EACH FOR SET)**
43. N Singing Bird Table Set Creamer Only - Pur. (scarce item with great color and irid.)
44. N Singing Bird Table Set Spooner Only - Pur. (another scarce item with nice color)
- 350 45. **N SINGING BIRD HANDLED MUG - AQUA OPAL. (EXTREMELY RARE AND DESIRABLE; HAS MINOR FLAT FLAKE ALONG TOP EDGE - A SUPER EXAMPLE) ***
46. N Peacock at the Fountain Tumbler - Elec. Blue (super color and irid.; has the tiniest flake on mold line)
47. N Singing Bird Handled Mug with Stenciled Advertising "Amazon Hotel & Cafe - 38 Fairfield Ave., Bridgeport, Ct." - Pur. (super color and irid.; nice example)
48. **N SINGING BIRD COVERED BUTTER DISH - DK. MARI. (SUPER COLOR AND IRID.; VERY SCARCE; OPEN BUBBLE ON BASE)**
49. (4) N Peacock at the Fountain Individual Berry Bowls - Pur. (nice color and irid.; selling so much each for set)
50. **N GRAPE ARBOR TANKARD WATER PITCHER - WHITE (SUPER FROSTY WITH SUPER IRID.; VERY SCARCE)**
51. **(2) N GRAPE ARBOR TUMBLERS - WHITE (SCARCE; NICE COLOR AND IRID.; SELLING PAIR)**
52. (2) N Grape Arbor Tumblers - White (both have flat flakes on base; selling pair)
53. (2) N Grape Arbor Tumblers - Dk. Mari. (super, super color and irid.; selling choice)
54. N Dandelion Tumbler - Pur. (nice color)
55. **N ORIENTAL POPPY TUMBLER - BLUE (VERY RARE; VERY NICE COLOR AND IRID.; REALLY NICE!)**
56. N Greek Key Tumbler - Pur. (scarce; very nice color and irid.)
- 225 57. **N FINE CUT & ROSES FTD. ROSE BOWL WITH FANCY INTERIOR - ICE BLUE (VERY SCARCE; A BIT SILVERY; MAY HAVE A ROUGH FOOT OR TWO)**
58. N Fine Cut & Roses ftd. Rose Bowl - Pur. (nice color; flaked on one foot)
59. N Fine Cut & Roses ftd. Rose Bowl - Mari. (has small chip on one foot)
- 725 60. **N THREE FRUITS STIPPLED PLATE WITH RIBBED EXTERIOR - PUR. (ABSOLUTELY FANTASTIC MULTI-COLORED EXAMPLE WITH ELEC. BLUE HIGHLIGHTS; NOT A BIT OF WEAR - ANYWHERE!)**
61. N Three Fruits Ruffled Bowl with Basketweave Exterior - Pur. (a bit silvery)
62. N Fruit and Flowers Handled Stemmed Bon Bon - Amy. (super color and irid.; has reddish, blue highlights)
63. N Fruit and Flowers Handled Stemmed Bon Bon - Pur. (nice color and irid.)
64. N Wishbone Deep Ruffled ftd. Bowl with Ruffles and Rings Exterior - Pur. (really nice irid.)
- 550 65. **N WISHBONE 2 PC. EPERGNE - AMY. (VERY SCARCE; NICE MULTI-COLORED IRID.)**
66. N Wishbone 8 Ruffled Bowl with Basketweave Exterior - Pur. (scarce; a bit silvery)
- 245 67. **N RASPBERRY MILK PITCHER - GREEN (SUPER SCARCE WITH REALLY NICE COLOR AND IRID.; HAS MANUF. PINHEAD)**
68. N Raspberry Milk Pitcher - Mari. (scarce; one side a bit light)
69. N Raspberry ftd. Occasional Gravy Boat - Dk. Mari. (super color and irid.; normal pinhead on foot)
70. **N LEAF AND BEADS FTD. ROSE BOWL - AQUA OPAL. (GREAT BUTTERSCOTCH OVERLAY; GREAT COLOR, IRID. AND OPAL. ON TOP)**
71. N Leaf and Beads ftd. Rose Bowl - Blue (average color and irid.)
72. N Leaf and Beads ftd. Rose Bowl with Ribbed Interior - Pur. (average color; manuf. split on edge)
73. N Leaf and Beads ftd. Rose Bowl with Ribbed Interior - Mari. (scarce; nice average color and irid.)
74. N Leaf and Beads Tri-Cornered ftd. Bowl with Ribbed Interior - Mari. (nice item)
75. N Leaf and Beads domed 8 Ruffled Nut Dish - Green (very scarce item; has dark mari. overlay)
76. N Wild Rose Flared ftd. Nut Bowl with Stippled Rays Interior - Pur.
77. N Wild Rose Flared ftd. Nut Bowl with Plain Interior - Green
78. N Wild Rose Flared ftd. Nut Bowl with Ribbed Interior - Mari.
79. N Wild Rose Deep Round ftd. Nut Bowl with Ribbed Interior - Green (almost sits on just the collar base)
- 725 80. **N HEART AND FLOWERS BOWL WITH PIE CRUST EDGE AND RIBBED EXTERIOR - PUR. (SCARCE AND VERY DESIRABLE; NICE COLOR AND PERFECT; A BIT GOLD INSIDE - BLUES AND REDS ON EDGE)**
81. **N STRAWBERRY RUFFLED BOWL WITH BASKETWEAVE EXTERIOR - PUR. (GREAT COLOR AND IRID.; SATINY BLUE HIGHLIGHTS)**
82. N Strawberry Bowl with Pie Crust Edge and Basketweave Exterior - Green (nice color, desirable)
83. N Strawberry Plate with Basketweave Exterior - Pur. (nice above average color and irid.)
84. N Wild Strawberry Handgrip Plate with Basketweave Exterior - Pur. (very scarce shape; a bit goldish)
- 375 85. **11" N TREE TRUNK SWUNG VASE - ICE BLUE (VERY DESIRABLE ITEM; NICE COLOR AND IRID.)**
86. **N DRAPERY ROSE BOWL - AQUA OPAL. (NICE COLOR AND IRID.; VERY SCARCE; HAS FLAKE UNDER BASE)**
87. **N DRAPERY TRI-CORNERED CANDY DISH - ICE BLUE (SCARCE AND VERY DESIRABLE; NICE COLOR AND IRID.)**
88. N Nippon Ruffled Bowl with Basketweave Exterior - Pur. (scarce; very nice multi-colored satiny finish)
89. N Nippon Ruffled Bowl with Basketweave Exterior - Mari. (scarce; nice color and irid.)
90. N Acorn Burr 4 pc. Berry Set - Dk. Mari. (scarce; nice color and irid.)
91. N Acorn Burr Master Berry Bowl - Pur. (nice item; nice average color and irid.)
92. **N ACORN BURR HANDLED SPOONER - GREEN (VERY SCARCE ITEM; NICE COLOR AND IRID.)**
93. 6 1/2 - 7" N Fine Rib Swung Vase - Pur. (nice color and irid.)
94. 9 1/2" N Stippled Rays Bowl with Pie Crust Edge and Plain Exterior - Pur. (super color and irid.)
- 220 95. **N BUTTERFLY HANDLED BON BON WITH SPIRAL EXTERIOR - PUR. (NICE COLOR AND IRID.; VERY SCARCE VARIATION)**

- ____ 95A Pair N Colonial Large Size Candlesticks - Celeste Blue (desirable; nice)
 ____ 96. Dugan Leaf Rays Handled Nappy - Pur. (super irid.)
 ____ 97. Dugan Leaf Rays Handled Nappy - White (super irid.)
 ____ 98. Dugan Leaf Rays Handled Nappy - Dk. Mari. (nice color and irid.)
 ____ 99. Dugan Vintage Grape Stemmed Wine Glass - Amy. (really nice irid.)
375 100. **10 1/2 - 11" DUGAN VICTORIAN LARGE 6 RUFFLED BOWL - PUR. (VERY SCARCE AND UN- DERATED PATTERN; THIS IS ONE OF THE NIC- ER EXAMPLES)**
260 101. **DUGAN PONY 6 RUFFLED BOWL - PUR. (SUPER IRID. ON A SCARCE ITEM)**
 ____ 102. Dugan Stork and Rushes with Lattice Band 2 sided Hat - Amy. (scarce shape; nice color)
 ____ 103. (3) Dugan Stork and Rushes with Beaded Top In- dividual Berry Bowls - Amy. (scarce items; sold per each)
 ____ 104. Dugan Stork and Rushes with Beaded Top Tumbler - Blue (nice color; pinhead)
 ____ 105. **DUGAN SKI STAR LARGE 6 RUFFLED BOWL - PUR. (VERY SCARCE; HAS OUTSTANDING BRIGHT MULTI-COLORED IRID.)**
 ____ 106. Dugan Vineyard Tumbler - Pur. (scarce; nice color and irid.)
 ____ 107. Dugan Beaded Basket - Amy. (scarce; sorta goldish irid.)
 ____ 108. Dugan Beaded Basket - Lt. Mari.
 ____ 109. Dugan Question Mark Handled Stemmed Bon Bon - Mari.
 ____ 110. **DUGAN BROOKLYN BRIDGE 10 RUFFLED BOWL - DK. MARI. (RARE AND DESIRABLE; GREAT COLOR AND DETAIL)**
300 111. **9" DUGAN ROUND UP FLAT PLATE - LT. P. OPAL. (VERY SCARCE; VERY DESIRABLE; GREAT IRID.; LIGHT OPAL. ON EDGE)**
 ____ 112. 9" Dugan Round Up Low Ruffled Bowl / Plate - Blue (scarce; nice color and irid.)
 ____ 113. 7 1/2" Dugan Grapevine Lattice Flat Plate - Mari. (scarce; really nice satiny finish - nice!)
 ____ 114. Dugan Vintage Grape Covered Powder Jar - Mari. (nice color)
 ____ 115. (5) Dugan Persian Garden Individual Round Ice Cream Bowls - White (nice color and irid. on all; all dif- ferent sizes; selling choice)
 ____ 116. (2) Dugan Constellation Stemmed Ruffled Compotes - White (nice color; selling choice)
 ____ 117. (2) Dugan Grapevine Lattice Low Ruffled Bowl / Plates - White (nice color and irid.; selling choice)
 ____ 118. 6 1/2 - 7" Tall Dugan Target Squatty Ruffled Vase - White (scarce size; nice color and irid.)
 ____ 119. 10" Dugan Lined Lattice Swung Vase - White (nice color and irid.)
 ____ 120. **DUGAN FLORAL AND GRAPE BULBOUS WA- TER PITCHER - AMY.**
 ____ 121. Dugan Beaded Shell Handled Mug - Amy. (nice co- lor)
 ____ 122. 8 1/2" Dugan Lined Lattice Swung Vase - Amy. (nice color and irid.)
 ____ 123. Dugan Grape Delight 6 ftd. Nut Bowl - Amy. (nice goldish finish)
 ____ 124. Dugan Cherry Wreath Oval Master Berry Bowl - Pur. (really nice color and irid.)
 ____ 125. Dugan Folding Fan Stemmed Crimped Edge Ruffled Compote - P. Opal. (light irid.; nice opal.)
 ____ 126. 9 1/2" Dugan Pulled Loop Swung Vase - Lt. P. Opal.
 ____ 127. 9 1/2" Dugan Double Stem Rose Flat domed Ice Cream Shaped Bowl - Mari.
 ____ 128. Dugan Holly Whirl 6 Ruffled Bowl - P. Opal.
 ____ 129. Dugan Thumbprint Stemmed Ruffled Compote - Mari.
 ____ 130. **DUGAN DAISY AND LATTICE TUMBLER - BLUE (RARE; VERY NICE IRID.)**
 ____ 131. Dugan Wreath of Roses Rose Bowl - Mari.
 ____ 132. Dugan Many Fruits Punch Cup - Pur. (super color and irid.)
 ____ 133. Dugan Stork and Rushes Punch Cup - Amy.
 ____ 134. U.S. Glass Cosmos and Cane Covered Sugar Bowl - Honey Amber (very scarce item; nice color and irid.)
750 135. **U.S. GLASS PALM BEACH LARGE JAR- DINERE TYPE BULBOUS VASE - MARI. (RARE ITEM WITH ORIGINAL GOLD GOO- FUS TRIM, REALLY NICE)**
 ____ 136. (2) 6" M'burg Cosmos Ice Cream Shaped Bowls - Green (selling choice, radium)
190 137. 5 1/2 - 6" M'burg Grape Wreath Small Crimped Edge Ruffled Sauce - Green (really odd shape; nice radium finish)
 ____ 138. 8 1/2" M'burg Mayan Ice Cream Shaped Bowl - Green (odd tint - almost olive green; nice radium irid.)
 ____ 139. M'burg Diamond Tumbler - Amy. (great radium finish; super color)
360 140. **9" M'BURG PEACOCK AT THE URN "MYSTERY" 6 RUFFLED BOWL - GREEN (RARE AND DE- SIRABLE; REALLY NICE IRID.; HAS SMALL DIS- COLORED STREAK)**
325 141. **9" M'BURG TROUT AND FLY 6 RUFFLED BOWL - MARI. (LIGHTER SATINY FINISH; VERY SCARCE)**
360 142. **9 1/2" M'BURG NESTING SWAN 6 RUFFLED BOWL - GREEN (SATINY; NICE COLOR AND IRID.; SCARCE)**
 ____ 143. **9 1/2" M'BURG HOLLY SPRIG 6 RUFFLED BOWL - AMY. (SUPER RADIUM FINISH; VERY NICE CO- LOR)**
 ____ 144. M'burg Peacock Tail Variant Stemmed Ruffled Com- pote - Amy. (nice radium finish, lighter in center)
400 145. **M'BURG SWIRL HOBNAIL ROSE BOWL - PUR. (VERY SCARCE AND DESIRABLE; NICE COLOR AND HEAVY)**
525 146. **5 1/2" M'BURG "THE GREAT HOUSE OF ISAAC BENESCH & SONS" RUFFLED ADVERTISING BOWL - AMY. (RARE AND GETTING TOUGHER TO FIND)**
 ____ 147. 7 1/2" M'burg Grape Wreath Ice Cream Shaped Bowl - Dk. Mari. (super radium finish)
 ____ 148. Sowerby Pedestaled Vase - Dk. Mari. (nice color and irid.)
 ____ 149. Sowerby Pineapple Low 6 Ruffled Bowl - Mari.
825 150. **CAMBRIDGE DOUBLE STAR 7 PC. WATER SET - GREEN (RARE SET; GREAT COLOR AND IRID.; VERY WELL MATCHED SET)**
 ____ 151. **9 1/2 - 9 3/4" CAMBRIDGE INVERTED STRAW- BERRY LARGE 8 RUFFLED MASTER BERRY BOWL - GREEN (VERY RARE COLOR FOR THIS ITEM - PRETTY TOUGH!)**
375 152. **CAMBRIDGE INVERTED STRAWBERRY COV- ERED POWDER JAR - DK. MARI. (SUPER COLOR AND DARK IRID. - A GREAT ITEM!)**
 ____ 153. Westmoreland Louisa ftd. Rose Bowl and ftd. Nut Dish - Aqua / Teal (selling choice)
 ____ 154. Westmoreland Strutting Peacock Covered Sugar and Covered Creamer - Amy. (selling pair)
650 155. **9 1/2" AUSTRALIAN KINGFISHER LARGE ICE CREAM BOWL - DK. PUR. (SUPER COLOR AND A VERY RARE SHAPE; NICE)**
 ____ 156. 9" Australian Kingfisher Large Ruffled Bowl - Dk. Mari. (super scarce; nice color and irid.)
 ____ 157. 5 1/2" Australian Kingfisher Small Ruffled Sauce - Dk. Mari. (scarce; super color and irid.)
 ____ 158. 9 1/4" Australian Kookaburra Large Ruffled Bowl - Dk. Pur. (very scarce; great color and irid.)

159. 9 1/4" Australian Kookaburra Large Ruffled Bowl - Dk. Pur. (very scarce; nice color and irid.)
160. 9 1/4" Australian Kookaburra Large Ruffled Bowl - Dk. Mari. (scarce color; nice irid.)
161. 5 1/2" Australian Kookaburra Small Ruffled Sauce - Dk. Pur. (scarce; nice irid.)
162. 5 1/2" Australian Kookaburra Small Ruffled Sauce - Dk. Mari. (very scarce; nice color and irid.)
- 650 163. **9 1/2" AUSTRALIAN EMU LARGE RUFFLED BOWL - MARI. (SUPER COLOR AND IRID.; VERY RARE ITEM)**
164. **(2) 9 1/2" AUSTRALIAN MAGPIE LARGE RUFFLED BOWL - DK. PUR. (SELLING CHOICE, BOTH ARE REALLY NICE EXAMPLES)**
165. **AUSTRALIAN BUTTERFLY BOWER STEMMED ROUND ICE CREAM SHAPED COMPOTE - DK. PUR. (VERY RARE SHAPE - SUPER COLOR AND DETAIL - A GREAT ITEM!)**
166. Australian Butterfly Bower Stemmed Ruffled Compote - Dk. Pur. (scarce; nice color and irid.)
- 410 167. 9 1/2" Australian Nesting Swan Deep Ruffled Bowl - Dk. Pur. (super color and super irid.; a great example)
168. 5 1/2" Australian Nesting Swan Ruffled Berry Bowl - Dk. Pur. (scarce; great color and irid.)
169. 5 1/2" Australian Nesting Swan Ruffled Berry Bowl - Dk. Mari. (very scarce; super color and irid.; nice!)
- 375 170. **FENTON BLACKBERRY SPRAY RUFFLED HAT - RED (RARE AND DESIRABLE; NICE RED SATINY FINISH)**
- 395 171. **FENTON HOLLY LOW RUFFLED HAT SHAPE - RED (RARE AND DESIRABLE; NICE RED SATINY FINISH)**
- 700 172. **7 1/2" FENTON ACORNS LOW RUFFLED BOWL - RED SLAG (GREAT DARK COLOR WITH SLAG EFFECT; A BIT SILVERY)**
- 300 173. **FENTON TWO ROW OPEN EDGE RUFFLED HAT SHAPE - RED (GREAT RED; HAS MANUF. CHECK IN BASE)**
174. **FENTON TWO ROW OPEN EDGE 2 SIDED HAT SHAPE - RED (NICE DARK COLOR; HAS DARK IRID.; A BIT SILVERY)**
175. **10" FENTON FINE RIB SWUNG VASE - RED (RARE AND DESIRABLE; NICE COLOR AND IRID.)**
176. Fenton Little Fishes ftd. Ruffled Sauce - Amy. (very scarce color; nice irid. and detail)
177. (2) Fenton Little Fishes ftd. Ruffled Sauces - Dk. Mari. (very nice color and irid.; selling choice)
178. Fenton Panther ftd. Ruffled Sauce - Mari. (nice irid.)
179. Fenton Kittens Saucer - Mari. (scarce; has a tiny flake on the edge)
180. **FENTON HORSEHEAD MEDALLION JACK IN THE PULPIT FTD. BOWL - BLUE (VERY SCARCE; NICE DETAIL AND COLOR)**
181. **FENTON STAG AND HOLLY SPATULA FTD. RUFFLED BOWL - BLUE (SUPER IRID. FOR THIS ITEM; SCARCE)**
182. Fenton Stag and Holly spatula ftd. Ruffled Bowl - Green (scarce; nice detail; a bit silvery)
183. **FENTON PEACOCK AT THE URN STEMMED RUFFLED COMPOTE - AQUA / MARI. (VERY SCARCE; NICE BASE GLASS COLOR)**
184. Fenton Peacock at the Urn Ice Cream Shaped Bowl - Blue (very nice color and irid.; has rough pulled point)
185. Fenton Peacock at the Urn Ruffled Bowl - Blue (scarce; gold / silvery irid.)
186. Fenton Peacock at the Urn Deep Round Flared Compote - Blue
187. Fenton Peacock and Grape Ruffled Bowl - Green (great color and irid.)
188. Fenton Peacock and Grape ftd. Ruffled Bowl - Green (nice color and irid.)
189. Fenton Peacock and Grape spatula ftd. Ruffled Bowl - Lt. P. Opal. (very scarce item; small chip on knob under one foot)
- 600 190. **FENTON BUTTERFLY AND FERN BULBOUS WATER PITCHER - GREEN (VERY DESIRABLE ITEM; ABOVE AVERAGE IRID. AND NICE)**
191. (3) Fenton Butterfly and Fern Tumblers - Green (selling choice; nice; have collar base)
192. (3) Fenton Butterfly and Fern Tumblers - Amy. (really nice; manuf. ground base; selling choice)
193. Fenton Butterfly and Fern Tumbler - Blue (scarce; has manuf. ground base)
194. Fenton Panelled Dandelion Tumbler - Amy. (has to be the best we've seen; high chip at the base)
- 600 195. **6 1/2" FENTON PERSIAN MEDALLION FLAT PLATE - ELECTRIC GREEN (ABSOLUTELY FANTASTIC COLOR AND IRID. FOR A RARE ITEM; HAS SOME FLAWS ON THE EDGE WHEN MADE BUT SUPER, SUPER)**
196. 9" Fenton Persian Medallion 6 Ruffled Bowl with Plain Exterior - Green (scarce color; nice)
197. **FENTON PERSIAN MEDALLION SMALL SIZE STEMMED RUFFLED COMPOTE - BLUE (RARE SIZE; VERY DESIRABLE ITEM)**
198. Fenton Stream of Hearts / Persian Medallion Large Stemmed Ruffled Compote - Dk. Mari. (scarce item; small flake on base)
199. **FENTON G & C FTD. RUFFLED FRUIT BOWL WITH PERSIAN MEDALLION INTERIOR - BLUE (VERY SCARCE; HAS BEAUTIFUL COLOR AND IRID.)**
- 850 200. **9" FENTON LEAF CHAIN FLAT PLATE - EMERALD GREEN (THIS IS ONE THAT HAS GREAT BLUE IRID. - A SUPER EXAMPLE)**
201. 8 1/2" Fenton Leaf Chain 6 Ruffled Bowl - Elec. Blue (great color and irid.; red and blue highlights)
202. 7 1/2" Fenton Leaf Chain Ruffled Bowl - White (scarce size for the pattern)
203. 7 1/2" Fenton Leaf Chain Ruffled Bowl - Amy. (rare color for this item; flake on back edge)
204. Fenton Blackberry Miniature Stemmed Round Compote - Blue (perfect and has nice color and irid.)
205. **9" FENTON CAPTIVE ROSE PLATE - BLUE (VERY SCARCE; NICE DETAIL AND COLOR)**
206. 8 - 8 1/2" Fenton Captive Rose Bowl with 3 in 1 Edge - Blue (great color and irid.)
207. 9 1/2" Fenton Cherry Chain Large Ruffled Bowl - Blue (nice sized item; irid. a bit silvery)
208. 9 1/2" Fenton Two Flowers Deep Ruffled Ball ftd. Bowl - Blue (nice satiny finish)
209. 7 1/2" Fenton Pine Cone 6 Ruffled Bowl - Blue
210. **FENTON FTD. ORANGE TREE HATPIN HOLDER - BLUE (SCARCE; NICE COLOR AND IRID.; SOME ROUGHNESS ON FEET)**
211. Fenton Orange Tree Creamer - Elec. Blue (great color and condition; nice item)
212. Fenton Orange Tree Punch Bowl and Base - Blue (top has damaged flange, base is OK)
213. (3) Fenton Orange Tree Punch Cups - Blue (selling choice)
214. Fenton Orange Tree Stemmed Sherbet - Elec. Blue (super color and irid.)
215. Fenton Orange Tree Stemmed Sherbet - White (rare color for this item)
216. 8 1/2 - 9" Fenton Orange Tree 6 Ruffled Bowl - Blue (really nice color and irid.)
217. 8 1/2 - 9" Fenton Orange Tree 6 Ruffled Bowl - Mari. (nice color and irid.)
218. Fenton Orange Tree Standard Flared Mug - Dk. Mari.
219. Fenton Fentonia ftd. Round Individual Berry Bowl - Blue (scarce)

- ___ 220. Fenton Enamelled Cherries 8 pc. Bulbous Water Set - Blue (scarce; nice decor.)
- ___ 221. 8 1/2" Fenton Ribbon Tie Bowl with 3 in 1 Edge - Green (nice irid.)
- ___ 222. 9 1/2 - 10" Fenton Feathered Serpent 6 Ruffled Bowl - Dk. Mari.
- ___ 223. Fenton Dragon and Lotus Ice Cream Shaped Bowl - Blue (nice detail)
- ___ 224. Fenton Dragon and Lotus Ice Cream Shaped Bowl - Mari.
- ___ 225. 7 - 7 1/2" Fenton Rustic Squatty Swung Vase - White (nice size)

START OF SECOND SESSION

- ___ 226. Fenton Stretch Stemmed Ruffled Bud Vase - Ice Green (odd item)
- ___ 227. Fenton Peacock Tail Ruffled Hat with 1910 General Furniture Ad. - Green (scarce; nice item)
- ___ 228. Fenton Peacock Tail Stemmed Ruffled Compote - Green
- ___ 229. 7 1/2" Fenton G & C Deep Round Bowl - Blue (nice color and irid.)
- ___ 230. 5 1/2" Fenton Boggy Bayou Squatty Swung Vase - Blue (scarce pattern and size)
- ___ 231. 12 1/2 - 13" Fenton April Showers Swung Vase - Amy.
- ___ 232. 12" Fenton April Showers Swung Vase - Amy.
- ___ 233. 11 1/2" Fenton April Showers Swung Vase - Green
- ___ 234. 10" Fenton Rustic Swung Vase - Blue
- ___ 235. Fenton Butterfly and Berry Tumbler - Blue
- ___ 236. Fenton Fantail / Butterfly and Berry Exterior ftd. Flared Master Berry Bowl - Blue (nice color)
- ___ 237. Fenton Strawberry 2 Handled Bon Bon - Blue (nice color)
- ___ 238. Fenton Two Row Open Edge Ruffled Hat - Blue
- ___ 239. Fenton Lotus and Poinsettia ftd. Ruffled Sauce - Mari.
- ___ **240. FENTON LEAF TIERS FTD. SPOONER - DK. MARI. (SCARCE IF YA NEED ONE)**
- ___ 241. Fenton Garland ftd. Rose Bowl - Blue
- ___ 242. Fenton Scotch Thistle Stemmed Ruffled Crimped Edge Compote - Green (scarce; nice color)
- ___ 243. Fenton Holly Stemmed Ruffled Compote - Blue
- ___ 244. Fenton Holly Ice Cream Shaped Bowl - Mari.
- ___ 245. Fenton Thistle 6 Ruffled Bowl - Blue
- ___ 246. Fenton Thistle Bowl with Tight Crimped Candy Ribbon Edge - Green
- ___ 247. 5 1/2" Fenton Sailboats Ruffled Sauce - Blue
- ___ 248. Fenton Rose Wreath Punch Cup with Vintage Grape Interior - Blue
- ___ 249. Fenton Rose Wreath Punch Cup with Vintage Grape Interior - Amy.
- 700 ___ **250. 11" IMPERIAL HEAVY GRAPE FLAT CHOP PLATE - PUR. (ABSOLUTELY FANTASTIC COLOR AND IRID. - SUPER!)**
- ___ 251. Imperial Heavy Grape Handled Nappy - Pur. (super color and scarce)
- ___ 252. 8" Imperial Embossed Scroll Ruffled Bowl with Odd Hobstar Exterior - Pur. (nice color and irid.)
- ___ 253. 5" Imperial Embossed Scroll Deep Round Berry Bowl with File Exterior - Pur. (great color and irid.)
- ___ 254. 5 1/2" Imperial Embossed Scroll Ruffled Sauce with File Exterior - Pur. (great color and irid.)
- ___ 255. 8 1/2 - 9" Imperial Embossed Scroll Round Flared Bowl - Pur. (great color and irid.)
- ___ 256. 8" Imperial Acanthus Deep Round Bowl - Pur. (scarce; super color and irid.)
- ___ 257. 9 1/2 - 10" Imperial Acanthus Chop Plate - Mari. (scarce; nice color and great irid.)

- ___ 258. 7 1/2" Imperial Heavy Grape Flat Plate - Pop Bottle Aqua / Mari. (very odd tint - has a light aqua base - nice!)
- ___ 259. Imperial Pansy 8 Ruffled Bowl - Amy.
- ___ **260. IMPERIAL BROKEN ARCHES 8 PC. PUNCH SET - PUR. (SCARCE SET; BASE AND CUPS ARE SILVER, TOP IS GREAT AND HAS SMALL ROUGH SPOT)**
- ___ 261. Imperial Diamond Lace Water Pitcher - Pur. (scarce; super irid.)
- ___ 262. (3) Imperial Diamond Lace Tumblers - Pur. (super color and irid.; selling choice)
- ___ 263. 5" Imperial Windmill Deep Round Sauce - Amy. (great color and irid.)
- ___ 264. 9 - 9 1/2" Imperial Ripple Standard Swung Vase - Pur. (super color and irid.)
- ___ **265. IMPERIAL GRAPE WINE DECANter AND STOPPER - PUR. (VERY SCARCE; SUPER COLOR AND IRID.)**
- ___ 266. Imperial Grape Stemmed Wine Glass - Pur. (a bit goldish)
- ___ 267. Imperial Diamond Sunburst Stemmed Wine Glass - Pur. (absolutely super color and irid.)
- ___ 268. Imperial Grape Wine Decanter and Stopper - Green (scarce; better than average color; stopper cracked)
- ___ 269. Imperial Grape Wine Decanter and Stopper - Mari. (badly cracked)
- ___ 270. Imperial Grape Large Ruffled Master Berry Bowl - Pur. (super color)
- ___ 271. (3) Imperial Grape Stemmed Wine Glasses - Mari. (selling so much each for 3)
- ___ 272. Imperial Grape Punch Base Only and 4 Cups - Helios Green (selling as a set)
- ___ **273. IMPERIAL OCTAGON HANDLED SPOONER - LIME GREEN (ODD SHADE; REALLY NICE)**
- ___ 274. (4) Imperial Oval and Round Ruffled Individual Berry Bowls - Smoke (selling as set)
- ___ **275. IMPERIAL DIAMOND SUNBURST 8 PC. WINE SET - MARI. (SCARCE SET; NICE COLOR)**
- ___ 276. (3) Imperial Octagon Stemmed Wine Glasses - Mari. (selling so much each)
- ___ 277. Imperial Beaded Bullseye Swung Flared Vase - Dk. Mari. (nice color)
- ___ 278. Imperial Poinsettia Milk Pitcher - Dk. Mari. (nice color)
- ___ 279. Imperial Star Medallion Milk Pitcher - Mari.
- ___ 280. Imperial Windmill 9 pc. Large Size Water Set - Mari. (very attractive set; nice color)
- ___ 281. Imperial Fashion 12 pc. Flared Punch Set - Mari. (very showy set; scarce with flare)
- ___ 282. 8" Imperial Jewels Large Square Ruffled Bowl - Mari. (signed with Iron Cross; nice)
- ___ 283. 7 1/2" Imperial Optic Flared Bowl and Underplate - Mari. (signed with Iron Cross, underplate is not)
- ___ 284. Imperial Propeller Small Ruffled Compote - Dk. Mari.
- ___ 285. Imperial Wide Panel Handled Mug or Parfait - Dk. Mari.

MISC. GLASSWARE

- ___ **M1 EUROPEAN LOETZ TYPE KEROSENE LAMP WITH BUTTERFLIES ON POT METAL BASE - CRAN. IRID.**
- ___ **M2 15 - 16" LARGE BULBOUS LOETZ VASE - PUR. WITH LARGE THREADS**
- ___ **M3 N'WOOD BLOWN TWIST 5 PC. BULBOUS TANKARD WATER SET - BLUE OPAL. (VERY DESIRABLE WATER PITCHER; TUMBLERS AS IS)**
- ___ **M4 10" NAILSEA POUR SPOUT BOTTLE WITH AMBER HANDLE - BLUE OPAL. PULLED LOOP**
- ___ **M5 LG Wright / Fenton Polka Dot Lemonade Lip Bulbous Water Pitcher - Blue Opal.**

- ___ M6 LG Wright / Fenton Daisy and Fern Cruet and Stopper - Cran. Opal.
- ___ M7 LG Wright / Fenton Stars and Stripes Tumbler - Cran. Opal.
- ___ M8 (4) LG Wright / Fenton Daisy and Fern Tumblers - Cran. Opal.
- ___ M9 (2) European Satin / Burmese Wax Holders - Pink / Crystal Edge
- ___ M10 15 - 16" Tall Decorated Bohemian Flared Vase - Enamelled Cranberry
- ___ M11 (3) N Peacock at the Urn Individual Ice Cream Bowls - Custard / Nutmeg (scarce; selling choice)
- ___ M12 7 - 8" Fenton Hobnail Stemmed Ruffled Compote - Vas. Opal.
- ___ M13 N'wood 9 pc. Enamelled Decorated Water Set - Crystal Blue (really nice pitcher; tumblers have a variety of decoration)
- ___ M14 Enamelled Decorated Tumbler with Cherries - Crystal Blue
- ___ M15 N Enamelled Daisies Decorated 6 pc. Tankard Water Set - Amy. Crystal
- ___ M16 Greentown Teardrop and Tassel Water Pitcher - Crystal
- ___ M17 Greentown Teardrop and Tassel Covered Butter Dish - Crystal
- ___ M18 Greentown Teardrop and Tassel 6 pc. Berry Set - Crystal
- ___ **M19 HOBBS HOBNAIL BULBOUS WATER WITH PLAIN FROSTED HANDLE - FROSTED RUBINA (GREAT ITEM; NICE CONDITION)**
- ___ M20 Libbey Maize (Corn) Water Pitcher - Green Decorated Milk Glass (check across base of handle)
- ___ **M21 4 - 5" MARY GREGORY PERFUME ATOMIZER WITH BULB - CRYSTAL BLUE (DECORATION OF BOY BLOWING BUGLE)**
- ___ M22 N Round Bushel Basket - Ebony (signed)
- ___ M23 Newer Diamond Quilted Bulbous Water Pitcher - Pink Satin
- ___ M24 N'wood Royal Oak Toothpick Holder - Frosted Rubina (scarce; nice)
- ___ M25 N'wood Royal Oak Covered Butter Dish - Rubina (very scarce and desirable; nice)
- ___ M26 N'wood Royal Oak Bulbous Water Pitcher - Rubina (cracked)
- ___ **M27 8 1/2 - 9" LALIQUE, FRANCE ICE CRYSTAL PATTERN LARGE FLARED VASE - CRYSTAL FROSTED**
- ___ M28 Lenox 3 pc. Tea Set - Cobalt / Silver Overlay
- ___ **M29 6 1/2" OPENING X 5" TALL NAKARA FERNERY WITH DECORATED PANSIES - PINK TO GREEN**
- ___ M30 12 1/2" Tall Portrait Vase "Cupid's Punishment" by Zatzk - signed Victoria Austria (Crown Mark)

R.S. PRUSSIA

- ___ 1P 10 1/2" RM Floral Bowl - Glossy with Roses
- ___ 2P (4) 8" RM Plates - Gold / Yellow Trim with 4 Roses (sold so much each for set)
- ___ 3P 9" RM Hanging Basket of Flowers Open Handled Cake Plate (yellow / pink background)
- ___ 4P 8 1/2" RM Plate with Roses and Daisies - Stippled Flower Edge with Green and Tiffany
- ___ **5P 11" RM FLORAL TANKARD, ROSES WITH AUTUMN GREENS AND YELLOWS (? MOLD)**
- ___ **6P 11 - 11 1/2" RM FLORAL RELISH, IRIS MOLD WITH RED AND GOLD TRIM**
- ___ 7P (5) 5 1/2" RM Floral Individual Berry Bowls, Iris Mold with Red and Gold Trim (sold so much each for set)
- ___ 8P 10 - 10 1/2" RM Dogwood Floral Master Berry Bowl

- ___ 9P 8 1/2 - 9" RM Floral Bowl with Dogwoods, Sky Blue and Yellow Trim
- ___ **10P 10 1/2" RM FLORAL BOWL WITH TIFFANY AND RED TRIM, JEWELLED**
- ___ 11P 10 1/2" RM Floral Daisies and Jonquil Edge Bowl in a Bowl (Olive Green / Gray)
- ___ **12P RSP ROSE SHAVING MUG AND SAUCER (VERY RARE ITEM)**
- ___ 13P RSP Poppy Sugar Shaker
- ___ 14P (6) RM RSP Easter Lily Rectangular Pin Trays (selling so much each for set)
- ___ 15P RM RSP 3 pc. Teapot, Covered Sugar and Odd Mold Creamer with Carnations (sugar base chipped - same floral design but creamer mold different)
- ___ 16P RSP RM Hanging Basket of Flowers Chocolate Set (pot and one cup 'as is')
- ___ 17P RSP RM Handled Floral Toothpick Holder (hairline)
- ___ 18P RSP RM Pedestaled Cup and Saucer, Roses and Pur. Satin Finish
- ___ 19P RSP RM Cup and Saucer with Roses and Satin Finish
- ___ 20P RSP RM 2 Handled Candy Dish with Poppy (?) Mold and Magnolia Flowers
- ___ 21P RSP RM Covered Sugar and Creamer with Snowballs (hairline in creamer)
- ___ 22P 9 1/2" RSP RM Floral Relish Tray with Red and White Rose with some Lavenders
- ___ 23P 8" RSP RM Bellflower Relish - Satin Finish
- ___ 24P RSP RM Oval Hair Receiver, Tassel or Laurel Band Decoration
- ___ 25P RSP RM 3 pc. Lot - Rose Individual Cake Plate, Satiny; 2 Berry Bowls with Florals
- ___ 26P Unmarked (Star Mold) Covered Syrup Pitcher, Floral with light Green Trim
- ___ 27P (5) RSP RM Creamers, all Floral (selling choice)
- ___ 28P RSP RM Daisies Cracker Jar Base Only
- ___ 29P Handpainted Bavarian Bowl with Acorns, signed Alberti
- ___ 30P 10 1/2" RS Germany Floral (Roses) Bowl

V1 - V31 CARNIVAL GLASS

- ___ V1. Imperial Octagon Sugar Lid Only - Mari.
- ___ V2. Imperial Waffle Block Punch Base Only - Mari.
- ___ V3. Imperial Hobstar Butter Lid Only - Pur. (scarce part; a bit silvery)
- ___ V4. Fenton Stretch Flared Handled Lemonade Glass - Celeste Blue / Clear Handle (very scarce)
- ___ 125 V5. **ROOSTER HATPIN - RED (RARE AND DESIRABLE; NICE IRID. AND BLACK PAINTED DECOR.)**
- ___ 110 V6. **ROOSTER HATPIN - AMBER (VERY SCARCE AND DESIRABLE; NICE IRID. AND DECOR.)**
- ___ 155 V7. **ROOSTER HATPIN - COBALT BLUE (VERY SCARCE COLOR; NICE IRID. AND DECOR.)**
- ___ 100 V8. Rooster Hatpin - Sapphire Blue (scarce; nice irid. and decor.)
- ___ 100 V9. Rooster Hatpin - Amy. (scarce; nice irid. and decor.)
- ___ 100 V10. Rooster Hatpin - Lt. Green (scarce; nice irid. and decor.)
- ___ 125 V11. Rooster Hatpin - White (scarce; nice irid. and decor.)
- ___ V12. Fenton Vintage Grape 3 ftd. Fernery - Amberina (scarce with nice irid.; has 2 hairlines)
- ___ V13. Fenton Two Row Open Edge Ruffled Hat Shape - Mari. / Vaseline (scarce; nice base color)
- ___ V14. Fenton Two Sided Two Row Open Edge Hat with Miller's Advert. - Mari.
- ___ 120 V15. Fenton Orange Tree Standard Flared Mug - Lt. Amy. / Mari. (very scarce color - sorta Horehound)
- ___ V16. Fenton Covered Dresser Jar - Mari. (scarce item)

- ___ V17. Fenton Squatty Perfume Bottle and Stopper - Mari. (base cracked)
- ___ V18. 4" Tall Odd Beaded Swirl Handled Mug, Enamelled 'Souvenir, Gettysburg' - Smoke Flash
- ___ V19. 6" Enamelled Perfume Atomizer (no fitting or bulb) - Clear / Iridized (very attractive; super decoration)
- 550 V20. **9 1/2" N FRUIT AND FLOWERS LARGE RUFFLED BOWL WITH BASKETWEAVE EXTERIOR - ICE GREEN (RARE AND VERY DESIRABLE; GETTING TOUGH TO FIND)**
- ___ V21. 9 1/2" N Wild Strawberry Large Ruffled Bowl with Basketweave Exterior - Green (scarce item; nice color and irid.)
- ___ V22. N Graceful Ruffled Vase - Pur. (scarce and underpriced; nice color)
- ___ V23. N Three Fruits domed Ruffled Bowl with Vintage and Basketweave Exterior - Mari. (nice color and irid.)
- 125 V24. N G & C Handled Bon Bon with Basketweave Exterior - White (very rare item; has small flake on inside edge)
- 600 V25. **N ROUND BUSHEL BASKET - ELEC. BLUE (SUPER EXAMPLE; HAS TO BE ONE OF THE BEST!)**
- ___ V26. Imperial Lustre Rose Handled Spooner - Pur. (scarce item; nice color and irid.)
- ___ V27. 6 1/2 - 7" Tall Imperial Flute and Cane Milk Pitcher - Dk. Mari. (very rare item for this pattern; nice color and irid.)
- ___ V28. 12" Heisey Panelled Oblong Relish Tray - Lt. Mari. (signed with Diamond H; nice irid.)
- ___ V29. U.S. Glass Unlisted Individual Creamer - Lt. Mari. (very unusual; wish I knew the pattern)
- ___ V30. **DUGAN SIX PETALS TRI-CORNERED BOWL - PUR. (HAS ABSOLUTELY SUPER IRID. AND GREAT DETAIL; ONE OF THE NICER EX-AMPLES)**
- ___ V31. Dugan Puzzle 2 Handled Round Stemmed Bon Bon - Blue (nice color and irid.; scarce in this color)

VICTORIAN COLORED GLASS

- ___ V32. N G & C Powder Jar Base Only - Custard / Nutmeg (very scarce; where's the lid?)
- ___ V33. N G & C Breakfast Open Sugar - Custard / Nutmeg (scarce; pretty good decor.)
- ___ V34. (3) Tartentum Victorian Tumblers - Custard (selling so much each; no decor.)
- ___ V35. **N GENEVA 3 FTD. TOOTHPICK HOLDER - CUSTARD / GREEN - NUTMEG (VERY SCARCE; NICE DECOR.)**
- ___ V36. Jefferson Glass Co. Ribbed Drape Decorated Toothpick Holder - Custard / Decor. (scarce with really nice decor.)
- ___ V37. Heisey Ring Band Toothpick Holder - Custard / Gold (signed; pretty nice gold decor.)
- ___ V38. Heisey Ring Band Stemmed Jelly Compote with Enamelled Floral Interior - Custard / Decor. (very scarce item; pretty nice decor.)
- ___ V39. U.S. Glass Jewelled Vermont Finger Candlestick - Custard / Decor. (scarce; super decor.)
- ___ V40. U.S. Glass Delaware Breakfast Creamer - Custard / Pink Decor. (very scarce; nice decor.)
- ___ V41. U.S. Glass Delaware Oval Sauce - Custard / Green Decor. (very scarce; nice decor.)
- ___ V42. U.S. Glass Delaware Small Ring Tray - Custard / Blue Decor. (very scarce; nice decor.)
- ___ V43. N Chrysanthemum Sprig Spooner - Custard / Decor. (signed in script; scarce with super decor.)
- ___ V44. N Double Loop Open Breakfast Sugar - Custard / Nutmeg (scarce item; pretty nice Nutmeg decor.)
- ___ V45. N Geneva Stemmed Round Jelly Compote - Custard / Decor. (scarce; super decor.)

- ___ V46. N Geneva ftd. Spooner - Custard / Decor. (scarce; super decor.)
- ___ V47. N Geneva Tumbler - Custard / Decor. (scarce pretty nice decor.)
- ___ V48. N Geneva ftd. Banana Boat - Crystal / Green Decor. (unusual with blue painted floral decor.)
- ___ V49. N S Repeat Tumbler - Blue Opal. (opal. at edge)
- ___ V50. **N LEAF MOLD WATER PITCHER - CASED "VASA MURRHINA" CRANBERRY (SUPER, SUPER ITEM; PERFECT WITH GREAT COLOR)**
- ___ V51. **N LEAF MOLD HANDLED SYRUP JUG - VASE-LINE SPATTER (SHINY) (ABSOLUTELY SUPER ITEM; GREAT COLOR AND PERFECT)**
- ___ V52. N Leaf Mold Salt Shaker - Blue Frosted (very scarce item; tough to find)
- ___ V53. N Royal Ivy Rose Bowl - Rainbow Cracquelle (very scarce; great color; small flake on edge)
- ___ V54. N Royal Ivy Toothpick Holder - Rubina (very scarce; great color)
- ___ V55. **N LEAF UMBRELLA SUGAR SHAKER - CRANBERRY SPATTER (RARE AND EXTREMELY DESIRABLE; GREAT COLOR AND PERFECT)**
- ___ V56. **N LEAF UMBRELLA SUGAR SHAKER - LEMON CASED (VERY SCARCE AND VERY DESIRABLE; NICE COLOR AND PERFECT)**
- ___ V57. N Leaf Umbrella Powder Base Only - Mauve (tough part; needs a metal lid)
- ___ V58. N Leaf and Beads ftd. Rose Bowl - Green Opal. (nice opal.)
- ___ V59. N Beaded Cable Variant 3 ftd. Straight Side Crimped Edge Rose Bowl - Blue Opal. (odd mold shape)
- ___ V60. **N OPALESCENT COINSPOT THREE TIER TANKARD WATER PITCHER - GREEN OPAL. (RARE ITEM; GREAT COLOR AND OPAL.)**
- ___ V61. Jewelled Heart Creamer - Green Opal. (nice opal.)
- ___ V62. N Alaska Creamer - Blue Opal. (nice opal.)
- ___ V63. (2) N Poinsettia Blown Mold Tumblers - Clear Opal. (selling choice; nice opal.)
- ___ V64. N Netted Oak Sugar Shaker - Milk Glass / Goofus (perfect; fair decor.)
- ___ V65. **N EVERGLADES SALT SHAKER - EXPERIMENTAL PURPLE SLAG (EXTREMELY RARE COLOR VARIATION FOR THIS PATTERN)**
- ___ V66. N Royal Ivy Salt Shaker - Rubina (scarce; great color)
- ___ V67. Buckeye (or Model Flint) Reverse Swirl Salt Shaker - Speckled Cranberry (rare item; nice color)
- ___ V68. N Daisy and Fern Ruffled Rose Bowl - Cranberry Opal. (scarce)
- ___ V69. (2) N Panelled Sprig Enamelled Decorated Tumblers - Cranberry (selling choice; very attractive)
- ___ V70. N Hobnail Town Pump Novelty - Blue Opal. (scarce and very desirable; signed in script; nice opal.)
- ___ V71. N Spanish Lace Tumbler - Cranberry Opal. (scarce)
- ___ V72. N (Indiana, Pa.) Quilted Phlox Sugar Shaker - Blue Opaque (very scarce; nice opaque color)
- ___ V73. N (Indiana, Pa.) Quilted Phlox Sugar Shaker - Green Cased (very scarce; nice color)
- ___ V74. N Spanish Lace Wide Waist Variant Sugar Shaker - Clear Opal. (scarce)
- ___ V75. Dugan / Diamond "Ring Band" Enamelled Decorated Bulbous Water Pitcher - Ruby (D/D Book pg. 85, fig. 205; scarce; nice decor.)
- ___ V76. 4 1/2" Dugan / Diamond Stippled Tri-Cornered Vase, with no Stippling - Irid. Aqua with Swirls (very unusual item; great color and really neat)
- ___ V77. Dugan / Diamond Venetian Line Tri-Cornered Rose Bowl - Blue Graniteware with Frit (scarce; nice color and decor.)
- ___ V78. Dugan / National Diamond Spearhead Handled Mug - Green Opal. (nice opal.)

- ___ V79. (2) Dugan / National Diamond Spearhead Toothpick Holders - Green Opal. (selling choice; both have nice opal.)
- ___ V80. **9" TALL, 4 1/2" BASE N'WOOD (OR W.Va.) POLKA DOT Kerosine Lamp - CRAN. OPAL. (VERY RARE ITEM; VERY DESIRABLE; SMALL BRUISE ON BASE OF FONT)**
- ___ V81. **11" TALL BUCKEYE REVERSE SWIRL LAMP FONT ON METAL TREE TRUNK STAND - CRAN. OPAL. (VERY RARE; GREAT COLOR AND ALL ORIGINAL - NICE!)**
- ___ V82. **8 1/2 - 9" TALL, 4 1/2" BASE BUCKEYE REVERSE SWIRL Kerosine Lamp - VASELINE OPAL. (RARE, DESIRABLE; NICE COLOR AND OPAL.; NO TOP FIXTURE)**
- ___ V83. Unusual 8 1/2" Tall Blown Iris Ruffled Gas Shade - Cran. Opal. (very rare item; haven't seen another; has tiny flake on inside edge)
- ___ V84. 3 1/2" Tall, 3 1/4" Base Buckeye Big Windows Handled Finger Lamp - Clear Opal. (rare item; perfect with really nice opal.)
- ___ V85. **9" TALL, 5" BASE CONSOLIDATED LAMP AND GLASS FLORETTE Kerosine Lamp - YELLOW CASED (RARE ITEM IN A RARE COLOR; NICE AND PERFECT)**
- ___ V86. **9" TALL, 5" BASE HOBBS (U.S. GLASS) SNOW-FLAKE Kerosine Lamp - BLUE OPAL. (RARE; HAS METAL CONNECTOR; TINY FLAKE ON FONT; NICE)**
- ___ V87. 5" Tall, 4 1/4" Base Hobbs (U.S. Glass) Snowflake Pedestaled Finger Lamp - Blue Opal. (very rare; has hairline at handle)
- ___ V88. 3" Tall, 3" Base Hobbs (U.S. Glass) Snowflake Flat Base Finger Lamp - Cran. Opal. (rare; has hairline at handle)
- ___ V89. 7" Jefferson Iris Meander Flat Plate - Blue Opal. (super opal.)
- ___ V90. **HOBBS OPALESCENT SEAWEED SQUARE BARBER (OR BITTERS) BOTTLE - CRAN. OPAL. (SUPER, SUPER ITEM; VERY DESIRABLE WITH GREAT OPAL.)**
- ___ V91. **W. Va. GLASS CO. OPALESCENT FERN SQUARE BARBER BOTTLE - BLUE OPAL. (RARE ITEM; SUPER OPAL. AND EXTREMELY DESIRABLE)**
- ___ V92. (Maker ?) Enamelled Floral Barber Bottle - Crystal "Lime" Green (scarce; great color)
- ___ V93. (Maker ?) Enamelled Seaweed Barber Bottle - Crystal Blue (scarce; nice item)
- ___ V94. Westmoreland (?) Floral Enamelled Barber Bottle - Cran. Flash (scarce; nice decor.)
- ___ V95. 5 1/2" Tall Decor Swirl Decorated Barber Bottle - Crystal (unusual item)
- ___ V96. **FENTON VINTAGE GRAPE 3 FTD. FERNERY - CHOCOLATE GLASS (VERY SCARCE; GREAT DARK COLOR AND PERFECT)**
- ___ V97. **FENTON WATERLILY AND CATTAIL TUMBLER - AMY. OPAL. (VERY SCARCE ITEM IN THIS COLOR; NICE OPAL.)**
- ___ V98. 9" Fenton Waterlily and Cattail Large Ruffled Master Berry Bowl - Amy. Opal. (scarce; nice opal.)
- ___ V99. Fenton Waterlily and Cattail Ruffled "Toothpick Holder" - Green Opal. (scarce; great opal.)
- ___ V100 **HEISEY LOCKET ON CHAIN SPOONER - RUBY FLASH / GOLD (A FANTASTIC EXAMPLE OF ONE OF THE RAREST PATTERNS; A SUPER, SUPER ITEM)**
- ___ V101 **HEISEY PRINCE OF WALES PLUMES TOOTH-PICK HOLDER - RUBY SATINED (VERY RARE; SUPER RUBY COLOR; SIGNED AND PERFECT)**
- ___ V102 Tarentum Georgia Gem ftd. Toothpick Holder - Crystal Green (scarce; nice color)
- ___ V103 Duncan #28 or Teepee Toothpick Holder - Crystal (nice quality)
- ___ V104 Odd Barrel Shaped Toothpick Holder - Blue Opaque (unusual with nice color)
- ___ V105 **HOBBS OPALESCENT WINDOWS TOOTH-PICK HOLDER - BLUE OPAL. (SUPER EXAMPLE AND PERFECT TO THE TOP; NICE COLOR AND OPAL.)**
- ___ V106 Consolidated Pansy Toothpick Holder - Pink Opaque (scarce; nice color)
- ___ V107 Hobbs Hobnail Toothpick Holder - Crystal Vaseline (nice color)
- ___ V108 Consolidated Bulging Loops Toothpick Holder - Pink Opaque (scarce; damaged top)
- ___ V109 Hobbs Frances Ware Swirl Toothpick Holder - Amber Frosted (very scarce; small flake on top edge)
- ___ V110 **NEW ENGLAND (OR LIBBEY ?) VENETIAN DIAMOND TOOTH-PICK HOLDER - AMBERINA (RARE AND VERY DESIRABLE; GREAT COLOR)**
- ___ V111 **JEFFERSON SWIRLING MAZE TUMBLER - CRAN. OPAL. (VERY RARE ITEM; REALLY NICE COLOR AND OPAL.)**
- ___ V112 (2) Hobbs Opalescent Seaweed Tumblers - Cran. Opal. (selling choice; one has small bruise on edge; nice color and opal.)
- ___ V113 Hobbs Opalescent Windows Tumbler - Cran. Opal. (scarce; really nice color and opal.)
- ___ V114 Maker ? Spiral Optic (or Swirl) Tumbler - Cran. Opal. (nice color and opal.)
- ___ V115 **10 1/2" TALL N'WOOD (?) CHRYSANTHEMUM SWIRL VARIANT TANKARD WATER PITCHER - CRAN. OPAL. (ABSOLUTELY SUPER ITEM; SUPER RARE WITH GREAT COLOR AND OPAL. - WONDERFUL!)**
- ___ V116 2 1/8" Tall, 3 1/2" Diam. N'wood (?) Reverse Swirl Small Bowl (Berry Bowl ?) - Cran. Opal. (super color and opal; very scarce)
- ___ V117 N'wood (?) Chrysanthemum Swirl Small Bowl (Berry Bowl ?) - Cran. Opal. (really nice color and opal.; scarce)
- ___ V118 N Ribbed Opal. Lattice Celery Vase - Cran. Opal. (very scarce; great color and opal.; attractive)
- ___ V119 Buckeye Big Windows Master Berry Bowl - Cran. Opal. (very scarce; nice color and opal.; has small chip on top edge)
- ___ V120 **13 - 13 1/2" HOBBS (?) OPALESCENT LATTICE TANKARD WATER PITCHER - CRAN. OPAL. FROSTED (SUPER RARE AND PERFECT; GREAT COLOR AND OPAL. WITH NICE POLISHED PONTIL)**
- ___ V121 9 1/2" Jefferson Glass Co. (?) Swirling Maze Crimped Edge Ruffled Bowl - Cran. Opal. (very scarce; great color and opal.)
- ___ V122 Hobbs Optic Handled Wine Decanter and Stopper - Rubina (scarce item; great color and quality)
- ___ V123 **HOBBS OPTIC SQUATTY SUGAR SHAKER - RUBINA (VERY SCARCE; GREAT COLOR AND QUALITY - NICE!)**
- ___ V124 **10" NAILSEA PULLED LOOP LAY DOWN BOTTLE - CRAN. OPAL. (VERY RARE ITEM; TOUGH TO FIND; NICE COLOR)**
- ___ V125 **U.S. GLASS DELAWARE CRUET AND STOPPER - CRAN. FLASH / GOLD (EXTREMELY RARE ITEM; ONE OF THE RAREST ITEMS IN THE AUCTION; HAS REALLY NICE GOLD DECOR.)**
- ___ V126 **U.S. GLASS DELAWARE TOOTH-PICK HOLDER - CRAN. FLASH / GOLD (VERY SCARCE WITH GREAT GOLD DECOR.)**
- ___ V127 U.S. Glass Delaware Toothpick Holder - Green / Gold (very scarce; has great gold decor.)

- ___ V128 U.S. Glass Delaware Covered Butter Dish - Cran. Flash / Gold (very scarce item; has great gold and perfect)
- ___ V129 U.S. Glass Delaware Creamer - Cran. Flash / Gold (scarce; really nice gold decor.)
- ___ V130 U.S. Glass Delaware Spooner - Cran. Flash / Gold (scarce; really nice gold decor.)
- ___ V131 U.S. Glass Delaware Sugar with No Lid - Cran. Flash / Gold (has no lid; nice gold decor.)
- ___ V132 Pair 2 1/2" Tall Opalescent Swirl Salt and Pepper Shakers - 1 Cran. Opal., 1 Blue Opal. (very scarce pair; very attractive; selling as a pair)
- ___ V133 Pair 3 1/2" Tall N Reverse Swirl Ball Shaped Salt and Pepper Shakers - Blue Opal. (scarce; nice color and opal.)
- ___ V134 Pair Consolidated Guttate Salt and Pepper Shakers - Pink Cased (very scarce; a very attractive pair)
- ___ **V135 N REVERSE SWIRL SUGAR SHAKER - CRAN. OPAL. (RARE AND HAS SUPER COLOR AND SUPER OPAL.; REALLY DESIRABLE!)**
- ___ **V136 N RIBBED OPAL. LATTICE SUGAR SHAKER - FROSTED CRAN. OPAL. (RARE AND VERY DESIRABLE; TOUGH WHEN FROSTED)**
- ___ **V137 N RIBBED OPAL. LATTICE SUGAR SHAKER - CRAN. OPAL. (VERY SCARCE AND VERY DESIRABLE; GETTING TOUGHER!)**
- ___ **V138 N SPANISH LACE WIDE WAIST SUGAR SHAKER - CRAN. OPAL. (VERY SCARCE; REALLY NICE COLOR AND OPAL. - NICE!)**
- ___ **V139 N OPALESCENT COINSPOT WIDE WAIST SUGAR SHAKER - CRAN. OPAL. (SCARCE; VERY DESIRABLE; NICE COLOR AND OPAL.)**
- ___ **V140 N OPALESCENT COINSPOT RINGNECK SUGAR SHAKER - CRAN. OPAL. (SCARCE; DESIRABLE; NICE COLOR AND OPAL.)**
- ___ V141 N Ringneck Sugar Shaker - Cran. Spatter (scarce; one of the nicer examples)
- ___ V142 Hobbs Acorn Salt Shaker - Pink Opaque (nice color)
- ___ V143 Pair Hazel Atlas "Waffle Block" Salt and Pepper Shakers - Dk. Mari. Carnival (rare and very unusual to find iridized; a really neat pair)
- ___ V144 (6) L.G. Wright 97-3 Opal. Dot (Coin Spot) Tumblers - Cran. Opal. (nice color; selling so much each for set)
- ___ **V145 12 1/2" INVERTED THUMBPRINT COVERED STRAW JAR - CRANBERRY (EXTREMELY RARE ITEM; HARDLY EVER FOUND FOR SALE; NICE COLOR AND PERFECT)**
- ___ **V146 15 1/2" EUROPEAN TALL WINE OR BAR BOTTLE WITH FIGURAL WOMAN SILVER PLATE STOPPER - CRANBERRY (FANTASTIC ITEM; GREAT QUALITY; SILVER SPOUT HAS ENGLISH TRADEMARKS; HAS PONTIL - NEAT!)**
- ___ V147 11 - 12" Dugan / Diamond (?) Floral Enamelled Daisy Decorated Bulbous Water Pitcher - Cranberry (very unusual mold; nice decor.; small chip on top edge)
- ___ V148 N'wood (?) Enamelled Floral 7 pc. Tankard Water Set - Crystal Amy. (scarce color; nice floral decoration; very attractive)
- ___ V149 Consolidated Florette Silver Plated Covered Sugar Bowl - Red Satin (very scarce; nice color with silver plate lid and rim which needs to be attached)
- ___ **V150 INDIANA (GREENTOWN) CORD DRAPERY SYRUP JUG - CHOCOLATE (RARE AND VERY DESIRABLE; NICE COLOR AND QUALITY - NOT OFTEN FOUND)**
- ___ V151 Indiana (Greentown) Cord Drapery 5 pc. Berry Set - Crystal (scarce pattern; 2 small bowls chipped)
- ___ V152 Greentown Shuttle Punch Cup - Chocolate (very scarce; really nice color)
- ___ V153 Greentown Shuttle Tumbler - Chocolate (very scarce; nice color)
- ___ V154 (2) Greentown Serenade Handled Mugs - 1 Nile Green, 1 Blue Slag (selling choice)
- ___ **V155 BEAUMONT GLASS CO. ACORN HANDLED SYRUP JUG - EMERALD GREEN (RARE AND VERY DESIRABLE, ESPECIALLY IN THIS COLOR; VERY ATTRACTIVE)**
- ___ **V156 CONSOLIDATED GUTTATE HANDLED SYRUP JUG - PINK CASED (RARE AND VERY NICE COLOR; LID IS MISSING)**
- ___ **V157 HOBBS (OR BUCKEYE) RIBBED OPAL. LATTICE HANDLED SYRUP JUG - BLUE OPAL. (RARE AND VERY DESIRABLE; NICE COLOR AND OPAL.; HAS MANUF. CHECK AT HANDLE)**
- ___ V158 Hobbs Ringneck Coin Spot Handled Syrup Jug - Blue Opal. (scarce; nice color and opal.; perfect)
- ___ V159 Hobbs (?) Inverted Thumbprint Tapered Handled Syrup Jug - Crystal Amber (scarce; nice color)
- ___ V160 Hobbs (?) Bulbous Tall Coin Spot Handled Syrup Jug - Clear Opal. (scarce; nice opal. and attractive applied handle)
- ___ V161 Enamelled Decorated Scroll and Net Handled Syrup Jug - Milk Glass (nice decor.; has no spout fixture)
- ___ V162 Press Glass Heart with Thumbprint Handled Syrup Jug - Crystal (scarce and desirable; pressed pattern; pinhead on handle)
- ___ V163 Unusual European Cut Glass Handled Syrup Jug - Crystal (nice sawtooth and panel design; maker?)
- ___ V164 N Nine Panel Mold Coin Spot Sugar Shaker - Clear Opal. (no lid; a bit cloudy)
- ___ **V165 W. Va. GLASS CO. MEDALLION SPRIG SUGAR SHAKER - AMBER (VERY RARE COLOR FOR THIS SCARCE PATTERN; NOT OFTEN FOUND)**
- ___ V166 Big Horseshoe Sugar Shaker - Amber (scarce)
- ___ V167 Hobbs Coloratura Series Inverted Thumbprint Sugar Shaker - Crystal Blue (nice color; scarce; top needs to be rethreaded)
- ___ V168 Late Bohemian Etched Floral Sugar Shaker - Ruby Flash (different; nice color)
- ___ V169 Tarentum Panelled Teardrop Sugar Shaker - Green Custard (scarce; nice color; has large chip on threads, covered by lid)
- ___ V170 Challinor's Forget Me Not Sugar Shaker - Blue Opaque (scarce and desirable; nice opaque color)
- ___ V171 Belleware Type Enamelled Floral Decorated Sugar Shaker - Decor. Milk Glass (scarce; a Wavecrest type item; nice decor.)
- ___ V172 Enamelled Blue Bell Decorated Sugar Shaker - Decor. Milk Glass (nice decor.; sorta looks early and primitive)
- ___ V173 N Wide Waist Decorated Sugar Shaker - Decor. Milk Glass (pretty good decor.)
- ___ V174 2 1/2" Wavecrest Panelled Base Enamelled Decorated Kitten in Bushes Salt Shaker - Decor. Milk Glass (scarce item; has nice decor. of cat's head)
- ___ **V175 5" TALL, 8 - 8 1/2" DIAM. C.F. MONROE CO. NAKARA LARGE ENAMELLED ROSE DECORATED COVERED DRESSER JAR - PINK WITH GREEN DECOR. (A SUPER, SUPER ITEM WITH GREAT DECORATION; REALLY, REALLY NICE)**
- ___ V176 7 1/2" Hobbs Gonterman Swirl Deep Round Crimped Edge Bowl - Amber / Opal. Base (scarce item; very attractive color and opal.)
- ___ **V177 EXTREMELY RARE 1893 COLUMBIAN WORLD'S EXPOSITION SWIRL HANDLED DINNER BELL - CLEAR / FROSTED HANDLE (POSSIBLY HOBBS; A SUPER UNUSUAL ITEM; REALLY NICE!)**
- ___ V178 Hobbs Hexagon Block Tumbler with Etched Floral Trim - Amber Stained (nice color)
- ___ V179 I.O.U. Tumbler - Crystal Vaseline with Gold Trim (scarce color with gold decor.)

- ___ V180 **HOBBS NEOPOLITAN LINE 5 PC. SWIRL WATER SET - FROSTED BLUE SATIN (SUPER ATTRACTIVE SET; HAS A POLISHED PONTIL ON PITCHER; VERY RARE)**
- ___ V181 5 1/4" Tall Hobbs Opalescent Diamonds Bulbous Milk Pitcher - Blue Opal. (scarce; has polished pontil)
- ___ V182 Buckeye Lattice (Bubble Lattice) Sugar Base Only - Blue Opal. (nice opal.; who has the lid?)
- ___ V183 Jefferson Glass Co. Old Man Winter Small (#135) Handled Basket - Blue Opal. (nice opal.; scarce and desirable)
- ___ V184 (?) Acorn and Leaf Spoon Holder or Vase - Cobalt Blue Opal. (really nice color; very scarce; maker ?)
- ___ V185 (4) U.S. Glass Triple Triangle Stemmed Goblets - Ruby Flash (nice color; selling so much each for set)
- ___ V186 U.S. Glass (pattern ?) Celery Vase - Ruby Flash (nice color)
- ___ V187 U.S. Glass (pattern ?) Covered Sugar Bowl (nice)
- ___ V188 U.S. Glass (pattern ?) Covered Butter Dish - Ruby Flash (base is damaged, lid is OK)
- ___ V189 9 1/2" Tall Fenton Knotted Beads Swung Vase - Crystal Ruby / Amberina (scarce color for this item; nice)
- ___ V190 6 1/2" Tall, 6 1/2" Top Diam. Imperial Plain Panelled Flared Vase - Flame Opaque (signed with Iron Cross; super, super color)
- ___ V191 4 1/2" Tall Fenton #45 Assortment No. 1923 Opal. Swirl Tulip Violet Jack in the Pulpit Vase - Cran. Opal. (1930's; scarce)
- ___ V192 Piasa Bird 3 ftd. Tri-Cornered Crimped Edge Bowl - Clear Opal. (light opal.; scarce pattern and shape)
- ___ V193 N Pearls and Scales Short Stemmed Ruffled Compote - Clear Opal. with Cranberry Stained Border (attractive item; nice trim)

- ___ V194 Albany Ind. Glass Co. Wreath and Shell 3 ftd. Lady's Spittoon - Vaseline Opal. (very scarce with excellent opal. - nice!)
- ___ V195 **ALBANY IND. GLASS CO. DOLPHIN AND HERONS STEMMED FLARED COMPOTE OR CARD TRAY - VASELINE OPAL. (VERY SCARCE PATTERN WITH NICE COLOR AND GREAT OPAL.)**
- ___ V196 8" Dugan / Diamond #5122 Tall 4 Sided Opal. Swirl Vase - Blue Opal. (nice color and opal.; has glued hole on base)
- ___ V197 2 1/2" Tall European (?) Ribbed Witch's Kettle Novelty Toothpick Holder - Pur. Slag (unusual; has wire handle - cute)
- ___ V198 2" Tall European (?) Long Square Handled Floral Match Holder - Pur. Slag (nice color; has small chip on edge)
- ___ V199 Press Glass Bird and Strawberry Handled Punch Cup - Crystal (scarce pattern)
- ___ V200 Cambridge Inverted Feather Covered Cracker Jar - Crystal (scarce and collectible)
- ___ V201 U.S. Glass Minnesota 3 Handled Toothpick Holder - Crystal (no decor.)
- ___ V202 3" Tall U.S. Glass (?) Patterned Stemmed Cordial - Crystal
- ___ V203 4" Tall U.S. Glass (?) Patterned Stemmed Wine Glass - Crystal

For 1994 Auction results, send \$2.00 and a SASE to:

Valerie Carlsen
120 Clarion Dr., Whitesboro, NY 13492
(315) 768-7031

Please include date of auction.

IMPORTANT! PLEASE RESPOND! Due to rising postage costs in 1995, if you wish to remain on our mailing list, PLEASE return the mailing label on the envelope along with a check or money order for \$2.00 as soon as possible! Those not responding by 1/1/95 will be removed from the Burns Auction Service Mailing List. If your address label is incorrect, please fill out the form below.

Return with check or money order for \$2.00 to:

Burns Auction Service Mailing List

c/o Keuka Printing
P.O. Box 5
Hammondsport, NY 14840

Make checks payable to Keuka Printing.

Use this form for new or corrected address. Please print.

NAME	<input type="text"/>
ADDRESS	<input type="text"/>
CITY	<input type="text"/>
STATE	<input type="text"/> ZIP <input type="text"/>
PHONE#	<input type="text"/>

Area(s) of interest:

