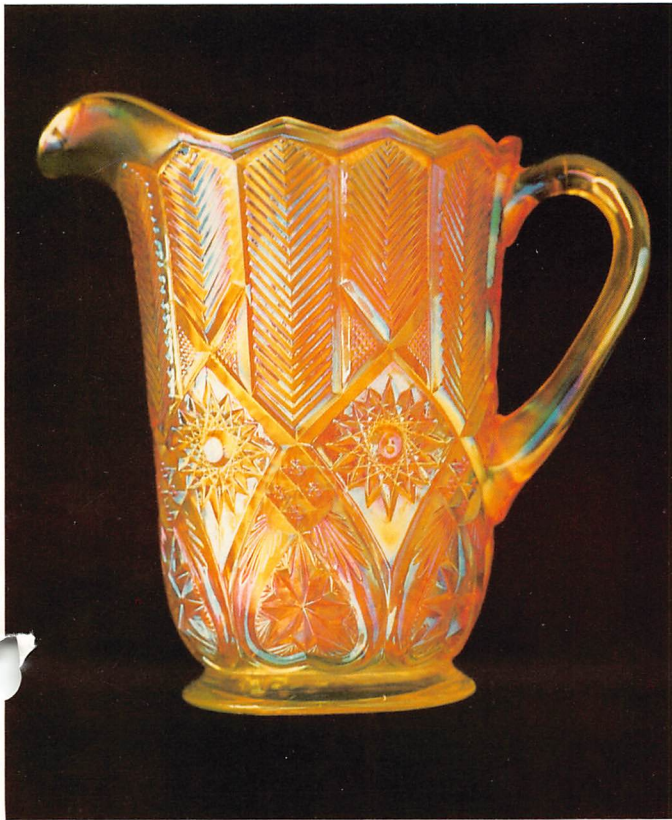




AUCTION SERVICE



1994 Mid Atlantic Carnival Glass Jamboree Auction

**Friday & Saturday,
October 14 & 15, 1994**

Friday Preview 5 - 7 pm, Auction 7 pm

Saturday Preview 8 - 10 am, Auction 10 am

at the

Best Western - Venice Inn

431 Dual Highway (US Rte. 40 E)

Hagerstown, MD 21740

1-800-2-VENICE or (301) 733-0830



Well, we've got a WHOPPER here for ya... We're combining the collections of Gladys Weatherford from Tennessee, Carl Rote and Mr. & Mrs. Henry Yeska, both from Pennsylvania, as well as a couple extra consignments making for one great event. This auction boasts some super rarities and many, many items with fantastic color and iridescence.

The auction will be held in conjunction with the Mid Atlantic Carnival Glass Jamboree which runs from Thursday, October 13th thru Saturday the 15th. It's always been a happening in our hobby and this year's get-together should be no different - so make your plans to attend - NOW!

The Best Western - Venice Inn will host the evnt. The motel is located on Rt. 40 (Dual Hwy.) just on the east side of downtown. You may make your reservations by calling the motel direct at (301) 733-0830 or use their toll free line 1-800-2-VENICE. For further information you can call Randy Smith at (717) 755-2083. Hope to see ya there!

Mail bids due by Thursday, October 13, 1994.

Mail Bids honored under the following conditions:

1. No deposit required. Bidders will take full responsibility to honor any and all bids we execute for them. Payment in full plus postage and handling required after notification and before we ship any item to them.
2. **Items are bid on in perfect condition with average or above average iridescence OR as listed in the brochures. Bids will not be carried out when damage on an item has been found during the auction.**
3. Successful bidders will be notified by collect call from the auctioneer (so be sure to include phone number).
4. Phone inquiries about the glass or any other questions are welcome.
5. All non-successful bidders will receive a result summary in the mail. Results of all bids will be provided.
6. If you have some other person at the auction bidding for you, they must pay for the item before taking it.
7. Mail bids due by Thursday, October 13, 1994.

Burns Auction Service

Tom Burns
109 E. Steuben St.
Bath, New York 14810
(607) 776-7942

Bill Richards
44 Water St.
Poland, Ohio 44514
(216) 757-2001

Bill Richards III
524 Poland Ave.
Struthers, Ohio 44471
(216) 755-2620

- | | | | |
|------------------------|--|-----------------------|---|
| _____ 1. | Westmoreland Estate Tall Bud Vase - Gold Flash | _____ 14. | Pair M'burg Ohio Star Salt and Pepper Shakers - Crystal (super scarce pair - not many around) |
| _____ 2. | U. S. Glass 1908 Shriners Champagne Glass - Ruby Flash (super condition) | <u>1300</u> _____ 15. | M'BURG OHIO STAR FLARED VASE - PUR. (RARE AND VERY DESIRABLE; HAS TO BE ONE OF THE NICER EXAMPLES WE'VE EVER SOLD) |
| _____ 3. | Fenton Orange Tree Standard Flared Mug - Cobalt Blue (odd light silver irid.) | <u>2550</u> _____ 16. | 8 1/2" X 4" BASE X 7" ACROSS M'BURG FLUTE SHORT SWUNG FLARED VASE - BLUE (EXTREMELY RARE AND PERFECT - A REAL NICE EXAMPLE; GREAT COLOR) |
| _____ 4. | Fenton Orange Tree Whimsey Stemmed Ruffled Sherbet - Mari. (rare shape) | _____ 17. | M'BURG BULLSEYE AND LOOP SWUNG VASE - AMY. (RARE; NICE COLOR AND IRID.) |
| _____ 5. | Fenton Butterfly and Fern Tumbler with manuf. ground Base - Green (nice color) | _____ 18. | M'burg Swirl Hobnail Swung Vase - Pur. (very scarce; nice color, irid. and perfect) |
| _____ 6. | Dugan Stork and Rushes Tumbler with Beaded Top - Lt. Blue / Mari. (odd light blue tinge to base) | _____ 19. | 7 1/2 - 8" M'BURG LETTERED COURTHOUSE 6 RUFFLED BOWL - AMY. (SUPER COLOR AND RADIUM IRID.; GREAT DETAIL; NICE) |
| _____ 7. | Dugan Grape Delight 6 ftd. Ruffled Rose Bowl - Pur. (nice color and irid.) | _____ 20. | M'BURG COUNTRY KITCHEN CREAMER - ELEC. GREEN (UNBELIEVABLE ITEM; GREAT BLUE IRID.; SUPER!) |
| _____ 8. | Imperial Interior Wide Panel "Plain Jane" Handled Flower Basket - Clam. (nice irid.) | _____ 21. | M'BURG HOBSTAR AND FEATHER HANDLED SPOONER - ELEC. GREEN (ANOTHER UNBELIEVABLE ITEM WITH GREAT BLUE IRID.; SUPER, SUPER!!!) |
| <u>14,000</u> _____ 9. | N Leaf and Beads ftd. Rose Bowl with Stippled Rays Interior - Green | _____ 22. | M'burg Diamond 5 pc. Water Set - Dk. Mari. (scarce; really nice color and irid.) |
| <u>7000</u> _____ 10. | M'BURG FEATHER AND HEART HANDLED WATER PITCHER - MARI. / VASELINE (ABSOLUTELY UNBELIEVABLE ITEM - WITH GREAT BASE GLASS COLOR AND RADIUM IRID.; 1st VASELINE PITCHER REPORTED; SUPER, SUPER, SUPER !!!) | _____ 23. | M'burg Zig Zag Bowl with Ruffled Crimped Edge - Mari. (scarce; radium; has small bruise on base) |
| _____ 11. | M'BURG FEATHER AND HEART WHIMSEY SPITTOON MADE FROM A TUMBLER - MARI. (GREAT ITEM WITH SUPER IRID.; ANOTHER SUPER ONE OF A KIND!!!) | _____ 24. | M'BURG PEACOCK LARGE FLARED MASTER BERRY BOWL - GREEN (SUPER RADIUM FINISH; GREAT DETAIL; MAY HAVE A TINY PINHEAD) |
| _____ 12. | 5 1/2 - 6" M'BURG PEACOCK 6 RUFFLED SAUCE - AMY. (SUPER SCARCE; HAS NO BEE AND NO BEADS; SUPER RADIUM, REALLY NICE SHAPE) | <u>900</u> _____ 25. | M'BURG TROUT AND FLY 4 SIDED SQUARE BOWL - AMY. (EXTREMELY RARE SHAPE; NICE DETAIL; GREAT SATINY FINISH) |
| _____ 13. | M'BURG HOBNAIL TOP HAT SHAPED WHIMSEY MADE FROM THE ROSE BOWL - AMY. (WHAT A GREAT ITEM; ONE OF A KIND, GREAT SHAPE) | | |

26. **M'BURG TROUT AND FLY 6 RUFFLED BOWL - GREEN (RARE AND DESIRABLE; GREAT DETAIL; NICE SATINY FINISH)**
27. **8" M'BURG HANGING CHERRIES FLARED PLATE - DK. MARI. (VERY RARE ITEM; ABOUT AS MUCH A PLATE AS THEY CAN BE)**
28. Cambridge Inverted Feather Covered Cracker Jar - Green (rare; nice and desirable; base a bit silvery)
29. Cambridge Buzz Saw Large Size Cruet and Stopper - Mari. (rare; very desirable; stopper has small flake)
- 1250 30. **1 3/4" "BIRD OF PARADISE AND BOUQUET" HATPIN - DARK (EXTREMELY RARE - 1st EVER SEEN; NICE LARGE SIZE; GREAT IRID.; NEAT)**
31. Pastel Swan (Beaded Neck) - Pink
32. Pastel Swan (Beaded Neck) - Celeste Blue
33. Pastel Swan (Beaded Neck) - Clear Opal. (not Carnival; scarce)
34. Pastel Swan (Beaded Neck) - Lime Ice Green (scarce tint; nice irid.)
35. **PASTEL SWAN (FEATHERED NECK) - LT. AMBER (VERY SCARCE TINT; LIGHT IRID.; A TOUCHIE)**
36. Pastel Swan (Beaded Neck) - Pur. (very scarce; nice gold irid.; on bit light on head)
37. Pastel Swan (Beaded Neck) - Mari. (scarce color; tough to find)
38. European Covered Hen Butter Dish - Blue (scarce color)
39. Fenton Ribbed Interior Stemmed Ruffled Compote - Mari.
- 3600 40. **9" FENTON CONCORD GRAPE FLAT PLATE - AMY. (INCREDIBLE COLOR AND IRID.; A SUPER EXAMPLE AND VERY DESIRABLE)**
41. **9" FENTON ORANGE TREE FLAT PLATE - BLUE (SCARCE; SUPER RED AND BLUE HIGHLIGHTS; NICE STRETCH EFFECT)**
42. 9" Fenton Orange Tree with Trunk Flat Plate - White (super bright blue and yellow irid. - really nice)
43. 9" Fenton Orange Tree Flat Plate - Mari. (super bright irid. with red and blue highlights)
44. 6" Fenton Little Flowers Flat Plate - Dk. Mari. (very rare item; dark satiny finish)
- 6700 45. **9" FENTON THISTLE FLAT PLATE - MARI. (SUPER, SUPER RARE ITEM IN THIS COLOR; NICE SATINY FINISH; FROM THE SCHINESTUHL COLLECTION)**
46. **8 1/2 - 9" FENTON TWO FLOWERS SPATULA FTD. FLAT PLATE - MARI. (EXTREMELY RARE ITEM; NICE DARK COLOR AND SATINY FINISH)**
47. **9" FENTON STAG AND HOLLY SPATULA FTD. FLAT PLATE - MARI. (ANOTHER REALLY RARE ITEM; SUPER SATINY FINISH)**
48. 7" Fenton Horsehead Medallion Flat Plate - Mari. (very scarce; great color and detail - nice)
- 850 49. **9" FENTON SPECTOR'S DEPT. STORE / HEART AND VINE FLAT PLATE - MARI. (RARE AND DESIRABLE; GREAT COLOR ONE SIDE TO THE OTHER)**
50. **9" FENTON HEART AND VINE FLAT PLATE - BLUE (A SUPER, SUPER EXAMPLE; BRIGHT BLUE AND RED IRID. WITH GOLD HIGHLIGHTS)**
51. **9" FENTON HOLLY FLAT PLATE - AMY. (RARE AND AND VERY DESIRABLE; SUPER BRONZE FINISH - NICE)**
52. **9" FENTON HOLLY FLAT PLATE - BLUE (FANTASTIC BRIGHT SUPER IRID.; AN EXCELLENT EXAMPLE)**
53. 9" Fenton Holly Flat Plate - Dk. Mari. (super color and super, super irid.)
54. 9" Fenton Captive Rose Flat Plate - Amy. (rare; has silvery / gold irid.)
55. **9" FENTON LOTUS AND GRAPE FLAT PLATE - GREEN (SUPER SCARCE ITEM; NICE COLOR AND IRID.; GOLD HIGH-LIGHTS)**
56. 9" Fenton Leaf Chain Flat Plate - Green (very scarce; nice gold highlights)
57. 9" Fenton Leaf Chain Flat Plate - White (scarce; super multi-colored irid.; really nice)
58. 9" Fenton Three Fruits Flat Plate - Green (scarce; irid. a bit silvery / red)
59. Fenton Dragon and Lotus Ice Cream Shaped Bowl - Amber (scarce base color with great irid.)
- 2500 60. **8 1/2 - 9" FENTON TWO FLOWERS SPATULA FTD. RUFFLED BOWL - RED (EXTREMELY RARE AND DESIRABLE; GREAT RED AND HAS GOLD HIGHLIGHTS; A SUPER ITEM)**
61. **FENTON PEACOCK AND GRAPE SPATULA FTD. RUFFLED BOWL - RED (ANOTHER RED RARITY; GREAT COLOR AND LOOKS RED)**
62. Fenton Fluffy Peacock Tumbler - Amy. (scarce; fantastic irid.)
63. **6" FENTON LIONS ROUND FLARED BOWL - BLUE (EXCELLENT, EXCELLENT EXAMPLE; SUPER COLOR, DETAIL AND IRID.)**
64. Fenton Iris Stemmed Ruffled Compote - Blue (rare color for this item; nice gold irid.)
- 2000 65. **FENTON G & C / PERSIAN MEDALLION LARGE SIZE FTD. FRUIT BOWL - GREEN (UNBELIEVABLE ITEM; 1st WE'VE HAD A CHANCE TO SELL; SUPER, SUPER COLOR AND IRID.)**
66. Fenton Butterfly and Berry 7 pc. Water Set - Mari. (scarce; super satiny finish)
67. Fenton Butterfly and Berry 4 pc. Table Set - Mari. (scarce; nice satiny finish)
68. Fenton Butterfly and Berry 6 pc. Berry Set - Blue (scarce; nice color and irid.)
69. **FENTON THISTLE FTD. BANANA BOAT - BLUE (VERY SCARCE AND VERY DESIRABLE; HAS ELEC. BLUE HIGHLIGHTS)**
- 900 70. **7" FENTON 1911 BPOE ELKS ICE CREAM SHAPED BOWL - BLUE (RARE AND VERY DESIRABLE; SUPER DETAIL AND SUPER IRID.)**
71. **FENTON PANTHER FTD. RUFFLED MASTER BERRY BOWL - BLUE (VERY SCARCE COLOR; HAS EXCELLENT MULTI-COLORED IRID.)**
72. (3) Fenton Panther ftd. Ruffled Sauces - Blue (scarce; they are all different; selling choice)
73. 8 1/2" Fenton Orange Tree Ruffled Bowl - White (nice color and irid.)
74. **9" FENTON PEACOCK AT THE URN FLAT PLATE - BLUE (VERY SCARCE; REALLY NICE MULTI-COLORED IRID.)**
- 74A **9" FENTON PEACOCK AT THE URN FLAT PLATE - DK. MARI. (VERY SCARCE; REALLY NICE MULTI-COLORED IRID.)**
75. **9 1/2" FENTON DRAGON AND STRAWBERRY BALL FTD. RUFFLED BOWL - DK. MARI. (SUPER, SUPER COLOR AND IRID.; REALLY NICE EXAMPLE)**
76. **6" FENTON LOTUS AND GRAPE 3 FTD. TURNED IN ROSE BOWL WHIMSEY - DK. MARI. (RARE WHIMSEY SHAPE; NICE DARK COLOR)**
77. Fenton Holly Ruffled Hat with manuf. ground Base - Blue (silvery; pinhead)

78. Fenton Fern Panels Ruffled Crimped Edge Hat - Blue (damaged)
79. Fenton Blackberry Spray Crimped Edge Jack in the Pulpit Hat - Lime Green / Mari. (nice color; odd tint)
- 1700 80. **FENTON STRAWBERRY SCROLL BULBOUS WATER PITCHER - BLUE (SUPER RARE AND DESIRABLE; AN EXCELLENT EXAMPLE WITH BRIGHT BLUE HIGHLIGHTS)**
81. Fenton Mikado Large Ruffled Compote - Powder Blue / Mari. (rare tint; large chip on base)
82. Fenton Orange Tree Handled Loving Cup - Green (scarce item; silvery and has small chip on base of handle)
83. **FENTON ORANGE TREE HANDLED LOVING CUP - BLUE (SUPER ITEM; DARK OVERLAY AND PERFECT)**
84. Fenton Orange Tree ftd. Hatpin Holder - Blue (scarce; feet have some roughness)
85. **FENTON ORANGE TREE 8 PC. PUNCH SET - WHITE (SUPER EXAMPLE; NICE AND FROSTY WITH SUPER IRID.)**
86. Fenton Orange Tree Flat Plate - Mari. (super pink highlights - excellent example)
87. Fenton Orange Tree ftd. Ruffled Fruit Bowl - Mari. (nice color)
88. (9) Fenton Orange Tree Punch Cups - Blue (selling choice)
89. **FENTON ORANGE TREE FTD. 4 PC. TABLE SET - BLUE (ONE OF THE MOST DIFFICULT SETS TO FIND; NICE AND CLEAN)**
90. **FENTON BLACKBERRY BLOCK 7 PC. TANKARD WATER SET - DK. MARI. (VERY RARE SET; DARK PITCHER AND 3 TUMBLERS, 3 TUMBLERS ARE LIGHTER)**
91. Fenton Stretch 2 pc. Handled Guest Set - Mari. / Cobalt Handles (scarce and very desirable; nice color)
92. Fenton Florentine Tankard Water Pitcher with 3 Flared Handled Mugs - Celeste Blue / Cobalt Handles (super desirable set; nice color)
93. Fenton Florentine Handled Hourglass Shaped Mug - Celeste Blue / Cobalt Handle (scarce)
94. 7 1/2" Fenton Acorn Ruffled Bowl - Black Amy. (rare color for this pattern)
95. **FENTON BUTTERFLY AND FERN 7 PC. WATER SET - AMY. (ONE OF THE FINEST EXAMPLES WE'VE SOLD - SUPER!)**
96. 8 1/2" Fenton Vintage Grape Bowl with 3 in 1 Edge - Green
97. 8" Fenton Vintage Grape Bowl with Tight Crimped Edge - Amy.
98. 9" Fenton Three Fruits 12 Sided Plate - Amy. (scarce; satiny finish)
99. Fenton Panther ftd. Flared Individual Berry Bowl - Mari.
- 1500 100. **FENTON BUTTERFLY AND BERRY 7 PC. WATER SET - GREEN (AN EXTREMELY RARE COLOR FOR THIS SET - PITCHER IS SUPER!)**
101. **FENTON BUTTERFLY AND BERRY 7 PC. WATER SET - BLUE (ANOTHER SUPER EXAMPLE IN A SCARCE COLOR)**
102. 11 1/2" Fenton Stag and Holly Large Ball ftd. Ruffled Bowl - Blue (nice example; reddish irid. looks amy.)
103. 9 1/2" Fenton Concord Grape 6 Ruffled Bowl - Green (super color and irid.; chipped on base)
104. Fenton G & C ftd. Ruffled Fruit Bowl - Green (super bright color and irid.; a bit of stretch effect)
105. **FENTON PANELLED DANDELION 6 PC. TANKARD WATER SET - BLUE (ANOTHER SUPER EXAMPLE; BRIGHT COLOR AND IRID.)**
106. 9" Fenton Captive Rose Flat Plate - Blue (scarce; has silvery irid.)
107. 9" Fenton Holly Flat Plate - White (super example; bright multi-colored irid.)
108. 9" Fenton Holly Flat Plate - Dk. Mari. (super color and irid. with stretch effect; a bit crooked)
109. 7 3/4" Fenton Leaf Chain 6 Ruffled Bowl with Berry Exterior - White (very scarce size and color)
110. **FENTON BLACKBERRY 2 ROW OPEN EDGE SQUARE RUFFLED HAT - RED AMBERINA (SCARCE AND DESIRABLE; A NICE EXAMPLE)**
111. 7 3/4" Fenton Horsehead Medallion Flat Plate - Dk. Mari. (super example; great color and detail)
112. 6 1/2" Fenton Persian Medallion Flat Plate - Mari. (nice color)
113. Fenton Sailboats Stemmed Wine Glass - Mari. (fair detail)
114. 6" Fenton 3 Diamonds and Bows Swung Vase - Blue (scarce; has a few pinheads)
115. 11 3/4" Fenton April Showers Swung Vase with Peacock Tail Interior - Amy.
116. 15" Fenton Diamond Point Columns Large Swung Vase - Blue
117. Fenton Peacock at the Urn Stemmed Flared Compote - Mari.
118. N Good Luck Ruffled Bowl with Basketweave Exterior - Pur. (scarce; nice color)
119. N Singing Bird Handled Mug - Pur. (nice red and blue highlights)
- 4700 120. **N PEACOCK AT THE URN LARGE ICE CREAM BOWL - "FOREST" GREEN (SUPER, SUPER RARE AND EXTREMELY DESIRABLE; GREAT COLOR WITH BLUE AND GOLD HIGHLIGHTS)**
121. **N PEACOCK AT THE URN LARGE ICE CREAM BOWL - PUR. (VERY DESIRABLE; SUPER MULTI-COLORED IRID.; NICE)**
122. **N PEACOCK AT THE FOUNTAIN 4 PC. TABLE SET - PUR. (RARE SET; GREAT COLOR - SPOONER A BIT GOLDISH; SOLD AS SET)**
123. **N PEACOCK AT THE FOUNTAIN FTD. RUFFLED FRUIT BOWL - BLUE (RARE AND EXTREMELY DESIRABLE; SUPER IRID. WITH BLUE HIGHLIGHTS)**
124. **N PEACOCK AT THE FOUNTAIN TUMBLER - GREEN (EXTREMELY RARE IN THIS COLOR; SUPER IRID.; REALLY NICE)**
125. **N G & C STIPPLED AND BANDED LARGE FTD. FRUIT BOWL - BLUE (ABSOLUTELY SUPER - FANTASTIC COLOR AND SUPER IRID.)**
126. N G & C Small Size ftd. Fruit Bowl - Mari. (nice dark color)
127. N G & C 4 pc. Table Set - Pur. (rare set; really nice irid.; attractive set)
128. N G & C Handled Bon Bon with Basketweave Exterior - Pur. (nice multi-colored irid.)
129. N Raspberry Milk Pitcher - Green (very scarce; has bright color - super irid.)
130. N Raspberry Milk Pitcher - Pur. (scarce; great multi-colored irid.; nice)
131. N Three Fruits and Flowers Stemmed Handled Bon Bon - Blue (nice color and irid.; has elec. blue highlights)
132. N Three Fruits Plate with Basketweave Exterior - Pur. (scarce; nice color and irid.)
133. N Three Fruits Medallion ftd. Ruffled Bowl with Meander Exterior - Pur. (nice color and irid.)
134. **N LEAF AND BEADS FTD. ROSE BOWL - AQUA OPAL. (RARE AND DESIRABLE; NICE OPAL. AND IRID.)**

- 2800 135. N THREE FRUITS STIPPLED PLATE WITH RIBBED EXTERIOR - AQUA OPAL. (FANTASTIC EXAMPLE - SUPER BRIGHT COLOR AND OPAL.; MAY HAVE A SMALL BIT OF WEAR ON HIGH SPOTS)
- 1700 136. N THREE FRUITS STIPPLED PLATE WITH RIBBED EXTERIOR - TEAL (SUPER RARE; GREAT COLOR WITH NICE MULTI-COLORED IRID.)
137. (2) N Three Fruits Stippled Plates with Ribbed Exterior - Pur. (both have blue, red and gold irid. - they're about twins; selling choice)
138. N Three Fruits Stippled Plate with Ribbed Exterior - Mari. (very scarce; nice dark color; nice irid.)
139. N Three Fruits Plate with Basketweave Exterior - Mari. (nice irid.; has a yellow tint)
- 1000 140. N HEART AND FLOWERS PLATE WITH RIBBED EXTERIOR - ICE BLUE (VERY RARE AND DESIRABLE; HAS SUPER MULTI-COLORED IRID.)
- 2500 141. N HEART AND FLOWERS PLATE WITH RIBBED EXTERIOR - GREEN (VERY RARE; GREAT COLOR AND IRID.; GOLD HIGHLIGHTS AND IT LOOKS GREEN)
- 2600 142. N HEART AND FLOWERS PLATE WITH RIBBED EXTERIOR - PUR. (RARE AND VERY DESIRABLE; SUPER BLUE AND RED HIGHLIGHTS)
- 1150 143. N HEART AND FLOWERS PLATE WITH RIBBED EXTERIOR - DK. MARI. (SUPER, SUPER EXAMPLE - ONE OF THE BEST I'VE SEEN - SUPER!)
144. N HEART AND FLOWERS RUFFLED BOWL WITH RIBBED EXTERIOR - ICE BLUE (SUPER SCARCE; HAS REALLY NICE IRID.)
- 1950 145. N HEART AND FLOWERS STEMMED RUFFLED COMPOTE WITH PLAIN INTERIOR - LIME ICE GREEN (SUPER, SUPER RARE COLOR FOR THIS ITEM - REALLY NICE)
146. N HEART AND FLOWERS STEMMED RUFFLED COMPOTE WITH PLAIN EXTERIOR - ICE BLUE (SUPER EXAMPLE; GREAT PINK HIGHLIGHTS)
147. N HEART AND FLOWERS STEMMED RUFFLED COMPOTE WITH RIBBED EXTERIOR - AQUA OPAL. (SUPER DESIRABLE; HAS GREAT PASTEL FINISH; REALLY NICE)
148. N Heart and Flowers Stemmed Ruffled Compote with Ribbed Exterior - Dk. Mari. (super example; great bright irid.)
149. N Nippon Bowl with Pie Crust Edge and Ribbed Exterior - Pur. (great color and irid. - a bit brighter on edge)
- 3700 150. N PEACOCK AT THE FOUNTAIN WATER PITCHER - ICE BLUE (VERY RARE AND EXTREMELY DESIRABLE; NICE DARK COLOR WITH WONDERFUL IRID.)
151. N PEACOCK AT THE FOUNTAIN TUMBLER - ICE BLUE (RARE; GREAT COLOR AND REALLY NICE IRID.)
152. N PEACOCK AT THE FOUNTAIN CREAMER - ICE BLUE (RARE AND REALLY TOUGH IF YA NEED IT; IRID. A BIT LIGHT)
- 1150 153. N SINGING BIRD HANDLED MUG - AQUA OPAL. (RARE AND EXTREMELY DESIRABLE; SUPER OPAL. AND FANTASTIC IRID. - GREAT!)
154. N Singing Bird Handled Mug - Amy. / Lavender (fantastic color and irid.; super, super nice)
155. N PEACOCKS PLATE WITH RIBBED EXTERIOR - ICE BLUE (VERY RARE AND HAS REALLY BRIGHT, STRETCHY IRID.)
156. N Peacocks Plate with Ribbed Exterior - Ice Green (excellent example - great color and really nice irid.)
157. N Peacocks Plate with Ribbed Exterior - White (very scarce; nice stretchy irid. and color)
- 1200 158. N PEACOCKS PLATE WITH PLAIN EXTERIOR - GREEN (RARE ITEM; SUPER GOLD AND GREEN IRID. - NICE!)
- 1000 159. N PEACOCKS PLATE WITH RIBBED EXTERIOR - SODA GOLD / AMY. (SUPER ODD COLOR WITH GREAT IRID.; TOUGH TO FIND)
160. N PEACOCKS STIPPLED PLATE WITH RIBBED EXTERIOR - ELEC. BLUE (RARE AND DESIRABLE; HAS NARROW BASE AND UNIRIDIZED EXTERIOR; NICE STRETCH EFFECT)
161. N PEACOCKS STIPPLED PLATE WITH RIBBED EXTERIOR - MARI. (RARE AND NICE COLOR AND IRID.; HAS NARROW BASE)
162. N Peacocks Stippled Bowl with Pie Crust Edge and Ribbed Exterior - Mari. (very scarce; nice red highlights; a bit spotty in center)
163. N DANDELION HANDLED MUG - AQUA OPAL. (SUPER DESIRABLE; NICE OPAL. AND IRID.)
164. N DANDELION / KNIGHTS TEMPLAR HANDLED MUG - DK. MARI. (SUPER BRIGHT COLOR AND IRID.; REALLY NICE)
165. N SPRINGTIME 7 PC. WATER SET - GREEN (VERY RARE AND EXTREMELY DESIRABLE SET WITH FANTASTIC COLOR AND IRID.; SUPER, SUPER)
166. N ACORN BURRS 7 PC. WATER SET - PUR. (RARE AND SUPER SET; PITCHER HAS NICE RED, GOLD IRID. WITH WELL MATCHED TUMBLERS)
167. N GREEK KEY PLATE WITH BASKETWEAVE EXTERIOR - GREEN (RARE AND VERY DESIRABLE; REALLY NICE SATINY FINISH)
168. N GREEK KEY PLATE WITH BASKETWEAVE EXTERIOR - MARI. (SUPER, SUPER DESIRABLE - REALLY NICE SATINY FINISH)
169. N EMBROIDERED MUMS PLATE WITH RIBBED EXTERIOR - ICE GREEN (VERY RARE AND DESIRABLE; IRID. IS A BIT SILVERY)
- 3600 170. N POPPY SHOW PLATE - ELEC. BLUE (UNBELIEVABLE BRIGHT ELEC. BLUE FINISH; A SUPER, SUPER EXAMPLE)
171. N POPPY SHOW PLATE - WHITE (RARE AND DESIRABLE; HAS REALLY NICE MULTI-COLORED IRID.)
- 3000 172. N ROSE SHOW VARIANT PLATE WITH RIBBED EXTERIOR - BLUE (VERY RARE AND EXTREMELY DESIRABLE; HAS NARROW BASE)
173. N ROSE SHOW PLATE - PUR. (RARE AND VERY DESIRABLE; SUPER, SUPER BRIGHT IRID.)
174. N Good Luck Bowl with Pie Crust Edge and Ribbed Exterior - Blue (very scarce; bright irid. with elec. blue highlights)
- 1500 175. N G & C FTD. FERNERY - ICE BLUE (SUPER RARE NOWADAYS; NICE BASE COLOR AND REALLY NICE IRID.)
176. N G & C FTD. BANANA BOAT - ICE BLUE (RARE AND ALWAYS IN DEMAND; NICE COLOR AND IRID.)
177. N G & C STIPPLED BOWL WITH PIE CRUST EDGE AND RIBBED EXTERIOR - ICE BLUE (RARE AND SUPER DESIRABLE; NICE IRID.)
- 900 178. N G & C COVERED CRACKER JAR - WHITE (EXTREMELY RARE AND UNDERPRICED - VERY RARELY SOLD; GREAT IRID.)
179. N G & C Large Ice Cream Bowl with Ribbed Exterior - White (very scarce; nice multi-colored irid.)
180. N G & C STIPPLED PLATE WITH RIBBED EXTERIOR - GREEN (RARE AND VERY DESIRABLE; TOUGH TO FIND)

START OF SECOND SESSION

181. **N G & C VARIANT STIPPLED FLAT PLATE WITH RIBBED EXTERIOR - BLUE (RARE AND REALLY FLAT; GREAT GOLD AND RED IRID.; NICE)**
182. N G & C Variant Plate with Plain Exterior - Amy. (super bright multi-colored irid.; nice)
183. N G & C Variant Stippled Bowl with Pie Crust Edge and Ribbed Exterior - Blue (a really super example; great color and irid.)
184. (2) N G & C Covered Sweetmeat Compotes - Pur. (super color and irid.; selling choice)
185. **N STRAWBERRY STIPPLED PLATE WITH RIBBED EXTERIOR - PUR. (RARE AND DESIRABLE; GOLD, RED AND BLUE HIGHLIGHTS)**
186. N Strawberry Stippled Bowl with Pie Crust Edge and Ribbed Exterior - Pur. (very scarce; and desirable; gold, red and blue highlights)
187. N Strawberry Plate with Basketweave Exterior - Green (scarce; gets a bit silvery in the center)
188. N Strawberry Plate with Basketweave Exterior - Amy. (scarce; satiny finish)
189. N Ribbed Jester's Cap Jack in the Pulpit Vase - Pur. (very scarce item)
190. **N IVY TOWN PUMP - PUR. (PERFECT - GREAT COLOR AND IRID. WITH GOLD HIGHLIGHTS)**
191. **N CORN VASE WITH STALK BASE - BLACK AMY. (REALLY DARK WITH SILVERY IRID.; SCARCE)**
192. N Corn Vase with Stalk Base - White (scarce; nice and frosty)
193. **N ROUND BUSHEL BASKET - AQUA OPAL. (SUPER COLOR AND IRID.; GREAT PASTEL EXAMPLE)**
194. N Round Bushel Basket - Blue (scarce; multi-colored irid. with gold highlights)
195. **N DANDELION TANKARD WATER PITCHER WITH RIBBED INTERIOR AND 1 TUMBLER - PUR. (FANTASTIC EXAMPLE; ONE OF THE BEST!)**
196. (2) N Lustre Flute 2 Handled Bon Bons - Green (selling choice)
197. N Beaded Cable ftd. Rose Bowl - Dk. Mari. (super color and irid. - excellent example)
198. N Fine Cut and Roses ftd. Rose Bowl - Pur. (great color and irid.; perfect feet)
199. N Daisy and Plume ftd. Rose Bowl with Ribbed Interior - Mari.
200. **N ORIENTAL POPPY TANKARD WATER PITCHER AND 2 TUMBLERS - PUR. (ANOTHER OUTSTANDING EXAMPLE; SUPER COLOR AND IRID.)**
201. **N ORIENTAL POPPY TANKARD WATER PITCHER WITH RIBBED INTERIOR AND 4 TUMBLERS - WHITE (SUPER FROSTY COLOR WITH EXCELLENT IRID.; REALLY NICE)**
202. N Oriental Poppy Tankard water Pitcher with Ribbed Interior and 6 Tumblers - Mari. (scarce and underpriced; tumblers are dark)
203. N Drapery Tri-Cornered Candy Dish - Lime Ice Green (rare color; nice; tiny flake on one toe)
204. N Drapery Tri-Cornered Candy Dish - Pur. (super exterior irid. with blue highlights - nice)
205. **N ACORN BURR 7 PC. WATER SET - PUR. (RARE AND VERY DESIRABLE; EXCELLENT COLOR AND IRID.)**
206. **N ACORN BURR 5 PC. WATER SET - MARI. (ANOTHER RARE SET; NICE COLOR AND IRID.)**
207. N Rose Show Ruffled Bowl - Pur. (silvery irid.; damage on one rose)
208. N Plain Interior Bowl with Pie Crust Edge and Plain Exterior - Amy.
209. N Wishbone ftd. Ruffled Bowl with Ruffles and Rings Exterior - Green
210. **N PEACOCK AT THE FOUNTAIN 6 PC. PUNCH SET - PUR. (RARE AND DESIRABLE; BOWL AND BASE ARE SUPER - CUPS A BIT SILVERY)**
211. **N PEACOCK AT THE FOUNTAIN 7 PC. WATER SET - BLUE (VERY DESIRABLE SET; HAS ELEC. BLUE HIGHLIGHTS)**
212. **N PEACOCK AT THE FOUNTAIN 6 PC. WATER SET - PUR. (ANOTHER NICE SET; ELEC. BLUE HIGHLIGHTS)**
213. **N PEACOCK AT THE FOUNTAIN 5 PC. WATER SET - PASTEL MARI. (FANTASTIC COLOR AND IRID.; A SUPER SET)**
214. (2) N Peacock at the Fountain Punch Cups - Pur. (silvery; both have chips)
215. N Peacock at the Fountain ftd. Fruit Bowl - Pur. (scarce; has 3 bruises on inside)
216. N Raspberry Milk Pitcher - Pur. (scarce with nice color and irid.)
217. N Daisy and Plume Stemmed Ruffled Compote - Pur.
218. N Rosette ftd. Ruffled Bowl with Ruffles and Rings Exterior - Pur. (nice irid.)
219. N Singing Bird Handled Mug - Dk. Mari. (super, super color and irid.)
220. **N SINGING BIRDS 7 PC. WATER SET - EMERALD GREEN (SUPER ELECTRIC IRID.; A WONDERFUL SET)**
221. N Three Fruits Plate with Basketweave Exterior - Pur. (super color and irid.; one of the better ones)
222. N Three Fruits Medallion Spatula ftd. Bowl with Meander Exterior - Pur. (nice color and irid.)
223. N Three Fruits domed Ruffled Bowl with Basketweave Exterior - White (scarce; has odd lavender streak in it)
224. N Poppy Ruffled Relish Tray - Elec. Blue (super irid.; scarce)
225. **N G & C 14 PC. MASTER PUNCH SET - PUR. (RARE AND VERY DESIRABLE; EXCELLENT COLOR AND IRID.; WELL MATCHED)**
226. **N G & C 10 PC. MASTER PUNCH SET - DK. MARI. (ANOTHER GREAT SET; SUPER COLOR AND IRID.)**
227. N G & C Small Size ftd. Ruffled Fruit Bowl - Pur. (scarce; a bit silvery)
228. N G & C ftd. Banana Boat - Pur. (scarce; a bit silvery)
229. N G & C Variant Bowl with Pie Crust Edge and Basketweave Exterior - Amy. (nice color and irid.)
230. **N G & C 7 PC. WATER SET - GREEN (RARE AND UNDERPRICED; HAS GREAT COLOR AND IRID.)**
231. **N G & C 2 PC. CANDLELAMP - GREEN (RARE AND DESIRABLE; HAS REALLY NICE SATINY FINISH)**
232. **N G & C FTD. HATPIN HOLDER - GREEN (VERY SCARCE AND DESIRABLE; NICE COLOR)**
233. N G & C Large Dresser Tray - Green (super color and irid.; has tiny open bubble on base)
234. N G & C Whiskey Decanter and No Stopper - Pur. (has above average irid.; where's the stopper?)
235. **N G & C SMALL SIZE FLARED 9 PC. PUNCH SET - PUR. (SUPER COLOR WITH ELEC. BLUE HIGHLIGHTS; RARE WITH THE FLARE)**
236. N G & C Covered Sweetmeat Compote - Pur. (super color and irid.)
237. **N G & C COVERED COMPOTE - PUR. (VERY SCARCE; NICE COLOR AND IRID.)**
238. N G & C Covered Cracker Jar - Pur. (very scarce item; nice color and irid.)
239. N G & C 7 pc. Water Set - Pur. (scarce; has average irid.)
240. **N G & C 7 PC. TANKARD WATER SET - PUR. (RARE SET; HAS AVERAGE COLOR AND IRID.)**

241. **NG & C SMALL SIZE PIN TRAY - PUR. (SCARCE AND VERY DESIRABLE; NICE COLOR)**
242. **(2) NG & C COLOGNE BOTTLES AND STOPPERS - PUR. (SCARCE AND SUPER; SELLING CHOICE)**
243. NG & C Covered Powder Jar - Pur. (scarce; average irid.; minor rim roughness)
244. NG & C Covered Butter Dish - Pur. (scarce; nice color)
245. NG & C Variant 6 pc. Punch Set - Mari. (scarce; nice satiny finish)
246. NG & C Covered Cookie Jar - Dk. Mari. (scarce; super pink and blue highlights)
247. NG & C Cologne Bottle and Stopper - Mari. (scarce; nice color and irid.)
248. NG & C Covered Sugar Bowl - Dk. Mari. (scarce; nice color)
249. NG & C Spooner - Dk. Mari. (super color; has 2 small chips)
250. NG & C Plate with Basketweave Exterior - Mari.
251. N Flute (or Wide Panel) 4 pc. Table Set - Mari. (scarce set)
252. N Concave Diamond 7 pc. Tankard Water Set - Celeste Blue (super set; has lid and 5 tumblers)
253. N Strawberry Plate with Basketweave Exterior - Green (scarce; nice color and irid.)
254. N Strawberry Plate with Basketweave Exterior - Pur. (scarce; red, gold irid.)
255. **N GRAPE ARBOR 6 PC. TANKARD WATER SET - WHITE (RARE SET; NICE AND FROSTY)**
256. **N WIDE PANEL 4 LILY EPERGNE - GREEN (SUPER - ABOUT AS GOOD AS THEY GET)**
257. **N GOOD LUCK BOWL WITH PIE CRUST EDGE AND RIBBED EXTERIOR - ELEC. BLUE (VERY SCARCE; HAS SUPER, SUPER IRID.)**
258. N Good Luck Ruffled Bowl with Basketweave Exterior - Pur. (scarce; has a satiny finish)
259. N Good Luck Bowl with Pie Crust Edge and Basketweave Exterior - Mari. (scarce; nice)
260. **N MEMPHIS 12 PC. SMALL SIZE PUNCH SET - PUR (SCARCE AND DESIRABLE; HAS ELEC. BLUE HIGHLIGHTS)**
261. **N PEACOCKS STIPPLED PLATE WITH RIBBED EXTERIOR - MARI. (SCARCE WITH SUPER SATINY FINISH)**
262. N Peacocks Plate with Ribbed Exterior - Ice Green (scarce; great color and irid.)
263. 9 1/2" N Tree Trunk Swung Vase - Pur. (super color; has elec. blue highlights)
264. (2) 9 1/2" - 10" N Tree Trunk Swung Vases - Amy. (selling so much each for the pair)
265. **DUGAN BUTTERFLY AND TULIP LARGE SQUARE FTD. BOWL - PUR. (VERY RARE AND DESIRABLE; SUPER MULTI-COLORED IRID.; A SUPER ITEM)**
266. Dugan Vintage Grape Domed Ruffled Bowl - Pur. (very scarce item; nice multi-colored irid.)
267. Dugan Fanciful Plate - Amy. (rare item; really nice satiny finish)
268. **DUGAN BEADED SHELL HANDLED MUG - DK. MARI. (BRIGHT, RADIUM IRID.; A SUPER EXAMPLE)**
269. **7 1/2" DUGAN VINING TWIGS FLAT PLATE WITH FLOWER INTERIOR - WHITE (EXTREMELY RARE ITEM IN THIS COLOR; REALLY FLAT WITH GREAT IRID.)**
270. **DUGAN VINEYARD 5 PC. BULBOUS WATER SET - PUR. (RARE SET; NICE PITCHER, ONE NICE TUMBLER, 3 ARE SILVERY AND ONE CHIPPED)**
271. Dugan Pony 6 Ruffled Bowl - Mari.
272. Dugan Miniature Basketweave Handled Flower Basket - Mari.
273. Dugan Vintage Grape Covered Powder Jar - Mari. (loose lid)
274. Dugan Fan ftd. Handled Gravy Boat - P. Opal. (nice color and opal.)
275. **DUGAN DAHLIA 7 PC. FTD. BERRY SET - PUR. (SUPER RARE SET; 1ST COMPLETE WE'VE SOLD)**
276. Dugan Cherry Wreath Large Oval Berry Bowl - Pur. (average color; spotty interior)
277. Dugan Question Mark Handled Stemmed Bon Bon - Pur.
278. Dugan Grape Delight 6 ftd. Round Rose Bowl - Pur. (repaired feet)
279. Dugan Flowers and Frames domed Ruffled Bowl - Pur. (silvery; scarce)
280. **DUGAN MAPLE LEAF 7 PC. WATER SET - PUR. (SCARCE SET; NICE AVERAGE COLOR AND IRID.)**
281. Dugan Fishermans Mug - Pur. (damaged at handle)
282. Dugan Twigs Swung Bud Vase - Amy. (chipped on base)
283. Imperial Grape 9 pc. Punch Set - Dk. Mari. (nice color and irid.)
284. **IMPERIAL LOGANBERRY VASE - HELIOS GREEN (SCARCE; ATTRACTIVE FOR A HELIOS ITEM)**
285. **IMPERIAL NUART HOMESTEAD CHOP PLATE - EMERALD GREEN (AN INCREDIBLE EXAMPLE - SUPER BRIGHT BASE GLASS WITH SUPER MULTI-COLORED IRID. - WOW!)**
286. **IMPERIAL EMBOSSED SCROLL FLAT PLATE - PUR. (VERY DESIRABLE; SUPER MULTI-COLORED IRID.)**
287. Imperial Waffle Block Handled Flower Basket - Dk. Mari.
288. Imperial Flute Toothpick Holder - Pur. (nice color)
289. Imperial Flute Toothpick Holder - Dk. Mari. (nice color)
290. **IMPERIAL DIAMOND LACE WATER PITCHER - PUR. (SUPER, SUPER COLOR AND IRID.)**
291. (4) Imperial Diamond Lace Tumblers - Pur. (super color and irid.; selling choice)
292. Imperial Grape Wine Decanter and Stopper - Pur. (great color; fantastic irid.; super example)
293. Imperial Heavy Grape Individual Berry Bowl - Pur. (scarce item)
294. Imperial Grape Cup and Saucer - Helios Green (scarce)
295. Imperial Windmill Milk Pitcher - Helios Green (very scarce)
296. Imperial Twins Individual Ruffled Berry Bowl - Helios Green (has lime green tint - very scarce color)
297. Imperial Twins 2 pc. Fruit Bowl and Base - Mari.
298. Imperial 474 Punch Bowl and Base with 3 Cups - Dk. Mari.
299. Imperial Flute Ruffled Punch Bowl, Base and 1 Cup - Dk. Mari.
300. **4 3/4" BASE X 9" HIGH IMPERIAL ZIPPER LOOP KEROSENE LAMP - DK. MARI. (VERY SCARCE ITEM; SUPER COLOR AND IRID.)**
301. (2) Imperial Octagon Stemmed Goblets - Mari. (selling choice)
302. 13 1/2" Tall x 5" Base Imperial Parlor Panels Swung Funeral Vase - Dk. Mari. (scarce; excellent color and irid.)
303. (4) Imperial 474 Tumblers - Mari. (nice color; selling choice (1 cracked))
304. Imperial Grape Ruffled Master Berry Bowl - Pur. (super, super color and fantastic irid.)
305. **IMPERIAL ROCOCO VASE - SMOKE (PERFECT WITH EXCELLENT COLOR AND IRID.)**
306. New Imperial Mayflower Water Pitcher - Mari.
307. Westmoreland Large Shell Novelty Candy Dish - Amy.
308. Westmoreland Strutting Peacock Creamer with no Lid - Amy.

