

Antique Auction

# AUCTION

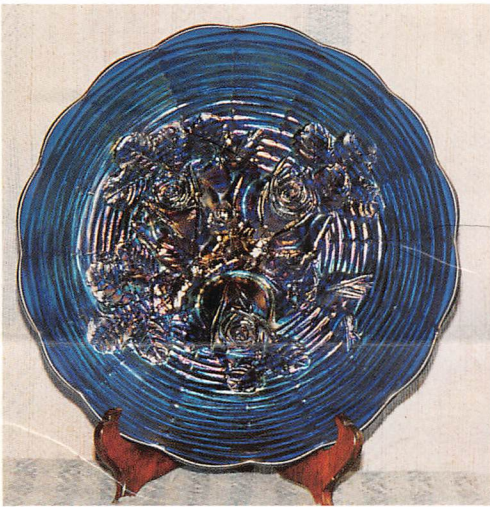


Saturday, September 17, 1994 – 9:30 A.M.

HEART OF AMERICA 4-H YOUTH CENTER

Independence

Missouri





Antique Auction

# AUCTION



**Saturday, Sept. 17, 1994 – 9:30 A.M.**

**HEART OF AMERICA 4-H YOUTH CENTER**

**2820 S. HWY. 291 & Frontage Road (just north of I-70)**

**Independence, Missouri**

*Herb and Sadie Treff - Owners*

Herb and Sadie Treff have been long time collectors of many Fine Antiques. Carnival Glass has been their main hobby for a number of years. They have decided to sell their entire collection at public auction to the highest bidder.



**TERMS:** Cash. Checks accepted if previously approved

**WRITE-IN BIDS:** Accepted with a written statement of the amount of your bid. Please Note - there is a 5% handling charge which will be added to the selling price of all write-in bids. This is in addition to the cost of postage and insurance. For your convenience, FAX #316-746-2145. Sorry, no phone bids.



Douglass, KS 67039 (316) 747-2694





1. Three Fruits Spatula Footed Bowl, amy
2. Strawberry Plate, amy
3. Poppy Show Bowl, w
4. Stippled Rays Bowl, p
5. Stag and Holly Footed Bowl, cb
6. Dragon and Lotus Bowl, CRE, p
7. Orange Tree Mug, m
8. Peacock at the Urn Ice Cream Bowl, w
9. Wishbone Footed Bowl, amy
10. Grape and Grape Leaf Bowl, CRE, amy
11. Three Fruits Plate, p
12. Peacock and Grape Bowl, CRE, m
13. Strawberry Bowl, CRE, g
14. Grape and Cable Spatula Footed Bowl, p
15. Persian Medallion Bowl, amy
16. Three Fruits Plate, p
17. Three Fruits Bowl, CRE, p
18. Holly Bowl, CRE, b
19. Peacock and Grape Bowl, g
20. Holly Bowl, g
21. Ten Mums Bowl, CRE with: a metal holder
22. Peacock Tail Bowl with Quincy Jewelers Advertising, g
23. Grape and Cable Bowl, g
24. Dragon and Lotus Bowl, CRE, p
25. Peacock Tail Bowl, amy
26. Acorn Bowl, amy
27. Stippled Three Fruits Bowl, w
28. Grape and Cable Bowl, amy
29. Stippled Rays Bowl, CRE, g
30. Grape and Grape Leaf Bowl, CRE, amy
31. Grape and Grape Leaf Bowl, amy
32. Drapery Vase, p
33. Thistle Bowl, b
34. Peacock and Grape Bowl, b
35. Stippled Rays Two Handled Bon-Bon, amy
36. Peacock Tail Hat, CRE, amy
37. Grape and Grape Leaf Bowl, CRE, amy
38. Thistle Bowl, g
39. Acorn Bowl, b
40. Double Dutch Bowl, m
41. Holly Bowl, p
42. Blackberry Compote, amy
43. Graceful Compote, g
44. Rays Compote, amy
45. Rays Compote, m
46. Grape and Grape Leaf Bowl, b
47. Holly Hat, b
48. Persian Garden Bowl on a metal holder, ib
49. Holly Bowl frisbee shaped, b
50. Persian Medallion Two Handled Bon-Bon, b
51. Fish Scales Bowl, amy
52. Peacock Tail Bowl, m
53. Strawberry Bowl, basketweave exterior, p
54. Orange Tree Bowl, b
55. Holly Hat, b
56. Leaf Chain Bowl, b
57. Two Flowers Berry Bowl, b
58. Compote, po
59. Butterfly and Berry Set with six small bowls, m
60. Grape and Cable Fruit Bowl, p
61. Peacock at the Urn Compote, b
62. Bushel Basket, b
63. Grape and Cable Hatpin Holder, p
64. Lotus and Grape Two Handled Bon-Bon, b
65. Persian Garden Compote, p
66. Grape and Cable Waterset four tumblers, p
67. Dugan Holly Gravy Dish, po
68. Grape and Cable Powder Box, no lid, p
69. Grape and Cable Butterdish, p
70. Grape and Cable Sweetmeat, p
71. Grape and Cable Breakfast Creamer and Sugar, p
72. Round Grape and Cable Fruit Bowl, b
73. Grape and Gothic Arches Table Set, b
74. Dugan Bowl, b
75. Imperial Grape Wine Set, amy
76. Blackberry Hat, g
77. Persian Medallion Two Handled Bon-Bon, b
78. Two Wine Glasses, p
79. Blackberry Bramble Compote, g
80. Large Orange Tree Tumbler, chip, b
81. Peacock on the Fence Bowl, CRE, b
82. Two Handled Butterfly Bon-Bon, b
83. Peacock at the Fountain Butterdish, p



## PITCHERS

Cranberry Opalescent Swirl, Cranberry Drapery, Cranberry with a clear threaded handle, Cranberry Coinspot, Royal Ivy, Blue Enamelled with butterflies, Blue with large enamelled flowers, Enamelled Blue with white flowers, Blue with heavy gold enamelling, Blue Bulbous Coinspot, Cobalt Blue Enamelled, Green Opalescent Drapery, Blue Spanish Lace, Green Delaware, Amethyst with enamelled flowers, Green Enamelled with a band, Green Bulbous with small flowers, Yellow Spanish Lace and 1 tumbler, Clear and Opalescent Swirl, Ruby Flash, Blue Pressed Glass with basketweave exterior, Blue Bulbous Coinspot, Blue Opalescent with floral design, Clear Square Pressed Glass with etched apples, Custard Northwood Fan and 3 tumblers, Banded Vaseline, Large Cranberry with enamelled daisies, Cranberry Waterset, Cranberry Spanish Lace Waterset, Cranberry Opalescent Hobnail, End of the Day and 4 tumblers, and more!

## ART GLASS & PRESSED GLASS

Green Croesus Table Set, Green Delaware Creamer, Green Croesus Creamer and Sugar, Blue Opalescent Rosebowl, Thorn Handled Basket, pink interior, Custard Souvenir, Blue Drapery Spooner, Vaseline



Pedestaled Celery, Blue Opalescent Leaf and Beads Rosebowl, Ruby Sugar Shaker, Amberina Thumbprint Cream Pitcher, Green Opalescent Tumble-Up, Cranberry Swirl Cracker Jar, Small Cranberry Swirl Pitcher, Square Condiment Set with 4 square bottles, Pressed Covered Compote with strawberries, Black Amethyst Vases with applied beading, Cranberry Spanish Lace Syrup Pitcher, Bohemian Type Whiskey Flask, Cranberry Vase with an applied band, Etched Ruby Wine Decanter no stopper, Rubina Mug, Cranberry Cruet, Clear Basket with etched flowers, Clear Compote with fans, Cosmos Butterdish, Pickle Castor with fancy metal holder, Child's Butterdish, Creamer and Sugar, Imperial Stretch Vase with dolphin handles, Pedestaled Jubilee Pitcher, Plume Pitcher, Ribbed Candy Pitcher, Baltimore Pear Celery, Sugar and Creamer, Wreathed Cherry Butterdish, Cranberry Cut Wines, Ruby Flash Wines, Pressed Butterdish, Tiffany type Vases, Depression Trays, Fostoria Wine, Sherbert, Water and more, Aladdin Lamps with shades, Louis XV Custard Waterset, Blue Dolly Madison Butter Dish, Creamer and Sugar, Baltimore Pear Compote, Cased Brides Bowls without holder, and much more!





## PORCELAIN, CHINA & OTHER

Bavaria Cup and Saucer, Buster Brown Creamer, RS Prussia Chocolate Pot and 3 cups and saucers, Bavaria Set with cups and dinner plates, Bavarian Platter and Plates with wreathes of roses, Warwick Pitcher and three mugs with apples and grapes, Jewel Tea Pitcher, Bavarian Coffee Pot, Germany Desert Dishes with roses, Haviland Vegetable Bowl, Royal Albert Butterdish, MZ Austria Berry Dish, Beileek Ewer with violets, B & G Christmas Plates, 1968, 1970, 1971, & 1972, Two Handled Cake Plate with courting scene, Plate with a monk, Haviland Two Handled Pillow Vase, Limoges Plate with oriental pheasants, Royal Saxe Portrait Plate, Two Handled Scenic Cake Plate, JPL France Mugs, Germany Pitcher, Lemonade Pitchers, Small RS Germany Berry Bowls, Limoges Footed Bowl, RS Prussia Plate with roses, Prussia Cracker Jar with no lid, Prove Saxe Portrait Plate with red border, Germany Cracker Jar with roses, Two Handled Cake Plate with rose decor, C & T Germany Plate, Limoges Tea Pot and Creamer, Beehive Portrait Plate, Coronet Limoges Tea Pot, Creamer and Sugar, Prussia Cracker Jar, blue with handles, CT Germany Cobalt Blue

Cake Plate, Royal Rudolstadt Cracker Jar, Large Portrait Cake Plate, Austria Moose Creamer, Blue Stoneware Pitcher with a dog handle, Royal Bonn Vase with water lilies, Blue Bennington type Pitcher, Blue Pitcher with an elk, Austria Pitcher with roses, Masonic Pitcher with desert scene, Avon Pitcher with mulberries, Bennington type Pitcher with enamelled flowers, Bavaria Lemonade Set with grapes and spider webs, Cobalt Blue Beer Stein with Monk Portrait, has a removable metal rim to scrape off the foam, Germany Mustache Cup with a sailing ship, Bavaria Vase with roses, Bisque Dish with Cherubs and Swans, Germany Mustache Cup with forget-me-nots, Mustache Cup with horse's head, Shaving Mug, Children's Cup and Saucer, Germany Demitasse Cup, Fort Scott Souvenir Cup, Omaha High School Souvenir Cup, RS Prussia Plate, Iris Mold Prussia Bowl, Pink RS Prussia Bowl, medallion mold, Jewel Tea Casserole Dish, Jewel Tea Desert Dishes, Jewel Tea, 5 pc Pitcher and Bowl Set in browns, and Much more; FURNITURE - China Cabinets, Sewing Bench, Chairs ect.

## TUMBLERS

Cranberry Opalescent Reverse Swirl, 7 Green Frosted with pink and white enamelled flowers, Green Apple, Green Enamelled, 2 Royal Ivy, Blue Enamelled, Green Enamelled, Amberina, Pink Swirl, Pink Satin, Amberina Swirl, Apple, Cherry and Lattice, Blue Enamelled Cherries, Ruby Flash, 5 Custard Chrysanthemum Sprig, Purple Cased, Geneva, 4 Vermont, Souvenir Custard from Delphous, Ks, 2 Vaseline with grapes, Blue Etched, 3 Blue Quilted, Jeweled Heart, Green Colorado, Green Poppy, Ruby Flash with loops, White to Vaseline Cut, Pressed Glass with shells, Cranberry Delaware, Fenton Drapery with enamelled flowers, Minden Mo Souvenir, Enamelled, Cattail and Waterlily, End of the Day, Coinspot, Coinspot Amberina, Green Custard Georgia Gem.





- |       |   |       |   |
|-------|---|-------|---|
| _____ | 84. Peacock at the Fountain Waterset, b                   | _____ | 128. Grape Delight Rosebowl, amy                          |
| _____ | 85. Lustre Rose Compote, g                                | _____ | 129. Grape Delight Fernery, b                             |
| _____ | 86. Peacock and Grape Bowl, b                             | _____ | 130. Butterfly and Plume Waterset, amy                    |
| _____ | 87. Peacock Tail Compote, b                               | _____ | 131. Orange Tree Hatpin Holder, m                         |
| _____ | 88. Floral and Grape Waterset, amy                        | _____ | 132. Stippled Three Fruits Plate, m                       |
| _____ | 89. Peacock at the Urn Compote, b                         | _____ | 133. Dragon and Lotus Bowl, m                             |
| _____ | 90. Singing Bird Waterset, p                              | _____ | 134. Peacock at the Urn Bowl, m                           |
| _____ | 91. Geometric Waterset, p                                 | _____ | 135. Holly Compote, m                                     |
| _____ | 92. Mikado Cherry Compote, b                              | _____ | 136. Grape and Cable Powder Box, m                        |
| _____ | 93. Heart and Vine Bowl, CRE, b                           | _____ | 137. Leaf Chain Plate, m                                  |
| _____ | 94. Handgrip Plate with a ruffled edge, po                | _____ | 138. Holly Bowl, m  |
| _____ | 95. Coinspot Bowl, m                                      | _____ | 139. Plate with roses, m                                  |
| _____ | 96. Coinspot Bowl, p                                      | _____ | 140. Peacock on the Fence Plate, b                        |
| _____ | 97. Footed Chrysanthemum Bowl, m                          | _____ | 141. Rose Show Plate, b                                   |
| _____ | 98. Poppy Bowl, amy                                       | _____ | 142. Strawberry Bowl, b                                   |
| _____ | 99. Grape Leaf Bowl, p                                    | _____ | 143. Leaf and Beads Rosebowl, p                           |
| _____ | 100. Stippled Flowers Bowl, po                            | _____ | 144. Peacock on the Fence Plate, p                        |
| _____ | 101. Holly Two Handled Bon-Bon, g                         | _____ | 145. Footed Wishbone Bowl, p                              |
| _____ | 102. Good Luck Bowl, g                                    | _____ | 146. Three Fruits Plate, g                                |
| _____ | 103. Good Luck Bowl, b                                    | _____ | 147. Three Fruits Two Handled Bon-Bon, b                  |
| _____ | 104. Good Luck Bowl, p                                    | _____ | 148. Ten Mums Bowl, b                                     |
| _____ | 105. Three Fruits Bowl, amy                               | _____ | 149. Three Fruits Bowl, p                                 |
| _____ | 106. Good Luck Bowl, CRE, p                               | _____ | 150. Poinsettia Bowl, b                                   |
| _____ | 107. Footed Stag and Holly Bowl, b                        | _____ | 151. Strawberry Bowl, p                                   |
| _____ | 108. Frisbee Shaped Grape and Cable Bowl, amy             | _____ | 152. Nesting Swan Bowl, p                                 |
| _____ | 109. Round Grape and Cable Fruit Bowl, p                  | _____ | 153. Geometric Hat, p                                     |
| _____ | 110. Spatula Footed Sunflower Bowl, amy                   | _____ | 154. Rambling Rose Tumbler, b                             |
| _____ | 111. Footed Windmill Bowl, b                              | _____ | 155. Strawberry Bowl, p                                   |
| _____ | 112. 3 Peacock at the Fountain Tumblers, b                | _____ | 156. Basket, amber  |
| _____ | 113. Stork and Rushes Tumbler, b                          | _____ | 157. Butterfly and Berry Butterdish, Creamer and Sugar, m |
| _____ | 114. 2 Beaded Shell Tumblers, b                           | _____ | 158. Wishbone Bowl, p                                     |
| _____ | 115. Enamelled Cherry Tumbler, b                          | _____ | 159. 4 Butterfly and Berry Berry Dishes                   |
| _____ | 116. Heavy Iris Tumbler, b                                | _____ | 160. Waterlily and Cattail Berry Bowl, m                  |
| _____ | 117. Heavy Iris Tumbler, p                                | _____ | 161. Imperial Grape Wine Set, m                           |
| _____ | 118. Drapery Rose Bowl, w                                 | _____ | 162. 3 Stork and Rushes Tumblers, b                       |
| _____ | 119. 2 S Repeat Punch Cups, amy                           | _____ | 163. Floral And Grape Waterset, b                         |
| _____ | 120. Apple Twig Plate, w                                  | _____ | 164. Blackberry Block Pitcher and 6 Tumblers, p           |
| _____ | 121. Persian Garden Compote, w                            | _____ | 165. Peacock at the Fountain Waterset, b                  |
| _____ | 122. Grape Compote, amy                                   | _____ | 166. Four Flowers Bowl, b                                 |
| _____ | 123. Grape and Cable Waterset, p                          | _____ | 167. Orange Tree Loving Cup, m                            |
| _____ | 124. Enamelled Waterset, white flowers, b                 | _____ | 168. Footed Horse's Head Bowl, m                          |
| _____ | 125. Blackberry Block Pitcher, cracked, and 4 tumblers, g | _____ | 169. Frisbee Shaped Peacock at the Urn Bowl, p            |
| _____ | 126. Orange Tree Rosebowl, b                              | _____ | 170. Jack in the Pulpit Holly Hat, r                      |
| _____ | 127. Drapery and Band Water Pitcher, enamelled flowers, p |       |   |



- |  |  |
|--|--|
| _____ 171. Four Flowers Plate, po                  | _____ 204. Small Basket, m                         |
| _____ 172. Grape and Cable Spatula Footed Plate, p | _____ 205. Bowl, CRE, m                            |
| _____ 173. Wreathed Cherry Footed Bowl, m          | _____ 206. 2 One Handled Nappies, po, m            |
| _____ 174. Strawberry Two Handled Bon-Bon          | _____ 207. Soda Gold Berry Set, m                  |
| _____ 175. Fern Panel Hat, m                       | _____ 208. Footed Bowl with Cherries, po           |
| _____ 176. Leaf Chains Bowl, m                     | _____ 209. Coinspot Bowl, amy                      |
| _____ 177. Footed Stag and Holly Bowl, m           | _____ 210. Grape and Cable Bowl, b                 |
| _____ 178. Peacock at the Urn Bowl, m              | _____ 211. Pedestaled Greek Key Bowl, g            |
| _____ 179. Imperial Grape Waterset, m              | _____ 212. Orange Tree Bowl, m                     |
| _____ 180. Coinspot Compote, po                    | _____ 213. Field Flower Tumbler, m                 |
| _____ 181. Rambling Rose Water Pitcher, m          | _____ 214. Lattice Tumbler, m                      |
| _____ 182. Poinsettia Milk Pitcher, m              | _____ 215. Pedestaled Apple Blossom Bowl, m        |
| _____ 183. Milk Pitcher, m                         | _____ 216. Bowl with exterior pattern, g           |
| _____ 184. Blackberry Water Carafe, p              | _____ 217. 2 Leaf Swirl Compotes, p                |
| _____ 185. Owl Bank, m                             | _____ 218. Twins Punch Bowl Top, different base, m |
| _____ 186. Swan Powder Box, m                      | _____ 219. Wreathed Flowers Bowl, m                |
| _____ 187. Geometric Milk Pitcher, m               | _____ 220. Geometric Bowl, m                       |
| _____ 188. 2 Vases, m                              | _____ 221. Blackberry Bowl, m                      |
| _____ 189. Peacock on the Fence Bowl, CRE, m       | _____ 222. Fentonia Tumbler, b                     |
| _____ 190. Drapery and Band Enamelled Waterset, m  | _____ 223. Swag and Bracket Water Pitcher, p       |
| _____ 191. Good Luck Bowl, m                       | _____ 224. Wreathed Cherry Water Pitcher           |
| _____ 192. Lattice and Daisy Waterset, m           | _____ 225. Whirling Leaves Bowl, p                 |
| _____ 193. Jeweled Heart Tumbler, m                | _____ 226. Peacock Tail Compote, p                 |
| _____ 194. 6 Fashion Tumblers, m                   | _____ 227. Captive Rose Bowl, b                    |
| _____ 195. Blackberry Compote, m                   | _____ 228. Little Flowers Bowl, CRE, amy           |
| _____ 196. Robin Tumbler, m                        | _____ 229. Imperial Pansy Handled Nappy, m         |
| _____ 197. Stork and Rushes Tumbler, m             | _____ 230. Footed Two Flowers Bowl, b              |
| _____ 198. Lattice and Grape Tumbler               | _____ 231. Poppy Relish                            |
| _____ 199. Butterfly and Berry Tumbler, m          | _____ 232. Windflower Bowl, b                      |
| _____ 200. Waffleblock Basket, m                   | _____ 233. Hobstar Bowl, m                         |
| _____ 201. Acorn Bowl, m                           | _____ 234. Daisy and Poppy Bowl, m                 |
| _____ 202. Coinspot Compote, m                     | _____ 235. Blackberry Bowl, CRE, m                 |
| _____ 203. Jack in Pulpit Vase, m                  |  |







**FIRST CLASS**



Address Correction Requested  
PLEASE FORWARD

