

# CARNIVAL GLASS AUCTION

Saturday, June 11th 10:00 am

**Riverbend Auction Center**

Alderson, West Virginia

Selling the collection of Gil and Rena Longo of Northern Virginia. Super selection of nice glass, with a variety of patterns and colors. This collection has something for every collector, advanced or beginner. Mr. and Mrs. Longo have spent several years building such an outstanding collection. Several rare pieces are included in this auction along with many pieces having extra good color. **Mark your calendars and make plans to attend!**

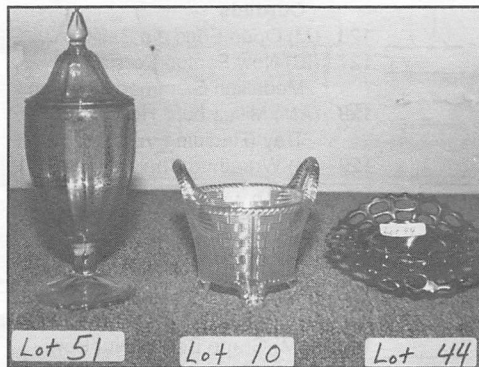
## Auctioneers Note:

**We expect to receive several quality consignment pieces after this listing.**

**\*Lot numbers without items have been reserved for late additions!**

**1-800-726-2897 • Fax 304-445-2900**

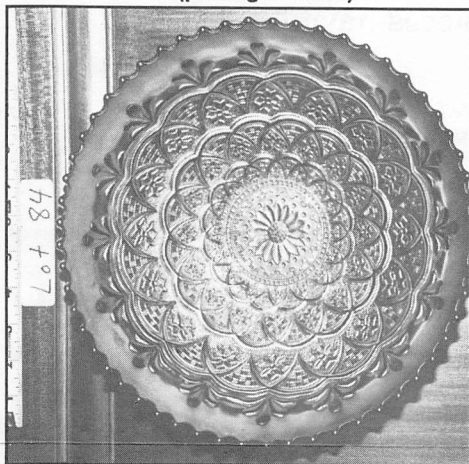
- | LOT # | DESCRIPTION  |
|-------|--|
| _____ | 1. (AM) Grape Delight Nut Bowl                             |
| _____ | 2. (W) Grape Delight Rose Bowl (chip on toe)               |
| _____ | 3. (AM) Pony Bowl  |
| _____ | 4. (AO) Blackberry Spray Ruffled Hat                       |
| _____ | 5. (G) 5 pc. Persian Medallion Berry Bowls                 |
| _____ | 6. (M) Thunderbird 5" Bowl                                 |
| _____ | 7. (M) Kangaroo 5" Bowl                                    |
| _____ | 8. (M) Panther 5" Ruffled Footed Bowl                      |
| _____ | 9. (B) Panther 5" Berry Bowl                               |
| _____ | 10. (IB) N. Round Bushel Basket (fantastic)                |
| _____ | 11. (B) Rustic 13" Vase                                    |
| _____ | 12. (Clam Broth) Leaf Chain IC Bowl                        |
| _____ | 13. (P) Rare 3 Fruit Medallion Meander Ext. Bowl           |
| _____ | 14. (AM) Question Marks Bon-Bon                            |
| _____ | 15. (M) Diamonds Water Pitcher (base chips)                |
| _____ | 16. (M) 2 Diamonds Tumblers                                |
| _____ | 17. (AM) Pansy 9" Ruffled Bowl                             |
| _____ | 18. (AM) Strutting Peacock Covered Sugar                   |
| _____ | 19. (G) Joe St. Clair Covered Dolphin (nice)               |
| _____ | 20. (M) Morning Glory 7" Vase                              |
| _____ | 21. (M) Blackberry Wreath 6" Ruffled Sauce (Radium Finish) |
| _____ | 22. (M) Wide Panel Jip 7" Vase                             |
| _____ | 23. (M) Columbia Whimsey; Flat Stemmed Plate               |
| _____ | 24. (M) Peacock & Urn Compote                              |
| _____ | 25. (M) Peacock & Urn Ruffled Compote                      |
| _____ | 26. (R) New Fenton Basket ACGA Souv.                       |
| _____ | 27. (M) Beaded Bullseye 8" Vase                            |
| _____ | 28. (M) Souvenir of Wash. DC Whimsey Cuspidor              |



- | LOT # | DESCRIPTION   |
|-------|---|
| _____ | 29. (M) Luster Rose 10" Bowl                                |
| _____ | 30. (M) Autumn Acorn 3-in-1 Edge Bowl                       |
| _____ | 31. (M) Orange Tree Compote                                 |
| _____ | 32. (Aqua) Open Edge 4 Sides Up (pinhead)                   |
| _____ | 33. (M) Stag & Holly Giant Rose Bowl                        |
| _____ | 34. (M) Water Lilly & Cattails Bon Bon                      |
| _____ | 35. (M) Double Stem Rose Footed Bowl                        |
| _____ | 36. (M) Water Lilly 10" Footed Bowl                         |
| _____ | 37. (G) N. Good Luck Ruffled Bowl                           |
| _____ | 38. (AM) Morning Glory 10" Vase                             |
| _____ | 39. (AM) Ripple 10" Vase                                    |
| _____ | 40. (G) N. Wide Panel 15" Vase                              |
| _____ | 41. (AM) Acorn 6 1/2" Bowl                                  |
| _____ | 42. (Vaseline/Lime Green) Unusual Persian Medallion Bon Bon |
| _____ | 43. (Amberina) Vintage Fernery                              |
| _____ | 44. (R) Open Edge Basket (Jip)                              |
| _____ | *45. _____  |
| _____ | 46. (PO) Wide Rib 9 1/2" Vase                               |
| _____ | 47. (M) Stag & Holly 11" Ruffled Bowl                       |
| _____ | 48. (B) N. Round Bushel Basket                              |

- | LOT # | DESCRIPTION  |
|-------|--|
| _____ | 49. (AO)) N. 4 Pillar Vase (beautiful color, chip on toe)        |
| _____ | 50. (M) Huge 18 1/2" Rustic Funeral Vase                         |
| _____ | 51. (Light Lavender) Rare Ice Crystals Covered Candy             |
| _____ | 52. (M) Pony bowl (beautiful)                                    |
| _____ | 53. (P) N. Blackberry Compote                                    |
| _____ | 54. (EB) N. Thin rib 10 1/2" Vase (nice color)                   |
| _____ | 55. (W) Fanciful Plate   |
| _____ | 56. (M) Cosmos & Cane Covered Sugar (chip on edge of lid)        |
| _____ | 57. Rare Millersburg 7 1/2" Cherry Plate Beautiful Satin Finish  |
| _____ | 58. (ELBL) Imp. Open Rose Sauce (very pretty)                    |
| _____ | 59. (M) Estate Mug   |
| _____ | 60. (G) Blackberry Wreath IC Bowl (Radium Finish)                |
| _____ | 61. (M) Little Barrel  |
| _____ | 62. (Smoke) Acanthus Bowl  |
| _____ | 63. (Pale Blue) Etched & Cut Irid. Goblet                        |
| _____ | 64. (M) N. 3 Fruits Plate  |
| _____ | 65. (AM) N. Drapery Rose Bowl (lovely golden iridescence)        |
| _____ | *66. _____   |
| _____ | 67. (EB) N. Peacocks Piecrust Edge Bowl (flake on edge)          |
| _____ | *68. _____   |
| _____ | 69. (AM) 1970 Chessie By Fenton Covered Candy                    |
| _____ | 70. (R) 1991 Chessie By Fenton Covered Candy                     |
| _____ | *71. _____   |
| _____ | 72. (P) Fishermans Mug Souvenir Gettysburg, PA (crack in handle) |
| _____ | 73. (P) Fishermans Mug Souvenir Harrisburg, PA                   |
| _____ | 74. (AM) Big Breakfast Cream & Open Sugar (lightly iridized)     |

LOT #	DESCRIPTION
75.	(B) Peacock & Grape Ruffled Collar Base Bowl (very pretty)
76.	<b>(Light Lavender) Rare Powder Box Intaglio</b>
77.	(AM) 3 Fruits Variant 12 Sided plate
78.	(B) Ribbon Tie 2" High Bowl or Plate w/3-in-1 Edge (crack)
79.	(G) Blackberry Wreath IC Bowl (Radium Finish)
80.	(M) Stag & Holly Giant Rose Bowl
81.	(M) Pulled Loop 11" Vase
82.	(B) Fruits & Flowers Stemmed Bon Bon
83.	(M) Dragon & Lotus IC Bowl
84.	<b>(Purple W/EB Iridescence) Persian Garden 11" IC Bowl Absolutely Fantastic Color (peeling on base)</b>

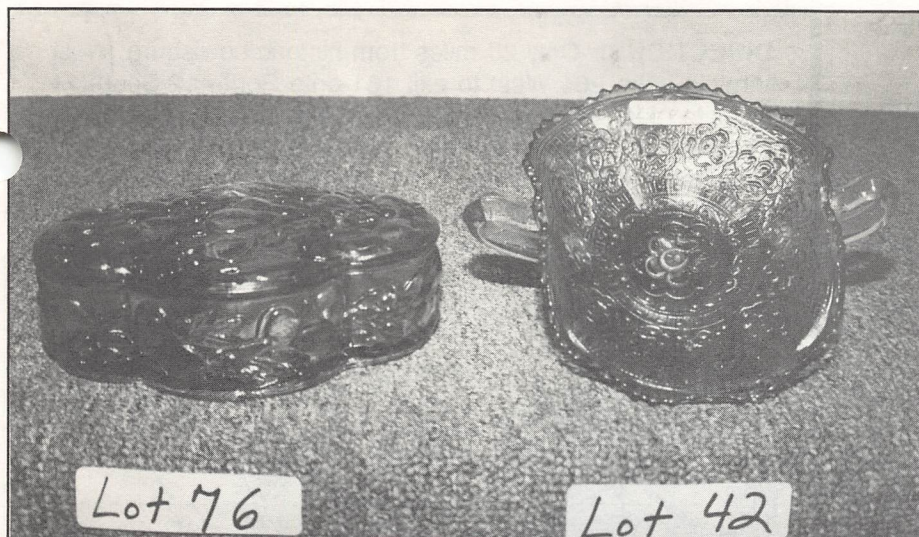


85.	(M) N. Dandelion Mug
86.	(M) Holly Compote
87.	(G) Heavy Grape 8" Plate
88.	<b>(M) Rare Marigold Engraved Fruit &amp; Flower Spittoon (maker unknown)</b>
89.	(M) Kittens Cup & Saucer
*90.	
91.	<b>(P) Rare Art Glass 12" Chop Plate Imp. Iron Cross (absolutely beautiful)</b>
92.	(G) Grape Wreath Multi-Star Variant Bowl (Radium Finish)
*93.	
94.	(M) Dragon & Lotus Ruffled Edge Bowl
*95.	
96.	<b>(M) Peacock &amp; Urn 10" IC Shape Bowl (fantastic)</b>
97.	<b>(G) Trout &amp; Fly 9" IC Bowl</b>
*98.	
*99.	
100.	(W) Double Stem Rose Bowl Dome Base Great Iridescence
*101.	
*102.	
103.	(M) Open Rose Plate (glows under black light)
104.	(M) Orange Tree 7 pc. Water Set (chips on feet)
105.	(M) Swirl Hobnail Rose Bowl (sm. internal crack)
106.	<b>(Opal) Puzzle Stemmed Bon Bon</b>
107.	(M) Open Edge Ruffled Basket Large Size

LOT #	DESCRIPTION
108.	<b>(P) Rare Butterfly &amp; Tuplit Square Ftd. Bowl (beautiful golden highlights)</b>
109.	(M) Daisy & Plume Stemmed Rose Bowl
110.	(P) N. Leaf & Beads Rose Bowl
111.	(M) Stag & Holly 9" Bowl
112.	(IB) Nippon Pie Crust Edge Bowl (flake)
113.	(R) 1992 Gibson Miniature Spittoon
*114.	
115.	(M) Pony Bowl
116.	(B) Fern Panels Ruffled Hat
117.	(B) Persian Medallion 8 1/2" Ruffled Bowl
118.	(AM) N. Grape & Cable Cup
119.	(B) Cherry Chain Bon Bon
120.	<b>(M) Trout &amp; Fly IC Shape Bowl (nice color)</b>
121.	<b>(M) Unusual Brides Silver Basket w/Marigold Bowl inside</b>
122.	(Irid) 8" Intaglio Plate; Clear w/Irid. (very unusual)
123.	(M) Parlor Panels 10" Vase
124.	(M) Souvenir Toothpick From San Angelo, TX
125.	<b>(Red Flash) Rare 2 Imp. Iron Cross Irid. Stemmed Cordials</b>
126.	(M) Open Edge Jip Basket
127.	(IB) New Fenton Persian Medallion Stemmed Bon Bon
128.	(AM) Millersburg Holly Card Tray (Radium Finish)
129.	(M) Wreathed Cherry 5 pc. Berry Set
130.	(M) Thistle & Thorn Ftd. Plate
131.	(M) Millersburg Blackberry Wreath 9" Bowl (nice)
132.	(M) Open Edge Basket 2 Sides Up
133.	(AM) Grape Delight Nut Bowl
134.	(Marigold Over Vaseline) Persian Medallion 4 Sides Up Saucer
135.	(M) Advertising Ashtray Old Hickory Bourbon
136.	(P) Wreath Cherry Banana Boat (heat crack)
137.	(M) N. Leaf & Beads Dome Ftd. Bowl
138.	(M) Fine Rib 10" Vase
139.	(P) Rays 11" 8 Ruffle Bowl
140.	(B) Windflower Plate (Roughness on collar base)
141.	(R) New Imp. E.W.R. Bi-cent. Goblet
142.	<b>(G) Millersburg Peacock &amp; Urn Mystery 8 1/2" Ruffled Bowl (great irid.)</b>
143.	(Hore Hound) N. Grape & Cable 5" Berry Bowl
144.	<b>(M) Millersburg Peacock &amp; Urn Mystery 8" IC Bowl (minor roughness on top edge)</b>
145.	(M) Imp. Grape Wine Decanter w/Stopper
146.	(M) Sailboats 6" Bowl
147.	(M) N. Luster Flute Bon Bon
148.	(M) Wreath of Roses Bon Bon
149.	(M) Bullseye 10" Vase

LOT #	DESCRIPTION
150.	(G) Diamond Ring Ruffled Berry Bowl
151.	(PO) Single Flower Framed 9" Ruffled Bowl
*152.	
*153.	
154.	(M) Windflower Plate (roughness on collar base)
*155.	
*156.	
157.	(M) Fish Scale & Beads 5" Bowl
158.	(AM) Open Rose 8" Bowl
159.	(M) Grape & Cable Spatula Ftd. Bowl
160.	(P) Fine Cut & Roses Candy Dish
*161.	
162.	(B) Vintage 10" Bowl
163.	(M) Open Rose Bowl (chip)
164.	(Olive Green) Louisa Ftd. Candy
*165.	
166.	(G) Imp. Grape Cup
*167.	
168.	(M) Grape Delight Rose Bowl (chips)
169.	(PO) Single Flower 3-in-1 Edge Bowl
170.	(M) Peacock & Grape Spatula Ftd. IC Bowl (nice color)
171.	(M) Open Rose Creamer
172.	(Aqua) Persian Medallion Bon Bon
173.	(M) Imp. Diamond Ring Bowl
174.	(M) Thumb Print Creamer
175.	(M) Northern Star Card Tray
176.	(M) Morning Glory 17" Funeral Vase
177.	(M) ABC Stork Bowl (roughness)
178.	(B) Peacock & Urn 9" Ruffled Bowl (nice)
179.	(M) 3 Luster rose Tumblers
*180.	
181.	(R) New Fenton Persian Medallion Lg. Basket
182.	(AM) 2 Diamond Lace Tumblers
*183.	
*184.	
185.	(BL AM) N. Thin Rib 13" Mid-Size Funeral Vase
186.	(G) New Imp. 3-in-one Variant Toothpick
*187.	
*188.	
189.	(M) 4 Peacock at the Fountain Tumblers
190.	(M) Car Vase
191.	(M) Sm. Apple Blossoms Bowl
192.	(M) Twins 2 pc. Ruffled Fruit Bowl
193.	3 Marigold Frogs, 1 Gr., & Bead & Block Bowl
194.	(B) N. Enameled Cherries Tumbler (chips on base)
195.	(M) 2 Paneled Shot Glasses (appears to have Heisey mark)
196.	(PO) Target 13" Vase
197.	Windflower 8" Bowl (radium)
198.	(M) Devilbess Atomizer
199.	(M) Windflower 8" Ruffled Bowl
200.	(M) Eagle Bank
201.	(R) Bob St. Clair 1776-1976 Bi-cent. Toothpick w/Nixon





LOT #	DESCRIPTION
202.	(Lg. M) Imp. Grape 8 1/2" Stippled Plate
203.	(Clear) Shrine 1909 Louisville, Ky Champagne
204.	(R Flashed) Shrine 1908 St. Paul Wine
205.	(Clear) Shrine 1909 Louisville, Ky Champagne
206.	(Clear) Shrine 1911 Rochester, NY Champagne
207.	(Clear) Shrine 1910 New Orleans Champagne
208.	(AM) Ribbon Tie 8" Bowl
209.	(R) Joe St. Clair Indian Toothpick
210.	(B) Dragon & Lotus IC Flat Bowl
*211.	
212.	(PO) Pulled Loop 10" Vase
*213.	
*214.	
*215.	
216.	(P) N. Basketweave Hand Grip Bowl
217.	(AM) N. Rays 8" Ruffle Bowl
*218.	
219.	(B) Persian Medallion Sauce
*220.	
221.	<b>(AM) Rare Advertising Pc. Fenton Butterflies Bon Bon w/Horlacher Name Embossed On Bottom</b>
222.	(G) Stretch Glass Fan Vase
223.	(B) Beaded Basket
224.	(M) Orange Tree Wine Goblet
225.	(Clear) Swirl Irid. Shot Glass
*226.	
227.	(M) 3 Wide Panel Goblets
228.	(Teal) Concave Flute Vase
229.	<b>(EB) Grape &amp; Cable Stippled Bon Bon (super)</b>
230.	(P) Purple Bead Necklace
231.	(B) Open Edge Basket
232.	(M) Fashion Punch Set w/4 Cups
233.	(M) Open Edge Basket
234.	(R) Bob St. Clair 1776-1976 Bi-cent. Toothpick w/Nixon
235.	(M) Open Edge basket
236.	(B) Fenton Coin Dot Bowl
237.	(M) Water Lilly Whimsey
238.	(Lt. B) Unusual Beehive Honey Pot w/Cover

LOT #	DESCRIPTION
239.	(M) Dragon & Lotus Ruffled Bowl
240.	(M) Windflower 9" Bowl (chip)
241.	(M) Pansy Ruffled Bowl
242.	(Celest. B) Imp. Wide Panels Covered Candy
243.	(M) Imp. Grape 9" Ruffled Plate
244.	(R) New Elks Paper Weight
245.	(BL AM) N. Wildrose Bowl
246.	(M) Floral Optic Ftd. Bowl
247.	(G) Vintage 5 1/2" Saucer
248.	(M) Orange Tree Mug
249.	(P) New Peacock Tail Vase
250.	(IB) Wide Panel? 6" Goblet?
*251.	
252.	(B) 2 Beaded Shoe Buckles
253.	(M) Boggy Bayou 5 1/2" Vase
254.	(M) Boggy Bayou 5" Vase
255.	(M) Vintage Nut Bowl
256.	(G) Imp. Grape 8 1/2" Bowl
257.	(BL Am) Pedal Stemmed Bowl
258.	(M) Twins 2 pc. Fruit Bowl
259.	(PO) File & Fan 8" Pedestal Bowl
260.	(PO) Dogwood Spray Pedestal Bowl
261.	(M) Lady's Spittoon (Heisey 747)
262.	(Irid. Milk Glass) Holm Spray Atomizer
263.	(M) Holly Hat
264.	(PO) Border Plants Hand Grip Bowl
265.	(PO) Leaf Rays Nappy
266.	(B) 2 Enameled Cherry Tumblers
267.	(M) Water Lilly & Cattails Toothpick
268.	(M) Engraved Grape Goblet
269.	(M) Fish Scales & Beads Bowl
270.	(BI) Vintage 7" Plate
271.	(AM) N. Grape Leaves 9" Bowl
272.	(M) Windflower 8" Ruffled Plate
273.	(M) E.W.R. 1972 Arizona Souv. Plate
274.	(M) 2 Beaded Shoe Buckles
275.	(M) Large Ashtray
276.	(M) Scroll Embossed Compote
277.	(M) Sm. Basketweave Basket
278.	(AM) Louisa Rose Bowl
279.	(M) Water Lilly & Cattail Bon Bon
280.	(Smoke) Windmill 8" Bowl

LOT #	DESCRIPTION
281.	(M) (2 pcs.) Stork & Rushes Damaged, Water Lilly & Cattail Tumbler
282.	(M) Blackberry Spray Hat
283.	(Lt. M) Luster Rose 8" Bowl
284.	(M) 2 Candy Jars Black Bottom? (clear)
285.	(M) Columbia Compote (chip)
286.	(PO) 2 Dugan Coin Spot Compotes
287.	(G) Rays Stemmed Compote
288.	(M) Windmill 8" Plate
289.	(PO) Fish Scale & Beads 7" Bowl
290.	(Pink) Shell Card Tray
291.	2 Vases

## RIVERBEND AUCTION CO.

Alderson, WV

(304) 445-2897 • 1-800-726-2897

### June & July Schedule

Friday, June 3, 10:00 am  
Gilchrist Estate  
Pickaway, WV

Wednesday, June 8, 10:00 am  
Pettit Estate  
White Sulphur Springs, WV

Friday, June 10, 5:00 pm  
Antique & Collectible Auction  
Riverbend Auction Center

Saturday, June 11, 10:00 am  
Carnival Glass Auction  
Riverbend Auction Center

Saturday, June 18  
Antique & Collectible Auction  
Riverbend Auction Center

Friday and Saturday  
July 1st & 2nd  
10:00 am - 9:00 pm  
Antique Show & Sale  
Riverbend Auction Center  
Dealer Space Available  
Call for details

Now Accepting Quality  
Carnival Glass and Antiques  
For Upcoming Auctions



**NEAREST AIRPORT:** 3 Miles North of Lewisburg  
US Air (304) 647-5100

**ACCOMMODATIONS:** Brier Inn, Lewisburg  
304-645-7722  
Riverview Motel, Alderson  
304-445-2550

**10% Buyers Premium will be Added to Final Bids.**

Absentee Bids Accepted and Bid Competitively  
(20% Deposit Required)

**PREVIEW:**

Friday from 3:00 p.m. to 8:30 p.m.

Saturday doors open 8:00 a.m.

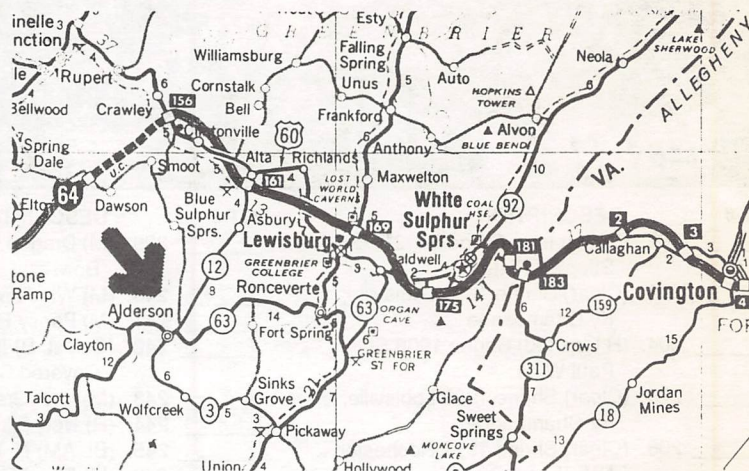
Auction begins 10:00 a.m.

**TERMS:** Cash, M/C, Visa, American Express, Discover Card, travelers checks or approved check. No out-of-state checks unless accompanied by current bank letter of credit addressed to Riverbend Auction Co. Tax exempt dealers must furnish exemption number. WV state sales tax of 6% must be charged. All items sold as is where is without guarantees or warranties. All descriptions subject to error.

**FAX & MAIL BIDS:** Fax bids may be sent by calling (304) 445-2900. All Fax bids must be paid by approved credit cards. Deadline for faxed bids is Friday, June 10.

**ALL MAIL BIDS:** Must be accompanied by a 20% deposit, or an approved credit card. Mail bids should be no later than June 9. All fax and mail bids must pay for shipping and insurance. **POST AUCTION PRICE CATALOGS \$5.00 EACH.**

**DIRECTIONS:** Only 20 miles from historic Lewisburg, West Virginia, take I-64 West to exit 161 onto Route 12 South 11 miles to Alderson, from Valley of Virginia, take I-81 South to I-64 West (1:45 from Lexington, Virginia) to exit 161. From Charleston, West Virginia (2hrs.) I-64 East to exit 161. From Charlotte, North Carolina (4hrs.) I-77 North to Princeton, West Virginia exit take US 460 East to Rich Creek, Virginia to US 219 to Peterstown, West Virginia take Route 12 North (to Alderson approximately 30 miles).



*"We're Sold on Auction"*

**RIVERBEND AUCTION COMPANY**

P.O. Box 800 • 103 South Monroe Street  
Alderson, West Virginia 24910

**(304) 445-2897 • 1-800-726-2897**

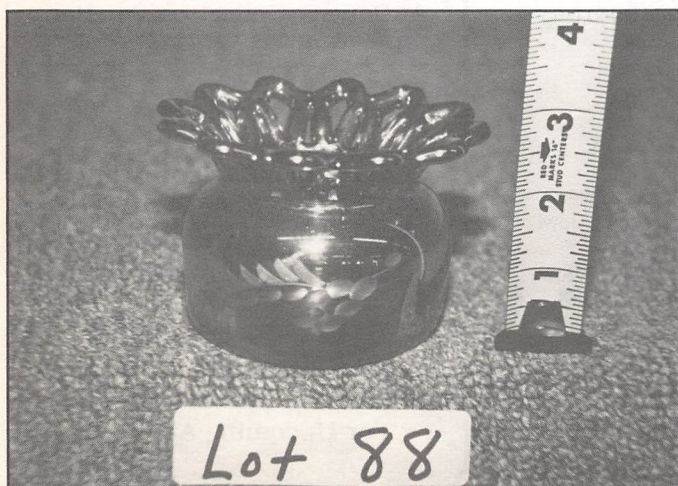
Randy S. Burdette • WV #927 • VA #1797

*"When you want it done right!"*



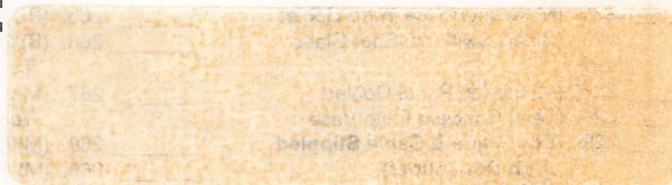
First Class  
**PAID**  
Permit #3  
Alderson, WV  
24910

**First Class  
Mail**



**Rare Marigold Spittoon,  
unknown maker**

**T  
O:**



**Antique & Collectible Auction**  
5:00 p.m. - Friday, June 10th

**CARNIVAL GLASS AUCTION**  
10:00 a.m. - Saturday, June 11th