



AUCTION SERVICE

## 1994 Lincoln Land Convention Auction

**Friday & Saturday,  
June 10 & 11, 1994**

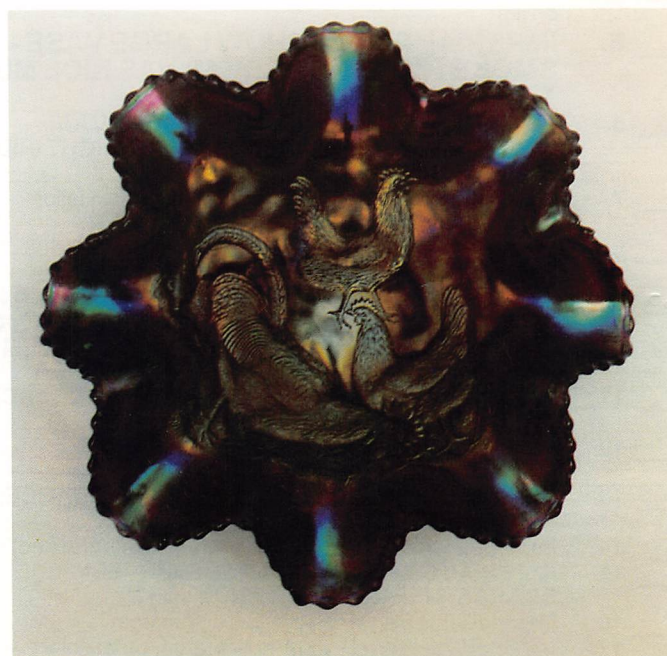
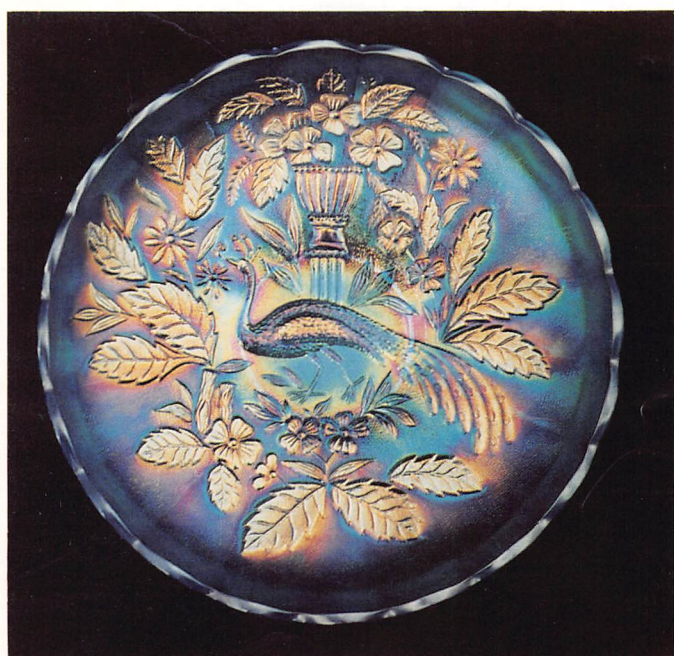
6:30 pm, Friday, Lots 1 - 155, 4:00 pm preview  
9:00 am, Saturday, Lots 156 - end, 8:00 am preview

at the **Midway Hotel - Airport**

5105 S. Howell Ave., Milwaukee, WI 53207

(take airport exit off I-94, then Howell Ave. exit)

**(414) 769-2100**





BURNS AUCTION SERVICE is pleased to bring you the 1994 Lincoln Land Convention Auction. This year's auction features the collection of Ed & June Tomczak from Racine, Wisconsin. Their collection has to rate as one of the finest in the mid-west, if not the country - a great Northwood selection and top examples of all other major manufacturers. Probably one of the best selections to be sold the rest of the year - hope to see ya there!

The auction is being held in conjunction with the 1994 Lincoln Land Carnival Glass Club's convention. The activities run from Thursday, June 9 through the banquet held on Saturday evening the 11th (and just wait till you see the favors!). So be sure to attend if you have the chance - you'll never regret it! For further information contact Rick Kojis at (414) 327-0321 or Tom Mordini at (414) 235-4407.

The Midway Hotel - Airport will host the event. Their phone number is (414) 769-2100. Just take exit 318 (airport) off I-94 and take the Howell Ave. exit. By the time this brochure gets to you, most of the rooms at the Midway will be full. Just in case, there are 2 other motels located in the vicinity. The Motel 6 (5037 S. Howell Ave.) is located right next door. They can be reached at (414) 482-4414. There is also a Super 8 just south at 5253 S. Howell Ave. and their number is (414) 481-8488. They are all pretty close so you're not too far from the action. See ya there!

Mail Bids due by Thursday, June 9, 1994.

For further information or if we can be of assistance, call or write:

## Burns Auction Service

Tom Burns  
109 E. Steuben St.  
Bath, New York 14810  
(607) 776-7942

Bill Richards  
44 Water St.  
Poland, Ohio 44514  
(216) 757-2001

Bill Richards III  
524 Poland Ave.  
Struthers, Ohio 44471  
(216) 755-2620

WISCONSIN LICENSE APPLIED FOR

Mail Bids honored under the following conditions:

1. No deposit required. Bidders will take full responsibility to honor any and all bids we execute for them. Payment in full plus postage and handling required after notification and before we ship any item to them.
2. **Items are bid on in perfect condition with average or above average iridescence OR as listed in the brochures. Bids will not be carried out when damage on an item has been found during the auction.**
3. Successful bidders will be notified by collect call from the auctioneer (so be sure to include phone number).
4. Phone inquiries about the glass or any other questions are welcome.
5. All non-successful bidders will receive a result summary in the mail. Results of all bids will be provided.
6. If you have some other person at the auction bidding for you, they must pay for the item before taking it.
7. Mail bids due by Thursday, June 9, 1994.

- |                |  |                  |  |
|----------------|--|------------------|--|
| _____ 1.       | Corning Pyrex Sombrero Large Insulator - Mari.   | _____ 22.        | Imperial Flute (or Wide Panel) 7 pc. Ruffled Punch Set - Helios Green (very rare set; not often sold in this color; a couple of tiny bruises in bowl)                        |
| _____ 2.       | Corning Pyrex Large #453 Insulator (or door stop) - Mari.  | _____ 23.        | <b>IMPERIAL LOGANBERRY VASE - GREEN (SCARCE; PRETTY NICE COLOR)</b>  |
| _____ 3.       | 7 - 8" Imperial Ripple Swung Vase - Mari. (bottom damaged)   | _____ 24.        | 5 1/4" Australian Kingfisher Ruffled Sauce - Pur. (very scarce; (#Rd 4184)   |
| <u>80</u> 4.   | Imperial Hobstar Covered Cookie Jar - Mari. (tiny bruise on lid)   | <u>20.00</u> 25. | <b>N PEACOCK AT THE URN LARGE ICE CREAM BOWL - SAPPHIRE (FANTASTIC ITEM; ONE OF THE FINEST EXAMPLES KNOWN - YOU CAN'T GET BETTER)</b>  |
| _____ 5.       | <b>IMPERIAL POPPY SHOW LARGE VASE - SMOKE (VERY RARE ITEM; HAS NICE MULTI-COLORED IRID.)</b>   | _____ 26.        | <b>N PEACOCK AT THE URN LARGE ICE CREAM BOWL - LIME ICE GREEN (VERY RARE BASE GLASS - A KEY COLOR FOR THIS ITEM; NICE!)</b>  |
| _____ 6.       | <b>IMPERIAL POPPY SHOW LARGE VASE - MARI. (VERY DESIRABLE; HAS FANTASTIC BRIGHT IRID. - REDS, BLUES AND YELLOWS)</b>   | _____ 27.        | <b>N PEACOCK AT THE URN LARGE ICE CREAM BOWL - ICE GREEN (VERY RARE; ONE OF THE BETTER EXAMPLES; GREAT MULTI-COLORED IRID; SUPER!)</b>                                       |
| _____ 7.       | Imperial Grape Wine Decanter and Stopper - Helios Green (scarce; silvery)  | _____ 28.        | <b>N PEACOCK AT THE URN LARGE ICE CREAM BOWL - ICE BLUE (RARE ITEM WITH SUPER MULTI-COLORED IRID.; A GREAT EXAMPLE)</b>  |
| _____ 8.       | Imperial Grape Wine Decanter and Stopper - Mari.   | _____ 29.        | <b>N PEACOCK AT THE URN LARGE ICE CREAM BOWL - WHITE (VERY SCARCE; GREAT RED AND BLUE IRID.; SUPER COLOR)</b>  |
| _____ 9.       | Imperial Poinsettia Milk Pitcher - Dk. Mari. (cracked)   | _____ 30.        | <b>N PEACOCK AT THE URN LARGE ICE CREAM BOWL - GREEN (FANTASTIC EXAMPLE - THE IRID. JUST WON'T QUIT; SUPER RARE AND DESIRABLE; THE COLLAR BASE HAS GRINDING AROUND EDGE)</b> |
| <u>160</u> 10. | <b>IMPERIAL WINDMILL MID-SIZE WATER PITCHER - EXPERIMENTAL GUN METAL LUSTRE OVERLAY ON MARI. (EXTREMELY RARE; VERY UNUSUAL ITEM WITH THIS OVERLAY; NEVER SEEN ANOTHER)</b> | _____ 31.        | <b>N PEACOCK AT THE URN ALL OVER STIPPLED LARGE ICE CREAM BOWL - RENNIGER BLUE (EXTREMELY RARE COLOR - AN ODD TINT, SILVERY HIGHLIGHTS)</b>                                  |
| _____ 11.      | <b>IMPERIAL CORN BOTTLE - SMOKE (VERY SCARCE; NICE BLUE AND RED HIGHLIGHTS)</b>  | <u>20.00</u> 32. | <b>N PEACOCK AT THE URN ALL OVER STIPPLED LARGE ICE CREAM BOWL - BLUE (FANTASTIC BOWL; RED AND YELLOW BACKGROUND WITH RED AND BLUE HIGHLIGHTS ON PATTERN; SUPER!)</b>        |
| _____ 12.      | <b>IMPERIAL CORN BOTTLE - HELIOS GREEN (SCARCE ITEM)</b>   |                  |  |
| _____ 13.      | <b>IMPERIAL CORN BOTTLE - MARI. (VERY SCARCE; NICE AVERAGE COLOR)</b>  |                  |  |
| _____ 14.      | Imperial Diamond Lace Water Pitcher - Pur. (cracked)   |                  |  |
| _____ 15.      | <b>IMPERIAL LITTLE BARREL - SMOKE (VERY SCARCE; GREAT COLOR AND IRID.)</b>   |                  |  |
| _____ 16.      | Imperial Little Barrel - Helios Green (scarce)   |                  |  |
| _____ 17.      | Imperial Little Barrel - Dk. Mari. (scarce; great color)   |                  |  |
| _____ 18.      | Imperial Grape 9 pc. Punch Set - Mari. (attractive set)  |                  |  |
| _____ 19.      | Imperial Fashion Ruffled 8 pc. Punch Set - Mari. (nice set)  |                  |  |
| _____ 20.      | <b>IMPERIAL EMBOSSED SCROLL FLAT PLATE - PUR. (VERY SCARCE; GREAT COLOR AND IRID.)</b>   |                  |  |
| _____ 21.      | Imperial Embossed Scroll Flat Plate - Green (scarce)   |                  |  |



1600 33. N PEACOCK AT THE URN ALL OVER STIPPLED LARGE ICE CREAM BOWL - SMOKEY HONEY AMBER (EXTREMELY RARE TINT; NOT MANY KNOWN - UNUSUAL)

1300 34. N PEACOCK AT THE URN ALL OVER STIPPLED LARGE ICE CREAM BOWL - TRUE PASTEL MARI. (SUPER COLOR; VERY FLAT WITH FANTASTIC RED AND BLUE HIGHLIGHTS)

35. N PEACOCK AT THE URN LARGE ICE CREAM BOWL - DK. PUR. (VERY SCARCE AND DESIRABLE; HAS ELEC. BLUE HIGHLIGHTS)

36. N PEACOCK AT THE URN LARGE ICE CREAM BOWL - PASTEL MARI. (RARE - GREAT YELLOW IRID. WITH BLUE AND PINK HIGHLIGHTS)

37. N Peacock at the Urn Large Ice Cream Bowl - Mari. (scarce; nice color)

38. N Peacock at the Urn All Over Stippled Large Ice Cream Bowl - Custard / Nutmeg (very scarce; not carnival; nice decor.)

39. N Peacock at the Urn Large Ruffled Bowl from Master Ice Cream Bowl - Mari. (very rare shape for this item; super color)

1500 40. N PEACOCK AT THE URN ALL OVER STIPPLED IND. ICE CREAM BOWL - RENNIGER BLUE (A KEY COLOR; VERY HARD TO FIND; VERY DESIRABLE)

41. N PEACOCK AT THE URN IND. ICE CREAM BOWL - EMERALD GREEN (SUPER COLOR AND IRID.; A GREAT EXAMPLE)

42. N PEACOCK AT THE URN IND. ICE CREAM BOWL - ICE GREEN (VERY SCARCE; IRID. A BIT SILVERY)

43. N PEACOCK AT THE URN IND. ICE CREAM BOWL - ICE BLUE (VERY SCARCE; NICE DARK COLOR WITH BLUE AND PINK HIGHLIGHTS)

44. N PEACOCK AT THE URN IND. ICE CREAM BOWL - WHITE (VERY SCARCE; HAS GOLD HIGHLIGHTS)

45. N Peacock at the Urn Ind. Ice Cream Bowl - Blue (very scarce; nice multi-colored irid.)

46. N Peacock at the Urn Ind. Ice Cream Bowl - Pur. (scarce; gold irid.)

47. N PEACOCK AT THE URN IND. ICE CREAM BOWL - PASTEL MARI. (ABSOLUTELY FANTASTIC! UNBELIEVEABLE PINK AND BLUE IRID.)

48. N Peacock at the Urn Ind. Ice Cream Bowl - Dk. Mari. (scarce; great color)

49. N Peacock at the Urn Ind. Ice Cream Bowl - Custard / Nutmeg (scarce; base has been slightly ground)

50. 6" N PEACOCK AT THE URN PLATE FROM IND. ICE CREAM BOWL - MARI. (RARE; FLATTER THAN MOST OTHERS)

51. N PEACOCKS PLATE WITH RIBBED EXTERIOR - ELEC. BLUE (SUPER COLOR AND IRID.; VERY DESIRABLE)

52. N PEACOCKS PLATE WITH RIBBED EXTERIOR - ICE GREEN (SCARCE AND VERY DESIRABLE; NICE COLOR AND IRID.)

53. N PEACOCKS PLATE WITH RIBBED EXTERIOR - MARI. (SCARCE AND DESIRABLE; NICE COLOR AND IRID.)

3000 54. N PEACOCKS RUFFLED BOWL WITH RIBBED EXTERIOR - POWDER BLUE OPAL. (FANTASTIC ITEM; VERY RARE BASE COLOR; SUPER COLOR AND IRID.)

55. N PEACOCKS RUFFLED BOWL WITH RIBBED EXTERIOR - AQUA / MARI. OVERLAY (RARE COLOR; ONE OF THE TOUGHEST TO FIND; NICE IRID.)

2200 56. N PEACOCKS RUFFLED BOWL WITH RIBBED EXTERIOR - SMOKE (EXTREMELY RARE; VERY DESIRABLE; NOT TOO MANY SOLD)

57. N PEACOCKS RUFFLED BOWL WITH RIBBED EXTERIOR - ICE GREEN (RARE; NICE COLOR AND IRID.)

58. N PEACOCKS RUFFLED BOWL WITH RIBBED EXTERIOR - ICE BLUE (ALWAYS IN DEMAND; NICE COLOR AND IRID.)

59. N PEACOCKS RUFFLED BOWL WITH RIBBED EXTERIOR - WHITE (VERY SCARCE; NOT AROUND WHEN YOU WANT ONE)

60. N PEACOCKS RUFFLED BOWL WITH RIBBED EXTERIOR - AQUA OPAL. (VERY DESIRABLE; A NICE EXAMPLE OF THE OL' STAND-BY!)

61. N PEACOCKS RUFFLED BOWL WITH RIBBED EXTERIOR - GREEN (RARE ITEM; REALLY NICE COLOR AND IRID.; A NICE EXAMPLE)

62. N Peacocks Ruffled Bowl with Ribbed Exterior - Blue (very scarce; nice color and irid.)

63. N Peacocks Ruffled Bowl with Ribbed Exterior - Pur. (very scarce; another nice example)

64. N Peacocks Ruffled Bowl with Ribbed Exterior - Amy. (scarce; nice color and irid.)

65. N Peacocks Ruffled Bowl with Ribbed Exterior - Mari. (nice color and irid.; scarce)

66. N PEACOCKS RUFFLED BOWL WITH RIBBED EXTERIOR - CUSTARD (NOT CARNIVAL BUT VERY RARE; ONLY A FEW AROUND)

67. N Peacocks Ruffled Bowl with Ribbed Exterior - Blue Opal. (not carnival; nice color and irid.)

68. N PEACOCK AT THE FOUNTAIN PUNCH BOWL AND BASE - PUR. (VERY SCARCE; A VERY DESIRABLE SET)

2600 69. N PEACOCK AT THE FOUNTAIN STEMMED RUFFLED COMPOTE - AQUA OPAL. (EXTREMELY RARE; SUPER COLOR AND IRID.; HAS A COUPLE OF MANUF. SPLITS ON EDGE)

1700 70. N PEACOCK AT THE FOUNTAIN STEMMED RUFFLED COMPOTE - ICE GREEN (VERY RARE AND HAS GREAT COLOR AND IRID.)

1300 71. N PEACOCK AT THE FOUNTAIN STEMMED RUFFLED COMPOTE - ICE BLUE (ANOTHER EXCELLENT EXAMPLE; GREAT COLOR AND IRID.)

72. N PEACOCK AT THE FOUNTAIN STEMMED RUFFLED COMPOTE - WHITE (VERY SCARCE; IRID. IS A BIT SILVERY)

73. N PEACOCK AT THE FOUNTAIN STEMMED RUFFLED COMPOTE - BLUE (RARE; NICE MULTI-COLORED IRID.; VERY DESIRABLE)

74. N PEACOCK AT THE FOUNTAIN STEMMED RUFFLED COMPOTE - PUR. (RARE; VERY TOUGH TO FIND IN THIS COLOR)

75. N PEACOCK AT THE FOUNTAIN STEMMED RUFFLED COMPOTE - MARI. (RARE AND UNDERPRICED; GREAT COLOR AND IRID.)

76. N Grape Arbor Tankard Water Pitcher - Dk. Mari. (scarce; nice dark color top to bottom)

77. N Grape Arbor Tumbler - Mari. (nice color and irid.)

78. N Poppy Show Plate - Mari. (rare; has fantastic yellow irid. with red and blue highlights; small chip on base)

79. N Poppy Show Ruffled Bowl - Pastel Mari. (great multi-colored irid.; chip on base)

4750 80. N G & C MASTER 10 PC. PUNCH SET - GREEN (EXTREMELY RARE SET; NICE SATINY FINISH; A MASSIVE ITEM)

81. N G & C LARGE ICE CREAM BOWL WITH BASKETWEAVE EXTERIOR - ICE BLUE (SUPER COLOR AND IRID.; VERY DESIRABLE AND RARE)

82. N G & C Large Ice Cream Bowl with Basketweave Exterior - White (very scarce; nice irid.)

83. N G & C Large Ice Cream Bowl with Basketweave Exterior - Pur. (nice example; nice color and irid.)

83A. N G & C Large Ice Cream Bowl with Basketweave Exterior - Mari. (nice color and irid.)

84. N G & C Plate with Basketweave Exterior - Pur. (scarce; has red and blue highlights)

85. N G & C VARIANT BOWL WITH PIE CRUST EDGE AND RIBBED EXTERIOR - AQUA OPAL. (VERY RARE; OPAL. ON EDGE WITH GOLD HIGHLIGHTS)

500 86. N G & C FTD. BANANA BOAT - ICE GREEN (RARE; GREAT COLOR & IRID.; VERY DESIRABLE)

87. N G & C ftd. Banana Boat - Pur. (scarce; nice color and irid.)

88. N G & C ftd. Banana Boat - Dk. Mari. (scarce; really nice example)



- 2400 89. N WISHBONE CHOP PLATE WITH BASKETWEAVE EXTERIOR - DK., DK. MARI. (ONE OF THE FLATTEST AND MOST BEAUTIFUL EXAMPLES I'VE SEEN)
90. N ROSE SHOW RUFFLED BOWL - GREEN (VERY RARE; VERY DESIRABLE; GREAT MULTI-COLORED IRID.)
91. N ROSE SHOW RUFFLED BOWL - ICE BLUE OPAL. (VERY RARE; AN ODD TINT; A DIFFICULT ITEM TO FIND)
92. N ROSE SHOW RUFFLED BOWL - AQUA OPAL. (RARE AND ALWAYS DESIRABLE; NICE OPAL. AND IRID.)
93. N ROSE SHOW RUFFLED BOWL - ICE GREEN (RARE; NICE BASE COLOR AND REALLY NICE IRID.)
94. N Rose Show Low Ice Cream Shaped Bowl / Plate - White (scarce; nice color and irid.)
95. N Rose Show Plate - Blue (nice color; rare; has epoxy spot on one rose)
96. N Rose Show Plate - Dk. Mari. (nice dark color; rare; has small chip on one rose)
97. N NIPPON RUFFLED BOWL WITH RIBBED EXTERIOR - ICE GREEN (RARE; NICE COLOR AND REALLY NICE IRID.)
98. N NIPPON RUFFLED BOWL WITH PIE CRUST EDGE AND RIBBED EXTERIOR - ICE BLUE (VERY SCARCE; VERY NICE COLOR AND IRID.)
99. N Nippon Ruffled Bowl with Basketweave Exterior - White (scarce with this exterior pattern; nice irid.)
- 14000 100. N CORN HUSK VASE - PUR. (WHAT CAN YOU SAY!?! THIS IS ONE ITEM EVERYONE WOULD LOVE TO HAVE - A SUPER RARITY!)
101. N CORN VASE WITH STALK BASE - AQUA OPAL. (EXTREMELY RARE, EXTREMELY DESIRABLE; MORE OF A BLUE OPAL.; SUPER OPAL.; REALLY NICE)
102. N CORN VASE WITH STALK BASE - TEAL BLUE (VERY RARE; A KEY COLOR; NICE IRID. AND VERY DESIRABLE)
103. N CORN VASE WITH STALK BASE - ICE BLUE (VERY RARE COLOR; NICE AND DARK; A SUPER ITEM)
104. N CORN VASE WITH STALK BASE - POP BOTTLE AQUA WITH MARI. OVERLAY (UNUSUAL COLOR AND TINT; NOT MANY AROUND)
105. N CORN VASE WITH STALK BASE - MARI. (SUPER ITEM; VERY SCARCE COLOR)
106. N CORN VASE WITH STALK BASE - PASTEL MARI. (RARE; A TRUE EXAMPLE OF A REALLY SCARCE COLOR)
107. N CORN VASE WITH STALK BASE - DK. GREEN (RARE AND VERY DESIRABLE; NICE COLOR AND IRID.)
108. N CORN VASE WITH STALK BASE - OLIVE GREEN (AN ODD COLOR NOT OFTEN OFFERED; VERY SCARCE)
109. N CORN VASE WITH STALK BASE - PUR. (SCARCE; NICE COLOR AND IRID.)
110. N CORN VASE WITH STALK BASE - BLACK AMY. (A REALLY DARK EXAMPLE; HAS SILVERY IRID.)
111. N CORN VASE WITH PLAIN BASE - PUR. (SCARCE; NICE COLOR AND IRID.)
112. N CORN VASE WITH PLAIN BASE - ICE GREEN (SCARCE; NICE COLOR AND REALLY NICE IRID.)
113. N CORN VASE WITH PLAIN BASE - CLEAR WHITE (VERY UNUSUAL ITEM - NOT FROSTY BUT HAS SUPER IRID.; I HAVEN'T SEEN ANOTHER)
114. N CORN VASE WITH PLAIN BASE - FROSTY WHITE (SCARCE; NICE FROSTY COLOR AND IRID.)
- 4000 115. N HEART AND FLOWERS STEMMED RUFFLED COMPOTE - MARI. / CUSTARD (A SUPER, SUPER NORTHWOOD RARITY; GREAT COLOR AND GREAT IRID.; DON'T LET THIS ONE GET BY YA!)

- 3700 116. N HEART AND FLOWERS STEMMED RUFFLED COMPOTE - POWDER BLUE OPAL. (ANOTHER EXTREMELY RARE EXAMPLE; A VERY DIFFICULT ITEM TO FIND - SUPER!)
117. N HEART AND FLOWERS STEMMED RUFFLED COMPOTE - AQUA OPAL. (RARE AND VERY DESIRABLE; HAS A BUTTERSCOTCH OVERLAY)
- 1650 118. N HEART AND FLOWERS STEMMED RUFFLED COMPOTE - GREEN (VERY RARE AND DESIRABLE; HAS A MARI. OVERLAY)
- 1700 119. N HEART AND FLOWERS STEMMED RUFFLED COMPOTE - RENNINGER BLUE (SUPER SCARCE COLOR WITH GREAT MULTI-COLORED IRID.)
120. N HEART AND FLOWERS STEMMED RUFFLED COMPOTE - BLUE (SCARCE; NICE COLOR, IRID. A BIT SILVERY)
121. N HEART AND FLOWERS STEMMED RUFFLED COMPOTE - BLACK AMY. (VERY SCARCE WITH FANTASTIC BLUE IRID.; A GREAT EXAMPLE)
122. N HEART AND FLOWERS STEMMED RUFFLED COMPOTE - PUR. (VERY SCARCE AND DESIRABLE; HAS GOLDISH IRID.)
- 1200 123. N HEART AND FLOWERS STEMMED RUFFLED COMPOTE - LAVENDER (A VERY RARE ITEM; A TOUGH COLOR WITH FANTASTIC BLUE HIGHLIGHTS)
124. N HEART AND FLOWERS STEMMED RUFFLED COMPOTE - ICE BLUE (RARE COLOR WITH NICE IRID.)
125. N HEART AND FLOWERS STEMMED RUFFLED COMPOTE - LT. ICE BLUE (ODD LIGHT TINT; VERY SCARCE)
- 2100 126. N HEART AND FLOWERS STEMMED RUFFLED COMPOTE - LIME ICE GREEN (VERY RARE TINT; NOT OFTEN FOUND)
127. N HEART AND FLOWERS STEMMED RUFFLED COMPOTE - ICE GREEN (RARE AND DESIRABLE - NICE)
128. N Heart and Flowers Stemmed Ruffled Compote - Mari. (scarce; nice color and irid.)
129. N Heart and Flowers Stemmed Ruffled Compote - White (scarce)
130. N Heart and Flowers Stemmed Ruffled Compote - Blue Opal. (not carnival but very hard to find; nice opal.)
131. N HEART AND FLOWERS RUFFLED BOWL WITH RIBBED EXTERIOR - ICE GREEN (VERY SCARCE ITEM; FROSTY WITH GOOD IRID.)
132. N HEART AND FLOWERS RUFFLED BOWL WITH RIBBED EXTERIOR - ICE BLUE (SCARCE; NICE COLOR AND IRID.)
133. N DRAPERY ROSE BOWL - ICE BLUE (VERY RARE; REALLY NICE PINK HIGHLIGHTS)
134. N DRAPERY ROSE BOWL - WHITE (RARE; NICE AND FROSTY)
135. N DRAPERY ROSE BOWL - AQUA OPAL. (VERY DESIRABLE; PASTEL IRID.)
136. N DRAPERY ROSE BOWL - BLUE (VERY SCARCE COLOR)
137. N DRAPERY ROSE BOWL - PUR. (VERY SCARCE)
138. N DRAPERY ROSE BOWL - DK. MARI. (GREAT COLOR AND IRID.)
- 3000 139. N DAISY AND DRAPE FTD. VASE, TURNED IN - ICE BLUE (EXTREMELY RARE AND DESIRABLE; A TOUGHIE)
140. N DAISY AND DRAPE FTD. VASE, TURNED IN - DK. PUR. (RARE AND UNDERPRICED)
- 1250 141. N DAISY AND DRAPE FTD. VASE, FLARED OUT - ELEC. BLUE (RARE AND VERY DESIRABLE; NICE HIGHLIGHTS)
142. N DAISY AND DRAPE FTD. VASE, FLARED OUT - DK. MARI. (VERY SCARCE; DARK COLOR)
143. N DAISY AND DRAPE FTD. VASE, FLARED OUT - AQUA OPAL. (VERY DESIRABLE; NICE PASTEL IRID.)
144. N DAISY AND DRAPE FTD. VASE, FLARED OUT - AQUA OPAL. (RARE; HAS MARI. OVERLAY)
145. N DAISY AND DRAPE FTD. VASE, FLARED OUT - WHITE (SCARCE; FROSTY)



- \_\_\_ 146. **N STRAWBERRY STIPPLED PLATE WITH RIBBED EXTERIOR - PUR. (RARE VARIATION; NICE COLOR AND IRID.)**
- \_\_\_ 147. N Strawberry Bowl with Pie Crust Edge and Plain Exterior - Green (desirable; super blue highlights)
- \_\_\_ 148. N Strawberry Bowl with Pie Crust Edge and Basketweave Exterior - Dk. Mari. (super color)
- \_\_\_ 149. N Fine Cut and Roses ftd. Candy Dish with Fancy Interior - Aqua Opal. (rare item; feet have some damage)
- \_\_\_ 150. **N FINE CUT AND ROSES FTD. ROSE BOWL WITH FANCY INTERIOR - AQUA OPAL. (RARE AND VERY DESIRABLE; GREAT DETAIL AND IRID.)**
- \_\_\_ 151. **N FINE CUT AND ROSES FTD. ROSE BOWL WITH FANCY INTERIOR - DK. ICE BLUE (RARE; GREAT COLOR WITH PINK HIGHLIGHTS)**
- \_\_\_ 152. **N FINE CUT AND ROSES FTD. ROSE BOWL WITH FANCY INTERIOR - WHITE (RARE; FROSTY AND HAS MULTI-COLORED IRID.)**
- \_\_\_ 153. N Fine Cut and Roses ftd. Rose Bowl - Green (scarce; feet have some chips)
- \_\_\_ 154. N Fine Cut and Roses ftd. Rose Bowl - Pur. (nice color)
- \_\_\_ 155. N Fine Cut and Roses ftd. Rose Bowl - Amy. (nice light tint)

## START OF SECOND SESSION

- \_\_\_ 156. N Fine Cut and Roses ftd. Rose Bowl - Dk. Mari. (dark color and irid.)
- \_\_\_ 157. N Fine Cut and Roses ftd. Rose Bowl - Custard / Nutmeg (scarce)
- \_\_\_ 158. **N BEADED CABLE FTD. ROSE BOWL - DK. ICE BLUE (RARE COLOR; DARK BASE COLOR)**
- \_\_\_ 159. **N BEADED CABLE FTD. ROSE BOWL - AQUA OPAL. (RARE; SUPER BUTTERSCOTCH OVERLAY)**
- \_\_\_ 160. N Beaded Cable ftd. Rose Bowl - Elec. Blue (scarce color; odd base mold)
- \_\_\_ 161. N Beaded Cable ftd. Rose Bowl - Green (scarce)
- \_\_\_ 162. N Beaded Cable ftd. Rose Bowl - Mari. (nice color)
- \_\_\_ 163. N Beaded Cable ftd. Rose Bowl with Ribbed Interior - Amy.
- \_\_\_ 164. **N GOOD LUCK PLATE WITH BASKETWEAVE EXTERIOR - PUR. (SUPER COLOR AND IRID.; A BIT OBLONG)**
- \_\_\_ 165. **N GOOD LUCK RUFFLED BOWL WITH RIBBED EXTERIOR - AQUA OPAL. (RARE; SUPER BUTTERSCOTCH OVERLAY)**
- \_\_\_ 166. **N GOOD LUCK RUFFLED BOWL WITH RIBBED EXTERIOR - AQUA / TEAL (SUPER IRID.; HAS BLUE HIGHLIGHTS)**
- \_\_\_ 167. **N GOOD LUCK BOWL WITH RIBBED EXTERIOR - PUR. (SUPER ELEC. BLUE FINISH)**
- \_\_\_ 168. N Good Luck Ruffled Bowl with Pie Crust Edge and Ribbed Exterior - Pur. (super multi-colored irid.; very desirable)
- \_\_\_ 169. N Good Luck Ruffled Bowl with Pie Crust Edge and Ribbed Exterior - Blue (very scarce; nice multi-colored irid.)
- \_\_\_ 170. N Good Luck Ruffled Bowl with Pie Crust Edge and Ribbed Exterior - Dk. Mari. (scarce; dark finish)
- \_\_\_ 171. N Good Luck Ruffled Bowl with Pie Crust Edge and Basketweave Exterior - Green (scarce; satiny finish and irid.)
- \_\_\_ 172. N Three Fruits Medallion Stippled ftd. Ruffled Bowl with Meander Exterior - Ice Blue (open bubble on one foot; very scarce)
- \_\_\_ 173. **N THREE FRUITS MEDALLION STIPPLED FTD. RUFFLED BOWL WITH MEANDER EXTERIOR - AQUA OPAL. (RARE; NICE OPAL. AND IRID.)**
- \_\_\_ 174. N Three Fruits Medallion Stippled ftd. Ruffled Bowl with Meander Exterior - Dk. Mari. (nice)
- \_\_\_ 175. **N THREE FRUITS STIPPLED RUFFLED BOWL WITH RIBBED EXTERIOR - SAPPHIRE (EXTREMELY RARE AND HAS SUPER COLOR; SMALL FLAKE ON INSIDE EDGE)**
- \_\_\_ 176. **N THREE FRUITS STIPPLED PLATE WITH RIBBED EXTERIOR - DK. MARI. (SUPER COLOR; SCARCE)**
- \_\_\_ 177. N Three Fruits Bowl with Pie Crust Edge and Basketweave Exterior - Dk. Pur. (a beauty; great color)

- \_\_\_ 178. N Three Fruits Plate with Basketweave Exterior - Amy.
- \_\_\_ 179. 7 1/2" N Fruits and Flowers Ruffled Bowl with Basketweave Exterior - Blue (has elec. blue highlights)
- \_\_\_ 180. **7 1/2" N FRUITS AND FLOWERS RUFFLED BOWL WITH BASKETWEAVE EXTERIOR - AQUA / TEAL (VERY RARE BASE COLOR; NICE AVERAGE IRID.)**
- 1850 \_\_\_ 181. **N LEAF AND BEADS FTD. ROSE BOWL - ICE BLUE (RARE; DARK COLOR; VERY GOOD IRID.)**
- \_\_\_ 182. **N LEAF AND BEADS FTD. ROSE BOWL - AQUA OPAL. (A PRETTY ITEM - ALWAYS IN DEMAND)**
- \_\_\_ 183. N Leaf and Beads ftd. Rose Bowl - Blue (scarce color)
- \_\_\_ 184. N Leaf and Beads ftd. Rose Bowl - Amy. (nice irid.; a bit of wear inside)
- \_\_\_ 185. N Leaf and Beads ftd. Rose Bowl with Ribbed Floral Interior - Dk. Mari. (dark color and irid.)
- \_\_\_ 186. N Leaf and Beads ftd. Rose Bowl with Rayed Interior - Green
- \_\_\_ 187. **N DAISY AND PLUME FTD. ROSE BOWL WITH BERRY INTERIOR - ICE BLUE (VERY RARE; UNDERPRICED FOR ITS AVAILABILITY)**
- \_\_\_ 188. N Daisy and Plume ftd. Rose Bowl with Berry Interior - White (one foot badly damaged)
- \_\_\_ 189. N Daisy and Plume ftd. Rose Bowl with Berry Interior - Blue (pinhead but very rare)
- \_\_\_ 190. N Daisy and Plume ftd. Rose Bowl with Berry Interior - Pur. (nice color)
- \_\_\_ 191. N Daisy and Plume ftd. Rose Bowl with Berry Interior - Mari.
- \_\_\_ 192. N Daisy and Plume ftd. Rose Bowl with Rayed Interior - Green
- \_\_\_ 193. N Daisy and Plume ftd. Rose Bowl with Rayed Interior - Mari.
- \_\_\_ 194. (2) N Diamond Point Handled Bushel Baskets - Crystal (selling choice)
- \_\_\_ 195. **N DIAMOND POINT HANDLED BUSHEL BASKET - BLUE (EXTREMELY RARE; AS DESIRABLE A BASKET AS THERE IS)**
- \_\_\_ 196. **N DIAMOND POINT HANDLED BUSHEL BASKET - MARI. (CHIPPED AT BASE OF ONE HANDLE BUT STILL VERY RARE)**
- 2200 \_\_\_ 197. **N ROUND BUSHEL BASKET - SAPPHIRE (HAS TO BE ONE OF THE BETTER EXAMPLES - A SUPER ITEM)**
- \_\_\_ 198. N Round Bushel Basket - Vaseline (cracked across base but still extremely rare)
- \_\_\_ 199. **N ROUND BUSHEL BASKET WITH PLAIN HANDLE - GREEN (NO BASKETWEAVE ON BASE OF HANDLE; AN EXTREMELY RARE VARIATION - SUPER ITEM)**
- \_\_\_ 200. **N ROUND BUSHEL BASKET WITH RIBBED HANDLE - SMOKE / MARI. (ODD TINT THAT IS NOT OFTEN FOUND; NICE)**
- \_\_\_ 201. **N ROUND BUSHEL BASKET - HOREHOUND (ANOTHER ODD TINT THAT IS ALSO VERY NICE)**
- \_\_\_ 202. N Round Bushel Basket - Black Amy. (odd example; has silvery / gold irid.)
- \_\_\_ 203. N Round Bushel Basket - Pur. (scarce)
- \_\_\_ 204. N Round Bushel Basket - Blue (scarce; silvery / gold irid.)
- \_\_\_ 205. N Round Bushel Basket - Blue (damaged at handle)
- \_\_\_ 206. **N ROUND BUSHEL BASKET - LIME ICE GREEN (SUPER RARE TINT; GREAT COLOR AND IRID.)**
- \_\_\_ 207. N Round Bushel Basket - Ice Green (scarce; nice irid.)
- \_\_\_ 208. **N ROUND BUSHEL BASKET - AQUA OPAL. (RARE; ALWAYS IN DEMAND)**
- \_\_\_ 209. N Round Bushel Basket - White (scarce)
- \_\_\_ 210. N Round Bushel Basket - Mari. (nice color)
- \_\_\_ 211. **N ROUND BUSHEL BASKET - GREEN OPAL. (NOT CARNIVAL; ONE OF THE 1st I'VE SEEN)**
- \_\_\_ 212. N Round Bushel Basket - Blue Opal. (not carnival; scarce)
- \_\_\_ 213. N Round Bushel Basket - Custard / Nutmeg (not carnival; nice decoration)
- \_\_\_ 214. N Round Bushel Basket - Ebony (not carnival)
- \_\_\_ 215. **N EIGHT SIDED BUSHEL BASKET - ICE BLUE (RARE AND VERY DESIRABLE; NICE)**
- \_\_\_ 216. **N EIGHT SIDED BUSHEL BASKET - ICE GREEN (RARE AND VERY DESIRABLE; A TOUGHIE)**
- \_\_\_ 217. N Eight Sided Bushel Basket - White (scarce; frosty)
- \_\_\_ 218. N Eight Sided Bushel Basket - Amy. (scarce)



219. N EIGHT SIDED BUSHEL BASKET - GREEN (RARE COLOR; NICE BRIGHT FINISH)
220. N EIGHT SIDED BUSHEL BASKET - GREEN (SCARCE; A NICE MARI. OVERLAY)
221. N Eight Sided Bushel Basket - Dk. Mari. (super pink and blue finish)
222. N Eight Sided Bushel Basket - Mari. (scarce)
223. N TREE TRUNK STANDARD SIZE SWUNG VASE - ICE BLUE (DESIRABLE AND TOUGH TO FIND; NICE)
224. 13" N TREE TRUNK MID SIZE SWUNG VASE - GREEN (NICE COLOR; VERY DESIRABLE)
- 2350 225. N IVY TOWN PUMP - DK. MARI. (SUPER, SUPER PINKS AND BLUES; ONE OF THE BEST I'VE SEEN)
- 2600 226. N IVY TOWN PUMP - GREEN (RARE COLOR; EXTREMELY DESIRABLE ITEM; HAS TINY PINHEAD AT BASE OF HANDLE)
- 650 227. N IVY TOWN PUMP - PUR. (RARE; DESIRABLE - A VERY POPULAR ITEM!)
228. 17" N Wide Panel Swung Funeral Vase - Green (nice size)
229. 9 1/2" N TREE TRUNK STANDARD SWUNG VASE - AQUA / TEAL (VERY RARE BASE COLOR; NICE IRID.)
- 3500 230. DUGAN 8 RUFFLED FARMYARD BOWL - PUR. (VERY RARE; EXTREMELY DESIRABLE; SUPER!)
231. Dugan Persian Garden Large Ice Cream Bowl - White (scarce; great color and irid.)
232. Dugan Persian Garden ind. Ice Cream Bowl - White (nice color and irid.)
- 900 233. 6 1/2 - 7" DUGAN PERSIAN GARDEN PLATE WITH BASKETWEAVE EXTERIOR - AMY. (SCARCE COLOR; NICE AVERAGE COLOR AND IRID.)
234. 8 1/2 - 9" Dugan Fanciful Plate - Blue (scarce color)
235. DUGAN WISHBONE AND SPADES CHOP PLATE - PUR. (SUPER COLOR AND IRID.; TOUGH TO FIND)
- 320 236. (2) 6 1/2 - 7" DUGAN WISHBONE AND SPADES PLATES - PUR. (SUPER IRID.; SELLING CHOICE)
237. Dugan Mary Ann Handled Vase - Amy. (nice color)
238. Dugan Mary Ann Handled Vase - Mari.
239. Dugan Maple Leaf Ind. Stemmed Berry Bowl - Mari.
240. DUGAN NAUTILUS CREAMER - PUR. (GREAT COLOR AND IRID.)
241. Dugan Nautilus Creamer - P. Opal. (nice color and opal.; scarce)
242. Dugan Fishnet Single Lily Epergne - P. Opal. (base damaged but lily OK)
243. DUGAN HONEYCOMB ROSE BOWL - P. OPAL. (SCARCE; NICE IRID.)
244. Dugan Big Basketweave Handled Flower Basket - Mari.
245. DUGAN HANDLED BEADED BASKET - WHITE (RARE COLOR; SUPER IRID.)
246. Dugan Handled Beaded Basket - Mari.
247. Dugan Peacock at the Fountain Tumbler - Blue
248. DUGAN FISHERMAN'S MUG - DK. MARI. (FANTASTIC PINKS AND BLUES)
249. Dugan Fisherman's Mug - Pur. (silvery)
250. Dugan Grape Delight 6 ftd. Round Top Rose Bowl - Pur. (a beaut; great irid.)
251. Dugan Grape Delight 6 ftd. Round Top Rose Bowl - Mari.
252. Dugan Grape Delight 6 ftd. Round Top Rose Bowl - White (feet chipped)
253. Dugan Grape Delight 6 ftd. Round Top Rose Bowl - Pur. (spotty and rough)
254. Dugan Grape Delight 6 ftd. Ruffled Top Rose Bowl - White (scarce shape)
255. U.S. GLASS ACORN HANDLED VASE - GREEN (EXTREMELY RARE; ONE OF 3 KNOWN - ONLY ONE OF THIS COLOR; A SUPER RARITY!)
- 3000 256. U.S. GLASS COSMOS AND CANE WATER PITCHER - MARI. (RARE AND UNDERPRICED; SELDOM SEEN AND NICE)
257. U.S. Glass Cosmos and Cane Tumbler - Mari. (scarce)
258. CAMBRIDGE INVERTED FEATHER COVERED CRACKER JAR - GREEN (NICE COLOR; SCARCE AND PERFECT)
259. Cambridge Small Size Buzz Saw Cruet - Green (no stopper; scarce)
- 950 260. CAMBRIDGE VENETIAN GIANT ROSE BOWL - GREEN (RARE; DESIRABLE; A MASSIVE, COLLECTIBLE ITEM)
261. Cambridge Double Star Water Pitcher - Green (rare; nice irid.)
262. Cambridge Double Star Tumbler - Green (nice color)
263. 2 3/4" Tall McKee (?) Geometric Star Miniature Rose Bowl - Lt. Mari. (very unusual; a cute minature)
264. Heisey Type Miniature Plain Jane Handled Flower Basket - Smoke Flash (scarce; odd item)
- 950 265. 9 1/2" M'BURG PEACOCK LARGE ICE CREAM BOWL - AMY. (FANTASTIC RADIUM FINISH, ELEC. BLUE AND RED HIGHLIGHTS - ONE OF THE VERY BEST!)
266. 10" M'BURG PEACOCK AT THE URN LARGE RUFFLED BOWL - GREEN (SATINY; HAS BEE, NO BEADING; NICE IRID.)
267. 10 1/4" M'BURG PEACOCK AT THE URN LARGE RUFFLED BOWL - AMY. (SORTA RADIUM; HAS BEE BUT NO BEADING)
268. M'BURG SWIRL HOBNAIL ROSE BOWL - AMY. (SUPER IRID. AND VERY DESIRABLE)
269. M'BURG HOBNAIL ROSE BOWL - DK. MARI. (SUPER COLOR AND IRID.; VERY DESIRABLE)
270. 9 - 9 1/4" M'BURG MANY STARS ICE CREAM SHAPED BOWL WITH 6 POINTED STAR - GREEN (RADIUM AND RARE; GREAT FINISH; VERY DESIRABLE)
271. 7 3/4" M'BURG LETTERED COURTHOUSE RUFFLED BOWL - AMY. (RADIUM; SUPER COLOR AND IRID.; PLUS SELLING 100 YR. COMMEMORATIVE BANK OF HOLMES COUNTY COURTHOUSE)
272. M'burg Nesting Swan 6 Ruffled Bowl - Amy. (radium; super irid.; very desirable)
273. M'burg Nesting Swan 6 Ruffled Bowl - Green (radium; super irid.)
274. M'burg Nesting Swan 6 Ruffled Bowl - Mari. (radium; super color and irid.)
275. M'BURG TROUT AND FLY BOWL WITH 3 IN 1 EDGE - AMY. (SATINY; VERY DESIRABLE)
276. M'burg Trout and Fly 6 Ruffled Bowl - Dk. Mari. (satiny; scarce; nice color)
277. M'burg Hobstar and Feather Giant Rose Bowl - Green (repaired - bolted together at stem)
278. Fenton Orange Tree Shaving Mug - Lt. Mari.
279. Fenton Sailboat Ruffled Sauce - Mari.
- 2600 280. FENTON ILLINOIS SOLDIERS AND SAILORS FLAT PLATE - BLUE (SUPER COLOR, SUPER DESIRABLE; A GREAT ITEM!)
- 1900 281. FENTON ILLINOIS SOLDIERS AND SAILORS FLAT PLATE - DK. MARI. (SUPER COLOR AND IRID.; ANOTHER EXCELLENT EXAMPLE)
- 950 282. FENTON 1914 PARKERSBURG BPOE ELKS PLATE - BLUE (RARE; EXCELLENT COLOR AND IRID.; A SUPER ITEM)
- 1300 283. FENTON 1911 ATLANTIC CITY BPOE ELKS PLATE - BLUE (RARE; NICE SATINY FINISH)
284. FENTON SPECTORS DEPT. STORE / HEART AND VINE PLATE - MARI. (SCARCE; A VERY POPULAR LETTERED PIECE)
- 2750 285. FENTON STAG AND HOLLY SPATULA FTD. RUFFLED BOWL - RED (RARE AND VERY DESIRABLE; VERY ATTRACTIVE!)
286. Fenton Stag and Holly Spatula ftd. Ruffled Bowl - Green (very scarce base color)
287. Fenton Stag and Holly Spatula ftd. Ruffled Bowl - Amy. (another scarce color)
288. FENTON STAG AND HOLLY LARGE BALL FTD. CHOP PLATE - MARI. (RARE; GREAT COLOR; ROUGH ON ONE POINT)
289. Fenton Stag and Holly Large Ball ftd. Ice Cream Shaped Bowl - Mari. (amber tint)
290. Fenton Stag and Holly Large Ball ftd. Ice Cream Shaped Bowl - Blue (very desirable super irid.)



291. Fenton Blackberry 2 Row Open Edge Flat Plate - Mari. (damaged on lattice but very rare)
292. **FENTON HOLLY FLAT PLATE - BLUE (SATINY AND SCARCE)**
293. Fenton Holly Flat Plate - Dk. Mari. (nice color and irid.)
294. Fenton Holly Flat Plate - White / Lt. Blue Tint (scarce; odd tint)
- 250 295. **FENTON ORANGE TREE WITH TRUNK FLAT PLATE - GREEN (EXTREMELY RARE COLOR FOR THIS ITEM - SUPER!)**
296. Fenton Orange Tree Plate - Blue (scarce)
297. Fenton Orange Tree Plate - White (scarce)
298. **FENTON CAPTIVE ROSE FLAT PLATE - GREEN (VERY SCARCE IN THIS COLOR; NICE ITEM)**
299. **FENTON PEACOCK AND GRAPE SPATULA FTD. RUFFLED BOWL - LIME GREEN OPAL. (RARE AND DESIRABLE; ANOTHER UNDERPRICED ITEM)**
300. **FENTON PEACOCK AT THE URN FLAT PLATE - BLUE (SCARCE; ALWAYS IN DEMAND; NICE COLOR)**
301. **FENTON PEACOCK AT THE URN FLAT PLATE - DK. MARI. (SCARCE; GREAT COLOR AND IRID.)**
302. Fenton Peacock at the Urn 6 Ruffled Bowl - White (scarce; pretty nice irid.)
303. Fenton Horsehead Medallion ftd. Rose Bowl - Mari. (nice color)
304. 7 1/2" Fenton Vintage Grape Ice Cream Bowl - Green
305. **FENTON PANTHER FTD. RUFFLED IND. BERRY BOWL - RED (RARE AND VERY DESIRABLE; HAS SILVERY / GOLD IRID.)**
306. **7 1/2" FENTON G & C LOW RUFFLED BOWL - RED (SILVERY IRID.; NICE BASE COLOR)**
307. **9 1/2" FENTON LITTLE FLOWERS LARGE RUFFLED BOWL - ELEC. BLUE (EXCELLENT EXAMPLE; SUPER IRID.)**
308. 9 1/2" Fenton Little Flowers Large Bowl with 3 in 1 Edge - Mari.
309. Fenton Persian Medallion Rose Bowl - White (scarce color; nice irid.)
310. Fenton Persian Medallion Rose Bowl - Amy. (cracked at base but an extremely difficult color to find)
311. **NEW FENTON REGAL IRIS GONE WITH THE WIND LAMP - AQUA OPAL. (A VERY DESIRABLE, LIMITED ITEM)**
312. **NEW FENTON REGAL IRIS GONE WITH THE WIND LAMP - RED (ANOTHER DESIRABLE LIMITED EDITION)**
- 150 313. **FENTON 2 ROW 2 SIDED OPEN EDGE HAT - REVERSE AMBERINA OPAL. (SUPER DESIRABLE ITEM - A GREAT ADDITION)**
314. Fenton 2 Row 2 Sided Open Edge Hat - Black Amy. (scarce base color)
315. Fenton 2 Row 2 Sided Open Edge Hat - Powder Blue / Mari. (odd tint)
316. Fenton 2 Row 2 Sided Open Edge Hat - Royal Blue
317. Fenton 2 Row 2 Sided Open Edge Hat - Depression Green (not carnival)
318. **FENTON 2 ROW OPEN EDGE HAT - RED (RARE; NICE AND DESIRABLE)**
319. **FENTON 2 ROW OPEN EDGE HAT - GREEN (VERY SCARCE COLOR; NICE IRID.)**
- 500 320. **FENTON 2 ROW OPEN EDGE HAT - ICE BLUE (SUPER LITTLE ITEM; GREAT COLOR, ORIGINAL GOLD TRIM)**
321. **FENTON 2 ROW OPEN EDGE HAT - ICE GREEN (VERY SCARCE; NICE AND FROSTY)**
322. Fenton 2 Row Open Edge Hat - Lt. Aqua (scarce)
323. Fenton 2 Row Open Edge Hat - Aqua (damaged, glued together)
324. Fenton 2 Row Open Edge Hat - Odd Blue
325. Fenton 2 Row Open Edge Hat - Blue
326. (2) Fenton 2 Row Open Edge Hats - Mari.
327. **FENTON 2 ROW OPEN EDGE JACK IN THE PULPIT HAT - AMY. (VERY SCARCE BASE COLOR; NICE ITEM)**
328. Fenton 2 Row Open Edge Jack in the Pulpit Hat - Mari. / Vaseline
329. Fenton 2 Row Open Edge Jack in the Pulpit Hat - Lt. Mari. / Vaseline
330. Fenton 2 Row Open Edge Jack in the Pulpit Hat - Blue

331. Fenton 2 Row Open Edge Jack in the Pulpit Hat - Mari.
332. **FENTON 2 ROW OPEN EDGE LARGE SIZE 2 SIDED HAT - ICE GREEN (RARE AND DESIRABLE ESP. IN THIS SIZE)**
333. Fenton 2 Row Open Edge Large Size Ruffled Hat - White (scarce; nice and frosty)
334. Fenton 2 Row Open Edge Large Size Ruffled Hat - Crystal (not carnival)
335. Fenton Blackberry 2 Row Open Edge Ruffled Hat - Aqua / Mari. (scarce color for this item)
- 325 336. Fenton Blackberry 2 Row Open Edge Ruffled Hat - Green (very scarce)
337. Fenton Blackberry 2 Row Open Edge Ruffled Hat, straight with Flared Sides - Ebony (not carnival)
338. Fenton Blackberry 2 Row Open Edge 2 Sided Hat - Mari.
339. Fenton Cherry Circles 2 Handled Round Bon Bon - Blue (chipped)
- 1950 340. **18" FENTON RUSTIC SWUNG FUNERAL VASE WITH COLLAR BASE - GREEN (SUPER, SUPER COLOR; VERY DESIRABLE)**
341. **19" FENTON RUSTIC SWUNG FUNERAL VASE WITH COLLAR BASE - BLUE (SUPER COLOR - ANOTHER GREAT EXAMPLE)**
342. **FENTON FLOWERS FTD. ROSE BOWL - SMOKEY BLUE (A RARE COLOR FOR THIS ITEM; VERY ODD TINT)**
343. **FENTON FLOWERS FTD. ROSE BOWL - AMY. (SUPER COLOR AND IRID.; VERY SCARCE ITEM)**
344. Fenton Flowers ftd. Rose Bowl - Amy. (tiny flake on one foot - still scarce)
345. Fenton Flowers ftd. Rose Bowl - Blue (chip on one foot)
346. Fenton Flowers ftd. Rose Bowl - Mari. (damaged feet)
347. European ftd. Rose Bowl - Mari. (odd pattern)
348. **EUROPEAN DAISY BLOCK ROW BOAT - AMY. (VERY SCARCE COLOR)**
349. European Daisy Block Row Boat - Mari. (nice example)
350. **WESTMORELAND DAISY WREATH RUFFLED BOWL - BLUE OPAL. (VERY SCARCE; NICE COLOR AND OPAL.)**
351. Westmoreland Scales Ice Cream Shaped Bowl - Blue Opal. (chipped on edge; nice color and opal.)
352. Westmoreland Stork ABC Cereal Bowl - Mari.
353. Set of 4 Westmoreland Panelled Salts with Glass Spoons - Assorted Colors (selling as a set)
354. Assorted Lot of Old Carnival Odds and Ends - Assorted Colors
355. Newer Imperial Figural Man and Woman Salt and Pepper Shakers - Azure Blue (signed I-G)
356. 9" Newer Imperial Ripple Swung Vase - Smoke (signed I-G)
357. Newer Imperial Homestead NuArt Plate - White (signed I-G)
358. Newer Imperial Grape Large Ruffled Bowl - Dark
359. Newer Imperial Grape Milk Pitcher - Dark
360. Newer Fenton G & C Covered Humidor, Presnicks Carnival Glass Museum - Lodi, Ohio, 1969 - Dark
361. 1980 HOACGA ftd. Hatpin Holder - Ice Green
362. New Figural Alley Cat - Pur.
363. New Figural Alley Cat - Green
364. (2) New Figural Alley Cats - Teal (selling separately)
365. New Figural Alley Cat - Sapphire
366. New Figural Alley Cat - Pink
367. Pair New Figural Duck Head Bookends - Blue
368. (2) New Fenton Figural Ladies Shoes with Roses - Red
369. 1971 St. Clair Grand Opening Toothpick - Mari.
370. 1971 Lincoln Land Souvenir Child's Mug - Vaseline

**Plus a few Extra Items not listed THANK YOU!!!**

**For 1994 Auction results, send \$2.00 and a SASE to:**

**Valerie Carlson  
120 Clarion Dr.  
Whitesboro, NY 13494**

**Please include date of auction.**



