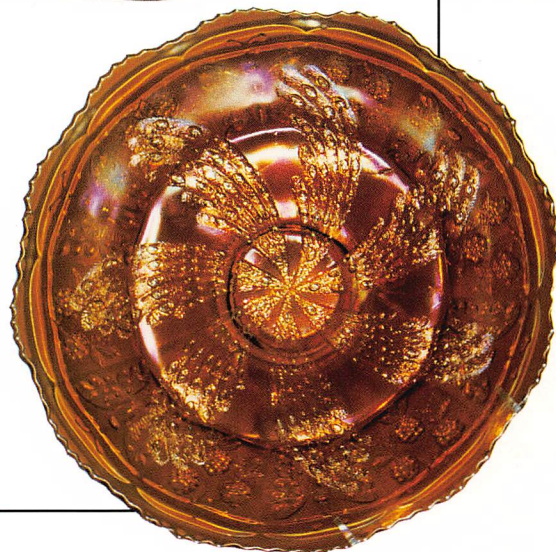


**OUTSTANDING CARNIVAL GLASS**

# **AUCTION**

**John and Lucile Britt Collection**



**Friday & Saturday, March 25 & 26, 1994**  
**Holiday Inn - St. Louis West/St. Peters, Missouri**

**JIM and JAN SEECK**  
515-424-1116

**Seeck Auctions**

**VERN and SUZIE WHITE**  
515-748-2923



# FRIDAY, MARCH 25, 1994- 5:00 p.m. SATURDAY, MARCH 26, 1994 - 9:00 a.m.

**Holiday Inn St. Louis/St. Peters- 4221 South Outer Road  
(Cave Springs Exit off 1-70) St. Peters, MO**

What more can you say, but WOW! You can say John and Lucile Britt! After looking through this list you wonder how so much great glass can be put together in a collection. John and Lucile's vast knowledge has put this collection together like no other could do. So many people respect, love and admire these two. They are a godsend to the carnival glass world.

This auction contains rarities in Millersburg, Northwood, Fenton, Imperial, miniatures, hatpins, etc., etc., etc. So many of these pieces we have never had the opportunity to sell before, some are the only ones known, and many you may never have the opportunity to buy again. John and Lucile have been a pleasure to work with, and Seeck Auctioneering is honored to be selling their collection. We hope you all can attend. These two days will be fun and exciting and also a great opportunity to see and buy a lot of SUPER carnival glass!

**PREVIEW:** Friday, 1 p.m

**TERMS:** Cash. Checks accepted with proper I.D.

**MOTEL RESERVATIONS:** Call the Holiday Inn directly at 314-928-1500. Please specify that you will be attending the Seeck Auction. The Holiday Inn does provide an airport shuttle.

## WRITE-IN BID POLICY

1. Write-in bids will be accepted by sending the numbers of the item(s) desired and amount bid on each to:  
Seeck Auctions, 405 1st St., Grafton, IA 50440.
2. If known by Auction Company, bids may be done over the telephone. (515) 424-1116 or (515) 748-2923.
3. There is a **\$10 charge for the first successful bid and a \$5 charge for each additional successful bid.**  
Shipping and insurance charges are additional.
4. Bidders will be notified by a phone call if their bid(s) are successful. This call will be made 1 - 3 days after the auction is over.
5. Please have all bids in by Tuesday, March 22nd. All bids (by mail or phone) after this date will not be carried out.
6. If you do not receive an item that sold for less than your bid, assume we cancelled your bid because the piece of glass had below average color, manufacture problem, damage or was not listed correctly.
7. To receive price lists send:     \$20 — for this auction and next 7 auctions  
  \$5 — for only this auction or individual auction (please specify)

Send to the above address.





- |   |  |
|---|--|
| <p><u>95</u><br/><u>25</u></p> <p><u>30</u><br/><u>45</u><br/><u>45</u><br/><u>50</u></p> <p><u>40</u><br/><u>50</u><br/><u>450</u></p> <p><u>55</u><br/><u>25</u><br/><u>350</u></p> <p><u>190</u><br/><u>135</u><br/><u>65</u><br/><u>55</u><br/><u>80</u></p> <p><u>35,20</u><br/><u>275</u><br/><u>40,35</u><br/><u>165</u><br/><u>155</u><br/><u>165</u><br/><u>65</u><br/><u>50</u><br/><u>85</u><br/><u>55</u><br/><u>75</u><br/><u>40</u><br/><u>55</u><br/><u>25</u><br/><u>450</u><br/><u>250</u><br/><u>95</u></p> | <ol style="list-style-type: none"> <li>1. Ripple 9" vase - amber</li> <li>2. Zippered Heart ruffled sauce - purple - pretty</li> <li>3. Lemon Server - marigold</li> <li>4. Lemon Server - vaseline stretch</li> <li>5. Panther round ftd sauce - marigold</li> <li>6. Propeller ruffled compote - green - scarce color</li> <li>7. Imperial Daisy basket - smoke</li> <li>8. Imperial Daisy basket - marigold</li> <li>9. <b>M'burg Strawberry Wreath CRE square compote - marigold - has stunning radium irid., only one I've ever seen, wow!</b></li> <li>10. <b>M'burg Rays &amp; Ribbons ruffled bowl - green - radium, nice</b></li> <li>11. Stippled Rays 6" plate - dark marigold</li> <li>12. <b>Miniature Blackberry compote - white - extremely rare color w/super frosty irid.</b></li> <li>13. <b>Miniature Blackberry compote - green - a hard to get color!</b></li> <li>14. <b>Miniature Blackberry compote - amethyst - also a hard to get color!</b></li> <li>15. Miniature Blackberry compote - marigold - as nice as they get</li> <li>16. Miniature Blackberry compote - blue</li> <li>17. 1977 HOACGA Good Luck hatpin holder - red</li> <li>18. HOACGA Good Luck hatpins (2) - red - choice</li> <li>19. <b>Thistle ruffled bowl - vaseline - scarce color w/pretty irid., a beauty</b></li> <li>20. Diamond Lace tumblers (2) - purple - very nice, choice</li> <li>21. M'burg Grape Wreath Variant IC shaped sauce - marigold - radium &amp; super</li> <li>22. <b>Fine Cut &amp; Roses rosebowl - amethyst - this has no collar base, a very rare variant!</b></li> <li>23. Fine Cut &amp; Roses rosebowl - green - nice</li> <li>24. Fine Cut &amp; Roses rosebowl - amethyst</li> <li>25. Heart Band miniature creamer - marigold - etched "Toronto Exhibition 1909"</li> <li>26. 1908 St. Paul Shriners champagne - red</li> <li>27. 1909 Louisville Kentucky Shriners champagne - clear</li> <li>28. 1899 Pittsburg Shriners champagne - green</li> <li>29. 1899 Pittsburg Shriners champagne - clear</li> <li>30. 1900 Washington D.C. Shriners champagne - clear</li> <li>31. 1902 San Francisco Shriners champagne - clear</li> <li>32. <b>Blossomtime compote - green - very scarce item, pretty</b></li> <li>33. <b>M'burg Fleur De Lis collar based ruffled bowl - green - radium, extremely rare w/radium finish &amp; super</b></li> <li>34. <b>M'burg Fleur De Lis collar based ruffled bowl - marigold - satin &amp; scarce</b></li> </ol> |
|---|--|
- |  |  |
|--|--|
| <p><u>95</u><br/><u>100</u><br/><u>85</u><br/><u>850</u><br/><u>35</u><br/><u>95</u><br/><u>325</u><br/><u>150</u><br/><u>85</u><br/><u>75</u><br/><u>2 X 30</u><br/><u>85</u><br/><u>775</u><br/><u>425</u><br/><u>35</u><br/><u>30</u><br/><u>60</u><br/><u>300</u><br/><u>165</u><br/><u>65</u><br/><u>60</u><br/><u>750</u><br/><u>40</u><br/><u>135</u><br/><u>50</u><br/><u>400</u><br/><u>170</u><br/><u>60</u><br/><u>50</u><br/><u>700</u><br/><u>325</u><br/><u>500</u><br/><u>5</u></p> | <ol style="list-style-type: none"> <li>35. <b>Fieldman Bros. Furniture Basketweave Open Edge advertising basket - marigold</b></li> <li>36. John H. Brand Co. Basketweave Open Edge advertising basket - marigold</li> <li>37. Miller's Furniture Basketweave Open Edge advertising basket - marigold</li> <li>38. <b>Fern Brand Chocolates handgrip plate - amethyst - super, super!</b></li> <li>39. Six Plums hatpin - purple</li> <li>40. Six Plums variant hatpin - purple - plums are not iridized, very hard to find</li> <li>41. <b>Fleur De Lis 8" vase - marigold - deep rich color w/super irid., quite rare, a beauty</b></li> <li>42. <b>Open Rose 9" plate - amber - a great example</b></li> <li>43. Open Rose 9" plate - green</li> <li>44. Open Rose 9" plate - marigold - super</li> <li>45. Rising Sun 4" round bowls (2) - marigold - cute miniatures, choice</li> <li>46. Sunflower &amp; Diamonds 9" vase - marigold - scarce</li> <li>47. <b>Grape &amp; Gothic Arches 7 pc. water set - green - a super hard set to locate, has great color, beautiful set</b></li> <li>48. Orange Tree hatpin holder - dark marigold - a dandy</li> <li>49. Spring Festival enameled tumbler - blue</li> <li>50. Iris w/Prism band enameled tumbler - marigold</li> <li>51. Starburst creamer - marigold - cute, made in Finland</li> <li>52. <b>Kittens 2 sides up dish - blue - extremely rare, a must for all kitten's collectors</b></li> <li>53. <b>Kittens 2 sides up dish - marigold - 2 sets of kitties, a dark, rich marigold, very rare</b></li> <li>54. <b>Louisa banana boat shaped ftd sauces - aqua teal - a very rare color, seldom seen</b></li> <li>55. <b>Louisa banana boat shaped ftd sauce - amethyst - ditto</b></li> <li>56. <b>Horse Medallion collar based round bowl - red - extremely rare piece of red</b></li> <li>57. Tulip &amp; Cane water goblet - marigold</li> <li>58. <b>Tulip &amp; Cane claret goblet - marigold - only 2 or 3 known</b></li> <li>59. Tulip &amp; Cane wine - marigold - scarce</li> <li>60. <b>Tulip &amp; Cane cordial - marigold - rare</b></li> <li>61. Beaded Shell mug - blue - rare color, nice</li> <li>62. Beaded Shell mug - amethyst - super</li> <li>63. Rex 5 pc. waterset - marigold - choice</li> <li>64. <b>Spector's Dept. Store Heart &amp; Vine 9" plate - marigold - very rare w/spectacular pink irid.</b></li> <li>65. <b>N's Blackberry &amp; Rays ruffled compote - purple - extremely rare, not even listed</b></li> <li>66. <b>N's Blackberry &amp; Rays ruffled compote - marigold - extremely rare</b></li> <li>67. Aramis juice tumblers (3) - marigold, smoke &amp; cranberry, water tumbler - smoke w/marigold top - choice</li> </ol> |
|--|--|



- 175 68. **Nautilus sugar bowl - peach opal - signed in script**
- 210 69. Constellation compote - blue opal - not carnival, very rare, never seen one before
- 130 70. Drapery rosebowl - blue opal - not carnival
- 105 71. Bushel Basket - blue opal - not carnival, lots of opal
- 425 72. **M'burg Peacock at Urn 3 in 1 edge "Mystery" bowl - green - radium & very hard to find**
- 85 73. Fashion rosebowl - marigold - nice, a must for rosebowl collectors
- 150 74. Fruits & Flowers bon bon - purple - spectacular irid.
- 135 75. **Little Barrel - smoke - super, all the barrels have been upgraded several times**
- 85 76. **Little Barrel - marigold - super**
- 115 77. **Little Barrel - green - very nice**
- 600 78. **Orange Tree Orchard water pitcher - blue - extremely rare, water pitchers are getting hot!**
- 90 79. Orange Tree Orchard tumblers (5) - blue - choice
- 60 80. Waterlily & Cattail whimsey 3 1/2" vase - marigold - rare in a vase
- 30 81. Imperial Flute lemonade tumbler - marigold - scarce
- 85 82. Colonial Stretch lemonade tumbler - aqua teal - odd color for this tumbler, very rare
- 25 83. Vineyard Scroll wine decanter & one wine - marigold - sold as pair
- 350 84. **Thistle banana boat - green - scarce color w/outstanding irid.**
- 115 85. Pinecone 6" plate - amethyst
- 65 86. Pinecone 6" plate - marigold
- 120 87. Compote vase - amber - rare color
- 200 88. **Tree Trunk midsize 12" vase - amethyst - a dandy**
- 235 89. **Thin Rib midsize 12" vase - green - outstanding & rare!**
- 300 90. **Peacocks 9" plate w/ribbed back - purple - spectacular blue irid.**
- 700 91. **Stippled Peacocks 9" plate w/ribbed back - blue - always in demand**
- 375 92. **Peacocks 9" plate w/ribbed back - white - good example**
- 65 93. **Rooster hatpin - white - rare color**
- 55 94. Rooster hatpin - lavender - pretty
- 45 95. Rooster hatpin - lavender w/painted background
- 115 96. Rooster hatpin - green
- 65 97. **Miniature bathtub - marigold - a neat little miniature, rarely seen**
- 105 98. Stippled Singing Birds mug - marigold - very pretty
- 400 99. **Zig Zag square crimped edge bowl - amethyst - very rare w/pretty radium irid.**
- 155 100. **Leaf & Beads rosebowl w/sawtooth edge - marigold - rare edge, Sunflower inter.**
- 135 101. Leaf & Beads rosebowl - purple - pretty
- 205 102. Leaf & Beads rosebowl - green - very nice
- 145 103. Lattice & Leaves 9 1/4" ftd vase - marigold
- 105 104. 1982 ICGA Frolicking Bears spittoon - red
- 95 105. 1983 ICGA Frolicking Bears spittoon - vaseline opal
- 120 106. 1981 ICGA Frolicking Bears spittoon - aqua opal
- 3200 107. **Poppy Show 9" plate - elec. blue - super spectacular! a highlight in this auction**
- 325 108. **Stippled Grape & Cable PCE bowl - blue - very scarce & very pretty**
- 1000 109. **Stippled Grape & Cable PCE bowl - ice blue - outstanding example, has minor pinpoint on leaf, a beauty**
- 25 110. Thistle vase - marigold
- 400 111. **Basketweave Open Edge ruffled basket - red - cherry & nice**
- 375 112. **Basketweave Open Edge ruffled basket - lavender - rare color**
- 105 113. Basketweave Open Edge ruffled basket - vaseline
- 105 114. Big Basketweave 10 1/2" vase - white - pretty
- 145 115. Panelled Diamond & Bows 5" vase - blue - very short for this vase
- 250 116. **Coral IC shaped bowl - green - super irid., a very rare underrated piece of glass**
- 275 117. **M'burg Hanging Cherries 3 in 1 edge 10" bowl - amethyst - has plain back - extremely rare bowl**
- 325 118. Peacock Tail 3 in 1 edge 9 3/4" bowl - green
- 105 119. Grape & Gothic Arches tumbler - pearl or iridized custard - very scarce
- 35 120. Grape & Gothic Arches tumbler - blue
- 75 121. **Banded Grape miniature creamer - marigold - listed as rare, cute**
- 65 122. **Rose Bouquet miniature creamer - marigold - a very rare miniature**
- 15 123. Split Diamond creamer - marigold
- 65 124. Colonial Variant hdd basket - ice green - glows under blacklight, a cutie & rare
- 45 125. Pinched Swirl 6 1/2" vase - peach opal
- 650 126. **Cambridge Double Star 7 pc. water set - green - a nice, well matched set**
- 85 127. Stork & Rushes hdd basket - marigold - good color, underrated
- 65 128. Estate toothpick - smoke - very scarce mini.
- 50 129. Enameled Daisies toothpick - marigold - only one seen
- 875 130. **Leaf Chain 7" ruffled bowl - red - has very good color & rare**
- 145 131. **Leaf Chain 7" ruffled bowl - aqua - very scarce color**
- 95 132. Throw Pillow hatpin - purple - very scarce
- 55 133. Tufted Throw Pillow hatpin - purple
- 25 134. Tiny Thumbprints breakfast set - marigold - souvenir. of Lincoln, NE
- 70 135. Tiny Thumbprints toothpick - marigold - souvenir of Graceville, MN, rare



- 155 136. **Boggy Bayou 11" vase - green - fantastic color & irid., neat vase**
- 80 137. Heavy Vine cologne bottle - marigold - original stopper, foreign, minor pinpoint on stopper
- 800 138. **Dreibus Parfait Sweets double handgrip plate - amethyst - very scarce**
- 175 139. **Four Flowers 6" plate - purple - very rare, one edge of plate lacks irid.**
- 195 140. **Four Flowers 6" plate - peach opal - good example**
- 45 141. Texas ftd creamer - amethyst - iridized by Hanson, super miniature
- 150 142. **Three Fruits dome ftd ruffled bowl - white - frosty & pretty w/basketweave exterior**
- 250 143. **Stag & Holly giant rosebowl - marigold - scarce, good, even color**
- 800 144. **Elk's paperweight - amethyst - perfect, no damage on this one! extremely rare**
- 115 145. Double Diamonds cologne bottle - dark, rich marigold, a beauty
- 80 146. Double Diamonds ring tree - dark marigold - rare & cute, super miniature
- 55 147. Double Diamonds pin dish - dark marigold - cute little miniature
- 150 148. N's Near Cut compote - green - very rare
- 575 149. **Peacock & Grape IC shaped bowl - red - amberina base w/pretty red highlights**
- 105 150. Floral & Optic rosebowl - smoke - scarce
- 45 151. Frosted Block lg size rosebowl - clambroth - signed Made in U.S.A.
- 60 152. Frosted Block sm size rosebowl - marigold -
- 165 153. German Beer stein w/metal lid - marigold - Bum Hundenken enameled on stein
- 65 154. **Kittens hldd basket - red - 1982 Encore**
- 115 155. **Kittens hldd basket - aqua opal - signed Taylor and Fenton**
- 85 156. Stream of Hearts ruffled compote - marigold
- 425 157. **M'burg Rosalind 3 in 1 edge 10" bowl - amethyst - radium, as pretty as I've seen**
- 35 158. Stork child's mug - blue - signed Dagenhart
- 225 159. **Cambridge Inverted Feather cracker jar - green - pretty example**
- 60 160. Persian Garden fruit bowl base - amethyst -
- 100 161. Dunbars Rolarama tumblers (2) - cranberry & blue - choice
- 325 162. **Holly 9" plate - white - frosty w/nice irid.**
- 30 163. Pinalles Queen pitcher & tumblers (2) - blue, marigold & cranberry - choice
- 35 164. Imperial Hobnail & tumbler - smoke - marked IG, only one John has seen in smoke
- 275 165. **Nippon PCE bowl - ice blue - outstanding irid., beautiful**
- 145 166. **Palm Beach whimsey banana boat shaped sauce - honey amber - super pretty example**
- 215 167. 1977 "A New Spirit" 474 waterset - blue - has the peanut & IG on bottom of pitcher & tumblers, very pretty set
- 115 168. **Miniature Morning Glory 4 3/4" vase - purple - very scarce & pretty**
- 90 169. Miniature Morning Glory 5 3/4" vase - green - very scarce color
- 125 170. Miniature Morning Glory 4 1/2" vase - smoke - a cutie
- 75 171. Miniature Morning Glory 4 1/4" vase - marigold - a doll
- 145 172. **Wild Flower hldd nappy - ice green - very nice color w/stretchy irid., scarce**
- 40 173. Pipe toothpick holder - marigold - always a desired miniature
- 750 174. **Pony ruffled bowl - ice green - extremely rare color w/pretty irid., beautiful**
- 65 175. Hobstar & Fruit banana boat shaped dish - marigold - cute
- 265 176. **Persian Medallion CRE ruffled compote - amethyst - a rare color in a rare compote**
- 70 177. Plain Jane hldd basket - aqua teal - rare color
- 40 178. Plain Jane hldd basket - smoke - scarce
- 100 179. **M'burg Blackberry Wreath tri-cornered sauce - marigold - radium & pretty**
- 35 180. Estate mug - marigold - very dark for this example, souvenir of Wray, CO
- 65 181. Footed Prism Panels 9 1/2" vase - marigold
- 135 182. Beaded Cable rosebowl - green - a nice example
- 100 183. Persian Garden 6" plate - marigold
- 500 184. **Wide Panel Epergne - marigold - very scarce item, nice matching set**
- 120 185. **Jacobean Ranger juice glass - marigold - very scarce w/dark marigold color**
- 70 186. **Heisey Colonial juice glass - marigold - signed Heisey, very rare, only 6 known, few tiny nicks on bottom**
- 500 187. **Round Up 9" flat plate - blue - extremely flat & nice, super piece**
- 300 188. **Round Up 9" flat plate - peach opal - good color & irid.**
- 155 189. Top of the Morning hatpin - purple
- 155 190. Top of the Morning variant hatpin - purple - background is not iridized
- 185 191. **Fenton's Grape & Cable w/Persian Medallion interior sauce - marigold - made like the fruit bowl, very scarce & cute**
- 85 192. Singing Birds sauce - blue - very rare color, very few known
- 275 193. **Drapery squatty 5" vase - white - super frosty & pretty, only one I've seen**
- 125 194. Drapery 8 1/2" vase - white - nice
- 155 195. Drapery 8" vase - ice green - nice
- 35 196. 1983 HOACGA Good Luck loving cup - red
- 180 197. God & Home water set - red - not old, pretty
- 65 198. 1984 HOACGA Good Luck fernery - red
- 325 199. Imperial Grape 7 pc. wine set - ice blue - marked IG, beautiful set & very scarce
- 350 200. **M'burg Grape Wreath Variant round crimped edge 10" bowl - green - radium & spectacular**



- 375 201. **M'burg Strawberry Wreath ruffled crimped edge 10" bowl - marigold - radium & like the green one, super!**
- 30 202. Beauty Bud 8 3/4" vase - amethyst
- 35 203. Beauty Bud 8 3/4" vase - marigold - dark
- 300 204. **Miniature Flower basket - blue opal - extremely scarce & pretty, complete w/wire handle, a beauty**
- 150 205. **Miniature Flower basket - peach opal - extremely scarce & pretty, complete w/wire handle**
- 275 206. Victorian large ruffled bowl - amethyst - a Dugan classic
- 215 207. **Grape & Cable variant punch cup - marigold - only has 2 sets of grapes & leaves, 3 or 4 known**
- 70 208. Inverted Feather punch cup - marigold - scarce
- 35 209. Tree punch cup - marigold - a very rare punch cup
- 40 210. Miniature Wide Panel hld basket - smoke - cute
- 500 211. **Daisy Squares ftd rosebowl - marigold - very rare, has crimped top, a beauty**
- 300 212. **Northwood/Dugan pastel swan - purple - very scarce & nice**
- 85 213. Northwood/Dugan pastel swan - celest blue
- 20 214. Northwood/Dugan pastel swan - ice green
- 80 215. Northwood/Dugan pastel swan - vaseline
- 130 216. **Northwood/Dugan pastel swan - green - only one John has seen like this**
- 75 217. Roll tumble-up w/pill cup - marigold - very unusual, only one we have seen
- 95 218. **Daisy & Button shoe - marigold - definitely old & pretty**
- 20 219. Daisy & Button shoe - ice blue - Smith
- 145 220. **Kittens vase - marigold - a very rare piece**
- 180 221. Kittens toothpick w/square top - marigold - pretty, square top is unusual
- 225 222. **Kittens toothpick w/2 sets of kitties - marigold - rare w/only 2 sets of kitties**
- 170 223. **Grape & Cable 7 1/2" ruffled bowl w/ unusual Poppy collar base - purple - rare**
- 215 224. Perfume w/floral stopper - marigold - 6 3/4" tall, contains applicator
- 375 225. **Dandelion mug - aqua opal - has a blue base glass color, unusual & pretty**
- 30 226. Plume Panels 10" vase - lime green w/marigold overlay - very scarce color
- 250 227. **Good Luck PCE bowl - pastel marigold - pretty pastel irid.**
- 85 228. Pineapple rosebowl - amethyst - very rare in this color
- 140 229. 1776-1976 HOACGA 7 pc. whiskey set - red - sold as set
- 135 230. 1974/1975 HOACGA 7pc. waterset - red - sold as set
- 185 231. Memphis punch bowl base - blue - who has the top? super!
- 75 232. **Stippled Wild Rose rosebowl - green - very scarce in the rosebowl shape**
- 165 233. **Stippled Wild Rose rosebowl - marigold - also very scarce in the rosebowl shape**
- 205 234. **Witch's Pot - marigold - very desirable miniature, has Sandstone, MN adv., rare**
- 95 235. Enameled Flowers miniature ewer - marigold w/blue handle - cute miniature, only one John's seen
- 70 236. Terry Crider frog - marigold - super irid.
- 145 237. Terry Crider frog - lime green opal - the more natural color
- 325 238. **M'burg Tulip Scroll 7 1/2" squatty vase - marigold - extremely rare vase, few known**
- 250 239. **M'burg Tulip Scroll 11 1/2" vase - green - great! M'burg vases are all scarce**
- 35 240. Vintage Leaf ruffled 9" bowl - marigold - who made this? nice example
- 85 241. Vintage Leaf 3 in 1 edge sauce - marigold
- 75 242. **Wide Panel cruet w/original stopper - marigold - John's only seen one, few known**
- 35 243. Interior Panels tumble-up - smoke - scarce
- 250 244. **Feathered Serpent IC shaped 10" bowl - blue - super spectacular & unusual shape**
- 165 245. Heart Band small mug - green - very rare
- 85 246. Heart Band small tumbler - green - souvenir of Columbus, OH, also very rare
- 475 247. **M'burg Whirling Leaves crimped edge tri-cornered bowl - amethyst - super scarce w/super color, beautiful**
- 75 248. Washboard (Diamonds & Fan) miniature pitcher - marigold - scarce w/irid.
- 40 249. Fine Rib 16" vase - blue
- 175 250. **Hobstar & Shield water pitcher - marigold - nice & very rare, have seen only two**
- 90 251. **Hobstar & Shield tumbler - marigold - very rare & nice example**
- 195 252. Ripple 10" vase - aqua teal - scarce color
- 140 253. Little Flowers ruffled 10" bowl - green
- 525 254. **Banded Grape & Cable hatpin holder - purple - nice irid & rare w/band**
- 195 255. **Bat hatpin - purple - a very scarce & desirable hatpin, great color**
- 115 256. Faceted Dome hatpin - purple - rare
- 55 257. Koolie Hat hatpin - purple
- 25 258. Triad hatpin - purple
- 875 259. Drapery rosebowl - marigold - super irid.
- 200 260. Drapery rosebowl - amethyst - very nice
- 65 261. **Butterfly & Berry tumbler - green - scarce color**
- 250 262. **Plaid ruffled bowl - blue - super multi-color irid., extra nice**
- 500 263. **Hearts & Flowers compote - aqua opal - very nice**
- 95 264. Wide Interior Panel basket - purple - super pretty irid.
- 95 265. Wide Interior Panel basket - marigold - dark
- 70 266. Ripple 12 1/2" vase - helios green
- 30 267. Basketweave miniature basket - marigold

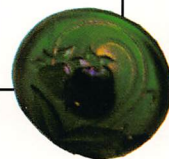
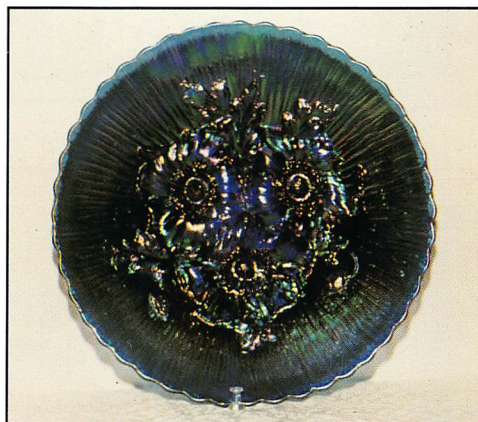
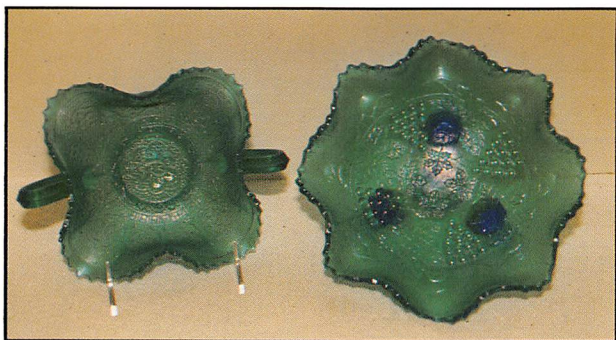
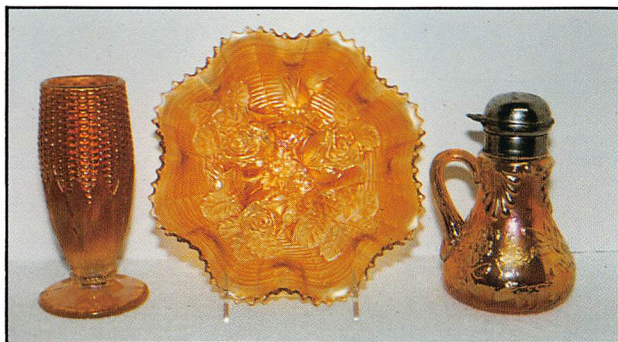
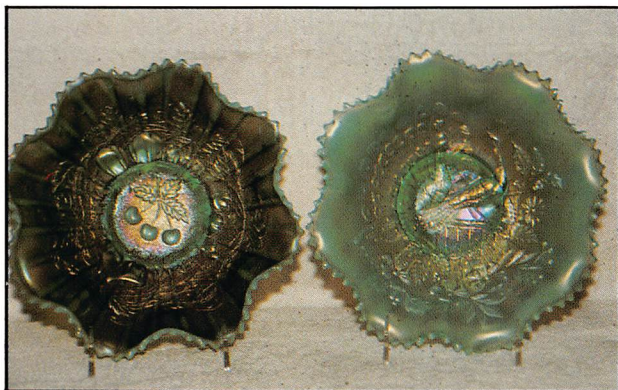
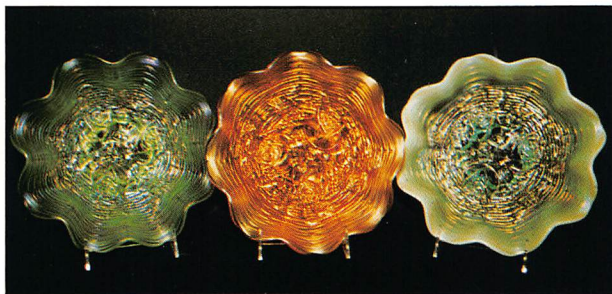


- 60 268. Tree of Life miniature basket - marigold - scarce
- 475 269. **Tornado vase - green - top of the line**
- 400 270. **Tornado vase - purple - top of the line**
- 15 271. Imperial Interior Wide Panels rosebowl - smoke - very nice example
- 30 272. Rambling Rose tumbler - blue - extra nice
- 550 273. **M'burg Poppy 6 ruffled compote - green - super radium & rare w/ruffled top**
- 25 274. Souvenir Banded mug (child's mug) - light marigold - Hartung book 8, pg. 124
- 30 275. Souvenir Mug - lt marigold - Hart. 6, pg. 115
- 70 276. Cambridge Near-Cut child's mug - dark marigold - Kimball, SD adv., signed Near-Cut
- 185 277. **Berry Band & Ribs cordial - marigold - very rare little cordial, a cute miniature**
- 105, 85 278. Four Seventy Four wine - dk. marigold - rare
- 1300 279. **Peacocks PCE bowl w/basketweave back - green - super, super, super!**
- 60 280. M'burg Cosmos sauce - green - nice
- 65 281. Shell small nut dish - aqua teal
- 50 282. Stretch 5 1/2" vase - celest blue
- 20 283. Hat - blue - large, these are neat
- 25 284. Hat - blue - medium, these are rare
- 80 285. Hat - blue - small, all 3 have some apoxy
- 350 286. **Poinsettia milk pitcher - purple - super electric irid. & extremely rare, one of 4 or 5, has crack in base**
- 155 287. Kittens plate - marigold
- 55 288. Big Butterfly (Scarab) hatpin - purple - super
- 100 289. Big Butterfly (Scarab) variant hatpin - purple - scarce, background is not iridized
- 35 290. Moire Beetle hatpin - purple
- 65 291. Grape Clusters hatpin - purple
- 55 292. Sculpture hatpin - purple - unusual w/pretty irid.
- 325 293. **Grape & Cable miniature lamp - purple - made from perfume, rare w/super irid.**
- 195 294. Swirl miniature lamp - marigold - light irid.
- 600 295. **M'burg Peacock at Urn "Shotgun" bowl - green - radium w/very good irid., rare**
- 30 296. Small Basket - marigold - Hartung's book 10, page 33, very seldom seen
- 20 297. 1978 LLCGA whimsey pitcher - red opal - few around
- 20 298. 1982 PNWCGC Fisherman's mug - peach opal
- 25 299. Swan mug - blue - Fenton
- 35 300. 1985 HOACGA bell - red
- 200 301. **Blackberry Open edge ruffled basket - red - cherry w/excellent irid., super example**
- 55 302. M'burg Blackberry Wreath sauce - amethyst - radium & nice
- X 303. Two Fruits divided dish - marigold
- 275 304. **Dugan Diamonds swan - blue opal - signed in base, very rare, has been in the Fenton museum for 10 years, not irid.**
- 50 305. Dugan Swan - blue opal - not irid.
- 30 306. Dugan Swan - green opal - not irid.
- 60 307. Dugan Swan - vaseline opal - not irid., nice
- 25 308. Dugan Swan - white opal - not irid.
- 30 309. Dugan Swan - frosty white - not irid., only one John has seen
- 1600 310. **Fenton's Grape & Cable ruffled ftd bowl - celest blue - extremely rare w/great irid.**
- 500 311. **Fleur De Lis 10 1/2" chop plate - marigold - deep, dark color, super irid., very rare**
- 550 312. **Peacock & Grape 3 in 1 edge bowl - lime green opal - excellent color & irid., rare**
- 250 313. **M'burg Zig Zag IC shaped bowl - amethyst - super color & irid.**
- 115 314. N's nut cup or salt cup - russet - rare color
- 60 315. N's nut cup or salt cup - vaseline - rarely seen
- 95 316. N's nut cup or salt cup - celest - a beauty
- 55 317. N's nut cup or salt cup - marigold - scarce
- 165 318. **Stars & Stripes toothpick - red - advertising "Saftey Night Light Co. Bklyn N.Y.", only one we have seen**
- 155 319. **Minnesota 3 hldd toothpick - marigold - U.S. Glass, first one John's ever seen**
- 200 320. **Brooklyn Bridge 10 ruffle bowl - marigold - radium, scarce**
- END OF FRIDAY SESSION**
- 85 321. Propeller vase - dk. marigold - rare in a vase
- 285 322. **Fenton's Vintage 6" plate - green - extremely rare, have never sold a 6" one before**
- 95 323. Ripple 6 1/2" vase - purple - super electric irid.
- 40 324. Stork enameled mug - clear glass w/irid.
- 5500 325. **Fantail chop plate - marigold - deep, dark color, only one known, a must for all chop plate collectors, a key rarity, beautiful**
- 65 326. Triands 8" vase - marigold - dark w/great irid., rarely seen, a beauty
- 95 327. **Puppy candy container - light marigold - a cute miniature**
- 500 328. **Orange Tree trunk plate - blue - super, super irid., this is a dandy plate**
- 200 329. **Orange Tree plate - white - frosty w/great irid.**
- 35 330. Buzz Saw & File goblet - marigold - 2 known
- 1600 331. **M'burg Deep Grape compote - dark marigold - multi-color radium irid., flared out top, a classic M'burg rarity**
- 150 332. Fisherman's mug - marigold - very nice
- 1700 333. **Persian Medallion 2 hldd bon bon - celest blue - super color & irid., great piece, rare**
- 425 334. Persian Medallion 2 hldd bon bon - red - super color w/nice irid., tiny spot of apoxy in pattern
- 200 335. **Rococo vase - lavender - rare color, dandy**
- 215 336. Rococo vase - smoke - super color & irid.
- 95 337. Rococo vase - marigold - very nice
- 95 338. Floral Accent miniature cup & saucer w/enameled flowers - marigold - 2 known
- 50 339. Scroll pin tray - marigold - rare miniature

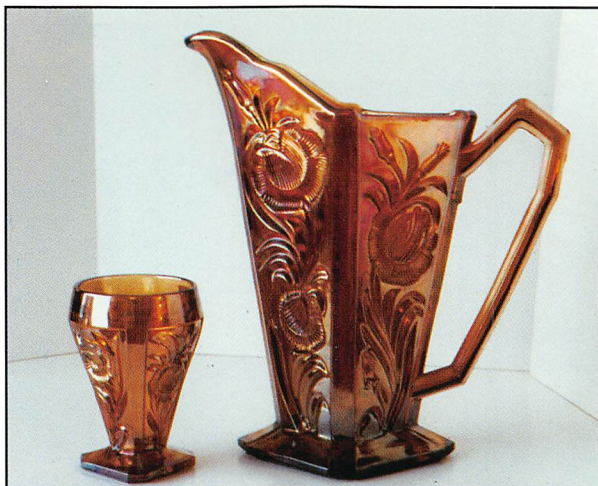


- 3750 340. **Blackberry Block 7 pc. water set - green - extremely rare set, super, super, super!**
- 75 341. Grape & Cable 2 sides up 6" dish - purple - nice irid.
- 105 342. Tulip Panels ginger jar - dark marigold - only one we've seen, super color & irid.
- 850 343. **M'burg Many Stars IC shaped bowl w/6 pt. star - green - radium & rare, a beauty**
- 265 344. **Fenton Swan salt - amber - rare color**
- 35 345. Fenton Swan salt - celest blue
- 30 346. Fenton Swan salt - pink
- 30 347. Fenton Swan salt - ice green
- 55 348. Fenton Swan salt - black - not iridized
- 4600 349. **M'burg Olympic compote - amethyst - only 2 known, has super radium irid., only one known in this color, Jan's favorite**
- 1800 350. **Poppy Show ruffled bowl - ice blue - deep ice blue w/excellent irid., gorgeous**
- 525 351. **Poppy Show ruffled bowl - purple - very nice irid.**
- 85 352. Cambridge Hobstar punch cup - green - rare
- 70 353. Cambridge Hobstar punch cup - marigold - rare
- 30 354. Unlisted pattern punch cup - light marigold - rare
- 130 355. Dahlia tumbler - purple - nice
- 100 356. **Wine & Roses wine goblet - vaseline - very rare color, glows under blacklight**
- 85 357. **Wine & Roses wine goblet - pastel blue - another rare color in this pattern, super**
- 85 358. **Wine & Roses wine goblet - blue - scarce**
- 300 359. **Kittens 4 sides up dish - blue - a super piece in a super rare color**
- 155 360. Kittens 4 sides up dish - marigold
- 65 361. Flute miniature salt dip - marigold
- 85 362. "Good Year" souvenir salt dip - marigold - a cutie, has a tiny spoon included, very rare
- 325 363. Rib Panels miniature mustard w/metal frame & spoon - marigold - a cute little piece & rare
- 750 364. **M'burg Trout & Fly IC shaped bowl - lavender - rare color, has pretty satin irid.**
- 450 365. **Fenton's Flowers rosebowl - smoke - very rare color, only one I've seen**
- 900 366. **Inverted Strawberry cuspidor - dark marigold - super, hard to get, top notch**
- 85 367. Turban hatpin - purple - beautiful color & irid., not easy to find
- 95 368. Turban hatpin - purple - same as above only small size, a little beauty
- 145 369. Squares & Triangles (Border Path) hatpin - purple - a tough one to find, very pretty example
- 1200 370. **Holly ruffled compote - red - super example**
- 175 371. **Holly ruffled compote - lavender - rare, nice example, a key color**
- 225 372. **Holly ruffled compote - green - hard to find color, a beauty**
- 175 373. Holly ruffled compote - amethyst - scarce color, very pretty
- 115 374. Holly ruffled compote - vaseline - glows
- 115 375. Holly ruffled compote - odd yellow/green - rare color
- 40 376. Holly ruffled compote - blue
- 210 377. Palm Leaf & Fan 5 1/2" handgrip plate - marigold - extremely rare, never seen another
- 650 378. **Fenton's Peacock & Urn plate - blue - very nice example**
- 450 379. **Fenton's Peacock & Urn plate - marigold - great irid.**
- 225 380. **N's Regal sauce dish - peach opal or marigold opal - different, only one reported, signed Northwood**
- 75 381. Curved Star child's dish - blue - very rare & a cutie, outstanding little miniature
- 1200 382. **Butterfly & Berry hatpin holder - marigold - rare**
- 5500 383. **Homestead chop plate - blue - the finest example I have seen, signed Nu Art, a top piece in this collection, super!**
- 300 384. **Cosmos & Cane punch bowl shaped compote - white - frosty & tough to find**
- 800 385. **M'burg Night Stars 2 hdd bon bon - marigold - outstanding pastel radium irid., extremely rare**
- 375 386. **M'burg Night Stars 2 hdd bon bon - olive green - super irid., has small spot of epoxy**
- 230 387. Peacock at the Fountain tumbler - white - scarce
- 50 388. Acorn Burrs tumbler - dark marigold
- 1000 389. **M'burg Vintage IC shaped sauce w/Hobnail back - green - only one known, satin irid., one of John's favorites, a little jewel**
- 800 390. **M'burg Vintage IC shaped sauce w/Hobnail back - marigold - much rarer than the large bowls**
- 700 391. **M'burg Vintage IC shaped 10" bowl w/Hobnail back - marigold - satin & extremely rare, a beauty**
- 80 392. Brocaded Acorn oyster cocktail glass - rose dawn (lavender) - rarely seen
- 400 393. **Miniature glass Sandal - marigold - extremely rare miniature, only one ever reported!, a key miniature**
- 40 394. Kings Crown wine glass - marigold - a rare little wine
- 35 395. Scroll & Cane cream pitcher - marigold - dark & cute
- 115 396. Soda Gold salt & pepper shakers - smoke - very rare set, purchased these in 1971
- 95 397. Rising Sun juice glass - marigold - very rare
- 95 398. Rising Sun tumbler - marigold - scarce, nice
- 1000 399. **Lions 7 1/2" plate - marigold - an extremely rare plate, nice**
- 1100 400. **Owl hatpin - pastel green - extremely rare hatpin, highly sought after by hatpin collectors**

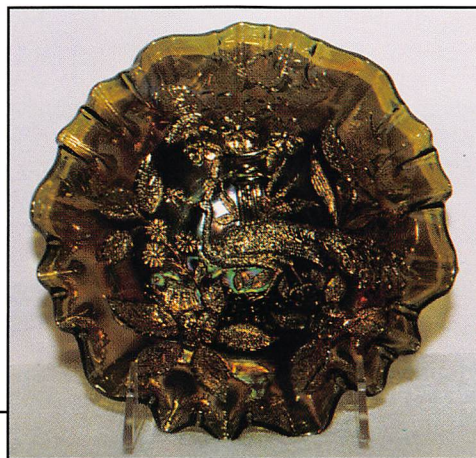
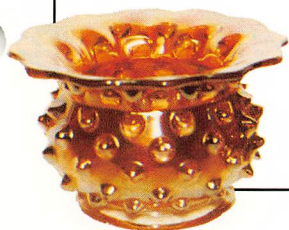
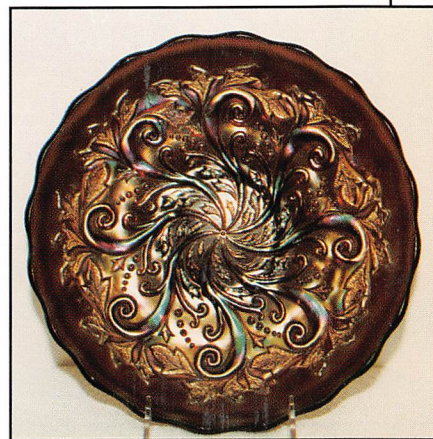
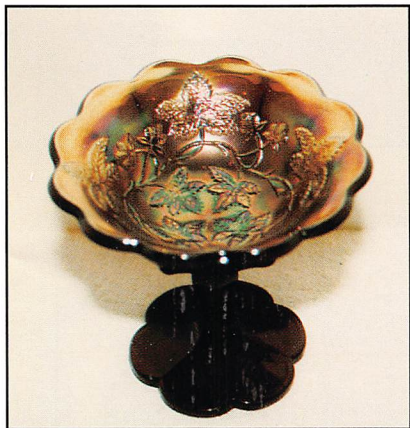




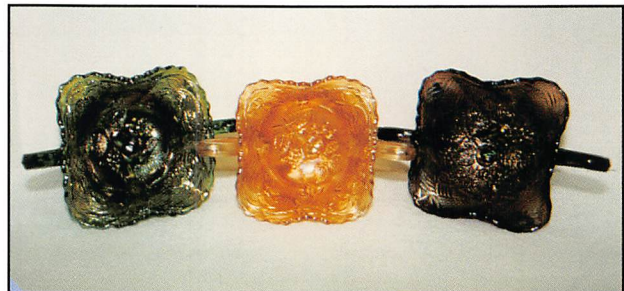
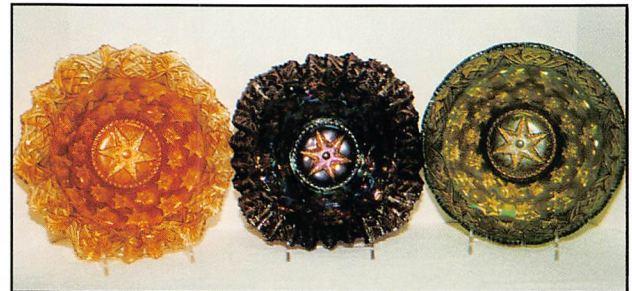
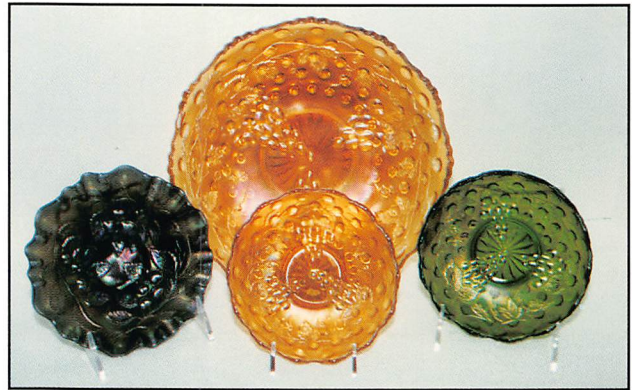
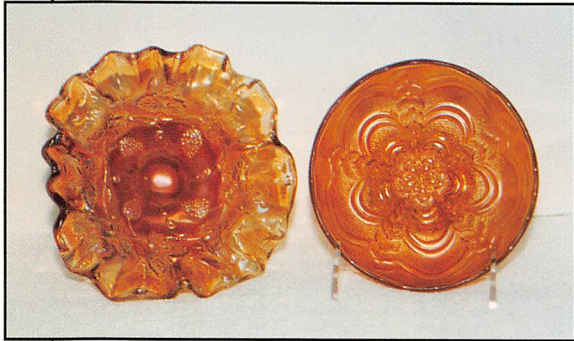
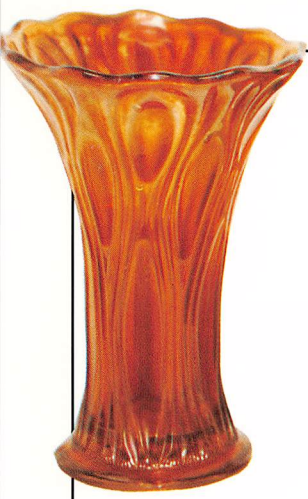














- 1500 401. Strawberry hatpin - green - I've never sold another, very rare, great color & irid.
- 135 402. Banded Criss Cross hatpin - purple - beautiful green & purple irid., & certainly rare
- 205 403. Diamond Spearhead hatpin - purple - long spearhead containing many long diamonds, rarely seen, very nice
- 250 404. Arches & Sand tumbler - marigold - only 2 known, from Don Moore's collection
- 130 405. Holly rosebowl - marigold - nicer than most of these, rare in a rosebowl
- 1600 406. Peacocks ruffled bowl - aqua opal - opal goes from top to bottom w/pastel multi-colored irid., top of the line
- 600 407. Peacocks ruffled bowl w/plain back - white - frosty & nice, a beauty
- 105 408. Drapery Variant small tumbler (2 3/4" high) - marigold - very rare size
- 65 409. 1984 ACGA Seacoast cuspidor - red
- 105 410. 1982 ACGA Seacoast cuspidor - peach opal
- 95 411. 1983 ACGA Seacoast cuspidor - green
- 200 412. Heavy Pineapple three ftd fruit bowl - marigold - extremely rare item, just a few in any color known, very nice example
- 500 413. Basketweave Open Edge 2 sides up basket - red - nice, as red as they come
- 425 414. Basketweave Open Edge 2 sides up basket - green - rarely seen, very nice color & irid.
- 260 415. Basketweave Open Edge 2 sides up basket - white - frosty, pastel irid., nice
- 330 416. Basketweave Open Edge 2 sides up basket - ice green - glows under blacklight
- 135 417. Basketweave Open Edge 2 sides up basket - vaseline - glows under blacklight
- 6500 418. M'burg Many Stars square shaped crimped edge bowl - amethyst - super radium blue irid. on this only known example, wonderful!
- 275 419. Field Flower water pitcher - purple - as good as you will ever see!
- 80 420. Field Flower tumbler - purple - super
- 1700 421. Corn vase - marigold - super, dark all the way down, stalk base, a beauty
- 700 422. Corn vase - green - deep color & very pretty, a super piece
- 350 423. Corn vase - purple - nice & always in demand
- 275 424. Corn vase - white - frosty w/stalk base
- 95 425. Beaded Basketweave basket - white - has straight up sides, very rare color & shape
- 260 426. Beaded Basketweave basket - purple - has straight up sides, super irid., a dandy
- 235 427. Beaded Basketweave basket - lime green - has flared sides, unusual color
- 95 428. Beaded Basketweave basket - odd amethyst - has flared sides
- 850 429. Peacock Tail 6" plate - blue - extremely rare little plate
- 9000 430. M'burg Flowering Vine tall compote - green - super radium irid., stands 9" tall, only one known in green, a must for Millersburg collectors, a key piece for any collection!
- 300 431. Estate breakfast cream & sugar - blue opal - extremely rare set
- 55 432. Imperial Flute ftd salt dip - marigold - has old Imperial Cross mark on base, a rare mini.
- 40 433. 1969 Anaheim Imperial Flute ftd salt dip - blue
- 225 434. "Chessie" by Fenton chessie cat souvenir - deep purple - December 1970, a beauty
- 155 435. Parlor Panels 11 1/2" vase - purple - rare vase w/super irid.
- 185 436. Rooster hatpin - red - hard color to find
- 50 437. Rooster hatpin - amber - scarce color
- 65 438. Rooster hatpin - sapphire blue w/red comb
- 60 439. Rooster hatpin - celest blue -
- 65 440. Rooster hatpin - celest blue w/painted background & red comb
- 375 441. Peacock at Urn master IC bowl - marigold - a super pretty example
- 725 442. Grape & Cable candle lamp - purple - a super example w/old Northwood paper label on inside of shade, super example
- 675 443. Grape & Cable candle lamp - marigold - a very nice example w/good color & irid.
- 225 444. 1981 HOACGA Good Luck candle lamp - red
- 650 445. M'burg Multi Fruits & Flowers tumbler - marigold - super radium, a beautiful tumbler
- 650 446. M'burg Gay Nineties tumbler - marigold - fantastic color & radium irid., very rare
- 225 447. M'burg Marilyn tumbler - green - satin & super, tough to find in this color
- 85 448. Shriners 1917 Donkey tumbler - irid. milkglass, rare, only one John has seen
- 950 449. Panelled Dandelion tankard water pitcher - green - handle is applied on seam instead of panel, it's a completely different mold than normal, very rare, a beauty
- 1350 450. Panelled Dandelion tankard water pitcher - amethyst - super pretty color & irid.
- 8500 451. Panelled Dandelion tumblers (5) - amethyst - choice, very nice examples
- 5250 452. Garden Path Variant chop plate - purple - super example w/blue irid. a dandy plate!
- 275 453. Starfish CRE ruffled compote - purple - extremely rare shape, only one John has ever seen in purple
- 350 454. Concord ruffled bowl - green - a very pretty example of this rare pattern
- 200 455. Concord ruffled bowl - marigold - has great color & irid.
- 2200 456. Butterfly & Berry 9" vase - red - this is a super example w/red irid., the best I've seen
- 150 457. Shriners 1909 Louisville Double shot glass - cranberry to clear - a very rare miniature



- 105 458. **Shriners 1908 St. Paul Sheath of Wheat shot glass - cranberry w/gold wheat - extremely rare & highly desirable**
- 85 459. **Shriners 1911 Rochester hdd double shot glass - cranberry & clear - very rare item**
- 30 460. 1907 Los Angeles shot glass - cranberry & clear, rarely seen
- 50 461. 1909 Los Angeles Grape toothpick - grape colored, very rare & pretty
- 1400 462. **M'burg Poppy flat top compote - green - radium & spectacular, irid. on both sides, a special piece, very few known**
- 95 463. Ribbon Tie 3 in 1 edge bowl - powder blue - super pretty color, a lovely piece
- 700 464. **Kittens 6 ruffle bowl - blue - extra nice example, the best I've seen**
- 185 465. Kittens 6 ruffle bowl - marigold - super
- 1100 466. **M'burg Hanging Cherries 3 in 1 edge sauce - blue - super satin irid., a rare item**
- 450 467. Waterlily & Cattails table set - marigold - super dark example & every piece matches
- 60 468. Imperial Pastel Swan - blue opal - made between 1925-1935
- 50 469. Imperial Pastel Swan - green opal - ditto
- 50 470. Imperial Pastel Swan - pink - ditto
- 225 471. **Stag & Holly IC shaped lg size ftd bowl - aqua - a super example in this rare color**
- 260 472. Banded Grape & Cable pintray - purple - very scarce banded version
- 6500 473. **Vintage whimsey ladies cuspidor - marigold - only one known w/nice, dark color, a cute little piece, a superstar!**
- 700 474. **Zipper Loop lamp - smoke - 9 3/4", 5 1/2" across base, rarely seen color, large size**
- 450 475. **Zipper Loop lamp - smoke - 8 1/4", 4 3/4" across base, very nice example**
- 150 476. Zipper Loop lamp - smoke - signed IG
- 400 477. Two Flowers IC shaped ftd bowl - blue - fantastic irid., a top notch piece
- 1100 478. **Kittens cup & saucer - blue - saucer has some epoxy, but has super irid., also has two sets of kitties, cup is purrrfect, rare**
- 275 479. Kittens cup & saucer - marigold - nice & dark w/great detail
- 2700 480. **M'burg Many Stars ruffled bowl - blue - satin multi-colored irid., looks blue, super rare & fantastic**
- 300 481. **M'burg Strawberry tri-cornered bowl - green - radium & nice, rare shape**
- 500 482. **Imperial Grape water pitcher - smoke - excellent color & irid., scarce**
- 110 483. Imperial Grape tumblers (4) - smoke - very nice & hard to find, choice
- 800 484. **Sun's Up hatpin - lavender - beautiful irid., extremely rare, one of the top hatpins, a larger size hatpin & one of the most sought after**
- 25 485. Butler's Mirror hatpin - purple
- 65 486. Dragon Fly hatpin - purple - super blue irid.
- 45 487. Dragon Fly variant hatpin - purple - background is not irid., hard to find
- 1600 488. **Illinois Soldiers & Sailors plate - blue - very nice**
- 400 489. **Fine Rib 12" vase - cherry red - super irid.**
- 425 490. **Fine Rib 9 1/2" vase - cherry red - also super**
- 575 491. **Drapery Variant 6" plate - marigold - very rare, the only one we've seen**
- 250 492. Grape & Cable shot glass - purple - nice
- 120 493. Grape & Cable shot glass - marigold - nice
- 950 494. **M'burg Roses & Fruits bon bon - green - radium irid., a super example, very rare**
- 700 495. **M'burg Roses & Fruits bon bon - marigold - radium w/great color & irid.**
- 725 496. Westmoreland Buzz Saw 14 pc. punch set - red - signed Westmoreland, a great piece of new glass, only 140 sets made
- 80 497. Swirled Flute 8" vase - vaseline - rare color
- 1300 498. **Peacock & Grape spt ftd ruffled bowl - red - fantastic piece, as nice as they get!**
- 500 499. **Berry Band & Ribs cordial set, tray, decanter, & 4 cordials - marigold - rare pattern & set**
- 300 500. Vining Leaf ftd vase - marigold - nice, a rare vase
- 7000 501. **M'burg Diamonds cuspidor - marigold - radium & dark, only one known, a super piece for M'burg collectors or cuspidor collectors, a star of the auction!**
- 450 502. **Diamond Points 10 1/4" vase - ice blue - lots of irid., a nice vase**
- 325 503. **Votive Light - marigold - extremely rare, signed M inside a larger C for Crystalis Mexico, only a few of these known**
- 35 504. King's Crown wine - marigold - scarce
- 2200 505. **M'burg Peacock at Urn giant compote - amethyst - satin, excellent irid., rare**
- 285 506. **Orange Tree wine goblet - green - very rare**
- 85 507. **Orange Tree wine goblet - vaseline - glows**
- 40 508. Orange Tree w/bands wine goblet - light smokey, hard to find w/bands
- 115 509. Orange Tree w/bands wine goblet - blue
- 1200 510. **Peacock & Grape spt ftd plate - green - very nice example**
- 650 511. **Grand Thistle water pitcher - amber - only one known, a super rare piece, beautiful**
- 300 512. **Grand Thistle tumbler - amber - have only seen two in this color, a super tumbler**
- 145 513. Fine Cut & Star banana boat 5 1/2" shaped dish - marigold - rare, only one we've seen
- 55 514. Tarentums Virginia card tray shaped dish - marigold - rare & pretty
- 75 515. Estate miniature 5" vase - smoke - scarce
- 105 516. **Woodlands miniature vase - marigold - tough to find, a little cutie**
- 200 517. **Scroll Embossed miniature compote - purple - great irid., a cute little compote**



- 450 518. Stippled Three Fruits collar based ruffled bowl - aqua opal - a super bowl!
- 550 519. M'burg Nesting Swan ruffled bowl - green - radium, the best I've ever seen, a super dooper!
- 760 520. Hobstar pickle caster - marigold - has metal frame, never seen one before, rare
- 400 521. Kittens 3" vase - blue - a super blue Kittens piece, extra rare in a vase
- 475 522. Kittens toothpick - blue - two kitties, very rare
- 425 523. Kittens toothpick - blue - bright blue color, a little cutie
- 200 524. Pinwheel 6 1/2" vase - purple - scarce & pretty
- 145 525. Pinwheel 6 1/2" vase - marigold - scarce & pretty
- 700 526. Ftd. Orange Tree pitcher - blue - very nice
- 1x60 527. Ftd. Orange Tree tumblers (3) - blue - good feet & nice irid., choice
- 2x35 528. Turkey toothpick - amethyst - signed Robert Hansen
- 95 529. Owl Toothpick - bright blue/green - signed Robert Hansen
- 105 530. Frog paperweight - blue/green - signed Robert Hansen
- 125 531. Peacock & Stork small mug - blue - signed Robert Hansen
- 50 532. Peacock & Stork small mug - blue - Unsigned Robert Hansen
- 35 533. Forget-me-not toothpick - blue - signed Robert Hansen
- 75 534. Maple Leaf toothpick - blue - signed Robert Hansen
- 70 535. Swan salt - blue/green - signed Robert Hansen
- 320 536. L.E. Smith Swan salt - marigold - (these are old), Smith made glass as early as 1909
- 55 537. L.E. Smith Swan salt - cranberry
- 75 538. L.E. Smith Swan salt - pastel green
- 80 539. L.E. Smith Swan salt - milkglass - not irid.
- 40 540. File whimsey vase - marigold - best I've seen, a super vase
- 525 541. M'burg Hobnail rosebowl - green - fantastic irid., an extremely rare color, only 3 or 4 known, M'burg rarity
- 1600 542. Rose Garden milk pitcher - marigold - a nice example, very rare, a beauty
- 550 543. M'burg Blackberry ruffled sauce - marigold - radium & nice
- 60 544. M'burg Wild Flower compote - amethyst - has gorgeous satin irid., very, very rare w/few known, beautiful
- 1400 545. Virginia Blackberry miniature child's pitcher - blue - only one known, a cutie! to me, the finest miniature known, has crack
- 625 546. Virginia miniature pitcher - clear - not irid.
- 0 547. Nip bottle - marigold - all labels & cap intact, rare, a super miniature
- 500 548. Stippled Grape & Cable plate w/basketweave back - green - a pretty plate
- 750 549. Grape & Cable 7 pc. water set - green - super irid., a great set
- 1100 550. M'burg Hanging Cherries compote - green - radium & gorgeous, super rare
- 225 551. Hearts & Flowers ruffled bowl - reninger blue - only one we've heard of in this color, very nice but has flake on edge
- 1400 552. M'burg Peacock IC bowl - amethyst - radium & very nice, rare w/out bee
- 325 553. M'burg Peacock IC bowl - lavender - minor epoxy spot on edge but very nice
- 500 554. Miniature Candelabra - marigold - a cute miniature by Cambridge, extremely rare
- 125 555. Kittens 4 sides up dish - marigold - two kitties, scarce
- 2100 556. M'burg Strawberry Wreath compote - vaseline - one leaf in pattern is blank, only one known in vaseline, super, super!
- 125 557. Orange Tree IC shaped bowl - blue - super spectacular!
- 1150 558. M'burg Fruit Basket bon bon - amethyst - extremely rare, first I've ever sold
- 300 559. Fenton Peacock at Urn ruffled bowl - amethyst - hard color to find, pretty
- 185 560. Fenton Peacock at Urn 3 in 1 edge bowl - marigold - dark, rare shape
- 325 561. M'burg Leaf & Little Flowers sherbet shaped compote - green - radium & pretty
- 400 562. M'burg Leaf & Little Flowers sherbet shaped compote - amethyst - radium & pretty
- 225 563. M'burg Leaf & Little Flowers sherbet shaped compote - marigold - radium & pretty
- 375 564. Stippled Estate miniature vase - peach opal - one of two known in peach opal, a great miniature, wonderful!
- 100 565. Fancy Cut miniature pitcher - marigold - part of child's set, cute
- 3300 566. M'burg Rose Columns vase - amethyst - an extremely rare & desirable piece, has excellent irid.
- 195 567. N's Poppy Pickle dish - purple - scarce color, looks red in bright light
- 900 568. M'burg Hobnail Swirl cuspidor - marigold - dark & super & rare
- 850 569. M'burg Hobnail Swirl cuspidor - amethyst - super & rare, a great example
- 115 570. Amarylis tri-cornered compote - marigold - pretty pastel irid.
- 2600 571. M'burg Hanging Cherries 6" flat plate - marigold - radium, a choice piece of M'burg, it doesn't get much better!
- 2200 572. M'burg Blackberry Wreath 6" flat plate - marigold - radium & gorgeous! also a choice piece



- 275 573. Starbrite 6 1/2" vase - green - extremely rare, only one I've seen, pretty
- 250 574. Strawberry miniature berry set - marigold - only set ever reported, a cute little set!
- 200 575. Cambridge Hobstar napkin ring - marigold - extremely rare & desirable
- 1200 576. Hobstar & Feather giant rosebowl - green - super, super irid., has epoxy on one point on base
- 145 577. Bo Peep mug - marigold - very, very dark
- 900 578. Zipper Loop finger lamp - marigold - 5 3/4" tall by 4 1/4" across base, super color & even from top to bottom
- 700 579. Zipper Loop lamp - marigold - 8" high, 5 1/2" across the base, super
- 700 580. Zipper Loop lamp - marigold - 7 3/4" high, 4 1/4" across base, outstanding
- 300 581. M'burg Strawberry Wreath 10" ruffled bowl - vaseline - super rare color & only one I've seen x
- 375 582. M'burg Holly square crimped edge sauce - green - radium & an extremely rare shape
- 105 583. M'burg Holly crimped edge sauce - green - radium & super, a little cutie
- 550 584. Peacocks 9" plate w/ribbed back - blue - super irid., fantastic
- 550 585. Peacocks 9" plate w/ribbed back - amethyst - nice & always in demand
- 650 586. Peacocks 9" plate w/ribbed back - marigold - an outstanding example
- 400 587. Peacocks 9" plate w/ribbed back - ice green - as good as they get
- 850 588. M'burg Grape Leaves 3 in 1 edge bowl - amethyst - radium, rare & a super pretty bowl
- 150 589. Miniature Hobnail water pitcher - marigold - only one known, a must for miniature collectors, nice color & irid.
- 200 590. Miniature Hobnail tumbler - marigold - only 6 tumblers known, cute, nice irid.
- 350 591. Asters small rosebowl - marigold - only one known, a neat little rosebowl, pretty
- 125 592. Curved Star rosebowl - marigold - very small, rare & a cutie
- 155 593. Arcadia Lace small rosebowl - marigold - a little light but first one I have seen
- 145 594. Palm Beach w/Gooseberry inter. rosebowl - white - very scarce, a little jewel
- 85 595. Fenton stretch small rosebowl - red - very rare in this shape & size
- 2250 596. M'burg Fleur De Lis dome ftd rosebowl - amethyst - super blue radium irid., only three known & the other two have damage, spectacular piece!
- 525 597. Embroidered Mums ruffled bowl - blue - electric irid., super!
- 2800 598. Diamond Points bushel basket - blue - extremely rare, seldom offered for sale
- 155 599. Paneled Daisy & Cane hdd basket - marigold - an extremely rare basket, first I've ever sold
- 425 600. Daisy Cut bell - marigold - upgraded several times, super!
- 550 601. Buzz Saw small size cruet - green - outstanding example, top notch miniature
- 195 602. Rose Sprig miniature loving cup - marigold - one of two known, very rich color
- 1700 603. Fanciful 9" plate - blue - outstanding blue radium type irid., best I've seen
- 175 604. M'burg Strawberry ruffled sauce - green - radium & pretty, hard to find
- 1600 605. M'burg Seaweed 10" IC shaped bowl - amethyst - very, very rare, only example I have seen
- 140 606. M'burg Peacocks deep berry bowl - amethyst - radium & super
- 95 607. M'burg Peacocks variant deep berry bowl - amethyst - completely different mold
- 800 608. Miniature Twigs JIP CRE 3 1/2" vase - purple - a neat little vase & miniature in a very rare shape, only one I've seen in JIP
- 95 609. Wreathed Cherry cuspidor - blue opal - Terry Crider, no. 11 of 12 made
- 195 610. Wreathed Cherry cuspidor - marigold - Terry Crider, no. 1 of 12 made
- 285 611. Stork & Rushes cuspidor - white - Terry Crider, no. 10 of 12 made
- 550 612. Peacock at the Fountain 7 pc. water set - marigold - a nice matching set
- 875 613. Shell & Sand 9" plate - purple - a very pretty & extremely rare plate
- 750 614. M'burg Big Fish IC shaped bowl - green - super satin irid., wonderful
- 525 615. M'burg Big Fish IC shaped bowl - marigold - satin & super
- 375 616. Acorn Deep round bowl - red slag - very dark & nice
- 560 617. M'burg Hanging Cherries powder jar - green - an extreme rarity, has epoxy on base but almost never sold, radium, pretty
- 325 618. M'burg Multi Fruits & Flowers sherbet - green - radium & very rare, nice
- 525 619. Grape & Cable perfume - purple, super nice
- 425 620. Grape & Cable perfume - marigold
- 500 621. Octagon salt & pepper shakers - purple - super pretty set & also very rare
- 550 622. Rose Show Variant ruffled bowl - marigold - very rare & pretty
- 225 623. Caroline hdd basket - peach opal - lots of opal w/super irid., not often seen
- 300 624. Single Flower hdd basket - peach opal - opal on the rim, very rare piece
- 325 625. Daisy Blossom or Sunflower hatpin - white - a very rare hatpin
- 265 626. Banded Basketweave hatpin - purple - unusual pattern, the only one John has seen, is in metal frame



- \_\_\_\_\_ 627. **Beaded Fringe hatpin - multi-colored beads - an impressive & hard to find hatpin**
- \_\_\_\_\_ 628. Deer Head hatpin - a cute little hatpin that John & Lucile have not seen before
- \_\_\_\_\_ 629. **Pizzaz hatpin - purple - blue & purple irid., one of the finest of hatpins**
- 2600 \_\_\_\_\_ 630. **M'burg Potpourri milk pitcher - 1 of 2 known, has great color, a must for both M'burg & milk pitcher collectors**
- \_\_\_\_\_ 631. **Basketweave Open Edge 2 sides up basket - reverse amberina - rarer than red**
- \_\_\_\_\_ 632. **Basketweave Open Edge 2 sides up basket - ice blue - very rare**
- \_\_\_\_\_ 633. **Basketweave Open Edge 2 sides up basket - smoke - only one I've ever seen**
- \_\_\_\_\_ 634. Basketweave Open Edge 2 sides up basket - black amethyst - rare
- \_\_\_\_\_ 635. Basketweave Open Edge 2 sides up basket - aqua
- \_\_\_\_\_ 636. **M'burg Hobnail cuspidor - marigold - super example & rare**
- 700 \_\_\_\_\_ 637. **M'burg Hobnail cuspidor - amethyst - very rare & desirable**
- \_\_\_\_\_ 638. **Kittens 4 sided ruffled bowl - amethyst - rare color, a super piece**
- \_\_\_\_\_ 639. **Kittens 4 sided ruffled bowl - aqua - also super, only one I've seen**
- \_\_\_\_\_ 640. Nippon ruffled bowl - green - a beauty
- \_\_\_\_\_ 641. **Corn bottle - smoke - super, all these have been upgraded several times**
- \_\_\_\_\_ 642. **Corn bottle - marigold - ditto**
- \_\_\_\_\_ 643. Corn bottle - green - ditto
- 1300 \_\_\_\_\_ 644. **M'burg Peacock 3 in 1 edge sauce - amethyst - radium & spectacular, have never seen another**
- \_\_\_\_\_ 645. **Rising Sun juice pitcher - marigold - super nice marigold, US Glass, great irid.**
- \_\_\_\_\_ 646. **Rising Sun juice tumbler - marigold**
- \_\_\_\_\_ 647. **Flute toothpick - blue - extremely rare color w/outstanding blue irid., a jewel**
- \_\_\_\_\_ 648. **Flute toothpick - lime green - unusual texture to the glass**
- \_\_\_\_\_ 649. **Lovely ftd nut bowl - green - super pretty & very seldom seen**
- 1300 \_\_\_\_\_ 650. **M'burg Rosalind IC shaped sauce - marigold - only marigold example said to be known, super satin!**
- \_\_\_\_\_ 651. **Hearts & Flowers ruffled bowl - ice blue - super dark w/nice irid.**
- \_\_\_\_\_ 652. **M'burg Trout & Fly square bowl - green - satin w/super color, seldom sold**
- \_\_\_\_\_ 653. **M'burg Trout & Fly square bowl - marigold - also satin w/super color, a great pair**
- \_\_\_\_\_ 654. **Kittens cereal bowl - blue - rare color & very nice, top notch miniature**
- \_\_\_\_\_ 655. Kittens cereal bowl - marigold - great detail
- \_\_\_\_\_ 656. **Kittens cereal bowl - marigold - two sets of kitties, exceptionally dark, very rare**
- \_\_\_\_\_ 657. M'burg Holly deep round sauce - amethyst - very rare shape, radium, neat piece
- \_\_\_\_\_ 658. **M'burg Peacock IC shaped sauce - green - radium & spectacular, extremely rare!**
- 850 \_\_\_\_\_ 659. **Princess Lamp - purple - excellent irid., complete w/cloth shade & cord, a beautiful lamp**
- \_\_\_\_\_ 660. Enameled Floral Spray water pitcher - clear - super enameling & irid. on clear base glass
- \_\_\_\_\_ 661. Enameled Floral Spray tumblers (2) - clear - choice, rare
- \_\_\_\_\_ 662. **M'burg Little Stars 9" IC shaped bowl - marigold - radium & a super hard size to find, fantastic color & irid.**
- \_\_\_\_\_ 663. **M'burg Rosalind 9" IC shaped bowl - green - very nice example**
- \_\_\_\_\_ 664. **M'burg Bullseye & Loop 7" squatty vase - amethyst - a very pretty & rare vase**
- \_\_\_\_\_ 665. **M'burg Bullseye & Loop 10 1/2" vase - amethyst - this has been swung**
- \_\_\_\_\_ 666. **Waffle Block & Hobstar lg hldd basket - marigold - not often seen**
- \_\_\_\_\_ 667. Stippled Three Fruits plate w/ribbed back - marigold - dark & super
- \_\_\_\_\_ 668. Acorn Burrs punch cup - white
- \_\_\_\_\_ 669. M'burg Multi Fruits & Flowers punch cup - amethyst
- \_\_\_\_\_ 670. Checkerboard punch cup - marigold - rare
- 1900 \_\_\_\_\_ 671. **M'burg Ohio Star vase - amethyst - super radium irid., gorgeous!**
- \_\_\_\_\_ 672. **Arched Flute toothpick - celest blue - rare**
- \_\_\_\_\_ 673. Imperial Flute hldd toothpick - marigold - has old Imperial Cross mark - rarely seen
- \_\_\_\_\_ 674. Heisey Flute toothpick - marigold - sgn., rare
- \_\_\_\_\_ 675. Octagon toothpick - marigold - an old one
- 750 \_\_\_\_\_ 676. **Lotus & Grape card tray shaped bon bon - red slag - very rare & desirable**
- \_\_\_\_\_ 677. **M'burg Whirling Leaves square crimped edge bowl - amethyst - radium w/multi-color irid., rare shape & beautiful**
- 850 \_\_\_\_\_ 678. **M'burg Ohio Star tall ruffled compote - marigold - 8 1/2" tall w/clear base, very rare piece**
- \_\_\_\_\_ 679. **M'burg Hanging Cherries w/Hobnail exterior ruffled bowl - amethyst - has epoxy on base, rare & beautiful**
- \_\_\_\_\_ 680. Daisy & Cane compote - marigold
- \_\_\_\_\_ 681. Asters compote - marigold - scarce
- 900 \_\_\_\_\_ 682. **M'burg Courthouse IC shaped bowl - amethyst - radium & wonderful**
- \_\_\_\_\_ 683. Vintage tri-cornered sauce - blue
- \_\_\_\_\_ 684. **Wild Rose syrup - marigold - super condition, as nice as they come**
- \_\_\_\_\_ 685. 1993 HOACGA Good Luck whimsey rosebowl - red - one of a kind, great piece for the future
- \_\_\_\_\_ 686. 1991 HOACGA Good Luck whimsey CRE rosebowl - red - one of a kind, neat
- 1200 \_\_\_\_\_ 687. **M'burg Nesting Swan crimped edge square bowl - green - radium & super, rare shape**



688. Waffle Block hdd basket - teal - rare color
- 1600 689. **Poppy Show 9" plate - blue - rare & desirable**
- 600 690. **Holly goblet shaped compote - lime green opal - super & very rare**
- 1450 691. **Holly goblet shaped compote - red - extremely rare color to locate, nice**
692. Holly goblet shaped compote - pastel blue - nice
693. Holly goblet shaped compote - vaseline - nice, glows under blacklight
- 750 694. **Mary Ann three hdd loving cup - marigold - very, very rare, only one I've ever had a chance to sell, super example**
695. **Miniature Morning Glory 3" vase - purple - has flared out top, shortest one John & Lucile have ever seen, a cutie!**
696. **Miniature Morning Glory 3 1/2" vase - marigold - flared out top, also a cute shorty**
697. Miniature Morning Glory 6" vase - marigold - whimsy top, unusual shape
- 1150 698. **N's Town Pump - purple - a wonderful example, a classic, great color & irid.**
699. Tiger Lily 7 pc. water set - green - matching
700. Miniature Ripple 4 1/2" vase - green - short
701. Miniature Ripple 5" vase - marigold - cute
702. **Corn vase - ice green - stalk base, super**
703. **Corn vase - lime ice green - very unusual color, stalk base**
704. **Corn vase - dark ice green - unusual darker shade, plain base**
705. **M'burg Peacock at Urn IC bowl w/beads on the urn - amethyst - satin & super, very rare w/beads on the urn**
706. **Northwood/Dugan Pastel Swan - lime green - a completely different color, only one John has ever seen, extremely rare**
707. **Northwood/Dugan Pastel Swan - peach opal - lots of opal, super**
708. **Northwood/Dugan Pastel Swan - dark marigold - super example, rare**
709. **Northwood/Dugan Pastel Swan - pastel marigold - very scarce**
710. **Northwood/Dugan Pastel Swan - white - this has irid., only a few known, very rare**
711. Northwood/Dugan Pastel Swan - pink - pretty
712. Heisey Colonial ruffled compote - amethyst - extremely rare, & unusual
713. **Miniature Coal Scuttle - marigold - a very cute little miniature, great example**
714. Heisey Crystalite miniature cream & sugar - marigold - signed Heisey, cute set & rare
715. **Spider hatpin - ice green - extremely rare, one of the top hatpins in the sale**
716. **Dimples hatpin w/rhinestone edge - purple - a key hatpin, only one John has ever seen, super irid.!**
717. Garden Path hatpin - purple - scarce
718. **M'burg Strawberry Wreath ruffled compote - green - radium & super**
719. **M'burg Strawberry Wreath ruffled compote - amethyst - radium & super**
720. **M'burg Strawberry Wreath ruffled compote - marigold - radium, wow!**
721. M'burg Grape Wreath Variant crimped edge sauce - amethyst - radium & unusual
- 1800 722. **Rose Show ruffled bowl - ice green - very rare & a fantastic piece**
723. **Rose Show ruffled bowl - aqua opal - lots of opal & pastel, pretty**
724. **Rose Show ruffled bowl - marigold - dark & super**
725. **Ladies Slipper - marigold - a classic miniature, rare, stippled w/very nice irid.**
726. **Wooden Shoe - marigold - another classic miniature, rare**
727. Boot - marigold - has Texas star in bottom of boot
728. **M'burg Many Stars 3 in 1 edge bowl - marigold - radium & dark, best I've seen, has 6 pointed star**
729. M'burg Grape Wreath Variant crimped edge deep sauce - green - radium & super
730. M'burg Blackberry Wreath 3 in 1 edge sauce - amethyst - satin & sweet
731. **Thin Rib & Drape 5 1/2" vase - purple - super, hard to find in purple**
732. **Thin Rib & Drape 4 3/4" vase - green - extremely rare color for this little vase**
733. Thin Rib & Drape 5" vase - marigold - dark & super
734. **M'burg Zig Zag tri-cornered crimped edge bowl - green - radium, rare shape, super**
735. Wild Blackberry 9" ruffled bowl - green
736. **Blackberry Spray CRE JIP basket - yellowish amber - unusual color**
737. Stippled Good Luck ruffled bowl - blue - very nice
738. **Rabbit bank - marigold - very rare, has anyone seen another?**
739. Pig bank "Save w/Marathon" "Ohio Oil Company" - marigold
740. Wise Owl bank - marigold
741. **M'burg Grape Wreath Variant 10" tri-cornered bowl - marigold - radium & rare, a beauty**
742. Maple Leaf hdd basket - marigold
- 375 743. **M'burg Country Kitchen 10" square bowl - marigold - extremely rare w/nice color**
744. Imperial Grape hdd basket - smoke - nice
- 1700 745. **M'burg Hanging Cherries milk pitcher - marigold - super dark w/super irid., best example I've seen**
746. Cosmos & Cane spooner - honey amber - nice
747. Tiger Lily pitcher - ice green - signed LIG, not old



- \_\_\_\_ 748. Tiger Lily tumblers (4) - ice green - signed  
LIG, not old, choice
- \_\_\_\_ 749. Western Thistle small berry bowls (2) - blue  
- old, choice
- \_\_\_\_ 750. Moonprint compote - marigold - nice color
- \_\_\_\_ 751. 1982 NCCC Inverted Strawberry cuspidor -  
plum - super piece
- \_\_\_\_ 752. Waffle Block salt & pepper shakers -  
marigold - depression era, signed Hazel  
Atlas, cute little set



#### BOOKS TO SELL

Encyclopedia of Carnival Glass - Sherman Hand  
Carnival Glass Tumblers - Richard Owens  
Millersburg, The Queen of Carnival - Bill Edwards  
Northwood, The King of Carnival - Edwards  
Fenton Carnival Glass - Early Years - Edwards  
Imperial Carnival Glass - Early Years - Edwards  
Rarities in Carnival Glass - Edwards  
The Shape of Things in Carnival Glass - Don Moore, Autographed  
God & Home Carnival Glass Super Star - O. Joe Olson  
Art Colored & Cameo Glass - Harry H. Whitlow  
What is it Jabe? - Jabe Tater - Volumes I & II, choice  
Tumblers with a Past by LeRoy C. & Mertie B. Simon, autographed  
Misc. books on Carnival Glass - choice



**THANKS FOR ATTENDING!**  
**SEEK AUCTIONS**





Seeck Auctions  
405 1st St.  
Grafton, Iowa 50440

FIRST CLASS

