



**AUCTION SERVICE**  
**Carnival Glass Auction**

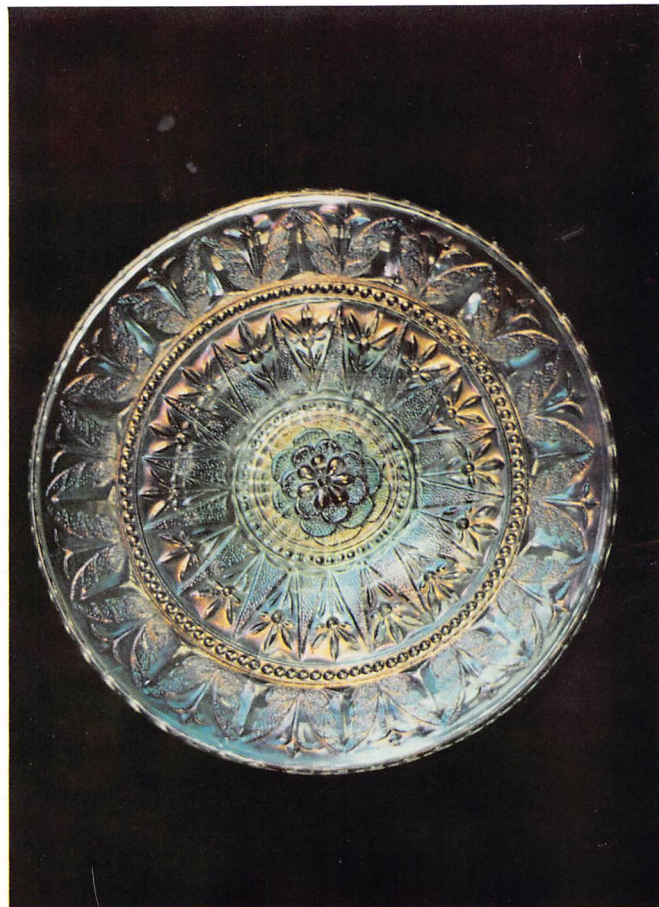
**Friday & Saturday,  
March 18 & 19, 1994**

6:30 pm, Friday, Lots 1 - 140, 4:00 pm preview  
9:30 am, Saturday, Lots 141 - end, 8:00 am preview

at the **Holiday Inn I-70 East**

6990 E. 21st Street, Indianapolis, IN 46219  
(I-70 at Shadeland Ave. Exit 89)

**(317) 359-5341**





Selling at auction an outstanding collection of consignment glass from all over the country. Included in this excellent assortment are some superb miniatures and a number of beautiful rarities. This is not one to miss!

The Holiday Inn I-70 East will host the event. It's conveniently located off exit 89 of I-70 in Indianapolis. For reservations, you may call the motel direct at (317) 359-5341. Make your plans now, and we hope to see you there!

Mail bids due by Thursday, March 17, 1994.

Mail Bids honored under the following conditions:

1. No deposit required. Bidders will take full responsibility to honor any and all bids we execute for them. Payment in full plus postage and handling required after notification and before we ship any item to them.
2. **Items are bid on in perfect condition with average or above average iridescence OR as listed in the brochures. Bids will not be carried out when damage on an item has been found during the auction.**
3. Successful bidders will be notified by collect call from the auctioneer **(so be sure to include phone number)**.
4. Phone inquiries about the glass or any other questions are welcome.
5. All non-successful will receive a result summary in the mail. Results of all bids will be provided.
6. If you have some other person at the auction bidding for you, they must pay for the item before taking it.
7. Phone, FAX and Mail bids due by Thursday, March 17, 1994.

## Burns Auction Service

Tom Burns 109 E. Steuben St. Bath, New York 14810 (607) 776-7942
---

Bill Richards 44 Water St. Poland, Ohio 44514 (216) 757-2001
---

Bill Richards III 524 Poland Ave. Struthers, Ohio 44471 (216) 755-2620
---

- |  |   |
|--|---|
| <p>_____ 1. European Aramus Tumbler - Mari.</p> <p>_____ 2. Odd Oval and Round Punch Cup - Mari.</p> <p>_____ 3. Cambridge Inverted Feather Tumbler - Green (extremely rare but chipped on base edge)</p> <p>_____ 4. Fenton Interior Ribbed Mug - Dk. Mari.</p> <p><u>200</u> _____ 5. <b>FENTON PANTHER ROUND FLARED FTD. BERRY BOWL - AMY. (VERY RARE COLOR ON A SCARCE ITEM; MAY HAVE A PINHEAD)</b></p> <p>_____ 6. (2) Imperial Swirl Vases - Smoke (sold per each for pair)</p> <p>_____ 7. Imperial Chateline Water Pitcher - Crystal (scarce)</p> <p>_____ 8. M'burg Ohio Star Creamer - Crystal</p> <p>_____ 9. M'burg Ohio Star Spooner - Crystal</p> <p>_____ 10. M'burg Ohio Star Sugar Base only and damaged Covered Butter - Crystal (sold together)</p> <p>_____ 11. N G &amp; C Candlestick - Pastel Mari. (nice irid.)</p> <p>_____ 12. Unusual 4" Czech Enameled / Frosted Cruet and Stopper - Mari. (irid. handle and stopper - nice decoration)</p> <p>_____ 13. Heisey Melon Ribbed Spittoon - Lt. Blue (rare and unusual; really nice irid.)</p> <p>_____ 14. <b>SUNS UP LARGE HATPIN - DARK (VERY RARE AND EXTREMELY DESIRABLE; VERY TOUGH TO FIND)</b></p> <p><u>400</u> _____ 15. <b>IMPERIAL POPPY SHOW LARGE VASE - PASTEL MARI. (ABSOLUTELY SUPER ITEM; FANTASTIC YELLOW IRID. WITH PINK AND BLUE HIGHLIGHTS)</b></p> <p><u>1100</u> _____ 16. Dugan Fishermans Mug - Pur. (nice color and irid.)</p> <p>_____ 17. Westmoreland Pearly Dots 6 Ruffled Bowl - Lt. Blue Opal. (scarce; silvery)</p> <p>_____ 18. Odd Imperial Jewels Pinched In Turned In Vase with Iron Cross - Pur. (sorta spittoon shaped)</p> <p>_____ 19. Fenton Stretch Nut Cup - Ice Green</p> <p>_____ 20. <b>IMPERIAL EMBOSSED SCROLL MINIATURE RUFFLED COMPOTE - PUR. (RARE; VERY DESIRABLE WITH FANTASTIC IRID.)</b></p> | <p>_____ 21. Odd Blown Drapery Individual Salt Dip - Mari. / Clear (very unusual)</p> <p>_____ 22. European African Shield Hat / Vase - Mari. (unusual pattern)</p> <p>_____ 23. Heisey Wide Panel Individual Salt Dip - Mari. (very scarce)</p> <p>_____ 24. Unusual Federal Miniature Beer Mug - Mari. (very scarce; signed with F in shield)</p> <p>_____ 25. Heavy Shell Toothpick Novelty - White (shaped like shell)</p> <p>_____ 26. Westmoreland Intaglio Flower 4 sided Basket with Wire Handle - Lt. P. Opal. (scarce and very desirable)</p> <p>_____ 27. Fenton Stretch Nut Cup - Mari. (scarce)</p> <p>_____ 28. Westmoreland Jack in the Pulpit Hat - Mari.</p> <p>_____ 29. European Split Diamond Creamer - Mari.</p> <p>_____ 30. Fenton Flared Individual Salt Dip - Ice Green</p> <p>_____ 31. Fenton Flared Individual Salt Dip - Celeste Blue</p> <p>_____ 32. Westmoreland Little Beads Ruffled Compote - P. Opal. (scarce)</p> <p>_____ 33. Cambridge Near Cut Advertising Mug - Mari. (very scarce; nice; stenciled "Lake Mills, Iowa")</p> <p>_____ 34. Very Unusual "Sprocket" Shaped Daisy Flute Individual Salt Dip - Mari. (unusual; never seen another one)</p> <p><u>200</u> _____ 35. <b>MINIATURE FIGURAL LADIES SLIPPER - LT. MARI. (VERY SCARCE; UNUSUAL)</b></p> <p>_____ 36. Dugan Miniature Basketweave Flower Basket - Mari.</p> <p>_____ 37. <b>MINIATURE THUMBPRINT AND STAR NEAR CUT SHOT GLASS - MARI. (VERY RARE; NEVER SEEN ANOTHER ONE - NEAT!)</b></p> <p>_____ 38. Dugan Miniature Tree of Life Flower Basket - Mari.</p> <p>_____ 39. Fenton Stretch Nut Cup - Vaseline</p> <p>_____ 40. European Rose Bouquet Creamer - Mari.</p> <p>_____ 41. <b>UNUSUAL NEAR CUT SWIRL MINIATURE STEIN - MARI. (VERY RARE; 1ST I'VE SOLD)</b></p> <p>_____ 42. Golden Wedding 1/10 Nip Bottle with Label - Mari. (unusual with label)</p> |
|--|---|



43. Jeanette Butterfly Pin Tray - Lt. Blue (scarce)  
 44. Miniature Beaded Change Purse - Dark  
 45. **DUGAN MINIATURE INTAGLIO FLOWER ALMOND CUP OR COMPOTE - DK. MARI. (VERY RARE AND VERY DESIRABLE; A SUPER ITEM)**  
 46. **FIGURAL CHERUBS TOOTHPICK HOLDER - LT. MARI. (EXTREMELY RARE NOVELTY; NOT MANY KNOWN)**  
 47. Jeanette Butterfly Pin Tray - Mari.  
 48. **IMPERIAL FLUTE STEMMED WINE GLASS - MARI. (ODD SIZE; VERY DESIRABLE ITEM)**  
 265 49. **EUROPEAN DRAPERY MINIATURE SHOT GLASS - DK. MARI. (SUPER DESIRABLE IN THIS SIZE; GREAT COLOR)**  
 50. **5" U.S. GLASS "FRISCO" MINIATURE SWUNG VASE FROM TOOTHPICK - LT. MARI. (EXTREMELY RARE ITEM; UNUSUAL SHAPE)**  
 51. Fenton Stretch Flared Individual Salt Dip - Vaseline  
 52. **UNUSUAL FIGURAL COWBOY (OR SOLDIER) BOOT - LT. MARI. (RARE AND UNUSUAL; AN ODD ITEM)**  
 53. **UNUSUAL EUROPEAN MELON RIBBED STEMMED CORDIAL - MARI. (VERY RARE ITEM; TOUGH TO FIND)**  
 54. Odd Panelled Handled Mug - Lt. Mari. (stenciled advert.)  
 55. **UNUSUAL FLUTE STEMMED CORDIAL - LT. MARI. (REALLY SCARCE ITEM)**  
 56. **UNUSUAL "CUT RIBBED PANEL" SHOT GLASS - LT. MARI. (RARE PATTERN; I HAVEN'T SEEN ANOTHER)**  
 57. Westmoreland Prisms Handled Compote - Teal (scarce)  
 58. Westmoreland Prisms Handled Compote - Amy. (scarce)  
 59. Westmoreland Little Beads Ruffled Compote - Teal  
 60. **MINIATURE CHILDS PANELLED SINGLE CANDLE-STICK - MARI. (RARE AND VERY DESIRABLE; VERY NICE COLOR AND IRID.)**  
 61. **MINIATURE CHILDS PANELLED HANDLED CHAMBERSTICK - MARI. (EXTREMELY RARE AND VERY DESIRABLE; REALLY NEAT)**  
 62. **FOSTORIA AMERICA TOOTHPICK HOLDER - MARI. EXTREMELY RARE; SUPER IRID.)**  
 63. **TINY HOBNAIL SHOT GLASS (OR CHILDS TUMBLER) - MARI. (VERY NICE COLOR AND IRID.; VERY RARE)**  
 64. Heisey type Miniature Plain Jane Handled Flower Basket - Lt. Mari. (very scarce; pretty nice)  
 65. **EUROPEAN STAR AND FAN STEMMED CORDIAL - MARI. (EXTREMELY SCARCE AND NICE - A GREAT ITEM!)**  
 66. **JOAN OF ARC SMALL SMELLING SALTS BOTTLE WITH CAP - DK. MARI. (VERY RARE AND UNUSUAL - NICE IRID.)**  
 67. Tiny Thumbprint small Breakfast Sugar and Creamer - Lt. Mari. (selling choice; has a Detroit advert.)  
 68. 3" Odd Hourglass Bud Vase - Mari.  
 69. 3" Plain Vase with Enameled Flowers - Mari. (a little cutie; nice decor.)  
 70. Odd Oval Individual Salt Dip - Lt. Mari. (odd shape; 1st I've seen)  
 71. **5 - 6" EUROPEAN WESTERN THISTLE VASE - MARI. (RARE; HAVEN'T SEEN TOO MANY; UNUSUAL)**  
 72. Fenton Stretch Flared Salt - Pink (scarce color)  
 275 73. **VERY UNUSUAL RIBS AND PANELLED 2 HANDLED TOOTHPICK - MARI. (VERY RARE; 1ST I'VE SEEN - PRETTY NEAT!)**  
 74. Odd Flared Salt - Mari. (scarce)  
 75. Fenton Stretch Salt Dip - Celeste Blue  
 76. Westmoreland Little Beads Whimsey Flared Plate - Amy. (extremely scarce shape; nice color and irid.)  
 77. Pastel Hat Individual Salt Dip - Pink / Grey  
 78. **IMPERIAL COLONIAL 2 HANDLED TOOTHPICK, SIGNED WITH IRON CROSS - MARI. (VERY RARE; NOT MANY SEEN LATELY; VERY NICE)**  
 79. **HEISEY PANELLED INDIVIDUAL SALT DIP - CLEAR (SUPER SCARCE AND HAS SUPER IRID.)**  
 80. Odd European Ribbon Panelled small Candy Dish - Mari.  
 81. Odd Flute Individual Salt Dip - Clear  
 275 82. **MINIATURE WITCHES POT, SOUVENIR ZEELAND, MICH. - MARI. (REALLY NEAT MINIATURE; SUPER, SUPER SCARCE)**  
 83. 2" Miniature Violet Vase - Mari.  
 84. "Towers" Vase - Mari. (odd, rare item)  
 230 85. **MINIATURE COAL BUCKET WITH WIRE HANDLE, SOUVENIR REDWOOD FALLS, MINN. - LT. MARI. (ALWAYS POPULAR; GETTING TOUGH TO FIND)**  
 86. Westmoreland Estate Mug, Souvenir Watkins, Minn. - Mari. (scarce; enamelled advert.)  
 87. Odd Diamond Panelled Individual Salt Dip - Mari. (odd; scarce)  
 88. **VERY ODD LOGANBERRY STEMMED WINE GLASS - LT. MARI. (ONE OF THE VERY FEW I'VE EVER SEEN - NEAT)**  
 260 89. **EUROPEAN HEAVY VINE SHOT GLASS - MARI. (EXTREMELY SCARCE; VERY DESIRABLE)**  
 90. **DAISY AND BUTTON FTD. WITCHES POT SHAPED ASHTRAY - MARI. (EXTREMELY RARE VARIATION; GREAT COLOR)**  
 250 91. **EUROPEAN RISING SUN SMALL JUICE GLASS - DK. MARI. (VERY RARE SIZE; GREAT COLOR AND IRID.)**  
 92. Pastel Hat - Mari.  
 93. Basket Flower Hatpin - Pur. (extremely rare pattern)  
 94. N G & C Stippled Ruffled Bowl with Ribbed Exterior - Green (very scarce; nice color)  
 2500 95. **N PEACOCK AT THE URN LARGE ICE CREAM BOWL - GREEN (EXTREMELY RARE COLOR; SUPER RARE ITEM)**  
 750 96. **N PEACOCK AT THE URN INDIVIDUAL ICE CREAM BOWL - GREEN (VERY RARE; NICE COLOR AND IRID.)**  
 97. **N PEACOCKS RUFFLED BOWL WITH RIBBED EXTERIOR - GREEN (RARE AND VERY DESIRABLE; NICE COLOR)**  
 98. **N G & C VARIANT PLATE WITH OLD ROSE ADVERT. AND RIBBED EXTERIOR - GREEN (RARE AND HAS SUPER IRID. - NICE!)**  
 99. **IMPERIAL POPPY SHOW VASE - DK. MARI. (REALLY NICE COLOR; NICE IRID.)**  
 26,000 100. **19" N TREE TRUNK SWUNG FUNERAL VASE - ICE BLUE (WHAT CAN YOU SAY? I'VE WAITED A LONG TIME FOR THIS; FANTASTIC; ONE OF A KIND AND BEAUTIFUL)**  
 4600 101. **20" N TREE TRUNK SWUNG FUNERAL VASE - WHITE (SUPER FROSTY AND SUPER RARE)**  
 1400 102. **18 1/2" N TREE TRUNK SWUNG FUNERAL VASE - PUR. (RARE AND VERY DESIRABLE; SUPER, SUPER NICE)**  
 500 103. **N GRAPE ARBOR TANKARD WATER PITCHER - WHITE (RARE ITEM WITH FROSTY MULTI-COLORED IRID.)**



- 800 104. FENTON STAG AND HOLLY LARGE FTD. CHOP PLATE - MARI. (EXTREMELY DESIRABLE; FLAT AND SUPER COLOR)
- 1250 105. N HEART AND FLOWERS BOWL WITH PIE CRUST EDGE AND RIBBED EXTERIOR - ICE BLUE (VERY RARE; NICE DESIRABLE SHAPE; REAL NICE COLOR)
106. N THREE FRUITS STIPPLED BOWL WITH PIE CRUST EDGE AND RIBBED EXTERIOR - OLIVE GREEN (VERY RARE COLOR AND SHAPE; NICE COLOR)
107. DUGAN HEAVY WEB SQUARE BOWL - P. OPAL. (EXTREMELY RARE SHAPE; NOT MANY KNOWN)
- 950 108. N POPPY SHOW RUFFLED BOWL - ICE GREEN (EXTREMELY DESIRABLE; SUPER COLOR AND IRID.)
- 2750 109. N ROSE SHOW PLATE - EMERALD GREEN (EXTREMELY RARE AND DESIRABLE; FANTASTIC COLOR AND IRID.)
- 3900 110. N ROSE SHOW RUFFLED BOWL - ICE GREEN OPAL. (SUPER, SUPER RARE AND VERY DESIRABLE)
- 2300 111. N ROSE SHOW RUFFLED BOWL - SAPPHIRE BLUE (SUPER, SUPER RARE COLOR; 1ST WE'VE SOLD)
- 4000 112. N ROSE SHOW RUFFLED BOWL - HONEY AMBER (SUPER KEY COLOR; REALLY GREAT IRID.)
- 1400 113. N ROSE SHOW RUFFLED BOWL - LIME ICE GREEN (SUPER KEY COLOR; GREAT IRID.; VERY NICE; VERY SMALL CHECK IN BASE)
- 1150 114. N ROSE SHOW RUFFLED BOWL - ICE GREEN (SUPER RARE COLOR; NICE)
- 900 115. N ROSE SHOW RUFFLED BOWL - ICE BLUE (SUPER EXAMPLE; RARE AND NICE)
- 1100 116. N ROSE SHOW RUFFLED BOWL - AQUA WITH OPAL. (VERY RARE COLOR COMBINATION; LOOKS P. OPAL. ON TOP; NEAT)
- 1450 117. N ROSE SHOW RUFFLED BOWL - AQUA OPAL. (SUPER, SUPER PASTEL FINISH - A WONDERFUL ITEM)
- 850 118. N ROSE SHOW RUFFLED BOWL - LT. AMY. (ALMOST A LAVENDER TINT; NICE)
- 650 119. N ROSE SHOW RUFFLED BOWL - PUR. (SUPER COLOR AND IRID.; REALLY NICE)
- 2150 120. N ROSE SHOW RUFFLED BOWL - GREEN (SUPER COLOR AND IRID; SUPER DESIRABLE BLUE HIGHLIGHTS; NICE ITEM!)
- 1000 121. N ROSE SHOW RUFFLED BOWL - BLUE TO ELECTRIC (VERY SCARCE AND DESIRABLE; NICE ITEM)
- 600 122. N ROSE SHOW RUFFLED BOWL - BLUE (SUPER COLOR; A REALLY NICE ITEM)
- 500 123. N ROSE SHOW RUFFLED BOWL - DK. MARI. (SUPER COLOR AND IRID.; ONE OF THE BETTER ONES)
- 475 124. N ROSE SHOW RUFFLED BOWL - WHITE (SUPER IRID.; ONE OF THE BEST I'VE SEEN)
- 350 125. N ROSE SHOW VARIANT RUFFLED BOWL WITH RIBBED EXTERIOR - DK. MARI. (SUPER EXAMPLE; I HAVEN'T SEEN BETTER)
- 525 126. N ROSE SHOW VARIANT RUFFLED BOWL WITH RIBBED EXTERIOR - BLUE (RARE; VERY NICE COLOR AND IRID.; SMALL EPOXIED POINT)
- 900 127. N PEACOCK AT THE URN CHOP PLATE - PUR. (RARE AND VERY DESIRABLE; REALLY NICE COLOR)
- 1000 128. N EAGLE FURNITURE ADVERTISING PLATE WITH BASKETWEAVE EXTERIOR - AMY. (VERY RARE; NICE COLOR AND IRID.)

- 750 129. N DAVIDSONS CHOCOLATE 2 SIDED CARD TRAY - AMY. (RARE AND VERY DESIRABLE; NICE COLOR AND IRID.)
130. N WISHBONE 2 PC. EPERGNE - WHITE (EXTREMELY RARE; WHERE DO YA FIND THEM? NICE COLOR)
- 1000 131. N PEACOCK AT THE FOUNTAIN PUNCH BOWL AND BASE - PUR. (SUPER COLOR AND IRID.; REALLY NICE DETAIL)
- 3200 132. FENTON STRAWBERRY SCROLL 7 PC. WATER SET - BLUE (EXTREMELY RARE SET; PRETTY NICE COLOR)
- 550 133. FENTON PERSIAN MEDALLION CHOP PLATE - BLUE (RARE AND GETTING TOUGHER TO FIND)
134. DUGAN FOUR FLOWERS CHOP PLATE - P. OPAL. (SUPER SCARCE WITH NICE OPAL.)
- 2400 135. DUGAN PERSIAN GARDEN CHOP PLATE - WHITE (SUPER FLAT; SUPER IRID. AND VERY RARE)
136. Fenton Kittens Cup and Saucer - Dk. Mari. (scarce; super color)
137. Fenton Kittens Round Cereal Bowl - Dk. Mari. (very scarce; nice)
138. Fenton Kittens Ruffled Toothpick Holder - Dk. Mari. (very scarce; nice)
139. Fenton Kittens 6 Ruffled Bowl - Dk. Mari. (very scarce; nice)
- 100 140. Fenton Kittens 2 sided Banana Dish - Dk. Mari. (very scarce; nice)

#### START OF SECOND SESSION

- 110 141. Fenton Kittens 4 Ruffled Bowl - Dk. Mari. (very scarce; nice)
- 350 142. WESTMORELAND DAISY WREATH RUFFLED BOWL - BLUE OPAL. (SCARCE; ONE OF THE BETTER EXAMPLES)
- 150 143. N Peacock at the Urn Large Ice Cream Bowl - Custard / Nutmeg (scarce; pretty nice nutmeg)
- 400 144. N Three Fruits Plate with ~~Plain~~ Exterior - Green (super, super radium type finish) *Bw back*
- 325 145. N DRAPERY ROSE BOWL - AQUA OPAL. (SUPER, SUPER PASTEL OPAL. - NICE!)
- 675 146. FENTON STAG AND HOLLY 8 RUFFLED BALL FTD. BOWL - AQUA (SUPER DARK COLOR; VERY RARE ITEM)
- 650 147. FENTON 1910 DETROIT ELKS BPOE ICE CREAM SHAPED BOWL - AMY. (RARE AND VERY DESIRABLE; NICE COLOR)
- 100 148. M'burg Multi Fruits and Flowers Tumbler - Green (extremely rare; radium; small chip on base)
- 325 149. M'burg Peacock Deep Round Nut Bowl - Green (very rare; has straight up sides; no bee, no beads)
- 400 150. M'BURG POPPY STEMMED FLARED COMPOTE - MARI. (RADIUM AND VERY RARE; NICE COLOR AND IRID.)
- 625 151. M'BURG ROSILAND SMALL SIZED STEMMED RUFFLED COMPOTE - AMY. (VERY RARE AND EXTREMELY UNDERATED; SATINY AND NICE)
- 300 152. M'BURG ZIG ZAG SQUARE TIGHT CRIMPED EDGE BOWL - MARI. (SUPER, SUPER RADIUM FINISH; VERY SCARCE)
- 300 153. M'BURG PEACOCK AT THE URN LARGE ICE CREAM BOWL - AMY. (SATINY AND SCARCE; HAS NO BEE, NO BEADS)
- 90 154. M'burg Peacock at the Urn Individual Ice Cream Bowl - Amy. (satiny; scarce; has no bee, no beads)
- 910 155. M'BURG ROSES AND FRUIT 2 HANDLED STEMMED BON BON - MARI. (RADIUM AND VERY RARE; A TOUGHIE)



- 1450 Heavy Iris pitcher, white
- 575 156. M'BURG FLEUR DE LEI LARGE ICE CREAM SHAPED BOWL - AMY. (SUPER RADIUM; GREAT COLOR AND IRID.; NICE)
- 125 157. N G & C Large Ice Cream Bowl with Basketweave Exterior - Mari. (nice color; scarce)
- 175 158. N LEAF COLUMNS SWUNG VASE - ICE GREEN (VERY RARE COLOR; MAY HAVE A PINHEAD)
- 160x3 159. (3) N Peacock at the Urn Individual Ice Cream Bowls - Elec. Blue (scarce; really nice color; selling choice) 18
- 950 160. N ORIENTAL POPPY TANKARD WATER PITCHER - WHITE (SUPER RARE; NICE AND FROSTY; TERRIFIC IRID.)
- 135 161. N ORIENTAL POPPY TUMBLER - WHITE (VERY SCARCE; VERY NICE COLOR AND IRID.)
- 1900 162. N PEACOCK AT THE FOUNTAIN WATER PITCHER - GREEN (SUPER, SUPER RARE AND DESIRABLE; EXCELLENT COLOR) 39
- 700 163. N PEACOCKS PLATE WITH RIBBED EXTERIOR - LIME ICE GREEN (VERY SCARCE; ODD TINT - SUPER COLOR) 16 (46)
- 750 164. N PEACOCKS RUFFLED BOWL WITH RIBBED EXTERIOR - ICE GREEN (SUPER SCARCE; GREAT COLOR AND IRID.; HAS A POINT BENT BACK)
- 1050 165. FENTON DRAGON AND STRAWBERRY LARGE ICE CREAM SHAPED BOWL - AMY. (EXTREMELY RARE - ONLY 3 KNOWN; IRID. A BIT SPOTTY) (48)
- 300 166. FENTON PEACOCK AT THE URN 8 RUFFLED BOWL - AMY. (VERY RARE; A SUPER EXAMPLE WITH GREAT COLOR) (42) 63
- 250 167. FENTON PEACOCK AT THE URN 8 RUFFLED BOWL - AQUA (EXTREMELY RARE COLOR; NICE; HAS SMALL MANUF. CHECK ON MOLD LINE)
- 180 168. Fenton Rose Spray Jack in the Pulpit Stemmed Compote - Celeste Blue (super color; scarce) 62
- 160 169. 6" FENTON PINE CONE 12 SIDED PLATE - AMY. (SCARCE; NICE COLOR)
- 375 170. FENTON TWO ROW OPEN EDGE 2 SIDED HAT - RED (SUPER COLOR AND VERY NICE) (77)
- 500 171. FENTON TWO ROW OPEN EDGE JACK IN THE PULPIT BASKETWEAVE HAT - RED / AMBER (VERY SCARCE; ODD TINT; SUPER COLOR)
- 75 172. Fenton Lotus and Poinsettia ftd. Ruffled Sauce - Mari. / Vaseline (scarce color) 94
- 185 173. N Round Bushel Basket - Violet Blue (very rare tint; odd; has check at base of handle) 45
- 175 174. N NIPPON RUFFLED BOWL WITH BASKETWEAVE EXTERIOR - GREEN (VERY SCARCE; NICE SATINY FINISH)
- 1700 175. N THIN RIB MID SIZE SWUNG VASE - AMBER (A ONE OF A KIND BEAUTY THAT VASE COLLECTORS MUST HAVE - TRUE AMBER) (10)
- 625 176. N HEART AND FLOWERS STEMMED RUFFLED COMPOTE - BLUE (REALLY NICE COLOR; SUPER IRID.) (23)
- 1350 177. N THREE FRUITS STIPPLED PLATE WITH RIBBED EXTERIOR - ELEC. BLUE (SUPER, SUPER, SUPER!) 72
- 675 178. DUGAN MINIATURE TRI-CORNERED BEAUTY BUD VASE - PUR. (SUPER COLOR AND EXTREMELY DESIRABLE) (74)
- 365 179. 6 1/4" DUGAN GARDEN PATH VARIANT PLATE WITH SODA GOLD EXTERIOR - P. OPAL. (VERY RARE ITEM; HAS OPAL. ON EDGE) -
- 2200 180. 9" IMPERIAL GRAPE RUFFLED BOWL - ELEC. BLUE (ABSOLUTELY SUPER - PROBABLY THE FINEST RUFFLED BOWL IMPERIAL PRODUCED; ONE OF THE ONLY ELECTRIC BLUE EXAMPLES!!!) (57)
- 750 181. 8" M'BURG GRAPE LEAVES DEEP ROUND BOWL - AMY. (A BEAUTIFUL ITEM; SUPER RADIUM AND RARE SHAPE) (83)
- 425 182. M'BURG STRAWBERRY WREATH RUFFLED COMPOTE - GREEN (RADIUM AND RARE; SUPER COLOR AND IRID.) (94)
- 90 183. 6" M'burg Cosmos 8 Ruffled Bowl - Green (super radium rare shape) (74)
- 400 184. 7 3/4" FENTON VINTAGE GRAPE FLAT PLATE - AMY. (SCARCE; SUPER RADIUM FINISH) - 16
- 325 185. 7 3/4" FENTON VINTAGE GRAPE FLAT PLATE - GREEN (SCARCE; REALLY NICE IRID.) - 66
- 285 186. 7 1/2" Fenton Vintage Grape Flat Plate - Dk. Mari. (very scarce; nice color and irid.) (51)
- 215 187. 7 1/2" FENTON HORSEHEAD MEDALLION FLAT PLATE - DK. MARI. (SCARCE; NICE DETAIL AND IRID.) 16
- 4150 188. 7 1/2" FENTON PEACOCK AND DAHLIA FLAT PLATE - DK. MARI. (VERY RARE; REALLY NICE SATINY FINISH) (30)
- 400 189. 6 1/2" FENTON SAILBOATS FLAT PLATE - DK. MARI. (RARE; SUPER COLOR AND SUPER DETAIL) 97
- 400 190. 6 1/2" FENTON PEACOCK TAIL FLAT PLATE - DK. MARI. (VERY RARE SHAPE FOR THIS PATTERN; SATINY)
- 250 191. 6 1/2" FENTON CHERRY CHAIN PLATE - DK. MARI. (VERY SCARCE; NICE COLOR AND IRID.) 97 little flowers
- 400 192. 6 1/4" FENTON HONEYCOMB AND CLOVER EXTERIOR PATTERNED PLATE - MARI. (NICE COLOR; VERY RARE ITEM) 10
- 125 193. 6 1/2" Fenton Cherry Chain Plate - Dk. Mari. (very scarce; nice dark satiny finish) 90
- 295 194. 6 1/2" Fenton Pine Cone 12 Sided Flat Plate - Blue (scarce; nice color) 10
- 700 195. 7 1/2" FENTON PINE CONE FLAT PLATE - AMBER (SUPER RARE COLOR WITH ABSOLUTELY SUPER BLUE AND RED IRID. - WOW!) 10
- 85 196. 6 1/2" Fenton Pine Cone 12 Sided Plate - Mari. (nice color) 97
- 425 197. 6 1/2" FENTON PERSIAN MEDALLION FLAT PLATE - BLACK AMY. (SUPER RARE COLOR; CAN'T SEE THROUGH IT) 21
- 135 198. 6 1/2" Fenton Persian Medallion Flat Plate - Blue (very scarce; nice) 10
- 65 199. 6 1/2" Fenton Persian Medallion Flat Plate - Dk. Mari. (nice color)
- 400 200. 6 3/4" DUGAN PERSIAN GARDEN FLAT PLATE - PUR. (RARE COLOR; NICE IRID. TO GOLD AT EDGE) - 10
- 125 201. 6 1/2" DUGAN PERSIAN GARDEN FLAT PLATE - P. OPAL. (VERY RARE COLOR; VERY SLIGHT WEAR)
- 170 202. 7 1/2" Dugan Persian Garden Flat Plate - White (scarce; super irid.)
- 225 203. 6 1/2" Dugan Ski Star Crimped Edge Plate - P. Opal. (scarce; nice color and opal.) (42)
- 200 204. 6 1/2" Dugan Rays / Jewelled Heart Exterior Crimped Edge Plate - Pur. (scarce; nice irid.) (53)
- 205 205. 6 3/4" DUGAN FOUR FLOWERS FLAT PLATE WITH PLAIN EXTERIOR - P. OPAL. (VERY SCARCE; NICE OPAL. AND IRID.) 16
- 300 206. 6 1/2" DUGAN WISHBONE AND SPADES FLAT PLATE - P. OPAL. (SUPER COLOR AND IRID.; ENAMELLED - SOUVENIR OF CANTON, PA) - 10
- 300 207. 6 1/2" DUGAN WISHBONE AND SPADES FLAT PLATE - AMY. (SUPER COLOR AND IRID.; ALMOST BLACK AMY.)
- 150 208. 7" Dugan Grapevine Lattice Flat Plate - White (very scarce; super stretch irid.) 90



- 205 209. 7" Dugan Grapevine Lattice Flat Plate - Dk. Mari. (super satiny finish) 97
- 290 210. 7" DUGAN GRAPEVINE LATTICE FLAT PLATE - AMY. SUPER BLUE AND RED IRID.; ENAMELLED: SOUVENIR OF GETTYSBURG, PA 1863) 47
- 85 211. 7 1/2" Dugan Fishscale and Beads Flat Plate - Mari. (nice color and irid.) 13
- 100 212. 6 1/2" Imperial Grape Flat Plate - Pur. (super color; scarce) 85
- 90 213. 6 1/2" Imperial Grape Flat Plate - Olive Green (odd tint; scarce)
- 90 214. 6 1/2" Imperial Grape Flat Plate - Lime Green (super bright color)
- 55 215. 6 1/2" Imperial Grape Flat Plate - Helios Green (scarce)
- 60 216. 6 1/2" Imperial Grape Flat Plate - Dk. Mari. (nice color)
- 165 217. 6" Imperial Star and File Exterior Plate - Dk. Mari. (scarce; nice color) 97
- 210 218. 6" M'burg Peacock at the Urn Plate or Low Sauce - Amy. (very scarce; nice satiny finish)
- 150 219. 6" M'burg Peacock at the Urn Plate or Low Sauce - Amy. (scarce; has no bee)
- 300 220. 7 1/2" N FRUIT AND FLOWERS PLATE WITH BASKETWEAVE EXTERIOR - GREEN (RARE COLOR AND HAS NO WEAR; NICE) - 10
- 210 221. 7 1/2" N FRUIT AND FLOWERS PLATE WITH BASKETWEAVE EXTERIOR - DK. MARI. (SCARCE AND HAS NICE COLOR AND IRID.) 74
- 240 222. N Wild Strawberry Handgrip Plate with Basketweave Exterior - Green (scarce; nice color) 16
- 105 223. N Wild Strawberry Handgrip Plate with Basketweave Exterior - Mari. (scarce; nice color) 43
- 110 224. 6" N Peacock at the Urn Plate or Low Individual Ice Cream Bowl - Mari. (nice color; you decide)
- 145 225. 6" N PEACOCK AT THE URN PLATE OR LOW INDIVIDUAL ICE CREAM BOWL - ICE BLUE (VERY RARE COLOR IF IT IS - IT'S PRETTY CLOSE!!!)
- 160 226. N Peacock at the Urn Individual Ice Cream Bowl - Ice Blue (scarce; definitely different from #225)
- 425 227. N G & C INDIVIDUAL ICE CREAM BOWL WITH BASKETWEAVE EXTERIOR - ICE GREEN (VERY SCARCE AND REAL NICE COLOR) 62
- 550 228. N G & C WATER PITCHER - SMOKE (EXTREMELY RARE COLOR; NICE IRID. - SUPER!) 62
- 225 229. N Three Fruits Stippled Plate with Ribbed Exterior - Mari. (very scarce; nice color and irid.) 64
- 650 230. N EMBROIDERED MUMS RUFFLED BOWL WITH RIBBED EXTERIOR - ELEC. BLUE (HAS TO BE ONE OF THE VERY FINEST EXAMPLES) 88
- 250 231. N TORNADO SMALL SIZE VASE - MARI. (VERY SCARCE AND DESIRABLE; VERY NICE)
- 375 232. N POPPY SHOW RUFFLED BOWL - WHITE (SUPER SCARCE; VERY NICE IRID.) 45
- 3450 233. N PEACOCKS PLATE WITH RIBBED EXTERIOR - WHITE (SUPER EXAMPLE; FROSTY WITH NICE IRID.) 59
- 475 234. N PEACOCKS PLATE WITH RIBBED EXTERIOR - DK. MARI. (SCARCE; NICE DARK COLOR; NICE IRID.) 54
- 425 235. N DOUBLE LOOP CREAMER - BLUE (EXTREMELY RARE ITEM IN ANY COLOR - NEAT!) 62
- 345 236. N RASPBERRY MILK PITCHER - PUR. (SUPER COLOR AND SUPER IRID.; NICE!) -
- 435 237. N WIDE PANEL 4 LILY EPERGNE - BLUE OPAL 14 (NOT CARNIVAL; VERY SCARCE; NICE OPAL.)
- 275 238. DUGAN PASTEL SWAN - P. OPAL. (SUPER SCARCE; NICE IRID. AND PRETTY NICE IRID.) 16
- 65 239. Dugan Double Stem Rose Domed Ruffled Bowl - White (super irid.)
- 950 240. 1911 CAMPBELL - BEASLEY SPRING OPENING HANDGRIP PLATE - AMY. (RARE AND VERY DESIRABLE; NICE COLOR AND DETAIL) 35
- 750 241. UTAH LIQUOR DOUBLE HANDGRIP PLATE - AMY. (SUPER SCARCE; NICE SATINY FINISH; TOUGH!) 35
- 20 242. Pastel Swan - Ice Green (nice color)
- 125 243. 4" MINIATURE 5 PANELLED CANDLESTICK - FLASH MARI. (SMOKEY IRID.; RARE AND VERY DESIRABLE; NICE) 45 Daisy Wreath
- 175 244. Westmoreland Carolina Dogwood Ruffled Bowl - Blue Opal. (really nice color and opal.)
- 1000 245. M'BURG HANGING CHERRIES STEMMED COMPOTE - GREEN (SUPER COLOR; RARE AND DESIRABLE) 88
- 150 246. M'burg Nesting Swan Ruffled Bowl - Mari. (radium; really nice pastel blues and pinks)
- 260 247. 9" FENTON LEAF CHAIN PLATE - GREEN (NICE COLOR AND IRID.)
- 450 248. FENTON PEACOCK AT THE URN PLATE - BLUE (VERY SCARCE; NICE COLOR)
- 155 249. Fenton Butterfly and Berry Round ftd. Berry Bowl - Green (scarce color) 10
- 3500 250. ELEGANCE PLATE - ICE BLUE (SUPER UNUSUAL AND EXTREMELY RARE; REALLY NICE IRID.; ONLY A FEW KNOWN)
- 225 251. Fenton Bouquet 7 pc. Water Set - Mari. (scarce set; nice dark tumblers) 40
- 1400 252. 9 1/2 - 10" FENTON LITTLE FLOWERS LARGE RUFFLED BOWL - RED (EXTREMELY DESIRABLE; NICE IRID.; SOME AMBERINA) 74
- 1000 253. FENTON PERSIAN MEDALLION 2 HANDLED BON BON - RED (SUPER SCARCE; NICE ABOVE AVERAGE COLOR) 62
- 275 254. FENTON BLACKBERRY 2 ROW OPEN EDGE RUFFLED HAT - RED (SCARCE; NICE COLOR) 57
- 460 255. 7 1/2" FENTON ACORN RUFFLED BOWL - RED (REALLY NICE IRID.; SORTA BRICK RED COLOR) 63
- 150 256. IMPERIAL POINSETTIA MILK PITCHER - SMOKE (SUPER, SUPER IRID.; GREAT SCARCE ITEM)
- 195 257. IMPERIAL GRAPE WINE DECANTER AND STOPPER - PUR. (SCARCE; EXCELLENT COLOR AND IRID.) 51
- 625 258. N FRUIT AND FLOWERS 2 HANDLED BON BON - ICE GREEN (SUPER IRID.; VERY DESIRABLE) 44
- 150 259. N FRUIT AND FLOWERS 2 HANDLED BON BON - ELEC. BLUE (SUPER IRID. AND REALLY NICE) 63
- 550 260. N FRUIT AND FLOWERS 2 HANDLED BON BON - ICE BLUE (SUPER SCARCE; REALLY NICE COLOR AND IRID.) 16
- 400 261. N FRUIT AND FLOWERS BON BON - WHITE (VERY SCARCE; NICE FROSTY IRID.) 10
- 150 262. N Fruit and Flowers 2 Handled Bon Bon - Amy. (scarce; nice) 53
- 85 263. N Fruit and Flowers 2 Handled Bon Bon - Mari. (nice color) 34
- 95 264. 7" Dugan Fishscale and Beads Tri-cornered Crimped Edge Bowl - Pur. (nice with super irid.)
- 110 265. N Beaded Cable ftd. Rose Bowl - Green (very scarce; nice color and irid.) 15
- 65 266. N Beaded Cable ftd. Rose Bowl - Pur. (nice color)
- 200 267. Westmoreland Scales 6 Ruffled Bowl - Blue Opal. (very scarce; nice irid. and opal.) 68
- 100 268. Fenton Peacock and Grape Spatula ftd. Ruffled Bowl - Powder Blue / Mari. (scarce base color)
- 170 269. FENTON VINTAGE SMALL EPERGNE - BLUE (SCARCE; NICE COLOR)



- 90 270. Fenton Vintage Small Epergne - Amy. (scarce)  
140 271. Fenton Vintage Small Epergne - Mari. (scarce) 20  
190 272. DUGAN HONEYCOMB ROSE BOWL - P. OPAL. (VERY SCARCE; NICE OPAL. AND IRID.) 41  
375 273. M'BURG TROUT AND FLY 3 IN 1 EDGE BOWL - MARI. (SATINY AND VERY SCARCE) 73  
1700 274. N POPPY SHOW RUFFLED BOWL - ELEC. BLUE (REALLY SUPER; VERY DESIRABLE WITH NICE COLOR) 10  
130 275. N Heart and Flowers Stemmed Ruffled Compote - White (scarce; nice color)  
1200 276. N Heart and Flowers Plate with Ribbed Exterior - Green (scarce; has chip off one point) 10  
900 277. N HEART AND FLOWERS PLATE WITH RIBBED EXTERIOR - PUR. (RARE; VERY NICE COLOR AND IRID.) 10  
250 278. N HEART AND FLOWERS PLATE WITH RIBBED EXTERIOR - MARI. (MANUF. OPEN BUBBLE; SCARCE AND NICE) 64  
NS 279. N HEART AND FLOWERS RUFFLED BOWL WITH PIE CRUST EDGE AND RIBBED EXTERIOR - WHITE (SUPER RARE SHAPE FOR THIS COLOR; NICE)  
290 280. N HEART AND FLOWERS RUFFLED BOWL WITH RIBBED EXTERIOR - ICE BLUE (SCARCE; NICE COLOR) 22  
775 281. N HEART AND FLOWERS RUFFLED BOWL WITH RIBBED EXTERIOR - ICE GREEN (VERY SCARCE AND DESIRABLE; NICE IRID.)  
530 282. N HEART AND FLOWERS RUFFLED BOWL WITH RIBBED EXTERIOR - WHITE (SCARCE; NICE AND FROSTY) 10  
450 283. FENTON ORANGE TREE LOVING CUP - AMY. (VERY RARE COLOR FOR THIS ITEM)  
550 284. FENTON ORANGE TREE LOVING CUP - GREEN (VERY RARE COLOR FOR THIS ITEM) 10  
300 285. FENTON ORANGE TREE LOVING CUP - BLUE (SCARCE; NICE COLOR) 16  
195 286. Fenton Orange Tree Loving Cup - Mari. (scarce; nice irid.) 28  
\_\_\_\_ 287. Fenton Captive Rose Stemmed Compote - White (scarce color and irid.; nice)  
\_\_\_\_ 288. Fenton Lions Ruffled Bowl - Blue (very scarce and getting tough to find)  
\_\_\_\_ 289. Fenton Lions Ruffled Bowl - Mari. (scarce; nice detail)  
\_\_\_\_ 290. Fenton Horsehead Medallion ftd. Rose Bowl - Mari. (nice color; scarce)  
\_\_\_\_ 291. Fenton Horsehead Medallion ftd. Low Ruffled Bowl - Green (super color and irid.)  
\_\_\_\_ 292. 10" N TREE TRUNK STANDARD SWUNG VASE - ICE GREEN (VERY SCARCE; NICE IRID.)  
\_\_\_\_ 293. 11" N DIAMOND POINT STANDARD SWUNG VASE - ICE BLUE (SCARCE; NICE COLOR AND IRID.)  
\_\_\_\_ 294. 9 1/2" FENTON RUSTIC SWUNG VASE - LIME GREEN OPAL. (SUPER RARE AND ONE OF THE MORE DESIRABLE VASES)  
1350 295. 10 1/2" DUGAN WISHBONE AND SPADES CHOP PLATE - PUR. (SUPER SCARCE WITH OUTSTANDING IRID. - NICE)  
\_\_\_\_ 296. (2) 6 1/2" DUGAN WISHBONE AND SPADES SMALL PLATES - PUR. (SOLD SEPARATELY; SUPER IRID.)  
\_\_\_\_ 297. European Covered Hen - Blue (scarce)  
\_\_\_\_ 298. European Covered Hen - Mari.  
\_\_\_\_ 299. Be Wise Owl Bank - Lt. Mari.  
\_\_\_\_ 300. N NAUTILUS CREAMER - P. OPAL. (REALLY NICE COLOR AND OPAL.)  
\_\_\_\_ 301. 9" Dugan Fanciful Low Ice Cream Shaped Bowl - White (really nice irid.)  
\_\_\_\_ 302. Dugan Fanciful Low Ruffled Bowl - Amy. (flake on edge)  
\_\_\_\_ 303. N EMBROIDERED MUMS RUFFLED BOWL WITH RIBBED EXTERIOR - PUR. (SCARCE; A BEAUTIFUL EXAMPLE)  
\_\_\_\_ 304. FENTON KITTENS TOOTHPICK HOLDER - BLUE (RARE AND VERY DESIRABLE - NICE)  
\_\_\_\_ 305. FENTON KITTENS 2 SIDED BANANA DISH - BLUE (RARE AND VERY DESIRABLE; NICE)  
1300 306. FENTON DRAGON AND LOTUS 8 RUFFLED BOWL - AMY. OPAL. (SUPER RARE COLOR; NICE OPAL. ON THE EDGE)  
\_\_\_\_ 307. Fenton Dragon and Lotus Ice Cream Shaped Bowl - Blue (nice irid.)  
\_\_\_\_ 308. Fenton Dragon and Lotus Ice Cream Shaped Bowl - Amber (rare base color)  
\_\_\_\_ 309. Fenton Dragon and Lotus Ruffled Bowl - Green (nice color and irid.)  
\_\_\_\_ 310. DUGAN AMARYLIS TRI-CORNERED COMPOTE - PUR. (SATINY AND VERY DESIRABLE)  
\_\_\_\_ 311. N ROSE SHOW PLATE - BLUE (RARE AND VERY DESIRABLE; PRETTY NICE HIGHLIGHTS)  
\_\_\_\_ 312. N ROSE SHOW FLAT PLATE - MARI. (SUPER, SUPER EXAMPLE AND VERY FLAT)  
\_\_\_\_ 313. 11" FENTON STAG AND HOLLY FTD. ICE CREAM SHAPED BOWL - ELEC. BLUE (SUPER, SUPER COLOR AND VERY DESIRABLE; NICE)  
\_\_\_\_ 314. Dugan Mary Ann Vase - Amy. (scarce; nice color)  
\_\_\_\_ 315. Dugan Mary Ann Vase - Mari.  
\_\_\_\_ 316. (4) Imperial Diamond and Sunburst Wines - Pur. (selling choice; nice color)  
\_\_\_\_ 317. Fenton Blackberry 2 Row Open Edge Ruffled Hat - Amy. (scarce color)  
\_\_\_\_ 318. Fenton 2 Row Open Edge Ruffled Hat - Lt. Mari.  
\_\_\_\_ 319. Fenton 2 Row Open Edge Ruffled Hat - Aqua (scarce)  
\_\_\_\_ 320. Fenton 2 Row Open Edge Ruffled Hat - Forest Green (bright color; unusual)  
\_\_\_\_ 321. Fenton 2 Row Open Edge Ruffled Hat - Powder Blue / Mari.  
\_\_\_\_ 322. Fenton 2 Row Open Edge Jack in the Pulpit Hat - Mari.  
\_\_\_\_ 323. Fenton 2 Row Open Edge Jack in the Pulpit Hat - Blue  
\_\_\_\_ 324. Fenton 2 Row Open Edge Hat - Mari.  
\_\_\_\_ 325. Fenton 2 Row Open Edge Hat - Black (rare and very tough to find)  
\_\_\_\_ 326. Fenton Large Size 2 Row Open Edge 4 Ruffled Square Bowl - White (scarce; nice and frosty)  
\_\_\_\_ 327. 6 1/2" Fenton Ice Cream - White (scarce; nice and frosty)  
\_\_\_\_ 328. Fenton Vintage Grape Stemmed Ruffled Compote - Blue  
\_\_\_\_ 329. Fenton Iris Buttermilk Goblet - Green  
\_\_\_\_ 330. Fenton Blackberry Spray Ruffled Hat - Green  
\_\_\_\_ 331. Fenton Captive Rose Ice Cream Shaped Bowl - Amy.  
\_\_\_\_ 332. IMPERIAL GRAPE 8 PC. WINE SET - PUR. (GREAT COLOR; OUTSTANDING SET)  
\_\_\_\_ 333. Imperial Grape 8 pc. Wine Set - Helios Green (scarce)  
\_\_\_\_ 334. Imperial Diamond and Sunburst 7 pc. Wine Set - Mari. (very scarce set)  
\_\_\_\_ 335. Dugan Peacock at the Fountain Water Pitcher - Blue (nice average color)  
\_\_\_\_ 336. N Good Luck Bowl with Pie Crust Edge and Ribbed Exterior - Amy. (goldish; very scarce)  
\_\_\_\_ 337. N GOOD LUCK BOWL WITH PIE CRUST EDGE AND RIBBED EXTERIOR - ELEC. BLUE (SUPER BLUE FINISH - REALLY NICE)  
\_\_\_\_ 338. N Stippled Good Luck Bowl with Pie Crust Edge and Ribbed Exterior - Blue (very scarce; nice color and irid.)  
\_\_\_\_ 339. N Good Luck Ruffled Bowl with Ribbed Exterior - Blue (gold / silver irid.)  
\_\_\_\_ 340. N Good Luck Stippled Ruffled Bowl with Ribbed Exterior - Mari. (scarce)



341. N Good Luck Stippled Ruffled Bowl with Ribbed Exterior - Odd Blue (teal like; small flake)  
 342. N Good Luck Ruffled Bowl with Basketweave Exterior - Green (scarce; nice color)  
 343. N Good Luck Ruffled Bowl with Basketweave Exterior - Pur. (scarce; nice color)  
 344. 8" Imperial Heavy Grape Plate - Pur. (super irid.)  
 345. 8" Imperial Heavy Grape Plate - Helios Green  
 346. 8" Imperial Heavy Grape Plate - Mari. (nice color)  
 347. **N POPPY RELISH TRAY - GREEN (RARE COLOR)**  
 348. N Poppy Relish Tray - Mari.  
 349. **N POPPY RELISH TRAY - ICE BLUE (VERY RARE COLOR; NICE IRID.)**  
 350. **N POPPY RELISH TRAY - AMY. (VERY RARE COLOR FOR THIS PATTERN)**  
 351. 7 1/2" N Fruit and Flowers Ruffled Bowl with Basketweave Exterior - Elec. Blue (super scarce and a beaut)  
 352. 10" N Diamond Point Swung Vase - Green  
 353. 11" N Diamond Point Swung Vase - Blue Opal. (not Carnival)  
 354. N Double Loop Chalice (or Open Sugar) - Blue  
 355. 10" Fenton Rustic Swung Vase - White  
 356. 10" N Thin Rib Swung Vase - White  
 357. N Fine Cut and Roses ftd. Rose Bowl - Amy.  
 358. **N IVY TOWN PUMP - PUR. (SUPER RARE ITEM; WITH REALLY NICE COLOR AND IRID.)**  
 359. **N LOVELY FLARED FTD. BOWL WITH L & B EXTERIOR - PUR. (EXTREMELY RARE ITEM, ESPECIALLY IN THIS COLOR)**  
 360. Imperial Acanthus Deep Round Bowl - Pur. (super color and irid.)  
 361. U.S. Glass 1909 Louisville Shriners Champagne - Clear (scarce)  
 362. U.S. Glass 1910 New Orleans Shriners Champagne - Clear (scarce)  
 363. U.S. Glass 1911 Rochester Shriners Champagne - Clear (scarce)  
 364. U.S. Glass 1908 St. Paul Shriners Champagne - Ruby Flash (scarce)  
 365. **IMPERIAL NU ART CHRYSANTHEMUM CHOP PLATE, SIGNED - SMOKE (SUPER ITEM; GREAT COLOR AND IRID.)**  
 366. **IMPERIAL NU ART CHRYSANTHEMUM CHOP PLATE, SIGNED - HONEY AMBER (GREAT COLOR AND IRID.; VERY RARE)**  
 367. **IMPERIAL NU ART CHRYSANTHEMUM CHOP PLATE, SIGNED - MARI. (SUPER COLOR AND VERY DESIRABLE)**  
 368. **IMPERIAL NU ART CHRYSANTHEMUM CHOP PLATE, NOT SIGNED - WHITE (SUPER RARE AND VERY DESIRABLE; NICE)**  
 369. **IMPERIAL NU ART HOMESTEAD CHOP PLATE, SIGNED - PUR. (SUPER COLOR AND VERY DESIRABLE; NICE)**  
 370. **FENTON CONCORD GRAPE FLAT PLATE - AMY. (SCARCE AND VERY DESIRABLE; PRETTY NICE IRID.)**  
 371. **FENTON MIKADO LARGE DEEP ROUND STEMMED COMPOTE - BLUE (VERY SCARCE; PRETTY NICE ITEM)**  
 372. Fenton Mikado Large Ruffled Stemmed Compote - Mari. (scarce)  
 373. **FENTON CAPTIVE ROSE FLAT PLATE - AMY (VERY SCARCE AND DESIRABLE; REALLY NICE)**  
 374. Fenton Ribbon Tie Low Ruffled Bowl - Blue  
 375. **9" FENTON VINTAGE GRAPE RUFFLED BOWL - RED (VERY RARE ITEM; GREAT RED COLOR; IRID. A BIT DARK)**  
 376. N G & C 4 pc. Table Set - Dk. Mari. (nice color; all items sold separately)  
 377. **IMPERIAL WAFFLE BLOCK WATER PITCHER - MARI. (EXTREMELY RARE ITEM; NICE COLOR)**  
 378. **DUGAN VINTAGE BANDED PEDESTALED WATER PITCHER - MARI. (VERY RARE ITEM; NOT TOO MANY KNOWN)**  
 379. Jenkins Mayflower Water Pitcher - Mari. (scarce)  
 380. **EUROPEAN PANELLED THISTLE DIAMOND SHAPED WATER PITCHER - BLUE (VERY RARE AND UNUSUAL; PRETTY NICE)**  
 381. Fenton Magnolia and Drape Bulbous Enamelled Water Pitcher - Mari. (scarce; nice color)  
 382. Dugan Floral and Grape Bulbous Water Pitcher - Mari.  
 383. Hammered Bell Shade - White (scarce)  
 384. Imperial Stretch Console Bowl - Red (really nice color)  
 385. **N HEART AND FLOWERS FLAT PLATE WITH RIBBED EXTERIOR - PUR. (RARE AND VERY DESIRABLE; GREAT PATTERN; NICE COLOR)**  
 386. **DUGAN FANCIFUL PLATE - BLUE (SATINY FINISH; SCARCE)**  
 387. N Acorn Burr Tumbler - Pur. (super color and irid.)  
 388. M'burg Marilyn Tumbler - amy. (very scarce; nice color)  
 389. (2) European Coil Tumblers - Mari. (scarce; selling choice)  
 390. Fenton 2 Row Open Edge Hat with Brand Advertising - Mari.  
 391. Westmoreland Louisa ftd. Bowl - Teal  
 392. Tall Vase - Amy. (damaged)  
 393. Tall Plain Ruffled Compote - Mari.  
 394. Fenton Garland ftd. Rose Bowl - Blue (goldish)  
 395. **N GOOD LUCK RUFFLED BOWL WITH RIBBED EXTERIOR - BLUE (SCARCE; HAS ABOVE AVERAGE IRID.)**  
 396. 8" N Tree Trunk Swung Vase - Green  
 397. 10" N Tree Trunk Swung Vase - Mari. (fair)  
 398. 9 - 10" N Tree Trunk Swung Vase - Black Amy. (fair)  
 399. Fenton Long Thumbprint Swung Vase - Amy.  
 400. Dugan Six Petals Ruffled Bowl - Pur. (silvery)  
 401. Dugan Wishbone and Spades Ruffled Sauce - Amy. (nice irid.)  
 402. Fenton Vintage Grape Ruffled Bowl - Green

#### EXTRA ITEMS

- 1X Fenton Kittens Cup - Dk. Mari.  
 2X 6" Dugan Persian Garden Plate - Dk. Mari. (super)  
 3X 6" Dugan Persian Garden Plate - White  
 4X 6" Fenton Pine Cone Plate - Mari.  
 5X 6" Fenton Pine Cone Plate - Amy.  
 6X **DUGAN HEAVY IRIS WATER PITCHER - WHITE (EXTREMELY RARE; SUPER IRID.)**



