

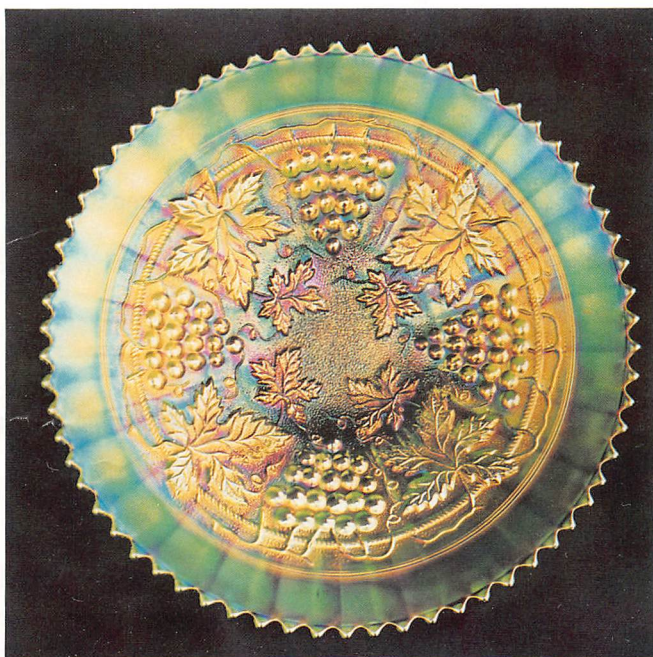


AUCTION SERVICE
Carnival Glass Auction
Friday & Saturday,
December 10 & 11, 1993

6:30 pm, Friday, Lots 1 - 200, 4:00 pm preview
 9:30 am, Saturday, Lots 201 - end, 8:00 am preview

at the **Holiday Inn I-70 East**
 6990 E. 21st Street, Indianapolis, IN 46219
 (I-70 at Shadeland Ave. Exit 89)

(317) 359-5341



Burns Auction Service

Tom Burns
 109 E. Steuben St.
 Bath, New York 14810
 (607) 776-7942

Bill Richards
 44 Water St.
 Poland, Ohio 44514
 (216) 757-2001

Bill Richards III
 524 Poland Ave.
 Struthers, Ohio 44471
 (216) 755-2620

Selling at auction the personal collection of Don and Kay Kemp from Salisbury, Pa. Kay has had an antique shop in Somerset, Pa. for years and she's always had a large inventory of Carnival Glass for sale - except one thing - she kept a large number of items for their own collection.

I'll tell ya what, they had pretty good taste and now it's time to spread it around the country and we at Burns Auction Service are pleased to bring it to ya.

The Holiday Inn - I-70 East on 21st Street off Shadeland Ave. will host event. We have a block of 40 rooms available - call the motel direct at (317) 359-5341 to make your reservations and be sure to mention **Burns Auction Service & Group #1659**.

This should be a good one to end the 1993 season with so be sure to see us there. Take care and have a safe Holiday Season!

Mail bids due by Thursday, December 9, 1993.

Mail Bids honored under the following conditions:

1. No deposit required. Bidders will take full responsibility to honor any and all bids we execute for them. Payment in full plus postage and handling required after notification and before we ship any item to them.
2. **Items are bid on in perfect condition with average or above average iridescence OR as listed in the brochures. Bids will not be carried out when damage on an item has been found during the auction.**
3. Successful bidders will be notified by collect call from the auctioneer (**so be sure to include phone number**).
4. Phone inquiries about the glass or any other questions are welcome.
5. All non-successful will receive a result summary in the mail. Results of all bids will be provided.
6. If you have some other person at the auction bidding for you, they must pay for the item before taking it.
7. Mail bids due by Thursday, December 9, 1993

- | | | | |
|------------------|---|-------------------|--|
| <u>5</u> 1. | Newer Imperial Pastel Swan - Amber (not Carnival; from the 60's) | <u>75</u> 22. | Odd Novelty Mug "Souvenir of Akron, Ohio" - Mari. |
| <u>NS</u> 2. | Pastel Swan - Crystal (not carnival; scarce) | <u>7 1/2</u> 23. | LBJ Hat Ashtray - Mari. |
| <u>2 x 5</u> 3. | (2) Pastel Swans - Celeste Blue (1 has small chip; selling choice; scarce) | <u>75</u> 24. | Fenton Waterlily and Cattail Novelty Toothpick Holder - Mari. (scarce) |
| <u>5</u> 4. | Pastel Swan - Pink (small chip one wing) | <u>75</u> 25. | 4" TALL NOVELTY CREAMER WITH ETCHED FLOWER AND LEAVES AND APPLIED HANDLE - MARI. (VERY UNUSUAL; 1ST I'VE SEEN - A GREAT MINIATURE ITEM) |
| <u>10</u> 5. | Pastel Swan - Odd Blue Opal. (not carnival; scarce) | <u>190</u> 26. | Imperial Little Barrel - Green (very scarce) |
| <u>2 x 5</u> 6. | (2) Pastel Swans - Ice Green | <u>35</u> 27. | Imperial Little Barrel - Dk. Mari. (scarce; nice dark color) |
| <u>5</u> 7. | Depression Era Covered Duck Butter Dish - Lt. Mari. | <u>15</u> 28. | Odd Figural Sitting Scottie Dog Miniature - Pur. (really unusual; 1st I've seen; probably newer) |
| <u>7 1/2</u> 8. | Depression Era Scottie Covered Powder Jar - Lt. Mari. | <u>80</u> 29. | Odd Figural Rearing Horse Miniature - Pur. (also very different; 1st I've seen; probably newer) |
| <u>15</u> 9. | Depression Era Bambi Covered Powder Jar - Lt. Mari. | <u>70 x 2</u> 30. | (2) European Heavy Vine Perfume Bottles with Stopper - Dk. Mari. (super color; selling choice) |
| <u>55</u> 10. | Depression Era Poodle Covered Powder Jar with Original Contents - Lt. Mari. | <u>15</u> 31. | European Heavy Vine Cologne Bottle and Stopper - Dk. Mari. (very scarce; super color) |
| <u>25</u> 11. | Be Wise Owl Bank - Mari. (scarce) | <u>160</u> 32. | European Heavy Vine Ring Tree - Dk. Mari. (very unusual; super color and very desirable) |
| <u>7 1/2</u> 12. | Small Size Pig Bank - "Save with Marathon, The Ohio Oil Company" - Mari. | <u>50</u> 33. | European Heavy Vine Oblong Pin Tray - Dk. Mari. (super scarce; super color and very desirable) |
| <u>5</u> 13. | (2) Depression Era Liberty Bell Banks - Mari. (one has enamelled "Cohen's - Quality Furniture since 1895") | <u>12 1/2</u> 34. | (2) Odd Plain Perfume Bottles with Stoppers and Dabbers - Lt. Mari. (very unusual; 1 has small chip on edge; selling choice) |
| <u>15</u> 14. | Depression Era Lucky Bank Barrel with Enamelled Dec. Advertising - Lt. Mari. ("Save at Reuben's") | <u>5*</u> | |
| <u>450</u> 15. | FENTON KITTENS ODD RUFFLED TOOTHPICK HOLDER - BLUE (RARE AND DESIRABLE; VERY ODD SHAPE) | <u>60</u> 35. | Imperial Flute Toothpick Holder - Pur. (nice color) |
| <u>105</u> 16. | Fenton Kittens Ruffled Toothpick Holder - Mari. (nice; desirable) | <u>35</u> 36. | Imperial Flute Toothpick Holder - Green (scarce) |
| <u>200</u> 17. | Fenton Kittens Cup and Saucer - Lt. Mari. (nice detail; light irid.) | <u>25</u> 37. | Imperial Flute Toothpick Holder - Dk. Mari. (scarce) |
| <u>105</u> 18. | Fenton Kittens 2 sided Banana Dish - Mari. (nice detail; scarce) | <u>25</u> 38. | Dugan Tree of Life Miniature Flower Basket - Dk. Mari. |
| <u>195</u> 19. | Robert Hansen Tree Stump Toothpick Holder - Red (super color; very desirable) | <u>17 1/2</u> 39. | Pair Depression Era Salt and Pepper Shakers - Lt. Mari. |
| <u>500</u> 20. | 4 1/8" X 1 1/4" TALL WESTMORELAND INTAGLIO FLOWER FLARED DEEP PLATE - P. OPAL. (EXTREMELY RARE MINIATURE ITEM; GREAT COLOR AND VERY DESIRABLE; ONLY A FEW KNOWN - THIS IS THE BEST ONE!) | <u>70</u> 40. | Unlisted Diamond Point and File Creamer - Mari. (unusual; never seen the pattern; probably McKee) |
| <u>70</u> 21. | Westmoreland Estate Mug - Mari. (nice color and detail) | <u>15</u> 41. | Sowerby Pineapple Creamer - Mari. |
| | | <u>20</u> 42. | Sowerby Pineapple Rose Bowl - Mari. (scarce) |
| | | <u>35 x 6</u> 43. | (6) "Moonprint" Stemmed Wine Glasses - Mari. (unusual; selling so much each for set) |
| | | <u>5</u> 44. | Concave Diamond Candle Wax Holder - Mari. |
| | | <u>60</u> 45. | Fenton Miniature Blackberry Compote - Blue (really nice; one of the better ones I've seen) |

- 50 46. Tiny Thumbprint Large Toothpick Holder - Lt. Mari. (stenciled "Souvenir The Dalles, Ore.")
- 10 47. Odd Squatty Perfume Atomizer with Metal Flower Top - Dk. Mari. (different)
- 40 48. Big Butterfly Hatpin - Dark
- 65 49. Triplet Hatpin (3 Bees) - Dark
- 45 50. Golden Wedding 1/10 pint Nip Bottle with Screw Top - Lt. Mari. (has all original labels)
- X 51. N Wild Rose ftd. Deep Round Candy Dish - Green
- 40 52. N Grape Leaves Low Ruffled Bowl - Green
- 40 53. N Grape Leaves Ruffled Bowl - Green
- 27 54. N Grape Leaves Ruffled Bowl - Mari.
- 1600 55. N HEART AND FLOWERS BOWL WITH PIE CRUST EDGE AND RIBBED EXTERIOR - ELEC. BLUE (ABSOLUTELY SUPER COLOR AND IRID.; EXTREMELY DESIRABLE)
- 3400 55A N HEART AND FLOWERS PLATE WITH RIBBED EXTERIOR - LIME ICE GREEN (EXTREMELY RARE; SUPER IRID. AND BASE COLOR; HAS STRAW MARK ON FACE)
- 500 56. N HEART AND FLOWERS STEMMED RUFFLED COMPOTE - ELEC. BLUE (RARE AND VERY DESIRABLE; BLUE HIGHLIGHTS WITH A BAND OF GOLD)
- 1950 56A N HEART AND FLOWERS STEMMED RUFFLED COMPOTE - GREEN (RARE AND VERY DESIRABLE; LIGHT COLOR WITH REALLY NICE MULTI-COLORED IRID.; A SUPER EXAMPLE!)
- 200 57B N HEART AND FLOWERS STEMMED RUFFLED COMPOTE - DK. MARI. (SUPER COLOR AND IRID.; REALLY NICE)
- 600 57. N EMBROIDERED MUMS RUFFLED BOWL WITH RIBBED EXTERIOR - ICE BLUE (RARE; LIGHT GOLD HIGHLIGHTS WITH A TOUCH OF PINK; NICE)
- 225 58. N Embroidered Mums Ruffled Bowl with Ribbed Exterior - Dk. Amy. (very scarce; multi-colored irid. in the center - silvery gold on outer edge)
- 50 59. N Star of David and Bows domed Ruffled Bowl - Amy.
- 850 60. N PEACOCKS BOWL WITH PIE CRUST EDGE AND PLAIN EXTERIOR - WHITE (VERY RARE AND EXTREMELY DESIRABLE; NICE AND FROSTY WITH EXCELLENT HIGHLIGHTS)
- 350 61. N PEACOCKS BOWL WITH PIE CRUST EDGE AND RIBBED EXTERIOR - PUR. (EXCELLENT COLOR AND IRID.; SUPER BLUE HIGHLIGHTS)
- 225 62. N Peacocks Ruffled Bowl with Ribbed Exterior - Blue Opal. (not carnival; excellent opal.; very desirable)
- 1900 63. N PEACOCK AT THE FOUNTAIN STEMMED RUFFLED COMPOTE - ICE BLUE (VERY RARE AND DESIRABLE; GOLD HIGHLIGHTS WITH A TOUCH OF PINK)
- 160 64. N Peacock at the Fountain Individual Berry Bowl - Ice Blue (very scarce; nice)
- 325 65. N PEACOCK AT THE URN LARGE ICE CREAM BOWL - AMY. (VERY DESIRABLE ITEM WITH SUPER BLUE AND GOLD HIGHLIGHTS)
- 200 66. N Singing Bird Mug with Stenciled Advertising - Pur. (very desirable; "Amazon Hotel and Cafe, 38 Fairfield Ave. Bridgeport")
- 60 67. N Singing Bird Mug - Amy.
- WS 68. N Singing Bird Mug - Dk. Mari. (lots of bubbles)
- 250 peacocks plate m.
- 60 69. N Round Bushel Basket - Pur. (scarce; gold / silver finish)
- 350 70. N CORN VASE WITH STALK BASE - ICE GREEN / MARI. (VERY SCARCE; SUPER COLOR AND IRID.; NICE)
- 60 71. 11" N THIN RIB STANDARD SWUNG VASE - VASE-LINE (SUPER, SUPER COLOR WITH EXCEPTIONAL IRID.; HAS TINY CHIP ON INSIDE EDGE)
- 25 72. 10 1/2" N Thin Rib Standard Swung Vase - Green
- 20 73. 11 1/2" N Tree Trunk Standard Swung Vase - Pur. (nice color)
- 70 74. 11 1/4" N Pillar Ribbed Swung Vase - Aqua Opal. (very scarce; chip on one toe)
- 500 75. N WISHBONE FTD. RUFFLED BOWL WITH RUFFLES AND RINGS EXTERIOR - ICE BLUE (RARE AND EXTREMELY DESIRABLE; SUPER COLOR AND REALLY NICE)
- 70 76. N Wishbone ftd. Ruffled Bowl with Ruffles and Rings Exterior - Amy.
- 55 77. N Wishbone ftd. Ruffled Bowl with Ruffles and Rings Exterior - Dk. Mari.
- 125 78. N Beaded Cable ftd. Rose Bowl - Blue (scarce and nice)
- 80 79. N Beaded Cable ftd. Rose Bowl - Dk. Mari.
- 1100 80. N GOOD LUCK RUFFLED BOWL WITH RIBBED EXTERIOR - AQUA / TEAL (VERY RARE AND EXTREMELY DESIRABLE; ONE OF THE BEST I'VE SEEN)
- 275 81. N GOOD LUCK RUFFLED BOWL WITH RIBBED EXTERIOR - DK. PUR. (SUPER, SUPER ELECTRIC IRID.; GREAT COLOR)
- 100 82. N Good Luck Ruffled Bowl with Basketweave Exterior - Pur. (really nice color and irid.; may have a pinhead or two)
- 145 83. N Good Luck Ruffled Bowl with Ribbed Exterior - Mari. (scarce; nice irid.)
- 310 84. N Good Luck Stippled Ruffled Bowl with Ribbed Exterior - Renninger Blue (rare tint and very desirable; has tiny chip off back of one point)
- 1050 85. N ACORN BURR 7 PC. WATER SET - PUR. (A REALLY SUPER SET; HAS TO ONE OF THE BEST I'VE SEEN)
- 35 86. (2) N Oriental Poppy Tumblers - Mari. (sold per each)
- 65 87. N Daisy and Plume ftd. Rose Bowl with Berry Interior - Dk. Pur (really nice color; pretty good feet; slight roughness on one)
- 85 88. N Daisy and Plume Stemmed Compote with Fern Interior - Green (very scarce; nice irid.)
- 85 89. N Graceful Ruffled Vase - Green (scarce)
- 425 90. N LOVELY FTD. FLARED BOWL WITH LEAF AND BEADS EXTERIOR - GREEN (VERY RARE PATTERN; REALLY NICE COLOR - A BIT SILVER TO THE EDGE)
- 190 91. N Nippon Ruffled Bowl with Basketweave Exterior - Green (scarce; nice satiny finish)
- 75 92. N Fine Cut and Roses ftd. Ruffled Candy Dish - Green
- 100 93. N Three Fruits ftd. Ruffled Bowl with Meander Exterior - Dk. Pur. (super dark - super irid.; rough spot on one foot)
- 35 94. N Three Fruits Ruffled Bowl with Basketweave Exterior - Pur. (nice color; tiny bit of roughness on one point)
- 650 95. N GRAPE ARBOR 7 PC. TANKARD WATER SET - PUR. (RARE SET; PITCHER IS SUPER; THREE TUMBLERS SILVERY)
- 75 96. N Poppy Ruffled Relish Tray - Ice Blue (rare with super color; manuf. separation on base; tiny nick on one point)
- 70 From Fine Cut Rose Bowl

- 60 P. G & C Stippled Plate 20
- 60 97. N Drapery Tri-cornered Candy Dish - Ice Blue (very scarce; almost perfect feet)
- 55 98. N Rosette ftd. Ruffled Bowl with Ruffles and Rings Exterior - Amy.
- 155 99. N Strawberry Plate with Basketweave Exterior - Amy. (very scarce; nice satin finish)
- 4600 100. 7 1/2" N G & C RUFFLED BOWL WITH BASKETWEAVE EXTERIOR - AQUA OPAL. (ABSOLUTELY SUPER ONE OF A KIND ITEM; GREAT PASTEL COLOR AND IRID.; ONE OF THE GREAT FINDS OF THE 90'S)
- 600 101. 9" N G & C STIPPLED PLATE WITH RIBBED EXTERIOR - EMERALD GREEN (FANTASTIC BRIGHT COLOR AND IRID.; HAS TO BE ONE OF THE BEST)
- 400 102. 9" N G & C Variant Plate with Ribbed Exterior and Old Rose Distillery Advertising - Green (very desirable; nice color and irid.)
- 356 103. N G & C FTD. HATPIN HOLDER - DK., DK. MARI. (FANTASTIC COLOR AND IRID.; THE BEST I'VE EVER SEEN)
- 20 104. N G & C ftd. Hatpin Holder - Green (badly cracked)
- 1200 105. N G & C TABLE SIZE 8 PC. PUNCH SET - GREEN (VERY RARE SET TO FIND IN THIS COLOR; HAS REALLY NICE BLUE HIGHLIGHTS; SUPER, SUPER DESIRABLE)
- 205 106. N G & C COVERED SWEETMEAT COMPOTE - PUR. (SCARCE AND DESIRABLE; SUPER COLOR AND IRID.)
- 75 107. N G & C Large Dresser Tray - Pur. (fantastic color and super irid.; open bubble on base)
- 35 108. N G & C Low Ruffled Hat Shape - Mari.
- 35 109. 9" N G & C Plate with Basketweave Exterior - Lt. Mari. (scarce)
- 225 110. N G & C 7 pc. Water Set - Dk. Mari. (really nice set; super color and irid.)
- 3542 111. (2) N Drapery Variant Swung Vases - Custard / Nutmeg (scarce; sold per each for pair)
- 25 112. N Stretch Turned In Bowl on Tree of Life Base - Celeste Blue (scarce item)
- 45 113. N Wild Strawberry Large Ruffled Bowl with Basketweave Exterior - Mari.
- 120 114. N Strawberry Bowl with Pie Crust Edge and Plain Exterior - Smoke (super rare color for this item; has smoothed chip on one point)
- 1700 115. N ROSE SHOW RUFFLED BOWL - ICE BLUE (VERY RARE COLOR; REALLY NICE ITEM; A SUPER PIECE)
- 900 116. N ROSE SHOW RUFFLED BOWL - AQUA OPAL. (VERY DESIRABLE; REALLY NICE BUTTER-SCOTCH HIGHLIGHTS)
- 500 117. N ROSE SHOW RUFFLED BOWL - PUR. (VERY DESIRABLE; GREAT BLUE HIGHLIGHTS; SMALL CHIP ON BASE)
- 300 118. N Poppy Show Ruffled Bowl - Blue (scarce; very desirable; has two chips on underside of base)
- 525 119. N POPPY SHOW RUFFLED BOWL - WHITE (VERY SCARCE; NICE AND FROSTY WITH GOOD IRID.)
- 370 120. N Wide Panel 4 Lily Epergne - Green (rare and desirable; base has a crack)
- 10 121. Dugan Stork and Rushes with Lattice Band Mug - Mari.
- 125 122. Dugan Fishermans Mug - Pur.
- 40 123. Dugan Grape Delight ftd. Nut Bowl - Blue
- 806 white wide panel epergne

- 2172 Or Chip on top / Gv Table Set 4pc.
- 45 124. Dugan Windflower Low Ruffled Bowl - Blue (nice color)
- 2300 125. DUGAN FARMYARD 8 RUFFLED BOWL WITH JEWELLED HEART EXTERIOR - PUR. (VERY RARE AND VERY DESIRABLE; REALLY NICE MULTI-COLORED IRID.; HAS APPROX. 1/4" CHIP ON BACK EDGE; LOTS OF REDS AND BLUES)
- 275 126. DUGAN GRAPE ARBOR LARGE FTD. DEEP ROUND BOWL WITH INVERTED FAN AND FEATHER EXTERIOR - AMY. (A VERY NICE EXAMPLE OF A REALLY RARE BOWL)
- 180 127. Dugan Flowers and Frames domed Ruffled Bowl - Pur. (scarce with exceptional irid.; super!)
- 25 128. Dugan Dogwood Sprays domed Ruffled Bowl - Pur. (scarce color for this item; has chip on base)
- 150 129. Dugan Cherry Wreath 6 pc. Oval Ruffled Berry Set - Amy. (scarce set; pretty nice color for one of these)
- 100 130. Dugan Floral and Grape 7 pc. Water Set - Amy. (scarce set with nice color; has crack in top of handle)
- 70 131. Dugan Lattice Heart Exterior Deep Round Bowl - Pur. (very rare pattern; has tiny chip on inside edge)
- 10x2 132. (2) Dugan Windflower Handled Nappy - Mari. (selling choice)
- 60 133. Dugan Apple Blossom Twig Bowl with 3 in 1 Edge - Lt. Amy. (scarce; odd color)
- 65 134. Dugan Round Up Low Ruffled Bowl - Mari. (tiny nick on one point)
- 245 135. DUGAN BROOKLYN BRIDGE 6 RUFFLED BOWL - MARI. (RARE AND DESIRABLE; NICE RADIUM TYPE FINISH)
- 160 136. Dugan Vineyard 7 pc. Water Set - Dk. Mari. (nice color)
- 40 137. Dugan Vintage Grape Covered Powder Jar - Mari. (tiny chip on rim of lid)
- 95 138. Dugan Mary Ann Handled Vase - Mari. (nice satiny finish)
- 20x2 139. (2) 9" and (1) 7" Dugan Vining Twigs Swung Vases with Floral Base - Mari. (selling choice; taller vase has small chip on base)
- 210 140. 7" DUGAN PERSIAN GARDEN PLATE WITH POOL OF PEARLS EXTERIOR - WHITE (SUPER SCARCE WITH REALLY NICE MULTI-COLORED IRID.)
- 85 141. 7 1/4" Dugan Six Petals 6 Ruffled Bowl - White (super irid.)
- 45 142. Dugan Question Mark 2 Handled Bon Bon - White (pin-head on base)
- 30 143. Dugan Leaf Ray Handled Nappy - P. Opal. (super example)
- 45 144. Dugan Six Petals Ruffled Crimped Edge Bowl - P. Opal. (nice example)
- 160 145. DUGAN NAUTILUS OPEN SUGAR - P. OPAL. (VERY SCARCE; NICE COLOR AND OPAL.; NOT SIGNED)
- 45 146. Dugan Puzzle 2 Handled Round Bon Bon - P. Opal.
147. Dugan Stippled Petals domed Ruffled Bowl - P. Opal. (damage on base)
- 25 148. Dugan Thumbprint Stemmed Ruffled Compote - Lt. P. Opal.
- 65 149. Dugan Caroline Flared Crimped Edge Bowl - Lt. P. Opal.
- 75 150. DUGAN SKI STAR DOMED HANDGRIP PLATE - P. OPAL. (SCARCE; NICE OPAL. WITH BRIGHT IRID.)
- 45 151. 11" Dugan Ski Star Large Ruffled Bowl with Compass Exterior - Dk. P. Opal. (nice example)
- 65 152. Dugan Starfish Stemmed Ruffled Compote - P. Opal. (scarce; nice example)

- NS 153. Dugan Holly Whirl 6 Ruffled Bowl - P. Opal. (really nice example; thick opal. all the way down)
- NS 154. Dugan Single Flower Exterior Bowl with 3 in 1 Candy Ribbon Edge - P. Opal.
- 55 155. Dugan Panelled Jack in the Pulpit Vase - P. Opal. (very attractive; nice opal.)
- 20 156. 11 3/4" Dugan Target Swung Vase - P. Opal.
- 40 157. 5" Dugan Flared Thin Rib Squatty Vase - P. Opal.
- NS 158. Dugan Single Flower Ruffled Bowl - P. Opal.
- NS 159. Dugan Single Flower Ruffled Bowl - P. Opal.
- 50 160. Dugan Panelled Cherries 3 ftd. Tri-cornered Crimped Edge Bowl - P. Opal. (scarce shape; nice)
- 37 1/2 161. Dugan Fishscale and Beads Ruffled Banana Dish - P. Opal.
- 25 162. Dugan Single Flower Framed Exterior Tri-cornered Bowl - P. Opal.
- 40 163. Dugan Single Flower Framed Exterior 6 Ruffled Hat Shape - Mari. (nice color; very unusual item)
- 25 164. Dugan Garden Path Variant Flared Bowl - Lt. Mari.
- NS 165. Dugan Big Basketweave Handled Flower Basket - Lt. Mari.
166. Dugan Apple and Pear Large Oval Berry Bowl - Mari.
- 15 167. Dugan Beaded Basket - Mari.
- NS 168. Dugan Wreath of Roses Rose Bowl - Mari.
- 20 169. 13" Dugan Spiralx Swung Vase - Mari. / Clear
- 20 170. 11" Dugan Spiralx Swung Vase - Dk. Mari.
- 35 171. Dugan Daisy Dear Ruffled Hat - Mari.
- 12 1/2 172. Dugan Cosmos Variant Large Ruffled Hat - Mari.
- 15 173. Westmoreland 270 Compote - Amy.
174. Westmoreland 270 Compote with Enamelled "Souvenir of Niagara Falls" - Mari. (unusual item; chip on one foot)
- 1100 175. **WESTMORELAND DAISY WREATH SWUNG VASE WHIMSEY FROM THE BOWL - MARI. (VERY UNUSUAL AND EXTREMELY RARE; ONLY ONE EVER HEARD OF; A REALLY, REALLY NEAT ITEM)**
- 35x2 176. Pair Westmoreland Corinth Swung Vases - Aqua / Teal (nice color; so much each for pair)
- 55 177. Westmoreland Wide Panel Swung Vase - Aqua (nice color and irid.)
- 70 178. Westmoreland Leaf Swirl Stemmed Ruffled Compote - Teal (scarce item)
- 45 179. Westmoreland Leaf Swirl Stemmed Ruffled Compote - Amy.
- 800 180. **WESTMORELAND BO PEEP CHILDREN'S CEREAL BOWL - MARI. (EXTREMELY RARE ITEM; ONE OF THE VERY FEW I'VE SEEN AND HAS TO BE ONE OF THE NICEST)**
- 30 181. Westmoreland Stork ABC Children's Cereal Bowl - Mari. (scarce; nice detail)
- 15 182. Westmoreland "Billy Baxter - His Clear Bottle" Ashtray - Mari.
- 40 183. Westmoreland Louisa ftd. Rose Bowl - Amy.
- 35 184. Westmoreland Wide Panel 6 Ruffled Bowl - Aqua / Teal
- 145 185. **WESTMORELAND PEARLY DOTS 6 RUFFLED BOWL - BLUE OPAL. (SCARCE; SILVERY)**
- 45 186. Westmoreland Carolina Dogwood Odd Flared Bowl - P. Opal. (odd flare; dark color; exceptional)
- 70 187. Westmoreland Daisy Wreath 6 Ruffled Bowl - P. Opal. (scarce; light color but nice)
- 25 188. Westmoreland Smooth Rays 6 Ruffled Bowl - Dk. P. Opal. (super, super example)
- 20 189. Westmoreland Louisa ftd. Nut Bowl - Amy.
- 425 190. **7 3/4 - 8" TIFFANY FAVRILLE DOMED FLARED BOWL WITH ETCHED LEAF DESIGN - GOLD (SUPER RARE AND SUPER DESIRABLE; SIGNED L.C.T. FAVRILLE)**
- 35x2 191. (2) Tiffany 8" Hanging Prisms - Gold with Opal. (scarce; sold per each for pair)
- 30x2 192. (2) Beaded Purses - Dark (one has blue beads; selling choice)
- 150 193. European Covered Hen on the Nest - Blue (nice color)
- 45 194. European Cathedral Chalice - Mari.
- 115 195. **9 1/2" AUSTRALIAN NESTING SWAN RUFFLED BOWL - MARI. (VERY SCARCE PATTERN; NICE COLOR AND DETAIL)**
- 245 196. **9 1/2" AUSTRALIAN THUNDERBIRD LARGE RUFFLED BOWL - PUR. (VERY SCARCE PATTERN; SORTA SILVERY)**
- 150 197. **9 1/2" AUSTRALIAN KINGFISHER (SITTING ON THICK BRANCH) LARGE RUFFLED BOWL - PUR. (SCARCE; NICE COLOR AND IRID.)**
- 35 198. U.S. Glass Cosmos and Cane Table Creamer - Mari. (very nice color and irid.)
- 35 199. U.S. Glass Cosmos and Cane Table Spooner - Mari. (very nice color and irid.)
- 200 200. **U.S. GLASS PRINCESS LAMP WITH WILD CYLINDER DECO. SHADE - PUR. (RARE AND UNUSUAL; THERE ARE A COUPLE NICKS ON BASE)**

START OF SECOND SESSION

- 15 201. U.S. Glass Cosmos and Cane Ruffled Bowl - Pur. (rare but cracked and glued)
- 80 202. U.S. Glass 1908 St. Paul, Minn. Shriners Champagne Glass - Ruby Flash (scarce; nice)
- 55 203. U.S. Glass 1909 Louisville, Ky. Shriners Champagne Glass - Clear (scarce)
- 45 204. U.S. Glass 1910 New Orleans Shriners Champagne Glass - Clear (scarce)
- 40 205. U.S. Glass 1911 Rochester, NY Shriners Champagne Glass - Clear (scarce)
- 205 206. Unusual Figural Chicken Blown Egg - Dk. Mari (unusual; now if we can only find the chicken)
- 70 207. (2) Automobile Head Light Reflectors - Lt. Mari. (really unusual; brilliant irid.)
- 25 208. Depression Era Etched 8 pc. Juice Set - Mari. (seen the set before, but not etched)
- 32 1/2 209. Hammered Bell Shade - White
- 3300 210. **M'BURG ROSE COLUMNS VASE - GREEN (VERY RARE AND VERY DESIRABLE; SATINY AND PERFECT)**
- 20 211. 6" M'burg Blackberry Wreath Ruffled Sauce - Mari. (satiny)
- 50 212. 9" M'burg Grape Wreath Ruffled Crimped Edge Bowl - Mari. (radium; nice)
- 45 213. 8 1/2" M'burg Grape Wreath Ruffled Crimped Edge Bowl - Mari. (radium; nice)
- 70 214. 8 1/2" M'burg Holly Sprig Ruffled Crimped Edge Bowl - Amy. (radium; nice color and irid.)

- 650 215. **M'BURG HOBNAIL SPITTOON - AMY. (ABSOLUTELY SUPER EXAMPLE; EXCELLENT COLOR; HAS THE TINIEST PINHEAD ON TOP EDGE)**
- 110 216. 9 1/2" M'burg Rays and Ribbons Ruffled Crimped Edge Bowl - Amy. (radium; has super highlights)
- 75 217. 10 1/2" M'burg Seaweed Bowl with 3 in 1 Edge - Mari. (scarce with satiny finish; nice color; epoxied base)
- 300 218. **8 3/4" M'BURG LITTLE STARS BOWL WITH 3 IN 1 EDGE - LT. MARI. (SATINY; LIGHT COLOR AND IRID. BUT A RARE SIZE)**
- 145 219. 7 3/4" M'burg Little Stars Ruffled Bowl - Green (satiny; silvery / gold irid.)
- 625 220. **9 1/2" M'BURG MANY STARS BOWL WITH 3 IN 1 EDGE - GREEN (RADIUM; SUPER COLOR AND IRID.)**
- 150 221. M'burg Trout and Fly Bowl with 3 in 1 Edge - Green (satiny; has small V shaped chip on edge)
- 370 222. M'burg Courthouse 6 Ruffled Bowl - Amy. (radium; nice irid.; been sanded on edge)
- 250 223. M'burg Issac Benesch Ruffled Advertising Bowl - Amy. (scarce; silvery)
- 60 224. M'burg Holly Sprig Bon Bon with Issac Benesch 54th Anniversary - Mari. (scarce; satiny)
- 140 225. **10 1/4" M'BURG PEACOCK AT THE URN LARGE 6 RUFFLED BOWL - MARI. (SATINY; HAS BEE - NO BEADING)**
- 110 226. M'burg Nesting Swan 6 Ruffled Bowl - Mari. (very scarce; nice satiny finish)
- 45 227. 6 1/4" M'burg Cosmos Ice Cream Shaped Bowl - Green (radium)
- 10 228. Fenton Holly Stemmed Ruffled Compote - Lt. Mari.
- 15 229. Fenton Wine and Roses Stemmed Goblet - Dk. Mari. (nice color)
- 700 230. **FENTON REGAL IRIS GONE WITH THE LAMP - AQUA OPAL. (ONE OF THEIR LIMITED EDITION ITEMS FROM THE 70'S; ONLY A FEW MADE - 1ST WE'VE SOLD; A VERY ATTRACTIVE ITEM)**
- 70 231. 15 3/4" Fenton Rustic Mid-size Swung Vase - Dk. Mari. (nice color top to bottom)
- 15 232. 10" Fenton Knotted Beads Swung Vase with Crimped Edge - Mari.
- 45 233. 9" Fenton Knotted Beads Swung Vase with Crimped Edge - Blue (scarce; odd shape)
- 32 1/2 234. 11" Fenton April Showers Swung Vase - Green
- 32 1/2 235. 11 1/2" Fenton April Showers Swung Vase - Blue
- 40 236. 8" Fenton Long Thumbprint Swung Vase - Green
- 22 1/2 237. 10" Fenton Diamond Rib Swung Vase - Green
- 22 1/2 238. 10 1/2" Fenton Diamond Rib Swung Vase - Amy.
- 10 239. 10" Fenton Diamond Rib Swung Vase - Mari.
- 385 240. **FENTON PEACOCK AT THE URN FLAT PLATE - BLUE (SCARCE AND DESIRABLE; NICE COLOR AND MULTI-COLORED IRID.)**
- 150 241. **FENTON PEACOCK AT THE URN 6 RUFFLED BOWL - WHITE (SCARCE; NICE IRID. AND PRETTY FROSTY)**
- 80 242. Fenton Peacock at the Urn 8 Ruffled Bowl - Dk. Mari. (nice color and irid.)
- 40 243. Fenton Feather Stitch 8 Ruffled Bowl - Mari. (scarce pattern; nice)
- 10 244. Fenton Holly 8 Ruffled Bowl - Mari.
- 550 245. **FENTON CONCORD GRAPE 6 RUFFLED BOWL - GREEN (SUPER, SUPER COLOR AND IRID.; HAS TO BE ONE OF THE BEST)**
- 200 246. Fenton Butterfly and Berry ftd. Master Berry Bowl - Green (super scarce; nice color and irid.)
- 135 247. Fenton Butterfly and Berry ftd. Ruffled Master Berry Bowl - Blue (very scarce; super, super color and irid.)
- 45 248. Fenton Fantail ftd. Flared Master Berry Bowl - Mari.
- 140 249. Fenton Panther ftd. Master Berry Bowl - Dk. Mari. (nice dark color and irid.)
- 950 250. **9 1/4" FENTON VINTAGE GRAPE LARGE ICE CREAM SHAPED BOWL - RED (VERY RARE AND DESIRABLE; THE FACE IS SILVERY - THE BACK IS NICE)**
- 750 251. **8 1/2" FENTON DRAGON AND LOTUS ICE CREAM SHAPED BOWL - RED (VERY DESIRABLE; THE FACE IS SILVERY)**
- 425 252. **6 3/4" FENTON ACORN DEEP ROUND FLARED BOWL - RED (SCARCE; HAS DARK SATINY FINISH; NICE IRID.)**
- 300 253. **FENTON HOLLY RUFFLED HAT - RED (VERY SCARCE AND DESIRABLE; BRIGHT GOLD HIGHLIGHTS; REALLY NICE)**
- 450 254. **FENTON BLACKBERRY SPRAY RUFFLED HAT - DK. RED (VERY SCARCE; DARK COLOR AND IRID.; REALLY RED)**
- 235 255. **FENTON 2 ROW OPEN EDGE 2 SIDED HAT - RED (SCARCE; DESIRABLE; A BIT SILVERY)**
256. **10 1/4" FENTON FINE RIB SWUNG VASE - RED (VERY DESIRABLE; NICE EXAMPLE; NICE COLOR)**
- 12 1/2 257. Pair 10 1/4" Fenton Fine Rib Swung Vases - Mari. (so much each times 2)
- 15 258. 16 1/4" Fenton Fine Rib Mid-size Swung Vase - Mari.
- 20 259. 8 1/4" Fenton Butterfly and Berry Swung Vase - Mari.
- 40 x 2 260. Pair Fenton Ribbed Jester's Cap Jack in the Pulpit Vases - Mari. (nice; selling choice)
- 55 261. 5 1/2" Fenton Boggy Bayou Squatty Vase - Mari.
- 32 1/2 262. Fenton 2 Row Open Edge Blackberry 2 Sided Hat - Blue (one end filled in)
- 50 263. Fenton 2 Row Open Edge 2 sided Hat with Miller Advertising - Mari.
- 35 264. Fenton 2 Row Open Edge 2 sided Hat with Brand Advertising - Lt. Mari. (a bit faded)
- 100 265. **FENTON PEACOCK AT THE URN STEMMED RUFFLED COMPOTE - WHITE (NICE AND FROSTY; GREAT IRID.)**
- 40 266. Fenton Peacock at the Urn Deep Goblet Shaped Compote - Mari. (nice color)
- 60 267. Fenton Iris Stemmed Ruffled Compote - Amy.
- 40 x 2 268. (2) Fenton Iris Stemmed Ruffled Compotes - Mari. (selling choice)
- 50 269. Fenton Vintage Grape Stemmed Ruffled Compote - Amy.
- 70 270. Fenton Persian Medallion Large Stemmed Ruffled Crimped Edge Compote - Blue (super color; smoothed chip)
- 35 271. Fenton Captive Rose Crimped Edge Ruffled Compote - Green (scarce; light irid. on interior)
- 10 272. Fenton Plain Ruffled Compote - Lime Green (nice color)
- 15 273. Fenton Rose Spray Goblet Shaped Compote - Dk. Mari. (nice detail)

- 25 274. Fenton Rose Wreath Stemmed Ruffled Compote - Amy.
- 35 275. Fenton Blackberry Bramble Stemmed Square Ruffled Compote - Blue (nice color)
- NS 276. 10" Fenton Vintage Grape Large Ruffled Bowl - Blue
- 32 1/2 277. 9" Fenton Vintage Grape 6 Ruffled Bowl - Green (nice color)
- 45 278. Fenton Leaf Chain 6 Ruffled Bowl - Green (silvery)
- 22 1/2 279. 6 3/4" Fenton Vintage Grape Round Flared Bowl - Green
- 900 280. 1911 FENTON ATLANTIC CITY ELKS B.P.O.E. ICE CREAM SHAPED BOWL - BLUE (VERY RARE AND DESIRABLE; REALLY NICE COLOR AND IRID.)
- 425 281. 1910 FENTON DETROIT ELKS B.P.O.E. 6 RUFFLED BOWL - AMY. (RARE AND DESIRABLE; NICE DETAIL)
- 475 282. FENTON "SEASONS GREETINGS - EAT PARADISE SODAS" PLATE - AMY. (VERY SCARCE; NICE COLOR AND FINISH)
- 55 283. Fenton Lions Deep Round Flared Bowl - Mari. (scarce; nice color and detail)
- 55 284. Fenton Garland ftd. Rose Bowl - Dk. Mari. (nice color)
- 350 285. FENTON DRAGON AND LOTUS 8 RUFFLED BOWL - P. OPAL. (VERY SCARCE AND ATTRACTIVE; NOT A REAL DARK OVERLAY - SORTA PASTEL)
- 170 286. FENTON PEACOCK AND GRAPE SPATULA FTD. RUFFLED BOWL - LIME GREEN OPAL. (VERY SCARCE AND DESIRABLE; EXCELLENT COLOR AND IRID.)
- 20 287. Fenton Peacock and Grape Ruffled Bowl - Green
- 55 288. Fenton Peacock and Grape Spatula ftd. 8 Ruffled Bowl - Powder Blue / Lt. Mari. (odd color and tint; unusual; silvery)
- 90 289. Fenton Little Fishes Large Ball ftd. Ruffled Bowl - Mari. (very desirable; nice detail and scarce)
- 25 290. FENTON ORANGE TREE HANDLED LOVING CUP - BLUE (VERY DESIRABLE; REALLY NICE COLOR AND IRID.)
- 50 291. Fenton Orange Tree Handled Loving Cup - White (scarce; check at handle; light irid.)
- 210 292. FENTON ORANGE TREE WITH TREE TRUNK FLAT PLATE - WHITE (VERY DESIRABLE; REALLY NICE COLOR AND IRID.)
- 110 293. Fenton Orange Tree with Trunk Flat Plate - White (scarce; light color and irid.)
- 95 294. Fenton Leaf Chain Flat Plate - Clam. (scarce; light irid.)
- 175 295. FENTON CAPTIVE ROSE FLAT PLATE - BLUE (SCARCE; SILVERY)
- 350 296. FENTON THREE FRUITS PLATE - BLUE (SCARCE; NICE SATINY COLOR AND IRID.)
- 65 297. FENTON RIBBON TIE LOW RUFFLED PLATE - BLACK AMY. (HAS CHIP ON BASE AND SMALL FLAKE ON EDGE BUT IS AS RARE AS RARE CAN BE!)
- 35 298. Fenton Vintage ftd. Fern Dish - Blue (nice irid.)
- 25 299. Fenton Vintage ftd. Fern Dish - Mari.
- 70 300. FENTON THISTLE FTD. BANANA DISH - BLUE (SUPER COLOR AND IRID.; MAY HAVE A LITTLE ROUGHNESS)
- 225 301. FENTON G & C FTD. FRUIT BOWL WITH PERSIAN MEDALLION INTERIOR - GREEN (VERY SCARCE WITH RELLY NICE COLOR AND IRID.)
- 120 302. FENTON G & C FTD. FRUIT BOWL WITH PLAIN INTERIOR - BLUE (NICE COLOR AND IRID.; VERY SCARCE)
- 75 303. Fenton Orange Tree ftd. Fruit Bowl - Mari.

136 Leaf Chain plate dark m.

- 55 304. Fenton Stag and Holly Ball ftd. Deep Ruffled Bowl - Mari. (scarce shape)
- 260 305. Fenton Orange Tree 6 pc. Flared Punch Set - Dk. Mari. (nice dark satiny finish)
- 80 306. Fenton Stag and Holly Large Ball ftd. Ruffled Bowl - Mari.
- 45 307. Fenton Chrysanthemum Large Ball ftd. Ruffled Bowl - Dk. Mari.
- 25 308. Fenton Dragon and Lotus Bowl with 3 in 1 Edge - Dk. Mari.
- 85 309. Fenton Peacock Tail Ruffled Hat with O'Dell Jeweler Advertising - Green
- 35 310. 10" FENTON ENGRAVED GRAPE HOUR GLASS TANKARD PITCHER - MARI. (VERY SCARCE)
- 170 311. Fenton Lattice and Grape 6 pc. Tankard Water Set - Mari. (nice color on pitcher)
- 25 312. Fenton Panelled Dandelion Tumbler - Green
- 95 313. 6 1/2 - 7" Fenton Peacock Tail Deep Flared Bowl with Horlacher Advertising - Amy. (scarce advertising item)
- 25 314. Fenton Autumn Acorn 6 Ruffled Bowl - Blue
- 160 315. 9 1/4" FENTON CHERRY CHAIN DEEP ROUND ICE CREAM SHAPED BOWL - WHITE (VERY SCARCE; NICE GOLD COLOR AND IRID.)
- 50 316. 9 1/2" Fenton Feathered Serpent 6 Ruffled Bowl - Amy.
- 50 317. Fenton Thistle Bowl with 3 in 1 Edge - Amy.
- 80 318. Fenton Scale Band 5 pc. Water Set - Mari.
- 30 319. Fenton Flowers ftd. Rose Bowl - Mari.
- 100 320. Fenton ftd. Orange Tree Hatpin Holder - Blue (real nice color; chip on point of one toe)
- 45 321. Fenton Illusion 2 Handled Bon Bon - Blue (scarce pattern)
- 30 322. Fenton Bird and Cherries 2 Handled Bon Bon - Green
- 50 323. Fenton Pond Lily 2 Handled Bon Bon - White (nice color and irid.)
- 20 324. Fenton Lotus and Grape 2 Handled Bon Bon - Mari.
- 45 325. Fenton Laurel Band 8 Sided Plate - Mari. (scarce)
- 45 326. Pair Fenton Florentine Large Candlesticks - Mari.
- 25 327. Fenton Smooth Rays Tri-cornered Sauce - Lime Green / Mari. (odd tint)
- 40 328. Fenton Persian Medallion Ruffled Bowl with Berry Exterior - Blue
- 40 329. Fenton Captive Rose Bowl with 3 in 1 Edge - Blue
- 385 330. 10 1/4" IMPERIAL HATTIE CHOP PLATE - HELIOS GREEN (RARE AND DESIRABLE; PRETTY NICE LUSTRE)
- 80 331. 9" Imperial Open Rose Flat Plate - Helios Green (scarce)
- 10 332. Imperial Pansy Flat Oval Dresser Tray - Green (very scarce item)
- NS 333. 11" Imperial Heavy Grape Chop Plate - Mari. (scarce; nice color)
- 40 334. 6" Imperial Grape Flat Plate - Dk. Mari. (nice color)
- 160 335. 10 1/2" Imperial Acanthus Chop Plate - Mari. (very scarce; fantastic color and irid.)
- 45 336. 8" Imperial Heavy Grape Flat Plate - Amber (scarce color and nice)
- 20 337. 9" IMPERIAL EMBOSSED SCROLL - PUR. (SUPER COLOR; CHIPPED)
- 30 338. Imperial Star and File Stemmed Wine Glass - Mari.
- 25 339. Imperial Octagon Stemmed Wine Glass - Mari.
- 450 340. IMPERIAL POPPY SHOW LARGE VASE - DK. MARI. (RARE AND DESIRABLE; NICE COLOR AND IRID.)
- 170 341. 8 3/4" IMPERIAL STRETCH SWUNG VASE - RED (FANTASTIC COLOR AND IRID. SUPER, SUPER!)

- 35 342. 13 3/4" Imperial Ripple Swung Vase - Pur. (super color and irid.)
- 20 343. 12" Imperial Beaded Bullseye Swung Vase - Mari. (nice color)
- 20 344. 8" Imperial Miniature Morning Glory Tall Swung Vase - Helios Green (scarce; small flake on base)
- 225 345. **IMPERIAL CRAB CLAW 7 PC. WATER SET - MARI. (VERY SCARCE; NICE COLOR AND IRID.)**
- 25 346. Pair Imperial Swirl Jack in the Pulpit Vases - Dk. Mari. (so much each for pair)
- 30 347. Imperial Ribbed Jack in the Pulpit Vase - Dk. Mari. (nice color)
- 25 348. Imperial Star and File Handled Celery Vase - Mari. (very scarce; nice)
- NS 349. Imperial Star Medallion Celery Vase - Dk. Mari. (very scarce; nice color)
- 75 350. **8 1/2" TALL IMPERIAL FLUTE AND CANE WATER PITCHER - DK. MARI. (VERY RARE ITEM; NICE COLOR AND IRID.)**
- 50 351. **IMPERIAL BEADED ACANTHUS MILK PITCHER - DK. MARI. (VERY, VERY SCARCE PATTERN; NICE)**
- 40 352. Imperial Poinsettia Milk Pitcher - Dk. Mari. (nice color and irid.)
- 260 353. Imperial Tiger Lily 7 pc. Water Set - Dk. Mari. (really nice color and irid.)
- 40 354. Imperial Grape Wine Decanter and Stopper - Mari. (nice irid.)
- 100 355. **IMPERIAL GRAPE TUMBLER - SMOKE (SUPER IRID. ON A VERY SCARCE ITEM)**
- 75 356. Imperial Robin Tumbler - Dk. Mari. (scarce; nice color)
- 125 357. Imperial Octagon Wine Decanter and Stopper - Dk. Mari. (etched 1918 and has initials; different)
- 172 358. Imperial Grape Handled Cookie Jar - Smoke (nice irid.)
- 25 359. 7 1/2" Imperial Shell Ruffled Bowl - Smoke
- 200 360. **PAIR NICE IMPERIAL JEWELS BELL SHAPED CANDLESTICKS - PUR (VERY UNUSUAL SET; REALLY NEAT)**
- 40 361. Imperial Grape Cup and Saucer - Helios Green (scarce)
- 45 362. Imperial "Bellaire - Good Will Tour" Bowl - Mari. (scarce; nice color)
- 65 363. Imperial Pansy Ruffled Bowl - Pur. (really nice; super, super blue irid.)
- 25 364. 7" Imperial Heavy Grape Ruffled Bowl - Pur.
- 10 365. Imperial Embossed Scroll / Curved Star Exterior Stemmed Compote - Dk. Mari.
- 30 366. Imperial Acanthus 6 Ruffled Bowl - Lt. Smoke (super irid.)
- 7 1/2 367. Imperial Swirl Vase - Smoke
- 22 1/2 368. Imperial Wide Panel Handled Parfait or Mug - Dk. Mari.
- 20 369. Fenton Large Size Flower Frog - Celeste Blue (different size)
- 45 370. Lot of 11 Buttons - Dark

New Glass

- ___ 1. 1983 ACGA Seacoast Spittoon - Green
- ___ 2. 1984 ACGA Seacoast Spittoon - Red
- ___ 3. 1968 ACGA God and Home Mug - Teal
- ___ 4. 1979 Carnival Glass Encore Miniature 7 pc. God and Home Water Set - Blue
- ___ 5. Imperial / Lenox Windmill 7 pc. Water Set - Mari. / Frosted Panels (has some original labels)
- ___ 6. 1980 Carnival Glass Encore Miniature Wine and Roses Pitcher - Ice Blue
- ___ 7. 1977 HOACGA ftd. Hatpin Holder - Red
- ___ 8. 1977 HOACGA ftd. Hatpin Holder - Crystal (not iridized; never heard of this piece)

- ___ 9. 1978 HOACGA Corn Vase with Fenton Label - Red
- ___ 10. 1979 HOACGA Loving Cup - Red
- ___ 11. 1980 HOACGA ftd. Hatpin Holder - Frosted Ice Green
- ___ 12. 1981 HOACGA 2 pc. Candlelamp - Red
- ___ 13. 1979 ACGA Beaded Shell Mug - Red
- ___ 14. 1980 ACGA Beaded Shell Mug - Ice Green
- ___ 15. 1981 ACGA Beaded Shell Mug - Vaseline
- ___ 16. 1979 ICGA Miniature Town Pump - Pur.
- ___ 17. 1980 ICGA Miniature Town Pump - Mari.
- ___ 18. Imperial Covered Lion Dish - Mari.
- ___ 19. Imperial Rose Marie Bulbous Vase - Mari.
- ___ 20. Imperial Octagon Large domed Flared Vase - Mari.
- ___ 21. Fenton 1976 Centennial Patriotic Large Covered Compote - Blue (really neat)
- ___ 22. Fenton Sitting Cat Figural - Celeste Blue
- ___ 23. Fenton Dolphin Papreweight - Pur.
- ___ 24. Imperial Nixon - Agnew Storybook Mug - Smoke
- ___ 25. Figural Covered Turkey - Green
- ___ 26. 1977 Holmes County Antique Festival Flat Plate - Green
- ___ 27. Cow Butter Mold - Red / Amberina
- ___ 28. Double Rabbit Toothpick Holder - Mari.
- ___ 29. St. Clair Indian Head Toothpick Holder (Gibson?) - Blue
- ___ 30. Kingfisher in Rushes Toothpick Holder - Red / Mari.
- ___ 31. Lot of 4 odd Toothpick Holders - Assorted Colors (sold per each for lot)

EXTRA ITEMS

(to be sold with related pieces)

- 800 1X. **N WIDE PANEL 4 LILY EPERGNE - WHITE (VERY RARE AND DESIRABLE; NICE AND FROSTY; PERFECT AND REALLY TOUGH)**
- 900 2X. **M'BURG PEACOCK LARGE ICE CREAM BOWL - AMY. (SUPER RADIUM FINISH; RARE AND VERY DESIRABLE; HAS BEE - NO BEADS)**
- 450 3X. **10 1/4" M'BURG PEACOCK LARGE BOWL WITH 3 IN 1 EDGE - AMY. (SUPER RADIUM FINISH; VERY DESIRABLE)** *Green*
- 1300 4X. **8" FENTON PETER RABBIT ICE CREAM SHAPED BOWL - BLUE (VERY RARE AND DESIRABLE; NICE DETAIL; VERY SLIGHT ROUGHNESS ON ONE POINT)**
- 425 5X. **9" DUGAN HEAVY WEB SQUARE BOWL - LT. P. OPAL. (EXTREMELY RARE PATTERN IN AN EXTREMELY RARE SHAPE)**
- 650 6X. **9" FENTON PLAID 8 RUFFLED BOWL - GREEN (VERY RARE COLOR FOR THIS PATTERN)**
- 600 7X. **10" N FRUIT AND FLOWERS RUFFLED BOWL WITH BASKETWEAVE EXTERIOR - ICE GREEN (RARE; VERY DESIRABLE COLOR; A NICE ITEM)**
- ___ 8X. **FENTON KITTENS CUP AND SAUCER - MARI. (VERY SCARCE; HAS 2 SETS OF KITTENS)**
- 70 9X. **N Fine Cut and Roses ftd. Rose Bowl - Green (very scarce and desirable)**
- 50 10X. **9" Fenton Thistle 6 Ruffled Bowl - Green**
- 250 11X. **12" DUGAN PERSIAN GARDEN LARGE 6 RUFFLED BOWL - P. OPAL. (SUPER COLOR; VERY DESIRABLE MASSIVE ITEM)**
- 500 12X. **4" DUGAN TRI-CORNERED BEAUTY BUD VASE - PUR. (EXTREMELY DESIRABLE ITEM; NICE COLOR)**
- 200 13X. **N WILD ROSE 3 FTD. FLARED BOWL - BLUE (VERY RARE COLOR FOR THIS ITEM)**

80 *And m'd size panel vase
Free Trunk*

